

**Unknown**

**From:** Guye, Gerry, EMNRD  
**Sent:** Tuesday, February 26, 2008 8:33 AM  
**To:** 'Jerri Lee'  
**Subject:** Winston SWD

Jerri

The workplan for this well is within action levels, therefore the plan is approved.

The final C-141 should be received by this office not later than 3/26/2008, indicating the closer of this project.

**Gerry Guye**

**Compliance Officer**

**NMDCD - Artesia**

**Office (505)748-1283x105**

**Mobile (505)626-0843**

**E-Mail: [gerry.guye@state.nm.us](mailto:gerry.guye@state.nm.us)**

**From:** Bratcher, Mike, EMNRD  
**Sent:** Tuesday, February 26, 2008 8:13 AM  
**To:** Jerri Lee  
**Cc:** Guye, Gerry, EMNRD  
**Subject:** RE:

Jerri,

Gerry Guye will be your contact for this project.

Mike

**From:** Jerri Lee [<mailto:office@sesi-nm.com>]  
**Sent:** Monday, February 25, 2008 11:56 AM  
**To:** Bratcher, Mike, EMNRD  
**Subject:**

Have you had a chance to review this?

Attached please find the workplan for the Oxy Winston SWD #4. Please review and forward your approval or any stipulations.

Thank you,

Jerri Lee  
Administrative Assistant

---

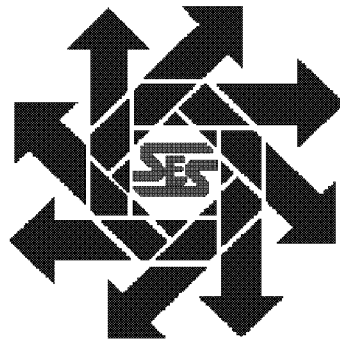
This inbound email has been scanned by the MessageLabs Email Security System.

---

2/28/2008

**Oxy USA  
Winston #4 SWD  
Work Plan  
Unit D, Section 31, Township 21S, Range 24E  
Eddy County, New Mexico**

**February 5, 2008**



**Prepared for:**

**Oxy USA  
102 S Main  
Carlsbad, New Mexico 88220**

**By:**

***Safety & Environmental Solutions, Inc.  
703 E. Clinton  
Hobbs, New Mexico 88240  
(505) 397-0510***

## TABLE OF CONTENTS

I. COMPANY CONTACTS.....	1
II. BACKGROUND .....	1
III. SURFACE AND GROUND WATER .....	1
IV. SOILS .....	1
V. WORK PERFORMED .....	1
VI. CONCLUSIONS .....	2
VII. FIGURES & APPENDICES.....	2
Figure 1 - Vicinity Map .....	3
Figure 2 - Site Plan .....	4
Appendix A - Site Photos .....	5

## I. Company Contacts

Rick Kerby	Oxy USA	505-393-2174	rick_kerby@oxy.com
Bob Allen	SESI	505-397-0510	<a href="mailto:ballen@sesi-nm.com">ballen@sesi-nm.com</a>

## II. Background

Safety and Environmental Solutions, Inc. (SESI) was engaged to perform delineation and cleanup services on the Winston SWD #4 Battery. The subject site is located in Unit D, Section 31, Township 21S, Range 24E, Lea County, New Mexico. On October 10, 2007 there was release at the facility. This release was contained inside the battery. On January 1, 2008 there was a second release at the facility caused by cold weather. Approximately 60 barrels of produced water were released. Fifty (50) barrels were recovered.

## III. Surface and Ground Water

The closest groundwater of record with the New Mexico State Engineer's Office is in section 5, Township 22S, Range 24E. The depth of water in this well was 115 feet in October of 2001.

## IV. Soils

The surface soils in the area are predominantly caliche.

## V. Work Performed

On October 10, 2007 a hand auger was utilized to delineate the spill area inside the berm. Samples were retrieved at depths of 1' and 4' in each auger hole. Each sample was analyzed for chlorides using HACH Chloride Strips.

Sample point #1 is north of tank battery in between west tank and middle tank  
Sample point #2 is on the northwest side of tank batteries  
Sample point #3 is north of tank battery on location road  
Sample point #4 is on the east side of the tank battery

The results of the analysis were as follows:

Sample points	Chlorides (PPM)
#1 1'bgs	336
#1 4'bgs	<124
#2 1'bgs	656
#2 4'bgs	<124
#3 1'bgs	254
#3 4'bgs	<124
#4 1'bgs	1960
#4 4'bgs	<124

On November 7, 2007 a hand auger was utilized to retrieve samples from the same locations as before in order to run additional analysis for Total Petroleum Hydrocarbons (TPH).

The results of the analysis were as follows:

Sample point	TPH	Chlorides
#1 4' bgs	325	124
#2 4' bgs	30	<124
#3 2' bgs	164	412
#4 4' bgs	40	<124

## VI. Conclusions

Based on the characterization of the site, the cleanup level reached by the application of the **"Guidelines for Remediation of Leaks, Spills and Releases"** *New Mexico Oil Conservation Division* – August 13, 1993 (Guidelines) to this site is 5000 ppm TPH. Application of the New Mexico Oil Conservation Division's ranking criteria for contaminated soils at this site is presented below.

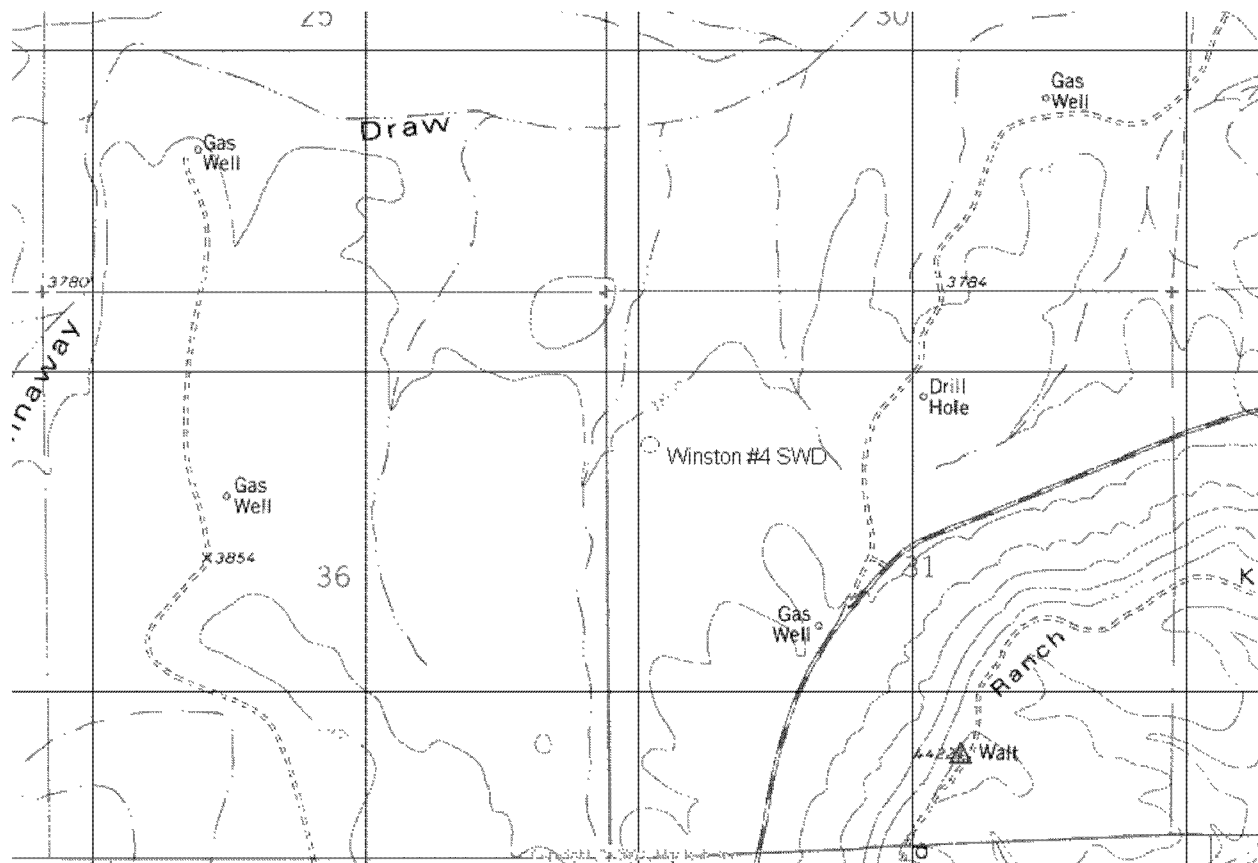
Depth to Ground Water:	0 points
Distance to Well Head or Water Source:	0 points
Distance to Surface Water/Waterways:	0 points
Total Score:	0 points

It is proposed that all visually contaminated soils be excavated and transported to an NMOCD approved disposal facility. The excavated areas will then be backfilled with clean caliche and returned to grade.

## VII. Figures & Appendices

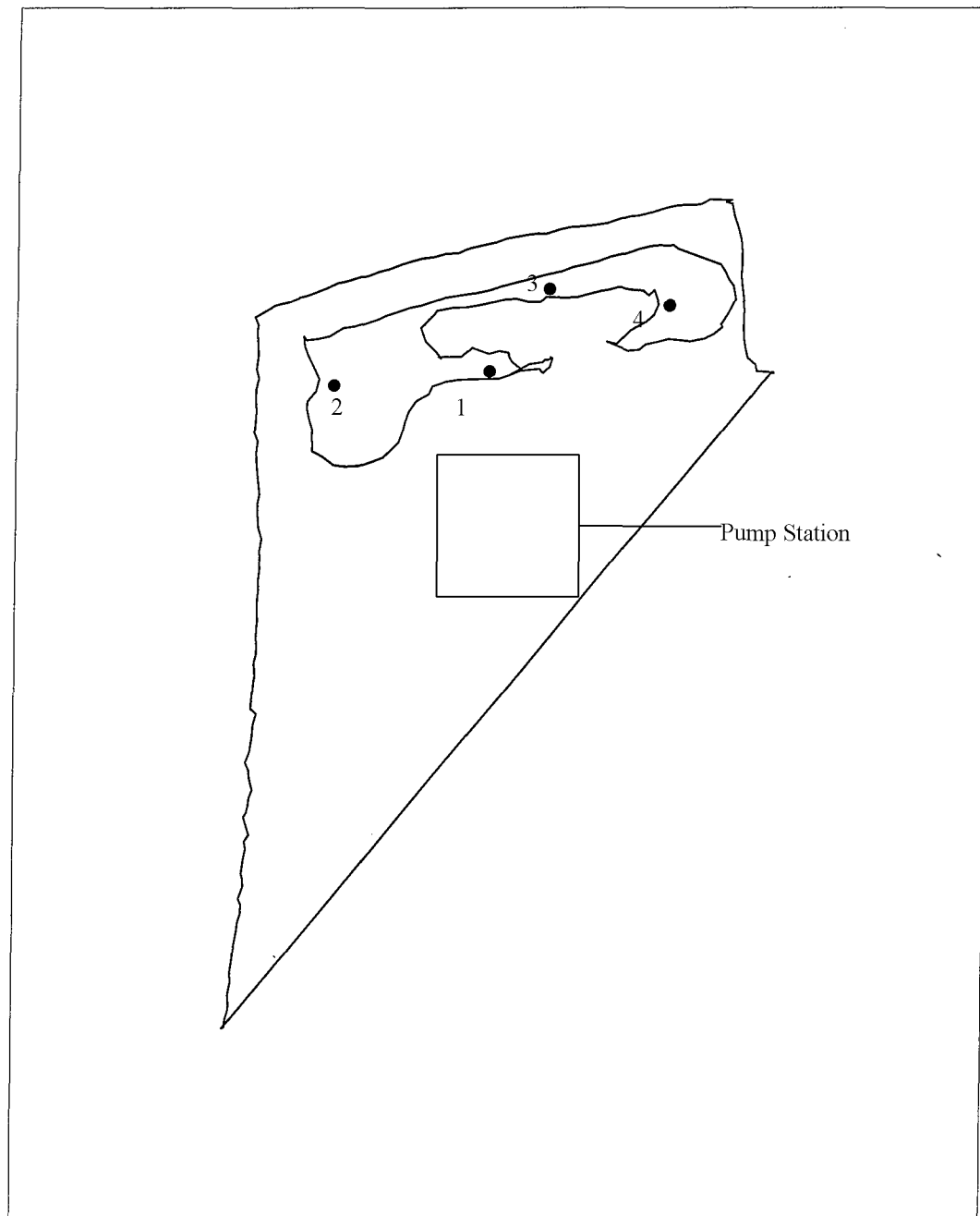
Figure 1 - Vicinity Map  
Figure 2 - Site Plan  
Appendix A - Site Photos

## **Figure 1 Vicinity Map**



## **Figure 2 Site Plan**





## Winston SWD

Lat/Long  
WGS 1984



Scale 1:750  
0 80.00  
Feet

Map.ssf  
11/20/2007  
GPS Pathfinder® Office  
 **Trimble™**

## **Appendix A Site Photos**











