

**AP - 44**

**GENERAL  
CORRESPONDENCE**

**DATE:  
2010-2007**



# Highlander Environmental Corp.

Midland, Texas

AP-44

Gen. Cor.

2010-2007

CERTIFIED MAIL  
RETURN RECEIPT NO.

RECEIVED

JAN 18 2007

Environmental Bureau  
Oil Conservation Division

December 27, 2006

Mr. Wayne Price  
New Mexico Energy, Minerals, & Natural Resources  
Oil Conservation Division, Environmental Bureau  
1220 S. St. Francis Drive  
Santa Fe, New Mexico 87504

RE: **Request for Supplemental Data for Report "Results of Stage 1 Abatement Plan Implementation and Request for Release From Rule 19, at the Eunice Monument Eumont (EME) SWD H-13 Site, Unit H, Section 13, T-20-S, R-36-E, Lea County, New Mexico, NMOCD AP-44", Dated August 18, 2006.**

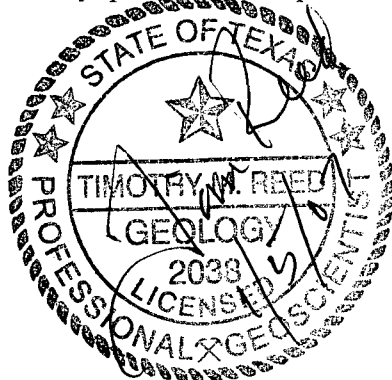
Mr. Price:

The New Mexico Oil Conservation Division Responded to the above-mentioned report on September 27, 2006, in an email memorandum. In that memorandum, the NMOCD stated that "After reviewing the submittal OCD is inclined to agree with your conclusions. In order for OCD to release this site it would be helpful if ROC demonstrates that the groundwater gradient is accurate". Specifically, NMOCD requested the following information:

1. ROC should demonstrate that the groundwater gradient is accurate.

A regional map, showing the site location, in reference to surrounding towns is included as Figure 1. In order to show the regional hydraulic gradient, the site was located on an excerpt of Plate 2, Ground-Water Map of Southern Lea County, New Mexico, from Ground-Water Report 6, "Geology and Ground-Water Conditions of Southern Lea County, New Mexico", from the State Bureau of Mines and Mineral Resources. The excerpt with the H-13 site located is included as Figure 2. As shown on Figure 2, the hydraulic gradient in this area matches the direction shown on the Groundwater Map (Figure 3) of the August 18, 2006 report. A copy of this figure is included as Figure 3.

If you have any questions or require any additional information, please advise.



Respectfully submitted,  
Highlander Environmental Corp.

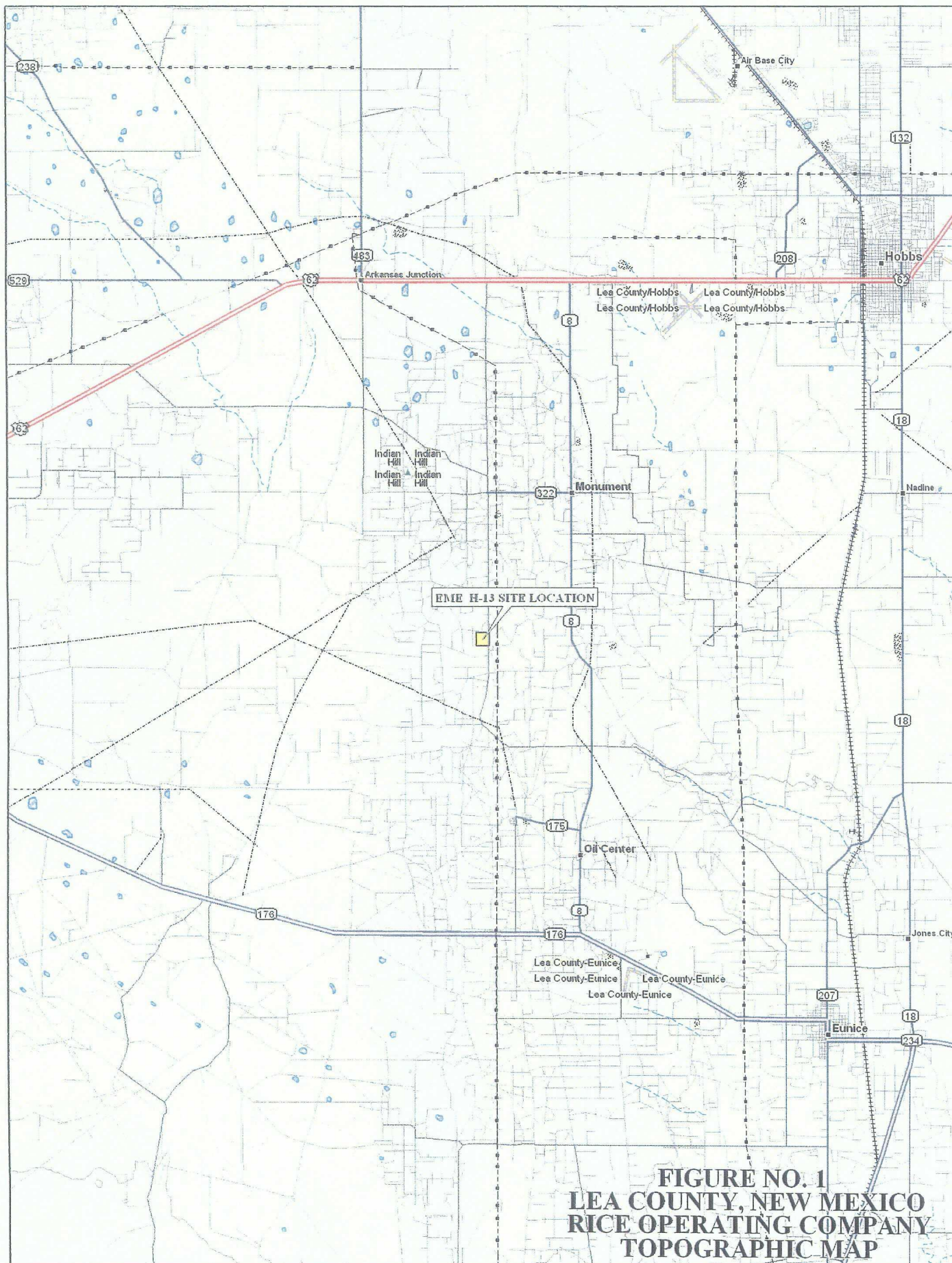
A handwritten signature in cursive script that reads "Tim Reed".

Timothy M. Reed, P.G.  
Vice President

cc: ROC, Edward Hansen-NMOCD, Daniel Sanchez -NMOCD  
enclosures: figures



## FIGURES



© 2002 DeLorme. 3-D TopoQuads®. Data copyright of content owner.  
 www.delorme.com

Scale 1 : 200,000  
 1" = 3.16 mi





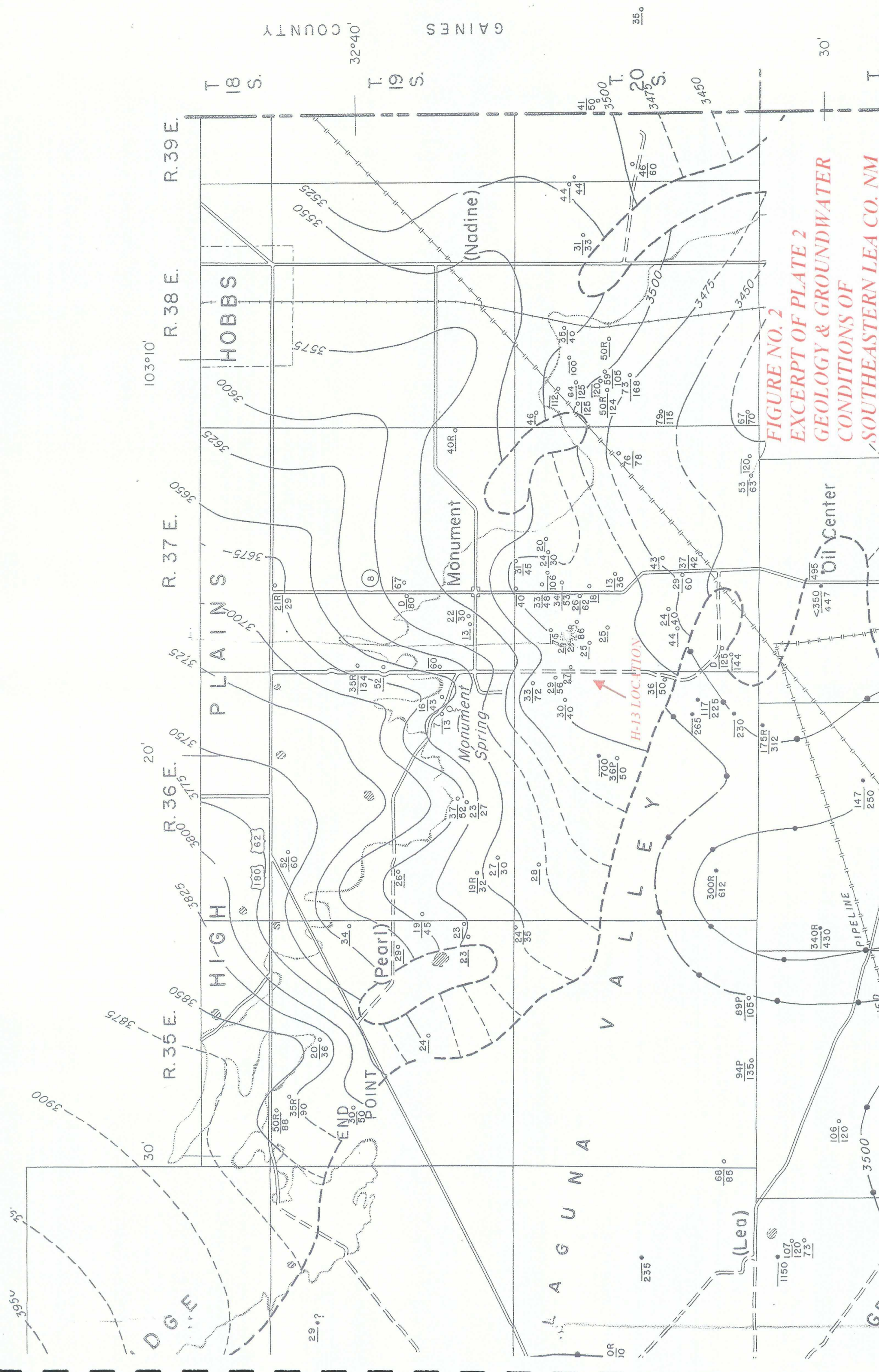


FIGURE NO. 2  
EXCERPT OF PLATE 2  
GEOLOGY & GROUNDWATER  
CONDITIONS OF  
SOUTHEASTERN LEA CO. NM

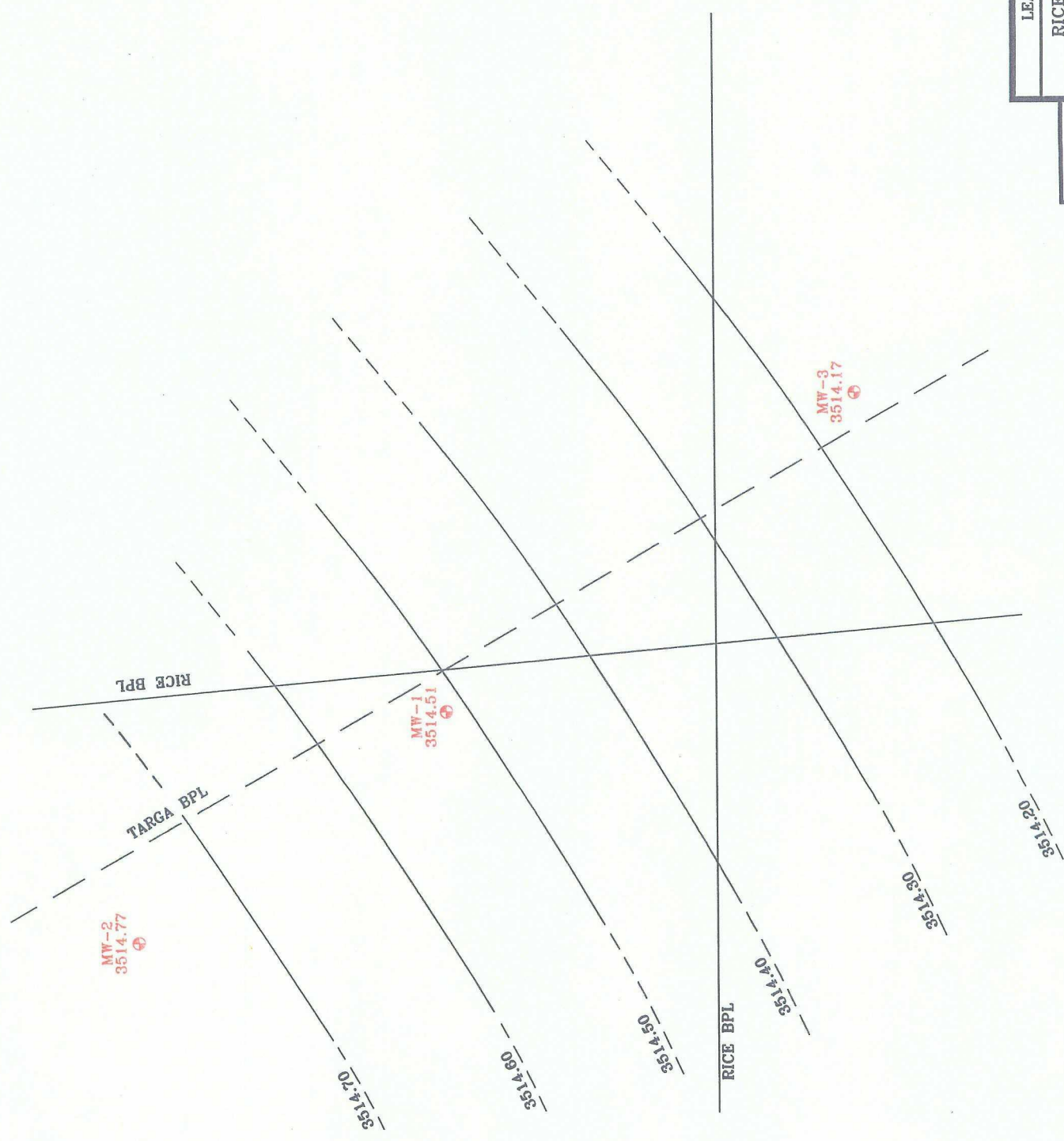




FIGURE NO. 3

LEA COUNTY, NEW MEXICO
RICE OPERATING COMPANY EME H-13 LEAK GROUNDWATER MAP
HIGHLANDER ENVIRONMENTAL CORP. MIDLAND, TEXAS

DATE: 8/17/06
DWN. BY: JJ
FILE: C:\NPER\3307 BTL.dwg



MONITOR WELL LOCATIONS

NOT TO SCALE