



OXY USA INC.
Box 50250, Midland, TX 79710

July 30, 1993

State of New Mexico
Oil Conservation Division
P. O. Box 2088
Santa Fe, New Mexico 88504

NSL-3292

Attention: Mr. Michael E. Stogner, Hearings Examiner

**Re: Application of OXY USA Inc. for Unorthodox Location Approval
for Wells No. 70, 71, 72, 73, & 74; Skelly Penrose "B" Unit,
Langlie Mattix Pool, Lea County, New Mexico**

Dear Mike:

OXY USA Inc. respectfully requests approval under statewide rule 104 (F) to drill and produce the subject wells at unorthodox locations. Attached are the C-102 forms for each of the wells, as well as a plat showing the Penrose "B" Unit and the locations of the subject wells therein. These locations are necessary to permit the completion of more efficient patterns within our Penrose "B" secondary recovery unit.

Under Rule 104 (F), we request that the Division approve the unorthodox locations for these wells without notice and hearing because they are not located any closer than 330 feet to the outer boundary of the unit, nor are they closer than 10 feet to any quarter-quarter section line.

If you have any questions relating to this application please call me at 915/685-5913. Thank you for considering our application.

Sincerely,

Rick

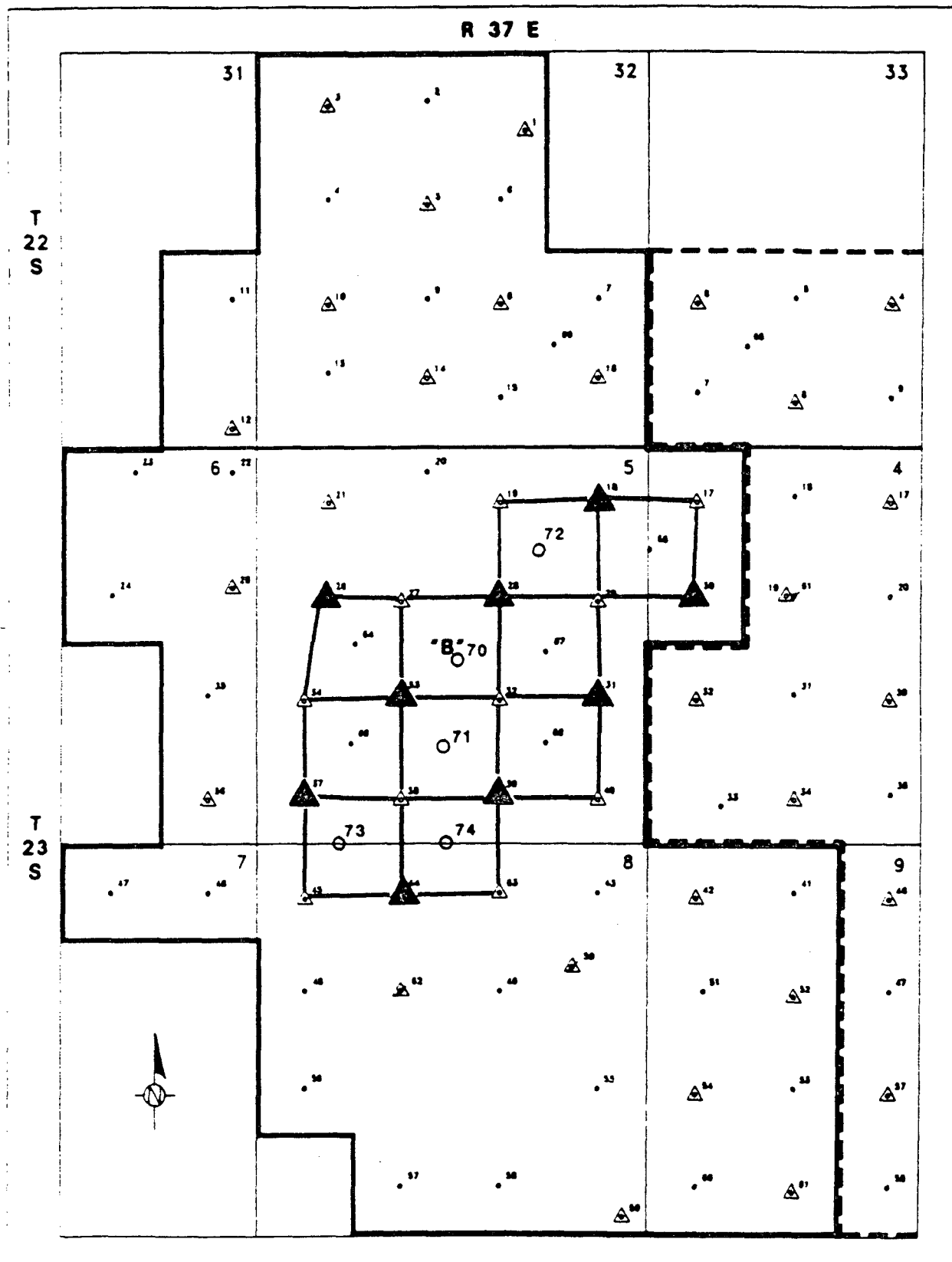
Richard E. Foppiano
Regulatory Affairs Advisor
Western Region - Midland

REF/ref
attachment

XC: David Stewart
Scott Gengler
Donna Pitzer, NMOCD (Hobbs Office)

c:\wp\docs\penrosb5

OIL CONSERVATION DIVISION
RECEIVED
93 AUG 2 AM 12 31



- PRODUCER
- △ WATER INJECTOR
- ✕ PLUGGED & ABANDONED
- PENROSE UNIT "B"
- PENROSE UNIT "A"

▲ CONVERT TO INJECTION

○ NEW PRODUCER (*locations not exact*)

DEY USA INC. - OPERATOR

PENROSE "B" UNIT

Lee County, New Mexico

Scale: 1"=2000'

Revised: 2/17/83

Submit to Appropriate
District Office
State Lease - 4 copies
Fee Lease - 3 copies

State of New Mexico
Energy, Minerals and Natural Resources Department

Form C-102
Revised 1-1-89

OIL CONSERVATION DIVISION

DISTRICT I
P.O. Box 1980, Hobbs, NM 88240

P.O. Box 2088

Santa Fe, New Mexico 87504-2088

DISTRICT II
P.O. Drawer DD, Artesia, NM 88210

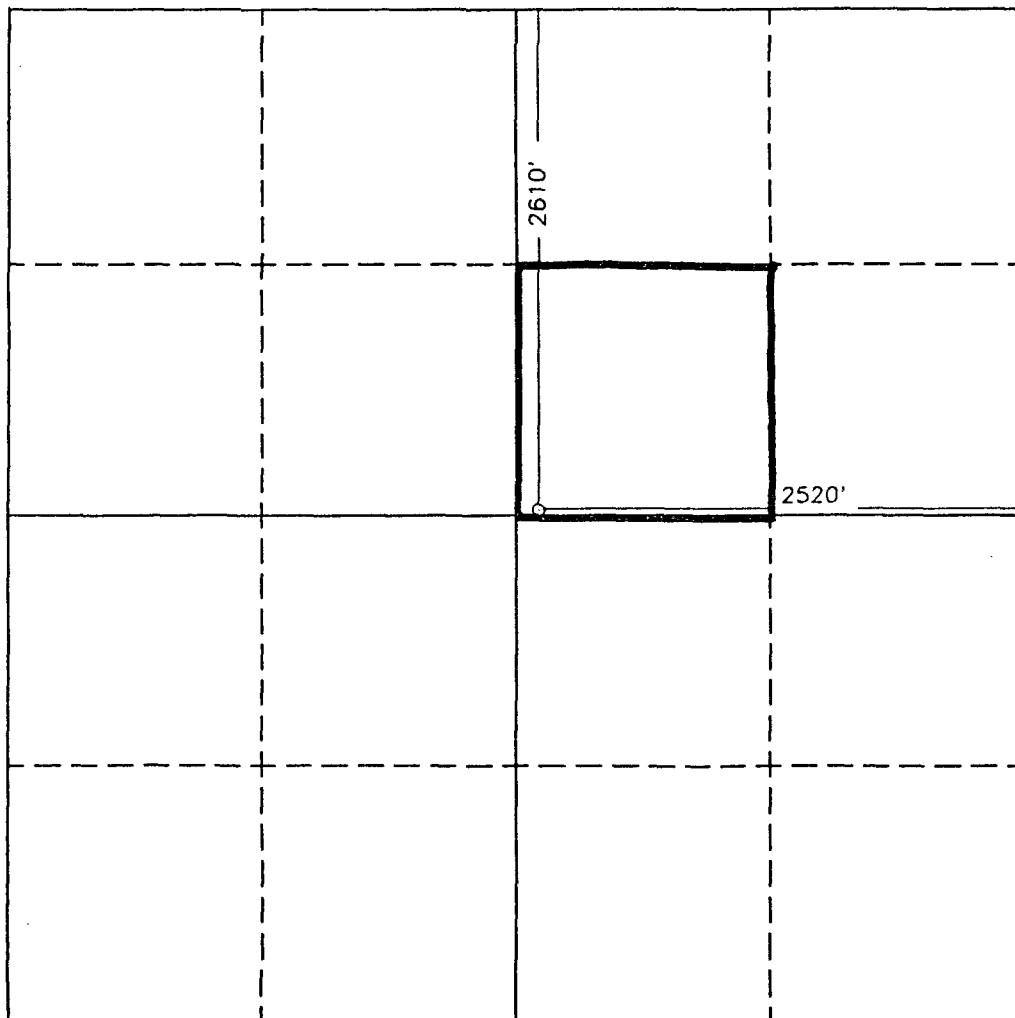
DISTRICT III
1000 Rio Brazos Rd., Aztec, NM 87410

WELL LOCATION AND ACREAGE DEDICATION PLAT

All Distances must be from the outer boundaries of the section

Operator OXY U.S.A. INC.			Lease PENROSE "B"		Well No. 70
Unit Letter G	Section 5	Township 23 SOUTH	Range 37 EAST	NMPM	County LEA
Actual Footage Location of Well: 2610 feet from the NORTH line and 2520 feet from the EAST line					
Ground Level Elev. 3340.8	Producing Formation Syn Rvr - Qn - GB		Pool Langlie Mattix		Dedicated Acreage: 40 Acres

- Outline the acreage dedicated to the subject well by colored pencil or hatchure marks on the plat below.
- If more than one lease is dedicated to the well, outline each and identify the ownership thereof (both as to working interest and royalty).
- If more than one lease of different ownership is dedicated to the well, have the interest of all owners been consolidated by communitization, unitization, force-pooling, etc.?
☒ Yes ☐ No If answer is "yes" type of consolidation Unitization R-2915
If answer is "no" list of owners and tract descriptions which have actually been consolidated. (Use reverse side of this form necessary.)
No allowable will be assigned to the well unit all interests have been consolidated (by communitization, unitization, forced-pooling, otherwise) or until a non-standard unit, eliminating such interest, has been approved by the Division.



0 330 660 990 1320 1650 1980 2310 2640 2000 1500 1000 500 0

OPERATOR CERTIFICATION

I hereby certify the the information
contained herein is true and complete to the
best of my knowledge and belief.

Signature
C.W. Pollard
Printed Name
C.W. Pollard
Position
Oper. Engr. Supr.
Company
OXY USA Inc.
Date
7/12/93

SURVEYOR CERTIFICATION

I hereby certify that the well location shown
on this plat was plotted from field notes of
actual surveys made by me or under my
supervision, and that the same is true and
correct to the best of my knowledge and
belief.

Date Surveyed
MAY 15, 1993
Signature & Seal of
Professional Surveyor

GARY L JONES
NEW MEXICO
1997
Certificate No. RONALD J. JONES, 876
RONALD J. JONES, 8230
GARY L JONES, 7877
95-11-0839

Submit to Appropriate
District Office
State Lease - 4 copies
Fee Lease - 3 copies

State of New Mexico
Energy, Minerals and Natural Resources Department

Form C-102
Revised 1-1-89

OIL CONSERVATION DIVISION

DISTRICT I
P.O. Box 1980, Hobbs, NM 88240

P.O. Box 2088
Santa Fe, New Mexico 87504-2088

DISTRICT II
P.O. Drawer DD, Artesia, NM 88210

DISTRICT III
1000 Rio Brazos Rd., Aztec, NM 87410

WELL LOCATION AND ACREAGE DEDICATION PLAT

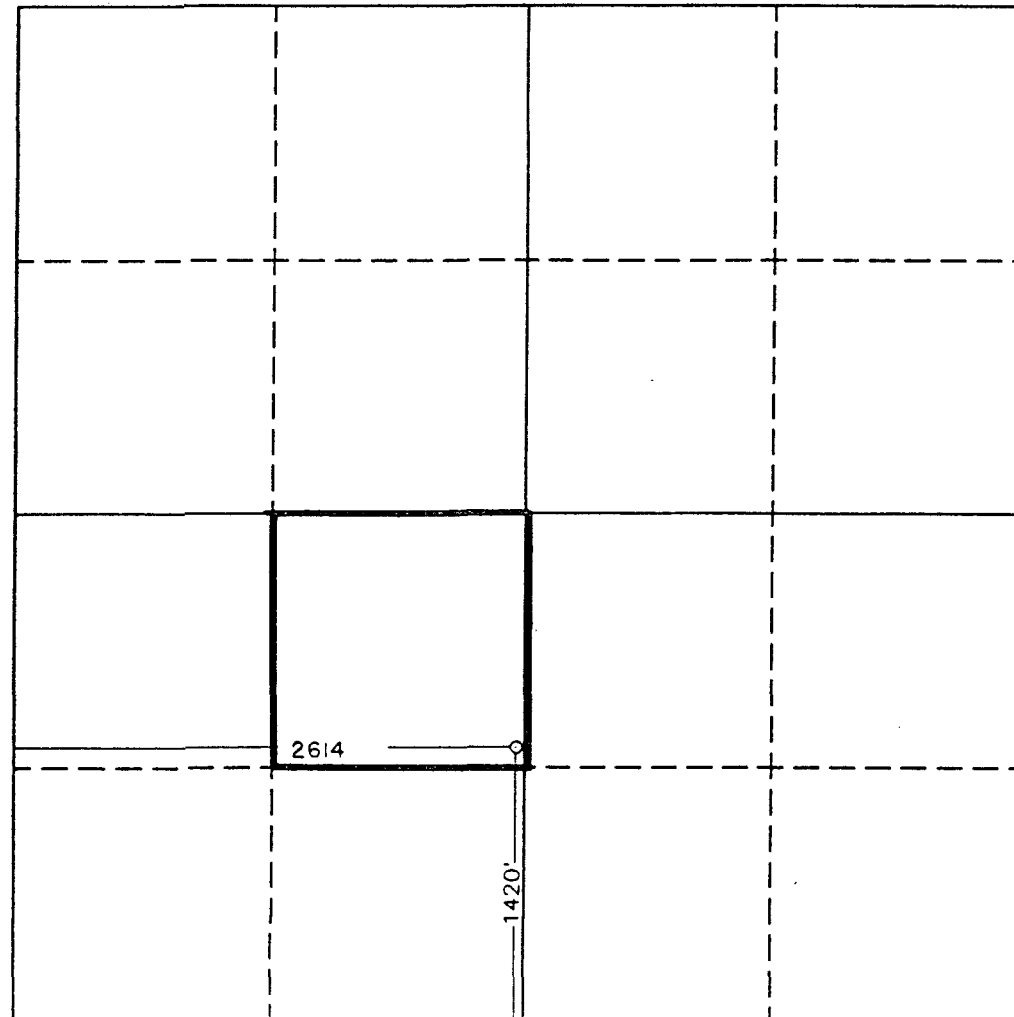
All Distances must be from the outer boundaries of the section

Operator OXY U.S.A. INC.			Lease PENROSE "B"		Well No. 71
Unit Letter K	Section 5	Township 23 SOUTH	Range 37 EAST	County LEA	
Actual Footage Location of Well: 1420 feet from the SOUTH line and 2614 feet from the WEST line					
Ground Level Elev. 3334.6	Producing Formation Svn Rvr - QN - GB	Pool Langlie Mattix		Dedicated Acreage: 40 Acres	

- Outline the acreage dedicated to the subject well by colored pencil or hachure marks on the plat below.
- If more than one lease is dedicated to the well, outline each and identify the ownership thereof (both as to working interest and royalty).
- If more than one lease of different ownership is dedicated to the well, have the interest of all owners been consolidated by communitization, unitization, force-pooling, etc?
☒ Yes ☐ No If answer is "yes" type of consolidation Unitization R-2915

If answer is "no" list of owners and tract descriptions which have actually been consolidated. (Use reverse side of this form necessary.)

No allowable will be assigned to the well unit all interests have been consolidated (by communitization, unitization, forced-pooling, otherwise) or until a non-standard unit, eliminating such interest, has been approved by the Division.



0 330 660 990 1320 1650 1980 2310 2640 2000 1500 1000 500 0

OPERATOR CERTIFICATION

I hereby certify the the information contained herein is true and complete to the best of my knowledge and belief.

Signature
C.W. Pollard
Printed Name
C.W. Pollard
Position
Oper. Engr. Supr.
Company
OXY USA Inc.
Date
7/12/93

SURVEYOR CERTIFICATION

I hereby certify that the well location shown on this plat was plotted from field notes of actual surveys made by me or under my supervision, and that the same is true and correct to the best of my knowledge and belief.

Date Surveyed
MAY 27, 1993

Signature & Seal of
Professional Surveyor

John W. West
Certificate No. JOHN W. WEST, 878
RONALD J. EDSON, 3239
GARY C. JONES, 7977

93-11-0993

OIL CONSERVATION DIVISION

P.O. Box 2088
Santa Fe, New Mexico 87504-2088

DISTRICT I

P.O. Box 1980, Hobbs, NM 88240

DISTRICT II

P.O. Drawer DD, Artesia, NM 88210

DISTRICT III

1000 Rio Brazos Rd., Aztec, NM 87410

WELL LOCATION AND ACREAGE DEDICATION PLAT

All Distances must be from the outer boundaries of the section

Operator OXY U.S.A. INC.			Lease PENROSE "B"		Well No. 72
Unit Letter B	Section 5	Township 23 SOUTH	Range 37 EAST	NMPM	County LEA
Actual Footage Location of Well: 1220 feet from the NORTH line and 1370 feet from the EAST line					
Ground Level Elev. 3356.6	Producing Formation Svn Rvr - Qn - GB		Pool Langlie Mattix		Dedicated Acreage: 40 Acres
<p>1. Outline the acreage dedicated to the subject well by colored pencil or hatchure marks on the plat below.</p> <p>2. If more than one lease is dedicated to the well, outline each and identify the ownership thereof (both as to working interest and royalty).</p> <p>3. If more than one lease of different ownership is dedicated to the well, have the interest of all owners been consolidated by communitization, unitization, force-pooling, etc.? <input checked="" type="checkbox"/> Yes <input type="checkbox"/> No If answer is "yes" type of consolidation <u>Unitization R-2915</u></p> <p>If answer is "no" list of owners and tract descriptions which have actually been consolidated. (Use reverse side of this form necessary.)</p> <p>No allowable will be assigned to the well unit all interests have been consolidated (by communitization, unitization, forced-pooling, otherwise) or until a non-standard unit, eliminating such interest, has been approved by the Division.</p>					
					OPERATOR CERTIFICATION <p>I hereby certify the the information contained herein is true and complete to the best of my knowledge and belief.</p> <p>Signature <u>C.W. Pollard</u> Printed Name <u>C.W. Pollard</u> Position <u>Oper. Engr. Supr.</u> Company <u>OXY USA Inc.</u> Date <u>7/12/93</u></p>
					SURVEYOR CERTIFICATION <p>I hereby certify that the well location shown on this plat was plotted from field notes of actual surveys made by me or under my supervision, and that the same is true and correct to the best of my knowledge and belief.</p> <p>Date Surveyed <u>MAY 15, 1993</u> Signature <u>[Signature]</u> Professional Seal of <u>GARY L. JONES</u> NEW MEXICO 7977 Certification No. <u>JOHN W. WEST, 876</u> <u>RONALD L. EDSON, 3239</u> <u>GARY L. JONES, 7977</u></p> <p>93-11-0841</p>

Submit to Appropriate
District Office
State Lease - 4 copies
Fee Lease - 3 copies

State of New Mexico
Energy, Minerals and Natural Resources Department

Form C-102
Revised 1-1-89

OIL CONSERVATION DIVISION

P.O. Box 2088

Santa Fe, New Mexico 87504-2088

DISTRICT I

P.O. Box 1980, Hobbs, NM 88240

DISTRICT II

P.O. Drawer DD, Artesia, NM 88210

DISTRICT III

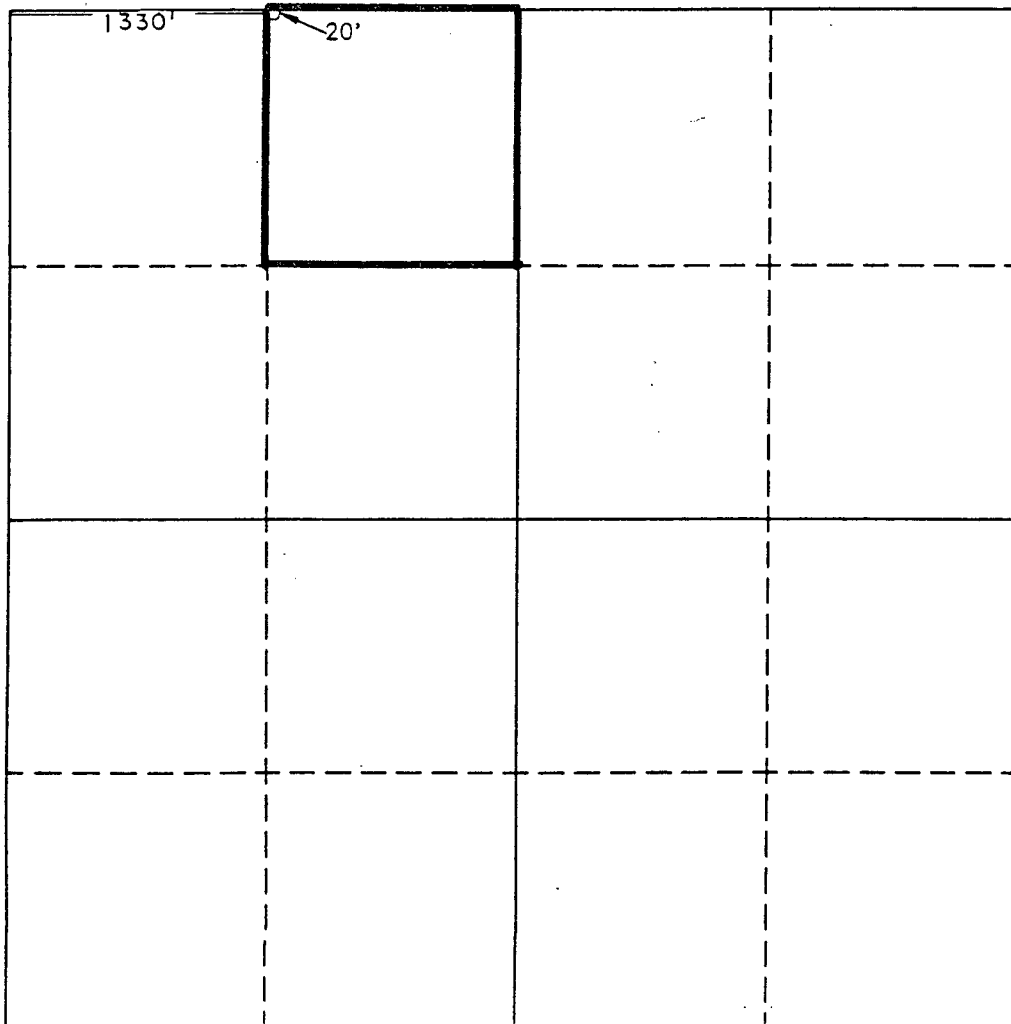
1000 Rio Brazos Rd., Aztec, NM 87410

WELL LOCATION AND ACREAGE DEDICATION PLAT

All Distances must be from the outer boundaries of the section

Operator OXY U.S.A. INC.			Lease PENROSE "B"		Well No. 73
Unit Letter C	Section 8	Township 23 SOUTH	Range 37 EAST	NMPM	County LEA
Actual Footage Location of Well: 20 feet from the NORTH line and 1330' feet from the WEST line					
Ground Level Elev. 3338.4	Producing Formation Svn Rvr - QN - GB		Pool Langlie Mattix		Dedicated Acreage: 40 Acres

- Outline the acreage dedicated to the subject well by colored pencil or hachure marks on the plat below.
- If more than one lease is dedicated to the well, outline each and identify the ownership thereof (both as to working interest and royalty).
- If more than one lease of different ownership is dedicated to the well, have the interest of all owners been consolidated by communization, unitization, force-pooling, etc.?
☒ Yes ☐ No If answer is "yes" type of consolidation Unitization R-2915
If answer is "no" list of owners and tract descriptions which have actually been consolidated. (Use reverse side of this form necessary.)
No allowable will be assigned to the well unit all interests have been consolidated (by communization, unitization, forced-pooling, otherwise) or until a non-standard unit, eliminating such interest, has been approved by the Division.



OPERATOR CERTIFICATION

I hereby certify the the information contained herein is true and complete to the best of my knowledge and belief.

Signature
C.W. Pollard
Printed Name

C.W. Pollard

Position
Oper. Engr. Supr.

Company
OXY USA Inc.

Date
7/12/93

SURVEYOR CERTIFICATION

I hereby certify that the well location shown on this plat was plotted from field notes of actual surveys made by me or under my supervision, and that the same is true and correct to the best of my knowledge and belief.

Date Surveyed
MAY 27, 1993

Signature & Seal of
Professional Surveyor
GARY L. JONES
NEW MEXICO
REGISTERED PROFESSIONAL SURVEYOR
7977
Certified No. JOHN W. WEST 676
RONALD W. EDSON 3238
GARY L. JONES 7977

93-11-0993

Submit to Appropriate
District Office
State Lease - 4 copies
Fee Lease - 3 copies

State of New Mexico
Energy, Minerals and Natural Resources Department

Form C-102
Revised 1-1-89

OIL CONSERVATION DIVISION

P.O. Box 2088
Santa Fe, New Mexico 87504-2088

DISTRICT I

P.O. Box 1980, Hobbs, NM 88240

DISTRICT II

P.O. Drawer DD, Artesia, NM 88210

DISTRICT III

1000 Rio Brazos Rd., Aztec, NM 87410

WELL LOCATION AND ACREAGE DEDICATION PLAT

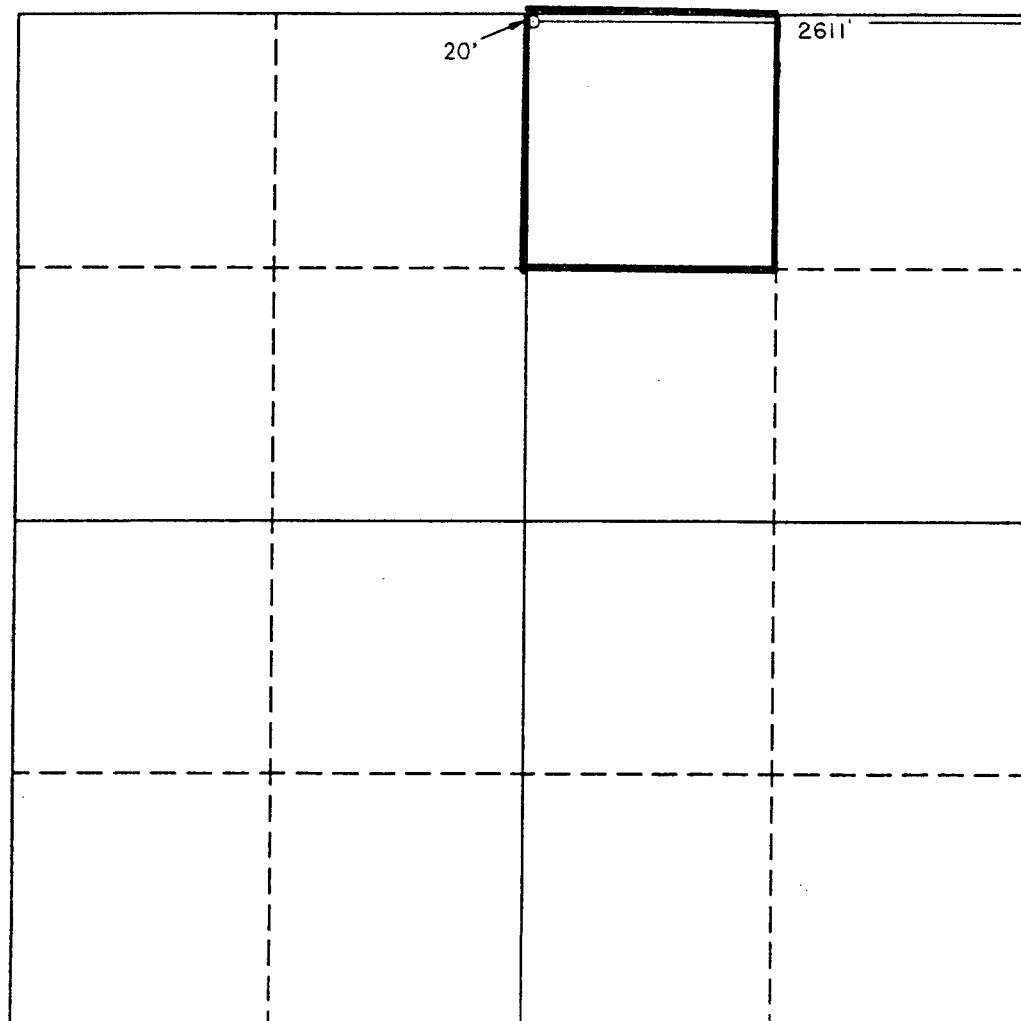
All Distances must be from the outer boundaries of the section

Operator OXY U.S.A. INC.			Lease PENROSE "B"		Well No. 74
Unit Letter B	Section 8	Township 23 SOUTH	Range 37 EAST	NMPM	County LEA
Actual Footage Location of Well: 20 feet from the NORTH line and 2611' feet from the EAST line					
Ground Level Elev. 3329.8	Producing Formation Svn Rvr - QN - GB		Pool Langlie Mattix		Dedicated Acreage: 40 Acres

1. Outline the acreage dedicated to the subject well by colored pencil or hachure marks on the plat below.
2. If more than one lease is dedicated to the well, outline each and identify the ownership thereof (both as to working interest and royalty).
3. If more than one lease of different ownership is dedicated to the well, have the interest of all owners been consolidated by communitization, unitization, force-pooling, etc.?
☒ Yes ☐ No If answer is "yes" type of consolidation Unitization R-2915

If answer is "no" list of owners and tract descriptions which have actually been consolidated. (Use reverse side of this form necessary.)

No allowable will be assigned to the well unit all interests have been consolidated (by communitization, unitization, forced-pooling, otherwise) or until a non-standard unit, eliminating such interest, has been approved by the Division.



OPERATOR CERTIFICATION

I hereby certify the the information contained herein is true and complete to the best of my knowledge and belief.

Signature
C.W. Pollard
Printed Name
C.W. Pollard
Position
Oper. Engr. Supr.
Company
OXY USA Inc.
Date
7/12/93

SURVEYOR CERTIFICATION

I hereby certify that the well location shown on this plat was plotted from field notes of actual surveys made by me or under my supervision, and that the same is true and correct to the best of my knowledge and belief.

Date Surveyed
MAY 27, 1993

Signature & Seal of
Professional Surveyor

GARY L. JONES
GARY L. JONES
NEW MEXICO
1993
Certificate No. JOHN W. WEST 676
RONALD E. EDISON 8230
GARY L. JONES 7977
93-11-1993



STATE OF NEW MEXICO
ENERGY, MINERALS AND NATURAL RESOURCES DEPARTMENT
OIL CONSERVATION DIVISION
HOBBS DISTRICT OFFICE

OIL CONSERVATION DIVISION
RECEIVED

'93 JUL 19 AM 9 49

BRUCE KING
GOVERNOR

July 14, 1993

POST OFFICE BOX 1980
HOBBS, NEW MEXICO 88241-1980
(505) 393-6161

OIL CONSERVATION DIVISION
P. O. BOX 2088
SANTA FE, NEW MEXICO 87501

RE: Proposed:

MC _____
DHC _____
NSL X _____
NSP _____
SWD _____
WFX _____
PMX _____

NS-3292

Gentlemen:

Skelly Penrose B Unit	#74-B	8-23-37
Skelly Penrose B Unit	#73-C	8-23-37
Skelly Penrose B Unit	#72-B	5-23-37

I have examined the application for the:

OXY USA Inc.	Skelly Penrose B Unit	#71-K	5-23-37
	Skelly Penrose B Unit	#70-G	5-23-37
Operator	Lease & Well No.	Unit	S-T-R

and my recommendations are as follows:

OK

Yours very truly,

Jerry Sexton
Jerry Sexton
Supervisor, District 1

/ed