

*copy sent to E. Busch 8/1/93*

# MERIDIAN OIL

August 3, 1993

Sent Federal Express

Mr. William LeMay  
New Mexico Oil Conservation Division  
Post Office Box 2088  
Santa Fe, New Mexico 87501

Re: Meridian Oil Inc. Jicarilla 98 #10A  
1865'FSL, 1360'FEL Section 17, T-26-N, R-3-W  
Rio Arriba County, New Mexico

Dear Mr. LeMay:

Meridian Oil Inc. is applying for administrative approval of a non-standard location for the above location in both the Mesa Verde and Pictured Cliffs formations. This application for the referenced location is due to terrain as shown on the topographic map, and at the request of the Jicarilla Apache Tribe.

This well is planned as a Mesa Verde/Pictured Cliffs commingle and application is being made to the New Mexico Oil Conservation Division for the commingling.

The following attachments are for your review:

1. Application for Permit to Drill.
2. Completed C-102 at referenced location.
3. Offset operators/owners plat and affidavit of notification..
4. 7.5 minute topographic map showing the orthodox windows for the south half dedication for the Mesa Verde and southeast quarter dedication for the Pictured Cliffs and enlargement of the map to define topographic features.
5. If the well were directionally drilled to a standard bottom hole location, the economics would be severely burdened due to the incremental directional drilling costs of \$200,000.

A copy of this application is being submitted to all offset owners/ operators by certified mail with a request that they furnish you with a Waiver of Objection, and return one copy to this office.

Sincerely,



Peggy Bradfield  
Regulatory/Compliance Representative  
encs.

## WAIVER

\_\_\_\_\_ hereby waives objection to Meridian Oil Inc.'s application for a non-standard location for their Jicarilla 98 #10A as proposed above.

By: \_\_\_\_\_ Date: \_\_\_\_\_

xc: Consolidated Oil & Gas Corp.  
Jerome P. McHugh

UNITED STATES  
DEPARTMENT OF THE INTERIOR  
BUREAU OF LAND MANAGEMENT

APPLICATION FOR PERMIT TO DRILL, DEEPEN, OR PLUG BACK

<b>1a. Type of Work</b> DRILL	<b>5. Lease Number</b> Jicarilla Contract 98
<b>1b. Type of Well</b> GAS	<b>6. If Indian, All. or Tribe</b> Jicarilla Apache
<b>2. Operator</b> <b>MERIDIAN OIL</b>	<b>7. Unit Agreement Name</b>
<b>3. Address &amp; Phone No. of Operator</b> PO Box 4289, Farmington, NM 87499  (505) 326-9700	<b>8. Farm or Lease Name</b> Jicarilla 98  <b>9. Well Number</b> 10A
<b>4. Location of Well</b> 1865' FSL, 1360' FEL  Latitude 36° 29' 03", Longitude 108° 09' 48"	<b>10. Field, Pool, Wildcat</b> Tapacitos Pic Cliffs/ Blanco Mesa Verde  <b>11. Sec., Twn, Rge, Mer.</b> Sec 17, T-26-N, R-3-W NMPM
<b>14. Distance in Miles from Nearest Town</b> 35 miles to Dulce, NM	<b>12. County</b> Rio Arriba
	<b>13. State</b> NM
<b>15. Distance from Proposed Location to Nearest Property or Lease Line</b> 1360'	
<b>16. Acres in Lease</b>	<b>17. Acres Assigned to Well</b> 160 (SE/4) & 320 (S/2)
<b>18. Distance from Proposed Location to Nearest Well, Drlg, Compl, or Applied for on this Lease</b> 2000'	
<b>19. Proposed Depth</b> 6495'	<b>20. Rotary or Cable Tools</b> Rotary
<b>21. Elevations (DF, FT, GR, Etc.)</b> 7128' GR	<b>22. Approx. Date Work will Start</b> 3rd quarter 1993
<b>23. Proposed Casing and Cementing Program</b> See Operations Plan attached	
<b>24. Authorized by:</b> <u>Donald C. Libbey</u> Regional Drilling Engineer	<u>7/29/93</u> Date

PERMIT NO. _____	APPROVAL DATE _____
APPROVED BY _____	TITLE _____ DATE _____

Archaeological Report submitted 7-5-93 f/JAAS  
Threatened and Endangered Species Report submitted  
NOTE: This format is issued in lieu of U.S. BLM Form 3160-3

Submit to Assessor  
District Office  
State Taxes - 4 copies  
Fee Taxes - 3 copies

State of New Mexico  
Energy, Minerals and Natural Resources Department

Form C-102  
Revised 1-1-89

OIL CONSERVATION DIVISION

P.O. Box 2088  
Santa Fe, New Mexico 87504-2088

DISTRICT I  
P.O. Box 1980, Hobbs, NM 88240

DISTRICT II  
P.O. Drawer 00, Artesia, NM 88210

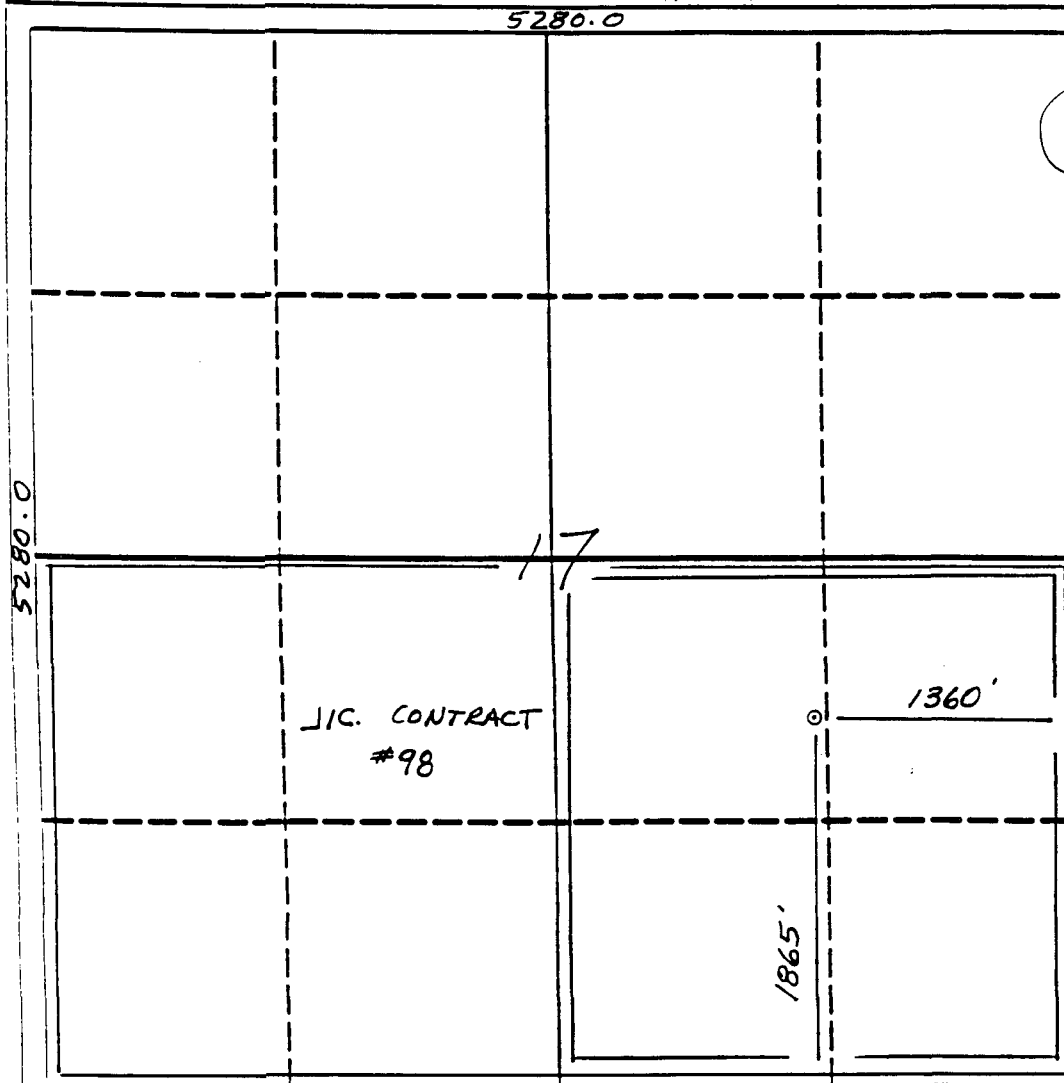
DISTRICT III  
1000 Rio Arriba S.E., Aztec, NM 87410

WELL LOCATION AND ACREAGE DEDICATION PLAT

All Distances must be from the outer boundaries of the section

Operator Meridian Oil Inc.		Lease Jicarilla 98		Well No. 10A
Unit Letter J	Section 17	Township 26 North	Range 3 West	County Rio Arriba
Actual Footage Location of Well: 1865 feet from the South line and 1360 feet from the East line				
Ground level Elev. 7128'	Producing Formation Pictured Cliffs/Mesa Verde		Pool Tapacitos/Blanco	Dedicated Acreage: 160/320 Acres

- Outline the acreage dedicated to the subject well by correct pencil or inked marks on the plat below.
- If more than one lease is dedicated to the well, outline each and identify the ownership thereof (both as to working interest and royalty).
- If more than one lease of different ownership is dedicated to the well, have the interest of all owners been consolidated by communitization, unitization, forced-pooling, etc.?  
☐ Yes ☐ No If answer is "yes" type of consolidation \_\_\_\_\_  
If answer is "no" list the owners and tract descriptions which have actually been consolidated. (Use reverse side of this form if necessary).  
No allowable will be assigned to the well until all interests have been consolidated (by communitization, unitization, forced-pooling, or otherwise) or until a non-standard unit, eliminating such interest, has been approved by the Division.



OPERATOR CERTIFICATION

I hereby certify that the information contained herein is true and complete to the best of my knowledge and belief.

*Peggy Bradfield*  
Signature

Peggy Bradfield

Printed Name

Regulatory Representative

Position

Meridian Oil Inc.

Company

7-28-93

Date

SURVEYOR CERTIFICATION

I hereby certify that the well location shown on this plat was plotted from field notes of actual surveys made by me or under my supervision, and that the same is true and correct to the best of my knowledge and belief.

6-28-93

Date Surveyed

*C. EDWARDS*  
Name

Signature of Surveyor  
Professional Surveyor

9857

License No.

6857

July 29, 1993

OPERATIONS PLAN

Well Name: Jicarilla 98 #10A  
Location: 1865'FSL, 1360'FEL Section 17, T-26-N, R-3-W  
 Rio Arriba County, New Mexico  
 Latitude 36° 29' 03", Longitude 108° 09' 48"  
Formation: Tapacitos Pictured Cliffs/Blanco Mesa Verde  
Elevation: 7128'GL

<u>Formation Tops:</u>	<u>Top</u>	<u>Bottom</u>	<u>Contents</u>
Surface	San Jose	3390'	
Ojo Alamo	3390'	3510'	aquifer
Kirtland	3510'	3575'	
Fruitland	3575'	3810'	gas
Pictured Cliffs	3810'	3990'	gas
Lewis	3990'	4750'	
Chacra	4750'	5490'	gas
Mesa Verde	5490'	5560'	gas
Menefee	5560'	5945'	gas
Point Lookout	5945'	6495'	gas
<b>Total Depth</b>	<b>6495'</b>		

Logging Program:

Mud Logs/Coring/DST -  
 Mud logs - 3500' to Total Depth  
 Coring - none  
 DST - none

Mud Program:

<u>Interval</u>	<u>Type</u>	<u>Weight</u>	<u>Vis.</u>	<u>Fluid Loss</u>
0- 200'	Spud	8.4-8.9	40-50	no control
200-6495'	LSND	8.4-9.1	30-60	no control

Pit levels will be visually monitored to detect gain or loss of fluid control.

Casing Program:

<u>Hole Size</u>	<u>Depth Interval</u>	<u>Csg.Size</u>	<u>Wt.</u>	<u>Grade</u>
12 1/4"	0' - 200'	8 5/8"	24.0#	K-55
7 7/8"	0' - 6495'	4 1/2"	10.5#	K-55

Tubing Program:

0' - 6495'	2 3/8"	4.7#	J-55 EUE
------------	--------	------	----------

BOP Specifications, Wellhead and Tests:

**Surface to TD -**

11" 2000 psi minimum double gate BOP stack (Reference Figure #1). After nipple-up prior to drilling out surface casing, rams and casing will be tested to 600 psi for 30 minutes.

2" nominal, 2000 psi minimum choke manifold (Reference Figure #3).

**Completion Operations -**

6" 3000 psi double gate BOP stack (Reference Figure #2). After nipple-up prior to completion, pipe rams and casing top will be tested to 3000 psi for 15 minutes.

**Surface to Total Depth -**

2" nominal, 2000 psi minimum choke manifold (Reference Figure #3).

**Wellhead -**

8 5/8" x 4 1/2" x 2 3/8" x 3000 psi tree assembly.

**General -**

- Pipe rams will be actuated once each day and blind rams will be actuated once each trip to test proper functioning.
- An upper kelly cock valve with handle available and drill string valves to fit each drill string will be available on the rig floors at all times.
- A BOP pit level drill will be conducted weekly for each drilling crew.
- All of the BOP tests and drills will be recorded in the daily drilling reports.
- Blind and pipe rams will be equipped with extension hand wheels.

Cementing:

**8 5/8" surface casing -**

Cement to surface w/140 sx Class "B" cement w/3% calcium chloride and 1/4#/sx cellophane flakes (165 cu.ft. of slurry, 100% excess to circulate to surface.) WOC 12 hours prior to drilling out surface casing. Test casing to 600 psi for 30 minutes.

Saw tooth guide shoe on bottom. Bowspring centralizers will be run in accordance with Onshore Order #2.

**Production Casing - 4 1/2"**

First Stage: Cement to circulate to stage tool @ 4090'. Lead w/553 sx 65/35 Class "B" Pozmix w/6% gel, 2% calcium chloride, and 1/4#/sx cellophane flakes. Tail w/100 sx Class "B" cement w/2% calcium chloride. WOC 4 hours prior to pumping second stage. (Slurry volume: 1097 cu.ft. Excess slurry 100%.)

Second Stage: Cement to circulate to surface. Lead w/987 sx 65/35 Class "B" Pozmix w/6% gel, 2% calcium chloride, and 1/4#/sx cellophane flakes. Tail w/100 sx Class "B" cement w/2% calcium chloride. WOC a minimum of 18 hours prior to cleanout. (Slurry volume: 1865 cu.ft. Excess slurry: 100%.)

Float shoe on bottom. Three centralizers run every other joint above shoe. Two turbolizing type centralizers - one below and one into the base of the Ojo Alamo @ 3510'. Standard centralizers thereafter every fourth joint up to the base of the surface pipe.

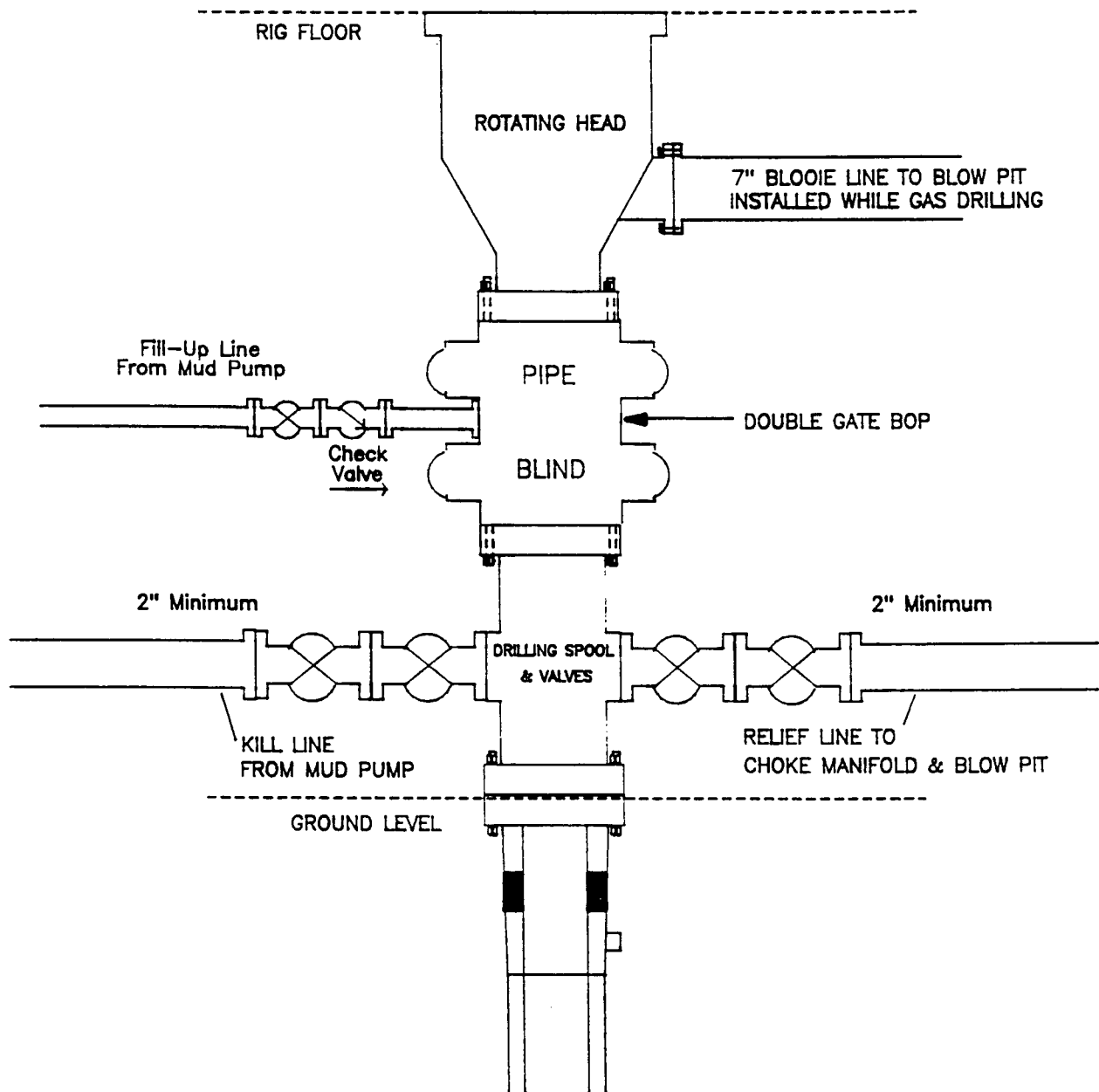
- If hole conditions permit, an adequate water spacer will be pumped ahead of each cement job to prevent cement/ mud contamination or cement hydration.
- The pipe will be rotated and/or reciprocated, if hole conditions permit.

Additional Information:

- Pictured Cliffs and Mesa Verde formations will be completed and commingled per New Mexico Oil Conservation Division Order.
- No abnormal temperatures or hazards are anticipated.
- Sufficient LCM will be added to the mud system to maintain well control, if lost circulation is encountered below the top of the Pictured Cliffs.
- The South half of Section 17 is dedicated to the Mesa Verde and the Southeast quarter is dedicated to the Pictured Cliffs.
- This gas is dedicated.
- New casing will be utilized.
- Pipe movement (either rotation or reciprocation) will be done if hole conditions permit.

# MERIDIAN OIL INC.

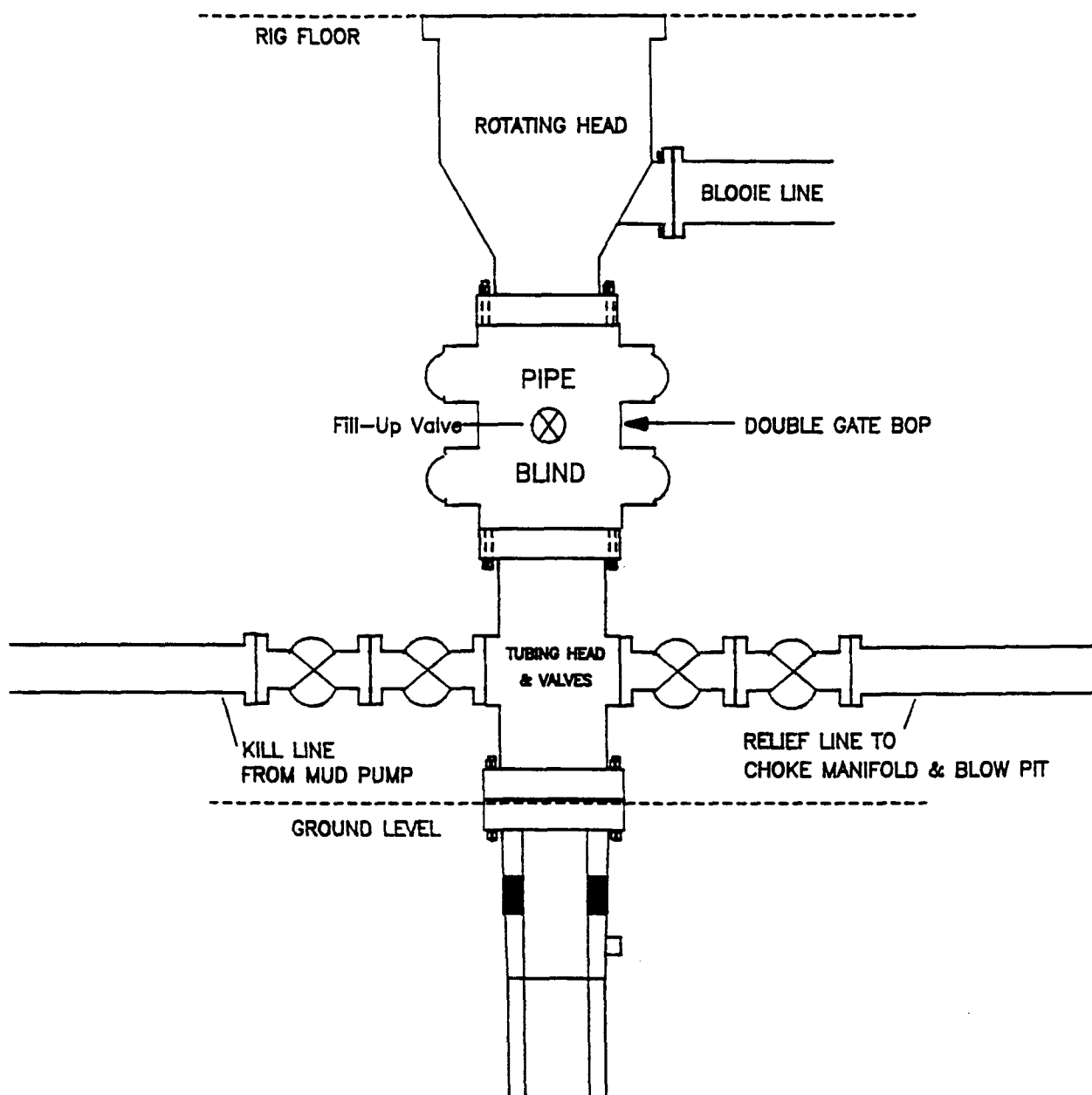
## Mesaverde Well BOP Configuration



Minimum BOP installation for a Mesaverde well from Surface to Total Depth. 11" Bore, 2000psi minimum working pressure double gate BOP to be equipped with blind and pipe rams. A Schaffer Type 50 or equivalent rotating head to be installed on the top of the BOP. All equipment is 2000psi working pressure or greater.

**Figure #1**

**MERIDIAN OIL INC.**  
Mesaverde Well – Completion Rig  
BOP Configuration

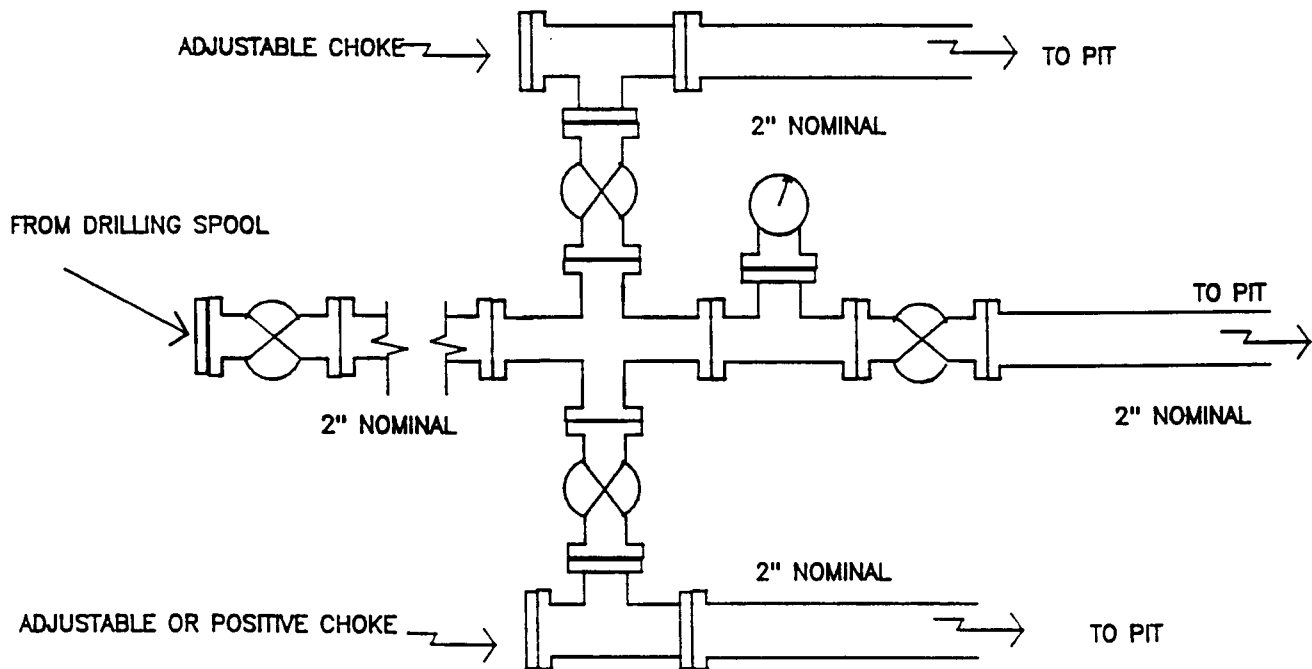


Minimum BOP installation for Completion Operations. 7 1/16" Bore (6" Nominal), 3000psi minimum working pressure double gate BOP to be equipped with blind and pipe rams.

**Figure #2**



**MERIDIAN OIL INC.**  
Mesaverde Well  
Choke Manifold Configuration



Minimum choke manifold installation from surface to Total Depth.  
2" minimum, 2000psi working pressure equipment with two chokes.

**Figure #3**

# **MERIDIAN OIL**

Jicarilla 98 #10A

## **Multi-Point Surface Use Plan**

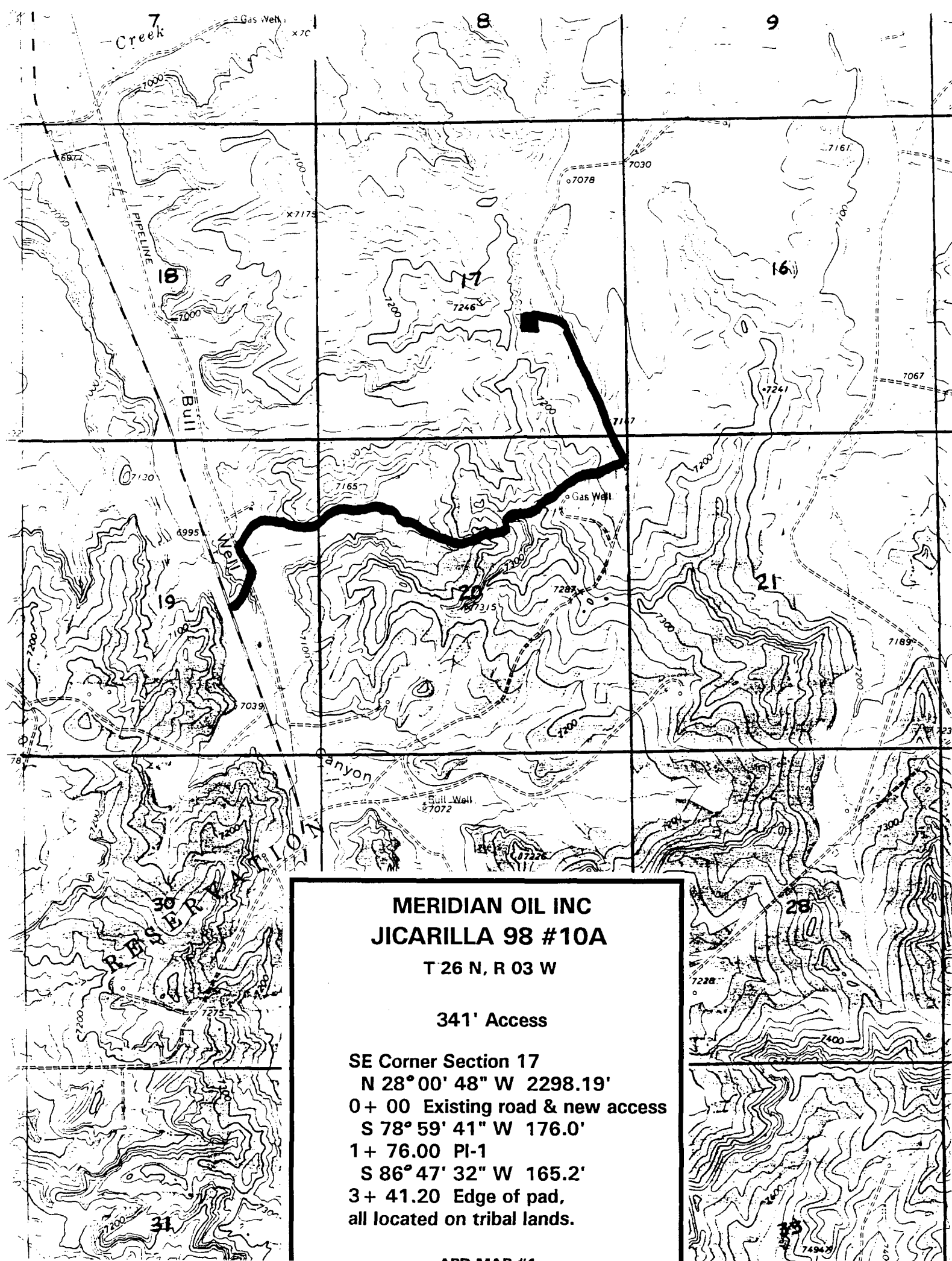
1. Existing Roads - Refer to Map No. 1. Existing roads used to access the proposed location will be properly maintained for the duration of the project. Bureau of Land Management right-of-way has been applied for as shown on Map No. 1.
2. Planned Access Road - Refer to Map No. 1. The required new access road is shown on Map No. 1. The gradient, shoulder, crowning and other design elements will meet or exceed those specified by the responsible government agency. The new access road surface will not exceed twenty feet (20') in width. No additional turnarounds or turnouts will be required. Upon completion of the project, the access road will be adequately drained to control soil erosion. Approximately 341' of access road will be constructed. Pipelines are indicated on Map No. 1A.
3. Location of Existing Wells - Refer to Map No. 1A.
4. Location of Existing and/or Proposed Facilities if Well is Productive -
  - a. On the Well Pad - Refer to Plat No. 1, anticipated production facilities plat.
  - b. Off the Well Pad - Anticipated facilities off the well pad will be applied for as required.
5. Location and Type of Water Supply - Water will be hauled by truck for the proposed project and will be obtained from Bull Pasture Well located SW Section 17, T-26-N, R-4-W, New Mexico.
6. Source of Construction Materials - If construction materials are required for the proposed project, such materials will be obtained from a commercial quarry.
7. Methods of Handling Waste Materials - All garbage and trash materials will be removed from the site for proper disposal. A portable toilet will be provided for human waste and serviced in a proper manner. If liquids are left in the reserve pit after completion of the project, the pit will be fenced until the liquids have had adequate time to dry. The location clean-up will not take place until such time as the reserve pit can be properly covered over to prevent run-off from carrying waste materials into the watershed. All reserve pits will be lined with 12 mil bio-degradable plastic liner. All earthen pits will be so constructed as to prevent leakage from occurring; no earthen pit will be located on natural drainage. Generation of hazardous waste is not anticipated. Federal regulations will be adhered to regarding handling and disposal of such waste if so generated.
8. Ancillary Facilities - None anticipated.
9. Wellsite Layout - Refer to the location diagram and to the wellsite cut and fill diagram (Figure No. 4). The blow pit will be constructed with a 2'/160' grade to allow positive drainage to the reserve pit and prevent standing liquids in the blow pit.

10. Plans for Restoration of the Surface - After completion of the proposed project, the location will be cleaned and leveled. The location will be left in such a condition that will enable reseeding operations to be carried out. Seed mixture as designated by the responsible government agency will be used. The reseeding operations will be performed during the time period set forth by the responsible government agency. The permanent location facilities will be painted as designated by the responsible government agency.
11. Surface Ownership - Jicarilla Apache Tribe.
12. Other Information - Environmental stipulations as outlined by the responsible government agency will be adhered to. Refer to the archaeological report for a description of the topography, flora, fauna, soil characteristics, dwellings, historical and cultural sites.
13. Operator's Representative and Certification - Meridian Oil Regional Drilling Manager, Post Office Box 4289, Farmington, NM 87499, telephone (505) 326-9700. I hereby certify that I, or persons under my direct supervision, have inspected the proposed drill site and access route; that I am familiar with the conditions which presently exist; that the statements made in this plan, are to the best of my knowledge, true and correct; and that the work associated with the operations proposed herein will be performed by Meridian Oil Inc. and its contractors and subcontractors in conformity with this plan and the terms and conditions under which it is approved.

Donald C. Lelander  
Regional Drilling Engineer

7/29/93  
Date

JWC:pb



**MERIDIAN OIL INC  
JICARILLA 98 #10A**

**T 26 N, R 03 W**

**341' Access**

**SE Corner Section 17**

**N 28° 00' 48" W 2298.19'**

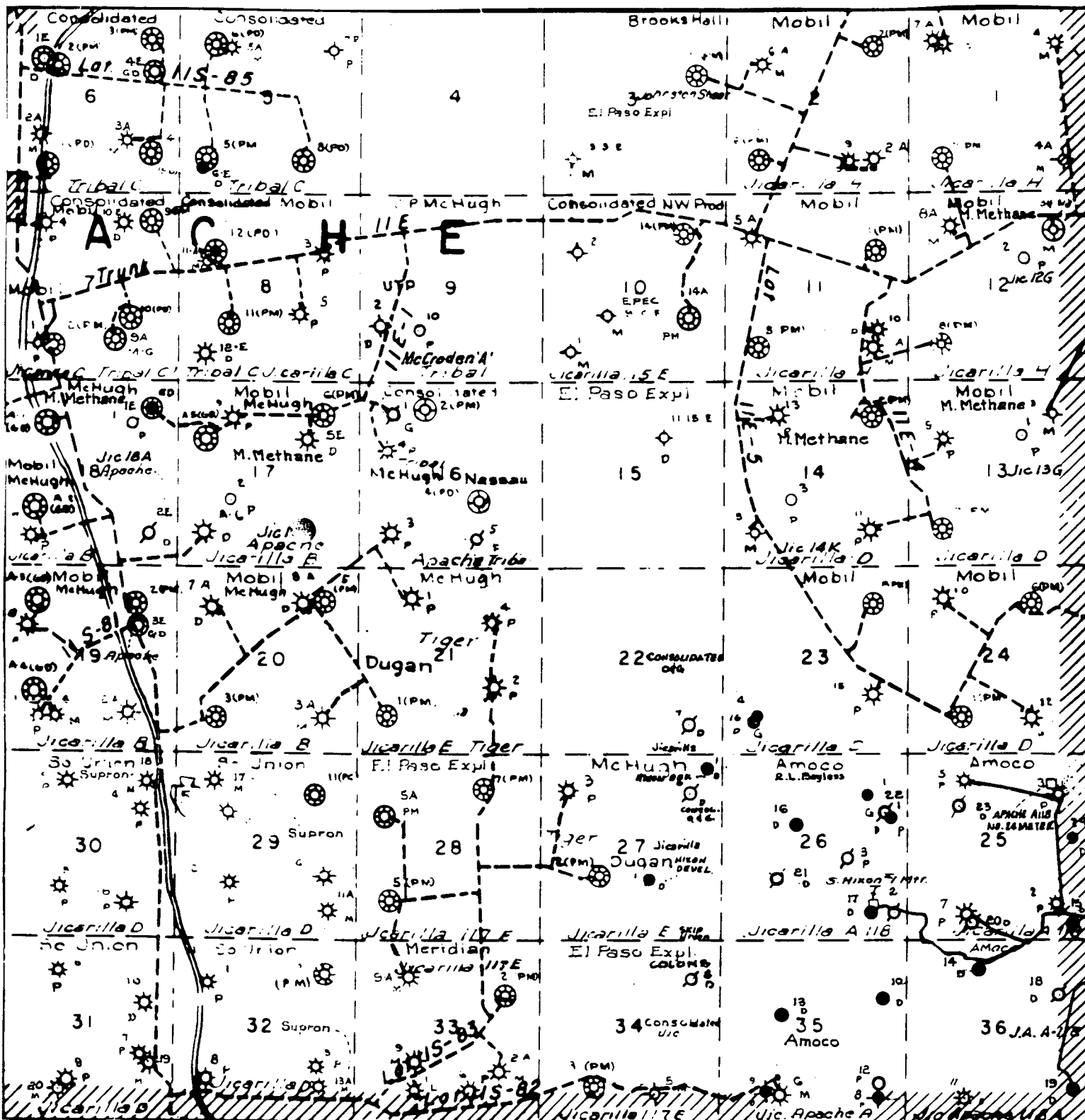
**0+ 00 Existing road & new access**

**S 78° 59' 41" W 176.0'**

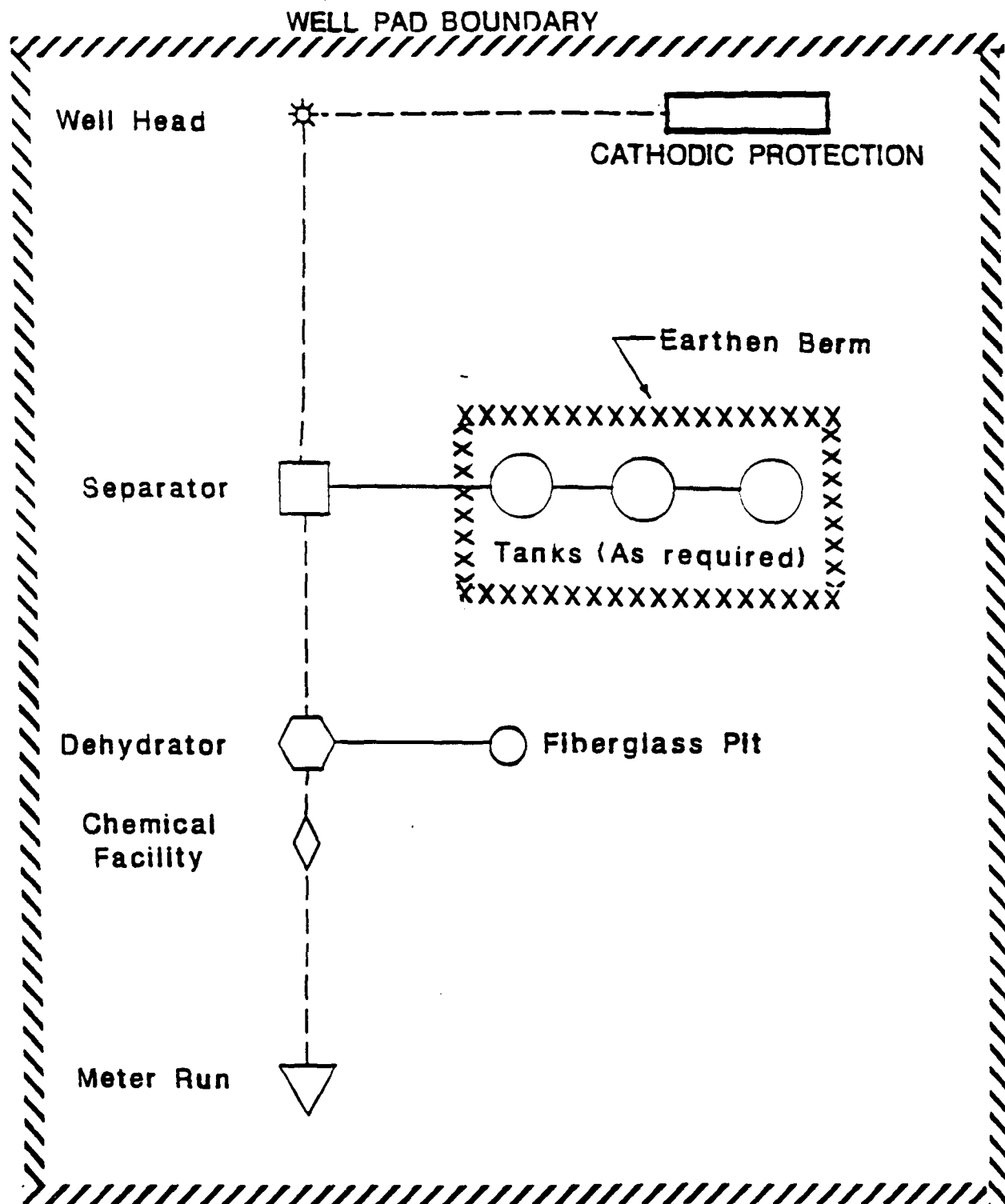
**1+ 76.00 PI-1**

**S 86° 47' 32" W 165.2'**

**3+ 41.20 Edge of pad,  
all located on tribal lands.**



MERIDIAN OIL INC.  
 Pipeline Map  
 T-26-N, R-03-W  
 Rio Arriba County, New Mexico  
 Jicarilla 98 #10A  
 Map #1A



**PLAT #1**

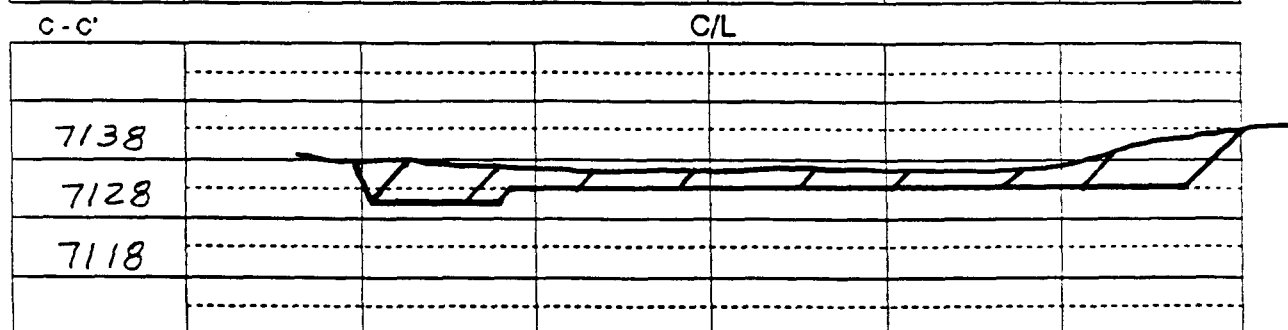
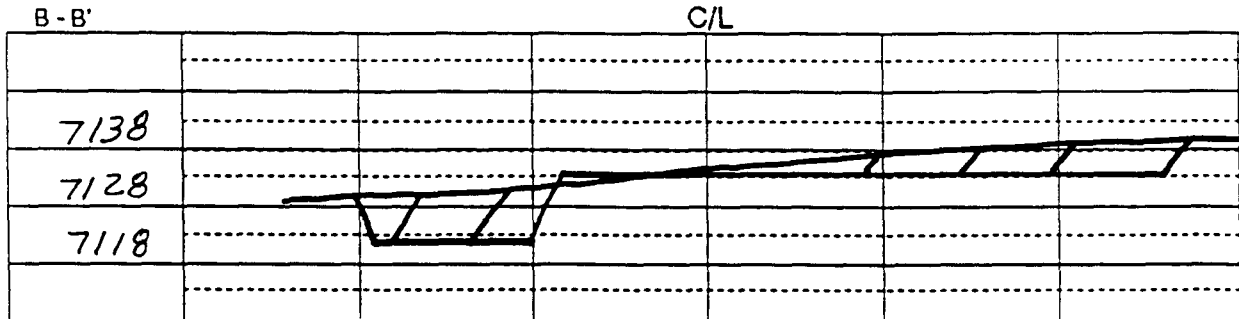
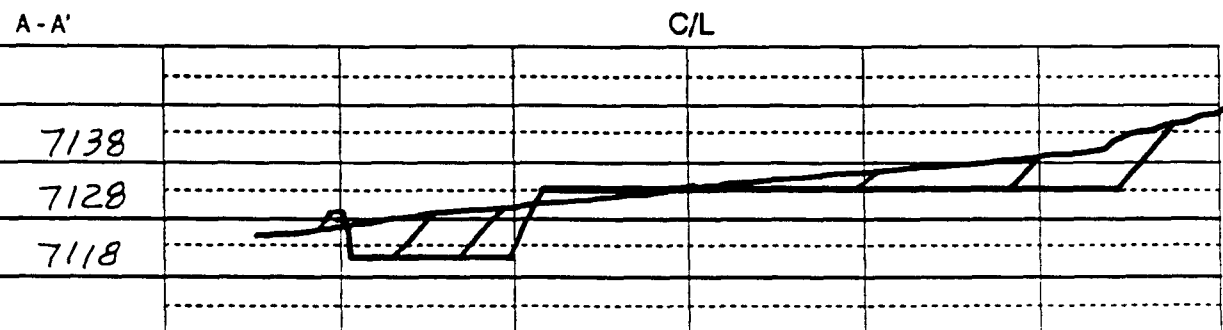
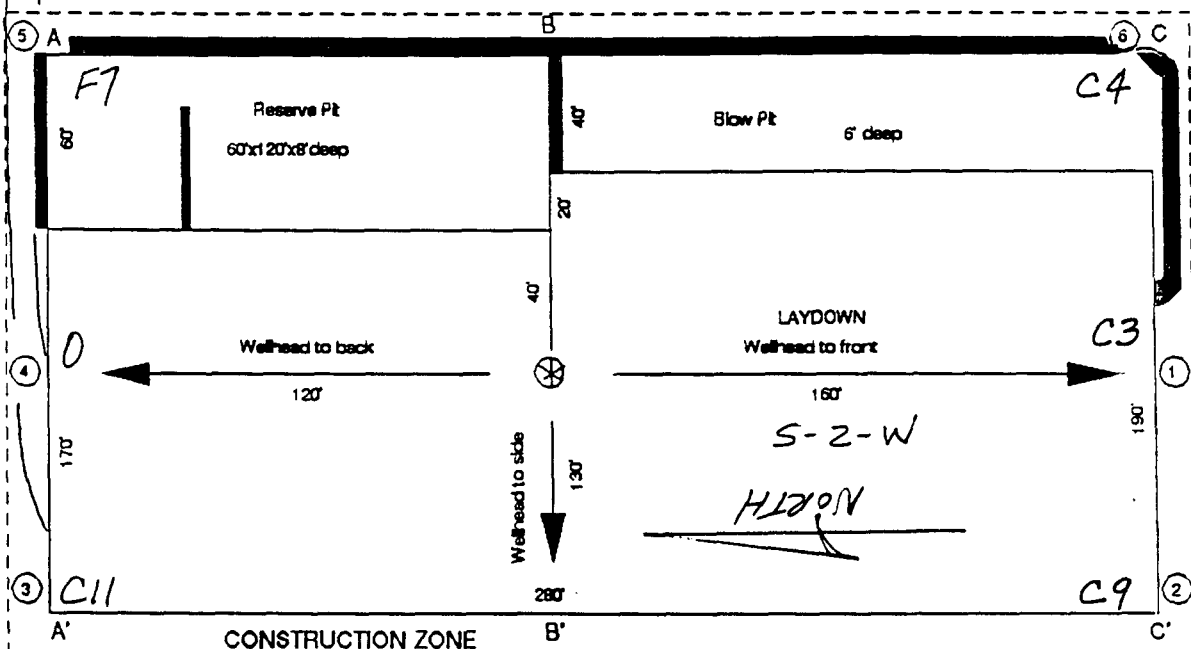
**MERIDIAN OIL**  
ANTICIPATED  
PRODUCTION FACILITIES  
FOR A  
MESA VERDE WELL

ACCESS 341' 0-4%

# MERIDIAN OIL

## Plat 5

Name: JICARILLA 98 #10A  
 Footage: 1865' FSL 1360' FEL  
 Sec 17 T- 26 N.R- 3 W NMPM  
 Co. Rio Arriba St. N.M.  
 Elevation: 7128' Date: 6-28-93



Schedule to Applicants  
District Office  
State Lease - 4 copies  
Fee Lease - 3 copies

State of New Mexico  
Energy, Minerals and Natural Resources Department

Form C-182  
Revised 1-1-89

OIL CONSERVATION DIVISION

P.O. Box 2088  
Santa Fe, New Mexico 87504-2088

DISTRICT I  
P.O. Box 1980, Hobbs, NM 88240

DISTRICT II  
P.O. Drawer 00, Artesia, NM 88210

DISTRICT III  
1000 Rio Brazos Rd., Aztec, NM 87410

WELL LOCATION AND ACREAGE DEDICATION PLAT

All Distances must be from the outer boundaries of the section

Operator Meridian Oil Inc.		Lease Jicarilla 98		Well No. 10A	
Unit Letter J	Section 17	Township 26 North	Range 3 West	County Rio Arriba	
Actual Footage Location of Well: 1865 feet from the South line and 1360 feet from the East line					
Ground level Elev. 7128'	Producing Formation Pictured Cliffs/Mesa Verde			Pool Tapacitos/Blanco	Dedicated Acreage: 160/320 Acres

- Outline the acreage dedicated to the subject well by colored pencil or ink on the plat below.
- If more than one lease is dedicated to the well, outline each and identify the ownership thereof (both as to working interest and royalty).
- If more than one lease of different ownership is dedicated to the well, have the interest of all owners been consolidated by communitization, unitization, force-pooling, etc.?  
☐ Yes ☐ No If answer is "yes" type of consolidation \_\_\_\_\_  
If answer is "no" list the owners and tract descriptions which have actually been consolidated. (Use reverse side of this form if necessary).  
No allowable will be assigned to the well until all interests have been consolidated (by communitization, unitization, force-pooling, or otherwise) or until a non-standard unit, eliminating such interest, has been approved by the Division.

5280.0

5280.0

17

JIC. CONTRACT #98

1360'

1865'

5280.0

OPERATOR CERTIFICATION

I hereby certify that the information contained herein is true and complete to the best of my knowledge and belief.

*Peggy Bradfield*  
Signature

Peggy Bradfield

Printed Name

Regulatory Representative

Position

Meridian Oil Inc.

Company

7-28-93

Date

SURVEYOR CERTIFICATION

I hereby certify that the well location shown on this plat was plotted from field notes, actual surveys made by me or under my supervision, and that the same is true and correct to the best of my knowledge and belief.

6-28-93

Date Surveyed

*C. EDWARDS*  
Name

Signature of State Professional Surveyor

8857

*C. EDWARDS*  
Signature

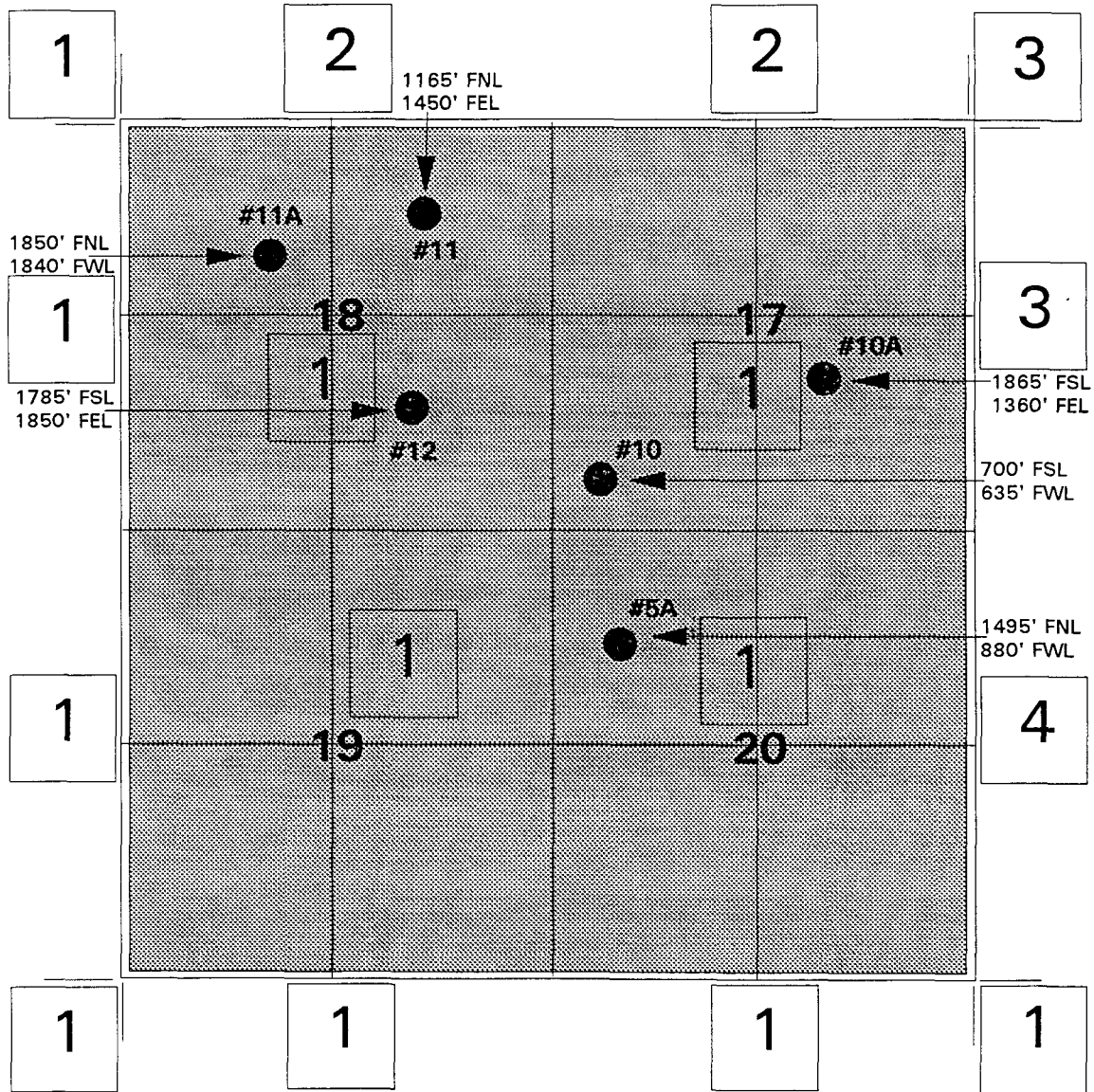
Signature No.

6857



# MERIDIAN OIL INC.

## OFFSET OPERATOR/OWNER PLAT Pictured Cliffs/Mesaverde Commingle Township 26 North, Range 3 West Rio Arriba County, New Mexico



See Attached List

**Pictured Cliffs/Mesaverde Commingle  
Township 26 North, Range 3 West  
Offset Operators**

- 1. Meridian Oil Inc.  
P.O. Box 4289  
Farmington, NM 87499-4289**
- 2. Consolidated Oil & Gas Corp.  
419 17th Street, Suite 400  
Denver, CO 80202-4410**
- 3. Jerome P. McHugh  
650 S. Cherry Street, Suite 1225  
Denver, CO 80222**
- 4. Jerome P. McHugh  
650 S. Cherry Street, Suite 1225  
Denver, CO 80222**

**Dugan Production Corp.  
P.O. Box 420  
Farmington, NM 87499-0402**

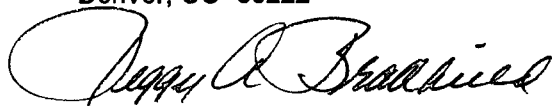
# MERIDIAN OIL

Re: Meridian Oil Inc. Jicarilla 98 #10A  
1865'FSL, 1360'FEL Section 17, T-26-N, R-3-W  
Rio Arriba County, New Mexico

I hereby certify that the following offset operators/owners have been mailed notification of our application for non-standard location to drill the referenced well.

Consolidated Oil & Gas Corp.  
419 17th Street, Suite 400  
Denver, CO 80202-4410

Jerome P. McHugh  
650 South Cherry Street, Suite 1225  
Denver, CO 80222



Peggy A. Bradfield  
San Juan County  
State of New Mexico

My commission expires August 17, 1996

SCHN  
NE  
7.5 M

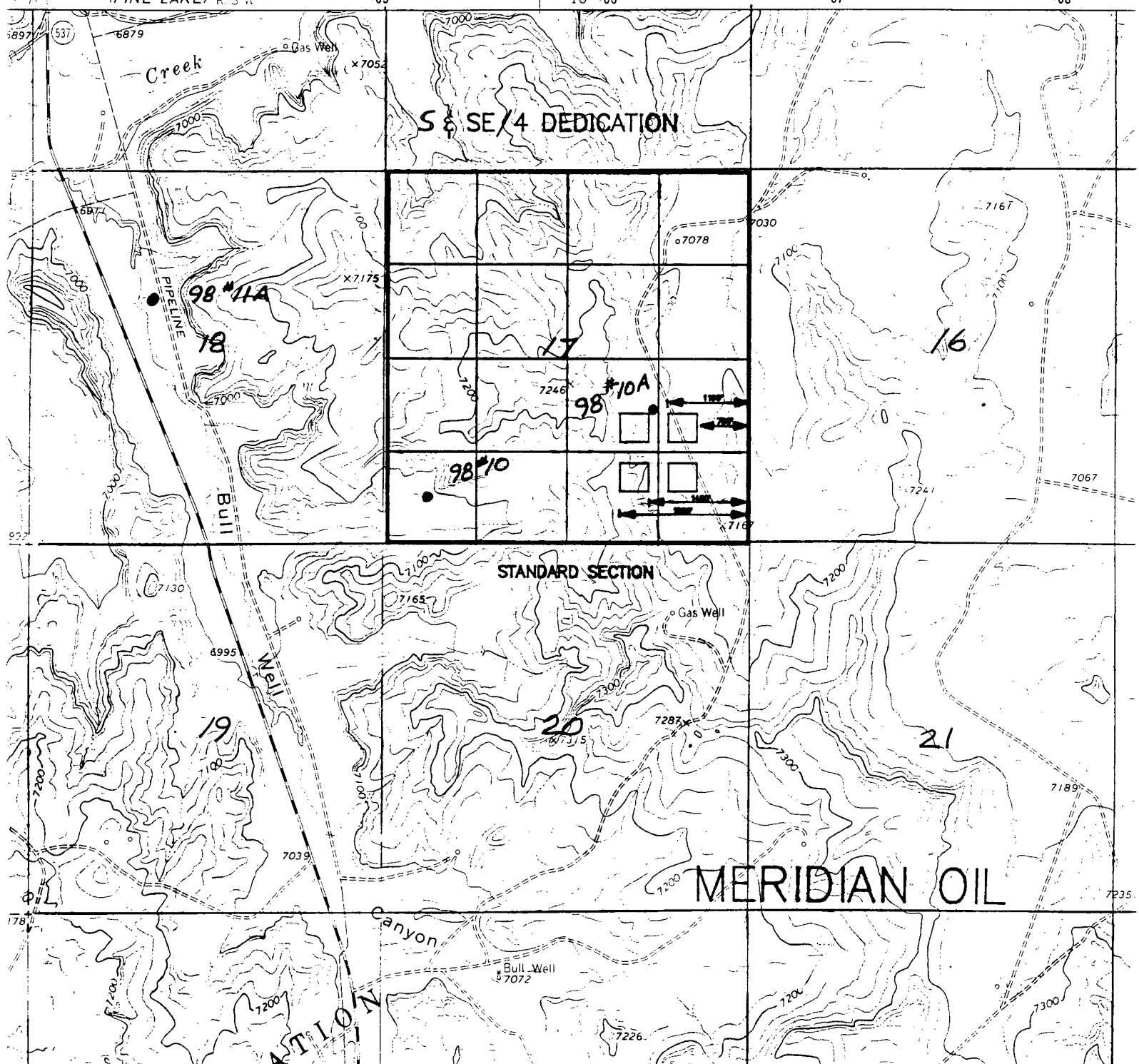
4557 11 SW  
(PINE LAKE) R. 3 W

305

10' 306

307

308



4557 11 SW  
(PINE LAKE) R. 3 W.

305

10' 306

307

Creek

6879

Gas Well

x7052

98\*11A

18

x7175

17

98\*10A

98\*10

o7078

7030

x7167

6995

19

Well

20

7287

7039

Canyon

Bull Well  
x7072

7226

SECTION 10 N

# Consolidated Oil & Gas, Inc.

NEW MEXICO CONSERVATION DIVISION  
RECEIVED

1993 AUG 11 AM 8 45

August 9, 1993

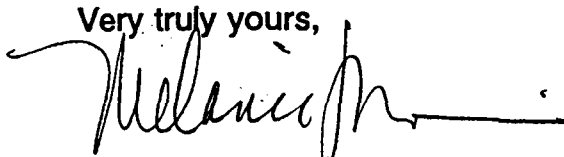
Mr. William LeMay  
New Mexico Oil Conservation Division  
P.O. Box 2088  
Santa Fe, NM 87501

Re: Meridian Oil Inc. Application  
Sections 17 & 18-T26N-R3W  
Rio Arriba County, New Mexico

Dear Mr. LeMay:

Enclosed are copies of Meridian Oil's three letters dated August 3, 1993, regarding Meridian's Application for non-standard locations. The letters have been signed by Consolidated Oil & Gas, Inc. indicating its waiver of any objection to the location.

Very truly yours,



Melanie Morris, CPL  
Senior Landman

cc: Ms. Peggy Bradfield  
Regulatory/Compliance Rep.  
Meridian Oil Inc.  
P.O. Box 4289  
Farmington, NM 87499-4289

Enclosures

MM:cp\03

**MERIDIAN OIL**

OIL CONSERVATION DIVISION  
RECEIVED

'93 AUG 11 AM 8 45

August 3, 1993

Sent Federal Express

Mr. William LeMay  
New Mexico Oil Conservation Division  
Post Office Box 2088  
Santa Fe, New Mexico 87501

Re: Meridian Oil Inc. Jicarilla 98 #10A  
1865'FSL, 1360'FEL Section 17, T-26-N, R-3-W  
Rio Arriba County, New Mexico

Dear Mr. LeMay:

Meridian Oil Inc. is applying for administrative approval of a non-standard location for the above location in both the Mesa Verde and Pictured Cliffs formations. This application for the referenced location is due to terrain as shown on the topographic map, and at the request of the Jicarilla Apache Tribe.

This well is planned as a Mesa Verde/Pictured Cliffs commingle and application is being made to the New Mexico Oil Conservation Division for the commingling.

The following attachments are for your review:

1. Application for Permit to Drill.
2. Completed C-102 at referenced location.
3. Offset operators/owners plat and affidavit of notification..
4. 7.5 minute topographic map showing the orthodox windows for the south half dedication for the Mesa Verde and southeast quarter dedication for the Pictured Cliffs and enlargement of the map to define topographic features.
5. If the well were directionally drilled to a standard bottom hole location, the economics would be severely burdened due to the incremental directional drilling costs of \$200,000.

A copy of this application is being submitted to all offset owners/ operators by certified mail with a request that they furnish you with a Waiver of Objection, and return one copy to this office.

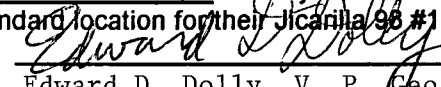
Sincerely,



Peggy Bradfield  
Regulatory/Compliance Representative  
encs.

**WAIVER**

Consolidated Oil & Gas, Inc. hereby waives objection to Meridian Oil Inc.'s application for a non-standard location for their Jicarilla 98 #10A as proposed above.

By:  Date: August 6, 1993

Edward D. Dolly, V. P. Geology

xc: Consolidated Oil & Gas Corp.  
Jerome P. McHugh

**MERIDIAN OIL**

August 3, 1993

Sent Federal Express

Mr. William LeMay  
New Mexico Oil Conservation Division  
Post Office Box 2088  
Santa Fe, New Mexico 87501

Re: Meridian Oil Inc. Jicarilla 98 #10A  
1865'FSL, 1360'FEL Section 17, T-28-N, R-3-W  
Rio Arriba County, New Mexico

Dear Mr. LeMay:

Meridian Oil Inc. is applying for administrative approval of a non-standard location for the above location in both the Mesa Verde and Pictured Cliffs formations. This application for the referenced location is due to terrain as shown on the topographic map, and at the request of the Jicarilla Apache Tribe.

This well is planned as a Mesa Verde/Pictured Cliffs commingle and application is being made to the New Mexico Oil Conservation Division for the commingling.

The following attachments are for your review:

1. Application for Permit to Drill.
2. Completed C-102 at referenced location.
3. Offset operators/owners plat and affidavit of notification..
4. 7.5 minute topographic map showing the orthodox windows for the south half dedication for the Mesa Verde and southeast quarter dedication for the Pictured Cliffs and enlargement of the map to define topographic features.
5. If the well were directionally drilled to a standard bottom hole location, the economics would be severely burdened due to the incremental directional drilling costs of \$200,000.

A copy of this application is being submitted to all offset owners/ operators by certified mail with a request that they furnish you with a Waiver of Objection, and return one copy to this office.

Sincerely,

  
Peggy Bradfield  
Regulatory/Compliance Representative  
encs.

**WAIVER**

Jerome P. McHugh hereby waives objection to Meridian Oil Inc.'s application for a non-standard location for their Jicarilla 98 #10A as proposed above.

By:  Date: August 25, 1993

xc: Consolidated Oil & Gas Corp.  
Jerome P. McHugh

Meridian Oil Inc., 3535 East 30th St., P.O. Box 4289, Farmington, New Mexico 87499-4289, Telephone 505-326-9700





STATE OF NEW MEXICO

ENERGY, MINERALS and NATURAL RESOURCES DEPARTMENT

RECEIVED

OIL CONSERVATION DIVISION

AZTEC DISTRICT OFFICE

'93 AUG 19 AM 8 53

1000 RIO BRAZOS ROAD  
AZTEC, NEW MEXICO 87410  
(505) 334-6178

Date: 8-16-93

*att. Mike Stogner*

Oil Conservation Division  
P.O. Box 2088  
Santa Fe, NM 87504-2088

RE: Proposed MC \_\_\_\_\_  
Proposed NSL X \_\_\_\_\_  
Proposed WFX \_\_\_\_\_  
Proposed NSP \_\_\_\_\_

Proposed DHC \_\_\_\_\_  
Proposed SWD \_\_\_\_\_  
Proposed PMX \_\_\_\_\_  
Proposed DD \_\_\_\_\_

Gentlemen:

I have examined the application received on 8-12-93  
for the MERIDIAN OIL INC. TICABALLA 98 #10A  
OPERATOR LEASE & WELL NO.

J-17-26N-3W and my recommendations are as follows:  
UL-S-T-R

*Approved*

Yours truly,

*Eric Bush*