

1R - 388

---

# Annual GW Mon. REPORTS

DATE:

2007



2007  
ANNUAL MONITORING REPORT

RECEIVED  
2008 APR 1 PM 2 06

**MONUMENT BARBER 10-INCH SOUR**

SW ¼ SW ¼ SECTION 32, TOWNSHIP 19 SOUTH, RANGE 37 EAST  
LEA COUNTY, NEW MEXICO  
PLAINS EMS NUMBER: 2000-10655  
NMOCD Reference 1R-0378  
1R-388

Prepared For:

**PLAINS MARKETING, L.P.**  
333 CLAY STREET, SUITE 1600  
HOUSTON, TEXAS 77002




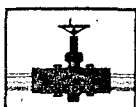
Prepared By:

**NOVA Safety and Environmental**  
2057 Commerce Street  
Midland, Texas 79703

**March 2008**

  
Curt D. Stanley  
Project Manager

  
Todd K. Choban, P.G.  
Vice President Technical Services



RECEIVED

March 28, 2008

2008 APR 1 PM 2 07

Mr. Edward Hansen  
New Mexico Oil Conservation Division  
Environmental Bureau  
1220 South St. Francis Drive  
Santa Fe, New Mexico 87505

Re: Plains All American – Annual Monitoring Reports  
25 Sites in Lea County, New Mexico

Dear Mr. Hansen:

Plains All American is an operator of crude oil pipelines and terminal facilities in the state of New Mexico. Plains All American actively monitors certain historical release sites exhibiting groundwater impacts, consistent with assessments and work plans developed in consultation with the New Mexico Oil Conservation Division (NMOCD). In accordance with the rules and regulations of the NMOCD, Plains All American hereby submits our Annual Monitoring reports for the following sites:

TNM 97-17	Section 21, Township 20 South, Range 37 East, Lea County
TNM 97-18	Section 28, Township 20 South, Range 37 East, Lea County
TNM 98-05A	Section 26, Township 21 South, Range 37 East, Lea County
TNM 98-05B	Section 26, Township 21 South, Range 37 East, Lea County
TNM 97-04	Section 11, Township 16 South, Range 35 East, Lea County
Texaco Skelly "F"	Section 21, Township 20 South, Range 37 East, Lea County
Darr Angell #2	Section 14, Township 15 South, Range 37 East, Lea County
LF-59	Section 32, Township 19 South, Range 37 East, Lea County
SPS-11	Section 18, Township 18 South, Range 36 East, Lea County
Monument #10	Section 32, Township 19 South, Range 37 East, Lea County
Monument #17	Section 29, Township 19 South, Range 37 East, Lea County
Monument #18	Section 7, Township 20 South, Range 37 East, Lea County
Lea Station to Monument 6"	Section 5, Township 20 South, Range 37 East, Lea County
34 Junction South Station	Section 2, Township 17 South, Range 36 East, Lea County
Bob Durham	Section 32, Township 19 South, Range 37 East, Lea County
Darr Angell #1	Section 11, Township 15 South, Range 37 East, Lea County
Darr Angell #4	Sections 2 and 11, Township 15 South, Range 37 East, Lea County
HDO 90-23	Section 6, Township 20 South, Range 37 East, Lea County
Junction 34 to Lea	Section 21, Township 20 South, Range 37 East, Lea County
Monument #2	Section 6, Township 20 South, Range 37 East, Lea County
Monument Barber 10" Sour	Section 32, Township 19 South, Range 37 East, Lea County
Monument #11	Section 30, Township 19 South, Range 37 East, Lea County
Red Byrd #1	Section 1, Township 20 South, Range 36 East, Lea County
South Monument Gathering	Section 5, Township 20 South, Range 37 East, Lea County
Denton Station	Section 14, Township 15 South, Range 37 East, Lea County

order to verify the accuracy and completeness of these documents. It is based upon these inquiries and reviews that Plains All American submits the enclosed Annual Monitoring Reports for the above facilities.

If you have any questions or require further information, please contact me at (505) 441-0965.

Sincerely,

A handwritten signature in cursive script that reads "Camille Reynolds". The signature is written in dark ink and is positioned above the printed name and title.

Camille Reynolds  
Remediation Coordinator  
Plains All American

CC: Larry Johnson, NMOCD, Hobbs, NM

Enclosures

## TABLE OF CONTENTS

INTRODUCTION .....	1
SITE DESCRIPTION AND BACKGROUND INFORMATION.....	1
RECENT FIELD ACTIVITIES .....	1
LABORATORY RESULTS .....	2
SUMMARY .....	3
ANTICIPATED ACTIONS .....	4
LIMITATIONS .....	4
DISTRIBUTION.....	6

### FIGURES

Figure 1 – Site Location Map

Figure 2A – Inferred Groundwater Gradient Map – February 19, 2007

2B – Inferred Groundwater Gradient Map – May 7, 2007

2C – Inferred Groundwater Gradient Map – August 8, 2007

2D – Inferred Groundwater Gradient Map – November 16, 2007

Figure 3A – Groundwater Concentration and Inferred PSH Extent Map – February 19, 2007

3B – Groundwater Concentration and Inferred PSH Extent Map – May 7, 2007

3C – Groundwater Concentration and Inferred PSH Extent Map – August 8, 2007

3D – Groundwater Concentrations and Inferred PSH Extent Map – November 16, 2007

### TABLES

Table 1 – 2007 Groundwater Elevation Data

Table 2 – 2007 Concentrations of Benzene and BTEX in Groundwater

### APPENDICES

Appendix A – Release Notification and Corrective Action (Form C-141)

### ENCLOSED ON DATA DISK

2007 Annual Monitoring Report

2007 Tables 1 and 2 - Groundwater Elevation and BTEX Concentration Data

2007 Figures 1, 2A-2D, and 3A-3D

Electronic Copies of Laboratory Reports

Historic Table 1 and 2 - Groundwater Elevation and BTEX Concentration Tables

## **INTRODUCTION**

On behalf of Plains Marketing, L.P. (Plains), NOVA Safety and Environmental (NOVA) is pleased to submit this Annual Monitoring Report in compliance with the New Mexico Oil Conservation Division (NMOCD) letter of May 1998, requiring submittal of an Annual Monitoring Report by April 1 of each year. Beginning on May 29, 2004, project management responsibilities were assumed by NOVA. The Monument Barber 10-Inch Sour site (the site), which was formerly the responsibility by Enron Oil Trading and Transportation (EOTT), is now the responsibility of Plains. This report is intended to be viewed as a complete document with text, figures, tables, and appendices. The report presents the results of the quarterly groundwater monitoring events conducted in calendar year 2007 only. However, historic data tables as well as 2007 laboratory analytical reports are provided on the enclosed data disk. For reference, the Site Location Map is provided as Figure 1.

Groundwater monitoring was conducted during each quarter of 2007 to assess the levels and extent of dissolved phase constituents and Phase Separated Hydrocarbon (PSH). Each groundwater monitoring event consisted of measuring static water levels in monitor wells, checking for the presence of PSH on the water column, and purging and sampling of each well exhibiting sufficient recharge. Monitor wells containing a thickness of PSH greater than 0.01 feet were not sampled.

## **SITE DESCRIPTION AND BACKGROUND INFORMATION**

The legal description of the site is SW/4 of the SW/4, Section 32, Township 19 South, Range 37 East, Lea County, New Mexico. The Monument Barber 10-Inch Sour release was discovered by EOTT employees and reported on August 7, 2000. The Release Notification and Corrective Action Form (C-141) is provided as Appendix A. An estimated 1,600 barrels of crude oil were released and 1,300 barrels were recovered. The release resulted in a surface stain measuring approximately 100 feet in length by eight feet in width. The excavated soil was transported to a NMOCD approved disposal facility. Thirty four soil borings were installed by a previous consultant to characterize the horizontal and vertical crude oil impact.

Four groundwater monitor wells (MW-1 through MW-4) and two PSH recovery wells (RW-1 and RW-2) are currently on-site. An excavation measuring approximately 40 feet wide by 70 feet long by six feet in depth remains from the initial response and site investigation activities.

As indicated on Figures 2A-2D and 3A-3D, there is an off-site third party (Equilon) release located approximately 150 feet upgradient of the site. The historical presence of product in this area is documented by gauging data from monitor well MW-3. Historic data tables are provided on the enclosed data disk. The NMOCD has been notified of this off-site, up-gradient source area. The NMOCD has stated the Equilon release site, which is up-gradient of the Monument Barber 10-Inch Sour site, is considered a potential contributing source area for the groundwater impact present at the Monument Barber 10-Inch Sour site.

## **RECENT FIELD ACTIVITIES**

No measurable PSH was reported in any of the site monitor or recovery wells during the 2007 reporting period. Hydrocarbon sheen was reported in recovery well RW-2 during the 1<sup>st</sup> quarter and monitor well MW-3 during the 1<sup>st</sup> quarter of 2007. Evidence suggests and is supported by the NMOCD, that the sheen reported in monitor well MW-3 may be the result of a previous (date

unknown) Equilon Pipeline release. The Equilon release is depicted in Figures 2A-2D and 3A-3D.

The landowner's agent would not allow Plains or its contractors, access to the site during the 4<sup>th</sup> quarter 2006. Plains representatives were given permission to conduct 4<sup>th</sup> quarter 2006 sampling on January 4, 2007; the results of this sampling event were included in the 2006 Annual Monitoring Report.

Quarterly sampling events for the reporting period were performed according to the following sampling schedule, which was approved by the NMOCD on correspondence dated April 28, 2004.

NMOCD Approved Sampling Schedule	
MW-1	Quarterly
MW-2	Quarterly
MW-3	Quarterly
MW-4	Quarterly
RW-1	Quarterly
RW-2	Quarterly

The site monitor wells were gauged and sampled on February 19, May 7, August 8, and November 16, 2007. During each sampling event, sampled monitor wells were purged a minimum of three well volumes of water or until the wells failed to produce water using a PVC bailer or electric Grundfos pump. Groundwater was allowed to recharge and samples were obtained using disposable Teflon samplers. Water samples were collected in clean, glass containers provided by the laboratory and placed on ice in the field. Purge water was collected in a polystyrene tank and disposed of at a licensed disposal facility.

Locations of the monitor wells and the inferred groundwater gradient, which were constructed from measurements collected during the four quarterly monitoring events, are depicted on Figures 2A through 2D, the Inferred Groundwater Gradient Maps. Groundwater elevation data for 2007 is provided as Table 1. Historic groundwater elevation data beginning at project inception is provided on the enclosed data disk.

The most recent Groundwater Gradient Map, Figure 2D, indicates a general gradient of approximately 0.0006 feet/foot to the southeast as measured between groundwater monitor well MW-3 and recovery well RW-2. This is consistent with data presented on Figures 2A through 2C from earlier in the year. The corrected groundwater elevation has ranged between 3,536.40 and 3,537.16 feet above mean sea level, in monitor well MW-2 on November 16, 2007 and recovery well RW-1 on May 7, 2007, respectively.

## LABORATORY RESULTS

No measurable PSH was reported in any of the site monitor or recovery wells during the 2007 reporting period. Hydrocarbon sheen was reported in recovery well RW-2 during the 1<sup>st</sup> quarter of 2007 and monitor well MW-3 during the 1<sup>st</sup> quarter of 2007.

Groundwater samples collected during 2007 monitoring events were delivered to Trace Analysis, Inc., Lubbock, Texas for determination of Benzene, Toluene, Ethylbenzene and Xylene (BTEX) constituent concentrations by EPA Method SW846-8021b. A listing of BTEX constituent concentrations for 2007 is summarized in Table 2 and copies of the 2007 laboratory reports are

provided on the enclosed disk. The inferred extent of PSH and quarterly groundwater sampling results for BTEX constituent concentrations are depicted on Figures 3A through 3D.

**Monitor well MW-1** is sampled on a quarterly schedule and analytical results indicate benzene, toluene, ethylbenzene, and xylene concentrations were below laboratory method detection limits (MDL) and the NMOCD regulatory standards of 0.01 mg/L for benzene, 0.75 mg/L for toluene, 0.75 mg/L for ethylbenzene and 0.62 mg/L for xylene, during all four quarters of 2007. The analytical results indicate BTEX constituent concentrations have been below NMOCD regulatory standards for the last fourteen consecutive quarters.

**Monitor well MW-2** is sampled on a quarterly schedule and analytical results indicate benzene, toluene, ethylbenzene, and xylene concentrations were below the MDL and the NMOCD regulatory standards. The analytical results indicate BTEX constituent concentrations have been below NMOCD regulatory standards for the last thirteen consecutive quarters.

**Monitor well MW-3** is sampled on a quarterly schedule and analytical results indicate benzene, toluene and ethylbenzene concentrations were below the NMOCD regulatory standard during all four quarters of the reporting period. Xylene concentrations ranged from <0.001 mg/L during the 3<sup>rd</sup> quarter to 0.0031 mg/L during the 4<sup>th</sup> quarter of 2007. Xylene concentrations were below the NMOCD regulatory standard during all four quarters of the reporting period. The analytical results indicate BTEX constituent concentrations have been below NMOCD regulatory standards for the last nine consecutive quarters.

**Monitor well MW-4** is sampled on a quarterly schedule and analytical results indicate BTEX constituent concentrations were below the MDL and NMOCD regulatory standards during all four quarters of 2007. The analytical results indicate BTEX constituent concentrations have been below NMOCD regulatory standards for the last nineteen consecutive quarters.

**Recovery well RW-1** is sampled on a quarterly schedule and analytical results indicate BTEX constituent concentrations were below the MDL and NMOCD regulatory standards during all four quarters of 2007. The analytical results indicate BTEX constituent concentrations have been below NMOCD regulatory standards for the last thirteen consecutive quarters.

**Recovery well RW-2** is sampled on a quarterly schedule and analytical results indicate BTEX constituent concentrations were below the MDL and NMOCD regulatory standards during all four quarters of 2007. The analytical results indicate BTEX constituent concentrations have been below NMOCD regulatory standards for the last nine consecutive quarters.

Laboratory analytical results were compared to NMOCD regulatory limits based on the New Mexico groundwater standards found in section 20.6.2.3103 of the New Mexico Administrative Code.

## **SUMMARY**

This report presents the results of groundwater monitoring activities for the 2007 annual monitoring period. Four groundwater monitor wells (MW-1 through MW-4) and two recovery wells (RW-1 and RW-2) are currently on-site. The most recent Groundwater Gradient Map, Figure 2D, indicates a general gradient of approximately 0.0006 feet/foot to the southeast.



As indicated on Figures 2A-2D and 3A-3D, there was an apparent off-site third party release located approximately 150 feet upgradient of the Monument Barber 10-inch Sour leak location. The presence of PSH in the area of the Equilon Pipeline release is documented by historic gauging data from monitor well MW-3. The NMOCD has been notified of this off site, upgradient source area. The NMOCD has stated the Equilon release site is considered a potential contributing source area for the groundwater contamination present at the Monument Barber 10-Inch Sour site.

The landowner's agent would not allow Plains or its contractors, access to the site during the 4<sup>th</sup> quarter 2006. Plains representatives were given permission to conduct 4<sup>th</sup> quarter sampling on January 4, 2007, the results of this sampling event were included in this 2006 Annual Monitoring Report.

No measurable PSH was reported in any of the site monitor or recovery wells during the 2007 reporting period. Hydrocarbon sheen was reported in recovery well RW-2 during the 1<sup>st</sup> quarter and monitor well MW-3 during the 1<sup>st</sup> quarter of 2007. It is the opinion of NOVA that the light sheen present in monitor well MW-3 is attributed to the Equilon release and not the Plains release as this monitor well is up gradient of the Plains release.

A review of the laboratory analytical results indicates BTEX constituent concentrations were below the appropriate NMOCD regulatory standards in all monitor wells and recovery wells during all four quarters of the reporting period and for at least the past nine quarters.

## **ANTICIPATED ACTIONS**

Quarterly groundwater monitoring, gauging and sampling will continue. Analytical results indicate the on site monitor and recovery wells have posted a minimum of nine consecutive quarters below the NMOCD regulatory standard for BTEX constituents.

Plains submitted a *Soil Remediation Work Plan* to the NMOCD in March 2006 to address the remaining hydrocarbon impacted soil onsite and to progress this site toward an NMOCD approved closure. This Work plan was approved by the NMOCD in an email dated February 19, 2008. Plains anticipates commencing and completing the soil remediation activities outlined in the Work Plan during the 2<sup>nd</sup> quarter of 2008. A Soil Closure Request will be submitted to the NMOCD following the completion of these activities.

## **LIMITATIONS**

NOVA has prepared this Annual Monitoring Report to the best of its ability. No other warranty, expressed or implied, is made or intended.

NOVA has examined and relied upon documents referenced in the report and has relied on oral statements made by certain individuals. NOVA has not conducted an independent examination of the facts contained in referenced materials and statements. We have presumed the genuineness of the documents and that the information provided in documents or statements is true and accurate. NOVA has prepared this report, in a professional manner, using the degree of skill and care exercised by similar environmental consultants. NOVA also notes that the facts and conditions referenced in this report may change over time and the conclusions and recommendations set forth herein are applicable only to the facts and conditions as described at the time of this report.

This report has been prepared for the benefit of Plains. The information contained in this report, including all exhibits and attachments, may not be used by any other party without the express consent of NOVA and/or Plains.

## **DISTRIBUTION**

- Copy 1      Ed Hansen  
New Mexico Energy, Minerals and Natural Resources Department  
Oil Conservation Division  
1220 South St. Francis Drive  
Santa Fe, NM 87505
- Copy 2:      Larry Johnson  
New Mexico Energy, Minerals and Natural Resources Department  
Oil Conservation Division, District 1  
1625 French Drive  
Hobbs, NM 88240
- Copy 3:      Camille Reynolds  
Plains Marketing, L.P.  
3112 Highway 82  
Lovington, NM  
cjreynolds@paalp.com
- Copy 4:      Jeff Dann  
Plains Marketing, L.P.  
333 Clay Street  
Suite 1600  
Houston, TX 77002  
jpdann@paalp.com
- Copy 5:      NOVA Safety and Environmental  
2057 Commerce Street  
Midland, TX 79703  
estanley@novatraining.cc

## Figures





# NOVA Safety and Environmental

SW 1/4 SW1/4 Sec 32, T18S R37E, 32° 36' 39.4" N 103° 16' 51.0" W  
 Scale: NTS  
 Prep By: CDS  
 Checked By: TKC  
 February 16, 2006

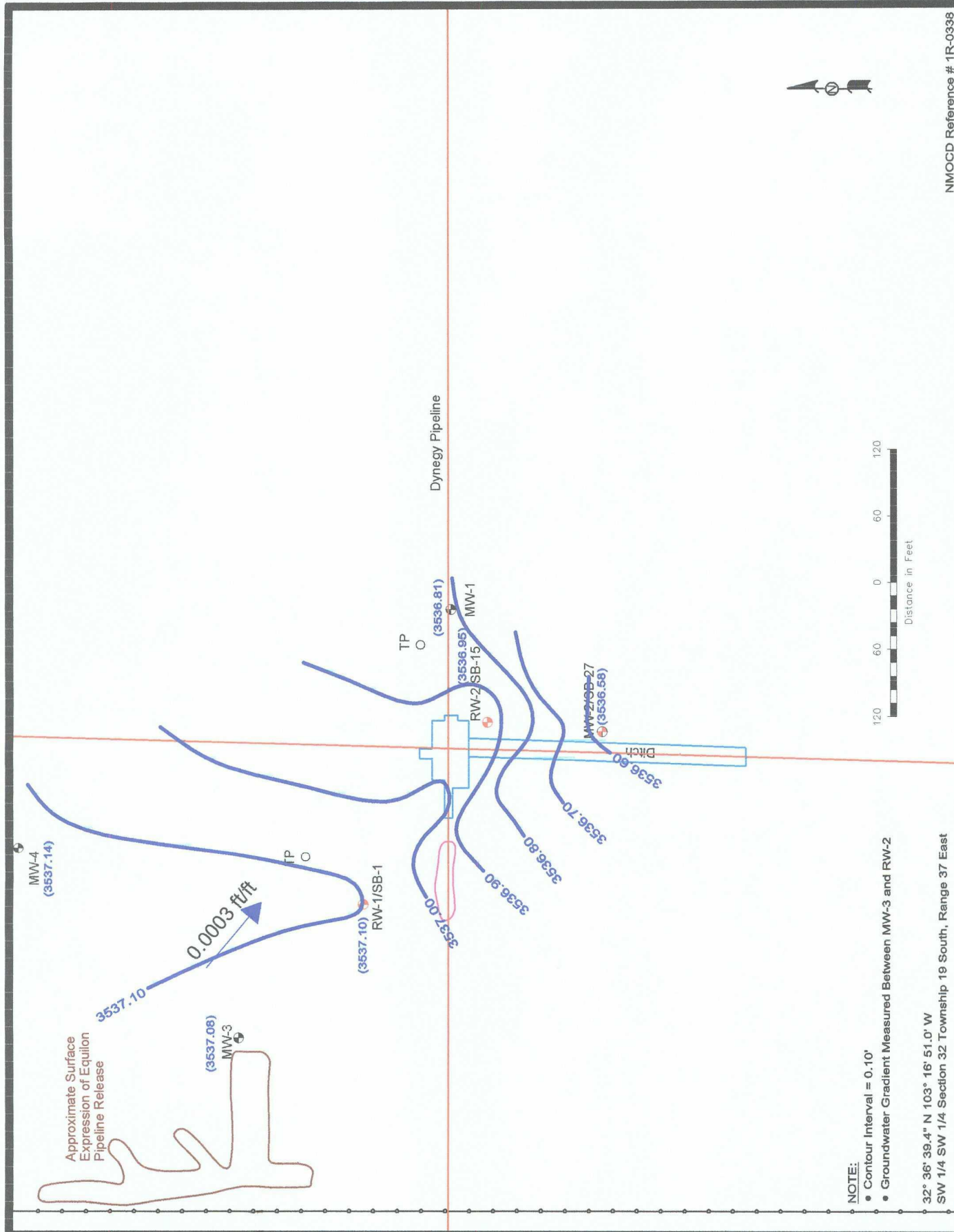


Figure 1  
 Site Location Map

Plains Marketing, L.P.  
 Monument Barber  
 10-Inch Sour  
 Monument, NM

NMOC Reference # 1R-0338





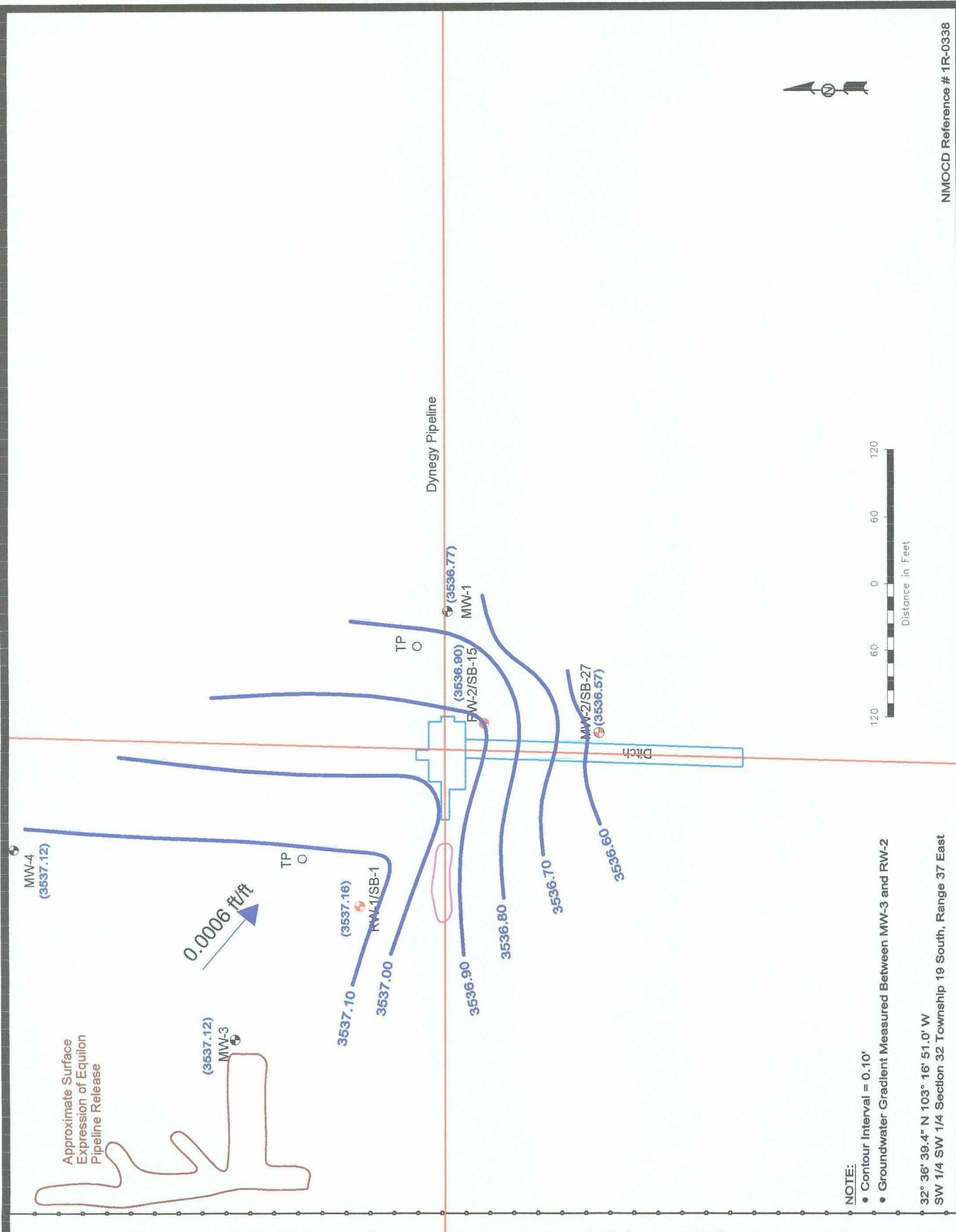
NMOCD Reference # 1R-0338

**Figure 2A**  
**Inferred Groundwater Gradient Map (02/19/07)**  
**Plains Marketing, L.P.**  
**Monument Barber**  
**10-Inch Sour**  
**Monument, NM**

**NOVA Safety and Environmental**

Scale: 1" = 120' | CAD By: DGC | Checked By: CDS  
 January 30, 2008

- LEGEND:**
- Utility Pole
  - Monitoring Well Location
  - Recovery Well Location
  - Soil Boring Location
  - Fence
  - Extent of Excavation
  - Extent of Stockpile
  - Groundwater Elevation (feet)
  - Groundwater Gradient Contour Line
  - Groundwater Gradient and Magnitude



NOTE:

- Contour Interval = 0.10'
- Groundwater Gradient Measured Between MW-3 and RW-2

32° 36' 39.4" N 103° 16' 51.0" W  
 SW 1/4 SW 1/4 Section 32 Township 19 South, Range 37 East

**LEGEND:**

- Utility Pole
- Monitoring Well Location
- Recovery Well Location
- Soil Boring Location
- Fence
- Extent of Excavation
- Extent of Stockpile
- (3537.20) Groundwater Elevation (feet)
- Groundwater Elevation Contour Line
- Groundwater Gradient and Magnitude

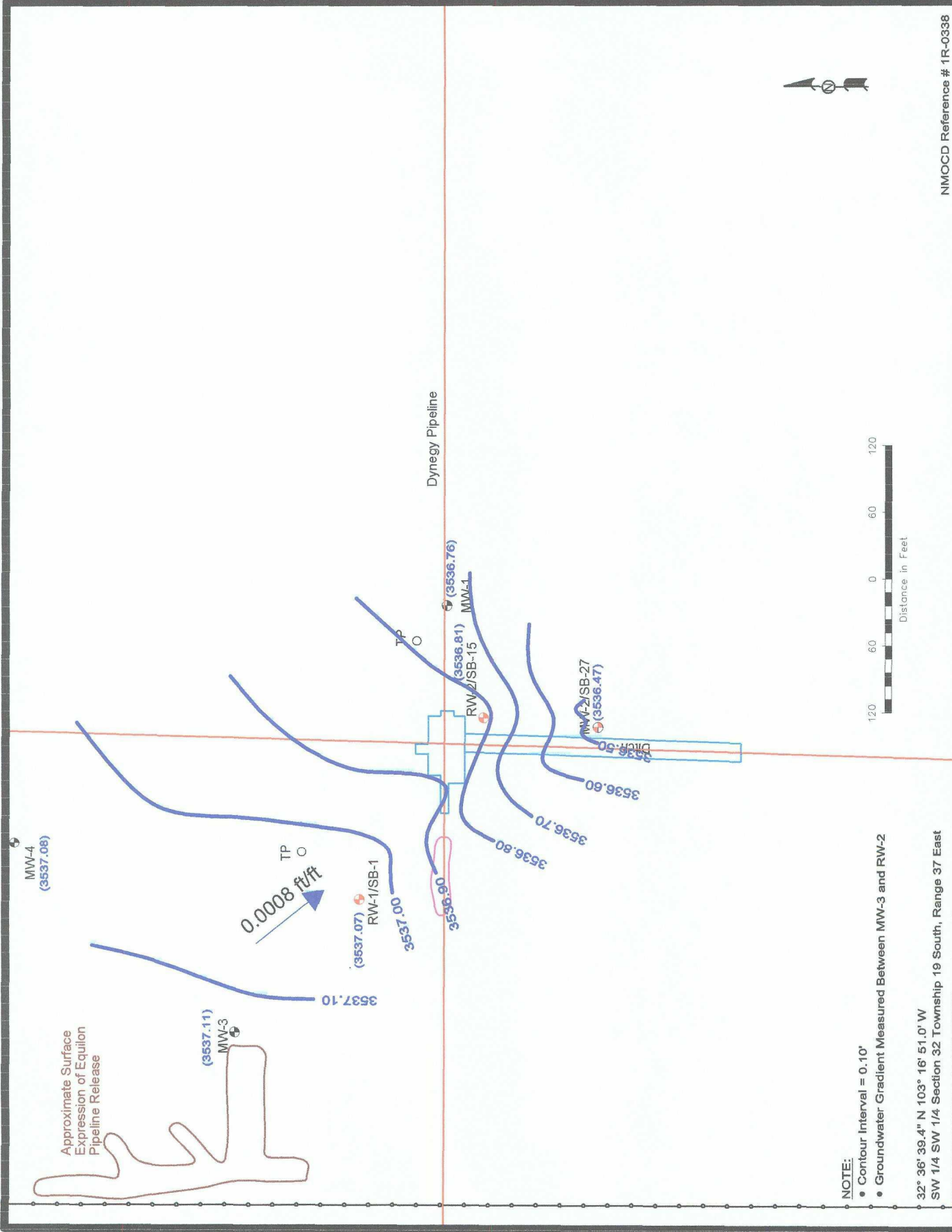
**NOVA**  
 safety and environmental

**Figure 2B**  
 Inferred Groundwater  
 Gradient Map (05/07/07)  
 Plains Marketing, L.P.  
 Monument Barber  
 10-Inch Sour  
 Monument, NM

NMOC Reference # 1R-0338

**NOVA Safety and Environmental**

Scale: 1" = 120' CAD By: DGC Checked By: CDS  
 January 31, 2008



NMOCD Reference # 1R-0338

NOVA Safety and Environmental

Scale: 1" = 120' CAD By: DGC Checked By: CDS  
January 30, 2008

Figure 2C  
Inferred Groundwater  
Gradient Map (08/08/07)  
Plains Marketing, L.P.  
Monument Barber  
10-Inch Sour  
Monument, NM



- NOTE:**
- Contour Interval = 0.10'
  - Groundwater Gradient Measured Between MW-3 and RW-2
- 32° 36' 39.4" N 103° 16' 51.0" W  
SW 1/4 SW 1/4 Section 32 Township 19 South, Range 37 East

- LEGEND:**
- Utility Pole
  - Monitoring Well Location
  - Recovery Well Location
  - Soil Boring Location
  - Force
  - Extent of Excavation
  - Extent of Stockpile
  - Groundwater Elevation (feet)
  - Groundwater Elevation Contour Line
  - Groundwater Gradient and Magnitude





Figure 2D  
Inferred Groundwater  
Gradient Map (11/16/07)  
Plains Marketing, L.P.  
Monument Barber  
10-Inch Sour  
Monument, NM



NOVA  
safety and environmental

NOVA Safety and Environmental

Scale: 1" = 120'	CAD By: DGC	Checked By: CDS
January 25, 2008		

- Contour Interval = 0.10'

- Groundwater Gradient Measured Between MW-3 and RW-2

32° 36' 39.4" N 103° 16' 51.0" W

SW 1/4 SW 1/4 Section 32 Township 19 South, Range 37 East

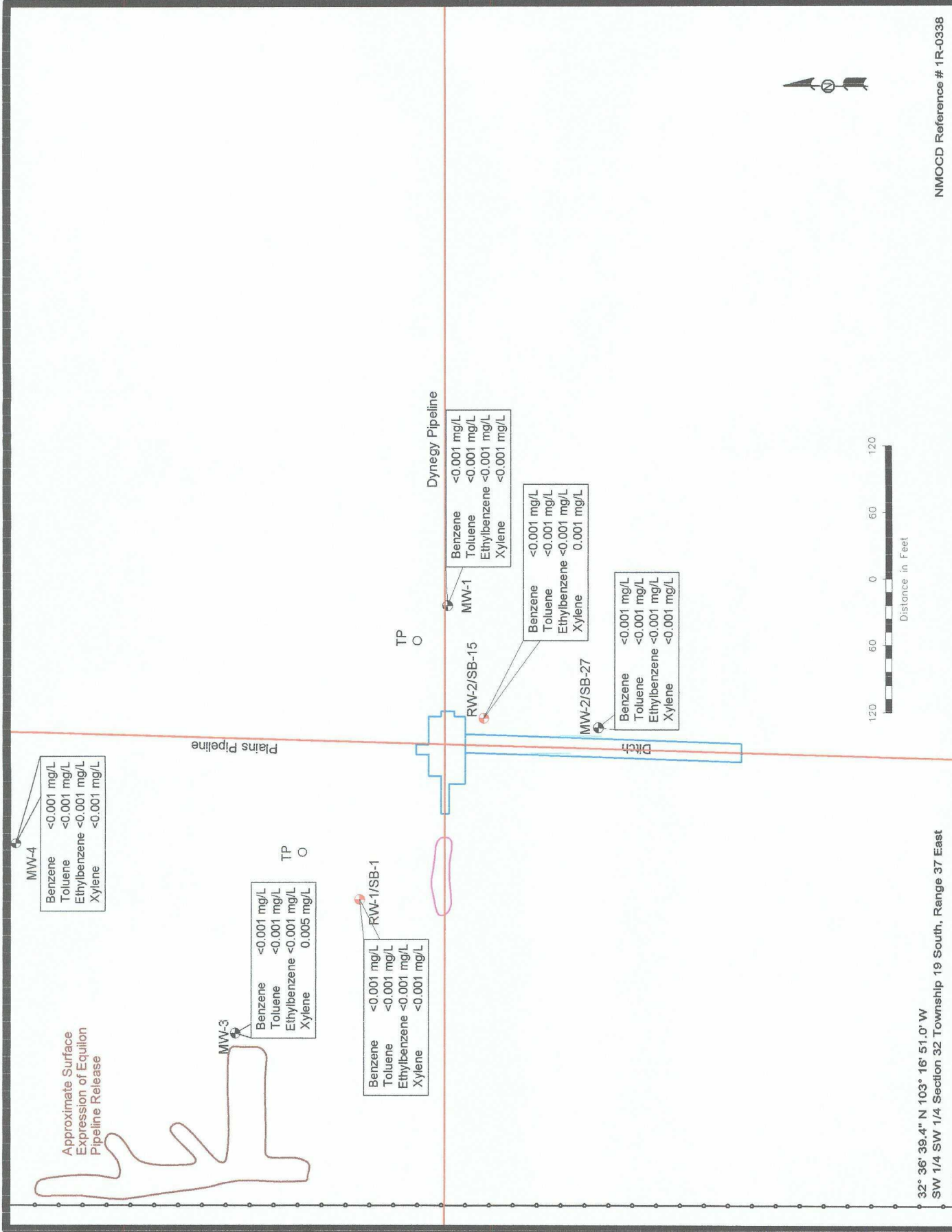
Extent of Stockpile

**(3537.20)** Groundwater Elevation (feet)

Groundwater Elevation Contour Line

0.001 ft/m





NMOCD Reference # 1R-0338

Figure 3B  
Groundwater Concentration  
and Inferred PSH Extent  
Map (05/07/07)  
Plains Marketing, L.P.  
Monument Barber  
10-Inch Sour  
Monument, NM

NOVA  
safety and environmental

32° 36' 39.4" N 103° 16' 51.0" W  
SW 1/4 SW 1/4 Section 32 Township 19 South, Range 37 East

**LEGEND:**

- Utility Pole
- Monitoring Well Location
- Recovery Well Location
- Stockpile Location
- Fence

**Extent of Stockpile**

- <0.001
- Equilon Pipeline Release
- Extent of Excavation
- Not Sampled

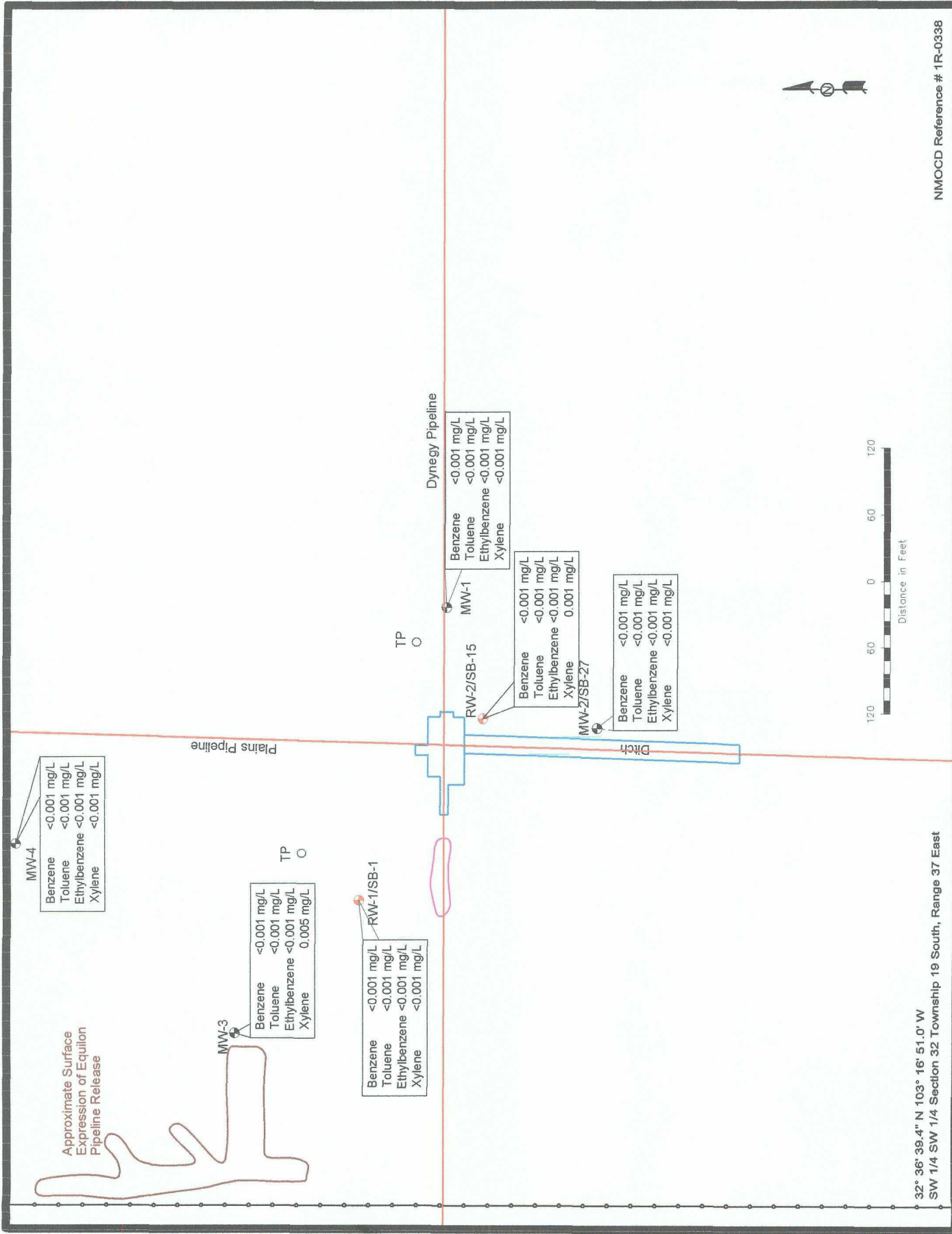
**NOVA**  
safety and environmental

**NOVA Safety and Environmental**

Scale: 1" = 120' | CAD By: DGC | Checked By: CDS

September 26, 2007





NMOCD Reference # 1R-0338

**NOVA Safety and Environmental**

Scale: 1" = 120' CAD By: DGC Checked By: CDS  
September 25, 2007

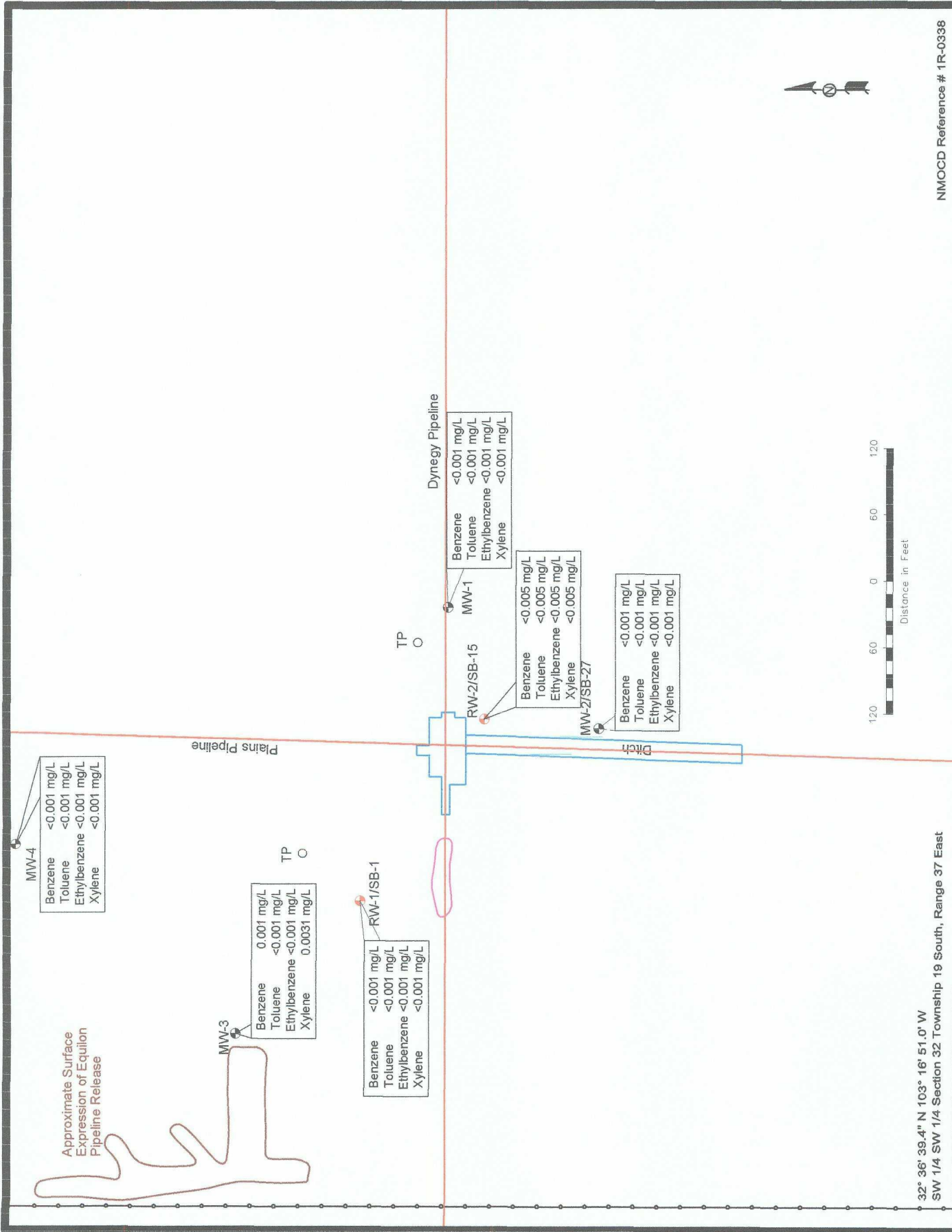
**Figure 3C**  
Groundwater Concentration  
and Inferred PSH Extent  
Map (08/08/07)  
Plains Marketing, L.P.  
Monument Barber  
10-Inch Sour  
Monument, NM



**LEGEND:**

- Utility Pole
- Monitoring Well Location
- Recovery Well Location
- Stockpile
- Extent of Stockpile
- Constituent Concentration (mg/L)
- Equilon Pipeline Release
- Extent of Excavation
- Not Sampled

<0.001  
 NS



NMOCD Reference # 1R-0338

**NOVA Safety and Environmental**

Scale: 1" = 120' CAD By: DGC Checked By: CDS  
September 25, 2007

**Figure 3D**  
Groundwater Concentration and Inferred PSH Extent Map (11/16/07)  
Plains Marketing, L.P.  
Monument Barber  
10-Inch Sour  
Monument, NM



# Tables

TABLE 1

## 2007 GROUNDWATER ELEVATION DATA

PLAINS MARKETING, L.P.  
 MONUMENT BARBER ESTATE 10" SOUR  
 LEA COUNTY, NEW MEXICO  
 NMOCD REFERENCE NUMBER 1R-0338

WELL NUMBER	DATE MEASURED	TOP OF CASING ELEVATION	DEPTH TO PRODUCT	DEPTH TO WATER	PSH THICKNESS	CORRECTED GROUND WATER ELEVATION
MW-1	01/04/07	3,565.64	-	28.80	0.00	3536.84
	02/19/07	3,565.64	-	28.83	0.00	3536.81
	05/07/07	3,565.64	-	28.87	0.00	3536.77
	08/08/07	3,565.64	-	28.88	0.00	3536.76
	11/16/07	3,565.64	-	28.90	0.00	3536.74
MW-2	01/04/07	3,565.58	-	28.86	0.00	3536.72
	02/19/07	3,565.58	-	29.00	0.00	3536.58
	05/07/07	3,565.58	-	29.01	0.00	3536.57
	08/08/07	3,565.58	-	29.11	0.00	3536.47
	11/16/07	3,565.58	-	29.18	0.00	3536.40
MW-3	01/04/07	3,567.44	-	30.30	0.00	3537.14
	02/19/07	3,567.44	sheen	30.36	0.00	3537.08
	05/07/07	3,567.44	-	30.32	0.00	3537.12
	08/08/07	3,567.44	-	30.33	0.00	3537.11
	11/16/07	3,567.44	-	30.42	0.00	3537.02
MW-4	01/04/07	3,567.27	-	30.88	0.00	3536.39
	02/19/07	3,567.27	-	30.13	0.00	3537.14
	05/07/07	3,567.27	-	30.15	0.00	3537.12
	08/08/07	3,567.27	-	30.19	0.00	3537.08
	11/16/07	3,567.27	-	30.19	0.00	3537.08
RW-1	01/04/07	3,566.48	-	29.29	0.00	3537.19
	02/19/07	3,566.48	-	29.38	0.00	3537.10
	05/07/07	3,566.48	-	29.32	0.00	3537.16
	08/08/07	3,566.48	-	29.41	0.00	3537.07
	11/16/07	3,566.48	-	29.43	0.00	3537.05
RW-2	01/04/07	3,566.09	-	29.06	0.00	3537.03
	02/19/07	3,566.09	sheen	29.14	0.00	3536.95
	05/07/07	3,566.09	-	29.19	0.00	3536.90
	08/08/07	3,566.09	-	29.28	0.00	3536.81
	11/16/07	3,566.09	-	29.30	0.00	3536.79

TABLE 2

## 2007 CONCENTRATIONS OF BTEX IN GROUNDWATER

PLAINS MARKETING, L.P.  
 MONUMENT 10" SOUR  
 LEA COUNTY, NEW MEXICO  
 NMOCD REFERENCE NUMBER 1R-0338

*Results are reported in mg/L.*

SAMPLE LOCATION	SAMPLE DATE	Method: SW 846-8021B, 5030				
		BENZENE	TOLUENE	ETHYL-BENZENE	m, p - XYLENES	o - XYLENE
NMOCD Regulatory Limit		0.01	0.75	0.75	Total XYLENES	
					0.62	
MW-1	01/04/07	<0.001	<0.001	<0.001	<0.001	
	02/19/07	<0.001	<0.001	<0.001	<0.001	
	05/07/07	<0.001	<0.001	<0.001	<0.001	
	08/08/07	<0.001	<0.001	<0.001	<0.001	
	11/16/07	<0.001	<0.001	<0.001	<0.001	
MW-2	01/04/07	<0.001	<0.001	<0.001	<0.001	
	02/19/07	<0.001	<0.001	<0.001	<0.001	
	05/07/07	<0.001	<0.001	<0.001	<0.001	
	08/08/07	<0.001	<0.001	<0.001	<0.001	
	11/16/07	<0.001	<0.001	<0.001	<0.001	
MW-3	01/04/07	<0.001	<0.001	<0.001	0.004	
	02/19/07	<0.001	<0.001	<0.001	0.005	
	05/07/07	<0.001	<0.001	<0.001	0.005	
	08/08/07	<0.001	<0.001	<0.001	<0.001	
	11/16/07	0.001	<0.001	<0.001	0.0031	
MW-4	01/04/07	<0.001	<0.001	<0.001	<0.001	
	02/19/07	<0.001	<0.001	<0.001	<0.001	
	05/07/07	<0.001	<0.001	<0.001	<0.001	
	08/08/07	<0.001	<0.001	<0.001	<0.001	
	11/16/07	<0.001	<0.001	<0.001	<0.001	
RW-1	01/04/07	<0.001	<0.001	<0.001	0.002	
	02/19/07	<0.001	<0.001	<0.001	<0.001	
	05/07/07	<0.001	<0.001	<0.001	<0.001	
	08/08/07	<0.001	<0.001	<0.001	<0.001	
	11/16/07	<0.001	<0.001	<0.001	<0.001	
RW-2	01/04/07	0.003	<0.001	<0.001	0.003	
	02/19/07	<0.001	<0.001	<0.001	0.001	
	05/07/07	<0.001	<0.001	<0.001	0.001	
	08/08/07	<0.001	<0.001	<0.001	0.001	
	11/16/07	<0.005	<0.005	<0.005	<0.005	



# Appendices

Appendix A  
Release Notification and Corrective Action  
(Form C-141)

District I  
1625 N. French Dr., Hobbs, NM 88240  
District II  
811 South First, Artesia, NM 88210  
District III  
1000 Rio Brazos Road, Aztec, NM 87410  
District IV  
2040 South Pacheco, Santa Fe, NM 87505

State of New Mexico  
Energy Minerals and Natural Resources

Oil Conservation Division  
2040 South Pacheco  
Santa Fe, NM 87505

Form C-141  
Revised March 17, 1999

Submit 2 Copies to appropriate  
District Office in accordance  
with Rule 116 on back  
side of form.

## Release Notification and Corrective Action

### OPERATOR

☒ Initial Report ☐ Final Report

Name of Company <b>EOTT Energy Pipeline Limited Partnership</b>	Contact <b>Glenn Waldrop</b>
Address <b>P.O. Box 1660, Midland, TX 79702</b>	Telephone No. <b>915/684-3453</b>
Facility Name <b>Monument 10" Sour (6")</b>	Facility Type <b>Pipeline</b>

Surface Owner <b>Barber Estate</b>	Mineral Owner	Lease No.
---------------------------------------	---------------	-----------

### LOCATION OF RELEASE

Unit Letter	Section <b>32</b>	Township <b>19S</b>	Range <b>37E</b>	Feet from the	North/South Line	Feet from the	East/West Line	County <b>Lee</b>
-------------	----------------------	------------------------	---------------------	---------------	------------------	---------------	----------------	----------------------

### NATURE OF RELEASE

Type of Release <b>Sour Crude Oil</b>	Volume of Release <b>1,600 bbls</b>	Volume Recovered <b>1,350 bbls</b>
Source of Release <b>Pipeline valve flange</b>	Date and Hour of Occurrence <b>August 8, 2000</b>	Date and Hour of Discovery <b>August 8, 2000 at 10 AM</b>
Was Immediate Notice Given? <input checked="" type="checkbox"/> Yes <input type="checkbox"/> No <input type="checkbox"/> Not Required	If YES, To Whom? <b>Donna Williams - NMOCD, Hobbs District Office</b>	
By Whom? <b>Wayne Brunette</b>	Date and Hour <b>August 8, 2000</b>	
Was a Watercourse Reached? <input type="checkbox"/> Yes <input checked="" type="checkbox"/> No	If YES, Volume Impacting the Watercourse.	

If a Watercourse was Impacted, Describe Fully.  
**N/A**

#### Describe Cause of Problem and Remedial Action Taken.\*

Poly weld broke on the west end of valve flange. Released oil was contained in a bell hole and ditch. Bellhole (35'x45'x10'deep) filled to top and oil flowed into a ditch 100 yards long. Oil was recovered with a vacuum truck.

#### Describe Area Affected and Cleanup Action Taken.\*

Heavily impacted soil, from the ditch only, was excavated and hauled to a landfarm for treatment. Soils in the bellhole could not be excavated due to the presence of pipelines. ETGI has begun delineating the site and will prepare a remediation workplan.

I hereby certify that the information given above is true and complete to the best of my knowledge and understand that pursuant to NMOCD rules and regulations all operators are required to report and/or file certain release notifications and perform corrective actions for releases which may endanger public health or the environment. The acceptance of a C-141 report by the NMOCD marked as "Final Report" does not relieve the operator of liability should their operations have failed to adequately investigate and remediate contamination that pose a threat to ground water, surface water, human health or the environment. In addition, NMOCD acceptance of a C-141 report does not relieve the operator of responsibility for compliance with any other federal, state, or local laws and/or regulations.

Signature: <i>Glenn Waldrop</i>	<b>OIL CONSERVATION DIVISION</b>	
Printed Name: <b>Glenn Waldrop</b>	Approved by District Supervisor:	
Title: <b>District Manager</b>	Approval Date:	Expiration Date:
Date: <b>8/17/00</b> Phone: <b>915/684-3453</b>	Conditions of Approval:	Attached <input type="checkbox"/>

\* Attach Additional Sheets If Necessary

MONUMENT BARBER  
MONUMENT 10" SOUR