

OIL CONSERVATION DIVISION
RECEIVED

AMERADA HESS CORPORATION

'94 JAN 24 AM 10 39

P. O. DRAWER "D"
MONUMENT, NEW MEXICO 88265

January 20, 1994

New Mexico Oil Conservation Division
Attn: Mr. William J. Lemay
P.O. Box 2088
Santa Fe, New Mexico 87504

RE: Application For Unorthodox Location

Dear Mr. Lemay:

Amerada Hess respectfully requests administrative approval for an unorthodox location for the NMGSAU #1828. Amerada Hess is the sole offset operator to this location. The NMGSAU project was established by Division Order No. R-9596, dated October 15, 1992, Eunice Monument Grayburg-San Andres Pool, North Monument Grayburg-San Andres Unit, Lea County, New Mexico.

In support of this application, please find a plat outlining the proposed unorthodox location, and a unit map showing all offset properties.

Sincerely,

Eric Haas for David Ricks
David Ricks
Sr. Petroleum Engineer
NMGSAU

DDR:tlh
Attachment
xc: Jeff Hermann
Jim Almrud
Roy Wheeler
Eric Haas
Gary Greer
File

NMGSAU
#1828
SEC 2, T-20-S, R-36-E

NMGSAU

City of Monument

Submit to Appropriate
District Office
State Lease - 4 copies
Fee Lease - 3 copies

State of New Mexico
Energy, Minerals and Natural Resources Department

Form C-102
Revised 1-1-89

OIL CONSERVATION DIVISION

P.O. Box 2088
Santa Fe, New Mexico 87504-2088

DISTRICT I
P.O. Box 1980, Hobbs, NM 88240

DISTRICT II
P.O. Drawer DD, Artesia, NM 88210

DISTRICT III
1000 Rio Brazos Rd., Aztec, NM 87410

WELL LOCATION AND ACREAGE DEDICATION PLAT

All Distances must be from the outer boundaries of the section

Operator AMARADA HESS CORPORATION			Lease INFILL WELL # 1828		Well No. NMGSAU #1828
Unit Letter G	Section 2	Township 20 South	Range 36 East	County Lea	
Actual Footage Location of Well: 1338 feet from the East line and 2622 feet from the North line					
Ground level Elev. 3582.2	Producing Formation Grayburg San Andres		Pool Eunice Monument Grayburg San	Dedicated Acreage: 40 Acres	

1. Outline the acreage dedicated to the subject well by colored pencil or hatchure marks on the plat below.
2. If more than one lease is dedicated to the well, outline each and identify the ownership thereof (both as to working interest and royalty).
3. If more than one lease of different ownership is dedicated to the well, have the interest of all owners been consolidated by communitization, unitization, force-pooling, etc.?
☒ Yes ☐ No If answer is "yes" type of consolidation Order No. R-9494
If answer is "no" list the owners and tract descriptions which have actually been consolidated. (Use reverse side of this form if necessary.)
No allowable will be assigned to the well until all interests have been consolidated (by communitization, unitization, forced-pooling, or otherwise) or until a non-standard unit, eliminating such interest, has been approved by the Division.

OPERATOR CERTIFICATION

I hereby certify that the information contained herein is true and complete to the best of my knowledge and belief.

Signature

Eric Haas

Printed Name

Eric Haas

Position

Sr. Production Foreman

Company

Amerada Hess Corporation

Date

1-20-94

SURVEYOR CERTIFICATION

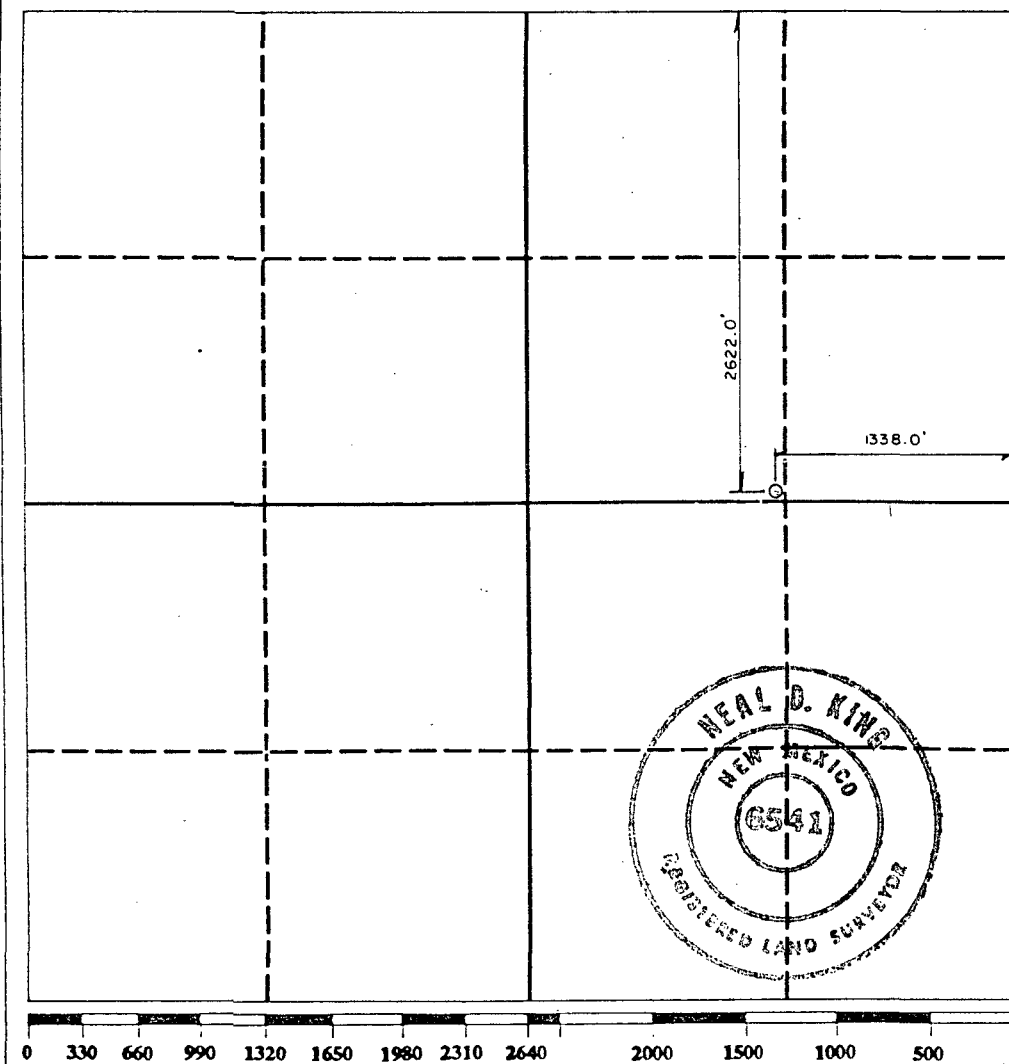
I hereby certify that the well location shown on this plat was plotted from field notes of actual surveys made by me or under my supervision, and that the same is true and correct to the best of my knowledge and belief.

Date Surveyed

1/6/94

Signature & Seal of
Professional Surveyor

Neal D. King
Certificate No. 6541



Submit to Appropriate
District Office
State Lease - 4 copies
Fee Lease - 3 copies

State of New Mexico
Energy, Minerals and Natural Resources Department

Form C-102
Revised 1-1-89

OIL CONSERVATION DIVISION

P.O. Box 2088

Santa Fe, New Mexico 87504-2088

DISTRICT I
P.O. Box 1980, Hobbs, NM 88240

DISTRICT II
P.O. Drawer DD, Artesia, NM 88210

DISTRICT III
1000 Rio Brazos Rd., Aztec, NM 87410

WELL LOCATION AND ACREAGE DEDICATION PLAT

All Distances must be from the outer boundaries of the section

Operator AMARADA HESS CORPORATION		Lease INFILL WELL # 1828		Well No. NMGSAU #1828
Unit Letter G	Section 2	Township 20 South	Range 36 East NMPM	County Lea
Actual Footage Location of Well: 1338 feet from the East line and 2622 feet from the North line				
Ground level Elev. 3582.2	Producing Formation Grayburg San Andres	Pool Eunice Monument Grayburg San	Dedicated Acreage: 40 Acres	

1. Outline the acreage dedicated to the subject well by colored pencil or hatchure marks on the plat below.
2. If more than one lease is dedicated to the well, outline each and identify the ownership thereof (both as to working interest and royalty).
3. If more than one lease of different ownership is dedicated to the well, have the interest of all owners been consolidated by communitization, unitization, force-pooling, etc.?
☒ Yes ☐ No If answer is "yes" type of consolidation Order No. R-9494
If answer is "no" list the owners and tract descriptions which have actually been consolidated. (Use reverse side of this form if necessary.)
No allowable will be assigned to the well until all interests have been consolidated (by communitization, unitization, forced-pooling, or otherwise) or until a non-standard unit, eliminating such interest, has been approved by the Division.

OPERATOR CERTIFICATION

I hereby certify that the information contained herein is true and complete to the best of my knowledge and belief.

Signature

Eric Haas

Printed Name

Eric Haas

Position

Sr. Production Foreman

Company

Amerada Hess Corporation

Date

1-20-94

SURVEYOR CERTIFICATION

I hereby certify that the well location shown on this plat was plotted from field notes of actual surveys made by me or under my supervision, and that the same is true and correct to the best of my knowledge and belief.

Date Surveyed

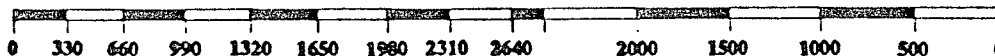
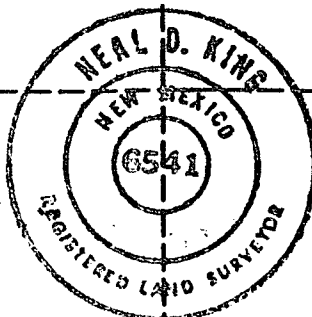
1/6/94

Signature & Seal of
Professional Surveyor

Neal D. King

Certificate No.

6541



Submit to Appropriate
District Office
State Lease - 4 copies
Fee Lease - 3 copies

State of New Mexico
Energy, Minerals and Natural Resources Department

Form C-102
Revised 1-1-89

OIL CONSERVATION DIVISION

DISTRICT I
P.O. Box 1980, Hobbs, NM 88240

P.O. Box 2088

Santa Fe, New Mexico 87504-2088

DISTRICT II
P.O. Drawer DD, Artesia, NM 88210

DISTRICT III
1000 Rio Brazos Rd., Aztec, NM 87410

WELL LOCATION AND ACREAGE DEDICATION PLAT

All Distances must be from the outer boundaries of the section

Operator AMARADA HESS CORPORATION			Lease INFILL WELL # 1828		Well No. NMGSAU #1828
Unit Letter G	Section 2	Township 20 South	Range 36 East	County Lea	
Actual Footage Location of Well: 1338 feet from the East line and 2622 feet from the North line					
Ground level Elev. 3582.2	Producing Formation Grayburg San Andres		Pool Eunice Monument Grayburg San	Address	Dedicated Acreage: 40 Acres

1. Outline the acreage dedicated to the subject well by colored pencil or hatchure marks on the plat below.
2. If more than one lease is dedicated to the well, outline each and identify the ownership thereof (both as to working interest and royalty).
3. If more than one lease of different ownership is dedicated to the well, have the interest of all owners been consolidated by communitization, unitization, force-pooling, etc.?
☒ Yes ☐ No If answer is "yes" type of consolidation Order No. R-9494
If answer is "no" list the owners and tract descriptions which have actually been consolidated. (Use reverse side of this form if necessary.)
No allowable will be assigned to the well until all interests have been consolidated (by communitization, unitization, forced-pooling, or otherwise) or until a non-standard unit, eliminating such interest, has been approved by the Division.

OPERATOR CERTIFICATION

I hereby certify that the information contained herein is true and complete to the best of my knowledge and belief.

Signature

Printed Name

Position

Company

Date

1-20-94

SURVEYOR CERTIFICATION

I hereby certify that the well location shown on this plat was plotted from field notes of actual surveys made by me or under my supervision, and that the same is true and correct to the best of my knowledge and belief.

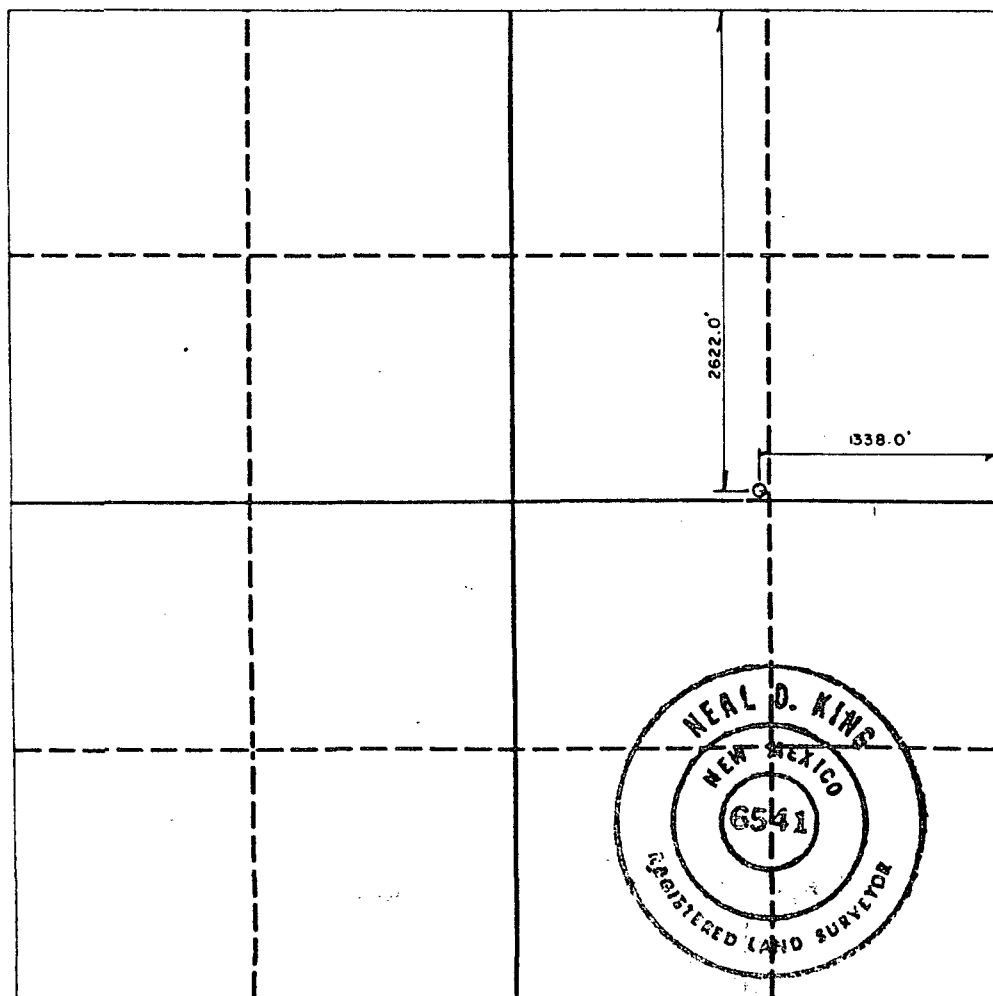
Date Surveyed

1/6/94

Signature & Seal of
Professional Surveyor

Certificate No.

6541



Submit to Appropriate
District Office
State Lease - 4 copies
Fee Lease - 3 copies

State of New Mexico
Energy, Minerals and Natural Resources Department

Form C-102
Revised 1-1-89

OIL CONSERVATION DIVISION

DISTRICT I
P.O. Box 1980, Hobbs, NM 88240

P.O. Box 2088

Santa Fe, New Mexico 87504-2088

DISTRICT II
P.O. Drawer DD, Artesia, NM 88210

DISTRICT III
1000 Rio Brazos Rd., Aztec, NM 87410

WELL LOCATION AND ACREAGE DEDICATION PLAT

All Distances must be from the outer boundaries of the section

Operator AMARADA HESS CORPORATION		Lease INFILL WELL # 1828		Well No. NMGSAU #1828
Unit Letter G	Section 2	Township 20 South	Range 36 East NMPM	County Lea
Actual Footage Location of Well: 1338 feet from the East line and 2622 feet from the North line				
Ground level Elev. 3582.2	Producing Formation Grayburg San Andres	Pool Eunice Monument Grayburg San	Andres	Dedicated Acreage: 40 Acres

1. Outline the acreage dedicated to the subject well by colored pencil or hatchure marks on the plat below.
2. If more than one lease is dedicated to the well, outline each and identify the ownership thereof (both as to working interest and royalty).
3. If more than one lease of different ownership is dedicated to the well, have the interest of all owners been consolidated by communitization, unitization, force-pooling, etc.?
☒ Yes ☐ No If answer is "yes" type of consolidation Order No. R-9494
If answer is "no" list the owners and tract descriptions which have actually been consolidated. (Use reverse side of this form if necessary.)
No allowable will be assigned to the well until all interests have been consolidated (by communitization, unitization, forced-pooling, or otherwise) or until a non-standard unit, eliminating such interest, has been approved by the Division.

OPERATOR CERTIFICATION

I hereby certify that the information contained herein is true and complete to the best of my knowledge and belief.

Signature

Eric Haas

Printed Name

Eric Haas

Position

Sr. Production Foreman

Company

Amerada Hess Corporation

Date

1-20-94

SURVEYOR CERTIFICATION

I hereby certify that the well location shown on this plat was plotted from field notes of actual surveys made by me or under my supervision, and that the same is true and correct to the best of my knowledge and belief.

Date Surveyed

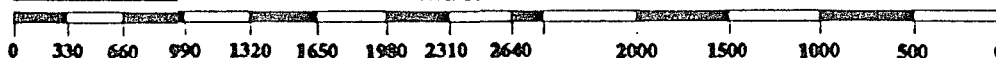
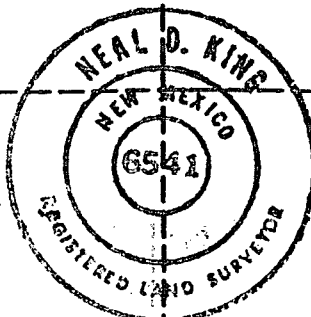
1/6/94

Signature & Seal of
Professional Surveyor

Neal O. King

Certificate No.

6541



Submit to Appropriate
District Office
State Lease - 4 copies
Fee Lease - 3 copies

State of New Mexico
Energy, Minerals and Natural Resources Department

Form C-102
Revised 1-1-89

OIL CONSERVATION DIVISION

DISTRICT I
P.O. Box 1980, Hobbs, NM 88240

P.O. Box 2088

Santa Fe, New Mexico 87504-2088

DISTRICT II
P.O. Drawer DD, Artesia, NM 88210

DISTRICT III
1000 Rio Brazos Rd., Aztec, NM 87410

WELL LOCATION AND ACREAGE DEDICATION PLAT

All Distances must be from the outer boundaries of the section

Operator AMARADA HESS CORPORATION			Lease INFILL WELL # 1828		Well No. NMGSAU #1828
Unit Letter G	Section 2	Township 20 South	Range 36 East	County Lea	NMPM
Actual Footage Location of Well: 1338 feet from the East line and 2622 feet from the North line					
Ground level Elev. 3582.2	Producing Formation Grayburg San Andres		Pool Eunice Monument Grayburg San	Andres	Dedicated Acreage: 40 Acres

1. Outline the acreage dedicated to the subject well by colored pencil or hatchure marks on the plat below.
2. If more than one lease is dedicated to the well, outline each and identify the ownership thereof (both as to working interest and royalty).
3. If more than one lease of different ownership is dedicated to the well, have the interest of all owners been consolidated by communitization, unitization, force-pooling, etc?
☒ Yes ☐ No If answer is "yes" type of consolidation Order No. R-9494
If answer is "no" list the owners and tract descriptions which have actually been consolidated. (Use reverse side of this form if necessary.)
No allowable will be assigned to the well until all interests have been consolidated (by communitization, unitization, forced-pooling, or otherwise) or until a non-standard unit, eliminating such interest, has been approved by the Division.

OPERATOR CERTIFICATION

I hereby certify that the information contained herein is true and complete to the best of my knowledge and belief.

Signature

Eric Haas

Printed Name

Eric Haas

Position

Sr. Production Foreman

Company

Amerada Hess Corporation

Date

1-20-94

SURVEYOR CERTIFICATION

I hereby certify that the well location shown on this plat was plotted from field notes of actual surveys made by me or under my supervision, and that the same is true and correct to the best of my knowledge and belief.

Date Surveyed

1/6/94

Signature & Seal of
Professional Surveyor

Certificate No.

6541

