

MERIDIAN OIL

OIL CONSERVATION DIVISION
RECEIVED

1994 MAR 14 AM 8 39

March 11, 1994

Sent Federal Express

Mr. William LeMay
New Mexico Oil Conservation Division
Post Office Box 2088
Santa Fe, New Mexico 87501

Re: Meridian Oil Inc. San Juan 29-7 Unit #92R
450'FSL, 2025'FWL, Section 16, T-29-N, R-7-W - Rio Arriba County, New Mexico
API # 30-039-25341

Dear Mr. LeMay:

Meridian Oil Inc. is applying for administrative approval of a non-standard location for the above location in the Blanco Mesa Verde formation. This application for the referenced location is due to terrain as shown on the topographic map and archaeology.

The following attachments are for your review:

1. Application for Permit to Drill.
2. Completed C-102 at referenced location.
3. Offset operators/owners plat
4. 7.5 minute topographic map showing the orthodox windows for the southwest quarter dedication for the Pictured Cliffs and the south half dedication for the Fruitland Coal; and enlargement of the map to define topographic features.
5. If the well were directionally drilled to a standard bottom hole location, the economics would be severely burdened due to the incremental directional drilling costs of \$110,000.

Meridian Oil Inc. is operator of the San Juan 29-7 Unit and is the offsetting operator for this section.

Sincerely,



Peggy Bradfield
Regulatory/Compliance Representative

encs.

1994 MAR 14 AM 8 39

OIL CONSERVATION DIVISION
RECEIVED

RECEIVED

NOV 15 1993

State of New Mexico
Energy, Minerals and Natural Resources Department
OIL CONSERVATION DIVISION

OIL CON. DIV. 1
DIST. 3

APPLICATION FOR PERMIT TO DRILL, DEEPEN, OR PLUG BACK

		API No. (assigned by OCD on new wells) <u>30-039-25341</u>
1a. Type of Work DRILL		5. Indicate Type of Lease STATE XX FEE _____
1b. Type of Well GAS	Single Zone <u>X</u> Multiple Zone _____	6. State Oil & Gas Lease No. B-10037-58
2. Operator MERIDIAN OIL INC.		7. Lease Name or Unit Agreement Name San Juan 29-7 Unit
3. Address & Phone No. of Operator PO Box 4289, Farmington, NM 87499 (505) 326-9700		8. Well Number 92R 9. Pool Name or Wildcat Blanco Mesa Verde
4. Location of Well Unit Letter N, 450' FSL, 2025' FWL Latitude 36° 43' 11", Longitude 107° 34' 39"		4a. Sec., Twn, Range, Mer. Sec 16, T-29-N, R-7-W 4b. County Rio Arriba
10. Proposed Depth 5750'	11. Formation Mesa Verde	12. Rotary or Cable Tools Rotary
13. Elevations (DF, FT, GR, Etc.) 6313' GR	14. Kind & Status Plug Bond Statewide	15. Approx Date Work will Start 4th quarter 1993

16. Proposed Casing and Cementing Program

Size of Hole	Csg. Size	Weight/Ft.	Setting Depth	Sacks of Cement	Est. Top
12 1/4"	9 5/8"	32.3#	200'	160 sx	surf
8 3/4"	7"	20.0#	3275'	606 sx-2 stages	surf
6 1/4"	4 1/2"	10.5#	5750'	300 sx	circ

The West/2 of Section 16 is dedicated to this well.
This gas is dedicated.
The Mesa Verde formation will be completed.

This Approval
Expires 11-16-94
And Will Not Be

I hereby certify that the information above is true and complete to the best of my knowledge and belief.

Authorized by: J.W. Caldwell
J.W. Caldwell, Regional Drilling Engineer

11-3-93
Date

This space for State Use

APPROVED BY: [Signature] DEPUTY OIL & GAS INSPECTOR, DIST. 43
TITLE _____

DATE NOV 16 1993

Conditions of Approval, if any:

NOTE: This format is issued in lieu of NMOCD Form C-101 (Revised 1-1-89)

C-104 FOR NISL

Submit to Appropriate
District Office
State Leases - 4 copies
Fee Leases - 3 copies

State of New Mexico
Energy, Minerals and Natural Resources Department

Form C-102
Revised 1-1-89

OIL CONSERVATION DIVISION

DISTRICT I
P.O. Box 1980, Hobbs, NM 88240

P.O. Box 2088
Santa Fe, New Mexico 87504-2088

DISTRICT II
P.O. Drawer DD, Artesia, NM 88210

DISTRICT III
1000 Rio Brazos Rd., Aztec, NM 87410

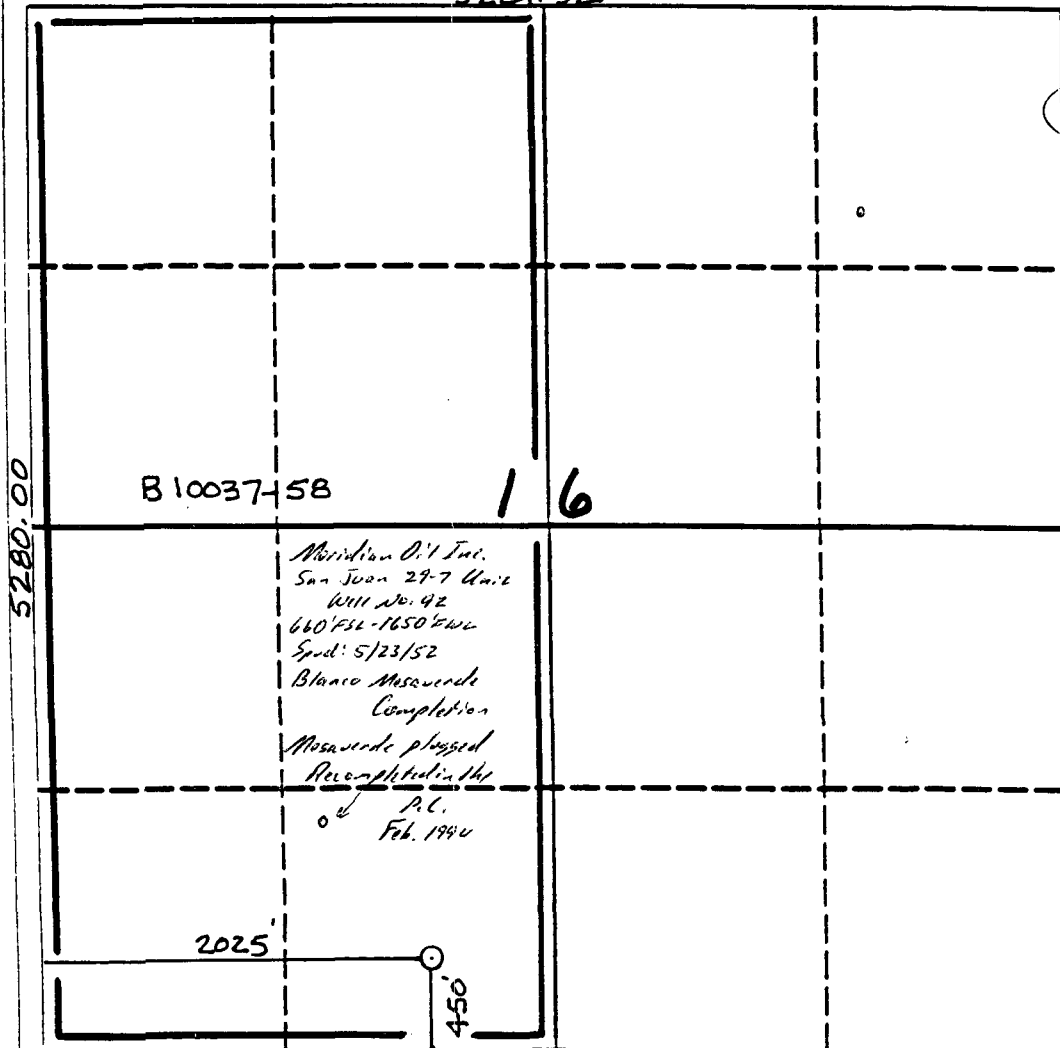
WELL LOCATION AND ACREAGE DEDICATION PLAT

All Distances must be from the outer boundaries of the section

Operator Meridian Oil Inc.		Lease San Juan 29-7 Unit		Well No. 92R
Unit Letter N	Section 16	Township 29 North	Range 7 West	County Rio Arriba
Actual Forage Location of Well: 450 feet from the South line and 2025 feet from the West line				
Ground level Elev. 6313'	Producing Formation Mesa Verde	Pool Blanco	Dedicated Acreage: 320 Acres	

- Outline the acreage dedicated to the subject well by colored pencil or ink on the plat below.
- If more than one lease is dedicated to the well, outline each and identify the ownership thereof (both as to working interest and royalty).
- If more than one lease of different ownership is dedicated to the well, have the interest of all owners been consolidated by communitization, unitization, force-pooling, etc.?
☒ Yes ☐ No If answer is "yes" type of consolidation unitization
If answer is "no" list the owners and tract descriptions which have actually been consolidated. (Use reverse side of this form if necessary.)
No allowable will be assigned to the well until all interests have been consolidated (by communitization, unitization, force-pooling, or otherwise) or until a non-standard unit, eliminating such interest, has been approved by the Division.

5281.32'



OPERATOR CERTIFICATION

I hereby certify that the information contained herein is true and complete to the best of my knowledge and belief.

Peggy Bradfield
Signature
Peggy Bradfield

Printed Name
Regulatory Representative

Position
Meridian Oil Inc.

Company
3-11-94

Date

SURVEYOR CERTIFICATION

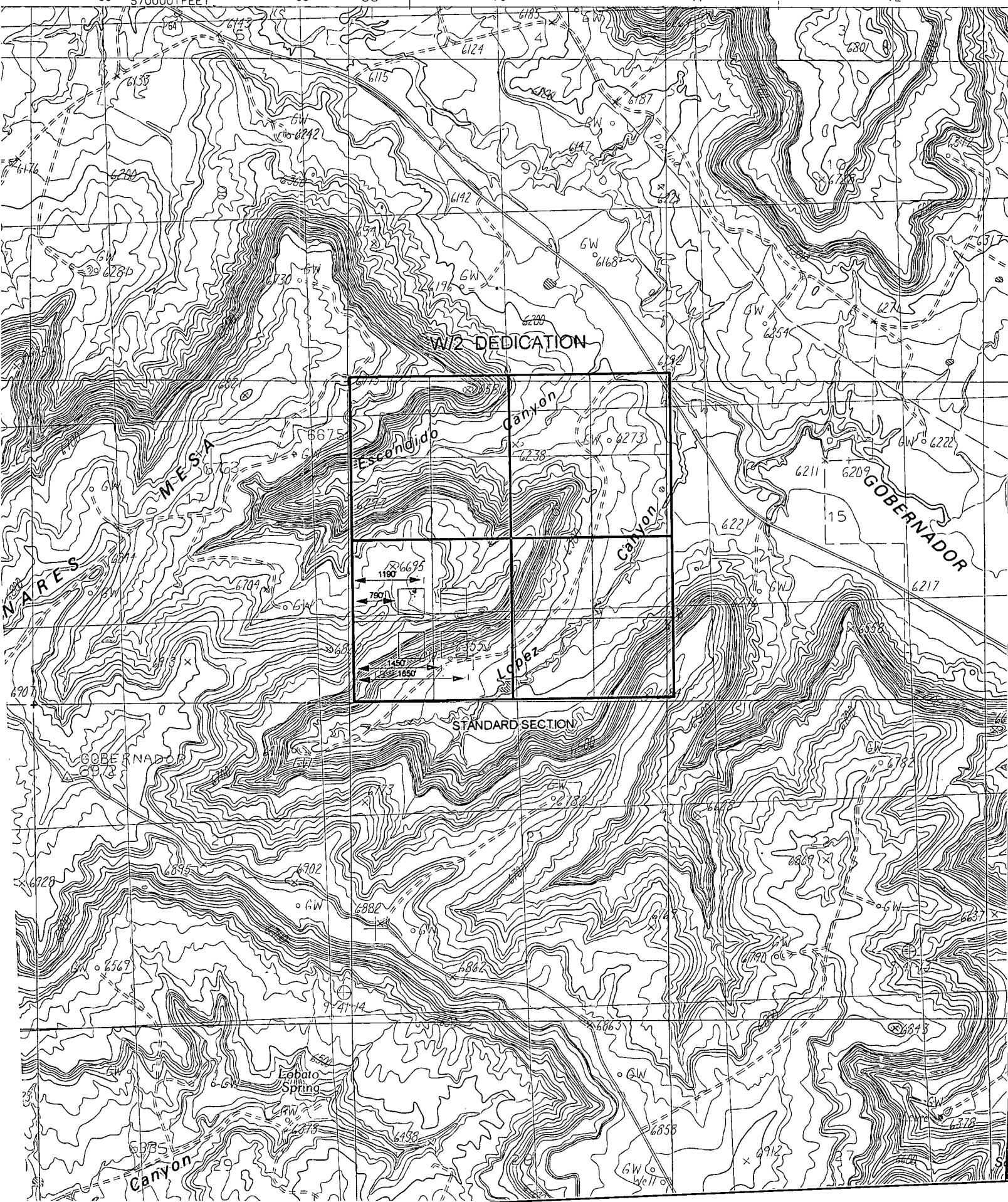
I hereby certify that the well location shown on this plat was plotted from field notes of actual surveys made by me or under my supervision, and that the same is true and correct to the best of my knowledge and belief. 10-5-93

Date Surveyed
Neville C. Edwards

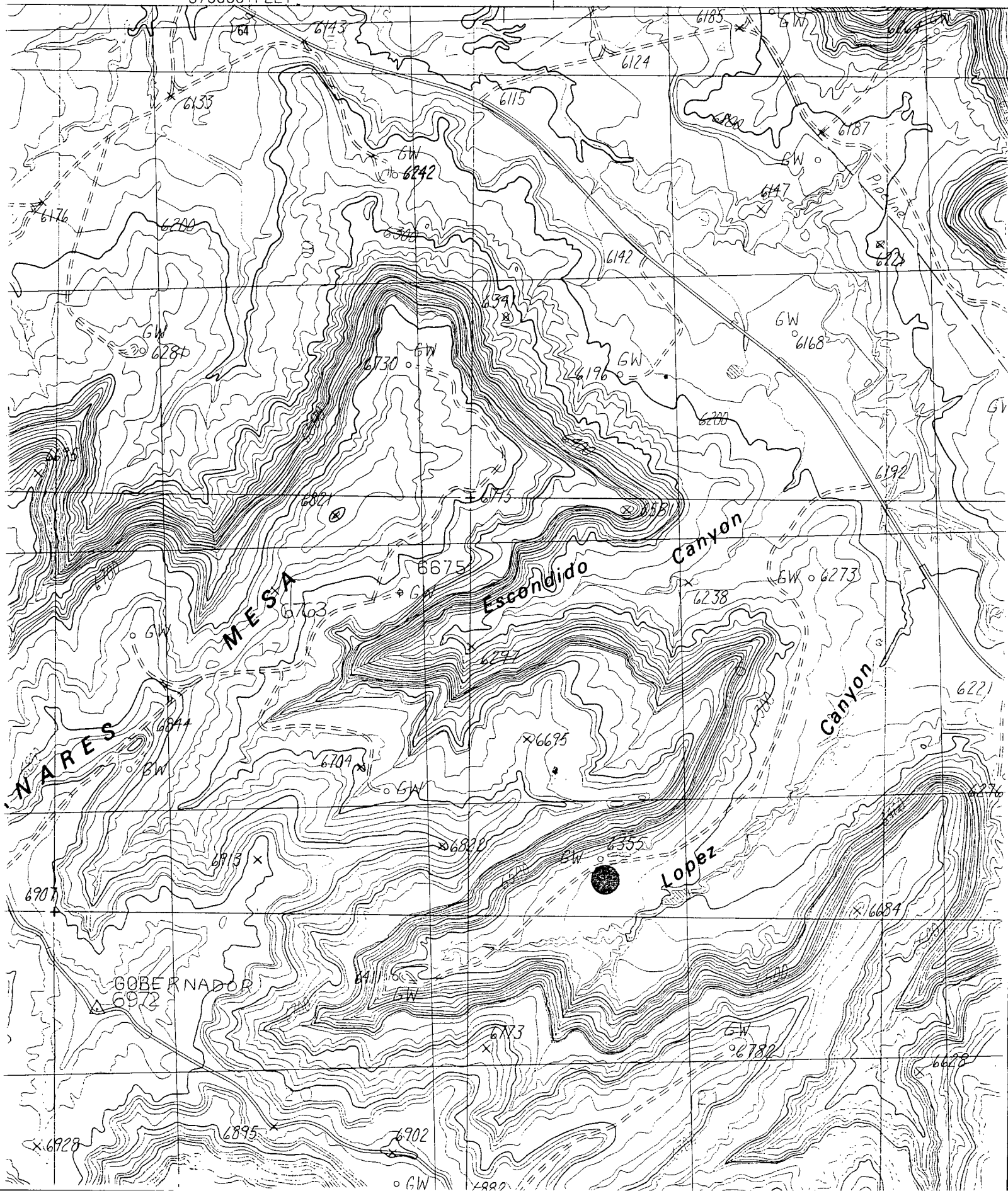
Signature of State Professional Surveyor
6857

6857

1) Meridian Oil Inc



268 570000 FEET 269 35' 270 271





STATE OF NEW MEXICO
ENERGY, MINERALS AND NATURAL RESOURCES DEPARTMENT

OIL CONSERVATION DIVISION



BRUCE KING
GOVERNOR

ANITA LOCKWOOD
CABINET SECRETARY

POST OFFICE BOX 2088
STATE LAND OFFICE BUILDING
SANTA FE, NEW MEXICO 87504
(505) 827-5800

November 3, 1993

Meridian Oil, Inc.
P.O. Box 4289
Farmington, NM 87499-4289

Attention: Peggy Bradfield

Administrative Order NSL-3327

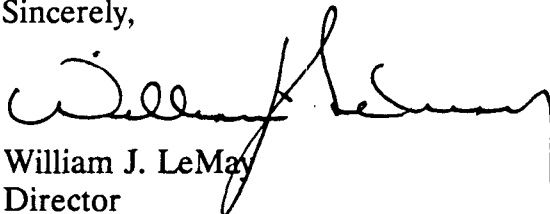
Dear Ms. Bradfield:

Reference is made to your application dated October 27, 1993, for a non-standard Pictured Cliffs gas well location for your existing San Juan 29-7 Unit Well No. 92, which was drilled in 1952, 660 feet from the South line and 1650 feet from the West line (Unit N) of Section 16, Township 29 North, Range 7 West, NMPM, Rio Arriba County, New Mexico.

It is my understanding that the present Blanco Mesaverde completion will be properly plugged back and said well will be recompleted to the Pictured Cliffs formation, which pursuant to Rule 104.B(2) of the Division's General Statewide Rules, is unorthodox. Further, the SW/4 of said Section 16 shall be dedicated to the well forming a standard 160-acre gas spacing and proration unit.

By the authority granted me under the provisions of General Rule 104.F(I), the above-described unorthodox gas well location is hereby approved.

Sincerely,



William J. LeMay
Director

WJL/MES/amg

cc: Oil Conservation Division - Aztec
NM State Land Office - Santa Fe

Mike Stogner

From: Ernie Busch
To: Mike Stogner
Subject: MERIDIAN OIL INC. (NSL)
Date: Thu, Apr 7, 1994 1:41PM
Priority: High

WELL NAME: SAN JUAN 29-7 UNIT #92R
LOCATION: N-16-29N-07W
FOOTAGE: 450' FSL; 2025' FWL
RECOMMEND: APPROVAL