

OIL CONSERVATION DIVISION
RECEIVED

NSL-3401
3368
3322
3258

devon

ENERGY CORPORATION

94 JUL 5 AM 8 50

20 North Broadway, Suite 1500
Oklahoma City, Oklahoma 73102-8260

Telephone 405/235-3611
FAX 405/552-4550

June 29, 1994

Certified Mail No. P 005 347 033

State of New Mexico
Energy, Minerals and Natural Resources Department
Oil Conservation Division
Post Office Box 2088
Santa Fe, New Mexico 87504-2088

RE: Non-Standard Location Approval
East Shugart Unit, Eddy County

Gentlemen:

Devon Energy Corporation (Nevada) requests approval for Non-Standard Location for wells listed below. These unorthodox locations were due many pipelines in the area.

ESU No.	Unit	Section-T-R	Footage Location
46 <i>standard</i>	O	34-18S-31E	480' FSL & 1650' FEL
OK 50	G	35-18S-31E	1700' FNL & 2335' FEL
OK 51	P	34-18S-31E	550' FSL & 200' FEL
X 52	B	35-18S-31E	290' FNL & 2230' FEL
OK 53	A	35-18S-31E	330' FNL & 1100' FEL
54 <i>standard</i>	F	34-18S-31E	1690' FNL & 1940' FWL
55 <i>standard</i>	B	3-19S-31E	920' FNL & 1690' FEL
56 <i>standard</i>	G	35-18S-31E	2250' FNL & 1910' FEL
57 <i>standard</i>	N	35-18S-31E	375' FSL & 1950' FWL
OK 58	K	35-18S-31E	1575' FSL & 2200' FWL
OK 59	N	34-18S-31E	1100' FSL & 1650' FWL
60 <i>standard</i>	C	3-19S-31E	330' FNL & 1650' FWL
X 61	H	35-18S-31E	2550' FNL & 865' FEL
62 <i>standard</i>	G	3-19S-31E	1750' FNL & 1900' FEL
X 64	F	3-19S-31E	1660' FNL & 1600' FWL
66 <i>standard</i>	L	34-18S-31E	2300' FSL & 425' FWL
67 <i>standard</i>	I	34-18S-31E	1950' FSL & 360' FEL

The East Shugart Unit is a federal unit (#14-08-001-11572) and the proposed wells are to be part of this active waterflood project. Enclosed is a map of the East Shugart Unit showing the Unit's boundaries and a copy of form C-102 for each proposed well.

East Shugart Unit
Non-Standard Location Approval
June 29, 1994
Page Two

The wells offsetting the proposed location for ESU No. 59 and No. 60 are owned and operated by Devon, therefore, no other notification is necessary.

Operators having wells in the offsetting 40 acre tracts will be notified by certified mail. Copies of our letters of notification to the following operators are enclosed.

Amoco Production Co.	Houston, TX
Enerloc Resources Inc.	Ruidoso, NM
Marathon Oil Company	Midland, TX
Oxy U.S.A. Inc.	Midland, TX
Ozark Exploration Inc.	Dallas, TX
Phillips Petroleum Company	Farmington, NM
Jack Plemons	Lovington, NM
Texaco, Inc.	Hobbs, NM
Ray Westall	Loco Hills, NM

If you have any questions, please contact the undersigned at (405) 235-3611, X4509.

Sincerely yours,

DEVON ENERGY CORPORATION (NEVADA)



Mr. E.L. Buttross, Jr.
District Engineer

/cg
Enclosures

cc: Oil Conservation Division - Artesia, NM
Bureau of Land Management - Carlsbad, NM

T
19
S



Scale in Feet

1000 0 1000 2000 3000 4000

Submit to Appropriate
District Office
State Lease - 4 copies
Fee Lease - 3 copies

State of New Mexico
Energy, Minerals and Natural Resources Department

Form C-102
Revised 1-1-89

OIL CONSERVATION DIVISION

P.O. Box 2088

Santa Fe, New Mexico 87504-2088

DISTRICT I

P.O. Box 1980, Hobbs, NM 88240

DISTRICT II

P.O. Drawer DD, Artesia, NM 88210

DISTRICT III

1000 Rio Brazos Rd., Artesia, NM 87410

WELL LOCATION AND ACREAGE DEDICATION PLAT

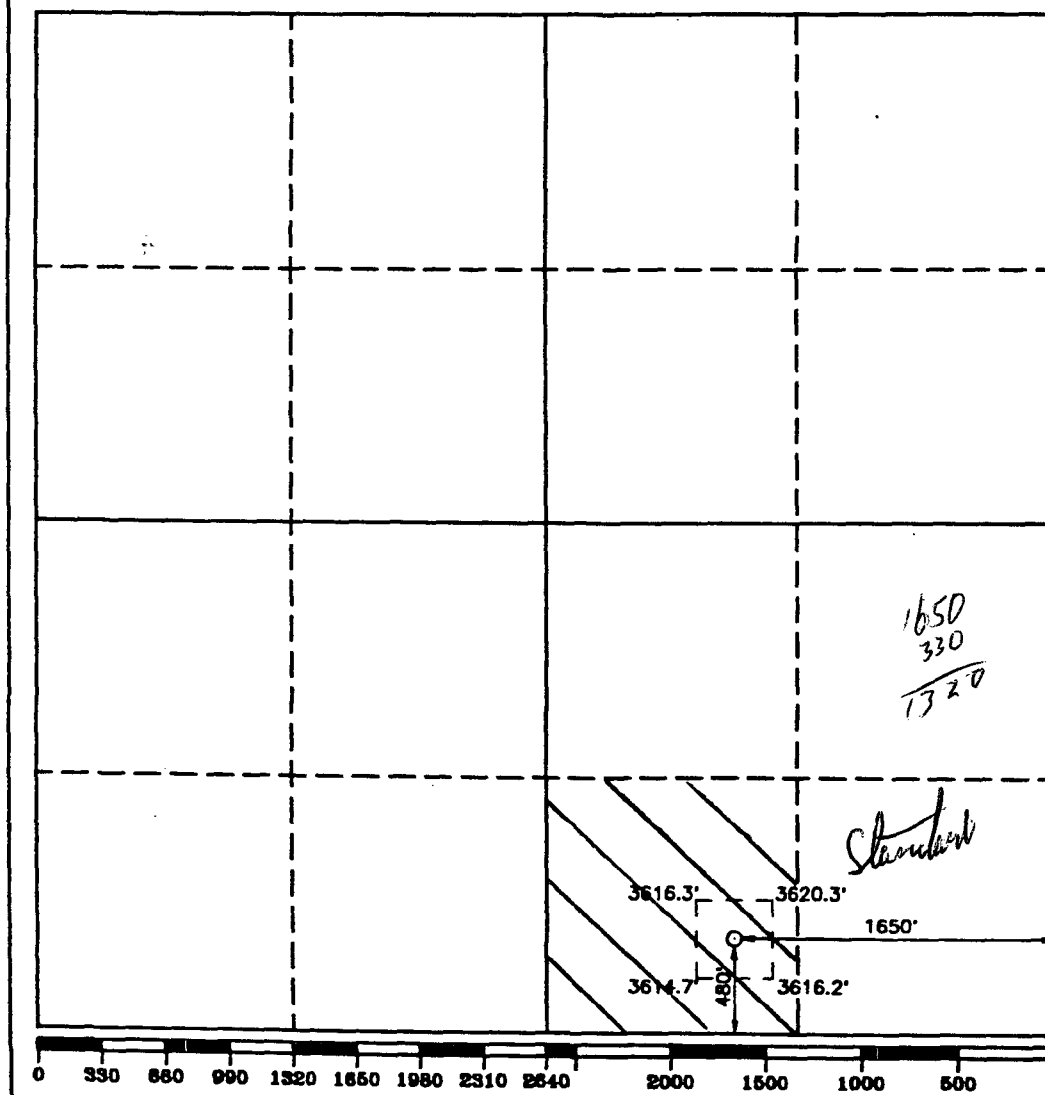
All Distances must be from the outer boundaries of the section

Operator DEVON ENERGY CORPORATION			Lease EAST SHUGART UNIT		Well No. 46
Unit Letter 0	Section 34	Township 18 SOUTH	Range 31 EAST	County NMPM	EDDY
Actual Footage Location of Well:					
480 feet from the SOUTH line and		1650 feet from the EAST line			
Ground Level Elev. 3616.3'	Producing Formation Queen Sand		Pool Shugart (Y-SR-Q-G)		Dedicated Acreage: 40 Acres

1. Outline the acreage dedicated to the subject well by colored pencil or hatchure marks on the plat below.
2. If more than one lease is dedicated to the well, outline each and identify the ownership thereof (both as to working interest and royalty).
3. If more than one lease of different ownership is dedicated to the well, have the interest of all owners been consolidated by communitization, unitization, force-pooling, etc.?
☐ Yes ☐ No If answer is "yes" type of consolidation _____

If answer is "no" list of owners and tract descriptions which have actually been consolidated. (Use reverse side of this form necessary.)

No allowable will be assigned to the well unit all interests have been consolidated (by communitization, unitization, forced-pooling, otherwise) or until a non-standard unit, eliminating such interest, has been approved by the Division.



OPERATOR CERTIFICATION

I hereby certify the the information contained herein is true and complete to the best of my knowledge and belief.

Signature

Printed Name

Randy Jackson

Position

District Engineer

Company Devon Energy Corporation (Nevada)

Date

12/21/93

SURVEYOR CERTIFICATION

I hereby certify that the well location shown on this plat was plotted from field notes of actual surveys made by me or under my supervision, and that the same is true and correct to the best of my knowledge and belief.

Date Surveyed

NOVEMBER 18, 1993

Signature & Seal of Professional Surveyor

GARY L. JONES
NEW MEXICO
1987
Certificate No. JOHN W. WEBB 878
RONALD J. ELLISON 2230
GARY L. JONES 7977
93-11-2259

Submit to Appropriate
District Office
State Lease - 4 copies
Fee Lease - 3 copies

State of New Mexico
Energy, Minerals and Natural Resources Department

Form C-102
Revised 1-1-89

OIL CONSERVATION DIVISION

P.O. Box 2088

Santa Fe, New Mexico 87504-2088

DISTRICT I

P.O. Box 1980, Hobbs, NM 88240

DISTRICT II

P.O. Drawer DD, Artesia, NM 88210

DISTRICT III

1000 Rio Brazos Rd., Aztec, NM 87410

WELL LOCATION AND ACREAGE DEDICATION PLAT

All Distances must be from the outer boundaries of the section

Operator DEVON ENERGY CORPORATION			Lease EAST SHUGART UNIT		Well No. 50
Unit Letter G	Section 35	Township 18 SOUTH	Range 31 EAST	NMPM	County EDDY

Actual Footage Location of Well:

1700 feet from the NORTH line and	2335 feet from the EAST line
Ground Level Elev. 3641'	Producing Formation Queen Sand
Pool Shugart (Y-SR-Q-G)	Dedicated Acreage: 40 Acres

1. Outline the acreage dedicated to the subject well by colored pencil or hatchure marks on the plat below.
2. If more than one lease is dedicated to the well, outline each and identify the ownership thereof (both as to working interest and royalty).
3. If more than one lease of different ownership is dedicated to the well, have the interest of all owners been consolidated by communitization, unitization, force-pooling, etc.?
☐ Yes ☐ No If answer is "yes" type of consolidation _____

If answer is "no" list of owners and tract descriptions which have actually been consolidated. (Use reverse side of this form necessary.)

No allowable will be assigned to the well unit all interests have been consolidated (by communitization, unitization, forced-pooling, otherwise) or until a non-standard unit, eliminating such interest, has been approved by the Division.

OPERATOR CERTIFICATION

I hereby certify the the information contained herein is true and complete to the best of my knowledge and belief.

Signature

E. L. Buttross, Jr.

Printed Name

E. L. Buttross, Jr.

Position

District Engineer

Company Devon Energy Corporation (Nevada)

Date

3/11/94

SURVEYOR CERTIFICATION

I hereby certify that the well location shown on this plat was plotted from field notes of actual surveys made by me or under my supervision, and that the same is true and correct to the best of my knowledge and belief.

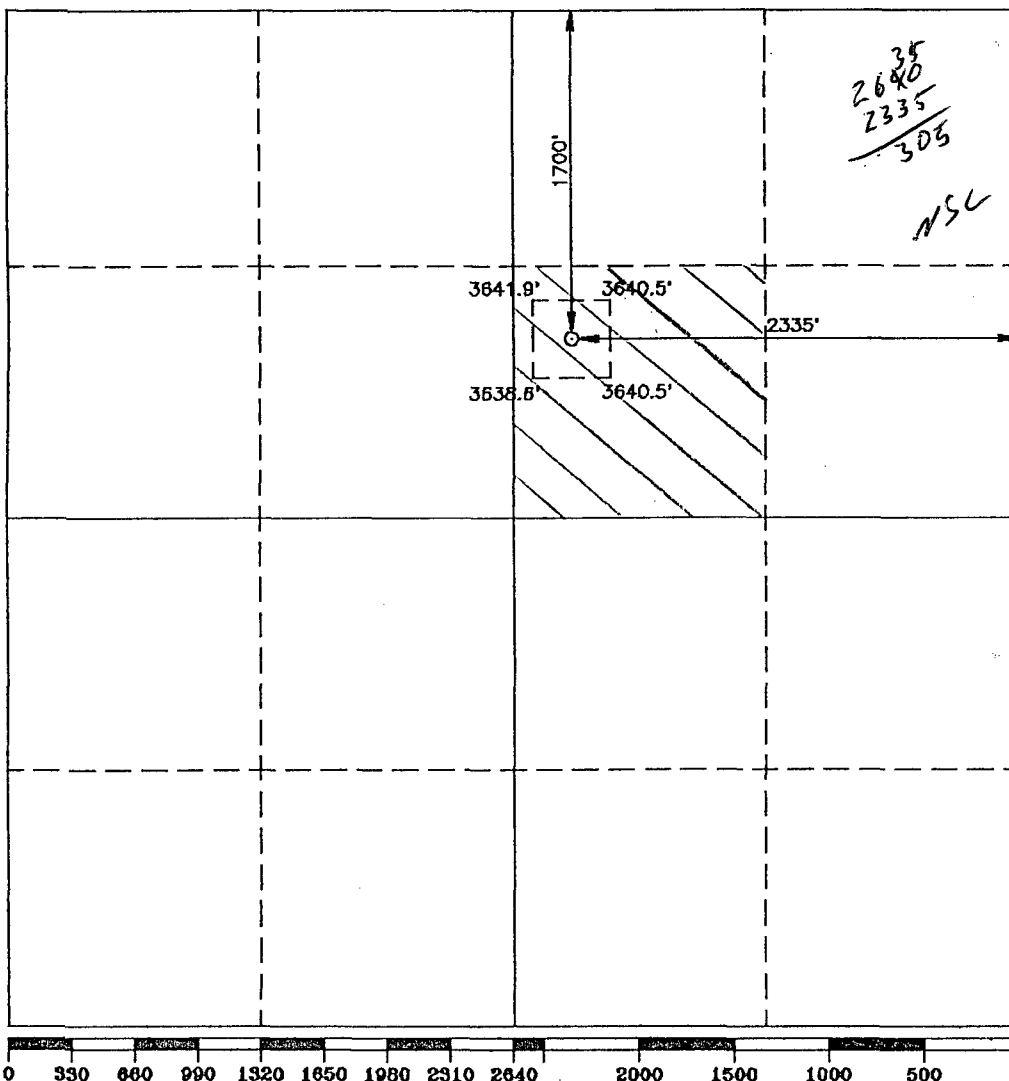
Date Surveyed

JANUARY 28, 1994

Signature & Seal of Professional Surveyor

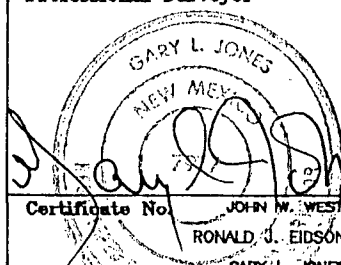
GARY L. JONES
NEW MEXICO
7977
Certificate No. JOHN W. WEST, 676
RONALD J. EIDSON, 3239
GARY L. JONES, 7977

94-11-0191



1000 Edo Bronson Rd., Aztec, NM 87410

All Distances must be from the outer boundaries of the section

Operator DEVON ENERGY CORPORATION			Lease EAST SHUGART UNIT		Well No. 52
Unit Letter B	Section 35	Township 18 SOUTH	Range 31 EAST NMPM		County EDDY
Actual Footage Location of Well: <div style="display: flex; justify-content: space-between;"><div>290 feet from the NORTH line and</div><div>2230 feet from the EAST line</div></div>					
Ground Level Elev. 3646'	Producing Formation Queen Sand		Pool Shugart (Y-SR-Q-G)		Dedicated Acreage: 40 Acres
<p>1. Outline the acreage dedicated to the subject well by colored pencil or hatchure marks on the plat below.</p> <p>2. If more than one lease is dedicated to the well, outline each and identify the ownership thereof (both as to working interest and royalty).</p> <p>3. If more than one lease of different ownership is dedicated to the well, have the interest of all owners been consolidated by communitization, unitization, force-pooling, etc.?</p> <div style="display: flex; align-items: center;"><div><input type="checkbox"/> Yes <input type="checkbox"/> No</div><div style="margin-left: 20px;">If answer is "yes" type of consolidation _____</div></div> <p>If answer is "no" list of owners and tract descriptions which have actually been consolidated. (Use reverse side of this form necessary.)</p> <p>No allowable will be assigned to the well unit all interests have been consolidated (by communitization, unitization, forced-pooling, otherwise) or until a non-standard unit, eliminating such interest, has been approved by the Division.</p>					
<div style="border: 1px solid black; height: 400px; position: relative;"><div style="position: absolute; top: 10%; left: 30%; border: 1px solid black; width: 100px; height: 100px; transform: rotate(45deg); background: repeating-linear-gradient(45deg, transparent, transparent 2px, black 2px, black 4px);"></div><div style="position: absolute; top: 10%; left: 30%; transform: rotate(45deg); font-size: 10px;">3645.6'</div><div style="position: absolute; top: 10%; left: 45%; transform: rotate(45deg); font-size: 10px;">3645.4'</div><div style="position: absolute; top: 10%; left: 55%; font-size: 10px;">2230'</div><div style="position: absolute; top: 35%; left: 30%; transform: rotate(45deg); font-size: 10px;">3644.3'</div><div style="position: absolute; top: 35%; left: 45%; transform: rotate(45deg); font-size: 10px;">3646.8'</div><div style="position: absolute; top: 40%; left: 60%; font-size: 20px;">NSU</div></div>			OPERATOR CERTIFICATION		
			I hereby certify the the information contained herein is true and complete to the best of my knowledge and belief.		
			Signature <i>E. L. Buttross Jr.</i>		
			Printed Name E. L. Buttross, Jr.		
			Position District Engineer		
			Company Devon Energy Corporation (Nevada)		
			Date 3/11/94		
			SURVEYOR CERTIFICATION		
			I hereby certify that the well location shown on this plat was plotted from field notes of actual surveys made by me or under my supervision and that the same is true and correct to the best of my knowledge and belief.		
			Date Surveyed JANUARY 28, 1994		
			Signature & Seal of Professional Surveyor		
			<div style="text-align: center;"> <i>Gary L. Jones</i></div>		
			Certificate No. JOHN W. WEST, 676 RONALD J. EIDSON, 3238 GARY L. JONES, 797		
<div style="display: flex; justify-content: space-between;"><div>0 330 660 990 1320 1650 1980 2310 2640</div><div>2000 1500 1000 500 0</div></div>					

Submit to Appropriate
District Office
State Lease - 4 copies
Fee Lease - 3 copies

State of New Mexico
Energy, Minerals and Natural Resources Department

Form C-102
Revised 1-1-89

OIL CONSERVATION DIVISION

P.O. Box 2088

Santa Fe, New Mexico 87504-2088

DISTRICT I

P.O. Box 1880, Hobbs, NM 88240

DISTRICT II

P.O. Drawer DD, Artesia, NM 88810

DISTRICT III

1000 Rio Brazos Rd., Aztec, NM 87410

WELL LOCATION AND ACREAGE DEDICATION PLAT

All Distances must be from the outer boundaries of the section

Operator DEVON ENERGY CORPORATION			Lease EAST SHUGART UNIT		Well No. 53
Unit Letter A	Section 35	Township 18 SOUTH	Range 31 EAST NMPM	County EDDY	
Actual Footage Location of Well:					
330 feet from the NORTH line and		1100 feet from the EAST line			
Ground Level Elev. 3648'	Producing Formation Queen Sand	Pool Shugart (Y-SR-Q-G)	Dedicated Acreage: 40 Acres		
<p>1. Outline the acreage dedicated to the subject well by colored pencil or hatchure marks on the plat below.</p> <p>2. If more than one lease is dedicated to the well, outline each and identify the ownership thereof (both as to working interest and royalty).</p> <p>3. If more than one lease of different ownership is dedicated to the well, have the interest of all owners been consolidated by communitization, unitization, force-pooling, etc.?</p> <p><input type="checkbox"/> Yes <input type="checkbox"/> No If answer is "yes" type of consolidation _____</p> <p>If answer is "no" list of owners and tract descriptions which have actually been consolidated. (Use reverse side of this form necessary.)</p> <p>No allowable will be assigned to the well unit all interests have been consolidated (by communitization, unitization, forced-pooling, otherwise) or until a non-standard unit, eliminating such interest, has been approved by the Division.</p>					

OPERATOR CERTIFICATION

I hereby certify the the information
contained herein to be true and complete to the
best of my knowledge and belief.

Signature

E. L. Buttross Jr.

Printed Name

E. L. Buttross, Jr.

Position

District Engineer

Company Devon Energy
Corporation (Nevada)

Date

3/11/94

SURVEYOR CERTIFICATION

I hereby certify that the well location shown
on this plat was plotted from field notes of
actual surveys made by me or under my
supervision, and that the same is true and
correct to the best of my knowledge and
belief.

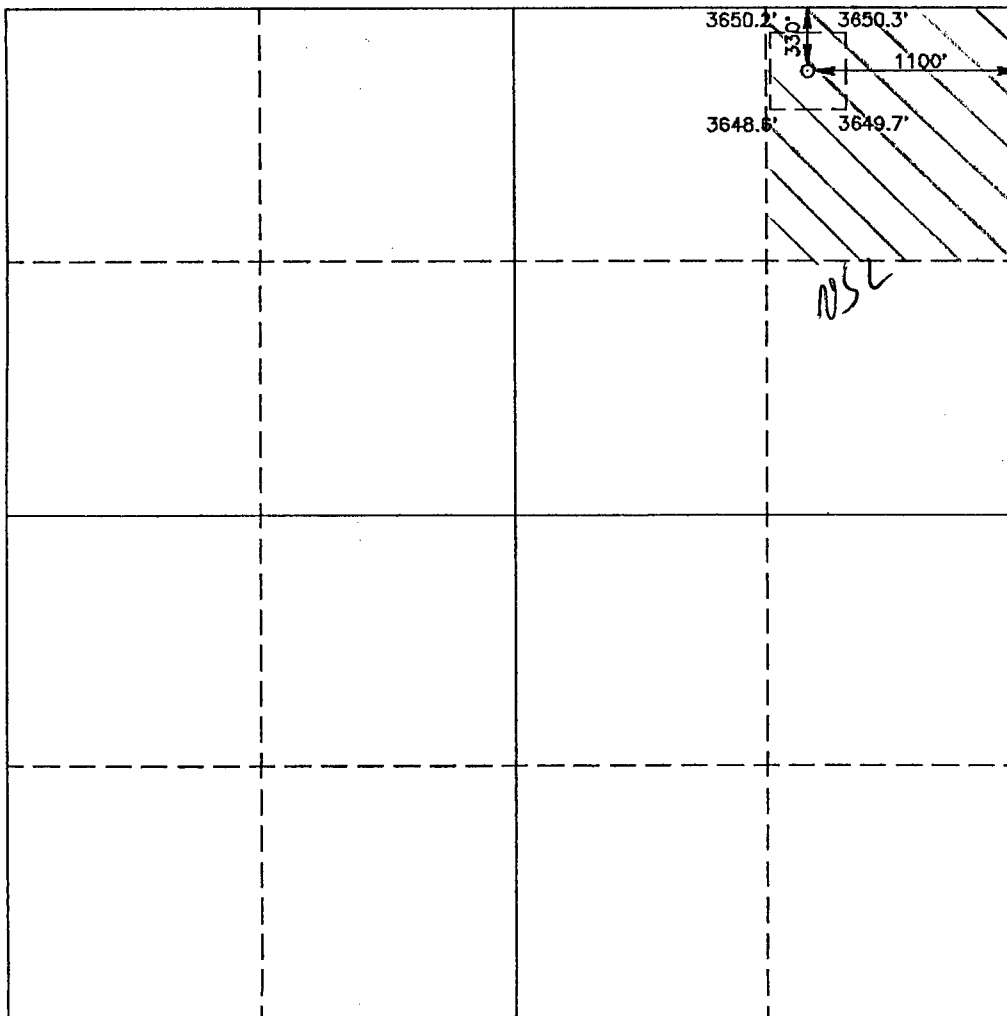
Date Surveyed

JANUARY 28, 1994

Signature of Surveyor
Professional Surveyor

Garrett Jones
NEW MEXICO
7877
RECEIVED
JAN 28 1994
Certificate No. JOHN W. WEST, 678
EDISON, 3239
GARY L. JONES, 7977

94-11-0210



0 330 660 990 1320 1650 1980 2310 2640 2000 1500 1000 500 0

Submit to Appropriate
District Office
State Lease - 4 copies
Fee Lease - 3 copies

State of New Mexico
Energy, Minerals and Natural Resources Department

Form C-102
Revised 1-1-89

OIL CONSERVATION DIVISION

P.O. Box 2088

Santa Fe, New Mexico 87504-2088

DISTRICT I

P.O. Box 1980, Hobbs, NM 88240

DISTRICT II

P.O. Drawer DD, Artesia, NM 88810

DISTRICT III

1000 Rio Brazos Rd., Aztec, NM 87410

WELL LOCATION AND ACREAGE DEDICATION PLAT

All Distances must be from the outer boundaries of the section

Operator DEVON ENERGY CORPORATION			Lease EAST SHUGART UNIT		Well No. 54
Unit Letter F	Section 34	Township 18 SOUTH	Range 31 EAST	County EDDY	

Actual Footage Location of Well:

1690 feet from the NORTH line and		1940 feet from the WEST line	
Ground Level Elev. 3630'	Producing Formation Queen Sand	Pool Shugart (Y-SR-Q-G)	Dedicated Acreage: 40 Acres

- Outline the acreage dedicated to the subject well by colored pencil or hatchure marks on the plat below.
- If more than one lease is dedicated to the well, outline each and identify the ownership thereof (both as to working interest and royalty).
- If more than one lease of different ownership is dedicated to the well, have the interest of all owners been consolidated by communitization, unitization, force-pooling, etc.?

☐ Yes
 ☐ No

If answer is "yes" type of consolidation _____

If answer is "no" list of owners and tract descriptions which have actually been consolidated. (Use reverse side of this form necessary.)

No allowable will be assigned to the well unit all interests have been consolidated (by communitization, unitization, forced-pooling, otherwise) or until a non-standard unit, eliminating such interest, has been approved by the Division.

OPERATOR CERTIFICATION

I hereby certify the the information contained herein is true and complete to the best of my knowledge and belief.

Signature
E. L. Buttross Jr.

Printed Name
E. L. Buttross, Jr.

Position
District Engineer

Company **Devon Energy Corporation (Nevada)**

Date
3/11/94

SURVEYOR CERTIFICATION

I hereby certify that the well location shown on this plat was plotted from field notes of actual surveys made by me or under my supervision, and that the same is true and correct to the best of my knowledge and belief.

Date Surveyed
JANUARY 28, 1994

Signature & Seal of Professional Surveyor

Certificate No. **JOHN W. WEST 676**
RONALD J. EDSON 3239
GARY L. JONES 7977

OIL CONSERVATION DIVISION

P.O. Box 2088
Santa Fe, New Mexico 87504-2088

DISTRICT I

P.O. Box 1980, Hobbs, NM 88240

DISTRICT II

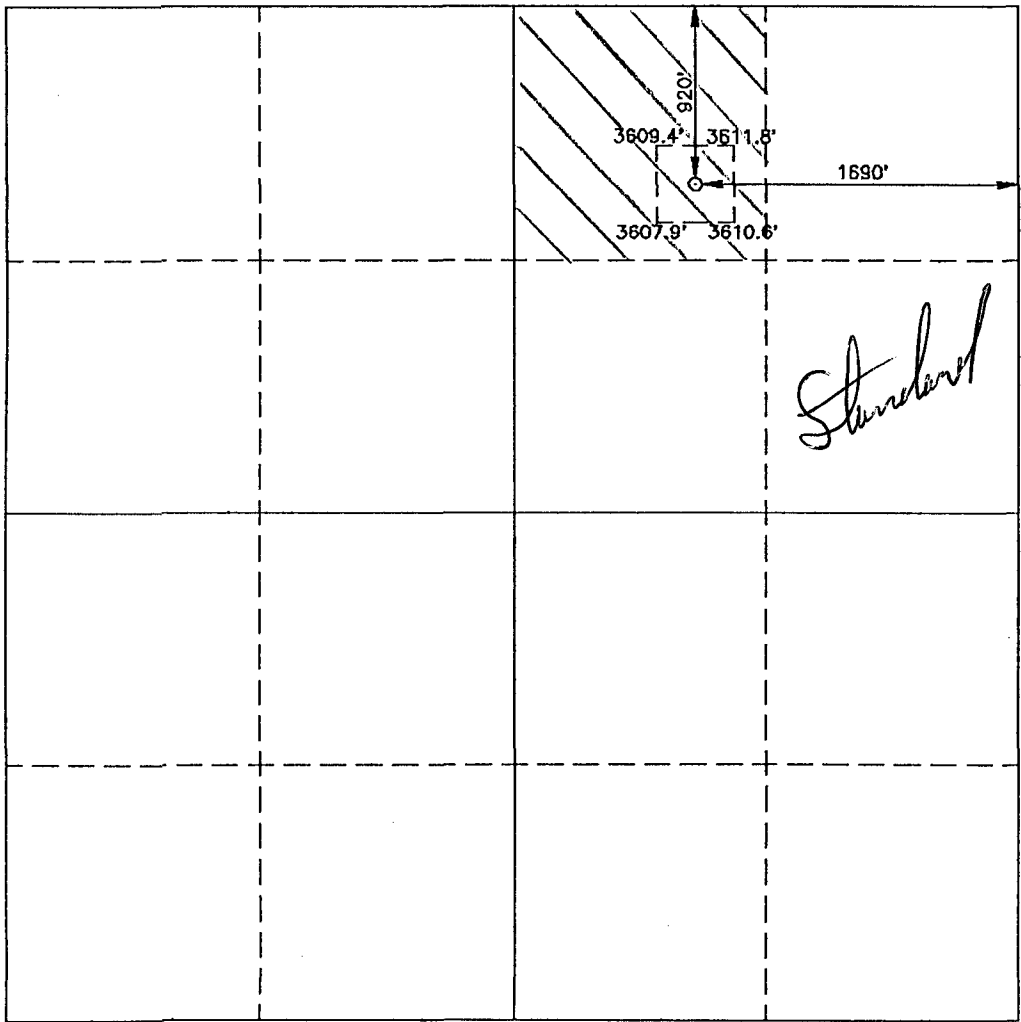
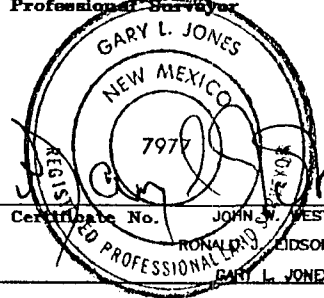
P.O. Drawer DD, Artesia, NM 88210

DISTRICT III

1000 Rio Brazos Rd., Aztec, NM 87410

WELL LOCATION AND ACREAGE DEDICATION PLAT

All Distances must be from the outer boundaries of the section

Operator DEVON ENERGY CORPORATION			Lease EAST SHUGART UNIT		Well No. 55
Unit Letter B	Section 3	Township 19 SOUTH	Range 31 EAST NMPM	County EDDY	
Actual Footage Location of Well:					
920 feet from the NORTH line and		1690 feet from the EAST line			
Ground Level Elev. 3610'	Producing Formation Queen Sand		Pool Shugart (Y-SR-Q-G)	Dedicated Acreage: 40 Acres	
<p>1. Outline the acreage dedicated to the subject well by colored pencil or hatchure marks on the plat below.</p> <p>2. If more than one lease is dedicated to the well, outline each and identify the ownership thereof (both as to working interest and royalty).</p> <p>3. If more than one lease of different ownership is dedicated to the well, have the interest of all owners been consolidated by communitization, unitization, force-pooling, etc.?</p> <p><input type="checkbox"/> Yes <input type="checkbox"/> No If answer is "yes" type of consolidation _____</p> <p>If answer is "no" list of owners and tract descriptions which have actually been consolidated. (Use reverse side of this form necessary.)</p> <p>No allowable will be assigned to the well unit all interests have been consolidated (by communitization, unitization, forced-pooling, otherwise) or until a non-standard unit, eliminating such interest, has been approved by the Division.</p>					
				OPERATOR CERTIFICATION I hereby certify the the information contained herein is true and complete to the best of my knowledge and belief. Signature <i>E. L. Buttross Jr.</i> Printed Name E. L. Buttross, Jr. Position District Engineer Company Devon Energy Corporation (Nevada) Date 3/11/94	
				SURVEYOR CERTIFICATION I hereby certify that the well location shown on this plat was plotted from field notes of actual surveys made by me or under my supervision and that the same is true and correct to the best of my knowledge and belief. Date Surveyed JANUARY 28, 1994 Signature & Seal of Professional Surveyor  Certificate No. JOHN W. WEST, 676 RONALD L. JEDSON, 3239 GARY L. JONES, 7977 94-11-0195	

Submit to Appropriate
District Office
State Lease - 4 copies
Fee Lease - 3 copies

State of New Mexico
Energy, Minerals and Natural Resources Department

Form C-102
Revised 1-1-89

OIL CONSERVATION DIVISION

P.O. Box 2088
Santa Fe, New Mexico 87504-2088

DISTRICT I

P.O. Box 1980, Hobbs, NM 88240

DISTRICT II

P.O. Drawer DD, Artesia, NM 88210

DISTRICT III

1000 Rio Brazos Rd., Artec, NM 87410

WELL LOCATION AND ACREAGE DEDICATION PLAT

All Distances must be from the outer boundaries of the section

Operator DEVON ENERGY CORPORATION			Lease EAST SHUGART UNIT		Well No. 56
Unit Letter G	Section 35	Township 18 SOUTH	Range 31 EAST NMPM	County EDDY	
Actual Footage Location of Well:					
2250 feet from the NORTH line and		1910 feet from the EAST line			
Ground Level Elev. 3642'	Producing Formation Queen Sand		Pool Shugart (Y-SR-Q-G)		Dedicated Acreage: 40 Acres
<p>1. Outline the acreage dedicated to the subject well by colored pencil or hatchure marks on the plat below.</p> <p>2. If more than one lease is dedicated to the well, outline each and identify the ownership thereof (both as to working interest and royalty).</p> <p>3. If more than one lease of different ownership is dedicated to the well, have the interest of all owners been consolidated by communitization, unitization, force-pooling, etc.?</p> <p><input type="checkbox"/> Yes <input type="checkbox"/> No If answer is "yes" type of consolidation _____</p> <p>If answer is "no" list of owners and tract descriptions which have actually been consolidated. (Use reverse side of this form necessary.)</p> <p>No allowable will be assigned to the well unit all interests have been consolidated (by communitization, unitization, forced-pooling, otherwise) or until a non-standard unit, eliminating such interest, has been approved by the Division.</p>					
					<p>OPERATOR CERTIFICATION</p> <p>I hereby certify that the information contained herein is true and complete to the best of my knowledge and belief.</p>
					<p>Signature <i>E. L. Buttross, Jr.</i></p> <p>Printed Name E. L. Buttross, Jr.</p> <p>Position District Engineer</p> <p>Company Devon Energy Corporation (Nevada)</p> <p>Date 3/11/94</p>
					<p>SURVEYOR CERTIFICATION</p> <p>I hereby certify that the well location shown on this plat was plotted from field notes of actual surveys made by me or under my supervision, and that the same is true and correct to the best of my knowledge and belief.</p>
					<p>Date Surveyed JANUARY 28, 1994</p> <p>Signature & Seal of Professional Surveyor </p> <p>Certificate No. JOHN W. WEST, 878 RONALD L. EIDSON, 3239 GARY L. JONES, 7977</p> <p>94-11-0196</p>

Submit to Appropriate
District Office
State Lease - 4 copies
Fee Lease - 3 copies

State of New Mexico
Energy, Minerals and Natural Resources Department

Form C-102
Revised 1-1-89

OIL CONSERVATION DIVISION

DISTRICT I
P.O. Box 1980, Hobbs, NM 88240

P.O. Box 2088

Santa Fe, New Mexico 87504-2088

DISTRICT II
P.O. Drawer DD, Artesia, NM 88210

DISTRICT III
1000 Elc Brazos Rd., Aztec, NM 87410

WELL LOCATION AND ACREAGE DEDICATION PLAT

All Distances must be from the outer boundaries of the section

Operator DEVON ENERGY CORPORATION			Lease EAST SHUGART UNIT		Well No. 57
Unit Letter N	Section 35	Township 18 SOUTH	Range 31 EAST	County NMPM	EDDY
Actual Footage Location of Well:					
375 feet from the SOUTH line and		1950 feet from the WEST line			
Ground Level Elev. 3626'	Producing Formation Queen Sand	Pool Shugart (Y-SR-Q-G)	Dedicated Acreage: 40 Acres		

1. Outline the acreage dedicated to the subject well by colored pencil or hatchure marks on the plat below.
2. If more than one lease is dedicated to the well, outline each and identify the ownership thereof (both as to working interest and royalty).
3. If more than one lease of different ownership is dedicated to the well, have the interest of all owners been consolidated by communitization, unitization, force-pooling, etc.?

☐ Yes☐ No

If answer is "yes" type of consolidation _____

If answer is "no" list of owners and tract descriptions which have actually been consolidated. (Use reverse side of this form necessary.)

No allowable will be assigned to the well unit all interests have been consolidated (by communitization, unitization, forced-pooling, otherwise) or until a non-standard unit, eliminating such interest, has been approved by the Division.

OPERATOR CERTIFICATION

I hereby certify the the information contained herein is true and complete to the best of my knowledge and belief.

Signature

E. L. Buttross, Jr.

Printed Name

E. L. Buttross, Jr.

Position

District Engineer
Company Devon Energy
Corporation (Nevada)

Date

3/11/94

SURVEYOR CERTIFICATION

I hereby certify that the well location shown on this plat was plotted from field notes of actual surveys made by me or under my supervision, and that the same is true and correct to the best of my knowledge and belief.

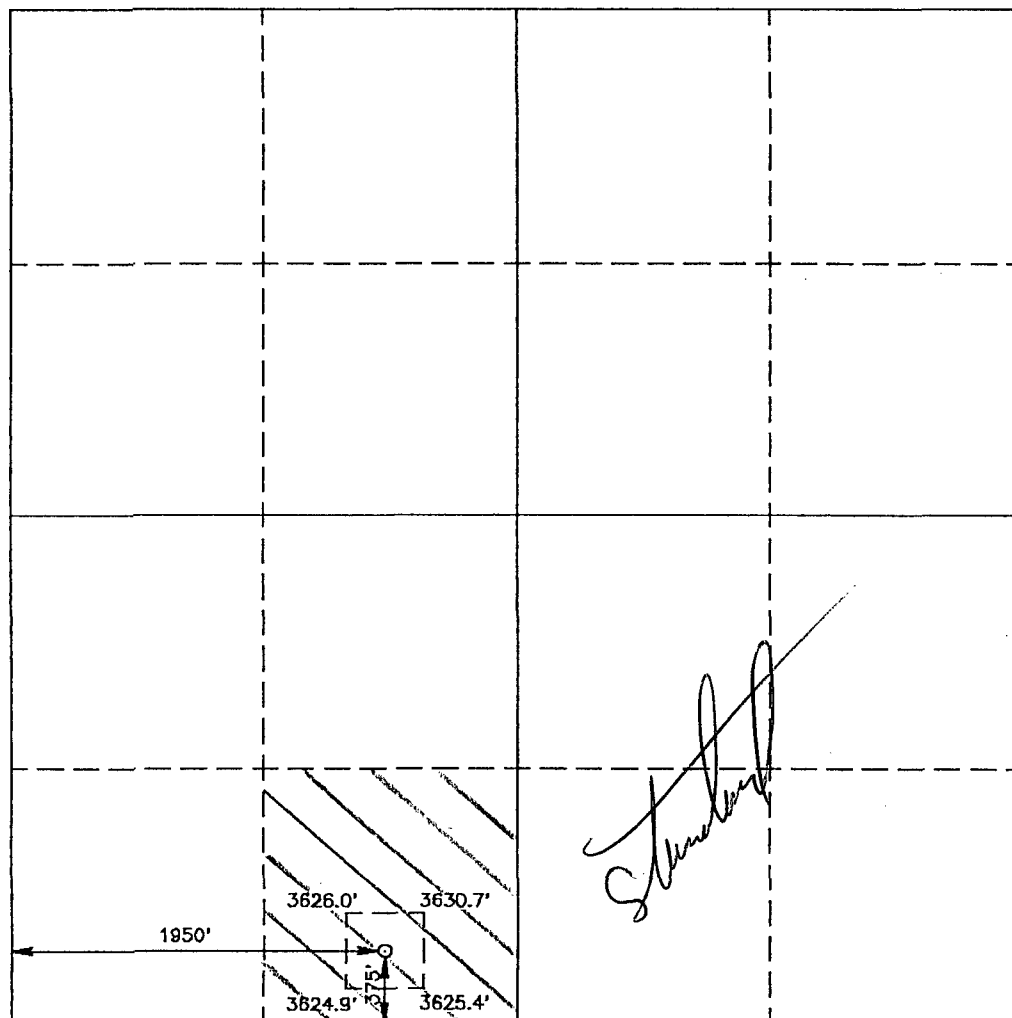
Date Surveyed

JANUARY 28, 1994

Signature & Seal of Professional Surveyor

GARY L. JONES
NEW MEXICO
7977
Certificate No. 7977
WEST, 576
EDSON, 3239
GARY L. JONES, 7977

94-11-0197



0 330 660 990 1320 1650 1980 2310 2640 2000 1500 1000 500 0

Submit to Appropriate
District Office
State Lease - 4 copies
Fee Lease - 3 copies

State of New Mexico
Energy, Minerals and Natural Resources Department

Form C-102
Revised 1-1-89

OIL CONSERVATION DIVISION

P.O. Box 2088

Santa Fe, New Mexico 87504-2088

DISTRICT I

P.O. Box 1980, Hobbs, NM 88240

DISTRICT II

P.O. Drawer DD, Artesia, NM 88210

DISTRICT III

1000 Rio Brazos Rd., Artesia, NM 87410

WELL LOCATION AND ACREAGE DEDICATION PLAT

All Distances must be from the outer boundaries of the section

Operator DEVON ENERGY CORPORATION			Lease EAST SHUGART UNIT		Well No. 58
Unit Letter K	Section 35	Township 18 SOUTH	Range 31 EAST NMPM	County EDDY	
Actual Footage Location of Well:					
1575 feet from the SOUTH line and		2200 feet from the WEST line			
Ground Level Elev. 3632'	Producing Formation Queen Sand		Pool Shugart (Y-SR-Q-G)		Dedicated Acreage: 40 Acres

- Outline the acreage dedicated to the subject well by colored pencil or hachure marks on the plat below.
- If more than one lease is dedicated to the well, outline each and identify the ownership thereof (both as to working interest and royalty).
- If more than one lease of different ownership is dedicated to the well, have the interest of all owners been consolidated by communitization, unitization, force-pooling, etc.?

☐ Yes ☐ No If answer is "yes" type of consolidation _____

If answer is "no" list of owners and tract descriptions which have actually been consolidated. (Use reverse side of this form necessary.) _____

No allowable will be assigned to the well unit all interests have been consolidated (by communitization, unitization, forced-pooling, otherwise) or until a non-standard unit, eliminating such interest, has been approved by the Division.

OPERATOR CERTIFICATION

I hereby certify the the information contained herein is true and complete to the best of my knowledge and belief.

Signature

E. L. Buttross, Jr.

Printed Name

E. L. Buttross, Jr.

Position

District Engineer

Company Devon Energy Corporation (Nevada)

Date

3/11/94

SURVEYOR CERTIFICATION

I hereby certify that the well location shown on this plat was plotted from field notes of actual surveys made by me or under my supervision, and that the same is true and correct to the best of my knowledge and belief.

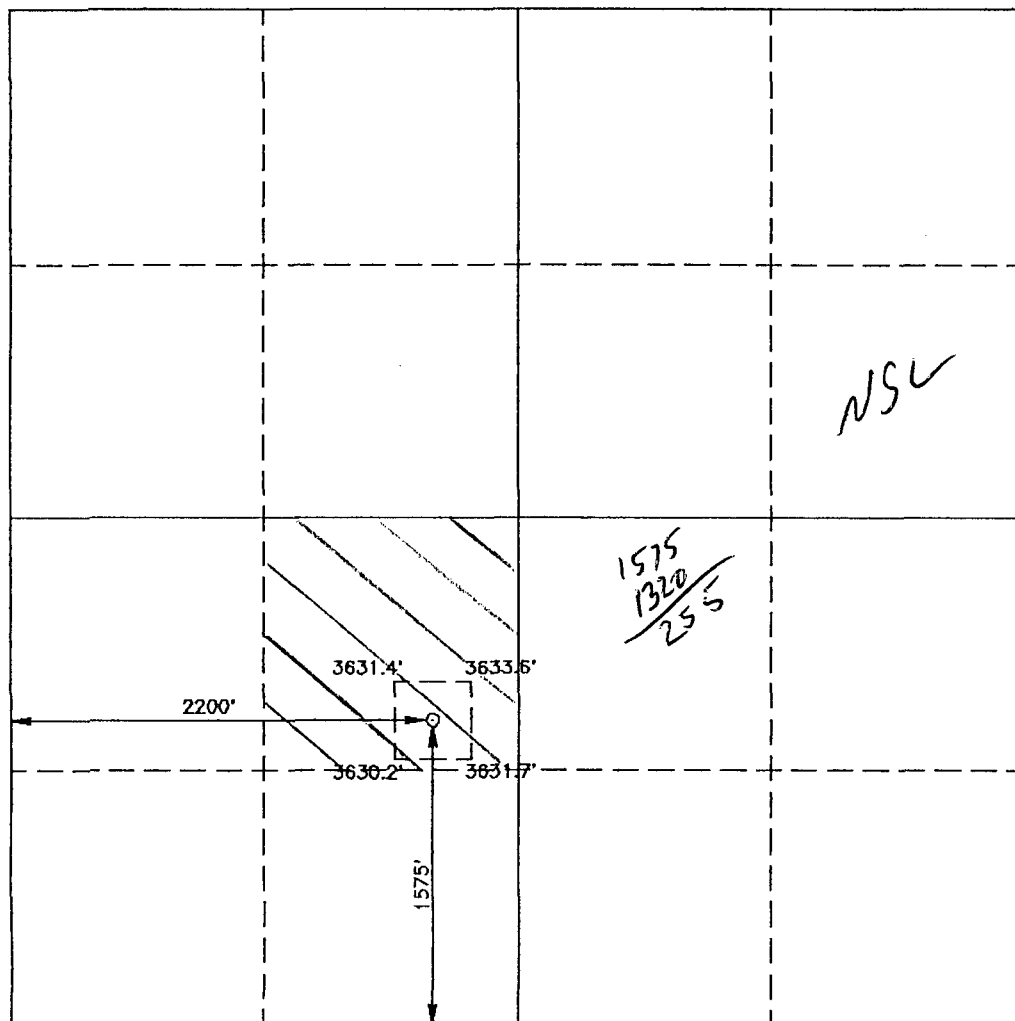
Date Surveyed

JANUARY 28, 1994

Signature & Seal of Professional Surveyor

GARY L. JONES
NEW MEXICO
7977
Certificate No. JOHN W. WEST, 878
RONALD J. EDSON, 3239
GARY L. JONES, 7977

94-11-0198



0 330 660 990 1320 1650 1980 2310 2640 2000 1500 1000 500 0

Submit to Appropriate
District Office
State Lease - 4 copies
Fee Lease - 3 copies

State of New Mexico
Energy, Minerals and Natural Resources Department

Form C-102
Revised 1-1-89

OIL CONSERVATION DIVISION

P.O. Box 2088

Santa Fe, New Mexico 87504-2088

DISTRICT I

P.O. Box 1980, Hobbs, NM 88240

DISTRICT II

P.O. Drawer DD, Artesia, NM 88210

DISTRICT III

1000 Rio Brazos Rd., Aztec, NM 87410

WELL LOCATION AND ACREAGE DEDICATION PLAT

All Distances must be from the outer boundaries of the section

Operator DEVON ENERGY CORPORATION			Lease EAST SHUGART UNIT		Well No. 59
Unit Letter N	Section 34	Township 18 SOUTH	Range 31 EAST	County NMPM	EDDY
Actual Footage Location of Well: SOUTH 1100 feet from the NORTH line and 1650 feet from the WEST line					
Ground Level Elev. 3612'	Producing Formation Queen Sand		Pool Shugart (Y-SR-Q-G)	Dedicated Acreage: 40 Acres	

1. Outline the acreage dedicated to the subject well by colored pencil or hatchure marks on the plat below.
2. If more than one lease is dedicated to the well, outline each and identify the ownership thereof (both as to working interest and royalty).
3. If more than one lease of different ownership is dedicated to the well, have the interest of all owners been consolidated by communitization, unitization, force-pooling, etc.?
☐ Yes ☐ No If answer is "yes" type of consolidation _____

If answer is "no" list of owners and tract descriptions which have actually been consolidated. (Use reverse side of this form necessary.)

No allowable will be assigned to the well unit all interests have been consolidated (by communitization, unitization, forced-pooling, otherwise) or until a non-standard unit, eliminating such interest, has been approved by the Division.

OPERATOR CERTIFICATION

I hereby certify the the information contained herein is true and complete to the best of my knowledge and belief.

Signature

E. L. Buttross Jr.

Printed Name

E. L. Buttross, Jr.

Position

District Engineer

Company Devon Energy Corporation (Nevada)

Date

3/11/94

SURVEYOR CERTIFICATION

I hereby certify that the well location shown on this plat was plotted from field notes of actual surveys made by me or under my supervision, and that the same is true and correct to the best of my knowledge and belief.

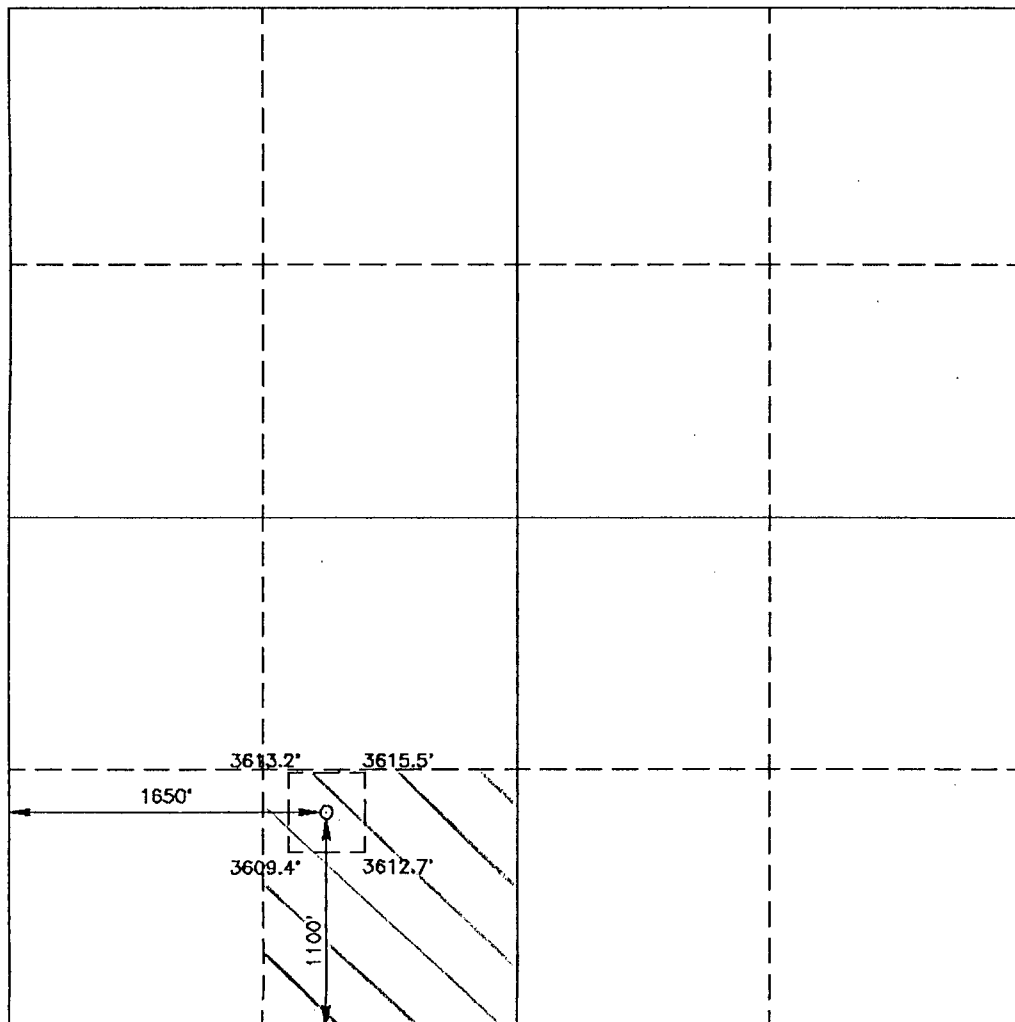
Date Surveyed

JANUARY 28, 1994

Signature & Seal of Professional Surveyor

NEW MEXICO
7977
REGISTERED PROFESSIONAL SURVEYOR
RONALD J. EIDSON, 3239
CARY L. JONES, 7977

94-11-0194C



Submit to Appropriate
District Office
State Lease - 4 copies
Fee Lease - 3 copies

State of New Mexico
Energy, Minerals and Natural Resources Department

Form C-102
Revised 1-1-89

OIL CONSERVATION DIVISION

DISTRICT I
P.O. Box 1980, Hobbs, NM 88240

P.O. Box 2088

Santa Fe, New Mexico 87504-2088

DISTRICT II
P.O. Drawer DD, Artesia, NM 88210

DISTRICT III
1000 Rio Brazos Rd., Artec, NM 87410

WELL LOCATION AND ACREAGE DEDICATION PLAT

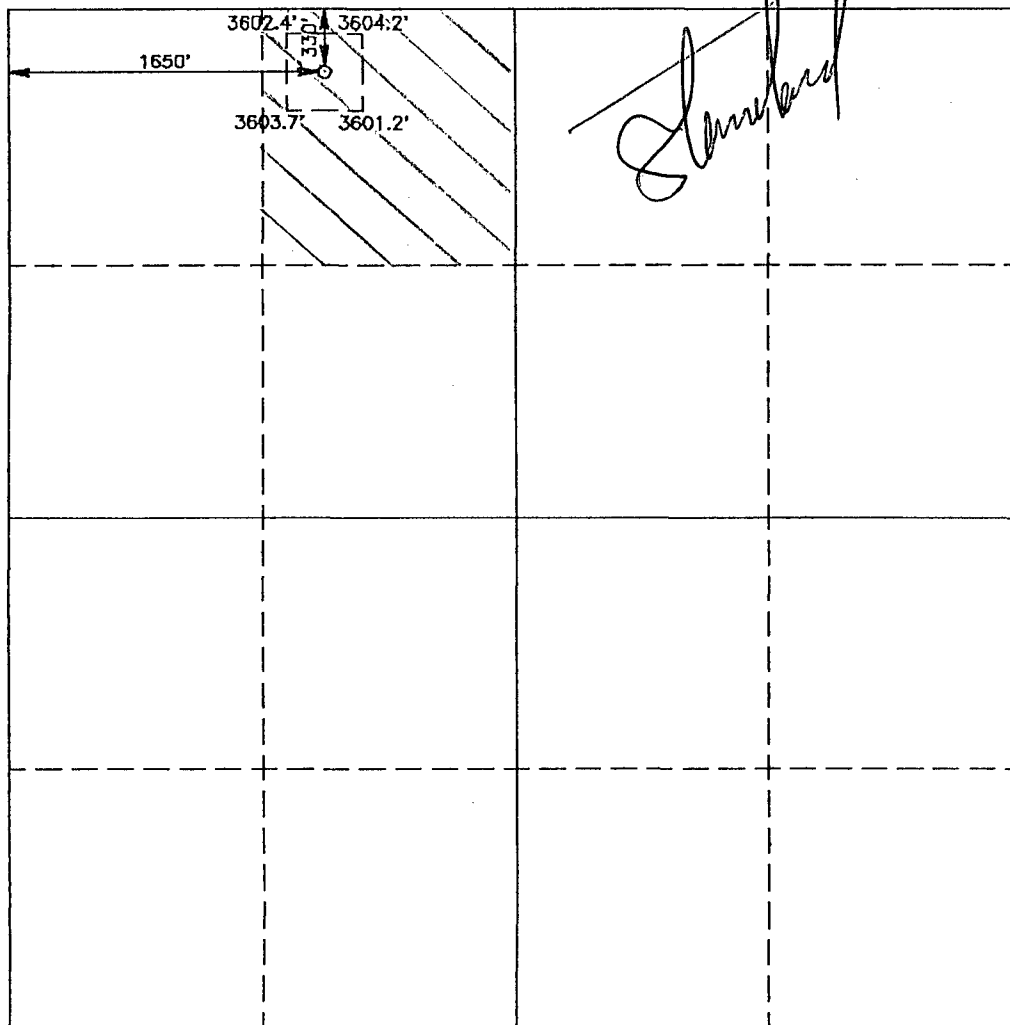
All Distances must be from the outer boundaries of the section

Operator DEVON ENERGY CORPORATION			Lease EAST SHUGART UNIT		Well No. 60
Unit Letter C	Section 3	Township 19 SOUTH	Range 31 EAST	County NMPM	EDDY
Actual Footage Location of Well:					
330 feet from the NORTH line and		1650 feet from the WEST line			
Ground Level Elev. 3602'	Producing Formation Queen Sand	Pool Shugart (Y-SR-Q-G)			Dedicated Acreage: 40 Acres

1. Outline the acreage dedicated to the subject well by colored pencil or hachure marks on the plat below.
2. If more than one lease is dedicated to the well, outline each and identify the ownership thereof (both as to working interest and royalty).
3. If more than one lease of different ownership is dedicated to the well, have the interest of all owners been consolidated by communization, unitization, force-pooling, etc.?
☐ Yes ☐ No If answer is "yes" type of consolidation _____

If answer is "no" list of owners and tract descriptions which have actually been consolidated. (Use reverse side of this form necessary.)

No allowable will be assigned to the well unit all interests have been consolidated (by communization, unitization, forced-pooling, otherwise) or until a non-standard unit, eliminating such interest, has been approved by the Division.



OPERATOR CERTIFICATION

I hereby certify the the information contained herein is true and complete to the best of my knowledge and belief.

Signature
E. L. Buttross Jr.

Printed Name
E. L. Buttross, Jr

Position
District Engineer
Company Devon Energy Corporation (Nevada)

Date
3/11/94

SURVEYOR CERTIFICATION

I hereby certify that the well location shown on this plat was plotted from field notes of actual surveys made by me or under my supervision, and that the same is true and correct to the best of my knowledge and belief.

Date Surveyed
JANUARY 28, 1994

Signature & Seal of Professional Surveyor
GARY L. JONES
NEW MEXICO
1977
Certification No. JOHN W. WEST 676
RONALD J. BROWN, 3239
GARY L. JONES, 7977

94-11-0195B

Submit to Appropriate
District Office
State Lease - 4 copies
Fee Lease - 3 copies

State of New Mexico
Energy, Minerals and Natural Resources Department

Form C-102
Revised 1-1-89

OIL CONSERVATION DIVISION

P.O. Box 2088
Santa Fe, New Mexico 87504-2088

DISTRICT I

P.O. Box 1980, Hobbs, NM 88240

DISTRICT II

P.O. Drawer DD, Artesia, NM 88210

DISTRICT III

1000 Rio Brazos Rd., Artesia, NM 87410

WELL LOCATION AND ACREAGE DEDICATION PLAT

All Distances must be from the outer boundaries of the section

Operator DEVON ENERGY CORPORATION			Lease EAST SHUGART UNIT		Well No. 61
Unit Letter H	Section 35	Township 18 SOUTH	Range 31 EAST	County EDDY	
Actual Footage Location of Well:					
2550 feet from the NORTH line and		865 feet from the EAST line			
Ground Level Elev. 3643'	Producing Formation Queen Sand	Pool Shugart (Y-SR-Q-G)		Dedicated Acreage: 40 Acres	

1. Outline the acreage dedicated to the subject well by colored pencil or hatchure marks on the plat below.

2. If more than one lease is dedicated to the well, outline each and identify the ownership thereof (both as to working interest and royalty).

3. If more than one lease of different ownership is dedicated to the well, have the interest of all owners been consolidated by communitization, unitization, force-pooling, etc.?

☐ Yes ☐ No If answer is "yes" type of consolidation _____

If answer is "no" list of owners and tract descriptions which have actually been consolidated. (Use reverse side of this form necessary.) _____

No allowable will be assigned to the well unit all interests have been consolidated (by communitization, unitization, forced-pooling, otherwise) or until a non-standard unit, eliminating such interest, has been approved by the Division.

OPERATOR CERTIFICATION

I hereby certify the the information contained herein is true and complete to the best of my knowledge and belief.

Signature
E. L. Buttross Jr.

Printed Name
E. L. Buttross, Jr.

Position
District Engineer

Company
Devon Energy Corporation (Nevada)

Date
3/11/94

SURVEYOR CERTIFICATION

I hereby certify that the well location shown on this plat was plotted from field notes of actual surveys made by me or under my supervision, and that the same is true and correct to the best of my knowledge and belief.

Date Surveyed
JANUARY 28, 1994

Signature & Seal of Professional Surveyor

Certificate No. **JOHN W. WEST, 676**
RONALD J. EDSON, 3239
GARY L. JONES, 7977

94-11-0201

Submit to Appropriate
District Office
State Lease - 4 copies
Fee Lease - 3 copies

State of New Mexico
Energy, Minerals and Natural Resources Department

Form C-102
Revised 1-1-89

OIL CONSERVATION DIVISION

P.O. Box 2088

Santa Fe, New Mexico 87504-2088

DISTRICT I

P.O. Box 1900, Hobbs, NM 88240

DISTRICT II

P.O. Drawer DD, Artesia, NM 88210

DISTRICT III

1000 Rio Brazos Rd., Aztec, NM 87410

WELL LOCATION AND ACREAGE DEDICATION PLAT

All Distances must be from the outer boundaries of the section

Operator DEVON ENERGY CORPORATION			Lease EAST SHUGART UNIT		Well No. 62
Unit Letter G	Section 3	Township 19 SOUTH	Range 31 EAST NMPM	County EDDY	

Actual Footage Location of Well:

1750 feet from the NORTH line and 1900 feet from the EAST line

Ground Level Elev. 3605'	Producing Formation Queen Sand	Pool Shugart (Y-SR-Q-G)	Dedicated Acreage: 40 Acres
-----------------------------	-----------------------------------	----------------------------	--------------------------------

- Outline the acreage dedicated to the subject well by colored pencil or hatchure marks on the plat below.
- If more than one lease is dedicated to the well, outline each and identify the ownership thereof (both as to working interest and royalty).
- If more than one lease of different ownership is dedicated to the well, have the interest of all owners been consolidated by communitization, unitization, force-pooling, etc.?

☐ Yes ☐ No If answer is "yes" type of consolidation _____

If answer is "no" list of owners and tract descriptions which have actually been consolidated. (Use reverse side of this form necessary.)

No allowable will be assigned to the well unit all interests have been consolidated (by communitization, unitization, forced-pooling, otherwise) or until a non-standard unit, eliminating such interest, has been approved by the Division.

OPERATOR CERTIFICATION

I hereby certify the the information contained herein to be true and complete to the best of my knowledge and belief.

Signature
E. L. Buttross, Jr.

Printed Name
E. L. Buttross, Jr.

Position
District Engineer

Company
Devon Energy Corporation (Nevada)

Date
3/11/94

SURVEYOR CERTIFICATION

I hereby certify that the well location shown on this plat was plotted from field notes of actual surveys made by me or under my supervision, and that the same is true and correct to the best of my knowledge and belief.

Date Surveyed
JANUARY 28, 1994

Signature & Seal of Professional Surveyor
Gary L. Jones

GARY L. JONES
NEW MEXICO
7977

Certificate No. JOHN W. WEST, 576
RONALD J. EIDSON, 3238
GARY L. JONES, 7977

94-11-0195D

Submit to Appropriate
District Office
State Lease - 4 copies
Fee Lease - 3 copies

State of New Mexico
Energy, Minerals and Natural Resources Department

Form C-102
Revised 1-1-89

OIL CONSERVATION DIVISION

P.O. Box 2088

Santa Fe, New Mexico 87504-2088

DISTRICT I

P.O. Box 1980, Hobbs, NM 88240

DISTRICT II

P.O. Drawer DD, Artesia, NM 88210

DISTRICT III

1000 Rio Brazos Rd., Aztec, NM 87410

WELL LOCATION AND ACREAGE DEDICATION PLAT

All Distances must be from the outer boundaries of the section

Operator DEVON ENERGY CORPORATION			Lease EAST SHUGART UNIT		Well No. 64
Unit Letter F	Section 3	Township 19 SOUTH	Range 31 EAST NMPM	County EDDY	

Actual Footage Location of Well:

1660 feet from the NORTH line and 1600 feet from the WEST line

Ground Level Elev. 3602'	Producing Formation Queen Sand	Pool Shugart (Y-SR-Q-G)	Dedicated Acreage: 40 Acres
-----------------------------	-----------------------------------	----------------------------	--------------------------------

- Outline the acreage dedicated to the subject well by colored pencil or hatchure marks on the plat below.
- If more than one lease is dedicated to the well, outline each and identify the ownership thereof (both as to working interest and royalty).
- If more than one lease of different ownership is dedicated to the well, have the interest of all owners been consolidated by communitization, unitization, force-pooling, etc.?

☐ Yes ☐ No If answer is "yes" type of consolidation _____

If answer is "no" list of owners and tract descriptions which have actually been consolidated. (Use reverse side of this form necessary.)

No allowable will be assigned to the well unit all interests have been consolidated (by communitization, unitization, forced-pooling, otherwise) or until a non-standard unit, eliminating such interest, has been approved by the Division.

OPERATOR CERTIFICATION

I hereby certify the the information contained herein is true and complete to the best of my knowledge and belief.

Signature
E. L. Buttross Jr.

Printed Name
E. L. Buttross, Jr.

Position
District Engineer

Company
Devon Energy Corporation (Nevada)

Date
3/11/94

SURVEYOR CERTIFICATION

I hereby certify that the well location shown on this plat was plotted from field notes of actual surveys made by me or under my supervision, and that the same is true and correct to the best of my knowledge and belief.

Date Surveyed
JANUARY 28, 1994

Signatures & Seal of Professional Surveyor

Certificate No. JOHN WEST, 676
EDSON, 3239
GARY L. JONES, 7977

94-11-0195C

Submit to Appropriate
District Office
State Lease - 4 copies
Fee Lease - 3 copies

State of New Mexico
Energy, Minerals and Natural Resources Department

Form C-102
Revised 1-1-89

OIL CONSERVATION DIVISION

P.O. Box 2088

Santa Fe, New Mexico 87504-2088

DISTRICT I

P.O. Box 1880, Hobbs, NM 88240

DISTRICT II

P.O. Drawer DD, Artesia, NM 88210

DISTRICT III

1000 Rio Brazos Rd., Aztec, NM 87410

WELL LOCATION AND ACREAGE DEDICATION PLAT

All Distances must be from the outer boundaries of the section

Operator DEVON ENERGY CORPORATION			Lease EAST SHUGART UNIT		Well No. 66
Unit Letter L	Section 34	Township 18 SOUTH	Range 31 EAST NMPM	County EDDY	

Actual Footage Location of Well:

2300 feet from the SOUTH line and		425 feet from the WEST line	
Ground Level Elev. 3619'	Producing Formation Queen Sand	Pool Shugart (Y-SR-Q-G)	Dedicated Acreage: 40 Acres

1. Outline the acreage dedicated to the subject well by colored pencil or hatchure marks on the plat below.
2. If more than one lease is dedicated to the well, outline each and identify the ownership thereof (both as to working interest and royalty).
3. If more than one lease of different ownership is dedicated to the well, have the interest of all owners been consolidated by communitization, unitization, force-pooling, etc.?
☐ Yes ☐ No If answer is "yes" type of consolidation _____

If answer is "no" list of owners and tract descriptions which have actually been consolidated. (Use reverse side of this form necessary.)

No allowable will be assigned to the well unit all interests have been consolidated (by communitization, unitization, forced-pooling, otherwise) or until a non-standard unit, eliminating such interest, has been approved by the Division.

OPERATOR CERTIFICATION

I hereby certify the the information contained herein is true and complete to the best of my knowledge and belief.

Signature

E. L. Buttross, Jr.

Printed Name

E. L. Buttross, Jr.

Position

District Engineer

Company Devon Energy Corporation (Nevada)

Date

3/11/94

SURVEYOR CERTIFICATION

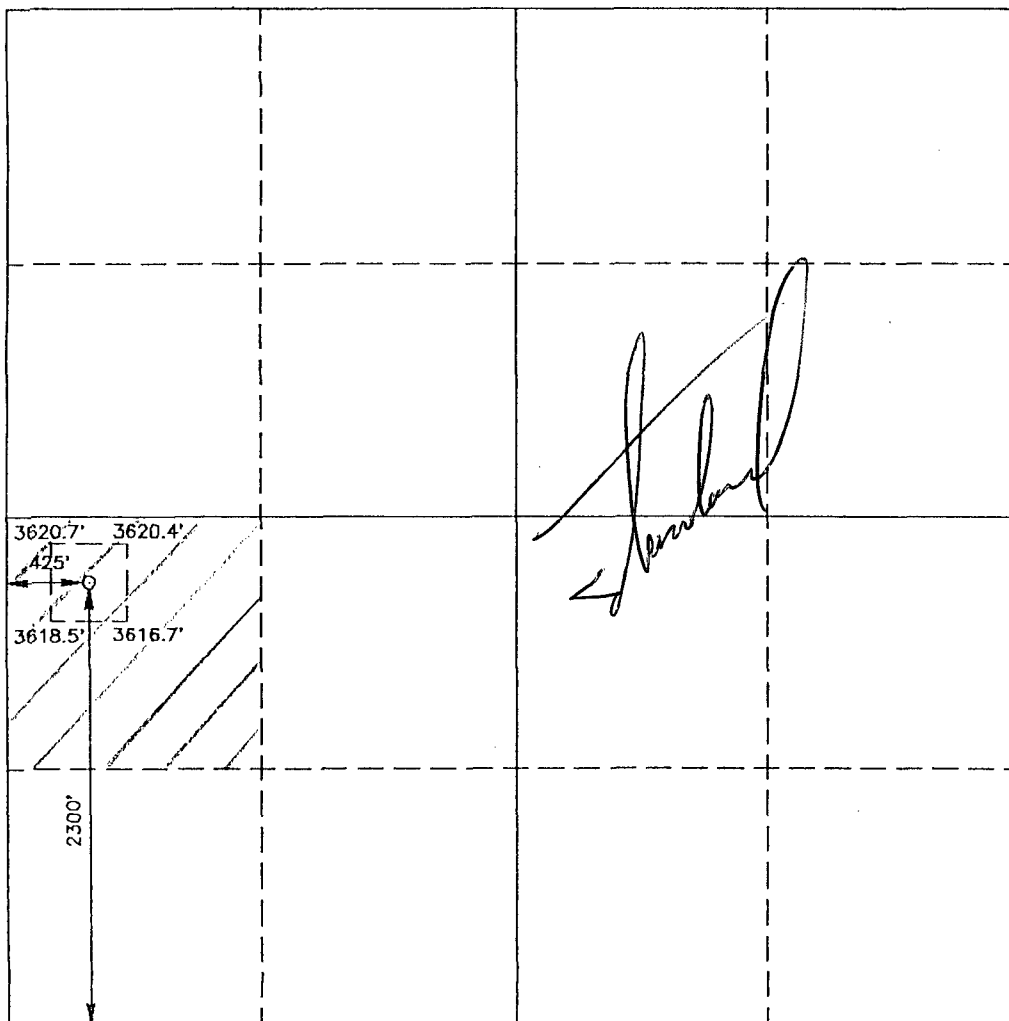
I hereby certify that the well location shown on this plat was plotted from field notes of actual surveys made by me or under my supervision, and that the same is true and correct to the best of my knowledge and belief.

Date Surveyed

JANUARY 28, 1994

Signature & Seal of Professional Surveyor

GARY L. JONES
NEW MEXICO
702
Certificate No. JOHN W. WEST, 676
RONALD J. EIDSON, 3238
GARY L. JONES, 7977
84-11-0194B



0 330 660 990 1320 1650 1980 2310 2640 2000 1600 1000 500 0

Submit to Appropriate
District Office
State Lease - 4 copies
Fee Lease - 3 copies

State of New Mexico
Energy, Minerals and Natural Resources Department

Form C-102
Revised 1-1-89

OIL CONSERVATION DIVISION

DISTRICT I
P.O. Box 1980, Hobbs, NM 88240

P.O. Box 2088
Santa Fe, New Mexico 87504-2088

DISTRICT II
P.O. Drawer DD, Artesia, NM 88210

DISTRICT III
1000 Rio Brazos Ed., Aztec, NM 87410

WELL LOCATION AND ACREAGE DEDICATION PLAT

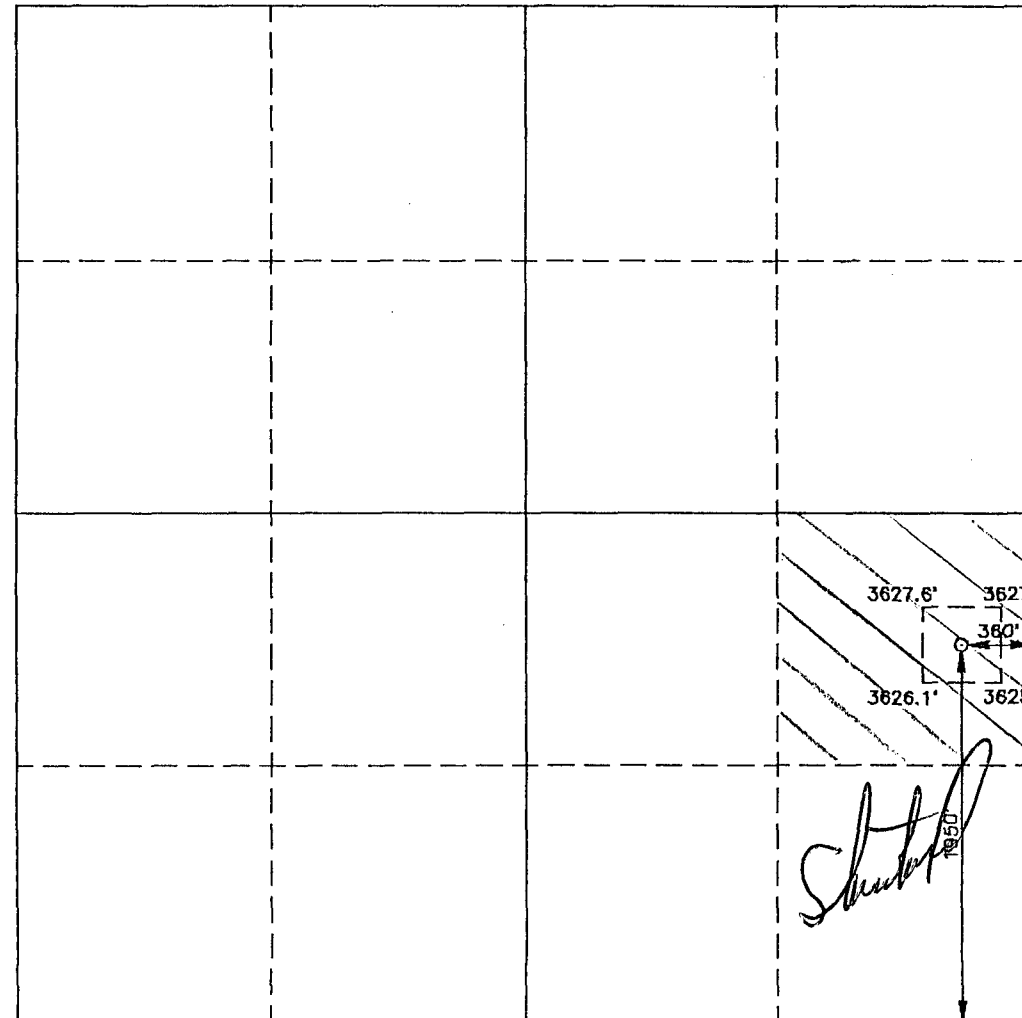
All Distances must be from the outer boundaries of the section

Operator DEVON ENERGY			Lease EAST SHUGART UNIT		Well No. 67
Unit Letter I	Section 34	Township 18 SOUTH	Range 31 EAST NMPM	County EDDY	
Actual Footage Location of Well:					
1950 feet from the SOUTH line and		360 feet from the EAST line			
Ground Level Elev. 3629'	Producing Formation Queen Sand	Pool Shugart (Y-SR-Q-G)	Dedicated Acreage: 40 Acres		

1. Outline the acreage dedicated to the subject well by colored pencil or hatchure marks on the plat below.
2. If more than one lease is dedicated to the well, outline each and identify the ownership thereof (both as to working interest and royalty).
3. If more than one lease of different ownership is dedicated to the well, have the interest of all owners been consolidated by communization, unitization, force-pooling, etc.?
☐ Yes ☐ No If answer is "yes" type of consolidation _____

If answer is "no" list of owners and tract descriptions which have actually been consolidated. (Use reverse side of this form necessary.)

No allowable will be assigned to the well unit all interests have been consolidated (by communization, unitization, forced-pooling, otherwise) or until a non-standard unit, eliminating such interest, has been approved by the Division.



OPERATOR CERTIFICATION

I hereby certify the the information contained herein is true and complete to the best of my knowledge and belief.

Signature
E. L. Buttross Jr.
Printed Name
E. L. Buttross, Jr.
Position
District Engineer
Company Devon Energy Corporation (Nevada)
Date
3/11/94

SURVEYOR CERTIFICATION

I hereby certify that the well location shown on this plat was plotted from field notes of actual surveys made by me or under my supervision and that the same is true and correct to the best of my knowledge and belief.

Date Surveyed
JANUARY 28, 1994
Signature & Seal of Professional Surveyor
Gary L. Jones
Certificate No. JOHN W. WEST, 676
RONALD J. EIDSON, 3239
GARY L. JONES, 7977

0 330 660 990 1320 1650 1980 2310 2640 2000 1500 1000 500 0

94-11-0192



ENERGY CORPORATION

20 North Broadway, Suite 1500
Oklahoma City, Oklahoma 73102-8260

Telephone 405/235-3611
FAX 405/552-4550

June 29, 1994

Certified Mail No. P 005 347 034

Amoco Producing Company
P.O. Box 3092
Houston, TX 77253

RE: East Shugart Unit #50, 52, 54, 56, 57, 58, 67
Eddy County, NM
Non-Standard Location Approval

Gentlemen:

We have applied for permits to drill the above referenced wells. These unorthodox locations were due to pipelines in the area. The proposed wellsites are within our East Shugart Unit in Eddy County and offset the following properties which our records show you operate.

Greenwood #1
Greenwood #2
Greenwood #13

The East Shugart wells are as follows in Eddy County, NM.

ESU No.	Unit	Section-T-R	Footage Location
50	G	35-18S-31E	1700' FNL & 2335' FEL
52	B	35-18S-31E	290' FNL & 2230' FEL
54	F	34-18S-31E	1690' FNL & 1940' FWL
56	G	35-18S-31E	2250' FNL & 1910' FEL
57	N	35-18S-31E	375' FSL & 1950' FWL
58	K	35-18S-31E	1575' FSL & 2200' FWL
67	I	34-18S-31E	1950' FSL & 360' FEL

East Shugart Unit #50, 52, 54, 56, 57, 58, 67
Non-Standard Location Approval
June 29, 1994
Page Two

The NMOCD Non-Standard Location Approval process requires that we notify offset operators and submit Proof of Notice.

Please accept this certified letter as notification. If you have any questions, please contact Ernie Buttross, Jr., at (405) 235-3611, X4509.

Sincerely yours,

DEVON ENERGY CORPORATION (NEVADA)

A handwritten signature in cursive script that reads "Candace R. Graham".

Ms. Candace R. Graham
Engineering Tech.

/cg

cc: Oil Conservation Division - Santa Fe, NM
Oil Conservation Division - Artesia, NM
Bureau of Land Management - Carlsbad, NM



ENERGY CORPORATION

20 North Broadway, Suite 1500
Oklahoma City, Oklahoma 73102-8260

Telephone 405/235-3611
FAX 405/552-4550

June 29, 1994

Certified Mail No. P 005 347 035

Jack Plemons
1010 West Avenue H
Lovington, NM 88260

RE: East Shugart Unit #46, 51, 55, 62
Eddy County, NM
Non-Standard Location Approval

Gentlemen:

We have applied for permits to drill the above referenced wells. These unorthodox locations were due to pipelines in the area. The proposed wellsites are within our East Shugart Unit in Eddy County and offset the following properties which our records show you operate.

McFadden Federal #1
McFadden Federal #2
McFadden Federal #3
McFadden Federal #4
McFadden Federal #5Y
McFadden Federal #6
McFadden Federal #7
McFadden Federal #8

The East Shugart wells are located as follows in Eddy County, NM.

ESU No.	Unit	Section-T-R	Footage Location
46	O	34-18S-31E	480' FSL & 1650' FEL
51	P	34-18S-31E	550' FSL & 200' FEL
55	B	3-19S-31E	920' FNL & 1690' FEL
62	G	3-19S-31E	1750' FNL & 1900' FEL

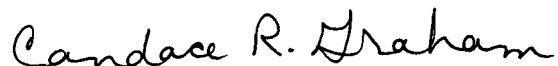
East Shugart Unit #46, 51, 55, 62
Non-Standard Location Approval
June 29, 1994
Page Two

The NMOCD Non-Standard Location Approval process requires that we notify offset operators and submit Proof of Notice.

Please accept this certified letter as notification. If you have any questions, please contact Ernie Buttross, Jr., at (405) 235-3611, X4509.

Sincerely yours,

DEVON ENERGY CORPORATION (NEVADA)

A handwritten signature in cursive script that reads "Candace R. Graham".

Ms. Candace R. Graham
Engineering Tech.

/cg

cc: Oil Conservation Division - Santa Fe, NM
Oil Conservation Division - Artesia, NM
Bureau of Land Management - Carlsbad, NM



ENERGY CORPORATION

20 North Broadway, Suite 1500
Oklahoma City, Oklahoma 73102-8260

Telephone 405/235-3611
FAX 405/552-4550

June 29, 1994

Certified Mail No. P 005 347 036

Enerloc Resources Inc.
616 Mechem Drive
Ruidoso, NM 88340

Attention: Tom Boyd

RE: East Shugart Unit #53, 61
Eddy County, NM
Non-Standard Location Approval

Gentlemen:

We have applied for permits to drill the above referenced wells. These unorthodox locations were due to pipelines in the area. The proposed wellsites are within our East Shugart Unit in Eddy County and offset the following properties which our records show you operate.

Federal #1
State #1

The East Shugart wells are as follows in Eddy County, NM.

ESU No.	Unit	Section-T-R	Footage Location
53	A	35-18S-31E	330' FNL & 1100' FEL
61	H	35-18S-31E	2550' FNL & 865' FEL

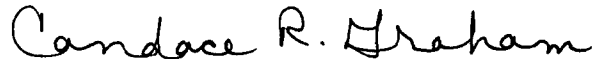
The NMOCD Non-Standard Location Approval process requires that we notify offset operators and submit Proof of Notice.

East Shugart Unit #53, 61
Non-Standard Location Approval
June 29, 1994
Page Two

Please accept this certified letter as notification. If you have any questions, please contact Ernie Buttross, Jr., at (405) 235-3611, X4509.

Sincerely yours,

DEVON ENERGY CORPORATION (NEVADA)

A handwritten signature in cursive script that reads "Candace R. Graham".

Ms. Candace R. Graham
Engineering Tech.

/cg

cc: Oil Conservation Division - Santa Fe, NM
Oil Conservation Division - Artesia, NM
Bureau of Land Management - Carlsbad, NM



ENERGY CORPORATION

20 North Broadway, Suite 1500
Oklahoma City, Oklahoma 73102-8260

Telephone 405/235-3611
FAX 405/552-4550

June 29, 1994

Certified Mail No. P 005 347 037

Marathon Oil Company
Post Office Box 552
Midland, TX 79702

Attention: Joe Madron

RE: East Shugart Unit #66
Eddy County, NM
Non-Standard Location Approval

Gentlemen:

We have applied for a permit to drill the above referenced well. This unorthodox location was due to pipelines in the area. The proposed wellsite is within our East Shugart Unit in Eddy County and offsets the following property which our records show you operate.

Koehane-Federal #1

The East Shugart Unit #66 is located as follows.

Unit L Sec. 34-18S-31E 2300' FSL & 425' FWL Eddy County, NM

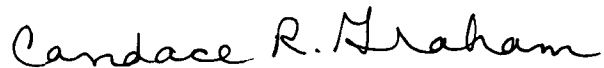
The NMOCD Non-Standard Location Approval process requires that we notify offset operators and submit Proof of Notice.

East Shugart Unit #66
Non-Standard Location Approval
June 29, 1994
Page Two

Please accept this certified letter as notification. If you have any questions, please contact Ernie Buttross, Jr., at (405) 235-3611, X4509.

Sincerely yours,

DEVON ENERGY CORPORATION (NEVADA)

A handwritten signature in cursive script that reads "Candace R. Graham".

Ms. Candace R. Graham
Engineering Tech.

/cg

cc: Oil Conservation Division - Santa Fe, NM
Oil Conservation Division - Artesia, NM
Bureau of Land Management - Carlsbad, NM



ENERGY CORPORATION

20 North Broadway, Suite 1500
Oklahoma City, Oklahoma 73102-8260

Telephone 405/235-3611
FAX 405/552-4550

June 29, 1994

Certified Mail No. P 005 347 038

Oxy U.S.A. Inc.
Post Office Box 50250
Midland, TX 79710

Attention: Ed Behm

RE: East Shugart Unit #62
Eddy County, NM
Non-Standard Location Approval

Gentlemen:

We have applied for a permit to drill the above referenced well. This unorthodox location was due to pipelines in the area. The proposed wellsite is within our East Shugart Unit in Eddy County and offsets the following property which our records show you operate.

Federal "R" #1

The East Shugart Unit #62 is located as follows.

Unit G Sec. 3-19S-31E 1750' FNL & 1900' FEL Eddy County, NM

The NMOCD Non-Standard Location Approval process requires that we notify offset operators and submit Proof of Notice.

East Shugart Unit #62
Non-Standard Location Approval
June 29, 1994
Page Two

Please accept this certified letter as notification. If you have any questions, please contact Ernie Buttross, Jr., at (405) 235-3611, X4509.

Sincerely yours,

DEVON ENERGY CORPORATION (NEVADA)

A handwritten signature in cursive script that reads "Candace R. Graham".

Ms. Candace R. Graham
Engineering Tech.

/cg

cc: Oil Conservation Division - Santa Fe, NM
Oil Conservation Division - Artesia, NM
Bureau of Land Management - Carlsbad, NM



ENERGY CORPORATION

20 North Broadway, Suite 1500
Oklahoma City, Oklahoma 73102-8260

Telephone 405/235-3611
FAX 405/552-4550

June 29, 1994

Certified Mail No. P 005 347 039

Ozark Exploration Inc.
1525 Two Turtle Creek
Dallas, TX 75219

RE: East Shugart Unit #53
Eddy County, NM
Non-Standard Location Approval

Gentlemen:

We have applied for a permit to drill the above referenced well. This unorthodox location was due to pipelines in the area. The proposed wellsite is within our East Shugart Unit in Eddy County and offsets the following property which our records show you operate.

Federal #1

The East Shugart Unit #53 is located as follows.

Unit A Sec. 35-18S-31E 330' FNL & 1100' FEL Eddy County, NM

The NMOCD Non-Standard Location Approval process requires that we notify offset operators and submit Proof of Notice.

East Shugart Unit #53
Non-Standard Location Approval
June 29, 1994
Page Two

Please accept this certified letter as notification. If you have any questions, please contact Ernie Buttross, Jr., at (405) 235-3611, X4509.

Sincerely yours,

DEVON ENERGY CORPORATION (NEVADA)

A handwritten signature in cursive script that reads "Candace R. Graham".

Ms. Candace R. Graham
Engineering Tech.

/cg

cc: Oil Conservation Division - Santa Fe, NM
Oil Conservation Division - Artesia, NM
Bureau of Land Management - Carlsbad, NM



ENERGY CORPORATION

20 North Broadway, Suite 1500
Oklahoma City, Oklahoma 73102-8260

Telephone 405/235-3611
FAX 405/552-4550

June 29, 1994

Certified Mail No. P 005 347 040

Phillips Petroleum Company
5525 Hwy 64
Farmington, NM 87401

RE: East Shugart Unit #66
Eddy County, NM
Non-Standard Location Approval

Gentlemen:

We have applied for a permit to drill the above referenced well. This unorthodox location was due to pipelines in the area. The proposed wellsite is within our East Shugart Unit in Eddy County and offsets the following property which our records show you operate.

#2 Shugart "A"

The East Shugart Unit #66 is located as follows.

Unit L Sec. 34-18S-31E 2300' FSL & 425' FWL Eddy County, NM

The NMOCD Non-Standard Location Approval process requires that we notify offset operators and submit Proof of Notice.

East Shugart Unit #66
Non-Standard Location Approval
June 29, 1994
Page Two

Please accept this certified letter as notification. If you have any questions, please contact Ernie Buttross, Jr., at (405) 235-3611, X4509.

Sincerely yours,

DEVON ENERGY CORPORATION (NEVADA)

A handwritten signature in cursive script that reads "Candace R. Graham".

Ms. Candace R. Graham
Engineering Tech.

/cg

cc: Oil Conservation Division - Santa Fe, NM
Oil Conservation Division - Artesia, NM
Bureau of Land Management - Carlsbad, NM

BEFORE THE OIL CONSERVATION COMMISSION
OF THE STATE OF NEW MEXICO

IN THE MATTER OF THE HEARING
CALLED BY THE OIL CONSERVATION
COMMISSION OF NEW MEXICO FOR
THE PURPOSE OF CONSIDERING:

CASE No. 4138
Order No. R-3769

APPLICATION OF ATLANTIC RICHFIELD
COMPANY FOR A WATERFLOOD PROJECT
AND UNORTHODOX INJECTION WELL LOCA-
TION, EDDY COUNTY, NEW MEXICO.

ORDER OF THE COMMISSION

BY THE COMMISSION:

This cause came on for hearing at 9 a.m. on May 21, 1969,
at Santa Fe, New Mexico, before Examiner Elvis A. Utz.

NOW, on this 28th day of May, 1969, the Commission, a
quorum being present, having considered the testimony, the record,
and the recommendations of the Examiner, and being fully advised
in the premises,

FINDS:

(1) That due public notice having been given as required by
law, the Commission has jurisdiction of this cause and the subject
matter thereof.

(2) That the applicant, Atlantic Richfield Company, seeks
permission to institute a waterflood project in its East Shugart
Unit Area, Shugart Pool, by the injection of water into the Yates
and Queen formations through 10 injection wells in Sections 27,
34, and 35, Township 18 South, Range 31 East, NMPM, Eddy County,
New Mexico, and through the following-described well which is to
be drilled at an unorthodox location:

East Shugart Unit Well No. 32, to be located
100 feet from the South line and 990 feet from
the West line of said Section 35.

-2-

CASE No. 4138

Order No. R-3769

(3) That the wells in the project area are in an advanced state of depletion and should properly be classified as "stripper" wells.

(4) That the proposed waterflood project should result in the recovery of otherwise unrecoverable oil, thereby preventing waste.

(5) That the subject application should be approved and the project should be governed by the provisions of Rules 701, 702, and 703 of the Commission Rules and Regulations.

IT IS THEREFORE ORDERED:

(1) That the applicant, Atlantic Richfield Company, is hereby authorized to institute a waterflood project in its East Shugart Unit Area, Shugart Pool, by the injection of water into the Yates and Queen formations through the following-described wells in Township 18 South, Range 31 East, NMPM, Eddy County, New Mexico:

Well	No.	Unit	Section	New Unit Well No.
Atlantic Richfield Co. Hinkle "B"	3	P	27	1
Atlantic Richfield Co. Hinkle "A"	13	A	34	3
Atlantic Richfield Co. Hinkle "B"	5	F	34	15
Atlantic Richfield Co. Hinkle "A"	3	I	34	19
Atlantic Richfield Co. Hinkle "B"	6	L	34	16
Atlantic Richfield Co. Hinkle "B"	1	N	34	29
Cities Service Oil Co. Hinkle "A"	1	O	34	28
Atlantic Richfield Co. Hinkle "A"	12	C	35	6
Atlantic Richfield Co. Hinkle "B"	4	J	35	22
Atlantic Richfield Co. Hinkle "B"	7Y	O	35	23

East Shugart Unit Well No. 32 to be drilled
at an unorthodox location 100' FSL and 990' FWL - Section 35

(2) That the subject waterflood project is hereby designated the Atlantic Richfield East Shugart Waterflood Project and shall be governed by the provisions of Rules 701, 702, and 703 of the Commission Rules and Regulations.

-3-

CASE No. 4138

Order No. R-3769

(3) That monthly progress reports of the waterflood project herein authorized shall be submitted to the Commission in accordance with Rules 704 and 1120 of the Commission Rules and Regulations.

(4) That jurisdiction of this cause is retained for the entry of such further orders as the Commission may deem necessary.

DONE at Santa Fe, New Mexico, on the day and year hereinabove designated.

STATE OF NEW MEXICO
OIL CONSERVATION COMMISSION

DAVID F. CARGO, Chairman

ALEX J. ARMIJO, Member

A. L. PORTER, Jr., Member & Secretary

S E A L

esr/

<p>21 CO (OPPR)</p> <p>22</p> <p>23</p> <p>24</p> <p>25</p> <p>26</p> <p>27</p> <p>28</p> <p>29</p> <p>30</p> <p>31</p> <p>32</p> <p>33</p> <p>34</p> <p>35</p> <p>36</p> <p>37</p> <p>38</p> <p>39</p> <p>40</p> <p>41</p> <p>42</p> <p>43</p> <p>44</p> <p>45</p> <p>46</p> <p>47</p> <p>48</p> <p>49</p> <p>50</p> <p>51</p> <p>52</p> <p>53</p> <p>54</p> <p>55</p> <p>56</p> <p>57</p> <p>58</p> <p>59</p> <p>60</p> <p>61</p> <p>62</p> <p>63</p> <p>64</p> <p>65</p> <p>66</p> <p>67</p> <p>68</p> <p>69</p> <p>70</p> <p>71</p> <p>72</p> <p>73</p> <p>74</p> <p>75</p> <p>76</p> <p>77</p> <p>78</p> <p>79</p> <p>80</p> <p>81</p> <p>82</p> <p>83</p> <p>84</p> <p>85</p> <p>86</p> <p>87</p> <p>88</p> <p>89</p> <p>90</p> <p>91</p> <p>92</p> <p>93</p> <p>94</p> <p>95</p> <p>96</p> <p>97</p> <p>98</p> <p>99</p> <p>100</p>	<p>101</p> <p>102</p> <p>103</p> <p>104</p> <p>105</p> <p>106</p> <p>107</p> <p>108</p> <p>109</p> <p>110</p> <p>111</p> <p>112</p> <p>113</p> <p>114</p> <p>115</p> <p>116</p> <p>117</p> <p>118</p> <p>119</p> <p>120</p> <p>121</p> <p>122</p> <p>123</p> <p>124</p> <p>125</p> <p>126</p> <p>127</p> <p>128</p> <p>129</p> <p>130</p> <p>131</p> <p>132</p> <p>133</p> <p>134</p> <p>135</p> <p>136</p> <p>137</p> <p>138</p> <p>139</p> <p>140</p> <p>141</p> <p>142</p> <p>143</p> <p>144</p> <p>145</p> <p>146</p> <p>147</p> <p>148</p> <p>149</p> <p>150</p> <p>151</p> <p>152</p> <p>153</p> <p>154</p> <p>155</p> <p>156</p> <p>157</p> <p>158</p> <p>159</p> <p>160</p> <p>161</p> <p>162</p> <p>163</p> <p>164</p> <p>165</p> <p>166</p> <p>167</p> <p>168</p> <p>169</p> <p>170</p> <p>171</p> <p>172</p> <p>173</p> <p>174</p> <p>175</p> <p>176</p> <p>177</p> <p>178</p> <p>179</p> <p>180</p> <p>181</p> <p>182</p> <p>183</p> <p>184</p> <p>185</p> <p>186</p> <p>187</p> <p>188</p> <p>189</p> <p>190</p> <p>191</p> <p>192</p> <p>193</p> <p>194</p> <p>195</p> <p>196</p> <p>197</p> <p>198</p> <p>199</p> <p>200</p>	<p>201</p> <p>202</p> <p>203</p> <p>204</p> <p>205</p> <p>206</p> <p>207</p> <p>208</p> <p>209</p> <p>210</p> <p>211</p> <p>212</p> <p>213</p> <p>214</p> <p>215</p> <p>216</p> <p>217</p> <p>218</p> <p>219</p> <p>220</p> <p>221</p> <p>222</p> <p>223</p> <p>224</p> <p>225</p> <p>226</p> <p>227</p> <p>228</p> <p>229</p> <p>230</p> <p>231</p> <p>232</p> <p>233</p> <p>234</p> <p>235</p> <p>236</p> <p>237</p> <p>238</p> <p>239</p> <p>240</p> <p>241</p> <p>242</p> <p>243</p> <p>244</p> <p>245</p> <p>246</p> <p>247</p> <p>248</p> <p>249</p> <p>250</p> <p>251</p> <p>252</p> <p>253</p> <p>254</p> <p>255</p> <p>256</p> <p>257</p> <p>258</p> <p>259</p> <p>260</p> <p>261</p> <p>262</p> <p>263</p> <p>264</p> <p>265</p> <p>266</p> <p>267</p> <p>268</p> <p>269</p> <p>270</p> <p>271</p> <p>272</p> <p>273</p> <p>274</p> <p>275</p> <p>276</p> <p>277</p> <p>278</p> <p>279</p> <p>280</p> <p>281</p> <p>282</p> <p>283</p> <p>284</p> <p>285</p> <p>286</p> <p>287</p> <p>288</p> <p>289</p> <p>290</p> <p>291</p> <p>292</p> <p>293</p> <p>294</p> <p>295</p> <p>296</p> <p>297</p> <p>298</p> <p>299</p> <p>300</p>	<p>301</p> <p>302</p> <p>303</p> <p>304</p> <p>305</p> <p>306</p> <p>307</p> <p>308</p> <p>309</p> <p>310</p> <p>311</p> <p>312</p> <p>313</p> <p>314</p> <p>315</p> <p>316</p> <p>317</p> <p>318</p> <p>319</p> <p>320</p> <p>321</p> <p>322</p> <p>323</p> <p>324</p> <p>325</p> <p>326</p> <p>327</p> <p>328</p> <p>329</p> <p>330</p> <p>331</p> <p>332</p> <p>333</p> <p>334</p> <p>335</p> <p>336</p> <p>337</p> <p>338</p> <p>339</p> <p>340</p> <p>341</p> <p>342</p> <p>343</p> <p>344</p> <p>345</p> <p>346</p> <p>347</p> <p>348</p> <p>349</p> <p>350</p> <p>351</p> <p>352</p> <p>353</p> <p>354</p> <p>355</p> <p>356</p> <p>357</p> <p>358</p> <p>359</p> <p>360</p> <p>361</p> <p>362</p> <p>363</p> <p>364</p> <p>365</p> <p>366</p> <p>367</p> <p>368</p> <p>369</p> <p>370</p> <p>371</p> <p>372</p> <p>373</p> <p>374</p> <p>375</p> <p>376</p> <p>377</p> <p>378</p> <p>379</p> <p>380</p> <p>381</p> <p>382</p> <p>383</p> <p>384</p> <p>385</p> <p>386</p> <p>387</p> <p>388</p> <p>389</p> <p>390</p> <p>391</p> <p>392</p> <p>393</p> <p>394</p> <p>395</p> <p>396</p> <p>397</p> <p>398</p> <p>399</p> <p>400</p>	<p>401</p> <p>402</p> <p>403</p> <p>404</p> <p>405</p> <p>406</p> <p>407</p> <p>408</p> <p>409</p> <p>410</p> <p>411</p> <p>412</p> <p>413</p> <p>414</p> <p>415</p> <p>416</p> <p>417</p> <p>418</p> <p>419</p> <p>420</p> <p>421</p> <p>422</p> <p>423</p> <p>424</p> <p>425</p> <p>426</p> <p>427</p> <p>428</p> <p>429</p> <p>430</p> <p>431</p> <p>432</p> <p>433</p> <p>434</p> <p>435</p> <p>436</p> <p>437</p> <p>438</p> <p>439</p> <p>440</p> <p>441</p> <p>442</p> <p>443</p> <p>444</p> <p>445</p> <p>446</p> <p>447</p> <p>448</p> <p>449</p> <p>450</p> <p>451</p> <p>452</p> <p>453</p> <p>454</p> <p>455</p> <p>456</p> <p>457</p> <p>458</p> <p>459</p> <p>460</p> <p>461</p> <p>462</p> <p>463</p> <p>464</p> <p>465</p> <p>466</p> <p>467</p> <p>468</p> <p>469</p> <p>470</p> <p>471</p> <p>472</p> <p>473</p> <p>474</p> <p>475</p> <p>476</p> <p>477</p> <p>478</p> <p>479</p> <p>480</p> <p>481</p> <p>482</p> <p>483</p> <p>484</p> <p>485</p> <p>486</p> <p>487</p> <p>488</p> <p>489</p> <p>490</p> <p>491</p> <p>492</p> <p>493</p> <p>494</p> <p>495</p> <p>496</p> <p>497</p> <p>498</p> <p>499</p> <p>500</p>	<p>501</p> <p>502</p> <p>503</p> <p>504</p> <p>505</p> <p>506</p> <p>507</p> <p>508</p> <p>509</p> <p>510</p> <p>511</p> <p>512</p> <p>513</p> <p>514</p> <p>515</p> <p>516</p> <p>517</p> <p>518</p> <p>519</p> <p>520</p> <p>521</p> <p>522</p> <p>523</p> <p>524</p> <p>525</p> <p>526</p> <p>527</p> <p>528</p> <p>529</p> <p>530</p> <p>531</p> <p>532</p> <p>533</p> <p>534</p> <p>535</p> <p>536</p> <p>537</p> <p>538</p> <p>539</p> <p>540</p> <p>541</p> <p>542</p> <p>543</p> <p>544</p> <p>545</p> <p>546</p> <p>547</p> <p>548</p> <p>549</p> <p>550</p> <p>551</p> <p>552</p> <p>553</p> <p>554</p> <p>555</p> <p>556</p> <p>557</p> <p>558</p> <p>559</p> <p>560</p> <p>561</p> <p>562</p> <p>563</p> <p>564</p> <p>565</p> <p>566</p> <p>567</p> <p>568</p> <p>569</p> <p>570</p> <p>571</p> <p>572</p> <p>573</p> <p>574</p> <p>575</p> <p>576</p> <p>577</p> <p>578</p> <p>579</p> <p>580</p> <p>581</p> <p>582</p> <p>583</p> <p>584</p> <p>585</p> <p>586</p> <p>587</p> <p>588</p> <p>589</p> <p>590</p> <p>591</p> <p>592</p> <p>593</p> <p>594</p> <p>595</p> <p>596</p> <p>597</p> <p>598</p> <p>599</p> <p>600</p>	<p>601</p> <p>602</p> <p>603</p> <p>604</p> <p>605</p> <p>606</p> <p>607</p> <p>608</p> <p>609</p> <p>610</p> <p>611</p> <p>612</p> <p>613</p> <p>614</p> <p>615</p> <p>616</p> <p>617</p> <p>618</p> <p>619</p> <p>620</p> <p>621</p> <p>622</p> <p>623</p> <p>624</p> <p>625</p> <p>626</p> <p>627</p> <p>628</p> <p>629</p> <p>630</p> <p>631</p> <p>632</p> <p>633</p> <p>634</p> <p>635</p> <p>636</p> <p>637</p> <p>638</p> <p>639</p> <p>640</p> <p>641</p> <p>642</p> <p>643</p> <p>644</p> <p>645</p> <p>646</p> <p>647</p> <p>648</p> <p>649</p> <p>650</p> <p>651</p> <p>652</p> <p>653</p> <p>654</p> <p>655</p> <p>656</p> <p>657</p> <p>658</p> <p>659</p> <p>660</p> <p>661</p> <p>662</p> <p>663</p> <p>664</p> <p>665</p> <p>666</p> <p>667</p> <p>668</p> <p>669</p> <p>670</p> <p>671</p> <p>672</p> <p>673</p> <p>674</p> <p>675</p> <p>676</p> <p>677</p> <p>678</p> <p>679</p> <p>680</p> <p>681</p> <p>682</p> <p>683</p> <p>684</p> <p>685</p> <p>686</p> <p>687</p> <p>688</p> <p>689</p> <p>690</p> <p>691</p> <p>692</p> <p>693</p> <p>694</p> <p>695</p> <p>696</p> <p>697</p> <p>698</p> <p>699</p> <p>700</p>	<p>701</p> <p>702</p> <p>703</p> <p>704</p> <p>705</p> <p>706</p> <p>707</p> <p>708</p> <p>709</p> <p>710</p> <p>711</p> <p>712</p> <p>713</p> <p>714</p> <p>715</p> <p>716</p> <p>717</p> <p>718</p> <p>719</p> <p>720</p> <p>721</p> <p>722</p> <p>723</p> <p>724</p> <p>725</p> <p>726</p> <p>727</p> <p>728</p> <p>729</p> <p>730</p> <p>731</p> <p>732</p> <p>733</p> <p>734</p> <p>735</p> <p>736</p> <p>737</p> <p>738</p> <p>739</p> <p>740</p> <p>741</p> <p>742</p> <p>743</p> <p>744</p> <p>745</p> <p>746</p> <p>747</p> <p>748</p> <p>749</p> <p>750</p> <p>751</p> <p>752</p> <p>753</p> <p>754</p> <p>755</p> <p>756</p> <p>757</p> <p>758</p> <p>759</p> <p>760</p> <p>761</p> <p>762</p> <p>763</p> <p>764</p> <p>765</p> <p>766</p> <p>767</p> <p>768</p> <p>769</p> <p>770</p> <p>771</p> <p>772</p> <p>773</p> <p>774</p> <p>775</p> <p>776</p> <p>777</p> <p>778</p> <p>779</p> <p>780</p> <p>781</p> <p>782</p> <p>783</p> <p>784</p> <p>785</p> <p>786</p> <p>787</p> <p>788</p> <p>789</p> <p>790</p> <p>791</p> <p>792</p> <p>793</p> <p>794</p> <p>795</p> <p>796</p> <p>797</p> <p>798</p> <p>799</p> <p>800</p>	<p>801</p> <p>802</p> <p>803</p> <p>804</p> <p>805</p> <p>806</p> <p>807</p> <p>808</p> <p>809</p> <p>810</p> <p>811</p> <p>812</p> <p>813</p> <p>814</p> <p>815</p> <p>816</p> <p>817</p> <p>818</p> <p>819</p> <p>820</p> <p>821</p> <p>822</p> <p>823</p> <p>824</p> <p>825</p> <p>826</p> <p>827</p> <p>828</p> <p>829</p> <p>830</p> <p>831</p> <p>832</p> <p>833</p> <p>834</p> <p>835</p> <p>836</p> <p>837</p> <p>838</p> <p>839</p> <p>840</p> <p>841</p> <p>842</p> <p>843</p> <p>844</p> <p>845</p> <p>846</p> <p>847</p> <p>848</p> <p>849</p> <p>850</p> <p>851</p> <p>852</p> <p>853</p> <p>854</p> <p>855</p> <p>856</p> <p>857</p> <p>858</p> <p>859</p> <p>860</p> <p>861</p> <p>862</p> <p>863</p> <p>864</p> <p>865</p> <p>866</p> <p>867</p> <p>868</p> <p>869</p> <p>870</p> <p>871</p> <p>872</p> <p>873</p> <p>874</p> <p>875</p> <p>876</p> <p>877</p> <p>878</p> <p>879</p> <p>880</p> <p>881</p> <p>882</p> <p>883</p> <p>884</p> <p>885</p> <p>886</p> <p>887</p> <p>888</p> <p>889</p> <p>890</p> <p>891</p> <p>892</p> <p>893</p> <p>894</p> <p>895</p> <p>896</p> <p>897</p> <p>898</p> <p>899</p> <p>900</p>	<p>901</p> <p>902</p> <p>903</p> <p>904</p> <p>905</p> <p>906</p> <p>907</p> <p>908</p> <p>909</p> <p>910</p> <p>911</p> <p>912</p> <p>913</p> <p>914</p> <p>915</p> <p>916</p> <p>917</p> <p>918</p> <p>919</p> <p>920</p> <p>921</p> <p>922</p> <p>923</p> <p>924</p> <p>925</p> <p>926</p> <p>927</p> <p>928</p> <p>929</p> <p>930</p> <p>931</p> <p>932</p> <p>933</p> <p>934</p> <p>935</p> <p>936</p> <p>937</p> <p>938</p> <p>939</p> <p>940</p> <p>941</p> <p>942</p> <p>943</p> <p>944</p> <p>945</p> <p>946</p> <p>947</p> <p>948</p> <p>949</p> <p>950</p> <p>951</p> <p>952</p> <p>953</p> <p>954</p> <p>955</p> <p>956</p> <p>957</p> <p>958</p> <p>959</p> <p>960</p> <p>961</p> <p>962</p> <p>963</p> <p>964</p> <p>965</p> <p>966</p> <p>967</p> <p>968</p> <p>969</p> <p>970</p> <p>971</p> <p>972</p> <p>973</p> <p>974</p> <p>975</p> <p>976</p> <p>977</p> <p>978</p> <p>979</p> <p>980</p> <p>981</p> <p>982</p> <p>983</p> <p>984</p> <p>985</p> <p>986</p> <p>987</p> <p>988</p> <p>989</p> <p>990</p>	<p>991</p> <p>992</p> <p>993</p> <p>994</p> <p>995</p> <p>996</p> <p>997</p> <p>998</p> <p>999</p> <p>1000</p>
--------------------------------------------------------------------------------------------------------------------------------------------------------------------------------------------------------------------------------------------------------------------------------------------------------------------------------------------------------------------------------------------------------------------------------------------------------------------------------------------------------------------------------------------------------------------------------------------------------------------------------------------------------------------------------------------------------------------------------------------------------------------------------------------------------------------------------------------	---------------------------------------------------------------------------------------------------------------------------------------------------------------------------------------------------------------------------------------------------------------------------------------------------------------------------------------------------------------------------------------------------------------------------------------------------------------------------------------------------------------------------------------------------------------------------------------------------------------------------------------------------------------------------------------------------------------------------------------------------------------------------------------------------------------------------------------------------------------------------------------------------------------------------------------------------------------------------------------------------------------------------------------------------------------------------------------------------------------------------------------------	---------------------------------------------------------------------------------------------------------------------------------------------------------------------------------------------------------------------------------------------------------------------------------------------------------------------------------------------------------------------------------------------------------------------------------------------------------------------------------------------------------------------------------------------------------------------------------------------------------------------------------------------------------------------------------------------------------------------------------------------------------------------------------------------------------------------------------------------------------------------------------------------------------------------------------------------------------------------------------------------------------------------------------------------------------------------------------------------------------------------------------------------	---------------------------------------------------------------------------------------------------------------------------------------------------------------------------------------------------------------------------------------------------------------------------------------------------------------------------------------------------------------------------------------------------------------------------------------------------------------------------------------------------------------------------------------------------------------------------------------------------------------------------------------------------------------------------------------------------------------------------------------------------------------------------------------------------------------------------------------------------------------------------------------------------------------------------------------------------------------------------------------------------------------------------------------------------------------------------------------------------------------------------------------------	---------------------------------------------------------------------------------------------------------------------------------------------------------------------------------------------------------------------------------------------------------------------------------------------------------------------------------------------------------------------------------------------------------------------------------------------------------------------------------------------------------------------------------------------------------------------------------------------------------------------------------------------------------------------------------------------------------------------------------------------------------------------------------------------------------------------------------------------------------------------------------------------------------------------------------------------------------------------------------------------------------------------------------------------------------------------------------------------------------------------------------------------	---------------------------------------------------------------------------------------------------------------------------------------------------------------------------------------------------------------------------------------------------------------------------------------------------------------------------------------------------------------------------------------------------------------------------------------------------------------------------------------------------------------------------------------------------------------------------------------------------------------------------------------------------------------------------------------------------------------------------------------------------------------------------------------------------------------------------------------------------------------------------------------------------------------------------------------------------------------------------------------------------------------------------------------------------------------------------------------------------------------------------------------------	---------------------------------------------------------------------------------------------------------------------------------------------------------------------------------------------------------------------------------------------------------------------------------------------------------------------------------------------------------------------------------------------------------------------------------------------------------------------------------------------------------------------------------------------------------------------------------------------------------------------------------------------------------------------------------------------------------------------------------------------------------------------------------------------------------------------------------------------------------------------------------------------------------------------------------------------------------------------------------------------------------------------------------------------------------------------------------------------------------------------------------------------	---------------------------------------------------------------------------------------------------------------------------------------------------------------------------------------------------------------------------------------------------------------------------------------------------------------------------------------------------------------------------------------------------------------------------------------------------------------------------------------------------------------------------------------------------------------------------------------------------------------------------------------------------------------------------------------------------------------------------------------------------------------------------------------------------------------------------------------------------------------------------------------------------------------------------------------------------------------------------------------------------------------------------------------------------------------------------------------------------------------------------------------------	---------------------------------------------------------------------------------------------------------------------------------------------------------------------------------------------------------------------------------------------------------------------------------------------------------------------------------------------------------------------------------------------------------------------------------------------------------------------------------------------------------------------------------------------------------------------------------------------------------------------------------------------------------------------------------------------------------------------------------------------------------------------------------------------------------------------------------------------------------------------------------------------------------------------------------------------------------------------------------------------------------------------------------------------------------------------------------------------------------------------------------------------	-------------------------------------------------------------------------------------------------------------------------------------------------------------------------------------------------------------------------------------------------------------------------------------------------------------------------------------------------------------------------------------------------------------------------------------------------------------------------------------------------------------------------------------------------------------------------------------------------------------------------------------------------------------------------------------------------------------------------------------------------------------------------------------------------------------------------------------------------------------------------------------------------------------------------------------------------------------------------------------------------------------------------------	----------------------------------------------------------------------------------------------------------------

100