

DEVON
ENERGY
OPERATING
CORPORATION

OIL CONSERVATION DIVISION
RECEIVED 405/235-3611
20 North Broadway, Suite 1500 Fax 405/552-4550
Oklahoma City, Oklahoma 73102 PP 2-58 Fax 405/552-4552

April 17, 1995

State of New Mexico
Energy, Minerals and Natural Resources Department
Oil Conservation Division
2040 South Pacheco
Santa Fe, New Mexico 87504 - 2088

Attention: Mike Stogner

Re: Non - Standard Location Approval

Dear Sir:

It is requested that administrative approval be granted under Rule 104F. (1) for unorthodox locations for the infill producing wells located within the Keel West Waterflood Project, at the following locations:

WELL	LOCATION
H. E. West B #90	2570' FSL & 1356' FWL, Sec. 9-17S-31E
H. E. West B #91	1365' FSL & 1360' FWL, Sec. 9-17S-31E
H. E. West B #76	1338' FSL & 1330' FEL, Sec. 3-17S-31E
H. E. West B # 87	1310' FSL & 1308' FWL, Sec. 4-17S-31E
H. E. West A #29	1345' FNL & 1194' FEL, Sec. 4-17S-31E
H. E. West A #30	1560' FNL & 2580' FWL, Sec. 3-17S-31E
J. L. Keel A #36	100' FNL & 2460' FWL, Sec. 7-17S-31E

Attached is a plat of the Keel - West Waterflood Project showing the project boundaries that are adjacent to the subject wells. Forms 3160 - 3 and C - 102 are attached for each of the seven wells listed above. The Keel - West Waterflood project is located on federal property and each proposed well is to be part of this active waterflood project.

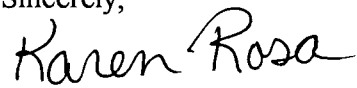
The above locations do not conform to Rule 104. C. I. because they are located closer than 330' to the governmental quarter - quarter section boundaries. They will be drilled to a depth sufficient to produce the Grayburg - San Andres formation (approximately 4000'). The wells will be drilled at the unorthodox locations in order to prevent waste by developing an efficient production and injection pattern within the Keel - West Waterflood

Project, which was approved under Order R - 2268. When fully developed these wells will combine with the existing wells (some of which will eventually be converted to injection) to establish a 40 acre 5 spot waterflood pattern.

There are no operators that have production in offsetting 40 acre tracts. The seven wells listed are offset by wells that are already operated by Devon Energy Operating Corporation; therefore, no notification is necessary.

Should you require any additional information regarding any of these unorthodox locations please notify me at 405-552-4527.

Sincerely,

A handwritten signature in black ink that reads "Karen Rosa". The signature is written in a cursive, flowing style.

Karen Rosa
Engineering Technician

UNITED STATES
DEPARTMENT OF THE INTERIOR
BUREAU OF LAND MANAGEMENT

SUBMIT IN TRIPLICATE*

(See other instructions on
reverse side)OPERATOR'S COPY
Form approved.

APPLICATION FOR PERMIT TO DRILL OR DEEPEN

1a. TYPE OF WORK: DRILL <input checked="" type="checkbox"/> DEEPEN <input type="checkbox"/>		5. LEASE DESIGNATION AND SERIAL NO. LC 029426-B	
b. TYPE OF WELL: OIL WELL <input checked="" type="checkbox"/> GAS WELL <input type="checkbox"/> Other <input type="checkbox"/> SINGLE ZONE <input type="checkbox"/> MULTIPLE ZONE <input type="checkbox"/>		6. IF INDIAN, ALLOTTEE OR TRIBE NAME NA	
2. NAME OF OPERATOR DEVON ENERGY OPERATING CORPORATION		7. UNIT AGREEMENT NAME NA	
3. ADDRESS AND TELEPHONE NO. 20 N. BROADWAY, SUITE 1500, OKC, OK 73102 (405) 552-4560		8. FARM OR LEASE NAME, WELL NO. WEST "B" #90	
4. LOCATION OF WELL (Report location clearly and in accordance with any State requirements)* At surface 2570 FSL & 1356' FWL <u>UNORTHODOX</u> Subject to <u>LOCATION:</u> Like Approval At top proposed prod. zone (SAME) By State		9. API WELL NO.	
10. FIELD AND POOL, OR WILDCAT GRAYBURG-JACKSON		11. SEC., T., R., M. OR BLOCK AND SURVEY OR AREA SECTION 9-T17S-R31E	
14. DISTANCE IN MILES AND DIRECTION FROM NEAREST TOWN OR POST OFFICE* 4 miles east & 4 miles north of Loco Hills, N.M.		12. COUNTY OR PARISH EDDY	13. STATE NM
15. DISTANCE FROM PROPOSED LOCATION TO NEAREST PROPERTY OR LEASE LINE, FT. 1356 (Also to nearest ddr unit line if any)	16. NO. OF ACRES IN LEASE 1919.88	17. NO. OF ACRES ASSIGNED TO THIS WELL 40	
18. DISTANCE FROM PROPOSED LOCATION* TO NEAREST WELL, DRILLING, COMPLETED, OR APPLIED FOR, ON THIS LEASE, FT. 800'	19. PROPOSED DEPTH 4400	20. ROTARY OR CABLE TOOLS* Rotary	
21. ELEVATIONS (Show whether DF, RT, GR, etc.) 3869' GR		22. APPROX. DATE WORK WILL START* April 1, 1995	

23. PROPOSED CASING AND CEMENTING PROGRAM				
SIZE OF HOLE	GRADE, SIZE OF CASING	WEIGHT PER FOOT	SETTING DEPTH	QUANTITY OF CEMENT
12 1/4"	8 5/8" J-55	24.0#	600'	200 sk RFC cmt + 200 sk Class "C"
7 7/8"	5 1/2" J-55	15.5#	4400'	500 sk Class "C" 35/65 + 500 sk Class "C" + 1/4 lb/sk cellophane flakes

We plan to circulate cement to surface on all casing strings. Devon Energy Operating Corporation proposes to drill to 4400' to test the Grayburg-Jackson formation for commercial quantities of oil. If the Grayburg-Jackson is deemed non-commercial, the wellbore will be plugged and abandoned per Federal Regulations. Programs to adhere to onshore oil and gas regulations are outlined in the following exhibits and attachments.

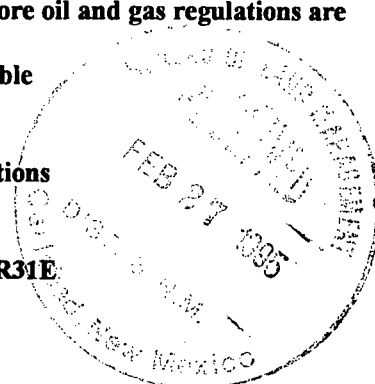
Drilling Program

- Exhibits #1/1-A = Blowout Prevention Equipment
Exhibit #2 = Location and Elevation Plat
Exhibit #3/3-A = Road Map and Topo Map
Exhibit #4 = Wells Within 1 Mile Radius
Exhibit #5 = Production Facilities Plat
Exhibit #6 = Rotary Rig Layout
Exhibit #7 = Casing Design
H2S Operating Plan

The undersigned accepts all applicable terms, condition, stipulations and restrictions concerning operations conducted on the leased land or portions thereof, as described below:

Lease No. LC029426-B
Legal Description: Section 9-T17N-R31E
Bond Coverage: Nationwide
BLM Bond No.: CO1151

Approval Subject to
General Requirements and
Special Stipulations
Attached



IN ABOVE SPACE DESCRIBE PROPOSED PROGRAM: If proposal is to deepen, give data on present productive zone and proposed new productive zone. If proposal is to drill or deepen directionally, give pertinent data on subsurface locations and measured and true vertical depths. Give blowout preventer program, if any.

24.

SIGNED Randy Jackson TITLE DISTRICT ENGINEER DATE 2/24/95

(This space for Federal or State office use)

PERMIT NO. _____ APPROVAL DATE _____

Application approval does not warrant or certify that the applicant holds legal or equitable title to those rights in the subject lease which would entitle the applicant to conduct operations thereon.
CONDITIONS OF APPROVAL, IF ANY:

APPROVED BY Uplanda Vega TITLE ASST. DISTRICT MANAGER DATE 4-13-95
See Instructions On Reverse Side

Title 18 U.S.C. Section 1001, makes it a crime for any person knowingly and willfully to make to any department or agency of the United States any false, fictitious or fraudulent statements or representations as to any matter within its jurisdiction

DISTRICT I
P. O. Box 1980
Hobbs, NM 88241-1980

State of New Mexico
Energy, Minerals, and Natural Resources Department

Form C-102
Revised 02-10-94

Instructions on back

DISTRICT II
P. O. Drawer DD
Artesia, NM 88211-0719

OIL CONSERVATION DIVISION

P. O. Box 2088
Santa Fe, New Mexico 87504-2088

Submit to the Appropriate
District Office
State Lease - 4 copies
Fee Lease - 3 copies

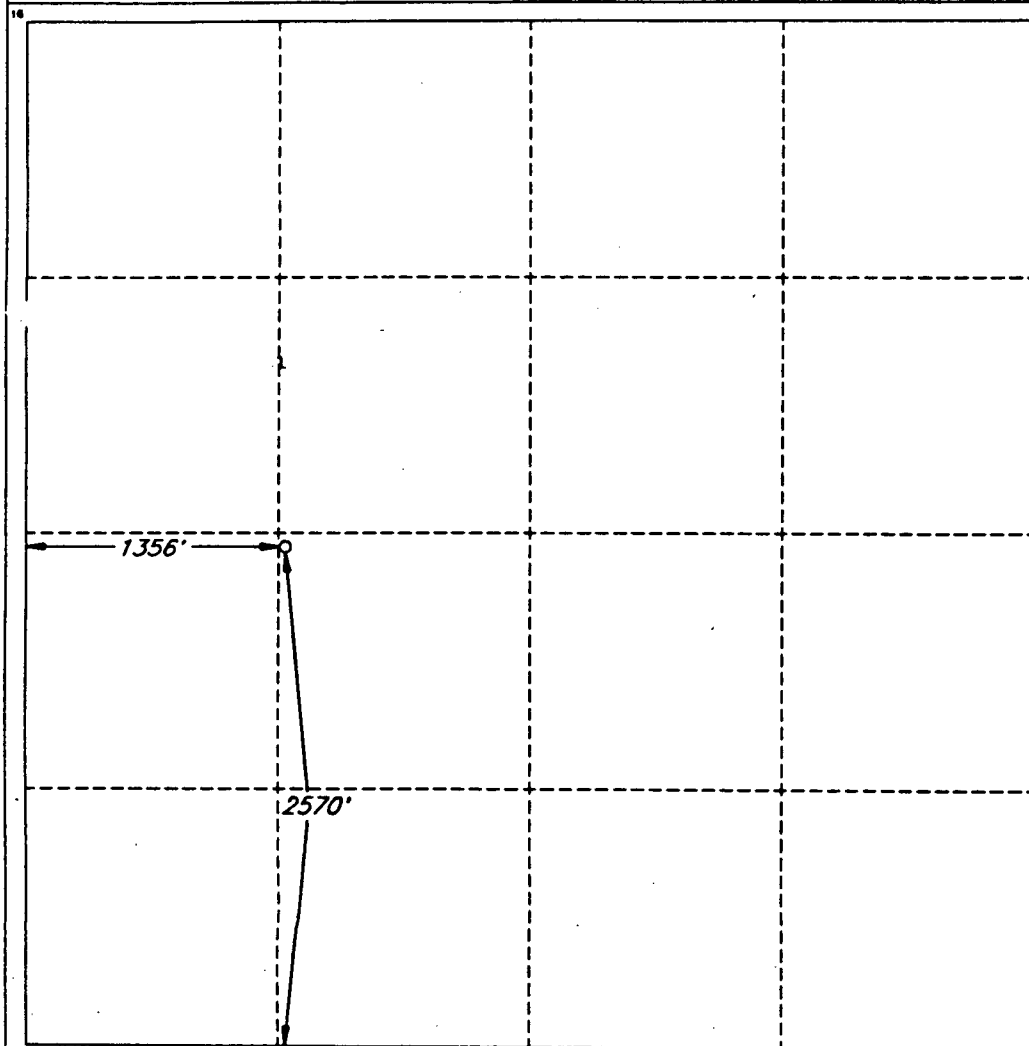
☐ AMENDED REPORT

DISTRICT IV
P. O. Box 2088
Santa Fe, NM 87507-2088

WELL LOCATION AND ACREAGE DEDICATION PLAT

1 API Number		2 Pool Code		3 Pool Name Grayburg-Jackson					
4 Property Code K		5 Property Name WEST 'B' FEDERAL						6 Well Number 90	
7 OGRID No.		8 Operator Name DEVON ENERGY OPERATING COMPANY						9 Elevation 3869'	
10 SURFACE LOCATION									
UL or lot no. K	Section 9	Township 17 SOUTH	Range 31 EAST, N.M.P.M.	Lot Ida	Feet from the 2570'	North/South line SOUTH	Feet from the 1356'	East/West line WEST	County EDDY
11 BOTTOM HOLE LOCATION IF DIFFERENT FROM SURFACE									
UL or lot no.	Section	Township	Range	Lot Ida	Feet from the	North/South line	Feet from the	East/West line	County
12 Dedicated Acres 40		13 Joint or Infill		14 Consolidation Code		15 Order No.			

NO ALLOWABLE WELL BE ASSIGNED TO THIS COMPLETION UNTIL ALL INTERESTS HAVE BEEN CONSOLIDATED OR A NON-STANDARD UNIT HAS BEEN APPROVED BY THE DIVISION



OPERATOR CERTIFICATION

I hereby certify that the information contained herein is true and complete to the best of my knowledge and belief.

Signature

Printed Name
Randy Jackson

Title
District Engineer

Date
3/10/95

SURVEYOR CERTIFICATION

I hereby certify that the well location shown on this plat was plotted from field notes of actual surveys made by me or under my supervision, and that the same is true and correct to the best of my belief.

Date of Survey
OCTOBER 24, 1994

Signature and Seal of
Professional Surveyor

V. LYNN
BEZNER
NO. 7920
V. L. BEZNER AND R.D.S. #7820

JOB #35908-58 28 SW / V.H.B.

UNITED STATES
DEPARTMENT OF THE INTERIOR
BUREAU OF LAND MANAGEMENT

SUBMIT IN TRIPLICATE*

(See other instructions on
reverse side)OPERATOR'S COPY
Form approved.

APPLICATION FOR PERMIT TO DRILL OR DEEPEN

1a. TYPE OF WORK: DRILL ☒ DEEPEN ☐

1b. TYPE OF WELL: OIL WELL ☒ GAS WELL ☐ Other ☐ SINGLE ZONE ☐ MULTIPLE ZONE ☐

2. NAME OF OPERATOR

DEVON ENERGY OPERATING CORPORATION

3. ADDRESS AND TELEPHONE NO.

20 N. BROADWAY, SUITE 1500, OKC, OK 73102 (405) 552-4560

4. LOCATION OF WELL (Report location clearly and in accordance with any State requirements)*

At surface 1365' FSL & 1360' FWL

UNORTHODOX

At top proposed prod. zone (SAME)

LOCATION:

Subject to
Like Approval
By State

14. DISTANCE IN MILES AND DIRECTION FROM NEAREST TOWN OR POST OFFICE*

4 miles east & 4 miles north of Loco Hills, N.M.

5. LEASE DESIGNATION AND SERIAL NO.
LC 029426-B6. IF INDIAN, ALLOTTEE OR TRIBE NAME
NA7. UNIT AGREEMENT NAME
NA8. FARM OR LEASE NAME, WELL NO.
WEST "B" #91

9. API WELL NO.

10. FIELD AND POOL, OR WILDCAT
GRAYBURG-JACKSON11. SEC., T., R., M., OR BLOCK AND SURVEY OR AREA
SECTION 9-T17 S- R31 E12. COUNTY OR PARISH
EDDY13. STATE
NM15. DISTANCE FROM PROPOSED
LOCATION TO NEARESTPROPERTY OR LEASE LINE, FT. 1360
(Also to nearest drg. unit line if any)16. NO. OF ACRES IN LEASE
1919.8817. NO. OF ACRES ASSIGNED
TO THIS WELL
40

18. DISTANCE FROM PROPOSED LOCATION*

TO NEAREST WELL, DRILLING, COMPLETED,
OR APPLIED FOR, ON THIS LEASE, FT. 800'19. PROPOSED DEPTH
440020. ROTARY OR CABLE TOOLS*
Rotary

21. ELEVATIONS (Show whether DF, RT, GR, etc.)

3857' GR

22. APPROX. DATE WORK WILL START*
April 1, 1995

23.

PROPOSED CASING AND CEMENTING PROGRAM

SIZE OF HOLE	GRADE, SIZE OF CASING	WEIGHT PER FOOT	SETTING DEPTH	QUANTITY OF CEMENT
12 1/4"	8 5/8" J-55	24.0#	600' CIRCULATE	200 sk RFC cmt + 200 sk Class "C"
7 7/8"	5 1/2" J-55	15.5#	4400'	500 sk Class "C" 35/65 + 500 sk Class "C" + 1/4 lb/sk cellophane flakes

We plan to circulate cement to surface on all casing strings. Devon Energy Operating Corporation proposes to drill to 4400' to test the Grayburg-Jackson formation for commercial quantities of oil. If the Grayburg-Jackson is deemed non-commercial, the wellbore will be plugged and abandoned per Federal Regulations. Programs to adhere to onshore oil and gas regulations are outlined in the following exhibits and attachments.

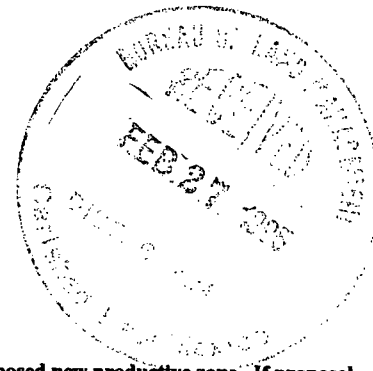
Drilling Program

Exhibits #1/1-A = Blowout Prevention Equipment
Exhibit #2 = Location and Elevation Plat
Exhibit #3/3-A = Road Map and Topo Map
Exhibit #4 = Wells Within 1 Mile Radius
Exhibit #5 = Production Facilities Plat
Exhibit #6 = Rotary Rig Layout
Exhibit #7 = Casing Design

H2S Operating Plan

Approval Subject to
General Requirements and
Special Stipulations

The undersigned accepts all applicable terms, condition, stipulations and restrictions concerning operations conducted on the leased land or portions thereof, as described below:
Lease No. LC029426-B
Legal Description: Section 9-T17N-R31E
Bond Coverage: Nationwide
BLM Bond No.: CO1151



IN ABOVE SPACE DESCRIBE PROPOSED PROGRAM: If proposal is to deepen, give data on present productive zone and proposed new productive zone. If proposal is to drill or deepen directionally, give pertinent data on subsurface locations and measured and true vertical depths. Give blowout preventer program, if any.

24.

SIGNED Randy JacksonTITLE RANDY JACKSON
DISTRICT ENGINEERDATE 2/24/95

*(This space for Federal or State office use)

PERMIT NO. _____

APPROVAL DATE _____

Application approval does not warrant or certify that the applicant holds legal or equitable title to those rights in the subject lease which would entitle the applicant to conduct operations thereon.
CONDITIONS OF APPROVAL, IF ANY:

APPROVED BY [Signature]TITLE AREA MANAGERDATE 4-13-95

See Instructions On Reverse Side

Title 18 U.S.C. Section 1001, makes it a crime for any person knowingly and willfully to make to any department or agency of the United States any false, fictitious or fraudulent statements or representations as to any matter within its jurisdiction

DISTRICT I
P. O. Box 1980
Hobbs, NM 88241-1980

State of New Mexico
Energy, Minerals, and Natural Resources Department

Form C-102
Revised 02-10-94
Instructions on back

DISTRICT II
P. O. Drawer DD
Artesia, NM 88211-0719

OIL CONSERVATION DIVISION
P. O. Box 2088
Santa Fe, New Mexico 87504-2088

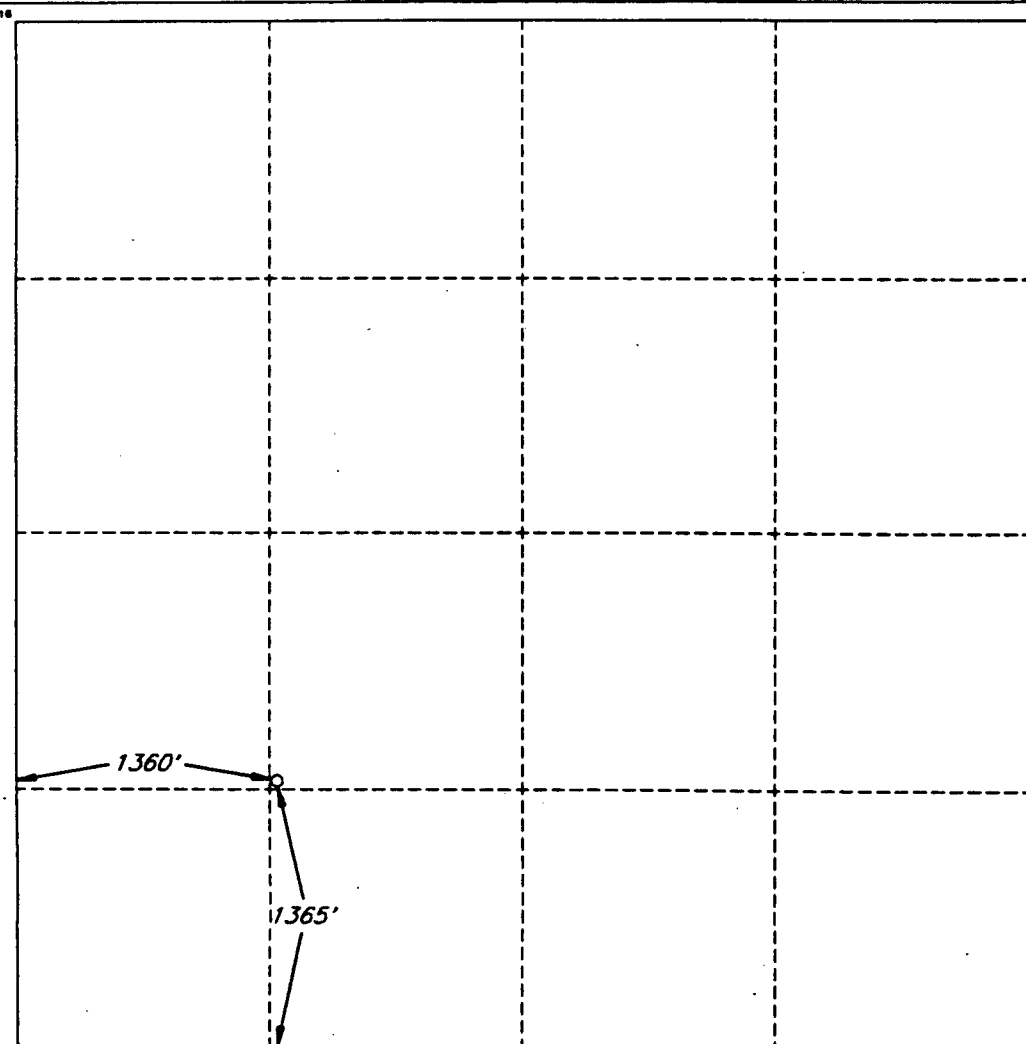
Submit to the Appropriate
District Office
State Lease - 4 copies
Fee Lease - 3 copies

☐ AMENDED REPORT

DISTRICT III
1000 Rio Brazos Rd.
Aztec, NM 87410

DISTRICT IV
P. O. Box 2088
Santa Fe, NM 87507-2088

WELL LOCATION AND ACREAGE DEDICATION PLAT

1 API Number		2 Pool Code		3 Pool Name Grayburg Jackson					
4 Property Code K		5 Property Name WEST 'B' FEDERAL						6 Well Number 91	
7 OGRID No.		8 Operator Name DEVON ENERGY OPERATING COMPANY						9 Elevation 3857'	
10 SURFACE LOCATION									
UL or lot no. K	Section 9	Township 17 SOUTH	Range 31 EAST, N.M.P.M.	Lot Ida	Feet from the 1365'	North/South line SOUTH	Feet from the 1360'	East/West line WEST	County EDDY
11 BOTTOM HOLE LOCATION IF DIFFERENT FROM SURFACE									
UL or lot no.	Section	Township	Range	Lot Ida	Feet from the	North/South line	Feet from the	East/West line	County
12 Dedicated Acres 40		13 Joint or Infill		14 Consolidation Code		15 Order No.			
16 NO ALLOWABLE WELL BE ASSIGNED TO THIS COMPLETION UNTIL ALL INTERESTS HAVE BEEN CONSOLIDATED OR A NON-STANDARD UNIT HAS BEEN APPROVED BY THE DIVISION									
						OPERATOR CERTIFICATION I hereby certify that the information contained herein is true and complete to the best of my knowledge and belief.			
						Signature Randy Jackson			
						Printed Name Randy Jackson			
						Title District Engineer			
						Date 03/10/95			
						SURVEYOR CERTIFICATION I hereby certify that the well location shown on this plat was plotted from field notes of actual surveys made by me or under my supervision, and that the same is true and correct to the best of my belief.			
						Date of Survey NOVEMBER 4, 1994			
						Signature and Seal of Professional Surveyor V. LYNN BEZNER NO. 7920			
						Certifying No. V. LYNN BEZNER LAND SURV. #7920			
JOB #35908-50-1-88 SW / V.H.B.									

UNITED STATES
DEPARTMENT OF THE INTERIOR
BUREAU OF LAND MANAGEMENT

SUBMIT IN TRIPLICATE*
(See other instructions on
reverse side)

OPERATOR'S COPY
Form approved.

APPLICATION FOR PERMIT TO DRILL OR DEEPEN

1a TYPE OF WORK: DRILL ☒ DEEPEN ☐

b. TYPE OF WELL:

OIL WELL ☒ GAS WELL ☐ Other ☐ SINGLE ZONE ☐ MULTIPLE ZONE ☐

2 NAME OF OPERATOR

DEVON ENERGY OPERATING CORPORATION

3. ADDRESS AND TELEPHONE NO.

20 N. BROADWAY, SUITE 1500, OKC, OK 73102 (405) 552-4560

4. LOCATION OF WELL (Report location clearly and in accordance with any State requirements)*

At surface 1338' FSL & 1330' FEL UNORTHDOX

At top proposed prod. zone (SAME)

LOCATION?

Subject to
Like Approval
By State

5. LEASE DESIGNATION AND SERIAL NO.
LC 029426-B

6. IF INDIAN, ALLOTTEE OR TRIBE NAME
NA

7. UNIT AGREEMENT NAME
NA

8. FARM OR LEASE NAME, WELL NO.
H. E. WEST "B" #76

9. API WELL NO.

10. FIELD AND POOL, OR WILDCAT
GRAYBURG-JACKSON

11. SEC., T., R., M., OR BLOCK AND SURVEY OR AREA
SECTION 3-T17 S- R31 E

12. COUNTY OR PARISH
EDDY

13. STATE
NM

14. DISTANCE IN MILES AND DIRECTION FROM NEAREST TOWN OR POST OFFICE*

4 miles east & 4 miles north of Loco Hills, N.M.

15. DISTANCE FROM PROPOSED
LOCATION TO NEAREST

PROPERTY OR LEASE LINE, FT. 1302

(Also to nearest dip. unit line if any)

18. DISTANCE FROM PROPOSED LOCATION*

TO NEAREST WELL, DRILLING, COMPLETED,
OR APPLIED FOR, ON THIS LEASE, FT. 900'

16. NO. OF ACRES IN LEASE
1919.88

19. PROPOSED DEPTH
4400

17. NO. OF ACRES ASSIGNED
TO THIS WELL
40

20. ROTARY OR CABLE TOOLS*
Rotary

21. ELEVATIONS (Show whether DF, RT, GR, etc.)

3952' GR

22. APPROX. DATE WORK WILL START*
March 15, 1995

23. PROPOSED CASING AND CEMENTING PROGRAM

SIZE OF HOLE	GRADE, SIZE OF CASING	WEIGHT PER FOOT	SETTING DEPTH	QUANTITY OF CEMENT
12 1/4"	8 5/8" J-55	24.0#	600' CIRCULATE	200 sk RFC cmt + 200 sk Class "C"
7 7/8"	5 1/2" J-55	15.5#	4400'	500 sk Class "C" 35/65 + 500 sk Class "C" + 1/4 lb/sk cellophane flakes

We plan to circulate cement to surface on all casing strings. Devon Energy Operating Corporation proposes to drill to 4400' to test the Grayburg-Jackson formation for commercial quantities of oil. If the Grayburg-Jackson is deemed non-commercial, the wellbore will be plugged and abandoned per Federal Regulations. Programs to adhere to onshore oil and gas regulations are outlined in the following exhibits and attachments.

Drilling Program

Exhibits #1/1-A = Blowout Prevention Equipment

Exhibit #2 = Location and Elevation Plat

Exhibit #3/3-A = Road Map and Topo Map

Exhibit #4 = Wells Within 1 Mile Radius

Exhibit #5 = Production Facilities Plat

Exhibit #6 = Rotary Rig Layout

Exhibit #7 = Casing Design Approval Subject to

H2S Operating Plan

General Requirements and
Special Stipulations
Attached

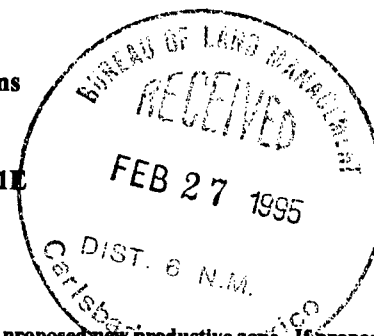
The undersigned accepts all applicable terms, condition, stipulations and restrictions concerning operations conducted on the leased land or portions thereof, as described below:

Lease No. LC029426-B

Legal Description: Section 3-T17N-R31E

Bond Coverage: Nationwide

BLM Bond No.: CO1151



IN ABOVE SPACE DESCRIBE PROPOSED PROGRAM: If proposal is to deepen, give data on present productive zone and proposed new productive zone. If proposal is to drill or deepen directionally, give pertinent data on subsurface locations and measured and true vertical depths. Give blowout prevention program, if any.

SIGNED Randy Jackson

TITLE RANDY JACKSON
DISTRICT ENGINEER

DATE 2/25/95

*(This space for Federal or State office use)

PERMIT NO. _____ APPROVAL DATE _____

Application approval does not warrant or certify that the applicant holds legal or equitable title to those rights in the subject lease which would entitle the applicant to conduct operations thereon. CONDITIONS OF APPROVAL, IF ANY:

APPROVED BY Uplanda V. G. TITLE Acting
AREA ENGINEER

See Instructions On Reverse Side

DATE 4-13-95

Title 18 U.S.C. Section 1001, makes it a crime for any person knowingly and willfully to make to any department or agency of the United States any false, fictitious or fraudulent statements or representations as to any matter within its jurisdiction

DISTRICT I
P. O. Box 1980
Hobbs, NM 88241-1980

State of New Mexico
Energy, Minerals, and Natural Resources Department

Form C-102
Revised 02-10-94

Instructions on back

DISTRICT II
P. O. Drawer DD
Artesia, NM 88211-0719

OIL CONSERVATION DIVISION

P. O. Box 2088
Santa Fe, New Mexico 87504-2088

Submit to the Appropriate
District Office
State Lease - 4 copies
Fee Lease - 3 copies

☐ AMENDED REPORT

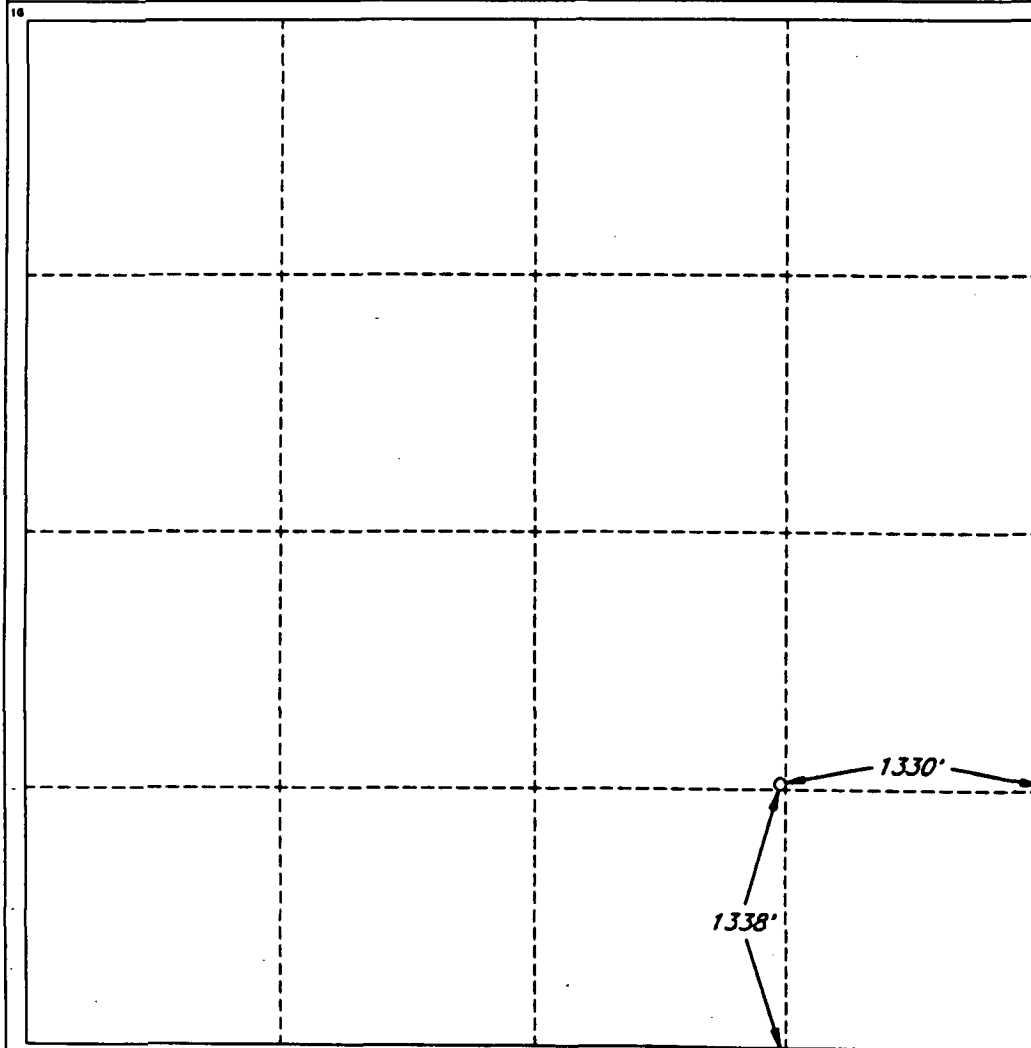
DISTRICT III
1000 Rio Brazos Rd.
Aztec, NM 87410

DISTRICT IV
P. O. Box 2088
Santa Fe, NM 87507-2088

WELL LOCATION AND ACREAGE DEDICATION PLAT

1 API Number		2 Pool Code		3 Pool Name Grayburg Jackson					
4 Property Code J		5 Property Name WEST 'B' FEDERAL						6 Well Number 76	
7 OGRID No.		8 Operator Name DEVON ENERGY OPERATING COMPANY						9 Elevation 3952'	
10 SURFACE LOCATION									
UL or lot no.	Section	Township	Range	Lot Ida	Feet from the	North/South line	Feet from the	East/West line	County
	3	17 SOUTH	31 EAST, N.M.P.M.		1338'	SOUTH	1330'	EAST	EDDY
11 BOTTOM HOLE LOCATION IF DIFFERENT FROM SURFACE									
UL or lot no.	Section	Township	Range	Lot Ida	Feet from the	North/South line	Feet from the	East/West line	County
12 Dedicated Acres 40		13 Joint or Infill		14 Consolidation Code		15 Order No.			

☒ NO ALLOWABLE WELL BE ASSIGNED TO THIS COMPLETION UNTIL ALL INTERESTS HAVE BEEN CONSOLIDATED OR A NON-STANDARD UNIT HAS BEEN APPROVED BY THE DIVISION



OPERATOR CERTIFICATION

I hereby certify that the information contained herein is true and complete to the best of my knowledge and belief.

Signature

Randy Jackson

Printed Name

Randy Jackson

Title

District Engineer

Date

3/10/95

SURVEYOR CERTIFICATION

I hereby certify that the well location shown on this plat was plotted from field notes of actual surveys made by me or under my supervision, and that the same is true and correct to the best of my belief.

Date of Survey

OCTOBER 24, 1994

Signature and Seal of
Professional Surveyor

STATE OF NEW MEXICO
LYNN
BEZNER
NO. 7920
V. L. BEZNER
JAN 9 1995
JOB #35908-4 98 SE / V.H.B.

UNITED STATES
DEPARTMENT OF THE INTERIOR
BUREAU OF LAND MANAGEMENT

SUBMIT IN TRIPLICATE*
(See other instructions on
reverse side)

OPERATOR'S COPY
Form approved.

APPLICATION FOR PERMIT TO DRILL OR DEEPEN

1a. TYPE OF WORK: DRILL ☒ DEEPEN ☐

1b. TYPE OF WELL: OIL WELL ☒ GAS WELL ☐ Other ☐ SINGLE ZONE ☐ MULTIPLE ZONE ☐

2. NAME OF OPERATOR
DEVON ENERGY OPERATING CORPORATION

3. ADDRESS AND TELEPHONE NO.
20 N. BROADWAY, SUITE 1500, OKC, OK 73102 (405) 552-4560

4. LOCATION OF WELL (Report location clearly and in accordance with any State requirements)*
At surface 1310' FSL & 1308' FWL UNORTHODOX Subject to
LOCATION: Like Approval
At top proposed prod. zone (SAME) By State

14. DISTANCE IN MILES AND DIRECTION FROM NEAREST TOWN OR POST OFFICE*
4 miles east & 4 miles north of Loco Hills, N.M.

15. DISTANCE FROM PROPOSED LOCATION TO NEAREST PROPERTY OR LEASE LINE, FT. 1308
(Also to nearest drg. unit line if any)
16. NO. OF ACRES IN LEASE 1919.88

18. DISTANCE FROM PROPOSED LOCATION* TO NEAREST WELL, DRILLING, COMPLETED, OR APPLIED FOR, ON THIS LEASE, FT. 900'
19. PROPOSED DEPTH 4400'

21. ELEVATIONS (Show whether DF, RT, GR, etc.)
3904' GR

5. LEASE DESIGNATION AND SERIAL NO.
LC 029426-B

6. IF INDIAN, ALLOTTEE OR TRIBE NAME
NA

7. UNIT AGREEMENT NAME
NA

8. FARM OR LEASE NAME, WELL NO.
WEST "B" #87

9. API WELL NO.

10. FIELD AND POOL, OR WILDCAT
GRAYBURG-JACKSON

11. SEC., T., R., M., OR BLOCK AND SURVEY OR AREA
SECTION 4-T17 S - R31 E

12. COUNTY OR PARISH
EDDY

13. STATE
NM

17. NO. OF ACRES ASSIGNED TO THIS WELL
40

20. ROTARY OR CABLE TOOLS*
Rotary

22. APPROX. DATE WORK WILL START*
March 30, 1995

23. PROPOSED CASING AND CEMENTING PROGRAM				
SIZE OF HOLE	GRADE, SIZE OF CASING	WEIGHT PER FOOT	SETTING DEPTH	QUANTITY OF CEMENT
12 1/4"	8 5/8" J-55	24.0#	600'	200 sk RFC cmt + 200 sk Class "C"
7 7/8"	5 1/2" J-55	15.5#	4400'	500 sk Class "C" 35/65 + 500 sk Class "C" + 1/4 lb/sk cellophane flakes

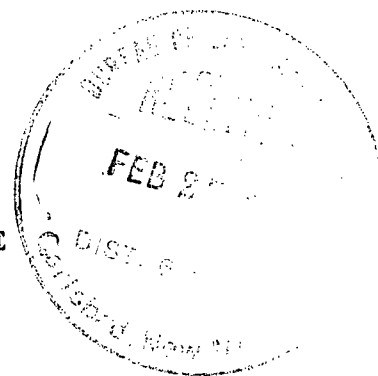
We plan to circulate cement to surface on all casing strings. Devon Energy Operating Corporation proposes to drill to 4400' to test the Grayburg-Jackson formation for commercial quantities of oil. If the Grayburg-Jackson is deemed non-commercial, the wellbore will be plugged and abandoned per Federal Regulations. Programs to adhere to onshore oil and gas regulations are outlined in the following exhibits and attachments.

Drilling Program

Exhibits #1/1-A = Blowout Prevention Equipment
Exhibit #2 = Location and Elevation Plat
Exhibit #3/3-A = Road Map and Topo Map
Exhibit #4 = Wells Within 1 Mile Radius
Exhibit #5 = Production Facilities Plat
Exhibit #6 = Rotary Rig Layout
Exhibit #7 = Casing Design
H2S Operating Plan

The undersigned accepts all applicable terms, condition, stipulations and restrictions concerning operations conducted on the leased land or portions thereof, as described below:
Lease No. LC029426-B
Legal Description: Section 4-T17N-R31E
Bond Coverage: Nationwide
BLM Bond No.: CO1151

Approval Subject to
General Requirements and
Special Stipulations
Attached



IN ABOVE SPACE DESCRIBE PROPOSED PROGRAM: If proposal is to deepen, give data on present productive zone and proposed new productive zone. If proposal is to drill or deepen directionally, give pertinent data on subsurface locations and measured and true vertical depths. Give blowout preventer program, if any.

24.

SIGNED Randy Jackson

TITLE RANDY JACKSON
DISTRICT ENGINEER

DATE 2/24/95

*(This space for Federal or State office use)

PERMIT NO. _____ APPROVAL DATE _____

Application approval does not warrant or certify that the applicant holds legal or equitable title to those rights in the subject lease which would entitle the applicant to conduct operations thereon.
CONDITIONS OF APPROVAL, IF ANY:

APPROVED BY [Signature] TITLE Acting DISTRICT ENGINEER DATE 4-13-95
See Instructions On Reverse Side

Title 18 U.S.C. Section 1001, makes it a crime for any person knowingly and willfully to make to any department or agency of the United States any false, fictitious or fraudulent statements or representations as to any matter within its jurisdiction

DISTRICT I
P. O. Box 1980
Hobbs, NM 88241-1980

State of New Mexico
Energy, Minerals, and Natural Resources Department

Form C-102
Revised 02-10-94
Instructions on back

DISTRICT II
P. O. Drawer DD
Artesia, NM 88211-0719

OIL CONSERVATION DIVISION

P. O. Box 2088
Santa Fe, New Mexico 87504-2088

Submit to the Appropriate
District Office
State Lease - 4 copies
Fee Lease - 3 copies

☐ AMENDED REPORT

DISTRICT III
1000 Rio Brazos Rd.
Aztec, NM 87410

DISTRICT IV
P. O. Box 2088
Santa Fe, NM 87507-2088

WELL LOCATION AND ACREAGE DEDICATION PLAT

1 API Number		2 Pool Code		3 Pool Name Grayburg Jackson		
4 Property Code A		5 Property Name WEST 'B' FEDERAL			6 Well Number 87	
7 OGRID No.		8 Operator Name DEVON ENERGY OPERATING COMPANY			9 Elevation 3904'	

10 SURFACE LOCATION

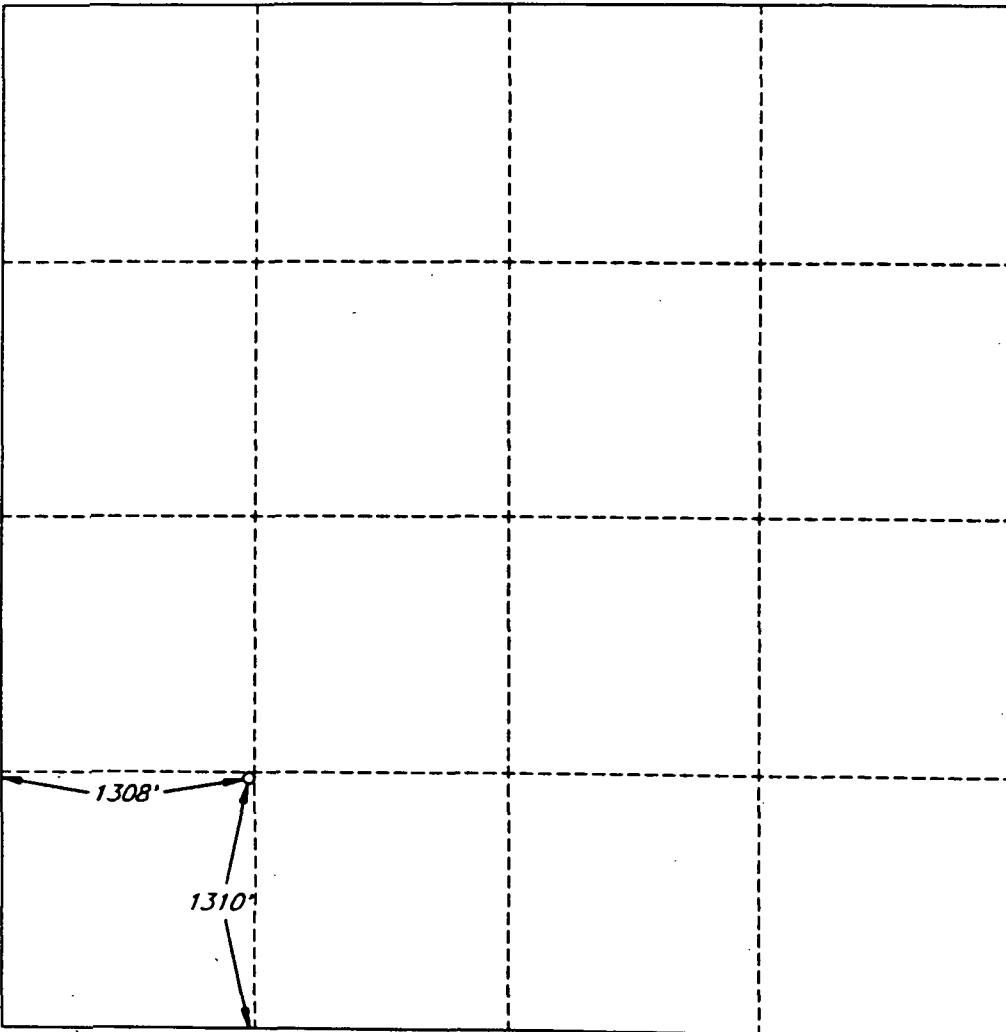
UL or lot no. M	Section 4	Township 17 SOUTH	Range 31 EAST, N.M.P.M.	Lot Ida	Feet from the 1310'	North/South line SOUTH	Feet from the 1308'	East/West line WEST	County EDDY
--------------------	--------------	----------------------	----------------------------	---------	------------------------	---------------------------	------------------------	------------------------	----------------

11 BOTTOM HOLE LOCATION IF DIFFERENT FROM SURFACE

UL or lot no.	Section	Township	Range	Lot Ida	Feet from the	North/South line	Feet from the	East/West line	County
---------------	---------	----------	-------	---------	---------------	------------------	---------------	----------------	--------

12 Dedicated Acres 40	13 Joint or Infill	14 Consolidation Code	15 Order No.
--------------------------	--------------------	-----------------------	--------------

NO ALLOWABLE WELL BE ASSIGNED TO THIS COMPLETION UNTIL ALL INTERESTS HAVE BEEN CONSOLIDATED OR A NON-STANDARD UNIT HAS BEEN APPROVED BY THE DIVISION

OPERATOR CERTIFICATION

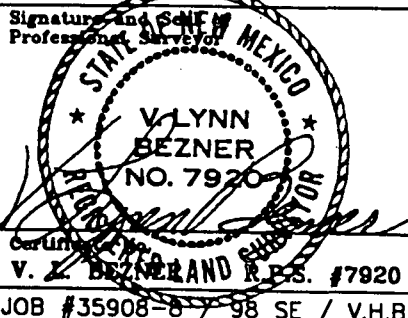
I hereby certify that the information contained herein is true and complete to the best of my knowledge and belief.

Signature
Randy Jackson
Printed Name
Randy Jackson
Title
District Engineer
Date
3/10/95

SURVEYOR CERTIFICATION

I hereby certify that the well location shown on this plat was plotted from field notes of actual surveys made by me or under my supervision, and that the same is true and correct to the best of my belief.

Date of Survey
NOVEMBER 10, 1994

Signature and Seal of Professional Surveyor

V. L. BEZNER AND P.S. #7920
JOB #35908-87-98 SE / V.H.B.

UNITED STATES
DEPARTMENT OF THE INTERIOR
BUREAU OF LAND MANAGEMENT

SUBMIT IN TRIPLICATE*

(See other instructions on
reverse side)

OPERATOR'S COPY
Form approved.

APPLICATION FOR PERMIT TO DRILL OR DEEPEN

1a TYPE OF WORK: DRILL ☒ DEEPEN ☐

b TYPE OF WELL:

OIL WELL ☒ GAS WELL ☐ Other ☐ SINGLE ZONE ☐ MULTIPLE ZONE ☐

2 NAME OF OPERATOR

DEVON ENERGY OPERATING CORPORATION

3 ADDRESS AND TELEPHONE NO.

20 N. BROADWAY, SUITE 1500, OKC, OK 73102 (405) 552-4560

4 LOCATION OF WELL (Report location clearly and in accordance with any State requirements)*

At surface 1345' FNL & 1194 FEL UNORTHODOX

At top proposed prod. zone (SAME)

Subject to
Like Approval
By State

14 DISTANCE IN MILES AND DIRECTION FROM NEAREST TOWN OR POST OFFICE*

4 miles east & 4 miles north of Loco Hills, N.M.

5 LEASE DESIGNATION AND SERIAL NO.
LC 029426-A

6 IF INDIAN, ALLOTTEE OR TRIBE NAME
NA

7 UNIT AGREEMENT NAME
NA

8 FARM OR LEASE NAME, WELL NO.
H. E. WEST "A" #29

9 API WELL NO.

10 FIELD AND POOL, OR WILDCAT
GRAYBURG-JACKSON

11 SEC., T., R., M., OR BLOCK AND SURVEY OR AREA
SECTION 4-T17 S - R31 E

12 COUNTY OR PARISH
EDDY

13 STATE
NM

15 DISTANCE FROM PROPOSED
LOCATION TO NEAREST

PROPERTY OR LEASE LINE, FT. 1345
(Also to nearest drg. unit line if any)

16 NO. OF ACRES IN LEASE
639.56

17 NO. OF ACRES ASSIGNED
TO THIS WELL
40

18 DISTANCE FROM PROPOSED LOCATION*

TO NEAREST WELL, DRILLING, COMPLETED,
OR APPLIED FOR, ON THIS LEASE, FT. 900'

19 PROPOSED DEPTH
4400

20 ROTARY OR CABLE TOOLS*
Rotary

21 ELEVATIONS (Show whether DF, RT, GR, etc.)

3946' GR

22 APPROX. DATE WORK WILL START*
March 15, 1995

23. PROPOSED CASING AND CEMENTING PROGRAM

SIZE OF HOLE	GRADE, SIZE OF CASING	WEIGHT PER FOOT	SETTING DEPTH	QUANTITY OF CEMENT
12 1/4"	8 5/8" J-55	24.0#	600' CIRCULATE	200 sk RFC cmt + 200 sk Class "C"
7 7/8"	5 1/2" J-55	15.5#	4400'	500 sk Class "C" 35/65 + 500 sk Class "C" + 1/4 lb/sk cellophane flakes

We plan to circulate cement to surface on all casing strings. Devon Energy Operating Corporation proposes to drill to 4400' to test the Grayburg-Jackson formation for commercial quantities of oil. If the Grayburg-Jackson is deemed non-commercial, the wellbore will be plugged and abandoned per Federal Regulations. Programs to adhere to onshore oil and gas regulations are outlined in the following exhibits and attachments.

Drilling Program

- Exhibits #1/1-A = Blowout Prevention Equipment
- Exhibit #2 = Location and Elevation Plat
- Exhibit #3/3-A = Road Map and Topo Map
- Exhibit #4 = Wells Within 1 Mile Radius
- Exhibit #5 = Production Facilities Plat
- Exhibit #6 = Rotary Rig Layout
- Exhibit #7 = Casing Design

H2S Operating Plan

The undersigned accepts all applicable terms, condition, stipulations and restrictions concerning operations conducted on the leased land or portions thereof, as described below:
Lease No. LC029426-A
Legal Description: Section 4-T17N-R31E
Bond Coverage: Nationwide
BLM Bond No.: CO1151

Approval Subject to
General Requirements and
Special Stipulations
Attached



IN ABOVE SPACE DESCRIBE PROPOSED PROGRAM: If proposal is to deepen, give data on present productive zone and proposed new productive zone. If proposal is to drill or deepen directionally, give pertinent data on subsurface locations and measured and true vertical depths. Give blowout preventer program, if any.

24.

SIGNED Randy Jackson

RANDY JACKSON
TITLE DISTRICT ENGINEER

DATE 2/24/95

*(This space for Federal or State office use)

PERMIT NO. _____

APPROVAL DATE _____

Application approval does not warrant or certify that the applicant holds legal or equitable title to those rights in the subject lease which would entitle the applicant to conduct operations thereon.
CONDITIONS OF APPROVAL, IF ANY:

APPROVED BY Amanda Vega

TITLE Acting District Engineer

DATE 4-13-95

See Instructions On Reverse Side

Title 18 U.S.C. Section 1001, makes it a crime for any person knowingly and willfully to make to any department or agency of the United States any false, fictitious or fraudulent statements or representations as to any matter within its jurisdiction

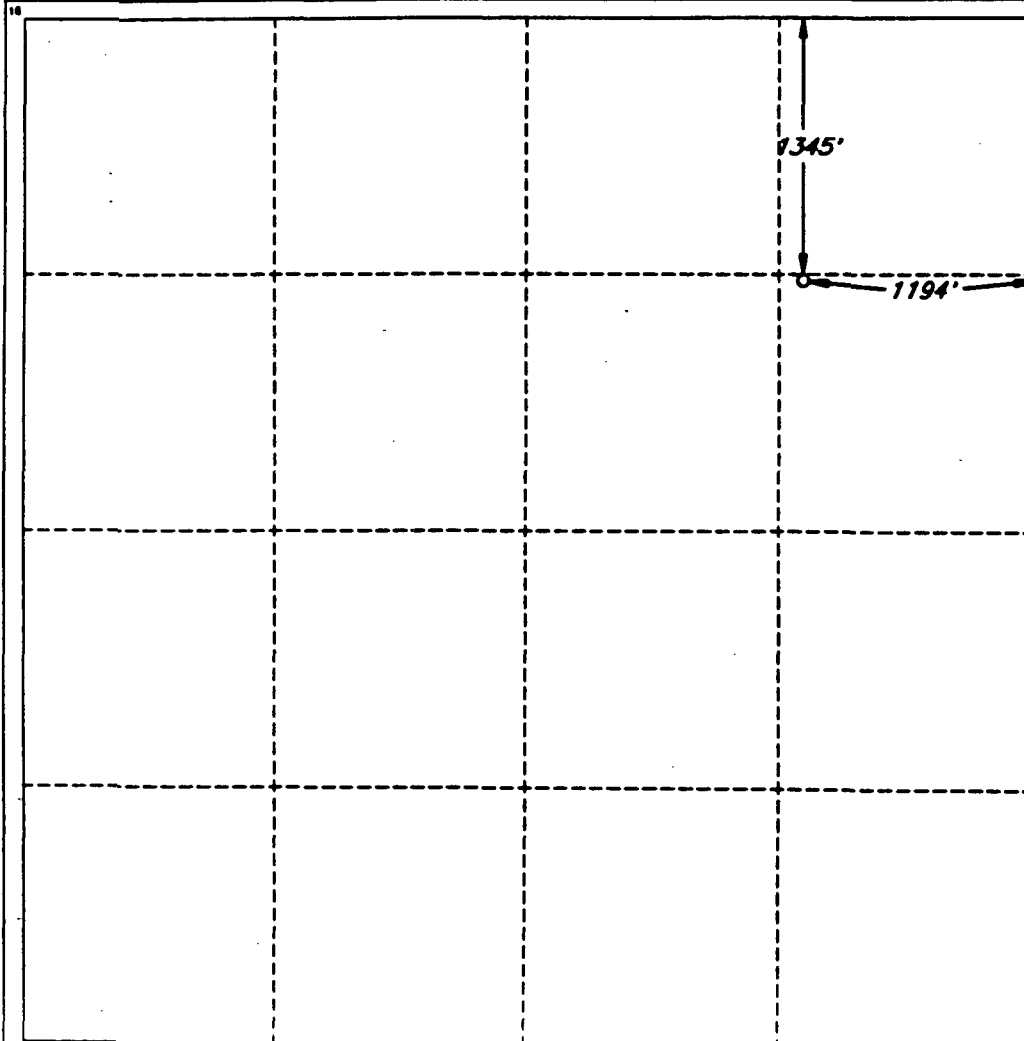
1-1980

RECEIVED

Submit to the Appropriate
District Office
State Lease - 4 copies
Fee Lease - 3 copiesTower DD
Aztec, NM 88211-0719DISTRICT III
1000 Rio Brazos Rd.
Aztec, NM 87410DISTRICT IV
P. O. Box 2088
Santa Fe, NM 87507-2088MINERAL CONSERVATION DIVISION
P. O. Box 2088
Santa Fe, New Mexico 87504-2088☐ AMENDED REPORT

WELL LOCATION AND ACREAGE DEDICATION PLAT

API Number		Pool Code		Pool Name Grayburg Jackson					
Property Code		Property Name WEST 'A' FEDERAL						Well Number 29	
OGRID No.		Operator Name DEVON ENERGY OPERATING COMPANY						Elevation 3946'	
SURFACE LOCATION									
UL or lot no. H	Section 4	Township 17 SOUTH	Range 31 EAST, N.M.P.M.	Lot Ida	Feet from the 1345'	North/South line NORTH	Feet from the 1194'	East/West line EAST	County EDDY
BOTTOM HOLE LOCATION IF DIFFERENT FROM SURFACE									
UL or lot no.	Section	Township	Range	Lot Ida	Feet from the	North/South line	Feet from the	East/West line	County
Dedicated Acres .40		Joint or Infill		Consolidation Code		Order No.			

NO ALLOWABLE WELL BE ASSIGNED TO THIS COMPLETION UNTIL ALL INTERESTS HAVE BEEN
CONSOLIDATED OR A NON-STANDARD UNIT HAS BEEN APPROVED BY THE DIVISION

OPERATOR CERTIFICATION

I hereby certify that the information
contained herein is true and complete
to the best of my knowledge and belief.

Signature

Randy Jackson

Printed Name

Randy Jackson

Title

District Engineer

Date

4/5/95

SURVEYOR CERTIFICATION

I hereby certify that the well
location shown on this plat was
plotted from field notes of actual
surveys made by me or under
my supervision, and that the
same is true and correct to the
best of my belief.

Date of Survey

NOVEMBER 1, 1994

Signature and Seal of
Professional Surveyor

V. L. BEZNER
NO. 7920
V. L. BEZNER
LAND SURVEYOR
#7920

JOB #35908-9 / 98 SW / V.H.B.

UNITED STATES OPERATOR'S COPY
DEPARTMENT OF THE INTERIOR
BUREAU OF LAND MANAGEMENT

(See other instructions on
reverse side)

Form approved.

APPLICATION FOR PERMIT TO DRILL OR DEEPEN

1a TYPE OF WORK: DRILL ☒ DEEPEN ☐

b TYPE OF WELL:

OIL WELL ☒ GAS WELL ☐ Other ☐ SINGLE ZONE ☐ MULTIPLE ZONE ☐

2 NAME OF OPERATOR

DEVON ENERGY OPERATING CORPORATION

3. ADDRESS AND TELEPHONE NO.

20 N. BROADWAY, SUITE 1500, OKC, OK 73102 (405) 552-4560

4. LOCATION OF WELL (Report location clearly and in accordance with any State requirements)*

At surface 1310' FNL & 2630' FWL

1560' 2580'

UNORTHODOX
LOCATION

Subject to
LHA Approval
By State

At top proposed prod. zone (SAME)

14. DISTANCE IN MILES AND DIRECTION FROM NEAREST TOWN OR POST OFFICE*

4 miles east & 4 miles north of Loco Hills, N.M.

5. LEASE DESIGNATION AND SERIAL NO..
LC 029426-A

6. IF INDIAN, ALLOTTEE OR TRIBE NAME
NA

7. UNIT AGREEMENT NAME
NA

8. FARM OR LEASE NAME, WELL NO.
WEST "A" #30

9. API WELL NO.

10. FIELD AND POOL, OR WILDCAT
GRAYBURG-JACKSON

11. SEC., T., R., M., OR BLOCK AND SURVEY OR AREA
SECTION 3-T17 S - R31 E

12. COUNTY OR PARISH
EDDY

13. STATE
NM

15. DISTANCE FROM PROPOSED
LOCATION TO NEAREST

PROPERTY OR LEASE LINE, FT. 1310

(Also to nearest drg. unit line if any)

18. DISTANCE FROM PROPOSED LOCATION*

TO NEAREST WELL, DRILLING, COMPLETED,

OR APPLIED FOR, ON THIS LEASE, FT. 550'

16. NO. OF ACRES IN LEASE
639.56

19. PROPOSED DEPTH
4400

17. NO. OF ACRES ASSIGNED
TO THIS WELL
40

20. ROTARY OR CABLE TOOLS*
Rotary

21. ELEVATIONS (Show whether DF, RT, GR, etc.)

3979 GR

22. APPROX. DATE WORK WILL START*
January 1, 1995

23. PROPOSED CASING AND CEMENTING PROGRAM

SIZE OF HOLE	GRADE, SIZE OF CASING	WEIGHT PER FOOT	SETTING DEPTH	QUANTITY OF CEMENT
12 1/4"	8 5/8" J-55	24.0#	600' CIRCULATE	165 sk lite cmt + 200 sk Class "C"
7 7/8"	5 1/2" J-55	15.5#	4400'	500 sk Class "C" 35/65 + 500 sk Class "C" + 1/4 lb/sk cellophane flakes

We plan to circulate cement to surface on all casing strings. Devon Energy Operating Corporation proposes to drill to 4400' to test the Grayburg-Jackson formation for commercial quantities of oil. If the Grayburg-Jackson is deemed non-commercial, the wellbore will be plugged and abandoned per Federal Regulations. Programs to adhere to onshore oil and gas regulations are outlined in the following exhibits and attachments.

Drilling Program

Exhibits #1/1-A = Blowout Prevention Equipment

Exhibit #2 = Location and Elevation Plat

Exhibit #3/3-A = Road Map and Topo Map

Exhibit #4 = Wells Within 1 Mile Radius

Exhibit #5 = Production Facilities Plat

Exhibit #6 = Rotary Rig Layout

Exhibit #7 = Casing Design

H2S Operating Plan

The undersigned accepts all applicable terms, condition, stipulations and restrictions concerning operations conducted on the leased land or portions thereof, as described below:

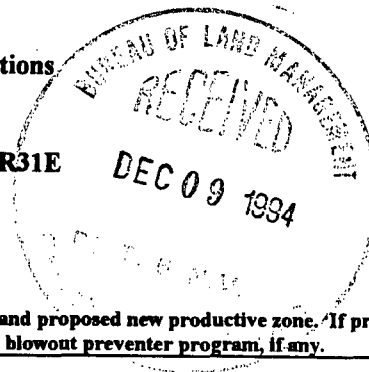
Lease No. LC029426-A

Legal Description: Section 3-T17N-R31E

Bond Coverage: Nationwide

Bond No.: CO1151

Approval Subject to
General Requirements
Special Stipulations
Attached



IN ABOVE SPACE DESCRIBE PROPOSED PROGRAM: If proposal is to deepen, give data on present productive zone and proposed new productive zone. If proposal is to drill or deepen directionally, give pertinent data on subsurface locations and measured and true vertical depths. Give blowout preventer program, if any.

24.

SIGNED Randy Jackson

TITLE RANDY JACKSON
DISTRICT ENGINEER

DATE 12/6/94

*(This space for Federal or State office use)

PERMIT NO. _____ APPROVAL DATE _____

Application approval does not warrant or certify that the applicant holds legal or equitable title to those rights in the subject lease which would entitle the applicant to conduct operations thereon. CONDITIONS OF APPROVAL, IF ANY:

APPROVED BY Uplanda Vega

TITLE Acting AREA MANAGER

DATE 4-13-95

See Instructions On Reverse Side

Title 18 U.S.C. Section 1001, makes it a crime for any person knowingly and willfully to make to any department or agency of the United States any false, fictitious or fraudulent statements or representations as to any matter within its jurisdiction

DISTRICT I
P. O. Box 1980
Hobbs, NM 88241-1980

State of New Mexico
Energy, Minerals, and Natural Resources Department

Form C-102
Revised 02-10-94

Instructions on back

DISTRICT II
P. O. Drawer DD
Artesia, NM 88211-0719

DISTRICT III
1000 Rio Brazos Rd.
Aztec, NM 87410

DISTRICT IV
P. O. Box 2088
Santa Fe, NM 87507-2088

RECEIVED

APR 10 11 41 AM '95

CARL
AREA HEADQUARTERS

OIL CONSERVATION DIVISION

P. O. Box 2088
Santa Fe, New Mexico 87504-2088

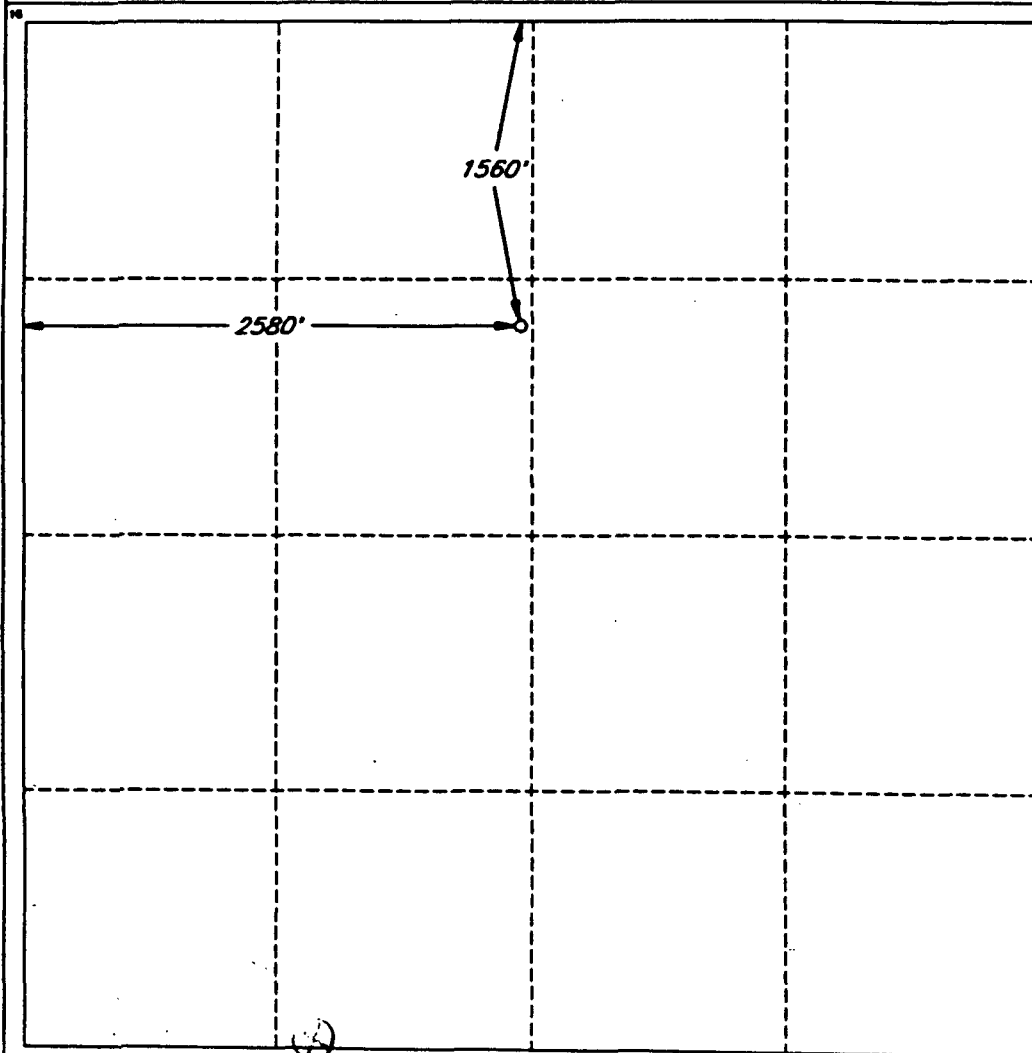
Submit to the Appropriate
District Office
State Lease - 4 copies
Fee Lease - 3 copies

☐ AMENDED REPORT

WELL LOCATION AND ACREAGE DEDICATION PLAT

1 API Number		2 Pool Code		3 Pool Name Grayburg Jackson					
4 Property Code		5 Property Name WEST 'A' FEDERAL						6 Well Number 30	
7 OGRID No.		8 Operator Name DEVON ENERGY OPERATING COMPANY						9 Elevation 3977'	
* SURFACE LOCATION									
UL or lot no. F	Section 3	Township 17 SOUTH	Range 31 EAST, N.M.P.M.	Lot Ida	Feet from the 1560'	North/South line NORTH	Feet from the 2580'	East/West line WEST	County EDDY
"BOTTOM HOLE LOCATION IF DIFFERENT FROM SURFACE									
UL or lot no.	Section	Township	Range	Lot Ida	Feet from the	North/South line	Feet from the	East/West line	County
12 Dedicated Acres 40		13 Joint or Infill		14 Consolidation Code		15 Order No.			

NO ALLOWABLE WELL BE ASSIGNED TO THIS COMPLETION UNTIL ALL INTERESTS HAVE BEEN
CONSOLIDATED OR A NON-STANDARD UNIT HAS BEEN APPROVED BY THE DIVISION



OPERATOR CERTIFICATION

I hereby certify that the information
contained herein is true and complete
to the best of my knowledge and belief.

Signature

Randy Jackson

Printed Name

Randy Jackson

Title

District Engineer

Date

April 5, 1995

SURVEYOR CERTIFICATION

I hereby certify that the well
location shown on this plat was
plotted from field notes of actual
surveys made by me or under
my supervision, and that the
same is true and correct to the
best of my belief.

Date of Survey

JANUARY 24, 1995

Signature and Seal of
Professional Surveyor

V. Lynn Bezner
STATE OF NEW MEXICO
V. LYNN BEZNER
NO. 7920
V. L. BEZNER R.P.S. #7920
JOB #37650 JAN 95 SE / V.H.B.

UNITED STATES
DEPARTMENT OF THE INTERIOR
BUREAU OF LAND MANAGEMENT

OPERATOR'S COPY

FORM APPROVED
Budget Bureau No. 1004-0135
Expires March 31, 1993

SUNDRY NOTICES AND REPORTS ON WELLS

Do not use this form for proposals to drill or to deepen or reentry to a different reservoir.
Use "APPLICATION FOR PERMIT—" for such proposals

SUBMIT IN TRIPLICATE

1. Type of Well

☒ Oil Well ☐ Gas Well ☐ Other

2. Name of Operator

DEVON ENERGY OPERATING CORPORATION

3. Address and Telephone No.

20 NORTH BROADWAY, SUITE 1500, OKLAHOMA CITY, OKLAHOMA 73102 (405)552-4527

4. Location of Well (Footage. Sec., T., R., M., or Survey Description)

100' FNL & 2460' FWL, Unit C, Sec. 7-T17S-R31E

5. Lease Designation and Serial No.

LC-029435-A

6. If Indian, Allottee or Tribe Name

NA

7. If Unit or CA, Agreement Designation

NA

8. Well Name and No.

J.L. KEEL "A" Fed. #36

9. API Well No.

10. Field and Pool, or Exploratory Area

Grayburg-Jackson

11. County or Parish, State

Eddy Co., NM

CHECK APPROPRIATE BOX(S) TO INDICATE NATURE OF NOTICE, REPORT, OR OTHER DATA

TYPE OF SUBMISSION	TYPE OF ACTION
<input checked="" type="checkbox"/> Notice of Intent	<input type="checkbox"/> Abandonment
<input type="checkbox"/> Subsequent Report	<input type="checkbox"/> Recompletion
<input type="checkbox"/> Final Abandonment Notice	<input type="checkbox"/> Plugging Back
	<input type="checkbox"/> Casing Repair
	<input type="checkbox"/> Altering Casing
	<input checked="" type="checkbox"/> Other <u>Change of name and location</u>
	<input type="checkbox"/> Change of Plans
	<input type="checkbox"/> New Construction
	<input type="checkbox"/> Non-Routine Fracturing
	<input type="checkbox"/> Water Shut-Off
	<input type="checkbox"/> Conversion to Injection
	<input type="checkbox"/> Dispose Water

(Note: Report results of multiple completion on Well Completion or Recompletion Report and Log form.)

13. Describe Proposed or Completed Operations (Clearly state all pertinent details, and give pertinent dates, including estimated date of starting any proposed work. If well is directionally drilled, give subsurface locations and measured and true vertical depths for all markers and zones pertinent to this work.)*

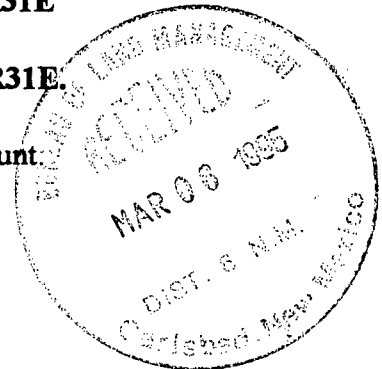
Please note that the Keel "B" #66 will be changed to the Keel "A" #36:

The location will be changed from 50 FSL & 2510 FWL, Sec. 6-T17S-R31E

to 100' FNL & 2460 FWL, Sec. 7-T17S-R31E.

I am enclosing 5 copies of the new plat, and have faxed a copy to Barry Hunt.

Please note the Keel "B" #66 will be replaced by the Keel "A" #36.



14. I hereby certify that the foregoing is true and correct

Signed Karen RosaTitle KAREN ROSA
ENGINEERING TECHNICIAN

Date 3/1/95

(This space for Federal or State office use)

Approved by Paul E. MannTitle AREA MANAGER

Date 4/11/95

Conditions of approval, if any:

Title 18 U.S.C. Section 1001, makes it a crime for any person knowingly and willfully to make to any department or agency of the United States any false, fictitious or fraudulent statements or representations as to any matter within its jurisdiction.

*See Instruction on Reverse Side

Box 1980
Artesia, NM 88241-1980

State of New Mexico
Energy, Minerals, and Natural Resources Department

Form C-102
Revised 02-10-94
Instructions on back

DISTRICT II
P. O. Drawer DD
Artesia, NM 88211-0719

DISTRICT III
1000 Rio Brazos Rd.
Aztec, NM 87410

DISTRICT IV
P. O. Box 2088
Santa Fe, NM 87507-2088

OIL CONSERVATION DIVISION
P. O. Box 2088
Santa Fe, New Mexico 87504-2088

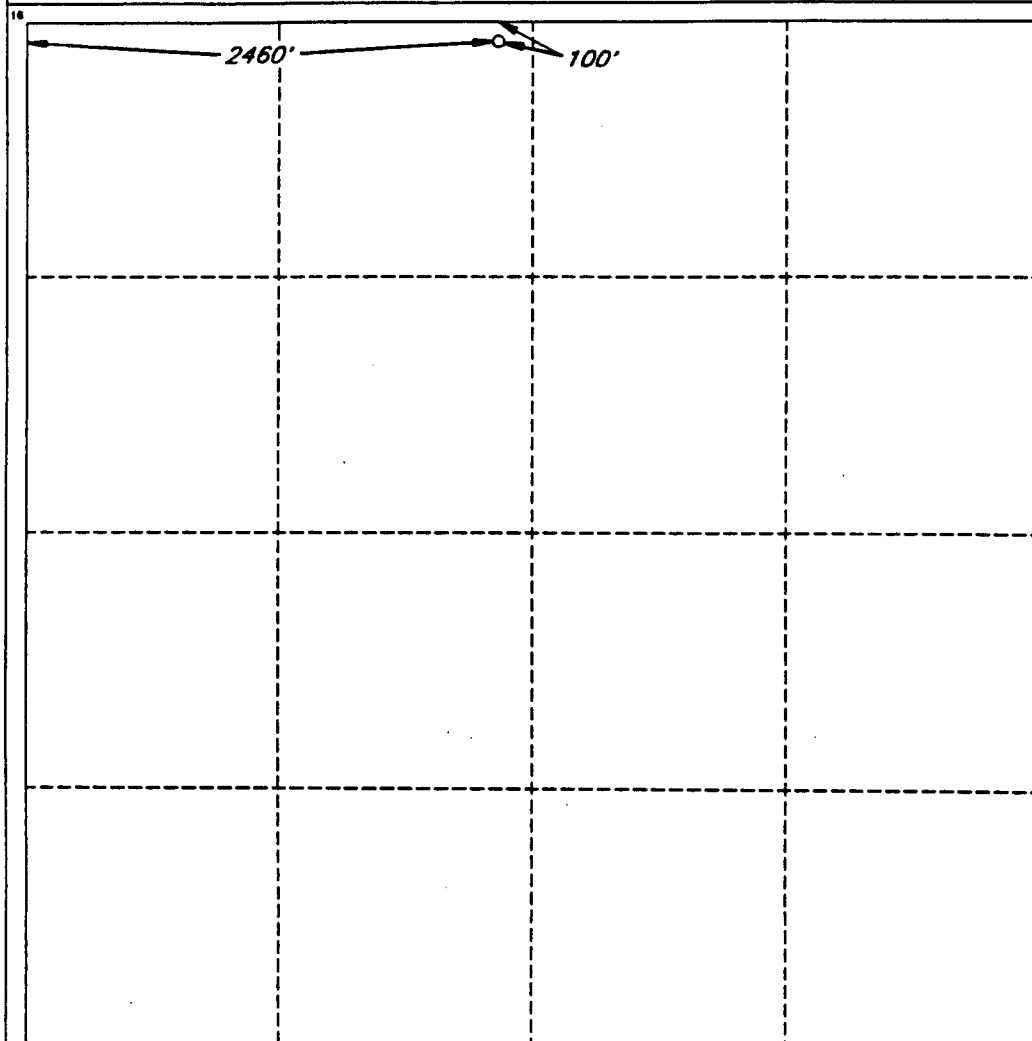
Submit to the Appropriate
District Office
State Lease - 4 copies
Fee Lease - 3 copies

☐ AMENDED REPORT

WELL LOCATION AND ACREAGE DEDICATION PLAT

1 API Number		2 Pool Code		3 Pool Name					
4 Property Code		5 Property Name KEEL 'A' FEDERAL						6 Well Number 36	
7 OGRID No.		8 Operator Name DEVON ENERGY OPERAING COMPANY						9 Elevation 3763'	
10 SURFACE LOCATION									
UL or lot no. C	Section 7	Township 17 SOUTH	Range 31 EAST, N.M.P.M.	Lot Ida	Feet from the 100'	North/South line NORTH	Feet from the 2460'	East/West line WEST	County EDDY
11 "BOTTOM HOLE LOCATION IF DIFFERENT FROM SURFACE"									
UL or lot no.	Section	Township	Range	Lot Ida	Feet from the	North/South line	Feet from the	East/West line	County
12 Dedicated Acres		13 Joint or Infill		14 Consolidation Code		15 Order No.			

NO ALLOWABLE WELL BE ASSIGNED TO THIS COMPLETION UNTIL ALL INTERESTS HAVE BEEN
CONSOLIDATED OR A NON-STANDARD UNIT HAS BEEN APPROVED BY THE DIVISION



OPERATOR CERTIFICATION

I hereby certify that the information
contained herein is true and complete
to the best of my knowledge and belief.

Signature

Randy Jackson

Printed Name

Randy Jackson

Title

District Engineer

Date

3/2/95

SURVEYOR CERTIFICATION

I hereby certify that the well
location shown on this plat was
plotted from field notes of actual
surveys made by me or under
my supervision, and that the
same is true and correct to the
best of my belief.

Date of Survey

JANUARY 24, 1995

Signature and Seal of
Professional Surveyor

V. Lynn Bezner
V. LYNN
BEZNER
NO. 7920

Certified by

V. L. BEZNER AND R.E.S. #7920

JOB #37642-2 / 98SE&SW / V.B.

NM OIL CONS. COMMISSION
DRAWER DD
ARTESIA, NEW MEXICO
UNITED STATES
DEPARTMENT OF THE INTERIOR
BUREAU OF LAND MANAGEMENTSUBMIT IN THE ATT
(Other instructions on
reverse side)Form approved
Budget Bureau No. 1004-0136
Expires: December 31, 1991

APPLICATION FOR PERMIT TO DRILL OR DEEPEN

1a. TYPE OF WORK DRILL <input checked="" type="checkbox"/> DEEPEN <input type="checkbox"/>			JAN 6 '95		
1b. TYPE OF WELL OIL WELL <input checked="" type="checkbox"/> GAS WELL <input type="checkbox"/> OTHER <input type="checkbox"/>			STIMULATED <input type="checkbox"/> O.C.D. <input type="checkbox"/> MULTIPLE <input type="checkbox"/>		
2. NAME OF OPERATOR DEVON ENERGY OPERATING CORPORATION			136025		
3. ADDRESS AND TELEPHONE 20 N. Broadway, Suite 1500, Oklahoma City, Oklahoma 73102 (405) 552-4530			Keel "B" Federal #66		
4. LOCATION OF WELL (Report location clearly and in accordance with any State requirements.) At surface 50' FSL & 2510' FWL At proposed prod. zone Non-standard Location... SUBJECT TO LIKE APPROVAL BY STATE			30-015-2295		
5. DISTANCE IN MILES AND DIRECTION FROM NEAREST TOWN OR POST OFFICE 4 Miles East and 4 miles North of Loco Hills, N.M. 460			10. FIELD AND POOL OR WELDCAT GRAYBURG-JACKSON 28500		
6. DISTANCE FROM NEAREST LOCATION TO NEAREST PROPERTY OR LEASE LINE (ft.) 50'			11. SEC. T. R. N. OR B.L. AND SURVEY OR AREA Sec. 6-T17S-R31E		
7. DISTANCE FROM PROPOSED LOCATION TO NEAREST WELL, DRILLING, COMPLETION, OR APPLIED FOR, ON THIS LEASE, FT. 1100'			12. COUNTY OR PARISH FIDY COUNTY		
8. ELEVATION (Show whether SF, RL, OR, etc.) 3764' GR			13. STATE NM		
9. PROPOSED Casing and Cementing Program					
SIZE OF HOLE	CASE RECOMMENDED	WEIGHT PER FOOT	SETTING DEPTH	QUANTITY OF CEMENT	
12 1/4"	8 5/8" J-55	24.04	400'	165 sk lite crt + 200 sk Class "C"	
7 7/8"	5 1/2" J-55	15.54	4000'	500 sk Class "C" 35/65 + 500 sk Class "C" + 1/4 lb/sk cellophane flakes	

We plan to circulate cement to surface on all casing strings. Devon Energy Operating Corporation proposes to drill to 4000' to test the Grayburg-Jackson formation for commercial quantities of oil. If the Grayburg-Jackson is deemed non-commercial, the wellbore will be plugged and abandoned per Federal Regulations. Programs to adhere to onshore oil and gas regulations are outlined in the following exhibits and attachments.

Drilling Program

- Exhibits #1/1-A = Blowout Prevention Equipment
- Exhibit #2 = Location and Elevation Plat
- Exhibit #3/3-A = Road Map and Topo Map
- Exhibit #4 = Wells Within 1 Mile Radius
- Exhibit #5 = Production Facilities Plat
- Exhibit #6 = Rotary Rig Layout
- Exhibit #7 = Casing Design
- H2S Operating Plan

The undersigned accepts all applicable terms, condition, stipulations and restrictions concerning operations conducted on the leased land or portions thereof, as described below:
Lease No. LC029435-B
Legal Description: Section 6 T17N-R31E
Bond Coverage: Nationwide
BLM Bond No.: PENDING

IN ABOVE SPACE DESCRIBE PROPOSED PROGRAM: If proposal is to deepen, give data on present productive zone and proposed new production zone. If proposal is to drill or deepen directionally, give pertinent data on subsurface formation and estimated and true vertical depths. Give blowout prevention program, if any.

SIGNED: Randy Jackson TITLE: DISTRICT ENGINEER DATE: September 22, 1994

(This space for Federal or State office use)

PERMIT NO. _____ APPROVAL DATE _____
Application approval does not warrant or certify that the applicant holds legal or equitable title to those rights in the subject lease which would entitle the applicant to conduct operations thereon.
CONDITIONS OF APPROVAL, IF ANY: _____

APPROVED BY: (CIRIG. RODA) RICHARD L. MARINO TITLE: AREA MANAGER DATE: 12/20/94

*See Instructions On Reverse Side

Submit to the Appropriate
District Office
State Lease - 4 copies
Fee Lease - 3 copies

OIL CONSERVATION DIVISION

P. O. Box 2088

Santa Fe, New Mexico 87504-2088

☐ AMENDED REPORT

241-1980

District III
1000 Rio Brazos Rd.
Aztec, NM 87410

District III

1000 Rio Brazos Rd.
Aztec, NM 87410

District IV

P. O. Box 2088

Santa Fe, NM 87507-2088

WELL LOCATION AND ACREAGE DEDICATION PLAT

API Number		Pool Code		Pool Name					
Property Code 0		Property Name KEEL 'B' FEDERAL				Well Number 66			
OGRID No.		Operator Name DEVON ENERGY OPERATING CORPORATION				Elevation 3764'			
SURFACE LOCATION									
UL or lot no. Y	Section 6	Township 17 SOUTH	Range 31 EAST, N.M.P.M.	Lot No.	Feet from the 50'	North/South line SOUTH	Feet from the 2510'	East/West line WEST	County EDDY
BOTTOM HOLE LOCATION IF DIFFERENT FROM SURFACE									
UL or lot no.	Section	Township	Range	Lot No.	Feet from the	North/South line	Feet from the	East/West line	County
Dedicated Acres 40		Joint or Infill		Consolidation Code		Order No.			
NO ALLOWABLE WELL BE ASSIGNED TO THIS COMPLETION UNTIL ALL INTERESTS HAVE BEEN CONSOLIDATED OR A NON-STANDARD UNIT HAS BEEN APPROVED BY THE DIVISION									

OPERATOR CERTIFICATION

I hereby certify that the information contained herein is true and complete to the best of my knowledge and belief.

Signature

Randy Jackson

Printed Name

RANDY JACKSON

Title

DISTRICT ENGINEER

Date

October 4, 1994

SURVEYOR CERTIFICATION

I hereby certify that the well location shown on this plat was plotted from field notes of actual surveys made by me or under my supervision, and that the same is true and correct to the best of my belief.

Date of Survey

AUGUST 28, 1994

Signature and Seal of Professional Surveyor

V. LYNN
BEZNER
NO. 7920

Certified Professional Land Surveyor
V. L. BEZNER

N.S. #7920

- per telecon
w/ R. Jackson on
12/15/94, Unit Ltr 'a'
is dedicated to the well,
not 'N' as was originally shown

2510'

50'

