

SHAHARA OIL CORPORATION

OIL CONSERVATION DIVISION
RECEIVED

April 27, 1995

'95 APR 8 AM 8 52

Mr. Mike Stogner
Oil Conservation Division
PO Box 2088
Santa Fe, NM 87504-2088

Re: Unorthodox Locations
Maljamar Grayburg Unit Waterflood Project
Maljamar Grayburg San Andres Field
Lea County, New Mexico

Dear Mr. Stogner:

The Wiser Oil Company requests approval for two inside unorthodox locations and two outside unorthodox locations on the subject waterflood unit. These locations designated Maljamar Grayburg Unit Well No. 85, Maljamar Grayburg Unit Well No. 89, Maljamar Grayburg Unit Well No. 106 and Maljamar Grayburg Unit Well No. 107 are shown on the attached map. The locations of these wells are as follows:

Maljamar Grayburg Unit No. 85
2614' FNL & 1298' FEL, Unit H
Section 4, T17S, R32E

Maljamar Grayburg Unit No. 89
1275' FSL & 2525' FEL, Unit O
Section 4, T17S, R32E

Maljamar Grayburg Unit No. 106
1534' FNL & 1372' FWL, Unit F
Section 10, T17S, R32E
all in Lea County, New Mexico.

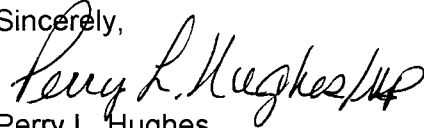
Maljamar Grayburg Unit No. 107
1413' FNL & 2238' FEL, Unit G
Section 10, T17S, R32E

These wells will more efficiently and effectively establish the pattern of the waterflood as set out by Order No. R-2777. Quality Production Corp. is the only offset operator.

Attached are copies of the BLM Application to Drill, C-102, map showing proposed access roads, map showing existing wells, proposed wells and plat of the waterflood area showing the original 80-acre 5-spot waterflood patterns. It is anticipated that the injection pattern will become a 40-acre 5-spot pattern.

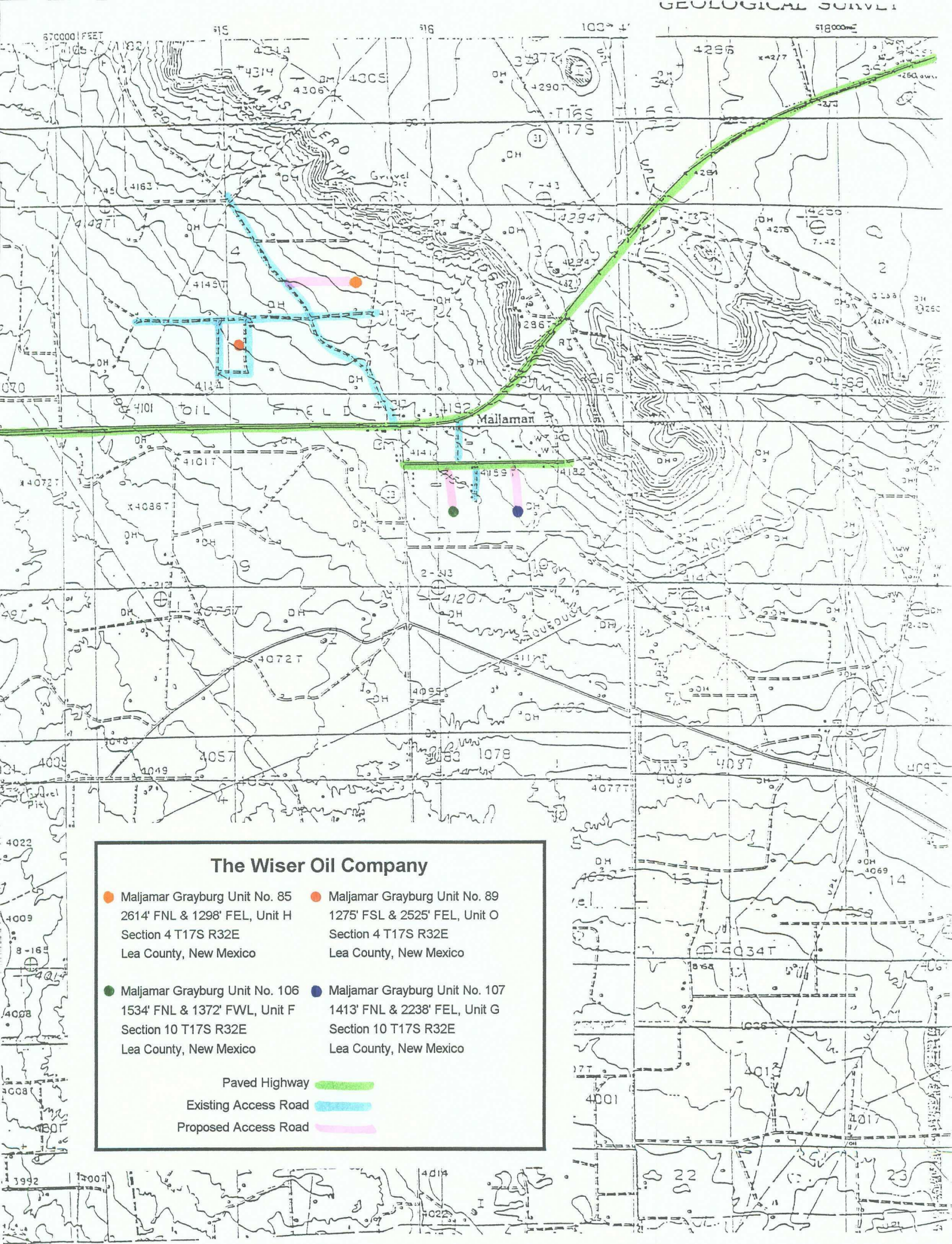
Your earliest consideration of this request will be appreciated. Should you have any questions or require additional data, please contact the undersigned in Carlsbad at 885-5433.

Sincerely,


Perry L. Hughes
Agent for The Wiser Oil Company

PLH/mp
Enclosures

cc: OCD Hobbs





CURRENT WELL STATUS: DECEMBER 1991

QUALITY PRODUCTION, INC.

MALJAMAR GRAYBURG UNIT
MALJAMAR (GRAYBURG SAN ANDRES) FIELD
LEA CO., NEW MEXICO

● Producer
○ Shut-In
▲ Active
▲ Former Injector
○ Proposed Producer
○ Location
▲ Proposed Conversion
▲ Former Injector

0 1000' 2000' 3000' 4000'



FIGURE NO. 19

UNITED STATES
DEPARTMENT OF THE INTERIOR
BUREAU OF LAND MANAGEMENT

APPLICATION FOR PERMIT TO DRILL OR DEEPEN

1a. TYPE OF WORK

DRILL ☒

DEEPEN ☐

b. TYPE OF WELL

OIL
WELL ☒

GAS
WELL ☐

OTHER

SINGLE
ZONE ☒

MULTIPLE
ZONE ☐

2. NAME OF OPERATOR

The Wiser Oil Company

3. ADDRESS AND TELEPHONE NO.

207 W. McKay, Carlsbad, NM 88220 505/885-5433

4. LOCATION OF WELL (Report location clearly and in accordance with any State requirements.)*

At surface

2614' FNL & 1298' FEL, Unit H

At proposed prod. zone

14. DISTANCE IN MILES AND DIRECTION FROM NEAREST TOWN OR POST OFFICE*

Approx 1/2 mile north of Maljamar

15. DISTANCE FROM PROPOSED*

LOCATION TO NEAREST
PROPERTY OR LEASE LINE, FT.
(Also to nearest drlg. unit line, if any)

1298'

16. NO. OF ACRES IN LEASE

3280

17. NO. OF ACRES ASSIGNED
TO THIS WELL

40

18. DISTANCE FROM PROPOSED LOCATION*

TO NEAREST WELL, DRILLING, COMPLETED,
OR APPLIED FOR, ON THIS LEASE, FT.

900'

19. PROPOSED DEPTH

4550'

20. ROTARY OR CABLE TOOLS

Rotary

21. ELEVATIONS (Show whether DF, RT, GR, etc.)

4116 GR

22. APPROX. DATE WORK WILL START*

5/15/95

23.

PROPOSED CASING AND CEMENTING PROGRAM

SIZE OF HOLE	GRADE SIZE OF CASING	WEIGHT PER FOOT	SETTING DEPTH	QUANTITY OF CEMENT
12-1/4	8-5/8 J-55	24#	1200'	Circulate
7-7/8	5-1/2 J-55	17#	4550'	Sufficient to bring top of cnt to base of 8-5/8" csg

Mud Program:

0 - 1200' Drill with fresh water
400 - TD Drill with brine water

BOP Program:

Will install on the 8-5/8" surface casing a 10" Series 900
Type "E" Shaffer Double Hydraulic BOP and will test before
drilling in the Queen formation.

IN ABOVE SPACE DESCRIBE PROPOSED PROGRAM: If proposal is to deepen, give data on present productive zone and proposed new productive zone. If proposal is to drill or deepen directionally, give pertinent data on subsurface locations and measured and true vertical depths. Give blowout preventer program, if any.

24. SIGNED Melanie J. Harker TITLE Agent DATE 3/26/95
(This space for Federal or State office use)

PERMIT NO. _____ APPROVAL DATE _____

Application approval does not warrant or certify that the applicant holds legal or equitable title to those rights in the subject lease which would entitle the applicant to conduct operations thereon.
CONDITIONS OF APPROVAL, IF ANY:

APPROVED BY _____ TITLE _____ DATE _____

*See Instructions On Reverse Side

Title 18 U.S.C. Section 1001, makes it a crime for any person knowingly and willfully to make to any department or agency of the United States any false, fictitious or fraudulent statements or representations as to any matter within its jurisdiction.

OIL CONSERVATION DIVISION

DISTRICT I
P.O. Box 1980, Hobbs, NM 88240

P.O. Box 2083

Santa Fe, New Mexico 87504-2088

DISTRICT II
P.O. Drawer DD, Artesia, NM 88210

DISTRICT III
1000 Rio Brazos Rd., Aztec, NM 87410

WELL LOCATION AND ACREAGE DEDICATION PLAT

All Distances must be from the outer boundaries of the section

Operator The Wiser Oil Company			Lease Maljamar Grayburg Unit		Well No. 85
Unit Letter H	Section 4	Township 17 South	Range 32 East	County NMPM Lea	
Actual Footage Location of Well: 2614 feet from the North line and 1298 feet from the East line					
Ground level Elev. 4116	Producing Formation Grayburg San Andres		Pool Maljamar Grayburg San Andres		Dedicated Acreage: 40 Acres

1. Outline the acreage dedicated to the subject well by colored pencil or hatchure marks on the plat below.

2. If more than one lease is dedicated to the well, outline each and identify the ownership thereof (both as to working interest and royalty).

3. If more than one lease of different ownership is dedicated to the well, have the interest of all owners been consolidated by communitization, unitization, force-pooling, etc.?

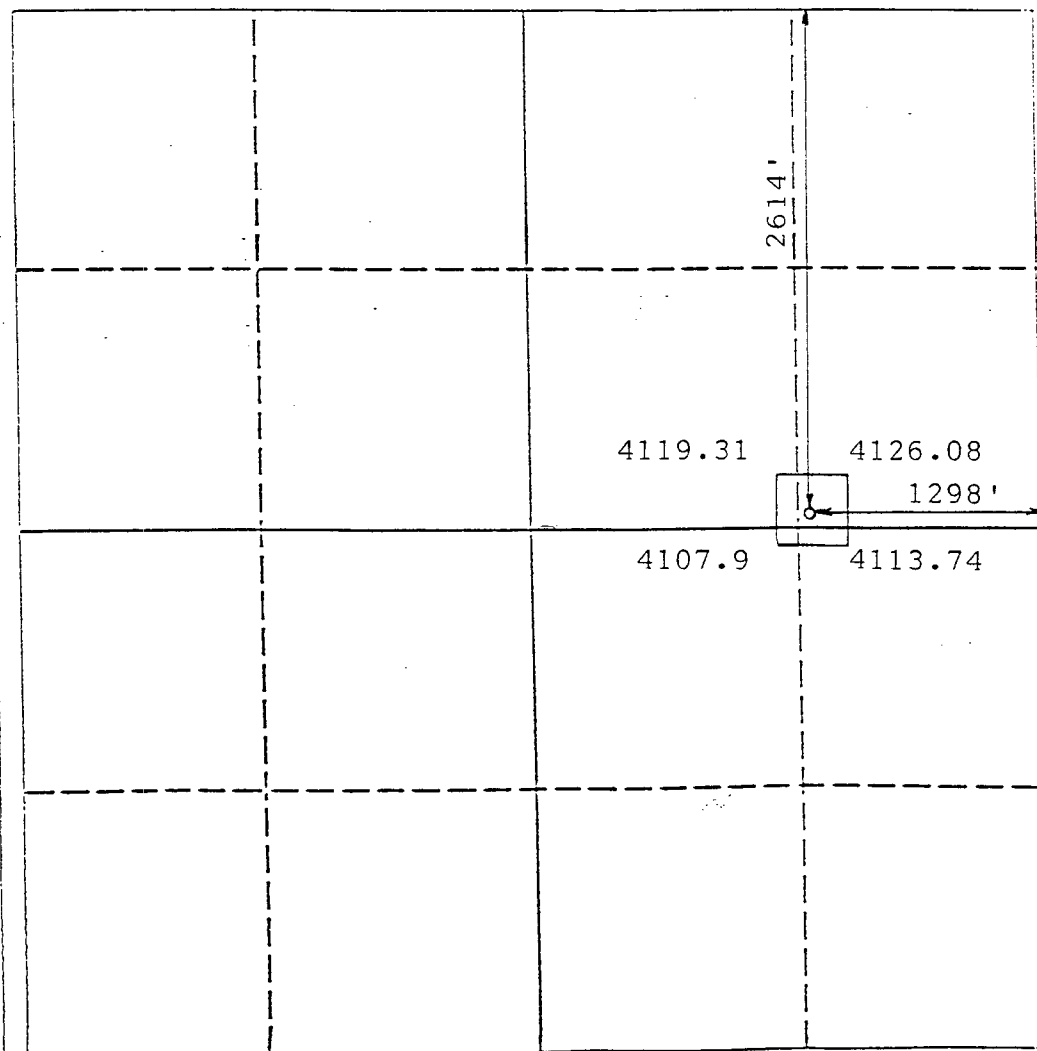
☐ Yes

☐ No

If answer is "yes" type of consolidation _____

If answer is "no" list the owners and tract descriptions which have actually been consolidated. (Use reverse side of this form if necessary.) _____

No allowable will be assigned to the well until all interests have been consolidated (by communitization, unitization, force-pooling, or otherwise) or until a non-standard unit, eliminating such interest, has been approved by the Division.



OPERATOR CERTIFICATION

I hereby certify that the information contained herein is true and complete to the best of my knowledge and belief.

Signature
MELANIE J. PARKER

Printed Name
Agent

Position
The Wiser Oil Company

Company
04/26/95

Date

SURVEYOR CERTIFICATION

I hereby certify that the well location shown on this plat was plotted from field notes of actual surveys made by me or under my supervision, and that the same is true and correct to the best of my knowledge and belief.

Date Surveyed
January 28, 1995

Signature & Seal of **R. Patton**
Professional Surveyor

Certificate No.
8112

RECEIVED FEB 03 1995

UNITED STATES
DEPARTMENT OF THE INTERIOR
BUREAU OF LAND MANAGEMENT

SUBMIT IN TRIPLICATE*
(Other instructions on
reverse side)

FORM APPROVED
OMB NO. 1004-0136
Expires: February 28, 1995

APPLICATION FOR PERMIT TO DRILL OR DEEPEN

1a. TYPE OF WORK

DRILL ☒

DEEPEN ☐

b. TYPE OF WELL

OIL
WELL ☒

GAS
WELL ☐

OTHER

SINGLE
ZONE ☒

MULTIPLE
ZONE ☐

2. NAME OF OPERATOR

The Wiser Oil Company

3. ADDRESS AND TELEPHONE NO.

207 W. McKay, Carlsbad, NM 88220 505/885-5433

4. LOCATION OF WELL (Report location clearly and in accordance with any State requirements.*)

At surface

1275' FSL & 2525' FEL, Unit O

At proposed prod. zone

14. DISTANCE IN MILES AND DIRECTION FROM NEAREST TOWN OR POST OFFICE*

Approx 1/2 mile West-northwest of Maljamar

15. DISTANCE FROM PROPOSED*

LOCATION TO NEAREST
PROPERTY OR LEASE LINE, FT.
(Also to nearest drlg. unit line, if any)

3755'

16. NO. OF ACRES IN LEASE

3280

17. NO. OF ACRES ASSIGNED
TO THIS WELL

40

18. DISTANCE FROM PROPOSED LOCATION*
TO NEAREST WELL, DRILLING, COMPLETED,
OR APPLIED FOR, ON THIS LEASE, FT.

615'

19. PROPOSED DEPTH
4550'

20. ROTARY OR CABLE TOOLS
Rotary

21. ELEVATIONS (Show whether DF, RT, GR, etc.)

4078 GR

22. APPROX. DATE WORK WILL START*

6/1/95

23.

PROPOSED CASING AND CEMENTING PROGRAM

SIZE OF HOLE	GRADE, SIZE OF CASING	WEIGHT PER FOOT	SETTING DEPTH	QUANTITY OF CEMENT
12-1/4	8-5/8 J-55	24#	1200'	Circulate
7-7/8	5-1/2 J-55	17#	4550'	Sufficient to bring top of cmt to base of 8-5/8" csg

Mud Program:

0 - 1200' Drill with fresh water
400 - TD Drill with brine water

BOP Program:

Will install on the 8-5/8" surface casing a 10" Series 900
Type "E" Shaffer Double Hydraulic BOP and will test before
drilling in the Queen formation.

IN ABOVE SPACE DESCRIBE PROPOSED PROGRAM: If proposal is to deepen, give data on present productive zone and proposed new productive zone. If proposal is to drill or deepen directionally, give pertinent data on subsurface locations and measured and true vertical depths. Give blowout preventer program, if any.

24.

SIGNED

Melanie Starker

TITLE Agent

DATE 3/26/95

(This space for Federal or State office use)

PERMIT NO.

APPROVAL DATE

Application approval does not warrant or certify that the applicant holds legal or equitable title to those rights in the subject lease which would entitle the applicant to conduct operations thereon.
CONDITIONS OF APPROVAL, IF ANY:

APPROVED BY

TITLE

DATE

*See Instructions On Reverse Side

Title 18 U.S.C. Section 1001, makes it a crime for any person knowingly and willfully to make to any department or agency of the United States any false, fictitious or fraudulent statements or representations as to any matter within its jurisdiction.

OIL CONSERVATION DIVISION

P.O. Box 2088
Santa Fe, New Mexico 87504-2088

DISTRICT I

P.O. Box 1980, Hobbs, NM 88240

DISTRICT II

P.O. Drawer DD, Artesia, NM 88210

DISTRICT III

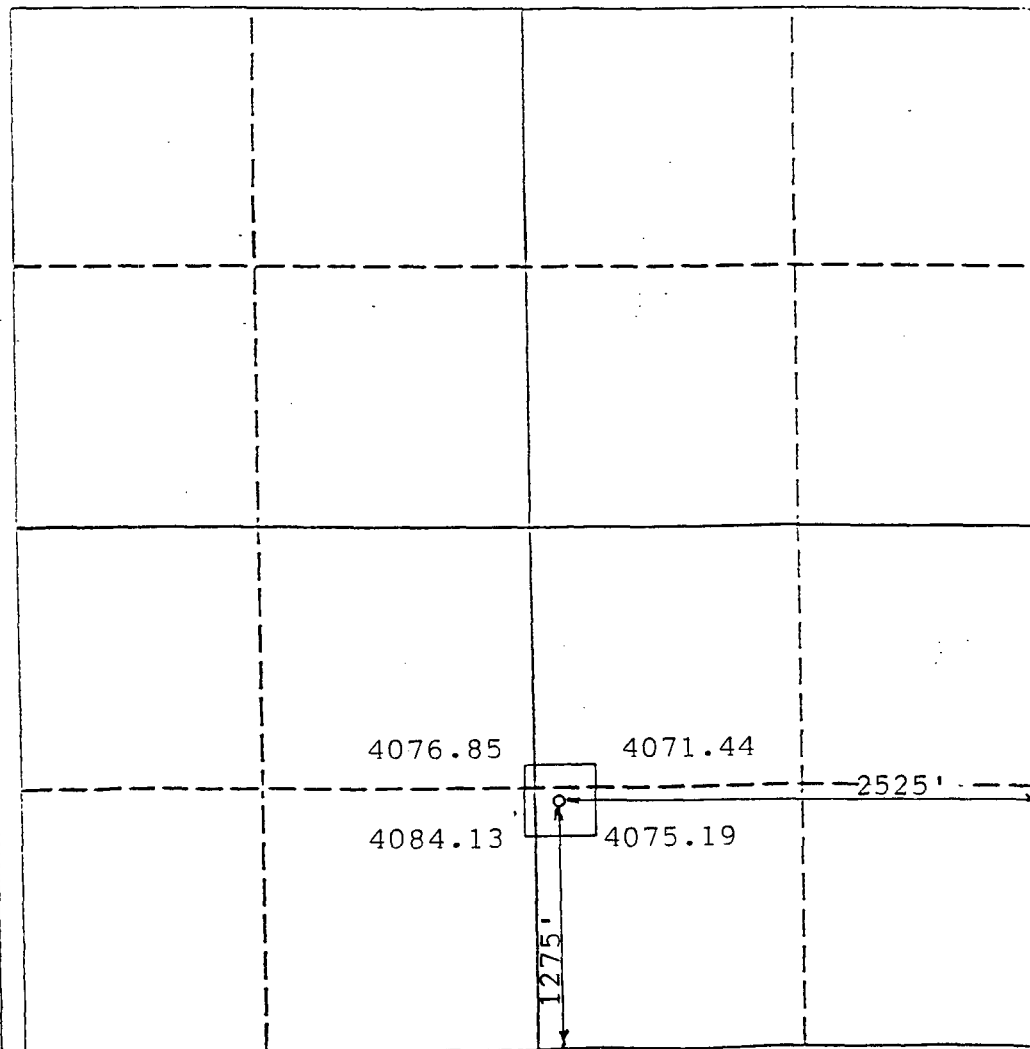
1000 Rio Brazos Rd., Aztec, NM 87410

WELL LOCATION AND ACREAGE DEDICATION PLAT

All Distances must be from the outer boundaries of the section

Operator The Wiser Oil Company			Lease Maljamar Grayburg Unit		Well No. 89
Unit Letter 0	Section 4	Township 17 South	Range 32 East	County NMNM	Lea
Actual Footage Location of Well: 1275 feet from the South line and 2525 feet from the East line					
Ground level Elev. 4078	Producing Formation Grayburg San Andres		Pool Maljamar Grayburg San Andres	Dedicated Acreage: 40 Acres	

- Outline the acreage dedicated to the subject well by colored pencil or hatchure marks on the plat below.
- If more than one lease is dedicated to the well, outline each and identify the ownership thereof (both as to working interest and royalty).
- If more than one lease of different ownership is dedicated to the well, have the interest of all owners been consolidated by communitization, unitization, force-pooling, etc.?
☐ Yes ☐ No If answer is "yes" type of consolidation _____
If answer is "no" list the owners and tract descriptions which have actually been consolidated. (Use reverse side of this form if necessary). _____
No allowable will be assigned to the well until all interests have been consolidated (by communitization, unitization, force-pooling, or otherwise) or until a non-standard unit, eliminating such interest, has been approved by the Division.



OPERATOR CERTIFICATION

I hereby certify that the information contained herein is true and complete to the best of my knowledge and belief.

Signature

Melanie J. Parker

Printed Name

Agent

Position

The Wiser Oil Company

Company

04/26/95

Date

SURVEYOR CERTIFICATION

I hereby certify that the well location shown on this plat was plotted from field notes of actual surveys made by me or under my supervision, and that the same is true and correct to the best of my knowledge and belief.

Date Surveyed

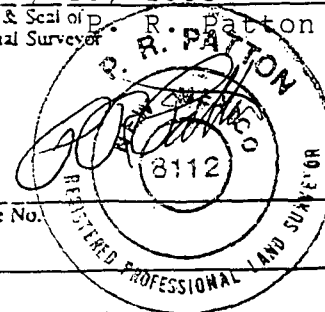
January 28, 1995

Signature & Seal of Professional Surveyor

R. R. Patton

Certificate No.

8112



RECEIVED FEB 03 1995

UNITED STATES
DEPARTMENT OF THE INTERIOR
BUREAU OF LAND MANAGEMENT

APPLICATION FOR PERMIT TO DRILL OR DEEPEN

1a. TYPE OF WORK

DRILL ☒

DEEPEN ☐

b. TYPE OF WELL

OIL
WELL ☒

GAS
WELL ☐

OTHER

SINGLE
ZONE ☒

MULTIPLE
ZONE ☐

2. NAME OF OPERATOR

The Wiser Oil Company

3. ADDRESS AND TELEPHONE NO.

207 W. McKay, Carlsbad, NM 88220 505/885-5433

4. LOCATION OF WELL (Report location clearly and in accordance with any State requirements.)*
At surface

1534' FNL & 1372' FWL, Unit F

At proposed prod. zone

14. DISTANCE IN MILES AND DIRECTION FROM NEAREST TOWN OR POST OFFICE*

Approx 1/4 mile South-southeast of Maljamar

15. DISTANCE FROM PROPOSED*

LOCATION TO NEAREST
PROPERTY OR LEASE LINE, FT.
(Also to nearest drlg. unit line, if any)

3900'

16. NO. OF ACRES IN LEASE

3280

17. NO. OF ACRES ASSIGNED
TO THIS WELL

40

18. DISTANCE FROM PROPOSED LOCATION*

TO NEAREST WELL, DRILLING, COMPLETED,
OR APPLIED FOR, ON THIS LEASE, FT.

945'

19. PROPOSED DEPTH

4400'

20. ROTARY OR CABLE TOOLS

Rotary

21. ELEVATIONS (Show whether DF, RT, GR, etc.)

4081 GR

22. APPROX. DATE WORK WILL START*

6/1/95

23.

PROPOSED CASING AND CEMENTING PROGRAM

SIZE OF HOLE	GRADE, SIZE OF CASING	WEIGHT PER FOOT	SETTING DEPTH	QUANTITY OF CEMENT
12-1/4	8-5/8 J-55	24#	1200'	Circulate
7-7/8	5-1/2 J-55	17#	4400'	Sufficient to bring top of cmt to base of 8-5/8" csg

Mud Program:

0 - 1200' Drill with fresh water
400 - TD Drill with brine water

BOP Program:

Will install on the 8-5/8" surface casing a 10" Series 900
Type "E" Shaffer Double Hydraulic BOP and will test before
drilling in the Queen formation.

IN ABOVE SPACE DESCRIBE PROPOSED PROGRAM. If proposal is to deepen, give data on present productive zone and proposed new productive zone. If proposal is to drill or deepen directionally, give pertinent data on subsurface locations and measured and true vertical depths. Give blowout preventer program, if any.

24.

SIGNED

Melanie J. Parker

TITLE

Agent

DATE

3/26/95

(This space for Federal or State office use)

PERMIT NO.

APPROVAL DATE

Application approval does not warrant or certify that the applicant holds legal or equitable title to those rights in the subject lease which would entitle the applicant to conduct operations thereon.

CONDITIONS OF APPROVAL, IF ANY:

APPROVED BY

TITLE

DATE

*See Instructions On Reverse Side

Submit to Appropriate
District Office
State Lease - 4 copies
Fee Lease - 3 copies

State of New Mexico
Energy, Minerals and Natural Resources Department

Form C-102
Revised 1-1-89

OIL CONSERVATION DIVISION

DISTRICT I
P.O. Box 1980, Hobbs, NM 88240

P.O. Box 2088
Santa Fe, New Mexico 87504-2088

DISTRICT II
P.O. Drawer DD, Artesia, NM 88210

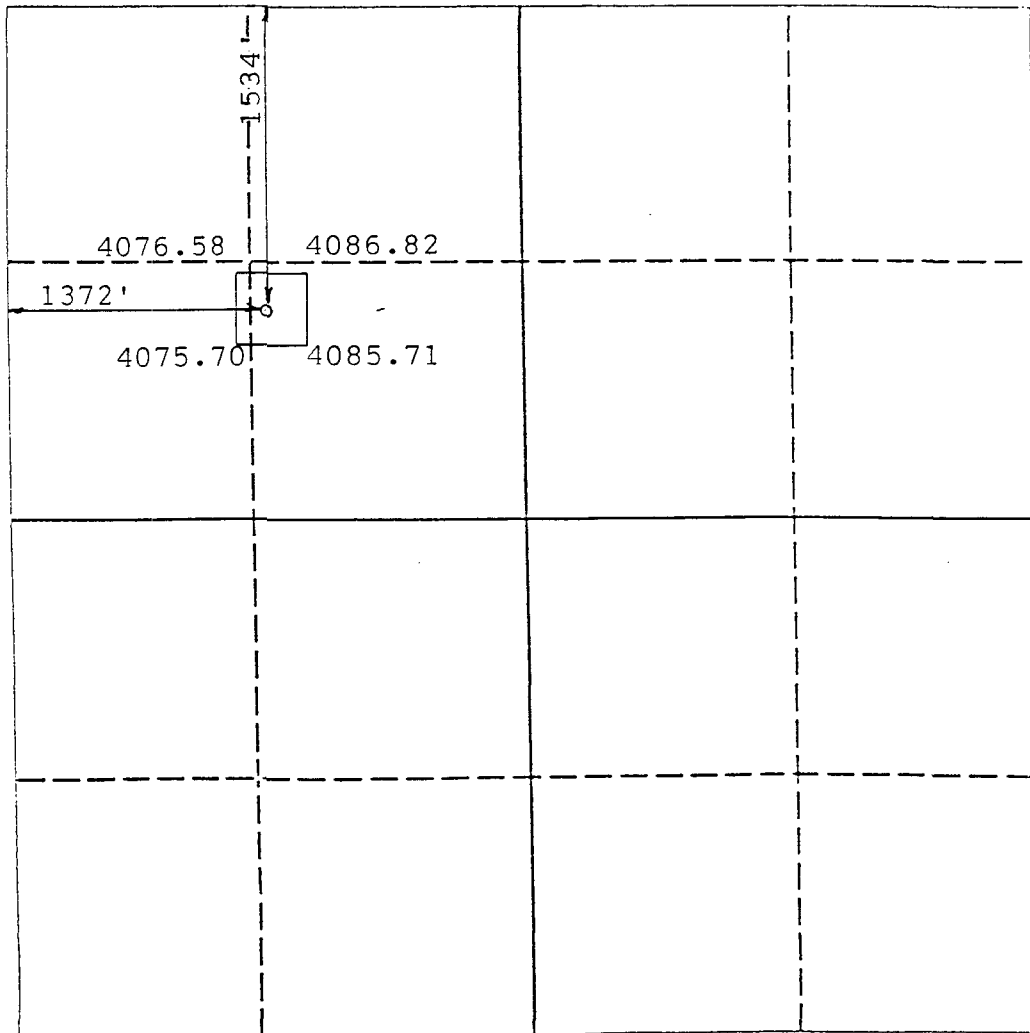
DISTRICT III
1000 Rio Brazos Rd., Aztec, NM 87410

WELL LOCATION AND ACREAGE DEDICATION PLAT

All Distances must be from the outer boundaries of the section

Operator The Wiser Oil Company			Lease Maljamar Grayburg Unit		Well No. 106
Unit Letter F	Section 10	Township 17 South	Range 32 East	County Lea	
Actual Footage Location of Well: 1534 feet from the North line and 1372 feet from the West line					
Ground level Elev. 4081	Producing Formation Grayburg San Andres		Pool Maljamar Grayburg San Andres		Dedicated Acreage: 40 Acres

1. Outline the acreage dedicated to the subject well by colored pencil or hatchure marks on the plat below.
2. If more than one lease is dedicated to the well, outline each and identify the ownership thereof (both as to working interest and royalty).
3. If more than one lease of different ownership is dedicated to the well, have the interest of all owners been consolidated by communization, unitization, force-pooling, etc.?
☐ Yes ☐ No If answer is "yes" type of consolidation _____
If answer is "no" list the owners and tract descriptions which have actually been consolidated. (Use reverse side of this form if necessary.) _____
No allowable will be assigned to the well until all interests have been consolidated (by communization, unitization, forced-pooling, or otherwise) or until a non-standard unit, eliminating such interest, has been approved by the Division.



OPERATOR CERTIFICATION

I hereby certify that the information contained herein is true and complete to the best of my knowledge and belief.

Signature

Melanie J. Parker

Printed Name

Agent

Position

The Wiser Oil Company

Company

04/26/95

Date

SURVEYOR CERTIFICATION

I hereby certify that the well location shown on this plat was plotted from field notes of actual surveys made by me or under my supervision, and that the same is true and correct to the best of my knowledge and belief.

Date Surveyed

January 28, 1995

Signature & Seal of Professional Surveyor

Certificate No.

8112

RECEIVED FEB 03 1995

UNITED STATES
DEPARTMENT OF THE INTERIOR
BUREAU OF LAND MANAGEMENT

APPLICATION FOR PERMIT TO DRILL OR DEEPEN

1a. TYPE OF WORK

DRILL ☒

DEEPEN ☐

b. TYPE OF WELL

OIL
WELL ☒

GAS
WELL ☐

OTHER

SINGLE
ZONE ☒

MULTIPLE
ZONE ☐

2. NAME OF OPERATOR

The Wiser Oil Company

3. ADDRESS AND TELEPHONE NO.

207 W. McKay, Carlsbad, NM 88220 505/885-5433

4. LOCATION OF WELL (Report location clearly and in accordance with any State requirements.)*
At surface

1413' FNL & 2238' FEL, Unit G

At proposed prod. zone

14. DISTANCE IN MILES AND DIRECTION FROM NEAREST TOWN OR POST OFFICE*

Approx 1/2 mile southeast from Maljamar

15. DISTANCE FROM PROPOSED*
LOCATION TO NEAREST
PROPERTY OR LEASE LINE, FT.
(Also to nearest drlg. unit line, if any)

2238'

16. NO. OF ACRES IN LEASE
3280

17. NO. OF ACRES ASSIGNED
TO THIS WELL 40

18. DISTANCE FROM PROPOSED LOCATION*
TO NEAREST WELL, DRILLING, COMPLETED,
OR APPLIED FOR, ON THIS LEASE, FT.

769'

19. PROPOSED DEPTH
4400'

20. ROTARY OR CABLE TOOLS
Rotary

21. ELEVATIONS (Show whether DF, RT, GR, etc.)

4098 GR

22. APPROX. DATE WORK WILL START*

6/1/95

23.

PROPOSED CASING AND CEMENTING PROGRAM

SIZE OF HOLE	GRADE SIZE OF CASING	WEIGHT PER FOOT	SETTING DEPTH	QUANTITY OF CEMENT
12-1/4	8-5/8 J-55	24#	1200'	Circulate
7-7/8	5-1/2 J-55	17#	4400'	Sufficient to bring top of cmt to base of 8-5/8" csg

Mud Program:

0 - 1200' Drill with fresh water
400 - TD Drill with brine water

BOP Program:

Will install on the 8-5/8" surface casing a 10" Series 900
Type "E" Shaffer Double Hydraulic BOP and will test before
drilling in the Queen formation.

IN ABOVE SPACE DESCRIBE PROPOSED PROGRAM: If proposal is to deepen, give data on present productive zone and proposed new productive zone. If proposal is to drill or deepen directionally, give pertinent data on subsurface locations and measured and true vertical depths. Give blowout preventer program, if any.

24.

SIGNED

Melanie J. Harker

TITLE Agent

DATE 3/26/95

(This space for Federal or State office use)

PERMIT NO.

APPROVAL DATE

Application approval does not warrant or certify that the applicant holds legal or equitable title to those rights in the subject lease which would entitle the applicant to conduct operations thereon.
CONDITIONS OF APPROVAL, IF ANY:

APPROVED BY

TITLE

DATE

*See Instructions On Reverse Side

Submit to Appropriate
District Office
State Lease - 4 copies
Fee Lease - 3 copies

State of New Mexico
Energy, Minerals and Natural Resources Department

Form C-102
Revised 1-1-89

OIL CONSERVATION DIVISION

P.O. Box 2088
Santa Fe, New Mexico 87504-2088

DISTRICT I
P.O. Box 1980, Hobbs, NM 88240

DISTRICT II
P.O. Drawer DD, Artesia, NM 88210

DISTRICT III
1000 Rio Brazos Rd., Aztec, NM 87410

WELL LOCATION AND ACREAGE DEDICATION PLAT

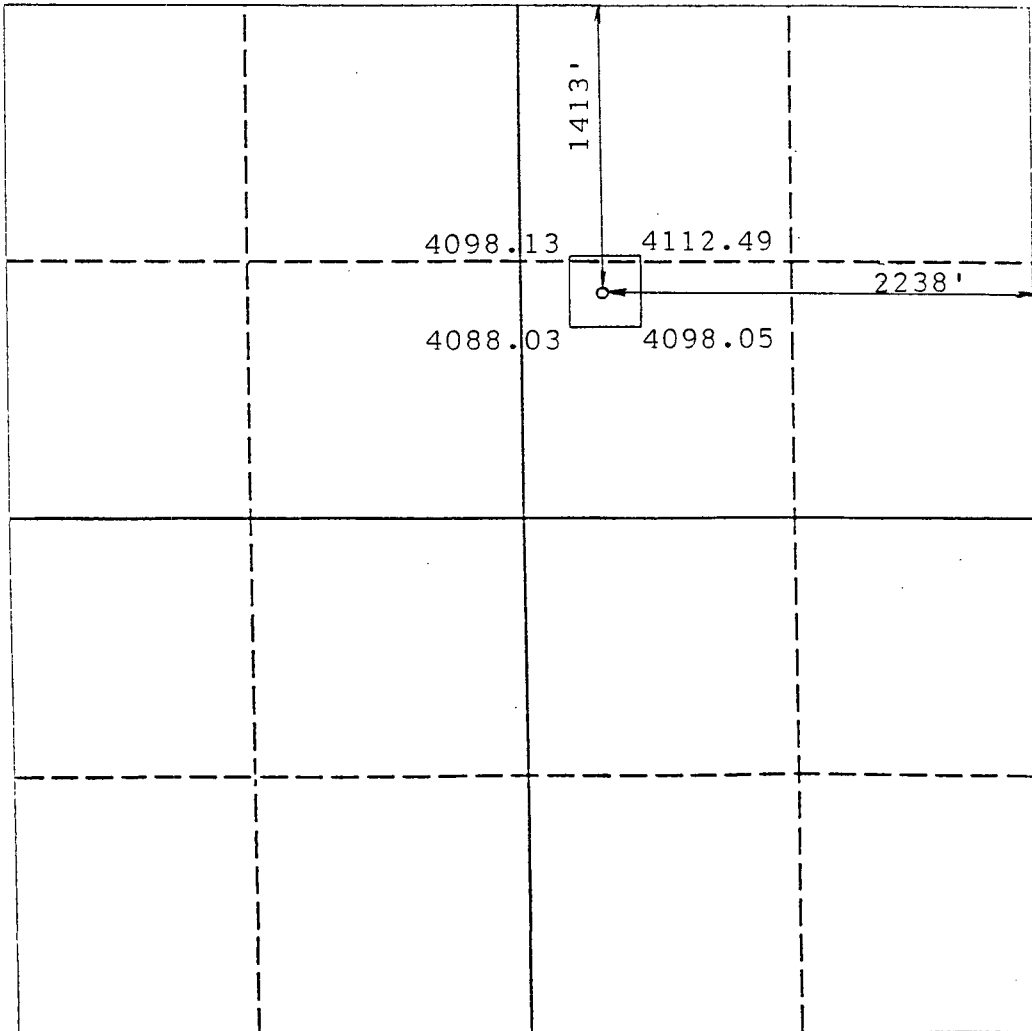
All Distances must be from the outer boundaries of the section

Operator The Wiser Oil Company			Lease Maljamar Grayburg Unit		Well No. 107
Unit Letter G	Section 10	Township 17 South	Range 32 East	County Lea	
Actual Footage Location of Well: 1413 feet from the North line and 2238 feet from the East line					
Ground level Elev. 4098.31	Producing Formation Grayburg San Andres		Pool Maljamar Grayburg San Andres	Dedicated Acreage: 40 Acres	

1. Outline the acreage dedicated to the subject well by colored pencil or hatchure marks on the plat below.
2. If more than one lease is dedicated to the well, outline each and identify the ownership thereof (both as to working interest and royalty).
3. If more than one lease of different ownership is dedicated to the well, have the interest of all owners been consolidated by communitization, unitization, force-pooling, etc.?
☐ Yes ☐ No If answer is "yes" type of consolidation _____

If answer is "no" list the owners and tract descriptions which have actually been consolidated. (Use reverse side of this form if necessary.) _____

No allowable will be assigned to the well until all interests have been consolidated (by communitization, unitization, forced-pooling, or otherwise) or until a non-standard unit, eliminating such interest, has been approved by the Division.



OPERATOR CERTIFICATION

I hereby certify that the information contained herein is true and complete to the best of my knowledge and belief.

Signature
Melanie J. Parker

Printed Name
Melanie J. Parker

Position
Agent

Company
The Wiser Oil Company

Date
04/25/95

SURVEYOR CERTIFICATION

I hereby certify that the well location shown on this plat was plotted from field notes of actual surveys made by me or under my supervision, and that the same is true and correct to the best of my knowledge and belief.

Date Surveyed
January 26, 1995

Signature & Seal of Professional Surveyor
R. J. Barton
R. J. Barton
NEW MEXICO
REGISTERED PROFESSIONAL LAND SURVEYOR

Certificate No.
8112

RECEIVED FEB 03 1995

SHAHARA OIL CORPORATION

OIL CONSERVATION DIVISION
RECEIVED

May 5, 1995

'95 MAY 17 AM 8 52

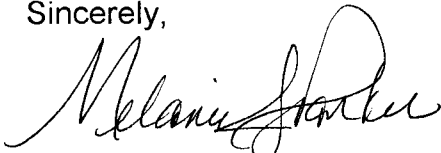
Mr. Mike Stogner
Oil Conservation Division
PO Box 2088
Santa Fe, NM 87504-2088

Re: The Wiser Oil Company
Request for Unorthodox Location
Maljamar Grayburg Unit Well No. 85

Dear Mr. Stogner:

Enclosed is the acknowledgement of Quality Production Corp., the offset operator of the requested unorthodox location.

Sincerely,



Melanie J. Parker
Agent for
The Wiser Oil Company

/mp

Enclosure

SHAHARA OIL CORPORATION

April 27, 1995

CERTIFIED NO. Z 141 770 903

Quality Production Corp.
P.O. Box 250
Hobbs, New Mexico 88241

Re: The Wiser Oil Company
Request for Unorthodox Location
Maljamar Grayburg Unit

Gentlemen:

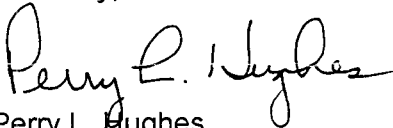
Enclosed is a copy of a request for approval of an unorthodox location of a 20-acre infill well on the Caprock Maljamar Unit. The location of this well is as follows:

Maljamar Grayburg Unit Well No. 85
2614' FNL & 1298' FEL, Unit H
Section 4, T17S, R32E
Lea County, New Mexico

The Wiser Oil Company is submitting this request as part of the expansion of its Maljamar Grayburg Unit Waterflood Project. This copy is sent to you in compliance with OCD requirement to notify the offset operator. If you have no objection to this location, please sign the enclosed copy of this letter and return in the envelope provided.

Should you have any questions regarding this request, please contact me at 505-885-5433.

Sincerely,



Perry L. Hughes
Authorized Agent for
The Wiser Oil Company

PLH/mp

Enclosures

QUALITY PRODUCTION CORP, INC.

By: R M Williams - VP
2 May 95

RECEIVED MAY - 5 1995