

January 3, 1996

Sent Federal Express

Mr. William LeMay
New Mexico Oil Conservation Division
2040 South Pacheco
Santa Fe, New Mexico 87505

Re: Payne #2E
1845'FSL, 1895'FWL Section 21, T-32-N, R-10-W - San Juan County, New Mexico
API # 30-045-(not yet assigned)

Dear Mr. LeMay:

Meridian Oil Inc. is applying for administrative approval of a non-standard location for the above location in the Basin Dakota formation. This application for the referenced location is due to terrain as shown on the topographic map, the presence of extensive archaeology and the presence of pipelines, and at the request of the Bureau of Land Management.

The following attachments are for your review:

1. Application for Permit to Drill.
2. Completed C-102 at referenced location.
3. Offset operators/owners plat.
4. 7.5 minute topographic map showing the orthodox windows, and enlargement of the map to define topographic features.

A copy of this application is being submitted to all offset owners/ operators by certified mail with a request that they furnish you with a Waiver of Objection, and return one copy to this office.

Sincerely,


Peggy Bradfield
Regulatory/Compliance Representative
encs.

WAIVER


_____ hereby waives objection to Meridian Oil's application for a non-standard location for their Payne #2E as proposed above.

By: _____ Date: _____

xc: see attached list

UNITED STATES
DEPARTMENT OF THE INTERIOR
BUREAU OF LAND MANAGEMENT

APPLICATION FOR PERMIT TO DRILL, DEEPEN, OR PLUG BACK

1a. Type of Work DRILL	5. Lease Number SF-080517 Unit Reporting Number	
1b. Type of Well GAS	6. If Indian, All. or Tribe	
2. Operator MERIDIAN OIL	7. Unit Agreement Name	
3. Address & Phone No. of Operator PO Box 4289, Farmington, NM 87499 (505) 326-9700	8. Farm or Lease Name Payne 9. Well Number 2E	
4. Location of Well 1845' FSL, 1895' FWL Latitude 36° 58.1, Longitude 107° 53.3	10. Field, Pool, Wildcat Basin Dakota 11. Sec., Twn, Rge, Mer. (NMPM) Sec 21, T-32-N, R-10-W API # 30-045-	
14. Distance in Miles from Nearest Town 3 miles to Cedar Hill	12. County San Juan	13. State NM
15. Distance from Proposed Location to Nearest Property or Lease Line 1845'		
16. Acres in Lease	17. Acres Assigned to Well 315.56	
18. Distance from Proposed Location to Nearest Well, Drlg, Compl, or Applied for on this Lease 500'		
19. Proposed Depth 7880	20. Rotary or Cable Tools Rotary	
21. Elevations (DF, FT, GR, Etc.) 6265' GR	22. Approx. Date Work will Start 1st quarter 1996	
23. Proposed Casing and Cementing Program See Operations Plan attached		
24. Authorized by:	 Regional Drilling Engineer	
	12/1/95 Date	

PERMIT NO. _____ APPROVAL DATE _____

APPROVED BY _____ TITLE _____ DATE _____

Archaeological Report submitted by Union Texas Petroleum.
Threatened and Endangered Species Report to be submitted
NOTE: This format is issued in lieu of U.S. BLM Form 3160-3

District I
PO Box 1980, Hobbs, NM 88241-1980
District II
PO Drawer DD, Artesia, NM 88211-0719
District III
1000 Rio Bravo Rd., Aztec, NM 87410
District IV
PO Box 2088, Santa Fe, NM 87504-2088

State of New Mexico
Energy, Minerals & Natural Resources Department

OIL CONSERVATION DIVISION
PO Box 2088
Santa Fe, NM 87504-2088

Form C-102
Revised February 21, 1994
Instructions on back
Submit to Appropriate District Office
State Lease - 4 Copies
Fee Lease - 3 Copies

☐ AMENDED REPORT

WELL LOCATION AND ACREAGE DEDICATION PLAT

1 API Number 30-045-		2 Pool Code 71599		3 Pool Name Basin Dakota		
4 Property Code 7379		5 Property Name Payne			6 Well Number 2E	
7 OGRID No. 14538		8 Operator Name MERIDIAN OIL INC.			9 Elevation 6265'	

10 Surface Location

UL or lot no.	Section	Township	Range	Lot Ida	Feet from the	North/South line	Feet from the	East/West line	County
K	21	32N	10W		1845	South	1895	West	S.J.

11 Bottom Hole Location If Different From Surface

UL or lot no.	Section	Township	Range	Lot Ida	Feet from the	North/South line	Feet from the	East/West line	County

12 Dedicated Acres W/315.56	13 Joint or Infill	14 Consolidation Code	15 Order No.
--------------------------------	--------------------	-----------------------	--------------

NO ALLOWABLE WILL BE ASSIGNED TO THIS COMPLETION UNTIL ALL INTERESTS HAVE BEEN CONSOLIDATED
OR A NON-STANDARD UNIT HAS BEEN APPROVED BY THE DIVISION

<div>16</div> <div>21</div> <div>NMSF-080517</div>				<div>17 OPERATOR CERTIFICATION</div> <p>I hereby certify that the information contained herein is true and complete to the best of my knowledge and belief</p> <p><i>Peggy Bradford</i> Signature Peggy Bradford Printed Name Regulatory Administrator Title 11-1-95 Date</p>	
				<div>18 SURVEYOR CERTIFICATION</div> <p>I hereby certify that the well location shown on this plat was plotted from field notes of actual surveys made by me or under my supervision, and that the same is true and correct to the best of my belief.</p> <p>9-19-95 Date of Survey Signature and Seal of Professional Surveyor Certificate Number</p>	

OPERATIONS PLAN

Well Name: Payne #2E
Location: 1845' FSL, 1895' FWL Section 21, T-32-N, R-10-W
 San Juan County, NM
 Latitude 36° 58.1, Longitude 107° 53.3
Formation: Basin Dakota
Elevation: 6265' GL

<u>Formation Tops:</u>	<u>Top</u>	<u>Bottom</u>	<u>Contents</u>
Surface	San Jose	1347'	
Ojo Alamo	1347'	1382'	aquifer
Kirtland	1382'	2626'	
Fruitland	2626'	3079'	gas
Pictured Cliffs	3079'	3311'	gas
Lewis	3311'	3772'	
Intermediate TD	3511'		
Huerfano Bentonite	3772'	3812'	gas
Navajo City	3812'	4234'	gas
Otero	4234'	4932'	gas
Massive Cliff House	4932'	5003'	gas
Menefee	5003'	5352'	gas
Point Lookout	5352'	5702'	gas & hydrocarbons
Mancos	5702'	6557'	gas
Intermediate TD	5902'		
Gallup	6557'	7417'	gas
Greenhorn	7417'	7482'	
Graneros	7482'	7614'	
Dakota	7614'	7822'	gas
Morrison	7822'		hydrocarbons
Total Depth	7880'		

Logging Program:

Openhole Wireline Logging -
 DIL/LDT/CNL/Temp/NGT/GR/CAL/FMS
 Mud logs from 3511' to TD

Mud Program:

<u>Interval</u>	<u>Type</u>	<u>Weight</u>	<u>Vis.</u>	<u>Fluid Loss</u>
0- 200'	Spud	8.4-8.9	40-50	no control
200-3511'	LSND	8.4-9.1	30-60	no control
3511-5902'	Gas	n/a	n/a	n/a
5902-7880'	Gas/LSND	8.7-9.0	40-50	10-15 cc/30 min

Pit levels will be visually monitored to detect gain or loss of fluid control.

Casing Program:

<u>Hole Size</u>	<u>Depth Interval</u>	<u>Csg. Size</u>	<u>Wt.</u>	<u>Grade</u>
17 1/2"	0' - 200'	13 3/8"	48.0#	H-40
12 1/4"	200' - 3511'	9 5/8"	36.0#	K-55
8 3/4"	3361' - 5902'	7"	23.0#	K-55
6 1/4"	5752' - 7880'	4 1/2"	11.6#	N-80

Tubing Program:

0' - 7880' 2 3/8" tubing

BOP Specifications, Wellhead and Tests:

Surface to Intermediate TD -

13 5/8" 2000 psi minimum double gate BOP stack (Reference Figure #1). After nipple-up prior to drilling out surface casing, rams and casing will be tested to 600 psi for 30 minutes.

Intermediate TD to Total Depth -

11" 2000 psi minimum double gate BOP stack (Reference Figure #1). After nipple-up prior to drilling out intermediate casing, rams and casing will be tested to 1500 psi for 30 minutes.

Surface to Total Depth -

2" nominal, 2000 psi minimum choke manifold (Reference Figure #3).

DST's and Coring - No DSTs. No cores.

Completion Operations -

6" 2000 psi double gate BOP stack (Reference Figure #2). After nipple-up prior to completion, pipe rams, casing and liner top will be tested to 2000 psi for 15 minutes.

Wellhead -

13 3/8" x 9 5/8" x 7" x 2 3/8" 2000 psi tree assembly.

General -

- Pipe rams will be actuated once each day and blind rams will be actuated once each trip to test proper functioning.
- An upper kelly cock valve with handle available and drill string valves to fit each drill string will be available on the rig floors at all times.
- BOP pit level drill will be conducted weekly for each drilling crew.
- All BOP tests and drills will be recorded in daily drilling reports.
- Blind and pipe rams will be equipped with extension hand wheels.

Cementing:

13 3/8" surface casing - cement with 353 sx Class "B" cement with 1/4# flocele/sx and 3% calcium chloride (417 cu.ft. of slurry, 200% excess to circulate to surface). WOC 12 hrs. Test casing to 600 psi for 30 minutes.

Saw tooth guide shoe on bottom. Bowspring centralizers will be run in accordance with Onshore Order #2.

9 5/8" casing -

First stage - lead w/264 sx of 65/35 Class "B" poz w/6% gel, 2% calcium chloride, 5# gilsonite/sx and 1/4# flocele/sx. Tail w/100 sx Class "B" w/2% calcium chloride (586 cu.ft. of slurry, 100% excess to circulate to stage tool @ 2576'.)

Second stage - Lead w/845 sx 65/35 Class "B" poz w/6% gel, 2% calcium chloride, 5# gilsonite/sx and 1/4# flocele/sx. Tail w/100 sx Class "B" w/2% calcium chloride (1614 cu.ft. of slurry, 100% excess to circulate to surface.) WOC minimum of 12 hours before drilling out intermediate casing. If cement does not circulate to surface, a temperature log will be run after 8 hours to determine TOC. Test casing to 1500 psi for 30 minutes.

Cement nose guide shoe on bottom with float collar spaced on top of shoe joint. Seven bowspring centralizers spaced every other joint off bottom, with three spaced every fourth joint to the base of the Ojo Alamo at 1382'. Two turbolating centralizers at the base of the Ojo Alamo at 1382'. Bowspring centralizers spaced every fourth joint from the base of the Ojo Alamo to the base of the surface casing.

7" intermediate liner -

Cement to circulate liner top. Lead w/365 sx of 65/35 Class "B" poz w/6% gel, 2% calcium chloride, 5# gilsonite/sx and 1/4# flocele/sx. Tail w/100 sx Class "B" w/2% calcium chloride (764 cu.ft. of slurry, 100% excess to circulate liner top at 3361'.) WOC minimum of 12 hours before drilling out intermediate liner. If cement does not circulate to surface, a cement bond log will be run during completion. Test casing to 1500 psi for 30 minutes.

Double float shoe on bottom. No bowspring centralizers will be run for gas hole.

4 1/2" Production Liner -

Cement to circulate liner top. Lead with 180 sx 65/35 Class "B" poz w/6% gel, 2% calcium chloride, 5# gilsonite/sx and 1/4# flocele/sx. Tail with 100 sx Class "B" w/2% calcium chloride (437 cu.ft., 100% excess to circulate liner top). WOC a minimum of 18 hrs prior to completing.

Double float shoe on bottom. Bowspring centralizers spaced every other joint off bottom to top of liner. The liner hanger will have a rubber packoff.

- If hole conditions permit, an adequate water spacer will be pumped ahead of each cement job to prevent cement/ mud contamination or cement hydration.
- The pipe will be rotated and/or reciprocated, if hole conditions permit.

Special Drilling Operations (Gas/Mist Drilling):

The following equipment will be operational while gas/mist drilling:

- An anchored blooie line will be utilized to discharge all cuttings and circulating medium to the blow pit a minimum of 100' from the wellhead.
- The blooie line will be equipped with an automatic igniter or pilot light.
- Compressors will be located a minimum of 100' from the wellhead in the opposite direction from the blooie line.
- Engines will have spark arresters or water cooled exhaust.
- Deduster equipment will be utilized.
- The rotating head will be properly lubricated and maintained.
- A float valve will be utilized above the bit.
- Mud circulating equipment, water, and mud materials will be sufficient to maintain control of the well.

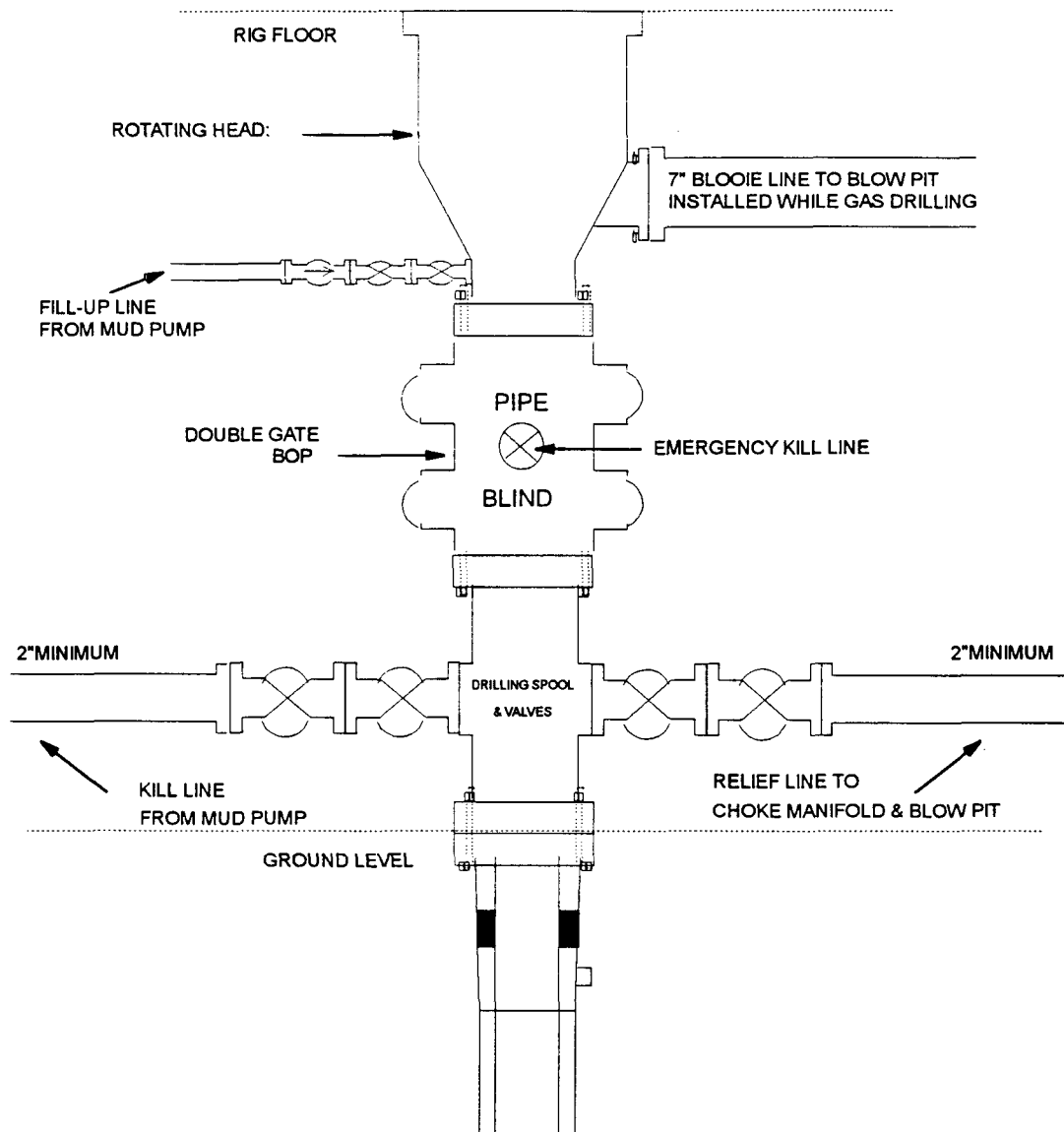
Additional Information:

- The Dakota formation will be completed.
- No abnormal temperatures or hazards are anticipated.
- Anticipated pore pressures are as follows:

Fruitland Coal	1000 psi
Pictured Cliffs	900 psi
Mesa Verde	700 psi
Dakota	2000 psi
- Sufficient LCM will be added to the mud system to maintain well control, if lost circulation is encountered below the top of the Pictured Cliffs.
- The west half of Section 11 is dedicated to the Dakota in this well.
- This gas is dedicated.

MERIDIAN OIL INC

BOP Configuration 2M psi System

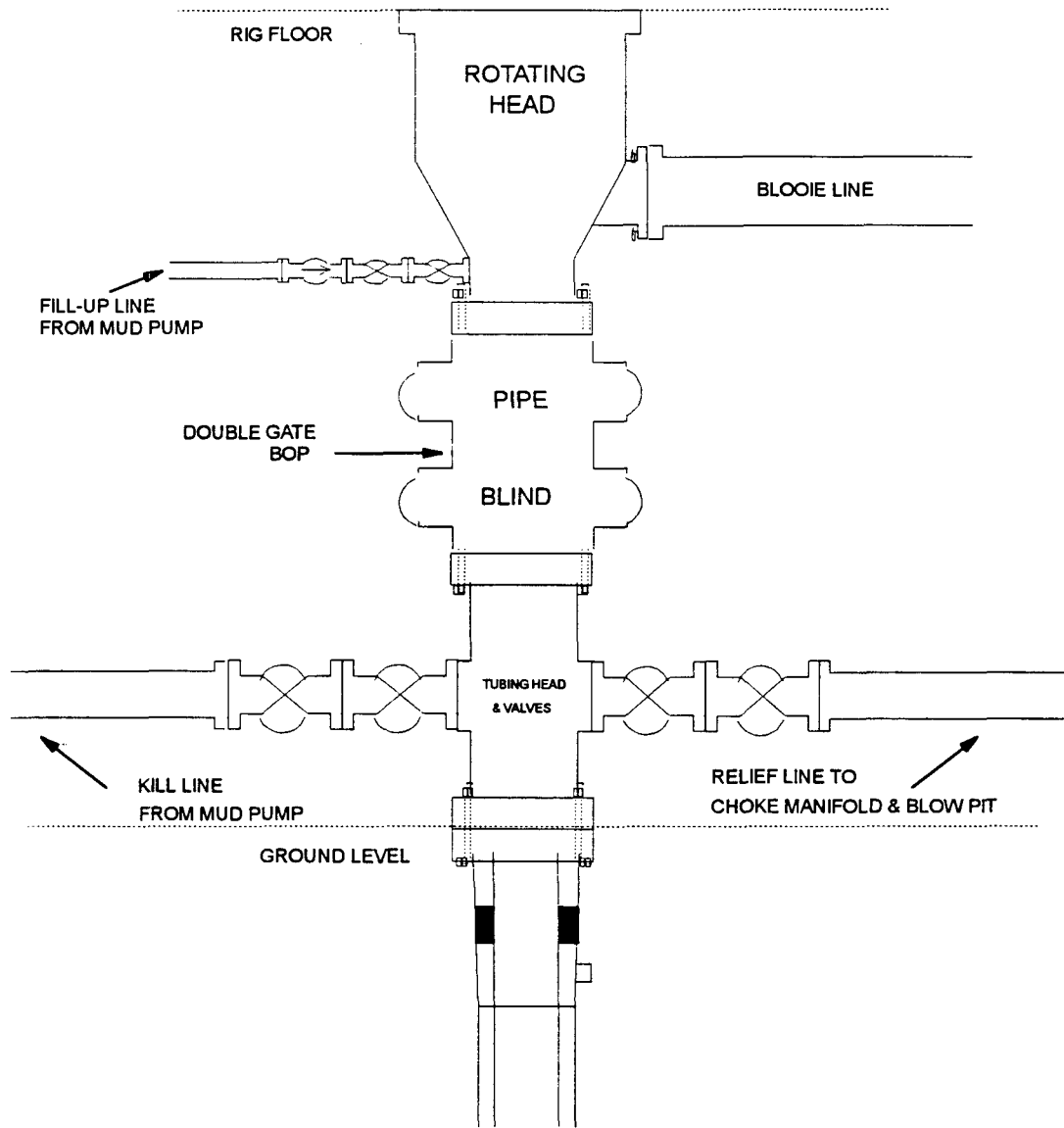


13 5/8" and 11" Bore, 2000psi minimum working pressure double gate BOP to be equipped with blind and pipe rams. A Schaffer Type 50 or equivalent rotating head to be installed on the top of the BOP. All equipment is 2000psi working pressure/ or greater.

FIGURE #1

MERIDIAN OIL INC

BOP Configuration 2M psi System

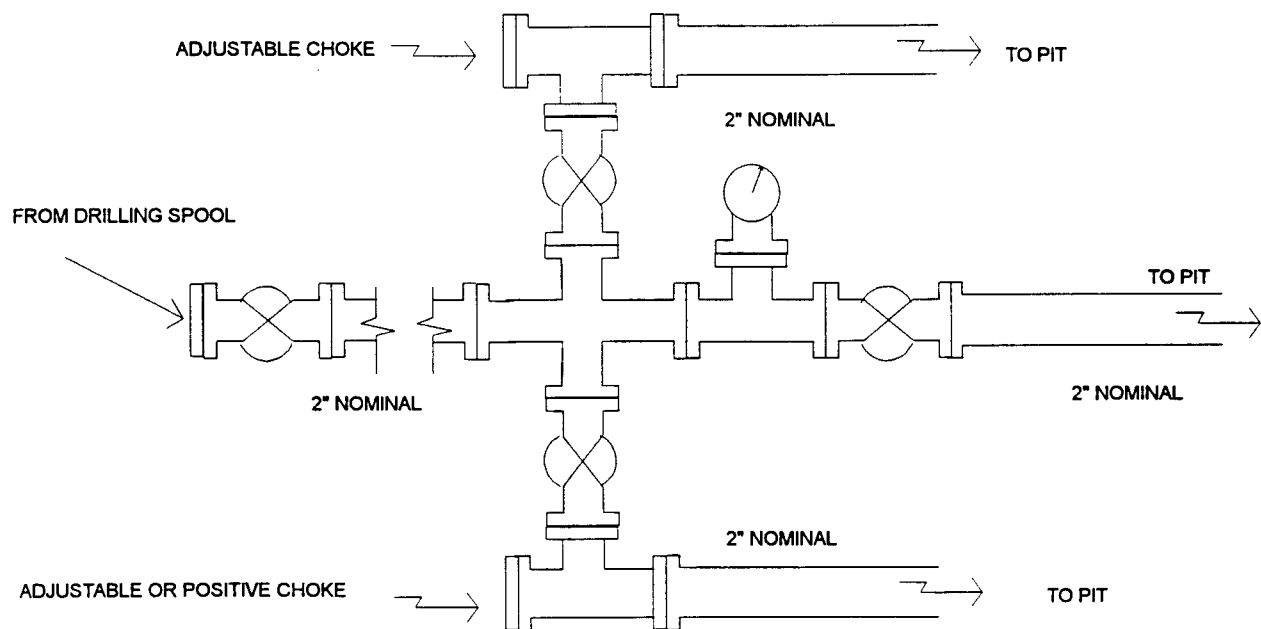


Minimum BOP installation for Completion operations. 7 1/16" Bore (6" Nominal), 3000 psi minimum working pressure double gate BOP to be equipped with blind and pipe rams.

FIGURE #2

MERIDIAN OIL INC.

Choke Manifold Configuration 2M System



Minimum choke manifold installation from surface to Total Depth.
2" minimum, 2000psi working pressure equipment with two chokes.

Figure #3

MERIDIAN OIL
Payne #2E
Multi-Point Surface Use Plan

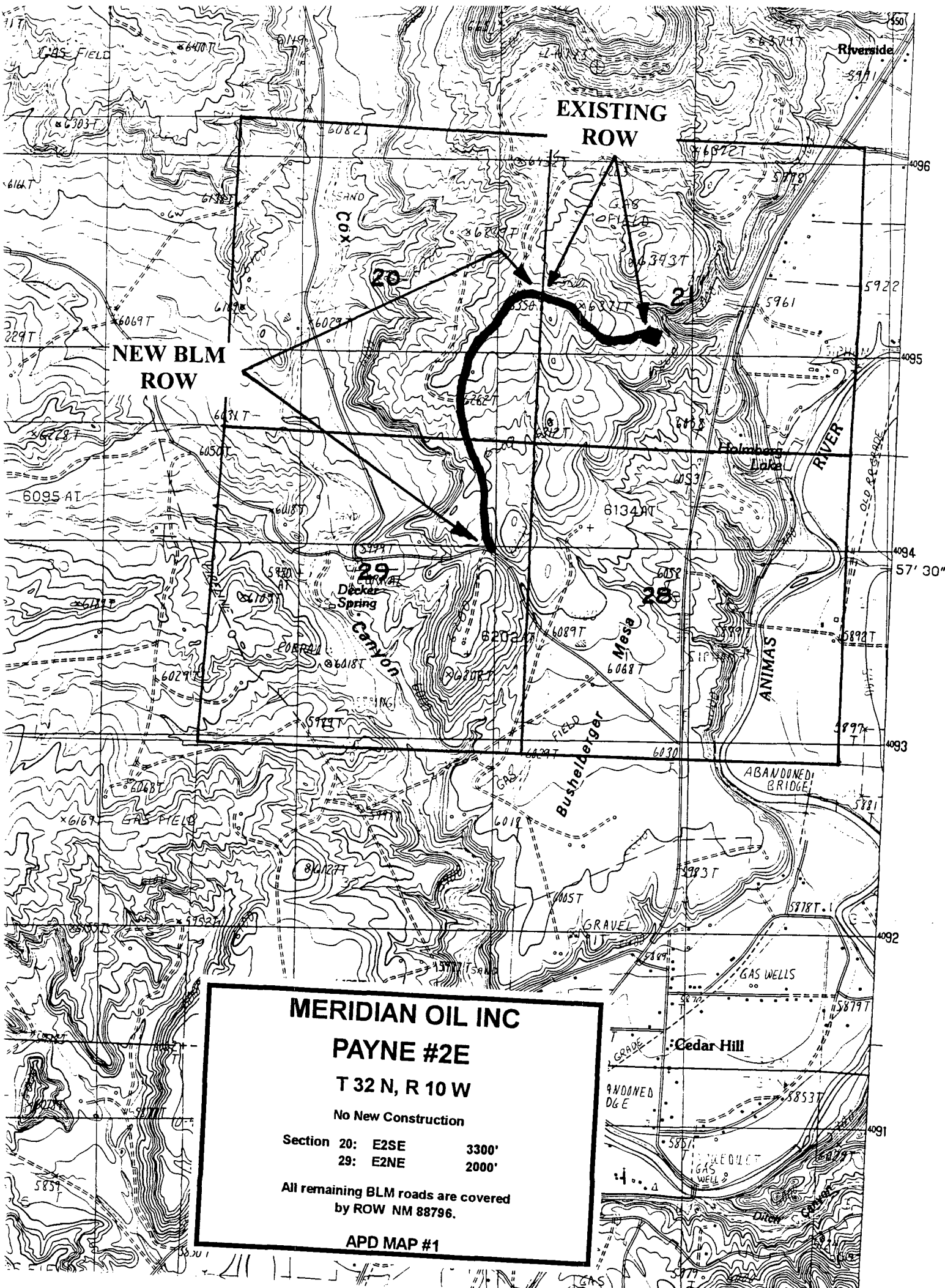
1. Existing Roads - Refer to Map No. 1. Existing roads used to access the proposed location will be properly maintained for the duration of the project. Bureau of Land Management right-of-way has been applied for as shown on Map No. 1.
2. Planned Access Road - Refer to Map No. 1. None required.
3. Location of Existing Wells - Refer to Map No. 1A.
4. Location of Existing and/or Proposed Facilities if Well is Productive -
 - a. On the Well Pad - Refer to Plat No. 1, anticipated production facilities plat.
 - b. Off the Well Pad - Anticipated facilities off the well pad will be applied for as required.
5. Location and Type of Water Supply - Water will be hauled by truck for the proposed project and will be obtained from Decker Springs Water Hole located in NW/4 Sec. 29, T-32-N, R-10-W, New Mexico
6. Source of Construction Materials - If construction materials are required for the proposed project, such materials will be obtained from a commercial quarry.
7. Methods of Handling Waste Materials - All garbage and trash materials will be removed from the site for proper disposal. A portable toilet will be provided for human waste and serviced in a proper manner. If liquids are left in the reserve pit after completion of the project, the pit will be fenced until the liquids have had adequate time to dry. The location clean-up will not take place until such time as the reserve pit can be properly covered over to prevent run-off from carrying waste materials into the watershed. Reserve pits will be lined as needed with either 12 mil bio-degradable plastic liner or a bentonite liner. All earthen pits will be so constructed as to prevent leakage from occurring; no earthen pit will be located on natural drainage. Generation of hazardous waste is not anticipated. Federal regulations will be adhered to regarding handling and disposal of such waste if so generated.
8. Ancillary Facilities - None anticipated.
9. Wellsite Layout - Refer to the location diagram and to the wellsite cut and fill diagram (Figure No. 4). The blow pit will be constructed with a 2'/160' grade to allow positive drainage to the reserve pit and prevent standing liquids in the blow pit.

10. Plans for Restoration of the Surface - After completion of the proposed project, the location will be cleaned and leveled. The location will be left in such a condition that will enable reseeding operations to be carried out. Seed mixture as designated by the responsible government agency will be used. The reseeding operations will be performed during the time period set forth by the responsible government agency. The permanent location facilities will be painted as designated by the responsible government agency.
11. Surface Ownership - Bureau of Land Management.
12. Other Information - Environmental stipulations as outlined by the responsible government agency will be adhered to. Refer to the archaeological report for a description of the topography, flora, fauna, soil characteristics, dwellings, historical and cultural sites.
13. Operator's Representative and Certification - Meridian Oil Regional Drilling Manager, Post Office Box 4289, Farmington, NM 87499, telephone (505) 326-9700. I hereby certify that I, or persons under my direct supervision, have inspected the proposed drill site and access route; that I am familiar with the conditions which presently exist; that the statements made in this plan, are to the best of my knowledge, true and correct; and that the work associated with the operations proposed herein will be performed by Meridian Oil Inc. and its contractors and subcontractors in conformity with this plan and the terms and conditions under which it is approved.


Regional Drilling Engineer

12/1/95
Date

JWC:pb



**EXISTING
ROW**

**NEW BLM
ROW**

MERIDIAN OIL INC

PAYNE #2E

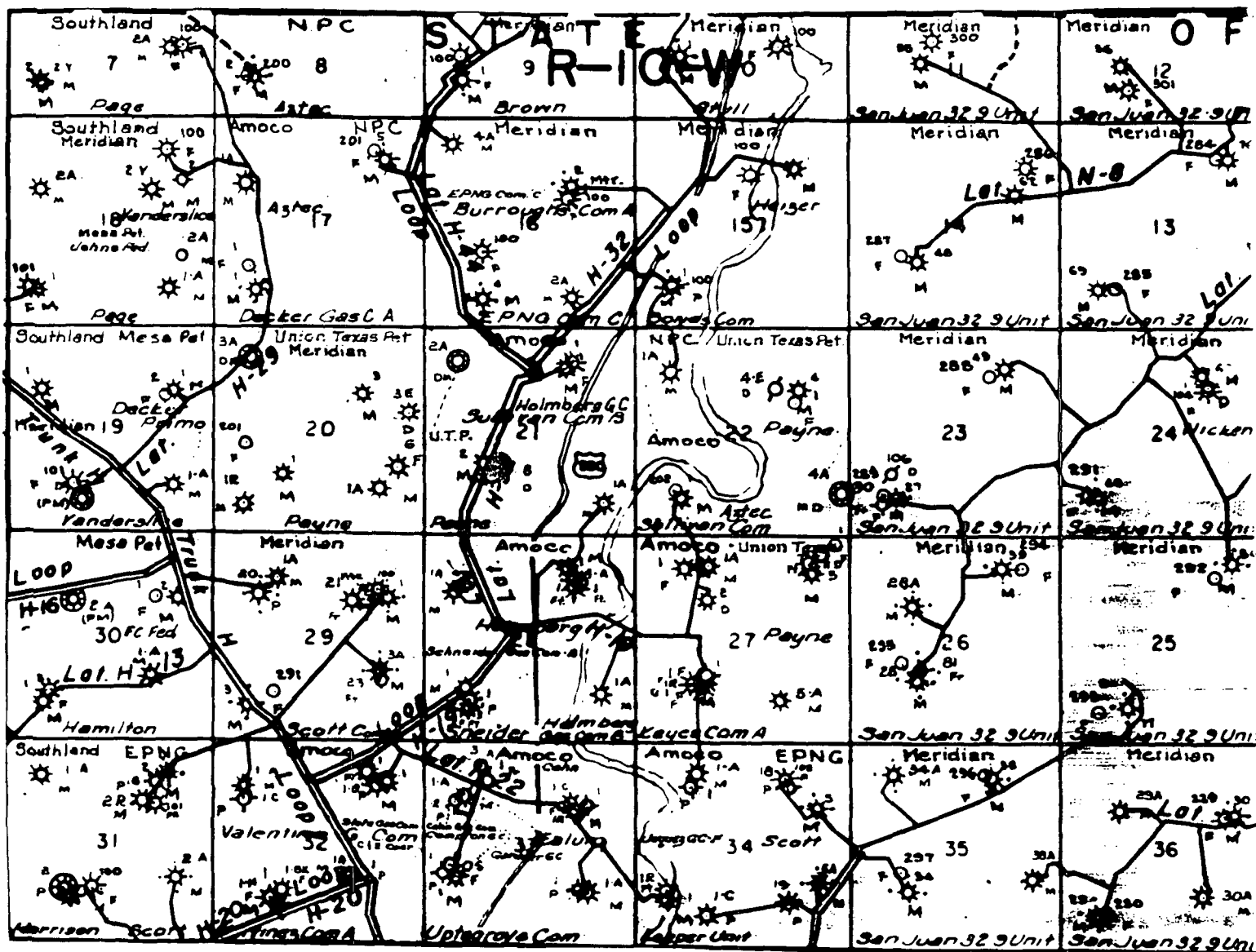
T 32 N, R 10 W

No New Construction

Section 20:	E2SE	3300'
29:	E2NE	2000'

**All remaining BLM roads are covered
by ROW NM 88796.**

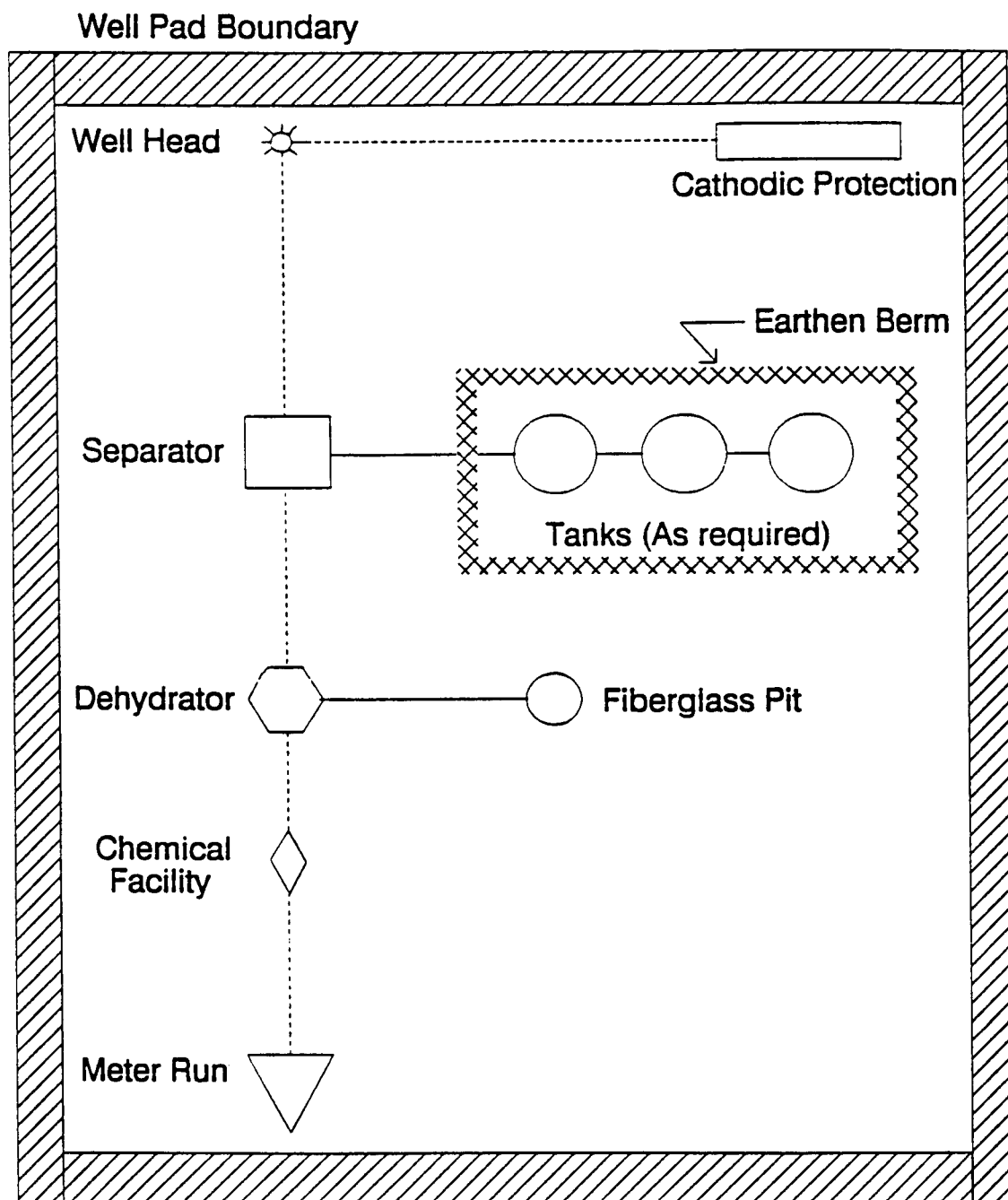
APD MAP #1



MERIDIAN OIL INC.
 Pipeline Map
 T-32-N, R-10-W
 San Juan County, New Mexico

MAP #1A
 PAYNE #2A

3/91 adw/mjb



PLAT #1

MERIDIAN OIL

ANTICIPATED
PRODUCTION FACILITIES
FOR A
DAKOTA WELL

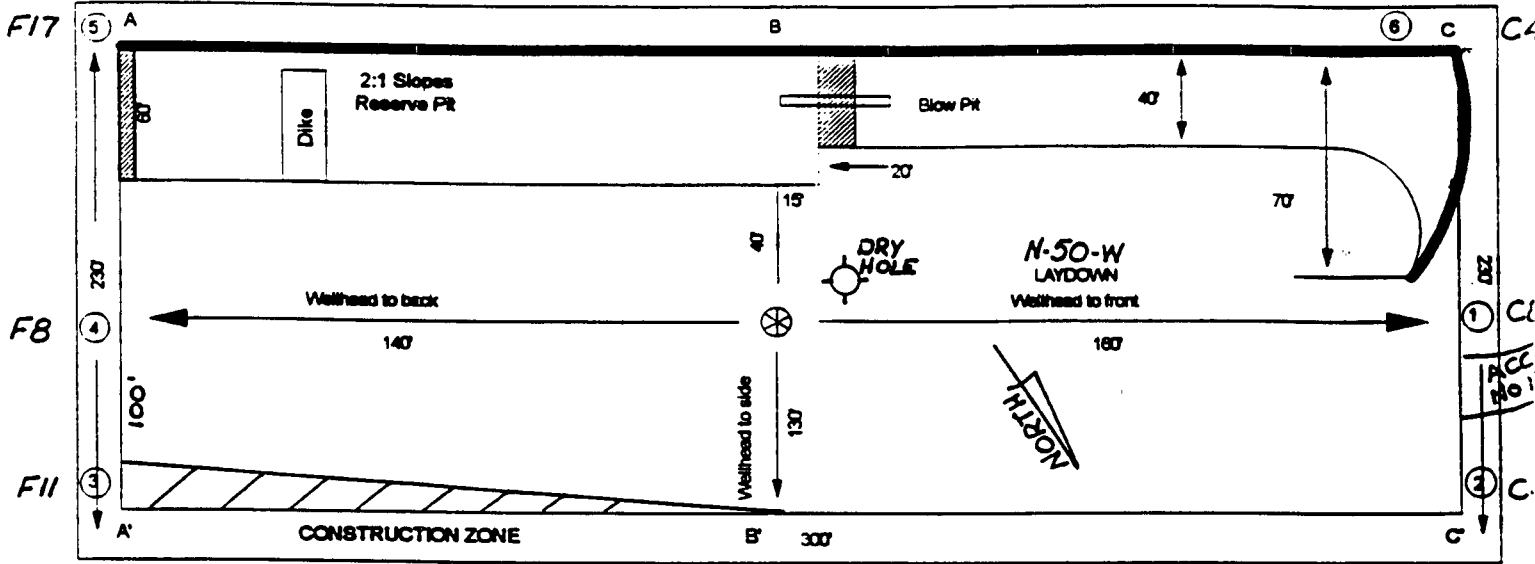
SFF 8/91

VERIDIAN OIL

PLAT #1

PC/FC LOW POTENTIAL

NAME: PAYNE #2E
 FOOTAGE: 1845' FSL 1895' FWL
 SEC 21 TWN 32 N.R. 10 W NMPM
 CO: SAN JUAN ST: NEW MEXICO
 ELEVATION: 6265' DATE: 9-17-95



230'X300'

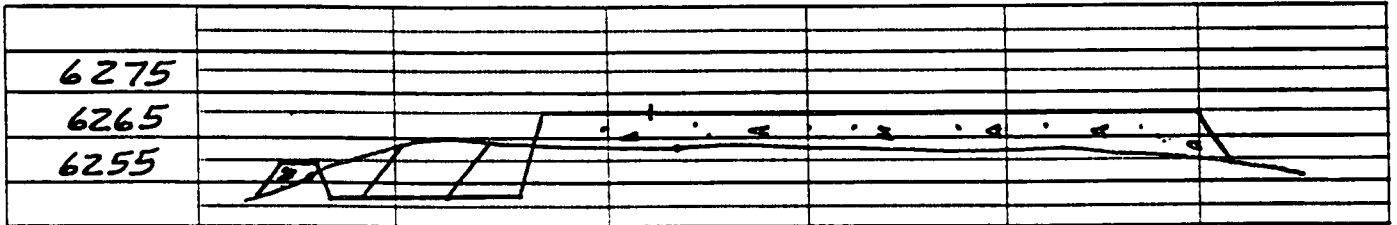
(330'X 400') = 3.03 ACRES

Reserve Pit Dike : to be 6" above Deep side; (overflow - 3' wide and 1' above shallow side.)

Blow Pit : overflow pipe halfway between top and bottom and extend over plastic liner and into blow pit.

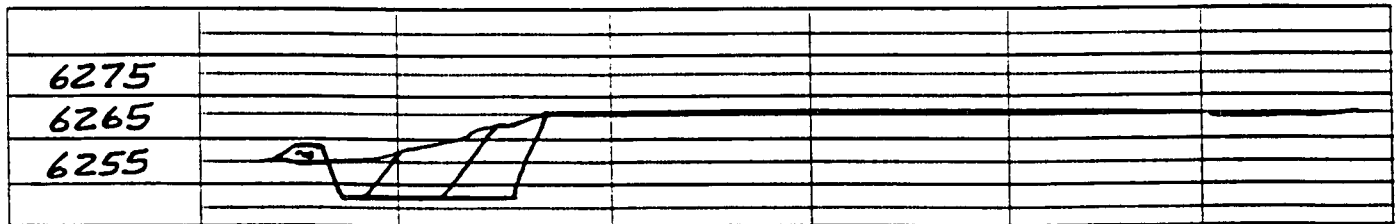
A-A'

C/L



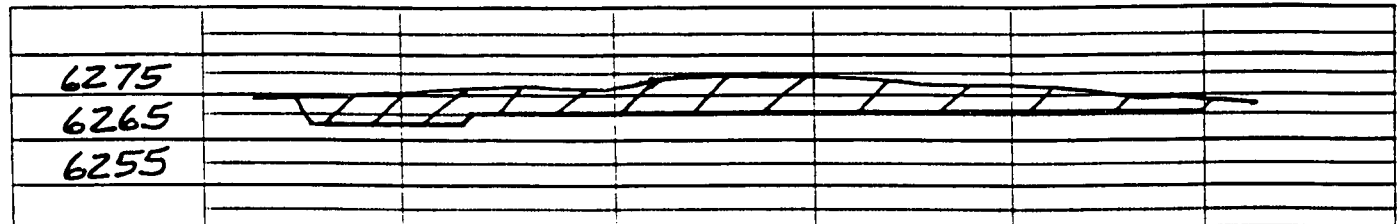
B-B'

C/L



C-C'

C/L



Note: Contractor should call One-Call for location of any marked or unmarked buried pipelines or cables on well pad and/or access road at least 2 working days prior to construction.

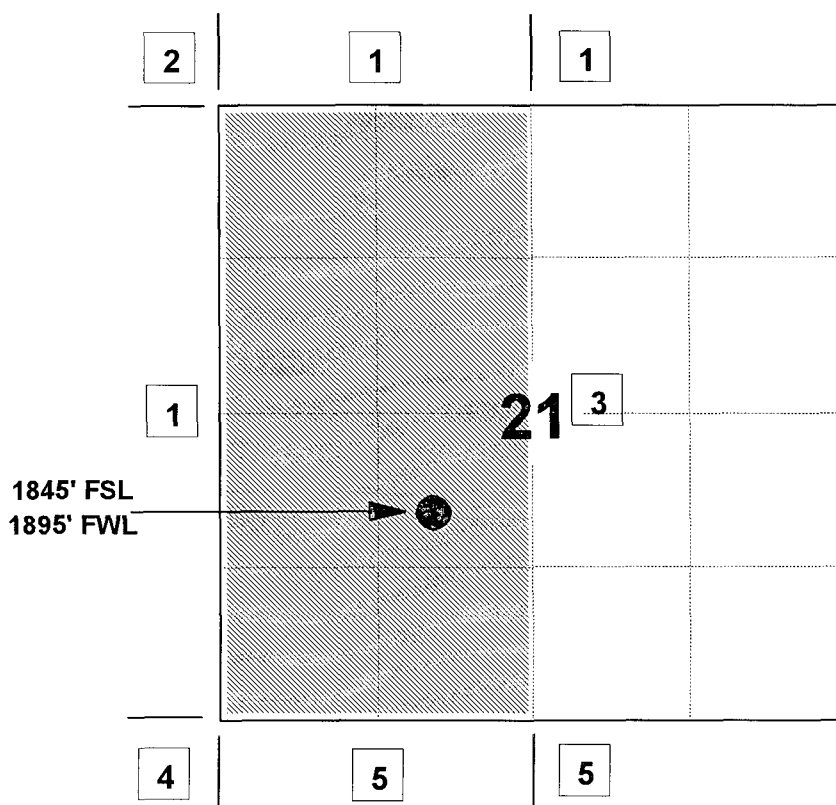
MERIDIAN OIL INC

PAYNE #2E

OFFSET OPERATOR \ OWNER PLAT

Unorthodox Dakota Well Location

Township 32 North, Range 10 West



1) Meridian Oil Inc

2) Phillips Petroleum Co 5525 Hwy. 64, NBU 3004, Farmington, NM 87401

3) Amoco Production Company PO Box 800, Denver, CO 80201

4) Meridian Oil Inc & Amoco Production Co

5) Meridian Oil Inc, Amoco Production Co &

Total Minatome Corp P.O. Box 4326 Houston, TX 77210-4326

Robert Umbach Post Office Box 5310, Farmington, NM 87499

George W. Umbach P. O. Box 95247, Las Vegas, NV 89193-5247

Lowell White Family Trust c/o Sunwest Bank of Albuquerque
P.O. Box 25500 Albuquerque, NM 87125-0500

Mary Emily Voller " "

T. G. Cornish " "

Estate of G. W. Hannett " "

Patricia Hueter " "

Walter A. Steele " "

A. T. Hannett II " "

Re: Payne #2E
1845'FSL, 1895'FWL Section 21, T-32-N, R-10-W - San Juan County, New Mexico
API # 30-045-(not yet assigned)

I hereby certify that the following offset operators/owners have been mailed notification of our application for non-standard location to drill the referenced well.

Phillips Petroleum
5525 Highway 64, NBU 3004
Farmington, NM 87401

Amoco Production
PO Box 800
Denver, Colorado 80201

Total Minatome Corp
PO Box 4326
Houston, TX 77210-4326

Robert Umbach
PO Box 5310
Farmington, NM 87499

George W. Umbach
PO Box 95247
Las Vegas, NV 89193-5247

Lowell White Family Trust
c/o Sunwest Bank of Albuquerque
PO Box 25500
Albuquerque, NM 87125-0500

Mary Emily Voller
c/o Sunwest Bank of Albuquerque
PO Box 25500
Albuquerque, NM 87125-0500

T. G. Cornish
c/o Sunwest Bank of Albuquerque
PO Box 25500
Albuquerque, NM 87125-0500

Estate of G. W. Hannett
c/o Sunwest Bank of Albuquerque
PO Box 25500
Albuquerque, NM 87125-0500

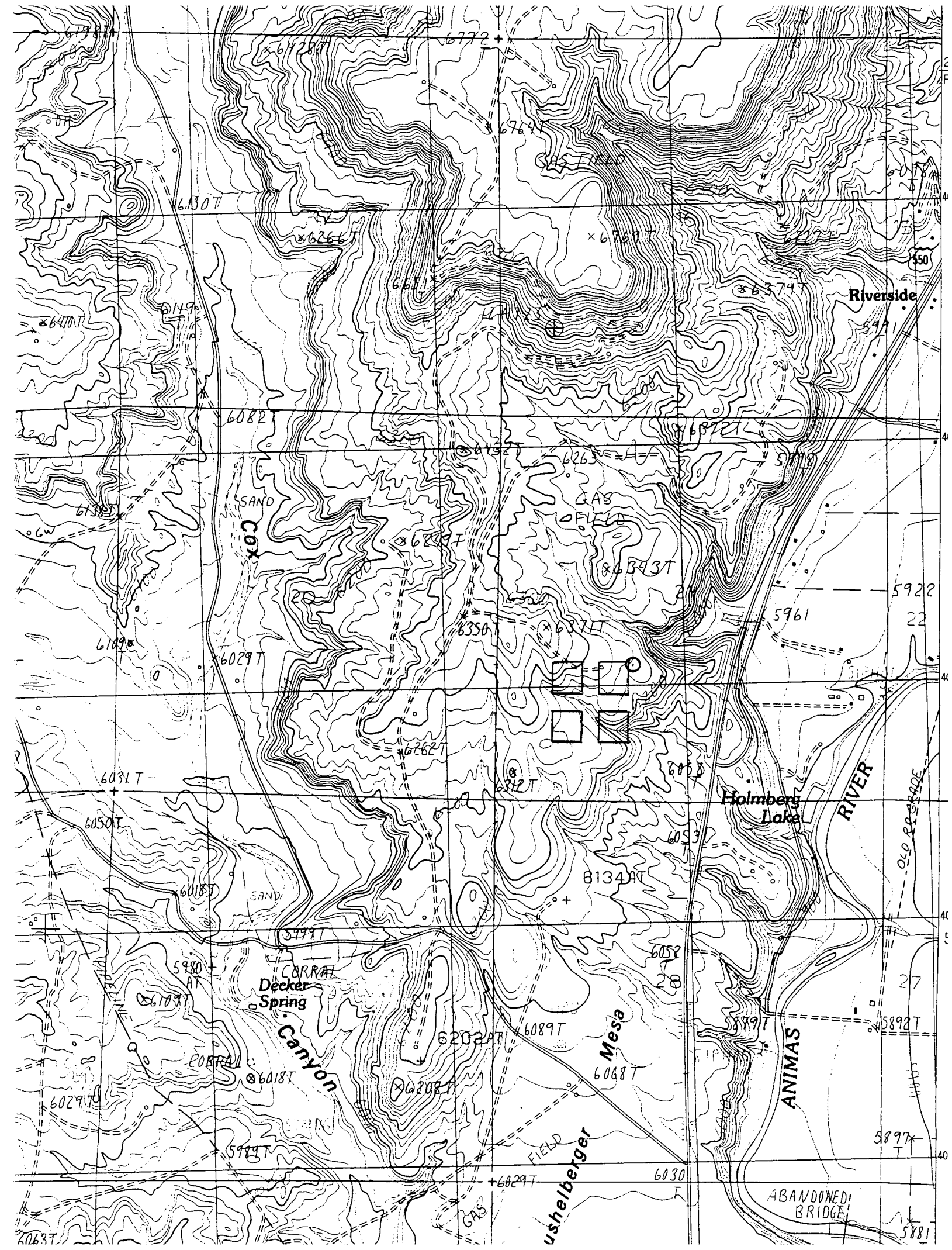
Patricia Hueter
c/o Sunwest Bank of Albuquerque
PO Box 25500
Albuquerque, NM 87125-0500

Walter A. Steele
c/o Sunwest Bank of Albuquerque
PO Box 25500
Albuquerque, NM 87125-0500

A. T. Hannett II
c/o Sunwest Bank of Albuquerque
PO Box 25500
Albuquerque, NM 87125-0500



Peggy A. Bradfield
Regulatory/Compliance Representative



7.5 MINUTE SERIES (TOPOGRAPHIC)



January 3, 1996

Sent Federal Express

Mr. William LeMay
New Mexico Oil Conservation Division
2040 South Pacheco
Santa Fe, New Mexico 87505

Re: Payne #2E
1845'FSL, 1895'FWL Section 21, T-32-N, R-10-W - San Juan County, New Mexico
API # 30-045-(not yet assigned)

Dear Mr. LeMay:

Meridian Oil Inc. is applying for administrative approval of a non-standard location for the above location in the Basin Dakota formation. This application for the referenced location is due to terrain as shown on the topographic map, the presence of extensive archaeology and the presence of pipelines, and at the request of the Bureau of Land Management.

The following attachments are for your review:

1. Application for Permit to Drill.
2. Completed C-102 at referenced location.
3. Offset operators/owners plat.
4. 7.5 minute topographic map showing the orthodox windows, and enlargement of the map to define topographic features.

A copy of this application is being submitted to all offset owners/ operators by certified mail with a request that they furnish you with a Waiver of Objection, and return one copy to this office.

Sincerely,

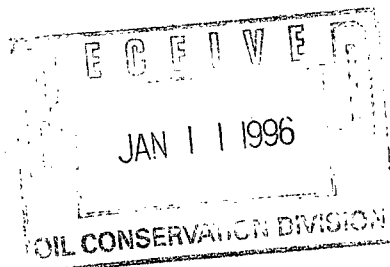

Peggy Bradfield
Regulatory/Compliance Representative
encs.

WAIVER

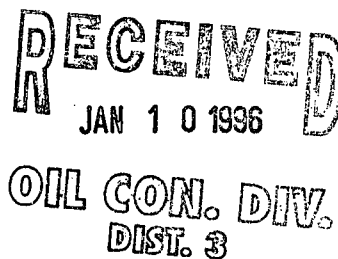
PHILLIPS PETROLEUM Co. hereby waives objection to Meridian Oil's application for a non-standard location for their Payne #2E as proposed above.

By: Richard H. Neal Date: 1/8/96

xc: see attached list



Mike Stogner



NEW MEXICO ENERGY, MINERALS AND NATURAL RESOURCES DEPARTMENT
 OFFICE OF THE SECRETARY
 INQUIRY LAND BY SECTION
 PAGE NO: 1

Sec : 21 Twp : 32N Rng : 10W Section Type : NORMAL

3 39.36 Federal owned A	2 39.34 Federal owned	1 39.64 Federal owned A A A	A 40.00 Fee owned
4 39.33 Federal owned	5 39.31 Federal owned	G 40.00 Federal owned	H 40.00 Fee owned

PF01 HELP PF02 PF03 EXIT PF04 GoTo PF05 PF06
 PF07 BKWD PF08 FWD PF09 PRINT PF10 SDIV PF11 PF12

78.69
 78.65
 78.69
 157.34

NEW MEXICO ENERGY, MINERALS AND NATURAL RESOURCES DEPARTMENT

Sec : 21 Twp : 32N Rng : 10W Section Type : NORMAL

7 39.47	6 39.72	J 40.00	I 40.00
Federal owned	Federal owned	Fee owned	Fee owned
A	A A		
8 39.39	9 39.64	O 40.00	P 40.00
Federal owned	Federal owned	Fee owned	Fee owned
			A

```
PF01  HELP      PF02          PF03  EXIT      PF04  GoTo      PF05          PF06
PF07  BKWD      PF08  FWD      PF09  PRINT     PF10  SDIV      PF11          PF12
```

$$\begin{array}{r} 78.86 \\ 79.36 \\ 78.86 \\ \hline 158.22 \\ 157.34 \\ \hline 315.56 \end{array}$$

API Well No : 30 45 23910 Eff Date : 10-01-1980 WC Status : A
 Pool Idn : 71599 BASIN DAKOTA (PRORATED GAS)
 OGRID Idn : 14538 MERIDIAN OIL INC
 Prop Idn : 7379 PAYNE

Well No : 002A
 GL Elevation: 99999

	U/L	Sec	Township	Range	North/South	East/West	Prop/Act (P/A)
	---	---	-----	-----	-----	-----	-----
B.H. Locn : 3	21	32N	10W	FTG	999 F S	FTG 999 F E	P

Lot Identifier:
 Dedicated Acre: 315.56
 Lease Type : F
 Type of consolidation (Comm, Unit, Forced Pooling - C/U/F/O) :

M0025: Enter PF keys to scroll

PF01 HELP	PF02	PF03 EXIT	PF04 GoTo	PF05	PF06
PF07	PF08	PF09	PF10 NEXT-WC	PF11 HISTORY	PF12 NXTREC

CMD :

ONGARD

01/29/96 12:38:21

016 WCV

INITIAL WELL COMPLETION

OGMAS TYPE

NEW MEXICO ENERGY, MINERALS AND NATURAL RESOURCES DEPARTMENT

API Well No : 30 45 23910 Eff Date : 10-01-1980 WC Status : S
Pool Idn : 72319 BLANCO-MESAVERDE (G)
OGRID Idn : 14538 MERIDIAN OIL INC
Prop Idn : 7379 PAYNE

Well No : 002A
GL Elevation: 99999

	U/L	Sec	Township	Range	North/South	East/West	Prop/Act (P/A)
	---	---	-----	-----	-----	-----	-----
B.H. Locn : 3	21	32N	10W	FTG	999 F S	FTG 999 F E	P
Lot Identifier:							
Dedicated Acre: 315.56							
Lease Type : F							
Type of consolidation (Comm, Unit, Forced Pooling - C/U/F/O) :							

PF01 HELP	PF02	PF03 EXIT	PF04 GoTo	PF05	PF06
PF07	PF08	PF09	PF10 NEXT-WC	PF11 HISTORY	PF12 NXTREC