



Texaco Exploration
and Production Inc

500 North Loraine
Midland TX 79701

P O Box 3109
Midland TX-79702

NSL- 3625. AMD

May 20, 1996

GOV - STATE AND LOCAL GOVERNMENTS

Unorthodox Location - Amended Pool

Administrative Order NSL-3625

G. L. Erwin "B" Federal NCT-2 Well No. 8

Justis Blinebry, Justis Tubb Drinkard and

Justis Fusselman, North Pools

Lea County, New Mexico

State of New Mexico

Energy and Minerals Department

Oil Conservation Division

2040 South Pacheco

Santa Fe, New Mexico 87505

Attention: Mr. Michael E. Stogner

Gentlemen:

Texaco requests the Justis Fusselman, North pool be added to Administrative Order NSL-3625 and the North Justis McKee pool be dropped. The North Justis McKee pool was non-productive in this well and we are currently testing the Justis Fusselman, North pool. We also request the Justis-Blinebry and Justis Tubb-Drinkard remain on the Order.

There are no "affected" offset operators to this location. Attached to Form C-102.

Any questions concerning this request should be directed to the undersigned at (915) 688-4606.

Yours very truly,

C. Wade Howard

C. W. Howard
Engineer Assistant

CWH:cwh Attachments cc: BLM, P. O. Box 1778, Carlsbad, NM 88220

RECEIVED

MAY 22 1996

Oil Conservation Division

DISTRICT I
P. O. Box 1980, Hobbs, NM 88240

DISTRICT II
P. O. Drower DD, Artesia, NM 88210

DISTRICT III
1000 Rio Brazos Rd., Aztec, NM 87410

DISTRICT IV
P. O. Box 2088, Santa Fe, NM 87504-2088

State of New Mexico
Energy, Minerals and Natural Resources Department

OIL CONSERVATION DIVISION

PO Box 2088
Santa Fe, NM 87504-2088

Form C-102
Revised February 10, 1994

Instructions on back

Submit to Appropriate District Office

State Lease-4 copies
Fee Lease-3 copies

☐ AMENDED REPORT

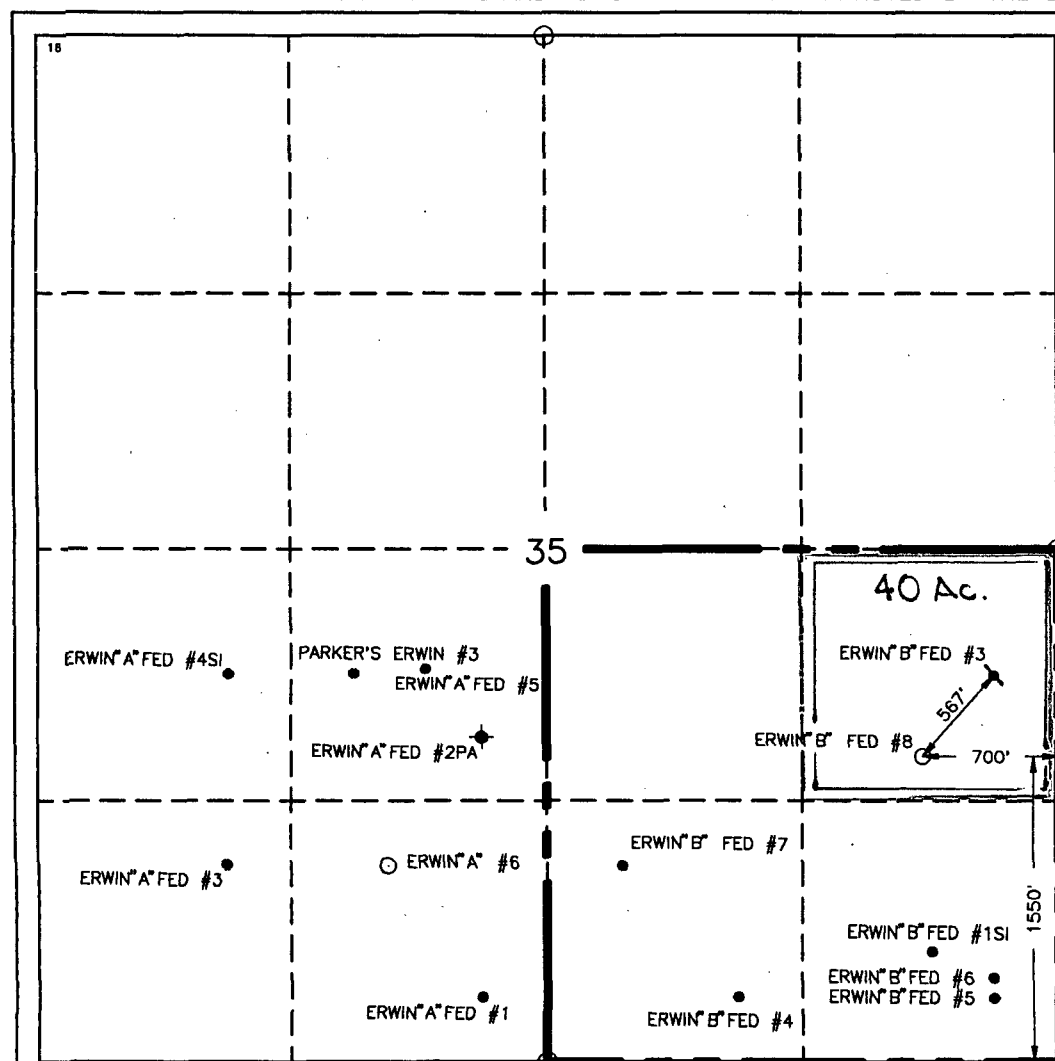
WELL LOCATION AND ACREAGE DEDICATION PLAT

¹ API Number 30-025-33290	² Pool Code	³ Pool Name Justis Blinebry; Justis Tubb Drinkard; Justis Fussleman; North
⁴ Property Code 10931	⁵ Property Name G.L. Erwin "B" Federal NCT-2	⁶ Well Number 8
⁷ OGRID No. 22351	⁸ Operator Name TEXACO EXPLORATION & PRODUCTION, INC.	⁹ Elevation 3163'

¹⁰ Surface Location									
UL or lot no. 1	Section 35	Township 24-S	Range 37-E	Lot Idn	Feet from the 1550'	North/South line South	Feet from the 700'	East/West line East	County Lea

¹¹ Bottom Hole Location If Different From Surface									
UL or lot no.	Section	Township	Range	Lot Idn	Feet from the	North/South line	Feet from the	East/West line	County
¹² Dedicated Acres 40		¹³ Joint or Infill		¹⁴ Consolidation Code		¹⁵ Order No.			

NO ALLOWABLE WILL BE ASSIGNED TO THIS COMPLETION UNTIL ALL INTERESTS HAVE BEEN CONSOLIDATED
OR A NON-STANDARD UNIT HAS BEEN APPROVED BY THE DIVISION.



¹⁶ OPERATOR CERTIFICATION

I hereby certify that the information contained herein is true and complete to the best of my knowledge and belief.

Signature

C. Wade Howard

Printed Name

C. Wade Howard

Position

Engineer's Assistant

Company

Texaco Expl. & Prod. Inc.

Date

December 1, 1995

¹⁸ SURVEYOR CERTIFICATION

I hereby certify that the well location shown on this plat was plotted from field notes of actual surveys made by me or under my supervision, and that the same is true and correct to the best of my knowledge and belief.

Date Surveyed

November 29, 1995

Signature & Seal of
Professional Surveyor

Certificate No.

7254 John S. Piper