

MERIDIAN OIL

OIL CONSERVATION DIVISION
RECEIVED

'95 MAR 2 AM 8 52

April 26, 1995

Sent Federal Express

Mr. Michael Stogner
New Mexico Oil Conservation Division
2040 South Pacheco
Santa Fe, New Mexico 87505

Re: Meridian Oil Inc. San Juan 29-7 Unit #83A
950'FSL, 595'FEL Section 3, T-29-N, R-7-W - Rio Arriba County, New Mexico
API # 30-039-not assigned

Dear Mr. Stogner:

Meridian Oil Inc. is applying for administrative approval of a non-standard location for the above location in both the Blanco Pictured Cliffs and Blanco Mesa Verde formations. This application for the referenced location is due to terrain as shown on the topographic map, and at the request of the Bureau of Land Management due to extensive archaeology in this section.

The following attachments are for your review:

1. Application for Permit to Drill (at 1055'FSL, 540'FEL - before last location move).
2. Completed C-102 at referenced location.
3. Offset operators/owners plat.
4. 7.5 minute topographic map showing the orthodox windows, and enlargement of the map to define topographic features.

Meridian Oil is the offsetting operator to this well.

Sincerely,



Peggy Bradfield
Regulatory/Compliance Administrator

encs.

NBL - 2 PLS. L

UNITED STATES
DEPARTMENT OF THE INTERIOR
BUREAU OF LAND MANAGEMENT

Sundry Notices and Reports on Wells

1. Type of Well
GAS

2. Name of Operator
MERIDIAN OIL

3. Address & Phone No. of Operator
PO Box 4289, Farmington, NM 87499 (505) 326-9700

4. Location of Well, Footage, Sec., T, R, M
950'FSL, 595'FEL, Sec.3, T-29-N, R-7-W, NMPM

5. Lease Number
SF-079514

6. If Indian, All. or
Tribe Name

7. Unit Agreement Name

San Juan 29-7 Unit
8. Well Name & Number
San Juan 29-7 U #83A

9. API Well No.
30-039-

10. Field and Pool
Blanco Pictured Cliffs/
Blanco Mesaverde

11. County and State
Rio Arriba Co, NM

12. CHECK APPROPRIATE BOX TO INDICATE NATURE OF NOTICE, REPORT, OTHER DATA

Type of Submission

☒ Notice of Intent
☐ Subsequent Report
☐ Final Abandonment

Type of Action

☐ Abandonment
☐ Recompletion
☐ Plugging Back
☐ Casing Repair
☐ Altering Casing
☐ Other -
☒ Change of Plans
☐ New Construction
☐ Non-Routine Fracturing
☐ Water Shut off
☐ Conversion to Injection

13. Describe Proposed or Completed Operations

The location of the subject well has been changed from 1055'FSL, 540'FEL,
Sec.3, T-29-N, R-7-W.

14. I hereby certify that the foregoing is true and correct.

Signed [Signature] (JCG7) Title Regulatory Affairs Date 4/19/95

(This space for Federal or State Office use)

APPROVED BY _____ Title _____ Date _____

CONDITION OF APPROVAL, if any:

Instructions on back
Submit to Appropriate District Office
State Lease - 4 Copies
Fee Lease - 3 Copies

☐ AMENDED REPORT

OIL CONSERVATION DIVISION
PO Box 2088
Santa Fe, NM 87504-2088

WELL LOCATION AND ACREAGE DEDICATION PLAT

| | | | | | |
|-----------------|--|--------------------|--|---|---------------|
| 1 AFI Number | | 1 Pool Code | | 1 Pool Name | |
| 30-039- | | 72359/72319 | | Blanco Pictured Cliffs/Blanco Mesaverde | |
| 1 Property Code | | 1 Property Name | | | 1 Well Number |
| 7465 | | San Juan 29-7 Unit | | | 83A |
| 1 OGRID No. | | 1 Operator Name | | | 1 Elevation |
| 14538 | | Meridian Oil Inc. | | | 6520' |

¹⁰ Surface Location

| | | | | | | | | | |
|---------------|---------|----------|-------|---------|---------------|------------------|---------------|----------------|--------|
| UL or lot no. | Section | Township | Range | Lot Ida | Feet from the | North/South line | Feet from the | East/West line | County |
| P | 3 | 29 N | 7 W | | 950 | South | 595 | East | R.A. |

" Bottom Hole Location If Different From Surface

| UL or lot no. | Section | Township | Range | Lot Ida | Feet from the | North/South line | Feet from the | East/West line | County |
|---------------|---------|----------|-------|---------|---------------|------------------|---------------|----------------|--------|
|---------------|---------|----------|-------|---------|---------------|------------------|---------------|----------------|--------|

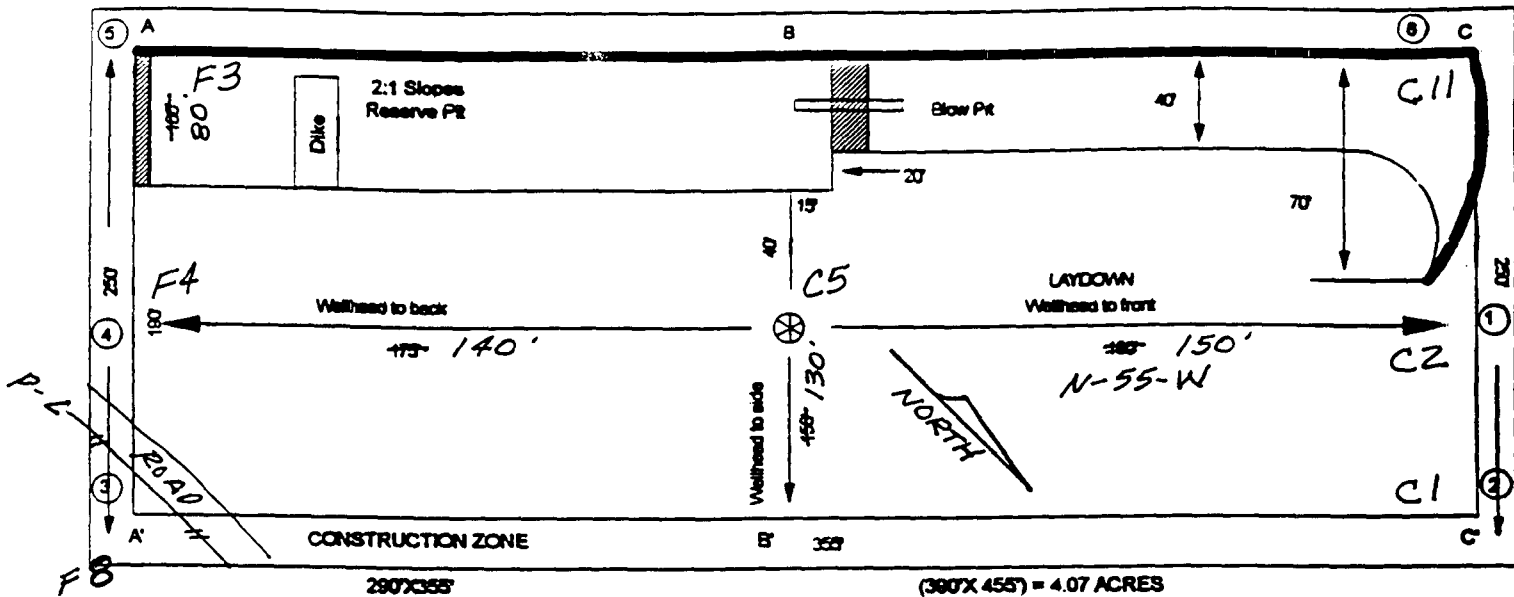
| | | | |
|-------------------------------|-------------------------------|----------------------------------|-------------------------|
| ¹³ Dedicated Acres | ¹³ Joint or Infill | ¹⁴ Consolidation Code | ¹⁵ Order No. |
| E/318.05-160 | | | |

**NO ALLOWABLE WILL BE ASSIGNED TO THIS COMPLETION UNTIL ALL INTERESTS HAVE BEEN CONSOLIDATED
OR A NON-STANDARD UNIT HAS BEEN APPROVED BY THE DIVISION**

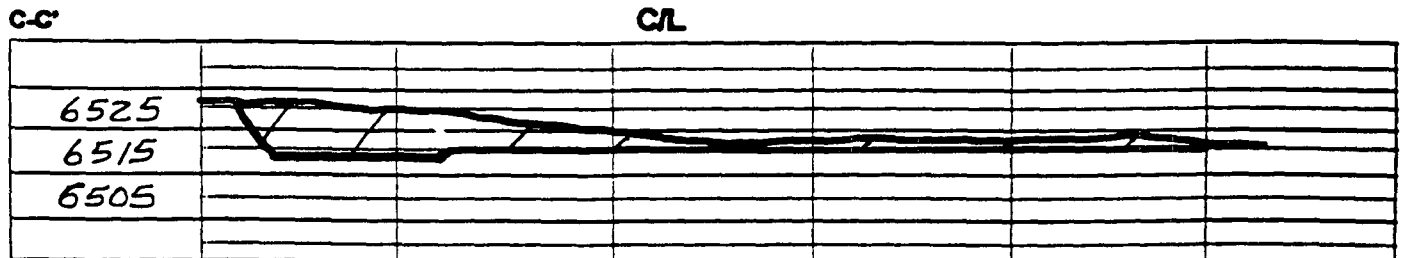
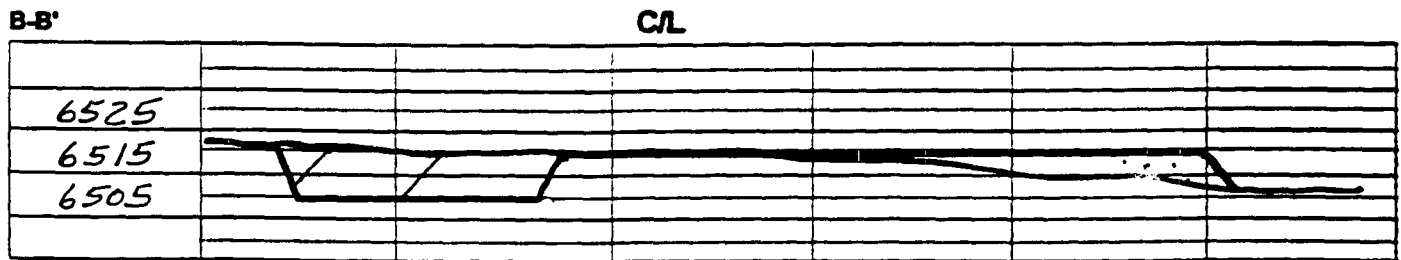
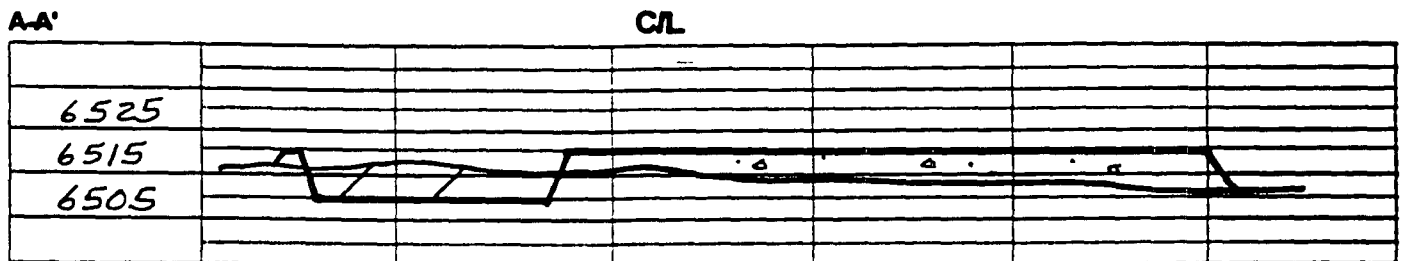
| | | | |
|---|---|---|---|
| <div style="position: relative; height: 100px;"> 5280.00' 5242.38' </div> | <div style="position: relative; height: 100px;"> 5280.00' 5242.38' </div> | <div style="position: relative; height: 100px;"> 5280.00' 5242.38' </div> | <div style="position: relative; height: 100px;"> 5280.00' 5242.38' </div> |
| 8 | 7 | 6 | 5 |
| | | <div style="position: relative; height: 100px;"> 5280.00' 5242.38' </div> | |
| | | <div style="position: relative; height: 100px;"> 5280.00' 5242.38' </div> | |
| | | <div style="position: relative; height: 100px;"> 5280.00' 5242.38' </div> | |
| | | <div style="position: relative; height: 100px;"> 5280.00' 5242.38' </div> | |
| | | <div style="position: relative; height: 100px;"> 5280.00' 5242.38' </div> | |
| | | <div style="position: relative; height: 100px;"> 5280.00' 5242.38' </div> | |
| | | <div style="position: relative; height: 100px;"> 5280.00' 5242.38' </div> | |
| | | <div style="position: relative; height: 100px;"> 5280.00' 5242.38' </div> | |
| | | <div style="position: relative; height: 100px;"> 5280.00' 5242.38' </div> | |
| | | <div style="position: relative; height: 100px;"> 5280.00' 5242.38' </div> | |
| | | <div style="position: relative; height: 100px;"> 5280.00' 5242.38' </div> | |
| | | <div style="position: relative; height: 100px;"> 5280.00' 5242.38' </div> | |
| | | <div style="position: relative; height: 100px;"> 5280.00' 5242.38' </div> | |
| | | <div style="position: relative; height: 100px;"> 5280.00' 5242.38' </div> | |
| | | <div style="position: relative; height: 100px;"> 5280.00' 5242.38' </div> | |
| | | <div style="position: relative; height: 100px;"> 5280.00' 5242.38' </div> | |
| | | <div style="position: relative; height: 100px;"> 5280.00' 5242.38' </div> | |
| | | <div style="position: relative; height: 100px;"> 5280.00' 5242.38' </div> | |
| | | <div style="position: relative; height: 100px;"> 5280.00' 5242.38' </div> | |
| | | <div style="position: relative; height: 100px;"> 5280.00' 5242.38' </div> | |
| | | <div style="position: relative; height: 100px;"> 5280.00' 5242.38' </div> | |
| | | <div style="position: relative; height: 100px;"> 5280.00' 5242.38' </div> | |
| | | <div style="position: relative; height: 100px;"> 5280.00' 5242.38' </div> | |
| | | <div style="position: relative; height: 100px;"> 5280.00' 5242.38' </div> | |
| | | <div style="position: relative; height: 100px;"> 5280.00' 5242.38' </div> | |
| | | <div style="position: relative; height: 100px;"> 5280.00' 5242.38' </div> | |
| | | <div style="position: relative; height: 100px;"> 5280.00' 5242.38' </div> | |
| | | <div style="position: relative; height: 100px;"> 5280.00' 5242.38' </div> | |
| | | <div style="position: relative; height: 100px;"> 5280.00' 5242.38' </div> | |
| | | <div style="position: relative; height: 100px;"> 5280.00' 5242.38' </div> | |
| | | <div style="position: relative; height: 100px;"> 5280.00' 5242.38' </div> | |
| | | <div style="position: relative; height: 100px;"> </div> | |

ALL MV / ALL DK

NAME: SAN J 129-7 UNIT # 83A
FOOTAGE: 950 FSL 595 FEL
SEC 3 TWN 29 N.R. 7 W NMPM
CO: RIO ARriba ST: N.M.
ELEVATION: 6520' DATE: 3-13-95




Blow Pit : overflow pipe halfway between top and bottom and extend over plastic liner and into blow pit.



Note: Contractor should call One-Call for location of any marked or unmarked buried pipelines or cables on well pad and/or access road at least 2 working days prior to construction.

UNITED STATES
DEPARTMENT OF THE INTERIOR
BUREAU OF LAND MANAGEMENT

APPLICATION FOR PERMIT TO DRILL, DEEPEN, OR PLUG BACK

| | |
|---|--|
| 1a. Type of Work DRILL | 5. Lease Number SF-079514 Unit Reporting Number MV-8910016500 |
| 1b. Type of Well GAS | 6. If Indian, All. or Tribe |
| 2. Operator MERIDIAN OIL | 7. Unit Agreement Name San Juan 29-7 Unit |
| 3. Address & Phone No. of Operator PO Box 4289, Farmington, NM 87499 (505) 326-9700 | 8. Farm or Lease Name San Juan 29-7 Unit 9. Well Number 83A |
| 4. Location of Well 1055'FSL, 540'FEL Latitude 36° 45' 03", Longitude 107° 33' 03" | 10. Field, Pool, Wildcat Blanco PC/Blanco MV 11. Sec., Twn, Rge, Mer. (NMPM) Sec 3, T-29-N, R-7-W API # 30-039- |
| 14. Distance in Miles from Nearest Town 3 miles to Navajo City | 12. County Rio Arriba |
| 15. Distance from Proposed Location to Nearest Property or Lease Line 540' | 13. State NM |
| 16. Acres in Lease | 17. Acres Assigned to Well 318.05/160 E/2 SE/4 |
| 18. Distance from Proposed Location to Nearest Well, Drlg, Compl, or Applied for on this Lease 900' | 20. Rotary or Cable Tools Rotary |
| 19. Proposed Depth 6400' | 22. Approx. Date Work will Start 2nd quarter 1995 |
| 21. Elevations (DF, FT, GR, Etc.) 6515'GR | 23. Proposed Casing and Cementing Program See Operations Plan attached |
| 24. Authorized by:  Regional Drilling Engineer | Date 1/6/95 |

PERMIT NO. _____ APPROVAL DATE _____

APPROVED BY _____ TITLE _____ DATE _____

NOTE: APD submitted @ 1685'FSL, 1460'FEL 3-29-7 on 9-14-78, rescinded 11-26-79
Archaeological Report to be submitted by Arboles Contract Archaeology
Threatened and Endangered Species Report submitted by Ecosphere dated 11-28-94
NOTE: This format is issued in lieu of U.S. BLM Form 3160-3

District I
PO Box 1980, Hobbs, NM 88241-1980
District II
PO Drawer DD, Artesia, NM 88211-0719
District III
1000 Rio Brazos Rd., Aztec, NM 87410
District IV
PO Box 2088, Santa Fe, NM 87504-2088

State of New Mexico
Energy, Minerals & Natural Resources Department

OIL CONSERVATION DIVISION
PO Box 2088
Santa Fe, NM 87504-2088

Form C-10
Revised February 21, 199
Instructions on bac.
Submit to Appropriate District Office
State Lease - 4 Copies
Fee Lease - 3 Copies

☐ AMENDED REPORT

WELL LOCATION AND ACREAGE DEDICATION PLAT

| | | | | | |
|-----------------|--|--------------------|--|---|---------------|
| 1 APT Number | | 2 Pool Code | | 3 Pool Name | |
| | | 72359/72319 | | Blanco Pictured Cliffs/Blanco Mesaverde | |
| 4 Property Code | | 5 Property Name | | | 6 Well Number |
| 7465 | | San Juan 29-7 Unit | | | 83A |
| 7 OGRID No. | | 8 Operator Name | | | 9 Elevation |
| 14538 | | Meridian Oil Inc. | | | 6515' |

10 Surface Location

| | | | | | | | | | |
|---------------|---------|----------|-------|---------|---------------|------------------|---------------|----------------|--------|
| UL or lot no. | Section | Township | Range | Lot Idn | Feet from the | North/South line | Feet from the | East/West line | County |
| P | 3 | 29-N | 7-W | | 1055 | SOUTH | 540 | EAST | R.A. |

11 Bottom Hole Location If Different From Surface

| | | | | | | | | | |
|---------------|---------|----------|-------|---------|---------------|------------------|---------------|----------------|--------|
| UL or lot no. | Section | Township | Range | Lot Idn | Feet from the | North/South line | Feet from the | East/West line | County |
| | | | | | | | | | |

| | | | |
|--------------------|--------------------|-----------------------|--------------|
| 12 Dedicated Acres | 13 Joint or Infill | 14 Consolidation Code | 15 Order No. |
| E/318.05 - 160 | | | |

NO ALLOWABLE WILL BE ASSIGNED TO THIS COMPLETION UNTIL ALL INTERESTS HAVE BEEN CONSOLIDATED
OR A NON-STANDARD UNIT HAS BEEN APPROVED BY THE DIVISION

| | | | | | | | | | | | |
|----|--|--|--|-------------|--|--|--|---|--|--|--|
| 16 | | | | 5280.00 | | | | 17 OPERATOR CERTIFICATION | | | |
| 8 | | | | 7 | | | | I hereby certify that the information contained herein is true and complete to the best of my knowledge and belief | | | |
| | | | | 6 | | | | Signature | | | |
| | | | | 5 | | | | Peggy Bradfield | | | |
| | | | | NMSF-078945 | | | | Printed Name | | | |
| | | | | | | | | Regulatory Affairs | | | |
| | | | | | | | | Title | | | |
| | | | | | | | | 1-6-95 | | | |
| | | | | | | | | Date | | | |
| | | | | | | | | 18 SURVEYOR CERTIFICATION | | | |
| | | | | | | | | I hereby certify that the well location shown on this plat was plotted from field notes of actual surveys made by me or under my supervision, and that the same is true and correct to the best of my belief. | | | |
| | | | | | | | | 11-1-94 | | | |
| | | | | | | | | Date of Survey | | | |
| | | | | | | | | Signature and Seal of Professional Surveyor | | | |
| | | | | | | | | NEW MEXICO 9857 6857 | | | |
| | | | | | | | | Certificate Number | | | |

5297.16

OPERATIONS PLAN

Well Name: San Juan 29-7 Unit #83A
Location: 1055'FSL, 540'FEL Section 3, T-29-N, R-7-W
 Rio Arriba County, New Mexico
 Latitude: 36° 45' 03", Longitude 107° 33' 03"
Formation: Blanco Pictured Cliffs/Blanco Mesa Verde
Elevation: 6515'GL

| <u>Formation Tops:</u> | <u>Top</u> | <u>Bottom</u> | <u>Contents</u> |
|------------------------|--------------|---------------|-----------------|
| Surface | San Jose | 2432' | |
| Ojo Alamo | 2432' | 3113' | aquifer |
| Fruitland | 3113' | 3379' | gas |
| Pictured Cliffs | 3379' | 3442' | gas |
| Lewis | 3442' | 4122' | |
| Intermediate TD | 3692' | | |
| Mesa Verde | 4122' | 4902' | gas |
| Upper Cliff House | 4902' | 5112' | gas |
| Massive Cliff House | 5112' | 5203' | gas |
| Menefee | 5203' | 5564' | gas |
| Massive Point Lookout | 5564' | 5947' | gas |
| Mancos | 5947' | | |
| Total Depth | 6400' | | |

Logging Program:

Openhole Wireline Logging -
 Surface to Intermediate : DIL-GR, FDC-CNL & ML
 Intermediate TD to Total Depth : DIL-GR, FDC-CNL & Temp
 Mud Logs/Coring/DST -
 Mud logs - none
 Coring - none
 DST - none

Mud Program:

| <u>Interval</u> | <u>Type</u> | <u>Weight</u> | <u>Vis.</u> | <u>Fluid Loss</u> |
|-----------------|-------------|---------------|-------------|-------------------|
| 0- 200' | Spud | 8.4-8.9 | 40-50 | no control |
| 200-3692' | LSND | 8.4-9.1 | 30-60 | no control |
| 3692-6400' | Gas/Mist | n/a | n/a | n/a |

Pit levels will be visually monitored to detect gain or loss of fluid control.

Casing Program:

| <u>Hole Size</u> | <u>Depth Interval</u> | <u>Csg. Size</u> | <u>Wt.</u> | <u>Grade</u> |
|------------------|-----------------------|------------------|------------|--------------|
| 12 1/4" | 0' - 200' | 9 5/8" | 32.3# | H-40 |
| 8 3/4" | 0' - 3692' | 7" | 20.0# | K-55 |
| 6 1/4" | 3442' - 6400' | 4 1/2" | 10.5# | K-55 |

Tubing Program:

| | | | |
|------------|--------|-------|----------|
| 0' - 6400' | 2 3/8" | 4.7# | J-55 EUE |
| 0' - 3000' | 1 1/2" | 2.76# | J-55 IJ |

BOP Specifications, Wellhead and Tests:**Surface to Intermediate TD -**

11" 2000 psi minimum double gate BOP stack (Reference Figure #1). After nipple-up prior to drilling out surface casing, rams and casing will be tested to 600 psi for 30 minutes.

Intermediate TD to Total Depth -

11" 2000 psi minimum double gate BOP stack (Reference Figure #1). After nipple-up prior to drilling out intermediate casing, rams and casing will be tested to 1500 psi for 30 minutes.

Surface to Total Depth -

2" nominal, 2000 psi minimum choke manifold (Reference Figure #3).

Completion Operations -

6" 3000 psi double gate BOP stack (Reference Figure #2). After nipple-up prior to completion, pipe rams, casing and liner top will be tested to 3000 psi for 15 minutes.

Wellhead -

9 5/8" x 7" x 2 3/8" x 3000 psi tree assembly.

General -

- Pipe rams will be actuated once each day and blind rams will be actuated once each trip to test proper functioning.
- An upper kelly cock valve with handle available and drill string valves to fit each drill string will be available on the rig floors at all times.
- A BOP pit level drill will be conducted weekly for each drilling crew.
- All of the BOP tests and drills will be recorded in the daily drilling reports.
- Blind and pipe rams will be equipped with extension hand wheels.

Cementing:

9 5/8" surface casing - cement with 160 sx Class "B" cement with 1/4# flocele/sx and 3% calcium chloride (190 cu.ft. of slurry, 200% excess to circulate to surface). WOC 12 hrs. Test casing to 600 psi for 30 minutes.

Saw tooth guide shoe on bottom. Bowspring centralizers will be run in accordance with Onshore Order #2.

7" intermediate casing -

First stage - cement with 50 sx 65/35 Class "B" cement with 2% calcium chloride, 6% gel, and 1/4# flocele/sx. Tail w/100 sx Class "B" w/2% calcium chloride (170 cu.ft. of slurry, 80% excess to circulate stage tool @ 3063').

Second stage - lead w/503 sx of 65/35 Class "B" poz w/6% gel, 2% calcium chloride, and 1/4# flocele/sx. Tail w/25 sx Class "B" w/2% calcium chloride (920 cu.ft. of slurry, 100% excess to circulate to surface). WOC minimum of 12 hours before drilling out intermediate casing. If cement does not circulate to surface, a temperature log will be run after 8 hours to determine TOC. Test casing to 1500 psi for 30 minutes.

Cement nose guide shoe on bottom with float collar spaced on top of shoe joint. Two bowspring centralizers spaced every other joint off bottom, with 11 spaced every fourth joint to the base of the Ojo Alamo at 3113'. Two turbolating centralizers at the base of the Ojo Alamo at 3113'. Bowspring centralizers spaced every fourth joint from the base of the Ojo Alamo to the base of surface casing. A cementing stage tool will be run at 3063'.

4 1/2" Production Liner -

Cement to circulate liner top. Lead with 233 sx 65/35 Class "B" Poz with 6% gel, 2% calcium chloride, 3 pps gilsonite, 0.25 pps celloflake. Tail with 100 sx Class "B" with 1/4#/sx cellophane flakes (531 cu.ft., 75% excess to circulate liner top). WOC a minimum of 18 hrs prior to completing.

Cement nose guide shoe on bottom with float collar spaced on top of shoe joint. The liner hanger will have a rubber packoff.

- If hole conditions permit, an adequate water spacer will be pumped ahead of each cement job to prevent cement/ mud contamination or cement hydration.
- The pipe will be rotated and/or reciprocated, if hole conditions permit.

Special Drilling Operations (Gas/Mist Drilling):

The following equipment will be operational while gas/mist drilling:

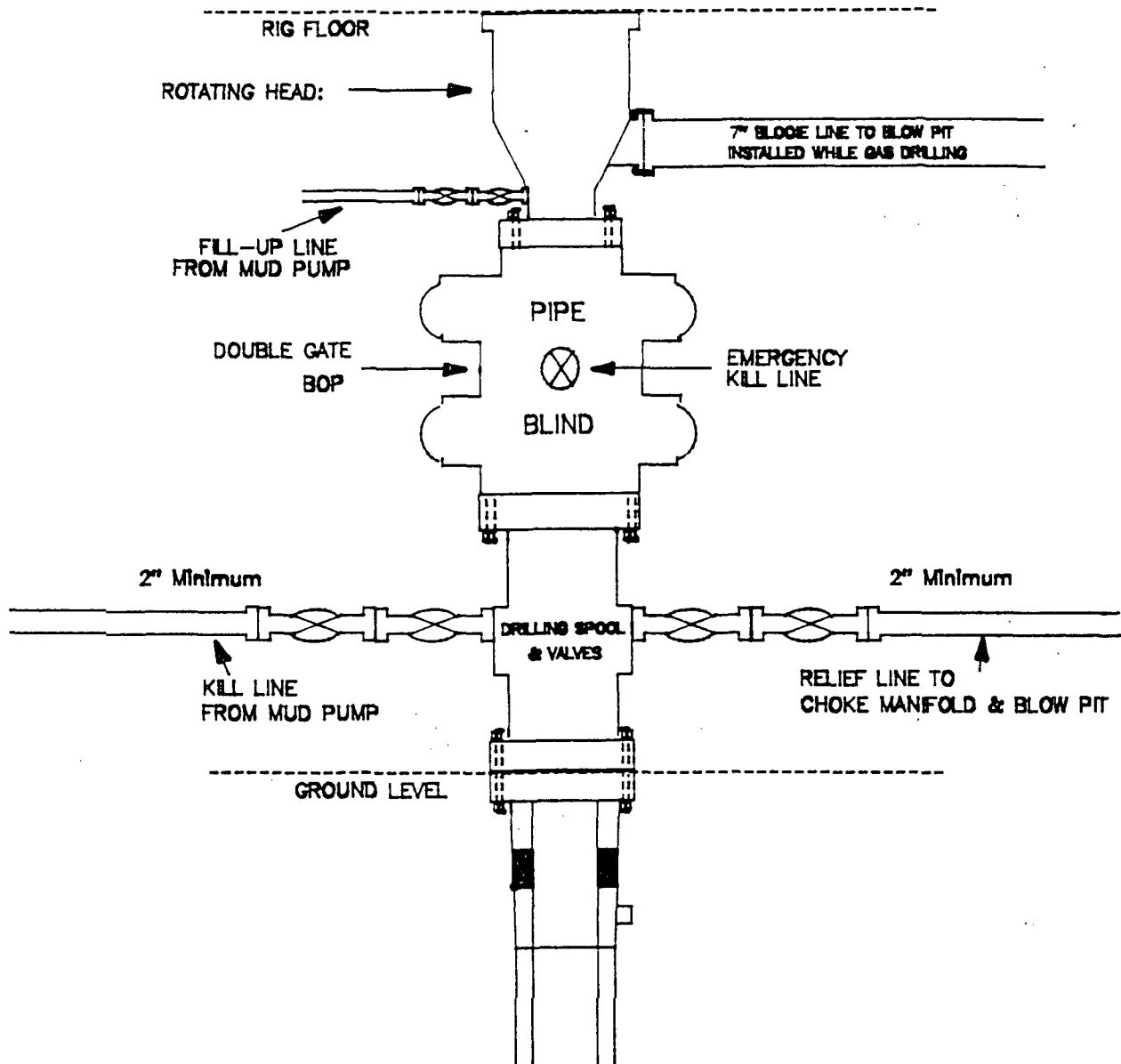
- An anchored blooie line will be utilized to discharge all cuttings and circulating medium to blow pit a minimum of 100' from wellhead.
- Blooie line will be equipped with automatic igniter or pilot light.
- Compressors will be located a minimum of 100' from the wellhead in the opposite direction from the blooie line.
- Engines will have spark arresters or water cooled exhaust.
- Deduster equipment will be utilized.
- The rotating head will be properly lubricated and maintained.
- A float valve will be utilized above the bit.
- Mud circulating equipment, water, and mud materials will be sufficient to maintain control of the well.

Additional Information:

- Pictured Cliffs and Mesa Verde formations will be dually completed.
- No abnormal temperatures or hazards are anticipated.
- Anticipated pore pressure for the Pictured Cliffs is 800 psi and the Mesa Verde is 1100 psi.
- Sufficient LCM will be added to the mud system to maintain well control, if lost circulation is encountered below the top of the Pictured Cliffs.
- The East half of Section 3 is dedicated to the Mesa Verde formation, and the Southeast quarter is dedicated to the Pictured Cliffs.
- This gas is dedicated.
- New casing will be utilized.
- Pipe movement (either rotation or reciprocation) will be done if hole conditions permit.

MERIDIAN OIL INC.

BOP Configuration 2M psi SYSTEM

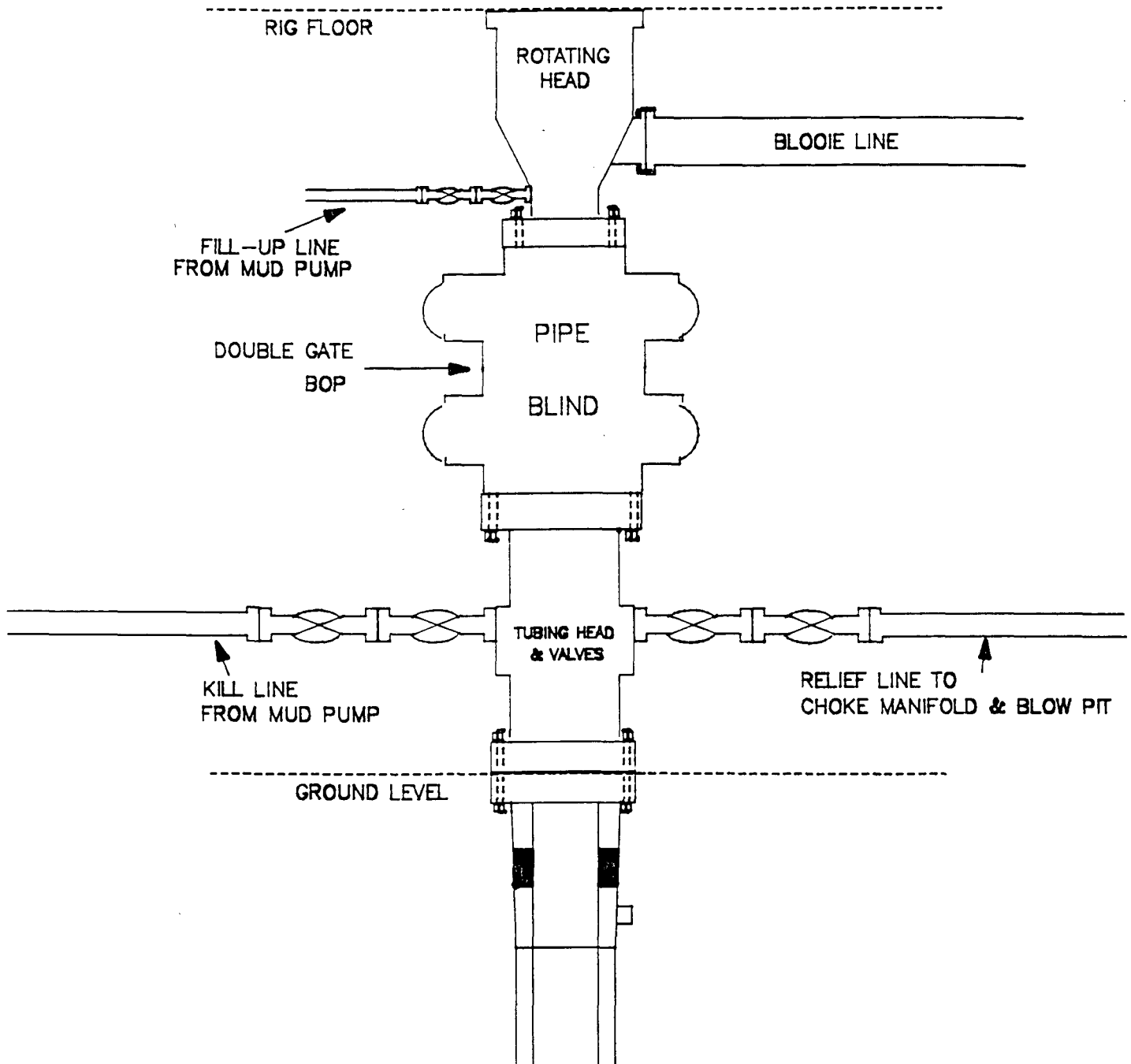


11" Bore, 2000psi minimum working pressure double gate BOP to be equipped with blind and pipe rams. A Schaffer Type 50 or equivalent rotating head to be installed on the top of the BOP. All equipment is 2000psi working pressure/or greater.

Figure #1

MERIDIAN OIL INC.

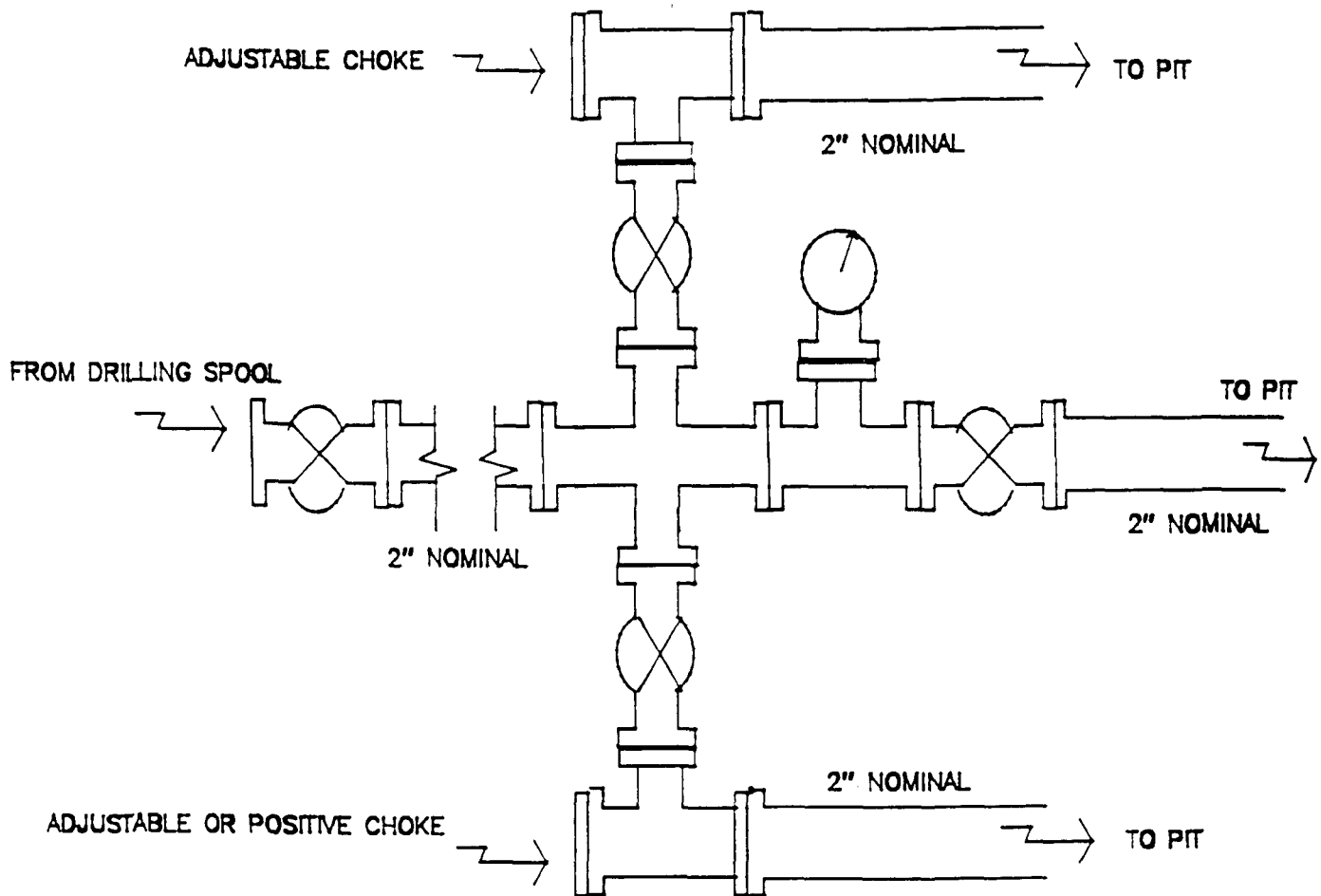
BOP Configuration
2M psi SYSTEM



Minimum BOP installation for Completion operations. 7 1/16" Bore (6" Nominal), 3000psi minimum working pressure double gate BOP to be equipped with blind and pipe rams.

Figure #2

MERIDIAN OIL INC.
Choke Manifold Configuration
2M psi SYSTEM



Minimum choke manifold installation from surface to Total Depth.
2" minimum, 2000psi working pressure equipment with two chokes.

Figure #3

MERIDIAN OIL
San Juan 29-7 Unit #83A
Multi-Point Surface Use Plan

1. Existing Roads - Refer to Map No. 1. Existing roads used to access the proposed location will be properly maintained for the duration of the project. Bureau of Land Management right-of-way has been applied for as shown on Map No. 1.
2. Planned Access Road - Refer to Map No. 1. None required.
3. Location of Existing Wells - Refer to Map No. 1A.
4. Location of Existing and/or Proposed Facilities if Well is Productive -
 - a. On the Well Pad - Refer to Plat No. 1, anticipated production facilities plat.
 - b. Off the Well Pad - Anticipated facilities off the well pad will be applied for as required.
5. Location and Type of Water Supply - Water will be hauled by truck for the proposed project and will be obtained from San Juan 29-6 Water Well #1 in located in SW/4 Section 28, T-29-N, R-6-W, New Mexico.
6. Source of Construction Materials - If construction materials are required for the proposed project, such materials will be obtained from a commercial quarry.
7. Methods of Handling Waste Materials - All garbage and trash materials will be removed from the site for proper disposal. A portable toilet will be provided for human waste and serviced in a proper manner. If liquids are left in the reserve pit after completion of the project, the pit will be fenced until the liquids have had adequate time to dry. The location clean-up will not take place until such time as the reserve pit can be properly covered over to prevent run-off from carrying waste materials into the watershed. All reserve pits will be lined with 12 mil bio-degradable plastic liner. All earthen pits will be so constructed as to prevent leakage from occurring; no earthen pit will be located on natural drainage. Generation of hazardous waste is not anticipated. Federal regulations will be adhered to regarding handling and disposal of such waste if so generated.
8. Ancillary Facilities - None anticipated.
9. Wellsite Layout - Refer to the location diagram and to the wellsite cut and fill diagram (Figure No. 4). The blow pit will be constructed with a 2'/160' grade to allow positive drainage to the reserve pit and prevent standing liquids in the blow pit.

10. Plans for Restoration of the Surface - After completion of the proposed project, the location will be cleaned and leveled. The location will be left in such a condition that will enable reseeding operations to be carried out. Seed mixture as designated by the responsible government agency will be used. The reseeding operations will be performed during the time period set forth by the responsible government agency. The permanent location facilities will be painted as designated by the responsible government agency.
11. Surface Ownership - Bureau of Land Management.
12. Other Information - Environmental stipulations as outlined by the responsible government agency will be adhered to. Refer to the archaeological report for a description of the topography, flora, fauna, soil characteristics, dwellings, historical and cultural sites.
13. Operator's Representative and Certification - Meridian Oil Regional Drilling Manager, Post Office Box 4289, Farmington, NM 87499, telephone (505) 326-9700. I hereby certify that I, or persons under my direct supervision, have inspected the proposed drill site and access route; that I am familiar with the conditions which presently exist; that the statements made in this plan, are to the best of my knowledge, true and correct; and that the work associated with the operations proposed herein will be performed by Meridian Oil Inc. and its contractors and subcontractors in conformity with this plan and the terms and conditions under which it is approved.



Regional Drilling Engineer

1/6/95
Date

JWC:pb

STATE
LANDS

NEW BLM
ROW

FEE
LANDS

NEW BLM
ROW

**MERIDIAN OIL INC
SAN JUAN 29-7 UNIT #83A**

T 29 N, R 7 W

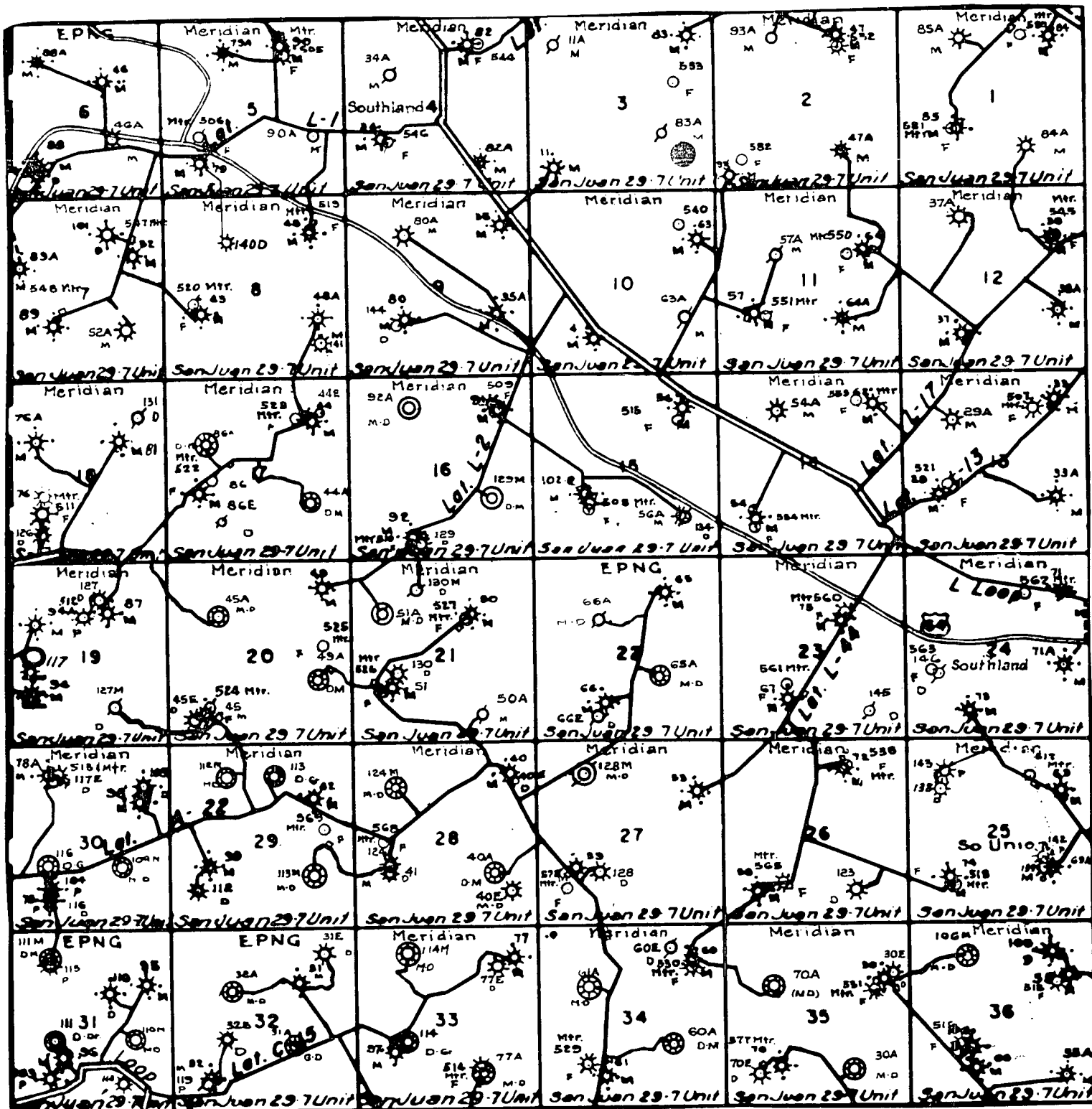
No New Construction

| | | |
|---------|----------|-------|
| Section | 3: SESE | 500' |
| | 11: E2NE | 3300' |
| | 12: SWNW | 300' |
| | 13: SWSW | 1700' |

APD MAP #1

FEE
LANDS

PETTUS 6783



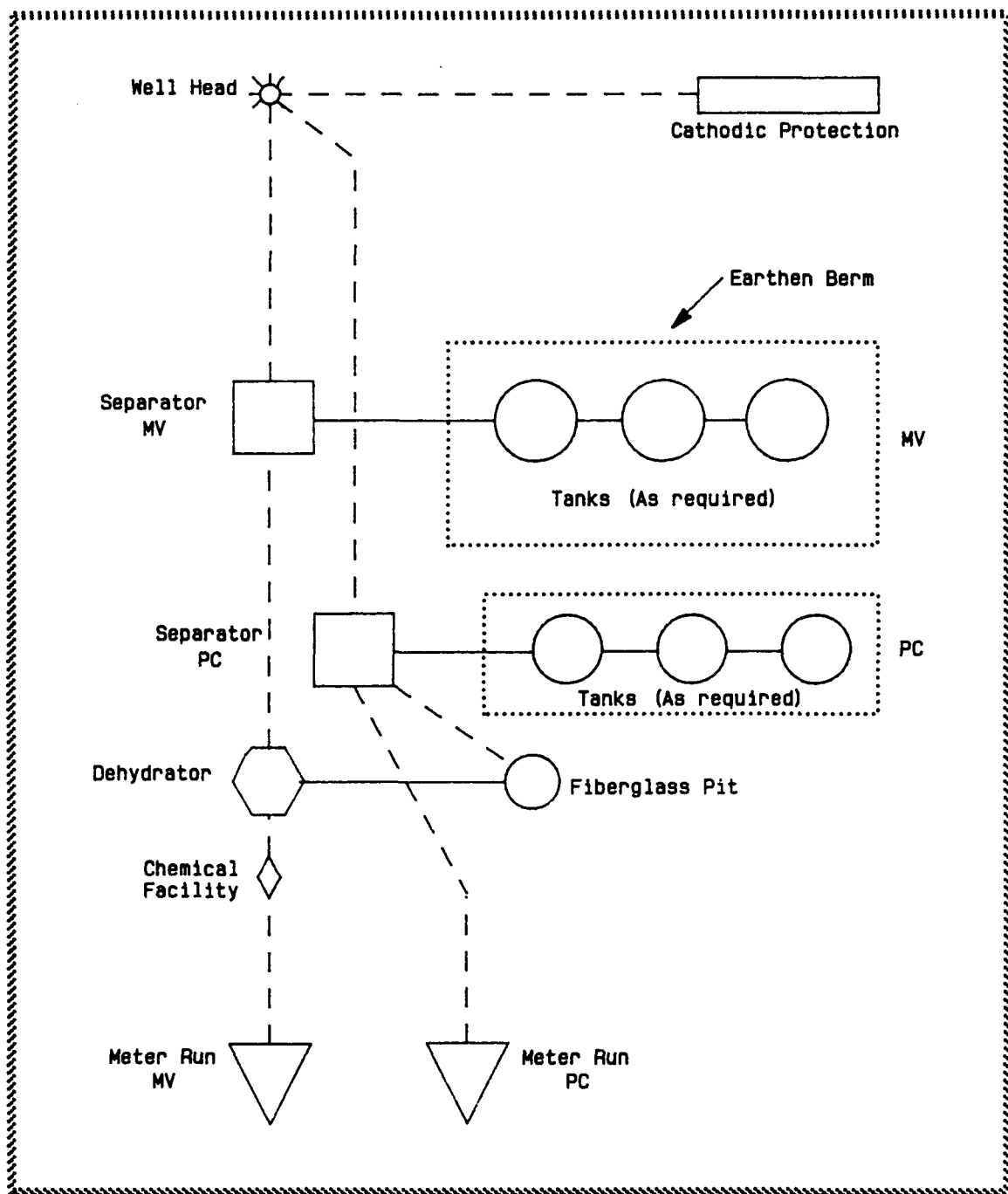
MERIDIAN OIL INC.
 Pipeline Map
 T-29-N, R-07-W
 San Juan County, New Mexico

San Juan 29-7 Unit #83A
 Map #1A

3/91 adw/mjb

MERIDIAN OIL INC.

Well Pad Boundary

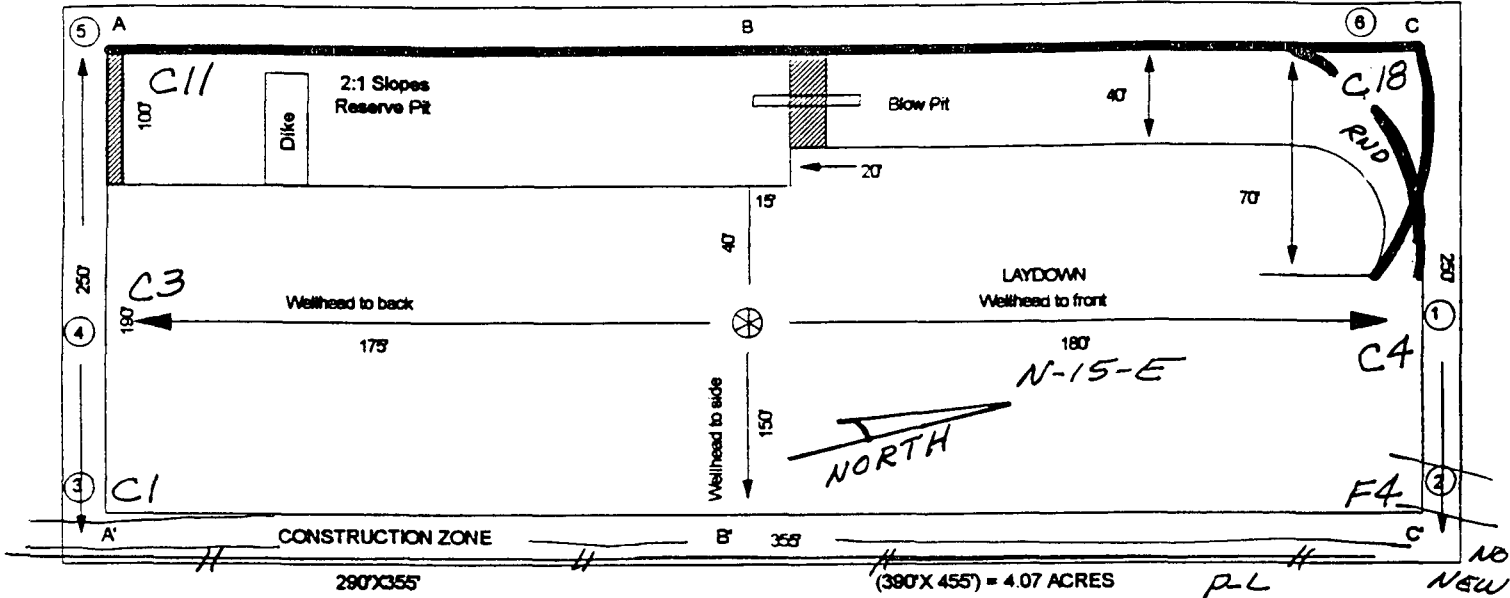


ANTICIPATED PRODUCTION FACILITIES
FOR A MESA VERDE/PICTURED CLIFFS
DUAL WELL

MERIDIAN OIL

PLAT #2
FC HIGH POTENTIAL
ALL MV / ALL DK

NAME: MOI San Juan 29-7 Unit 83A
FOOTAGE: 1055' FSL 540' FEL
SEC 3 TWN 29 N.R. 7 W NMPM
CO: Rio Arriba ST: New Mexico
ELEVATION: 6515' DATE: 11-1-94

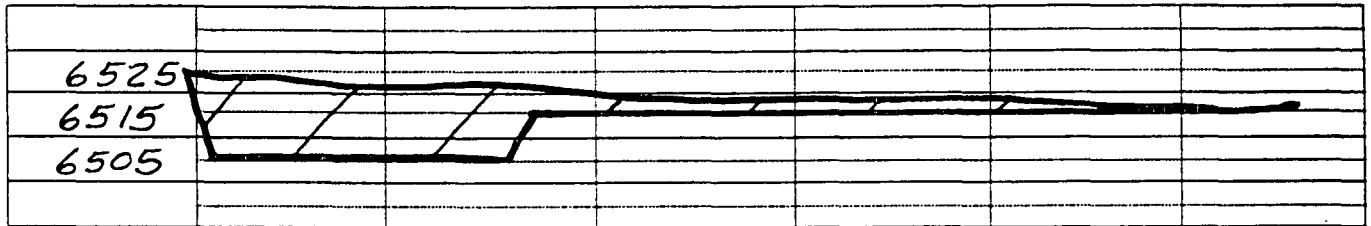


Reserve Pit Dike : to be 8' above Deep side; (overflow - 3' wide and 1' above shallow side.)

Blow Pit : overflow pipe halfway between top and bottom and extend over plastic liner and into blow pit.

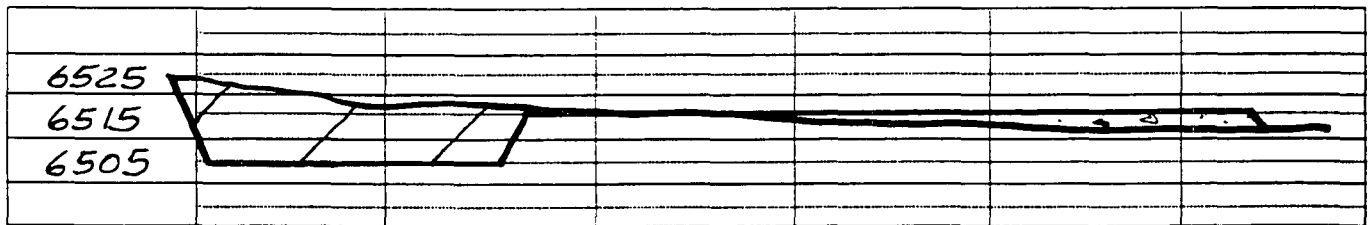
A-A'

C/L



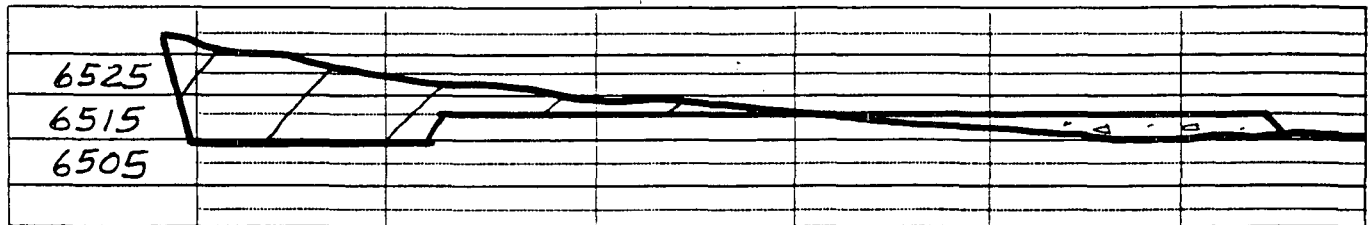
B-B'

C/L



C-C'

C/L



Note: Contractor should call One-Call for location of any marked or unmarked buried pipelines or cables on well pad and/or access road at least 2 working days prior to construction.

District I
PO Box 1988, Hobbs, NM 88241-1988
District II
PO Drawer DD, Artesia, NM 88211-0719
District III
1000 Rio Brazos Rd., Aztec, NM 87410
District IV
PO Box 2088, Santa Fe, NM 87504-2088

State of New Mexico
Energy, Minerals & Natural Resources Department

OIL CONSERVATION DIVISION
PO Box 2088
Santa Fe, NM 87504-2088

Form C-102
Revised February 21, 1994
Instructions on back
Submit to Appropriate District Office
State Lease - 4 Copies
Fee Lease - 3 Copies

☐ AMENDED REPORT

WELL LOCATION AND ACREAGE DEDICATION PLAT

| | | | | | |
|-------------------------|--|---------------------------------------|--|--|----------------------|
| 1 APT Number 30-039- | | 1 Pool Code 72359/72319 | | 1 Pool Name Blanco Pictured Cliffs/Blanco Mesaverde | |
| 4 Property Code 7465 | | 4 Property Name San Juan 29-7 Unit | | | 4 Well Number 83A |
| 1 OGRID No. 14538 | | 1 Operator Name Meridian Oil Inc. | | | 1 Elevation 6520' |

10 Surface Location

| | | | | | | | | | |
|--------------------|--------------|------------------|--------------|---------|----------------------|---------------------------|----------------------|------------------------|----------------|
| UL or lot no. P | Section 3 | Township 29 N | Range 7 W | Lot Ida | Feet from the 950 | North/South line South | Feet from the 595 | East/West line East | County R.A. |
|--------------------|--------------|------------------|--------------|---------|----------------------|---------------------------|----------------------|------------------------|----------------|

11 Bottom Hole Location If Different From Surface

| | | | | | | | | | |
|---------------|---------|----------|-------|---------|---------------|------------------|---------------|----------------|--------|
| UL or lot no. | Section | Township | Range | Lot Ida | Feet from the | North/South line | Feet from the | East/West line | County |
|---------------|---------|----------|-------|---------|---------------|------------------|---------------|----------------|--------|

| | | | |
|------------------------------------|--------------------|-----------------------|--------------|
| 12 Dedicated Acres E/318.05-160 | 13 Joint or Infill | 14 Consolidation Code | 15 Order No. |
|------------------------------------|--------------------|-----------------------|--------------|

NO ALLOWABLE WILL BE ASSIGNED TO THIS COMPLETION UNTIL ALL INTERESTS HAVE BEEN CONSOLIDATED
OR A NON-STANDARD UNIT HAS BEEN APPROVED BY THE DIVISION

| | | | |
|----------|----------|--|---|
| 16 | 5280.00' | 17 OPERATOR CERTIFICATION I hereby certify that the information contained herein is true and complete to the best of my knowledge and belief | |
| 8 | 7 | 6 | 5 |
| | | NMSF-078945 | |
| 5242.58' | 3 | NMSF-079514 | |
| | | 5242.64' | |
| | | 5297.16' | |
| | | 595' | |
| | | 950' | |
| | | 18 SURVEYOR CERTIFICATION I hereby certify that the well location shown on this plat was plotted from field notes of actual surveys made by me or under my supervision, and that the same is true and correct to the best of my belief. 3-13-95 Date of Survey Signature and Seal of Professional Surveyor: NEME C. EDWARDS 8837 6837 Certificate Number | |

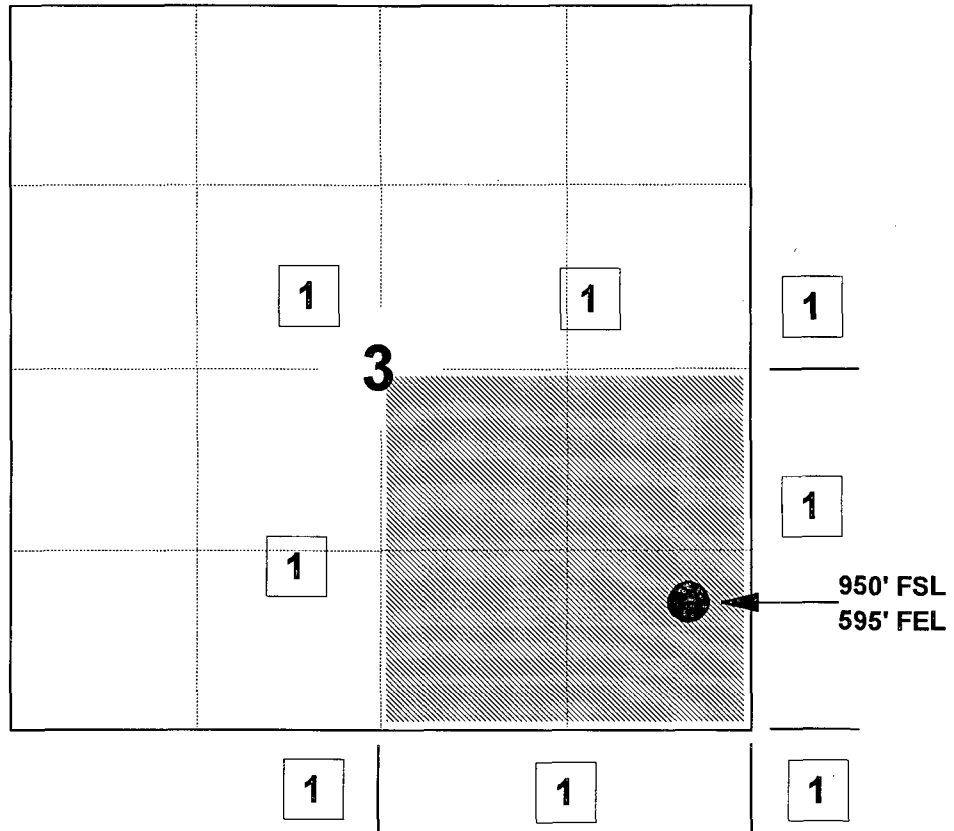
MERIDIAN OIL INC

SAN JUAN 29-7 UNIT #83A

OFFSET OPERATOR \ OWNER PLAT

Unorthodox Pictured Cliffs Well Location

Township 29 North, Range 7 West



1) Meridian Oil Inc.

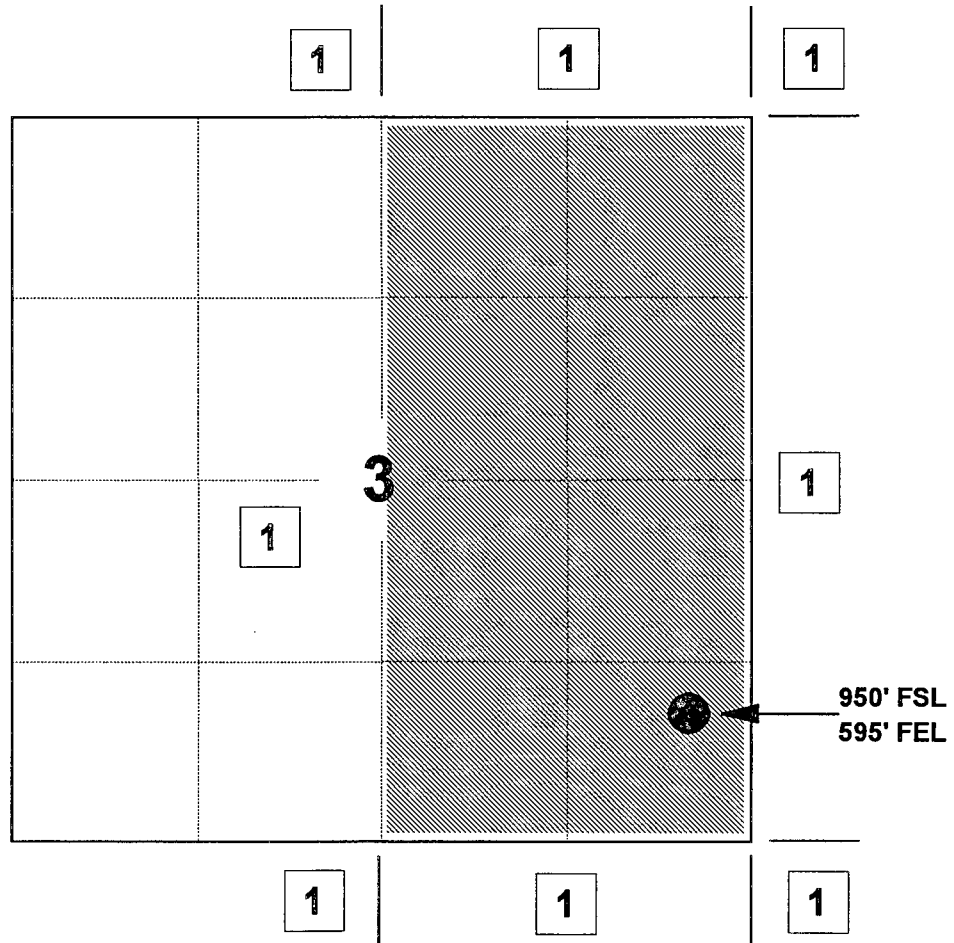
MERIDIAN OIL INC

SAN JUAN 29-7 UNIT #83A

OFFSET OPERATOR \ OWNER PLAT

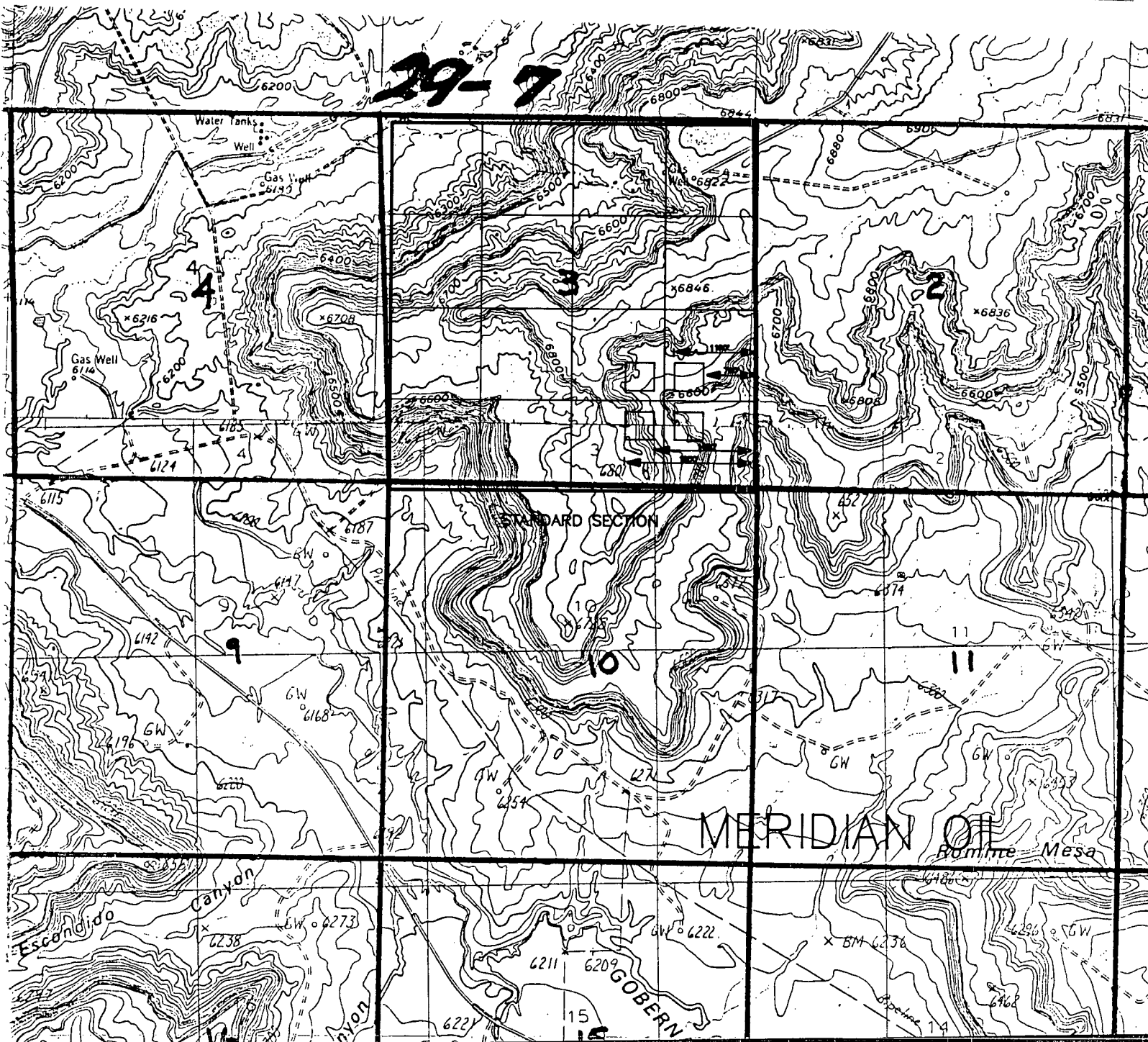
Unorthodox Mesaverde Well Location

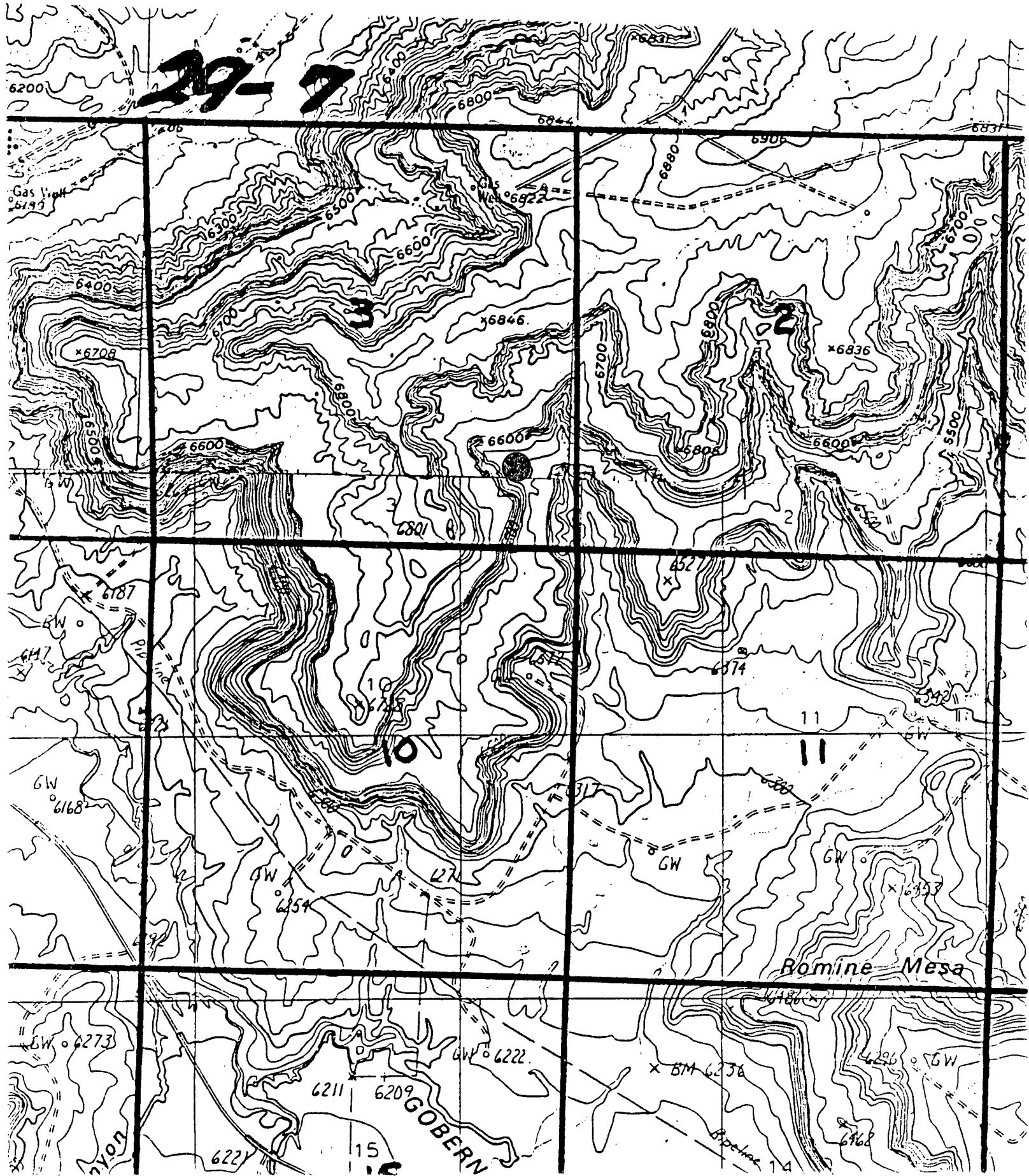
Township 29 North, Range 7 West



1) Meridian Oil Inc.

29-7





QUADRANGLE LOCATION