

June 18, 1996

Mr. Michael Stogner  
Oil Conservation Division  
P. O. Box 2088  
Santa Fe, NM 87501

Re: E. C. Hill "B" Federal Lease  
Lea County, New Mexico  
Lease No. NMLC 064118  
OGRID No. 017805  
Property No. 009280 - Pool No. 58300

Dear Mr. Stogner:

Plains Petroleum Operating Company respectfully requests administrative approval for Rule 104 "Unorthodox Well Locations" for the wells listed below. Plains is the leasehold owner of the E/2 of Section 34, T23S, R37E and the W/2 of Section 35, T24S, R37E, Lea County, New Mexico and is therefore the only operator affected by the positioning of these wellbores within each quarter-quarter section. No well is closer than the required 330 feet from the lease/section boundary. BLM Form 3160-3, Application to Drill, OCD Form C-102, Well Location and Acreage Plat along with a plat/exhibit of each well's location in relation to other wells on the lease are enclosed.

- 1) E. C. Hill "B" Federal #18, 1400' FNL & 2280' FEL, Sec. 34 (G) T23S, R37E
- 2) E. C. Hill "B" Federal #19, 2600' FSL & 2280' FEL, Sec. 34 (J) T23S, R37E
- 3) E. C. Hill "B" Federal #20, 1300' FSL & 2280' FEL, Sec. 34 (O) T23S, R37E
- 4) E. C. Hill "B" Federal #21, 2580' FNL & 900' FEL, Sec. 34 (H) T23S, R37E
- 5) E. C. Hill "B" Federal #22, 1220' FNL & 980' FEL, Sec. 34 (A) T23S, R37E

As per our conversation of June 18, 1996, your prompt consideration for each of the five (5) listed "unorthodox well locations" is respectfully requested. Should you require any further information, please contact the undersigned.

Respectfully submitted,  
PLAINS PETROLEUM OPERATING COMPANY

Stephen D. Owen  
Area Engineer

Enclosures

cc: Jerry Sexton - Hobbs OCD

# OPERATOR'S COPY

SUBMIT IN TRIPLICATE\*  
(Other instructions on  
reverse side)

Form approved.  
Budget Bureau No. 1004-0136  
Expires August 31, 1985

UNITED STATES  
DEPARTMENT OF THE INTERIOR  
BUREAU OF LAND MANAGEMENT

## APPLICATION FOR PERMIT TO DRILL, DEEPEN, OR PLUG BACK

1a. TYPE OF WORK

DRILL ☒

DEEPEN ☐

PLUG BACK ☐

b. TYPE OF WELL

OIL  
WELL ☒

GAS  
WELL ☐

OTHER

SINGLE  
ZONE ☒

MULTIPLE  
ZONE ☐

2. NAME OF OPERATOR

PLAINS PETROLEUM OPERATING COMPANY

3. ADDRESS OF OPERATOR

415 W. Wall, Suite 1000 Midland, TX 79701 Phone 915/683-4434

4. LOCATION OF WELL (Report location clearly and in accordance with any State requirements.)

At surface

Unit Letter G, 1400' FNL & 2280' FEL

At proposed prod. zone

UNORTHODOX LOCATION:

Approved to  
Drill

14. DISTANCE IN MILES AND DIRECTION FROM NEAREST TOWN OR POST OFFICE\*

10.3 Miles NE of Jal, NM

15. DISTANCE FROM PROPOSED\*

LOCATION TO NEAREST  
PROPERTY OR LEASE LINE, FT.  
(Also to nearest drlg. unit line, if any)

1400'

19. PROPOSED DEPTH  
TO NEAREST WELL, DRILLING, COMPLETED,  
OR APPLIED FOR, ON THIS LEASE, FT.

649'

16. NO. OF ACRES IN LEASE

520

17. NO. OF ACRES ASSIGNED  
TO THIS WELL

40

21. ELEVATIONS (Show whether DF, RT, GR, etc.)

GR 3275'

Captain Controlled Water Basin

22. APPROX. DATE WORK WILL START\*

Sept. 6, 1996

23. PROPOSED CASING AND CEMENTING PROGRAM

SIZE OF HOLE	SIZE OF CASING	WEIGHT PER FOOT	SETTING DEPTH	QUANTITY OF CEMENT
12-1/4"	8-5/8"	24# J-55	1175'	350 sx circ
7-7/8"	5-1/2"	15.5# K-55	5850'	1645 sx Circ

Propose to drill the well through the Blinebry and complete as a Blinebry producer.

Mud Program

0' - 1175' Spud Mud, FW, Gel  
1175' - 5850' Brine & native mud, MW 10 - 10.2 ppg  
Vis 26 - 28, SW gel for logs

BOP

A 3000 psi Shaffer double hydraulic operated will be used and  
tested at installation, drill out and each time they are removed  
or rearranged. BOP used as a two-mud-system.

Approved Subject to  
General Requirements and  
Special Regulations  
Attached

IN ABOVE SPACE DESCRIBE PROPOSED PROGRAM: If proposal is to deepen or plug back, give data on present productive zone and proposed new productive zone. If proposal is to drill or deepen directionally, give pertinent data on subsurface locations and measured and true vertical depths. Give blowout preventer program, if any.

SIGNED Stephen D. Owen Stephen D. Owen

TITLE Petroleum Engineer

DATE May 8, 1996

(This space for Federal or State office use)

PERMIT NO.

APPROVAL DATE

APPROVED BY

TITLE

DATE

CONDITIONS OF APPROVAL, IF ANY:

\*See Instructions On Reverse Side

Title 18 U.S.C. Section 1001, makes it a crime for any person knowingly and willfully to make to any department or agency of the United States any false, fictitious or fraudulent statements or representations as to any matter within its jurisdiction.

DISTRICT I  
P. O. Box 1980  
Hobbs, NM 88241-1980

State of New Mexico  
Energy, Minerals, and Natural Resources Department

Form C-102  
Revised 02-10-94

Instructions on back

DISTRICT II  
P. O. Drawer DD  
Artesia, NM 88211-0719

OIL CONSERVATION DIVISION

P. O. Box 2088  
Santa Fe, New Mexico 87504-2088

Submit to the Appropriate  
District Office  
State Lease - 4 copies  
Fee Lease - 3 copies

☐ AMENDED REPORT

DISTRICT III  
1000 Rio Brazos Rd.  
Aztec, NM 87410

DISTRICT IV  
P. O. Box 2088  
Santa Fe, NM 87507-2088

WELL LOCATION AND ACREAGE DEDICATION PLAT

1 API Number		2 Pool Code 58300		3 Pool Name TEAGUE BLINEBRY	
4 Property Code 58300 009280		5 Property Name E. C. HILL 'B' FEDERAL			6 Well Number 18
7 OGRID No. 017805		8 Operator Name PLAINS PETROLEUM OPERATING COMPANY			9 Elevation 3275'

10 SURFACE LOCATION

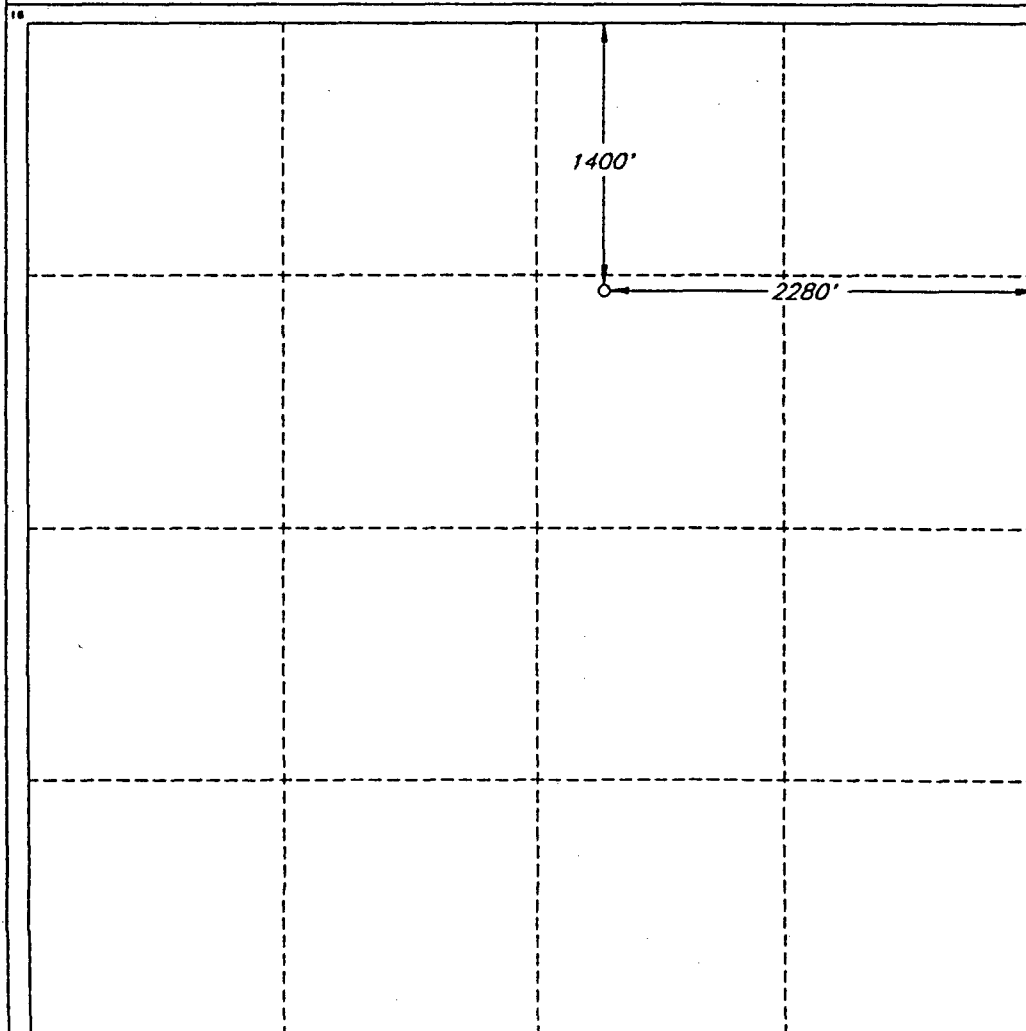
UL or lot no. G	Section 34	Township 23 SOUTH	Range 37 EAST, N.M.P.M.	Lot Ida	Feet from the 1400'	North/South line NORTH	Feet from the 2280'	East/West line EAST	County LEA
--------------------	---------------	----------------------	----------------------------	---------	------------------------	---------------------------	------------------------	------------------------	---------------

"BOTTOM HOLE LOCATION IF DIFFERENT FROM SURFACE

UL or lot no.	Section	Township	Range	Lot Ida	Feet from the	North/South line	Feet from the	East/West line	County
---------------	---------	----------	-------	---------	---------------	------------------	---------------	----------------	--------

12 Dedicated Acres	13 Joint or Infill	14 Consolidation Code	15 Order No.
--------------------	--------------------	-----------------------	--------------

NO ALLOWABLE WELL BE ASSIGNED TO THIS COMPLETION UNTIL ALL INTERESTS HAVE BEEN  
CONSOLIDATED OR A NON-STANDARD UNIT HAS BEEN APPROVED BY THE DIVISION



OPERATOR CERTIFICATION

I hereby certify that the information  
contained herein is true and complete  
to the best of my knowledge and belief.

Signature

*Stephen D. Owen*

Printed Name

Stephen D. Owen

Title

Area Engineer

Date

May 8, 1996

SURVEYOR CERTIFICATION

I hereby certify that the well  
location shown on this plat was  
plotted from field notes of actual  
surveys made by me or under  
my supervision, and that the  
same is true and correct to the  
best of my belief.

Date of Survey

APRIL 29, 1996

Signature and Seal of  
Professional Surveyor

STATE OF NEW MEXICO  
V. LYNN  
BEZNER  
NO. 7920  
V. L. BEZNER  
JULY 21, 1995  
JOB #45185-56-45 SW / JSJ

# OPERATOR'S COPY

Form 3160-3  
(November 1983)  
(formerly 9-331C)

SUBMIT IN TRIPLICATE\*  
(Other instructions on  
reverse side)

Form approved.  
Budget Bureau No. 1004-0136  
Expires August 31, 1985

## UNITED STATES DEPARTMENT OF THE INTERIOR BUREAU OF LAND MANAGEMENT

5. LEASE DESIGNATION AND SERIAL NO.

NMLC 064118

6. IF INDIAN, ALLOTTEE OR TRIBE NAME

7. UNIT AGREEMENT NAME

8. FARM OR LEASE NAME

E. C. HILL "B" FEDERAL

9. WELL NO.

19

10. FIELD AND POOL OR WILDCAT

TEAGUE BLINEBRY

11. SEC. T., S., W., OR SW. AND SURVEY OR AREA

Sec. 34 T23S, R37E

12. COUNTY OR PARISH 13. STATE

LEA

NM

### APPLICATION FOR PERMIT TO DRILL, DEEPEN, OR PLUG BACK

1a. TYPE OF WORK

DRILL ☒

DEEPEN ☐

PLUG BACK ☐

b. TYPE OF WELL

OIL WELL ☒

GAS WELL ☐

OTHER

SINGLE ZONE ☒

MULTIPLE ZONE ☐

2. NAME OF OPERATOR

PLAINS PETROLEUM OPERATING COMPANY

3. ADDRESS OF OPERATOR

415 W. Wall, Suite 1000

Midland, TX 79701

Phone

915/683-4434

4. LOCATION OF WELL (Report location clearly and in accordance with any State requirements.)

At surface

Unit Letter J, 2600' FSL & 2280' FEL

Subject to  
Like Approval  
By State

At proposed prod. zone

UNORTHODOX LOCATION:

14. DISTANCE IN MILES AND DIRECTION FROM NEAREST TOWN OR POST OFFICE\*

10.3 Miles NE of Jal, NM

15. DISTANCE FROM PROPOSED\*

LOCATION TO NEAREST  
PROPERTY OR LEASE LINE, FT.  
(Also to nearest drlg. unit line, if any)

2280'

16. NO. OF ACRES IN LEASE

520

17. NO. OF ACRES ASSIGNED  
TO THIS WELL

40

18. DISTANCE FROM PROPOSED LOCATION\*

TO NEAREST WELL, DRILLING, COMPLETED,  
OR APPLIED FOR, ON THIS LEASE, FT.

576'

19. PROPOSED DEPTH

5850'

20. ROTARY OR CABLE TOOLS

Rotary

21. ELEVATIONS (Show whether DF, RT, GR, etc.)

GR 3274'

Carbon Controlled Water Basin

22. APPROX. DATE WORK WILL START\*

July 8, 1996

### 23. PROPOSED CASING AND CEMENTING PROGRAM

SIZE OF HOLE	SIZE OF CASING	WEIGHT PER FOOT	SETTING DEPTH	QUANTITY OF CEMENT
12-1/4"	8-5/8"	24# J-55	1175'	350 sx circ
7-7/8"	5-1/2"	15.5# K-55	5850'	1645 sx Circ

Propose to drill the well through the Blinebry and complete as a Blinebry producer.

Mud Program

0' - 1175' Spud Mud, FW, Gel  
1175' - 5850' Brine & native mud, MW 10 - 10.2 ppg  
Vis 26 - 28, SW gel for logs

BOP

A 3000 psi Shaffer double hydraulic operated will be used and tested at installation, drill out and each time they are removed or rearranged. BOP used as a two-mud-system.

Approval Subject to  
General Requirements and  
Special Conditions  
Attached

IN ABOVE SPACE DESCRIBE PROPOSED PROGRAM: If proposal is to deepen or plug back, give data on present productive zone and proposed new productive zone. If proposal is to drill or deepen directionally, give pertinent data on subsurface locations and measured and true vertical depths. Give blowout preventer program, if any.

24.

SIGNED Stephen D. Owen Stephen D. Owen

TITLE Petroleum Engineer

DATE May 8, 1996

(This space for Federal or State office use)

PERMIT NO.

APPROVAL DATE

APPROVED BY

TITLE

DATE

CONDITIONS OF APPROVAL, IF ANY:

\*See Instructions On Reverse Side

Title 18 U.S.C. Section 1001, makes it a crime for any person knowingly and willfully to make to any department or agency of the United States any false, fictitious or fraudulent statements or representations as to any matter within its jurisdiction.

DISTRICT I  
P. O. Box 1980  
Hobbs, NM 88241-1980

State of New Mexico  
Energy, Minerals, and Natural Resources Department

Form C-102  
Revised 02-10-94  
Instructions on back

DISTRICT II  
P. O. Drawer DD  
Artesia, NM 88211-0719

OIL CONSERVATION DIVISION

P. O. Box 2088  
Santa Fe, New Mexico 87504-2088

Submit to the Appropriate  
District Office  
State Lease - 4 copies  
Fee Lease - 3 copies

☐ AMENDED REPORT

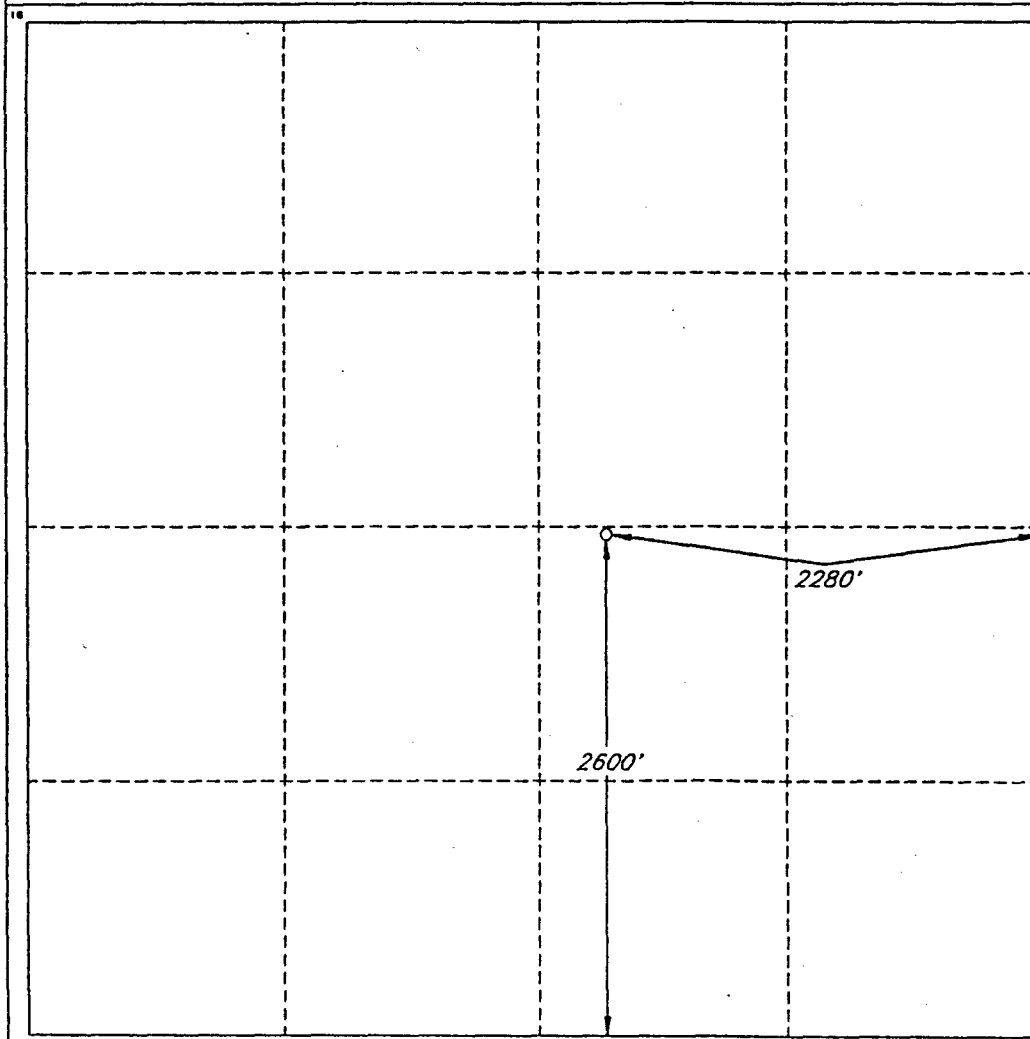
DISTRICT III  
1000 Rio Brazos Rd.  
Aztec, NM 87410

DISTRICT IV  
P. O. Box 2088  
Santa Fe, NM 87507-2088

WELL LOCATION AND ACREAGE DEDICATION PLAT

1 API Number		2 Pool Code 58300		3 Pool Name TEAGUE BLINEBRY					
4 Property Code 58300 009280		5 Property Name E. C. HILL 'B' FEDERAL						6 Well Number 19	
7 OGRID No. 017805		8 Operator Name PLAINS PETROLEUM OPERATING COMPANY						9 Elevation 3274'	
10 SURFACE LOCATION									
UL or lot no. J	Section 34	Township 23 SOUTH	Range 37 EAST, N.M.P.M.	Lot Ida	Feet from the 2600'	North/South line SOUTH	Feet from the 2280'	East/West line EAST	County LEA
11 BOTTOM HOLE LOCATION IF DIFFERENT FROM SURFACE									
UL or lot no.	Section	Township	Range	Lot Ida	Feet from the	North/South line	Feet from the	East/West line	County
12 Dedicated Acres		13 Joint or Infill		14 Consolidation Code		15 Order No.			

NO ALLOWABLE WELL BE ASSIGNED TO THIS COMPLETION UNTIL ALL INTERESTS HAVE BEEN  
CONSOLIDATED OR A NON-STANDARD UNIT HAS BEEN APPROVED BY THE DIVISION



OPERATOR CERTIFICATION

I hereby certify that the information  
contained herein is true and complete  
to the best of my knowledge and belief.

Signature

*Stephen D. Owen*

Printed Name

Stephen D. Owen

Title

Area Engineer

Date

May 8, 1996

SURVEYOR CERTIFICATION

I hereby certify that the well  
location shown on this plat was  
plotted from field notes of actual  
surveys made by me or under  
my supervision, and that the  
same is true and correct to the  
best of my belief.

Date of Survey

APRIL 30, 1996

Signature and Seal of  
Professional

*V. Lynn Bezner*  
V. LYNN  
BEZNER  
NO. 7920  
Certified No.  
V. L. BEZNER AND S.P. #7920  
JOB #45226 SW / V.H.B.

# OPERATOR'S COPY

SUBMIT IN TRIPLICATE\*  
(Other instructions on  
reverse side)

Form approved.  
Budget Bureau No. 1004-0136  
Expires August 31, 1985

UNITED STATES  
DEPARTMENT OF THE INTERIOR  
BUREAU OF LAND MANAGEMENT

## APPLICATION FOR PERMIT TO DRILL, DEEPEN, OR PLUG BACK

1a. TYPE OF WORK

DRILL ☒

DEEPEN ☐

PLUG BACK ☐

b. TYPE OF WELL

OIL  
WELL ☒

GAS  
WELL ☐

OTHER

SINGLE  
ZONE ☒

MULTIPLE  
ZONE ☐

2. NAME OF OPERATOR

PLAINS PETROLEUM OPERATING COMPANY

3. ADDRESS OF OPERATOR

415 W. Wall, Suite 1000

Midland, TX 79701 915/683-4434

Phone

4. LOCATION OF WELL (Report location clearly and in accordance with any State requirements.)

At surface

Unit Letter O, 1300' FSL & 2280' FEL

At proposed prod. zone

UNORTHODOX

Subject to

LOCATION:

Like Approval

14. DISTANCE IN MILES AND DIRECTION FROM NEAREST TOWN OR POST OFFICE\*

10.3 Miles NE of Jal, NM

15. DISTANCE FROM PROPOSED\*

LOCATION TO NEAREST  
PROPERTY OR LEASE LINE, FT.  
(Also to nearest drlg. unit line, if any)

1300'

16. NO. OF ACRES IN LEASE

520

17. NO. OF ACRES ASSIGNED  
TO THIS WELL

40

19. DISTANCE FROM PROPOSED LOCATION\*

TO NEAREST WELL, DRILLING, COMPLETED,  
OR APPLIED FOR, ON THIS LEASE, FT.

540'

19. PROPOSED DEPTH

5850'

20. ROTARY OR CABLE TOOLS

Rotary

21. ELEVATIONS (Show whether DF, RT, GR, etc.)

GR 3261'

Capitan Controlled Water Basin

22. APPROX. DATE WORK WILL START\*

August 7, 1996

23. PROPOSED CASING AND CEMENTING PROGRAM

SIZE OF HOLE	SIZE OF CASING	WEIGHT PER FOOT	SETTING DEPTH	QUANTITY OF CEMENT
12-1/4"	8-5/8"	24# J-55	1175'	350 sx circ
7-7/8"	5-1/2"	15.5# K-55	5850'	1645 sx Circ

Propose to drill the well through the Blinebry and complete as a Blinebry producer.

Mud Program

0' - 1175' Spud Mud, FW, Gel

1175' - 5850' Brine & native mud, MW 10 - 10.2 ppg

Vis 26 - 28, SW gel for logs

BOP

A 3000 psi Shaffer double hydraulic operated will be used and tested at installation, drill out and each time they are removed or rearranged. BOP used as a two-mud-system.

Approval Subject to  
General Requirements and  
Special Computations  
Attached

IN ABOVE SPACE DESCRIBE PROPOSED PROGRAM: If proposal is to deepen or plug back, give data on present productive zone and proposed new productive zone. If proposal is to drill or deepen directionally, give pertinent data on subsurface locations and measured and true vertical depths. Give blowout preventer program, if any.

24.

SIGNED Stephen D. Owen Stephen D. Owen

TITLE Petroleum Engineer

DATE May 8, 1996

(This space for Federal or State office use)

PERMIT NO.

APPROVAL DATE

APPROVED BY

TITLE

DATE

CONDITIONS OF APPROVAL, IF ANY:

Area Manager

6/10/96

\*See Instructions On Reverse Side

DISTRICT I  
P. O. Box 1980  
Hobbs, NM 88241-1980

State of New Mexico  
Energy, Minerals, and Natural Resources Department

Form C-102  
Revised 02-10-94

Instructions on back

DISTRICT II  
P. O. Drawer DD  
Artesia, NM 88211-0719

OIL CONSERVATION DIVISION

P. O. Box 2088  
Santa Fe, New Mexico 87504-2088

Submit to the Appropriate  
District Office  
State Lease - 4 copies  
Fee Lease - 3 copies

DISTRICT III  
1000 Rio Brazos Rd.  
Aztec, NM 87410

☐ AMENDED REPORT

DISTRICT IV  
P. O. Box 2088  
Santa Fe, NM 87507-2088

WELL LOCATION AND ACREAGE DEDICATION PLAT

1 API Number		2 Pool Code 58300		3 Pool Name TEAGUE BLINEBRY			
4 Property Code 58300 009280		5 Property Name E. C. HILL 'B' FEDERAL				6 Well Number 20	
7 OGRID No. 017805		8 Operator Name PLAINS PETROLEUM OPERATING COMPANY				9 Elevation 3261'	

10 SURFACE LOCATION

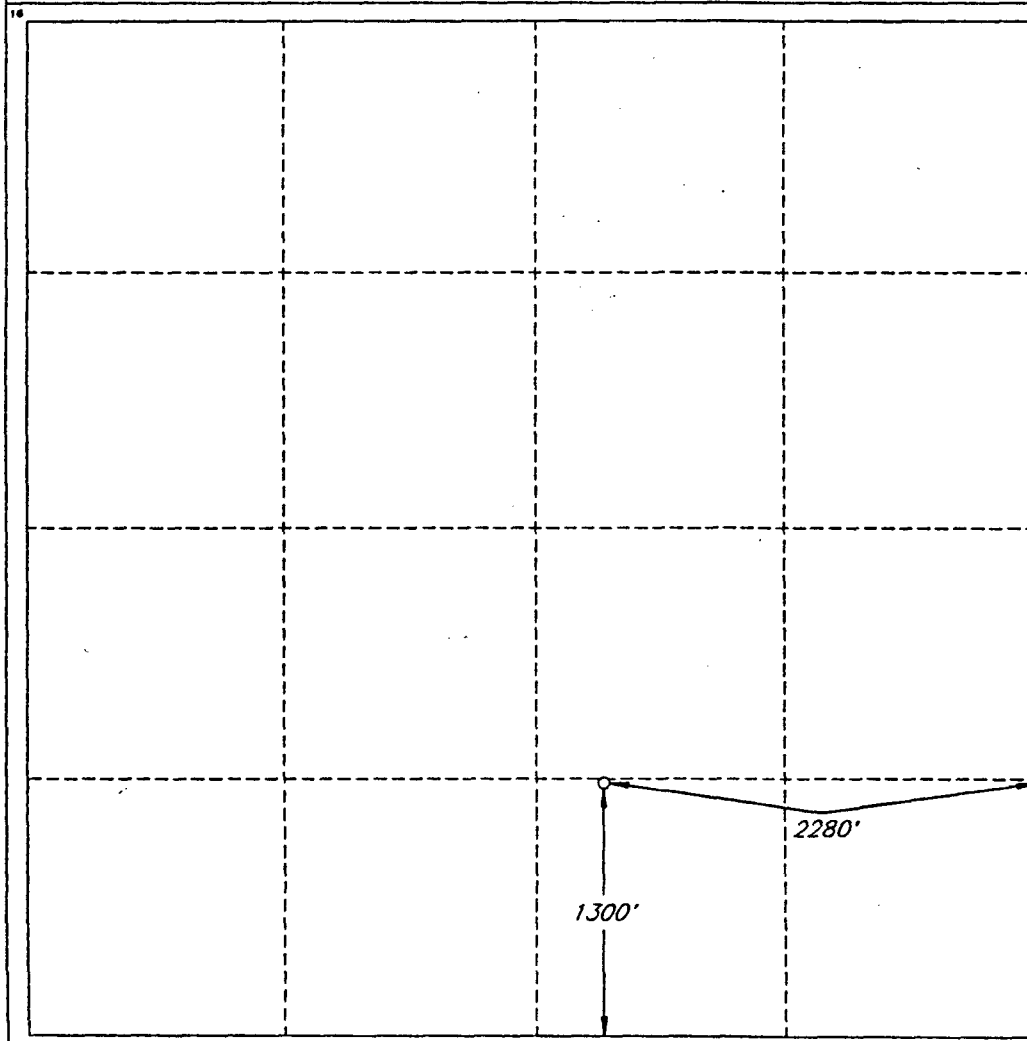
UL or lot no. 0	Section 34	Township 23 SOUTH	Range 37 EAST, N.M.P.M.	Lot Ida	Feet from the 1300'	North/South line SOUTH	Feet from the 2280'	East/West line EAST	County LEA
--------------------	---------------	----------------------	----------------------------	---------	------------------------	---------------------------	------------------------	------------------------	---------------

"BOTTOM HOLE LOCATION IF DIFFERENT FROM SURFACE

UL or lot no.	Section	Township	Range	Lot Ida	Feet from the	North/South line	Feet from the	East/West line	County
---------------	---------	----------	-------	---------	---------------	------------------	---------------	----------------	--------

12 Dedicated Acres	13 Joint or Infill	14 Consolidation Code	15 Order No.
--------------------	--------------------	-----------------------	--------------

NO ALLOWABLE WELL BE ASSIGNED TO THIS COMPLETION UNTIL ALL INTERESTS HAVE BEEN  
CONSOLIDATED OR A NON-STANDARD UNIT HAS BEEN APPROVED BY THE DIVISION



OPERATOR CERTIFICATION

I hereby certify that the information  
contained herein is true and complete  
to the best of my knowledge and belief.

Signature

Stephen D. Owen

Printed Name

Stephen D. Owen

Title

Area Engineer

Date

May 8, 1996

SURVEYOR CERTIFICATION

I hereby certify that the well  
location shown on this plat was  
plotted from field notes of actual  
surveys made by me or under  
my supervision, and that the  
same is true and correct to the  
best of my belief.

Date of Survey

APRIL 30, 1996

Signature and Seal of  
Professional Surveyor

STATE OF NEW MEXICO  
V. LYNN  
BEZNER  
NO. 7920  
Certification No.  
V. LYNN BEZNER  
#7920  
JOB #4528 LAND 4528 SW / V.H.B.

# OPERATOR'S COPY

Form 3160-3  
(November 1983)  
(formerly 9-331C)

SUBMIT IN TRIPLICATE\*  
(Other instructions on  
reverse side)

Form approved.  
Budget Bureau No. 1004-0136  
Expires August 31, 1985

## UNITED STATES DEPARTMENT OF THE INTERIOR BUREAU OF LAND MANAGEMENT

### APPLICATION FOR PERMIT TO DRILL, DEEPEN, OR PLUG BACK

1a. TYPE OF WORK

DRILL ☒

DEEPEN ☐

PLUG BACK ☐

b. TYPE OF WELL

OIL  
WELL ☒

GAS  
WELL ☐

OTHER

SINGLE  
ZONE ☒

MULTIPLE  
ZONE ☐

2. NAME OF OPERATOR

PLAINS PETROLEUM OPERATING COMPANY

3. ADDRESS OF OPERATOR

415 W. Wall, Suite 1000 Midland, TX 79701 Phone 915/683-4434

4. LOCATION OF WELL (Report location clearly and in accordance with any State requirements.)

At surface

Unit Letter H 2580' FNL & 900' FEL

At proposed prod. zone

UNORTHODOX LOCATION:

Like Approved  
By State

14. DISTANCE IN MILES AND DIRECTION FROM NEAREST TOWN OR POST OFFICE\*

10.3 Miles NE of Jal, NM

15. DISTANCE FROM PROPOSED\*

LOCATION TO NEAREST  
PROPERTY OR LEASE LINE, FT. 900'  
(Also to nearest drig. unit line, if any)

15. DISTANCE FROM PROPOSED LOCATION\*

TO NEAREST WELL, DRILLING, COMPLETED,  
OR APPLIED FOR, ON THIS LEASE, FT. 606'

16. NO. OF ACRES IN LEASE

520

17. NO. OF ACRES ASSIGNED

40

19. PROPOSED DEPTH

5850'

20. ROTARY OR CABLE TOOLS

Rotary

21. ELEVATIONS (Show whether DF, RT, GR, etc.)

GR 3271'

Captain Controlled Water Basin

22. APPROX. DATE WORK WILL START\*

October 3, 1996

23.

#### PROPOSED CASING AND CEMENTING PROGRAM

SIZE OF HOLE	SIZE OF CASING	WEIGHT PER FOOT	SETTING DEPTH	QUANTITY OF CEMENT
12-1/4"	8-5/8"	24# J-55	1175'	350 sx circ
7-7/8"	5-1/2"	15.5# K-55	5850'	1645 sx Circ

Propose to drill the well through the Blinebry and complete as a Blinebry producer.

#### Mud Program

0' - 1175' Spud Mud, FW, Gel  
1175' - 5850' Brine & native mud, MW 10 - 10.2 ppg  
Vis 26 - 28, SW gel for logs

#### BOP

A 3000 psi Shaffer double hydraulic operated will be used and tested at installation, drill out and each time they are removed or rearranged. BOP used as a two-mud-system.

Approval Subject to  
General Requirements and  
Special stipulations  
Attached

IN ABOVE SPACE DESCRIBE PROPOSED PROGRAM: If proposal is to deepen or plug back, give data on present productive zone and proposed new productive zone. If proposal is to drill or deepen directionally, give pertinent data on subsurface locations and measured and true vertical depths. Give blowout preventer program, if any.

24.

SIGNED Stephen D. Owen

TITLE Petroleum Engineer

DATE May 8, 1996

(This space for Federal or State office use)

PERMIT NO.

APPROVAL DATE

APPROVED BY

TITLE

DATE

CONDITIONS OF APPROVAL, IF ANY:

\*See Instructions On Reverse Side

Title 18 U.S.C. Section 1001, makes it a crime for any person knowingly and willfully to make to any department or agency of the United States any false, fictitious or fraudulent statements or representations as to any matter within its jurisdiction.



Instructions on back

DISTRICT II  
P. O. Drawer DD  
Artesia, NM 88211-0719

## OIL CONSERVATION DIVISION

DISTRICT III  
1000 Rio Brazos Rd.  
Aztec, NM 87410

P. O. Box 2088  
Santa Fe, New Mexico 87504-2088

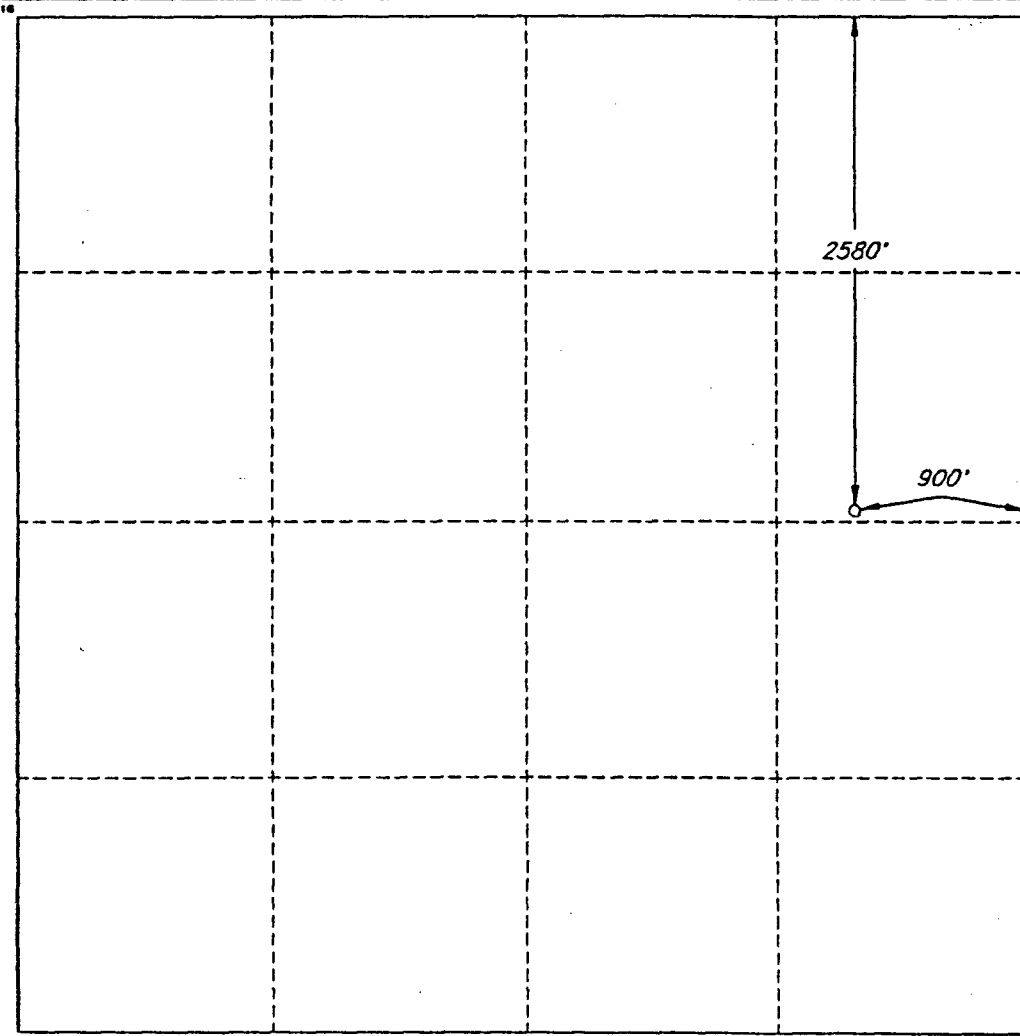
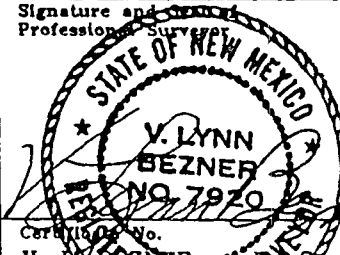
Submit to the Appropriate  
District Office  
State Lease - 4 copies  
Fee Lease - 3 copies

☐ AMENDED REPORT

**DISTRICT IV**  
P. O. Box 2088  
Santa Fe, NM 87507-2088

## WELL LOCATION AND ACREAGE DEDICATION PLAT

1 API Number		2 Pool Code 58300		3 Pool Name TEAGUE BLINEBRY					
4 Property Code 58300 009280		5 Property Name E. C. HILL 'B' FEDERAL					6 Well Number 21		
7 OGRID No. 017805		8 Operator Name PLAINS PETROLEUM OPERATING COMPANY					9 Elevation 3271'		
10 SURFACE LOCATION									
UL or lot no. H	Section 34	Township 23 SOUTH	Range 37 EAST, N.M.P.M.	Lot Ida	Feet from the 2580'	North/South line NORTH	Feet from the 900'	East/West line EAST	County LEA
11 BOTTOM HOLE LOCATION IF DIFFERENT FROM SURFACE									
UL or lot no.	Section	Township	Range	Lot Ida	Feet from the	North/South line	Feet from the	East/West line	County
12 Dedicated Acres	13 Joint or Infill		14 Consolidation Code		15 Order No.				
NO ALLOWABLE WELL BE ASSIGNED TO THIS COMPLETION UNTIL ALL INTERESTS HAVE BEEN CONSOLIDATED OR A NON-STANDARD UNIT HAS BEEN APPROVED BY THE DIVISION									

	<b>OPERATOR CERTIFICATION</b> <i>I hereby certify that the information contained herein is true and complete to the best of my knowledge and belief.</i>
	Signature <i>Stephen D. Owen</i>
	Printed Name Stephen D. Owen
	Title Area Engineer
Date May 8, 1996	
<b>SURVEYOR CERTIFICATION</b> <i>I hereby certify that the well location shown on this plat was plotted from field notes of actual surveys made by me or under my supervision, and that the same is true and correct to the best of my belief.</i>	
Date of Survey APRIL 30, 1996	
Signature and Seal of Professional Surveyor  <i>V. Lynn Bezner</i>	
Certificate No. V. LYNN BEZNER, No. 7920	
JOB #45026 LAND SURVEY / V.H.B.	

# OPERATOR'S COPY

Form 3160-3  
(November 1983)  
(formerly 9-331C)

SUBMIT IN TRIPLICATE\*  
(Other instructions on  
reverse side)

Form approved.  
Budget Bureau No. 1004-0136  
Expires August 31, 1985

## UNITED STATES DEPARTMENT OF THE INTERIOR BUREAU OF LAND MANAGEMENT

### APPLICATION FOR PERMIT TO DRILL, DEEPEN, OR PLUG BACK

1a. TYPE OF WORK

DRILL ☒

DEEPEN ☐

PLUG BACK ☐

b. TYPE OF WELL

OIL  
WELL ☒

GAS  
WELL ☐

OTHER ☐

SINGLE  
ZONE ☒

MULTIPLE  
ZONE ☐

2. NAME OF OPERATOR

PLAINS PETROLEUM OPERATING COMPANY

3. ADDRESS OF OPERATOR

415 W. Wall, Suite 1000

Midland, TX 79701

Phone

915/683-4434

4. LOCATION OF WELL (Report location clearly and in accordance with any State requirements.)\*

At surface

Unit Letter A, 1300' FNL & 500' FEL

Subject to

like Approval

By State

At proposed prod. zone

UNORTHODOX LOCATION:

14. DISTANCE IN MILES AND DIRECTION FROM NEAREST TOWN OR POST OFFICE\*

10.3 Miles NE of Jal, NM

15. DISTANCE FROM PROPOSED\*

LOCATION TO NEAREST  
PROPERTY OR LEASE LINE, FT.  
(Also to nearest drig. unit line, if any)

900'

16. NO. OF ACRES IN LEASE

520

17. NO. OF ACRES ASSIGNED  
TO THIS WELL

40

18. DISTANCE FROM PROPOSED LOCATION\*

TO NEAREST WELL, DRILLING, COMPLETED,  
OR APPLIED FOR, ON THIS LEASE, FT.

544'

19. PROPOSED DEPTH

5850'

20. ROTARY OR CABLE TOOLS

Rotary

21. ELEVATIONS (Show whether DF, RT, GR, etc.)

GR 3269'

Captain Controlled Water Basin

22. APPROX. DATE WORK WILL START\*

September 20, 1996

23.

#### PROPOSED CASING AND CEMENTING PROGRAM

SIZE OF HOLE	SIZE OF CASING	WEIGHT PER FOOT	SETTING DEPTH	QUANTITY OF CEMENT
12-1/4"	8-5/8"	24# J-55	1175'	350 sx circ
7-7/8"	5-1/2"	15.5# K-55	5850'	1645 sx Circ

Propose to drill the well through the Blinebry and complete as a Blinebry producer.

#### Mud Program

0' - 1175' Spud Mud, FW, Gel  
1175' - 5850' Brine & native mud, MW 10 - 10.2 ppg  
Vis 26 - 28, SW gel for logs

#### BOP

A 3000 psi Shaffer double hydraulic operated will be used and tested at installation, drill out and each time they are removed or rearranged. BOP used as a two-mud-system.

Approval Subject to  
General Requirements and  
Special Stipulations  
Attached

IN ABOVE SPACE DESCRIBE PROPOSED PROGRAM: If proposal is to deepen or plug back, give data on present productive zone and proposed new productive zone. If proposal is to drill or deepen directionally, give pertinent data on subsurface locations and measured and true vertical depths. Give blowout preventer program, if any.

24.

SIGNED Stephen D. Owen

TITLE Petroleum Engineer

DATE May 8, 1996

(This space for Federal or State office use)

PERMIT NO.

APPROVAL DATE

APPROVED BY

TITLE

DATE

CONDITIONS OF APPROVAL, IF ANY:

\*See Instructions On Reverse Side

Title 18 U.S.C. Section 1001, makes it a crime for any person knowingly and willfully to make to any department or agency of the United States any false, fictitious or fraudulent statements or representations as to any matter within its jurisdiction.

UNITED STATES  
DEPARTMENT OF THE INTERIOR  
BUREAU OF LAND MANAGEMENT

FORM APPROVED  
Budget Bureau No. 1004-0135  
Expires: March 31, 1993

**SUNDRY NOTICES AND REPORTS ON WELLS**

Do not use this form for proposals to drill or to deepen or reentry to a different reservoir.  
Use "APPLICATION FOR PERMIT—" for such proposals

5. Lease Designation and Serial No.  
NMLC 064118

6. If Indian, Allottee or Tribe Name

7. If Unit or CA, Agreement Designation

8. Well Name and No.

E. C. HILL "B" FEDERAL #22

9. API Well No.

10. Field and Pool, or Exploratory Area  
Teague Blinebry

11. County or Parish, State  
LEA

**SUBMIT IN TRIPLICATE**

1. Type of Well

☒ Oil Well ☐ Gas Well ☐ Other

2. Name of Operator

PLAINS PETROLEUM OPERATING COMPANY

3. Address and Telephone No.

415 W. Wall, Suite 1000, Midland, TX 79701 915/683-4434

4. Location of Well (Footage, Sec., T., R., M., or Survey Description)

1220' FNL & 980' FEL, Unit Letter A, Sec. 34, T23S, R37E

12. CHECK APPROPRIATE BOX(S) TO INDICATE NATURE OF NOTICE, REPORT, OR OTHER DATA

TYPE OF SUBMISSION

- ☐ Notice of Intent  
☒ Subsequent Report  
☐ Final Abandonment Notice

TYPE OF ACTION

- ☐ Abandonment  
☐ Recompletion  
☐ Plugging Back  
☐ Casing Repair  
☐ Altering Casing "Move Location"  
☒ Other Amend Legal description on Application to Drill  
☐ Change of Plans  
☐ New Construction  
☐ Non-Routine Fracturing  
☐ Water Shut-Off  
☐ Conversion to Injection  
☐ Dispose Water

(Note: Report results of multiple completion on Well Completion or Recompletion Report and Log form.)

13. Describe Proposed or Completed Operations (Clearly state all pertinent details, and give pertinent dates, including estimated date of starting any proposed work. If well is directionally drilled, give subsurface locations and measured and true vertical depths for all markers and zones pertinent to this work.)"

This is notification of amending/move originally staked location from 1300' FNL & 900' FEL to 1220' FNL & 980' FEL of Section 34, T23S, R37E.

Location was moved to avoid the Texas New Mexico Pipeline on the south side of the location as per conversation with Barry Hunt 5-13-96.

14. I hereby certify that the foregoing is true and correct

Signed Stephen D. Owen Stephen D. Owen

Title Area Engineer

Date 5-20-96

(This space for Federal or State office use)

Approved by Paul E. Mann

Title Area Manager

Date 6/10/96

Conditions of approval, if any:

**DISTRICT I**  
P. O. Box 1980  
Hobbs, NM 88241-1980

State of New Mexico  
Energy, Minerals, and Natural Resources Department

Form C-102  
Revised 02-10-94

Instructions on back

**DISTRICT II**  
P. O. Drawer DD  
Artesia, NM 88211-0719

**OIL CONSERVATION DIVISION**

P. O. Box 2088  
Santa Fe, New Mexico 87504-2088

Submit to the Appropriate  
District Office  
State Lease - 4 copies  
Fee Lease - 3 copies

☐ AMENDED REPORT

**DISTRICT III**  
1000 Rio Brazos Rd.  
Aztec, NM 87410

**DISTRICT IV**  
P. O. Box 2088  
Santa Fe, NM 87507-2088

**WELL LOCATION AND ACREAGE DEDICATION PLAT**

1 API Number		2 Pool Code 58300		3 Pool Name TEAGUE BLINEBRY	
4 Property Code 009280		5 Property Name E. C. HILL 'B' FEDERAL			6 Well Number 22
7 OGRID No. 017805		8 Operator Name PLAINS PETROLEUM OPERATING COMPANY			9 Elevation 3267'

**10 SURFACE LOCATION**

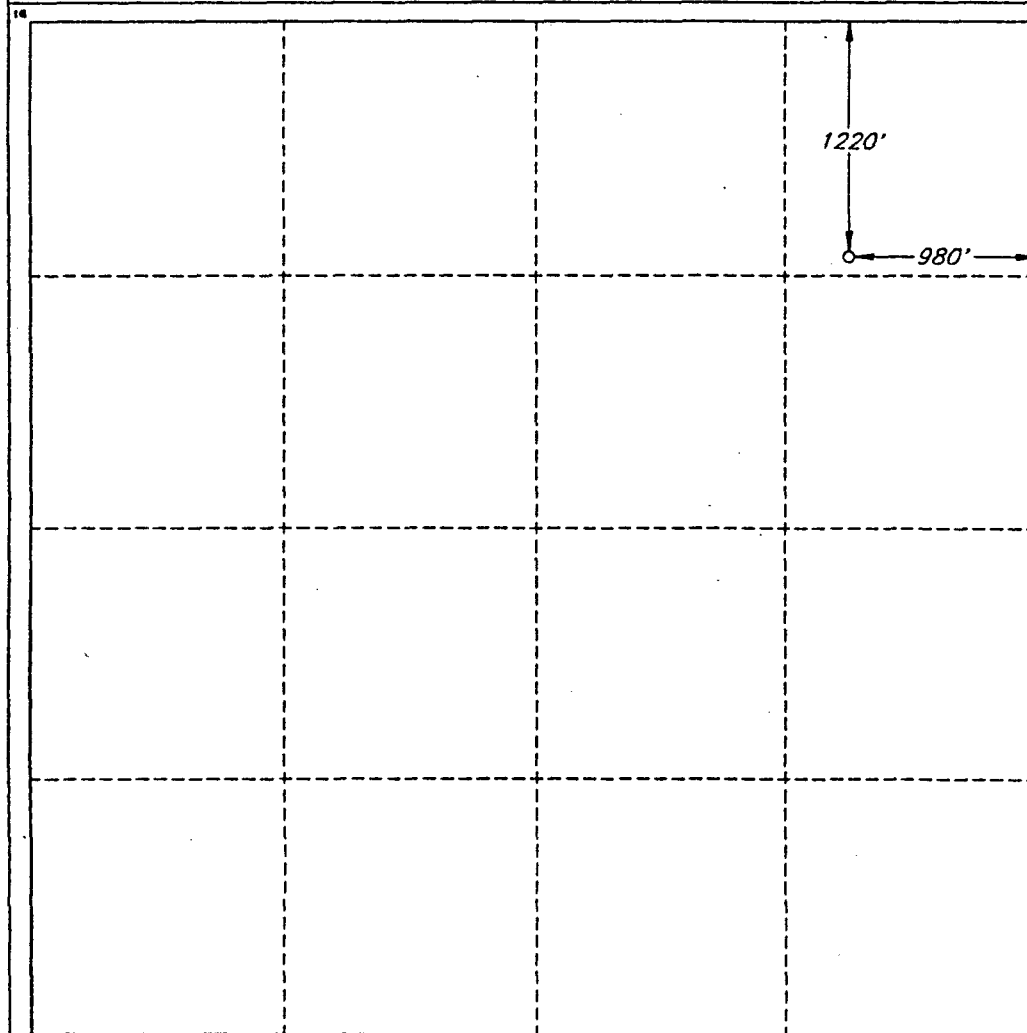
UL or lot no.	Section	Township	Range	Lot Ida	Feet from the	North/South line	Feet from the	East/West line	County
A	34	23 SOUTH	37 EAST, N.M.P.M.		1220'	NORTH	980'	EAST	LEA

**"BOTTOM HOLE LOCATION IF DIFFERENT FROM SURFACE**

UL or lot no.	Section	Township	Range	Lot Ida	Feet from the	North/South line	Feet from the	East/West line	County

12 Dedicated Acres	13 Joint or Infill	14 Consolidation Code	15 Order No.

NO ALLOWABLE WELL BE ASSIGNED TO THIS COMPLETION UNTIL ALL INTERESTS HAVE BEEN CONSOLIDATED OR A NON-STANDARD UNIT HAS BEEN APPROVED BY THE DIVISION



**OPERATOR CERTIFICATION**

I hereby certify that the information contained herein is true and complete to the best of my knowledge and belief.

Signature

*Stephen D. Owen*

Printed Name

Stephen D. Owen

Title

Area Engineer

Date

5/20/96

**SURVEYOR CERTIFICATION**

I hereby certify that the well location shown on this plat was plotted from field notes of actual surveys made by me or under my supervision, and that the same is true and correct to the best of my belief.

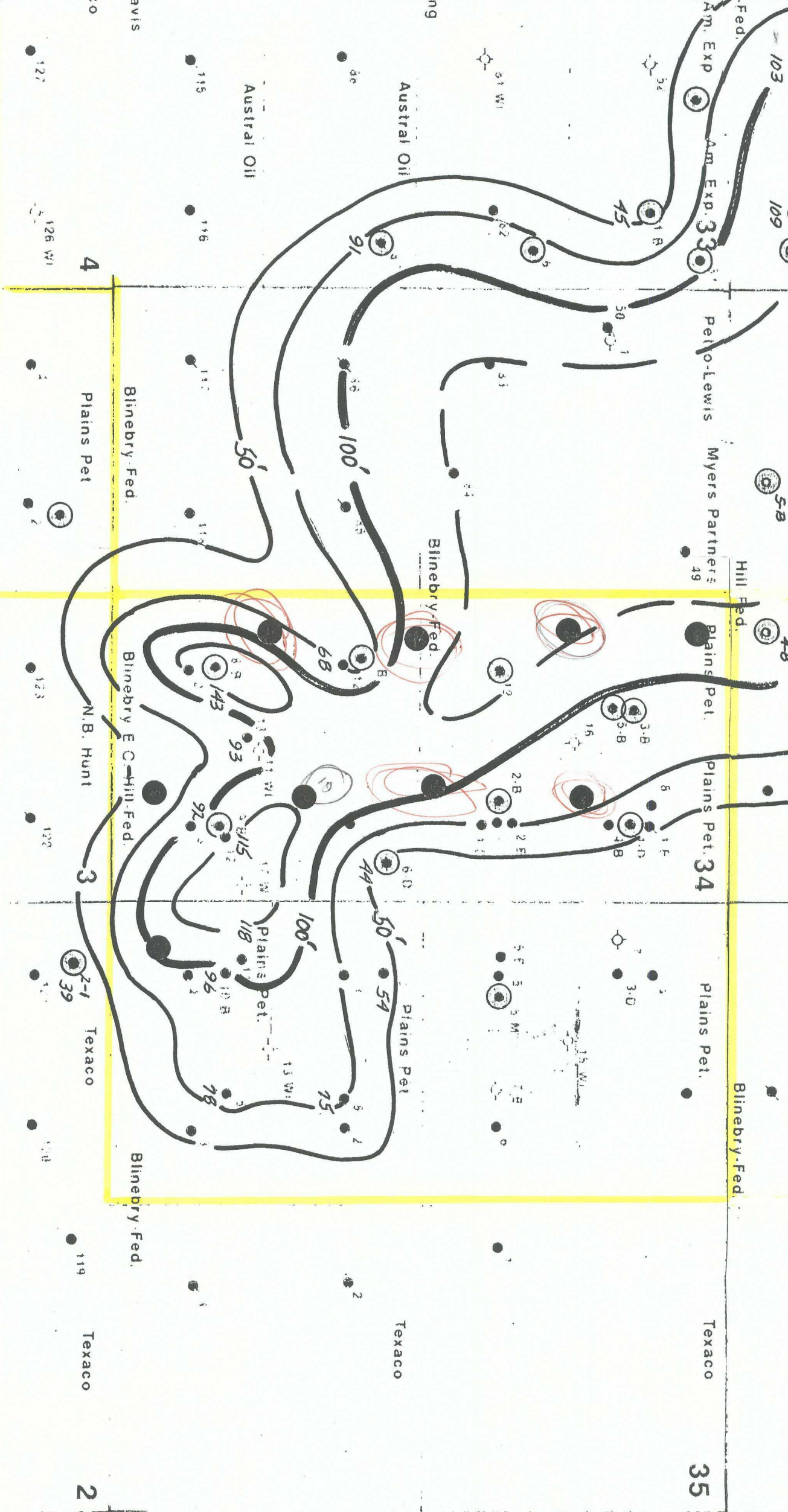
Date of Survey

MAY 15, 1996

Signature and Seal of Professional Surveyor

V. LYNN BEZNER  
NO. 7920  
Certified by  
V. L. BEZNER, S.S. #7920  
JOB #45220-97 45 SW / JSJ

T  
24  
S



## INTENTIONAL OMISSIONS

The following document(s) have been intentionally omitted from this file due to the indicated reasons.

FILE # NSL 3683

### DESCRIPTION OF OMITTED DOCUMENTS

OMITTED DOCUMENT

REASON OMITTED

Plat Showing Proposed & Existing Wells Too large



STATE OF NEW MEXICO

ENERGY, MINERALS AND NATURAL RESOURCES DEPARTMENT

OIL CONSERVATION DIVISION  
HOBBS DISTRICT OFFICE

6/21/96

GOVERNOR

POST OFFICE BOX 1980  
HOBBS, NEW MEXICO 88241-1980  
(505) 393-6161

OIL CONSERVATION DIVISION  
P. O. BOX 2088  
SANTA FE, NEW MEXICO 87501

RE: Proposed:

MC \_\_\_\_\_  
DHC \_\_\_\_\_  
NSL X \_\_\_\_\_  
NSP \_\_\_\_\_  
SWD \_\_\_\_\_  
WFX \_\_\_\_\_  
PMX \_\_\_\_\_

Gentlemen:

I have examined the application for the:

Plains Petroleum Oper. Co

Operator

Lease & Well No.

Unit

S-T-R

- 1) E. C. Hill "B" Federal #18, 1400' FNL & 2280' FEL, Sec. 34 (G) T23S, R37E
- 2) E. C. Hill "B" Federal #19, 2600' FSL & 2280' FEL, Sec. 34 (J) T23S, R37E
- 3) E. C. Hill "B" Federal #20, 1300' FSL & 2280' FEL, Sec. 34 (O) T23S, R37E
- 4) E. C. Hill "B" Federal #21, 2580' FNL & 900' FEL, Sec. 34 (H) T23S, R37E
- 5) E. C. Hill "B" Federal #22, 1220' FNL & 980' FEL, Sec. 34 (A) T23S, R37E

and my recommendations are as follows:

OK

Yours very truly,

Jerry Sexton

Jerry Sexton  
Supervisor, District 1

/ed



STATE OF NEW MEXICO  
ENERGY, MINERALS AND NATURAL RESOURCES DEPARTMENT

OIL CONSERVATION DIVISION

2040 S. PACHECO  
SANTA FE, NEW MEXICO 87505  
(505) 827-7131

March 13, 1997

**Plains Petroleum Operating Company**  
**415 West Wall Street - Suite 1000**  
**Midland, Texas 79701**  
**Attention: James R. Sutherland**

*Administrative Order NSL-3774*

Dear Mr. Sutherland:

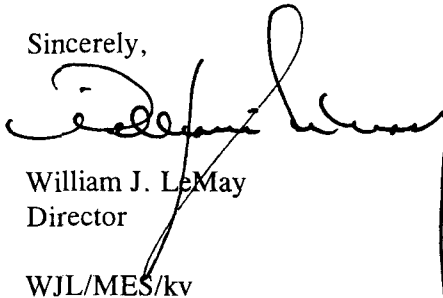
Reference is made to the Division's files on Administrative Order Nos. NSL-3683 and NSL-3399 and to your application dated February 14, 1997 for an unorthodox Teague-Blincy oil well location for your proposed Baylus Cade Federal Well No. 11 to be drilled 1724 feet from the South line and 1584 feet from the West line (Unit K) of Section 35, Township 23 South, Range 37 East, NMPM, Lea County, New Mexico.

The geologic interpretation submitted with this application indicates that a well drilled at the proposed unorthodox oil well location will be at a more favorable geologic position within the Devonian formation than a well drilled at a location considered to be standard within the proposed standard 40-acre oil spacing and proration unit comprising the NE/4 SW/4 of said Section 35.

The application has been duly filed under the provisions of Rule 104.F of the General Rules and Regulations of the New Mexico Oil Conservation Division ("Division"), revised by Division Order No. R-10533, issued by the Oil Conservation Commission in Case 11,351 on January 18, 1996.

By the authority granted me under the provisions of Division General Rule 104.F(2), the above-described unorthodox oil well location is hereby approved.

Sincerely,



William J. LeMay  
Director

WJL/MES/kv

cc: Oil Conservation Division } Hobbs  
U. S. Bureau of Land Management - Carlsbad  
File: NSL-3683  
NSL-3399