

May 21, 1996

Mr. Michael E. Stogner
New Mexico Oil Conservation Division
2040 South Pacheco St.
Santa Fe, NM 87505

**Re: Application for Administrative Approval of
Unorthodox Location for Dugan Production Corp's Blanco Wash #1
1550' FSL & 1490' FEL (NW/4 SE/4)
Unit J, Section 2, T24N, R9W
San Juan County, New Mexico
Whitewash Mesa Verde Oil Pool**

Dear Mr. Stogner:

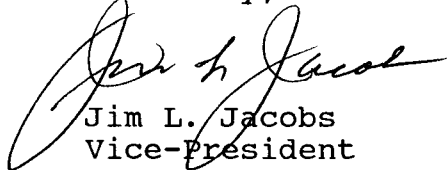
Dugan Production Corp. hereby requests approval for an unorthodox location for the referenced well. Copies of the well location plat (NMOCD Form C-102), topographic map, production map, and a map showing offsetting operators are attached for your reference.

The subject well was originally completed as a marginal producer in the White Wash Mancos/Dakota pool. To improve production from this wellbore, a retrievable bridge plug was set above the Gallup perforations, the Mesa Verde was perforated and tested.

The unorthodox location is necessary due to re-entry of a pre-existing White Wash Mancos/Dakota completion.

A copy of this application is being submitted to all offset operators by certified mail with a request that they furnish your office in Santa Fe with a Waiver of Objection.

Sincerely,



Jim L. Jacobs
Vice-President

KF/cg

attachs.

cc: Mr. Ernie Busch, NMOCD Aztec
BLM, Farmington
Offset Operators (Bureau of Indian Affairs, Navajo Allotted)

OIL CONSERVATION DIVISION
PO Box 2088
Santa Fe, NM 87504-2088

Submit to Appropriate District Office
State Lease - 4 Copies
Fee Lease - 3 Copies

☐ AMENDED REPORT

WELL LOCATION AND ACREAGE DEDICATION PLAT

¹ API Number 30 045 22473		² Pool Code 96552	³ Pool Name White Wash Mesa Verde (Oil)
⁴ Property Code 003596	⁵ Property Name Blanco Wash		⁶ Well Number 1
⁷ OGRID No. 006515	⁸ Operator Name Dugan Production Corp.		⁹ Elevation 6588' GL

¹⁰ Surface Location

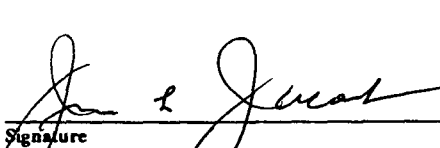
UL or lot no.	Section	Township	Range	Lot Ida	Feet from the	North/South line	Feet from the	East/West line	County
J	2	24N	9W		1550	South	1490	East	San Juan

11 Bottom Hole Location If Different From Surface

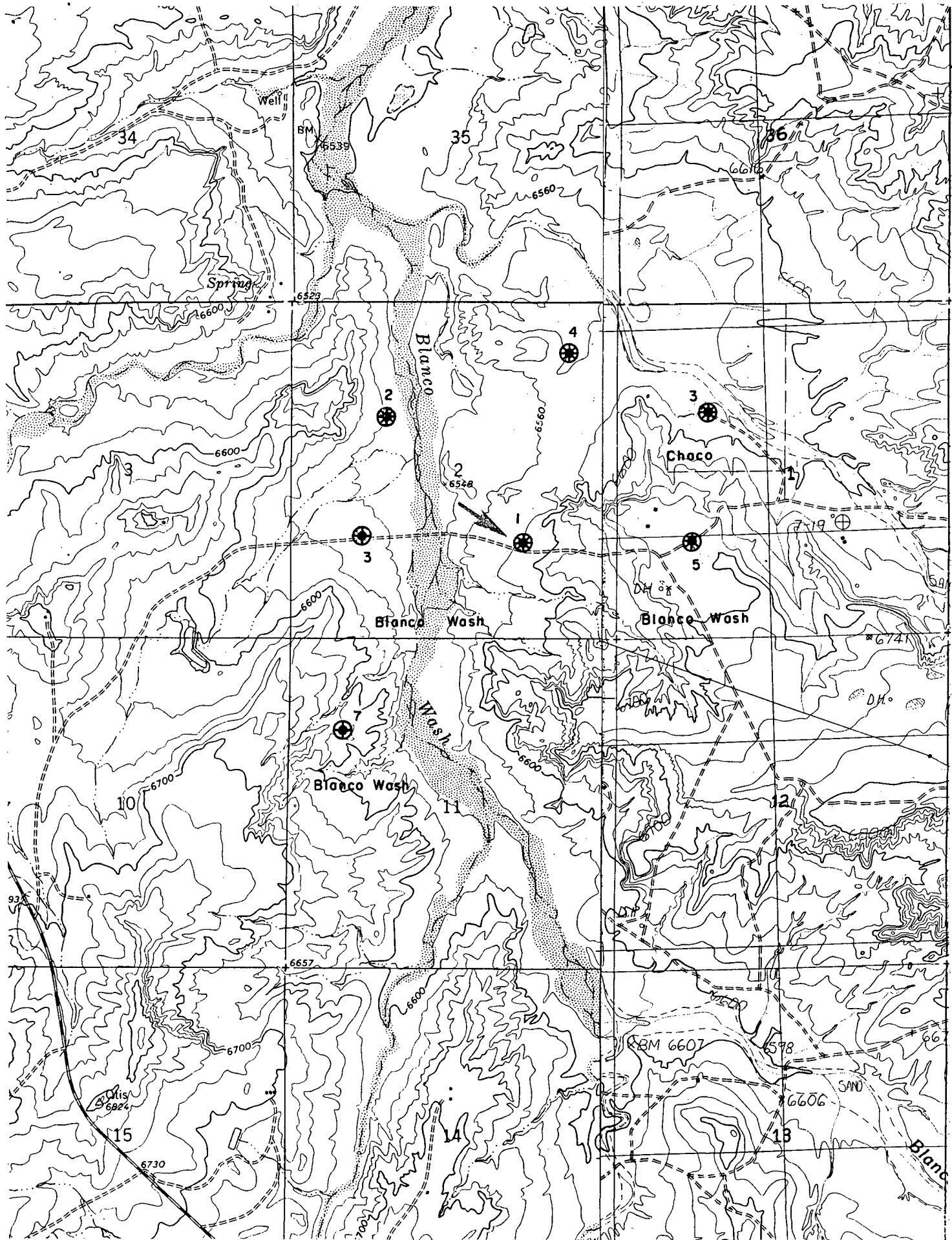
UL or lot no.	Section	Township	Range	Lot Ida	Feet from the	North/South line	Feet from the	East/West line	County
---------------	---------	----------	-------	---------	---------------	------------------	---------------	----------------	--------

¹² Dedicated Acres 40	¹³ Joint or Infill	¹⁴ Consolidation Code	¹⁵ Order No. Application for Unorthodox Location filed
-------------------------------------	-------------------------------	----------------------------------	---

NO ALLOWABLE WILL BE ASSIGNED TO THIS COMPLETION UNTIL ALL INTERESTS HAVE BEEN CONSOLIDATED
OR A NON-STANDARD UNIT HAS BEEN APPROVED BY THE DIVISION

16				<p>17 OPERATOR CERTIFICATION</p> <p><i>I hereby certify that the information contained herein is true and complete to the best of my knowledge and belief</i></p> <p> Signature Jim L. Jacobs Printed Name Vice President Title 5/17/96 Date</p>
		Sec. 2		<p>18 SURVEYOR CERTIFICATION</p> <p><i>I hereby certify that the well location shown on this plat was plotted from field notes of actual surveys made by me or under my supervision, and that the same is true and correct to the best of my belief.</i></p> <p>March 16, 1977 Date of Survey</p> <p>Signature and Seal of Professional Surveyer: Surveyed by E.V. Echohawk, L.S. (see original plat)</p> <p>3602 Certificate Number</p>
		Nav. Alltd. 14-20-0603- 1404	1490'	

R-9-W



Application for Administrative Approval of Unorthodox Location
 Dugan Production Corp's Blanco Wash #1
 1550' FSL & 1490' FEL, Unit J, Sec. 2, T24N, R9W, San Juan County, NM
 Topographic Map

R-9-W

34

35

36

T
25
N

Dugan NA-14-20-0603-1403 Dugan NA-14-20-0603-1405

T
24
N

3

Open Dugan
Navajo Allotted NA-14-20-0603-1404

1

10

11

12

Application for Administrative Approval of Unorthodox Location
Dugan Production Corp's Blanco Wash #1
1550' FSL & 1490' FEL, Unit J, Sec. 2, T24N, R9W
Whitewash Mesa Verde Oil Pool, San Juan County, NM
Offsetting Operators Map