

**BURLINGTON
RESOURCES**

SAN JUAN DIVISION

NSL - BR. MVI

October 4, 1996

Sent Federal Express

Mr. William LeMay
New Mexico Oil Conservation Division
2040 South Pacheco
Santa Fe, New Mexico 87505

RECEIVED
OCT 7 1996
Oil Conservation Division

Re: San Juan 30-6 Unit #83A
2530'FSL, 2315'FEL Section 15, T-30-N, R-7-W, Rio Arriba County, New Mexico
API # 30-039-(not yet assigned)

Dear Mr. LeMay:

Burlington Resources is applying for administrative approval of a non-standard location for the above location in the Mesa Verde formation. This application for the referenced location is due to terrain, the presence of archaeology, power lines and pipelines.

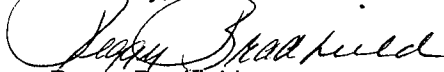
The following attachments are for your review:

1. Application for Permit to Drill.
2. Completed C-102 at referenced location.
3. Offset operators/owners plat
4. 7.5 minute topographic map showing the orthodox windows, and enlargement of the map to define topographic features.

A copy of this application is being submitted to all offset owners/ operators by certified mail with a request that they furnish you with a Waiver of Objection, and return one copy to this office. In accordance with Rule 1207 A.5, all parties should be advised that if they have an objection, it must be filed in writing within twenty days from this date.

We appreciate your earliest consideration of this application.

Sincerely,



Peggy Bradfield
Regulatory/Compliance Representative
encs.

WAIVER


_____ hereby waives objection to Burlington Resources' application for a non-standard location for their San Juan 30-6 Unit #83A as proposed above.

By: _____ Date: _____

xc: Devon Energy Corp

UNITED STATES
DEPARTMENT OF THE INTERIOR
BUREAU OF LAND MANAGEMENT

APPLICATION FOR PERMIT TO DRILL, DEEPEN, OR PLUG BACK

1a. Type of Work DRILL	5. Lease Number NM-012694 Unit Reporting Number	
1b. Type of Well GAS	6. If Indian, All. or Tribe	
2. Operator Meridian Oil Inc.	7. Unit Agreement Name San Juan 30-6 Unit	
3. Address & Phone No. of Operator PO Box 4289, Farmington, NM 87499 (505) 326-9700	8. Farm or Lease Name San Juan 30-6 Unit 9. Well Number 83A	
4. Location of Well 2530' FSL, 2315' FEL Latitude 36° 48.7, Longitude 107° 33.4	10. Field, Pool, Wildcat Blanco Mesa Verde 11. Sec., Twn, Rge, Mer. (NMPM) Sec 15, T-30-N, R-7-W API # 30-039-	
14. Distance in Miles from Nearest Town 4 miles to Navajo City	12. County Rio Arriba	13. State NM
15. Distance from Proposed Location to Nearest Property or Lease Line 2315'		
16. Acres in Lease	17. Acres Assigned to Well E/2 320	
18. Distance from Proposed Location to Nearest Well, Drig, Compl, or Applied for on this Lease 400'		
19. Proposed Depth 5747	20. Rotary or Cable Tools Rotary	
21. Elevations (DF, FT, GR, Etc.) 6225' GR	22. Approx. Date Work will Start	
23. Proposed Casing and Cementing Program See Operations Plan attached		
24. Authorized by:  Regulatory/Compliance Administrator	9-30-96 Date	

PERMIT NO. _____ APPROVAL DATE _____
APPROVED BY _____ TITLE _____ DATE _____

Archaeological Report to be submitted
Threatened and Endangered Species Report submitted by Ecosphere
NOTE: This format is issued in lieu of U.S. BLM Form 3160-3

District I
PO Box 1980, Hobbs, NM 88241-1980
District II
PO Drawer DD, Artesia, NM 88211-0719
District III
1000 Rio Brazos Rd., Aztec, NM 87410
District IV
PO Box 2088, Santa Fe, NM 87504-2088

State of New Mexico
Energy, Minerals & Natural Resources Department

OIL CONSERVATION DIVISION
PO Box 2088
Santa Fe, NM 87504-2088

Form C-102
Revised February 21, 1994
Instructions on back
Submit to Appropriate District Office
State Lease - 4 Copies
Fee Lease - 3 Copies

☐ AMENDED REPORT

WELL LOCATION AND ACREAGE DEDICATION PLAT

API Number	Pool Code	Pool Name
30-039-	772319	Blanco Mesaverde
Property Code	Property Name	Well Number
7469	San Juan 30-6 Unit	83A
OGRID No.	Operator Name	Elevation
14538	BURLINGTON RESOURCES OIL & GAS COMPANY	6225'

¹⁰ Surface Location

UL or lot no.	Section	Township	Range	Lot Ida	Feet from the	North/South line	Feet from the	East/West line	County
J	15	30 N	7 W		2530'	South	2315'	East	R.A.

¹¹ Bottom Hole Location If Different From Surface

UL or lot no.	Section	Township	Range	Lot Ida	Feet from the	North/South line	Feet from the	East/West line	County

¹² Dedicated Acres	¹³ Joint or Infill	¹⁴ Consolidation Code	¹⁵ Order No.
E/320			

NO ALLOWABLE WILL BE ASSIGNED TO THIS COMPLETION UNTIL ALL INTERESTS HAVE BEEN CONSOLIDATED
OR A NON-STANDARD UNIT HAS BEEN APPROVED BY THE DIVISION

16	5291.88'	17 OPERATOR CERTIFICATION	
		I hereby certify that the information contained herein is true and complete to the best of my knowledge and belief	
			Signature
		Peggy Bradfield	Printed Name
		Regulatory Administrator	Title
		Date 9-30-96	
		18 SURVEYOR CERTIFICATION	
		I hereby certify that the well location shown on this plat was plotted from field notes of actual surveys made by me or under my supervision, and that the same is true and correct to the best of my belief.	
		9-02-96	
		Date of Survey	
		Signature and Seal of Professional Surveyor	
		Certificate Number	

OPERATIONS PLAN

Well Name: San Juan 30-6 Unit #83A
Location: 2530' FSL, 2315' FEL Section 15, T-30-N, R-7-W
 Rio Arriba County, New Mexico
 Latitude 36° 48.7, Longitude 107° 33.4
Formation: Blanco Mesa Verde
Elevation: 6225' GL

<u>Formation Tops:</u>	<u>Top</u>	<u>Bottom</u>	<u>Contents</u>
Surface	San Jose	2137'	aquifer
Ojo Alamo	2137'	2697'	aquifer
Fruitland	2697'	3137'	gas
Pictured Cliffs	3137'	3227'	gas
Lewis	3227'	3822'	gas
Intermediate TD	3277'		
Mesa Verde	3822'	4997'	gas
Massive Cliff House	4997'	5077'	gas
Menefee	5077'	5347'	gas
Point Lookout	5347'		gas
Total Depth	5747'		

Logging Program:

Openhole Wireline Logging - none
 Cased hole logging - Gamma Ray Neutron
 Mud Logs/Coring/DST - none

Mud Program:

<u>Interval</u>	<u>Type</u>	<u>Weight</u>	<u>Vis.</u>	<u>Fluid Loss</u>
0- 200'	Spud	8.4-8.9	40-50	no control
200-3277'	Weighted	8.4-9.0	30-60	no control
3277-5747'	Gas/Mist	n/a	n/a	n/a

Pit levels will be visually monitored to detect gain or loss of fluid control.

Casing Program:

<u>Hole Size</u>	<u>Depth Interval</u>	<u>Csg. Size</u>	<u>Wt.</u>	<u>Grade</u>
12 1/4"	0' - 200'	9 5/8"	32.3#	H-40
8 3/4"	0' - 3277'	7"	20.0#	K-55
6 1/4"	3127' - 5747'	4 1/2"	10.5#	K-55

Tubing Program:

0' - 5747' 2 3/8" 4.7# J-55

BOP Specifications, Wellhead and Tests:Surface to Intermediate TD -

11" 2000 psi minimum double gate BOP stack (Reference Figure #1).
 After nipple-up prior to drilling out surface casing, rams and casing will be tested to 600 psi for 30 minutes.

BOP Specifications, Wellhead and Tests (cont'd):

Intermediate TD to Total Depth -

11" 2000 psi minimum double gate BOP stack (Reference Figure #1). After nipple-up prior to drilling out intermediate casing, rams and casing will be tested to 1500 psi for 30 minutes.

Surface to Total Depth -

2" nominal, 2000 psi minimum choke manifold (Reference Figure #3).

Completion Operations -

7 1/16" 2000 psi double gate BOP stack (Reference Figure #2). After nipple-up prior to completion, pipe rams, casing and liner top will be tested to 2000 psi for 15 minutes.

Wellhead -

9 5/8" x 7" x 2 3/8" x 2000 psi tree assembly.

General -

- Pipe rams will be actuated once each day and blind rams will be actuated once each trip to test proper functioning.
- An upper kelly cock valve with handle available and drill string valves to fit each drill string will be available on the rig floors at all times.
- BOP pit level drill will be conducted weekly for each drill crew.
- All BOP tests & drills will be recorded in daily drilling reports.
- Blind and pipe rams will be equipped with extension hand wheels.

Cementing:

9 5/8" surface casing - cement with 163 sx Class "B" cement with 1/4# flocele/sx and 3% calcium chloride (188 cu.ft. of slurry, 200% excess to circulate to surface). WOC 12 hrs. Test casing to 600 psi for 30 minutes.

Saw tooth guide shoe on bottom. Bowspring centralizers will be run in accordance with Onshore Order #2.

7" intermediate casing -

Lead w/274 sx Class "B" w/3% sodium medisilicate, 10# gilsonite/sx and 1/2# flocele/sx. Tail w/90 sx 50/50 Class "B" Poz w/2% calcium chloride, (862 cu.ft. of slurry, 75% excess to circulate to surface.) WOC minimum of 12 hours before drilling out intermediate casing. If cement does not circulate to surface, a CBL will be run to determine TOC. Test casing to 1500 psi for 30 minutes.

Cement nose guide shoe on bottom with float collar spaced on top of shoe joint. Bowspring centralizers spaced every other joint off bottom, to the base of the Ojo Alamo at 2697'. Two turbolating centralizers at the base of the Ojo Alamo at 2697'. Bowspring centralizers spaced every fourth joint from the base of the Ojo Alamo to the base of the surface casing.

4 1/2" Production Liner -

Cement to circulate liner top. Lead with 172 sx 65/35 Class "B" poz w/6% gel, 5# gilsonite/sx and 1/4# flocele/sx. Tail with 115 sx 50/50 Class "B" Poz w/1/4# flocele/sx, 5# gilsonite/sx and 0.3% fluid loss additive (470 cu.ft., 75% excess to circulate liner top). WOC a minimum of 18 hrs prior to completing.

Cement nose guide shoe on bottom with float collar spaced on top of shoe joint. The liner hanger will have a rubber packoff.

- If hole conditions permit, an adequate water spacer will be pumped ahead of each cement job to prevent cement/ mud contamination or cement hydration.
- The pipe will be rotated and/or reciprocated, if hole conditions permit.

Special Drilling Operations (Gas/Mist Drilling):

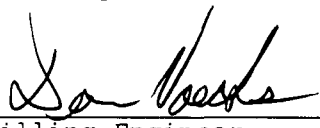
The following equipment will be operational while gas/mist drilling:

- An anchored blooie line will be utilized to discharge all cuttings and circulating medium to the blow pit a minimum of 100' from the wellhead.
- The blooie line will be equipped with an automatic igniter or pilot light.
- Compressors will be located a minimum of 100' from the wellhead in the opposite direction from the blooie line.
- Engines will have spark arresters or water cooled exhaust.
- The rotating head will be properly lubricated and maintained.
- A float valve will be utilized above the bit.
- Mud circulating equipment, water, and mud materials will be sufficient to maintain control of the well.

Additional Information:

- The Mesa Verde formation will be completed.
- No abnormal temperatures or hazards are anticipated.
- Anticipated pore pressures are as follows:

Fruitland Coal	800 psi
Pictured Cliffs	800 psi
Mesa Verde	700 psi
- Sufficient LCM will be added to the mud system to maintain well control, if lost circulation is encountered below the top of the Pictured Cliffs.
- The east half is dedicated to the Mesa Verde.
- This gas is dedicated.



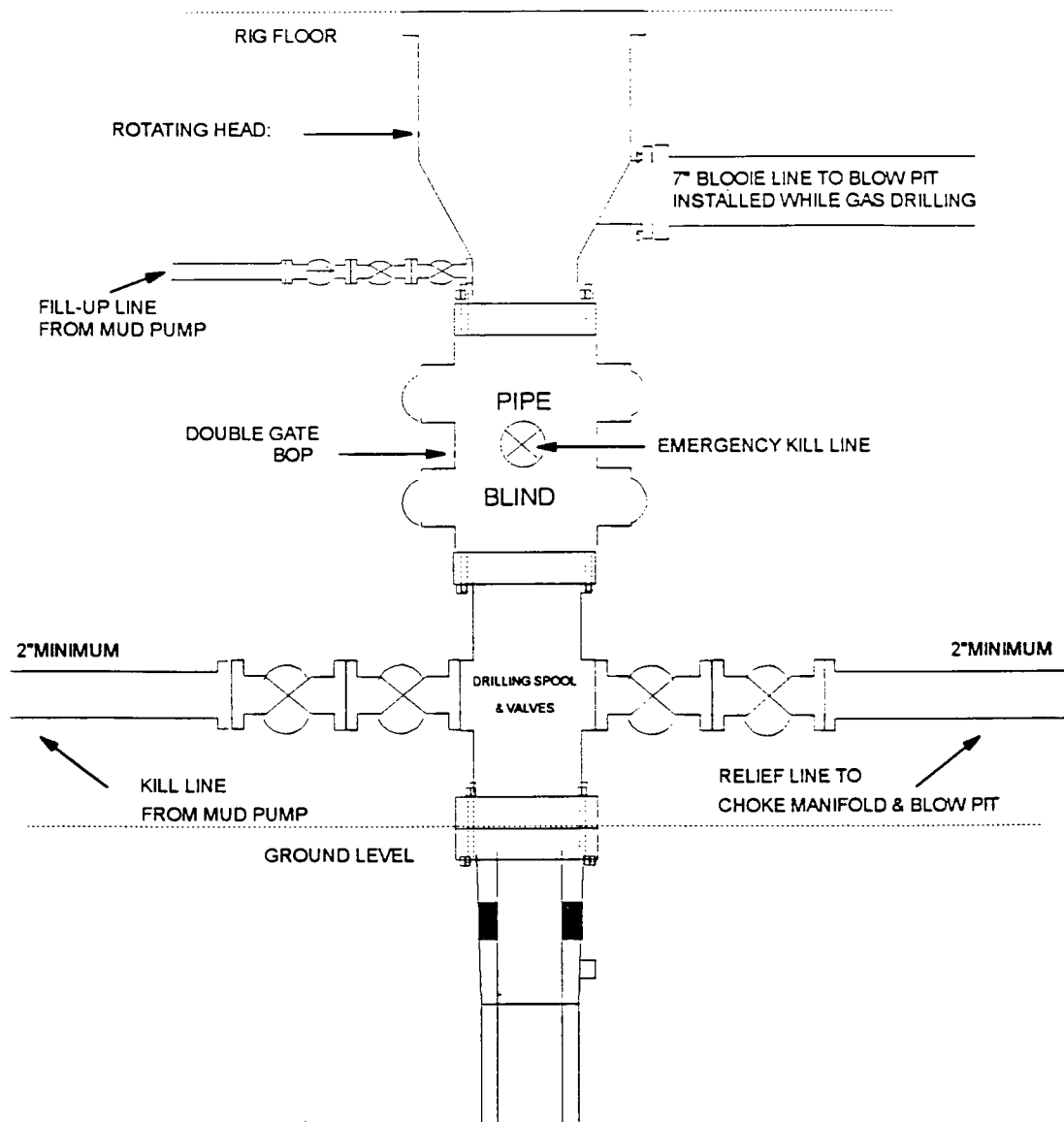
Drilling Engineer

10-1-96

Date

BURLINGTON RESOURCES

BOP Configuration 2M psi System

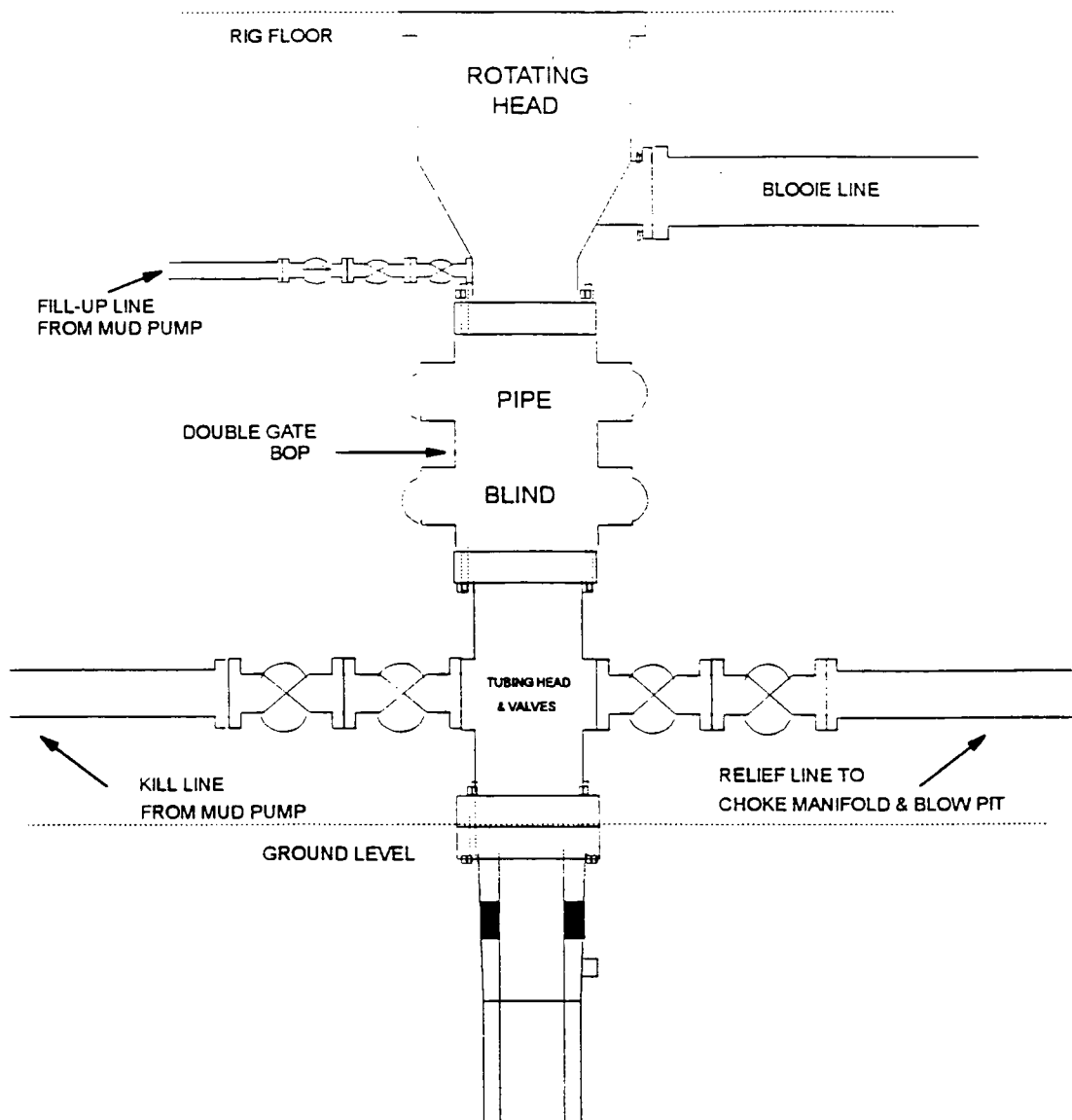


11" Bore, 2000psi minimum working pressure double gate BOP to be equipped with blind and pipe rams. A Schaffer Type 50 or equivalent rotating head to be installed on the top of the BOP. All equipment is 2000psi working pressure/or greater.

FIGURE #1

MERIDIAN OIL INC

BOP Configuration 2M psi System

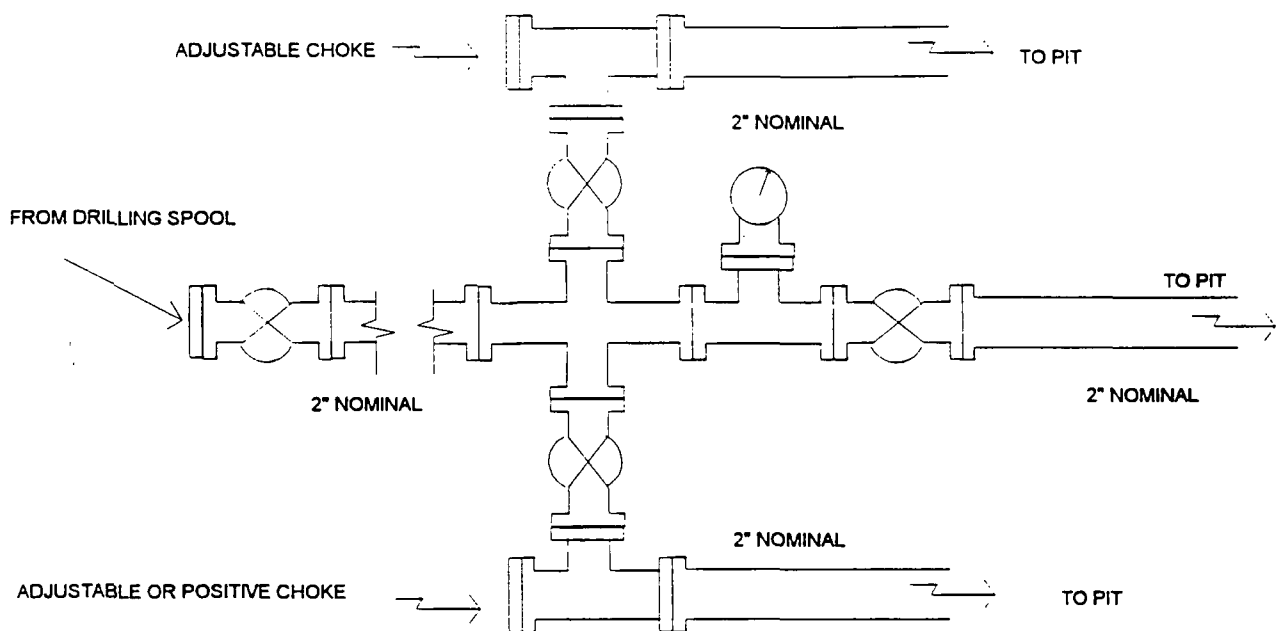


Minimum BOP installation for Completion operations. 7 1/16" Bore (6" Nominal), 3000 psi minimum working pressure double gate BOP to be equipped with blind and pipe rams.

FIGURE #2

MERIDIAN OIL INC.

Choke Manifold Configuration 2M System



Minimum choke manifold installation from surface to Total Depth.
2" minimum, 2000psi working pressure equipment with two chokes.

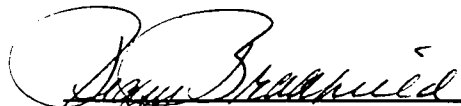
Figure #3

BURLINGTON RESOURCES

San Juan 30-6 Unit #83A Multi-Point Surface Use Plan

1. Existing Roads - Refer to Map No. 1. Existing roads used to access the proposed location will be properly maintained for the duration of the project. Bureau of Land Management right-of-way has been applied for as shown on Map No. 1.
2. Planned Access Road - Refer to Map No. 1. none required.
3. Location of Existing Wells - Refer to Map No. 1A.
4. Location of Existing and/or Proposed Facilities if Well is Productive -
 - a. On the Well Pad - Refer to Plat No. 1, anticipated production facilities plat.
 - b. Off the Well Pad - Anticipated facilities off the well pad will be applied for as required.
5. Location and Type of Water Supply - Water will be hauled by truck for the proposed project and will be obtained Navajo Dam at Francis Creek located in SE/4 Section 14, T-30-N, R-7-W, New Mexico.
6. Source of Construction Materials - If construction materials are required for the proposed project, such materials will be obtained from a commercial quarry.
7. Methods of Handling Waste Materials - All garbage and trash materials will be removed from the site for proper disposal. A portable toilet will be provided for human waste and serviced in a proper manner. If liquids are left in the reserve pit after completion of the project, the pit will be fenced until the liquids have had adequate time to dry. The location clean-up will not take place until such time as the reserve pit can be properly covered over to prevent run-off from carrying waste materials into the watershed. Reserve pits will be lined as needed with either 12 mil bio-degradable plastic liner or a bentonite liner. All earthen pits will be so constructed as to prevent leakage from occurring; no earthen pit will be located on natural drainage. Generation of hazardous waste is not anticipated. Federal regulations will be adhered to regarding handling and disposal of such waste if so generated.
8. Ancillary Facilities - None anticipated.
9. Wellsite Layout - Refer to the location diagram and to the wellsite cut and fill diagram (Figure No. 4). The blow pit will be constructed with a 2'/160' grade to allow positive drainage to the reserve pit and prevent standing liquids in the blow pit.

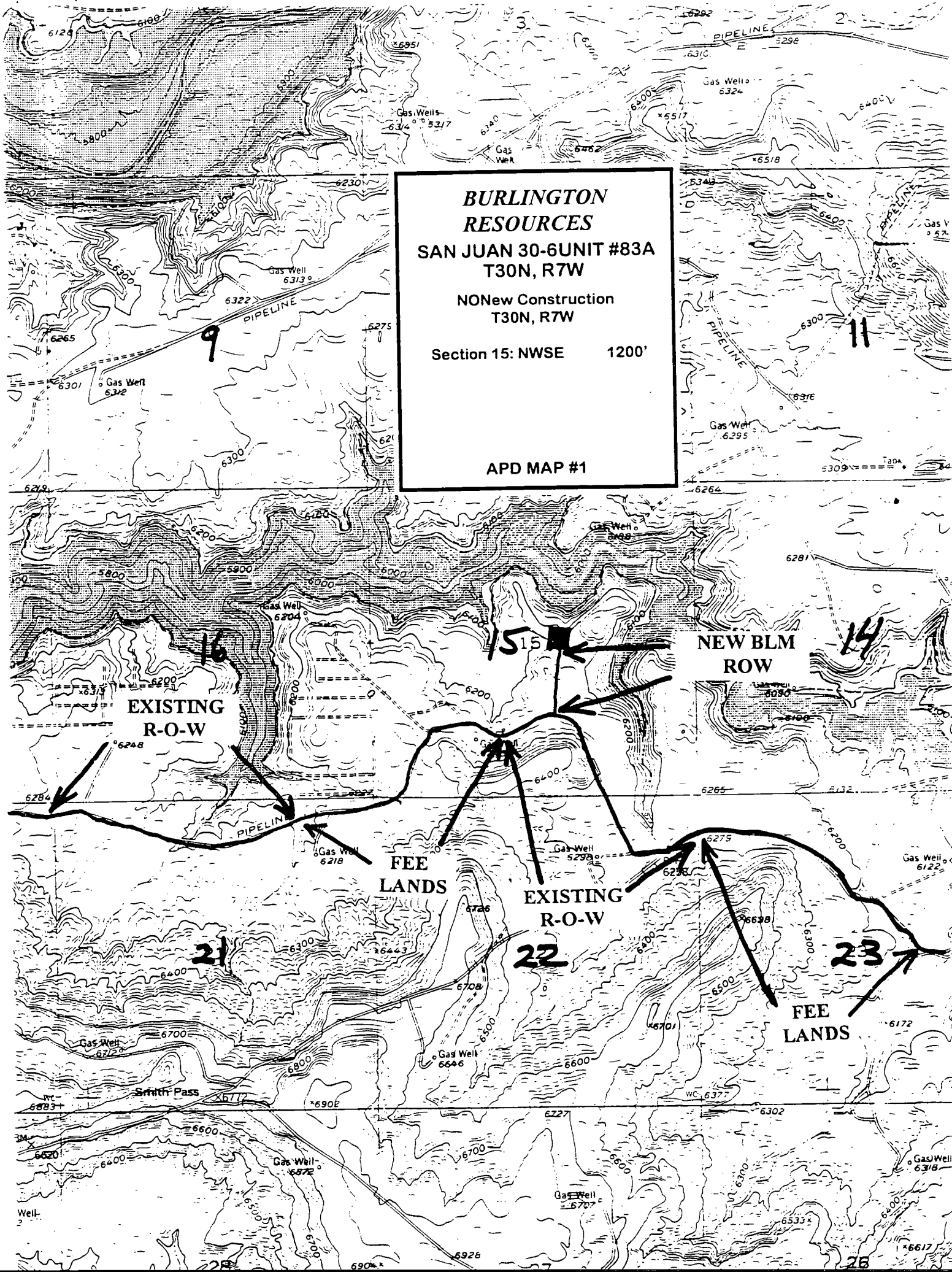
10. Plans for Restoration of the Surface - After completion of the proposed project, the location will be cleaned and leveled. The location will be left in such a condition that will enable reseeding operations to be carried out. Seed mixture as designated by the responsible government agency will be used. The reseeding operations will be performed during the time period set forth by the responsible government agency. The permanent location facilities will be painted as designated by the responsible government agency.
11. Surface Ownership - Bureau of Reclamation
12. Other Information - Environmental stipulations as outlined by the responsible government agency will be adhered to. Refer to the archaeological report for a description of the topography, flora, fauna, soil characteristics, dwellings, historical and cultural sites.
13. Operator's Representative and Certification - Burlington Resources Oil & Gas Company Regional Drilling Manager, Post Office Box 4289, Farmington, NM 87499, telephone (505) 326-9700. I hereby certify that I, or persons under my direct supervision, have inspected the proposed drill site and access route; that I am familiar with the conditions which presently exist; that the statements made in this plan, are to the best of my knowledge, true and correct; and that the work associated with the operations proposed herein will be performed by Burlington Resources Oil and Gas Company and its contractors and subcontractors in conformity with this plan and the terms and conditions under which it is approved.

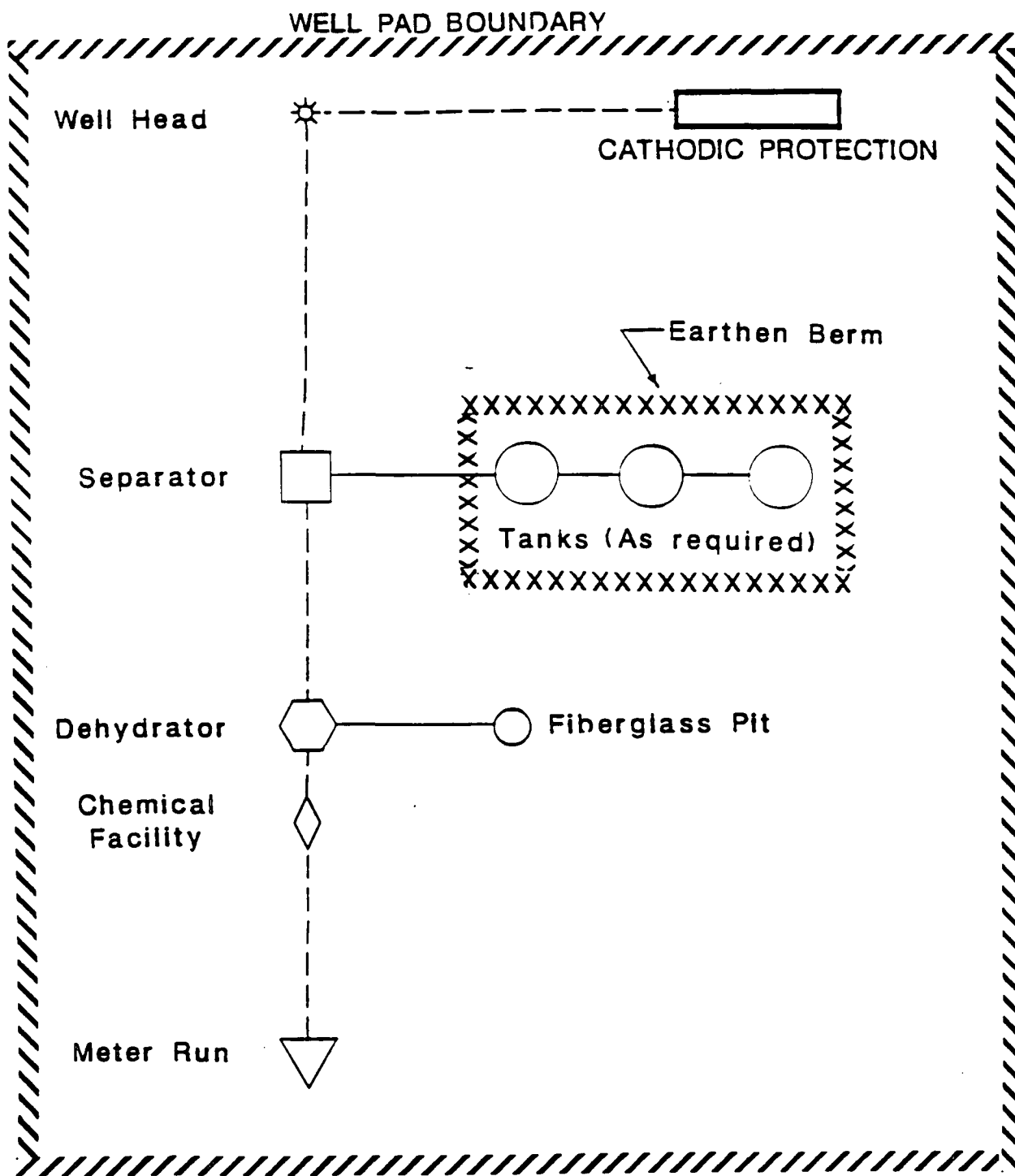


Regulatory/Compliance Administrator

9/3/96

Date





PLAT #1

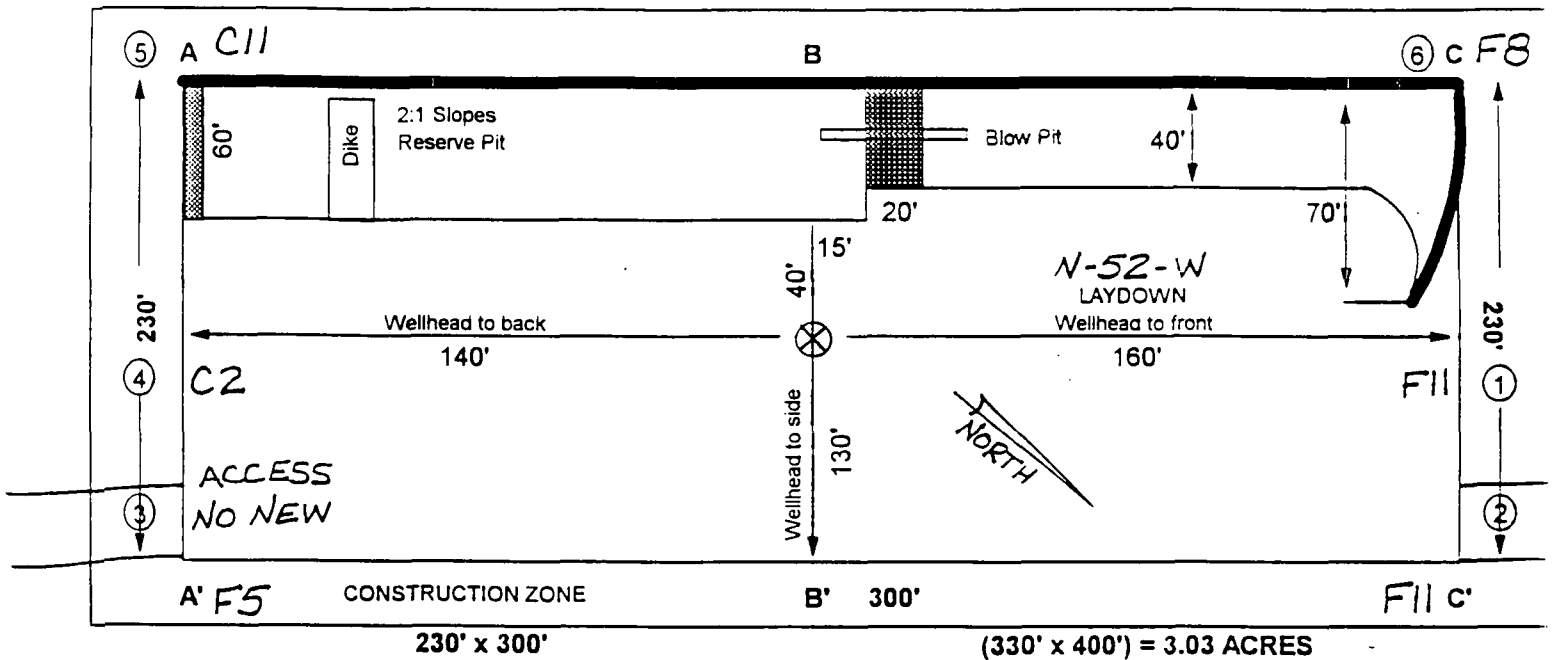
MERIDIAN OIL
 ANTICIPATED
 PRODUCTION FACILITIES
 FOR A
 MESA VERDE WELL

KFR 2/90

BURLINGTON RESOURCES

PLAT #1

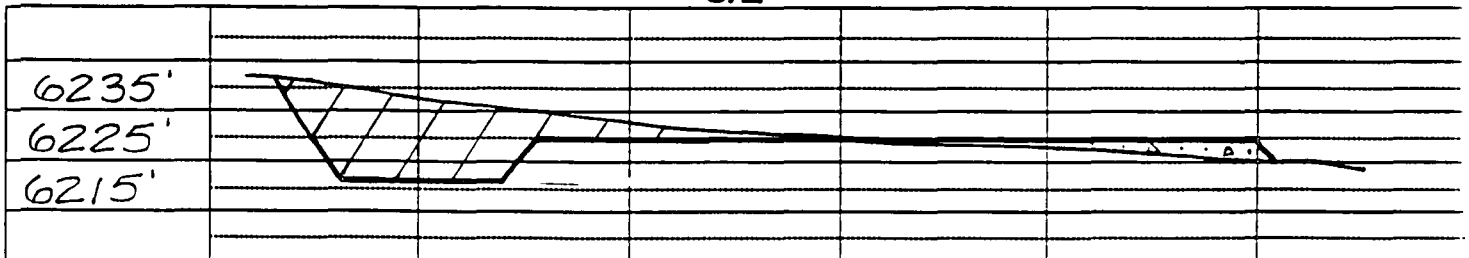
NAME: SAN JUAN 30-6 UNIT #83A
 FOOTAGE: 2530' FSL, 2315' FEL
 SEC 15 TWN 30 N.R. 7 W NMPM
 CO: RIO ARriba ST: NEW MEXICO
 ELEVATION: 6225' DATE: 9-02-96



Reserve Pit Dike: to be 8" above Deep side (overflow - 3' wide and 1' above shallow side).
 Blow Pit: overflow pipe halfway between top and bottom and to extend over plastic liner and into blow pit.

A - A'

C/L



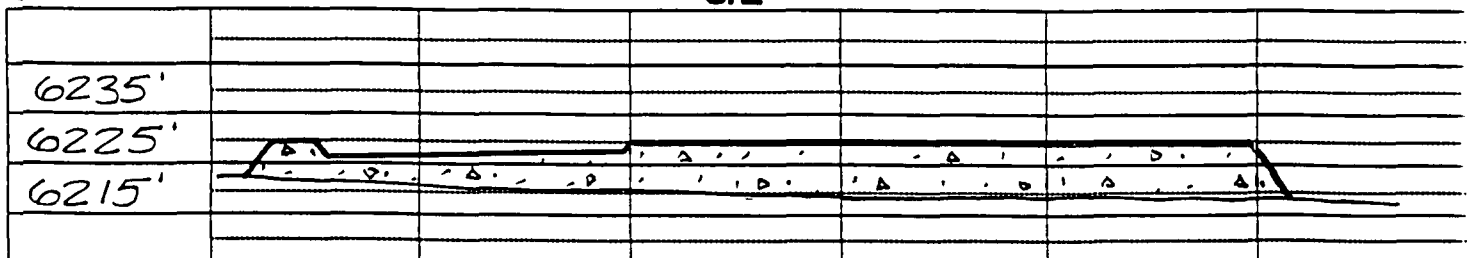
B - B'

C/L



C - C'

C/L

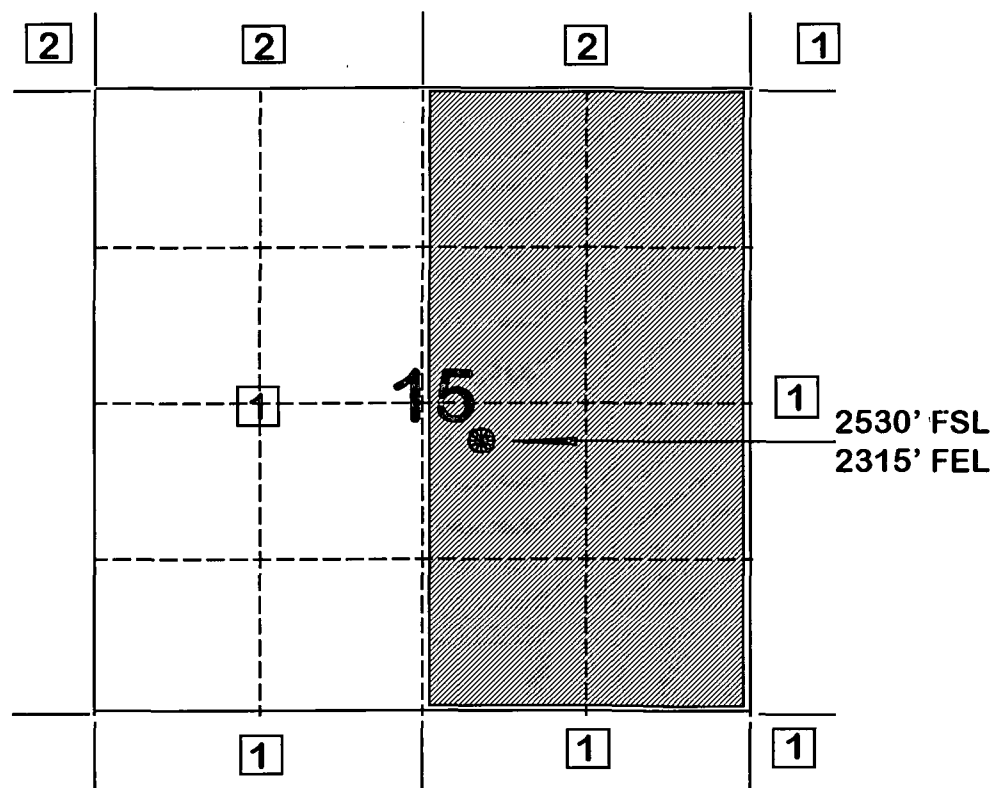


Note: Contractor should call One-Call for location of any marked or unmarked buried pipelines or cables on well pad and/or access road at least two (2) working days prior to construction.

BURLINGTON RESOURCES OIL AND GAS COMPANY

**San Juan 30-6 Unit #83A
OFFSET OPERATOR \ OWNER PLAT
NONSTANDARD LOCATION
Mesaverde Formation Well**

Township 30 North, Range 7 West



- 1) Burlington Resources Oil and Gas Company Successor to Meridian Oil Inc.
- 2) Devon Energy Corporation
1500 Mid American Tower
20 North Broadway
Oklahoma City, OK 73102-8250

Re: San Juan 30-6 Unit #83A
2530'FSL, 2315'FEL Section 15, T-30-N, R-7-W, Rio Arriba County, New Mexico
API # 30-039-(not yet assigned)

I hereby certify that the following offset operators/owners have been mailed notification of our application for non-standard location to drill the referenced well.

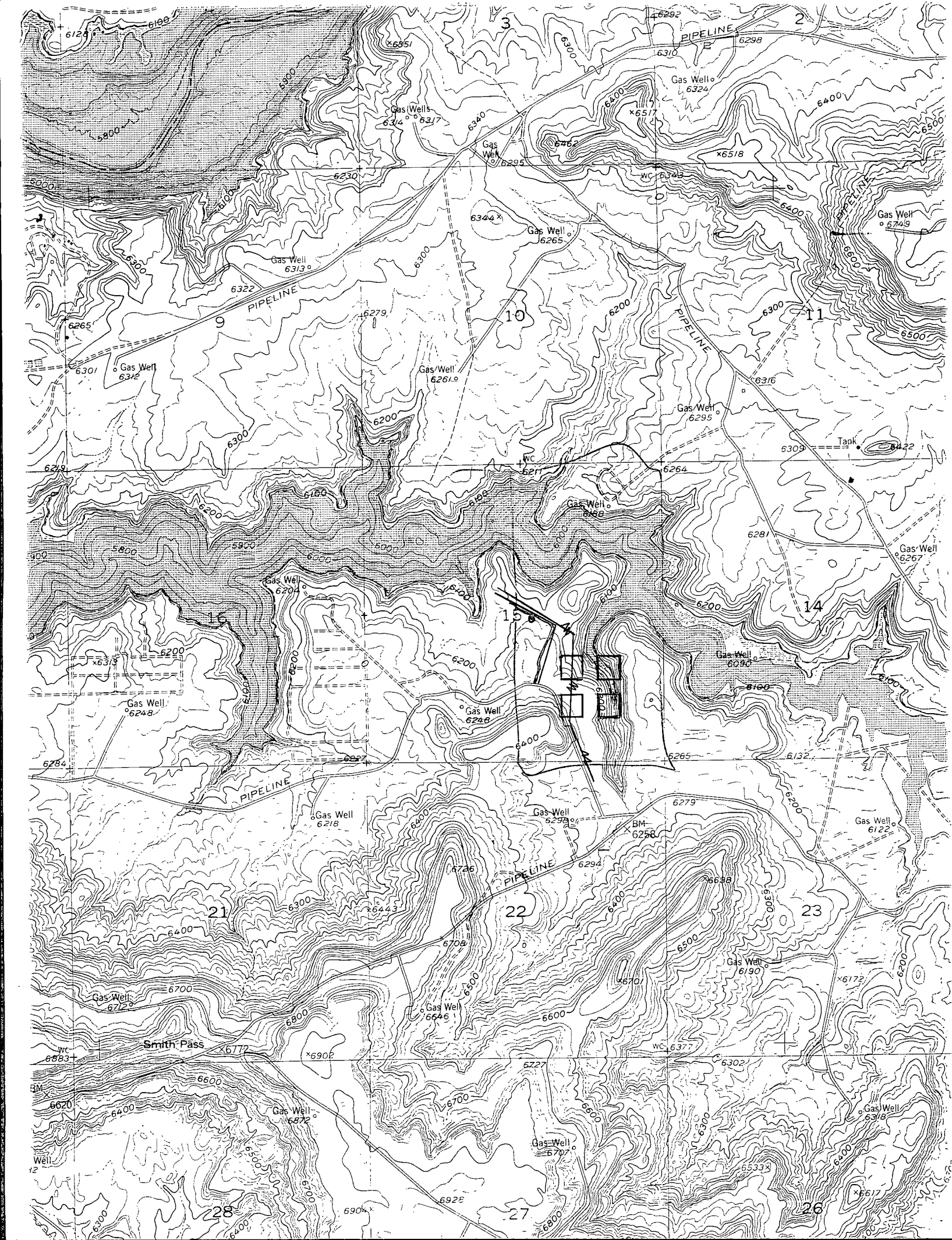
Devon Energy Corp
1500 Mid American Tower
20 N. Broadway
Oklahoma City, OK 73102-8250

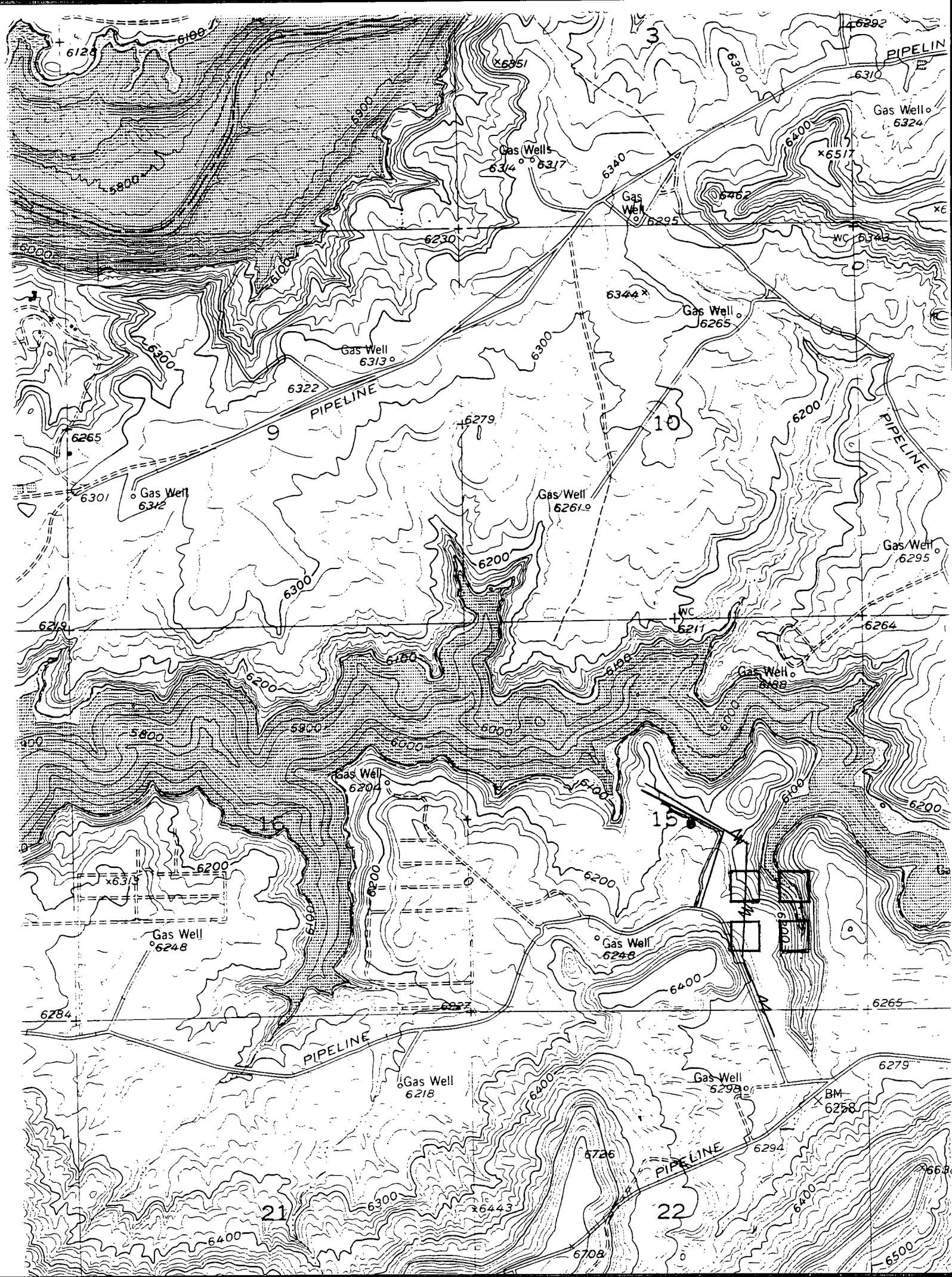
Sincerely,

A handwritten signature in cursive script, appearing to read "Peggy Bradfield".

Peggy Bradfield
Regulatory/Compliance Administrator

encs.





**BURLINGTON RESOURCES
OIL AND GAS COMPANY****DRILLING DEPARTMENT**

3535 EAST 30TH STREET. FARMINGTON, NM 87402

P.O. BOX 4289. FARMINGTON, NM 87499

(505) 326-9700 FAX: (505) 326-9563

2:08 PM

30-6 #83-A

DATE: 10-18-96

TO:

Michael Hogner

COMPANY:

NUOCD

TELECOPIER:

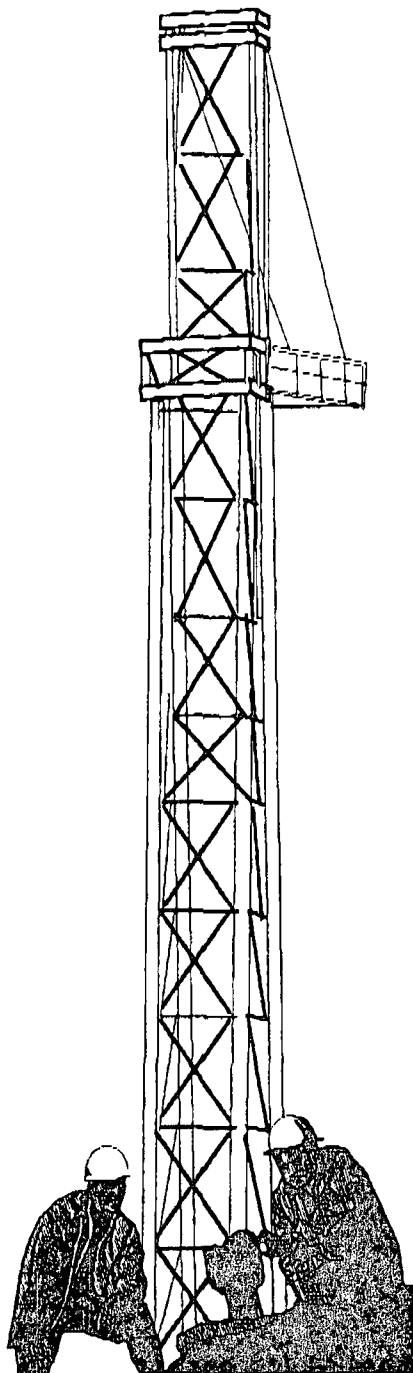
827-8177

FROM:

PeggyNO. OF PAGES (including cover): 2

COMMENTS:

Michael, here is
Devon's waiver for my
eagle nesting well. Thanks
for your help!



**BURLINGTON
RESOURCES**

SAN JUAN DIVISION

October 4, 1996

Sent Federal Express

Mr. William LeMay
New Mexico Oil Conservation Division
2040 South Pacheco
Santa Fe, New Mexico 87505

Re: San Juan 30-6 Unit #83A
2530'FSL, 2315'FEL Section 15, T-30-N, R-7-W, Rio Arriba County, New Mexico
API # 30-039-(not yet assigned)

Dear Mr. LeMay:

Burlington Resources is applying for administrative approval of a non-standard location for the above location in the Mesa Verde formation. This application for the referenced location is due to terrain, the presence of archaeology, power lines and pipelines.

The following attachments are for your review:

1. Application for Permit to Drill.
2. Completed C-102 at referenced location.
3. Offset operators/owners plat
4. 7.5 minute topographic map showing the orthodox windows, and enlargement of the map to define topographic features.

A copy of this application is being submitted to all offset owners/ operators by certified mail with a request that they furnish you with a Waiver of Objection, and return one copy to this office. In accordance with Rule 1207 A.5, all parties should be advised that if they have an objection, it must be filed in writing within twenty days from this date.

We appreciate your earliest consideration of this application.

Sincerely,


Peggy Bradfield
Regulatory/Compliance Representative
encs.

WAIVER

DEVON ENERGY CORPORATION (NEVADA) hereby waives objection to Burlington Resources' application for a non-standard location for their San Juan 30-6 Unit #83A as proposed above.

By:  Date: 10-18-96

PM

xc: Devon Energy Corp

DEVON ENERGY CORPORATION
20 N. BROADWAY, SUITE 1500
OKLAHOMA CITY, OK 73102-8262

OFFICE PHONE: (405) 235-3611
TELECOPIER: (405) 552-4550 or (405) 552-4667

FACSIMILE COVER SHEET

TO:

Michael Stogner

DATE:

10-18-96

COMPANY:

EOCD

PHONE:

FAX:

505 827-8177

FROM:

Bill Penhall

Devon Energy Corporation

NUMBER OF

PAGES FOLLOWING:

1

COMMENTS:

**BURLINGTON
RESOURCES**

SAN JUAN DIVISION

October 4, 1996

Sent Federal Express

Mr. William LeMay
New Mexico Oil Conservation Division
2040 South Pacheco
Santa Fe, New Mexico 87505

Re: San Juan 30-6 Unit #83A
2530'FSL, 2315'FEL Section 15, T-30-N, R-7-W, Rio Arriba County, New Mexico
API # 30-039-(not yet assigned)

Dear Mr. LeMay:

Burlington Resources is applying for administrative approval of a non-standard location for the above location in the Mesa Verde formation. This application for the referenced location is due to terrain, the presence of archaeology, power lines and pipelines.


The following attachments are for your review:

1. Application for Permit to Drill.
2. Completed C-102 at referenced location.
3. Offset operators/owners plat
4. 7.5 minute topographic map showing the orthodox windows, and enlargement of the map to define topographic features.

A copy of this application is being submitted to all offset owners/ operators by certified mail with a request that they furnish you with a Waiver of Objection, and return one copy to this office. In accordance with Rule 1207 A.5, all parties should be advised that if they have an objection, it must be filed in writing within twenty days from this date.

We appreciate your earliest consideration of this application.

Sincerely,


Peggy Bradfield
Regulatory/Compliance Representative
encs.

WAIVER

DEVON ENERGY CORPORATION (NEVADA) hereby waives objection to Burlington Resources' application for a non-standard location for their San Juan 30-6 Unit #83A as proposed above.

By: 

Date:

10-8-96

xc: Devon Energy Corp