



NSL

8/19/97

Texaco Exploration
and Production Inc

500 North Loraine
Midland TX 79701

P O Box 3109
Midland TX 79702

July 28, 1997

GOV - STATE AND LOCAL GOVERNMENTS

Unorthodox Location

Cotton Draw Unit Well No. 86

Paduca (Devonian) Field

Eddy County, New Mexico

State of New Mexico

Energy and Minerals Department

Oil Conservation Division

2040 South Pacheco

Santa Fe, New Mexico 87505

Attention: Mr. Michael E. Stogner

Gentlemen:

An Exception to Rule 104 F. III, by administrative approval, is requested for the captioned well. This well is located 2600' FSL & 1500' FEL, Unit Letter "J", of Section 12, T-25-S, R-31-E.

This well must be drilled in this location due to geological conditions. As seen on the attached map, structural closure on the Devonian horizon is centered in the NW/4 of Section 12. The proposed location is positioned to drill near the top of the structural closure, and as close as possible to the small east-west fault which runs through sections 12 and 7, while taking maximum advantage of indicated karst reservoir as interpreted from seismic data. Production from similar Devonian fields, Chapman Deep and Vermejo Moore Hooper, demonstrate the need to encounter the Devonian structurally high and in a location of good reservoir development to improve reservoir conditions.

Texaco Exploration & Production, Inc. is the Lessee of Record of the affected adjoining and diagonal spacing units. Attached is Form C-102.

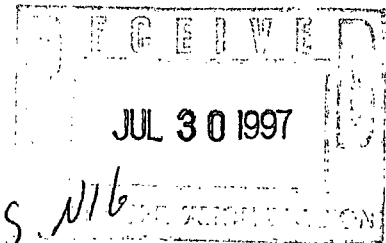
Yours very truly,

C. Wade Howard

C. W. Howard

Engineer Assistant

CWH Attachments cc: BLM, Roswell



DISTRICT I
P. O. Box 1980, Hobbs, NM 88240

DISTRICT II
P. O. Drawer DD, Artesia, NM 88210

DISTRICT III
1000 Rio Brazos Rd., Aztec, NM 87410

DISTRICT IV
P. O. Box 2088, Santa Fe, NM 87504-2088

State of New Mexico
Energy, Minerals and Natural Resources Department

OIL CONSERVATION DIVISION

PO Box 2088
Santa Fe, NM 87504-2088

Form C-102
Revised February 10, 1994

Instructions on back

Submit to Appropriate District Office

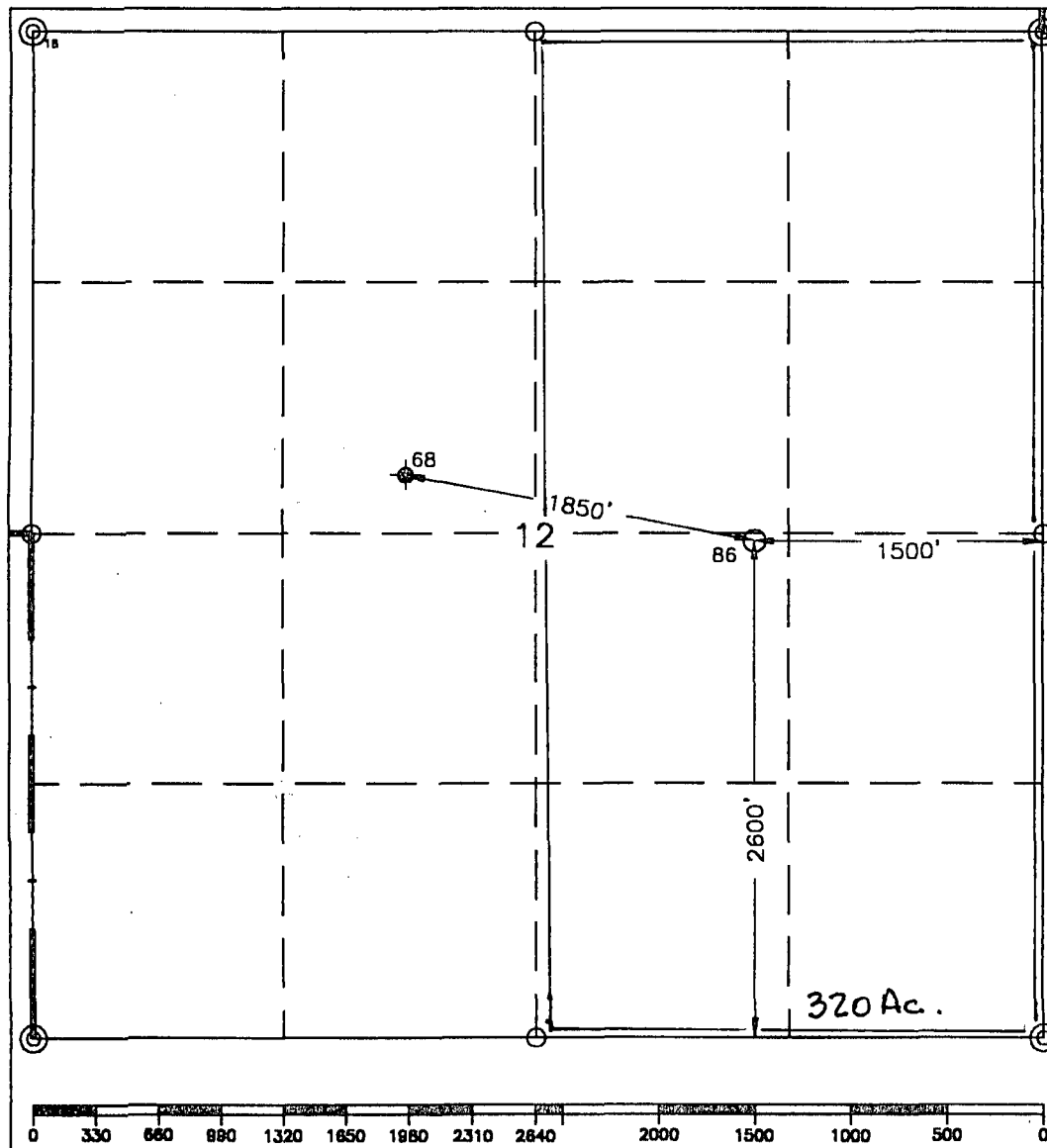
State Lease-4 copies
Fee Lease-3 copies

☐ AMENDED REPORT

WELL LOCATION AND ACREAGE DEDICATION PLAT

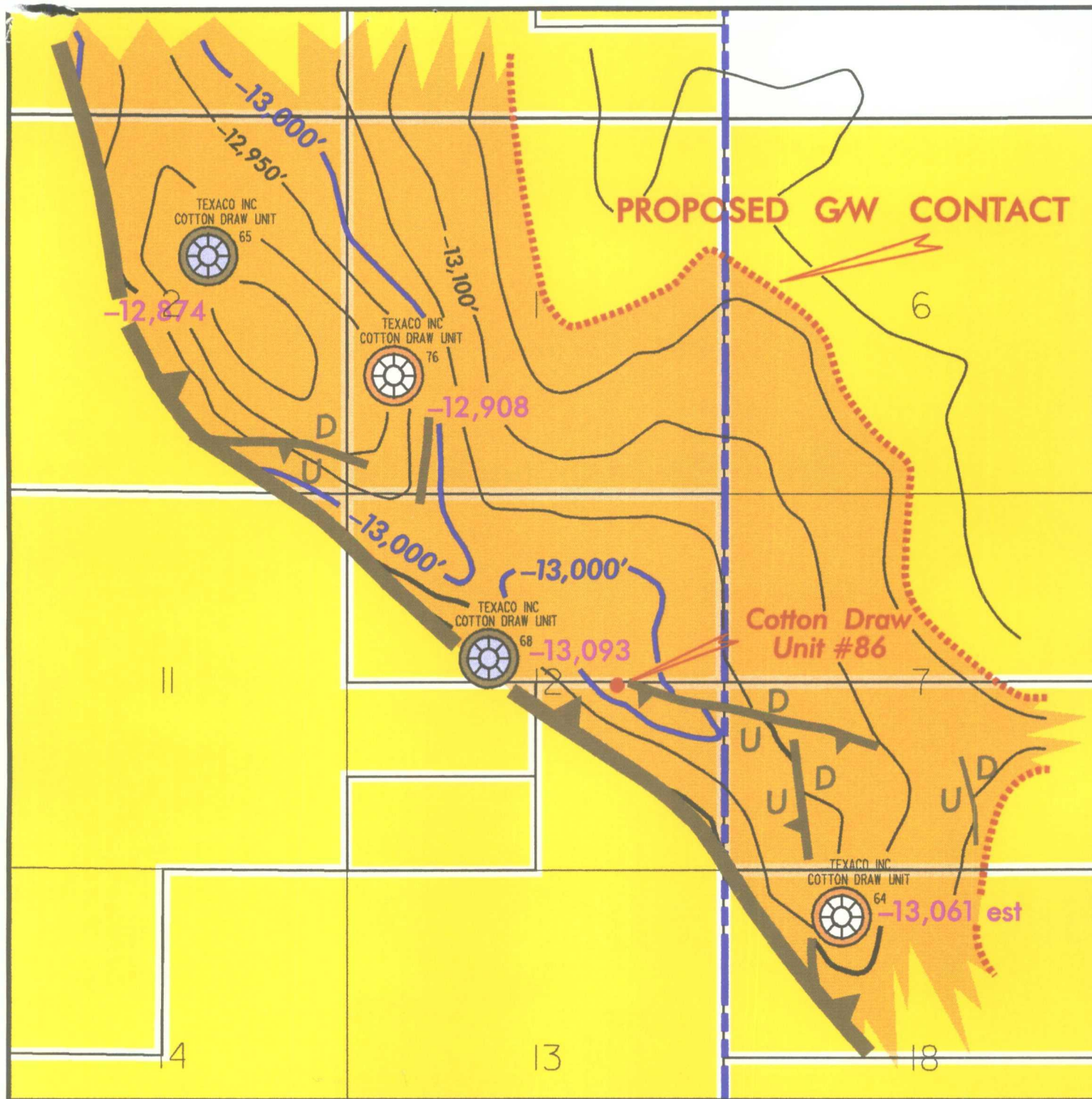
¹ API Number		² Pool Code		³ Pool Name Paduca, Devonian					
⁴ Property Code 10920		⁵ Property Name Cotton Draw Unit				⁶ Well Number 86			
⁷ GRID No. 22351		⁸ Operator Name TEXACO EXPLORATION & PRODUCTION, INC.				⁹ Elevation 3421'			
¹⁰ Surface Location									
UL or lot no. J	Section 12	Township 25-S	Range 31-E	Lot Idn	Feet from the 2600'	North/South line South	Feet from the 1500'	East/West line East	⁷ County Eddy
¹¹ Bottom Hole Location If Different From Surface									
UL or lot no.	Section	Township	Range	Lot Idn	Feet from the	North/South line	Feet from the	East/West line	⁷ County
¹² Dedicated Acres 320		¹³ Joint or Infill		¹⁴ Consolidation Code		¹⁵ Order No.			

NO ALLOWABLE WILL BE ASSIGNED TO THIS COMPLETION UNTIL ALL INTERESTS HAVE BEEN CONSOLIDATED
OR A NON-STANDARD UNIT HAS BEEN APPROVED BY THE DIVISION.



¹⁶ OPERATOR CERTIFICATION	
I hereby certify that the information contained herein is true and complete to the best of my knowledge and belief.	
Signature <i>C. Wade Howard</i>	
Printed Name C. Wade Howard	
Position Engineer's Assistant	
Company Texaco Expl. & Prod. Inc.	
Date July 15, 1997	
¹⁷ SURVEYOR CERTIFICATION	
I hereby certify that the well location shown on this plat was plotted from field notes of actual surveys made by me or under my supervision, and that the same is true and correct to the best of my knowledge and belief.	
Date Surveyed July 10, 1997	
Signature & Seal of Professional Surveyor <i>John S. Piper</i>	
Certificate No. 7254 John S. Piper	
Sheet 8 of 8	

○ = Staked Location ● = Producing Well = Injection Well = Water Supply Well = Plugged & Abandon Well



LEGEND

- TEXACO LEASEHOLD
- PROSPECT AREA
- DEVONIAN PRODUCTION
- DEVONIAN PENETRATION

TEXACO E & P INC. WESTERN E & P REGION AREA			
COTTON DRAW DEVONIAN STRUCTURE MAP EDDY AND LEA COUNTIES NEW MEXICO STRUCTURE BASE WOODFORD CONTOUR INTERVAL = 50'			
CONT. INT.: 50' DATUM: BASE WOODFORD DATE: JUNE 1994 REV. DATE: JUNE 1997		GEOSCIENTIST: W. R. M. & T. M. S. ENGINEER: J. R. D. LANDMAN: D. L. S.	



Texaco Exploration
and Production Inc

500 North Lorena
Midland TX 79701

P.O. Box 3109
Midland TX 79701

July 28, 1997

GOV - STATE AND LOCAL GOVERNMENTS

Unorthodox Location
Cotton Draw Unit Well No. 86
Paduca (Devonian) Field
Eddy County, New Mexico

State of New Mexico
Energy and Minerals Department
Oil Conservation Division
2040 South Pacheco
Santa Fe, New Mexico 87505

Attention: Mr. Michael E. Stogner

Gentlemen:

An Exception to Rule 104 F. III, by administrative approval, is requested for the captioned well. This well is located 2600' FSL & 1500' FEL, Unit Letter "J", of Section 12, T-25-S, R-31-E.

This well must be drilled in this location due to geological conditions. As seen on the attached map, structural closure on the Devonian horizon is centered in the NW/4 of Section 12. The proposed location is positioned to drill near the top of the structural closure, and as close as possible to the small east-west fault which runs through sections 12 and 7, while taking maximum advantage of indicated karst reservoir as interpreted from seismic data. Production from similar Devonian fields, Chapman Deep and Vermejo Moore Hooper, demonstrate the need to encounter the Devonian structurally high and in a location of good reservoir development to improve reservoir conditions.

Texaco Exploration & Production, Inc. is the Lessee of Record of the affected adjoining and diagonal spacing units. Attached is Form C-102.

Yours very truly,

C. Wade Howard

C. W. Howard
Engineer Assistant

CWH Attachments cc: BLM, Roswell

DISTRICT I
P. O. Box 1980, Hobbs, NM 88240

DISTRICT II
P. O. Drawer DD, Artesia, NM 88210

DISTRICT III
1000 Rio Brazos Rd., Aztec, NM 87410

DISTRICT IV
P. O. Box 2088, Santa Fe, NM 87504-2088

State of New Mexico
Energy, Minerals and Natural Resources Department

OIL CONSERVATION DIVISION

PO Box 2088
Santa Fe, NM 87504-2088

Form C-102
Revised February 10, 1994

Instructions on back

Submit to Appropriate District Office

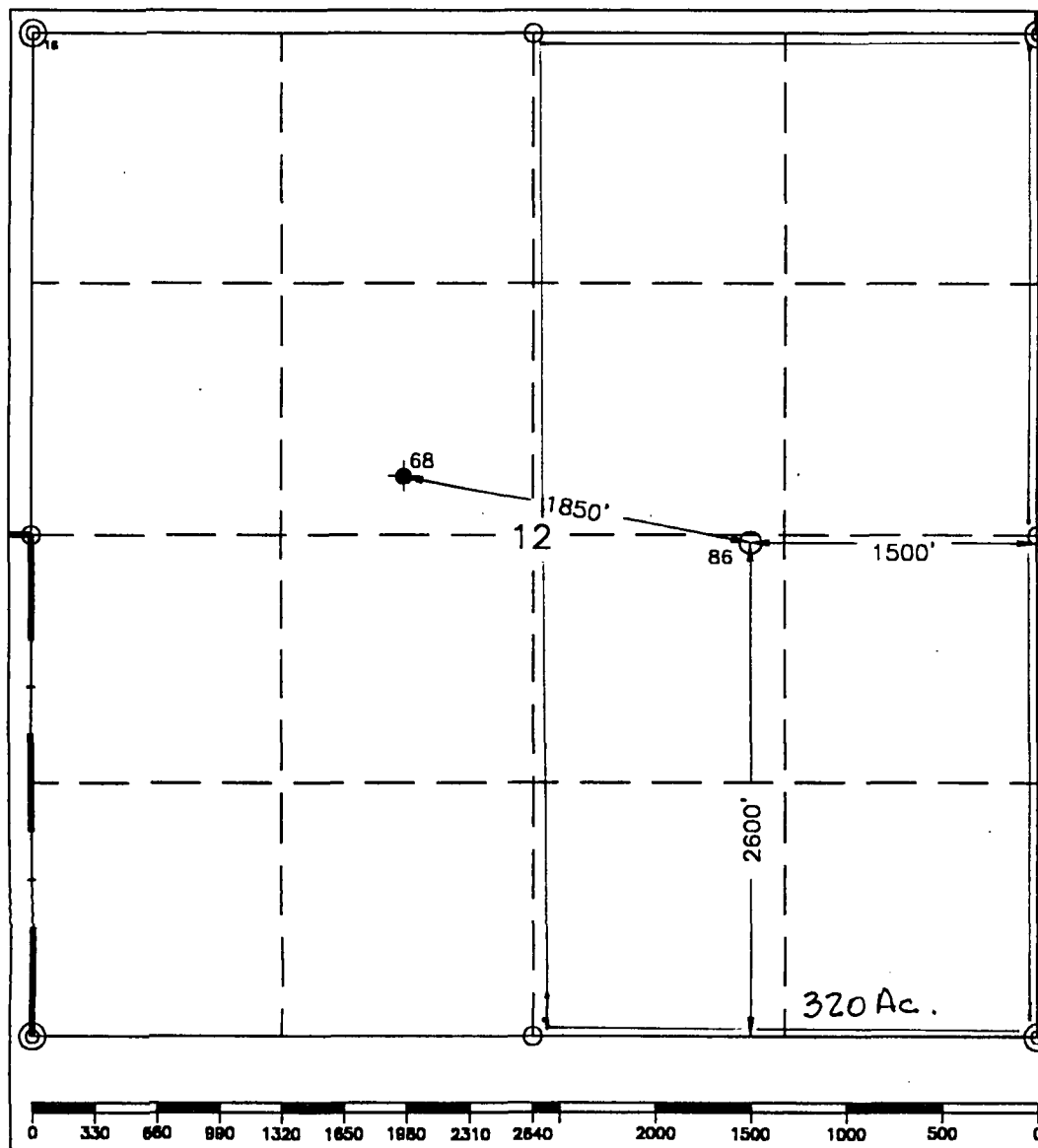
State Lease-4 copies
Fee Lease-3 copies

☐ AMENDED REPORT

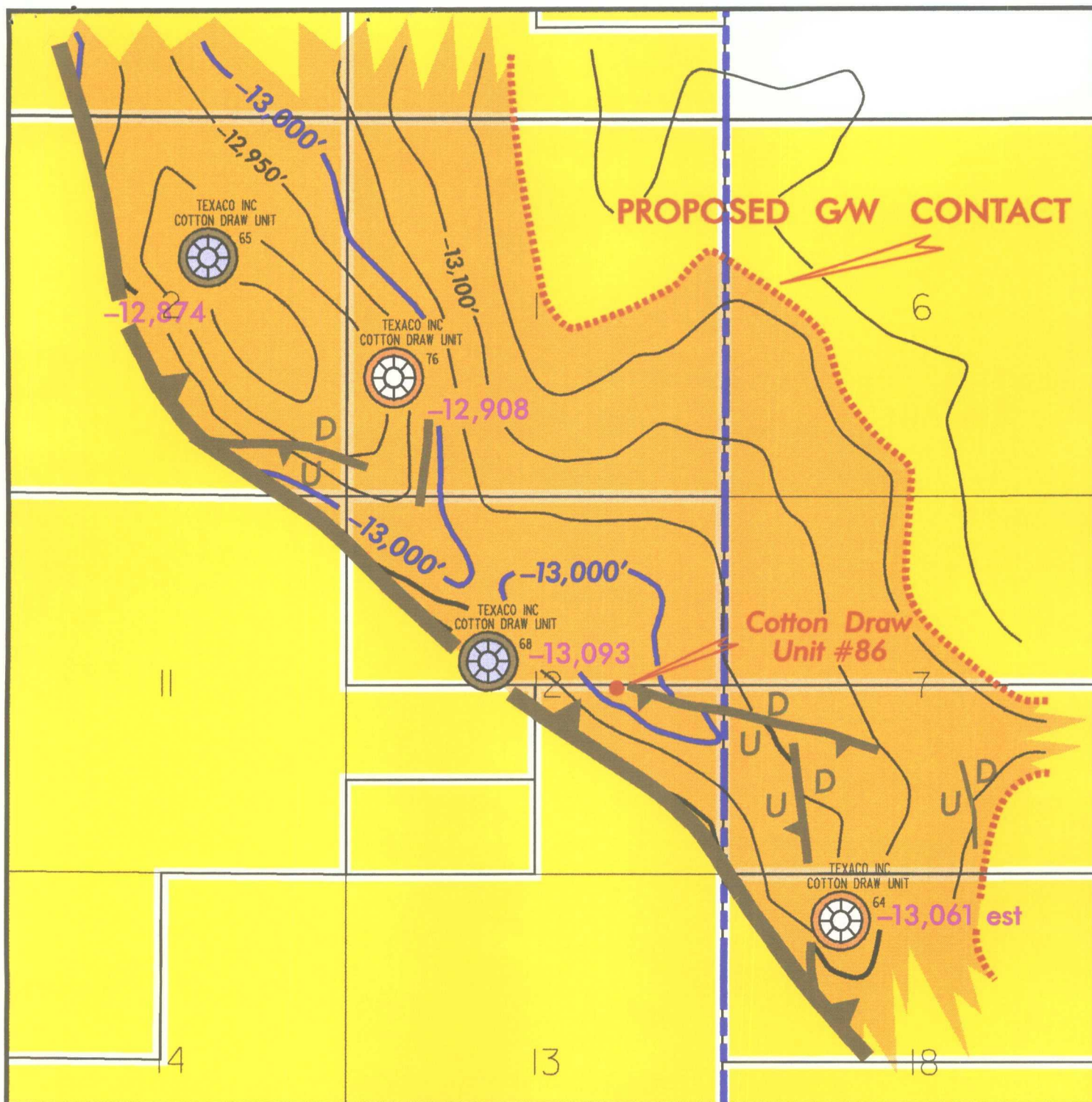
WELL LOCATION AND ACREAGE DEDICATION PLAT

¹ API Number		² Pool Code		³ Pool Name Paduca, Devonian					
⁴ Property Code 10920		⁵ Property Name Cotton Draw Unit						⁶ Well Number 86	
⁷ OGRID No. 22351		⁸ Operator Name TEXACO EXPLORATION & PRODUCTION, INC.						⁹ Elevation 3421'	
¹⁰ Surface Location									
UL or lot no. J	Section 12	Township 25-S	Range 31-E	Lot Idn	Feet from the 2600'	North/South line South	Feet from the 1500'	East/West line East	⁷ County Eddy
¹¹ Bottom Hole Location If Different From Surface									
UL or lot no.	Section	Township	Range	Lot Idn	Feet from the	North/South line	Feet from the	East/West line	⁷ County
¹² Dedicated Acres 320		¹³ Joint or Infill		¹⁴ Consolidation Code		¹⁵ Order No.			

NO ALLOWABLE WILL BE ASSIGNED TO THIS COMPLETION UNTIL ALL INTERESTS HAVE BEEN CONSOLIDATED
OR A NON-STANDARD UNIT HAS BEEN APPROVED BY THE DIVISION.



¹ OPERATOR CERTIFICATION	
I hereby certify that the information contained herein is true and complete to the best of my knowledge and belief.	
Signature <i>C. Wade Howard</i>	
Printed Name C. Wade Howard	
Position Engineer's Assistant	
Company Texaco Expl. & Prod. Inc.	
Date July 15, 1997	
¹⁶ SURVEYOR CERTIFICATION	
I hereby certify that the well location shown on this plat was plotted from field notes of actual surveys made by me or under my supervision, and that the same is true and correct to the best of my knowledge and belief.	
Date Surveyed July 10, 1997	
Signature & Seal of Professional Surveyor <i>John S. Piper</i>	
Certificate No. 7254 John S. Piper	
Sheet 8 of 8	



LEGEND

- TEXACO LEASEHOLD
- PROSPECT AREA
- DEVONIAN PRODUCTION
- DEVONIAN PENETRATION

TEXACO E & P INC.
WESTERN E & P REGION
AREA

**COTTON DRAW
DEVONIAN STRUCTURE MAP**

EDDY AND LEA COUNTIES
NEW MEXICO

STRUCTURE BASE WOODFORD
CONTOUR INTERVAL = 50'

CONT. INT.: 50'

DATUM: BASE WOODFORD

DATE: JUNE 1994

REV. DATE: JUNE 1997

GEOSCIENTIST: W. R. M. & T. M. S.

ENGINEER: J. R. D.

LANDMAN: D. L. S.

