

DATE IN 2/18/98	SUSPENSE 3/10/98	ENGINEER MS	LOGGED RW	TYPE NSL
--------------------	---------------------	----------------	--------------	-------------

ABOVE THIS LINE FOR DIVISION USE ONLY

NEW MEXICO OIL CONSERVATION DIVISION

- Engineering Bureau -

ADMINISTRATIVE APPLICATION COVERSHEET

THIS COVERSHEET IS MANDATORY FOR ALL ADMINISTRATIVE APPLICATIONS FOR EXCEPTIONS TO DIVISION RULES AND REGULATIONS

Application Acronyms:

[NSP-Non-Standard Proration Unit] [NSL-Non-Standard Location]
 [DD-Directional Drilling] [SD-Simultaneous Dedication]
 [DHC-Downhole Commingling] [CTB-Lease Commingling] [PLC-Pool/Lease Commingling]
 [PC-Pool Commingling] [OLS - Off-Lease Storage] [OLM-Off-Lease Measurement]
 [WFX-Waterflood Expansion] [PMX-Pressure Maintenance Expansion]
 [SWD-Salt Water Disposal] [IPI-Injection Pressure Increase]
 [EOR-Qualified Enhanced Oil Recovery Certification] [PPR-Positive Production Response]

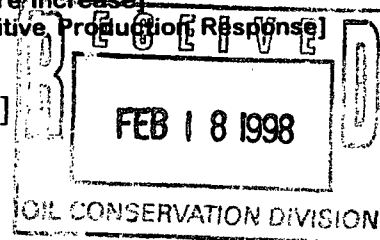
[1] TYPE OF APPLICATION - Check Those Which Apply for [A]

[A] Location - Spacing Unit - Directional Drilling
☒ NSL ☐ NSP ☐ DD ☐ SD

Check One Only for [B] and [C]

[B] Commingling - Storage - Measurement
☐ DHC ☐ CTB ☐ PLC ☐ PC ☐ OLS ☐ OLM

[C] Injection - Disposal - Pressure Increase - Enhanced Oil Recovery
☐ WFX ☐ PMX ☐ SWD ☐ IPI ☐ EOR ☐ PPR



[2] NOTIFICATION REQUIRED TO: - Check Those Which Apply, or ☐ Does Not Apply

[A] ☐ Working, Royalty or Overriding Royalty Interest Owners

[B] ☒ Offset Operators, Leaseholders or Surface Owner

[C] ☐ Application is One Which Requires Published Legal Notice

[D] ☒ Notification and/or Concurrent Approval by BLM or SLO
 U.S. Bureau of Land Management - Commissioner of Public Lands, State Land Office

[E] ☐ For all of the above, Proof of Notification or Publication is Attached, and/or,

[F] ☐ Waivers are Attached

[3] INFORMATION / DATA SUBMITTED IS COMPLETE - Statement of Understanding

I hereby certify that I, or personnel under my supervision, have read and complied with all applicable Rules and Regulations of the Oil Conservation Division. Further, I assert that the attached application for administrative approval is accurate and complete to the best of my knowledge and where applicable, verify that all interest (WI, RI, ORRI) is common. I understand that any omission of data, information or notification is cause to have the application package returned with no action taken.

Note: Statement must be completed by an individual with supervisory capacity.

Peggy Bradfield

Print or Type Name

Signature

Regulatory/Compliance Administrator

Title

Date

2/16/98

BURLINGTON RESOURCES

SAN JUAN DIVISION

February 16, 1998

SENT FEDERAL EXPRESS

Ms. Lori Wrotenbery
New Mexico Oil Conservation Division
2040 South Pacheco
Santa Fe, New Mexico 87505

Re: San Juan 30-6 Unit #39A
1390'FSL, 760'FEL Section 13, T-30-N, R-6-W, Rio Arriba County
API # 30-039-not assigned

Dear Ms. Wrotenbery:

Burlington Resources is applying for administrative approval of an unorthodox gas well location for the Dakota pool. Approval was granted October 8, 1997 by the New Mexico Oil Conservation Division for NSL-3880 to drill and complete a well in the Mesa Verde pool at this location. It is now intended to drill and dually complete this well in both the Mesa Verde and Dakota pools. The original application for the referenced location was due to the terrain, LaJara Wash as shown on the topographic map, and an abundance of archaeology.

Production from the Basin Dakota pool is to be included in a 227.76 acre gas spacing and proration unit ("GPU") comprising of Lots 1 through 4 and the W/2 E/2 (E/2 equivalent) of Section 13, T-30-N, R-6-W, Rio Arriba County, New Mexico.

The following attachments are for your review:

- Application for Permit to Drill.
- Completed C-102 at referenced location.
- Offset operators/owners plat and certification.
- 7.5 minute topographic map showing the orthodox windows, and enlargement of the map to define topographic features.

Three copies of this application are being submitted to all offset owners/ operators by certified mail with a request that they furnish you with a Waiver of Objection, return one copy to this office, and retain one copy for their file.

We appreciate your earliest consideration of this application.

Sincerely,



Peggy Bradfield
Regulatory/Compliance Administrator

xc: NMOCD - Aztec District Office
Bureau of Land Management - Farmington

WAIVER


_____ hereby waives objection to Burlington Resources' application for a non-standard location for their San Juan 30-6 Unit #39A as proposed above.

By: _____ Date: _____

xc: Phillips Petroleum

UNITED STATES
DEPARTMENT OF THE INTERIOR
BUREAU OF LAND MANAGEMENT

APPLICATION FOR PERMIT TO DRILL, DEEPEN, OR PLUG BACK

1a.	Type of Work DRILL	5. Lease Number SF-080713 Unit Reporting Number
1b.	Type of Well GAS	6. If Indian, All. or Tribe
2.	Operator BURLINGTON RESOURCES Oil & Gas Company	7. Unit Agreement Name San Juan 30-6 Unit
3.	Address & Phone No. of Operator PO Box 4289, Farmington, NM 87499 (505) 326-9700	8. Farm or Lease Name San Juan 30-6 Unit 9. Well Number 39A
4.	Location of Well 1390' FSL, 760' FEL - NSL-3880 Latitude 36° 48.5, Longitude 107° 24.6	10. Field, Pool, Wildcat Blanco MV/Basin Dk 11. Sec., Twn, Rge, Mer. (NMPM) Sec 13, T-30-N, R-6-W API # 30-039-
14.	Distance in Miles from Nearest Town 7 miles to Gobernador	12. County RA 13. State NM
15.	Distance from Proposed Location to Nearest Property or Lease Line 760'	
16.	Acres in Lease	17. Acres Assigned to Well 320 E/2
18.	Distance from Proposed Location to Nearest Well, Drlg, Compl, or Applied for on this Lease 1800'	
19.	Proposed Depth 7840'	20. Rotary or Cable Tools Rotary
21.	Elevations (DF, FT, GR, Etc.) 6318' GR	22. Approx. Date Work will Start
23.	Proposed Casing and Cementing Program See Operations Plan attached	
24.	Authorized by:  Regulatory/Compliance Administrator	<u>4/17/98</u> Date

PERMIT NO. _____ APPROVAL DATE _____
APPROVED BY _____ TITLE _____ DATE _____

Archaeological Report submitted
Threatened and Endangered Species Report submitted
NOTE: This format is issued in lieu of U.S. BLM Form 3160-3

District I
PO Box 1980, Hobbs, NM 88241-1980

District II
PO Drawer 00, Artesia, NM 88211-0719

District III
1000 Rio Brazos Rd., Aztec, NM 87410

District IV
PO Box 2088, Santa Fe, NM 87504-2088

State of New Mexico
Energy, Minerals & Natural Resources Department

OIL CONSERVATION DIVISION
PO Box 2088
Santa Fe, NM 87504-2088

Form C
Revised February 21,
Instructions on
Submit to Appropriate District Office
State Lease - 4 Co
Fee Lease - 3 Co

☐ AMENDED REPORT

WELL LOCATION AND ACREAGE DEDICATION PLAT

1 API Number 30-039-		2 Pool Code 72319/71599		3 Pool Name Blanco Mesaverde/Basin Dakota	
4 Property Code 7469		5 Property Name SAN JUAN 30-6 UNIT			6 Well Number 39A
7 OGRID No. 14538		8 Operator Name BURLINGTON RESOURCES OIL & GAS COMPANY			9 Elevation 6318'

10 Surface Location

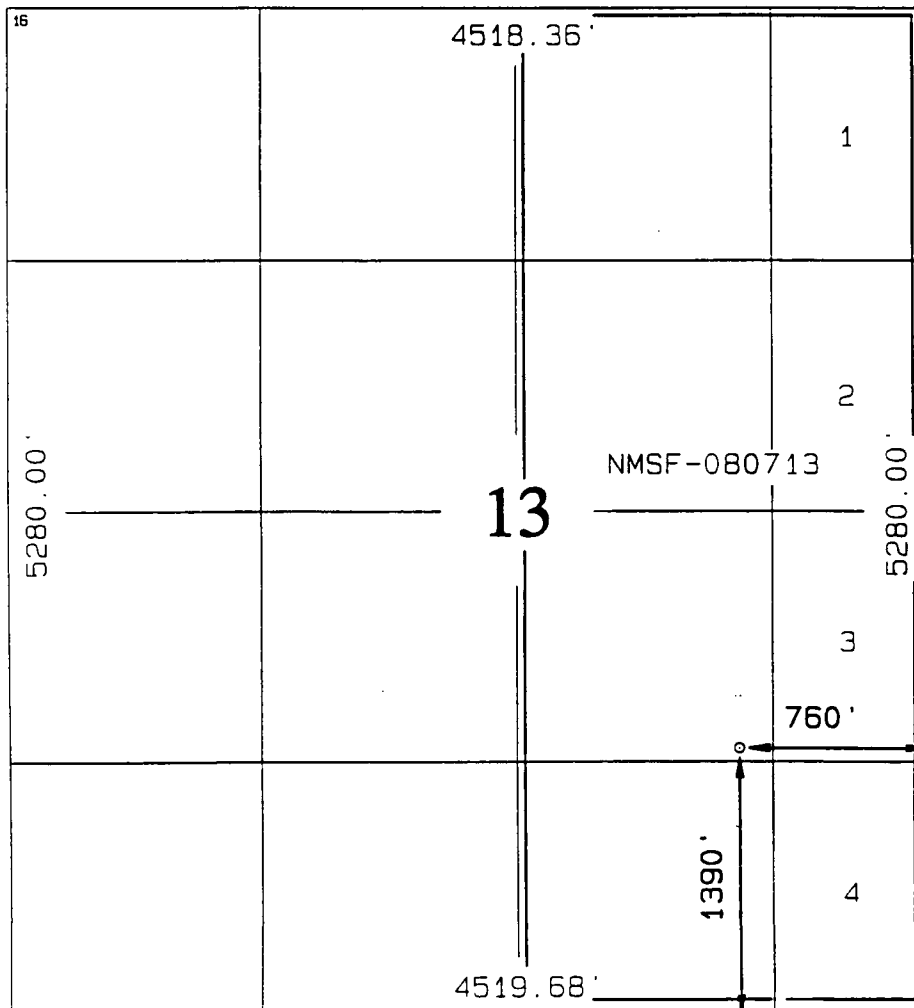
UL or lot no. J	Section 13	Township 30N	Range 6W	Lot Idn	Feet from the 1390	North/South line South	Feet from the 760	East/West line East	County RIO ARRI
--------------------	---------------	-----------------	-------------	---------	-----------------------	---------------------------	----------------------	------------------------	--------------------

11 Bottom Hole Location If Different From Surface

UL or lot no.	Section	Township	Range	Lot Idn	Feet from the	North/South line	Feet from the	East/West line	County
---------------	---------	----------	-------	---------	---------------	------------------	---------------	----------------	--------

12 Dedicated Acres MV-E/227.76 DK-E/227.76		13 Joint or Infill	14 Consolidation Code	15 Order No.
--	--	--------------------	-----------------------	--------------

NO ALLOWABLE WILL BE ASSIGNED TO THIS COMPLETION UNTIL ALL INTERESTS HAVE BEEN CONSOLIDATED OR A NON-STANDARD UNIT HAS BEEN APPROVED BY THE DIVISION



17 OPERATOR CERTIFICATE

I hereby certify that the information contained hereon is true and complete to the best of my knowledge and belief.

Signature

Peggy Bradfield

Printed Name

Regulatory Administrator

Title

2/11/98

Date

18 SURVEYOR CERTIFICATE

I hereby certify that the well location shown on this plat was plotted from field notes of actual surveys made or under my supervision and that the same is true and correct to the best of my belief.

JULY 10 1998

Date of Survey

Signature

NEALE C. EDWARDS

REGISTERED PROFESSIONAL SURVEYOR

6857

6857

Certificate Number

OPERATIONS PLAN

Well Name: San Juan 30-6 Unit #39A
Location: 1390' FSL, 760' FEL Sec 13, T-30-N, R-6-W
Rio Arriba County, NM
Latitude 36° 48.5, Longitude 107° 24.6
Formation: Blanco Mesa Verde/Basin Dakota
Elevation: 6318' GL

<u>Formation Tops:</u>	<u>Top</u>	<u>Bottom</u>	<u>Contents</u>
Surface	San Jose	2385'	
Ojo Alamo	2385'	2740'	aquifer
Fruitland	2740'	3140'	gas
Pictured Cliffs	3140'	3332'	gas
Lewis	3332'	3991'	gas
Intermediate TD	3332'		
Huerfano Bentonite	3991'	4358'	gas
Chacra	4358'	5195'	
Massive Cliff House	5195'	5233'	gas
Menefee	5233'	5500'	gas
Massive Point Lookout	5500'	6050'	gas
Mancos	6050'	7100'	
Gallup	7100'	7520'	gas
Greenhorn	7520'	7805'	gas
Dakota	7805'		gas
TD (5 1/2" liner)	7840'		

Logging Program:

Cased hole - CBL - TD to 200' above TOC, GR/CNL across MV/Dk

Mud Program:

<u>Interval</u>	<u>Type</u>	<u>Weight</u>	<u>Vis.</u>	<u>Fluid Loss</u>
0- 200'	Spud	8.4-9.0	40-50	no control
200-3332'	LSND	8.4-9.0	30-60	no control
3332-7840'	Gas	n/a	n/a	n/a

Pit levels will be visually monitored to detect gain or loss of fluid control.

Casing Program (as listed, the equivalent, or better):

<u>Hole Size</u>	<u>Depth Interval</u>	<u>Csq. Size</u>	<u>Wt.</u>	<u>Grade</u>
12 1/4"	0' - 200'	9 5/8"	32.3#	WC-50
8 3/4"	0' - 3332'	7"	20.0#	J-55
6 1/4"	3232' - 7840'	5 1/2"	15.5#	K-55 flushjoint

A variance is requested from Onshore Order #2, III, B. The casing collar clearance in the 5 1/2" flushjoint/6 1/4" hole will be 0.375", a 0.047" variance.

Tubing Program:

0' - 7840' 2 3/8" 4.70# EUE

BOP Specifications, Wellhead and Tests:**Surface to Intermediate TD -**

11" 2000 psi minimum double gate BOP stack (Reference Figure #1). After nipple-up prior to drilling out surface casing, rams and casing will be tested to 600 psi for 30 minutes.

Intermediate TD to Total Depth -

11" 2000 psi minimum double gate BOP stack (Reference Figure #1). After nipple-up prior to drilling out intermediate casing, rams and casing will be tested to 1500 psi for 30 minutes.

Surface to Total Depth -

2" nominal, 2000 psi minimum choke manifold (Reference Figure #3).

Completion Operations -

7 1/16" 2000 psi double gate BOP stack (Reference Figure #2). After nipple-up prior to completion, pipe rams, casing and liner top will be tested to 2000 psi for 15 minutes.

Wellhead -

9 5/8" x 7" x 2 3/8" x 3000 psi tree assembly.

General -

- Pipe rams will be actuated once each day and blind rams will be actuated once each trip to test proper functioning.
- An upper kelly cock valve with handle available and drill string valves to fit each drill string will be available on the rig floors at all times.
- BOP pit level drill will be conducted weekly for each drilling crew.
- All BOP tests and drills will be recorded in daily drilling reports.
- Blind and pipe rams will be equipped with extension hand wheels.

Cementing:

9 5/8" surface casing - cement with 163 sx Class "B" cement with 1/4# flocele/sx and 2% calcium chloride (188 cu.ft. of slurry, 200% excess to circulate to surface). WOC 8 hrs. Test casing to 600 psi for 30 minutes.

Saw tooth guide shoe on bottom. Bowspring centralizers will be run in accordance with Onshore Order #2.

7" intermediate casing -

Lead w/266 sx Class "B" w/3% metasilicate, 10# gilsonite/sx and 1/2# flocele/sx. Tail w/90 sx 50/50 Class "B" Poz w/2% calcium chloride, 2% gel, 1/2# flocele/sx, 10# gilsonite/sx (876 cu.ft. of slurry, 75% excess to circulate to surface.) WOC minimum of 8 hours before drilling out intermediate casing. If cement does not circulate to surface, a CBL will be run during completion operations to determine TOC. Test casing to 1500 psi for 30 minutes.

Cement nose guide shoe on bottom with float collar spaced on top of shoe joint. Bowspring centralizers spaced every other joint off bottom, to the base of the Ojo Alamo at 2740'. Two turbolating centralizers at the base of the Ojo Alamo at 2740'. Bowspring centralizers spaced every fourth joint from the base of the Ojo Alamo to the base of the surface casing.

5 1/2" Production Liner -

Cement to cover minimum of 100' of 5 1/2" x 7" overlap. Cement with 233 sx 50/50 Class "B" Poz with 2% gel, 1/4# flocele/sx, 5# gilsonite/sx, and 0.4% fluid loss additive (310 cu.ft., 40% excess to cement 5 1/2" x 7" overlap). WOC a minimum of 18 hrs prior to completing.

Cement float shoe on bottom with float collar spaced on top of shoe joint.

Note: To facilitate higher hydraulic stimulation completion work, no liner hanger will be used. Instead, a long string of 5 1/2" casing will be run and cemented with a minimum of 100' of cement overlap between the 5 1/2" x 7" casing strings. After completion of the well, a 5 1/2" CIBP will be set above the last fracturing job to cut and pull the 5 1/2" casing above the 7" casing shoe. The 5 1/2" bridge plug will then be milled and the two strings of tubing will be run for a dual completion.

Special Drilling Operations (Gas/Mist Drilling):

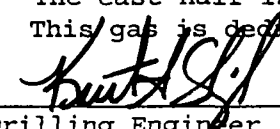
The following equipment will be operational while gas/mist drilling:

- An anchored blooie line will be utilized to discharge all cuttings and circulating medium to the blow pit a minimum of 100' from the wellhead.
- The blooie line will be equipped with an automatic igniter or pilot light.
- Compressors will be located a minimum of 100' from the wellhead in the opposite direction from the blooie line.
- Engines will have spark arresters or water cooled exhaust.
- Deduster equipment will be utilized.
- The rotating head will be properly lubricated and maintained.
- A float valve will be utilized above the bit.
- Mud circulating equipment, water, and mud materials will be sufficient to maintain control of the well.

Additional Information:

- The Dakota and Mesa Verde formations will be completed and dualled.
- No abnormal temperatures or hazards are anticipated.
- Anticipated pore pressures are as follows:

Fruitland Coal	300 psi
Pictured Cliffs	500 psi
Mesa Verde	700 psi
Dakota	3000 psi
- Sufficient LCM will be added to the mud system to maintain well control, if lost circulation is encountered.
- The east half is dedicated to the Mesa Verde and Dakota in this well.
- This gas is dedicated.



Drilling Engineer

2/11/98

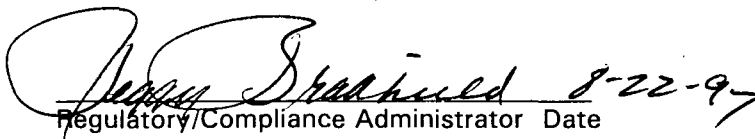
Date

BURLINGTON RESOURCES

San Juan 30-6 Unit #39A
Multi-Point Surface Use Plan

1. Existing Roads - Refer to Map No. 1. Existing roads used to access the proposed location will be properly maintained for the duration of the project. Bureau of Land Management right-of-way has been applied for as shown on Map No. 1.
2. Planned Access Road - Refer to Map No. 1. The required new access road is shown on Map No. 1. The gradient, shoulder, crowning and other design elements will meet or exceed those specified by the responsible government agency. The new access road surface will not exceed twenty feet (20') in width. No additional turnarounds or turnouts will be required. Upon completion of the project, the access road will be adequately drained to control soil erosion. Approximately 1900' of access road will be constructed. Pipelines are indicated on Map No. 1A.
3. Location of Existing Wells - Refer to Map No. 1A.
4. Location of Existing and/or Proposed Facilities if Well is Productive -
 - a. On the Well Pad - Refer to Plat No. 1, anticipated production facilities plat.
 - b. Off the Well Pad - Anticipated pipeline facilities as shown on the attached plat from Williams Field Service.
5. Location and Type of Water Supply - Water will be hauled by truck for the proposed project and will be obtained from LaJara Water Hole located SW/4 Section 11, T-30-N, R-6-W, New Mexico..
6. Source of Construction Materials - If construction materials are required for the proposed project, such materials will be obtained from a commercial quarry.
7. Methods of Handling Waste Materials - All garbage and trash materials will be removed from the site for proper disposal. A portable toilet will be provided for human waste and serviced in a proper manner. If liquids are left in the reserve pit after completion of the project, the pit will be fenced until the liquids have had adequate time to dry. The location clean-up will not take place until such time as the reserve pit can be properly covered over to prevent run-off from carrying waste materials into the watershed. Reserve pits will be lined as needed with either 12 mil bio-degradable plastic liner or a bentonite liner. All earthen pits will be so constructed as to prevent leakage from occurring; no earthen pit will be located on natural drainage. Generation of hazardous waste is not anticipated. Federal regulations will be adhered to regarding handling and disposal of such waste if so generated.
8. Ancillary Facilities - None anticipated.
9. Wellsite Layout - Refer to the location diagram and to the wellsite cut and fill diagram (Figure No. 4). The blow pit will be constructed with a 2'/160' grade to allow positive drainage to the reserve pit and prevent standing liquids in the blow pit.

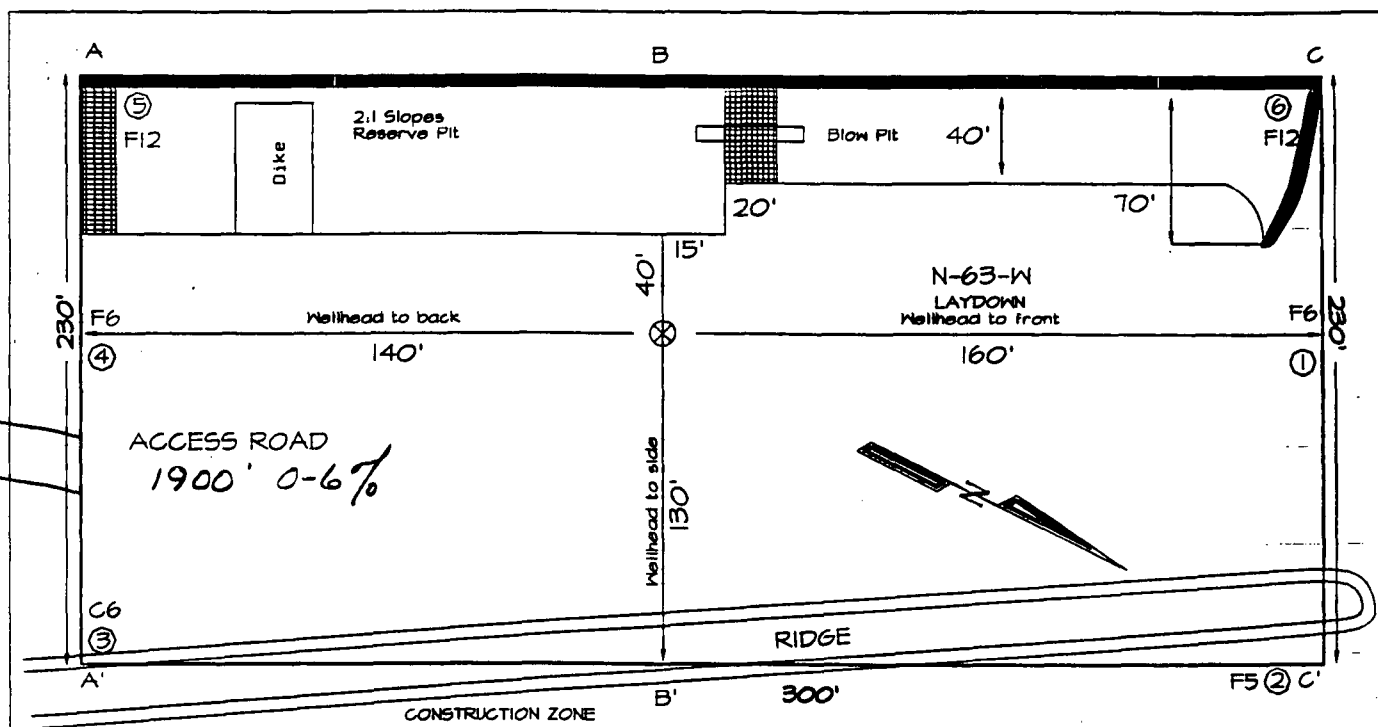
10. Plans for Restoration of the Surface - After completion of the proposed project, the location will be cleaned and leveled. The location will be left in such a condition that will enable reseeding operations to be carried out. Seed mixture as designated by the responsible government agency will be used. The reseeding operations will be performed during the time period set forth by the responsible government agency. The permanent location facilities will be painted as designated by the responsible government agency.
11. Surface Ownership - Gomez y Gomez
12. Other Information - Environmental stipulations as outlined by the responsible government agency will be adhered to. Refer to the archaeological report for a description of the topography, flora, fauna, soil characteristics, dwellings, historical and cultural sites.
13. Operator's Representative and Certification - Burlington Resources Oil & Gas Company Regional Drilling Manager, Post Office Box 4289, Farmington, NM 87499, telephone (505) 326-9700. I hereby certify that I, or persons under my direct supervision, have inspected the proposed drill site and access route; that I am familiar with the conditions which presently exist; that the statements made in this plan, are to the best of my knowledge, true and correct; and that the work associated with the operations proposed herein will be performed by Burlington Resources Oil and Gas Company and its contractors and subcontractors in conformity with this plan and the terms and conditions under which it is approved.


Regulatory/Compliance Administrator Date 8-22-97

pb

PLAT #1

BURLINGTON RESOURCES OIL & GAS COMPANY
SAN JUAN 30-6 UNIT #39A, 1390' FSL & 760' FEL
SECTION 13, T30N, R6W, NMPM, RIO ARriba COUNTY, NEW MEXICO
GROUND ELEVATION: 6318' DATE: JULY 10, 1997

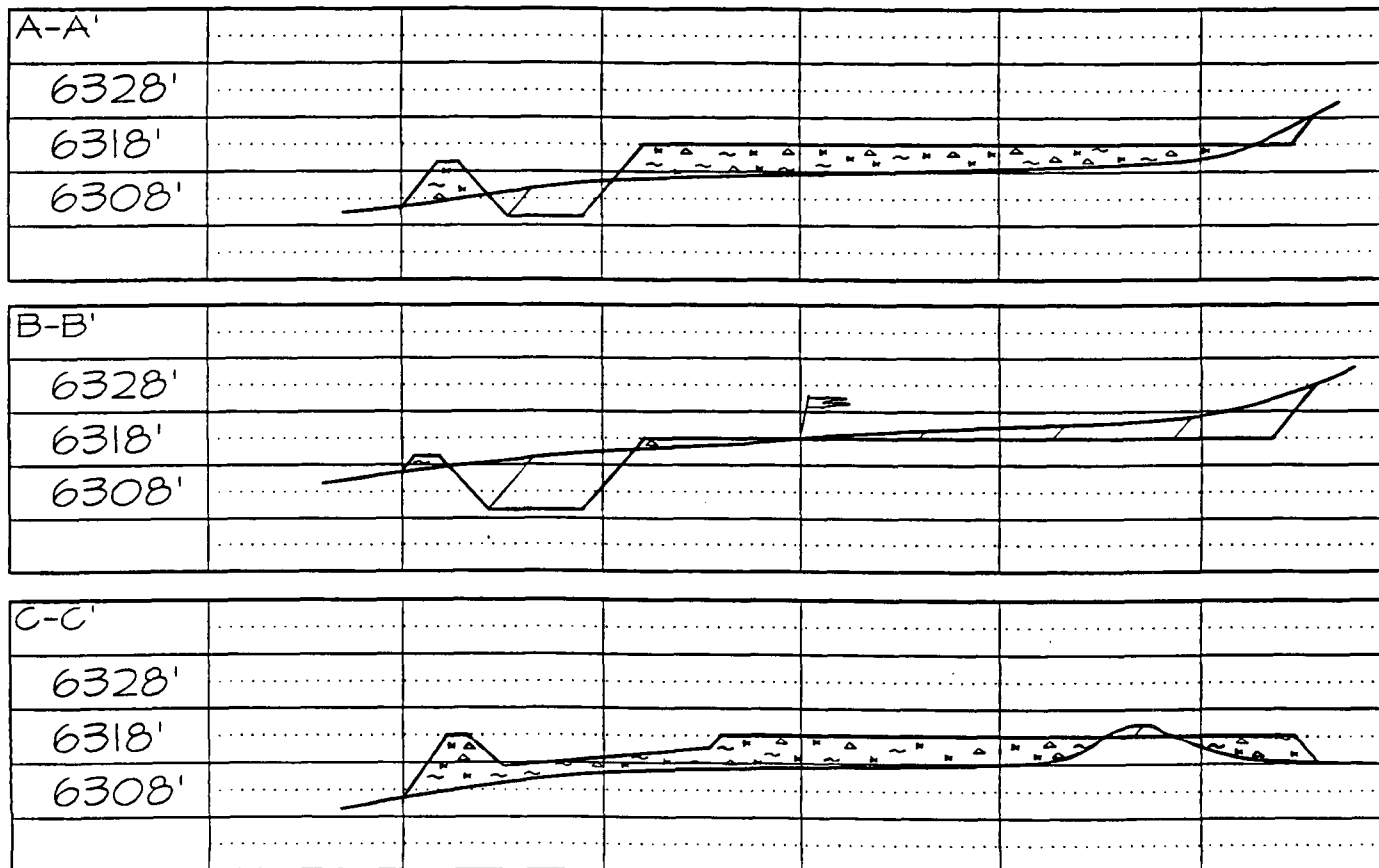


230' x 300'

(330' x 400') = 3.03 ACRES

Reserve Pit DiKe: to be 8' above Deep side (overflow - 3' wide and 1' above shallow side).

Blow Pit: overflow pipe halfway between top and bottom and to extend over plastic liner and into blow



Note: Contractor should call One-Call for location of any marked or unmarked buried pipelines or c on well pad and/or access road at least two (2) working days prior to construction

BURLINGTON RESOURCES OIL AND GAS COMPANY

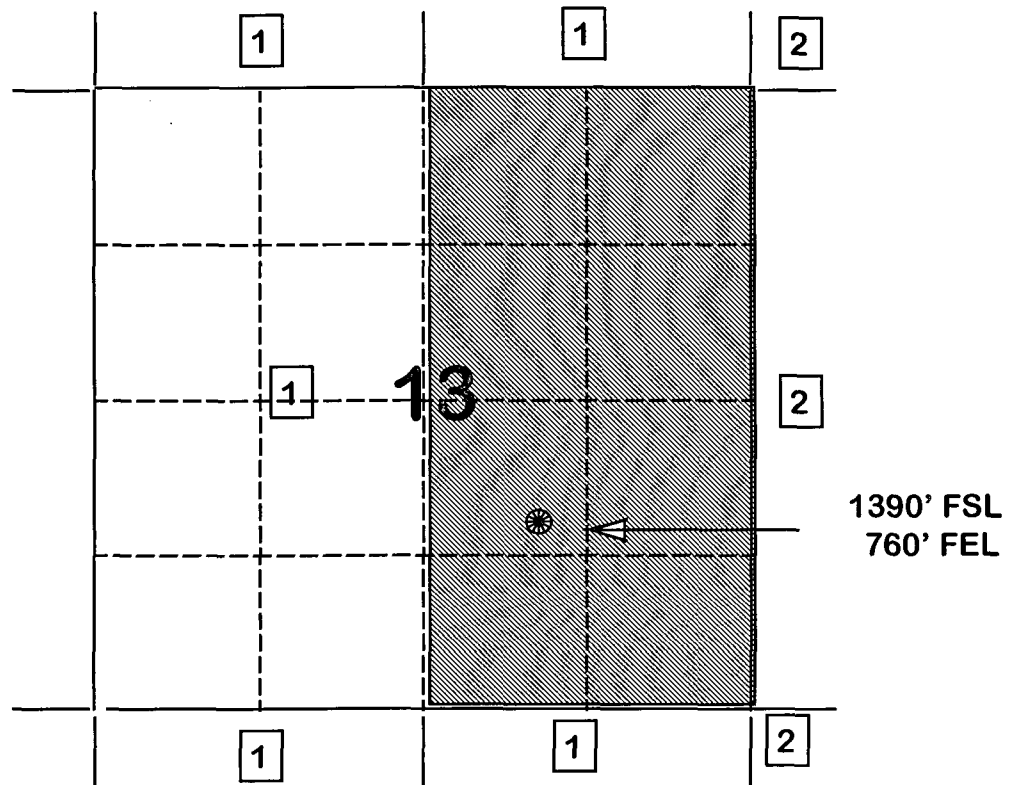
San Juan 30-6 Unit #39A

OFFSET OPERATOR \ OWNER PLAT

Non Standard Location

Dakota Formation Well

Township 30 North, Range 6 West



- 1) Burlington Resources
- 2) Phillips Petroleum Company
5525 Hwy 64, NBU 3004
Farmington, NM 87401

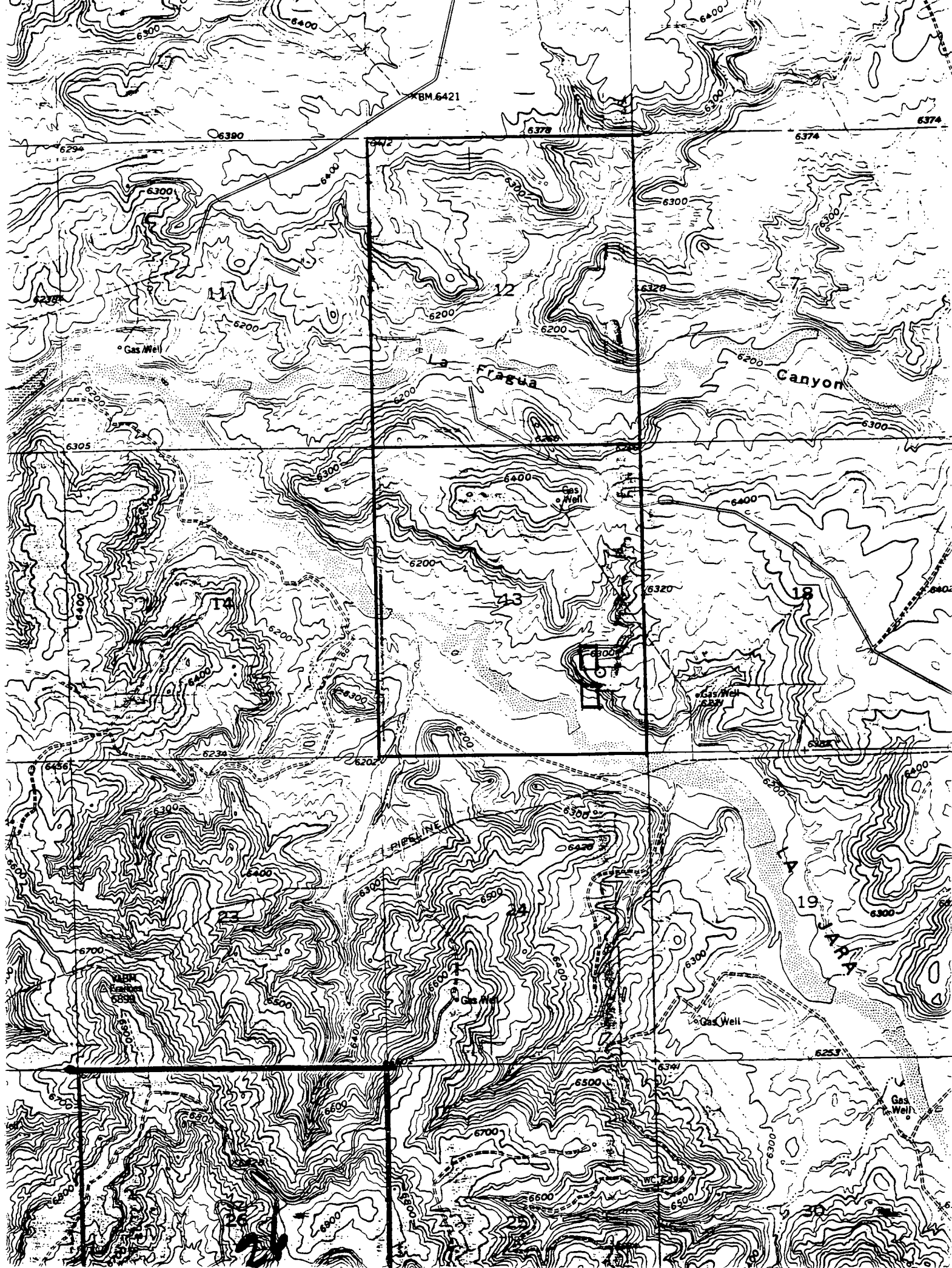
Re: San Juan 30-6 Unit #39A
1390'FSL, 760'FEL Section 13, T-30-N, R-6-W, Rio Arriba County
API # 30-039-not assigned

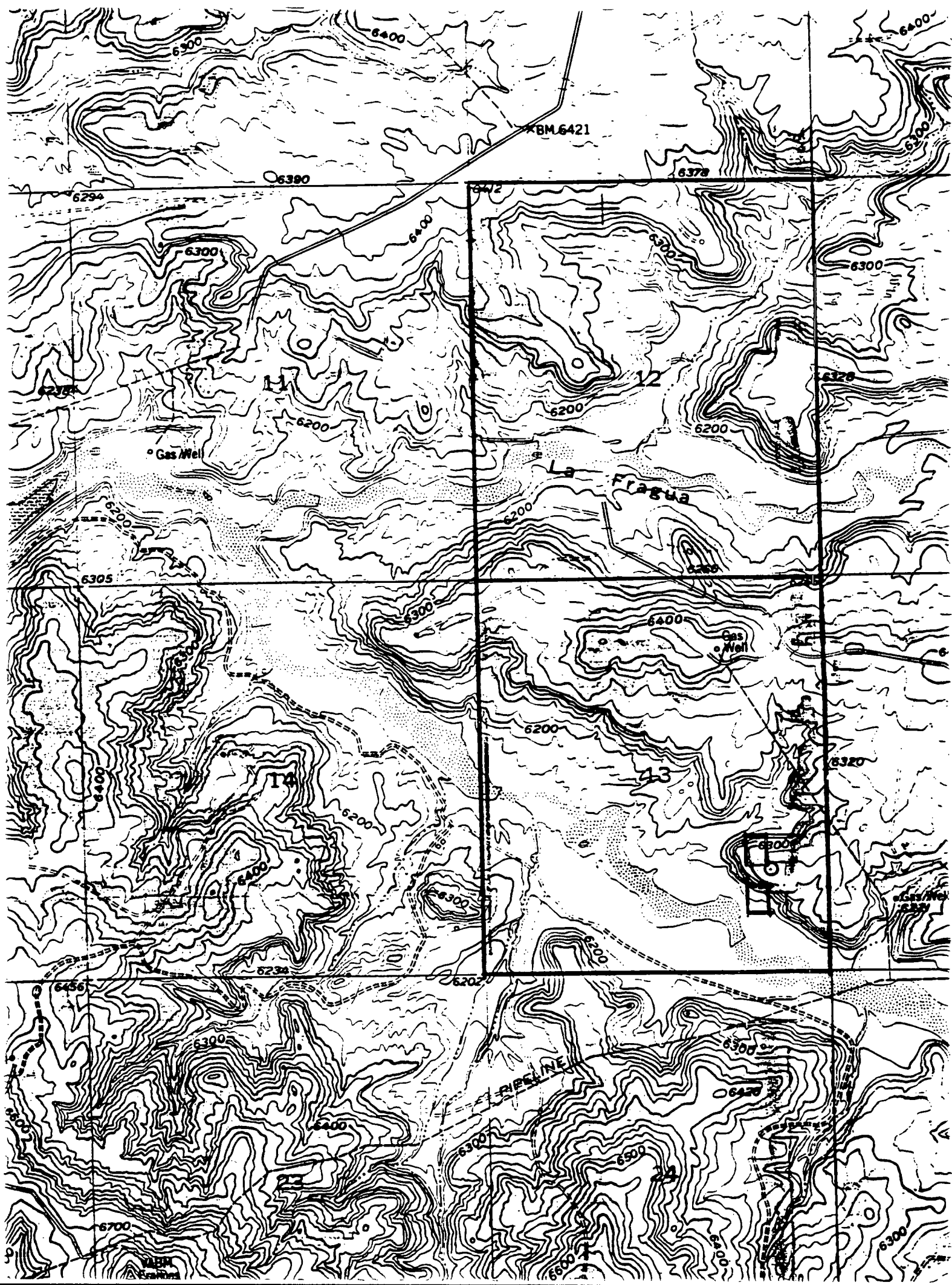
I hereby certify that the following offset operators/owners have been mailed notification of our application for non-standard location to drill the referenced well.

Phillips Petroleum
5525 Highway 64, NBU 3004
Farmington, NM 87401

A handwritten signature in cursive script, reading "Peggy Bradfield". The signature is written in black ink and is positioned above the printed name and title.

Peggy Bradfield
Regulatory/Compliance Administrator





NEW MEXICO ENERGY, MINERALS
& NATURAL RESOURCES DEPARTMENT

October 8, 1997

Burlington Resources Oil & Gas Company
P.O. Box 4289
Farmington, New Mexico 87499-4289
Attention: Peggy Bradfield

Administrative Order NSL-3880

Dear Ms. Bradfield:

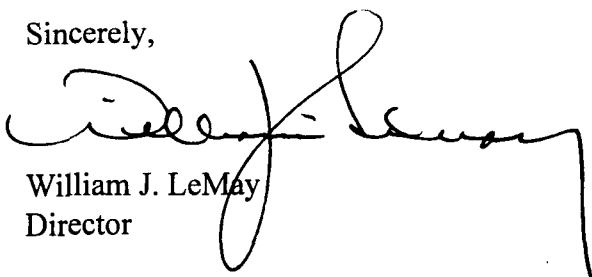
Reference is made to your application dated September 12, 1997 for an unorthodox Blanco-Mesaverde "infill" gas well location on an existing 227.76-acre gas spacing and proration unit ("GPU") for said Blanco-Mesaverde Pool, comprising Lots 1 through 4 and the W/2 E/2 (E/2 equivalent) of Section 13, Township 30 North, Range 6 West, NMPM, Rio Arriba County, New Mexico. Said GPU is currently dedicated to the San Juan "30-6" Unit Well No. 39 (API No. 30-039-07858), located at a standard gas well location 990 feet from the North line and 1450 feet from the East line (Unit B) of said Section 13.

By the authority granted me under the provisions of **Rule 2(d)** of the "*General Rules for the Prorated Gas Pools of New Mexico/Special Rules and Regulations for the Blanco-Mesaverde Pool*", as promulgated by Division Order No. R-8170, as amended, the following described well to be drilled at an unorthodox "infill" gas well location in said Section 13 is hereby approved:

San Juan "30-6" Unit Well No. 39-A
1390' FSL - 760' FEL (Unit J)

Further, both the San Juan "30-6" Unit Well Nos. 39 and 39-A are to be dedicated to the subject GPU, further said wells and GPU will be subject to all existing rules, regulations, policies, and procedures applicable to prorated gas pools in Northwest New Mexico.

Sincerely,



William J. LeMay
Director

WJL/MES/kv

cc: Oil Conservation Division - Aztec
U. S. Bureau of Land Management - Farmington
