

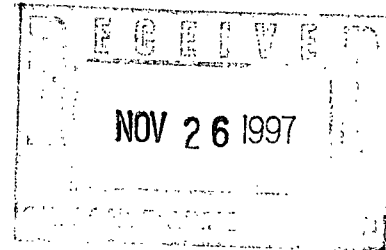
NSL 12/16/97

BURLINGTON RESOURCES

SAN JUAN DIVISION

November 25, 1997

Mr. William LeMay
New Mexico Oil Conservation Division
2040 South Pacheco
Santa Fe, New Mexico 87505



Re: Jaquez #1A
1620'FNL, 1195'FWL Section 6, T-31-N, R-8-W, San Juan County
API # 30-045-29494

Dear Mr. LeMay:

Burlington Resources is applying for administrative approval of an unorthodox "infill" gas well location for the Mesa Verde pool. This application for the referenced location is due to extremely steep terrain; therefore, this well is located in the canyon bottom.

Production from the Blanco Mesa Verde pool is to be included in an existing 332.94 gas spacing and proration unit comprising Lots 3-7, SE/4 NW/4 Section 6; Lots 1 and 2, Section 7; E/2 SW/4 Section 6; E/2 NW/4 Section 7; which is currently dedicated to Burlington Resources' Jaquez #1 (API 30-045-10999), located at a standard gas well location of 1020'FSL, 1160'FWL (Unit N) of said Section 6. Attached is Order R-9315 dated October 9, 1990 covering the non-standard gas proration unit.

The following attachments are for your review:

1. Application for Permit to Drill.
2. Completed C-102 at referenced location.
3. Offset operators/owners plat and certification.
4. 7.5 minute topographic map showing the orthodox windows, and enlargement of the map to define topographic features.

We appreciate your earliest consideration of this application.

Sincerely,


Peggy Bradfield
Regulatory/Compliance Administrator

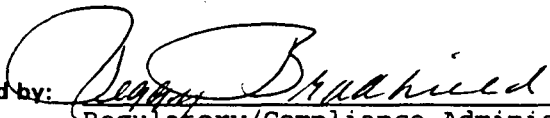
xc: NMOCD - Aztec District Office
Bureau of Land Management - Farmington

UNITED STATES
DEPARTMENT OF THE INTERIOR
BUREAU OF LAND MANAGEMENT

RECEIVED
007 - 0 1997 12

APPLICATION FOR PERMIT TO DRILL, DEEPEN, OR PLUG BACK

OIL & GAS

1a. Type of Work DRILL	57 AUG 22 11:11-33 070 FARMINGTON, NM	5. Lease Number SF-078510 Unit Reporting Number
1b. Type of Well GAS		6. If Indian, All. or Tribe
2. Operator BURLINGTON RESOURCES 14538 Oil & Gas Company		7. Unit Agreement Name
3. Address & Phone No. of Operator PO Box 4289, Farmington, NM 87499 (505) 326-9700		8. Farm or Lease Name 7156 Jaquez ✓ 9. Well Number 1A ✓
4. Location of Well 1620' FNL, 1195' FWL ✓ Latitude 36° 54.9, Longitude 107° 42.2		10. Field, Pool, Wildcat 72319 Blanco Mesa Verde ✓ 11. Sec., Twn, Rge, Mer. (NMPM) F Sec-6, T-31-N, R-8-W API # 30-045-29494 ✓
14. Distance in Miles from Nearest Town 8 miles to Abe's Store		12. County San Juan 13. State NM
15. Distance from Proposed Location to Nearest Property or Lease Line 1195'		
16. Acres in Lease		17. Acres Assigned to Well 332.94 ✓
18. Distance from Proposed Location to Nearest Well, Drlg, Compl, or Applied for on this Lease 1500'		
19. Proposed Depth 5761 This action is subject to technical and procedural review pursuant to 43 CFR 3165.3 and appeal pursuant to 43 CFR 3165.4.		20. Rotary or Cable Tools Rotary
21. Elevations (DF, FT, GR, Etc.) 6169' GR		22. Approx. Date Work will Start DRILLING OPERATIONS AUTHORIZED ARE SUBJECT TO COMPLIANCE WITH ATTACHED "GENERAL REQUIREMENTS"
23. Proposed Casing and Cementing Program See Operations Plan attached		
24. Authorized by:  Regulatory/Compliance Administrator		8-15-97 Date

PERMIT NO. _____ APPROVAL DATE OCT 08 1997
APPROVED BY _____ TITLE _____ DATE _____

Archaeological Report to be submitted
Threatened and Endangered Species Report to be submitted
NOTE: APD approved in this 1/4 section 08-08-84, resubmitted for this well in this 1/4 Section 01-23-92

HOLD C-104 FOR NSL @
R-9315 (NSL)

NMOCD

1980. Hobbs, NM 88241-1980

State of New Mexico
Energy, Minerals & Natural Resources Department

Form C-102
Revised February 21, 1994
Instructions on back
Submit to Appropriate District Office
State Lease - 4 Copies
Fee Lease - 3 Copies

District II
Drawer DD, Artesia, NM 88211-0719
District III
1000 Rio Brazos Rd., Aztec, NM 87410

District IV
PO Box 2088, Santa Fe, NM 87504-2088

OIL CONSERVATION DIVISION
PO Box 2088
Santa Fe, NM 87504-2088

☐ AMENDED REPORT

RECEIVED
JUL 22 AM 11:32
BURLINGTON, NM

WELL LOCATION AND ACREAGE DEDICATION PLAT

*API Number 30-045-29494		*Pool Code 72319	*Pool Name Blanco Mesaverde
*Property Code 7156	*Property Name JAQUEZ		*Well Number 1A
*GRID No. 14538	*Operator Name BURLINGTON RESOURCES OIL & GAS COMPANY		*Elevation 6169'

10 Surface Location

UL or lot no.	Section	Township	Range	Lot Idn	Feet from the	North/South line	Feet from the	East/West line	County
F	6	31N	8W		1620	North	1195	West	SAN JUAN

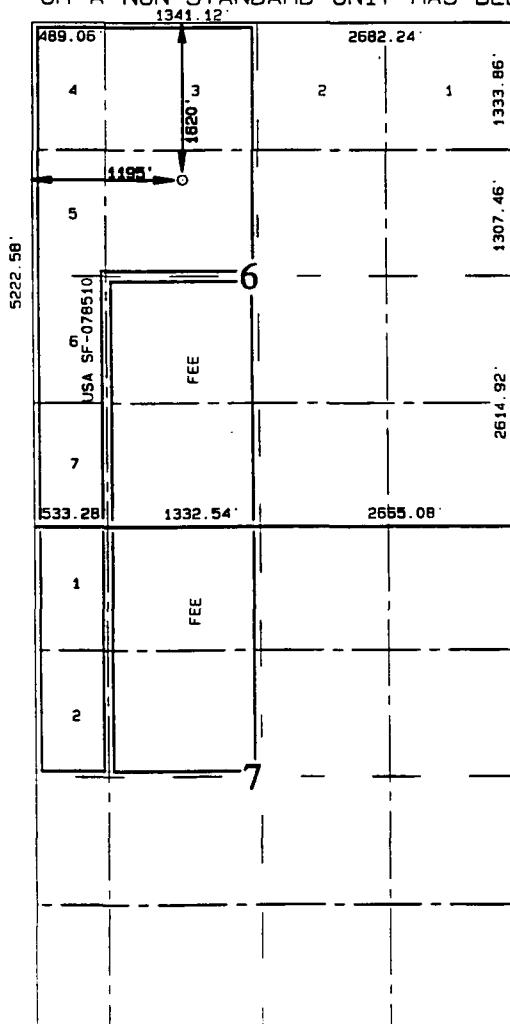
11 Bottom Hole Location If Different From Surface

UL or lot no.	Section	Township	Range	Lot Idn	Feet from the	North/South line	Feet from the	East/West line	County

12 Dedicated Acres 332.94	13 Joint or Infill	14 Consolidation Code	15 Order No.
------------------------------	--------------------	-----------------------	--------------

NO ALLOWABLE WILL BE ASSIGNED TO THIS COMPLETION UNTIL ALL INTERESTS HAVE BEEN CONSOLIDATED OR A NON-STANDARD UNIT HAS BEEN APPROVED BY THE DIVISION

16



17 OPERATOR CERTIFICATION

I hereby certify that the information contained herein is true and complete to the best of my knowledge and belief

Peggy Bradfield
Signature

Peggy Bradfield

Printed Name
Regulatory Administrator

Title
8-22-97

Date

18 SURVEYOR CERTIFICATION

I hereby certify that the well location shown on this plat was plotted from field notes of actual surveys made by me or under my supervision and that the same is true and correct to the best of my belief.

JUNE 23, 1997
Date of Survey

Signature and Seal of Professional Surveyor

NEALE EDWARDS
NEW MEXICO
6857
REGISTERED PROFESSIONAL SURVEYOR

6857
Certificate Number

OPERATIONS PLAN

Well Name: Jaquez #1A
Location: 1620' FNL, 1195' FWL Section 6, T-31-N, R-8-W
Rio Arriba County, New Mexico
Latitude 36° 54.9, Longitude 107° 42.2
Formation: Blanco Mesa Verde
Elevation: 6169' GL

<u>Formation Tops:</u>	<u>Top</u>	<u>Bottom</u>	<u>Contents</u>
Surface	San Jose	1766'	aquifer
Ojo Alamo	1766'	2526'	aquifer
Fruitland	2526'	3066'	
Pictured Cliffs	3066'	3196'	gas
Lewis	3196'	3836'	gas
Intermediate TD	3296'		
Mesa Verde	3836'	3706'	gas
Chacra	3706'	5051'	gas
Massive Cliff House	5051'	5091'	gas
Menefee	5091'	5361'	gas
Massive Point Lookout	5361'		gas
Total Depth	5761'		

Logging Program:

Cased hole logging - Gamma Ray Neutron
Coring/DST - none

Mud Program:

<u>Interval</u>	<u>Type</u>	<u>Weight</u>	<u>Vis.</u>	<u>Fluid Loss</u>
0- 200'	Spud	8.4-9.0	40-50	no control
200-3296'	LSND	8.4-9.0	30-60	no control
3296-5761'	Gas/Mist	n/a	n/a	n/a

Pit levels will be visually monitored to detect gain or loss of fluid control.

Casing Program (as listed, the equivalent, or better):

<u>Hole Size</u>	<u>Depth Interval</u>	<u>Csq. Size</u>	<u>Wt.</u>	<u>Grade</u>
12 1/4"	0' - 200'	9 5/8"	32.3#	H-40
8 3/4"	0' - 3296'	7"	20.0#	J-55
6 1/4"	3196' - 5761'	4 1/2"	10.5#	J-55

Tubing Program:

0' - 5761' 2 3/8" 4.7# J-55

BOP Specifications, Wellhead and Tests:

Surface to Intermediate TD -

11" 2000 psi minimum double gate BOP stack (Reference Figure #1).
After nipple-up prior to drilling out surface casing, rams and casing will be tested to 600 psi for 30 minutes.

BOP Specifications, Wellhead and Tests (cont'd):**Intermediate TD to Total Depth -**

11" 2000 psi minimum double gate BOP stack (Reference Figure #1). After nipple-up prior to drilling out intermediate casing, rams and casing will be tested to 1500 psi for 30 minutes.

Surface to Total Depth -

2" nominal, 2000 psi minimum choke manifold (Reference Figure #3).

Completion Operations -

7 1/16" 2000 psi double gate BOP stack (Reference Figure #2). After nipple-up prior to completion, pipe rams, casing and liner top will be tested to 2000 psi for 15 minutes.

Wellhead -

9 5/8" x 7" x 2 3/8" x 2000 psi tree assembly.

General -

- Pipe rams will be actuated once each day and blind rams will be actuated once each trip to test proper functioning.
- An upper kelly cock valve with handle available and drill string valves to fit each drill string will be available on the rig floors at all times.
- BOP pit level drill will be conducted weekly for each drill crew.
- All BOP tests & drills will be recorded in daily drilling reports.
- Blind and pipe rams will be equipped with extension hand wheels.

Cementing:

9 5/8" surface casing - cement with 163 sx Class "B" cement with 1/4# flocele/sx and 3% calcium chloride (188 cu.ft. of slurry, 200% excess to circulate to surface). WOC 12 hrs. Test casing to 600 psi for 30 minutes.

Saw tooth guide shoe on bottom. Bowspring centralizers will be run in accordance with Onshore Order #2.

7" intermediate casing -

Lead w/263 sx Class "B" w/3% econolite, 10# gilsonite/sx and 1/2# flocele/sx. Tail w/90 sx 50/50 Class "B" Poz w/2% gel, 2% calcium chloride, 0.5# flocele/sx, and 10# gilsonite/sx (867 cu.ft. of slurry, 75% excess to circulate to surface.) WOC minimum of 12 hours before drilling out intermediate casing. If cement does not circulate to surface, a CBL will be run to determine TOC. Test casing to 1500 psi for 30 minutes.

Cement nose guide shoe on bottom with float collar spaced on top of shoe joint. Bowspring centralizers spaced every other joint off bottom, to the base of the Ojo Alamo at 2526'. Two turbolating centralizers at the base of the Ojo Alamo at 2526'. Bowspring centralizers spaced every fourth joint from the base of the Ojo Alamo to the base of the surface casing.

4 1/2" Production Liner -

Cement to circulate liner top. Lead with 157 sx 65/35 Class "B" poz w/6% gel, 5# gilsonite/sx and 1/4# flocele/sx. Tail with 135 sx 50/50 Class "B" Poz w/1/4# flocele/sx, 5# gilsonite/sx and 0.3% fluid loss additive (470 cu.ft., 75% excess to circulate liner top). WOC a minimum of 18 hrs prior to completing.

Cement nose guide shoe on bottom with float collar spaced on top of shoe joint. The liner hanger will have a rubber packoff.

- If hole conditions permit, an adequate water spacer will be pumped ahead of each cement job to prevent cement/ mud contamination or cement hydration.
- The pipe will be rotated and/or reciprocated, if hole conditions permit.

Special Drilling Operations (Gas/Mist Drilling):

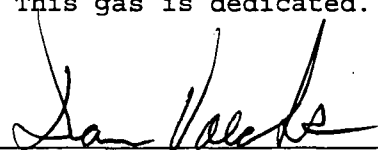
The following equipment will be operational while gas/mist drilling:

- An anchored blooie line will be utilized to discharge all cuttings and circulating medium to the blow pit a minimum of 100' from the wellhead.
- The blooie line will be equipped with an automatic igniter or pilot light.
- Compressors will be located a minimum of 100' from the wellhead in the opposite direction from the blooie line.
- Engines will have spark arresters or water cooled exhaust.
- The rotating head will be properly lubricated and maintained.
- A float valve will be utilized above the bit.
- Mud circulating equipment, water, and mud materials will be sufficient to maintain control of the well.

Additional Information:

- The Mesa Verde formation will be completed.
- No abnormal temperatures or hazards are anticipated.
- Anticipated pore pressures are as follows:

Fruitland Coal	800 psi
Pictured Cliffs	800 psi
Mesa Verde	700 psi
- Sufficient LCM will be added to the mud system to maintain well control, if lost circulation is encountered below the top of the Pictured Cliffs.
- The west half of Section 6 and the northwest quarter of Section 7 is dedicated to the Mesa Verde.
- This gas is dedicated.


Drilling Engineer

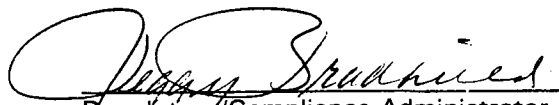
8/18/97
Date

BURLINGTON RESOURCES

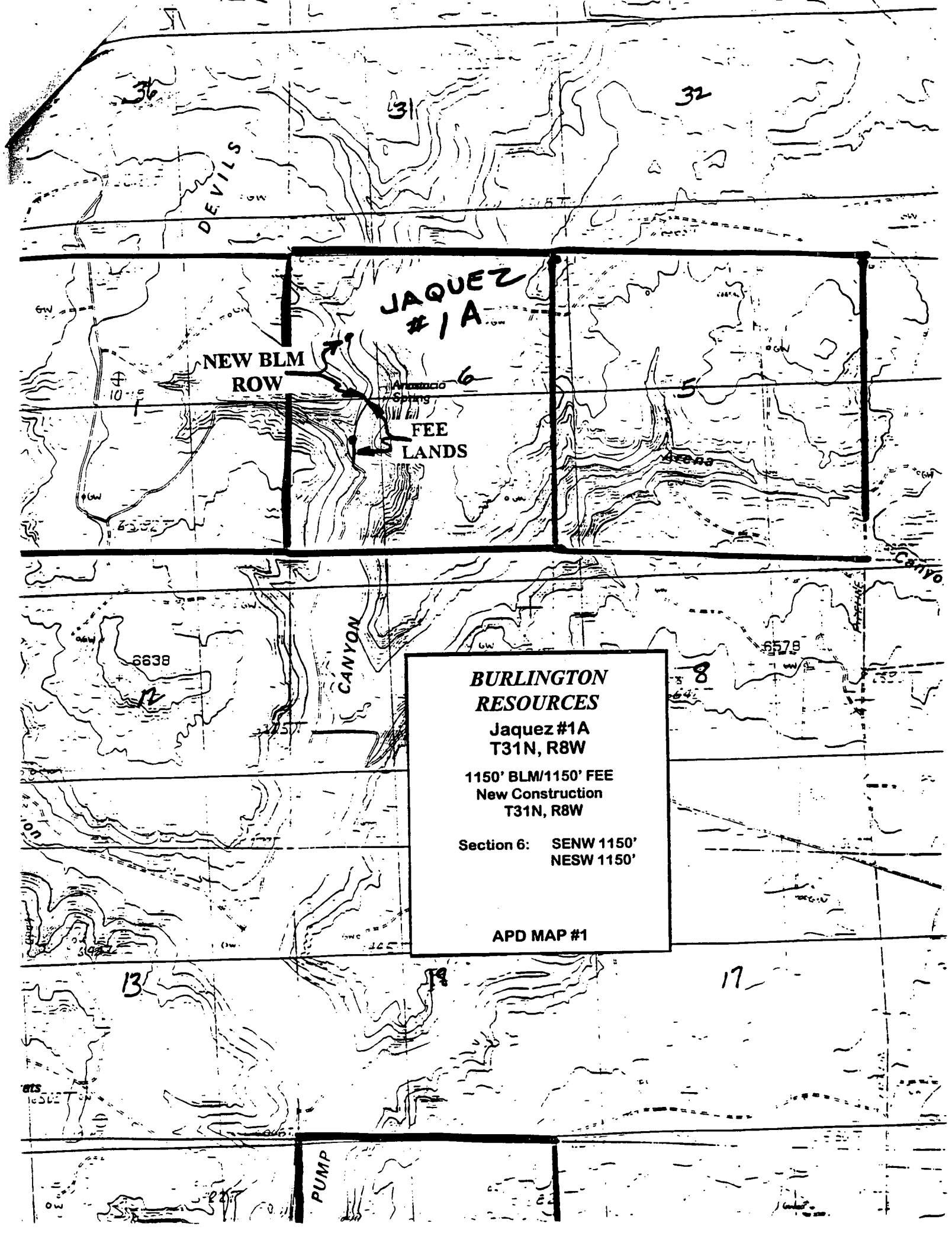
Jaquez #1A Multi-Point Surface Use Plan

1. Existing Roads - Refer to Map No. 1. Existing roads used to access the proposed location will be properly maintained for the duration of the project. Bureau of Land Management right-of-way has been applied for as shown on Map No. 1.
2. Planned Access Road - Refer to Map No. 1. The required new access road is shown on Map No. 1. The gradient, shoulder, crowning and other design elements will meet or exceed those specified by the responsible government agency. The new access road surface will not exceed twenty feet (20') in width. No additional turnarounds or turnouts will be required. Upon completion of the project, the access road will be adequately drained to control soil erosion. Approximately 2300' of access road will be constructed. Pipelines are indicated on Map No. 1A.
3. Location of Existing Wells - Refer to Map No. 1A.
4. Location of Existing and/or Proposed Facilities if Well is Productive -
 - a. On the Well Pad - Refer to Plat No. 1, anticipated production facilities plat.
 - b. Off the Well Pad - Anticipated pipeline facilities as shown on the attached plat from Williams Field Service.
5. Location and Type of Water Supply - Water will be hauled by truck for the proposed project and will be obtained from Pump Wash Water Hole #2 located in SW/4 Section 36, T-31-N, R-9-W, New Mexico.
6. Source of Construction Materials - If construction materials are required for the proposed project, such materials will be obtained from a commercial quarry.
7. Methods of Handling Waste Materials - All garbage and trash materials will be removed from the site for proper disposal. A portable toilet will be provided for human waste and serviced in a proper manner. If liquids are left in the reserve pit after completion of the project, the pit will be fenced until the liquids have had adequate time to dry. The location clean-up will not take place until such time as the reserve pit can be properly covered over to prevent run-off from carrying waste materials into the watershed. Reserve pits will be lined as needed with either 12 mil bio-degradable plastic liner or a bentonite liner. All earthen pits will be so constructed as to prevent leakage from occurring; no earthen pit will be located on natural drainage. Generation of hazardous waste is not anticipated. Federal regulations will be adhered to regarding handling and disposal of such waste if so generated.
8. Ancillary Facilities - None anticipated.
9. Wellsite Layout - Refer to the location diagram and to the wellsite cut and fill diagram (Figure No. 4). The blow pit will be constructed with a 2'/160' grade to allow positive drainage to the reserve pit and prevent standing liquids in the blow pit.

10. Plans for Restoration of the Surface - After completion of the proposed project, the location will be cleaned and leveled. The location will be left in such a condition that will enable reseeding operations to be carried out. Seed mixture as designated by the responsible government agency will be used. The reseeding operations will be performed during the time period set forth by the responsible government agency. The permanent location facilities will be painted as designated by the responsible government agency.
11. Surface Ownership - Bureau of Land Management
12. Other Information - Environmental stipulations as outlined by the responsible government agency will be adhered to. Refer to the archaeological report for a description of the topography, flora, fauna, soil characteristics, dwellings, historical and cultural sites.
13. Operator's Representative and Certification - Burlington Resources Oil & Gas Company Regional Drilling Manager, Post Office Box 4289, Farmington, NM 87499, telephone (505) 326-9700. I hereby certify that I, or persons under my direct supervision, have inspected the proposed drill site and access route; that I am familiar with the conditions which presently exist; that the statements made in this plan, are to the best of my knowledge, true and correct; and that the work associated with the operations proposed herein will be performed by Burlington Resources Oil and Gas Company and its contractors and subcontractors in conformity with this plan and the terms and conditions under which it is approved.

 8-15-97
Regulatory/Compliance Administrator Date

pb



**JAQUEZ
#1A**

**NEW BLM
ROW**

**FEE
LANDS**

**BURLINGTON
RESOURCES**

**Jaquez #1A
T31N, R8W**

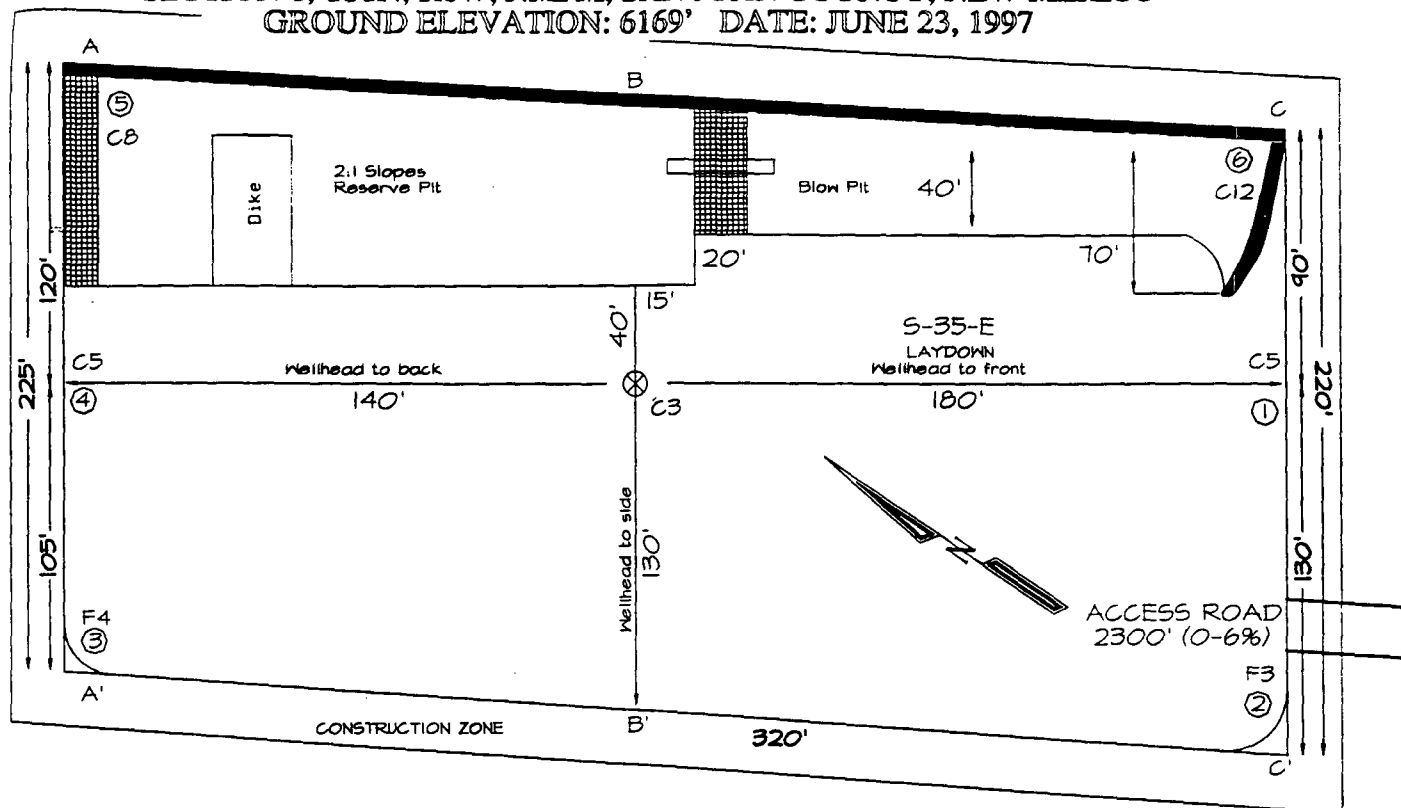
**1150' BLM/1150' FEE
New Construction
T31N, R8W**

**Section 6: SENW 1150'
 NESW 1150'**

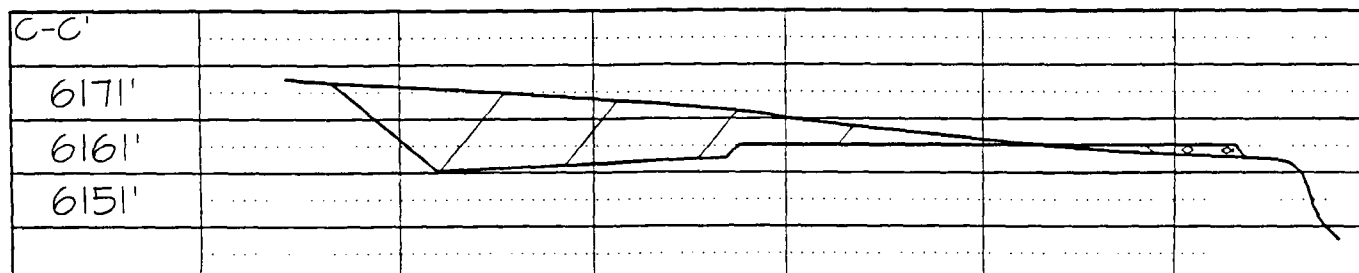
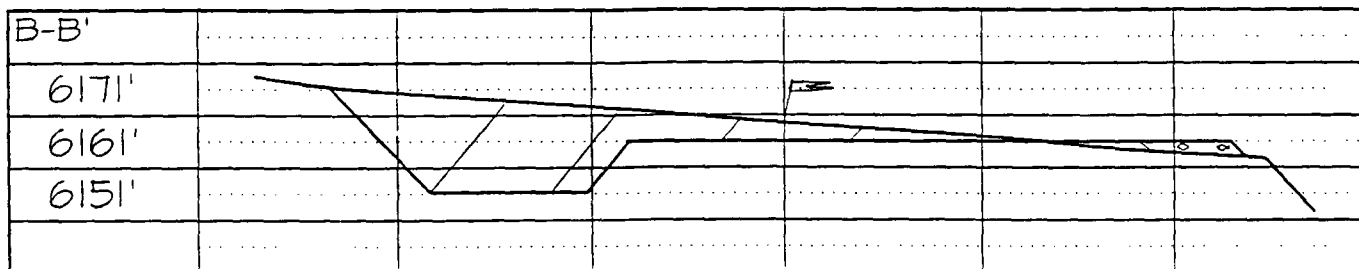
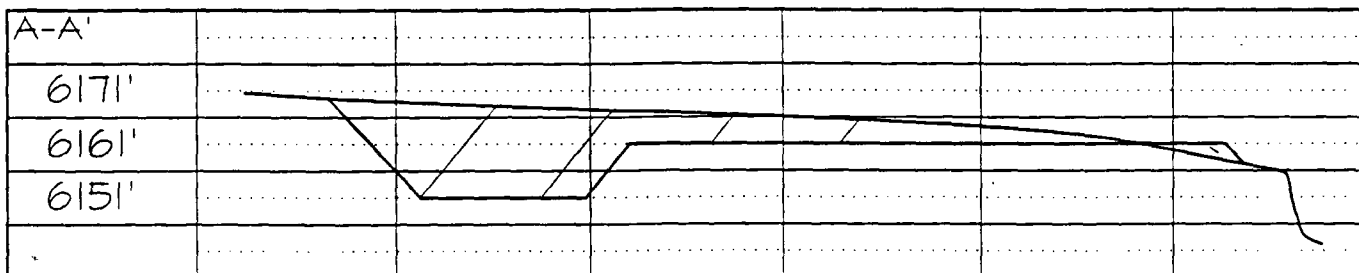
APD MAP #1

LAT #1

BURLINGTON RESOURCES OIL & GAS COMPANY
Jaquez #1A, 1620' FNL & 1195' FWL
SECTION 5, T31N, R8W, NMPM, SAN JUAN COUNTY, NEW MEXICO
GROUND ELEVATION: 6169' DATE: JUNE 23, 1997



Reserve Pit Dike: to be 8' above Deep side (overflow - 3' wide and 1' above shallow side).
 Blow Pit: overflow pipe halfway between top and bottom and to extend over plastic liner and into blow pit.



Note: Contractor should call One-Call for location of any marked or unmarked buried pipelines or cables on well pad and/or access road at least two (2) working days prior to construction

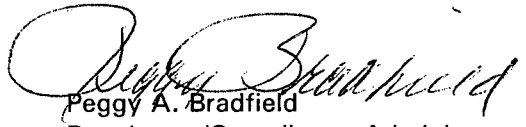
- 3) Vastar Resources, Inc.
Attn: Michael Rodgers
15375 Memorial Drive
Houston, TX 77079

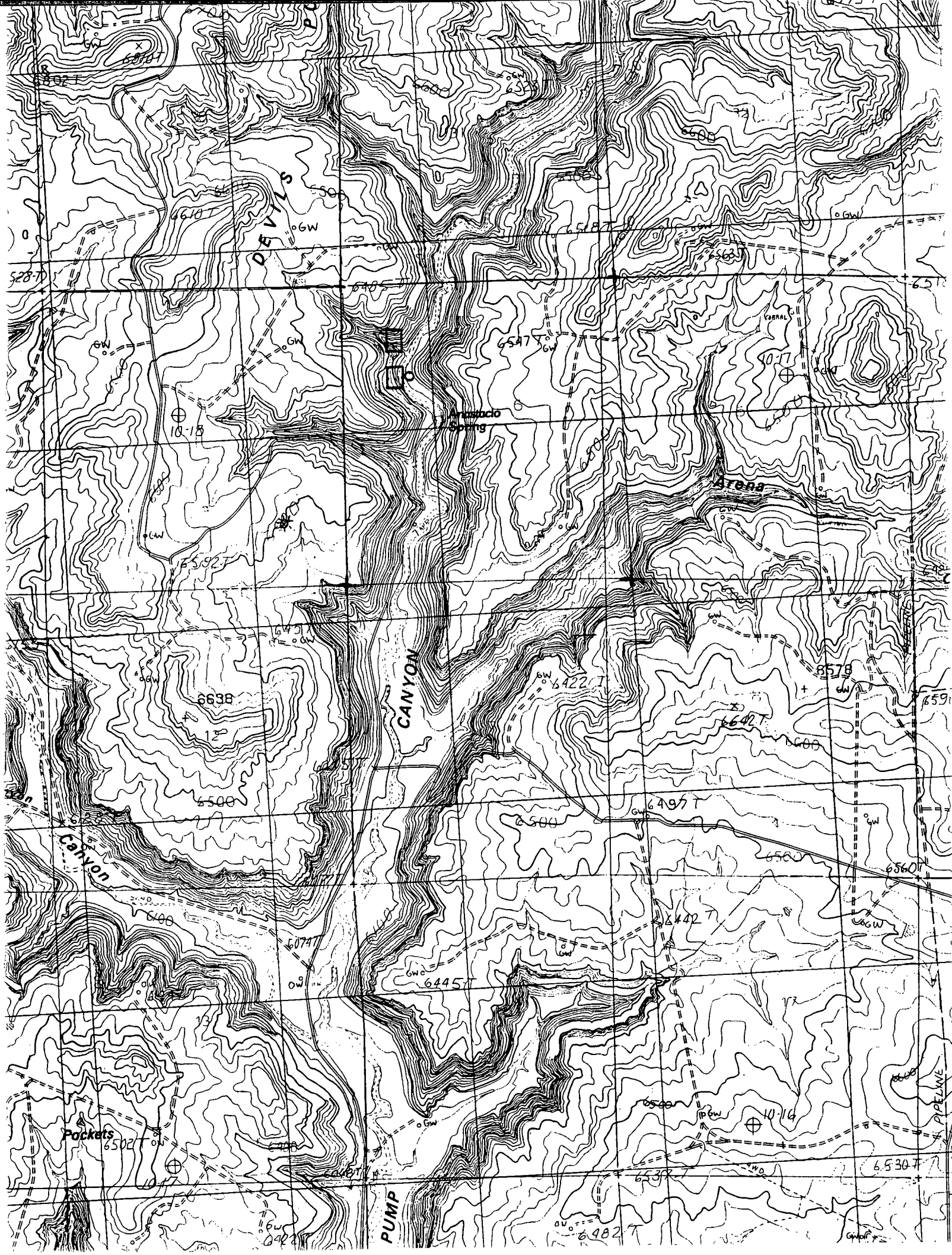
Re: Jaquez #1A
1620'FNL, 1195'FWL Section 6, T-31-N, R-8-W, San Juan County
API # 30-045-29494

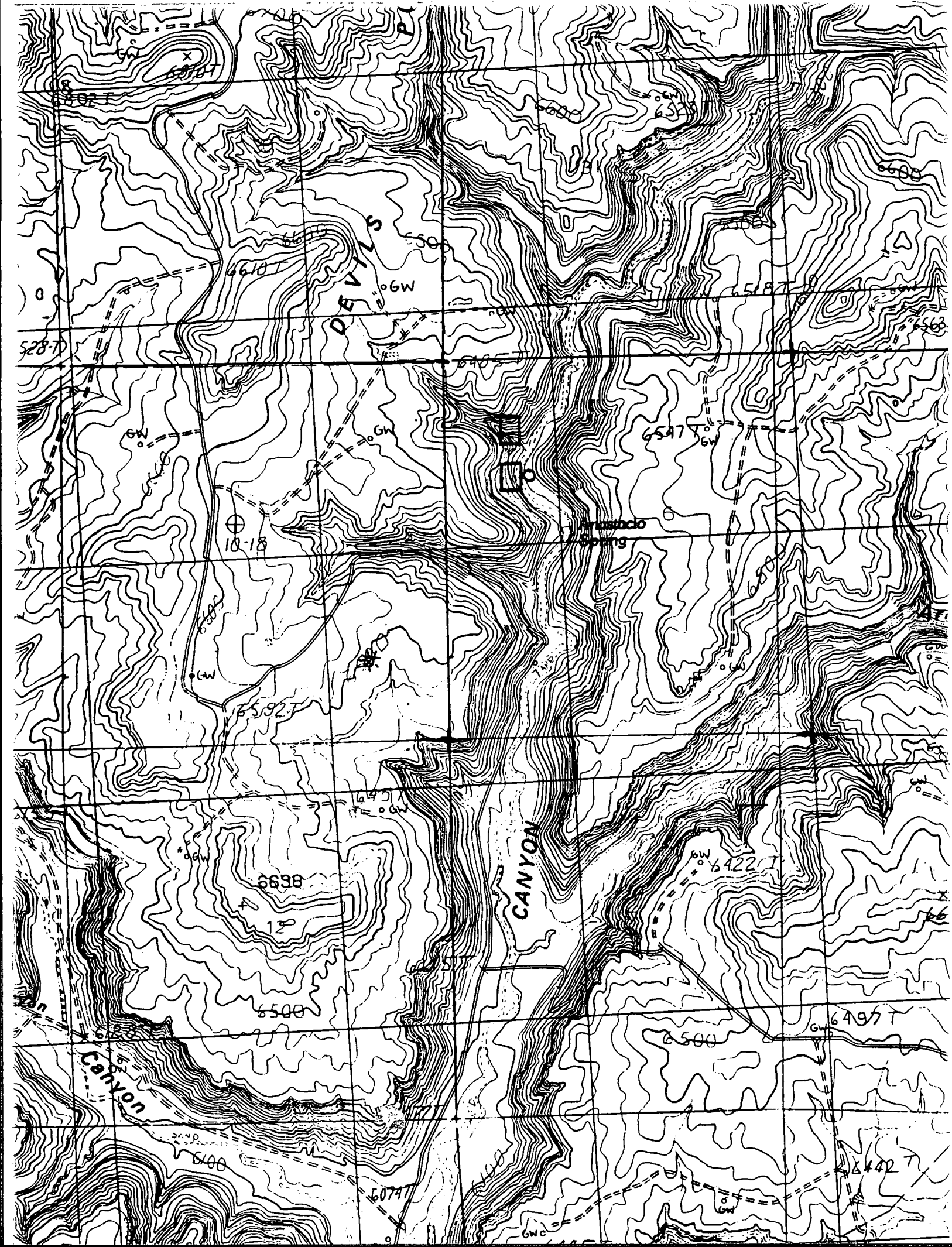
I hereby certify that the following offset operators/owners have been mailed notification of our application for non-standard location to drill the referenced well.

Kock Exploration
PO Box 2256
Wichita, KS 67201

Vastar Resources, Inc
Att: Michael Rodgers
15375 Memorial Drive
Houston, TX 77079


Peggy A. Bradfield
Regulatory/Compliance Administrator
Burlington Resources





STATE OF NEW MEXICO
ENERGY, MINERALS, AND NATURAL RESOURCES DEPARTMENT
OIL CONSERVATION DIVISION

IN THE MATTER OF THE HEARING
CALLED BY THE OIL CONSERVATION
DIVISION FOR THE PURPOSE OF
CONSIDERING:

CASE NO. 10056
Order No. R-9315

APPLICATION OF MERIDIAN OIL,
INC. FOR THREE NON-STANDARD
GAS PRORATION UNITS, SAN JUAN
COUNTY, NEW MEXICO.

ORDER OF THE DIVISION

BY THE DIVISION:

This cause came on for hearing at 8:15 a.m. on August 22 and September 19, 1990, at Santa Fe, New Mexico, before Examiner David R. Catanach.

NOW, on this 9th day of October, 1990, the Division Director, having considered the testimony, the record, and the recommendations of the Examiner, and being fully advised in the premises,

FINDS THAT:

(1) Due public notice having been given as required by law, the Division has jurisdiction of this cause and the subject matter thereof.

(2) The applicant, Meridian Oil, Inc., seeks approval for three non-standard gas proration units for Basin-Fruitland Coal Gas Pool production in Irregular Sections 6, 7, 18, 19 and 30, Township 31 North, Range 8 West, NMPM, San Juan County, New Mexico, described as follows:

CASE NO. 10056
 Order No. R-9315
 Page -2-

TOWNSHIP 31 NORTH, RANGE 8 WEST, NMPM

<u>TRACT</u>	<u>ACREAGE</u>	<u>DESCRIPTION</u>
1	332.94	Section 6: Lots 3 through 7, SE/4 NW/4, E/2 SW/4
		Section 7: Lots 1 and 2 <i>Inquest 331</i> E/2 NW/4
2	326.56	Section 19: Lots 1 through 4, E/2 W/2
		Section 30: Lots 1 and 2, <i>Quinn 341</i> E/2 NW/4
3	330.16	Section 18: Lots 1 through 4, E/2 W/2
		Section 7: Lots 3 and 4, <i>Quinn 338</i> E/2 SW/4

(3) The proposed non-standard gas proration units are necessitated by a variation in the legal subdivision of the United States Public Lands Survey.

(4) The applicant proposes to drill a well at a standard coal gas well location thereon in each of the proposed non-standard gas proration units to test the Basin-Fruitland Coal Gas Pool.

(5) Each of the proposed non-standard gas proration units may reasonably be presumed productive of gas from the Basin-Fruitland Coal Gas Pool and each of the proposed non-standard gas proration units can be efficiently and economically drained and developed by the proposed wells.

CASE NO. 10056
Order No. R-9315
Page -3-

(6) According to evidence and testimony presented by the applicant, each of the proposed non-standard gas proration units has previously been approved by the Division for use in developing gas reserves in the Blanco-Mesaverde Pool, said approval granted by Division Order No. R-392, dated November 24, 1953, and has proven to be effective in promoting orderly development in this area.

(7) No offset operator and/or interest owner appeared at the hearing in opposition to the application.

(8) Approval of the subject application will afford the applicant the opportunity to produce its just and equitable share of the gas in the Basin-Fruitland Coal Gas Pool, will prevent the economic loss caused by the drilling of unnecessary wells, avoid the augmentation of risk arising from the drilling of an excessive number of wells, and will otherwise prevent waste and protect correlative rights.

IT IS THEREFORE ORDERED THAT:

(1) The following described non-standard gas spacing and proration units in the Basin-Fruitland Coal Gas Pool, San Juan County, New Mexico, are hereby established:

TOWNSHIP 31 NORTH, RANGE 8 WEST, NMPM

<u>TRACT</u>	<u>ACREAGE</u>	<u>DESCRIPTION</u>
1	332.94	Section 6: Lots 3 through 7, SE/4 NW/4, E/2 SW/4 Section 7: Lots 1 and 2 E/2 NW/4


CASE NO. 10056
Order No. R-9315
Page -4-

2	326.56	Section 19: Lots 1 through 4, E/2 W/2 Section 30: Lots 1 and 2, E/2 NW/4
3	330.16	Section 18: Lots 1 through 4, E/2 W/2 Section 7: Lots 3 and 4, E/2 SW/4

(2) Jurisdiction of this cause is retained for the entry of such further orders as the Division may deem necessary.

DONE at Santa Fe, New Mexico, on the day and year hereinabove designated.

STATE OF NEW MEXICO
OIL CONSERVATION DIVISION


WILLIAM J. LEMAY
Director

S E A L