

MVINF08

NSL

3/23/98



WALSH

ENGINEERING & PRODUCTION CORP.

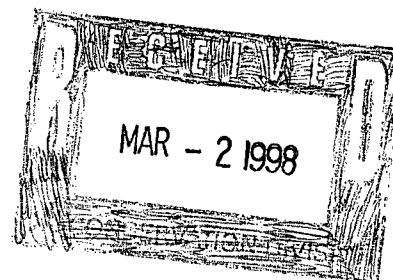
Petroleum Engineering Consulting
Lease Management
Contract Pumping

7415 East Main
Farmington, New Mexico 87402
(505) 327-4892

February 27, 1998

Ms. Lori Wrotenbery
New Mexico Oil Conservation Division
2040 S. Pacheco
Santa Fe, NM 87505

Re: Non-Standard Location
Williams Production Company
Rosa Unit #147A
1850' FNL, 1295' FWL
Section 33, T31N R5W
Rio Arriba County, NM
Blanco Mesa Verde



Dear Ms. Wrotenbery,

This is a request on behalf of Williams Production Company for administrative approval for a non-standard gas location in the Blanco Mesa Verde pool for the referenced well.

The proposed spacing unit is the north half of Section 33, T31N, R5W, which is 320 acres. The proposed location encroaches on the 130' setback required from the quarter-quarter section line. Williams prefers not to move the well because of the steep hillside just to the east of the proposed location. Any other locations would require the construction of additional access road and unnecessary cuts in an area that is important for big game habitat.

As the Unit Operator of the Rosa Unit, Williams Production is the only offset operator. Attached is a plat indicating the well location and proposed spacing unit.

Thank you for your consideration and approval of this application. If you have any questions please do not hesitate to call upon me.

Sincerely,

Paul C. Thompson, P.E.
President, Walsh Engineering

cc: NMOCD Aztec NM
BLM Farmington NM

District I
PO Box 1980, Hobbs, NM 88241-1980
District II
PO Drawer DD, Artesia, NM 88211-0719
District III
1000 Rio Brazos Rd., Aztec, NM 87410
District IV
PO Box 2088, Santa Fe, NM 87504-2088

State of New Mexico
Energy, Minerals & Natural Resources Department

OIL CONSERVATION DIVISION
PO Box 2088
Santa Fe, NM 87504-2088

Form C-102
Revised February 21, 1994
Instructions on back
Submit to Appropriate District Office
State Lease - 4 Copies
Fee Lease - 3 Copies

☐ AMENDED REPORT

WELL LOCATION AND ACREAGE DEDICATION PLAT

API Number	Pool Code 72319	Pool Name BLANCO MESA VERDE
Property Code 008480	Property Name Rosa Unit	Well Number 147A
OGRID No. 120782	Operator Name Williams Production Co.	Elevation 6551'

10 Surface Location

UL or lot no.	Section	Township	Range	Lot Ida	Feet from the	North/South line	Feet from the	East/West line	County
H	33	31 N	5 W		1850	North	1295	East	R.A.

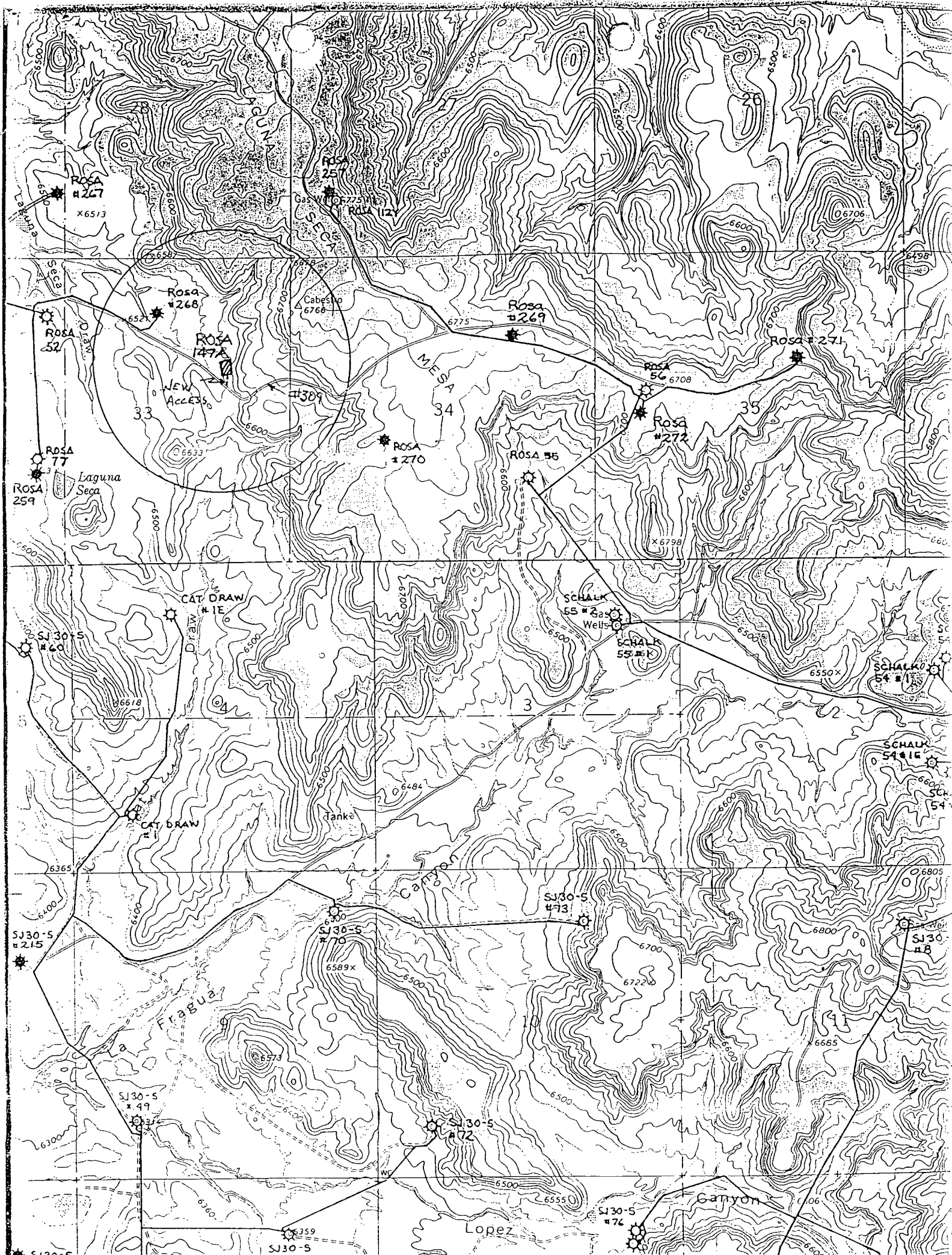
11 Bottom Hole Location If Different From Surface

UL or lot no.	Section	Township	Range	Lot Ida	Feet from the	North/South line	Feet from the	East/West line	County

12 Dedicated Acres 320	13 Joint or Infill N	14 Consolidation Code U	15 Order No.
---------------------------	-------------------------	----------------------------	--------------

NO ALLOWABLE WILL BE ASSIGNED TO THIS COMPLETION UNTIL ALL INTERESTS HAVE BEEN CONSOLIDATED
OR A NON-STANDARD UNIT HAS BEEN APPROVED BY THE DIVISION

16	5286.60'	17 OPERATOR CERTIFICATION
		I hereby certify that the information contained herein is true and complete to the best of my knowledge and belief
		Signature Paul C. Thompson
		Printed Name Paul C. Thompson, Agent
		Title President
		Walsh Engr. & Prod. Corp.
		Date 2/21/96
		18 SURVEYOR CERTIFICATION
		I hereby certify that the well location shown on this plat was plotted from field notes of actual surveys made by me or under my supervision, and that the same is true and correct to the best of my belief.
		Date of Survey 11-29-95
		Signature and Seal of Professional Surveyor NEHE C. EDWARDS
		Certificate Number 8857

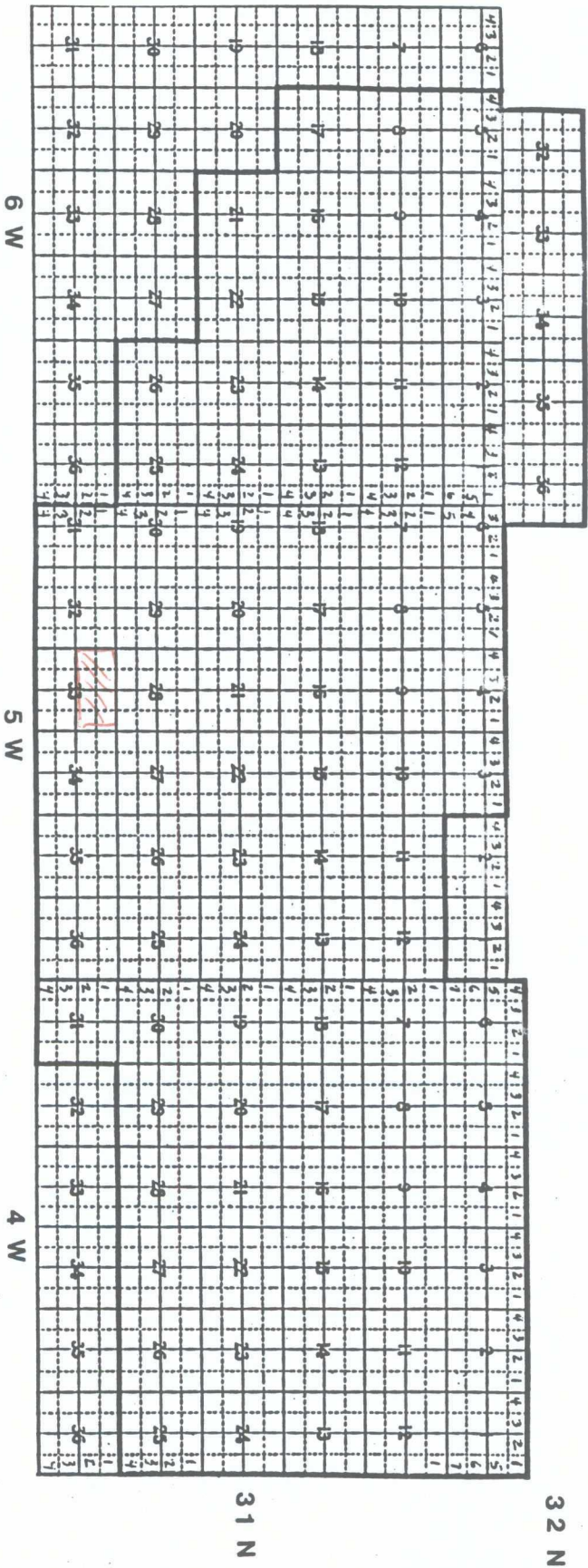


ROSA

RIO ARRIBA & SAN JUAN COUNTIES
NEW MEXICO

No. I-Sec. No. 587

EFFECTIVE 6-24-48



1-1-87



gulram, inc.

petroleum engineering and government regulation consultants