

ABOVE THIS LINE FOR DIVISION USE ONLY

NEW MEXICO OIL CONSERVATION DIVISION
 - Engineering Bureau -
 1220 South St. Francis Drive, Santa Fe, NM 87505



COG Operating LLC
 Skelly Unit # 613
 5925

ADMINISTRATIVE APPLICATION CHECKLIST

THIS CHECKLIST IS MANDATORY FOR ALL ADMINISTRATIVE APPLICATIONS FOR EXCEPTIONS TO DIVISION RULES AND REGULATIONS WHICH REQUIRE PROCESSING AT THE DIVISION LEVEL IN SANTA FE

Application Acronyms:

- [NSL-Non-Standard Location] [NSP-Non-Standard Proration Unit] [SD-Simultaneous Dedication]
- [DHC-Downhole Commingling] [CTB-Lease Commingling] [PLC-Pool/Lease Commingling]
- [PC-Pool Commingling] [OLS - Off-Lease Storage] [OLM-Off-Lease Measurement]
- [WFX-Waterflood Expansion] [PMX-Pressure Maintenance Expansion]
- [SWD-Salt Water Disposal] [IPI-Injection Pressure Increase]
- [EOR-Qualified Enhanced Oil Recovery Certification] [PPR-Positive Production Response]

- [1] **TYPE OF APPLICATION** - Check Those Which Apply for [A]
- [A] Location - Spacing Unit - Simultaneous Dedication
 NSL NSP SD
- Check One Only for [B] or [C]
- [B] Commingling - Storage - Measurement
 DHC CTB PLC PC OLS OLM
- [C] Injection - Disposal - Pressure Increase - Enhanced Oil Recovery
 WFX PMX SWD IPI EOR PPR
- [D] Other: Specify _____

RECEIVED
 2008 SEP 8 AM 9:45

- [2] **NOTIFICATION REQUIRED TO:** - Check Those Which Apply, or Does Not Apply Interests are the same
- [A] Working, Royalty or Overriding Royalty Interest Owners
- [B] Offset Operators, Leaseholders or Surface Owner
- [C] Application is One Which Requires Published Legal Notice
- [D] Notification and/or Concurrent Approval by BLM or SLO
U.S. Bureau of Land Management - Commissioner of Public Lands, State Land Office
- [E] For all of the above, Proof of Notification or Publication is Attached, and/or,
- [F] Waivers are Attached

[3] **SUBMIT ACCURATE AND COMPLETE INFORMATION REQUIRED TO PROCESS THE TYPE OF APPLICATION INDICATED ABOVE.**

[4] **CERTIFICATION:** I hereby certify that the information submitted with this application for administrative approval is **accurate** and **complete** to the best of my knowledge. I also understand that **no action** will be taken on this application until the required information and notifications are submitted to the Division.

Note: Statement must be completed by an individual with managerial and/or supervisory capacity.

ROBYN M. ODOM _____ 9/5/08
 Print or Type Name Signature Title Date

_____ rododom@conchoresources.com
 e-mail Address

**Skelly Unit #613
Eddy County, NM**

VERTICAL Fren; Glorieta Yeso oil well
TD of approximately 6500'
2310' FSL & 1650' FWL Sec 23, T17S, R31E, Unit K

The plan for this well is to complete it in the Yeso formation.
We won't know the exact perms until we drill & log it, but it will be similar to the

Willow State #8
330 FSL & 1650 FEL, Section 16, T17S, R31E, UL O
drilled in Malrch 2006

The Willow State #8 Yeso completion has overall perforations from 5380.5' – 5845.5', but is divided into 2 perf/stimulation intervals. At this time, we assume the Skelly Unit 613 will be very similar.

1st Interval: 5650' – 5845.5', 67 total holes.
acidized w/ 2265 gals acid,
frac'd w/ 8000# LiteProp, 30,000 gals 30# gel, 54,663 gals 40# gel, & 90,560#
16/30 sand

2nd Interval: 5380.5' – 5544', 56 total holes.
acidized w/ 2550 gals acid,
frac'd w/ 8006# LiteProp, 30,000 gals 30# gel, 53,000 gals 40# gel, & 91,740#
16/30 sand

Attachment 1
Plat and map

Attachment 2
Map and legend of offset wells.

Attachment 3
Updated land plat showing that COG owns offset acreage.
The acreage we are encroaching on is the NE/4 of the SW/4 of Section 23.
COG Operating LLC owns all of Section 23.
Interests are common.

COG Operating LLC respectfully requests permission to have this NSL approved.

DISTRICT I
1625 N. FRENCH DR., HOBBS, NM 88240

DISTRICT II
1301 W. GRAND AVENUE, ARTESIA, NM 88210

DISTRICT III
1000 Rio Brazos Rd., Aztec, NM 87410

DISTRICT IV
1220 S. ST. FRANCIS DR., SANTA FE, NM 87505

State of New Mexico
Energy, Minerals and Natural Resources Department

OIL CONSERVATION DIVISION
1220 SOUTH ST. FRANCIS DR.
Santa Fe, New Mexico 87505

Form C-102
Revised October 12, 2005
Submit to Appropriate District Office
State Lease - 4 Copies
Fee Lease - 3 Copies

WELL LOCATION AND ACREAGE DEDICATION PLAT

AMENDED REPORT

API Number 30-015-	Pool Code 26770	Pool Name FREN; GLORIETA-YESO
Property Code 305607	Property Name SKELLY UNIT	Well Number 613
OGRID No. 229137	Operator Name COG OPERATING, LLC	Elevation 3863'

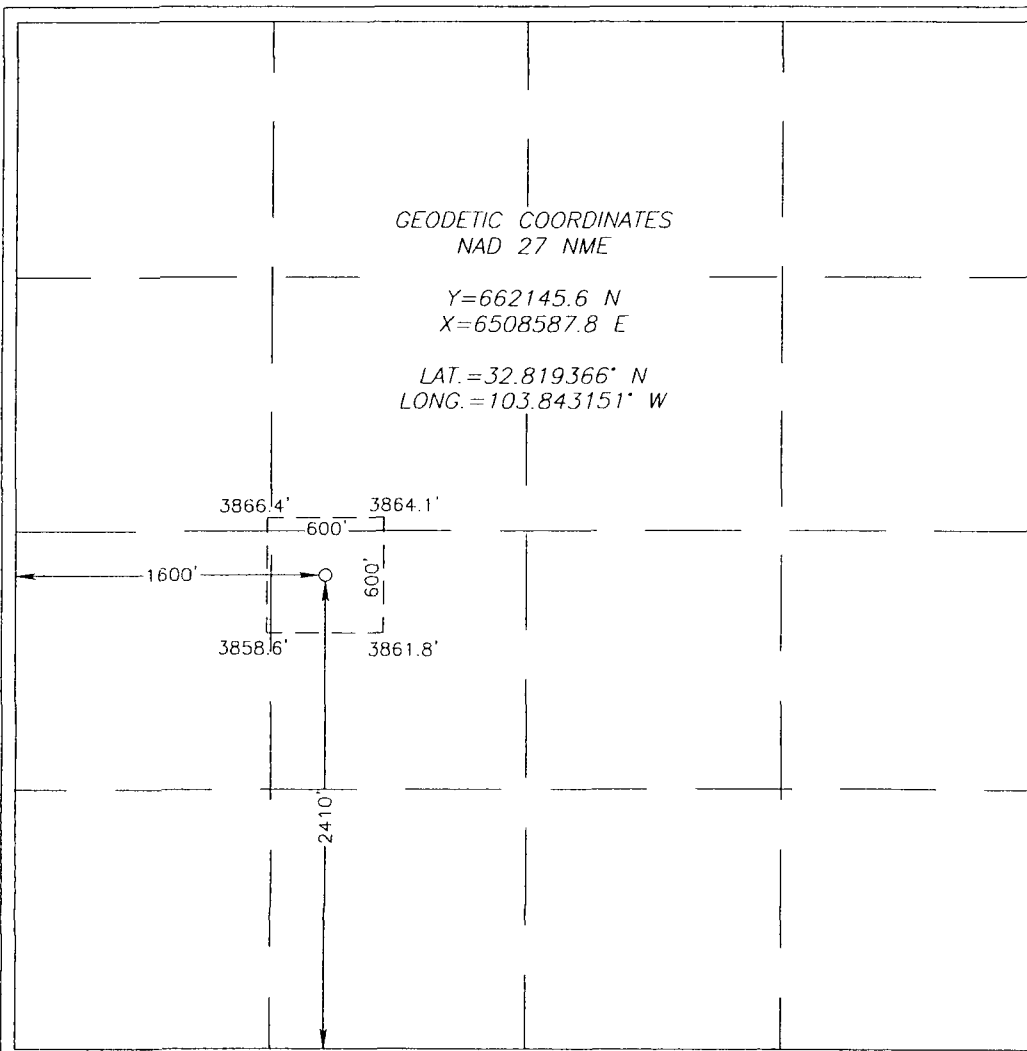
Surface Location

UL or lot No.	Section	Township	Range	Lot Idn	Feet from the	North/South line	Feet from the	East/West line	County
K	23	17-S	31-E		2410	SOUTH	1600	WEST	EDDY

Bottom Hole Location If Different From Surface

UL or lot No.	Section	Township	Range	Lot Idn	Feet from the	North/South line	Feet from the	East/West line	County
Dedicated Acres 40	Joint or Infill	Consolidation Code	Order No.						

NO ALLOWABLE WILL BE ASSIGNED TO THIS COMPLETION UNTIL ALL INTERESTS HAVE BEEN CONSOLIDATED OR A NON-STANDARD UNIT HAS BEEN APPROVED BY THE DIVISION



OPERATOR CERTIFICATION

I hereby certify that the information herein is true and complete to the best of my knowledge and belief, and that this organization either owns a working interest or unleased mineral interest in the land including the proposed bottom hole location or has a right to drill this well at this location pursuant to a contract with an owner of such mineral or working interest, or to a voluntary pooling agreement or a compulsory pooling order heretofore entered by the division.

[Signature] 9/12/2008
Signature Date
Robyn Odom
Printed Name

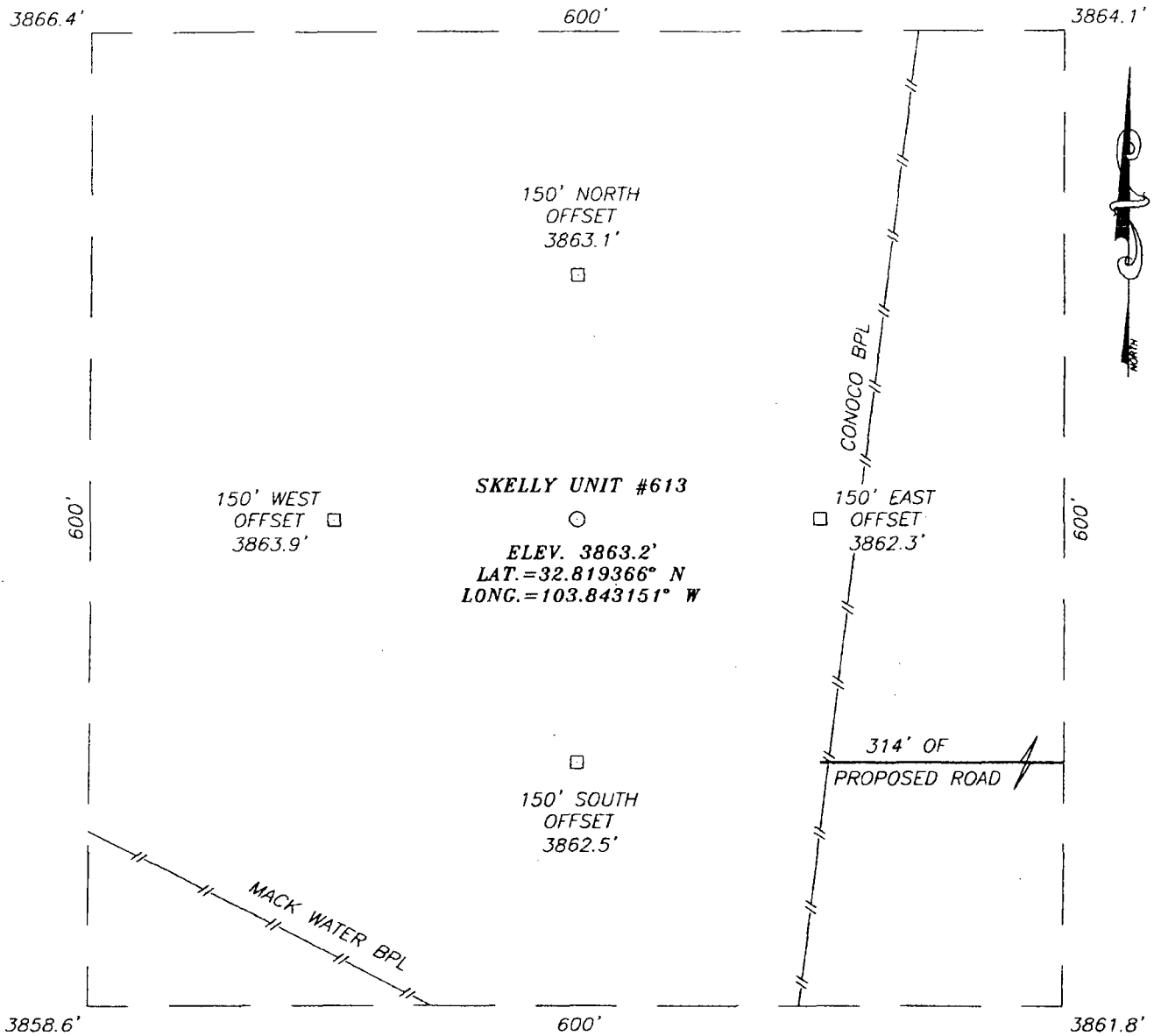
SURVEYOR CERTIFICATION

I hereby certify that the well location shown on this plat was plotted from field notes of actual surveys made by me or under my supervision, and that the same is true and correct to the best of my belief.

RONALD J. EIDSON
AUGUST 18, 2008
Date Surveyed JC
Signature & Seal of Professional Surveyor
[Signature] 8/28/08
08:11:228

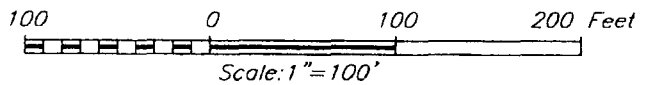
Certificate No. GARY EIDSON 12641
RONALD J. EIDSON 3239

SECTION 23, TOWNSHIP 17 SOUTH, RANGE 31 EAST, N.M.P.M.,
 EDDY COUNTY, NEW MEXICO



DIRECTIONS TO LOCATION

FROM THE INTERSECTION OF U.S. HWY. #82 AND CO. RD. #223 (SWEET GUM), GO EAST ON U.S. HWY. #82 APPROX. 1.7 MILES TO A LEASE ROAD. TURN RIGHT AND GO SOUTH APPROX. 0.3 MILES. THIS LOCATION IS APPROX. 400 FEET WEST OF LEASE ROAD.



PROVIDING SURVEYING SERVICES
 SINCE 1946
JOHN WEST SURVEYING COMPANY
 412 N. DAL PASO
 HOBBS, N.M. 88240
 (505) 393-3117

COG OPERATING, LLC

SKELLY UNIT #613 WELL
 LOCATED 2410 FEET FROM THE SOUTH LINE
 AND 1600 FEET FROM THE WEST LINE OF SECTION 23,
 TOWNSHIP 17 SOUTH, RANGE 31 EAST, N.M.P.M.,
 EDDY COUNTY, NEW MEXICO.

Survey Date: 08/18/08	Sheet 1 of 1 Sheets		
W.O. Number: 08.11.1228	Dr By: JC	Rev 1:N/A	
Date: 08/25/08	08111228	Scale: 1"=100'	

Offset Wells to Skelly Unit 613

API#	Operator	Lease	Well#	County	Legal	First Prod.	Last Prod.	Field Name	Reservoir Name	Total Depth	Well Status
30-015-05359	WISER OIL CO (THE)	SKELLY UNIT	049	EDDY	S:23, T:17S, R:31E	Jan 1967	Dec 1977	GRAYBURG JKSN SR-Q-G-SA(DO NOT USE)		3,850	Active
30-015-05359	WISER OIL CO (THE)	SKELLY UNIT	049	EDDY	S:23, T:17S, R:31E	Jan 1971	Nov 1996	GRAYBURG JACKSON	SR-Q-G-SA	3,850	Active
30-015-05360	FOREST OIL CORP	SKELLY UNIT	040	EDDY	S:23, T:17S, R:31E	Jan 2001	Jun 2004	GRAYBURG JACKSON	SR-Q-G-SA	3,827	Flowing
30-015-05360	WISER OIL CO (THE)	SKELLY UNIT	040	EDDY	S:23, T:17S, R:31E	Jan 1967	Dec 1967	GRAYBURG JKSN SR-Q-G-SA(DO NOT USE)		3,827	Flowing
30-015-05361	WISER OIL CO (THE)	SKELLY UNIT	039	EDDY	S:23, T:17S, R:31E	Jan 1967	Dec 1977	GRAYBURG JKSN SR-Q-G-SA(DO NOT USE)		3,841	Active
30-015-05361	FOREST OIL CORP	SKELLY UNIT	039	EDDY	S:23, T:17S, R:31E	Jan 1969	Jun 2004	GRAYBURG JACKSON	SR-Q-G-SA	3,841	Active
30-015-05362	FOREST OIL CORP	SKELLY UNIT	037	EDDY	S:23, T:17S, R:31E	Jan 1971	Sep 1993	GRAYBURG JACKSON	SR-Q-G-SA	3,886	Temporarily Abandoned
30-015-05362	WISER OIL CO (THE)	SKELLY UNIT	037	EDDY	S:23, T:17S, R:31E	Jan 1967	Dec 1977	GRAYBURG JKSN SR-Q-G-SA(DO NOT USE)		3,886	Temporarily Abandoned
30-015-05363	WISER OIL CO (THE)	SKELLY UNIT	048	EDDY	S:23, T:17S, R:31E	Jan 1967	Dec 1967	GRAYBURG JKSN SR-Q-G-SA(DO NOT USE)		3,857	Pumping
30-015-05363	WISER OIL CO (THE)	SKELLY UNIT	048	EDDY	S:23, T:17S, R:31E	Jan 1969	Dec 1969	GRAYBURG JACKSON	SR-Q-G-SA	3,857	Pumping
30-015-05364	WISER OIL CO (THE)	SKELLY UNIT	047	EDDY	S:23, T:17S, R:31E	Jan 1967	Dec 1977	GRAYBURG JKSN SR-Q-G-SA(DO NOT USE)		3,822	Injection Well
30-015-05364	FOREST OIL CORP	SKELLY UNIT	047	EDDY	S:23, T:17S, R:31E	Jan 1969	Jun 2004	GRAYBURG JACKSON	SR-Q-G-SA	3,822	Injection Well
30-015-05365	WISER OIL CO (THE)	SKELLY UNIT	070	EDDY	S:23, T:17S, R:31E	Jan 1967	Dec 1977	GRAYBURG JKSN SR-Q-G-SA(DO NOT USE)		0	Temporarily Abandoned
	FOREST	SKELLY			S:23,						

30-015-05365	OIL CORP UNIT	070	EDDY	T:17S, R:31E	Jan 1969	May 2006	GRAYBURG JACKSON	SR-Q-G-SA	0	Temporarily Abandoned
30-015-05366	FOREST OIL CORP SKELLY UNIT	078	EDDY	S:23, T:17S, R:31E	Jan 1971	May 2008	GRAYBURG JACKSON	SR-Q-G-SA	3,855	Active
30-015-05366	WISER OIL CO (THE) SKELLY UNIT	078	EDDY	S:23, T:17S, R:31E	Jan 1967	Dec 1977	GRAYBURG JKSN SR-Q-G-SA(DO NOT USE)		3,855	Active
30-015-05369	FOREST OIL CORP SKELLY UNIT	079	EDDY	S:23, T:17S, R:31E	Jan 2001	May 2006	GRAYBURG JACKSON	SR-Q-G-SA	3,894	Injection Well
30-015-05369	WISER OIL CO (THE) SKELLY UNIT	079	EDDY	S:23, T:17S, R:31E	Jan 1967	Jul 1970	GRAYBURG JKSN SR-Q-G-SA(DO NOT USE)		3,894	Injection Well
30-015-05370	WISER OIL CO (THE) SKELLY UNIT	080	EDDY	S:23, T:17S, R:31E	Jan 1967	Dec 1977	GRAYBURG JKSN SR-Q-G-SA(DO NOT USE)		3,884	Injection Well
30-015-05370	FOREST OIL CORP SKELLY UNIT	080	EDDY	S:23, T:17S, R:31E	Jan 1969	May 2008	GRAYBURG JACKSON	SR-Q-G-SA	3,884	Injection Well
30-015-05371	FOREST OIL CORP SKELLY UNIT	081	EDDY	S:23, T:17S, R:31E	Jan 2001	May 2008	GRAYBURG JACKSON	SR-Q-G-SA	3,910	Injection Well
30-015-05371	WISER OIL CO (THE) SKELLY UNIT	081	EDDY	S:23, T:17S, R:31E	Jan 1967	Jul 1970	GRAYBURG JKSN SR-Q-G-SA(DO NOT USE)		3,910	Injection Well
30-015-05372	FOREST OIL CORP SKELLY UNIT	072	EDDY	S:23, T:17S, R:31E	Jan 1971	May 2008	GRAYBURG JACKSON	SR-Q-G-SA	3,000	Injection Well
30-015-05372	WISER OIL CO (THE) SKELLY UNIT	072	EDDY	S:23, T:17S, R:31E	Jan 1967	Dec 1977	GRAYBURG JKSN SR-Q-G-SA(DO NOT USE)		3,000	Injection Well
30-015-10504	WISER OIL CO (THE) SKELLY UNIT	073	EDDY	S:23, T:17S, R:31E	Jan 1967	Dec 1967	GRAYBURG JKSN SR-Q-G-SA(DO NOT USE)		0	Active
30-015-10504	WISER OIL CO (THE) SKELLY UNIT	073	EDDY	S:23, T:17S, R:31E			GRAYBURG JACKSON	SR-Q-G-SA	0	Active
30-015-10770	WISER OIL CO (THE) SKELLY UNIT	038	EDDY	S:23, T:17S, R:31E	Jan 1967	Dec 1967	GRAYBURG JKSN SR-Q-G-SA(DO NOT USE)		3,910	Injection Well
30-015-10770	FOREST OIL CORP SKELLY UNIT	038	EDDY	S:23, T:17S, R:31E			GRAYBURG JACKSON	SR-Q-G-SA	3,910	Injection Well
				S:23,						

30-015-22253	FOREST OIL CORP	SKELLY UNIT	119	EDDY	T-17S, R-31E	Jan 1993	Apr 1996	GRAYBURG JACKSON	SR-Q-G-SA	Temporarily Abandoned
30-015-22255	FOREST OIL CORP	SKELLY UNIT	121	EDDY	S:23, T-17S, R-31E	Jan 1993	May 2006	GRAYBURG JACKSON	SR-Q-G-SA	2,600 Injection Well
30-015-22484	FOREST OIL CORP	SKELLY UNIT	141	EDDY	S:23, T-17S, R-31E	Sep 1993	May 2008	GRAYBURG JACKSON	SR-Q-G-SA	2,700 Active
30-015-22507	FOREST OIL CORP	SKELLY UNIT	139	EDDY	S:23, T-17S, R-31E	Jan 1993	May 2008	GRAYBURG JACKSON	SR-Q-G-SA	2,680 Pumping
30-015-22509	FOREST OIL CORP	SKELLY UNIT	140	EDDY	S:23, T-17S, R-31E	Jan 1993	May 2008	GRAYBURG JACKSON	SR-Q-G-SA	2,701 Active
30-015-22510	FOREST OIL CORP	SKELLY UNIT	142	EDDY	S:23, T-17S, R-31E	Jan 1993	May 2008	GRAYBURG JACKSON	SR-Q-G-SA	2,650 Pumping
30-015-22513	FOREST OIL CORP	SKELLY UNIT	143	EDDY	S:23, T-17S, R-31E	Feb 1993	May 2008	GRAYBURG JACKSON	SR-Q-G-SA	2,650 Temporarily Abandoned
30-015-22520	FOREST OIL CORP	SKELLY UNIT	146	EDDY	S:23, T-17S, R-31E	Jan 1993	May 2008	GRAYBURG JACKSON	SR-Q-G-SA	2,646 Pumping
30-015-28949	FOREST OIL CORP	SKELLY UNIT	228	EDDY	S:23, T-17S, R-31E	Oct 1996	May 2008	GRAYBURG JACKSON	SR-Q-G-SA	4,005 Active
30-015-28950	FOREST OIL CORP	SKELLY UNIT	253	EDDY	S:23, T-17S, R-31E	Nov 1996	May 2008	GRAYBURG JACKSON	SR-Q-G-SA	4,000 Pumping
30-015-28974	FOREST OIL CORP	SKELLY UNIT	256	EDDY	S:23, T-17S, R-31E	Nov 1996	May 2008	GRAYBURG JACKSON	SR-Q-G-SA	4,050 Pumping
30-015-29032	FOREST OIL CORP	SKELLY UNIT	240	EDDY	S:23, T-17S, R-31E	Nov 1996	May 2008	GRAYBURG JACKSON	SR-Q-G-SA	4,050 Active
30-015-29033	FOREST OIL CORP	SKELLY UNIT	241	EDDY	S:23, T-17S, R-31E	Dec 1996	May 2008	GRAYBURG JACKSON	SR-Q-G-SA	4,000 Pumping
30-015-29034	FOREST OIL CORP	SKELLY UNIT	254	EDDY	S:23, T-17S, R-31E	Jan 1997	May 2008	GRAYBURG JACKSON	SR-Q-G-SA	4,050 Pumping
30-015-29183	FOREST OIL CORP	SKELLY UNIT	243	EDDY	S:23, T-17S, R-31E	Feb 1997	May 2008	GRAYBURG JACKSON	SR-Q-G-SA	4,050 Pumping
					S:23,					

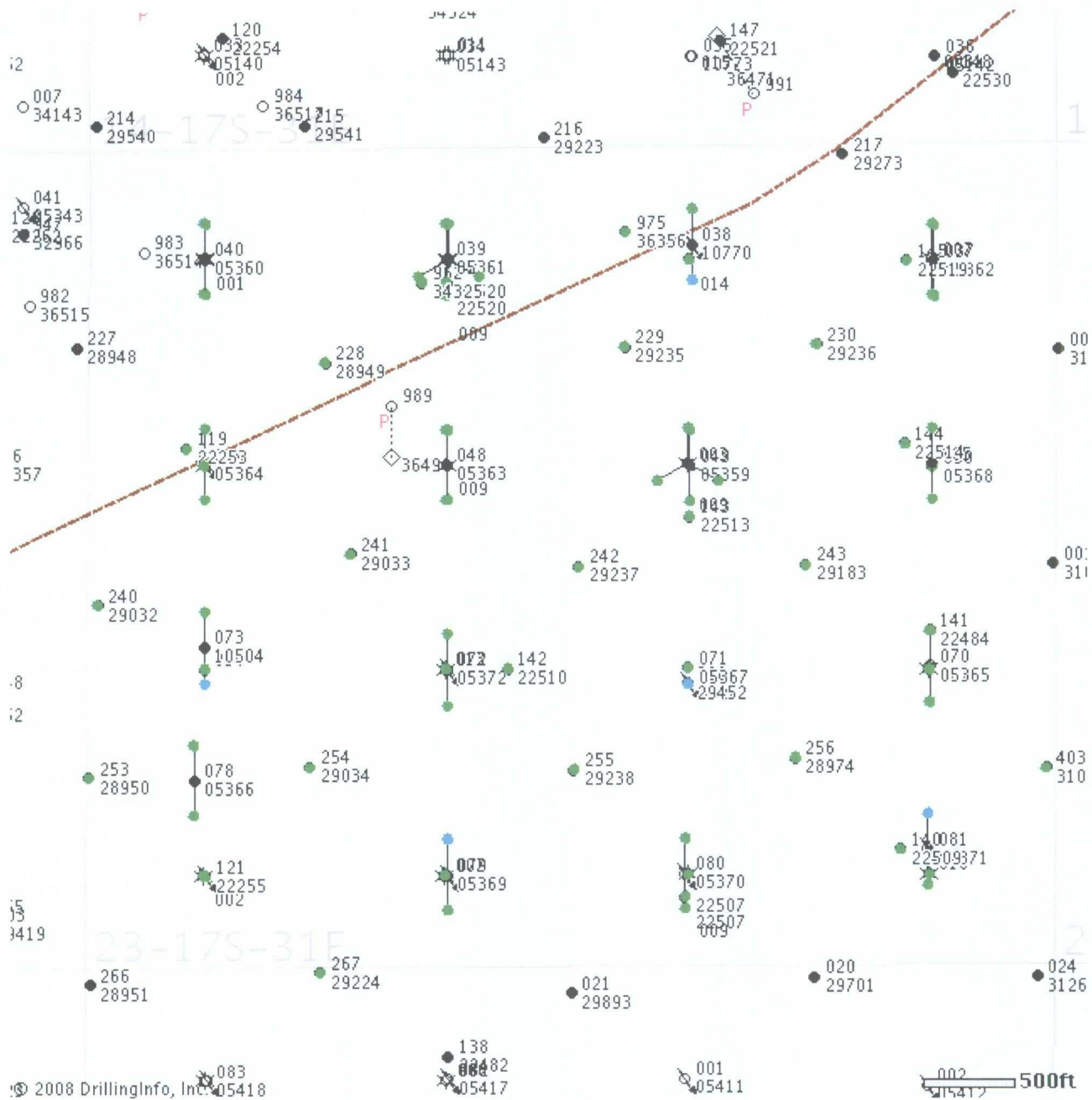
30-015-29224	FOREST OIL CORP	SKELLY UNIT	267	EDDY	T:17S, R:31E	Jan 1997	May 2008	GRAYBURG JACKSON	SR-Q-G-SA	3,950	Pumping
30-015-29235	FOREST OIL CORP	SKELLY UNIT	229	EDDY	S:23, T:17S, R:31E	Feb 1997	May 2008	GRAYBURG JACKSON	SR-Q-G-SA	4,025	Pumping
30-015-29236	FOREST OIL CORP	SKELLY UNIT	230	EDDY	S:23, T:17S, R:31E	Feb 1997	May 2008	GRAYBURG JACKSON	SR-Q-G-SA	4,100	Active
30-015-29237	FOREST OIL CORP	SKELLY UNIT	242	EDDY	S:23, T:17S, R:31E	Feb 1997	May 2008	GRAYBURG JACKSON	SR-Q-G-SA	4,025	Temporarily Abandoned
30-015-29238	FOREST OIL CORP	SKELLY UNIT	255	EDDY	S:23, T:17S, R:31E	Jan 1997	May 2008	GRAYBURG JACKSON	SR-Q-G-SA	4,100	Pumping
30-015-29452	FOREST OIL CORP	SKELLY UNIT	300	EDDY	S:23, T:17S, R:31E	Jan 2001	May 2006	GRAYBURG JACKSON	SR-Q-G-SA	4,050	Injection Well
30-015-31069	FOREST OIL CORP	SKELLY UNIT	403	EDDY	S:23, T:17S, R:31E	Aug 2000	May 2008	GRAYBURG JACKSON	SR-Q-G-SA	4,100	Pumping
30-015-22519		SKELLY UNIT	145	EDDY	S:23, T:17S, R:31E			FREN	SEVEN RIVERS	2,650	Active
30-015-05368		SKELLY UNIT	050	EDDY	S:23, T:17S, R:31E	Jan 1967	Feb 1986	GRAYBURG JACKSON	SR-Q-G-SA	11,600	Active
30-015-22514		SKELLY UNIT	144	EDDY	S:23, T:17S, R:31E			FREN	SEVEN RIVERS	2,700	Active
30-015-05367		SKELLY UNIT	071	EDDY	S:23, T:17S, R:31E			GRAYBURG JACKSON	SR-Q-G-SA	3,848	Active
30-015-00000	SKELLY OIL CO	LEA A BTRY 1	001	EDDY	S:23, T:17S, R:31E	Jan 1954	Dec 1966	GRAYBURG JACKSON QUEEN GRB S A CTD			Active
30-015-00000	SKELLY OIL CO	LEA A BTRY 1	004	EDDY	S:23, T:17S, R:31E	Jan 1947	Dec 1966	GRAYBURG JACKSON QUEEN GRB S A CTD			Active
30-015-00000	SKELLY OIL CO	LEA B FED	001	EDDY	S:23, T:17S, R:31E	Jan 1954	Dec 1966	GRAYBURG JACKSON QUEEN GBR S A CTD			Active
30-015-00000	SKELLY OIL CO	LEA B FED	002	EDDY	S:23, T:17S, R:31E	Jan 1947	Dec 1966	GRAYBURG JACKSON QUEEN GBR S A CTD			Active
					S:23,						

DI Search Results (Printable Table)

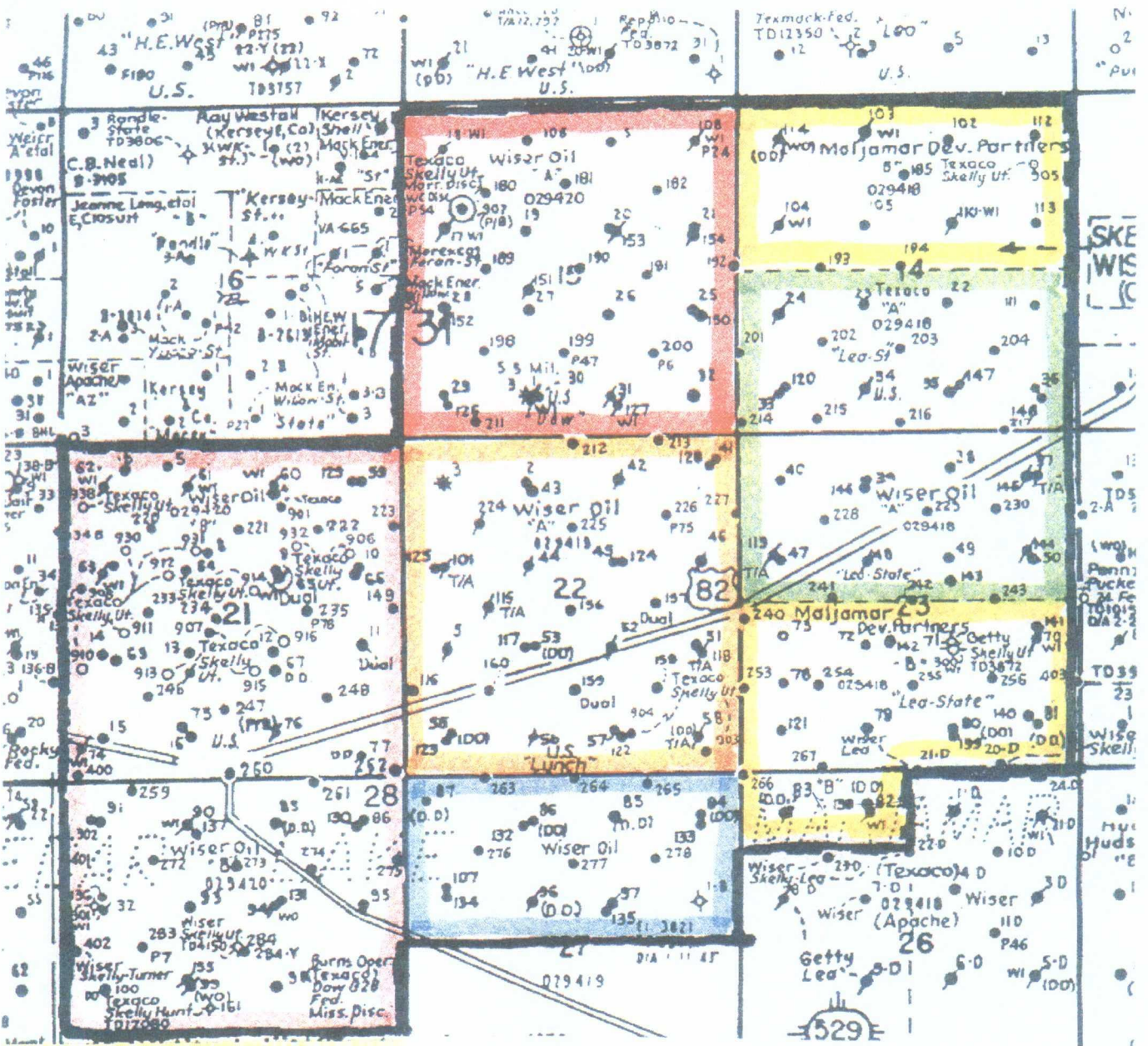
30-015-00000	SKELLY OIL CO	LEA B FED	007	EDDY	T:17S, R:31E	Apr 1960	Dec 1966	GRAYBURG JACKSON QUEEN GBR S A CTD	Active
30-015-00000	SKELLY OIL CO	LEA B FED	009	EDDY	S:23, T:17S, R:31E	May 1960	Dec 1966	GRAYBURG JACKSON QUEEN GBR S A CTD	Active
30-015-00000	SKELLY OIL CO	LEA B FED	010	EDDY	S:23, T:17S, R:31E	Jul 1960	Dec 1966	GRAYBURG JACKSON QUEEN GBR S A CTD	Active
30-015-00000	SKELLY OIL CO	LEA B FED	013	EDDY	S:23, T:17S, R:31E	Dec 1961	Dec 1966	GRAYBURG JACKSON QUEEN GBR S A CTD	Active
30-015-00000	SKELLY OIL CO	LEA B FED	014	EDDY	S:23, T:17S, R:31E	Dec 1961	Dec 1966	GRAYBURG JACKSON QUEEN GBR S A CTD	Active
30-015-00000	SKELLY OIL CO	LEA A BTRY 2 FED	003	EDDY	S:23, T:17S, R:31E	Jan 1947	Dec 1966	GRAYBURG JACKSON QUEEN GBR S A CTD	Active
30-015-00000	SKELLY OIL CO	LEA A BTRY 2 FED	005	EDDY	S:23, T:17S, R:31E	Jan 1947	Dec 1966	GRAYBURG JACKSON QUEEN GBR S A CTD	Active
30-015-00000	SKELLY OIL CO	LEA A BTRY 2 FED	007	EDDY	S:23, T:17S, R:31E	Jan 1947	Dec 1966	GRAYBURG JACKSON QUEEN GBR S A CTD	Active
30-015-00000	SKELLY OIL CO	LEA A BTRY 2 FED	009	EDDY	S:23, T:17S, R:31E	Jan 1947	Dec 1966	GRAYBURG JACKSON QUEEN GBR S A CTD	Active
30-015-00000	SKELLY OIL CO	LEA A	010	EDDY	S:23, T:17S, R:31E	Jan 1948	Dec 1966	GRAYBURG JACKSON	Active
30-015-00000	skelly oil company	lea a	009	EDDY	S:23, T:17S, R:31E	Jan 1953	Dec 1957	GRAYBURG JACSON	Active
30-015-00000	SINCLAIR OIL & GAS COMPANY	LEA A	009	EDDY	S:23, T:17S, R:31E	Jan 1956	Dec 1956	grayburg jackson pool	Active
30-015-00000	SKELLY OIL CO	LEA A	003	EDDY	S:23, T:17S, R:31E	Jan 1948	Dec 1964	GRAYBURG-JACKSON	Active
30-015-00000	SKELLY OIL CO	LEA A	004	EDDY	S:23, T:17S, R:31E	Jan 1948	Dec 1964	GRAYBURG-JACKSON	Active
30-015-00000	SKELLY OIL CO	LEA A	005	EDDY	S:23, T:17S, R:31E	Jan 1948	Dec 1964	GRAYBURG-JACKSON	Active

SR-Q-G-SA

30-015-00000	SKELLY OIL CO.	LEA A	007 EDDY	T:17S, R:31E	Jan 1948	Dec 1964	GRAYBURG-JACKSON	Active
30-015-00000	SKELLY OIL CO.	LEA A	009 EDDY	S:23, T:17S, R:31E	Jan 1948	Dec 1964	GRAYBURG-JACKSON	Active
30-015-34325	CHEVRON USA, INC.	SKELLY UNIT	962 EDDY	S:23, T:17S, R:31E	Jan 2006	May 2008	FREN	5,470 Active Permit
30-015-00000	SKELLY OIL CO	LEA A BATTERY	014 EDDY	S:23, T:17S, R:31E	Apr 1966	Dec 1966	GRAYBURG JACKSON QUEEN GBR CTD	Unknown
30-015-00000	SKELLY OIL CO	LEA A FED REP 3	001 EDDY	S:23, T:17S, R:31E	Jan 1964	Dec 1964		Active
30-015-36356	CHEVRON USA, INC.	SKELLY UNIT	975 EDDY	S:23, T:17S, R:31E			FREN (PADDOCK)	6,600 Active Permit
							PADDOCK	



© 2008 DrillingInfo, Inc. 05418



Section 28 + south of Hwy
 Caviness Cattle Co.
 1316 South Main
 Portales, NM 88130
 Allotment 6058
 Section 21 + North of Hwy
 Charles K. Martin
 P.O. Box 706
 Artesia, NM 88210
 Allotment 7004

Lease #	Description
NM-98122	Sec. 21 and outlined part of Sec. 28
NM-98121	N/2 Sec. 27
NM-98120	N/2 Sec. 14 and S/2 Sec. 23 part of Sec. 26
LC-029418 (a)	S/2 Sec. 14 and N/2 Sec. 23
LC-029419 (a)	Sec. 22
LC-029420 (a)	Sec. 15

Brooks, David K., EMNRD

From: Brooks, David K., EMNRD
Sent: Tuesday, September 09, 2008 2:28 PM
To: 'Phyllis Edwards'
Subject: Skelly Unit #613 NSL application

Dear Ms. Edwards

There are several apparent errors in this application.

The application states that the well location is 2310 FSL and 1650 FEL of 23-17S-31E. The attached form C-102 calls for a location 2410 FSL and 1600 feet FWL. I am inclined to assume that the C-102 is correct because 2310 FSL and 1650 FEL would be a standard location if the section is standard size and shape. But I need confirmation as to which are the correct calls.

The application also states that the well encroaches toward the NE/4 SW/4, which is not correct since that is the quarter-quarter where the well is located. That statement is not important, however, because you have stated that COG owns all of Section 23, and there is no encroachment on any other section regardless of which are the correct calls.

Finally, the application does not state the reason for siting this well at an unorthodox location.

Sincerely

David K. Brooks
Legal Examiner
505-476-3450

9/9/2008

Brooks, David K., EMNRD

From: Phyllis Edwards [PEdwards@conchoresources.com]
Sent: Tuesday, September 09, 2008 2:54 PM
To: Brooks, David K., EMNRD
Subject: RE: Skelly Unit #613 NSL application

Dear Mr. Brooks,

The correct location is 2410 FSL & 1600 FWL. The C-102 is correct. The location has to be drilled at a non standard location due to a buried pipeline and sand dunes. I am sorry for the errors. Thanks so much for reviewing this NSL application so promptly.

Phyllis Edwards

Regulatory Analyst



COG Operating LLC

Fasken Tower II

550 W. Texas Avenue, Suite 1300

Midland, TX 79701

432-685-4340 P

432-685-4399 F

pedwards@conchoresources.com

From: Brooks, David K., EMNRD [mailto:david.brooks@state.nm.us]
Sent: Tuesday, September 09, 2008 4:28 PM
To: Phyllis Edwards
Subject: Skelly Unit #613 NSL application

Dear Ms. Edwards

There are several apparent errors in this application.

The application states that the well location is 2310 FSL and 1650 FEL of 23-17S-31E. The attached form C-102 calls for a location 2410 FSL and 1600 feet FWL. I am inclined to assume that the C-102 is correct because 2310 FSL and 1650 FEL would be a standard location if the section is standard size and shape. But I need confirmation as to which are the correct calls.

The application also states that the well encroaches toward the NE/4 SW/4, which is not correct since that is the quarter-quarter where the well is located. That statement is not important, however, because you have stated that COG owns all of Section 23, and there is no encroachment on any other section regardless of which are the correct calls.

Finally, the application does not state the reason for siting this well at an unorthodox location.

Sincerely

9/9/2008