

GW – 388

**PERMITS,
RENEWALS,
& MODS
Application**

Lowe, Leonard, EMNRD

From: Lowe, Leonard, EMNRD
Sent: Wednesday, January 28, 2009 1:58 PM
To: 'Dunbar, Don G'
Cc: Bratcher, Mike, EMNRD; Price, Wayne, EMNRD; VonGonten, Glenn, EMNRD; Griswold, Jim, EMNRD
Subject: Artesia Inspection Letter
Attachments: Artesia Inspection Letter.pdf

Mr. Dunbar,


Please find the enclosed Letter for your records.

If you have any questions please contact me.

llowe

Leonard Lowe

Environmental Engineer
Oil Conservation Division/EMNRD
1220 S. St. Francis Drive
Santa Fe, N.M. 87505
Office: 505-476-3492
Fax: 505-476-3462
E-mail: leonard.lowe@state.nm.us
Website: <http://www.emnrd.state.nm.us/ocd/>



New Mexico Energy, Minerals and Natural Resources Department

Bill Richardson

Governor
Joanna Prukop
Cabinet Secretary
Reese Fullerton
Deputy Cabinet Secretary

Mark Fesmire
Division Director
Oil Conservation Division



January 28, 2009

Mr. Don Dunbar
Environmental Project Manager
515 Post Oak Boulevard
Houston TX 77027

**Re: Inspection of Artesia Service Company
Weatherford U.S. Limited Partnership
2404 N. Parkland Ave. Artesia, Oil and Gas Service Company
Eddy County, New Mexico**

The New Mexico Oil Conservation Division (NMOCD) Environmental Bureau performed an onsite inspection of the Artesia Weatherford completion services facility located in SW/4 SW/4 of Section 33, Township 16 South, Range 26 East, NMPM, Eddy County, New Mexico on January 22, 2009.

Don Dunbar, Jim Griswold and Leonard Lowe were on site for the inspection.

The overall facility is in good condition with a small amount of fluids and waste streams. A small below grade tank was identified on site. The total volume amount of the tank is less than 60 gallons and receives discharge water from a small steam cleaning operation.

The OCD has concluded that this facility will **not require a discharge plan permit** at this time due to the small amount of fluids and waste onsite. The below grade tank is volumetrically small. The OCD will recommend that the below grade tank be cleaned and hydrostatically tested annually until the tank is taken out of service. A record of these tests shall be kept on site. If Weatherford decides to close this below grade tank proper closure of the tank shall be adhered to. If the tank loses integrity a remediation plan shall be administered. Inform the OCD when this tank is removed from service. This facility will be tracked under GW-388 noted as an unpermitted facility.

The New Mexico Oil Conservation Division reserves the right to permit any facility it finds necessary to protect the State of New Mexico's groundwater.

If there are any questions regarding this matter, please do not hesitate to contact me at (505) 476-3492 or leonard.lowe@state.nm.us.

Sincerely,



Oil Conservation Division * 1220 South St. Francis Drive

* Santa Fe, New Mexico 87505

* Phone: (505) 476-3440 * Fax (505) 476-3462* <http://www.emnrd.state.nm.us>



January 28, 2009

Page 2

Leonard Lowe
Environmental Engineer

LRL/lrl

xc: Mike Bratcher, Environmental OCD District II, Artesia
Wayne Price, OCD Environmental Bureau Chief, Santa Fe
Glenn Von Gonten, OCD Hydrologist, Santa Fe
Jim Griswold, OCD Hydrologist, Santa Fe

ACKNOWLEDGEMENT OF RECEIPT
OF CHECK/CASH

I hereby acknowledge receipt of check No. _____ dated 9/10/08

or cash received on _____ in the amount of \$ 100⁰⁰

from Weatherford

for GW-388

Submitted by: Lawrence Romero Date: 10/1/08

Submitted to ASD by: Lawrence Romero Date: 10/1/08

Received in ASD by: _____ Date: _____

Filing Fee ☒ New Facility _____ Renewal _____

Modification _____ Other _____

Organization Code 521.07 Applicable FY 2004

To be deposited in the Water Quality Management Fund.

Full Payment _____ or Annual Increment _____

Weatherford International Inc.
515 Post Oak Blvd., Suite 600
Houston, TX 77027



September 19, 2008

Oil Conservation Division
1220 South St. Francis Drive
Santa Fe, NM 87505

Re: OCD Discharge Plan Applications
Weatherford International Service Company Facilities
Artesia & Hobbs, NM

To Whom It May Concern:

Weatherford International operates a number of Oil Field Service Company Facilities in New Mexico. Enclosed are permit applications (and copies) for four of those facilities and a renewal application for an existing permit (GW-075). These facilities are:

Weatherford Wellhead	1802 W Marland, Hobbs
Weatherford Completions	2117 N French Dr, Hobbs
Weatherford Completions GW-388	2404 N Parkland, Artesia
Weatherford Fishing & Rental (renewal)	3000 West County Road, Hobbs
Weatherford Fishing & Rental (new location)	3215 N. Enterprise, Hobbs

Additional copies have been submitted to the district offices in Hobbs and Artesia. There is also a single check attached in the amount of \$500 which represents the \$100 per site application fee.

An additional application will be submitted shortly for Weatherford Wireline in Hobbs. Please contact me at 713-693-7740 with any questions

Sincerely:

A handwritten signature in black ink, appearing to read 'Don Dunbar', is written over a white background.

Don Dunbar
Environmental Project Manager
515 Post Oak Boulevard
Houston, TX 77027

Direct: 713-693-7740
Mobile: 713-416-4975
Fax: 713-693-4498

don.dunbar@weatherford.com

District I
1625 N. French Dr., Hobbs, NM 88240
District II
1301 W. Grand Avenue, Artesia, NM 88210
District III
1000 Rio Brazos Road, Aztec, NM 87410
District IV
1220 S. St. Francis Dr., Santa Fe, NM 87505

State of New Mexico
Energy Minerals and Natural Resources
Oil Conservation Division
1220 South St. Francis Dr.
Santa Fe, NM 87505

Revised June 10, 2003

Submit Original
Plus 1 Copy
to Santa Fe
1 Copy to Appropriate
District Office

**DISCHARGE PLAN APPLICATION FOR SERVICE COMPANIES, GAS PLANTS,
REFINERIES, COMPRESSOR, GEOTHERMAL FACILITIES
AND CRUDE OIL PUMP STATIONS**

(Refer to the OCD Guidelines for assistance in completing the application)

☒ New ☐ Renewal ☐ Modification

1. Type: Service Company GW-388
2. Operator: Weatherford Completion Services, Weatherford International, Inc.
Address: 2404 N Parkland Avenue, Artesia, NM
Contact Person: Mr. Mitch Johnson Phone: 575-476-2122
3. Location: SW /4 SW /4 Section 33 Township 16S Range 26E
Submit large scale topographic map showing exact location.
4. Attach the name, telephone number and address of the landowner of the facility site.
5. Attach the description of the facility with a diagram indicating location of fences, pits, dikes and tanks on the facility.
6. Attach a description of all materials stored or used at the facility.
7. Attach a description of present sources of effluent and waste solids. Average quality and daily volume of waste water must be included.
8. Attach a description of current liquid and solid waste collection/treatment/disposal procedures.
9. Attach a description of proposed modifications to existing collection/treatment/disposal systems.
10. Attach a routine inspection and maintenance plan to ensure permit compliance.
11. Attach a contingency plan for reporting and clean-up of spills or releases.
12. Attach geological/hydrological information for the facility. Depth to and quality of ground water must be included.
13. Attach a facility closure plan, and other information as is necessary to demonstrate compliance with any other OCD rules, regulations and/or orders.
14. CERTIFICATION: I hereby certify that the information submitted with this application is true and correct to the best of my knowledge and belief.

Name: Don Dunbar

Title: Environmental Project Manager

Signature: 

Date: 9-16-08

E-mail Address: don.dunbar@weatherford.com

Environmental Contractors Incorporated

Engineering/Environmental/Wastewater/Consulting Services

**Weatherford U.S.,
Limited Partnership**

Discharge Plan *GW-388*

Weatherford Completion Services

2404 N. Parkland Avenue

Artesia, New Mexico

TABLE OF CONTENTS

1. Type of Oilfield Service Facility.....	1-1
2. Facility Operator	2-1
3. Facility Location	3-1
4. Landowner of Facility.....	4-1
5. Facility Description.....	5-1
6. List of Materials Stored or Used at the Facility.....	6-1
7. Present Sources of Effluent and Waste Solids	7-1
8. Current Liquid and Solids Collection/Treatment/Disposal Procedures	8-1
8.1 Wash Water Collection/Treatment/Disposal	8-1
8.2 Solids/Sludges from Sumps	8-1
8.3 Used Antifreeze	8-2
8.4 Solvent Use.....	8-2
8.5 Shop Oil, Used Lubrication and Motor Oils	8-3
8.6 Paint Wastes.....	8-3
8.7 Other Solid Wastes.....	8-2
9. Proposed Modifications to Existing Collection/Treatment/Disposal Systems	9-1
10. Inspection Maintenance and Reporting.....	10-1
10.1 Inspections	10-1
10.1.1 Wash Water Collection System.....	10-1
10.1.2 Container Storage Areas	10-1
10.2 Containment of Precipitation and Runoff.....	10-2
11. Spill/Leak Prevention and Reporting Procedures	11-1
11.1. Containment and Cleanup.....	11-1
11.2. Reporting of Emergency Incidents	11-1

12. Site Characteristics.....	12-1
12.1. Nearby Water Bodies/Watercourses.....	12-1
12.2. Water Wells	12-1
12.3. Groundwater	12-1
12.4. Stratigraphy/Soils	12-1
12.5. Flooding Potential	12-1
13. Other Compliance Information	13-1

List of Figures

Site Location Map.....	1
Artesia Area Street Map	2
Site Plot Plan	3

List of Tables

Products Used/Stored at Facility	1
--	---

APPENDICES

- A Waste Containment Inspection Log
- B OCD Notification Reporting Form
Weatherford Spill Report Form

1. Type of Oilfield Service Facility

Weatherford U.S., Limited Partnership, is preparing this Discharge Plan for their oilfield service facility located at, 2404 N. Parkland Avenue in Artesia, New Mexico in compliance with the New Mexico Oil and Gas Act and the Water Quality Act. The New Mexico Oil Conservation Division (OCD) administers these regulations with approval of the New Mexico Water Quality Control Commission (WQCC). This Discharge Plan sets forth the details of the methods and techniques to be used at the facility to prevent unauthorized discharge of liquids and ensure compliance with WQCC and OCD regulations. The following sections provide the Discharge Plan information required by the ODC for Oilfield Service Facilities.

The Weatherford facility covered by this Discharge Plan provides completion services for the exploration and production of crude oil and natural gas.

The facility does not perform any on-site waste disposal. All wastes produced by the facility are transported off-site by licensed transporters and recycled or disposed by permitted operators.

2. Facility Operator

The operator of the facility is:

Weatherford U.S., L. P.
515 Post Oak Boulevard, Suite 600
Houston, Texas 77027
(713) 693-4000

The Weatherford Completion Services Artesia location facility contact person is:

Mr. Mitch Johnson
2404 N. Parkland Avenue
Artesia, New Mexico 88210
(575) 746-2122

3. Facility Location

The facility is located at, 2404 N. Parkland Avenue, Artesia, New Mexico. The site is located in the SW / 4, of the SW / 4, of Section 33, Township 16 S, and Range 26 E in Eddy County, New Mexico. A USGS topographic map showing the approximate location of the facility is provided as Figure 1. However, the USGS map has not been revised since 1975 and the facility was not constructed until late 1980's. Figure 2 is an updated street map of Artesia illustrating the approximate location of the facility.

4. Landowner of Facility

The landowner is:

City of Artesia
Community Development
511 W. Texas Avenue
Artesia, NM 88210
Phone (575) 746-2122

5. Facility Description

The facility is located within the City of Artesia. Utilities at the facility include city water. Domestic waste is discharged into a septic tank and drain field located on the northwest area of the site. The facility is located on an approximately 2-acre parcel with one main 2,400 ft² steel building. The building was constructed in approximately 1989 is located on the west side of the site. The area used by the facility is fully fenced and gated except for the parking area around the front office area of the building. A site plot plan of the facility indicating the locations of the facility structures, containment areas and fencing is provided as Figure 3.

Completion Services maintains tools, supplies and materials used to provide their services.

Activities associated with these services include equipment warehousing, steam cleaning, repair and minor painting. Steam cleaning is performed outside of the facility in above grade steel container with sides and holding tank below for wash water collection. The steel container gravity discharges into a single chamber concrete sump. All discharged water from the steam cleaning operations is collected from the sump is pumped into an 8' x 8' x 6' above ground holding tank prior to pick-up and disposal or is treated by evaporation. The holding tank is located in a secondary concrete containment area of 15' x 19' with a 3' wall height. The concrete containment structure is slightly sloped to a valve where rainwater can be collected as well as any releases from the containment area. Unimpacted rainwater collected in the storage area will be released to the ground. Impacted rainwater will be drummed, tested and disposed of as appropriate. Any waste spilled within the containment area will be collected, tested and disposed of as appropriate.

The fenced yard is used primarily for equipment storage. Any waste spilled within the area will be collected, tested and disposed of as necessary. Storm water drainage is controlled by ground slope. However, most of the storm water infiltrates into the subsurface.

6. List of Materials Stored or Used at the Facility

Table 1 provides a list of materials currently used by the Weatherford Completion Services facility, the quantity stored; storage location and the method of Disposal are listed for each material. MSDS sheets for all chemical products are kept at the site.

7. Present Sources of Effluent and Waste Solids

A description of the waste generating processes and the quantity of waste generated is provided below.

Table 1

WASTE TYPE	COMPOSITION OR SOURCE	VOLUME PER MONTH	DISPOSAL NOTES
Truck Wastes	None	NA	NA
Truck/Tank Washing	None	NA	NA
Wash Water from Steam Cleaning of Equipment	Wash Water	100 gallons	Evaporation or IMW Transportation
Used Antifreeze	None	NA	NA
Shop Oil	None	NA	NA
Used Lubrication Hydraulic Oil and Motor Oils	None	NA	NA
Solvents	Safety Kleen (parts cleaner from inspection, repair activities)	20 gallons	Serviced and recycled by Safety Kleen
Paint Wastes	None	NA	NA
Other Waste Solids	Empty aerosol and lubricant containers	10 containers	Crushed and disposed through trash collection

8. Current Liquid and solids Collection / Treatment / Disposal Procedures

A description of the waste collection, treatment and disposal for each of the waste streams described in the previous section is provided below.

8.1. Wash Water Collection/Treatment

The wash water collection system is located on the southeast side of the shop. The collection system was designed to collect the wastewater generated during the steam cleaning of equipment/parts. Steam cleaning operations are performed in above ground containment system so that all liquids drain to a grated tank below. Wash water collected from the sump is pumped to an 8'x8'x6' holding tank. The holding tank is located in a secondary concrete containment area of 15'x19' with a 3' wall. Evaporation is the primary water treatment process.

8.2. Solids/Sludge from Sumps

Solids and sludge are produced during the steam cleaning of equipment and are captured in the sediment trap (steam cleaning holding tank) and sump. The sediment trap and sump wastes consist generally of a mixture of sand, grit and mud that has been minimally impacted with hydrocarbons. The steel above ground grates from the holding tank will be removed and sump material is shoveled out for disposal. The sludge is profiled and the drums are collected by truck and shipped to a licensed disposal center when needed.

8.3. Used Antifreeze

NA

8.4. Solvent Use

Safety Kleen parts cleaner is used to clean pipe threads and to remove grease and oil from parts during operations. The safety Kleen solvent is petroleum naphtha based solvent that is classified as hazardous waste. Safety Kleen solvent is supplied in 20-30-gallon drums that connect to capture trays and a recycle system to minimize the quantity of solvent use. When the current drum of solvent has reached its loading capacity of oil/grease, the unit is serviced by Safety Kleen.

The facility currently uses approximately 20-gallons of parts cleaner per month which is returned to Safety Kleen for recycling. Safety Kleen collects the used

solvent approximately every 30 days and transports the material by truck to the Safety Kleen recycling center.

8.5. Shop Oil, Used Lubrication and Motor Oils

NA

8.6. Paint Wastes

NA

8.7. Other Solid Wastes

Empty aerosol cans, lubricant, oil containers and miscellaneous materials are placed in an on-site dumpster for collection by truck. The materials in the dumpster are collected by a waste management company and transported to the local landfill for disposal. Scrap metal is collected in a bin and picked up by local metal recyclers. Any empty oil drums are reclaimed by the vendors who sold the products to Weatherford.

9. Proposed Modifications to Existing Collection / Treatment / Disposal Systems

None at this time.

10. Inspection, Maintenance and Reporting

The facility does not have any waste disposal units that require inspection, monitoring or reporting. Inspection, maintenance and leak detection will be performed monthly. The procedures to be used for the inspection of these areas are described in the following section.

10.1. Inspections

A description of the inspection procedures and inspection schedule for the waste recycling and treatment area are described below. A copy of an inspection log for the facility is included in Appendix B. In addition to scheduled inspections, most areas of the facility are observed on a day to day basis by the employees.

10.1.1. Wash Water Collection System

The above grade structures of the wastewater collection and treatment system are contained within a steel containment system and secondary concrete containment area. Inspection will be recorded in an inspection log kept at the facility.

If system piping is leaking or is in need of repair, the source of the release will be determined and promptly repaired.

10.2. Containment of Precipitation and Runoff

Steam cleaning operations are performed outside on a concrete pad area with a sump. The sump has a float controlled pump to discharge wash water to the holding tank. Rainfall greater than 0.25-inches containment area will be inspected and if necessary and unimpacted, will be released from the secondary containment area.

Repair and minor painting of equipment are performed inside the shop. Precipitation or storm water runoff does not come into contact with these process areas.

11. Spill/Leak Prevention and Reporting Procedures

11.1. Containment and Cleanup

Weatherford's corporate policy is to comply with all applicable environmental laws and regulations. In addition, Weatherford has built, maintained and upgraded facilities in order to minimize impacts to the environment. Weatherford personnel are present at the site during most of the daylight hours and personnel receive training in spill containment and cleanup to minimize impacts to the environment. Releases of materials require reporting to Weatherford's Corporate Environmental Department and to applicable government agencies.

Leaks, spills and drips will be handled as follows:

- Report all spill > 2 gallons to the Weatherford's Corporate Environmental Department
- Small spills on pavement will be absorbed with absorbent pads or granular oil absorbent material. The pads/oil absorbents will be placed into drums for off-site disposal by an approved disposal contractor.
- Small spills on soil will be shoveled into drums for off-site disposal by an approved disposal contractor.
- Large spills will be contained with temporary berms. Free liquids will be pumped into drums. Contaminated soils will be placed into drums or other leak-proof container and disposed as applicable. Additional characterization and removal of impacted soils will be performed on as needed basis.

The facility maintains spill kits that contain absorbent pads, granular absorbent, small booms and drums to temporarily store impacted material. The largest liquid container maintained at the site is the holding tank which measures 8' x 8' x 6' located outside in the southeast corner of the shop. All drums will be stored either in the shop or inside the container storage areas.

11.2. Reporting of Emergency Incidents

WQCC Rule 1203A requires that in the event of a release of oil or other water contaminants in such quantities as may be detrimental to human health, animal or plant life or unreasonably interfere with the public welfare or use of property, notification will be given to the OCD. OCD personnel recommend notification is given if five (5) gallons or more of a refined hydrocarbon product is released.

Notification is required if more than five (5) barrels of material is released per NMOCD Rule 116. Notification will also be given if any contaminant reaches a watercourse or enters a stream or river.

Notification will be given orally to the OCD District Office as soon as possible, but no later than 24 hours, after the discharge. Notification will consist of the following information:

- The name, address and telephone number of the facility and the name and phone number of the person in charge of the facility;
- The date, time and duration of the discharge;
- The source and cause of the discharge;
- A description of the discharge including chemical composition;
- The estimated volume of the discharge, and
- The actions taken to mitigate immediate damage from the discharge.

Within ten days of the discharge, the operator will also submit, in duplicate, the above information in writing to OCD District Office.

The OCD District Office is located at the following address and phone number.

1301 W. Grand Avenue
Artesia, New Mexico 88210
Phone: (575) 748-1283
Fax: (575) 748-9720

An OCD Notification of Fire, Breaks, Spills, Leaks and Blowouts form illustrating the requested notification information is provided as Appendix C. This form will be completed by the Facility Manager or his designee for all reportable releases. A copy of the form will be transmitted to the OCD District Office, Weatherford Corporate Environmental in Houston, Texas and a copy will be retained at the facility.

12. Site Characteristics

12.1. Nearby Water Bodies/Watercourses

There are no main water bodies within one mile of the facility.

12.2. Water Wells

A search was performed to determine if any water wells are located within 0.25 mile of the facility perimeter. The search indicated no wells within 0.25 miles of the facility perimeter. The closest identified well is located approximately 0.4 miles north of the facility (NW1/4 of SW1/4 of SE 1/4 Section 33, T16S, R26E). This well is listed as a domestic well and has a completion depth of 200 feet and water depth of 60 feet. The location of this well is shown on Figure 1.

12.3. Groundwater

No wells are present on-site to provide groundwater data. Groundwater data from well located in section 33, T 16S, R 26E indicated that groundwater is potentially present beneath the facility at a depth of approximately 40 to 70 feet below grade. No TDS information for the groundwater was available; however, the groundwater is of sufficient quality to be used for domestic purposes and human consumption and is assumed to contain less than 10,000 mg/l TDS.

Available information indicates that groundwater flow is generally to the east southeast.

12.4. Stratigraphy/Soils

The soils in the area include loam, sandy loam, clay loam, and clay. The loam soils are thickest and most productive soils. Well logs indicate that the water bearing formation consists of sand and gravel conglomerate.

12.5. Flooding Potential

The facility is not within the any flood plain area, several intermittent streams (arroyos) are located west and east of the facility, however, these arroyos are located at an elevation at least 10 feet lower than the facility. The facility does not appear to be located within a federally designated 100 or 500-year flood plain. As such, special flood protection measures are not required.

13. Compliance With All NMOCD Rules, Regulations and/or Orders

The facility does not perform any on-site disposal or have any waste disposal units. All products and wastes are contained to prevent accidental discharge to the environment and all wastes are transported off-site for recycling or disposal. In the event of a release, Weatherford US, Limited Partnership will comply with the requirements of NMOCD Rule 116 and WQCC Section 1203 spill reporting. In the event that Weatherford were to close the 2404 N. Parkland Avenue a comprehensive closure plan for the facility would be filed with the NMOCD.

LIST OF FIGURES

SITE LOCATION MAP

ARTESIA AREA STREET MAP

SITE PLOT PLAN

USGS 4 km N of Artesia, New Mexico, United States 01 Jul 1975

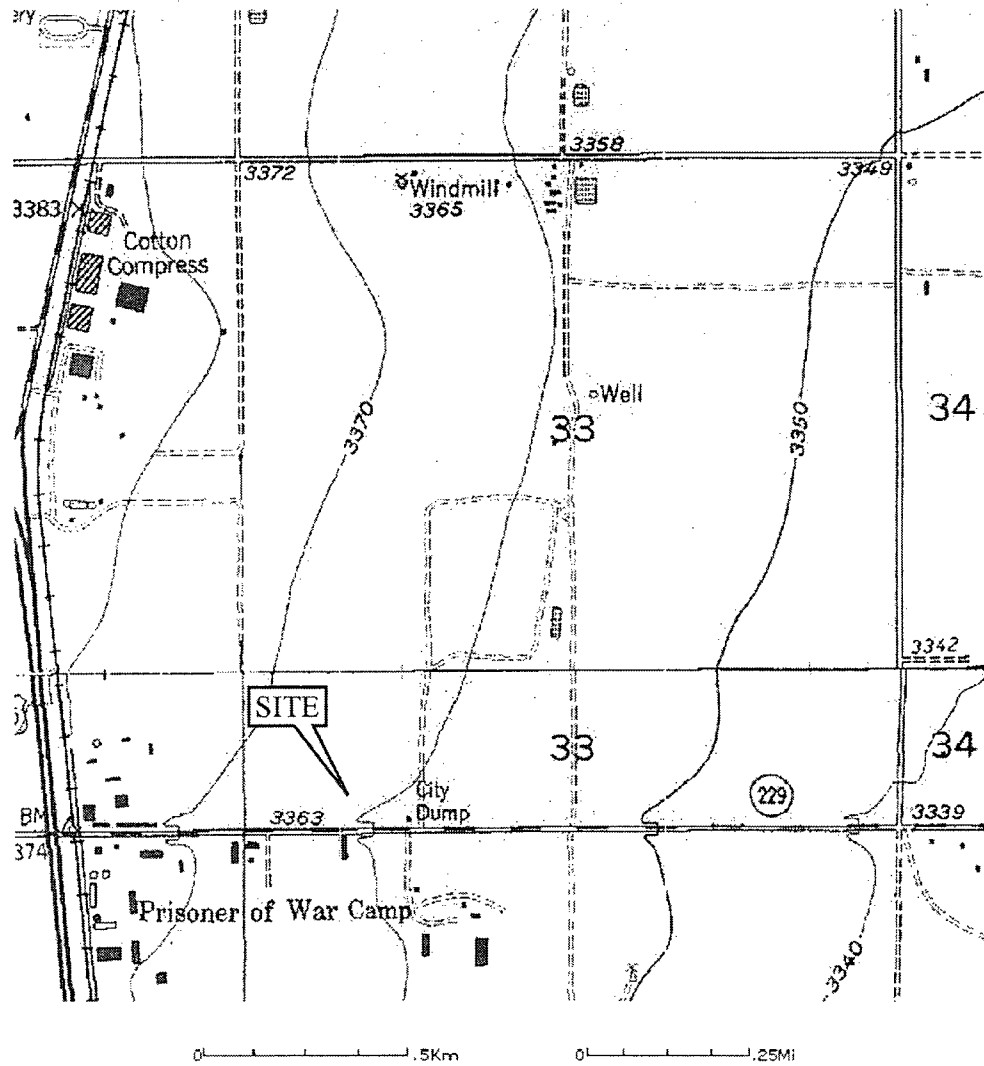
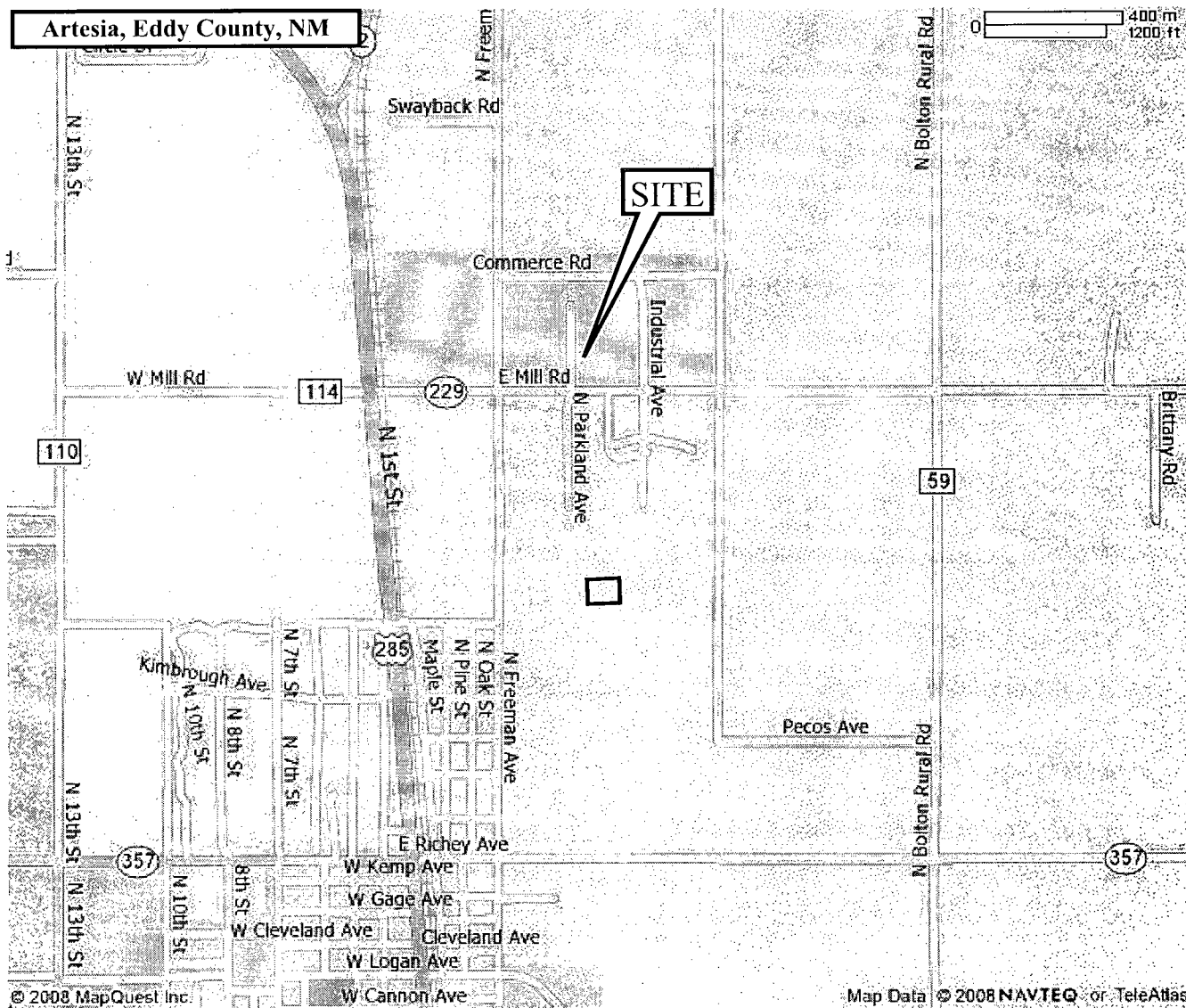


Image courtesy of the U.S. Geological Survey

<p>TOPOGRAPHIC MAP</p> <p>USGS 7.5 Minute Topographic Map Artesia, NM Quadrangle</p>	<p>SUBJECT SITE</p> <p>2404 N. Parkland Drive Artesia, Eddy County, NM</p>	<p>Environmental Contractors Inc. 931 East 800 North Mapleton, Utah 84664-3769</p>	<p>↑ N</p>
---	---	--	----------------



ARTESIA AREA STREET MAP

Weatherford Completion Services

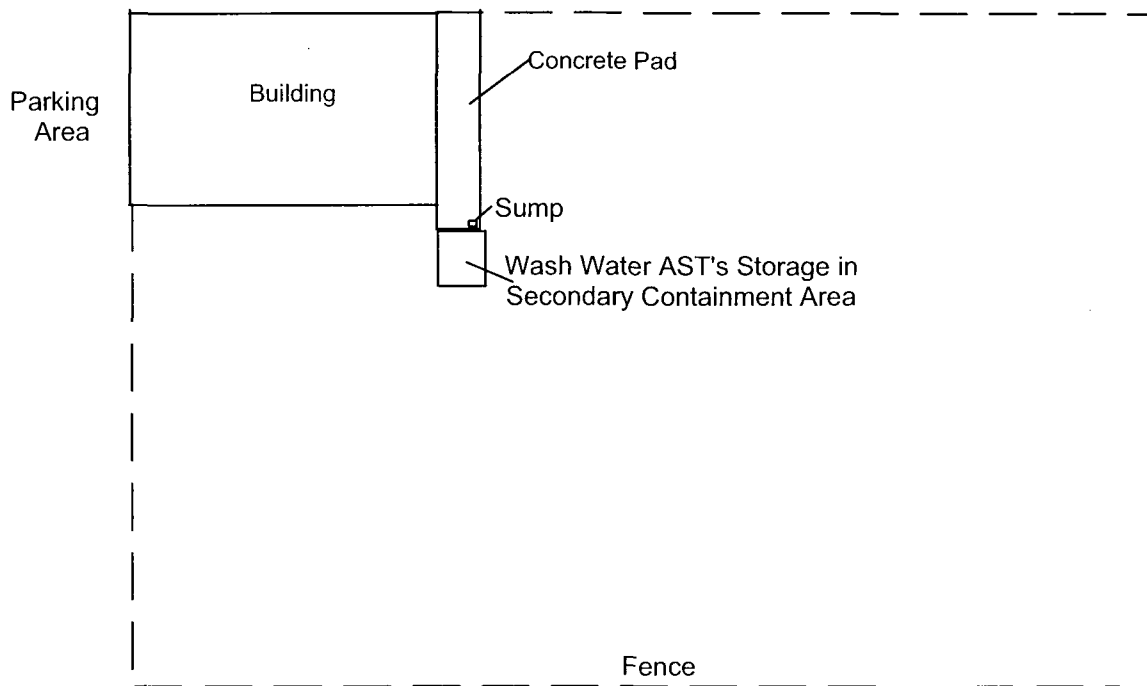
2404 N. Parkland Drive
Artesia Eddy County NM

Environmental Contractors Incorporated
931 East 800 North
Mapleton, Utah 84664-3769





N. Parkland Ave



NOT TO SCALE



**ENVIRONMENTAL
CONTRACTORS**
INCORPORATED

931 EAST 800 SOUTH, MAPLETON, UT 84664
TEL (801) 491-3455 FAX (801) 491-3456

**Weatherford
Completion Services**
2404 N. Parkland Ave.
Artesia, New Mexico

SITE PLOT PLAN

3-13-08

**FIGURE
3**

APPENDIX A

WASTE CONTAINMENT INSPECTION LOG

Facility Maintenance Checklist

Facility: Weatherford Completion Services
Address: 2404 N. Parkland Avenue
 Artesia, NM 88210

Facility ID #: _____
Month of: _____

[illegible][illegible]

Send copy to Weatherford, Health, Safety and Environmental Department
515 Post Oak Blvd Suite 600, Houston, TX 77056 or Fax to (713) 693-4498.

GENERAL INSTRUCTIONS FOR COMPLETING THE FACILITY MAINTENANCE CHECKLIST

Each box of the inspection sheet (other than Date and Initials) should contain one of the following notations:

✓ - Area is in compliance with Company Policy and Procedures Manual;

X - This area needs attention; or

NA - This box is not applicable to the facility.

If the notation X is entered in a box, use the Comments/Recommendations section to describe a corrective action for the problem. For the ✓ to be entered, all of the statements listed below for that area must be true.

WASTE CONTAINMENT AREA / PRODUCT STORAGE AREA / CHEMICAL STORAGE AREA

- ✓ Containers are in good condition, not leaking or deteriorating;
- ✓ Containers are compatible with the material being stored and labeled to identify their contents;
- ✓ Containers are closed and the bungs or lids are tightly sealed;
- ✓ Containers are stored in a safe manner (away from sources of ignition, away from traffic, at least 50 feet from the property line, at least 100 feet from buildings on neighboring property, etc.);
- ✓ Containers are within a secondary containment area under a roof or other cover;
- ✓ Storage takes place in a designated area which is posted as "No Smoking";
- ✓ Grounding devices are used when transferring flammable liquids into or between containers;
- ✓ Emergency and spill control plans, equipment and supplies, including alarms, telephones, fire extinguishers, personal protective equipment and absorbents are readily available; and
- ✓ The number of exits provided should allow for safe evacuation in case of an emergency.
- ✓ Storage areas are marked with warning signs listing the principal hazards of the wastes stored;
- ✓ Security precautions have been implemented to limit access to authorized personnel only;
- ✓ Aisle space allows for unobstructed movement of workers and equipment at all times;
- ✓ Ignitable wastes are protected from possible ignition sources;
- ✓ Reactive wastes are separated to prevent reactions; and
- ✓ Adequate ventilation is provided for enclosed accumulation areas.

PIPE COATING AREA

- ✓ Coatings are applied using airless application methods to minimize airborne contamination;
- ✓ Coatings are applied in areas having secondary containment;
- ✓ Spray painting operations without vapor recovery systems are no closer than 50 feet from the property line and are at least 250 feet from adjoining property buildings;
- ✓ Coatings and thinners are properly stored in an approved flammable storage area;
- ✓ Solidified drippings from the coating process are managed to prevent impact to surface soils;
- ✓ Coatings, thinners and adhesives are collected in DOT drums or containers, properly labeled, and stored in the drum storage area; and
- ✓ Empty containers are properly disposed of and not allowed to accumulate.

WASTE WATER TREATMENT SYSTEM

- ✓ Pipes, pumps and seals are not leaking;
- ✓ Adequate supplies are on hand (e.g., paper filters, carbon, alum, sodium hypochlorite, quick-release soap); and
- ✓ All equipment is properly maintained according to the manufacturer's instructions.

DRAINAGE/COLLECTION SYSTEMS

- ✓ All grates and covers are in place; and
- ✓ Drains are not blocked and flow freely.

YARD INSPECTION

- ✓ All general housekeeping requirements are being met.

CAUSTIC VAT

- ✓ Vat is of double-wall construction or placed in a containment area;
- ✓ Vat is no closer than 50 feet from the property boundary and is at least 150 feet from adjoining property buildings;
- ✓ When equipment is removed from the vat it is drained thoroughly over the vat to ensure that no more than minimal amounts of caustic spill onto the cleaning slab and/or enter the wastewater sump;
- ✓ Drums used to contain caustic or spent caustic corrosion-resistant or lined to prevent corrosion;
- ✓ Drums used to contain caustic or spent caustic are properly sealed;
- ✓ Full drums of spent caustic are properly labeled and moved to the waste drum storage area; and
- ✓ If caustic vats are drained, they are refilled with sodium metasilicate solution, not sodium hydroxide.

PAINT BOOTHS AND BLASTING BOOTHS

- ✓ All fans function properly and are properly maintained;
- ✓ Filters are changed at required intervals; and
- ✓ Floor is free of debris.

APPENDIX B

ODC NOTIFICATION FORM

WEATHERFORD SPILL REPORT FORM

District I
1625 N. French Dr., Hobbs, NM 88240
District II
1301 W. Grand Avenue, Artesia, NM 88210
District III
1000 Rio Brazos Road, Aztec, NM 87410
District IV
1220 S. St. Francis Dr., Santa Fe, NM 87505

State of New Mexico
Energy Minerals and Natural Resources
Oil Conservation Division
1220 South St. Francis Dr.
Santa Fe, NM 87505

Form C-141
Revised October 10, 2003

Submit 2 Copies to appropriate
District Office in accordance
with Rule 116 on back
side of form

Release Notification and Corrective Action

OPERATOR

☐ Initial Report ☐ Final Report

Name of Company	Contact	
Address	Telephone No.	
Facility Name	Facility Type	
Surface Owner	Mineral Owner	Lease No.

LOCATION OF RELEASE

Unit Letter	Section	Township	Range	Feet from the	North/South Line	Feet from the	East/West Line	County
-------------	---------	----------	-------	---------------	------------------	---------------	----------------	--------

Latitude _____ Longitude _____

NATURE OF RELEASE

Type of Release	Volume of Release	Volume Recovered
Source of Release	Date and Hour of Occurrence	Date and Hour of Discovery
Was Immediate Notice Given? <input type="checkbox"/> Yes <input type="checkbox"/> No <input type="checkbox"/> Not Required	If YES, To Whom?	
By Whom?	Date and Hour	
Was a Watercourse Reached? <input type="checkbox"/> Yes <input type="checkbox"/> No	If YES, Volume Impacting the Watercourse.	

If a Watercourse was Impacted, Describe Fully.*

Describe Cause of Problem and Remedial Action Taken.*

Describe Area Affected and Cleanup Action Taken.*

I hereby certify that the information given above is true and complete to the best of my knowledge and understand that pursuant to NMOCD rules and regulations all operators are required to report and/or file certain release notifications and perform corrective actions for releases which may endanger public health or the environment. The acceptance of a C-141 report by the NMOCD marked as "Final Report" does not relieve the operator of liability should their operations have failed to adequately investigate and remediate contamination that pose a threat to ground water, surface water, human health or the environment. In addition, NMOCD acceptance of a C-141 report does not relieve the operator of responsibility for compliance with any other federal, state, or local laws and/or regulations.

OIL CONSERVATION DIVISION

Signature:	Approved by District Supervisor:		
Printed Name:	Approval Date:		
Title:	Expiration Date:		Attached <input type="checkbox"/>
E-mail Address:	Conditions of Approval:		
Date:	Phone:		

* Attach Additional Sheets If Necessary

WEATHERFORD SPILL REPORT FORM

FACILITY ADDRESS: 2404 N. Parkland Avenue, Artesia, NM 88210

FACILITY ID NUMBER: _____ PHONE NO. (575) 746-8792

WEATHERFORD CORPORATE EMPLOYEE CONTACTED: _____

***Report any spill, release or environmental hazard immediately to
the Health, Safety & Environmental Dept. - Houston, Texas or call the
ENVIRONMENTAL HELP LINE - (713) 439-9595.**

DATE AND TIME OF RELEASE: _____

*SPILL REPORTED TO AGENCY: _____

*NAME OF AGENCY REPORTED TO: _____

*AGENCY REPRESENTATIVE CONTACTED: _____

TYPE OF MATERIAL SPILLED: _____

AMOUNT OF MATERIAL SPILLED: _____

AREA COVERED BY SPILL: _____

ACTIONS TAKEN TO IMMEDIATELY ABATE HAZARDOUS SITUATION: _____

SUMMARY OF SPILL - INCLUDE DETAILS OF ALL ACTIVITIES: _____

* Spills are to be reported to the HSE&R Department who will notify the appropriate agency.