

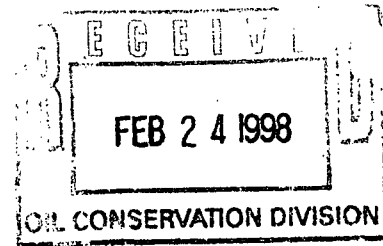
NSL 3/16/98

# BURLINGTON RESOURCES

SAN JUAN DIVISION

February 19, 1998

Ms. Lori Wrotenbery  
New Mexico Oil Conservation Division  
2040 South Pacheco  
Santa Fe, New Mexico 87505



Re: San Juan 30-6 Unit #37A  
1935'FSL, 550'FEL Section 10, T-30-N, R-6-W, Rio Arriba County  
API # 30-039-not assigned

Dear Ms. Wrotenbery:

Burlington Resources is applying for administrative approval of an unorthodox "infill" gas well location for the Mesa Verde pool and for an unorthodox gas well location for the Dakota pool. It is intended to drill and dually complete this well. This application for the referenced location is due to the presence of archaeology, a wash, and terrain.

Production from the Blanco Mesa Verde pool is to be included in an existing 320 gas spacing and proration unit comprising of the east half of Section 10, T-30-N, R-6-W which is currently dedicated to Burlington Resources' San Juan 30-6 Unit #37 (API 30-039-07895), located at a standard gas well location of 990'FNL, 1650'FEL (Unit B) of said Section 10. Production from the Basin Dakota pool is to be included in a 320 gas spacing and proration unit comprising of the east half of Section 10, T-30-N, R-6-W.

The following attachments are for your review:

- Application for Permit to Drill.
- Completed C-102 at referenced location.
- Offset operators/owners plat and certification.
- 7.5 minute topographic map showing the orthodox windows, and enlargement of the map to define topographic features.

We appreciate your earliest consideration of this application.

Sincerely,

A handwritten signature in cursive script, appearing to read "Peggy Bradfield".

Peggy Bradfield  
Regulatory/Compliance Administrator

mw DK16

xc: NMOCD - Aztec District Office  
Bureau of Land Management - Farmington

## WAIVER

\_\_\_\_\_ hereby waives objection to Burlington Resources' application for a non-standard location for their San Juan 30-6 Unit #37A as proposed above.

By: \_\_\_\_\_ Date: \_\_\_\_\_  
xc: Phillips Petroleum

District I  
PO Box 1980, Hobbs, NM 88241-1980  
District II  
811 South First, Artesia, NM 88210  
District III  
1000 Rio Brazos Rd., Aztec, NM 87410  
District IV  
2040 South Pacheco, Santa Fe, NM 87505

State of New Mexico  
Energy, Minerals & Natural Resources Department

OIL CONSERVATION DIVISION  
2040 South Pacheco  
Santa Fe, NM 87505

Form C-101  
Revised October 18, 1994  
Instructions on back  
Submit to Appropriate District Office  
State Lease - 6 Copies  
Fee Lease - 5 Copies

☐ AMENDED REPORT

APPLICATION FOR PERMIT TO DRILL, RE-ENTER, DEEPEN, PLUGBACK, OR ADD A ZONE

<sup>1</sup> Operator Name and Address. Burlington Resources PO Box 4289, Farmington, NM 87499		<sup>2</sup> OGRID Number 14538
		<sup>3</sup> API Number 30 - 0-
<sup>4</sup> Property Code 7469	<sup>5</sup> Property Name San Juan 30-6 Unit	<sup>6</sup> Well No. 37A

<sup>7</sup> Surface Location

UL or lot no.	Section	Township	Range	Lot Idn	Feet from the	North/South line	Feet from the	East/West line	County
I	10	30N	7W		1935'	South	550	East	RA

<sup>8</sup> Proposed Bottom Hole Location If Different From Surface

UL or lot no.	Section	Township	Range	Lot Idn	Feet from the	North/South line	Feet from the	East/West line	County

<sup>9</sup> Proposed Pool 1 Blanco Mesa Verde	<sup>10</sup> Proposed Pool 2 Basin Dakota
---	---

<sup>11</sup> Work Type Code N	<sup>12</sup> Well Type Code G	<sup>13</sup> Cable/Rotary Rotary	<sup>14</sup> Lease Type Code Fee	<sup>15</sup> Ground Level Elevation 6220'
<sup>16</sup> Multiple Y	<sup>17</sup> Proposed Depth 7717	<sup>18</sup> Formation MV & Dk	<sup>19</sup> Contractor N/a	<sup>20</sup> Spud Date N/a

<sup>21</sup> Proposed Casing and Cement Program

Hole Size	Casing Size	Casing weight/foot	Setting Depth	Sacks of Cement	Estimated TOC
12 1/4"	9 5/8"	32.3#	200'	188 cu.ft.	Surface
8 3/4"	7"	20.0#	3352'	957 cu.ft.	Surface
6 1/4"	5 1/2" flushjoint	15.5#	7717'	301 cu.ft.	3200' approx

<sup>22</sup> Describe the proposed program. If this application is to DEEPEN or PLUG BACK give the data on the present productive zone and proposed new productive zone. Describe the blowout prevention program, if any. Use additional sheets if necessary.

11" 2000 psi minimum double gate BOP

Note: to facilitate higher hydraulic stimulation, no liner hanger will be used. Instead, a long string of 5 1/2" casing will be run and cemented with a minimum of 100' of cement overlap between the 5 1/2" x 7" casing strings. After completion, a 5 1/2" CIBP will be set above the last fracturing job to cut and pull the 5 1/2" casing above the 7" casing shoe. The 5 1/2" bridge plug will then be milled and two strings of tubing with a packer will be run for a dual completion.

<sup>23</sup> I hereby certify that the information given above is true and complete to the best of my knowledge and belief.

Signature:

Printed name: Peggy Bradfield

Title: Regulatory/Compliance Administrator

Date: February 11, 1998

Phone: 505-326-9700

OIL CONSERVATION DIVISION

Approved by:

Title:

Approval Date:

Expiration Date:

Conditions of Approval :

Attached ☐

District I  
PO Box 1980, Hobbs, NM 88241-1980

District II  
PO Drawer DD, Artesia, NM 88211-0719

District III  
1000 Rio Brazos Rd., Aztec, NM 87410

District IV  
PO Box 2088, Santa Fe, NM 87504-2088

State of New Mexico  
Energy, Minerals & Natural Resources Department

OIL CONSERVATION DIVISION  
PO Box 2088  
Santa Fe, NM 87504-2088

Form  
Revised February 21,  
Instructions on  
Submit to Appropriate District  
State Lease - 4 C  
Fee Lease - 3 C

☐ AMENDED REF

WELL LOCATION AND ACREAGE DEDICATION PLAT

*API Number 30-039-		*Pool Code 72319/71599	*Pool Name Blanco Mesaverde/Basin Dakota
*Property Code 7469	*Property Name SAN JUAN 30-6 UNIT		*Well Number 37A
*GRID No. 14538	*Operator Name BURLINGTON RESOURCES OIL & GAS COMPANY		*Elevation 6220'

10 Surface Location

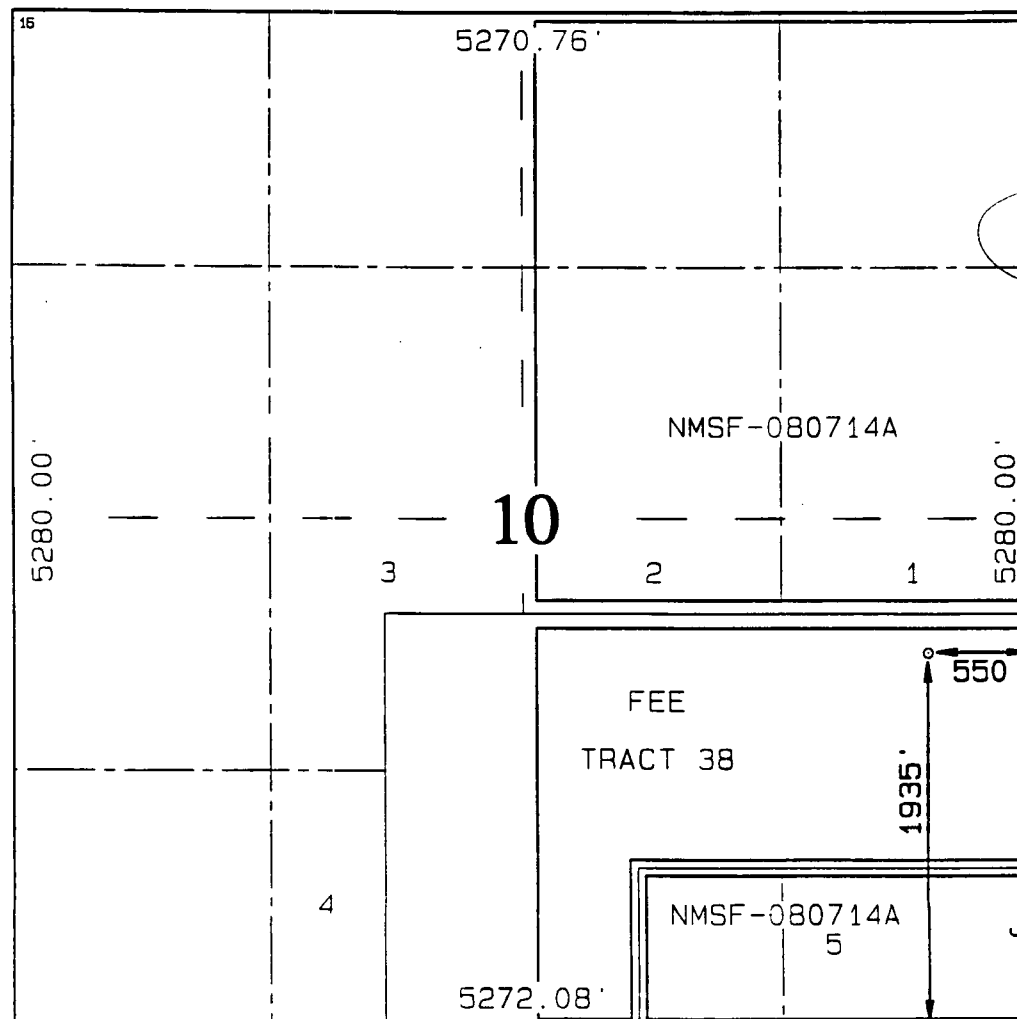
UL or lot no. I	Section 10	Township 30N	Range 6W	Lot Idn	Feet from the 1935	North/South line South	Feet from the 550	East/West line East	Count RI ARRI
--------------------	---------------	-----------------	-------------	---------	-----------------------	---------------------------	----------------------	------------------------	---------------------

11 Bottom Hole Location If Different From Surface

UL or lot no.	Section	Township	Range	Lot Idn	Feet from the	North/South line	Feet from the	East/West line	Count
---------------	---------	----------	-------	---------	---------------	------------------	---------------	----------------	-------

12 Dedicated Acres MV-E/320 DK-E/320	13 Joint or Infill	14 Consolidation Code	15 Order No.
--	--------------------	-----------------------	--------------

NO ALLOWABLE WILL BE ASSIGNED TO THIS COMPLETION UNTIL ALL INTERESTS HAVE BEEN CONSOLIDATED OR A NON-STANDARD UNIT HAS BEEN APPROVED BY THE DIVISION



17 OPERATOR CERTIFICATE  
I hereby certify that the information contained here  
true and complete to the best of my knowledge and

*Peggy Bradford*  
Signature  
Peggy Bradford  
Printed Name  
Regulatory Administrator  
Title  
2/11/98  
Date

18 SURVEYOR CERTIFICATE  
I hereby certify that the well location shown on this  
was plotted from field notes of actual surveys made  
or under my supervision and that the same is true  
correct to the best of my belief.

JULY 21, 1997  
Date of Survey  
Signature  
NEALE C. EDWARDS  
NEW MEXICO  
6857  
REGISTERED PROFESSIONAL SURVEYOR  
Certificate Number

***BURLINGTON RESOURCES OIL AND GAS COMPANY***

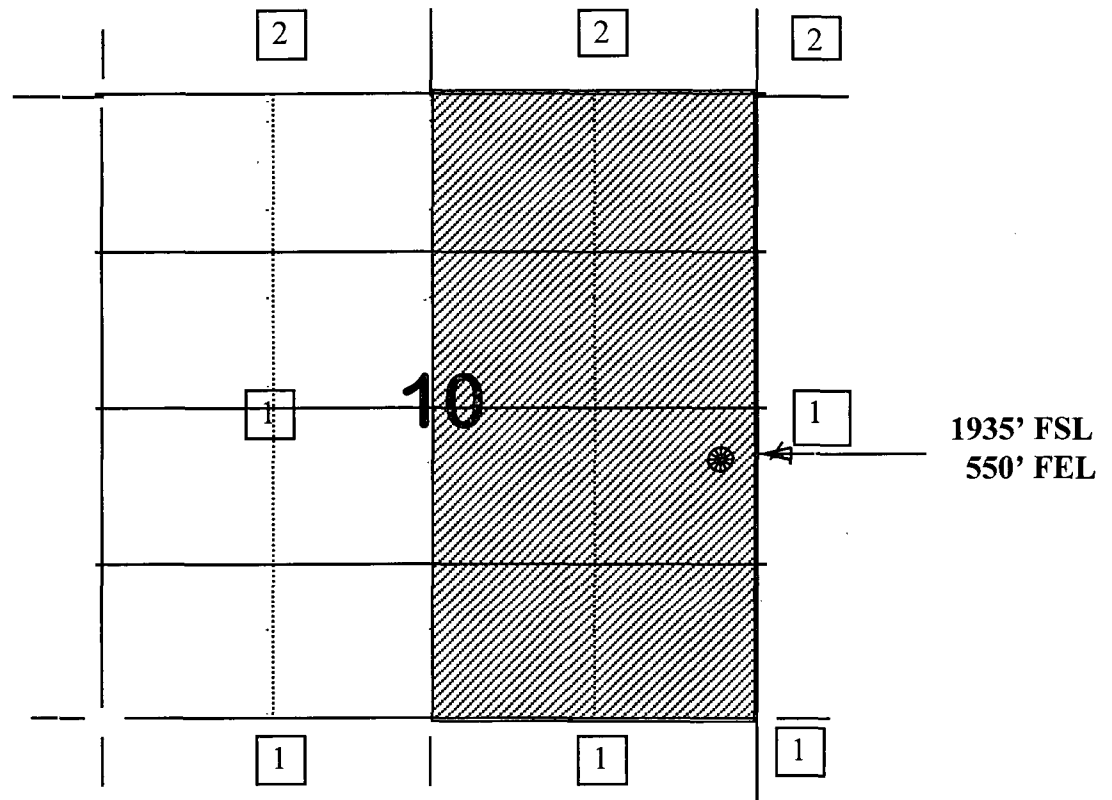
**San Juan 30-6 Unit #37A**

**OFFSET OPERATOR/OWNER PLAT**

**Non Standard Location**

**Mesaverde / Dakota Formation Well**

**Township 30 North, Range 6 West**



- 1) Burlington Resources
  - 2) Phillips Petroleum Company
- Attn: Pat Noah  
5525 Hwy. 64, NBU 3004  
Farmington, NM 87401

Re: San Juan 30-6 Unit #37A  
1935'FSL, 550'FEL Section 10, T-30-N, R-6-W, Rio Arriba County  
API # 30-039-not assigned

I hereby certify that the following offset operators/owners have been mailed notification of our application for non-standard location to drill the referenced well.

Phillips Petroleum  
5525 Highway 64, NBU 3004  
Farmington, NM 87401

  
Reggy Bradfield  
Regulatory/Compliance Administrator



