

DATE IN 5/12/98	SUSPENSE 6/1/98	ENGINEER MS	LOGGED BY KV	TYPE NSL
-----------------	-----------------	-------------	--------------	----------

ABOVE THIS LINE FOR DIVISION USE ONLY

NEW MEXICO OIL CONSERVATION DIVISION

- Engineering Bureau -

2040 South Pacheco, Santa Fe, NM 87505



ADMINISTRATIVE APPLICATION COVERSHEET

THIS COVERSHEET IS MANDATORY FOR ALL ADMINISTRATIVE APPLICATION FOR EXCEPTIONS TO DIVISION RULES AND REGULATIONS WHICH REQUIRE PROCESSING AT THE DIVISION LEVEL IN SANTA FE

Application Acronyms:

[NSP-Non-Standard Proration Unit] [NSL-Non-Standard Location]
[DD-Directional Drilling] [SD-Simultaneous Dedication]
[DHC-Downhole Commingling] [CTB-Lease Commingling] [PLC-Pool/Lease Commingling]
[PC-Pool Commingling] [OLS - Off-Lease Storage] [OLM-Off-Lease Measurement]
[WFX-Waterflood Expansion] [PMX-Pressure Maintenance Expansion]
[SWD-Salt Water Disposal] [IPI-Injection Pressure Increase]
[EOR-Qualified Enhanced Oil Recovery Certification] [PPR-Positive Production Response]

[1] TYPE OF APPLICATION - Check Those Which Apply for [A]

[A] Location - Spacing Unit - Directional Drilling

☒ NSL ☐ NSP ☐ DD ☐ SD

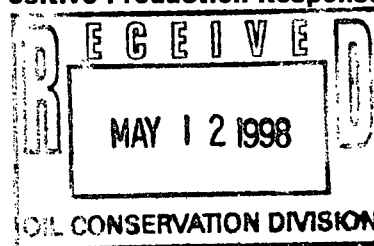
Check One Only for [B] or [C]

[B] Commingling - Storage - Measurement

☐ DHC ☐ CTB ☐ PLC ☐ PC ☐ OLS ☐ OLM

[C] Injection - Disposal - Pressure Increase - Enhanced Oil Recovery

☐ WFX ☐ PMX ☐ SWD ☐ IPI ☐ EOR ☐ PPR



MUINFLD 9.

[2] NOTIFICATION REQUIRED TO: - Check Those Which Apply, or ☐ Does Not Apply

[A] ☐ Working, Royalty or Overriding Royalty Interest Owners

[B] ☐ Offset Operators, Leaseholders or Surface Owner

[C] ☐ Application is One Which Requires Published Legal Notice

[D] ☒ Notification and/or Concurrent Approval by BLM or SLO
U.S. Bureau of Land Management - Commissioner of Public Lands, State Land Office

[E] ☐ For all of the above, Proof of Notification or Publication is Attached, and/or,

[F] ☐ Waivers are Attached

[3] INFORMATION / DATA SUBMITTED IS COMPLETE - Certification

I hereby certify that I, or personnel under my supervision, have read and complied with all applicable Rules and Regulations of the Oil Conservation Division. Further, I assert that the attached application for administrative approval is accurate and complete to the best of my knowledge and where applicable, verify that all interest (WI, RI, ORRI) is common. I understand that any omission of data (including API numbers, pool codes, etc.), pertinent information and any required notification is cause to have the application package returned with no action taken.

Note: Statement must be completed by an individual with managerial and/or supervisory capacity.

Print or Type Name

Signature

Title

Date

[Signature] Reg Adm

5-9-98

BURLINGTON RESOURCES

SAN JUAN DIVISION

May 9, 1998

Sent Federal Express

Ms. Lori Wrotenbery, Director
New Mexico Oil Conservation Division
2040 South Pacheco
Santa Fe, New Mexico 87505

Re: San Juan 32-9 Unit #68A
1205'FNL, 1705'FWL, Section 24, T-32-N, R-10-W, San Juan County, NM
30-045-not assigned

Dear Ms. Wrotenbery:

Burlington Resources is applying for administrative approval of an unorthodox gas well location for the Mesa Verde pools. This application for the referenced location is for topographic and archaeological reasons and to minimize surface disturbance by twinning the location of the San Juan 32-9 Unit POW #1 (30-045-29381) located at 1155'FNL, 1720'FWL of Section 24.

Production from the Blanco Mesa Verde pool is to be included in an existing 320 acre gas spacing and proration unit comprising of the West half (W/2) of Section 24 which is currently dedicated to Burlington's San Juan 32-9 Unit #68 (API 30-045-11316), located at a standard gas well location of 990' FSL, 990' FWL of said Section 24.

The following attachments are for your review:

1. Application for Permit to Drill.
2. Completed C-102 at referenced location.
3. Offset operators/owners plat - Burlington is the operator of the unit.
4. 7.5 minute topographic map, and enlargement of the map to define topographic features.

We appreciate your earliest consideration of this application.

Sincerely,




Peggy Bradfield
Regulatory/Compliance Administrator

xc: NMOCD - Aztec District Office
Bureau of Land Management - Farmington District Office

UNITED STATES
DEPARTMENT OF THE INTERIOR
BUREAU OF LAND MANAGEMENT

APPLICATION FOR PERMIT TO DRILL, DEEPEN, OR PLUG BACK

1a. Type of Work DRILL	5. Lease Number SF-078504 Unit Reporting Number	
1b. Type of Well GAS	6. If Indian, All. or Tribe	
2. Operator BURLINGTON RESOURCES Oil & Gas Company	7. Unit Agreement Name San Juan 32-9 Unit	
3. Address & Phone No. of Operator PO Box 4289, Farmington, NM 87499 (505) 326-9700	8. Farm or Lease Name San Juan 32-9 Unit 9. Well Number 68A	
4. Location of Well 1205' FNL, 1705' FWL Latitude 36° 58.4, Longitude 107° 50.3	10. Field, Pool, Wildcat Blanco MV 11. Sec., Twn, Rge, Mer. (NMPM) Sec 24, T-32-N, R-10-W API # 30-045-	
14. Distance in Miles from Nearest Town 4 miles to Cedar Hill	12. County SJ	13. State NM
15. Distance from Proposed Location to Nearest Property or Lease Line 1205'		
16. Acres in Lease	17. Acres Assigned to Well 320 W/2	
18. Distance from Proposed Location to Nearest Well, Drlg, Compl, or Applied for on this Lease 75'		
19. Proposed Depth 6387'	20. Rotary or Cable Tools Rotary	
21. Elevations (DF, FT, GR, Etc.) 6941'	22. Approx. Date Work will Start	
23. Proposed Casing and Cementing Program See Operations Plan attached		
24. Authorized by:  4-27-98 Regulatory/Compliance Administrator Date		

PERMIT NO. _____ APPROVAL DATE _____

APPROVED BY _____ TITLE _____ DATE _____

Archaeological Report - Please use Arboles Tech Report #875 dated 3-25-96 for SJ 32-9 POW #1

Threatened and Endangered Species Report submitted

NOTE: This format is issued in lieu of U.S. BLM Form 3160-3

Title 18 U.S.C. Section 1001, makes it a crime for any person knowingly and willfully to make to any department or agency of the United States any false, fictitious or fraudulent statements or presentations as to any matter within its jurisdiction.

District I
PO Box 1980, Hobbs, NM 88241-1980

District II
PO Drawer DD, Artesia, NM 88211-0719

District III
1000 Rio Brazos Rd., Aztec, NM 87410

District IV
PO Box 2088, Santa Fe, NM 87504-2088

State of New Mexico
Energy, Minerals & Natural Resources Department

OIL CONSERVATION DIVISION
PO Box 2088
Santa Fe, NM 87504-2088

Form C-102
Revised February 21, 1994
Instructions on back
Submit to Appropriate District Office
State Lease - 4 Copies
Fee Lease - 3 Copies

☐ AMENDED REPORT

WELL LOCATION AND ACREAGE DEDICATION PLAT

*API Number 30-045	*Pool Code 72319	*Pool Name Blanco Mesaverde
*Property Code 7473	*Property Name SAN JUAN 32-9 UNIT	*Well Number 68A
*OGRID No. 14538	*Operator Name BURLINGTON RESOURCES OIL & GAS COMPANY	*Elevation 6941'

¹⁰ Surface Location

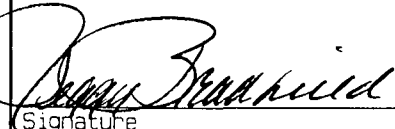
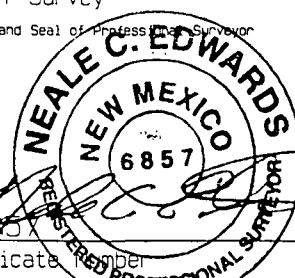
UL or lot no. C	Section 24	Township 32N	Range 10W	Lot Idn	Feet from the 1205	North/South line North	Feet from the 1705	East/West line West	County SAN JUAN
--------------------	---------------	-----------------	--------------	---------	-----------------------	---------------------------	-----------------------	------------------------	--------------------

¹¹ Bottom Hole Location If Different From Surface

UL or lot no.	Section	Township	Range	Lot Idn	Feet from the	North/South line	Feet from the	East/West line	County
---------------	---------	----------	-------	---------	---------------	------------------	---------------	----------------	--------

¹² Dedicated Acres W/320 301.86	¹³ Joint or Infill	¹⁴ Consolidation Code	¹⁵ Order No.
---	-------------------------------	----------------------------------	-------------------------

NO ALLOWABLE WILL BE ASSIGNED TO THIS COMPLETION UNTIL ALL INTERESTS HAVE BEEN CONSOLIDATED
OR A NON-STANDARD UNIT HAS BEEN APPROVED BY THE DIVISION

¹⁶ 37.89 4 1705' 1205' 37.82 3 2 1 2605.02' 37.78 5 37.71 6 7 8 5247.00' SF-078504 24 37.71 12 37.73 11 10 9 37.60 13 5532-9 Unit #68 9901 FSFWL 37.62 14 15 16 4992.24'	¹⁷ OPERATOR CERTIFICATION I hereby certify that the information contained herein is true and complete to the best of my knowledge and belief  Signature Peggy Bradfield Printed Name Regulatory Administrator Title 4-27-98 Date
	¹⁸ SURVEYOR CERTIFICATION I hereby certify that the well location shown on this plat was plotted from field notes of actual surveys made by me or under my supervision, and that the same is true and correct to the best of my belief. FEBRUARY 2, 1998 Date of Survey Signature and Seal of Professional Surveyor  Certificate Number

OPERATIONS PLAN

Well Name: San Juan 32-9 Unit #68A
Location: 1205' FNL, 1705' FWL Section 24, T-32-N, R-10-W
San Juan County, New Mexico
Latitude 36° 58.4, Longitude 107° 50.3
Formation: Blanco Mesa Verde
Elevation: 6941' GL

<u>Formation Tops:</u>	<u>Top</u>	<u>Bottom</u>	<u>Contents</u>
Surface	San Jose	2210'	aquifer
Ojo Alamo	2210'	2295'	aquifer
Kirtland	2295'	3014'	
Fruitland	3014'	3681'	
Pictured Cliffs	3681'	3808'	gas
Lewis	3808'	4389'	gas
Intermediate TD	3908'		
Huerfano Bentonite	4389'	4883'	
Chacra	4883'	5624'	
Massive Cliff House	5624'	5679'	gas
Menefee	5679'	5987'	gas
Massive Point Lookout	5987'	6276'	gas
Mancos Shale	6276'		
Total Depth	6387'		

Logging Program:

Cased hole logging - Gamma Ray Neutron
Coring/DST - none

Mud Program:

<u>Interval</u>	<u>Type</u>	<u>Weight</u>	<u>Vis.</u>	<u>Fluid Loss</u>
0- 200'	Spud	8.4-9.0	40-50	no control
200-3908'	LSND	8.4-9.0	30-60	no control
3908-6387'	Gas/Mist	n/a	n/a	n/a

Pit levels will be visually monitored to detect gain or loss of fluid control.

Casing Program (as listed, the equivalent, or better):

<u>Hole Size</u>	<u>Depth Interval</u>	<u>Csq. Size</u>	<u>Wt.</u>	<u>Grade</u>
12 1/4"	0' - 200'	9 5/8"	32.3#	H-40
8 3/4"	0' - 3908'	7"	20.0#	J-55
6 1/4"	3808' - 6387'	4 1/2"	10.5#	J-55

Tubing Program:

0' - 6387' 2 3/8" 4.7# J-55

BOP Specifications, Wellhead and Tests:

Surface to Intermediate TD -

11" 2000 psi minimum double gate BOP stack (Reference Figure #1).
After nipple-up prior to drilling out surface casing, rams and casing will be tested to 600 psi for 30 minutes.

BOP Specifications, Wellhead and Tests (cont'd):Intermediate TD to Total Depth -

11" 2000 psi minimum double gate BOP stack (Reference Figure #1).
After nipple-up prior to drilling out intermediate casing, rams
and casing will be tested to 1500 psi for 30 minutes.

Surface to Total Depth -

2" nominal, 2000 psi minimum choke manifold (Reference Figure #3).

Completion Operations -

7 1/16" 2000 psi double gate BOP stack (Reference Figure #2).
After nipple-up prior to completion, pipe rams, casing and liner
top will be tested to 2000 psi for 15 minutes.

Wellhead -

9 5/8" x 7" x 2 3/8" x 2000 psi tree assembly.

General -

- Pipe rams will be actuated once each day and blind rams will be actuated once each trip to test proper functioning.
- An upper kelly cock valve with handle available and drill string valves to fit each drill string will be available on the rig floors at all times.
- BOP pit level drill will be conducted weekly for each drill crew.
- All BOP tests & drills will be recorded in daily drilling reports.
- Blind and pipe rams will be equipped with extension hand wheels.

Cementing:

9 5/8" surface casing - cement with 163 sx Class "B" cement with 1/4# flocele/sx and 3% calcium chloride (188 cu.ft. of slurry, 200% excess to circulate to surface). WOC 8 hrs. Test casing to 600 psi for 30 minutes.

Saw tooth guide shoe on bottom. Bowspring centralizers will be run in accordance with Onshore Order #2.

7" intermediate casing -

Lead w/315 sx Class "B" w/3% sodium metasilicate, 10# gilsonite/sx and 1/2# flocele/sx. Tail w/90 sx 50/50 Class "B" Poz w/2% gel, 2% calcium chloride, 0.5# flocele/sx, and 10# gilsonite/sx (1028 cu.ft. of slurry, 75% excess to circulate to surface.) WOC minimum of 8 hours before drilling out intermediate casing. If cement does not circulate to surface, a CBL will be run to determine TOC. Test casing to 1500 psi for 30 minutes.

7" intermediate casing - alternative two stage cement. Stage tool set @ 3014'. First stage: lead with 52 sx Class "B" with 3% sodium metasilicate, 1/2 pps flocele, 10 pps gilsonite. Tail with 90 sx 50/50 Class "B" Poz with 2% gel, 2% calcium chloride, 1/2 pps flocele, 10 pps gilsonite. Second stage: Lead with 315 sx Class "B" with 3% sodium metasilicate, 1/2 pps flocele, 10 pps gilsonite (1175 cu.ft.), 100% excess to circulate to surface).

Cement nose guide shoe on bottom with float collar spaced on top of shoe joint. Bowspring centralizers spaced every other joint off bottom, to the base of the Ojo Alamo at 2295'. Two turbolating centralizers at the base of the Ojo Alamo at 2295'. Bowspring centralizers spaced every fourth joint from the base of the Ojo Alamo to the base of the surface casing.

4 1/2" Production Liner -

Cement to circulate liner top. Cement with 279 sx 50/50 Class "B" Poz w/1/4# flocele/sx, 5# gilsonite/sx and 0.3% fluid loss additive (370 cu.ft., 40% excess to circulate liner top). WOC a minimum of 18 hrs prior to completing.

Cement nose guide shoe on bottom with float collar spaced on top of shoe joint. The liner hanger will have a rubber packoff.

Special Drilling Operations (Gas/Mist Drilling):

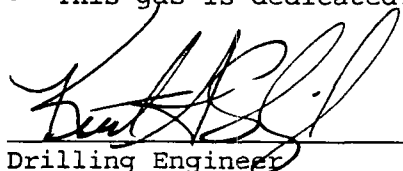
The following equipment will be operational while gas/mist drilling:

- An anchored blooie line will be utilized to discharge all cuttings and circulating medium to the blow pit a minimum of 100' from the wellhead.
- The blooie line will be equipped with an automatic igniter or pilot light.
- Compressors will be located a minimum of 100' from the wellhead in the opposite direction from the blooie line.
- Engines will have spark arresters or water cooled exhaust.
- The rotating head will be properly lubricated and maintained.
- A float valve will be utilized above the bit.
- Mud circulating equipment, water, and mud materials will be sufficient to maintain control of the well.

Additional Information:

- The Mesa Verde formation will be completed.
- No abnormal temperatures or hazards are anticipated.
- Anticipated pore pressures are as follows:

Fruitland Coal	800 psi
Pictured Cliffs	800 psi
Mesa Verde	700 psi
- Sufficient LCM will be added to the mud system to maintain well control, if lost circulation is encountered below the top of the Pictured Cliffs.
- The west half of the section is dedicated to the Mesa Verde.
- This gas is dedicated.


Drilling Engineer


Date

BURLINGTON RESOURCES

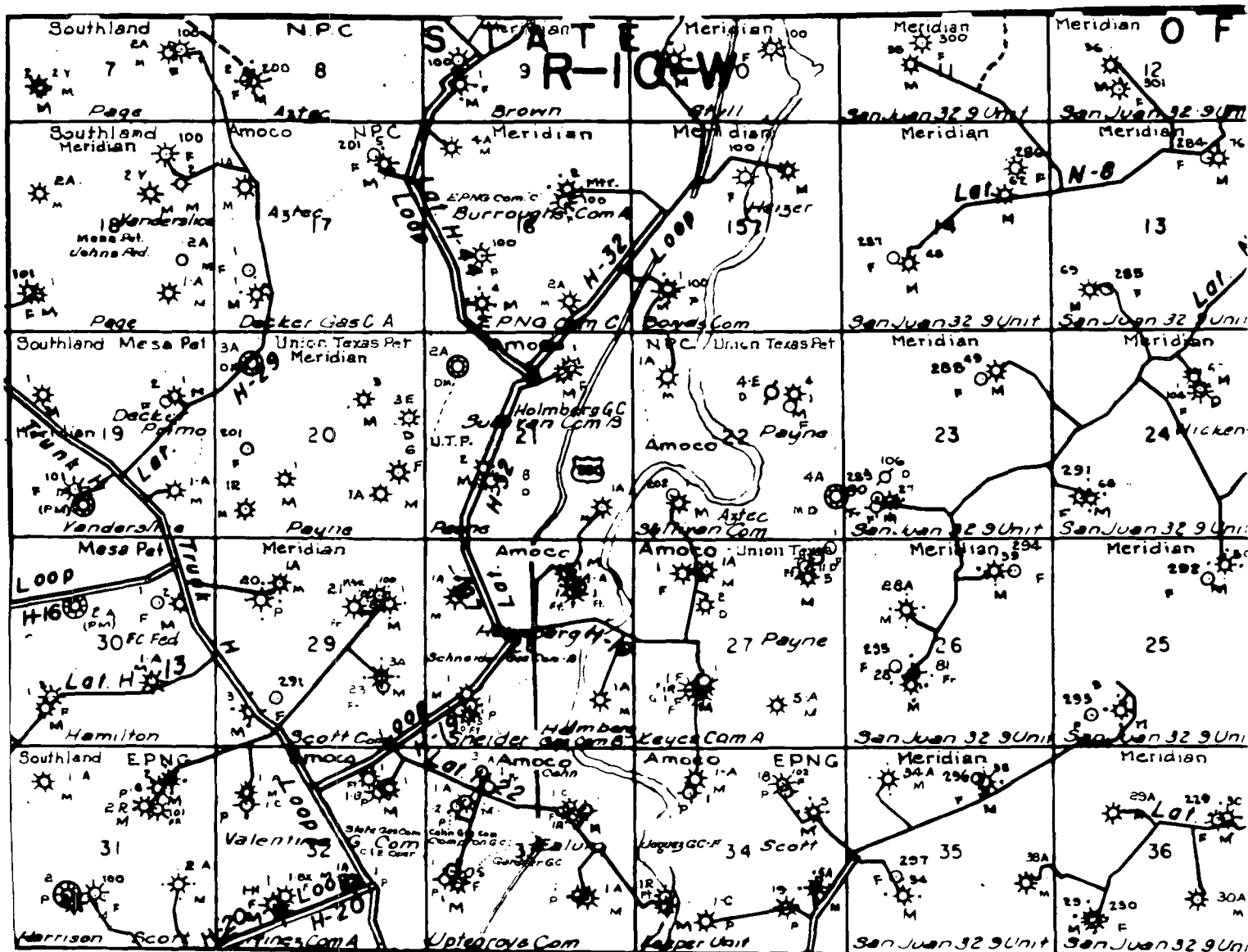
San Juan 32-9 Unit #68A
Multi-Point Surface Use Plan

1. Existing Roads - Refer to Map No. 1. Existing roads used to access the proposed location will be properly maintained for the duration of the project. Bureau of Land Management right-of-way has been applied for as shown on Map No. 1.
2. Planned Access Road - Refer to Map No. 1. None required.
3. Location of Existing Wells - Refer to Map No. 1A.
4. Location of Existing and/or Proposed Facilities if Well is Productive -
 - a. On the Well Pad - Refer to Plat No. 1, anticipated production facilities plat.
 - b. Off the Well Pad - Anticipated pipeline facilities as shown on the attached plat from El Paso Field Services.
5. Location and Type of Water Supply - Water will be hauled by truck for the proposed project and will be obtained from Graves Attebury Ditch located in NW/4 Section 4, T-31-N, R-10-W, New Mexico.
6. Source of Construction Materials - If construction materials are required for the proposed project, such materials will be obtained from a commercial quarry.
7. Methods of Handling Waste Materials - All garbage and trash materials will be removed from the site for proper disposal. A portable toilet will be provided for human waste and serviced in a proper manner. If liquids are left in the reserve pit after completion of the project, the pit will be fenced until the liquids have had adequate time to dry. The location clean-up will not take place until such time as the reserve pit can be properly covered over to prevent run-off from carrying waste materials into the watershed. Reserve pits will be lined as needed with either 12 mil bio-degradable plastic liner or a bentonite liner. All earthen pits will be so constructed as to prevent leakage from occurring; no earthen pit will be located on natural drainage. Generation of hazardous waste is not anticipated. Federal regulations will be adhered to regarding handling and disposal of such waste if so generated.
8. Ancillary Facilities - None anticipated.
9. Wellsite Layout - Refer to the location diagram and to the wellsite cut and fill diagram (Figure No. 4). The blow pit will be constructed with a 2'/160' grade to allow positive drainage to the reserve pit and prevent standing liquids in the blow pit.

10. Plans for Restoration of the Surface - After completion of the proposed project, the location will be cleaned and leveled. The location will be left in such a condition that will enable reseeding operations to be carried out. Seed mixture as designated by the responsible government agency will be used. The reseeding operations will be performed during the time period set forth by the responsible government agency. The permanent location facilities will be painted as designated by the responsible government agency.
11. Surface Ownership - Bureau of Land Management
12. Other Information - Environmental stipulations as outlined by the responsible government agency will be adhered to. Refer to the archaeological report for a description of the topography, flora, fauna, soil characteristics, dwellings, historical and cultural sites.
13. Operator's Representative and Certification - Burlington Resources Oil & Gas Company Regional Drilling Manager, Post Office Box 4289, Farmington, NM 87499, telephone (505) 326-9700. I hereby certify that I, or persons under my direct supervision, have inspected the proposed drill site and access route; that I am familiar with the conditions which presently exist; that the statements made in this plan, are to the best of my knowledge, true and correct; and that the work associated with the operations proposed herein will be performed by Burlington Resources Oil and Gas Company and its contractors and subcontractors in conformity with this plan and the terms and conditions under which it is approved.

Regulatory/Compliance Administrator Date

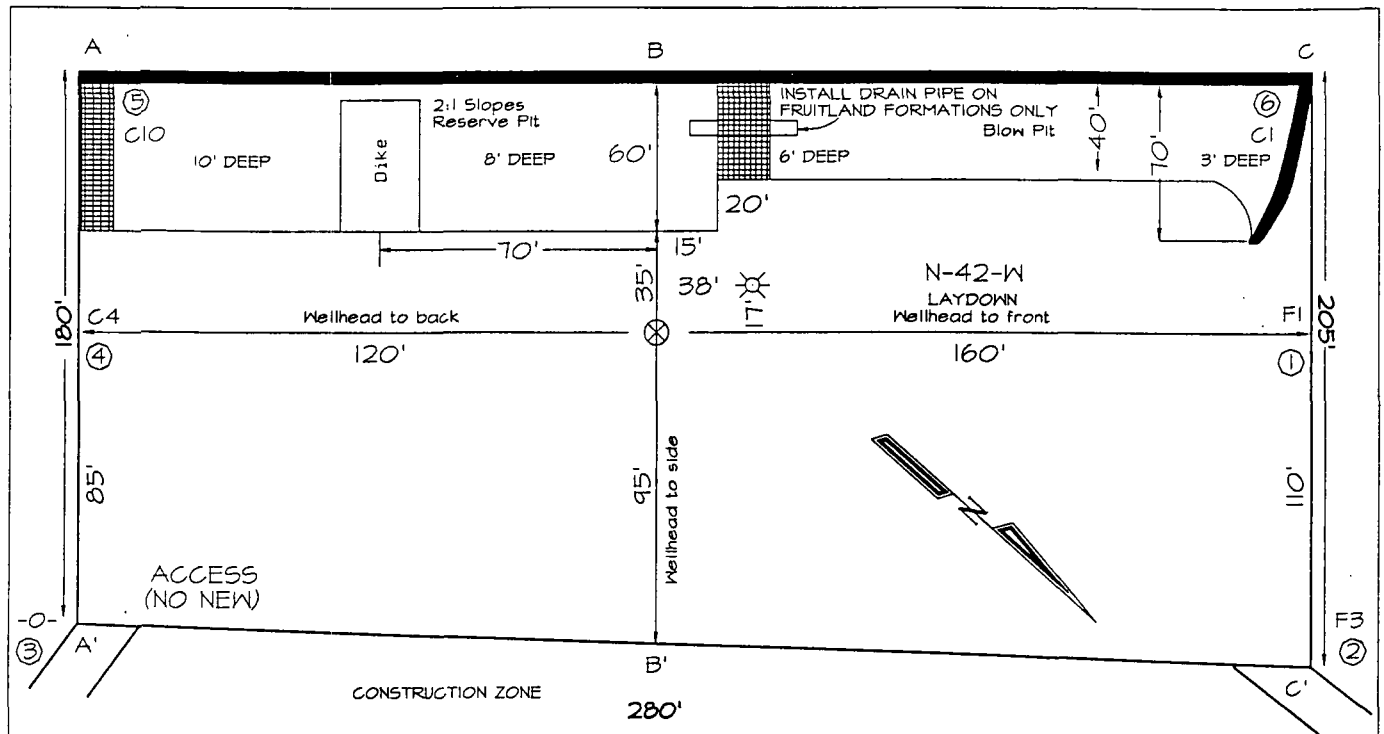
pb



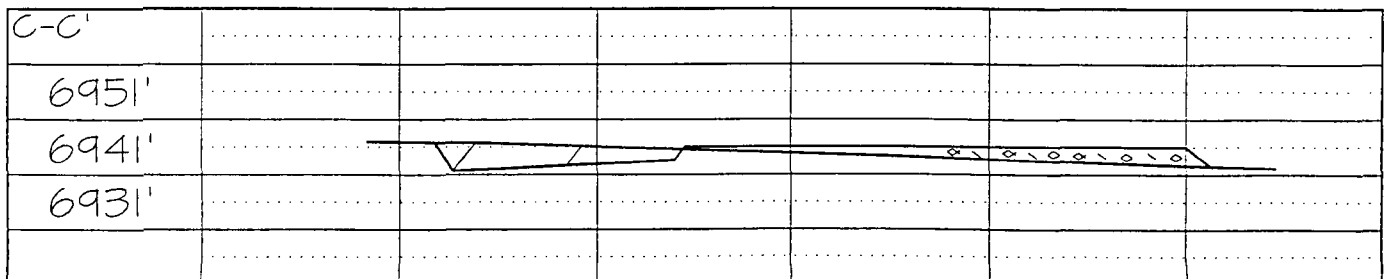
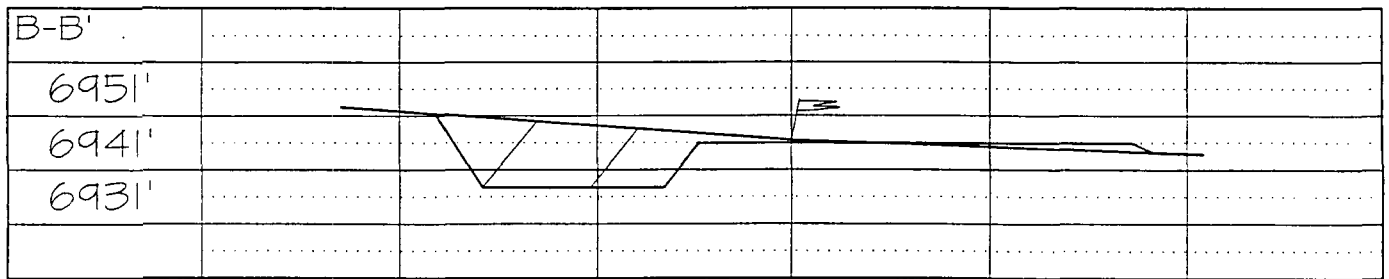
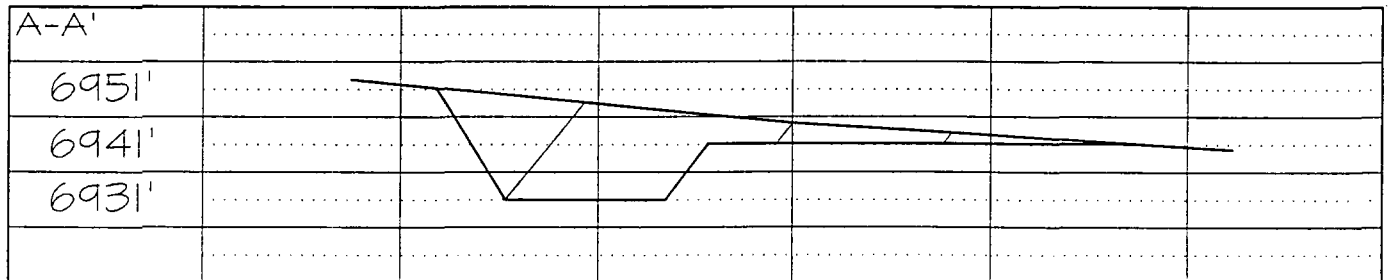
MERIDIAN OIL INC.
 Pipeline Map
 T-32-N, R-10-W
 San Juan County, New Mexico
 San Juan 32-9 Unit #68A
 Map 1A

PLAT #1

BURLINGTON RESOURCES OIL & GAS COMPANY
SAN JUAN 32-9 UNIT #68A, 1205' FNL & 1705' FWL
SECTION 24, T32N, R10W, NMPM, SAN JUAN COUNTY, NEW MEXICO
GROUND ELEVATION: 6941' DATE: FEBRUARY 2, 1998



Reserve Pit Dike: to be 8' above Deep side (overflow - 3' wide and 1' above shallow side).
 Blow Pit: overflow pipe halfway between top and bottom and to extend over plastic liner and into blow pit.



Note: Contractor should call One-Call for location of any marked or unmarked buried pipelines or cables on well pad and/or access road at least two (2) working days prior to construction

BURLINGTON RESOURCES OIL AND GAS COMPANY

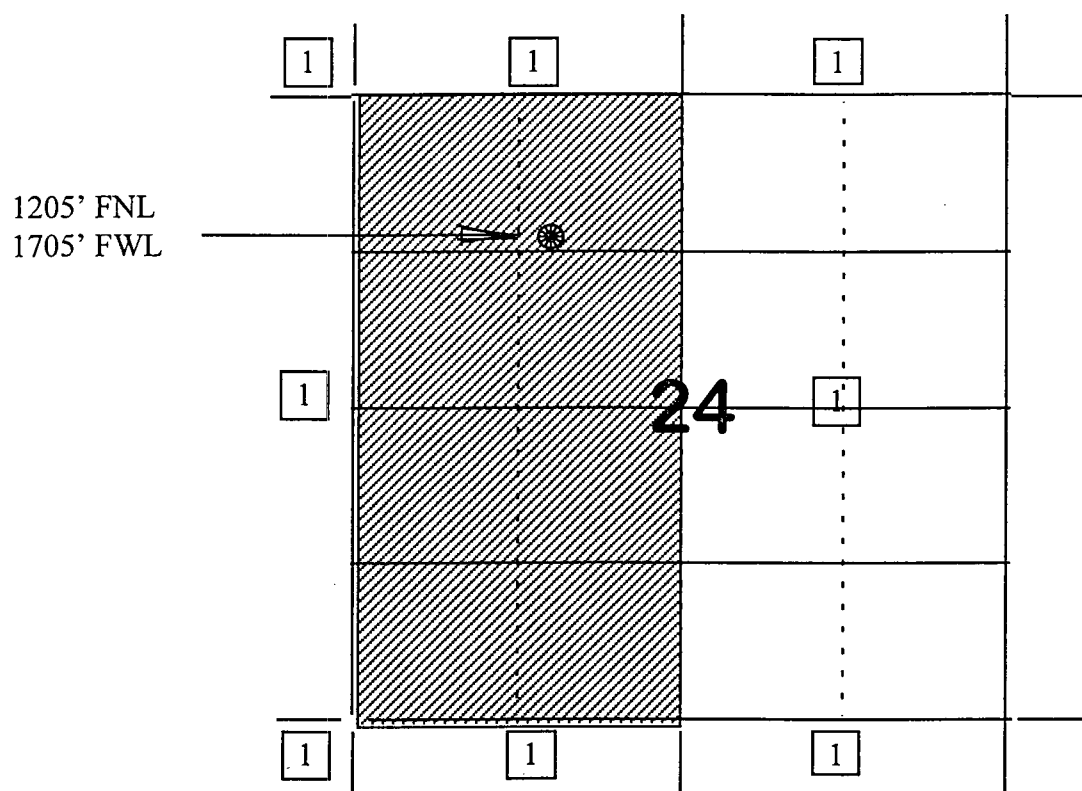
San Juan 32-9 Unit #68A

OFFSET OPERATOR/OWNER PLAT

Non Standard Location

Mesaverde Formation Well

Township 32 North, Range 10 West

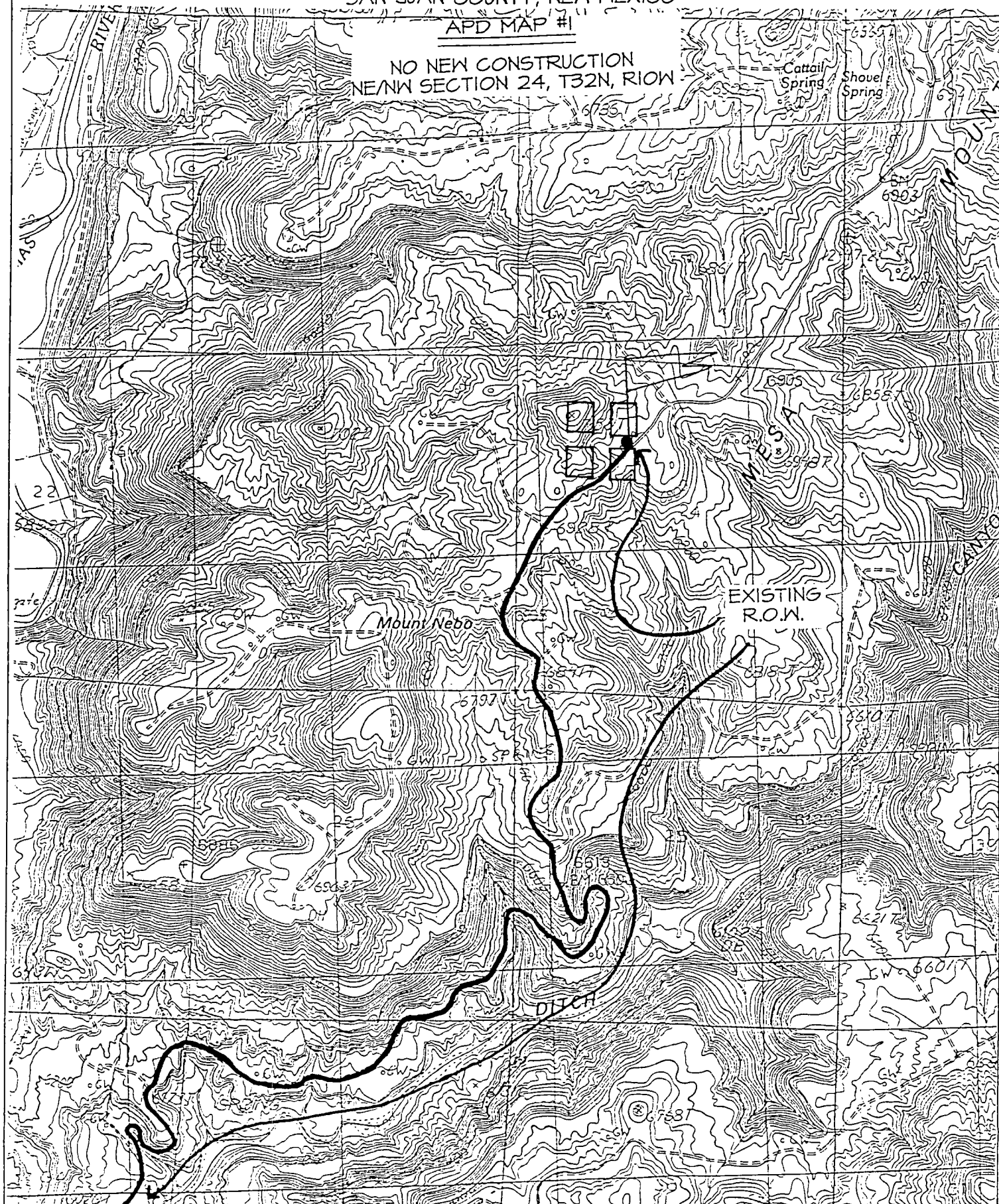


1) Burlington Resources

BURLINGTON RESOURCES OIL & GAS COMPANY SAN JUAN 32-9 UNIT #68A
1205' FNL & 1705' FWL, SECTION 24, T32N, R10W, N.M.P.M.
SAN JUAN COUNTY, NEW MEXICO

APD MAP #1

NO NEW CONSTRUCTION
NE/4 SECTION 24, T32N, R10W



1205' FNL & 1705' FWL, SECTION 24, T32N, R10W, N.M.P
SAN JUAN COUNTY, NEW MEXICO

APD MAP #1

NO NEW CONSTRUCTION
NE/NW SECTION 24, T32N, R10W

