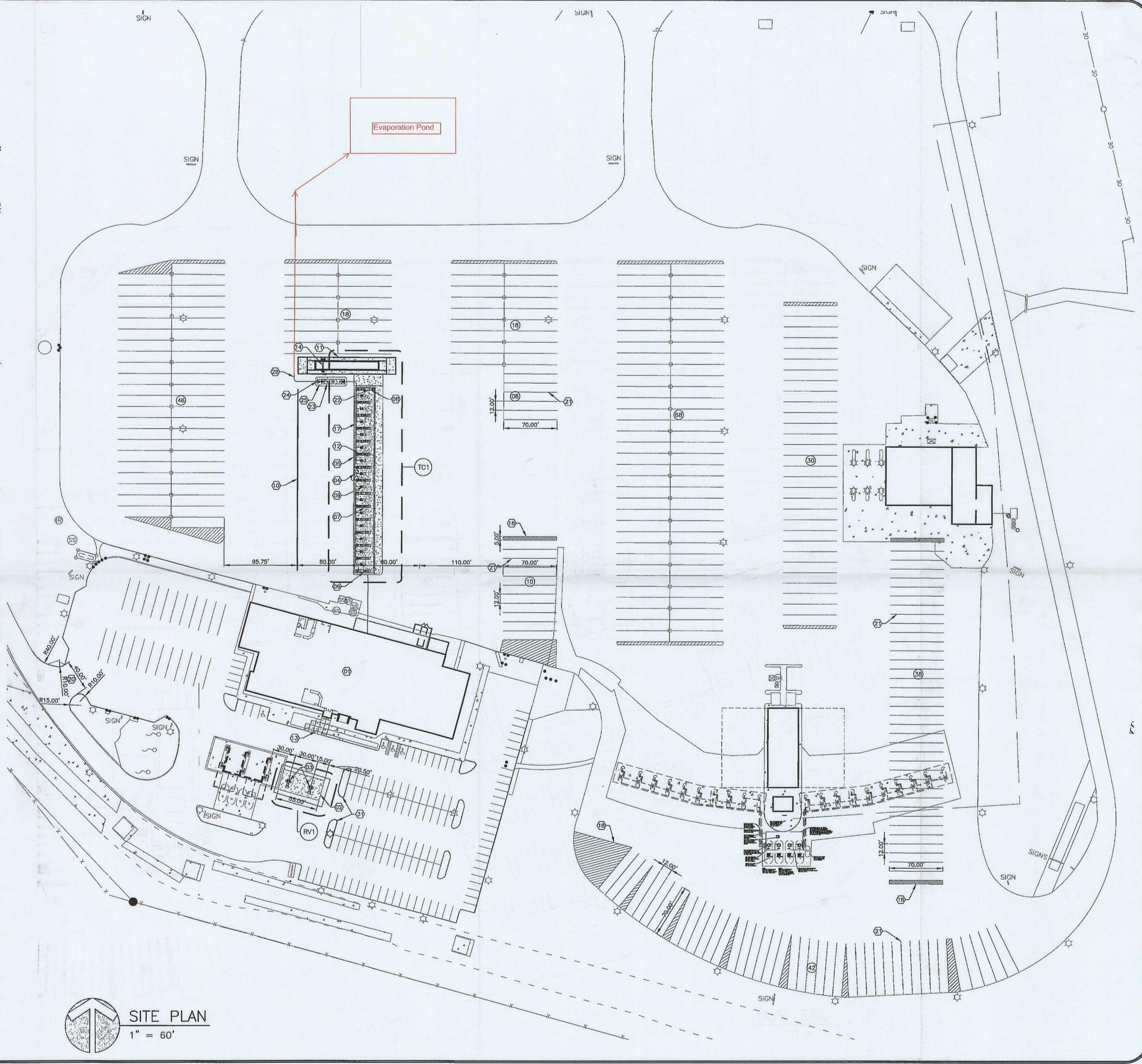


- CONSTRUCTION NOTES**
- 01 EXISTING TRAVEL CENTER BUILDING (SEE ARCHITECTURAL DRAWINGS).
 - 02 NEW 27'-0" x 55'-0" x 8" REINFORCED CONCRETE PAD FOR RV DISPENSERS, INSTALLED BY GC. (SEE SHEET RV1).
 - 03 NEW CONCRETE ISLANDS WITH A GAS/AUTO DIESEL DISPENSER AND CONTAINMENT BOX, INSTALLED BY GC.
 - 04 NEW 25'-0" x 243'-4" TRUCK CANOPY, FURNISHED AND INSTALLED BY CANOPY SUPPLIER, CANOPY FOUNDATIONS INSTALLED BY GC.
 - 05 NEW 38'-0" x 248'-0" x 8" REINFORCED CONCRETE PAD FOR TRUCK CANOPY, INSTALLED BY GC.
 - 06 NEW CONCRETE ISLAND WITH A DIESEL MASTER DISPENSER AND CONTAINMENT BOX TYPICAL AT (1) PLACE, INSTALLED BY GC.
 - 07 NEW CONCRETE ISLAND WITH A DIESEL MASTER DISPENSER, DIESEL SATELLITE DISPENSER AND CONTAINMENT BOX TYPICAL AT (13) PLACES, INSTALLED BY GC.
 - 08 NEW CONCRETE ISLAND WITH A DIESEL SATELLITE DISPENSER AND CONTAINMENT BOX TYPICAL AT (1) PLACE, INSTALLED BY GC.
 - 09 NEW PREFABRICATED TRUCK ISLAND CATCH BASIN (TYP (14) PLACES), SUPPLIED BY PILOT INSTALLED BY GC.
 - 10 NEW 12" WIDE PAINTED (SHERWIN WILLIAMS' WHITE TRAFFIC TM 2116) PULL FORWARD LINE INSTALLED BY GC.
 - 11 NEW TRUCK SCALE CONCRETE TRUCK SCALE PIT AND TRUCK SCALE FURNISHED AND INSTALLED BY TRUCK SCALE SUPPLIER, ELECTRICAL, COMMUNICATIONS AND DRAINAGE PROVIDED TO THE SCALE PIT BY GC, COORDINATION BY GC.
 - 12 NEW TRUCK AIR/WATER STAND, TYPICAL AT EVERY OTHER TRUCK FUELING ISLAND, FURNISHED BY OWNER, INSTALLED BY GC.
 - 13 NEW CONCRETE SIDEWALK INSTALLED BY GC.
 - 14 NEW "TRUCK SCALE" INTERNALLY ILLUMINATED SIGN FURNISHED AND INSTALLED BY TRUCK SCALE SUPPLIER, CONCRETE FOUNDATION BY TRUCK SCALE SUPPLIER, ELECTRICAL PROVIDED TO SCALE BY GC.
 - 15 "ONE WAY" SIGN FURNISHED AND INSTALLED BY GC.
 - 16 "WRONG WAY" SIGN FURNISHED AND INSTALLED BY GC.
 - 17 NEW "NON-SLIP" COATING AREA APPLIED TO FINISHED CONCRETE. (SEE TC1 FOR DETAILS).
 - 18 NEW TRAFFIC STRIPING 4" WIDE PAINTED (SHERWIN WILLIAMS' WHITE TRAFFIC TM 2116) PARALLEL STRIPES AT 16" O.C. FURNISHED AND INSTALLED BY GC.
 - 19 PAVEMENT SYMBOL, AND LETTERING PER D.O.T. SPECIFICATIONS (TYP), FURNISHED AND INSTALLED BY GC.
 - 20 NEW RV ENTRY EXIT, INSTALLED BY GC. SEE DRAWINGS 3.1 AND 3.2 FOR PAVEMENT AND CURB DETAILS.
 - 21 NEW 12'-0" x 70'-0" TRUCK PARKING SPACES TO BE PAINTED BY GC.
 - 22 NEW (1) REMOTE SMT SYSTEM INSIDE OF BUMPER AT TRUCK ISLAND #15.
 - 23 NEW 6,000 GALLON, 6'-0" x 30'-1", SINGLE-WALL STEEL UNDERGROUND OIL/WATER INTERCEPTOR (WITH EXTERIOR OF TANK COATED WITH A POLYURETHANE FINISH) FURNISHED BY PILOT, INSTALLED BY GC.
 - 24 NEW CONCRETE OIL/WATER SAMPLING MANHOLE FURNISHED AND INSTALLED BY GC.
 - 25 NEW 8" REINFORCED CONCRETE PAD AT OIL/WATER INTERCEPTOR, SEE SECTIONS AND DETAILS FOR SPECIFICATIONS, INSTALLED BY GC.
 - 26 NEW STORM WATER DETENTION BASIN, INSTALLED BY GC.
 - 27 NEW ENVIRONMENTAL CONTROL BASIN, INSTALLED BY GC.
 - 28 GC TO FURNISH AND INSTALL 8" PVC FROM THE OIL/WATER SAMPLING MANHOLE TO THE ENVIRONMENTAL CONTROL BASIN. INVERT ELEVATION AT THE OIL/WATER SAMPLING MANHOLE OUTLET=XXX.
 - 29 GC TO FURNISH AND INSTALL 8" PVC FROM THE ENVIRONMENTAL CONTROL BASIN TO THE STORM WATER CONTROL BASIN. INVERT ELEVATION AT THE ENVIRONMENTAL CONTROL BASIN OUTLET=XX. INVERT ELEVATION AT THE STORM WATER CONTROL BASIN INLET=XX.
 - 30 GC TO INSTALL 8" PVC TRUNK LINE FROM 3" PVC CANOPY DRAIN LINES TO TIE INTO 8" OIL/WATER INTERCEPTOR.
 - 31 PROVIDE NEW PARKING ISLANDS TO MATCH EXISTING ISLANDS.

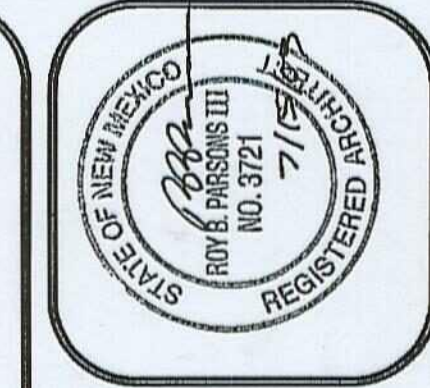
SPECIAL INSTRUCTIONS

1. CIVIL PLANS ARE TO BE USED AS A GUIDE TO FIND THE APPROXIMATE LOCATION OF UTILITIES, MANHOLES, STRUCTURES, ETC. GC IS TO FIELD VERIFY ALL ACTUAL LOCATION BEFORE STARTING CONSTRUCTION. GC IS ALSO RESPONSIBLE FOR REPAIRING ANY AND ALL UTILITIES, PRODUCT PIPING, STRUCTURES, ETC. DAMAGED THROUGH DEMOLITION AND CONSTRUCTION OF THIS SITE THAT WAS INTENDED NOT TO BE DISTURBED OR DAMAGED.

SITE INFORMATION	
EXISTING	PROVIDED
AUTO PARKING	70
HANDICAP PARKING	03
TRUCK PARKING	87



SITE PLAN
1" = 60'



ROY B. PARSONS, AIA
REGISTERED ARCHITECT
5508 LONAS ROAD
KNOXVILLE, TENNESSEE 37909
865.588.7465



SITE PLAN
PILOT TRAVEL CENTER
INTERSTATE 40, EXIT 39
JAMESTOWN, NEW MEXICO 87347

DATE	REV	DESCRIPTION	BY

SHEET
C3.0
OF

GW - 032

ENGINEERING DRAWINGS & MAPS

SANITARY WASTEWATER LIFT STATION