

6/4/98

6/24/98

MS

KV

NSL

ABOVE THIS LINE FOR DIVISION USE ONLY

NEW MEXICO OIL CONSERVATION DIVISION

- Engineering Bureau -

SE

ADMINISTRATIVE APPLICATION COVER SHEET

THIS COVERSHEET IS MANDATORY FOR ALL ADMINISTRATIVE APPLICATIONS FOR EXCEPTIONS TO DIVISION RULES AND REGULATIONS

Application Acronyms:

[NSP-Non-Standard Proration Unit] [NSL-Non-Standard Location]
 [DD-Directional Drilling] [SD-Simultaneous Dedication]
 [DHC-Downhole Commingling] [CTB-Lease Commingling] [PLC-Pool/Lease Commingling]
 [PC-Pool Commingling] [OLS - Off-Lease Storage] [OLM-Off-Lease Measurement]
 [WFX-Waterflood Expansion] [PMX-Pressure Maintenance Expansion]
 [SWD-Salt Water Disposal] [IPI-Injection Pressure Increase]
 [EOR-Qualified Enhanced Oil Recovery Certification] [PPR-Positive Production Response]

[1] TYPE OF APPLICATION - Check Those Which Apply for [A]

[A] Location - Spacing Unit - Directional Drilling

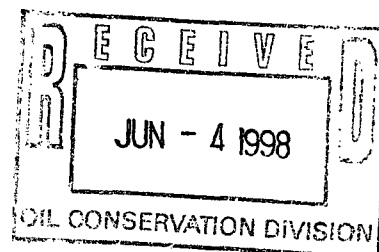
☒ NSL
 ☐ NSP
 ☐ DD
 ☐ SD

Check One Only for [B] and [C]

[B] Commingling - Storage - Measurement

☐ DHC
 ☐ CTB
 ☐ PLC
 ☐ PC
 ☐ OLS
 ☐ OLM

[C] Injection - Disposal - Pressure Increase - Enhanced Oil Recovery

☐ WFX
 ☐ PMX
 ☐ SWD
 ☐ IPI
 ☐ EOR
 ☐ PPR
[2] NOTIFICATION REQUIRED TO: - Check Those Which Apply, or ☐ Does Not Apply[A] ☐ Working, Royalty or Overriding Royalty Interest Owners[B] ☐ Offset Operators, Leaseholders or Surface Owner[C] ☐ Application is One Which Requires Published Legal Notice[D] ☒ Notification and/or Concurrent Approval by BLM or SLO

U.S. Bureau of Land Management - Commissioner of Public Lands, State Land Office

[E] ☐ For all of the above, Proof of Notification or Publication is Attached, and/or,[F] ☐ Waivers are Attached

[3] INFORMATION / DATA SUBMITTED IS COMPLETE - Statement of Understanding

I hereby certify that I, or personnel under my supervision, have read and complied with all applicable Rules and Regulations of the Oil Conservation Division. Further, I assert that the attached application for administrative approval is accurate and complete to the best of my knowledge and where applicable, verify that all interest (WI, RI, ORRI) is common. I understand that any omission of data (including API numbers, pool codes, etc.), pertinent information and any required notification is cause to have the application package returned with no action taken.

Note: Statement must be completed by an individual with supervisory capacity.

 Eileen Day
 Print or Type Name

 Eileen Day
 Signature

 Regulatory Supv.
 Title

 6-2-98
 Date

BURLINGTON RESOURCES

MID-CONTINENT DIVISION

June 1, 1998

Mr. Michael E. Stogner
Energy, Minerals and Natural Resources Dept.
Oil Conservation Division
2040 South Pacheco Street
Santa Fe, New Mexico 87505-5472

*7 miles southeast of
Alamogordo, NM*

RE: Proposed Horizontal Well
Standard Surface Location
*Non-Standard Sub-Surface Bottom Hole Location
Due to Topographic Limitations

Burlington Resources Oil & Gas Company, OGRID #26485
Corral Draw 10 Federal #1
Corral Draw Wolfcamp Gas Pool, Pool Code 84330
Surf. Loc.: SE/4 SW/4, UL-N, 800' FSL & 1650' FWL
Section 9, T25S, R29E, Eddy County, New Mexico
Lse. #NM 15303

Dear Mr. Stogner:

Burlington Resources Oil & Gas Company desires administrative approval for a non-standard gas producing area/sub-surface bottom hole gas well location for the vertical portion of the wellbore for the proposed horizontal well, pursuant to Division General Rule 104.F and 111.C(2) to be applicable to the Corral Draw Wolfcamp (Gas) Pool for the Corral Draw 10 Federal #1, located at a standard surface location SE/4 SW/4, 800' FSL & 1650' FWL, (Unit N) of Section 10, T25S, R29E, Eddy County, New Mexico. The S/2 of said Section 10, being a standard 320-acre gas spacing and proration unit for this interval is to be dedicated to said well.

Burlington's request for an unorthodox subsurface bottom hole location of SE/4 SW/4, 800' FSL & 1500' FWL, (Unit N) of Section 10, T25S, R29E, Eddy Co., NM, that will allow for potential drilling bit drift to the west due to natural drift tendencies during normal vertical rotary drilling operations. Our options to move the surface location to the east are closed by topographical limitation (i. e. archeological sites. and an existing caliche hill which slopes on the northeast side of the proposed surface well location. Enclosed is the location plat for this proposed well showing the surface location, proposed kick-off point, wolfcamp penetration point and the proposed horizontal bottom hole location at UL-O, 800' FSL, 1650' FEL of said Section 10.

Page -2-

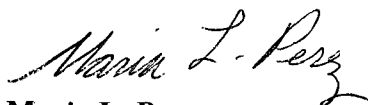
Enclosed is the federal application package for the permit to drill. Burlington Resources is the only affected offsets to the west side of this 320 acre proration unit which is the side which the bottom hole location encroches on.

The applicable drilling window or "producing area" within the Corral Draw Wolfcamp Gas Pool for said wellbore shall include that area within the subject 320-acre spacing and proration unit comprising of the S/2 of said Section 10 that is:

- (a) no closer than 660 feet to the North & South boundary of said 320-acre unit;
- (b) no closer than 1650 feet from the East and West Lines of said Section 10.

Burlington Resources will comply with all provision of Division General Rule 111 applicable in this matter. Please call me if you require additional information on this application.

Sincerely,



Maria L. Perez
Regulatory Representative
A/C 915-688-6906

cc: New Mexico Oil Conservation Division – Artesia
U. S. Bureau of Land Management – Roswell

(s:mlp1:Corral Draw 10 Fed. #1)

UNITED STATES
DEPARTMENT OF THE INTERIOR
BUREAU OF LAND MANAGEMENT

APPLICATION FOR PERMIT TO DRILL OR DEEPEN

1a. TYPE OF WORK

DRILL ☒

DEEPEN ☐

b. TYPE OF WELL

OIL
WELL ☐

GAS
WELL ☒

OTHER HORIZONTAL

SINGLE
ZONE ☒

MULTIPLE
ZONE ☐

2. NAME OF OPERATOR

BURLINGTON RESOURCES OIL & GAS COMPANY

3. ADDRESS AND TELEPHONE NO.

P.O. Box 51810 Midland, TX 79710-1810

915-688-6906

4. LOCATION OF WELL (Report location clearly and in accordance with any State requirements. *)
At surface

N. 800' FSL & 1650' FWL SURFACE LOC./ N. 600' FSL & 1500' FWL PENetration PT.

At proposed prod. zone

0. 800' FSL & 1650' FEL BOTTOM HOLE LOCATION

14. DISTANCE IN MILES AND DIRECTION FROM NEAREST TOWN OR POST OFFICE*

6 MILES SE FROM LOVING, NM

15. DISTANCE FROM PROPOSED*

LOCATION TO NEAREST
PROPERTY OR LEASE LINE, FT.
(Also to nearest drlg. unit line, if any) 800'

16. NO. OF ACRES IN LEASE

320

17. NO. OF ACRES ASSIGNED
TO THIS WELL

320

18. DISTANCE FROM PROPOSED LOCATION*

TO NEAREST WELL, DRILLING, COMPLETED,
OR APPLIED FOR, ON THIS LEASE, FT.

400' NE-DELAWARE OIL

19. PROPOSED DEPTH

13,214' MD

20. ROTARY OR CABLE TOOLS

ROTARY

21. ELEVATIONS (Show whether DF, RT, GR, etc.)

3031' GR

11,360' TVD

22. APPROX. DATE WORK WILL START*

9-10-98

23. PROPOSED CASING AND CEMENTING PROGRAM

SIZE OF HOLE	GRADE, SIZE OF CASING	WEIGHT PER FOOT	SETTING DEPTH	QUANTITY OF CEMENT
17-1/2"	13-3/8" H-40 STC	48#	600'	500 SXS C - CIRC. TO SURFACE
12-1/4"	9-5/8" K-55 LTC	36#	3,060'	1235 SXS C - CIRC. TO SURFACE
8-3/4"	7" P-110 LTC	26#	11,000'	1100 SXS H - TOC 2600'+/-
6-1/8"	4-1/2" P-110 HDL	15.1# LINER	10,700' - TD	100 SXS H AT LINER TOP

HORIZONTAL WELL

REQUESTING AN UNORTHODOX BOTTOM HOLE LOCATION FOR VERTICAL PORTION OF HOLE DUE TO POSSIBLE BIT
DRIFT. THE BOTTOM HOLE LOCATION FOR THE HORIZONTAL PORTION OF THE HOLE WILL BE A STANDARD LOCATION.

SEE LOCATION PLAT ATTACHED.

IN ABOVE SPACE DESCRIBE PROPOSED PROGRAM: If proposal is to deepen, give data on present productive zone and proposed new productive zone. If proposal is to drill or
deepen directionally, give pertinent data on subsurface locations and measured and true vertical depths. Give blowout preventer program, if any.

24.

SIGNED

Mary L. Perez

TITLE

REGULATORY REPRESENTATIVE

DATE

6-1-98

(This space for Federal or State office use)

PERMIT NO.

APPROVAL DATE

Application approval does not warrant or certify that the applicant holds legal or equitable title to those rights in the subject lease which would entitle the applicant to conduct operations thereon.

CONDITIONS OF APPROVAL, IF ANY:

APPROVED BY

TITLE

DATE

*See Instructions On Reverse Side

Title 18 U.S.C. Section 1001, makes it a crime for any person knowingly and willfully to make to any department or agency of the United States any false,
fictitious or fraudulent statements or representations as to any matter within its jurisdiction.

DISTRICT I
P. O. Box 1980
Hobbs, NM 88241-1980

State of New Mexico
Energy, Minerals, and Natural Resources Department

Form C-102
Revised 02-10-94
Instructions on back

DISTRICT II
P. O. Drawer DD
Artesia, NM 88211-0719

OIL CONSERVATION DIVISION
P. O. Box 2088
Santa Fe, New Mexico 87504-2088

Submit to the Appropriate
District Office
State Lease - 4 copies
Fee Lease - 3 copies

DISTRICT III
1000 Rio Brazos Rd.
Aztec, NM 87410

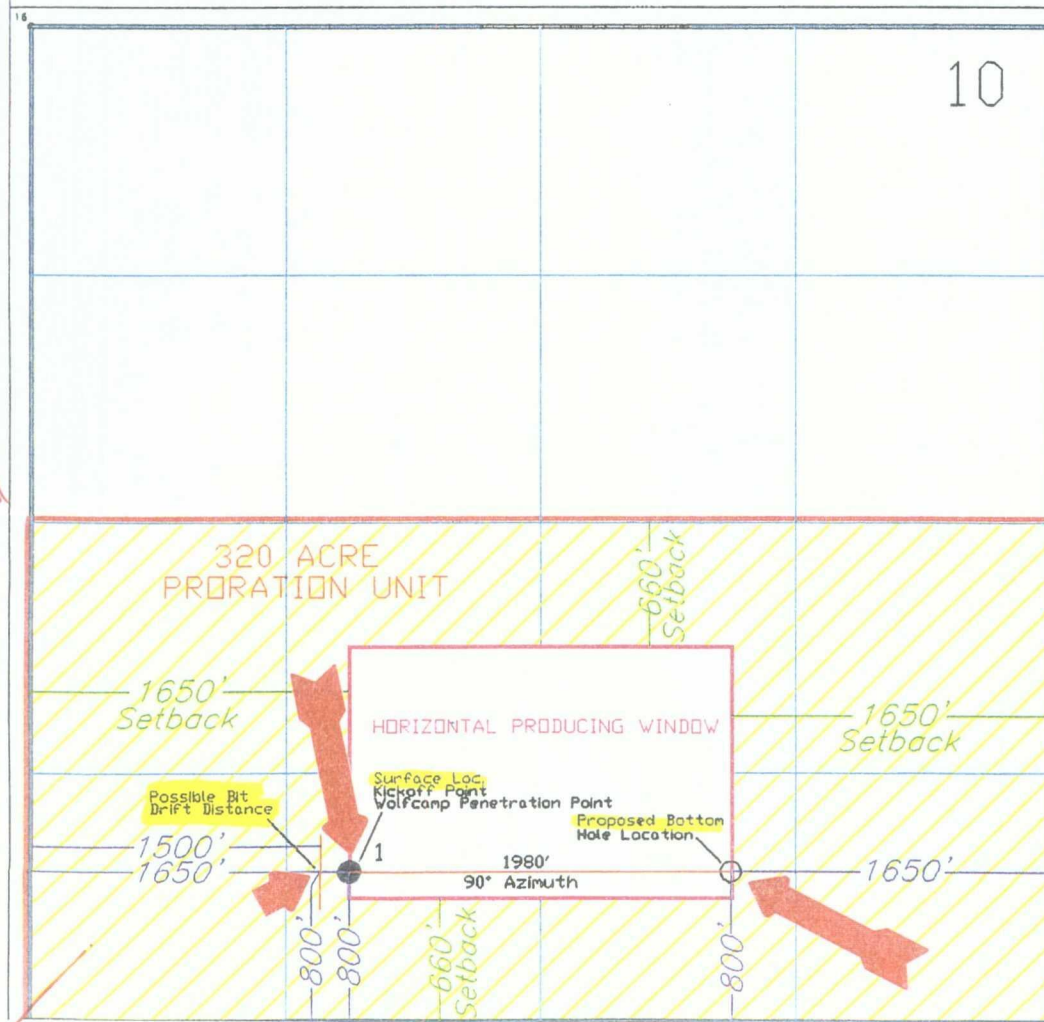
☐ AMENDED REPORT

DISTRICT IV
P. O. Box 2088
Santa Fe, NM 87507-2088

WELL LOCATION AND ACREAGE DEDICATION PLAT

1 API Number		2 Pool Code 84330		3 Pool Name Corral Draw Wolfcamp					
4 Property Code		5 Property Name Corral Draw 10 Federal						6 Well Number 1	
7 OGRID No. 26485		8 Operator Name BURLINGTON RESOURCES OIL & GAS COMPANY						9 Elevation 3031'	
10 SURFACE LOCATION									
UL or lot no. N	Section 10	Township 25 SOUTH	Range 29 EAST, N.M.P.M.	Lot Ida	Feet from the 800'	North/South line SOUTH	Feet from the 1650'	East/West line WEST	County EDDY
11 BOTTOM HOLE LOCATION IF DIFFERENT FROM SURFACE									
UL or lot no. 0	Section 10	Township 25S	Range 29E	Lot Ida	Feet from the 800	North/South line South	Feet from the 1650	East/West line East	County Eddy
12 Dedicated Acres 320		13 Joint or Infill		14 Consolidation Code		15 Order No.			

NO ALLOWABLE WELL BE ASSIGNED TO THIS COMPLETION UNTIL ALL INTERESTS HAVE BEEN
CONSOLIDATED OR A NON-STANDARD UNIT HAS BEEN APPROVED BY THE DIVISION



OPERATOR CERTIFICATION

I hereby certify that the information
contained herein is true and complete
to the best of my knowledge and belief.

Signature

Printed Name

Maria L. Perez

Title

Regulatory Representative

Date

5-13-98

SURVEYOR CERTIFICATION

I hereby certify that the well
location shown on this plat was
plotted from field notes of actual
surveys made by me or under
my supervision, and that the
same is true and correct to the
best of my belief.

Date of Survey

JANUARY 28, 1998

Signature and Seal of
Professional Surveyor

Certificate No.

ROGER M. ROBBINS P.S. #12128

JOB #56459 / 23NW / V.H.B.

(s:mlp1:Corral Draw 10 Federal #1.DOC)

OPERATORS NAME:	<u>Burlington Resources Oil & Gas Company</u>
LEASE NAME AND WELL NO.:	<u>Corral Draw 10 Federal #1</u>
LOCATION:	<u>UL-N, 800' FSL & 1650' FWL, Sec. 10, T25S, R29E</u>
FIELD NAME:	<u>Corral Draw Wolfcamp Gas</u>
COUNTY:	<u>Eddy County, New Mexico</u>
LEASE NUMBER:	<u>NM 15303</u>

The following information is to supplement BLM form 3160-3 Application for permit to drill in accordance with Onshore Oil and Gas Order No. 1:

9-POINT DRILLING PLAN
Horizontal Well

1. Name and estimated tops of important geologic formation/marker horizons.

<u>FORMATION</u>	<u>DEPTH</u>
Rustler	Surface
Salado	1,300'
Castille	2,300'
Delaware	3,085'
Bone Springs	6,850'
Wolfcamp	10,260'
Wolfcamp "A"	11,295'

2. Estimated depths at which the top and bottom of formations potentially containing usable water, oil, gas, or prospectively valuable deposits of other minerals are expected to be encountered and the operator's plans for protecting such resources.

Wolfcamp	10,260'
Wolfcamp "A" Limestone	11,295'

OTHER ZONES:

Delaware	3,085'
Bone Springs	6,850'

3. The operator's minimum specifications for Blowout Preventer (BOP) and related equipment to be used and schematic diagrams thereof showing sizes, pressure ratings, and the testing procedures and testing frequency. BOP and BOP - related equipment (BOPE) schematics shall include schematics of choke manifold equipment. Accumulator systems and remote controls shall be utilized.

Surface Csg

Install 13-3/8" SOW x 13-5/8" 3M psi WP casing head with 36" base plat.
Nipple up 13-5/8" 1500 psi WP annular preventer w/rotating head.
Test the 13-3/8" casing to 500 psi using rig pump and hold for 30 minutes.

Intermediate Csg

Install 13-5/8" 3M psi WP x 11" 5M psi WP casing spool. Nipple up 11" 5M x 13-5/8" 5M DSA. NU 13-5/8" 5M psi WP BOP's including annular w/rotating head. (API RP53 Fig 2.C.5 SRRAG). Test ram BOP's and choke manifold to 250 psi and 3,000 psi, test annular BOP to 250 psi and 1,500 psi utilizing a test plug and an independent tester..

Production Csg

Install 11" 5M psi x 7-1/16" 10M psi tbg head. Test head to 4,350 psi (70 % x Casing Pc of 6,230) or the wellhead manufacturer's recommendation, whichever is less. NU 7-1/16" 10M psi WP BOP's including annular w/rotating head (API RP53 fig 2.C.9 RSRRAG). Test ram BOP's and choke manifold to 250 psi and 10,000 psi, test annular BOP to 250 psi and 3,500 psi utilizing a test plug and an independent tester.

4. The proposed casing program including size, grade, weights, type of thread and coupling, and the setting depth of each string and its condition (new or acceptably reconditioned). For exploratory wells, or for wells as otherwise specified by the authorized officer, the operator shall include the minimum design factors for tensions, burst, and collapse that are incorporated into the casing design. In cases where tapered casing strings are utilized, the operator shall also include and/or setting depths of each portion.

CASING:

17-1/2" hole to 600'. Set 13-3/8", 48#, H-40, STC csg @ 600'

12-1/4" hole to 3060'. Set 9-5/8", 36#, K-55, LTC csg @ 3060'

8-3/4" hole to 11,000'. Set 7", 26#, P-110, LTC, csg @ See Remarks

Note: 7" casing point may vary between 10,250' - 11,000' depending on hole conditions. Offset data indicates ability to drill to 11,000' without any mud weight increase (i.e. 9.0 - 10.0 ppm base fluid). Casing needs to be set as close to kick off point as possible to minimize open vertical hole during lateral operations.

6-1/8" Pilot Hole to Vertical Total Depth of 11,450'

Plug Back to Kick-off Point @ \pm 11,100'

Target Azimuth = 90 Degrees

Final Inclination = 89 Degrees

Total Vertical Section = 1980'

Total Depth = 13,214' MD, 11,360' TVD

Run 4-1/2" 15.1# P-110 HDL Liner. Hang off in 7" casing with mechanical liner hanger. (Top of liner @ +/- 10,700').

5. The amount and type(s) of cement, including anticipated additives to be used in setting each casing string, shall be described. If stage cementing techniques are to be employed, the setting depth of the stage collars and amount and type of cement, including additives, and preflush amounts to be used in each stage, shall be given. The expected linear fill-up of each cemented string, or each stage when utilizing stage-cementing techniques, shall also be given.

- a.) Surface Hole (17-1/2" X 13 3/8" csg): **Lead** w/300 sxs Class "C" Lite Cmt + 2% CaCl₂, .25 pps Flocele. **Tail** w/200 sxs Class "C" + 2% CaCl₂.

(Circulate cement to surface).

- b.) Intermediate Hole (12-1/4" X 9 5/8" csg): **Single Stage**

Lead w/800 sxs Class "C" Lite + 2% CaCl₂ + 5 pps Gilsonite & .25 pps Flocele, **Tail** w/435 sxs Class "C", 2% CaCl₂.

(Circulate cmt to surface).

- c.) Production Hole (8-3/4" hole X 7" csg): **Two Stage.**

First Stage Lead w/500 sxs Class "H" 50/50 Poz, 2% Gel (Extender), 3 pps Salt (Accelerator), .3% Halad-322 (Fluid Loss), .25 pps Flocele, **Tail** w/100 sxs Class "H", .5% Halad-322 (Fluid Loss), .3% Halad-344 (Fluid Loss)

Second Stage Lead w/400 sxs Class "H" Lite, 5 pps Gilsonite, .25 pps Flocele. **Tail** w/100 sxs Class "C" + .4% HALAD-9 (Fluid Loss).

DV Tool @ +/- 7500'. TOC @ 2600' (inside 9-5/8").

- d.) Plugback Cement

+/- 150 sxs Class "H" + .75% CFR-3 (Dispersant), .5 pps D-AIR-1 (Defoamer) .6% HALAD-9 (Fluid Loss).

- e.) Liner top cement

DV Tool/ECP @ +/- 11,100'.

100 sxs Class "H" + .5% Halad-322 (Fluid Loss), .4% Halad-344 (Fluid Loss), .2% HR-5 (Retarder)

6. The anticipated characteristics, additives, use, and testing of drilling mud to be employed, along with the types and quantities of mud products to be maintained, shall be given. When air or gas drilling is proposed, the operator shall submit the following specific information:

Mud Program:

- 0-600': fresh water, gel, and lime system, MW 8.9 - 9.3 ppg.
- 600'-3060': brine, MW 10.0 - 10.2 ppg
- 3060'-11,000': cut brine mud MW 9.0 - 9.3 ppg
- 11,000'-13,214' (6-1/8" Pilot Hole & Lateral Section): weighted water base mud MW 10.0 - 15.0 ppg.

7. The anticipated testing, logging, and coring procedures to be used, including drill stem testing procedures, equipment, and safety measures.

- a. DST Program: None Planned
- b. Core: None Planned
- c. Mud Logging: 2000' to TD

- d. Logs to be run: Halliburton CNL/LDT/DLL/MSFL/GR/CAL/BHC, FMI below 7" Logs to be run in vertical hole only

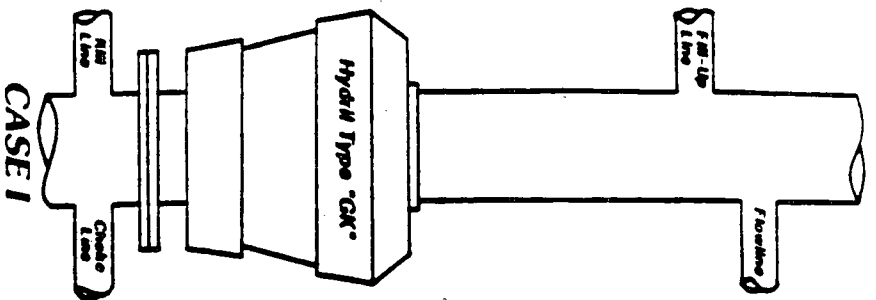
8. The expected bottom-hole pressure and any anticipated abnormal pressures, temperatures or potential hazards that are expected to be encountered, such as lost circulation zones and hydrogen sulfide. The operator's plans for mitigating such hazards shall be discussed. Should the potential to encounter hydrogen sulfide exist, the mitigation procedures shall comply with the provisions of Onshore Oil and Gas Order No. 6.

Potential for abnormal pressure exists from the top of the Wolfcamp to TD. Bottom hole pressures at TD is estimated at 7200 psi. Bottom hole temperature 170 F. There is no anticipated Hydrogen Sulfide in this known drilling area. .

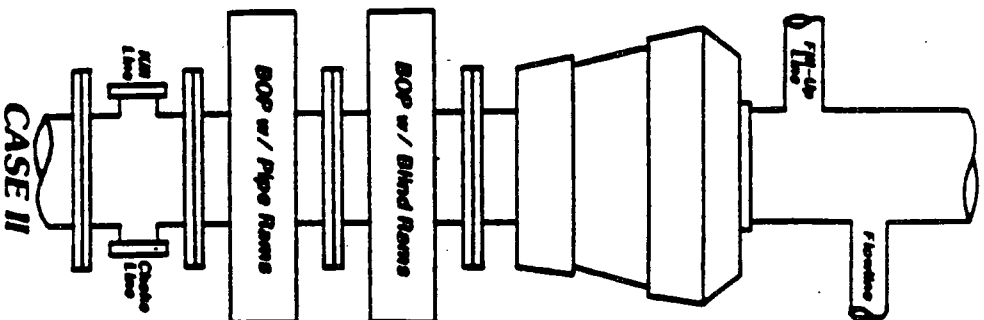
9. Any other facets of the proposed operation which the operator wishes for BLM to consider in reviewing the application.

Anticipated time expected to do this work is 61 days. (Horizontal Well)

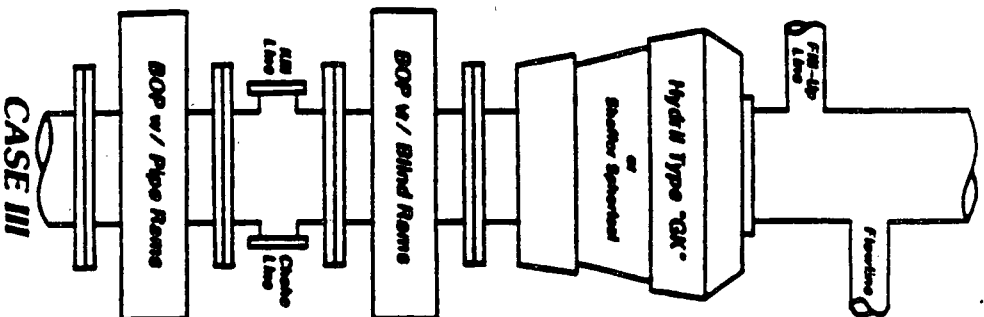
MINIMUM BLOWOUT PREVENTER REQUIREMENTS



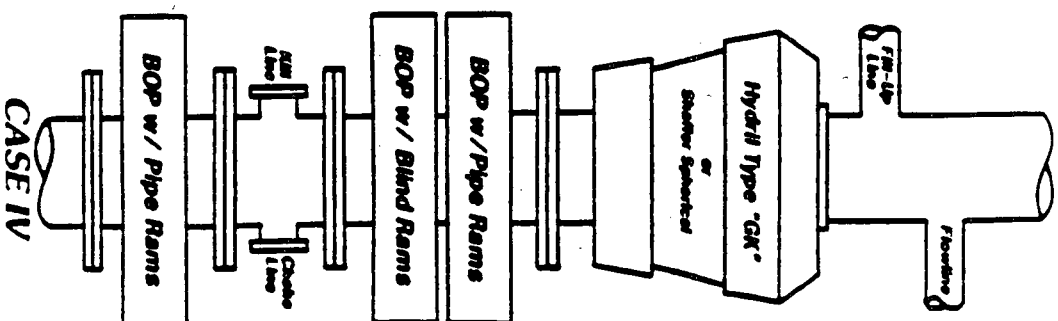
CASE I



CASE II



CASE III



CASE IV

CASE I: 13 5/8" 1500 PSI WP Annular w/ Rotating Head To Be Installed On 13 3/8" Csg

CASE II: 11" 5M PSI Double Rams w/ 3M PSI Annular To Be Installed On 9 5/8" Csg.

CASE IV: 7 1/16" 10M PSI Double Ram (Pipe On Top) Above Drilling Spool

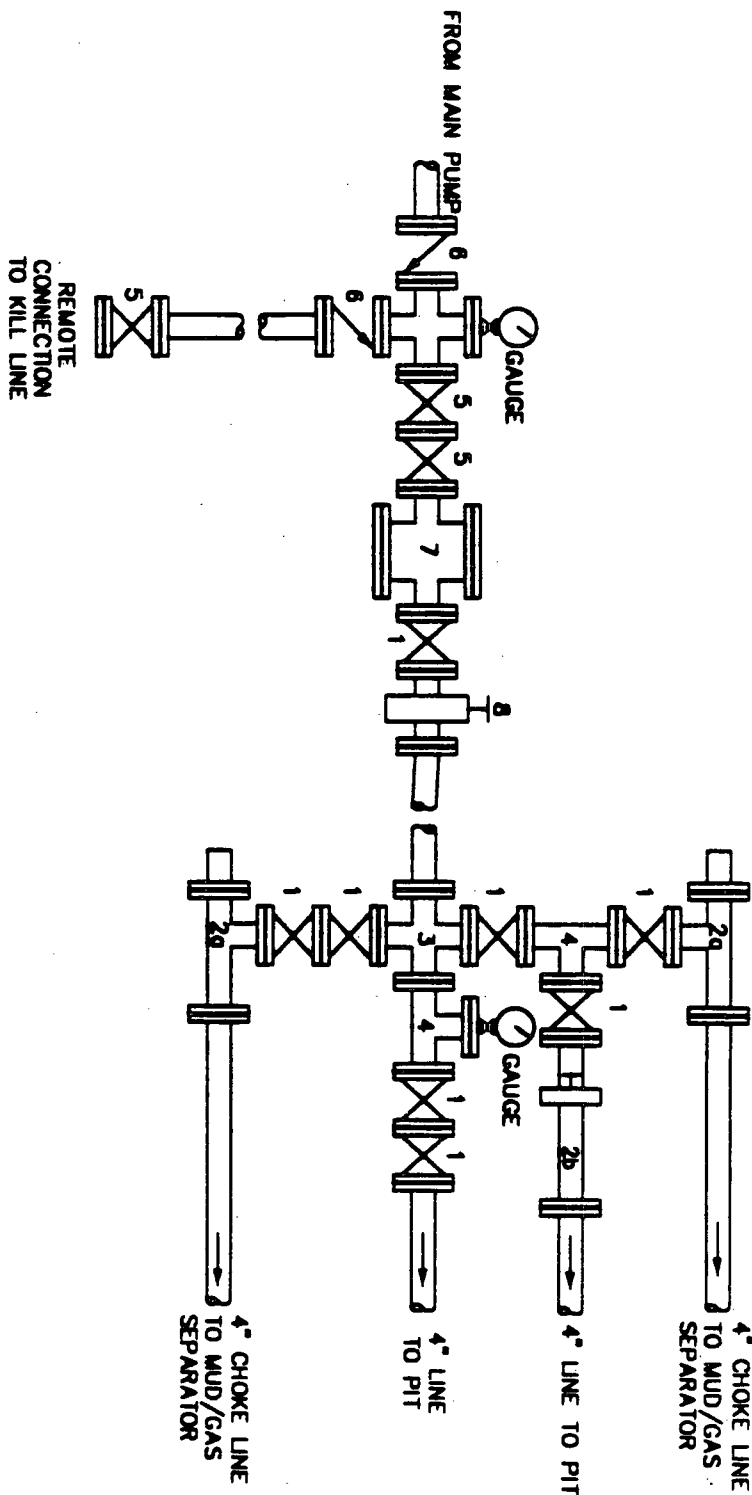
7 1/16" 10M PSI Single Ram Below Drilling Spool

7 1/16" 5M PSI Annular w/ Rotating Head

10M PSI Choke Manifold w/ Remote KHI Line Connection

All To Be Installed On 7" Csg.

CHOKE MANIFOLD SCHEMATIC



LEGEND

1. 4" FLANGED ALL STEEL VALVE MUST BE EITHER CAMERON "F", HALLIBURTON LOW TORQUE, OR SHAFFER FLO-SEAL.
- 2a. 2" 9/16" REMOTE OPERATED FLANGED CHOKE, FULL OPENING & EQUIPPED W/HARD TRIM.
- 2b. 2" 9/16" MANUAL OPERATED FLANGED CHOKE, FULL OPENING & EQUIPPED W/HARD TRIM.
3. 4" x 4" FLANGED STEEL CROSS.
4. 4" FLANGED STEEL TEE.
5. 2" FLANGED ALL STEEL VALVE (TYPE AS IN #1).
6. 2" FLANGED CHECK VALVE.
7. DRILLING SPOOL W/ 2" x 4" FLANGED STEEL OUTLET.
8. 4" PRESSURE OPERATED GATE VALVE.

NOTES

CHOKE MANIFOLD MAY BE LOCATED IN ANY CONVENIENT POSITION. USE ALL STEEL FITTINGS THROUGHOUT. MAKE 90° TURNS WITH BULL PLUGGED TEES ONLY. NO FIELD WELDING WILL BE PERMITTED ON ANY OF THE COMPONENTS OF THE CHOKE MANIFOLD AND RELATED EQUIPMENT UPSTREAM OF THE CHOKES. THE CHOKE SPOOL AND ALL LINES AND FITTINGS MUST BE AT LEAST EQUIVALENT TO THE TEST PRESSURE OF THE PREVENTERS REQUIRED. INDEPENDENT CLOSING CONTROL UNIT WITH CLEARLY MARKED CONTROLS TO BE LOCATED ON DERRICK FLOOR NEAR DRILLER'S POSITION.

12-POINT SURFACE USE PLAN OF OPERATIONS

Burlington Resources Oil & Gas Company

Corral Draw 10 Federal #1

N, 800' FSL & 1650' FWL, Sec. 10, T25S, R29E

Corral Draw Wolfcamp Gas Field

Eddy County, New Mexico NM 15303

1. **Existing Roads:** A legible map (USGS topographic, county road, or other such map) labeled and showing the access route to the location, shall be used for locating the proposed well site in relation to a town, village, or other locatable point, such as a highway or county road. All access roads shall be appropriately labeled. Any plans for improvement and/or maintenance of existing roads shall be provided. All roads shall be provided. All roads shall be improved or maintained in a condition the same as or better than before operations. The information provided for use and construction of roads will also be used by BLM for the required Plan of Development for a R/W application as described in Section II C of this Order No. 1.

See Exhibit "A" - topographic land surveyors plat showing existing roads and directions to well site.

2. **Access Roads to be Constructed or Reconstructed:** All permanent and temporary access roads to be constructed or reconstructed in connection with the drilling of the proposed well shall be appropriately identified and submitted on a map or plat. The proposed route to the proposed drill site shall be shown, including distances from the point where the access route exists established roads. All permanent and temporary access roads shall be located and designed to implement the goals of transportation planning and meet applicable standards of the appropriate SMA, and shall be consistent with the needs of the users. Final selection of the route location may be accepted by the SMA as early as the predrill inspection or during approval of the APD.

See Exhibit "A" plat shows 602' of proposed lease road to be constructed..

3. **Location of Existing Wells:** This information shall be submitted on a map or plat, which includes all recorded wells (water, injection, or disposal, producing, or being drilled) within a 1-mile radius of the proposed location.

See Exhibit "B" - portion of land map showing surrounding wells in area.

4. **Location of existing and/or proposed production facilities:** For facilities planned either on or off the well pad, a plat or diagram shall be included showing, to the extent known or anticipated, the location of all production facilities and lines to be installed if the well is successfully completed for production. If new construction is planned, the dimensions of the facility layouts are to be shown. This information for off-pad production facilities may be used by BLM for R/W application information as specified in Section II C of Order No. 1.

Production facilities will be built at location.

5. **Location of Types of Water Supply:** Information concerning water supply, such as rivers, creeks, springs, lakes, ponds, and wells, may be shown by quarter-quarter section on a map or plat, or may be described in writing. The source and transportation method for all water to be used in drilling the proposed well shall be noted if the source is located on Federal or Indian Lands or if water is to be used from a Federal or Indian project. If the water is obtained from other than Federal or Indian lands, the location and transportation method shall be identified. Any access roads crossing Federal or Indian lands that are needed to haul the water shall be described as provided in paragraphs (1) and (2) of this Section. If a water supply well is to be drilled on the lease, the APD shall so state. The authorized officer of BLM may require the filing of a separate APD of a water well.

No available surface or sub-surface fresh water exists in the vicinity of the proposed well. Drilling water will be transported or pumped to the drill site from the nearest commercial source.

6. **Construction Materials:** The operator shall state the character and intended use of all construction material, such as sand, gravel, stone, and soil material. If the materials to be used are Federally owned, the proposed source shall be shown either on a quarter-quarter section on a map or plat, or in a written description.

Caliche will be obtained from well site.

Methods of Handling Waste Disposal: A written description of the methods and locations proposed for safe containment and disposal of each type of waste material (e.g. cuttings, garbage, salts, chemicals, sewage, etc.) that results from the drilling and completion of the proposed well shall be provided.

- Drill cuttings - disposed into drilling pits.
- Drill fluids - allowed to evaporate in drill pits until pits dry.
- Produced water during testing - drill pits.
- Produced oil during testing - storage tank until sold.
- Current laws and regulations pertaining to disposal of human waste will be observed.
- Reserve pit will be plastic lined.

- Waste paper, garbage, and junk will be disposed of into a special container on location and removed regularly to an approved landfill site. All waste material will be covered with a screen or lid and contained to prevent scattering by wind.
- All trash and debris will be removed from well site within 30 days after drilling and/or completion operations are finished.

8. **Ancillary Facilities:** All ancillary facilities such as camps and airstrips shall be identified on a map or plat. Information as to location, land area required, and methods to be used in construction shall also be provided.

No Ancillary Facilities are required.

9. **Well Site Layout:** A plat of suitable scale (not less than 1 inch = 50 feet) showing the proposed drill pad, reserve pit location, access road entry points, and its approximate location with respect to topographic features, along with cross section diagrams of the drill pad and the reserve pit showing all cuts and fills and the relation to topography. The plat shall also include the approximate proposed location and orientation of the drilling rig, dikes and ditches to be constructed, and topsoil and/or spoil material stockpiles.

See Exhibit "C". Sketch for the well pad .

10. **Plans for Reclamation of the Surface:** A proposed interim plan for reclamation stabilization of the site and also final reclamation plan shall be provided. The interim portion of the plan shall cover areas of the drillpad not needed for production. The final portion of the plan shall cover final abandonment of the well. The plan shall include, as appropriate, configuration of the reshaped topography, drainage systems, segregation of spoil materials, surface manipulations, redistribution of topsoil, soil treatments, revegetation, and any other practices necessary to reclaim all disturbed areas, including any access roads and pipelines. An estimate of the time for commencement and completion of reclamation operations, including consideration of weather conditions and other local uses of the area, shall be provided.

- After completion of drilling and/or completion of operations, all equipment and other material not needed for operations will be removed. Pits will be filled and locations cleaned of trash and junk to leave well in as aesthetically pleasing a condition as possible.
- Any unguarded pits containing fluids will be fenced until filled.
- After abandonment of well, surface restoration will be in accordance with the Bureau of Land Management Surface Requirements.

11. **Surface Ownership:** The surface ownership (Federal, Indian, State or private) and administration (BLM, FS, BIA, Department of Defense, etc.) at the well location, and of all lands crossed by roads which are to be constructed or upgraded, shall be indicated. Where the surface of the proposed well site is privately owned, the operator shall provide the name, address and telephone number of the surface owner.

Bureau of Land Management
620 E. Greene Street
Carlsbad, New Mexico 88220

12. **Other Information:** Type of bond. The operator shall be covered by a bond in its own name as principal, or by a bond in the name of the lessee or sublessee.

Burlington Resources Oil & Gas is covered by a statewide bond.

Operator's Representatives:

Field representatives (Responsible for compliance with approved surface use operations plan.)

Burlington Resources Oil & Gas Company
P.O. Box 837
Hobbs, NM 88240
Office: 505-393-5844

Mr. Ed Jackson, Sr. Drilling Foreman
Artesia, NM
Home: 505-746-6173
Mobil: 505-746-7159

Mr. Frank Raybon, Drilling Foreman
Eunice, NM
Home: 505-394-2449
Mobile: 505-369-5367

Jim Kramer, Sr. Staff Drilling Engineer
P.O. Box 51810
Midland, TX 79710-1810
Office: 915-688-6843
Home: 915-694-2499

Cash Smithwick, Drilling Superintendent
P.O. Box 51810.
Midland, TX 79710-1810
Office: 915-688-9051
Home: 915-685-7053
Pager: 915-495-6173

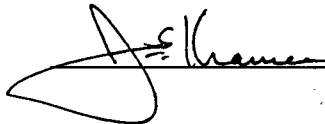
OPERATORS CERTIFICATION

I hereby certify that I, Jim Kramer, Senior Staff Drilling Engineer, under my direct supervision, have inspected the proposed drill site and access route that I am familiar with the conditions that currently exist; that the statements made in the APD package are, to the best of my knowledge, true and correct, and that the work associated with operations proposed herein will be performed by **not yet determined** contractors and subcontractors in conformity with this APD package and the terms and conditions under which it is approved. I also certify responsibility for the operations conducted on that portion of the leased lands associated with this application, with bond coverage being provided under BLM **statewide** bond. This statement is subject to the provisions of 18 U.S.C. 1001 for the filing of a false statement.

DATE: 5-18-98

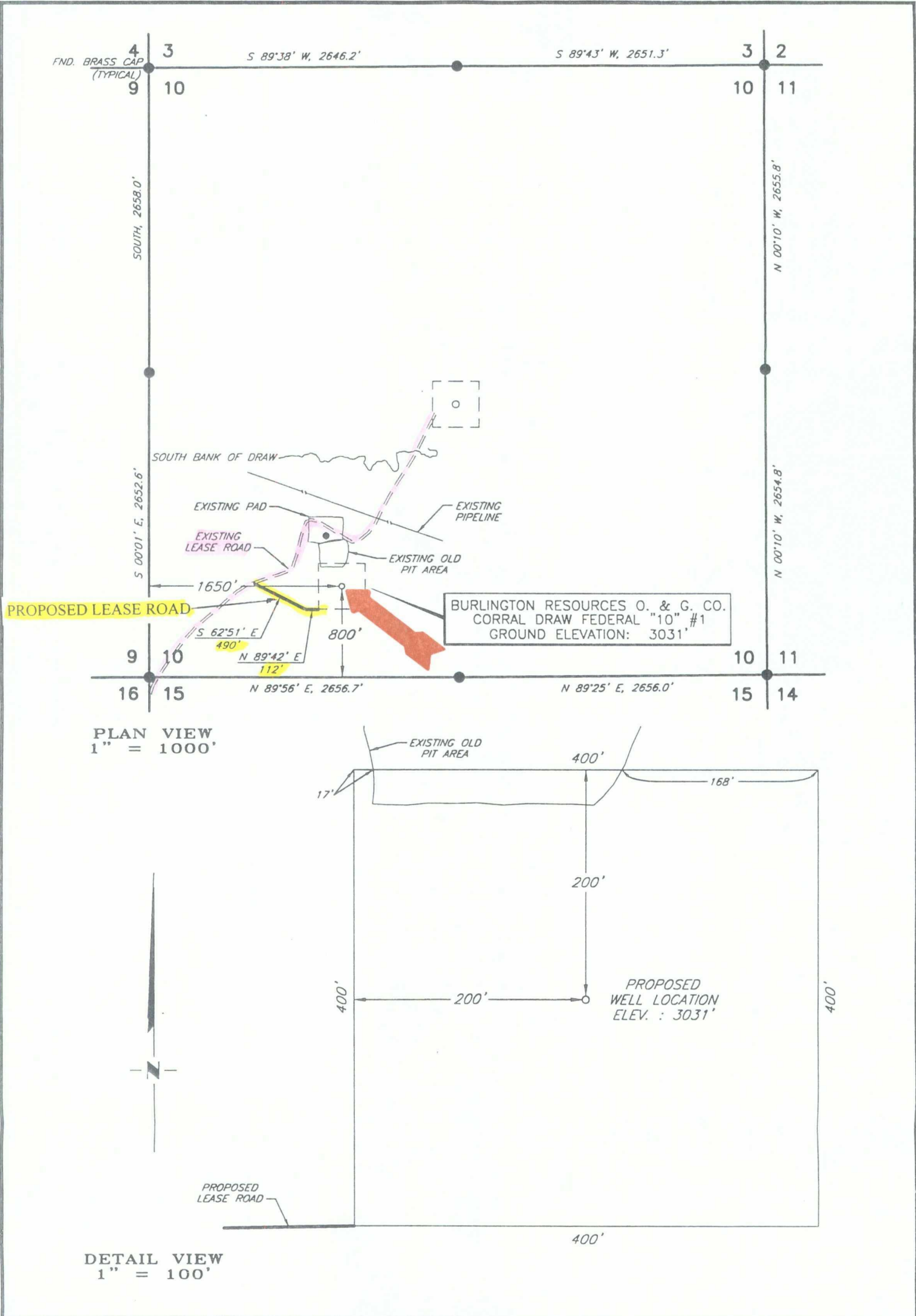
NAME AND TITLE: Jim Kramer, Senior Staff Drilling Engineer

SIGNATURE:

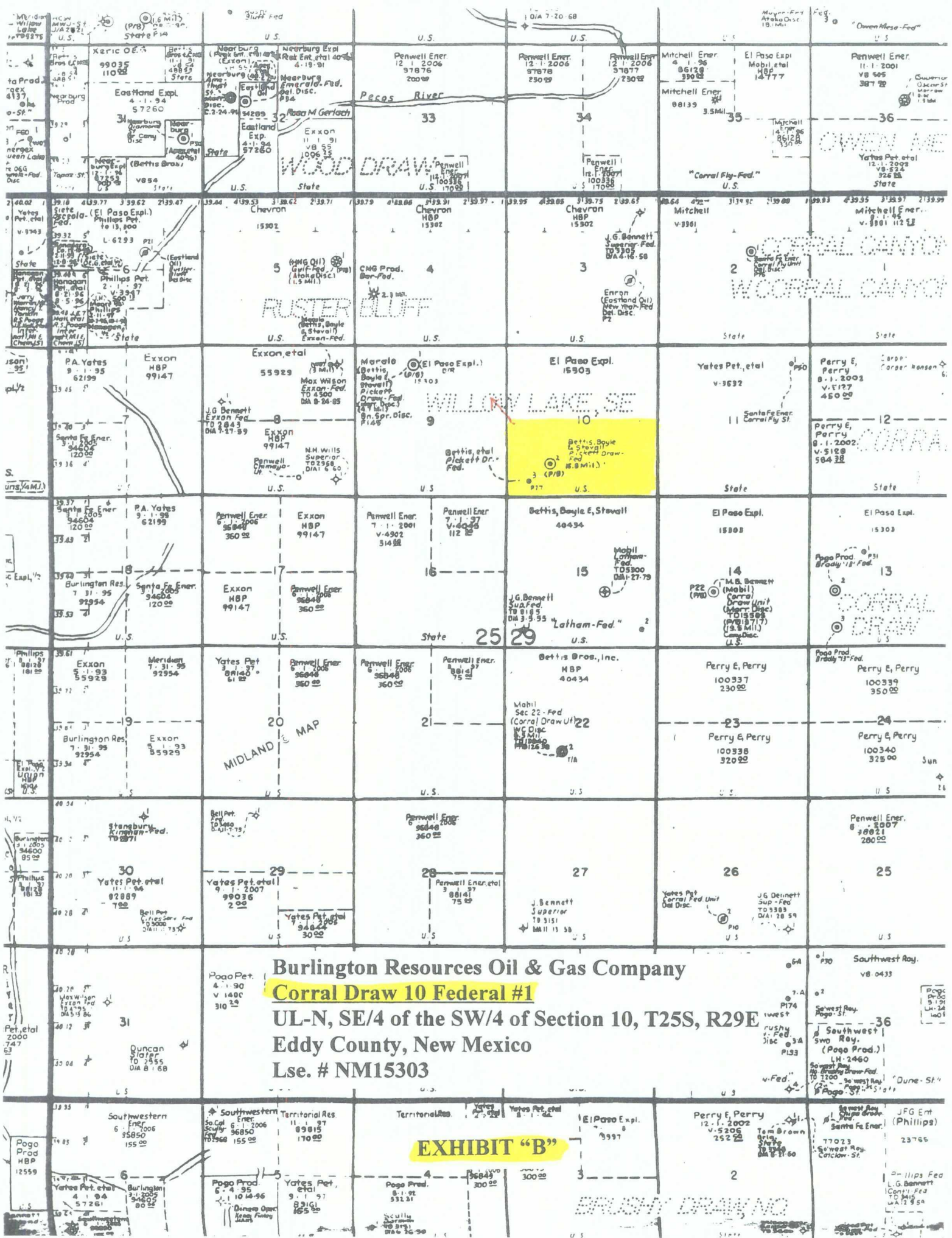
A handwritten signature in dark ink, appearing to read "Jim Kramer", is written over a horizontal line.

WELL LOCATION AND LEASE ROAD IN
SECTION 10, T-25-S, R-29-E, N.M.P.M.
EDDY COUNTY, NEW MEXICO

EXHIBIT "A"



				BURLINGTON RESOURCES OIL & GAS CO.	SCALE: AS SHOWN
					DATE: JANUARY 28, 1998
NO.	REVISION	DATE	BY	SURVEYING AND MAPPING BY TOPOGRAPHIC LAND SURVEYORS MIDLAND, TEXAS	JOB NO.: 56459-F
SURVEYED BY: R.R.					23 NW
DRAWN BY: V.H.B.					
APPROVED BY: R.M.R.					
					SHEET : 1 OF 1



Burlington Resources Oil & Gas Company

Corral Draw 10 Federal #1

UL-N, SE/4 of the SW/4 of Section 10, T25S, R29E

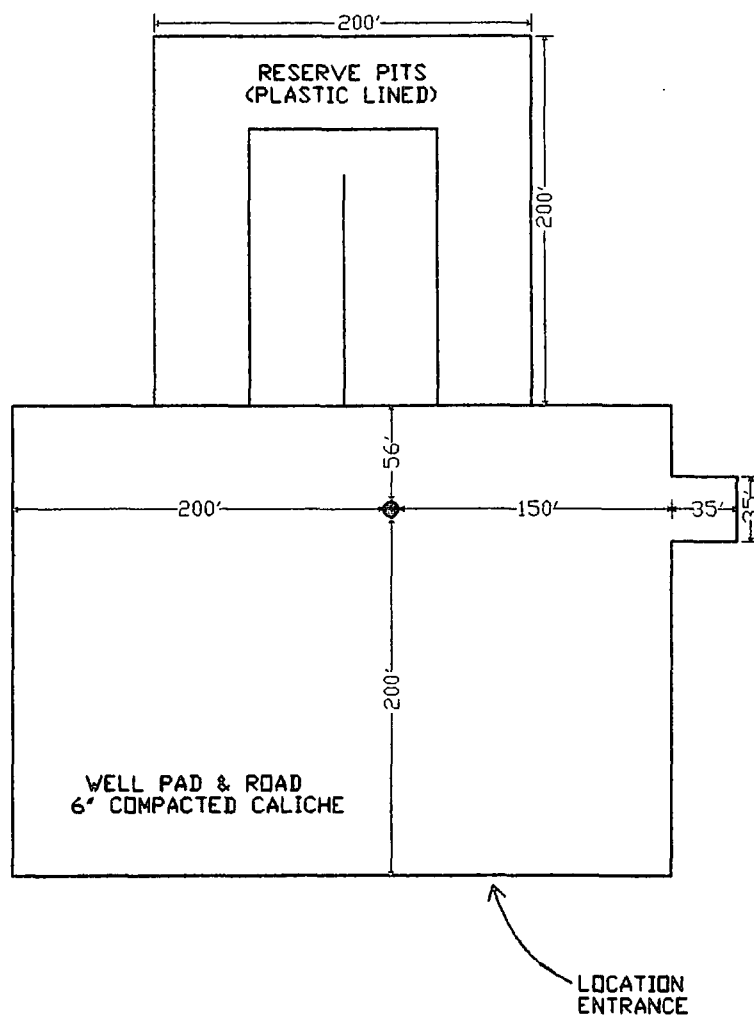
Eddy County, New Mexico

Lse. # NM15303

EXHIBIT "B"

EXHIBIT "C"

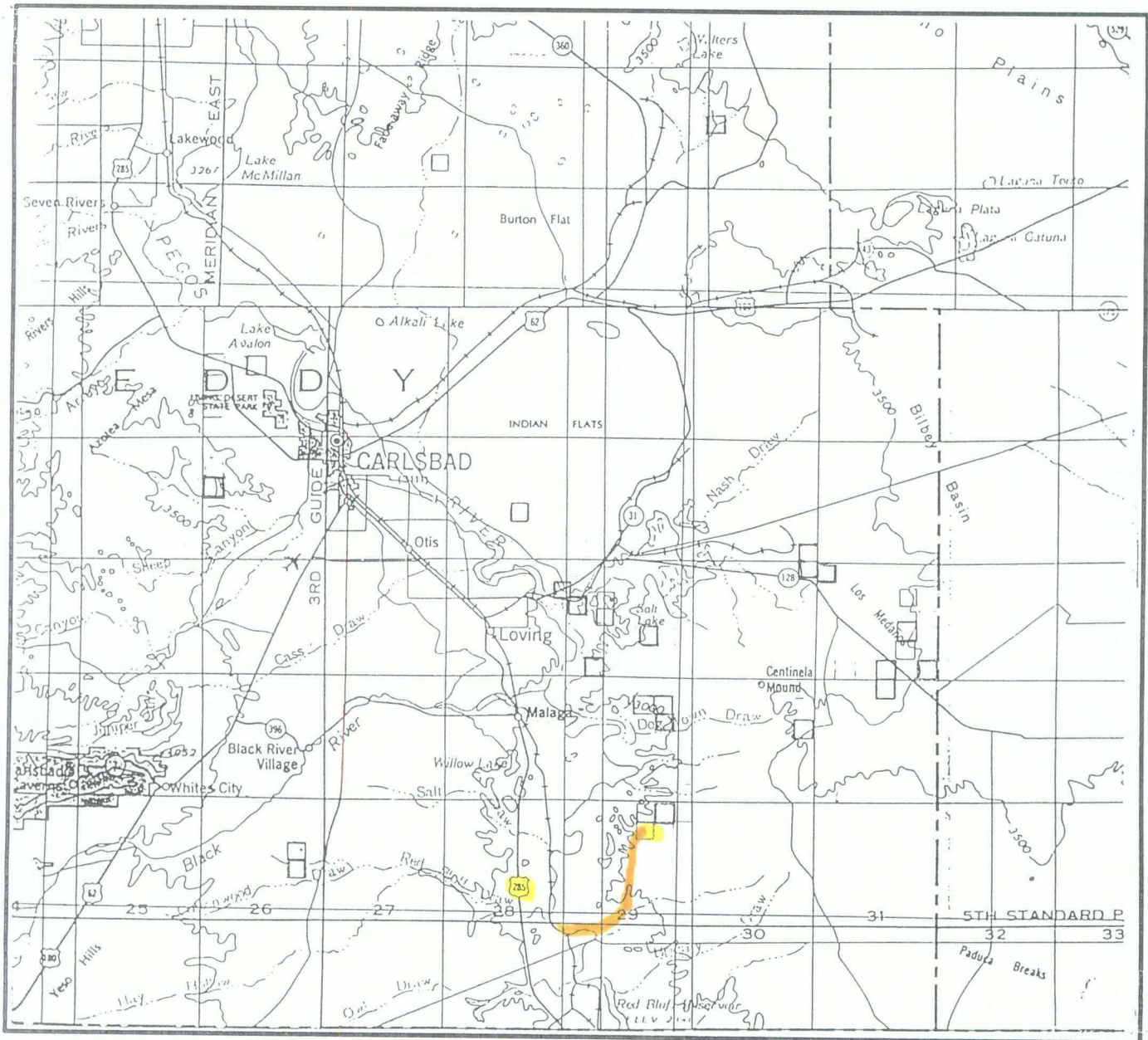
BURLINGTON RESOURCES OIL & GAS COMPANY
MID-CONTINENT DIVISION
DRILL WELL LOCATION SPECIFICATIONS



700' x 700' WELL SITE

DWG#: LOCPLT

VICINITY MAP



SECTION 10 TWP 25-S RGE 29-E
 SURVEY NEW MEXICO PRINCIPAL MERIDIAN
 COUNTY EDDY STATE NM
 DESCRIPTION 800' FSL & 1650' FWL

OPERATOR BURLINGTON RESOURCES OIL & GAS CO.

LEASE CORRAL DRAW FEDERAL "10" #1

DISTANCE & DIRECTION FROM THE JCT. OF PAVED COUNTY
ROAD & U.S. HWY. 285, GO EAST 4.1 MILES ON PAVED
ROAD, THENCE NORTHEAST 2.0 MILES ON LEASE ROAD,
ROAD, THENCE NORTH 4.5 MILES & NORTHEASTERLY 0.3
ON MILE ON LEASE ROAD TO A POINT ±250' NORTHWEST
OF THE LOCATION.



This location has been very carefully staked on the ground according to the best official survey records, maps, and other data available to us.
 Review this plot and notify us immediately of any possible discrepancy.

TOPOGRAPHIC LAND SURVEYORS

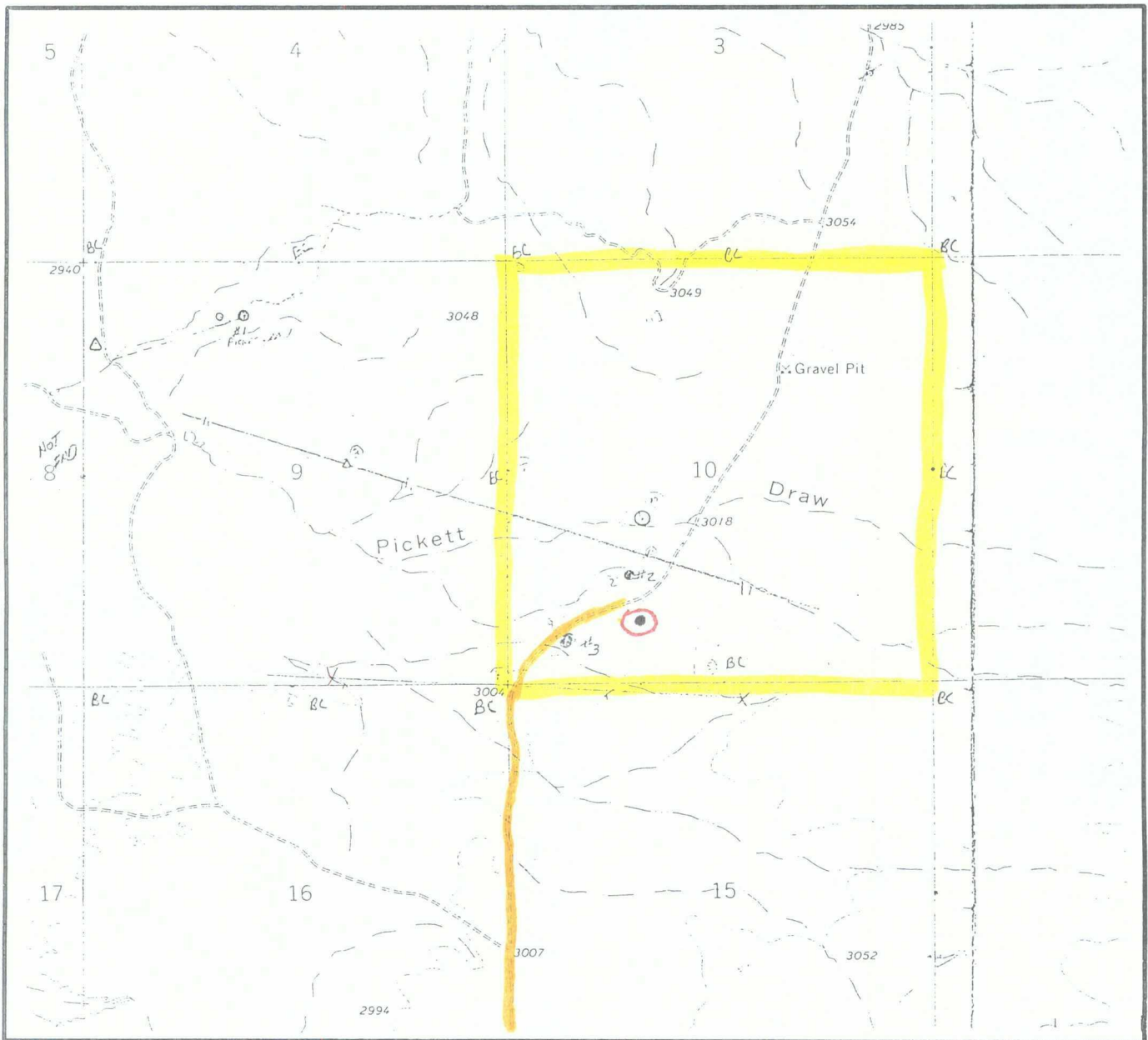
Surveying & Mapping for the Oil & Gas Industry

1307 N. HOBART
 PAMPA, TX. 79065
 (800) 658-6382

6709 N. CLASSEN BLVD.
 OKLAHOMA CITY, OK. 73116
 (800) 654-3219

2903 N. BIG SPRING
 MIDLAND, TX. 79705
 (800) 767-1653

LOCATION & ELEVATION VERIFICATION MAP



SCALE : 1" = 2000'

CONTOUR INTERVAL 10'

SECTION 10 TWP 25-S RGE 29-E
SURVEY NEW MEXICO PRINCIPAL MERIDIAN
COUNTY EDDY STATE NM
DESCRIPTION 800' FSL & 1650' FWL
ELEVATION 3031'

OPERATOR BURLINGTON RESOURCES OIL & GAS CO.
LEASE CORRAL DRAW FEDERAL "10" #1

U.S.G.S. TOPOGRAPHIC MAP
PIERCE CANYON, NEW MEXICO

SCALED LAT. N 32°08'21.8"
LONG. W 103°58'30.3"



This location has been very carefully staked on the ground according to the best official survey records, maps, and other data available to us.
Review this plat and notify us immediately of any possible discrepancy.

TOPOGRAPHIC LAND SURVEYORS

Surveying & Mapping for the Oil & Gas Industry

1307 N. HOBART
PAMPA, TX. 79065
(800) 658-6382

6709 N. CLASSEN BLVD.
OKLAHOMA CITY, OK. 73116
(800) 654-3219

2903 N. BIG SPRING
MIDLAND, TX. 79705
(800) 767-1653



NEW MEXICO ENERGY, MINERALS
& NATURAL RESOURCES DEPARTMENT

OIL CONSERVATION DIVISION
2040 South Pacheco Street
Santa Fe, New Mexico 87505
(505) 827-7131

JUL 20 1998

June 30, 1998

Burlington Resources Oil & Gas Company
Attention: Maria L. Perez
P. O. Box 51810
Midland, Texas 79710-1810

SEE ATTACHMENTS
7-16-98
Cotnam Central Exploration,
Inc & Permian Energy, Inc
are offset operators to the
SW corner & were notified
by certified mail on 7-6-98.
Burlington Resources is
offset to the West &
NW corner of gas
production unit.

**RE: Administrative application dated June 1, 1998
for a subsurface gas producing
area/bottomhole gas well location in the
Wolfcamp formation for your proposed Corral
Draw "10" Federal Well No. 1 to be drilled
from a surface location 800 feet from the South
line and 1650 feet from the West line (Unit N)
of Section 10, Township 25 South, Range 29
East, NMPM, Eddy County, New Mexico.**

Dear Ms. Perez:

Per my review of the subject application, I found that the required notice to affected offsets [see Division statewide Rule 104.F(3)] was inadequate in this instance. Please provide me with the required proof of such notification under Rule 104.F(4).

Should you have any questions after first conferring with Ms. Donna Williams in your office in Midland, Texas, you may contact me in Santa Fe at (505) 827-8185.

Sincerely,

TO: → Michael E. Stogner
Chief Hearing Examiner/Engineer

cc: New Mexico Oil Conservation Division - Artesia
U. S. Bureau of Land Management - Carlsbad

New Susheer Pote
8-10-98

Thanks
Mona L. Pigg
915-688-6906

(2) The Division Director shall have authority to grant an exception to the well location requirements of Sections 104.B and 104.C above or to the well location requirements of special pool rules without notice and hearing when the necessity for such unorthodox location is based upon geologic conditions, archaeological conditions, topographical conditions, or the recompletion of a well previously drilled to a deeper horizon provided said well was drilled at an orthodox or approved unorthodox location for such original horizon. [1-1-82...2-1-96]

(3) Applications for administrative approval of unorthodox locations pursuant to Rule 104.F(2), above, shall be accompanied by a plat showing the subject spacing unit, its proposed unorthodox well location, the diagonal and adjoining spacing units and/or leases (whichever is applicable) and wells, and a list of affected parties. If the proposed unorthodox location is based upon topography or archaeology, the plat shall also show and describe the existent topographical or archaeological conditions. If the proposed unorthodox location is based upon geology, the application shall include appropriate geologic exhibits and a discussion of the geologic conditions which result in the necessity for the unorthodox location. [2-9-66...2-1-96]

(a) Adjoining and diagonal spacing units shall be defined as those immediately adjacent existing spacing units in the same pool(s) as the proposed unorthodox well and towards which the unorthodox well location encroaches. [2-9-66...2-1-96]

(b) Affected parties shall be defined as those parties who own interests in leases or operate wells on adjoining or diagonal spacing units and include:

(i) the designated operator of any adjoining or diagonal spacing unit producing from the same pool(s) as the proposed well;

(ii) in the absence of an operator, all lessees of record of any diagonal or adjoining lease owning interests in the same pool(s) as the proposed well; and

(iii) in the absence of an operator or lessee, all owners of record of unleased mineral interests in the same pool(s) as the proposed well. [2-9-66...2-1-96]

(4) The applicant shall submit a statement attesting that applicant, on or before the same date the application was submitted to the Division, has sent notification to the affected parties by submitting a copy of the application, including a copy of the plat described in Rule 104.F(3) above by certified or registered mail-return receipt in accordance with Rule 1207(A) (5) advising them that if they have an objection it must be filed in writing within twenty days from the date notice was sent. The Division Director may approve the unorthodox location upon receipt of waivers from all said parties or if no said party has entered an objection to the unorthodox location within 20 days after the Director has received the application. [2-9-66...2-1-96]

(5) The Division Director may set any application for administrative approval of an unorthodox location for public hearing, and may require that a directional survey be run in the unorthodox well to establish the actual location of the producing interval(s). [1-1-82...2-1-96]

104.G. Whenever an exception is granted, the Division may take such action as will offset any advantage which the person securing the exception may obtain over other producers by reason of the unorthodox location. [1-1-50...2-1-96]

104.H. If the drilling tract is within an allocated oil pool or is

- (i) Affected parties in this instance shall be defined as those parties who own interests in the applicable half quarter section (80-acre spacing), quarter section (160-acre spacing), half section (320-acre spacing), or section (640-acre spacing) in which the non-standard spacing unit is situated and which acreage is not included in said non-standard spacing unit;
 - (ii) the designated operator of any adjoining or diagonal spacing unit producing from the same pool(s) as the proposed non-standard spacing unit;
 - (iii) in the absence of an operator, all lessees of record of any diagonal or adjoining lease owning interests in the same pool(s) as the proposed non-standard spacing unit; and
 - (iv) in the absence of an operator or lessee, then to all owners of record of unleased mineral interests. [5-25-64...2-1-96]
- (d) The applicant shall submit a statement attesting that applicant, on or before the same date the application was submitted to the Division, has sent notification to the affected parties by submitting a copy of the application, including a copy of the plat described in Subpart (c) above by certified or registered mail-return receipt in accordance with Rule 1207(6)(a) advising them that if they have an objection it must be filed in writing within twenty days from the date notice was sent. The Division Director may approve the non-standard spacing unit upon receipt of waivers from all said parties or if no said party has entered an objection to the non-standard spacing unit within 20 days after the Director has received the application. [5-25-64...2-1-96]
- (e) The Division Director may set any application for administrative approval for a non-standard spacing unit for public hearing. [5-25-64...2-1-96]

(3) Number of Wells Per Spacing Unit in Non-Prorated Gas Pools:

Unless otherwise permitted by special pool rules or authorized after notice and hearing, only one (1) well per spacing unit is permitted in non-prorated pools. [5-25-64...2-1-96]

104.E. Form C-102, "Well Location and Acreage Dedication Plat", for any well shall designate the exact legal subdivision allotted to the well and Form C-101, "Application for Permit to Drill, Deepen, or Plug Back", will not be approved by the Division without such proper designation of acreage. [12-29-52...2-1-96]

104.F. UNORTHODOX LOCATIONS

(1) Well locations for producing wells and/or injection wells which are unorthodox based on the well location requirements of Rule 104.C(1)(a) above and which are necessary to permit the completion of an efficient production and injection pattern within a secondary recovery, tertiary recovery, or pressure maintenance project are hereby authorized, provided that any such unorthodox location within such project is no closer than the required minimum orthodox distance to the outer boundary of the lease or the unitized area, nor closer than 10 feet to any quarter-quarter section line or subdivision inner boundary. Such locations shall only require such prior approval as is necessary for an orthodox location. [1-1-50...2-1-96]

BURLINGTON RESOURCES

MID-CONTINENT DIVISION

July 16 1998

Cotnergy Central Exploration, Inc.
1360 Post Oak Blvd., Suite 1500
Houston, Texas 77056

Penwell Energy, Inc.
600 N. Marienfeld, Suite 1100
Midland, Texas 79701

*-Certified Mail
No. 2137 527 387
Sent 7-16-98*

*Certified Mail
Z 137 527-386
Sent 7-16-98*

RE: Proposed Horizontal Well
Standard Surface Location
*Non-Standard Sub-Surface Bottom Hole Location
Due to Topographic Limitations

Burlington Resources Oil & Gas Company, OGRID #26485
Corral Draw 10 Federal #1
Corral Draw Wolfcamp Gas Pool, Pool Code 84330
Surf. Loc.: SE/4 SW/4, UL-N, 800' FSL & 1650' FWL
Section 9, T25S, R29E, Eddy County, New Mexico
Lse. #NM 15303

Ladies and Gentlemen:

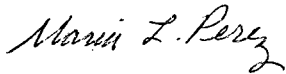
Burlington Resources Oil & Gas Company has made application with the oil conservation Commission in Santa Fe, New Mexico for administrative approval for a non-standard gas producing area/sub-surface bottom hole gas well location for the vertical portion of the wellbore for the proposed horizontal well, pursuant to Division General Rule 104.F and 111.C(2) to be applicable to the Corral Draw Wolfcamp (Gas) Pool for the Corral Draw 10 Federal #1, located at a standard surface location SE/4 SW/4, 800' FSL & 1650' FWL, (Unit N) of Section 10, T25S, R29E, Eddy County, New Mexico. The S/2 of said Section 10, being a standard 320-acre gas spacing and proration unit for this interval is to be dedicated to said well.

Burlington's request for an unorthodox subsurface bottom hole location of SE/4 SW/4, 800' FSL & 1500' FWL, (Unit N) of Section 10, T25S, R29E, Eddy Co., NM, that will allow for potential drilling bit drift to the west due to natural drift tendencies during normal vertical rotary drilling operations. Our options to move the surface location to the east are closed by topographical limitation (i. e. archeological sites. and an existing caliche hill which slopes on the northeast side of the proposed surface well location. Enclosed is the location plat for this proposed well showing the surface location, proposed kick-off point, wolfcamp penetration point and the proposed horizontal bottom hole location at UL-O, 800' FSL, 1650' FEL of said Section 10.

Page -2-

Any objection to this application must be filed in writing within twenty days from the date of this letter to Mr. Michael E. Stogner, Oil Conservation Division, 2040 South Pacheco Street, Santa Fe, New Mexico 87505-5472.

Sincerely,

A handwritten signature in cursive script, reading "Maria L. Perez".

**Maria L. Perez
Regulatory Representative
A/C 915-688-6906**

cc: Oil Conservation Division, Santa Fe, New Mexico

(s:mlp1:Corral Draw 10 Fed. #1 OSO)

DISTRICT I

P. O. Box 1980

Hobbs, NM 88241-1980

State of New Mexico
Energy, Minerals, and Natural Resources DepartmentForm C-102
Revised 02-10-94

Instructions on back

DISTRICT II

P. O. Drawer DD

Artesia, NM 88211-0719

OIL CONSERVATION DIVISION

P. O. Box 2088

Santa Fe, New Mexico 87504-2088

Submit to the Appropriate
District Office
State Lease - 4 copies
Fee Lease - 3 copies☐ AMENDED REPORT

DISTRICT III

1000 Rio Brazos Rd.

Aztec, NM 87410

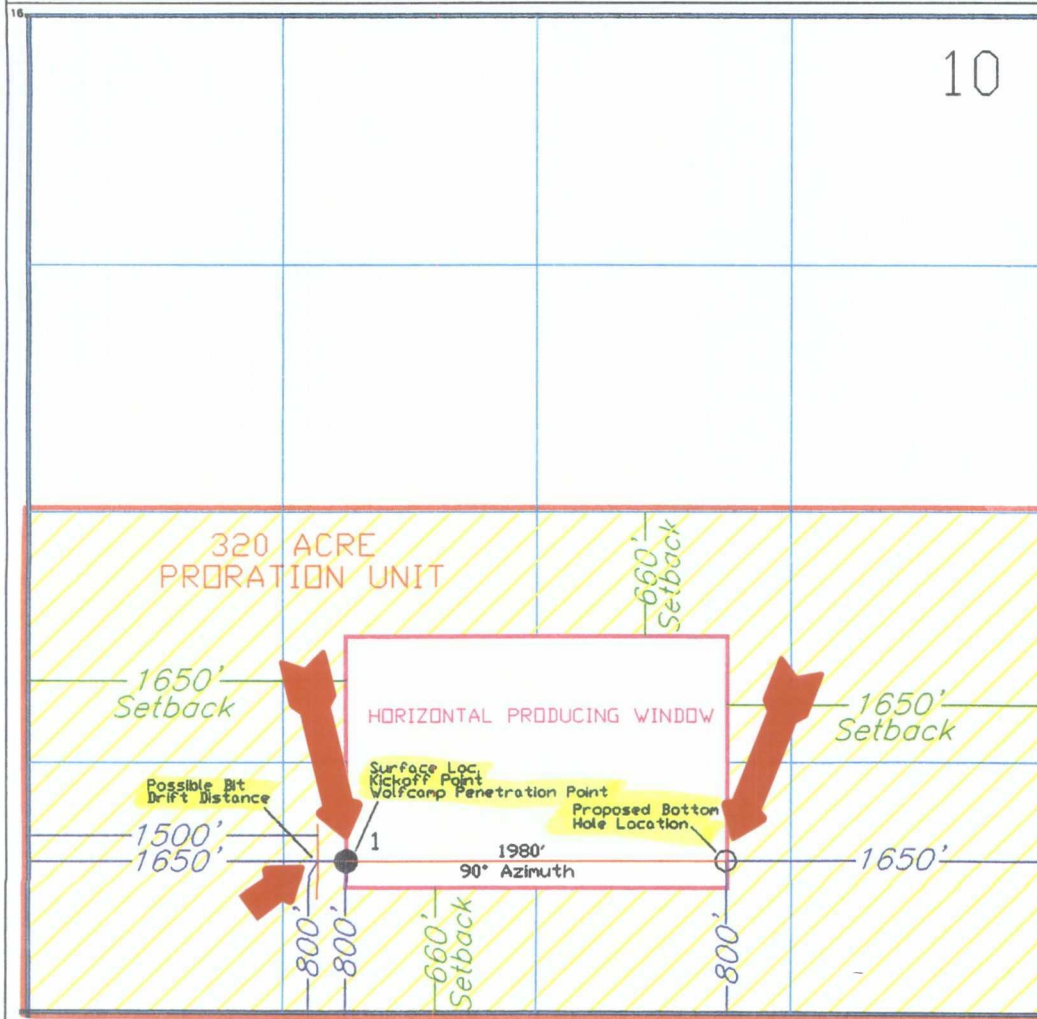
DISTRICT IV

P. O. Box 2088

Santa Fe, NM 87507-2088

WELL LOCATION AND ACREAGE DEDICATION PLAT

1 API Number		2 Pool Code 84330		3 Pool Name Corral Draw Wolfcamp					
4 Property Code		5 Property Name Corral Draw 10 Federal						6 Well Number 1	
7 OGRID No. 26485		8 Operator Name BURLINGTON RESOURCES OIL & GAS COMPANY						9 Elevation 3031'	
10 SURFACE LOCATION									
UL or lot no. N	Section 10	Township 25 SOUTH	Range 29 EAST, N.M.P.M.	Lot Ida	Feet from the 800'	North/South line SOUTH	Feet from the 1650'	East/West line WEST	County EDDY
11 BOTTOM HOLE LOCATION IF DIFFERENT FROM SURFACE									
UL or lot no. 0	Section 10	Township 25S	Range 29E	Lot Ida	Feet from the 800	North/South line South	Feet from the 1650	East/West line East	County Eddy
12 Dedicated Acres 320		13 Joint or Infill		14 Consolidation Code		15 Order No.			

NO ALLOWABLE WELL BE ASSIGNED TO THIS COMPLETION UNTIL ALL INTERESTS HAVE BEEN
CONSOLIDATED OR A NON-STANDARD UNIT HAS BEEN APPROVED BY THE DIVISION

OPERATOR CERTIFICATION

I hereby certify that the information
contained herein is true and complete
to the best of my knowledge and belief.

Signature

Printed Name

Maria L. Perez

Title

Regulatory Representative

Date

5-13-98

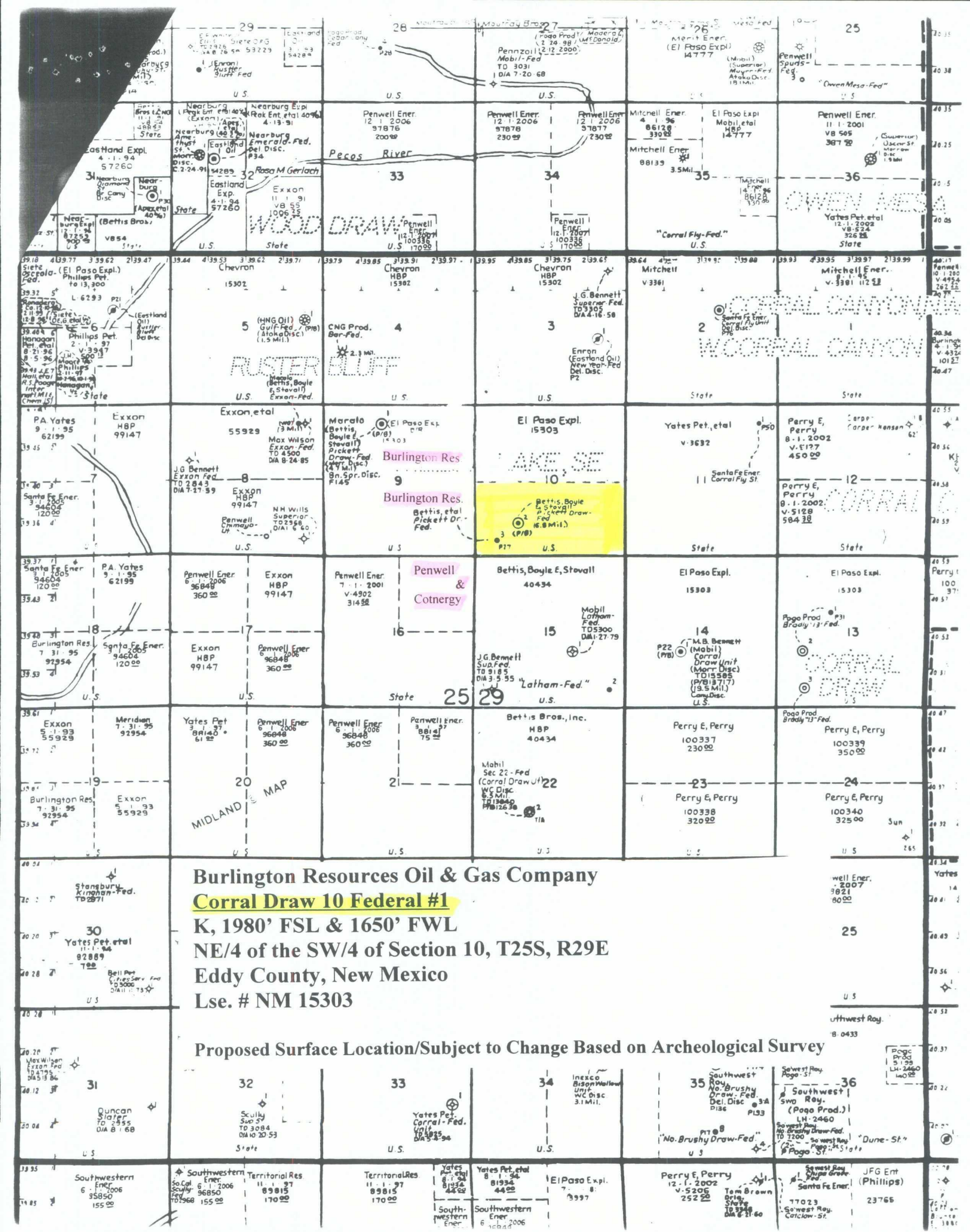
SURVEYOR CERTIFICATION

I hereby certify that the well
location shown on this plat was
plotted from field notes of actual
surveys made by me or under
my supervision, and that the
same is true and correct to the
best of my belief.

Date of Survey

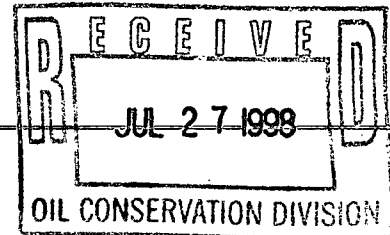
JANUARY 28, 1998

Signature and Seal of
Professional Surveyor
Certificate No.
ROGER M. ROBBINS P.S. #12128
JOB #56459 / 23NW / V.H.B.



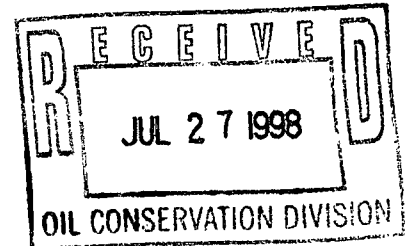
**BURLINGTON
RESOURCES**

MID-CONTINENT DIVISION



July 23, 1998

Mr. Michael E. Stogner
Chief Hearing Examiner/Engineer
State of New Mexico
Energy, Minerals and Natural Resources Dept.
Oil Conservation Division
2040 South Pacheco
P. O. Box 6429
Santa Fe, New Mexico 87505-5472



RE: Proof of Affected Offset Notification
for a Non-Standard Sub-Surface gas producing area
Bottom Hole Location
Burlington Resources Oil & Gas Co.
Corral Draw 10 Federal #1
Surface Loc. UL-N, 800' FSL & 1650' FWL
Section 10, T25S, R29E
Lea County, New Mexico
Lse. #NM 15303

Dear Mr. Stogner:

Enclosed are copies of the signed certified return receipts from the affected offsets as proof of notification of our Non-Standard Sub-Surface Bottom Hole Location.

Sincerely,

A handwritten signature in cursive script that reads "Maria L. Perez".

Maria L. Perez
Regulatory Representative
A/C 915-688-6906

SENDER: <input type="checkbox"/> Complete items 1 and/or 2 for additional services. <input type="checkbox"/> Complete items 3, 4a, and 4b. <input type="checkbox"/> Print your name and address on the reverse of this form so that we can return this card to you. <input type="checkbox"/> Attach this form to the front of the mailpiece, or on the back if space does not permit. <input type="checkbox"/> Write "Return Receipt Requested" on the mailpiece below the article number. <input type="checkbox"/> The Return Receipt will show to whom the article was delivered and the date delivered.		I also wish to receive the following services (for an extra fee): 1. <input type="checkbox"/> Addressee's Address 2. <input type="checkbox"/> Restricted Delivery Consult postmaster for fee.
3. Article Addressed to: Penwell Energy, Inc. 600 N. Marienfeld, Suite 1100 Midland, Texas 79701	4a. Article Number Z 137 527 386	Thank you for using Return Receipt Service.
	4b. Service Type <input type="checkbox"/> Registered <input type="checkbox"/> Certified <input type="checkbox"/> Express Mail <input type="checkbox"/> Insured <input type="checkbox"/> Return Receipt for Merchandise <input type="checkbox"/> COD	
	7. Date of Delivery 7-17-98	
5. Received By: (Print Name) Jennifer Ellis	8. Addressee's Address (Only if requested and fee is paid)	
6. Signature: (Addressee or Agent) X Jennifer Ellis		
PS Form 3811 , December 1994		102595-97-B-0179 Domestic Return Receipt

SENDER: <input type="checkbox"/> Complete items 1 and/or 2 for additional services. <input type="checkbox"/> Complete items 3, 4a, and 4b. <input type="checkbox"/> Print your name and address on the reverse of this form so that we can return this card to you. <input type="checkbox"/> Attach this form to the front of the mailpiece, or on the back if space does not permit. <input type="checkbox"/> Write "Return Receipt Requested" on the mailpiece below the article number. <input type="checkbox"/> The Return Receipt will show to whom the article was delivered and the date delivered.		I also wish to receive the following services (for an extra fee): 1. <input type="checkbox"/> Addressee's Address 2. <input type="checkbox"/> Restricted Delivery Consult postmaster for fee.
3. Article Addressed to: Cotnergy Central Exploration, Inc. 1360 Post Oak Blvd., Suite 1500 Houston, Texas 77056	4a. Article Number Z 137 527 387	Thank you for using Return Receipt Service.
	4b. Service Type <input type="checkbox"/> Registered <input checked="" type="checkbox"/> Certified <input type="checkbox"/> Express Mail <input type="checkbox"/> Insured <input type="checkbox"/> Return Receipt for Merchandise <input type="checkbox"/> COD	
	7. Date of Delivery JUL 2 1998	
5. Received By: (Print Name) Sarah Moore	8. Addressee's Address (Only if requested and fee is paid)	
6. Signature: (Addressee or Agent) X Sarah Moore		
PS Form 3811 , December 1994		102595-97-B-0179 Domestic Return Receipt

7-27-98

TO: Mr. Michael E. Stogner
Oil Conservation Division
Santa Fe, New Mexico
FAX #505-827-1389

FR: Maria L. Perez
Burlington Resources Oil & Gas Company
Midland, Texas
Tel. No. 915-688-6906
Fax No. 915-688-6007

RE: Request for Hearing
Corral Draw 10 Federal #1
Surf. Loc.: SE/4 SW/4, UL-N, Sec. 10, T25S, R29E
Eddy County, New Mexico
Lse. #NM 15303

Mike,

This is the well I was talking to you about this morning where Penwell Energy, Inc. call us and said they had no objection to our sub-surface unorthodox vertical bottom hole location application. However, in exchange for them having no objection, they wanted us to provide all the well information to them when ever this well was drilled and completed.

We are planning to call Penwell back to tell them they cannot have the well information. Because we have a deadline date to meet to spud this well and not knowing if Penwell will protest or not, please place this proposed new drill location on the Hearing Docket for the first available date in August.

If we do not get a protest from Penwell, we will cancel the hearing docket date.

Muchas gracias,