

GW - 325

INSPECTION

(Drain-lines, Sump, BGT, Site, etc.)

Lowe, Leonard, EMNRD

From: Lowe, Leonard, EMNRD
Sent: Thursday, July 30, 2009 1:26 PM
To: 'Friend, George'
Subject: RE: GW-325 Gallup Sump Inspection

George,

A few questions:

What are your procedures for inspecting these BGT's?

Are they cleaned out and hydrostatically tested?

When was the last such inspection?

All the below-grade tanks indicate that they, "don't contain liquids indefinitely" and yet the photos show fluids/sludge at the bottom.

The pig receiver BGT's all indicate that they do not have a secondary containment with leak detection. When does TWP intend to re-engineer them to meet permit requirements? The discharge permit indicates that all below-grade tanks need to be retrofitted to meet a 'tank within a tank' design with leak detection before permit is renewed. This permit GW-325.

The photo of the TANK identified as Pig Receiver Sump 2 shows a hole in the side walls. Is this the inlet for fluids being discharged in to this tank?

Please identify all documentations with their assigned GW numbers (if they have one) when submitting to the OCD.

llowe

Leonard Lowe

Environmental Engineer
Oil Conservation Division/EMNRD
1220 S. St. Francis Drive
Santa Fe, N.M. 87505
Office: 505-476-3492
Fax: 505-476-3462
E-mail: leonard.lowe@state.nm.us
Website: <http://www.emnrd.state.nm.us/oed/>

From: Friend, George [<mailto:George.Friend@energytransfer.com>]
Sent: Thursday, July 30, 2009 12:25 PM
To: Lowe, Leonard, EMNRD
Cc: Troncoso, Patrick (Pat); Kapka, Jimmy (Jim); Whippo, Jeffrey (Jeff)
Subject: Gallup Sump Inspection

Leonard

The annual sump inspection for the Gallup Compressor station was conducted on 7/27/09 by Pat Troncoso of Transwestern Pipeline. There were no problems found during the inspection. Photos of the sumps are attached.

George Friend
Division Environmental Specialist
Office (505) 260-4013
Cell (505) 228-8398

This inbound email has been scanned by the MessageLabs Email Security System.

OILY WASTE WATER SUMP 1



2009 Gallup Station Oily Waste Water Sump by Engine Room

This is a fiberglass sump with auto dump controls

Swaby MFG Co.

SN-B2001—size 1A-8ft. 8 inch X 24 inch—Fig 1910XA

Northwest side of the Engine Room

Contains oily waste water from engine Room and doesn't contain liquids indefinitely?

This tank does have secondary containment and is visually checked

Inspection done on July 30th 2009 by Patrick Troncoso and Julian Ruiz

No problems were found



2009 Gallup Station Oily Waste Water Sump by Engine Room

This is a fiberglass sump with auto dump controls

Swaby MFG Co.

SN-B2001—size 1A-8ft. 8 inch X 24 inch—Fig 1910XA

Northwest side of the Engine Room

Contains oily waste water from engine Room and doesn't contain liquids indefinitely

This tank does have secondary containment and is visually checked

Inspection done on July 30th 2009 by Patrick Troncoso and Julian Ruiz

No problems were found

ATTACHMENT

OILY WASTE WATER SUMP #3



2009 Gallup Station Oily Waste Water Sump by Engine Room

This is a fiberglass sump with auto dump controls

Swaby MFG Co.

SN-B2001—size 1A-8ft. 8 inch X 24 inch—Fig 1910XA

Northwest side of the Engine Room

Contains oily waste water from engine Room and doesn't contain liquids indefinitely

This tank does have secondary containment and is visually checked

Inspection done on July 30th 2009 by Patrick Troncoso and Julian Ruiz

No problems were found

ATTACHMENT

PIG RECEIVER SUMP #1



2009 Gallup Station Pig Receiver Sump
This is a metal sump with manual controls
No manufacture info (homemade)

Next to San Juan Lateral 30" pig receiver north of the Station
Contains pipeline condensate from 30" & 36" pipelines, and doesn't contain liquids
indefinitely--- Size 4ft 6 inches X 36 inches

This tank does not have secondary containment and is visually checked
Inspection was done on July 30th 2009 by Patrick Troncoso and Julian Ruiz
No problems were found

ATTACHMENT

PIG RECEIVER SUMP #2



2009 Gallup Station Pig Receiver Sump

This is a metal sump with manual controls

No manufacture info (homemade)

Next to San Juan Lateral 30" pig receiver north of the Station

Contains pipeline condensate from 30" & 36" pipelines, and doesn't contain liquids indefinitely--- Size 4ft 6 inches X 36 inches

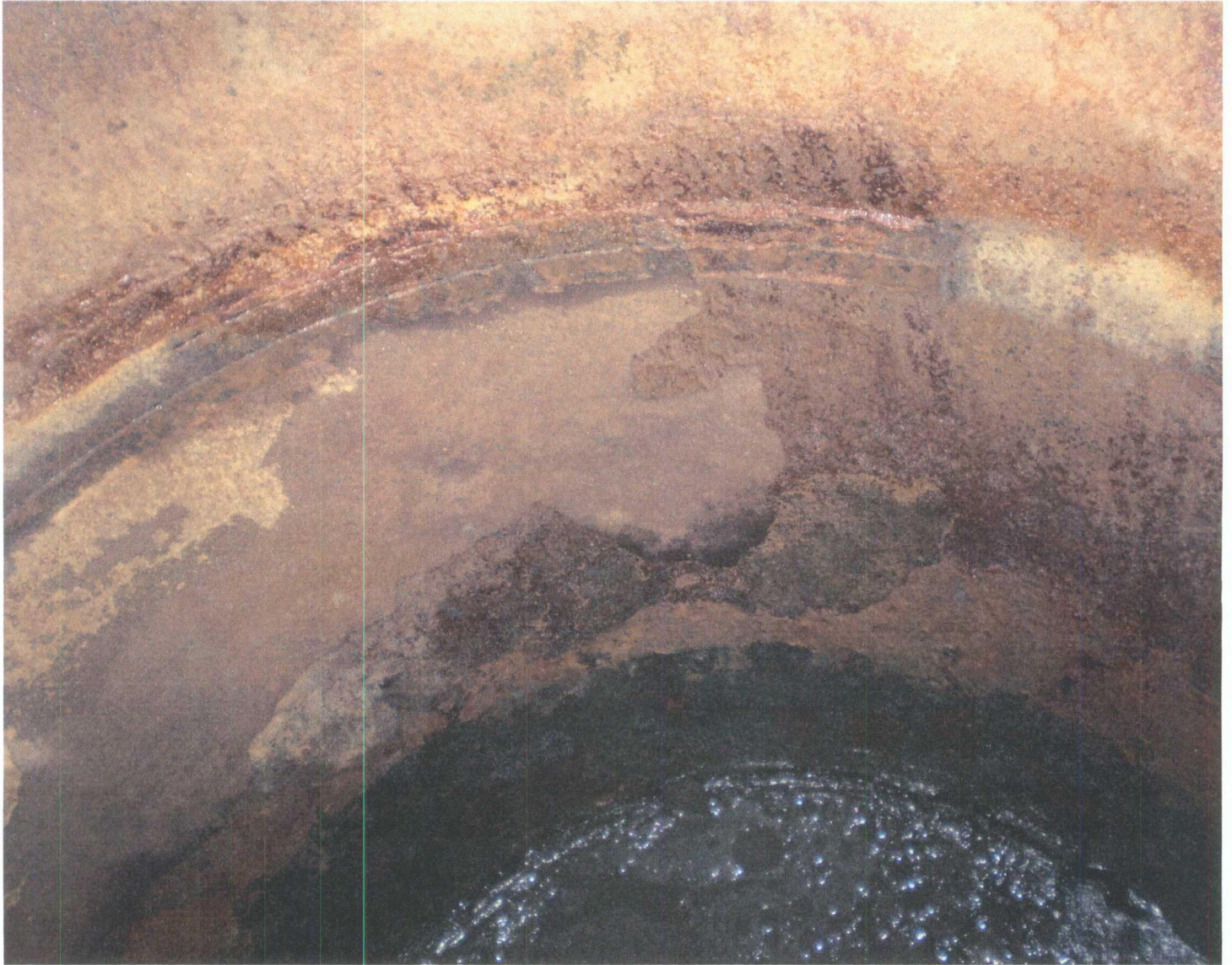
This tank does not have secondary containment and is visually checked ✓

Inspection was done on July 30th 2009 by Patrick Troncoso and Julian Ruiz

No problems were found

ATTACHMENT

PIGRECEIVER SUMP #3



2009 Gallup Station Pig Receiver Sump

This is a metal sump with manual controls

No manufacture info (homemade)

Next to San Juan Lateral 30" pig receiver north of the Station

Contains pipeline condensate from 30" & 36" pipelines, and doesn't contain liquids indefinitely--- Size 4ft 6 inches X 36 inches

This tank does not have secondary containment and is visually checked

Inspection was done on July 30th 2009 by Patrick Troncoso and Julian Ruiz

No problems were found