

| | | | | | |
|------------------------|----------|--------------------|--------------------------|-----------------|--------------------------------|
| DATE IN 7/27/09 | SUSPENSE | ENGINEER RE | LOGGED IN 7/27/09 | TYPE CTB | APP NO. PTG-W0920856/81 |
|------------------------|----------|--------------------|--------------------------|-----------------|--------------------------------|

ABOVE THIS LINE FOR DIVISION USE ONLY

NEW MEXICO OIL CONSERVATION DIVISION
 - Engineering Bureau -
 1220 South St. Francis Drive, Santa Fe, NM 87505



*5 wells
3 leases
2 CTB's*

ADMINISTRATIVE APPLICATION CHECKLIST

THIS CHECKLIST IS MANDATORY FOR ALL ADMINISTRATIVE APPLICATIONS FOR EXCEPTIONS TO DIVISION RULES AND REGULATIONS WHICH REQUIRE PROCESSING AT THE DIVISION LEVEL IN SANTA FE

Application Acronyms:

[NSL-Non-Standard Location] [NSP-Non-Standard Proration Unit] [SD-Simultaneous Dedication]
[DHC-Downhole Commingling] [CTB-Lease Commingling] [PLC-Pool/Lease Commingling]
[PC-Pool Commingling] [OLS - Off-Lease Storage] [OLM-Off-Lease Measurement]
[WFX-Waterflood Expansion] [PMX-Pressure Maintenance Expansion]
[SWD-Salt Water Disposal] [IPI-Injection Pressure Increase]
[EOR-Qualified Enhanced Oil Recovery Certification] [PPR-Positive Production Response]

- [1] **TYPE OF APPLICATION** - Check Those Which Apply for [A]
- [A] Location - Spacing Unit - Simultaneous Dedication
☐ NSL ☐ NSP ☐ SD
- Check One Only for [B] or [C]
- [B] Commingling - Storage - Measurement
☐ DHC ☒ CTB ☐ PLC ☐ PC ☐ OLS ☒ OLM
- [C] Injection - Disposal - Pressure Increase - Enhanced Oil Recovery
☐ WFX ☐ PMX ☐ SWD ☐ IPI ☐ EOR ☐ PPR
- [D] Other: Specify _____

2009 JUL 27 A 9:43
RECEIVED OCD

- [2] **NOTIFICATION REQUIRED TO:** - Check Those Which Apply, or ☐ Does Not Apply
- [A] ☒ Working, Royalty or Overriding Royalty Interest Owners
- [B] ☒ Offset Operators, Leaseholders or Surface Owner
- [C] ☐ Application is One Which Requires Published Legal Notice
- [D] ☒ Notification and/or Concurrent Approval by BLM or SLO
U.S. Bureau of Land Management - Commissioner of Public Lands, State Land Office
- [E] ☐ For all of the above, Proof of Notification or Publication is Attached, and/or,
- [F] ☐ Waivers are Attached

CTB-603

- [3] **SUBMIT ACCURATE AND COMPLETE INFORMATION REQUIRED TO PROCESS THE TYPE OF APPLICATION INDICATED ABOVE.**

- [4] **CERTIFICATION:** I hereby certify that the information submitted with this application for administrative approval is **accurate** and **complete** to the best of my knowledge. I also understand that **no action** will be taken on this application until the required information and notifications are submitted to the Division.

Note: Statement must be completed by an individual with managerial and/or supervisory capacity.

Jennifer Zapata
 Print or Type Name

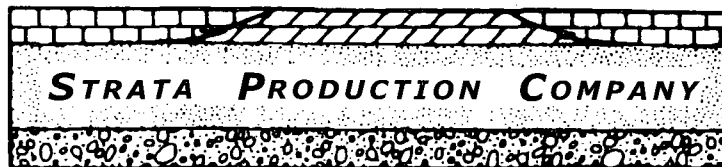
Signature

Production Analyst
 Title

07/023/09
 Date

jzapata@stratanm.com
 e-mail Address

POST OFFICE DRAWER 1030
ROSWELL, NM 88202-1030



TELEPHONE (575) 622-1127
FACSIMILE (575) 623-3533

1301 NORTH SYCAMORE AVENUE
ROSWELL, NEW MEXICO 88201
www.stratanm.com

July 23, 2009

New Mexico Oil Conservation Division
1220 South St. Francis Drive
Santa Fe, NM 87505

RE: Request for Surface Commingling
Diamondtail
23S-32E, NMPM
Lea County, New Mexico

Ladies and Gentlemen:

Strata Production Company respectfully requests OCD approval for surface commingling and off lease gas sales. Central sales location for gas is located at the Urraca Fed #1 Battery in N-11-23S-32E, 660' FSL & 1980' FWL.
Surface Commingling will include:

| LEASE NAME | API NUMBER | LOCATION | FOOTAGE |
|--------------------|--------------|--------------|-----------------------|
| Urraca Federal #2 | 30-025-31625 | M-11-23S-32E | 560' FSL & 660' FWL |
| Urraca Federal #3 | 30-025-37687 | L-11-23S-32E | 1980' FSL & 660' FWL |
| Cuervo Federal #2 | 30-025-31434 | C-14-23S-32E | 460' FNL & 1650' FWL |
| Cuervo Federal #3 | 30-025-38680 | F-14-23S-32E | 1980' FNL & 1650' FWL |
| Colibri Federal #1 | 30-025-31968 | P-10-23S-32E | 990' FSL & 330' FEL |

The Urraca Federal #2 and #3 produce to a central battery for that lease. Production is separated in a 4'X20' Heater Treater which meter's water production and is gauged for oil production. Gas sales flow through a gas meter loop before entering the main sales point located on the Urraca Federal #1 location. Both wells produce from the Delaware formation. The Cuervo Federal #2 and #3 produces to a central battery for that lease located on the Cuervo Federal #2 location. Production is separated in a 4'X20' Heater Treater which meters water production and gauged for oil production. Gas sales flow through a gas meter loop before entering the main sales point located on the Urraca Federal #1 location. Both wells produce from the Delaware formation. Each well is tested monthly to accurately allocate production. Gas meters are calibrated monthly for each location. Gas is sold through the DCP main line located on the Urraca Federal #1 Battery. The Colibri Federal #1 produces an average of 3 BOPD, 80 BWPD w/ gas production to small to measure. However, there is potential up hole in several Delaware pay zones.


* No gas production from this well *

Has been plugged and abandoned

2009 JUL 27 A
RECEIVED OCD

Strata Production has future plans to drill prospective locations on the Urraca Federal and Cuervo Federal leases. Enclosed is a lease map which indicates present locations and pipeline routes.

Sincerely,

A handwritten signature in black ink, appearing to read "Frank S. Morgan", with a long, sweeping horizontal line extending to the right.

Frank S. Morgan
Vice President

District I
1625 N. French Drive, Hobbs, NM 88240
District II
1301 W. Grand Ave, Artesia, NM 88210
District III
1000 Rio Brazos Road, Aztec, NM 87410
District IV
1220 S. St Francis Dr, Santa Fe, NM
87505

State of New Mexico
Energy, Minerals and Natural Resources Department

Form C-107-B
Revised June 10, 2003

OIL CONSERVATION DIVISION
1220 S. St Francis Drive
Santa Fe, New Mexico 87505

Submit the original
application to the Santa Fe
office with one copy to the
appropriate District Office.

APPLICATION FOR SURFACE COMMINGLING (DIVERSE OWNERSHIP)

OPERATOR NAME: Strata Production Company

OPERATOR ADDRESS: PO Box 1030, Roswell, NM 88202-1030

APPLICATION TYPE:

☐ Pool Commingling ☒ Lease Commingling ☐ Pool and Lease Commingling ☒ Off-Lease Storage and Measurement (Only if not Surface Commingled)

LEASE TYPE: ☐ Fee ☐ State ☒ Federal

Is this an Amendment to existing Order? ☐ Yes ☒ No If "Yes", please include the appropriate Order No. _____

Have the Bureau of Land Management (BLM) and State Land office (SLO) been notified in writing of the proposed commingling

☒ Yes ☐ No

(A) POOL COMMINGLING

Please attach sheets with the following information

| (1) Pool Names and Codes | Gravities / BTU of Non-Commingled Production | Calculated Gravities / BTU of Commingled Production | | Calculated Value of Commingled Production | Volumes |
|--------------------------|--|---|--|---|---------|
| | | | | | |
| | | | | | |
| | | | | | |
| | | | | | |
| | | | | | |

(2) Are any wells producing at top allowables? ☐ Yes ☐ No

(3) Has all interest owners been notified by certified mail of the proposed commingling? ☐ Yes ☐ No.

(4) Measurement type: ☐ Metering ☐ Other (Specify)

(5) Will commingling decrease the value of production? ☐ Yes ☐ No If "yes", describe why commingling should be approved

(B) LEASE COMMINGLING

Please attach sheets with the following information

(1) Pool Name and Code. Diamondtail Delaware

(2) Is all production from same source of supply? ☒ Yes ☐ No

(3) Has all interest owners been notified by certified mail of the proposed commingling? ☒ Yes ☐ No

(4) Measurement type: ☒ Metering ☐ Other (Specify)

(C) POOL and LEASE COMMINGLING

Please attach sheets with the following information

(1) Complete Sections A and E.

(D) OFF-LEASE STORAGE and MEASUREMENT

Please attached sheets with the following information

(1) Is all production from same source of supply? ☒ Yes ☐ No

(2) Include proof of notice to all interest owners.

(E) ADDITIONAL INFORMATION (for all application types)

Please attach sheets with the following information

(1) A schematic diagram of facility, including legal location.

(2) A plat with lease boundaries showing all well and facility locations. Include lease numbers if Federal or State lands are involved.

(3) Lease Names, Lease and Well Numbers, and API Numbers.

I hereby certify that the information above is true and complete to the best of my knowledge and belief.

SIGNATURE: Jennifer Zapata

TITLE: Production Analyst

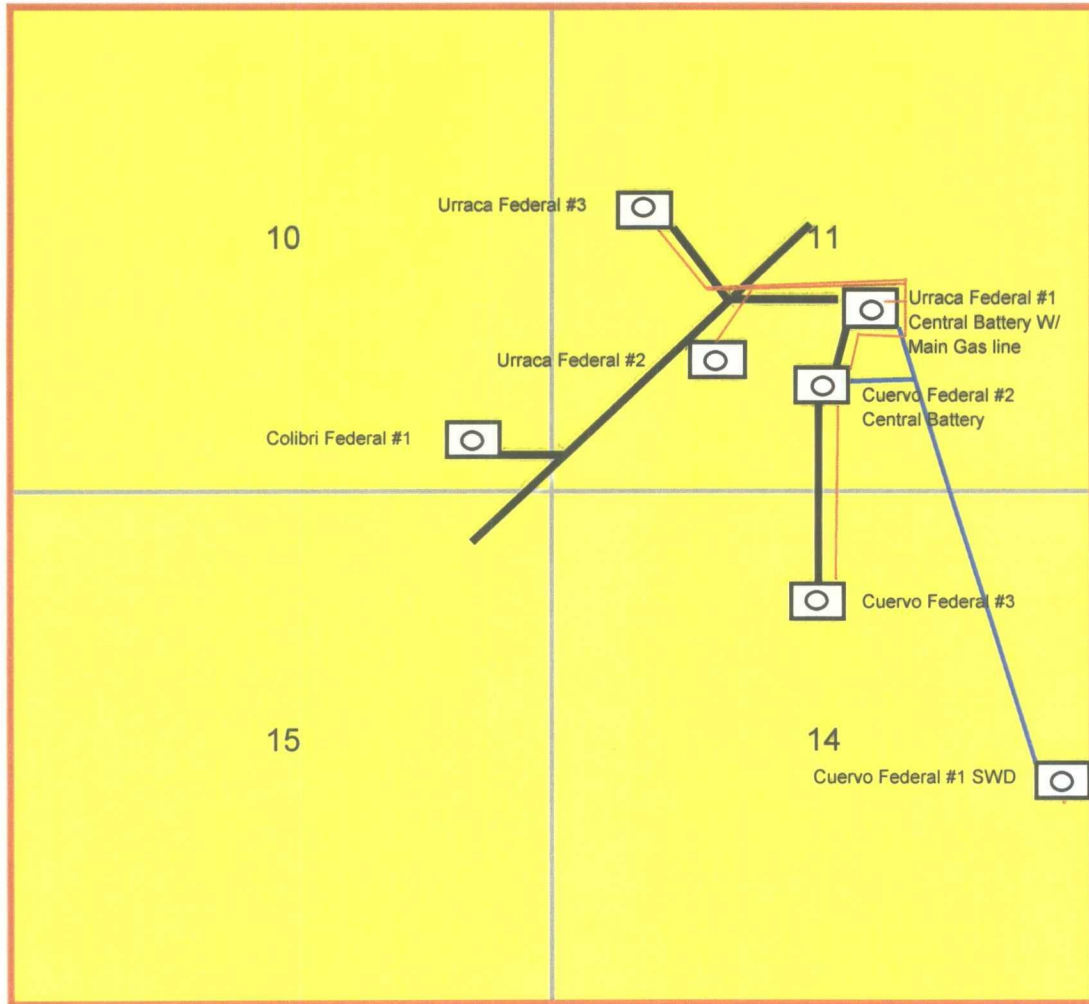
DATE: 7/23/09

TYPE OR PRINT NAME Jennifer Zapata

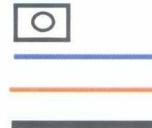
TELEPHONE NO.: (575) 622-1127

E-MAIL ADDRESS: jzapata@stratanm.com

Diamondtail Lease Map For Surface Commingling

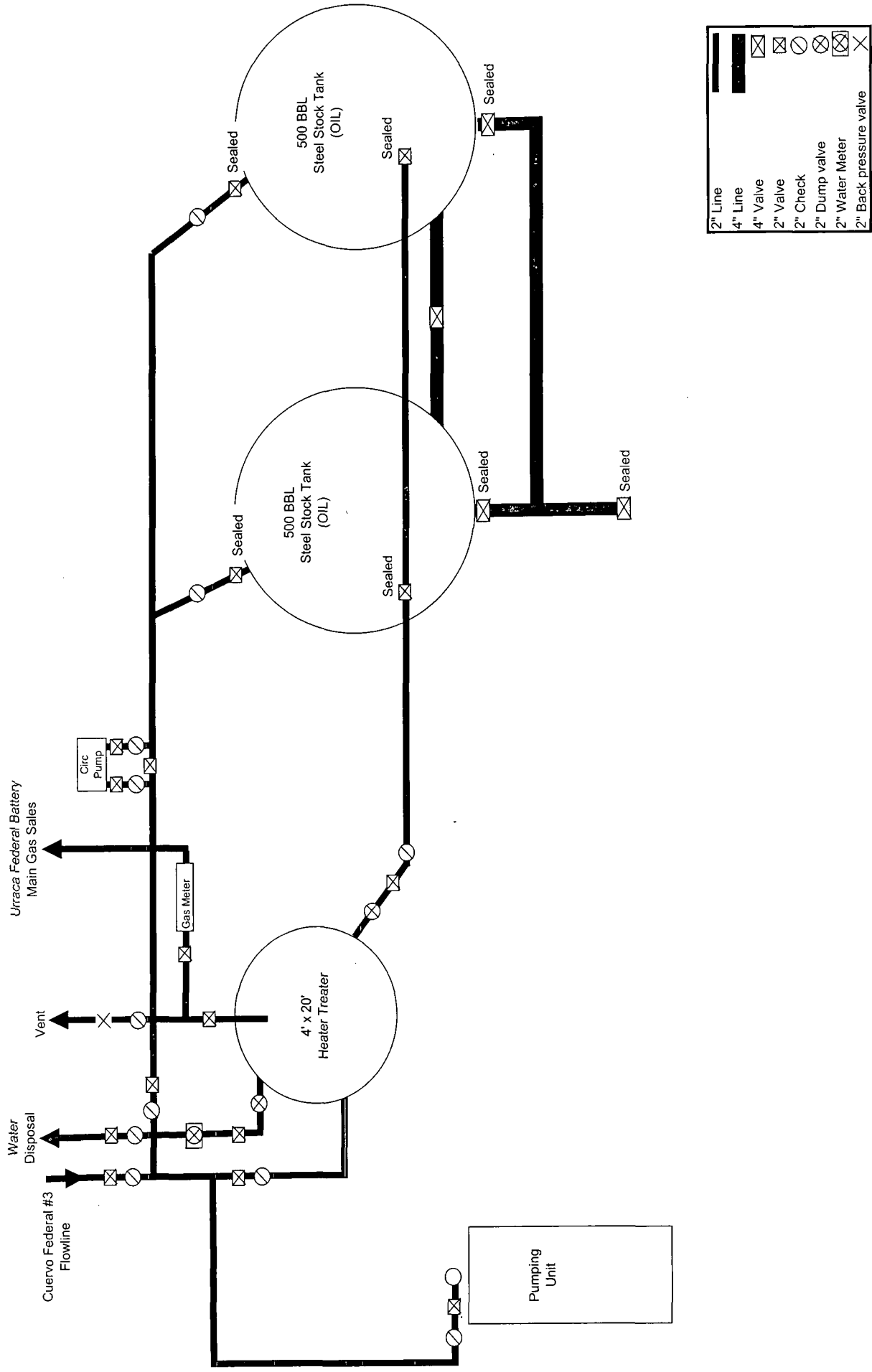


Well
Water Disposal Lines
Flow-line
Main Roads

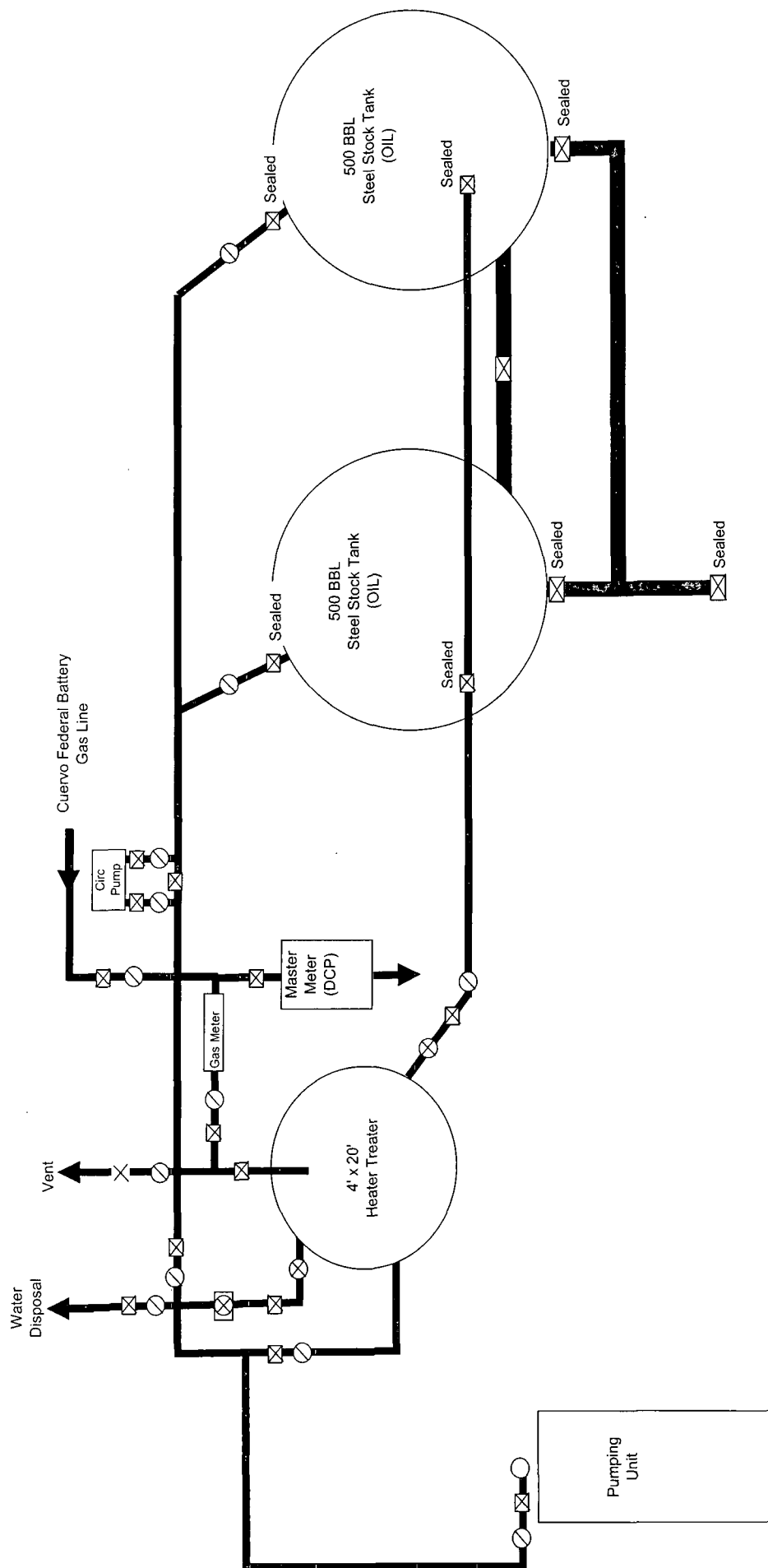


JK

Cuervo Federal #2 #3 Battery

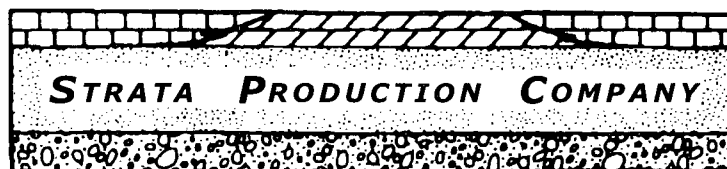


Urraca Federal Battery



| | |
|------------------------|--|
| 2" Line | |
| 4" Line | |
| 4" Valve | |
| 2" Valve | |
| 2" Check | |
| 2" Dump valve | |
| 2" Water Meter | |
| 2" Back pressure valve | |

POST OFFICE DRAWER 1030
ROSWELL, NM 88202-1030



1301 NORTH SYCAMORE AVENUE
ROSWELL, NEW MEXICO 88201
www.stratanm.com

TELEPHONE (575) 622-1127
FACSIMILE (575) 623-3533

owner's
Letter

July 23, 2009

Name
Address
City, State Zip

Re: Lease Commingling, Off-Lease Measurement and Sales on the following leases:
Urraca Federal #2, Urraca Federal #3, Cuervo Federal #2, and Cuervo Federal #3 all in Lea
County New Mexico.

Colibri Fed. #1?

To Whom It May Concern:

Strata Production Company is proposing to surface commingle the off-lease metering, measurement and sales of "gas" production from the leases above. All gas production will be commingled and allocated using periodic but not less than monthly well tests. As an interest owner in the subject wells, pursuant to NMOCD rules and regulations, you are required to provide your consent to the proposed commingling of production from these wells. I have attached Strata's application and enclosures that are to be filed with the NMOCD.

Please indicate your approval by signing in the space below and returning one copy of this letter to this office in the enclosed envelope. The second copy is for your files. If you have any objections to this request they must be filed with the Santa Fe district office located at: 1220 South St. Francis Drive, Santa Fe, NM 87505, within 20 days from the date the division received the application. Your prompt attention to this matter will be greatly appreciated.

Sincerely,

Jennifer Zapata
Production Analyst

Approved this _____ day of _____,

Submit to Appropriate
District Office
State Lease - 4 copies
Fee Lease - 3 copies

State of New Mexico
Energy, Minerals and Natural Resources Department

Form C-102
Revised 1-1-89

OIL CONSERVATION DIVISION

P.O. Box 2088
Santa Fe, New Mexico 87504-2088

DISTRICT I
P.O. Box 1980, Hobbs, NM 88240

DISTRICT II
P.O. Drawer DD, Artesia, NM 88210

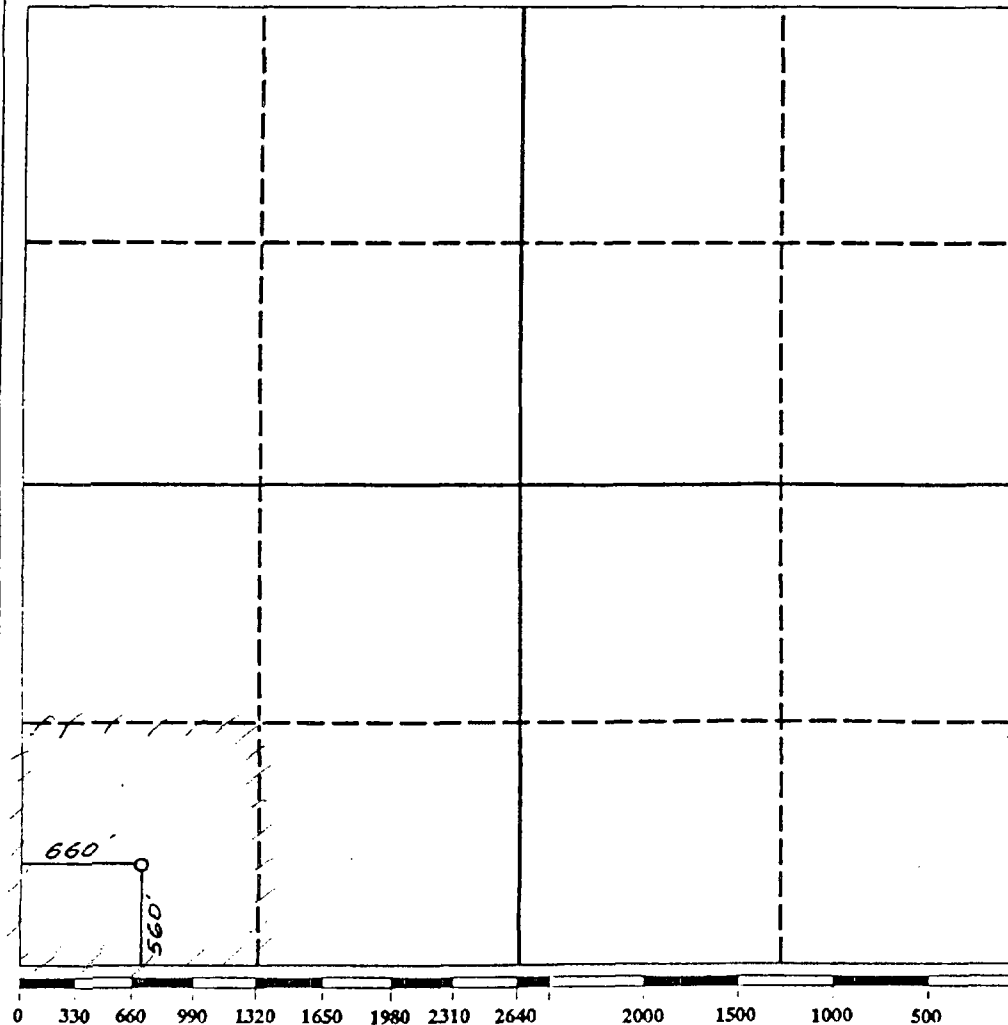
DISTRICT III
1000 Rio Brazos Rd., Aztec, NM 87410

WELL LOCATION AND ACREAGE DEDICATION PLAT

All Distances must be from the outer boundaries of the section

| | | | | | |
|--|--|-----------------------------|--------------------------------|---|----------------------|
| Operator STRATA PRODUCTION | | | Lease URRACA FEDERAL | | Well No. 2 |
| Unit Letter M | Section 11 | Township 23 SOUTH | Range 32 EAST | County LEA COUNTY, NM | |
| Actual Footage Location of Well: 560 feet from the SOUTH line and 660 feet from the WEST line | | | | | |
| Ground level Elev. 3720. | Producing Formation Delaware | | Pool Diamondtail | Dedicated Acreage: 40.0 Acres | |

- Outline the acreage dedicated to the subject well by colored pencil or hatchure marks on the plat below.
- If more than one lease is dedicated to the well, outline each and identify the ownership thereof (both as to working interest and royalty).
- If more than one lease of different ownership is dedicated to the well, have the interest of all owners been consolidated by communitization, unitization, force-pooling, etc.?
☐ Yes ☐ No If answer is "yes" type of consolidation _____
If answer is "no" list the owners and tract descriptions which have actually been consolidated. (Use reverse side of this form if necessary). _____
No allowable will be assigned to the well until all interests have been consolidated (by communitization, unitization, forced-pooling, or otherwise) or until a non-standard unit, eliminating such interest, has been approved by the Division.



OPERATOR CERTIFICATION

I hereby certify that the information contained herein is true and complete to the best of my knowledge and belief.

Signature
Regina Finley
Printed Name
Regina Finley
Position
Production Records/Land Mgr.
Company
Strata Production Company
Date
April 20, 1992

SURVEYOR CERTIFICATION

I hereby certify that the well location shown on this plat was plotted from field notes of actual surveys made by me or under my supervision, and that the same is true and correct to the best of my knowledge and belief.

Date Surveyed
APRIL 14, 1992
Signature
REDDY
Professional Surveyor
NEW MEXICO
5412
REGISTERED PROFESSIONAL ENGINEER
NEW MEXICO
RECEIVED
APR 22 1992

District I
1625 N. French Dr. Hobbs, NM 88240

District II
1301 W. Grand Avenue, Artesia, NM 88210

District III
1000 Rio Brazos Rd., Aztec NM 87410

District IV
1220 S. St. Francis Dr., Santa Fe, NM 87505

State of New Mexico
Energy, Minerals & Natural Resources Department

OIL CONSERVATION DIVISION

1220 South St. Francis Dr.

Santa Fe, NM 87505

Form C-102
Revised June 10, 2003
Submit to Appropriate District Office
State Lease - 4 Copies
Fee Lease - 3 Copies

☐ AMENDED REPORT

WELL LOCATION AND ACREAGE DEDICATION PLAT

| | | | | |
|---------------|-----------------------|-----------|-------------|--|
| API Number | | Pool Code | Pool Name | |
| Property Code | Property Name | | Well Number | |
| | URRACA FEDERAL | | 3 | |
| OGRID No. | Operation Name | | Elevation | |
| | STRATA PRODUCTION CO. | | 3729 | |

Surface Location

| | | | | | | | | | |
|---------------|---------|----------|-------|----------|---------------|------------------|---------------|----------------|--------|
| UL or Lot No. | Section | Township | Range | Lot Idn. | Feet from the | North/South line | Feet from the | East/West line | County |
| L | 11 | 23-S | 32-E | | 1980 | SOUTH | 660 | WEST | LEA |

Bottom Hole Location If Different From Surface

| | | | | | | | | | |
|-----------------|-----------------|--------------------|-----------|----------|---------------|------------------|---------------|----------------|--------|
| UL or Lot No. | Section | Township | Range | Lot Idn. | Feet from the | North/South line | Feet from the | East/West line | County |
| | | | | | | | | | |
| Dedicated Acres | Joint or Infill | Consolidation Code | Order No. | | | | | | |
| 40 | | | | | | | | | |

NO ALLOWABLE WILL BE ASSIGNED TO THIS COMPLETION UNTIL ALL INTEREST HAVE BEEN CONSOLIDATED OR A NON-STANDARD UNIT HAS BEEN APPROVED BY THE DIVISION

| | | | | |
|---|---|--|--|--|
| <p>LAT N32°19'02.6"</p> <p>LON W103°39'06.2"</p> <p>660'</p> <p>1980'</p> | OPERATOR CERTIFICATION | | | |
| | I HEREBY CERTIFY THAT THE INFORMATION CONTAINED HEREIN IS TRUE AND COMPLETE TO THE BEST OF MY KNOWLEDGE AND BELIEF. | | | |
| | Signature | | | |
| | Kelly M. Britt | | | |
| | Printed Name | | | |
| | Kelly M. Britt | | | |
| | Title and E-mail Address | | | |
| | Production Analyst | | | |
| | Date | | | |
| | July 1, 2005 | | | |
| | SURVEYOR CERTIFICATION | | | |
| | I HEREBY CERTIFY THAT THE WELL LOCATION SHOWN ON THIS PLAT WAS PLOTTED FROM FIELD NOTES OF ACTUAL SURVEYS MADE BY ME OR UNDER MY SUPERVISION, AND THAT THE SAME IS TRUE AND CORRECT TO THE BEST OF MY KNOWLEDGE AND BELIEF. | | | |
| | MAY 18, 2005 | | | |
| | Date of Survey | | | |
| | Signature and Seal of Professional Surveyor | | | |
| | <p>DAVID R. REDD NEW MEXICO 5412 REGISTERED PROFESSIONAL SURVEYOR NMOREPS PROFESSIONAL Certificate Number</p> | | | |

Submit to Appropriate
District Office
State Lease - 4 copies
Fee Lease - 3 copies

State of New Mexico
Energy, Minerals and Natural Resources Department

Form C-102
Revised 1-1-89

OIL CONSERVATION DIVISION

P.O. Box 2088
Santa Fe, New Mexico 87504-2088

DISTRICT I
P.O. Box 1980, Hobbs, NM 88240

DISTRICT II
P.O. Drawer DD, Artesia, NM 88210

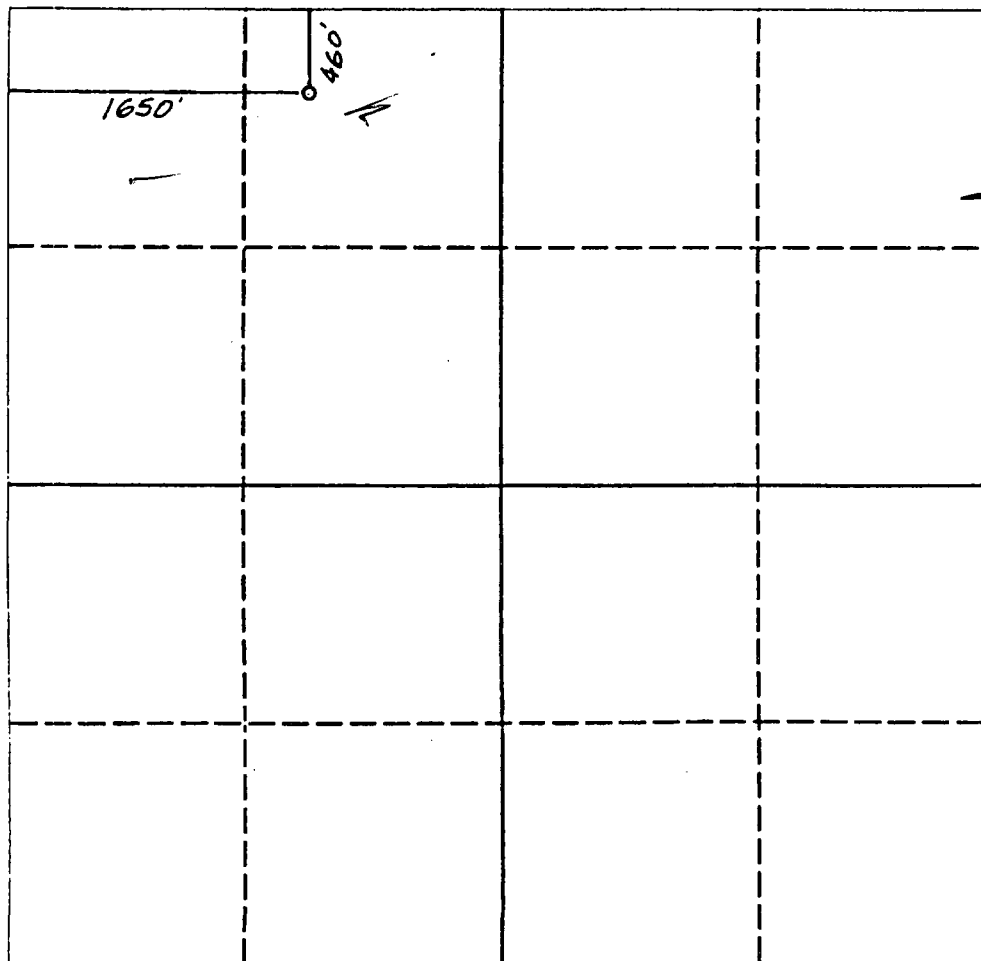
DISTRICT III
1000 Rio Brazos Rd., Aztec, NM 87410

WELL LOCATION AND ACREAGE DEDICATION PLAT

All Distances must be from the outer boundaries of the section

| | | | | | |
|---|--|-----------------------------|-------------------------------------|-----------------------------------|---------------------------------------|
| Operator STRATA PRODUCTION | | | Lease CUERVO FEDERAL | | Well No. 2 |
| Unit Letter C | Section 14 | Township 23 SOUTH | Range 32 EAST | County LEA COUNTY, N.M. | |
| Actual Footage Location of Well: 460 feet from the NORTH line and 1650 feet from the WEST line | | | | | |
| Ground level Elev. 3720. | Producing Formation Delaware | | Pool Diamondtail Delaware | | Dedicated Acreage: 40 Acres |

- Outline the acreage dedicated to the subject well by colored pencil or hatchure marks on the plat below.
- If more than one lease is dedicated to the well, outline each and identify the ownership thereof (both as to working interest and royalty).
- If more than one lease of different ownership is dedicated to the well, have the interest of all owners been consolidated by communitization, unitization, force-pooling, etc.?
☐ Yes ☐ No If answer is "yes" type of consolidation _____
If answer is "no" list the owners and tract descriptions which have actually been consolidated. (Use reverse side of this form if necessary). _____
No allowable will be assigned to the well until all interests have been consolidated (by communitization, unitization, forced-pooling, or otherwise) or until a non-standard unit, eliminating such interest, has been approved by the Division.



OPERATOR CERTIFICATION

I hereby certify that the information contained herein is true and complete to the best of my knowledge and belief.

Signature
James G. McClelland
Printed Name
James G. McClelland
Position
Vice President
Company
Strata Production Company
Date
09/27/91

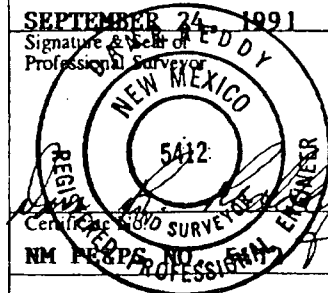
SURVEYOR CERTIFICATION

I hereby certify that the well location shown on this plat was plotted from field notes of actual surveys made by me or under my supervision, and that the same is true and correct to the best of my knowledge and belief.

Date Surveyed

SEPTEMBER 24, 1991

Signature & Seal of
Professional Surveyor



0 330 660 990 1320 1650 1980 2310 2640 2000 1500 1000 500 0

District I

1625 N. French Dr., Hobbs, NM 88240

District II

1301 W. Grand Avenue, Artesia, NM 88210

District III

1000 Rio Brazos Rd., Aztec, NM 87410

District IV

1220 S. St. Francis Dr., Santa Fe, NM 87505

State of New Mexico

Energy, Minerals & Natural Resources Department

Form C-102

Revised October 12, 2005

Submit to Appropriate District Office

State Lease - 4 Copies

Fee Lease - 3 Copies

OIL CONSERVATION DIVISION

1220 South St. Francis Dr.

Santa Fe, NM 87505

☐ AMENDED REPORT

WELL LOCATION AND ACREAGE DEDICATION PLAT

| | | |
|-----------------|--|---------------------|
| 1 API Number | 2 Pool Code | 3 Pool Name |
| 4 Property Code | 5 Property Name CUERVO FEDERAL | 6 Well Number 3 |
| 7 OGRID No. | 8 Operator Name STRATA PRODUCTION COMPANY | 9 Elevation 3709 |

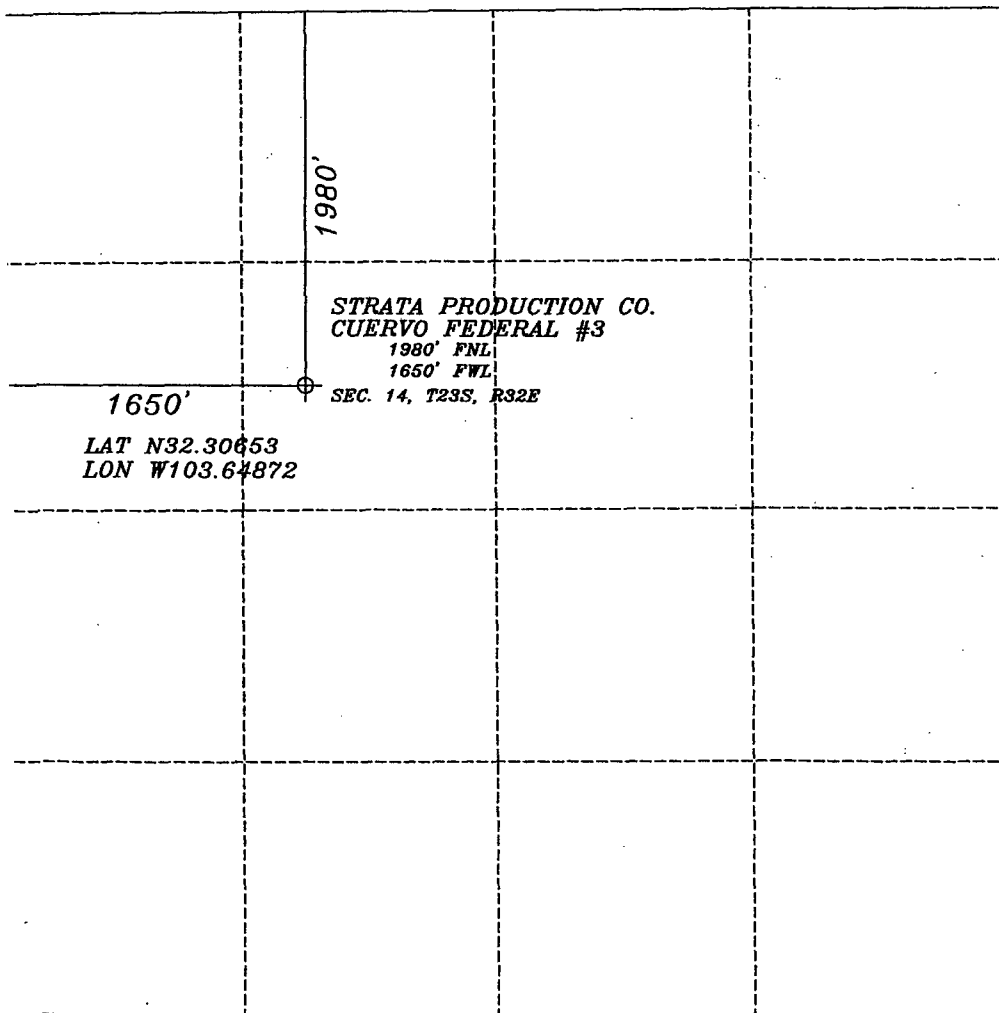
10 Surface Location

| | | | | | | | | | |
|---------------|---------|----------|-------|----------|---------------|------------------|---------------|----------------|--------|
| UL or lot no. | Section | Township | Range | Lot Idn. | Feet from the | North/South line | Feet from the | East/West line | County |
| F | 14 | 23-S | 32-E | | 1980 | NORTH | 1650 | WEST | LEA |

11 Bottom Hole Location If Different From Surface

| | | | | | | | | | |
|--------------------|--------------------|-----------------------|--------------|----------|---------------|------------------|---------------|----------------|--------|
| UL or lot no. | Section | Township | Range | Lot Idn. | Feet from the | North/South line | Feet from the | East/West line | County |
| | | | | | | | | | |
| 12 Dedicated Acres | 13 Joint or Infill | 14 Consolidation Code | 15 Order No. | | | | | | |

No allowable will be assigned to this completion until all interests have been consolidated or a non-standard unit has been approved by the division.



17 OPERATORS CERTIFICATION

I hereby certify that the information contained herein is true and complete to the best of my knowledge and belief, and that this organization either owns a working interest or unleased mineral interest in the land including the proposed bottom hole location or has a right to drill this well at this location pursuant to a contract with an owner of such mineral or working interest, or to voluntary pooling agreement or a compulsory pooling order heretofore entered by the division.

Signature

Date

Printed Name

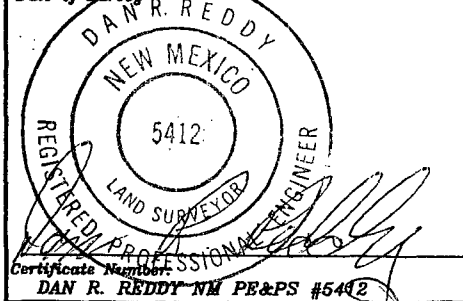
18 SURVEYOR CERTIFICATION
SURFACE LOCATION ONLY

I hereby certify that the well location shown on this plat was plotted from field notes of actual surveys made by me or under my supervision, and that the same is true and correct to the best of my belief.

Signature and Seal of Professional Surveyor:

OCTOBER 12, 2007

Date of Survey



Submit to Appropriate
District Office
State Lease - 4 copies
Fee Lease - 3 copies

State of New Mexico
Energy, Minerals and Natural Resources Department

Form C-102
Revised 1-1-89

OIL CONSERVATION DIVISION

P.O. Box 2088
Santa Fe, New Mexico 87504-2088

DISTRICT I
P.O. Box 1980, Hobbs, NM 88240

DISTRICT II
P.O. Drawer DD, Artesia, NM 88210

DISTRICT III
1000 Rio Brazos Rd., Aztec, NM 87410

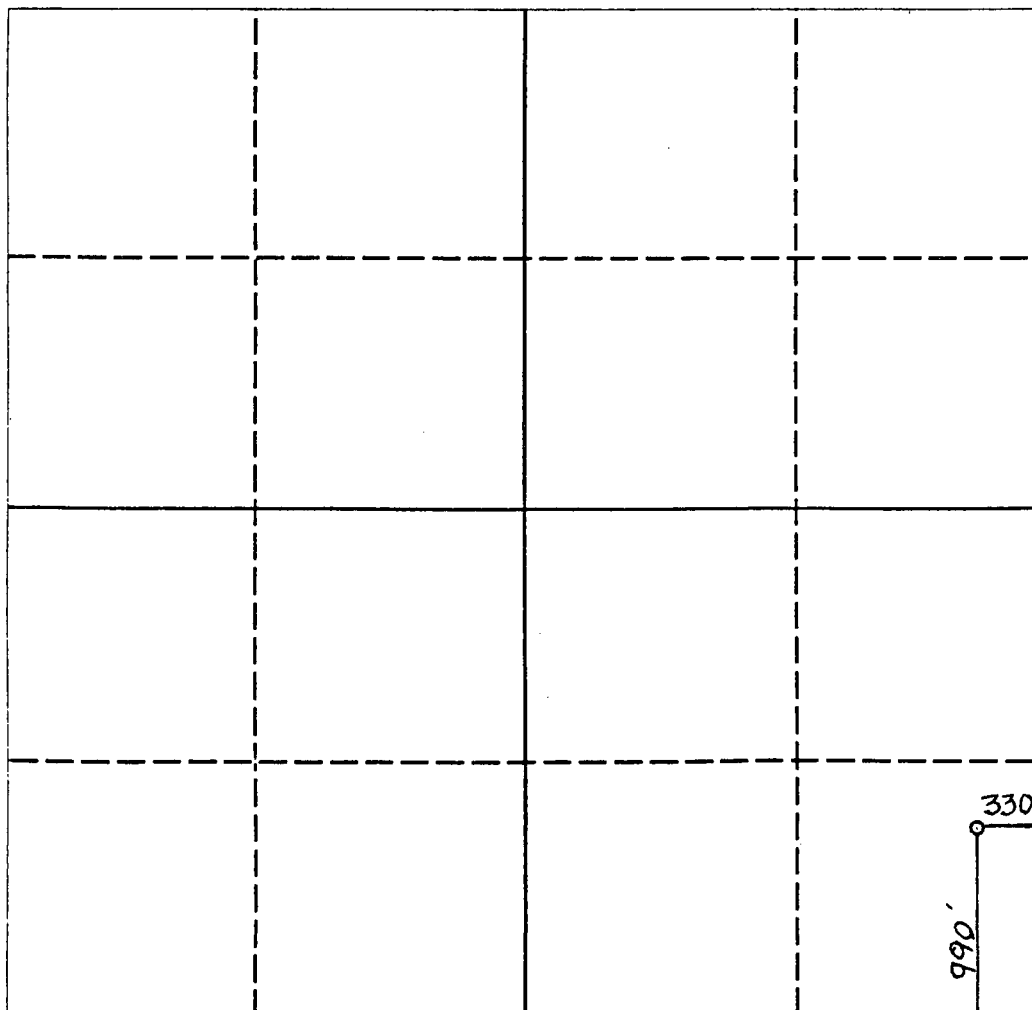
MAR - 1 1993

WELL LOCATION AND ACREAGE DEDICATION PLAT

All Distances must be from the outer boundaries of the section

| | | | | | |
|--|----------------------|-----------------------------|---------------------------------|---------------------------------|----------------------|
| Operator STRATA PRODUCTION | | | Lease COLIBRI FEDERAL | | Well No. 1 |
| Unit Letter P | Section 10 | Township 23 SOUTH | Range 32 EAST | County LEA COUNTY, NM | |
| Actual Footage Location of Well: 990 feet from the SOUTH line and 330 feet from the EAST line | | | | | |
| Ground level Elev. 3715. | Producing Formation | | Pool | Dedicated Acreage: Acres | |

- Outline the acreage dedicated to the subject well by colored pencil or hatchure marks on the plat below.
- If more than one lease is dedicated to the well, outline each and identify the ownership thereof (both as to working interest and royalty).
- If more than one lease of different ownership is dedicated to the well, have the interest of all owners been consolidated by communitization, unitization, force-pooling, etc?
☐ Yes ☐ No If answer is "yes" type of consolidation _____
If answer is "no" list the owners and tract descriptions which have actually been consolidated. (Use reverse side of this form if necessary). _____
No allowable will be assigned to the well until all interests have been consolidated (by communitization, unitization, forced-pooling, or otherwise) or until a non-standard unit, eliminating such interest, has been approved by the Division.



OPERATOR CERTIFICATION

I hereby certify that the information contained herein is true and complete to the best of my knowledge and belief.

Signature

Printed Name

Position

Company

Date

SURVEYOR CERTIFICATION

I hereby certify that the well location shown on this plat was plotted from field notes of actual surveys made by me or under my supervision, and that the same is true and correct to the best of my knowledge and belief.

Date Surveyed

FEBRUARY 19, 1993

Signature & Seal of
Professional Surveyor

Don R. Reddy
Certificate No.

NM PE&PS NO. 5412

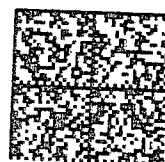
0 330 660 990 1320 1650 1980 2310 2640 2000 1500 1000 500 0

STRATA PRODUCTION COMPA

POST OFFICE BOX 1030
ROSWELL, NEW MEXICO 88202-1030

91 7108 2133 3935 5623 7680

Jack W. La Due
9522 Rockbrook Dr.
Dallas, NM 75220



UNITED STATES POSTAGE
02 1P
0003102327 JUL 24 2009
MAILED FROM ZIP CODE 88201
\$ 003.580
PITNEY BOWES

STRATA PRODUCTION COMPAN

POST OFFICE BOX 1030
ROSWELL, NEW MEXICO 88202-1030

91 7108 2133 3935 5623 7703

Ann J. Murphy Daily
PO Box 2648
Roswell, NM 88202-2648



UNITED STATES POSTAGE
02 1P
0003102327 JUL 24 2009
MAILED FROM ZIP CODE 88201
\$ 003.580
PITNEY BOWES

STRATA PRODUCTION COMPANY

POST OFFICE BOX 1030
ROSWELL, NEW MEXICO 88202-1030

91 7108 2133 3935 5623 7666



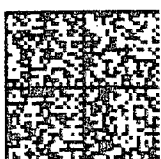
UNITED STATES POSTAGE
02 1P
0003102327
MAILED FROM ZIP CODE 88201
\$ 003.580
JUL 24 2009
PITNEY BOWES

Teddy James
708 E. Vista Parkway
Roswell, NM 88201

STRATA PRODUCTION COMPA

POST OFFICE BOX 1030
ROSWELL, NEW MEXICO 88202-1030

91 7108 2133 3935 5623 7697



UNITED STATES POSTAGE
02 1P
0003102327
MAILED FROM ZIP CODE 88201
\$ 003.580
JUL 24 2009
PITNEY BOWES

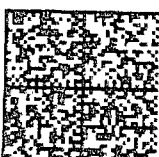
Alice De Sanders
PO Box 7669
Dallas, TX 75209-0669

STRATA PRODUCTION COMPAN

POST OFFICE BOX 1030
ROS WELL, NEW MEXICO 88202-1030



91 7108 2133 3935 5623 7642



UNITED STATES POSTAGE
PITNEY BOWES
02 1P
0003102327 JUL 24 2009
\$ 003.580
MAILED FROM ZIP CODE 88201

S.H. Cavin
PO Box 1125
Roswell, NM 88202-1125

STRATA PRODUCTION COMPAN

POST OFFICE BOX 1030
ROS WELL, NEW MEXICO 88202-1030



91 7108 2133 3935 5623 7659



UNITED STATES POSTAGE
PITNEY BOWES
02 1P
0003102327 JUL 24 2009
\$ 003.580
MAILED FROM ZIP CODE 88201

Rossmere LLC
2865 Rossmere St.
Colorado Springs, CO 80919

STRATA PRODUCTION COMPANY

POST OFFICE BOX 1030

ROSWELL, NEW MEXICO 88202-1030

91 7108 2133 3935 5623 7635

Western Oil Producers INC
PO Box 2800
Midland, TX 79702



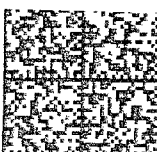
UNITED STATES POSTAGE
PITNEY BOWES
02 1P \$003.580
0003102327 JUL 24 2009
MAILED FROM ZIP CODE 88201

STRATA PRODUCTION COMPANY

POST OFFICE BOX 1030

ROSWELL, NEW MEXICO 88202-1030

91 7108 2133 3935 5623 7673



UNITED STATES POSTAGE
PITNEY BOWES
02 1P \$003.580
0003102327 JUL 24 2009
MAILED FROM ZIP CODE 88201

Helen Grevey LLC
2015 Wyoming Blvd. Suite G
Albuquerque, NM 87112

STRATA PRODUCTION COMPANY

POST OFFICE BOX 1030
ROS WELL, NEW MEXICO 88202-1030

91 7108 2133 3935 5623 7727

Hutchings Oil Company
PO Box 1216
Albuquerque, NM 87103-1216



UNITED STATES POSTAGE
PITNEY BOWES
02 1P \$ 003.580
0003102327 JUL 24 2009
MAILED FROM ZIP CODE 88201

STRATA PRODUCTION COMPANY

POST OFFICE BOX 1030
ROS WELL, NEW MEXICO 88202-1030

91 7108 2133 3935 5623 7710

Surf Oil & Gas C/O May, Taylor, &
Company
302 West Tilden St
Roswell, NM 88201



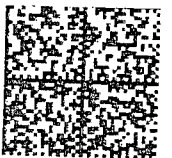
UNITED STATES POSTAGE
PITNEY BOWES
02 1P \$ 003.580
0003102327 JUL 24 2009
MAILED FROM ZIP CODE 88201

STRATA PRODUCTION COMPAN

POST OFFICE BOX 1030
ROSWELL, NEW MEXICO 88202-1030

91 7108 2133 3935 5623 7604

James G. McClelland
4 Country Hill Road
Roswell, NM 88201



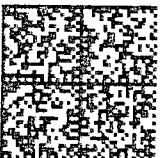
UNITED STATES POSTAGE
02 1P
0003102327 JUL 24 2009
MAILED FROM ZIP CODE 88201
PITNEY BOWES
\$ 003.580

STRATA PRODUCTION COMPAN

POST OFFICE BOX 1030
ROSWELL, NEW MEXICO 88202-1030

91 7108 2133 3935 5623 7611

Robert W. Eaton
2406 Northwood Ct. NW
Albuquerque, NM 87107



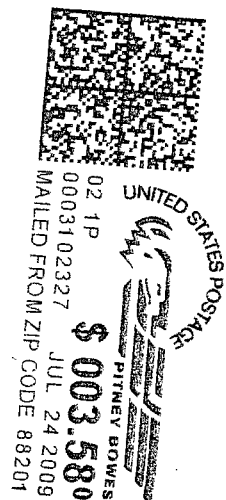
UNITED STATES POSTAGE
02 1P
0003102327 JUL 24 2009
MAILED FROM ZIP CODE 88201
PITNEY BOWES
\$ 003.580

STRATA PRODUCTION COMPAN

POST OFFICE BOX 1030
ROSWELL, NEW MEXICO 88202-1030

91 7108 2133 3935 5623 7734

Alasco Oil & Gas
302 West Tilden St
Roswell, NM 88202

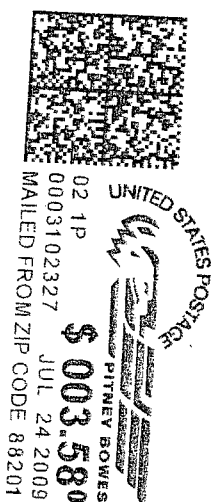


STRATA PRODUCTION COMPAN

POST OFFICE BOX 1030
ROSWELL, NEW MEXICO 88202-1030

91 7108 2133 3935 5623 7598

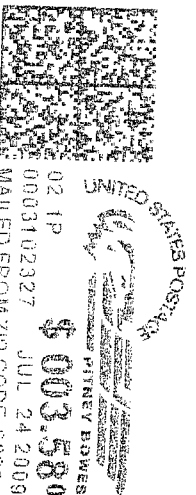
Perry E. Esping EFO Holdings, Inc/
C/o P.E. Esping
2828 Routh Street Suite 500
Dallas, TX 75201



STRATA PRODUCTION COMPA

POST OFFICE BOX 1030
ROSWELL, NEW MEXICO 88202-1030

91 1 110 000 3 333 5623 7741

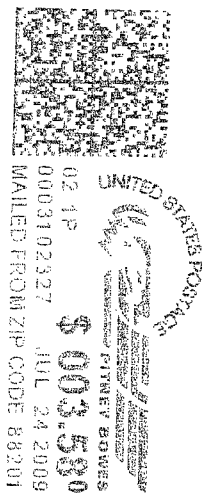


Murphy 1987 Irrevocable Trust
PO Box 2164
Roswell, NM 88202-2164

STRATA PRODUCTION COMPAN

POST OFFICE BOX 1030
ROSWELL, NEW MEXICO 88202-1030

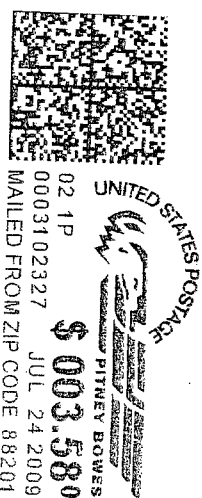
91 7108 2133 3935 5623 7581



Permian Hunter Corporation
4579 Wander Lane
Holladay, UT 84117

STRATA PRODUCTION COMPANY
POST OFFICE BOX 1030
ROSWEIL, NEW MEXICO 88202-1030

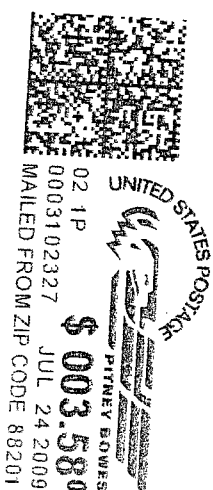
91 7108 2133 3935 5623 7574



Warren INC
PO Box 10400
Albuquerque, NM 87184-0400

STRATA PRODUCTION COMPANY
POST OFFICE BOX 1030
ROSWEIL, NEW MEXICO 88202-1030

91 7108 2133 3935 5623 7574



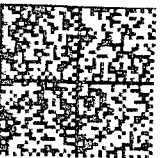
Winn Investments INC.
706 W. Brazos
Roswell, NM 88201

STRATA PRODUCTION COMPANY

POST OFFICE BOX 1030
ROS WELL, NEW MEXICO 88202-1030

91 7108 2133 3935 5623 7550

Harold Scott
Route 1, Box 148-A
Sayre, OK 73662



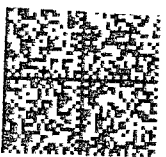
UNITED STATES POSTAGE
02 1P
0003102327 JUL 24 2009
MAILED FROM ZIP CODE 88201
\$ 003.580
PITNEY BOWES

STRATA PRODUCTION COMPANY

POST OFFICE BOX 1030
ROS WELL, NEW MEXICO 88202-1030

91 7108 2133 3935 5623 7543

Monarch Oil & Gas INC.
PO Box 1473
Roswell, NM 88202-1473

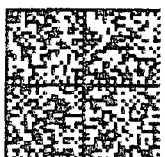


UNITED STATES POSTAGE
02 1P
0003102327 JUL 24 2009
MAILED FROM ZIP CODE 88201
\$ 003.580
PITNEY BOWES

STRATA PRODUCTION COMPANY

POST OFFICE BOX 1030
ROSWELL, NEW MEXICO 88202-1030

91 7108 2133 3935 5623 7536



UNITED STATES POSTAGE
02 1P
0003102327 JUL 24 2009
MAILED FROM ZIP CODE 88201
\$ 003.580
PITNEY BOWES

Maurice Mordka
1800 N. Grady

Tucson, AZ 85715-4510

STRATA PRODUCTION COMPANY

POST OFFICE BOX 1030
ROSWELL, NEW MEXICO 88202-1030

91 7108 2133 3935 5623 7528



UNITED STATES POSTAGE
02 1P
0003102327 JUL 24 2009
MAILED FROM ZIP CODE 88201
\$ 003.580
PITNEY BOWES

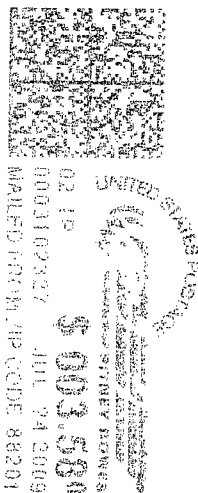
Marianne Fischer LLC
2015 Wyoming Blvd. Suite G
Albuquerque, NM 87112

STRATA PRODUCTION COMPANY

POST OFFICE BOX 1030
ROSWELL, NEW MEXICO 88202-1030

91 7108 2133 3935 5623 7529

Michael J. Norton III
60 Beach Ave. Bay View
South Dartmouth, MA 2748

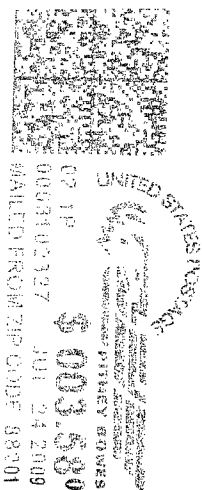


STRATA PRODUCTION COMPAN

POST OFFICE BOX 1030
ROSWELL, NEW MEXICO 88202-1030

91 7108 2133 3935 5623 7758

Bane Bigbie
PO Box 998
Ardmore, OK 73402-0998



STRATA PRODUCTION COMPANY

POST OFFICE BOX 1030
ROSWELL, NEW MEXICO 88202-1030

91 7108 2133 3935 5623 7765

Bob Buddendorf
10 Sundance Circle
Santa Fe, NM 87506

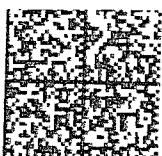


UNITED STATES POSTAGE
PITNEY BOWES
02 1P
0003102327 JUL 24 2009
\$ 003.580
MAILED FROM ZIP CODE 88201

STRATA PRODUCTION COMPANY

POST OFFICE BOX 1030
ROSWELL, NEW MEXICO 88202-1030

91 7108 2133 3935 5623 7512



UNITED STATES POSTAGE
PITNEY BOWES
02 1P
0003102327 JUL 24 2009
\$ 003.580
MAILED FROM ZIP CODE 88201

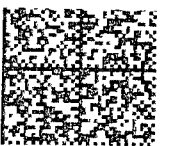
LLC. Centennial
PO Box 1837
Roswell, NM 88202-1837

STRATA PRODUCTION COMPANY

POST OFFICE BOX 1030
ROSWELL, NEW MEXICO 88202-1030

91 7108 2133 3935 5752 8473

Paul R. Yednak
11 Myrtle Avenue
Dobbs Ferry, NY 10522



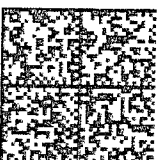
UNITED STATES POSTAGE
PITNEY BOWES
02 1P
0003102327 JUL 24 2009
MAILED FROM ZIP CODE 88201
\$ 003.580

STRATA PRODUCTION COMPAN

POST OFFICE BOX 1030
ROSWELL, NEW MEXICO 88202-1030

91 7108 2133 3935 5752 8480

Bonham Farms
4402 W. Berrendo
Roswell, NM 88201



UNITED STATES POSTAGE
PITNEY BOWES
02 1P
0003102327 JUL 24 2009
MAILED FROM ZIP CODE 88201
\$ 003.580

STRATA PRODUCTION COMPANY

POST OFFICE BOX 1030
ROS WELL, NEW MEXICO 88202-1030

91 7108 2133 3935 5752 8466

Permian Basin Investment Corp.
C/O Bank Of The Southwest/ Brent
Poindexter
PO Box 1638
Roswell, NM 88202-1638



UNITED STATES POSTAGE
PITNEY BOWES
02 1P \$003.580
0003102327 JUL 24 2009
MAILED FROM ZIP CODE 88201

STRATA PRODUCTION COMPANY

POST OFFICE BOX 1030
ROS WELL, NEW MEXICO 88202-1030

91 7108 2133 3935 5752 8459

Scott Exploration
PO Box 1834
Roswell, NM 88202-1834



UNITED STATES POSTAGE
PITNEY BOWES
02 1P \$003.580
0003102327 JUL 24 2009
MAILED FROM ZIP CODE 88201

STRATA PRODUCTION COMPAN

POST OFFICE BOX 1030

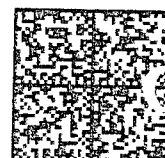
ROSWELL, NEW MEXICO 88202-1030

91 7108 2133 3935 5752 8503

CRDF LTD

PO Box 7127

Dallas, TX 75209-7127



UNITED STATES POSTAGE
02 1P
0003102327
JUL 24 2009
\$ 003.580
PITNEY BOWES
MAILED FROM ZIP CODE 88201

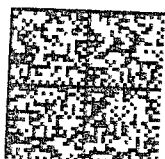
STRATA PRODUCTION COMPAN

POST OFFICE BOX 1030

ROSWELL, NEW MEXICO 88202-1030

91

7108 2133 3935 5752 8503



UNITED STATES POSTAGE
02 1P
0003102327
JUL 24 2009
\$ 003.580
PITNEY BOWES
MAILED FROM ZIP CODE 88201

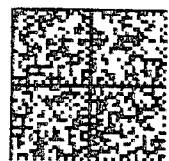
Mitchell Exploration INC.
6212 Homestead Blvd
Midland, TX 79707

STRATA PRODUCTION COMPAN

POST OFFICE BOX 1030
ROS WELL, NEW MEXICO 88202-1030

91 7108 2133 3935 5752 8404

Innoventions INC
PO Box 20711
Albuquerque, NM 87154-0711



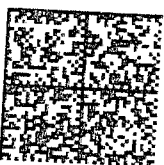
UNITED STATES POSTAGE
02 1P
\$ 003.580
0003102327 JUL 24 2009
MAILED FROM ZIP CODE 88201

STRATA PRODUCTION COMPAN

POST OFFICE BOX 1030
ROS WELL, NEW MEXICO 88202-1030

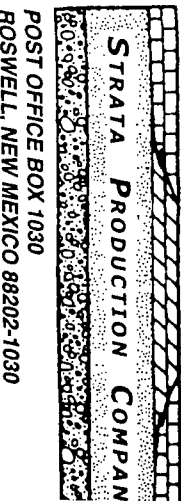
91 7108 2133 3935 5752 8411

Donald E. Wenner
1600 S.E. Main Suite F
Roswell, NM 88203



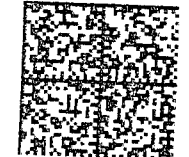
UNITED STATES POSTAGE
02 1P
\$ 003.580
0003102327 JUL 24 2009
MAILED FROM ZIP CODE 88201

POST OFFICE BOX 1030
ROSWELL, NEW MEXICO 88202-1030



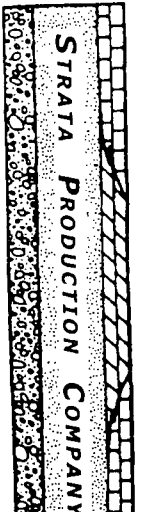
91 7108 2133 3935 5623 7789

Marcia Joy Varel C/O Bright &
Bright, LLP
5944 Luther Lane Suite 600
Dallas, TX 75225



UNITED STATES POSTAGE
PRIMEV BOWES
02 1P
0003102327
MAILED FROM ZIP CODE 88201
\$ 003.580
JUL 24 2009

POST OFFICE BOX 1030
ROSWELL, NEW MEXICO 88202-1030



91 7108 2133 3935 5623 7789

Don E. Williams Estate
219 Rush Creek Drive
Rockwall, TX 75087

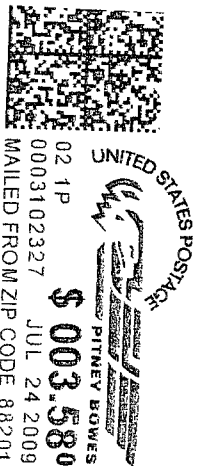


UNITED STATES POSTAGE
PRIMEV BOWES
02 1P
0003102327
MAILED FROM ZIP CODE 88201
\$ 003.580
JUL 24 2009

STRATA PRODUCTION COMPANY

POST OFFICE BOX 1030
ROSWELL, NEW MEXICO 88202-1030

91 7108 2133 3935 5752 8435



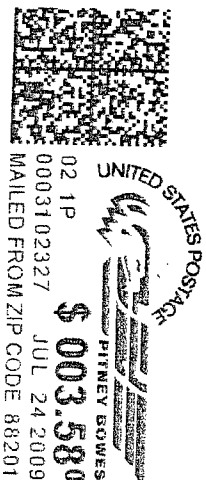
Eileen Grevey LLC
2015 Wyoming Blvd. Suite G
Albuquerque, NM 87112

STRATA PRODUCTION COMPANY

POST OFFICE BOX 1030
ROSWELL, NEW MEXICO 88202-1030

CERTIFIED MAIL

91 7108 2133 3935 5752 8497



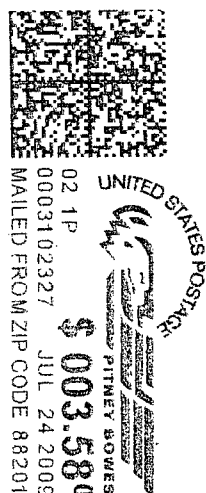
Centennial, LLC
PO Box 1837
Roswell, NM 88202-1837

CERTIFIED MAIL

STRATA PRODUCTION COMPAN

POST OFFICE BOX 1030
ROS WELL, NEW MEXICO 88202-1030

91 7108 2133 3935 5752 8398



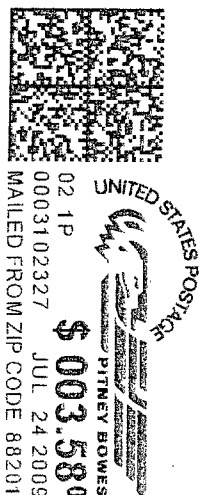
Worrall Investment Corporation
PO Box 1834
Roswell, NM 88202-1834

CERTIFIED MAIL

STRATA PRODUCTION COMPAN

POST OFFICE BOX 1030
ROS WELL, NEW MEXICO 88202-1030

91 7108 2133 3935 5752 8428



Hat Mesa Oil Company
PO Box 1216
Albuquerque, NM 87103-1216

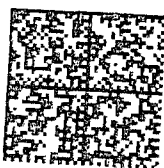
CERTIFIED MAIL

STRATA PRODUCTION COMP

POST OFFICE BOX 1030
ROS WELL, NEW MEXICO 88202-1030

91 7108 2133 3935 5752 8361

Earl E. Ellis
202 Cleft Road
Mill Neck, NY 11765



UNITED STATES POSTAGE
PITNEY BOWES
02 1P
0003102327 JUL 24 2009
MAILED FROM ZIP CODE 88201
\$ 003.580

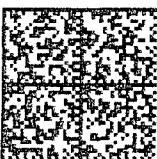
CERTIFIED MAIL

STRATA PRODUCTION COMP

POST OFFICE BOX 1030
ROS WELL, NEW MEXICO 88202-1030

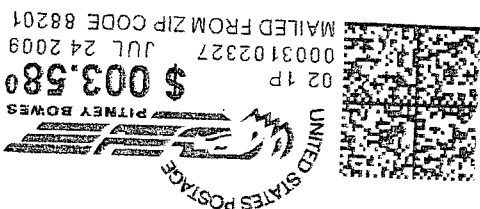
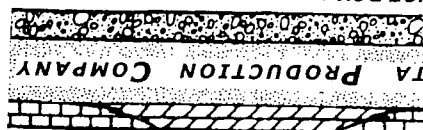
91 7108 2133 3935 5623 7796

Wade P. Carrigan
PO Box 1908
Gilbert, AZ 85299-1908



UNITED STATES POSTAGE
PITNEY BOWES
02 1P
0003102327 JUL 24 2009
MAILED FROM ZIP CODE 88201
\$ 003.580

91 7108 2133 3935 5623 7802



James K. & Martha L. Lusk
2020 Osceola St.
Denver, CO 80212

Ezeanyim, Richard, EMNRD

From: Jennifer Zapata [jzapata@stratanm.com]
Sent: Wednesday, August 12, 2009 9:09 AM
To: Ezeanyim, Richard, EMNRD
Subject: Cuervo & Urraca Production rate

The Cuervo 3 and Urraca 3 produce an average of 35 mcf per day. The Cuervo 2 and Urraca 2 produce an average of 25 mcf per day.

Jennifer R. Zapata

Production Analyst
Strata Production Company
1301 N. Sycamore Ave.
P.O. Box 1030
Roswell, NM 88201
Tele: (575) 622-1127
Fax: (575) 623-3522
jzapata@stratanm.com

This inbound email has been scanned by the MessageLabs Email Security System.
