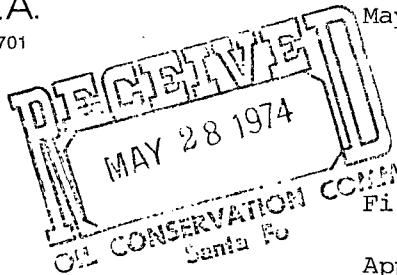


**EXXON COMPANY, U.S.A.**  
POST OFFICE BOX 1600 • MIDLAND, TEXAS 79701

PRODUCTION DEPARTMENT  
MIDCONTINENT DIVISION  
R. E. HAMMOND  
OPERATIONS MANAGER



May 21, 1974

*NSP 953*

*104 D II*

*Due June 27*

File No. 22-3

Application for Non-Standard  
Gas Proration Unit  
Morrow Wildcat Pool  
Eddy County, New Mexico

*State land*

New Mexico Oil Conservation Commission  
P. O. Box 2088  
Santa Fe, New Mexico 87501

Attention: Mr. A. L. Porter, Jr.

Gentlemen:

Exxon Corporation respectfully requests administrative approval of a non-standard gas proration unit for our Turkey Track-State Com. Well No. 1.

Statewide Rule 103(B)(1)(a) requires a wildcat gas well which is projected to a formation of Pennsylvanian age or older be located on a drilling tract consisting of 320 acres, more or less, comprising any two contiguous quarter sections of a single governmental section. Section 30, T-19-S, R-29-E, is a short section and the N/2 of the section consists of only 304.89 acres.

In support of this application, we have attached a plat showing the acreage to be dedicated to this well and the well location.

Very truly yours,

*R. E. Hammond*  
R. E. Hammond

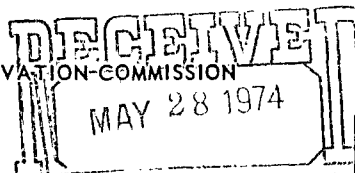
DLC:mej

Attachment

cc: NMOCC, Artesia

NO. OF COPIES RECEIVED	
DISTRIBUTION	
SANTA FE	
FILE	
U.S.G.S.	
LAND OFFICE	
OPERATOR	

# NEW MEXICO OIL CONSERVATION COMMISSION



Form C-101  
Revised 1-1-65

5A. Indicate Type of Lease	
STATE <input checked="" type="checkbox"/>	FEE <input type="checkbox"/>
5. State Oil & Gas Lease No. L-323	
LG-1,199, K-4,252,	

## APPLICATION FOR PERMIT TO DRILL, DEEPEN, OR PLUG BACK

1a. Type of Work		7. Unit Agreement Name	
b. Type of Well DRILL <input checked="" type="checkbox"/> DEEPEN <input type="checkbox"/> PLUG BACK <input type="checkbox"/> OIL WELL <input type="checkbox"/> GAS WELL <input checked="" type="checkbox"/> OTHER <input type="checkbox"/> SINGLE ZONE <input checked="" type="checkbox"/> MULTIPLE ZONE <input type="checkbox"/>		8. Farm or Lease Name Turkey Tract-State Com.	
2. Name of Operator Exxon Corporation		9. Well No. 1	
3. Address of Operator P. O. Box 1600, Midland, Texas 79701		10. Field and Pool, or Wildcat Wildcat	
4. Location of Well UNIT LETTER "C" LOCATED 1,980 FEET FROM THE West LINE AND 660 FEET FROM THE North LINE OF SEC. 30 TWP. 19-S RGE. 29-E NMPM		12. County Eddy	
19. Proposed Depth 11,600		19A. Formation Morrow	
20. Rotary or C.T. Rotary		21. Elevations (Show whether DF, RT, etc.) To be filed later	
21A. Kind & Status Plug. Bond Blanket on file		21B. Drilling Contractor Unknown	
22. Approx. Date Work will start July 1, 1974			

## PROPOSED CASING AND CEMENT PROGRAM

SIZE OF HOLE	SIZE OF CASING	WEIGHT PER FOOT	SETTING DEPTH	SACKS OF CEMENT	EST. TOP
17-1/2"	13-3/8"	48# H-40	350'	300	Cir. to Surface
12-1/4"	9-5/8"	40# J-55	2,900'	600	*
8-3/4"	5-1/2"	17# K-55 N-80 & O-95	11,600'	700	**

\*Circ. back to cover the top of the Delaware Lime (occurs at approx. 1,500').

\*\*Circ. back to approximately 9,000' from the surface.

HOWCO method of cementing to be used.

Minimum drilling fluid for samples and logging.

A diagrammatic sketch and specifications of the Blowout Preventer equipment is attached.

IN ABOVE SPACE DESCRIBE PROPOSED PROGRAM: IF PROPOSAL IS TO DEEPEN OR PLUG BACK, GIVE DATA ON PRESENT PRODUCTIVE ZONE AND PROPOSED NEW PRODUCTIVE ZONE. GIVE BLOWOUT PREVENTER PROGRAM, IF ANY.

I hereby certify that the information above is true and complete to the best of my knowledge and belief.

Signed D. L. Clemmer Title Proration Specialist Date 5-22-74  
(This space for State Use)

APPROVED BY \_\_\_\_\_ TITLE \_\_\_\_\_ DATE \_\_\_\_\_

CONDITIONS OF APPROVAL, IF ANY:

BLOWOUT PREVENTER SPECIFICATION  
EQUIPMENT DESCRIPTION

TYPE II

All equipment should be at least \* 2,000 psi WP or higher unless otherwise specified.

\*\* 3,000

\* 13<sup>3</sup>/<sub>8</sub>" CSG.

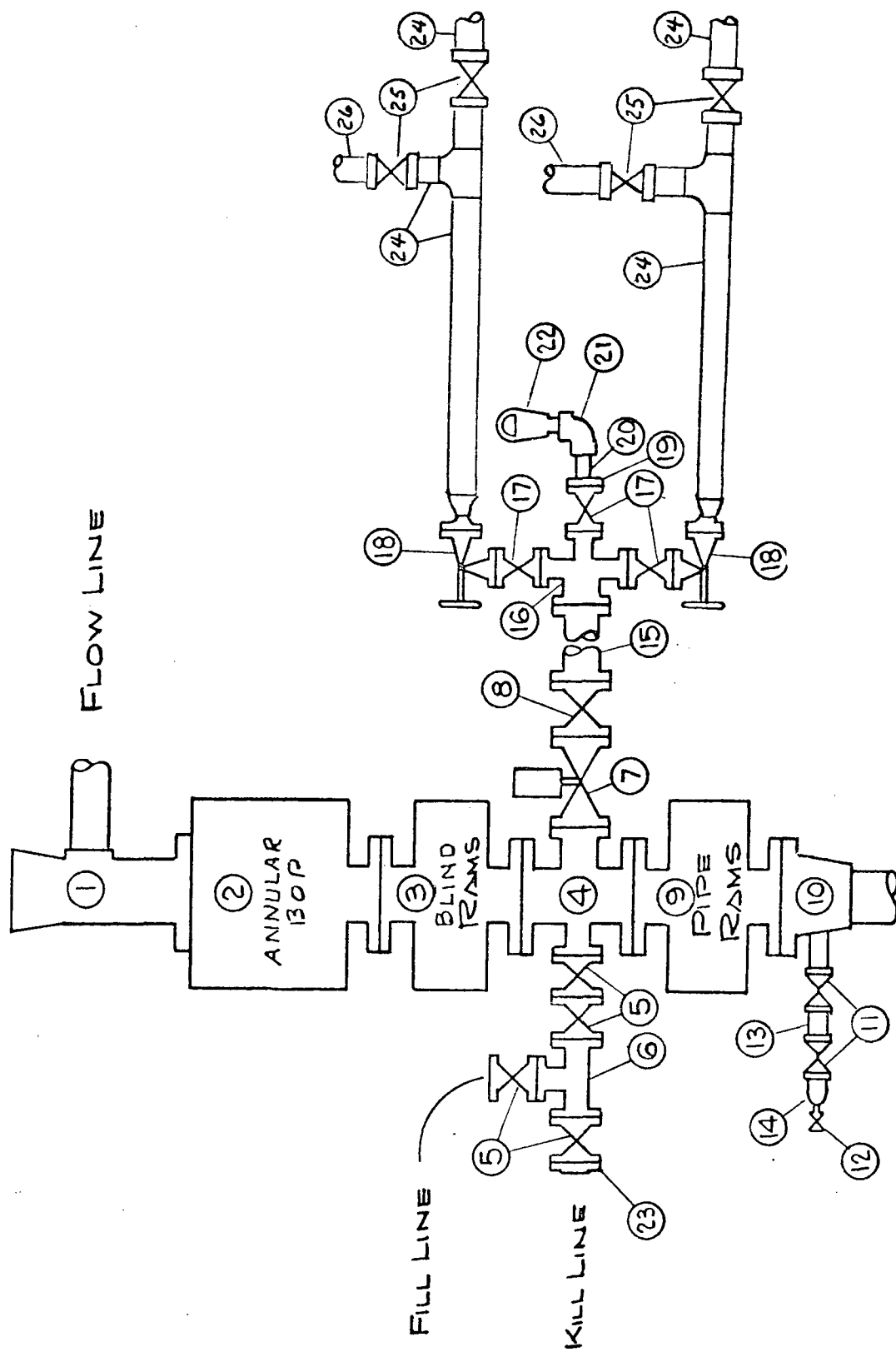
\*\* 9<sup>5</sup>/<sub>8</sub>" CSG.

1. Bell Nipple.
2. Hydril or Shaffer bag type preventer.
3. Ram type pressure operated blowout preventer with blind rams.
4. Flanged spool with one 4-inch and one 2-inch (minimum) outlet.
5. 2-inch (minimum) flanged plug or gate valve.
6. 2-inch by 2-inch by 2-inch (minimum) flanged tee.
7. 4-inch pressure operated gate valve.
8. 4-inch flanged gate or plug valve.
9. Ram type pressure operated blowout preventer with pipe rams.
10. Flanged type casing head with one side outlet (furnished by Exxon).
11. 2-inch threaded (or flanged) plug or gate valve (furnished by Exxon).  
Flanged on 5000# WP, threaded on 3000# WP or less.
12. Needle valve (furnished by Exxon).
13. 2-inch nipple (furnished by Exxon).
14. Tapped bull plug (furnished by Exxon).
15. 4-inch flanged spacer spool.
16. 4-inch by 2-inch by 2-inch by 2-inch flanged cross.
17. 2-inch flanged plug or gate valve.
18. 2-inch flanged adjustable choke.
19. 2-inch threaded flange.
20. 2-inch XXH nipple.
21. 2-inch forged steel 90° Ell.
22. Cameron (or equal.) threaded pressure gage.
23. Threaded flange.
24. 2-1/2-inch pipe, 300' to pit, anchored.
25. 2-1/2-inch SE gate valve.
26. 2-1/2-inch line to steel pit or separator.

NOTES:

1. Items 3, 4 and 9 may be replaced with double ram type preventer with side outlets between the rams.
2. The two valves next to the stack on the fill and kill line to be closed unless drill string is being pulled.
3. Kill line is for emergency use only. This connection shall not be used for filling.
4. Replacement pipe rams and blind rams shall be on location at all times.
5. Only type U, LWS, and QRC ram type preventers with secondary seals acceptable for 5000 psi WP and higher.
6. Type E ram type BOP's with factory modified side outlets may be used on 3000 psi WP or lower BOP stacks.

# BLOWOUT PREVENTER SPECIFICATION TYPE II



All distances must be from the outer boundaries of the Section.

Operator Exxon Corporation		Lease TURKEY TRACK - STATE COM.		Well No. 1
Unit Letter "C"	Section 30	Township 19 South	Range 29 East	County Eddy
Actual Footage Location of Well: 1980 feet from the West line and 660 feet from the North line				
Ground Level Elev.	Producing Formation Morrow	Pool Wildcat	Dedicated Acreage: 304.89 Acres	

1. Outline the acreage dedicated to the subject well by colored pencil or hachure marks on the plat below.
2. If more than one lease is dedicated to the well, outline each and identify the ownership thereof (both as to working interest and royalty).
3. If more than one lease of different ownership is dedicated to the well, have the interests of all owners been consolidated by communitization, unitization, force-pooling, etc?

☒ Yes ☐ No If answer is "yes," type of consolidation This Acreage Will Be Communitized

If answer is "no," list the owners and tract descriptions which have actually been consolidated. (Use reverse side of this form if necessary.)

No allowable will be assigned to the well until all interests have been consolidated (by communitization, unitization, forced-pooling, or otherwise) or until a non-standard unit, eliminating such interests, has been approved by the Commission.

CERTIFICATION			
I hereby certify that the information contained herein is true and complete to the best of my knowledge and belief.			
Name <u>A. L. Clemmer</u>			
Position <u>Proration Specialist</u>			
Company <u>Exxon Corporation</u> <u>Box 1600 Midland, Texas</u>			
Date <u>May 21, 1974</u>			
I hereby certify that the well location shown on this plat was plotted from field notes of actual surveys made by me or under my supervision, and that the same is true and correct to the best of my knowledge and belief.			
Date Surveyed <u>May 20, 1974</u>			
Registered Professional Engineer and/or Land Surveyor <u>A. S. Hunterfield</u>			
Certificate No. <u>1382</u>			

P.R. Bass L-323 1980'	Exxon K-4252 660'	Exxon LG-1199	Exxon LG-1199
32.44 Ac.	40.00 Ac.	40.00 Ac.	40.00 Ac.
P.R. Bass L-323	Exxon K-4252	Exxon LG-1199	Exxon LG-1199
32.45 Ac.	40.00 Ac.	40.00 Ac.	40.00 Ac.

0 330 660 990 1320 1650 1980 2310 2640 2000 1500 1000 500 0