

| | | | | | |
|--------------------|------------------|----------------|-------------------|-------------|------------------------|
| DATE IN 9/23/09 | SUSPENSE None | ENGINEER DB | LOGGED IN 9/23 | TYPE NSL | APP NO DWK092855965 |
|--------------------|------------------|----------------|-------------------|-------------|------------------------|

ABOVE THIS LINE FOR DIVISION USE ONLY

NEW MEXICO OIL CONSERVATION DIVISION

- Engineering Bureau -

1220 South St. Francis Drive, Santa Fe, NM 87505



BOPCO
James Ranch V #1/06

ADMINISTRATIVE APPLICATION CHECKLIST

THIS CHECKLIST IS MANDATORY FOR ALL ADMINISTRATIVE APPLICATIONS FOR EXCEPTIONS TO DIVISION RULES AND REGULATIONS WHICH REQUIRE PROCESSING AT THE DIVISION LEVEL IN SANTA FE

Application Acronyms:

[NSL-Non-Standard Location] [NSP-Non-Standard Proration Unit] [SD-Simultaneous Dedication]
 [DHC-Downhole Commingling] [CTB-Lease Commingling] [PLC-Pool/Lease Commingling]
 [PC-Pool Commingling] [OLS - Off-Lease Storage] [OLM-Off-Lease Measurement]
 [WFX-Waterflood Expansion] [PMX-Pressure Maintenance Expansion]
 [SWD-Salt Water Disposal] [IPI-Injection Pressure Increase]
 [EOR-Qualified Enhanced Oil Recovery Certification] [PPR-Positive Production Response]

[1] TYPE OF APPLICATION - Check Those Which Apply for [A]

[A] Location - Spacing Unit - Simultaneous Dedication
☒ NSL ☐ NSP ☐ SD

Check One Only for [B] or [C]

[B] Commingling - Storage - Measurement
☐ DHC ☐ CTB ☐ PLC ☐ PC ☐ OLS ☐ OLM

[C] Injection - Disposal - Pressure Increase - Enhanced Oil Recovery
☐ WFX ☐ PMX ☐ SWD ☐ IPI ☐ EOR ☐ PPR

[D] Other: Specify _____

[2] NOTIFICATION REQUIRED TO: - Check Those Which Apply, or Does Not Apply

[A] ☐ Working, Royalty or Overriding Royalty Interest Owners

[B] ☐ Offset Operators, Leaseholders or Surface Owner

[C] ☐ Application is One Which Requires Published Legal Notice

[D] ☐ Notification and/or Concurrent Approval by BLM or SLO
 U.S. Bureau of Land Management - Commissioner of Public Lands, State Land Office

[E] ☐ For all of the above, Proof of Notification or Publication is Attached, and/or,

[F] ☐ Waivers are Attached

[3] SUBMIT ACCURATE AND COMPLETE INFORMATION REQUIRED TO PROCESS THE TYPE OF APPLICATION INDICATED ABOVE.

[4] **CERTIFICATION:** I hereby certify that the information submitted with this application for administrative approval is **accurate** and **complete** to the best of my knowledge. I also understand that **no action** will be taken on this application until the required information and notifications are submitted to the Division.

Note: Statement must be completed by an individual with managerial and/or supervisory capacity.

James Bruce
 P.O. Box 1056
 Santa Fe, New Mexico 87504

Signature

Attorney for Applicant
 Title Date

jamesbruc@aol.com
 e-mail Address

RECEIVED OGD
 2009 SEP 23 A 7:44

9/22/09

JAMES BRUCE
ATTORNEY AT LAW

POST OFFICE BOX 1056
SANTA FE, NEW MEXICO 87504

369 MONTEZUMA, NO. 213
SANTA FE, NEW MEXICO 87501

(505) 982-2043 (Phone)
(505) 660-6612 (Cell)
(505) 982-2151 (Fax)

jamesbruc@aol.com

September 22, 2009

Mark E. Fesmire, P.E.
Oil Conservation Division
1220 South St. Francis Drive
Santa Fe, New Mexico 87505

Dear Mr. Fesmire:

Pursuant to NMAC 19.15.15.13, BOPCO, L.P. applies for approval of an unorthodox oil well location for the following well:


| | |
|----------------------------------|--|
| <u>Well:</u> | James Ranch Unit Well No. 106 |
| <u>Surface location:</u> | 1595 feet FSL & 1096 feet FWL §36 |
| <u>Bottom hole location:</u> | 2160 feet FSL & 330 feet FEL §35 |
| <u>Well unit (project area):</u> | N½S½ of Section 35 and NW¼SW¼ of Section 36, Township 22 South, Range 30 East, N.M.P.M., Eddy County, New Mexico |

The well will be drilled to a depth sufficient to test the Southeast Quahada Ridge-Delaware Pool. The pool is spaced on statewide rules, with 40 acre spacing, and wells to be located no closer than 330 feet to a quarter-quarter section line. A Form C-102 is attached as **Exhibit A**.

The unorthodox surface location is due to placing the well near the location of the James Ranch Unit Well No. 67, which will minimize surface use. **Exhibit B**. Due to the well's directional plan, the entry point in the Delaware (1643 feet FSL & 573 feet FWL) encroaches by seven (7) feet on the SW¼SW¼ of Section 36. However, the SW¼ of Section 36 is covered by State Lease E-5229-9, which has common ownership. **Exhibit C**. Thus, the encroachment does not adversely affect any offset owners. As a result of the foregoing, notice of the application has not been given to anyone.

Please contact me if you need any further information on this application.

Very truly yours,



James Bruce

Attorney for BOPCO, L.P.

1625 N. French Dr., Hobbs, NM 88240

1301 W. Grand Avenue, Artesia, NM 88210

1000 Rio Brazos Rd., Aztec, NM 87410

1220 St. Francis Dr., Santa Fe, NM 87505

State of New Mexico
Energy, Minerals and Natural Resources Department

OIL CONSERVATION DIVISION

1220 South St. Francis Dr.
Santa Fe, New Mexico 87505

Form C-102
Revised October 12, 2005

Submit to Appropriate District Office

State Lease - 4 Copies

Fee Lease - 3 Copies

WELL LOCATION AND ACREAGE DEDICATION PLAT

☐ AMENDED REPORT

| | | | |
|----------------------------|-----------------------------------|-----------|---------------------|
| API Number 30-015-37063 | | Pool Code | Pool Name |
| Property Code | Property Name JAMES RANCH UNIT | | Well Number 106H |
| OGRID No. 260737 | Operator Name BOPCO, L.P. | | Elevation 3296' |

| | | | | | | | | | |
|---------------|---------|----------|-------|---------|---------------|------------------|---------------|----------------|--------|
| UL or lot No. | Section | Township | Range | Lot Idn | Feet from the | North/South line | Feet from the | East/West line | County |
| L | 36 | 22 S | 30 E | | 1595 | SOUTH | 1096 | WEST | EDDY |

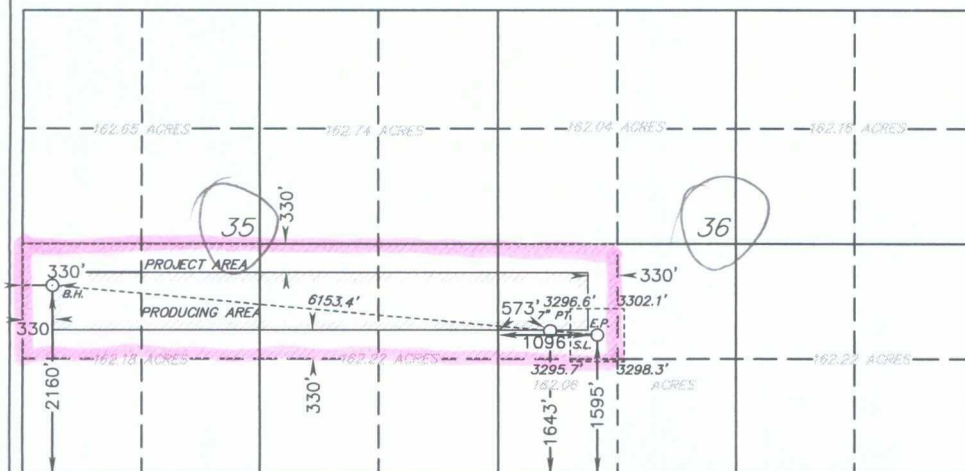
Bottom Hole Location If Different From Surface

| | | | | | | | | | |
|--------------------|-----------------|--------------------|---------------|-----------|-----------------------|---------------------------|---------------|------------------------|----------------|
| UL or lot No. L | Section 35 | Township 22 S | Range 30 E | Lot Idn | Feet from the 2160 | North/South line SOUTH | Feet from the | East/West line WEST | County EDDY |
| Dedicated Acres | Joint or Infill | Consolidation Code | | Order No. | | | | | |

NO ALLOWABLE WILL BE ASSIGNED TO THIS COMPLETION UNTIL ALL INTERESTS HAVE BEEN CONSOLIDATED
OR A NON-STANDARD UNIT HAS BEEN APPROVED BY THE DIVISION

EXHIBIT

A



BOTTOM HOLE LOCATION
LAT - N32°20'50.32"
LONG - W103°51'33.23"
SPC- N.: 490407.803
E.: 687747.830
(NAD-83)

7" CASING POINT
(NOT FROM BASIN SURVEYS)
LAT - N32°20'45.06"
LONG - W103°50'27.91"
SPC- N.: 489901.32
E.: 693353.52
(NAD-83)

SURFACE LOCATION
LAT - N32°20'44.57"
LONG - W103°50'21.82"
SPC- N.: 489854.073
E.: 693876.291
(NAD-83)

DELAWARE ENTRY POINT
LAT - N32°20'44.57"
LONG - W103°50'21.82"
SPC- N.: 489854.073
E.: 693876.291
(NAD-83)

OPERATOR CERTIFICATION

I hereby certify that the information contained herein is true and complete to the best of my knowledge and belief, and that this organization either owns a working interest or unleased mineral interest in the land including the proposed bottom hole location pursuant to a contract with an owner of such a mineral or working interest, or to a voluntary pooling agreement or a compulsory pooling order heretofore entered by the division.

Signature _____

Date _____

Printed Name _____

SURVEYOR CERTIFICATION

I hereby certify that the well location shown on this plat was plotted from field notes of actual surveys made by me or under my supervision and that the same is true and correct to the best of my belief.

~~JANUARY 5, 2009~~

Date Surveyed 10/1/00

Signature & Seal of Professional Surveyor

W.O. No. 20394

Certificate No. Gary L. Jones 7977

BASIN SURVEYS

SCALE - 1" = 2000'

SECTION 36, TOWNSHIP 22 SOUTH, RANGE 30 EAST, N.M.P.M.,
EDDY COUNTY, NEW MEXICO.

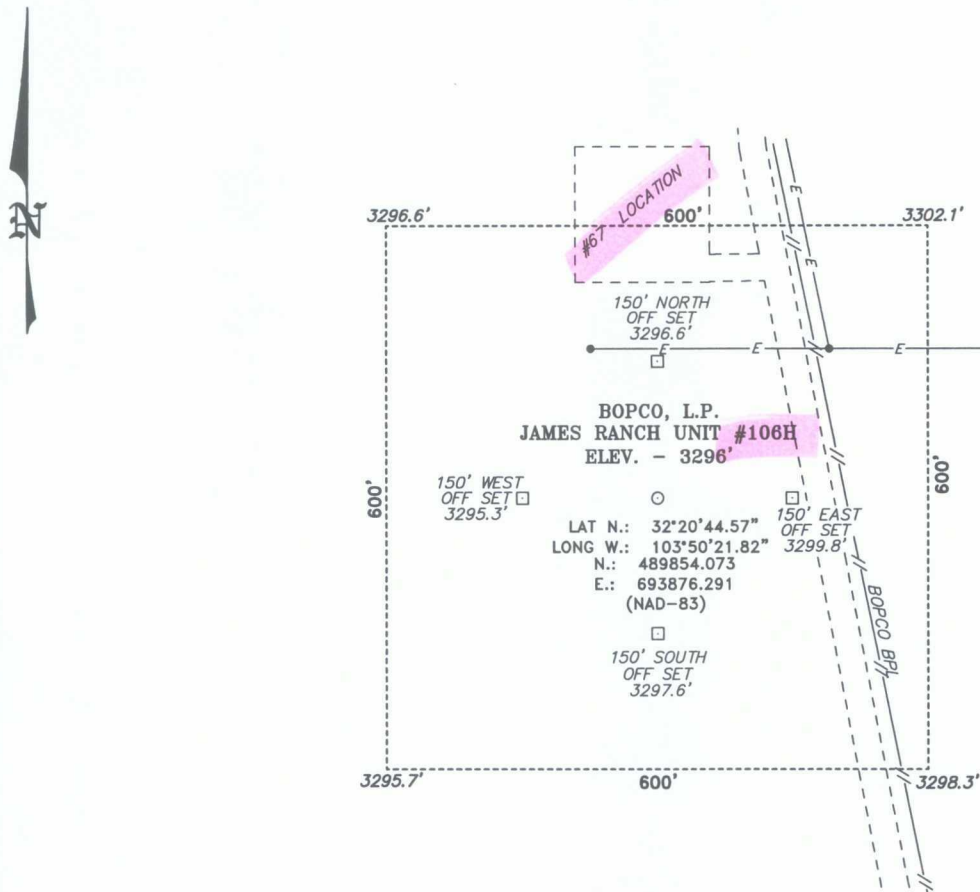
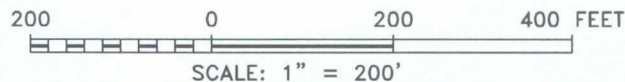


EXHIBIT **B**

DIRECTIONS TO LOCATION:

FROM THE JUNCTION OF STATE HWY 128 AND WIPP ROAD, GO NORTH ON WIPP ROAD 0.4 MILES TO LEASE ROAD, ON LEASE ROAD GO 0.3 WEST TO LEASE ROAD, ON LEASE ROAD GO NORTH 0.3 MILES TO LEASE ROAD, ON LEASE ROAD GO WEST 0.2 MILES TO LEASE ROAD, GO NORTH TO PROPOSED LOCATION.



BOPCO, L.P.

REF: JAMES RANCH UNIT #106H / WELL PAD AND TOPO

THE JAMES RANCH UNIT #106H LOCATED 1595'

FROM THE SOUTH LINE AND 1096' FROM THE WEST LINE OF
SECTION 36, TOWNSHIP 22 SOUTH, RANGE 30 EAST,

N.M.P.M., EDDY COUNTY, NEW MEXICO.

BASIN SURVEYS P.O. BOX 1786 - HOBBS, NEW MEXICO

W.O. Number: 20994 Drawn By: J. SMALL

Date: 01-08-2009 Disk: 20994 JMS

Survey Date: 01-05-2009 Sheet 1 of 1 Sheets

STATE LAND OFFICE DATA ACCESS

[Home](#)[Select a different page.....](#)[Go Tech](#)[NM State Land
Office](#)

list lease info

* Lease Prefix: * Number: * Assignment:

Example: A0 1234 0000

132 Records found.

Lease Number:

E0-5229-0009

Company name: BMT O&G NM,LLC / BEPCO, LP
Company ID: 242080
Assigned from: E0-5229-0007
Total acres: 5286.10
Prod stat: N/A

Lease term:

Lease term: 10 year lease term 1/8th roy
Issue date: 5/10/1951
Termination date: Active
Termination reason: N/A
Current term: Ex tended Primary Term

Billing information:

Bill to: BMT O&G NM,LLC / BEPCO, LP
Rent per acre: 0.50
Billing frequency: Annual
Minimum annual rent: 2643.05
Last bill date: 4 /16/2009
Next bill date: 5/10/2010
Escalation: 0

Land information:

| Section | Township | Range | Unit Letter | Lot | Tract | Acreage | Link |
|---------|----------|-------|-------------|-----|-------|---------|--------------------------------|
| 36 | 22S | 30E | A | | | 40.00 | [Land Details] |
| | | | B | | | 40.00 | [Land Details] |
| | | | C | | | 40.00 | [Land Details] |
| | | | D | | | 40.00 | [Land Details] |
| | | | E | | | 40.00 | [Land Details] |
| | | | F | | | 40.00 | [Land Details] |
| | | | G | | | 40.00 | [Land Details] |
| | | | H | | | 40.00 | [Land Details] |
| | | | K | | | 40.00 | [Land Details] |

EXHIBIT 

| | | | | | | |
|----|-----|-----|---|---|-------|----------------|
| | | | L | | 40.00 | [Land Details] |
| | | | M | | 40.00 | [Land Details] |
| | | | N | | 40.00 | [Land Details] |
| 2 | 23S | 30E | 1 | 1 | 40.39 | [Land Details] |
| | | | 2 | 2 | 40.23 | [Land Details] |
| | | | 3 | 3 | 40.05 | [Land Details] |
| | | | 4 | 4 | 39.89 | [Land Details] |
| | | | E | | 40.00 | [Land Details] |
| | | | F | | 40.00 | [Land Details] |
| | | | G | | 40.00 | [Land Details] |
| | | | H | | 40.00 | [Land Details] |
| | | | I | | 40.00 | [Land Details] |
| | | | J | | 40.00 | [Land Details] |
| | | | L | | 40.00 | [Land Details] |
| | | | M | | 40.00 | [Land Details] |
| | | | N | | 40.00 | [Land Details] |
| 16 | 23S | 30E | A | | 40.00 | [Land Details] |
| | | | B | | 40.00 | [Land Details] |
| | | | C | | 40.00 | [Land Details] |
| | | | D | | 40.00 | [Land Details] |
| | | | E | | 40.00 | [Land Details] |
| | | | F | | 40.00 | [Land Details] |
| | | | G | | 40.00 | [Land Details] |
| | | | H | | 40.00 | [Land Details] |
| | | | I | | 40.00 | [Land Details] |
| | | | J | | 40.00 | [Land Details] |
| | | | K | | 40.00 | [Land Details] |
| | | | L | | 40.00 | [Land Details] |
| | | | M | | 40.00 | [Land Details] |
| | | | N | | 40.00 | [Land Details] |
| | | | O | | 40.00 | [Land Details] |
| | | | P | | 40.00 | [Land Details] |
| 19 | 23S | 30E | 1 | 1 | 40.25 | [Land Details] |
| | | | 2 | 2 | 40.21 | [Land Details] |
| | | | 3 | 3 | 40.18 | [Land Details] |
| | | | 4 | 4 | 40.16 | [Land Details] |
| | | | F | | 40.00 | [Land Details] |
| | | | K | | 40.00 | [Land Details] |
| | | | N | | 40.00 | [Land Details] |
| 21 | 23S | 30E | A | | 40.00 | [Land Details] |
| | | | C | | 40.00 | [Land Details] |
| | | | F | | 40.00 | [Land Details] |
| | | | K | | 40.00 | [Land Details] |
| 22 | 23S | 30E | B | | 40.00 | [Land Details] |
| | | | C | | 40.00 | [Land Details] |
| | | | D | | 40.00 | [Land Details] |
| | | | E | | 40.00 | [Land Details] |
| | | | F | | 40.00 | [Land Details] |
| | | | G | | 40.00 | [Land Details] |
| | | | H | | 40.00 | [Land Details] |
| | | | I | | 40.00 | [Land Details] |
| | | | J | | 40.00 | [Land Details] |
| | | | K | | 40.00 | [Land Details] |
| | | | L | | 40.00 | [Land Details] |
| | | | M | | 40.00 | [Land Details] |
| | | | N | | 40.00 | [Land Details] |
| | | | O | | 40.00 | [Land Details] |
| | | | P | | 40.00 | [Land Details] |

Brooks, David K., EMNRD

From: Brooks, David K., EMNRD
Sent: Monday, October 05, 2009 9:40 AM
To: 'jamesbruc@aol.com'
Subject: BOPCO, LP James Ranch Unit #106H: NSL Application

Dear Jim

The referenced exception was approved on September 30, 2009 by Order NSL-6092.

Please note that NMOCD will no longer mail originals of administrative orders. Copies of the signed orders may be obtained from the Division's website.

Sincerely
David K. Brooks
Legal examiner