

TEXAS PACIFIC OIL COMPANY, INC.

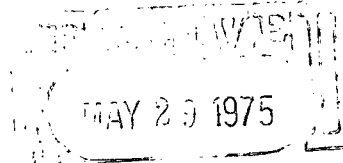
P. O. Box 4067
Midland, Texas 79701

May 27, 1975

NSP - 1000

104 - D II

Due June 28



Oil Conservation Commission
P. O. Box 2088
Santa Fe, New Mexico 87501

Attention: A. L. Porter, Jr.
Secretary-Director

Gentlemen:

Texas Pacific Oil Company, Inc. requests administrative approval of a non-standard proration unit and requests a 160 acre proration unit be assigned to the Winningham Well No. 7, located in Unit H, 1922' FNL and 488' FEL, Sec. 30, T-25-S, R-37-E, Lea County, New Mexico.

Well No. 3, located in Unit I, 1930' FSL and 330' FEL, Sec. 30, T-25-S, R-37-E, Lea County, New Mexico which has approval of a 320 acre non-standard gas proration unit per administrative order NSP-534, November 7, 1960. We, therefore, request that you reduce the size of the spacing unit for production of gas from the No. 3 well and show a non-standard gas proration unit of 160 acres each for Wells No. 3 and 7. Well No. 3 is inactive at present.

Copies to offset operators.

Very truly yours,

TEXAS PACIFIC OIL COMPANY, INC.

L. A. Wright - L7
L. A. Wright
Area Superintendent

LF/bn

Attachments

*Unit #1 dedicated to well no 7
1922' FNL & 488' FEL*

*Unit #2 dedicated to well no 3
1930' FSL & 330' FEL*

NSP-534 Superseded

OFFSET OPERATORS

Continental Oil Company
P. O. Box 460
Hobbs, New Mexico 88240

Tenneco Oil Company
Box 2511 Tenneco Building
Houston, Texas 77001

Ralph Lowe Estate
Box 832
Midland, Texas 79701

Gulf Oil Company, U.S.A.
Box 670
Hobbs, New Mexico 88240

NEW MEXICO OIL CONSERVATION COMMISSION
WELL LOCATION AND ACREAGE DEDICATION PLAT

Form C-102
Supersedes C-128
Effective 1-1-65

All distances must be from the outer boundaries of the Section.

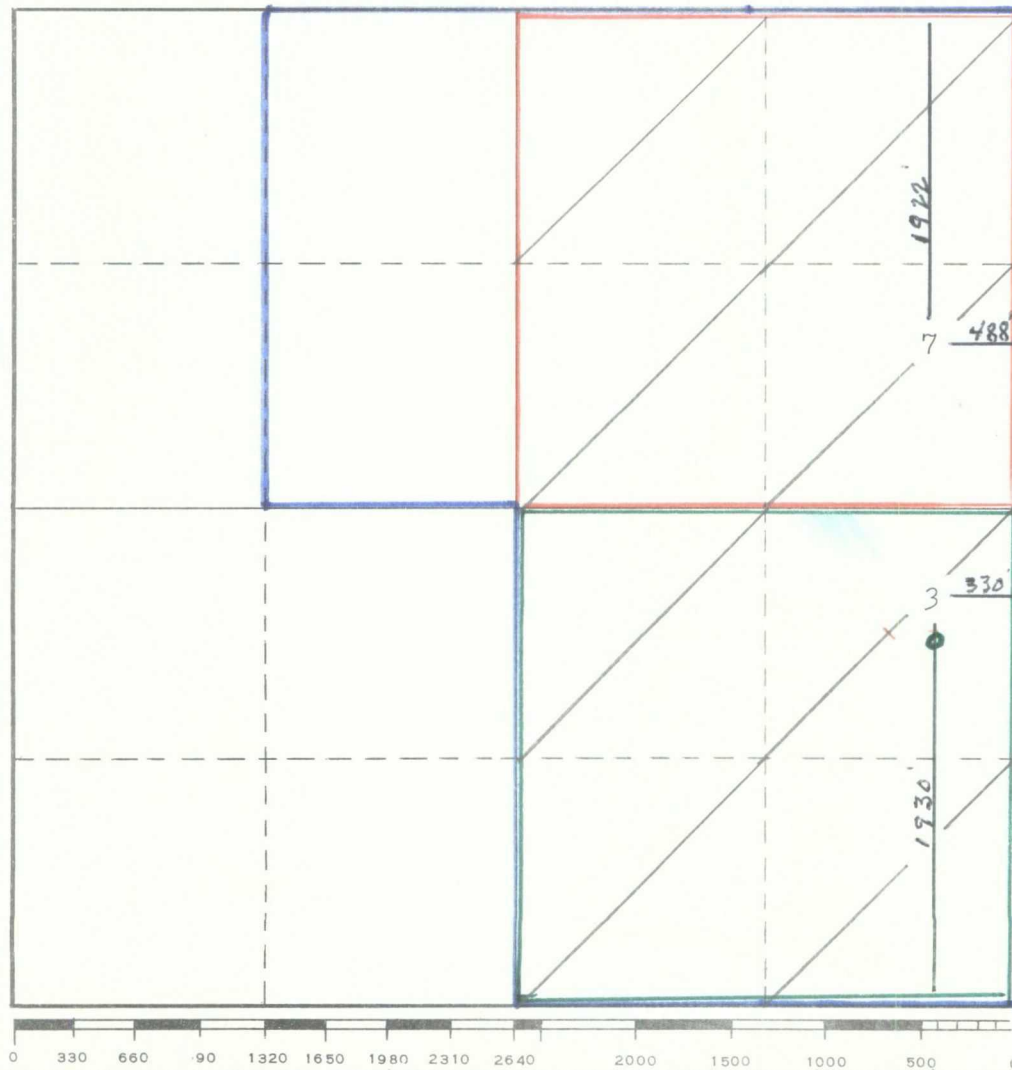
Operator Texas Pacific Oil Company, Inc.			Lease Winningham		Well No. 7
Unit Letter H	Section 30	Township 25-S	Range 37-E	County Lea	
Actual Footage Location of Well: 1922 feet from the North line and 488 feet from the East line					
Ground Level Elev. 3014.2	Producing Formation Yates		Pool Jalmat Gas		Dedicated Acreage: 160 Acres

1. Outline the acreage dedicated to the subject well by colored pencil or hachure marks on the plat below.
2. If more than one lease is dedicated to the well, outline each and identify the ownership thereof (both as to working interest and royalty).
3. If more than one lease of different ownership is dedicated to the well, have the interests of all owners been consolidated by communitization, unitization, force-pooling, etc?

☐ Yes ☐ No If answer is "yes," type of consolidation _____

If answer is "no," list the owners and tract descriptions which have actually been consolidated. (Use reverse side of this form if necessary.) _____

No allowable will be assigned to the well until all interests have been consolidated (by communitization, unitization, forced-pooling, or otherwise) or until a non-standard unit, eliminating such interests, has been approved by the Commission.



R - 37 - E

NO. J-568

WINNINGHAM

30

NO. J-568

KERR MCKEE

5505'

T
25
S

NO. J-584

C. L. JENKINS

WINNINGHAM

TEXAS PACIFIC OIL CO.

LANGLIE MATTIX
JALMAT GAS
JALMAT YATES

LEA CO., NEW MEXICO
SCALE: 1" = 1000'

NO. J-580

31

N. L. DYER

MOSS

3230'

Margie Rose

Gulman

Vasburg

Woolworth

Continental
"A"

Continental

3-B-19

2-B-19

4-B 19
Tenneco

2 Tenneco

5-C

Tenneco

V.H. Justis

B.M. Justis

B.M. Justis

Christmas

B.M. Justis

T.P.O.C.
J-568-B-K

Tenneco

Sholes Comm.

1-B-19

Sholes
U.S.

Willingham

C.E. Bates

T.P.O.C.
J-568-A-K

30

Tenneco

Humble

TD-9134

Kerr-McGee

TD-3505

7

Cont'l
"B"

T.P.O.C.
J-584-A-H

2

Amerada
Nays

TD-8576

Jenkins

Ralph Lowe

H.S. Moss
TD-3230

T.P.O.C.
J-580-A-M

31

Gulf
"B"

USA
Sholes

Ralph Lowe

2-A

Getty

Amerada

Coats

Dyer

T.P.O.C.

Cit-Ser.

T.P.O.C.