

Getty Oil Company

MID-CONTINENT EXPLORATION AND PRODUCTION DIVISION
~~NORTH AMERICAN EXPLORATION AND PRODUCTION DIVISION~~

NSP - 1014
Due Mar. 5

P. O. Box 249
Hobbs, New Mexico 88240

February 3, 1976

Rule 29 R-1670

New Mexico Oil Conservation Commission
P. O. Box 2088
Santa Fe, New Mexico 87501

Re: Reclassification from Oil to Gas
GETTY'S R. L. CLIFTON WELL NO. 2
BLINEBRY FIELD
LEA COUNTY, NEW MEXICO

Proration Unit SW/4 SW/4 Sec. 4
7225 - R 37E

Gentlemen:

The subject well has been reclassified from an Oil Well to a Gas Well. This lease contains one (1) Blinebry Well and one (1) Drinkard well which was dually completed by New Mexico Oil Conservation Commission Administrative Order MC-2094 dated February 28, 1974. On November 18, 1974, surface commingling was granted by New Mexico Oil Conservation Commission Administrative Order PC-495.

Getty Oil Company respectfully requests that this well be granted a non-standard gas proration unit in accordance with Rule 29 of Order No. R-1670 (Special Rules and Regulations for the Blinebry Gas Pool). We further request that the 40 acres, as outlined on the attached C-102, be allocated to this well.

The offset operators have been furnished with copies of this letter with attachments.

Very truly yours,
GETTY OIL COMPANY

C. L. Wade
C. L. Wade
Area Superintendent

HBS/bh

ATTACHMENTS

COPIES: Orig. & 2 CC - NMOCC - Santa Fe

- 1 - NMOCC - Hobbs
- 1 - Getty - Midland
- 1 - Skelly
- 1 - Gulf
- 1 - Texas Pacific
- 1 - Sohio
- 1 - Rodford Zachry

R. L. Clifton Well No. 2
located 810' FWL & 660' FSL
of Sec. 4.

CENTRAL UNIT

Somo
2A 137 1A 138
Penrose 08
State

Wiser Oil
4A 3A
McCormack
2A 1A 3-D
A.A. Downes (wo)
G.P. Sims

139 5
8 40
GULF (OPER)
150 (wo) 17
T07925 149
4 152 3 153
W.T. McCormack

141 (wo) 10 23 11 163
Dual (wo) E.O. Carson
Amerada
148 6 147
T08165
PB5622
154 4 155
(Dual) C. Hare

146 5 3
TWO 146
Mobil
Pan Amer
Dual
(P/B) 156
Blunk Corrigan

Phillips
lots 13-18, BIK5
12-31-92
6 1 (wo) 2
Marshall Uni
Pan Amer.
8 5
Eva Owen

Small Trs
Cowe
A.A. Harsan
Gulf
6 2 1 5
Mark Owen

Wiser Oil
107
A.A. Downes 106
G.P. Sims Dual
Ethel Sims & Sons
Lee Stebbins
Pan Amer.
120 127
132 133 134
Dual
J.W. Grizzell

195 Gulf 184 3
4 8
Stebbins
Sohio
113 114
Ch. P. Stebbins
Marathon
126 125 3
Raker
Wolfson
136
J.W. Grizzell

Wiser Oil
103 Dual
(Dual)
Gulf
3 115
(wo)
W.A. Pinewalt
Skelly
3 (wo) (P/B) 5
Atl. Rich.
Gerry
137 130
R.L. Clifton
Stitcher

8 Amerada
101 110 114
6
S
118
119
Anadarko
118 5 8
2
Gerry
137 130
R.L. Brunson

Sun
1 2 3
Pan Amer.
A 2
Exp. Owen
Cities Service
6 121 25 8
Dual R
Anadarko
6 3 8 7
R.L. Brunson

8 Gulf 5 6
Warren
Flatt
El Paso Nat
Dual 161
Mark Owen Sw
J.H. Hendrix
10 3 7
T
22
S 10

Texaco
151 A
Dual
Triple
156 3
(P/B)
Falby
179 Texaco
B 178
Triple 033706
180 181
Falby
U.S.

W.B. Yarborough
1 3 2
Pan Amer
1 B 2
Shell
M.R. Antweil
9 Shell
182 183
TIA 7424
Laura E. Grizzell

Tex. Pacific
2 3 1 15
TIA 032368
Elliott
Sohio
1 1
Elliott
1 1
1 4 Penrose
U.S.
175 13 8 9 173
Humble
J.L. Hendrix
SO. PENROSE SKELLY UNIT
15 185
17335 J.L. Greenwood

Mobil
13 14
Dual
A
10 163 12
Argo Dual
R.L. Brunson

(wo) 17
143 142 18 16 3
14 (wo) 141
Mobil
6 19 (P/B) 15
70 (wo) 4
"Argo" R.L. Brunson
Eaves
10 12 101 Amerada
170 15 7 168 11
Dual (wo) Parker
JAGOS

11 1
4 2
A B Baker

Adobe
B-934
Tex. Pacific
"Elliott"
Tex. Pacific
B-934
State
Sohio
TPCE
7D.4077
Elliott
Humble
12
M. Deck
Patsy

Sohio
191
State
Elliott
U.S.
Sohio
J. Hendrix
Tex. Pac.
Elliott
Morning
Glory
Campbell
Hedrick
P58
ARCO
Penrose
Moore &
Russell
SR
Rebel Oil
Christmas

Two States
6A (Simp Disc)
Gulf
12 Gulf
Cole NCT
Sohio
Christmas
"Gulf St"
10A Gulf
Cole NCT
Millard Deck
16
GETTY OIL COMPANY
R. L. CLIFTON LEASE
WELL NO. 2
LEA COUNTY, NEW MEXICO
Gul
Cole NCT
FS10
2 E. Cole State

Tex. Pacific
7 8 6 3 4
Anadarko
25
Sohio
1-B 2
10735306
27
Continental
1-B 4 2-B
Anadarko
Ambassador
1-C 6 B.C 7 3
E W Walden

Tex. Pacific
B
0357257
Dual
0357256
Sohio
1-B 2
10735306
27
Tex. Pac. Cont.
1-B 3
02
0354604
Cont. et al
092573
4 U.S. 5 6
Elliott

Penrose
M. Deck
SR
Millard Deck
SR
Gulf

Millard Deck
SR
Gulf

Cities Service
2

Getty
3

Continental
4 3

8 5 Amerada
3 6 4

NEW MEXICO OIL CONSERVATION COMMISSION
WELL LOCATION AND ACREAGE DEDICATION PLAT

Form C-102
Supersedes C-128
Effective 1-1-65

All distances must be from the outer boundaries of the Section.

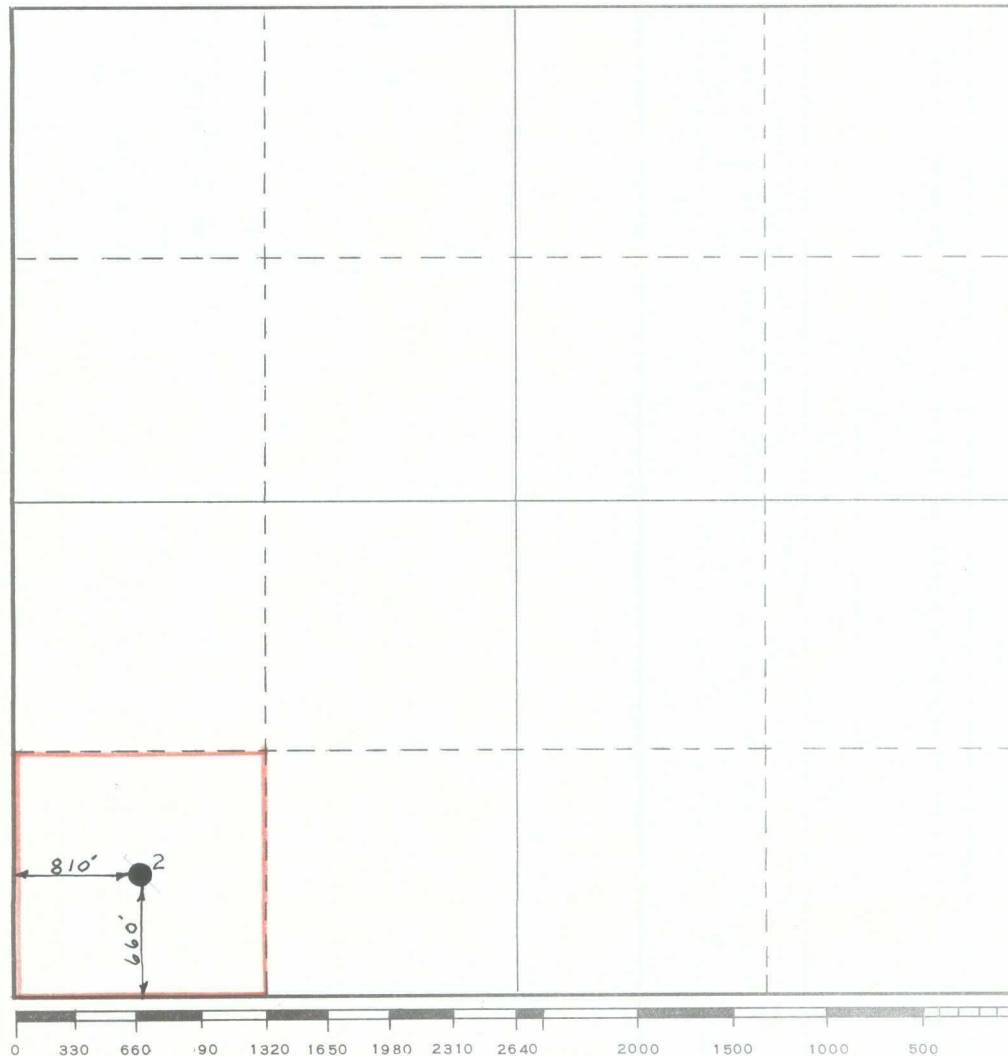
Operator GETTY OIL COMPANY		Lease R. L. CLIFTON		Well No. 2
Unit Letter M	Section 4	Township 22-S	Range 37-E	County LEA
Actual Footage Location of Well: 660 feet from the SOUTH line and 810 feet from the WEST line				
Ground Level Elev. 3442' D.F.	Producing Formation BLINEBRY	Pool BLINEBRY	Dedicated Acreage: 40 Acres	

1. Outline the acreage dedicated to the subject well by colored pencil or hachure marks on the plat below.
2. If more than one lease is dedicated to the well, outline each and identify the ownership thereof (both as to working interest and royalty).
3. If more than one lease of different ownership is dedicated to the well, have the interests of all owners been consolidated by communitization, unitization, force-pooling, etc?

☐ Yes ☐ No If answer is "yes," type of consolidation _____

If answer is "no," list the owners and tract descriptions which have actually been consolidated. (Use reverse side of this form if necessary.) _____

No allowable will be assigned to the well until all interests have been consolidated (by communitization, unitization, forced-pooling, or otherwise) or until a non-standard unit, eliminating such interests, has been approved by the Commission.



CERTIFICATION

I hereby certify that the information contained herein is true and complete to the best of my knowledge and belief.

Name
C. L. WADE *C. L. Wade*
Position
AREA SUPERINTENDENT
Company
GETTY OIL COMPANY
Date
FEBRUARY 3, 1976

I hereby certify that the well location shown on this plat was plotted from field notes of actual surveys made by me or under my supervision, and that the same is true and correct to the best of my knowledge and belief.

Date Surveyed
Registered Professional Engineer and/or Land Surveyor
Certificate No.

OIL CONSERVATION COMMISSION
Hobbs DISTRICT

OIL CONSERVATION COMMISSION
BOX 2088
SANTA FE, NEW MEXICO

DATE February 4, 1976

RE: Proposed MC _____
Proposed DHC _____
Proposed NSL _____
Proposed SWD _____
Proposed WFX _____
Proposed PMX _____
NSP X

Gentlemen:

I have examined the application dated _____
for the Getty Oil Co. R. L. Clifton #2-M 4-22-37
Operator Lease and Well No. Unit, S-T-R

and my recommendations are as follows:

O.K.---J.S.

Yours very truly,

Jerry Sexton

