

1R - 425-58

REPORTS

DATE:

12-5-08

~~12~~ 11

Vacuum Jet O-33

1R425-58

RECEIVED

MAR 25 2009

Environmental Bureau
Oil Conservation Division

CLOSURE

**RICE OPERATING COMPANY
JUNCTION BOX FINAL REPORT**

BOX LOCATION

SWD SYSTEM	JUNCTION	UNIT	SECTION	TOWNSHIP	RANGE	COUNTY	BOX DIMENSIONS - FEET		
Vacuum	Jct. O-33	O	33	17S	35E	Lea	Length	Width	Depth
							no box; system abandonment		

LAND TYPE: BLM _____ STATE X FEE LANDOWNER _____ OTHER _____

Depth to Groundwater 50 feet NMOCD SITE ASSESSMENT RANKING SCORE: 20

Date Started 9/28/2007 Date Completed 2/28/2008 OCD Witness no

Soil Excavated 5 cubic yards Excavation Length 5 Width 3 Depth 9 feet

Soil Disposed 0 cubic yards Offsite Facility n/a Location n/a

FINAL ANALYTICAL RESULTS: Sample Date 2/13/2008 Sample Depth 9 ft

TPH and Chloride laboratory test results completed by using an approved lab and testing procedures pursuant to NMOCD guidelines.

CHLORIDE FIELD TESTS

Sample Location	PID (field) ppm	GRO mg/kg	DRO mg/kg	Chloride mg/kg
SOURCE 9' GRAB	0.0	<10.0	<10.0	128

LOCATION	DEPTH	mg/kg
background	6"	149
vertical delineation trench at the junction (source)	5'	182
	6'	84
	7'	112
	8'	138
	9'	189

General Description of Remedial Action: This junction was eliminated during the Vacuum SWD system abandonment. After the former box was removed, an investigation was conducted using a backhoe to collect soil samples at regular intervals producing a 5x3x9-ft-deep excavation. Field data suggest the site is low in organic vapors and chloride concentrations are similar to that of the background. The deepest sample, 9 ft BGS, was sent to a commercial laboratory for analysis of chloride and TPH, which confirmed low concentrations. The excavated soil was returned to the excavation and clean, imported soil was used as a top cap and to contour the site to the surrounding area. On 2/28/2008, the site was seeded with a blend of native vegetation and is expected to return to a productive capacity at a normal rate.

enclosures: photos, lab results, PID field screening

I HEREBY CERTIFY THAT THE INFORMATION ABOVE IS TRUE AND COMPLETE TO THE BEST OF MY KNOWLEDGE AND BELIEF.

SITE SUPERVISOR Roy Rascon SIGNATURE not available COMPANY RICE OPERATING COMPANY

REPORT ASSEMBLED BY Katie Jones INITIAL KJ

PROJECT LEADER Larry Bruce Baker Jr. SIGNATURE Larry Bruce Baker Jr. DATE 12-5-08

Vacuum Jct. O-33

Unit O, Section 33, T17S, R35E



undisturbed junction box, facing north

11/4/2005



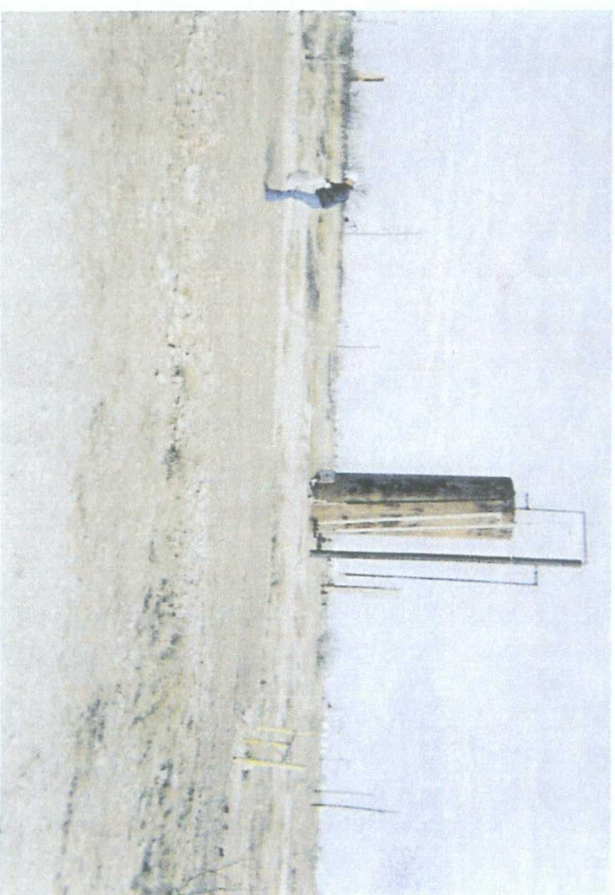
delineation trench at former junction site, facing east

2/13/2008



backfilled with clean, imported soil, facing west

2/28/2008



seeding backfilled site, facing north

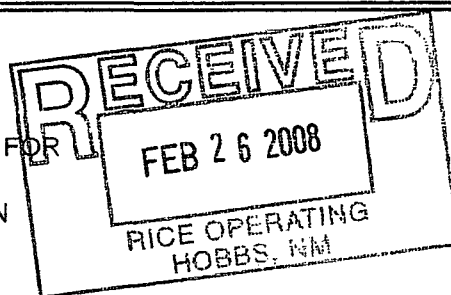
2/28/2008



ARDINAL LABORATORIES

PHONE (575) 393-2326 • 101 E. MARLAND • HOBBS, NM 88240

ANALYTICAL RESULTS FOR
RICE OPERATING CO.
ATTN: ROY R. RASCON
122 W. TAYLOR
HOBBS, NM 88240
FAX TO: (575) 397-1471



Receiving Date: 02/13/08
Reporting Date: 02/15/08
Project Owner: NOT GIVEN
Project Name: VAC. JCT. O-33
Project Location: NOT GIVEN

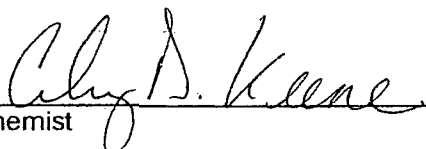
Sampling Date: 02/13/08
Sample Type: SOIL
Sample Condition: COOL & INTACT
Sample Received By: ML
Analyzed By: CK/KS

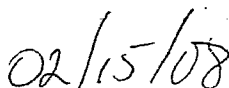
COPY

LAB NUMBER	SAMPLE ID	GRO (C ₆ -C ₁₀) (mg/kg)	DRO (>C ₁₀ -C ₂₈) (mg/kg)	CI* (mg/kg)
ANALYSIS DATE		02/13/08	02/13/08	02/13/08
H14252-1	VERT. @ SOURCE @ 9' BGS	<10.0	<10.0	128
Quality Control		528	454	500
True Value QC		500	500	500
% Recovery		106	90.8	100
Relative Percent Difference		3.9	8.2	<0.1

METHODS: TPH GRO & DRO: EPA SW-846 8015 M; CI: Std. Methods 4500-CIB

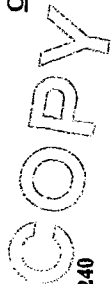
*Analysis performed on a 1:4 w:v aqueous extract.


Chemist


Date

H14252TCL RICE

PLEASE NOTE: Liability and Damages. Cardinal's liability and client's exclusive remedy for any claim arising, whether based in contract or tort, shall be limited to the amount paid by client for analyses. All claims, including those for negligence and any other cause whatsoever shall be deemed waived unless made in writing and received by Cardinal within thirty (30) days after completion of the applicable service. In no event shall Cardinal be liable for incidental or consequential damages, including, without limitation, business interruptions, loss of use, or loss of profits incurred by client, its subsidiaries, affiliates or successors arising out of or related to the performance of services hereunder by Cardinal, regardless of whether such claim is based upon any of the above-stated reasons or otherwise. Results relate only to the samples identified above. This report shall not be reproduced except in full with written approval of Cardinal Laboratories.



CHAIN-OF-CUSTODY AND ANALYSIS REQUEST

ARDINAL LABORATORIES

2111 Beechwood, Abilene, TX 79603 101 East Marland, Hobbs, NM 88240
(325) 673-7001 FAX (325) 673-7020 (505) 393-2326 FAX (505) 393-2476

ANALYSIS REQUEST									
BILL TO									
<div> <div>Company Name: RICE OPERATING CO.</div> <div> <div>P.O. #:</div> <div>Company:</div> <div>Attn:</div> <div>Address:</div> <div>City:</div> <div>State:</div> <div>Zip:</div> <div>Phone #:</div> <div>Fax #:</div> </div> </div>									
<div> <div>Project Manager: ROY R. RASCON</div> <div> <div>Address: 122 WEST TAYLOR</div> <div>City: HOBBS</div> <div>State: NM</div> <div>Zip: 88240</div> <div>Phone #: (505) 393-9174</div> <div>Fax #: (505) 397-1471</div> </div> </div>									
<div> <div>Project Name: VAC JCT O-33</div> <div> <div>Project Location:</div> <div>Project Owner:</div> </div> </div>									
<div> <div>Sampler Name: ROY R. RASCON</div> <div> <div>Matrix:</div> <div>Preserv:</div> <div>Sampling:</div> </div> </div>									
<div> <div>FOR LAB USE ONLY</div> <div>LAB ID #</div> <div>VERT @ SOURCE @ 9' bgs</div> <div>DATE</div> <div>TIME</div> <div>CL</div> <div>BTEX</div> </div>									
<div> <div>114252-1</div> <div>VERT @ SOURCE @ 9' bgs</div> <div>DATE</div> <div>TIME</div> <div>CL</div> <div>BTEX</div> </div>									
<div> <div>114252-2</div> <div>VERT @ SOURCE @ 9' bgs</div> <div>DATE</div> <div>TIME</div> <div>CL</div> <div>BTEX</div> </div>									
<div> <div>114252-3</div> <div>VERT @ SOURCE @ 9' bgs</div> <div>DATE</div> <div>TIME</div> <div>CL</div> <div>BTEX</div> </div>									
<div> <div>114252-4</div> <div>VERT @ SOURCE @ 9' bgs</div> <div>DATE</div> <div>TIME</div> <div>CL</div> <div>BTEX</div> </div>									
<div> <div>114252-5</div> <div>VERT @ SOURCE @ 9' bgs</div> <div>DATE</div> <div>TIME</div> <div>CL</div> <div>BTEX</div> </div>									
<div> <div>114252-6</div> <div>VERT @ SOURCE @ 9' bgs</div> <div>DATE</div> <div>TIME</div> <div>CL</div> <div>BTEX</div> </div>									
<div> <div>114252-7</div> <div>VERT @ SOURCE @ 9' bgs</div> <div>DATE</div> <div>TIME</div> <div>CL</div> <div>BTEX</div> </div>									
<div> <div>114252-8</div> <div>VERT @ SOURCE @ 9' bgs</div> <div>DATE</div> <div>TIME</div> <div>CL</div> <div>BTEX</div> </div>									
<div> <div>114252-9</div> <div>VERT @ SOURCE @ 9' bgs</div> <div>DATE</div> <div>TIME</div> <div>CL</div> <div>BTEX</div> </div>									
<div> <div>114252-10</div> <div>VERT @ SOURCE @ 9' bgs</div> <div>DATE</div> <div>TIME</div> <div>CL</div> <div>BTEX</div> </div>									
<div> <div>114252-11</div> <div>VERT @ SOURCE @ 9' bgs</div> <div>DATE</div> <div>TIME</div> <div>CL</div> <div>BTEX</div> </div>									
<div> <div>114252-12</div> <div>VERT @ SOURCE @ 9' bgs</div> <div>DATE</div> <div>TIME</div> <div>CL</div> <div>BTEX</div> </div>									
<div> <div>114252-13</div> <div>VERT @ SOURCE @ 9' bgs</div> <div>DATE</div> <div>TIME</div> <div>CL</div> <div>BTEX</div> </div>									
<div> <div>114252-14</div> <div>VERT @ SOURCE @ 9' bgs</div> <div>DATE</div> <div>TIME</div> <div>CL</div> <div>BTEX</div> </div>									
<div> <div>114252-15</div> <div>VERT @ SOURCE @ 9' bgs</div> <div>DATE</div> <div>TIME</div> <div>CL</div> <div>BTEX</div> </div>									
<div> <div>114252-16</div> <div>VERT @ SOURCE @ 9' bgs</div> <div>DATE</div> <div>TIME</div> <div>CL</div> <div>BTEX</div> </div>									
<div> <div>114252-17</div> <div>VERT @ SOURCE @ 9' bgs</div> <div>DATE</div> <div>TIME</div> <div>CL</div> <div>BTEX</div> </div>									
<div> <div>114252-18</div> <div>VERT @ SOURCE @ 9' bgs</div> <div>DATE</div> <div>TIME</div> <div>CL</div> <div>BTEX</div> </div>									
<div> <div>114252-19</div> <div>VERT @ SOURCE @ 9' bgs</div> <div>DATE</div> <div>TIME</div> <div>CL</div> <div>BTEX</div> </div>									
<div> <div>114252-20</div> <div>VERT @ SOURCE @ 9' bgs</div> <div>DATE</div> <div>TIME</div> <div>CL</div> <div>BTEX</div> </div>									
<div> <div>114252-21</div> <div>VERT @ SOURCE @ 9' bgs</div> <div>DATE</div> <div>TIME</div> <div>CL</div> <div>BTEX</div> </div>									
<div> <div>114252-22</div> <div>VERT @ SOURCE @ 9' bgs</div> <div>DATE</div> <div>TIME</div> <div>CL</div> <div>BTEX</div> </div>									
<div> <div>114252-23</div> <div>VERT @ SOURCE @ 9' bgs</div> <div>DATE</div> <div>TIME</div> <div>CL</div> <div>BTEX</div> </div>									
<div> <div>114252-24</div> <div>VERT @ SOURCE @ 9' bgs</div> <div>DATE</div> <div>TIME</div> <div>CL</div> <div>BTEX</div> </div>									
<div> <div>114252-25</div> <div>VERT @ SOURCE @ 9' bgs</div> <div>DATE</div> <div>TIME</div> <div>CL</div> <div>BTEX</div> </div>									
<div> <div>114252-26</div> <div>VERT @ SOURCE @ 9' bgs</div> <div>DATE</div> <div>TIME</div> <div>CL</div> <div>BTEX</div> </div>									
<div> <div>114252-27</div> <div>VERT @ SOURCE @ 9' bgs</div> <div>DATE</div> <div>TIME</div> <div>CL</div> <div>BTEX</div> </div>									
<div> <div>114252-28</div> <div>VERT @ SOURCE @ 9' bgs</div> <div>DATE</div> <div>TIME</div> <div>CL</div> <div>BTEX</div> </div>									
<div> <div>114252-29</div> <div>VERT @ SOURCE @ 9' bgs</div> <div>DATE</div> <div>TIME</div> <div>CL</div> <div>BTEX</div> </div>									
<div> <div>114252-30</div> <div>VERT @ SOURCE @ 9' bgs</div> <div>DATE</div> <div>TIME</div> <div>CL</div> <div>BTEX</div> </div>									
<div> <div>114252-31</div> <div>VERT @ SOURCE @ 9' bgs</div> <div>DATE</div> <div>TIME</div> <div>CL</div> <div>BTEX</div> </div>									
<div> <div>114252-32</div> <div>VERT @ SOURCE @ 9' bgs</div> <div>DATE</div> <div>TIME</div> <div>CL</div> <div>BTEX</div> </div>									
<div> <div>114252-33</div> <div>VERT @ SOURCE @ 9' bgs</div> <div>DATE</div> <div>TIME</div> <div>CL</div> <div>BTEX</div> </div>									
<div> <div>114252-34</div> <div>VERT @ SOURCE @ 9' bgs</div> <div>DATE</div> <div>TIME</div> <div>CL</div> <div>BTEX</div> </div>									
<div> <div>114252-35</div> <div>VERT @ SOURCE @ 9' bgs</div> <div>DATE</div> <div>TIME</div> <div>CL</div> <div>BTEX</div> </div>									
<div> <div>114252-36</div> <div>VERT @ SOURCE @ 9' bgs</div> <div>DATE</div> <div>TIME</div> <div>CL</div> <div>BTEX</div> </div>									
<div> <div>114252-37</div> <div>VERT @ SOURCE @ 9' bgs</div> <div>DATE</div> <div>TIME</div> <div>CL</div> <div>BTEX</div> </div>									
<div> <div>114252-38</div> <div>VERT @ SOURCE @ 9' bgs</div> <div>DATE</div> <div>TIME</div> <div>CL</div> <div>BTEX</div> </div>									
<div> <div>114252-39</div> <div>VERT @ SOURCE @ 9' bgs</div> <div>DATE</div> <div>TIME</div> <div>CL</div> <div>BTEX</div> </div>									
<div> <div>114252-40</div> <div>VERT @ SOURCE @ 9' bgs</div> <div>DATE</div> <div>TIME</div> <div>CL</div> <div>BTEX</div> </div>									
<div> <div>114252-41</div> <div>VERT @ SOURCE @ 9' bgs</div> <div>DATE</div> <div>TIME</div> <div>CL</div> <div>BTEX</div> </div>									
<div> <div>114252-42</div> <div>VERT @ SOURCE @ 9' bgs</div> <div>DATE</div> <div>TIME</div> <div>CL</div> <div>BTEX</div> </div>									
<div> <div>114252-43</div> <div>VERT @ SOURCE @ 9' bgs</div> <div>DATE</div> <div>TIME</div> <div>CL</div> <div>BTEX</div> </div>									

[†] Cardinal cannot accept verbal changes. Please fax written changes to 505-393-2476

RICE OPERATING COMPANY

122 West Taylor Hobbs, NM 88240

PHONE: (505) 393-9174 FAX: (505) 397-1471

PID METER CALIBRATION & FIELD REPORT FORM

COPY

CK.	
MODEL	X
NO.	

MODEL: PGM 7600

SERIAL NO: 110-013676

MODEL: PGM 7600

SERIAL NO: 110-013744

MODEL: PGM 7600

SERIAL NO: 110-012383

MODEL: PGM 7600

SERIAL NO: 110-012920

GAS COMPOSITION: ISOBUTYLENE 100PPM / AIR: BALANCE

LOT NO : 07-3353	EXPIRATION DATE: 5-16-09
FILL DATE: 11-16-07	METER READING ACCURACY: 100.0

ACCURACY : +/- 2%

SYSTEM	JUNCTION	UNIT	SECTION	TOWN SHIP	RANGE
VAC	O-33	O	33	17S	35E

SAMPLE ID	PID	SAMPLE ID	PID
VERT @ SOURCE @ 1'			
2'			
3'			
4'			
5'	0		
6'	0		
7'	0		
8'	0		
9'	0		
10'			
11'			
12'			

I verify that I have calibrated the above instrument in accordance to the manufacture operation manual.

SIGNATURE:

Ray R. Lascon

DATE: 2-13-08