

ABOVE THIS LINE FOR DIVISION USE ONLY

NEW MEXICO OIL CONSERVATION DIVISION
 - Engineering Bureau -
 1220 South St. Francis Drive, Santa Fe, NM 87505



GOG
6189

ADMINISTRATIVE APPLICATION CHECKLIST

Miranda Fed #24

THIS CHECKLIST IS MANDATORY FOR ALL ADMINISTRATIVE APPLICATIONS FOR EXCEPTIONS TO DIVISION RULES AND REGULATIONS WHICH REQUIRE PROCESSING AT THE DIVISION LEVEL IN SANTA FE

Application Acronyms:

- [NSL-Non-Standard Location] [NSP-Non-Standard Proration Unit] [SD-Simultaneous Dedication]**
- [DHC-Downhole Commingling] [CTB-Lease Commingling] [PLC-Pool/Lease Commingling]**
- [PC-Pool Commingling] [OLS - Off-Lease Storage] [OLM-Off-Lease Measurement]**
- [WFX-Waterflood Expansion] [PMX-Pressure Maintenance Expansion]**
- [SWD-Salt Water Disposal] [IPI-Injection Pressure Increase]**
- [EOR-Qualified Enhanced Oil Recovery Certification] [PPR-Positive Production Response]**

[1] **TYPE OF APPLICATION** - Check Those Which Apply for [A]

- [A] Location - Spacing Unit - Simultaneous Dedication
 NSL NSP SD

Check One Only for [B] or [C]

- [B] Commingling - Storage - Measurement
 DHC CTB PLC PC OLS OLM

- [C] Injection - Disposal - Pressure Increase - Enhanced Oil Recovery
 WFX PMX SWD IPI EOR PPR

[D] Other: Specify _____

[2] **NOTIFICATION REQUIRED TO:** - Check Those Which Apply, or Does Not Apply

INTEREST ARE THE SAME

- [A] Working, Royalty or Overriding Royalty Interest Owners
- [B] Offset Operators, Leaseholders or Surface Owner
- [C] Application is One Which Requires Published Legal Notice
- [D] Notification and/or Concurrent Approval by BLM or SLO
U.S. Bureau of Land Management - Commissioner of Public Lands, State Land Office
- [E] For all of the above, Proof of Notification or Publication is Attached, and/or,
- [F] Waivers are Attached

[3] **SUBMIT ACCURATE AND COMPLETE INFORMATION REQUIRED TO PROCESS THE TYPE OF APPLICATION INDICATED ABOVE.**

[4] **CERTIFICATION:** I hereby certify that the information submitted with this application for administrative approval is **accurate** and **complete** to the best of my knowledge. I also understand that **no action** will be taken on this application until the required information and notifications are submitted to the Division.

Note: Statement must be completed by an individual with managerial and/or supervisory capacity.

<u>ROBYN M. ODOM</u> Print or Type Name	 Signature	<u>REGULATORY ANALYST</u> Title	<u>4/22/10</u> Date
<u>(432) 685-4385</u> Phone Number	<u>rodom@conchoresources.com</u> E-mail Address		

Miranda Federal #24

Eddy County, NM

COG proposes to drill a Vertical, North ½, 40 acre spacing
Loco Hills; Glorieta-Yeso oil well
TD of approximately 6000'

Non-Standard Location:

1140' FNL & 330' FEL Sec 9, T17S, R30E, Unit A

This well had to be drilled at a non-standard location due to sand dunes.

The plan for this well is to complete it in the Yeso formation.

We won't know the exact perms until we drill & log it, but it will be very similar to the Electra Federal #10 which was recently drilled in January 2007 and is located 765' FSL 2310' FWL, Section 10, T17S, R30E, Unit N.

The Electra Federal #10 completion divided the Yeso up into 3 perf/stimulation intervals. Electra Federal #10 has perms from: 4920' – 5848.5' overall, with the following breakdown:

1st interval: 5567' – 5848.5',
acidized w/ 2500 gals,
frac'd w/ 95,103 gals gel, 8321# LiteProp, & 85,970# 16/30 sand.

2nd interval: 5192.5' – 5475.5',
acidized w/ 2500 gals,
frac'd w/ 97,107 gals gel, 8215# LiteProp, & 87,106# 16/30 sand.

3rd interval: 4920' – 5107',
acidized w/ 2500 gals,
frac'd w/ 94,099 gals gel, 8448# LiteProp, & 87,526# 16/30 sand.

Attachment 1

Plat & Map

Attachment 2

Map & legend of offset wells.

Attachment 3

Updated land plat showing COG Operating LLC owns the offset acreage.
The acreage we are encroaching on is the SE/4 NE/4 of Section 9 and the SW/4
NW/4 of Section 10.

Interests are the same.

COG Operating LLC respectfully requests permission to have this NSL approved.

District I
1625 N. French Dr., Hobbs, NM 88240

District II
1301 W. Grand Avenue, Artesia, NM 88210

District III
1000 Rio Brazos Rd., Aztec, NM 87410

District IV
1220 S. St. Francis Dr., Santa Fe, NM 87505

State of New Mexico
Energy, Minerals & Natural Resources Department
OIL CONSERVATION DIVISION
1220 South St. Frances Dr.
Santa Fe, NM 87505

Form C-102
Revised October 15, 2009
Submit one copy to appropriate
District Office

AMENDED REPORT

WELL LOCATION AND ACREAGE DEDICATION PLAT

1 API Number 30-015-	2 Pool Code 96718	3 Pool Name LOCO HILLS; GLORIETA-YESO
4 Property Code 37868	5 Property Name MIRANDA FEDERAL	
6 Well Number 24	7 OGRID No. 229137	
8 Operator Name COG OPERATING LLC		9 Elevation 3702.1

10 Surface Location

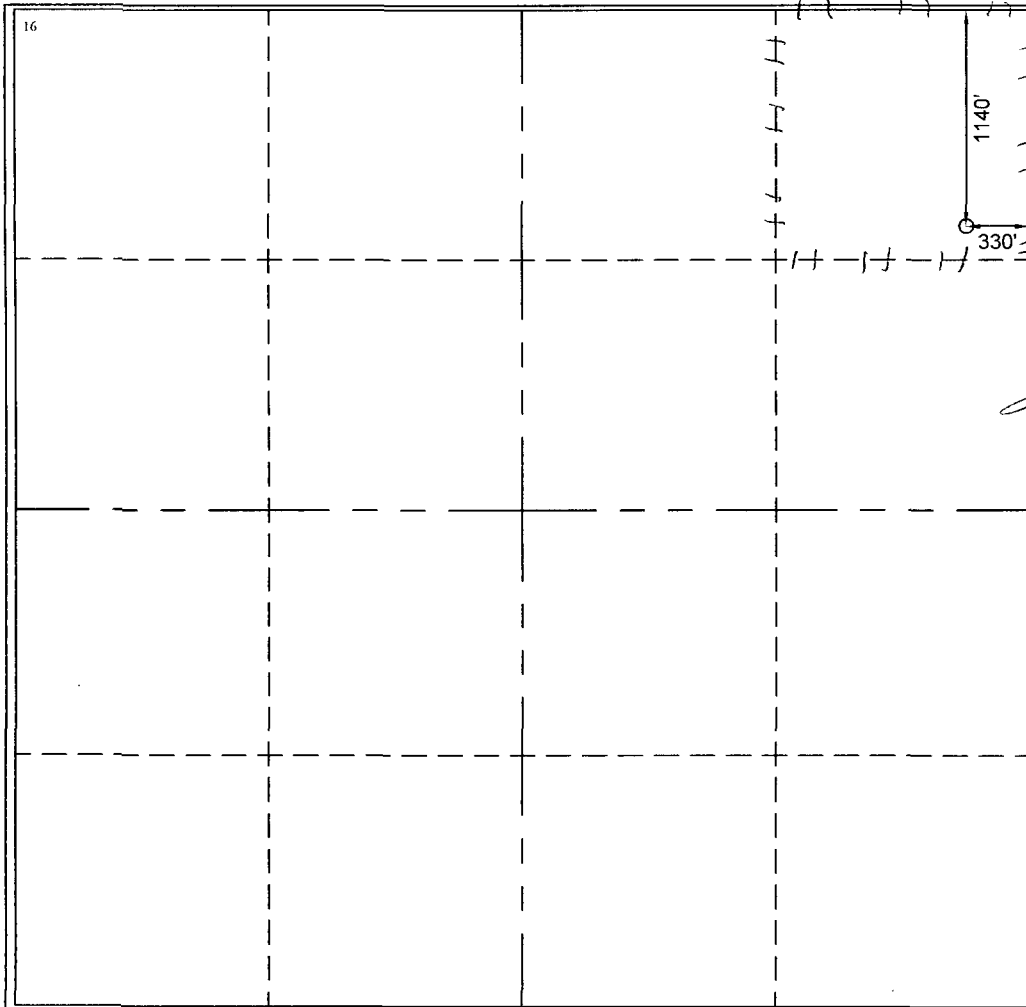
UL or lot	Section	Township	Range	Lot Idn	Feet from the	North/South line	Feet from the	East/West line	County
A	9	17 S	30 E		1140	NORTH	330	EAST	EDDY

11 Bottom Hole Location If Different From Surface

UL or lot	Section	Township	Range	Lot Idn	Feet from the	North/South line	Feet from the	East/West line	County

12 Dedicated Acres 40	13 Joint or Infill	14 Consolidation Code	15 Order No.
---------------------------------	--------------------	-----------------------	--------------

No allowable will be assigned to this completion until all interests have been consolidated or a non-standard unit has been approved by the division.



17 OPERATOR CERTIFICATION
I hereby certify that the information contained herein is true and complete to the best of my knowledge and belief, and that this organization either owns a working interest or unleased mineral interest in the land including the proposed bottom hole location or has a right to drill this well at this location pursuant to a contract with an owner of such a mineral or working interest, or to a voluntary pooling agreement or a compulsory pooling order heretofore enter by the division.

Robyn Odom 4/16/2010
Signature Date

Robyn Odom
Printed Name

18 SURVEYOR CERTIFICATION
I hereby certify that the well location shown on this plat was plotted from field notes of actual surveys made by me or under my supervision, and that the same is true and correct to the best of my belief.

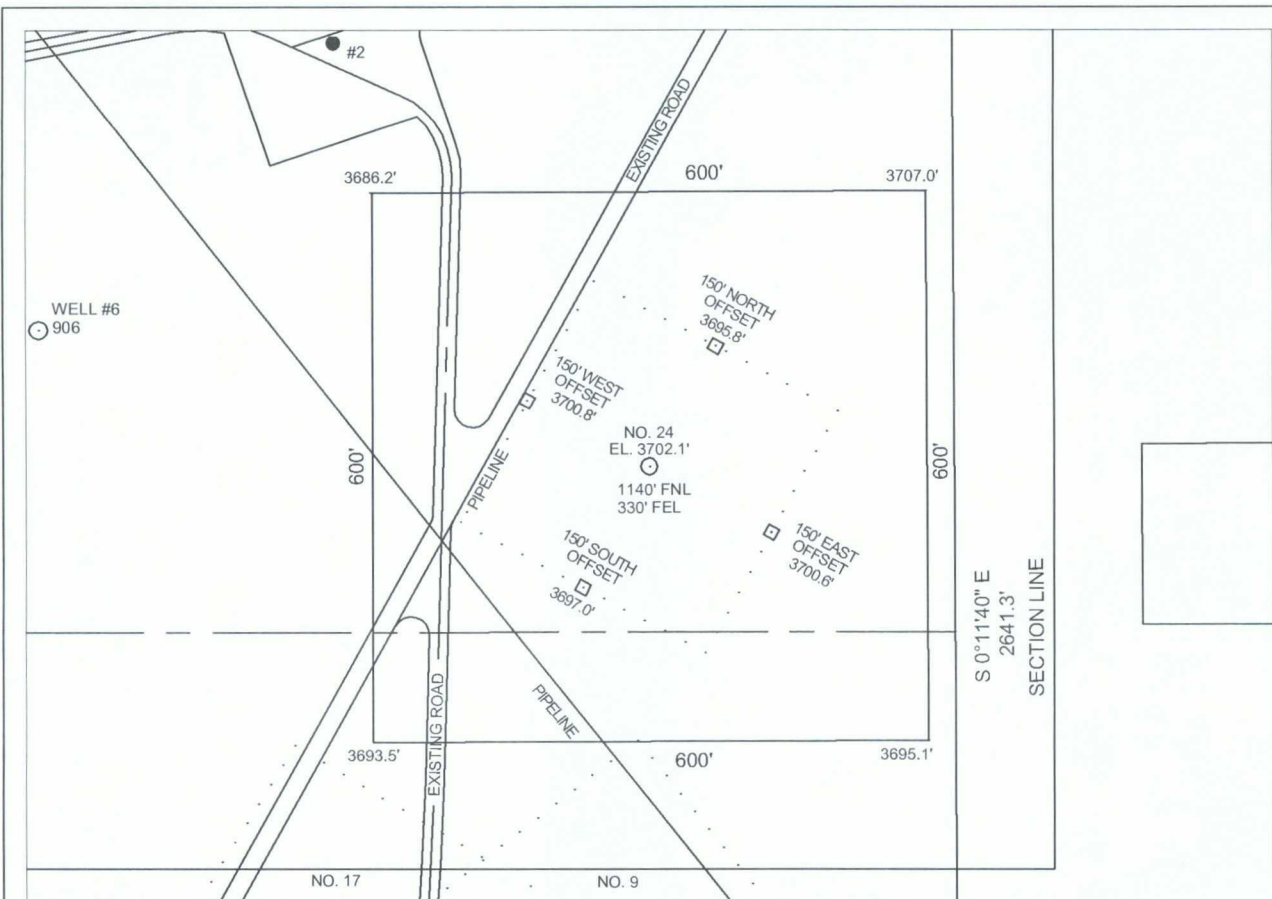
03/10/2010
Date of Survey

Signature and Seal of Professional Surveyor

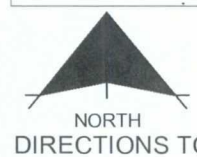


NAD27 GEOGRAPHIC COORDINATES		NAD27 SPC - NM EAST	
LAT: 32.85304	LON: -103.96892	X = 611907.1	Y = 674239.3

Bruce R. Pennell
Certificate Number 9062




NAD27 GEOGRAPHIC COORDINATES		NAD83 GEOGRAPHIC COORDINATES	
LAT: 32.85304	LON: -103.96892	LAT: 32°51'11.353" N.	LON: 103°58'09.954" W.



DIRECTIONS TO LOCATION



1. FROM THE INTERSECTION OF U.S. HIGHWAY 82 AND CR 217 (HAGGERMAN CUTOFF RD.) AT LOCO HILLS, NEW MEXICO, 20.6 MILES EAST OF ARTESIA, NEW MEXICO:
2. THEN NORTH ON CR 217, 1.81 MILES TO A LEASE ROAD ON THE RIGHT;
3. THEN EAST ON THE LEASE ROAD, 0.48 MILES TO THE INTERSECTION OF CR 218 (GOAT ROPERS RD.);
4. THEN NORTH ON CR 218, AT 0.27 MILES PASS THE SOUTH LINE OF THE MIRANDA FEDERAL LEASE, 0.64 MILES IN ALL TO A "T" INTERSECTION OF A LEASE ROAD TO THE RIGHT.
5. THEN EAST ON THE EXISTING LEASE ROAD, AT 0.11 MILES PASS ON THE RIGHT, THE LEASE ROAD TO THE PROPOSED NO. 22, ON THE LEFT THE EXISTING / PROPOSED ROADS TO THE NO. 21, NO. 11, AND NO. 23;
6. CONTINUING 0.37 MILES IN ALL TO THE NORTHWEST CORNER OF THE WELL SITE ENTRANCE FOR THE NO. 2 WELL;
7. THEN DEFLECTING TO THE RIGHT, HEADING FOR THE SEc OF THE WELL SITE, AT 230 FT. PASS THE SOUTHEAST CORNER OF THE NO. 2 WELL SITE, 0.13 MILES IN ALL TO AN "X" INTERSECTION OF A PIPELINE / ROAD AND THE WEST CORNER OF THE PROPOSED NO. 24 WELL SITE.

 <p>A. E. FULLER & ASSOCIATES LAND SURVEYORS AL FULLER Cell - (432) 559-6718 Email - al@aefuller.com Fax: (817) 594-8437 3600 W. Baumann Midland, TX 79703</p>	<p>COG OPERATING LLC MIRANDA FEDERAL NO. 24 SECTION 9 - TOWNSHIP 17 S - RANGE 30 E EDDY COUNTY, NM N 88 E - 25.2 MILES FROM ARTESIA, NM</p> <p>DATE: 03/10/2010</p> <p>USGS QUAD LOCO HILLS</p>
www.aefuller.com	

Offset Wells to Miranda Federal #24

API#	Operator	Lease	Well#	County	Legal	Field Name	Reservoir Name	Total Depth	Well Type	Well Status	First Prod.	Last Prod.
30-015-20537	CBS OPERATING CORP	LOCO HILLS B FEDERAL	001	EDDY	S:9, T:17S, R:30E	GRAYBURG JACKSON	SR-Q-G-SA	2,872	PO	Injection Well	Jan 1993	Jan 2010
30-015-20617	CBS OPERATING CORP	LOCO HILLS B FEDERAL	002	EDDY	S:9, T:17S, R:30E	GRAYBURG JACKSON	SR-Q-G-SA	2,878	O	Active	Jan 1979	Apr 2005
30-015-20617	CBS OPERATING CORP	LOCO HILLS B FEDERAL	002	EDDY	S:9, T:17S, R:30E	GRAYBURG JKSN SR-Q-G-SA(DO NOT USE)		2,878	O	Active	Jun 1972	Dec 1977
30-015-20672	CBS OPERATING CORP	LOCO HILLS B FEDERAL	005	EDDY	S:9, T:17S, R:30E	GRAYBURG JACKSON	SR-Q-G-SA	2,870	PI	Flowing	Jan 1979	Dec 1982
30-015-20672	CBS OPERATING CORP	LOCO HILLS B FEDERAL	005	EDDY	S:9, T:17S, R:30E	GRAYBURG JKSN SR-Q-G-SA(DO NOT USE)		2,870	PI	Flowing	Jul 1972	Dec 1977
30-015-20673	CBS OPERATING CORP	LOCO HILLS B FEDERAL	006	EDDY	S:9, T:17S, R:30E	GRAYBURG JACKSON	SR-Q-G-SA	2,880	O	Active	Jan 1979	Jan 2010
30-015-20673	CBS OPERATING CORP	LOCO HILLS B FEDERAL	006	EDDY	S:9, T:17S, R:30E	GRAYBURG JKSN SR-Q-G-SA(DO NOT USE)		2,880	O	Active	Jul 1972	Dec 1977
30-015-20674	CBS OPERATING CORP	LOCO HILLS B FEDERAL	007	EDDY	S:9, T:17S, R:30E	GRAYBURG JACKSON	SR-Q-G-SA		G	Flowing	Jan 1979	Dec 1982
30-015-20674	CBS OPERATING CORP	LOCO HILLS B FEDERAL	007	EDDY	S:9, T:17S, R:30E	GRAYBURG JKSN SR-Q-G-SA(DO NOT USE)			G	Flowing	Jul 1972	Dec 1977
30-015-20675	CBS OPERATING CORP	LOCO HILLS B FEDERAL	008	EDDY	S:9, T:17S, R:30E	GRAYBURG JKSN SR-Q-G-SA(DO NOT USE)			O	Shut-in	Jan 1973	Dec 1977
30-015-20675	CBS OPERATING CORP	LOCO HILLS B FEDERAL	008	EDDY	S:9, T:17S, R:30E	GRAYBURG JACKSON	SR-Q-G-SA		O	Shut-in	Jan 1979	Jan 2010
30-015-20851	SEELY OIL CO	ARCO FEDERAL	001	EDDY	S:9, T:17S, R:30E	SQUARE LAKE	GRAYBURG-SAN ANDRES	2,880	O	Active	Nov 1973	Jan 2010
30-015-20951	SEELY OIL CO	ARCO FEDERAL	002	EDDY	S:9, T:17S, R:30E	SQUARE LAKE	GRAYBURG-SAN ANDRES	0	O	Pumping	Jan 1975	Jan 2010
30-015-21221	SEELY OIL CO	ARCO FEDERAL	003	EDDY	S:9, T:17S, R:30E	SQUARE LAKE	GRAYBURG-SAN ANDRES	0	O	Pumping	Jan 1975	Jan 2010
30-015-21276	SEELY OIL CO	ARCO FEDERAL	004	EDDY	S:9, T:17S, R:30E	SQUARE LAKE	GRAYBURG-SAN ANDRES	0	O	Pumping	Jan 1975	Jan 2010
30-015-21436	SEELY OIL CO	ARCO FEDERAL	005	EDDY	S:9, T:17S, R:30E	SQUARE LAKE	GRAYBURG-SAN ANDRES	0	O	Pumping	Feb 1975	Jan 2010
30-015-21437	SEELY OIL CO	ARCO FEDERAL	006	EDDY	S:9, T:17S, R:30E	SQUARE LAKE	GRAYBURG-SAN ANDRES	0	O	Pumping	Feb 1975	Jan 2010
		PARKE G			S:9, T:17S,							

30-015-21493	SEELY OIL CO	FEDERAL	001	EDDY	R:30E	SQUARE LAKE	GRAYBURG-SAN ANDRES	0	O	Pumping	Apr 1975	Jan 2010
30-015-25110	CBS OPERATING CORP	LOCO HILLS B FEDERAL	009	EDDY	S:9, T:17S, R:30E	GRAYBURG JACKSON	SR-Q-G-SA	3,040	PO	Shut-in	Jan 1993	Jan 2010
30-015-20735		HOLDER CB NCT B FEDERAL	003	EDDY	S:9, T:17S, R:30E	GRAYBURG JACKSON	SR-Q-G-SA	3,600	O	Active		
30-015-04114		HOLDER CB NCT B FEDERAL	001	EDDY	S:9, T:17S, R:30E	GRAYBURG JACKSON	SR-Q-G-SA		G	Active	Jan 1988	Dec 1993
30-015-34915	GRUY PETROLEUM MANAGEMENT CO.	STEWART 9 FEDERAL COM	001	EDDY	S:9, T:17S, R:30E	LOCO HILLS	MORROW (GAS)	11,650	PG	Active Permit		
30-015-35823	GRUY PETROLEUM MANAGEMENT CO.	STEWART 9 FEDERAL COM	1	EDDY	S:9, T:17S, R:30E	LOCO HILLS	MORROW (GAS)	11,650	PG	Active Permit		
30-015-34707	COG OPERATING LLC	POLARIS B FEDERAL	5	EDDY	S:9, T:17S, R:30E	LOCO HILLS; GLORIETA-YESO		5,985	O	Active Permit	Nov 2006	Nov 2006
30-015-35393	COG OPERATING LLC	POLARIS B FEDERAL	8	EDDY	S:9, T:17S, R:30E	LOCO HILLS	PADDOCK	5,970	O	Active	Sep 2007	Jan 2010
30-015-35394	COG OPERATING LLC	POLARIS B FEDERAL	9	EDDY	S:9, T:17S, R:30E	LOCO HILLS	PADDOCK	6,007	O	Active Permit	Nov 2007	Jan 2010
30-015-35395	COG OPERATING LLC	POLARIS B FEDERAL	10	EDDY	S:9, T:17S, R:30E	LOCO HILLS	PADDOCK	6,000	O	Active	May 2008	Jan 2010
30-015-35396	COG OPERATING LLC	POLARIS B FEDERAL	11	EDDY	S:9, T:17S, R:30E	LOCO HILLS	PADDOCK	6,015	O	Active	Nov 2007	Jan 2010
30-015-35397	COG OPERATING LLC	POLARIS B FEDERAL	12	EDDY	S:9, T:17S, R:30E	LOCO HILLS; GLORETA-YESO (GAS)	GAS	5,920	O	Active	Nov 2007	Nov 2007
30-015-34707	COG OPERATING LLC	POLARIS B FEDERAL	5	EDDY	S:9, T:17S, R:30E	LOCO HILLS	PADDOCK	5,985	O	Active Permit	Nov 2006	Jan 2010
30-015-35471	COG OPERATING LLC	HOLDER CB FEDERAL	11	EDDY	S:9, T:17S, R:30E	LOCO HILLS	PADDOCK	5,896	O	Active	Sep 2007	Jan 2010
30-015-35649	COG OPERATING LLC	POLARIS B FEDERAL	6	EDDY	S:9, T:17S, R:30E	LOCO HILLS	PADDOCK	5,970	O	Active	Nov 2007	Jan 2010
30-015-35699	COG OPERATING LLC	POLARIS B FEDERAL	7	EDDY	S:9, T:17S, R:30E	LOCO HILLS	PADDOCK	6,020	O	Active Permit	Feb 2008	Jan 2010
30-015-35393	COG OPERATING LLC	POLARIS B FEDERAL	8	EDDY	S:9, T:17S, R:30E	LOCO HILLS; GLORIETA YESO		5,970	O	Active		
30-015-35927	COG OPERATING LLC	POLARIS B FEDERAL	16	EDDY	S:9, T:17S, R:30E	LOCO HILLS	PADDOCK	5,935	O	Active Permit	Mar 2008	Jan 2010
30-015-35931	COG OPERATING LLC	POLARIS B FEDERAL	15	EDDY	S:9, T:17S, R:30E	LOCO HILLS	PADDOCK	5,920	O	Active Permit	Feb 2008	Jan 2010
	COG	POLARIS			S:9,							

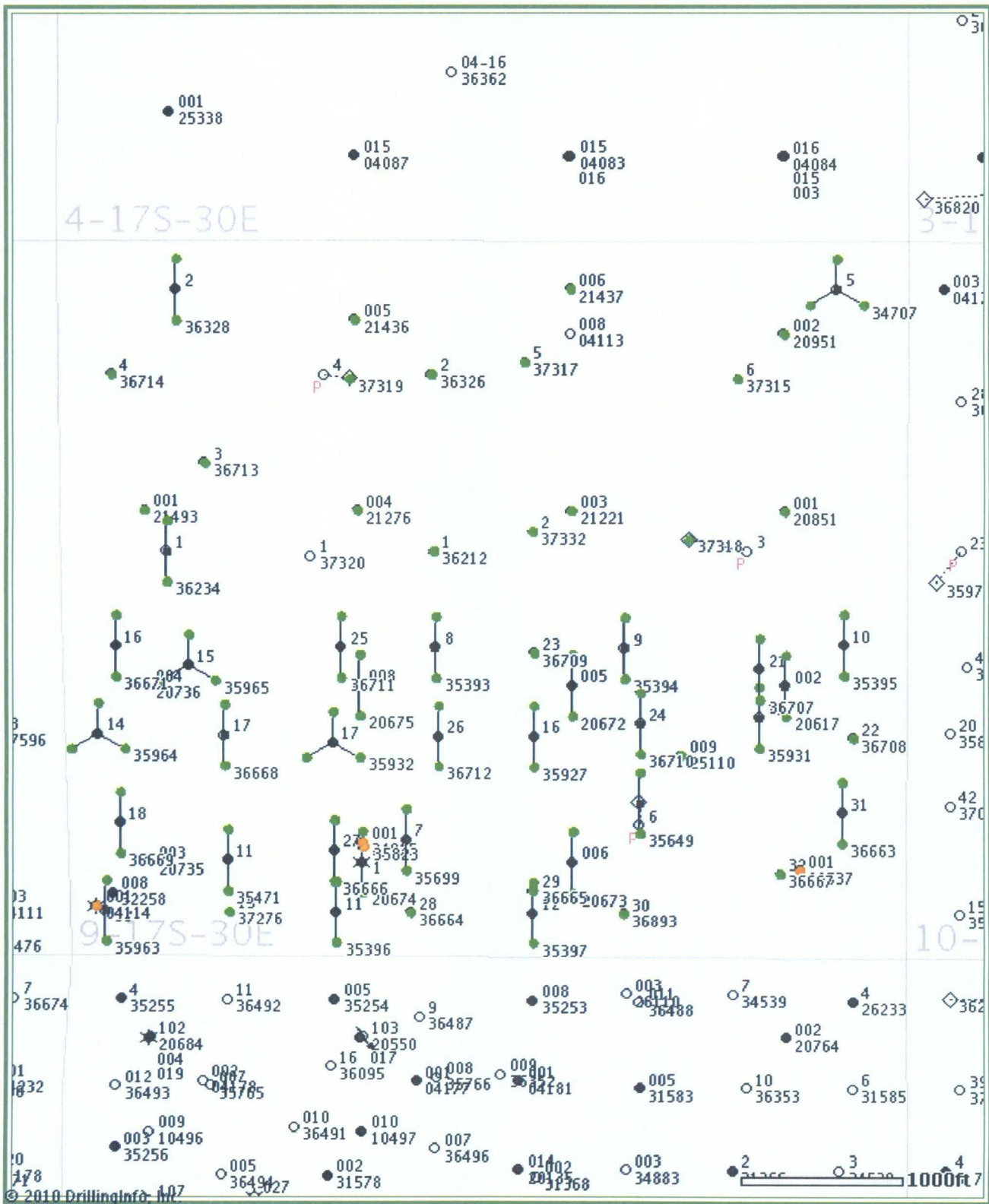
30-015-35932	OPERATING LLC	B FEDERAL	17	EDDY	T:17S, R:30E	LOCO HILLS	PADDOCK	5,920	O	Active Permit	Feb 2008	Jan 2010
30-015-35471	COG OPERATING LLC	HOLDER CB FEDERAL	11	EDDY	S:9, T:17S, R:30E	LOCO HILLS; EMPIRE; YESO		5,896	O	Active		
30-015-35649	COG OPERATING LLC	POLARIS B FEDERAL	6	EDDY	S:9, T:17S, R:30E	LOCO HILLS; GLORETA-YESO (GAS)	GAS	5,970	O	Active		
30-015-35963	COG OPERATING LLC	HOLDER CB FEDERAL	13	EDDY	S:9, T:17S, R:30E	LOCO HILLS	PADDOCK	5,917	O	Active Permit	Aug 2008	Jan 2010
30-015-35964	COG OPERATING LLC	HOLDER CB FEDERAL	14	EDDY	S:9, T:17S, R:30E	LOCO HILLS	PADDOCK	5,935	O	Active Permit	Oct 2008	Jan 2010
30-015-35965	COG OPERATING LLC	HOLDER CB FEDERAL	15	EDDY	S:9, T:17S, R:30E	LOCO HILLS	PADDOCK	5,920	O	Active Permit	Jun 2008	Jan 2010
30-015-35394	COG OPERATING LLC	POLARIS B FEDERAL	9	EDDY	S:9, T:17S, R:30E	LOCO HILLS; GLORETA-YESO (GAS)	GAS	6,007	O	Active Permit		
30-015-35396	COG OPERATING LLC	POLARIS B FEDERAL	11	EDDY	S:9, T:17S, R:30E	LOCO HILLS; GLORETA-YESO (GAS)	GAS	6,015	O	Active		
30-015-35397	COG OPERATING LLC	POLARIS B FEDERAL	12	EDDY	S:9, T:17S, R:30E	LOCO HILLS	PADDOCK	5,920	O	Active	Nov 2007	Jan 2010
30-015-35699	COG OPERATING LLC	POLARIS B FEDERAL	7	EDDY	S:9, T:17S, R:30E	LOCO HILLS; GLORIETA YESO		6,020	O	Active Permit		
30-015-35927	COG OPERATING LLC	POLARIS B FEDERAL	16	EDDY	S:9, T:17S, R:30E	LOCO HILLS; GLORIETA YESO		5,935	O	Active Permit		
30-015-35931	COG OPERATING LLC	POLARIS B FEDERAL	15	EDDY	S:9, T:17S, R:30E	LOCO HILLS; GLORIETA YESO		5,920	O	Active Permit		
30-015-35932	COG OPERATING LLC	POLARIS B FEDERAL	17	EDDY	S:9, T:17S, R:30E	LOCO HILLS	QU-GB-SA, SOUTH	5,920	O	Active Permit		
30-015-36212	CIMAREX ENERGY CO. OF COLORADO	DRACO 9 FEDERAL	1	EDDY	S:9, T:17S, R:30E	LOCO HILLS	PADDOCK	6,000	PO	Active Permit		
30-015-36234	CIMAREX ENERGY CO. OF COLORADO	VEGA "9" FEDERAL	1	EDDY	S:9, T:17S, R:30E	LOCO HILLS	PADDOCK	5,995	O	Active Permit	Jun 2008	Jan 2010
30-015-35395	COG OPERATING LLC	POLARIS B FEDERAL	10	EDDY	S:9, T:17S, R:30E	LOCO HILLS	QU-GB-SA, SOUTH	6,000	O	Active		
30-015-35965	COB OPERATING LLC	HOLDER CB FEDERAL	15	EDDY	S:9, T:17S, R:30E	LOCO HILLS; GLORIETA-YESO		5,920	O	Active Permit		
30-015-36328	CIMAREX ENERGY CO. OF COLORADO	VEGA "9" FEDERAL	2	EDDY	S:9, T:17S, R:30E	LOCO HILLS (PADDOCK)	PADDOCK	6,005	O	Active Permit	Jun 2008	Jan 2010
	CIMAREX ENERGY CO.				S:9,							

Well ID	Operator	Holder	Count	Status	Location	Area	Volume	Permit Type	Start Date	End Date
30-015-36326	OF COLORADO COG OPERATING LLC	DRACO 9 FEDERAL HOLDER CB	2	EDDY	LOCO HILLS (PADDOCK)	PADDOCK	6,000	Active Permit		
30-015-35965	COG OPERATING LLC	FEDERAL	15	EDDY	LOCO HILLS	QU-GB-SA, SOUTH	5,920	Active Permit		
30-015-35963	COG OPERATING LLC	HOLDER CB FEDERAL	13	EDDY	LOCO HILLS; GLORIETA-YESO		5,917	Active Permit		
30-015-36234	CIMAREX ENERGY CO. OF COLORADO	VEGA 9 FEDERAL	1	EDDY	LOCO HILLS; GLORIETA-YESO		5,995	Active Permit		
30-015-36663	COG OPERATING LLC	POLARIS B FEDERAL	31	EDDY	LOCO HILLS (PADDOCK)	PADDOCK	6,006	Active Permit	Jul 2009	Jan 2010
30-015-36664	COG OPERATING LLC	POLARIS B FEDERAL	28	EDDY	LOCO HILLS (PADDOCK)	PADDOCK	6,000	Active Permit		
30-015-36665	COG OPERATING LLC	POLARIS B FEDERAL	29	EDDY	LOCO HILLS (PADDOCK)	PADDOCK	6,000	Active Permit		
30-015-36666	COG OPERATING LLC	POLARIS B FEDERAL	27	EDDY	LOCO HILLS (PADDOCK)	PADDOCK	6,023	Active Permit		
30-015-36667	COG OPERATING LLC	POLARIS B FEDERAL	32	EDDY	LOCO HILLS (PADDOCK)	PADDOCK	6,000	Active Permit		
30-015-36668	COG OPERATING LLC	HOLDER CB FEDERAL	17	EDDY	LOCO HILLS (PADDOCK)	PADDOCK	6,004	Active Permit	Aug 2009	Jan 2010
30-015-36669	COG OPERATING LLC	HOLDER CB FEDERAL	18	EDDY	LOCO HILLS (PADDOCK)	PADDOCK	6,049	Active Permit	Dec 2009	Jan 2010
30-015-36671	COG OPERATING LLC	HOLDER CB FEDERAL	16	EDDY	LOCO HILLS (PADDOCK)	PADDOCK	6,017	Active Permit	Jan 2010	Jan 2010
30-015-36707	COG OPERATING LLC	POLARIS B FEDERAL	21	EDDY	LOCO HILLS (PADDOCK)	PADDOCK	6,010	Active Permit	May 2009	Jan 2010
30-015-36708	COG OPERATING LLC	POLARIS B FEDERAL	22	EDDY	LOCO HILLS (PADDOCK)	PADDOCK	6,000	Active Permit		
30-015-36709	COG OPERATING LLC	POLARIS B FEDERAL	23	EDDY	LOCO HILLS (PADDOCK)	PADDOCK	6,000	Active Permit		
30-015-36710	COG OPERATING LLC	POLARIS B FEDERAL	24	EDDY	LOCO HILLS (PADDOCK)	PADDOCK	6,005	Active Permit	May 2009	Jan 2010
30-015-36711	COG OPERATING LLC	POLARIS B FEDERAL	25	EDDY	LOCO HILLS (PADDOCK)	PADDOCK	6,012	Active Permit	Oct 2009	Jan 2010
30-015-36712	COG OPERATING LLC	POLARIS B FEDERAL	26	EDDY	LOCO HILLS (PADDOCK)	PADDOCK	6,007	Active Permit	Jul 2009	Jan 2010
30-015-36713	CIMAREX ENERGY CO. OF COLORADO	VEGA 9 FEDERAL	3	EDDY	LOCO HILLS (PADDOCK)	PADDOCK	6,000	Active Permit		

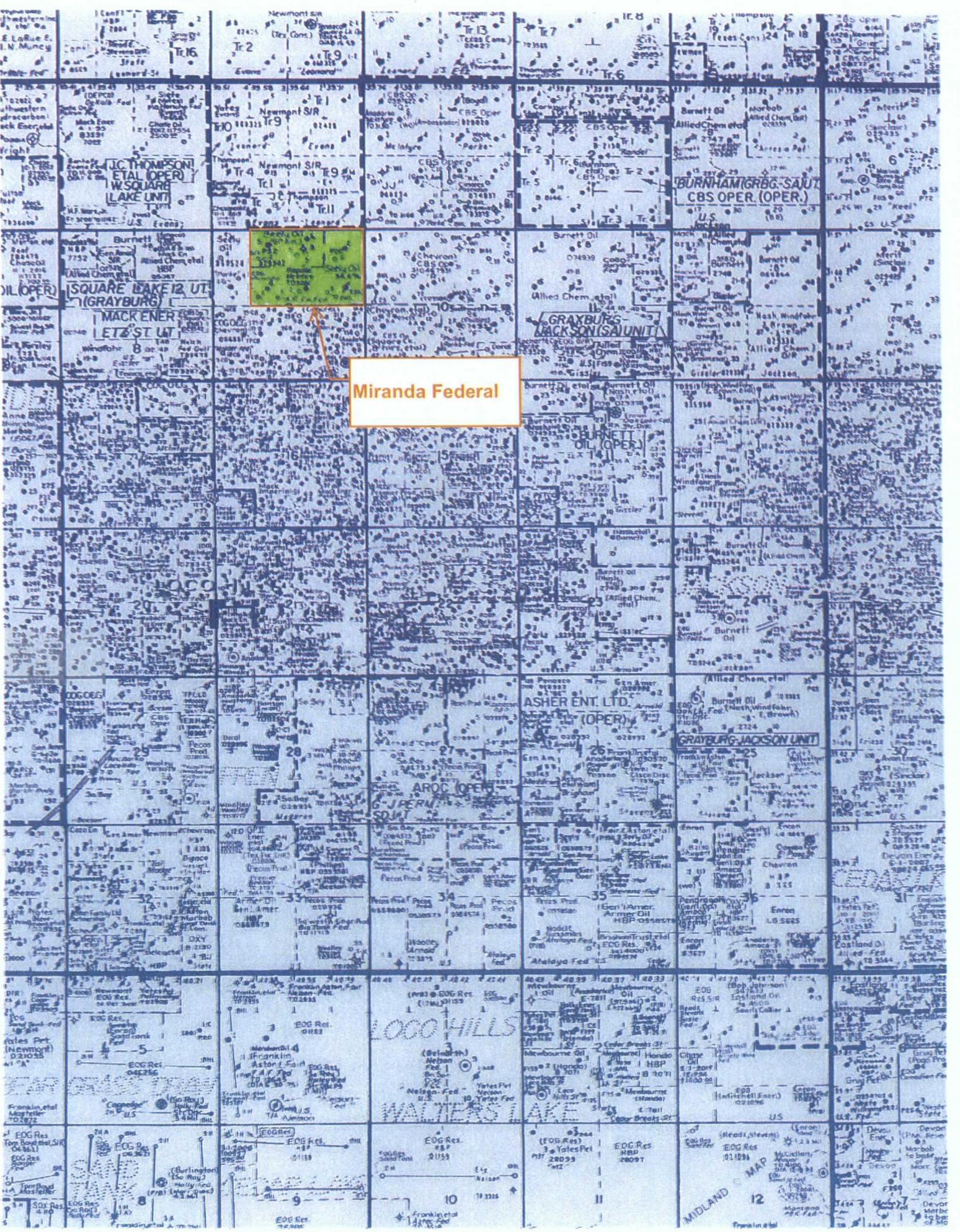
30-015-36714	CIMAREX ENERGY CO. OF COLORADO	VEGA 9 FEDERAL	4	EDDY	S-9, T-17S, R-30E	LOCO HILLS (PADDOCK)	PADDOCK	6,000	PO	Active Permit	
30-015-36328	CIMAREX ENERGY CO. OF COLORADO	VEGA 9 FEDERAL	2	EDDY	S-9, T-17S, R-30E	LOCO HILLS; GLORIETA-YESO		6,005	O	Active Permit	
30-015-35964	COG OPERATING LLC	HOLDER CB FEDERAL	14	EDDY	S-9, T-17S, R-30E	LOCO HILLS; GLORIETA-YESO		5,935	O	Active Permit	
30-015-35964	COG OPERATING LLC	HOLDER CB FEDERAL	14	EDDY	S-9, T-17S, R-30E	LOCO HILLS; GLORIETA-YESO		5,935	O	Active Permit	
30-015-36893	COG OPERATING LLC	POLARIS B FEDERAL	30	EDDY	S-9, T-17S, R-30E	LOCO HILLS (PADDOCK)	PADDOCK	6,000	PO	Active Permit	
30-015-35932	COG OPERATING LLC	POLARIS B FEDERAL	17	EDDY	S-9, T-17S, R-30E	LOCO HILLS; GLORIETA-YESO		5,920	O	Active Permit	
30-015-36710	COG OPERATING LLC	POLARIS B FEDERAL	24	EDDY	S-9, T-17S, R-30E	LOCO HILLS		6,005	O	Active Permit	
30-015-36707	COG OPERATING LLC	POLARIS B FEDERAL	21	EDDY	S-9, T-17S, R-30E	LOCO HILLS		6,010	O	Active Permit	
30-015-36712	COG OPERATING LLC	POLARIS B FEDERAL	26	EDDY	S-9, T-17S, R-30E	LOCO HILLS; GLORIETA-YESO		6,007	O	Active Permit	
30-015-36663	COG OPERATING LLC	POLARIS B FEDERAL	31	EDDY	S-9, T-17S, R-30E	LOCO HILLS; GLORIETA-YESO		6,006	O	Active Permit	
30-015-37276	COG OPERATING LLC	HOLDER CB FEDERAL	19	EDDY	S-9, T-17S, R-30E	LOCO HILLS (PADDOCK)	PADDOCK	5,850	PO	Active Permit	
30-015-37319	COG OPERATING LLC	MIRANDA FEDERAL	4	EDDY	S-9, T-17S, R-30E	LOCO HILLS (PADDOCK)	PADDOCK	6,159	PO	Active Permit	
30-015-37315	COG OPERATING LLC	MIRANDA FEDERAL	6	EDDY	S-9, T-17S, R-30E	LOCO HILLS (PADDOCK)	PADDOCK	6,000	PO	Active Permit	
30-015-37318	COG OPERATING LLC	MIRANDA FEDERAL	3	EDDY	S-9, T-17S, R-30E	LOCO HILLS (PADDOCK)	PADDOCK	6,170	PO	Active Permit	
30-015-37317	COG OPERATING LLC	MIRANDA FEDERAL	5	EDDY	S-9, T-17S, R-30E	LOCO HILLS (PADDOCK)	PADDOCK	6,000	PO	Active Permit	
30-015-37332	COG OPERATING LLC	MIRANDA FEDERAL	2	EDDY	S-9, T-17S, R-30E	LOCO HILLS (PADDOCK)	PADDOCK	6,000	PO	Active Permit	
30-015-36668	COG OPERATING LLC	HOLDER CB FEDERAL	17	EDDY	S-9, T-17S, R-30E	LOCO HILLS	QU-GB-SA, SOUTH	6,004	O	Active Permit	
30-015-36711	COG OPERATING LLC	POLARIS B FEDERAL	25	EDDY	S-9, T-17S, R-30E	LOCO HILLS; GLORIETA-YESO		6,012	O	Active Permit	
	COG OPERATING	POLARIS B			S-9, T-17S, R-30E						

30-015-34707	LLC	FEDERAL	5	EDDY	R:30E	LOCO HILLS, GLORIETA-YEŠO	5,985	O	Active Permit
30-015-36669	COG OPERATING LLC	HOLDER CB FEDERAL	18	EDDY	S:9 T:17S, R:30E	LOCO HILLS	6,049	O	Active Permit
30-015-36666	COG OPERATING LLC	POLARIS B FEDERAL	27	EDDY	S:9, T:17S, R:30E	LOCO HILLS QU-GB-SA, SOUTH	6,023	O	Active Permit
30-015-36671	COG OPERATING LLC	HOLDER CB FEDERAL	16	EDDY	S:9, T:17S, R:30E	LOCO HILLS QU-GB-SA, SOUTH	6,017	O	Active Permit

Offset Wells to Miranda Federal #24



© 2009 Drilling Info, Inc. All rights reserved. All data and information is provided "As Is" and subject to the subscription agreement.



Miranda Federal

BURNETT OIL (OPER.)
GRAYBURG-JACKSON UNIT
CBS OPER. (OPER.)

GRAYBURG-JACKSON UNIT

BURNETT OIL (OPER.)

ASHER ENT. LTD. (OPER.)

AROC OPER.

JEPER UNIT

LOCO HILLS

WALTERS LAKE

MIDLAND

