

1R - 427-301

REPORTS

DATE:

2-3-10

EME Tex Amarada 'J'
2009

1R427-301

RECEIVED

APP - 6 2010

Environmental Bureau
Oil Conservation Division

CLOSURE

RECEIVED

RICE OPERATING COMPANY
JUNCTION BOX FINAL REPORTAPP - 6 2010
Environmental Bureau
Oil Conservation Division

BOX LOCATION

SWD SYSTEM	JUNCTION	UNIT	SECTION	TOWNSHIP	RANGE	COUNTY	BOX DIMENSIONS - FEET		
Eunice Monument Eumont (EME)	Texaco Amerada 'J' EOL	K	24	19S	36E	Lea	Length 5' 4"	Width 3'	Depth 3'
							eliminated		

LAND TYPE: BLM _____ STATE _____ FEE LANDOWNER Jimmie Cooper OTHER _____Depth to Groundwater 57 feet NMOCD SITE ASSESSMENT RANKING SCORE: 30*

General Description of Remedial Action: This junction box, which was located on a former tank battery location, was eliminated in 2004 during the pipeline replacement/upgrade program. When the site was revisited in 2007, it was discovered that the former junction box site was encompassed in the producer's remediation of the former tank battery.

* Several water wells are located within radius.

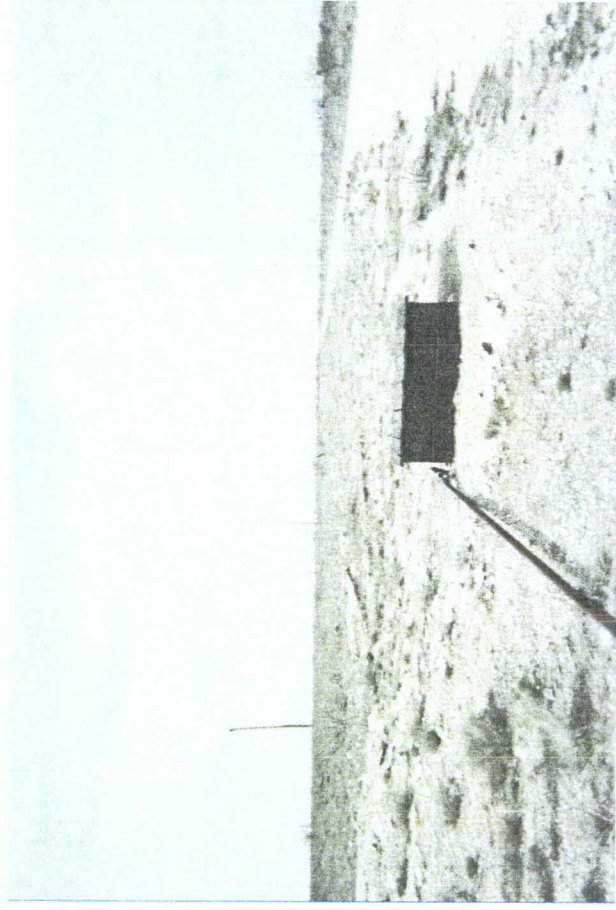
enclosures: photos

I HEREBY CERTIFY THAT THE INFORMATION ABOVE IS TRUE AND COMPLETE TO THE BEST OF MY
KNOWLEDGE AND BELIEF.

REPORT
ASSEMBLED BY Katie Jones INITIAL KJPROJECT LEADER Larry Bruce Baker Jr. SIGNATURE Larry Bruce Baker Jr. DATE 2-3-10

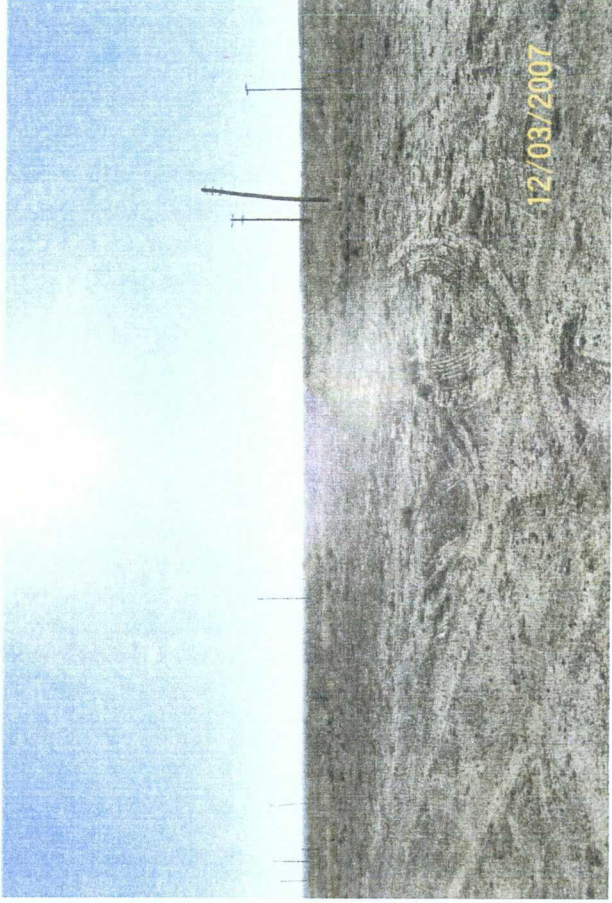
EME Texaco Amerada 'J' EOL

Unit K, Section 24, T19S, R36E



former junction box

3/26/2004



former junction box site after the
producer's remediation

12/03/2007

12/03/2007



current vegetation at the former junction box site

11/18/2009

11/18/2009