

SD

N/R

**Chevron**

May 5, 1997

Administrative Application For Simultaneous Dedication
Eumont Yates 7Rvrs Qn (Pro Gas) Pool
Meredith Com #4
785' FNL and 660' FEL
Section 19, T-21-S, R-36-E
Lea County, New Mexico

Chevron U.S.A. Production Company
P.O. Box 1150
Midland, TX 79702

State of New Mexico
Energy, Minerals & Natural Resources Dept.
Oil Conservation Division
2040 South Pacheco
Santa Fe, New Mexico 87504

MAY - 8 1997

OIL CONSERVATION DIVISION

Attn: Mr. William J. LeMay -- Director

Gentlemen:

Chevron U.S.A. Inc. respectfully requests your approval of this administrative application for Simultaneous Dedication.

Chevron is planning to drill and complete the Meredith Com #4 in the Eumont Yates 7 Rvrs Qn (Pro Gas) Pool. It is our desire to simultaneously dedicate the existing 160-acre Eumont Gas Proration Unit currently assigned to our Meredith Com #2, and #3 [Administrative Order NSP-1117] to all three wells. The 160-acre gas proration unit comprises the E/2 of NE/4 and E/2 of the SE/4 of Section 19, T-21-S, R-36-E, Lea County, New Mexico. As the Meredith Com #2 and #3 are producing at a current rate of 250 MCF/D, the proposed new drill of Well #4 will essentially capture reserves which otherwise would not be produced from this GPU.

Chevron respectfully requests your approval of this administrative application for simultaneous dedication. Attached is a vicinity map, location verification map and a Form C-102 plat.

If you have any questions or require any further information concerning this application, please contact me at (915) 687-7347.

Yours very truly,


J. H. Saenz
Petroleum Engineer

JHS/tk
Attachments

cc: NMOCD -- Hobbs, NM
J. K. Ripley
N. V. Mouser

D. K. Beckham
J. B. Wilkinson
Central Files - Lease/Well Files

DISTRICT I
P.O. Box 1980, Hobbs, NM 88241-1980

State of New Mexico
Energy, Minerals and Natural Resources Department

Form C-102
Revised February 10, 1994
Submit to Appropriate District Office
State Lease - 4 Copies
Fee Lease - 3 Copies

DISTRICT II
P.O. Drawer DD, Artesia, NM 88211-0719

DISTRICT III
1000 Rio Brazos Rd., Aztec, NM 87410

OIL CONSERVATION DIVISION

P.O. Box 2088
Santa Fe, New Mexico 87504-2088

DISTRICT IV
P.O. BOX 2086, SANTA FE, N.M. 87504-2086

☐ AMENDED REPORT

WELL LOCATION AND ACREAGE DEDICATION PLAT

API Number	Pool Code	Pool Name
Property Code	Property Name MEREDITH COM.	Well Number #4
OGRID No.	Operator Name CHEVRON U.S.A. INC.	Elevation 3630'

Surface Location

UL or lot No.	Section	Township	Range	Lot Idn	Feet from the	North/South line	Feet from the	East/West line	County
A	19	21 S	36 E		785	NORTH	660	EAST	LEA

Bottom Hole Location If Different From Surface

UL or lot No.	Section	Township	Range	Lot Idn	Feet from the	North/South line	Feet from the	East/West line	County
Dedicated Acres	Joint or Infill	Consolidation Code	Order No.						

NO ALLOWABLE WILL BE ASSIGNED TO THIS COMPLETION UNTIL ALL INTERESTS HAVE BEEN CONSOLIDATED
OR A NON-STANDARD UNIT HAS BEEN APPROVED BY THE DIVISION

LOT 1 35.00 AC.									
LOT 2 35.00 AC.									
LOT 3 35.00 AC.									
LOT 4 35.00 AC.									

785'

660'

OPERATOR CERTIFICATION

I hereby certify the the information contained herein is true and complete to the best of my knowledge and belief.

Signature _____

Printed Name _____

Title _____

Date _____

SURVEYOR CERTIFICATION

I hereby certify that the well location shown on this plat was plotted from field notes of actual surveys made by me or under my supervision, and that the same is true and correct to the best of my belief.

OCTOBER 28, 1996

Date Surveyed _____ CDG

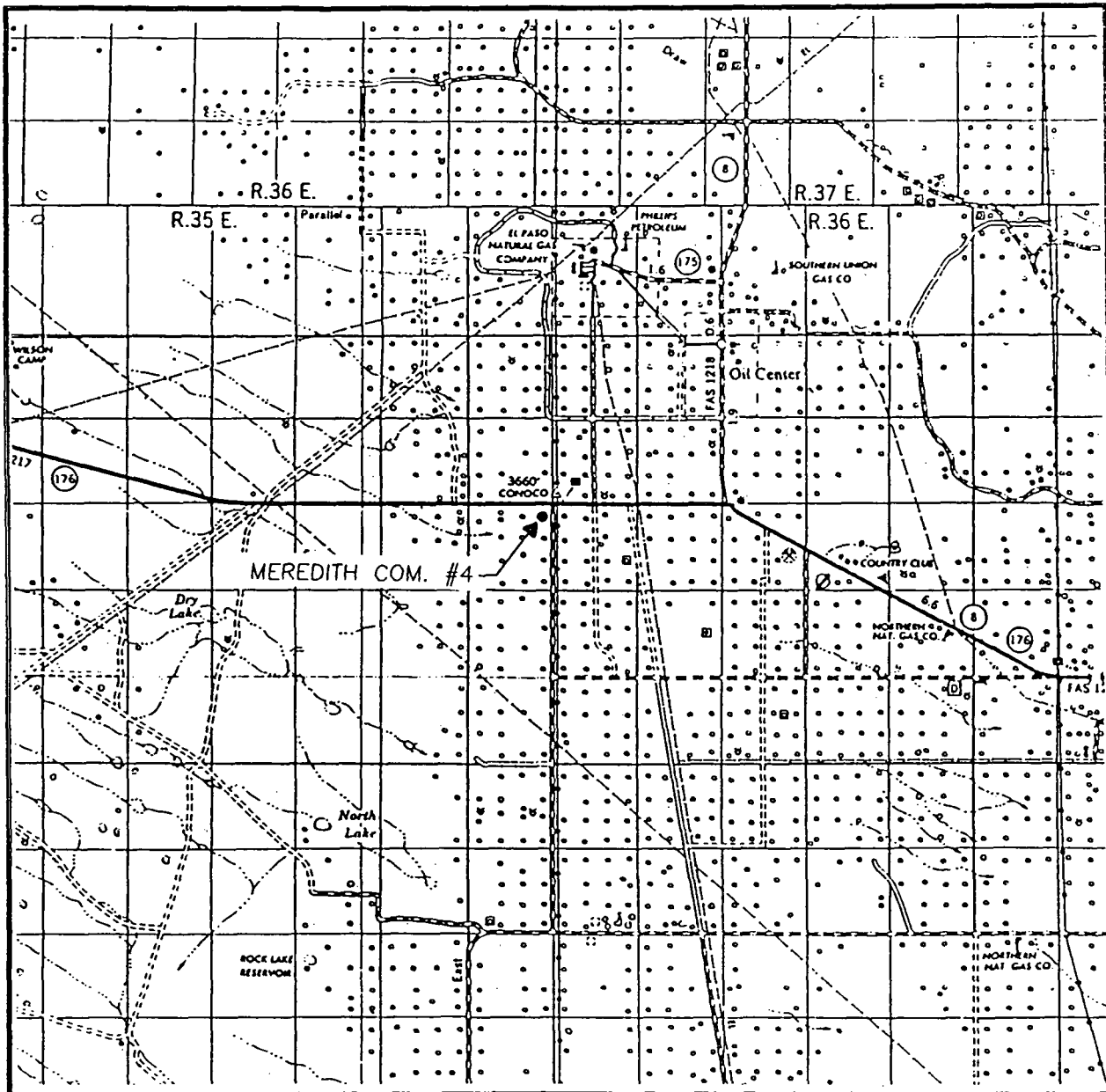
Signature & Seal of Professional Surveyor

Professional Surveyor

11-30-96

Certification No. JOHN W. WEST 676
RONALD E. EIDSON 3239
PROFESSIONAL SURVEYOR EIDSON 12641

VICINITY MAP

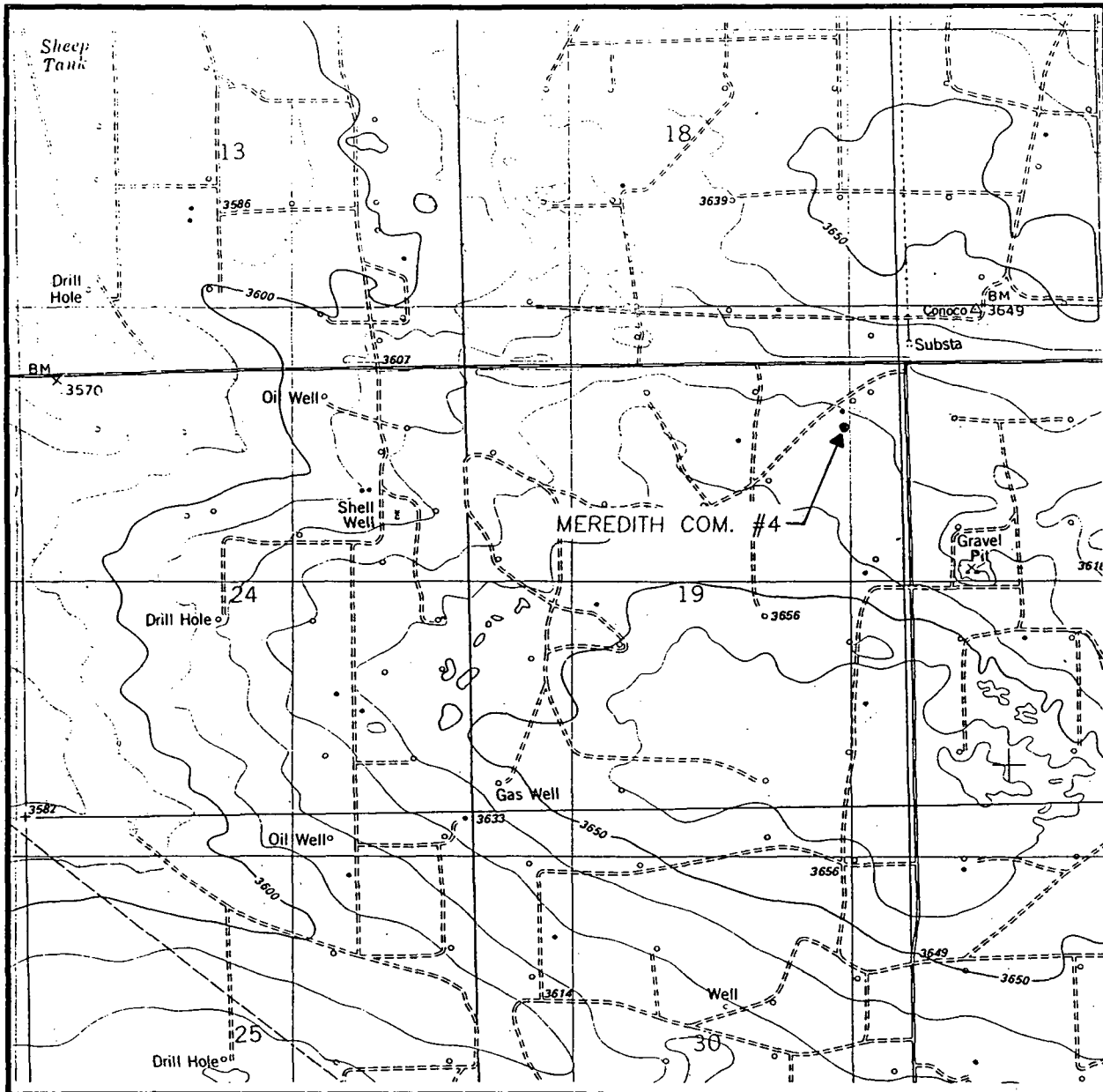


SCALE: 1" = 2 MILES

SEC. 19 TWP. 21-S RGE. 36-E
 SURVEY N.M.P.M.
 COUNTY LEA
 DESCRIPTION 785' FNL & 660' FEL
 ELEVATION 3629.9'
 OPERATOR CHEVRON U.S.A. INC.
 LEASE MEREDITH COM.

JOHN WEST ENGINEERING
HOBBS, NEW MEXICO
(505) 393-3117

LOCATION VERIFICATION MAP



SCALE: 1" = 2000'

CONTOUR INTERVAL:
OIL CENTER - 10'

SEC. 19 TWP. 21-S RGE. 36-E

SURVEY N.M.P.M.

COUNTY LEA

DESCRIPTION 785' FNL & 660' FEL

ELEVATION 3629.9'

OPERATOR CHEVRON U.S.A. INC.

LEASE MEREDITH COM.

U.S.G.S. TOPOGRAPHIC MAP

OIL CENTER, N.M.

JOHN WEST ENGINEERING
HOBBS, NEW MEXICO
(505) 393-3117

CMD :
OG5SECT

ONGARD
INQUIRE LAND BY SECTION

07/10/97 14:34:23
OGOMES -EMDU
PAGE NO: 1

Sec : 19 Twp : 21S Rng : 36E Section Type : NORMAL

1	C	B	A
35.00	40.00	40.00	40.00
CS	CS	CS	CS
B01511 12/38	B01511 12/38	B01511 12/38	A02742 4 08/39
ATLANTIC RICHFIEL	ATLANTIC RICHFIEL	ATLANTIC RICHFIEL	TEXACO EXPLORATIO
A	A		C
			A
2	F	G	H
35.00	40.00	40.00	40.00
CS	CS	CS	CS
B01511 4 12/38	B01511 12/38	B01511 12/38	B02276 1 01/39
ATLANTIC RICHFIEL	ATLANTIC RICHFIEL	ATLANTIC RICHFIEL	CHEVRON U S A INC
P	A	A	C

PF01 HELP	PF02	PF03 EXIT	PF04 GoTo	PF05	PF06
PF07 BKWD	PF08 FWD	PF09 PRINT	PF10 SDIV	PF11	PF12

CMD :
OG5SECT

ONGARD
INQUIRE LAND BY SECTION

07/10/97 14:34:29
OGOMES -EMDU
PAGE NO: 2

Sec : 19 Twp : 21S Rng : 36E Section Type : NORMAL

3	K	J	I
35.00	40.00	40.00	40.00
CS	CS	CS	CS
B01511 4 12/38	B01511 4 12/38	B01511 12/38	B02276 1 01/39
ATLANTIC RICHFIEL	ATLANTIC RICHFIEL	ATLANTIC RICHFIEL	CHEVRON U S A INC
A	A	A	C
			A
4	N	O	P
35.00	40.00	40.00	40.00
CS	CS	CS	CS
B01511 4 12/38	B01511 4 12/38	B01511 12/38	B02276 1 01/39
ATLANTIC RICHFIEL	ATLANTIC RICHFIEL	ATLANTIC RICHFIEL	CHEVRON U S A INC
P	P		C
			A

PF01 HELP	PF02	PF03 EXIT	PF04 GoTo	PF05	PF06
PF07 BKWD	PF08 FWD	PF09 PRINT	PF10 SDIV	PF11	PF12