

SDX RESOURCES, INC.

P.O. BOX 5061  
MIDLAND, TEXAS 79704  
(915) 685-1761

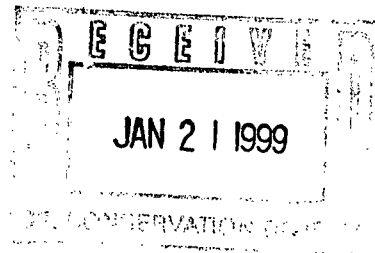
2/10/99  
SD

Jan. 14, 1999

NMOCD  
2040 South Pacheco Street  
Santa Fe, NM 87505

Attention: Mr. Mike Stogner

RE: State A 32 # 5  
Sec. 32, T24S, R37E  
710 FNL, 660 FWL  
Lea County, New Mexico



Dear Mr. Stogner,

SDX Resources, Inc. is the operator of the State A 32 # 4 well located in unit F of sec. 32 T24S R37E of Lea Co., N.M.. This well is dedicated to a 120 acre non-standard proration unit consisting of the NW/4 NW/4 and the S/2 NW/4 of sec. 32 created by administrative order NSP-1087. SDX is planning to drill the State A 32 # 5 well on the same 120 acre non-standard proration unit at the above-mentioned location. SDX request that this letter serve as application to simultaneously dedicate this 120 acre NSP unit to the State A 32 # 4 and #5 wells. Information detailing NSP-1087, a C-101 & 102 for the #5 well, an outlined lease map, and other pertinent information is attached to this application. All offset operators have been notified and proof of notification is attached. Your assistance on this is appreciated.

Sincerely,

Chuck Morgan

Enclosures

District I  
PO Box 1980, Hobbs, NM 88241-1980

District II  
811 South First, Artesia, NM 88210

District III  
1000 Rio Brazos Rd., Aztec, NM 87410

District IV  
2040 South Pacheco, Santa Fe, NM 87505

State of New Mexico  
Energy, Minerals & Natural Resources Department

OIL CONSERVATION DIVISION  
2040 South Pacheco  
Santa Fe, NM 87505

Form C-101  
Revised October 18, 1994  
Instructions on back  
Submit to Appropriate District Office  
State Lease - 6 Copies  
Fee Lease - 5 Copies

☒ AMENDED REPORT

APPLICATION FOR PERMIT TO DRILL, RE-ENTER, DEEPEN, PLUGBACK, OR ADD A ZONE

<sup>1</sup> Operator Name and Address SDX Resources, Inc. PO Box 5061 Midland, TX 79704 915/685-1761		<sup>2</sup> OGRID Number 020451
		<sup>3</sup> API Number 30 - 025-34555
<sup>4</sup> Property Code 23976	<sup>5</sup> Property Name State A 32	<sup>6</sup> Well No. 5

<sup>7</sup>Surface Location

UL or lot no.	Section	Township	Range	Lot Idn	Feet from the	North/South line	Feet from the	East/West Line	County
D	32	24S	37E		710	North	660	West	Lea

<sup>8</sup>Proposed Bottom Hole Location If Different From Surface

UL or lot no.	Section	Township	Range	Lot Idn	Feet from the	North/South line	Feet from the	East/West Line	County
<sup>9</sup> Proposed Pool 1 Jalmat, T-Y-7R					<sup>10</sup> Proposed Pool 2				

<sup>11</sup> Work Type Code N	<sup>12</sup> Well Type Code G	<sup>13</sup> Cable/Rotary R	<sup>14</sup> Lease Type Code S	<sup>15</sup> Ground Level Elevation 3243
<sup>16</sup> Multiple No	<sup>17</sup> Proposed Depth 3500	<sup>18</sup> Formation Yates	<sup>19</sup> Contractor United Drig	<sup>20</sup> Spud Date 03-15-99

<sup>21</sup>Proposed Casing and Cement Program

Hole Size	Casing Size	Casing weight/foot	Setting Depth	Sacks of Cement	Estimated TOC
12-1/4"	8-5/8"	24#	450	450 sx	Surface
7-7/8"	5-1/2"	15.5#	3500	700 sx	Surface

<sup>22</sup>Describe the proposed program. If this application is to DEEPEN or PLUG BACK give the data on the present productive zone and proposed new productive zone. Describe the blowout prevention program, if any. Use additional sheets if necessary.

Drill 12-1/4" hole to 450'. Set 8-5/8" csg & cmt to surface. RU BOP's. Drill 7-7/8" hole to 3500'. Set 5-1/2" csg & cmt to surface.  
RD rotary & BOPs. Perf Yates & fracture stimulate & place Yates on test.

<sup>23</sup>I hereby certify that the information given above is true and complete to the best of my knowledge and belief.

Signature: *Bonnie Atwater*

Printed name: Bonnie Atwater

Title: Regulatory Tech. 1/18/99

OIL CONSERVATION DIVISION

Approved By:

Title:

Approval Date:

Expiration Date:

RECEIVED

DEC 16 1998

District I  
PO Box 1980, Hobbs, NM 88241-1980  
District II  
PO Drawer DD, Artesia, NM 88211-0719  
District III  
1000 Rio Brazos Rd., Aztec, NM 87410  
District IV  
PO Box 2088, Santa Fe, NM 87504-2088

State of New Mexico  
Energy, Minerals & Natural Resources Department

OIL CONSERVATION DIVISION  
PO Box 2088  
Santa Fe, NM 87504-2088

Form C-102  
Revised February 10, 1994  
Instructions on back  
Submit to Appropriate District Office  
State Lease - 4 Copies  
Fee Lease - 3 Copies

☐ AMENDED REPORT

WELL LOCATION AND ACREAGE DEDICATION PLAT

API Number		Pool Code	Pool Name
		33820	Jalmat, T-Y-7R
Property Code	Property Name		Well Number
	STATE A 32		5
OGRID No. 020451	Operator Name		Elevation
	SDX RESOURCES, INC.		3243.

<sup>10</sup> Surface Location

UL or lot no.	Section	Township	Range	Lot Ida	Feet from the	North/South line	Feet from the	East/West line	County
D	32	24-S	37-E		710	NORTH	660	WEST	LEA

<sup>11</sup> Bottom Hole Location If Different From Surface

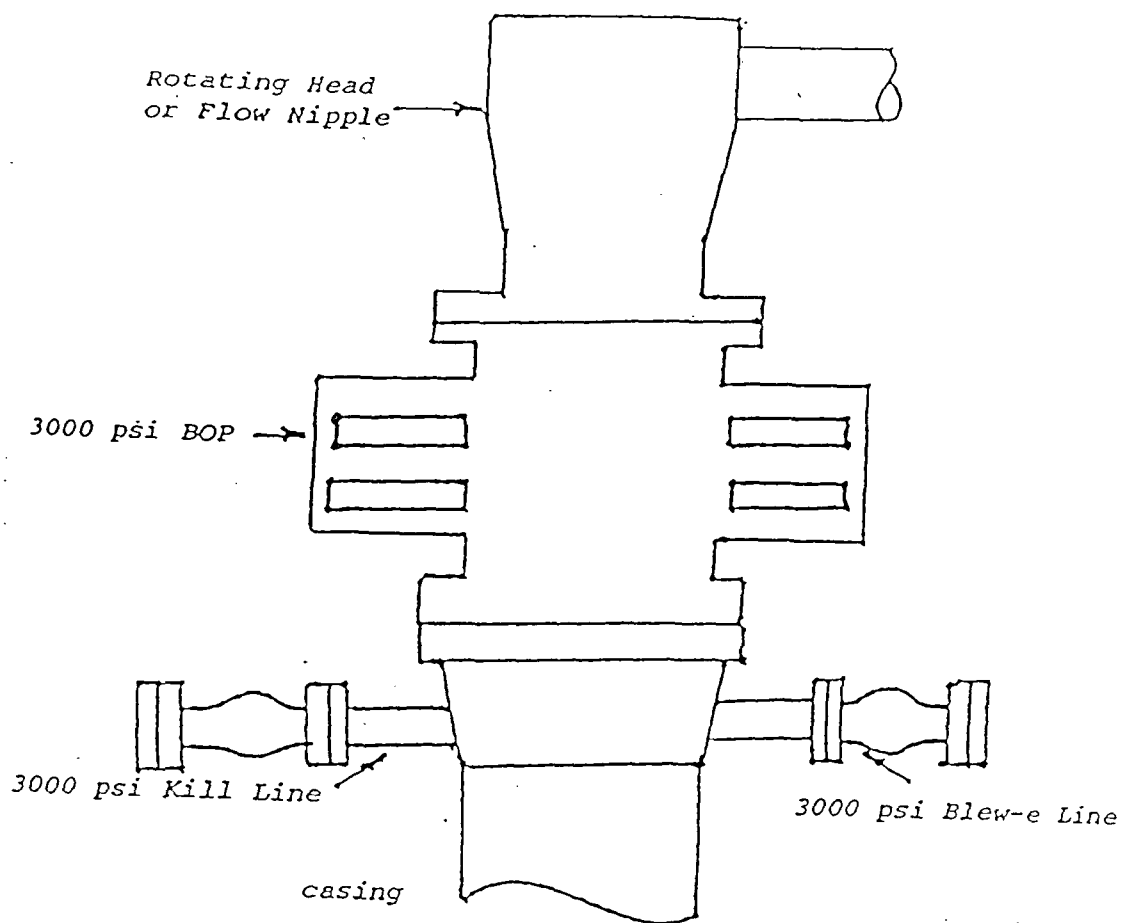
UL or lot no.	Section	Township	Range	Lot Ida	Feet from the	North/South line	Feet from the	East/West line	County

<sup>12</sup> Dedicated Acres	<sup>13</sup> Joint or Infill	<sup>14</sup> Consolidation Code	<sup>15</sup> Order No.
120			

NO ALLOWABLE WILL BE ASSIGNED TO THIS COMPLETION UNTIL ALL INTERESTS HAVE BEEN CONSOLIDATED  
OR A NON-STANDARD UNIT HAS BEEN APPROVED BY THE DIVISION

	<p><sup>17</sup> OPERATOR CERTIFICATION</p> <p>I hereby certify that the information contained herein is true and complete to the best of my knowledge and belief.</p> <p><i>Bonnie Atwater</i> Signature Bonnie Atwater Printed Name Regulatory Tech. Title December 23, 1998 Date</p>
	<p><sup>18</sup> SURVEYOR CERTIFICATION</p> <p>I hereby certify that the well location shown on this plat was plotted from field notes of actual surveys made by me or under my supervision, and that the same is true and correct to the best of my belief.</p> <p>DECEMBER 8, 1998 Date of Survey R. REDDY Signature and Seal of Professional Surveyor: 5412 REGISTERED LAND SURVEYOR NEW MEXICO NM REG. NO. 5412</p>

Blow Out Preventor Schematic



SDX RESOURCES, INC.

LEASE: State A.32

WELL #: 5

Postage paid by addressee  
No postage necessary if mailed in the United States  
Postage paid by addressee  
No postage necessary if mailed in the United States






# OIL CONSERVATION COMMISSION

STATE OF NEW MEXICO  
P. O. BOX 2088 - SANTA FE  
87501

DIRECTOR  
JOE D. RAMEY

LAND COMMISSIONER  
PHIL R. LUCERO



STATE GEOLOGIST  
EMERY C. ARNOLD

March 13, 1978

Allied Chemical  
Union Texas Petroleum Division  
1300 Wilco Building  
Midland, Texas 79701

Re: Administrative Order NSP-1087

Gentlemen:

Reference is made to your application for approval of a 120-acre non-standard gas proration unit consisting of the following acreage in the Jalmat Gas Pool:

LEA COUNTY, NEW MEXICO  
TOWNSHIP 24 SOUTH, RANGE 37 EAST, NMPM  
Section 32: NW/4 NW/4 and S/2 NW/4

It is my understanding that this unit is to be dedicated to your State "A-32" Well No. 4 to be located at an unorthodox location 1780 feet from the North line and 1400 feet from the West line of said Section 32.

By authority granted me under Rule 5(c)3 of Order No. R-1670, the above-described acreage is hereby authorized as a non-standard unit.

Very truly yours,



JOE D. RAMEY,  
Secretary-Director

JDR/LT/dr

cc: Oil Conservation Commission - Hobbs  
Oil & Gas Engineering Committee - Hobbs  
Central Leasing - State Land Office - Santa Fe

NEW MEXICO OIL CONSERVATION COMMISSION  
WELL LOCATION AND ACREAGE DEDICATION PLAT

Form No. 1  
Supersedes C-128  
Effective 1-1-65

All distances must be from the outer boundaries of the Section

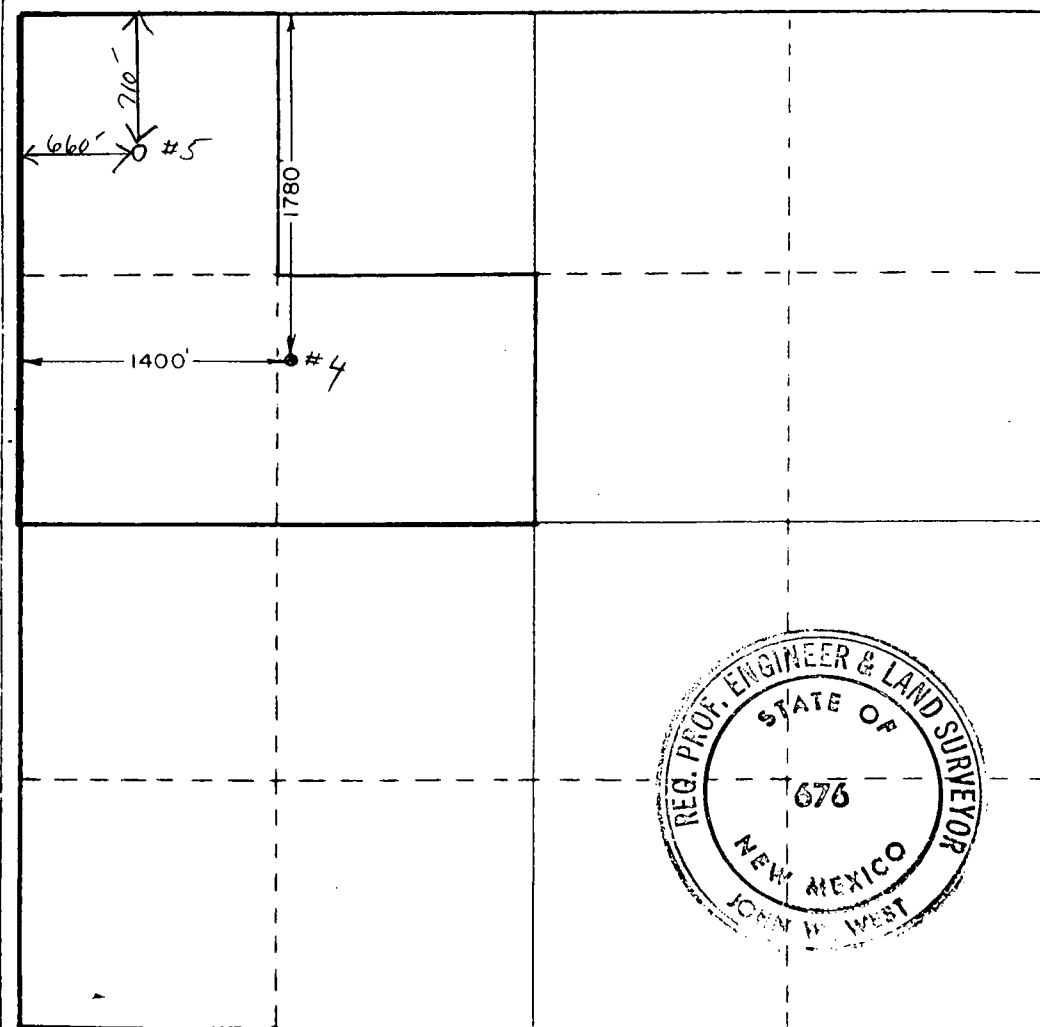
Operator <b>Union Texas Petroleum Corp.</b>		Lease <b>State "A" -32</b>		Well No. <b>4</b>
Unit Letter <b>F</b>	Section <b>32</b>	Township <b>24 South</b>	Range <b>37 East</b>	County <b>Lea</b>
Actual Footage Location of Well:				
<b>1780</b>	feet from the	<b>North</b>	line and	<b>1400</b>
				feet from the
				<b>West</b>
Ground Level Elev. <b>3241.4</b>	Producing Formation		Estimated Acreage	
			Acres	

1. Outline the acreage dedicated to the subject well by colored pencil or hatchure marks on the plat below.
2. If more than one lease is dedicated to the well, outline each and identify the ownership thereof (both as to working interest and royalty).
3. If more than one lease of different ownership is dedicated to the well, have the interests of all owners been consolidated by communitization, unitization, force-pooling, etc?

☐ Yes ☐ No If answer is "yes," type of consolidation \_\_\_\_\_

If answer is "no," list the owners and tract descriptions which have actually been consolidated. (Use reverse side of this form if necessary.) \_\_\_\_\_

No allowable will be assigned to the well until all interests have been consolidated (by communitization, unitization, forced-pooling, or otherwise) or until a non-standard unit, eliminating such interests, has been approved by the Commission.



CERTIFICATION

I hereby certify that the information contained herein is true and complete to the best of my knowledge and belief.

*Stanley A. Post*  
Name

Stanley A. Post

Position

Sr. Prod. Analyst

Company

UNION TEXAS PETROLEUM CORP.

Date

February 15, 1978

I hereby certify that the well location shown on this plat was plotted from field notes of actual surveys made by me or under my supervision, and that the same is true and correct to the best of my knowledge and belief.

Date Surveyed

Jan. 28, 1978

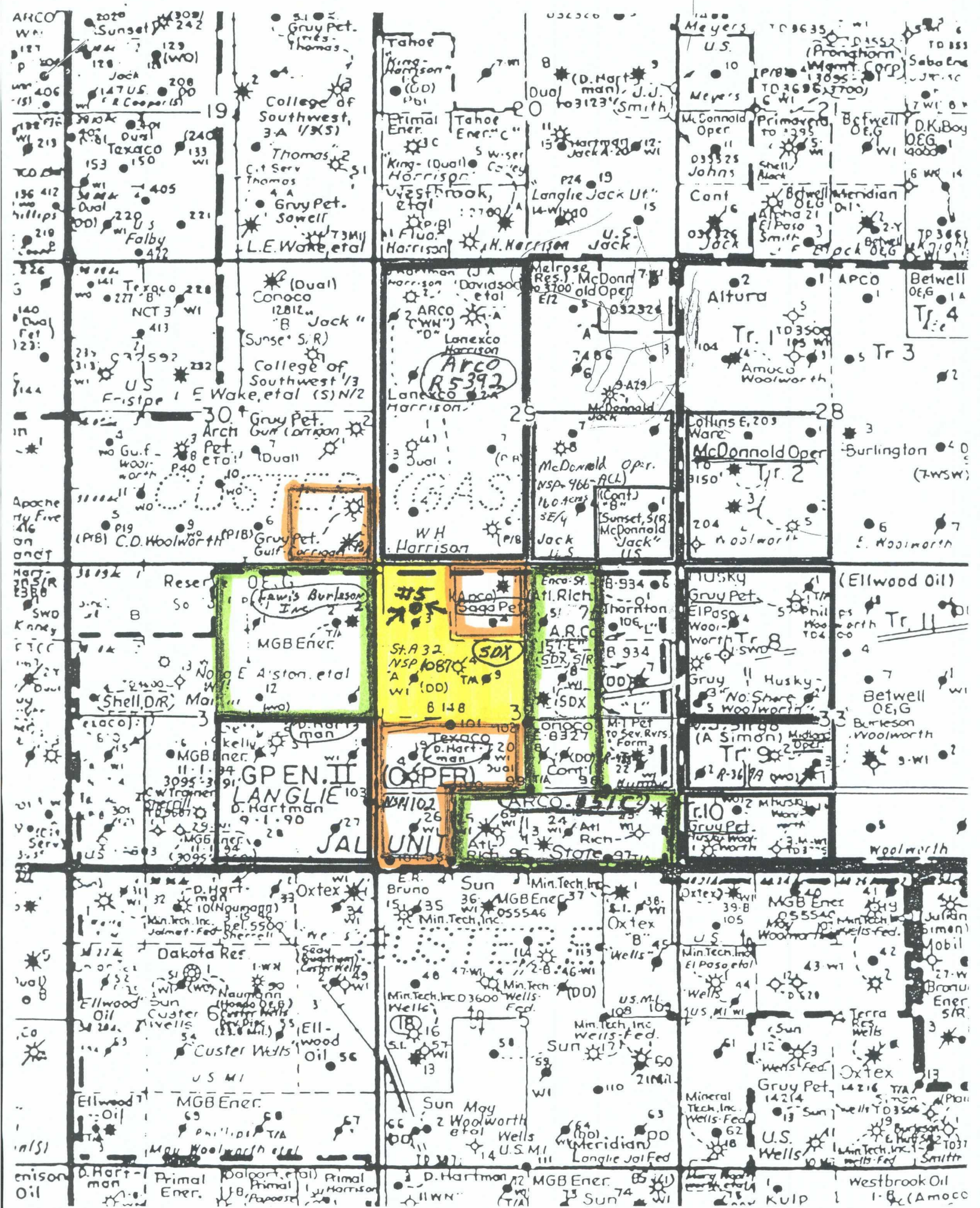
Registered Professional Engineer and/or Land Surveyor

*John W. West*  
Certificate No.

John W. West

676





NEW MEXICO  
OIL CONSERVATION COMMISSION

Gas Well Plat

Date Dec. 28, 1953

SOUTHERN CALIFORNIA PETROLEUM CORP. Martin

Operator

Lease

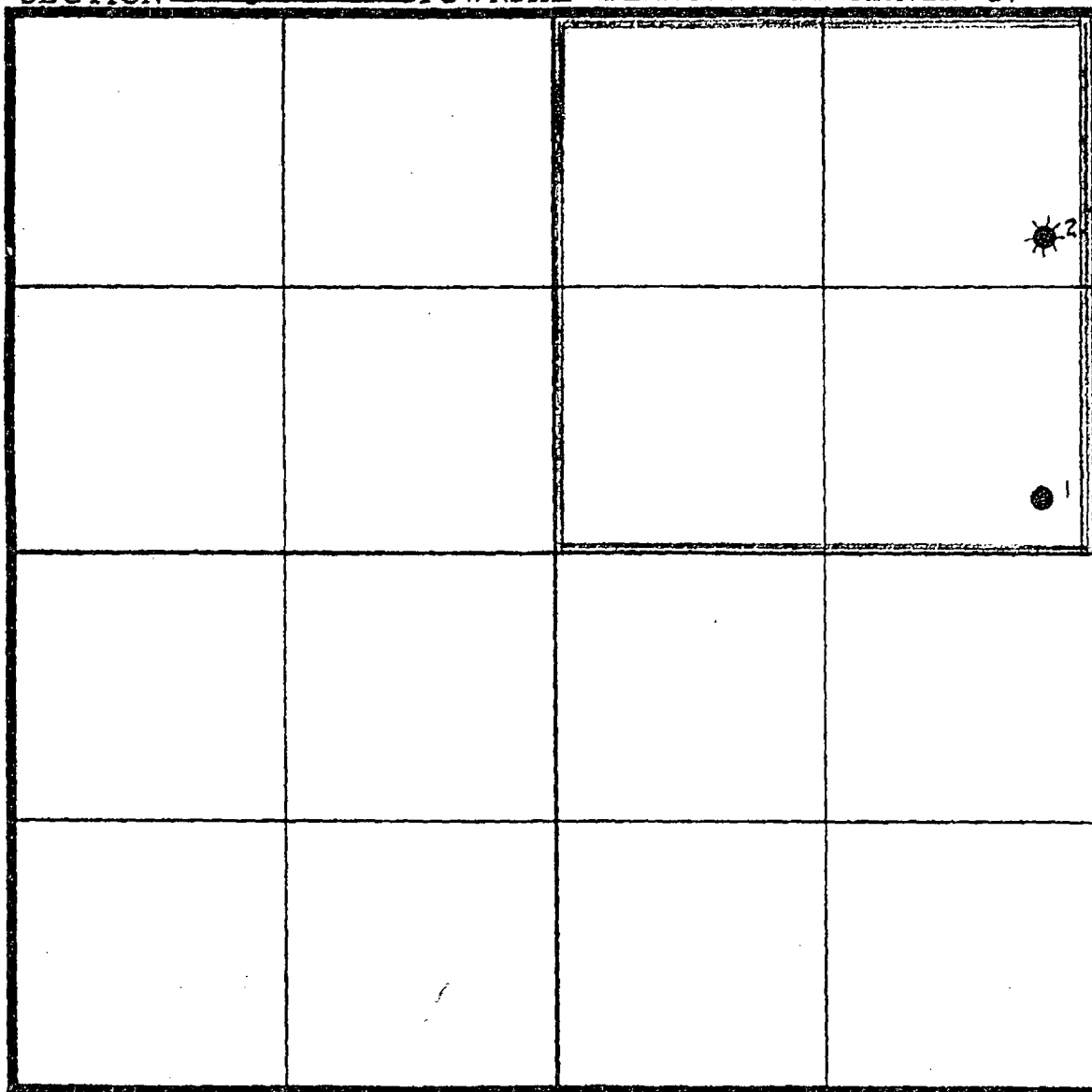
2

Well No.

Name of Producing Formation Yates Pool Langmat

No. Acres Dedicated to the Well 160

SECTION 31 TOWNSHIP 24S RANGE 37E



- I hereby certify that the information given above is true and complete to the best of my knowledge.

Name A. Manno

Position Petroleum Engineer

Representing SO. CAL. PET. CORP.

Address Box 1071, Midland, Texas

(over)

Submit 3 Copies  
Appropriate District Office  
DISTRICT I  
P.O. Box 1980, Hobbs, NM 88240

DISTRICT II  
P.O. Drawer DD, Artesia, NM 88210

DISTRICT III  
1000 Rio Brazos Rd., Aztec, NM 87410

State of New Mexico  
Energy, Minerals and Natural Resources Department

## OIL CONSERVATION DIVISION

P.O. Box 2088

Santa Fe, New Mexico 87504-2088

Form C-104  
Revised 1-1-89  
See Instructions  
at Bottom of Page

### REQUEST FOR ALLOWABLE AND AUTHORIZATION TO TRANSPORT OIL AND NATURAL GAS

Operator <b>Lewis B. Burleson, Inc.</b>		Well API No.
Address <b>P. O. Box 2479 Midland, Texas 79702</b>		
Reason(s) for Filing (Check proper box) <input type="checkbox"/> Other (Please explain)		
New Well <input type="checkbox"/>	Change in Transporter of: Oil <input type="checkbox"/> Dry Gas <input checked="" type="checkbox"/>	To be effective <b>11/1/91</b>
Recompletion <input type="checkbox"/>	Casinghead Gas <input type="checkbox"/> Condensate <input type="checkbox"/>	
Change in Operator <input type="checkbox"/>		
If change of operator give name and address of previous operator		

### II. DESCRIPTION OF WELL AND LEASE

Lease Name <b>Martin A</b>	Well No. <b>2</b>	Pool Name, including Formation <b>Talmt. Gas T-Y-5R</b>	Kind of Lease State, Federal or Fee	Lease No.
Location Unit Letter <b>A</b> : <b>990</b> Feet From The <b>North</b> Line and <b>330</b> Feet From The <b>East</b> Line Section <b>31</b> Township <b>24-5</b> Range <b>37-E</b> , NMPM, <b>Loa</b> County				

### III. DESIGNATION OF TRANSPORTER OF OIL AND NATURAL GAS

Name of Authorized Transporter of Oil <input checked="" type="checkbox"/> or Condensate <input checked="" type="checkbox"/>	Address (Give address to which approved copy of this form is to be sent)	
Name of Authorized Transporter of Casinghead Gas <input type="checkbox"/> or Dry Gas <input checked="" type="checkbox"/>	Address (Give address to which approved copy of this form is to be sent)	
<b>Sid Richardson Carbon &amp; Gasoline Co.</b>	<b>1st City Bank Tower 201 Main Ft Worth, TX 76102</b>	
If well produces oil or liquids, give location of tanks.	Unit	Sec.
If this production is commingled with that from any other lease or pool, give commingling order number.	Twsp.	Rge.

### IV. COMPLETION DATA

Designate Type of Completion - (X)	Oil Well	Gas Well	New Well	Workover	Deepen	Plug Back	Same Res'v	Diff Res'v
Date Spudded	Date Compl. Ready to Prod.		Total Depth			P.B.T.D.		
Elevations (DF, RKB, RT, GR, etc.)	Name of Producing Formation		Top Oil/Gas Pay			Tubing Depth		
Perforations						Depth Casing Shoe		

### TUBING, CASING AND CEMENTING RECORD

HOLE SIZE	CASING & TUBING SIZE	DEPTH SET	SACKS CEMENT

### V. TEST DATA AND REQUEST FOR ALLOWABLE

**OIL WELL** (Test must be after recovery of total volume of load oil and must be equal to or exceed top allowable for this depth or be for full 24 hours.)

Date First New Oil Run To Tank	Date of Test	Producing Method (Flow, pump, gas lift, etc.)	
Length of Test	Tubing Pressure	Casing Pressure	Choke Size
Actual Prod. During Test	Oil - Bbls.	Water - Bbls.	Gas - MCF

### GAS WELL

Actual Prod. Test - MCF/D	Length of Test	Bbls. Condensate/MMCF	Gravity of Condensate
Testing Method (pilot, back pr.)	Tubing Pressure (Shut-in)	Casing Pressure (Shut-in)	Choke Size

### VI. OPERATOR CERTIFICATE OF COMPLIANCE

I hereby certify that the rules and regulations of the Oil Conservation Division have been complied with and that the information given above is true and complete to the best of my knowledge and belief.

Signature Sharon Beaver  
Printed Name **Sharon Beaver** Production Clerk  
Date **November 4, 1991** Title **(915)-683-2422**  
Telephone No.

### OIL CONSERVATION DIVISION

Date Approved **NOV 15 1991**

By ORIGINAL SIGNED BY JERRY SEXTON  
DISTRICT I SUPERVISOR

Title

### INSTRUCTIONS: This form is to be filed in compliance with Rule 1104

- 1) Request for allowable for newly drilled or deepened well must be accompanied by tabulation of deviation tests taken in accordance with Rule 111.
- 2) All sections of this form must be filled out for allowable on new and recompleted wells.
- 3) Fill out only Sections I, II, III, and VI for changes of operator, well name or number, transporter, or other such changes.
- 4) Separate Form C-104 must be filed for each well to be tested.



# WELL LOCATION AND ACREAGE DEDICATION

Supplies C-12a  
Effective 1-1-65

All distances must be from the outer boundaries of the Section.

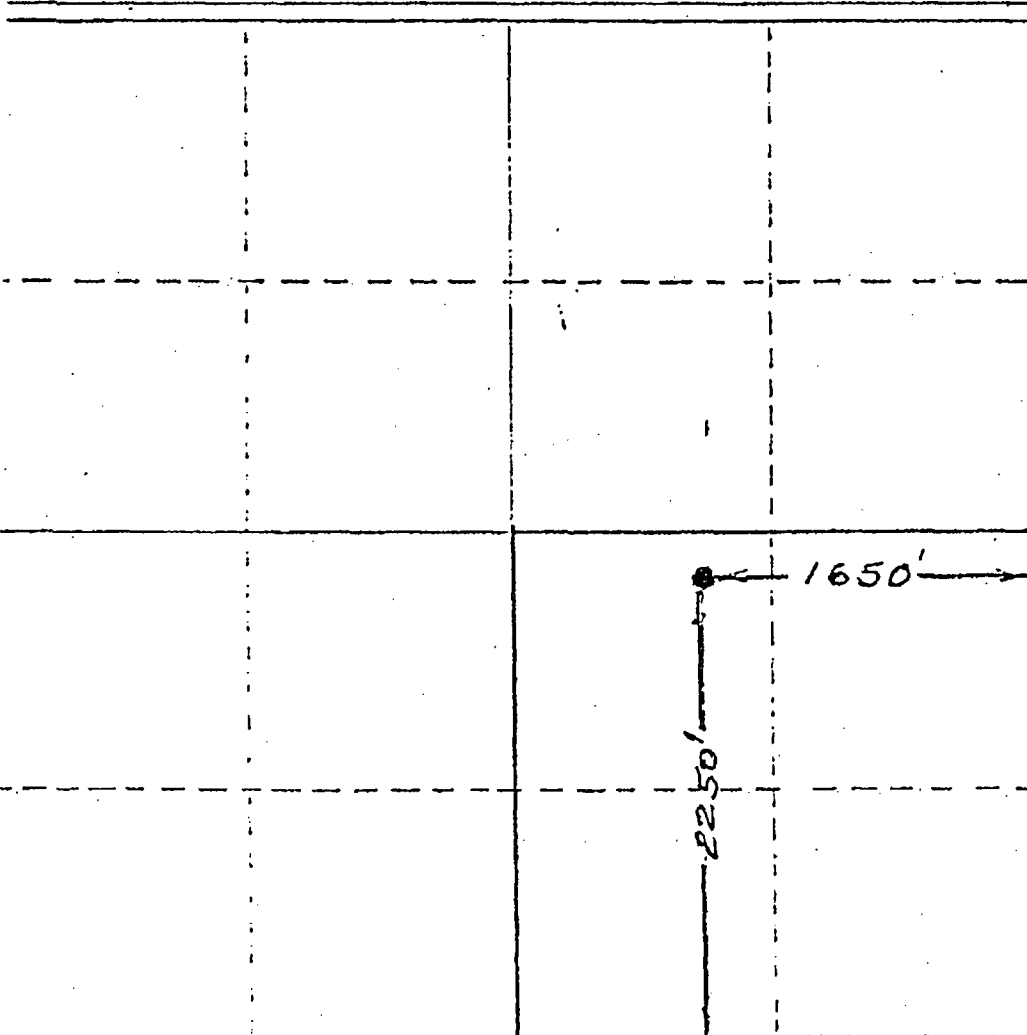
Owner <b>GETTY OIL COMPANY</b>			Lease <b>J.W. Sherrell</b>			Well No. <b>9</b>		
Letter <b>J</b>	Section <b>31</b>	Township <b>24S.</b>	Range <b>37E.</b>	County <b>10a</b>				
Well Footage Location of Well:								
<b>2250</b>		Feet from the <b>SOUTH</b>		Line and <b>1650</b>		Feet from the <b>East</b>		Line
and Level Elev. <b>3224</b>		Producing Formation <b>Yates</b>		Pool <b>Jalmat Yates (Gas)</b>		Dedicated Acreage <b>160</b>		Acreage

- Outline the acreage dedicated to the subject well by colored pencil or machine marks on the plat below.
- If more than one lease is dedicated to the well, outline each and identify the ownership thereof (both as to working interest and royalty).
- If more than one lease of different ownership is dedicated to the well, have the interests of all owners been consolidated by communitization, unitization, force-pooling, etc?

☐ Yes ☐ No If answer is "yes," type of consolidation \_\_\_\_\_

If answer is "no," list the owners and tract descriptions which have actually been consolidated. (Use reverse side of this form if necessary.) \_\_\_\_\_

No allowable will be assigned to the well until all interests have been consolidated (by communitization, unitization, forced-pooling, or otherwise) or until a non-standard unit, eliminating such interests, has been approved by the Commission.



## CERTIFICATION

I hereby certify that the information contained herein is true and complete to the best of my knowledge and belief.

Name  
*David A. Baker*

Position  
**Area Superintendent**

Company  
**Getty Oil Company**

Date  
**1-24-79**

I hereby certify that the well location shown on this plat was plotted from field notes of actual surveys made by me or under my supervision, and that the same is true and correct to the best of my knowledge and belief.

Date Survey  
**1-24-1979**

Registered Professional Engineer and/or Land Surveyor  
**6401**

Certificate  
**STATE OF NEW MEXICO**

330 630 930 1230 1530 1830 2130 2430 2730 3030 3330 3630 3930 4230 4530 4830 5130 5430 5730 6030 6330 6630 6930 7230 7530 7830 8130 8430 8730 9030 9330 9630 9930 10230 10530 10830 11130 11430 11730 12030 12330 12630 12930 13230 13530 13830 14130 14430 14730 15030 15330 15630 15930 16230 16530 16830 17130 17430 17730 18030 18330 18630 18930 19230 19530 19830 20130 20430 20730 21030 21330 21630 21930 22230 22530 22830 23130 23430 23730 24030 24330 24630 24930 25230 25530 25830 26130 26430 26730 27030 27330 27630 27930 28230 28530 28830 29130 29430 29730 30030 30330 30630 30930 31230 31530 31830 32130 32430 32730 33030 33330 33630 33930 34230 34530 34830 35130 35430 35730 36030 36330 36630 36930 37230 37530 37830 38130 38430 38730 39030 39330 39630 39930 40230 40530 40830 41130 41430 41730 42030 42330 42630 42930 43230 43530 43830 44130 44430 44730 45030 45330 45630 45930 46230 46530 46830 47130 47430 47730 48030 48330 48630 48930 49230 49530 49830 50130 50430 50730 51030 51330 51630 51930 52230 52530 52830 53130 53430 53730 54030 54330 54630 54930 55230 55530 55830 56130 56430 56730 57030 57330 57630 57930 58230 58530 58830 59130 59430 59730 60030 60330 60630 60930 61230 61530 61830 62130 62430 62730 63030 63330 63630 63930 64230 64530 64830 65130 65430 65730 66030 66330 66630 66930 67230 67530 67830 68130 68430 68730 69030 69330 69630 69930 70230 70530 70830 71130 71430 71730 72030 72330 72630 72930 73230 73530 73830 74130 74430 74730 75030 75330 75630 75930 76230 76530 76830 77130 77430 77730 78030 78330 78630 78930 79230 79530 79830 80130 80430 80730 81030 81330 81630 81930 82230 82530 82830 83130 83430 83730 84030 84330 84630 84930 85230 85530 85830 86130 86430 86730 87030 87330 87630 87930 88230 88530 88830 89130 89430 89730 90030 90330 90630 90930 91230 91530 91830 92130 92430 92730 93030 93330 93630 93930 94230 94530 94830 95130 95430 95730 96030 96330 96630 96930 97230 97530 97830 98130 98430 98730 99030 99330 99630 99930 100230 100530 100830 101130 101430 101730 102030 102330 102630 102930 103230 103530 103830 104130 104430 104730 105030 105330 105630 105930 106230 106530 106830 107130 107430 107730 108030 108330 108630 108930 109230 109530 109830 110130 110430 110730 111030 111330 111630 111930 112230 112530 112830 113130 113430 113730 114030 114330 114630 114930 115230 115530 115830 116130 116430 116730 117030 117330 117630 117930 118230 118530 118830 119130 119430 119730 120030 120330 120630 120930 121230 121530 121830 122130 122430 122730 123030 123330 123630 123930 124230 124530 124830 125130 125430 125730 126030 126330 126630 126930 127230 127530 127830 128130 128430 128730 129030 129330 129630 129930 130230 130530 130830 131130 131430 131730 132030 132330 132630 132930 133230 133530 133830 134130 134430 134730 135030 135330 135630 135930 136230 136530 136830 137130 137430 137730 138030 138330 138630 138930 139230 139530 139830 140130 140430 140730 141030 141330 141630 141930 142230 142530 142830 143130 143430 143730 144030 144330 144630 144930 145230 145530 145830 146130 146430 146730 147030 147330 147630 147930 148230 148530 148830 149130 149430 149730 150030 150330 150630 150930 151230 151530 151830 152130 152430 152730 153030 153330 153630 153930 154230 154530 154830 155130 155430 155730 156030 156330 156630 156930 157230 157530 157830 158130 158430 158730 159030 159330 159630 159930 160230 160530 160830 161130 161430 161730 162030 162330 162630 162930 163230 163530 163830 164130 164430 164730 165030 165330 165630 165930 166230 166530 166830 167130 167430 167730 168030 168330 168630 168930 169230 169530 169830 170130 170430 170730 171030 171330 171630 171930 172230 172530 172830 173130 173430 173730 174030 174330 174630 174930 175230 175530 175830 176130 176430 176730 177030 177330 177630 177930 178230 178530 178830 179130 179430 179730 180030 180330 180630 180930 181230 181530 181830 182130 182430 182730 183030 183330 183630 183930 184230 184530 184830 185130 185430 185730 186030 186330 186630 186930 187230 187530 187830 188130 188430 188730 189030 189330 189630 189930 190230 190530 190830 191130 191430 191730 192030 192330 192630 192930 193230 193530 193830 194130 194430 194730 195030 195330 195630 195930 196230 196530 196830 197130 197430 197730 198030 198330 198630 198930 199230 199530 199830 200130 200430 200730 201030 201330 201630 201930 202230 202530 202830 203130 203430 203730 204030 204330 204630 204930 205230 205530 205830 206130 206430 206730 207030 207330 207630 207930 208230 208530 208830 209130 209430 209730 210030 210330 210630 210930 211230 211530 211830 212130 212430 212730 213030 213330 213630 213930 214230 214530 214830 215130 215430 215730 216030 216330 216630 216930 217230 217530 217830 218130 218430 218730 219030 219330 219630 219930 220230 220530 220830 221130 221430 221730 222030 222330 222630 222930 223230 223530 223830 224130 224430 224730 225030 225330 225630 225930 226230 226530 226830 227130 227430 227730 228030 228330 228630 228930 229230 229530 229830 230130 230430 230730 231030 231330 231630 231930 232230 232530 232830 233130 233430 233730 234030 234330 234630 234930 235230 235530 235830 236130 236430 236730 237030 237330 237630 237930 238230 238530 238830 239130 239430 239730 240030 240330 240630 240930 241230 241530 241830 242130 242430 242730 243030 243330 243630 243930 244230 244530 244830 245130 245430 245730 246030 246330 246630 246930 247230 247530 247830 248130 248430 248730 249030 249330 249630 249930 250230 250530 250830 251130 251430 251730 252030 252330 252630 252930 253230 253530 253830 254130 254430 254730 255030 255330 255630 255930 256230 256530 256830 257130 257430 257730 258030 258330 258630 258930 259230 259530 259830 260130 260430 260730 261030 261330 261630 261930 262230 262530 262830 263130 263430 263730 264030 264330 264630 264930 265230 265530 265830 266130 266430 266730 267030 267330 267630 267930 268230 268530 268830 269130 269430 269730 270030 270330 270630 270930 271230 271530 271830 272130 272430 272730 273030 273330 273630 273930 274230 274530 274830 275130 275430 275730 276030 276330 276630 276930 277230 277530 277830 278130 278430 278730 279030 279330 279630 279930 280230 280530 280830 281130 281430 281730 282030 282330 282630 282930 283230 283530 283830 284130 284430 284730 285030 285330 285630 285930 286230 286530 286830 287130 287430 287730 288030 288330 288630 288930 289230 289530 289830 290130 290430 290730 291030 291330 291630 291930 292230 292530 292830 293130 293430 293730 294030 294330 294630 294930 295230 295530 295830 296130 296430 296730 297030 297330 297630 297930 298230 298530 298830 299130 299430 299730 300030 300330 300630 300930 301230 301530 301830 302130 302430 302730 303030 303330 303630 303930 304230 304530 304830 305130 305430 305730 306030 306330 306630 306930 307230 307530 307830 308130 308430 308730 309030 309330 309630 309930 310230 310530 310830 311130 311430 311730 312030 312330 312630 312930 313230 313530 313830 314130 314430 314730 315030 315330 315630 315930 316230 316530 316830 317130 317430 317730 318030 318330 318630 318930 319230 319530 319830 320130 320430 320730 321030 321330 321630 321930 322230 322530 322830 323130 323430 323730 324030 324330 324630 324930 325230 325530 325830 326130 326430 326730 327030 327330 327630 327930 328230 328530 328830 329130 329430 329730 330030 330330 330630 330930 331230 331530 331830 332130 332430 332730 333030 333330 333630 333930 334230 334530 334830 335130 335430 335730 336030 336330 336630 336930 337230 337530 337830 338130 338430 338730 339030 339330 339630 339930 340230 340530 340830 341130 341430 341730 342030 342330 342630 342930 343230 343530 343830 344130 344430 344730 345030 345330 345630 345930 346230 346530 346830 347130 347430 347730 348030 348330 348630 348930 349230 349530 349830 350130 350430 350730 351030 351330 351630 351930 352230 352530 352830 353130 353430 353730 354030 354330 354630 354930 355230 355530 355830 356130 356430 356730 357030 357330 357630 357930 358230 358530 358830 359130 359430 359730 360030 360330 360630 360930 361230 361530 361830 362130 362430 362730 363030 363330 363630 363930 364230 364530 364830 365130 365430 365730 366030 366330 366630 366930 367230 367530 367830 368130 368430 368730 369030 369330 369630 369930 370230 370530 370830 371130 371430 371730 372030 372330 372630 372930 373230 373530 373830 374130 374430 374730 375030 375330 375630 375930 376230 376530 376830 377130 377430 377730 378030 378330 378630 378930 379230 379530 379830 380130 380430 380730 381030 381330 381630 381930 382230 382530 382830 383130 383430 383730 384030 384330 384630 384930 385230 385530 385830 386130 386430 386730 387030 387330 387630 387930 388230 388530 388830 389130 389430 389730 390030 390330 390630 390930 391230 391530 391830 392130 392430 392730 393030 393330 393630 393930 394230 394530 394830 395130 395430 395730 396030 396330 396630 396930 397230 397530 397830 398130 398430 398730 399030 399330 399630 399930 400230 400530 400830 401130 401430 401730 402030 402330 402630 402930 403230 403530 403830 404130 404430 404730 405030 405330 405630 405930 406230 406530 406830 407130 407430 407730 408030 408330 408630 408930 409230 409530 409830 410130 410430 410730 411030 411330 411630 411930 412230 412530 412830 413130 413430 413730 414030 414330 414630 414930 415230 415530 415830 416130 416430 416730 417030 417330 417630 417930 418230 418530 418830 419130 419430 419730 420030 420330 420630 420930 421230 421530 421830 422130 422430 422730 423030 423330 423630 423930 424230 424530 424830 425130 425430 425730 426030 426330 426630 426930 427230 427530 427830 428130 428430 428730 429030 429330 429630 429930 430230 430530 430830 431130 431430 431730 432030 432330 432630 432930 433230 433530 433830 434130 434430 434730 435030 435330 435630 435930 436230 436530 436830 437130 437430 437730 438030 438330 438630 438930 439230 439530 439830 440130 440430 440730 441030 441330 441630 441930 442230 442530 442830 443130 443430 443730 444030 444330 444630 444930 445230 445530 445830 446130 446430 446730 447030 447330 447630 447930 448230 448530 448830 449130 449430 449730 450030 450330 450630 450930 451230 451530 451830 452130 452430 452730 453030 453330 453630 453930 454230 454530 454830 455130 455430 455730 456030 456330 456630 456930 457230 457530 457830 458130 458430 458730 459030 459330 459630 459930 460230 460530 460830 461130 461430 461730 462030 462330 462630 462930 463230 463530 463830 464130 464430 464730 465030 465330 465630 465930 466230 466530 466830 467130 467430 467730 468030 468330 468630 468930 469230 469530 469830 470130 470430 470730 471030 471330 471630 471930 472230 472530 472830 473130 473430 473730 474030 474330 474630 474930 475230 475530 475830 476130 476430 476730 477030 477330 477630 477930 478230 478530 478830 479130 479430 479730 480030 480330 480630 480930 481230 481530 481830 482130 482430 482730 483030

Submit to Appropriate  
District Office  
State Lease - 6 copies  
Fee Lease - 5 copies

State of New Mexico  
Energy, Minerals and Natural Resources Department

Form C-105  
Revised 1-1-89

# OIL CONSERVATION DIVISION

P.O. Box 2088

Santa Fe, New Mexico 87504-2088

DISTRICT I  
P.O. Box 1980, Hobbs, NM 88240

DISTRICT II  
P.O. Drawer DD, Artesia, NM 88210

DISTRICT III  
1000 Rio Brazos Rd., Aztec, NM 87410

WELL API NO.

30-025-26070

5. Indicate Type of Lease

STATE ☐

FEE ☒

6. State Oil & Gas Lease No.

## WELL COMPLETION OR RECOMPLETION REPORT AND LOG

1a. Type of Well:

OIL WELL ☐

GAS WELL ☒

DRY ☐

OTHER ☐

b. Type of Completion:

NEW  
WELL ☐

WORK  
OVER ☐

DEEPEN ☐

PLUG  
BACK ☐

DPP  
RESVR ☒

OTHER ☐

Add More Perfs

7. Lease Name or Unit Agreement Name

J.W. Sherrell

2. Name of Operator

Doyle Hartman

8. Well No.

9

3. Address of Operator

P.O. Box 10426 Midland, Texas 79702

9. Pool name or Wildcat

Jalmat (Tansil-Yates-7R)

4. Well Location

Unit Letter J : 2250 Feet From The South Line and 1650 Feet From The East Line

Section 31 Township 24-S Range 37-E NMPM Lea County

10. Date Spudded

6-29-78 orig

11-5-89 recomp

11. Date T.D. Reached

9-9-78 orig

12. Date Compl. (Ready to Prod.)

orig 9-16-78

recomp 11-15-89

13. Elevations (DF & RKB, RT, GR, etc.)

3224 GL

14. Elev. Casinghead

3227

15. Total Depth

3250

16. Plug Back T.D.

3219

17. If Multiple Compl. How Many Zones?

-

18. Intervals Drilled By

Rotary Tools

0-3250

Cable Tools

19. Producing Interval(s), of this completion - Top, Bottom, Name

Yates - 7 Rivers

20. Was Directional Survey Made

No

21. Type Electric and Other Logs Run

Original DLL, MLL, GRC, CDL, CN

22. Was Well Cored

No

## CASING RECORD (Report all strings set in well) \* Same as Original

CASING SIZE	WEIGHT LB/FT.	DEPTH SET	HOLE SIZE	CEMENTING RECORD	AMOUNT PULLED
8 5/8	23 #/ft	495	12 1/4"	400 sxs	Circ
5 1/2	15.5 #/ft	3247	7 7/8"	720 sxs	Circ

## 24. LINER RECORD

SIZE	TOP	BOTTOM	SACKS CEMENT	SCREEN	SIZE	DEPTH SET	PACKER SET
					2 3/8	3171' RKB	None

26. Perforation record (interval, size, and number) 1 SPF  
Old Perfs-2928, 43, 52, 62, 66, 73, 79, 84, 89, 96  
3000, 06, 11, 23, 31, 44, 52, 60, 65, 78, & 88  
21 (.42") Shots

New Perfs Added (11-13-89)-2908, 38, 46, 53, 70, 74, 78.5, & 3016 1 SPF

## 27. ACID, SHOT, FRACTURE, CEMENT, SQUEEZE, ETC.

DEPTH INTERVAL AMOUNT AND KIND MATERIAL USED

2928 - 3088 3000 gals 15% NEFE

## PRODUCTION

Date First Production		Production Method (Flowing, gas lift, pumping - Size and type pump)					Well Status (Prod. or Shut-In)	
11-15-89		Pumping 8.5 spm x 54" strong x 1 1/4" insert pump					Shut-in	
Date of Test	Hours Tested	Choke Size	Prod'n For Test Period	Oil - Bbl.	Gas - MCF	Water - Bbl.	Gas - Oil Ratio	
11-16-89	24	32/64		Trace	257	29		
Flow Tubing Press.	Casing Pressure	Calculated 24-Hour Rate	Oil - Bbl.	Gas - MCF	Water - Bbl.	Oil Gravity - API - (Corr.)		
CSG 36 psig	SICP 86 psig		Trace	257	29			

9. Disposition of Gas (Sold, used for fuel, vented, etc.)

Vented

Test Witnessed By

H. Swain

0. List Attachments

1. I hereby certify that the information shown on both sides of this form is true and complete to the best of my knowledge and belief

Signature



Printed Name

Mike Stewart

Title

Engineer

Date 12-6-89

## WELL LOCATION AND ACREAGE DEDICATION PLAT

MIN 0-102  
Supersedes C-128  
Effective 1-1-65

All distances must be from the outer boundaries of the Section.

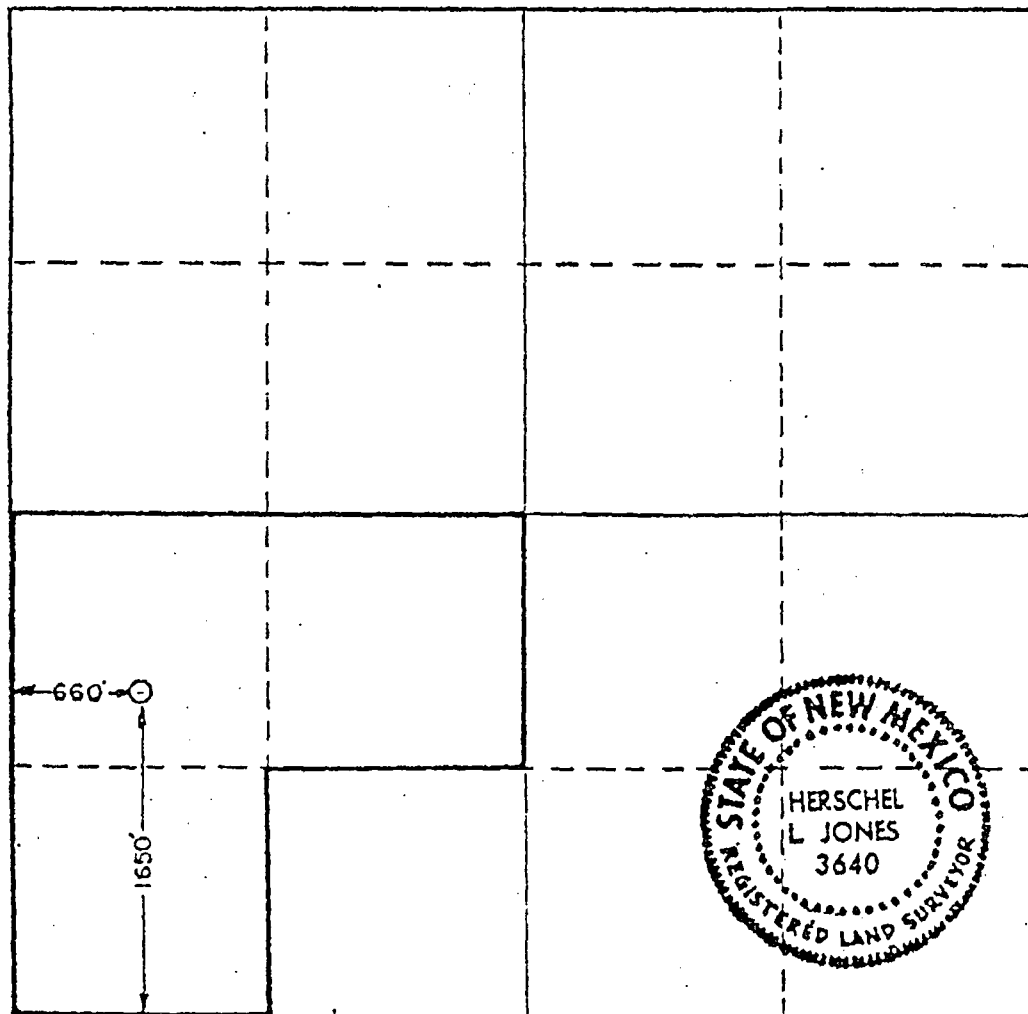
Operator <b>GETTY OIL COMPANY</b>		Lease <b>Skelly "M" State</b>		Well No. <b>4</b>
Init Letter <b>"L"</b>	Section <b>32</b>	Township <b>24 South</b>	Range <b>37 East</b>	County <b>Lea</b>
Actual Footage Location of Well: <b>1650</b> feet from the <b>South</b> line and <b>660</b> feet from the <b>West</b> line				
Ground Level Elev. <b>3238.6</b>	Producing Formation <b>YATES</b>		Pool <b>JALMAT (YATES)</b>	Dedicated Acreage: <b>120</b> Acres

1. Outline the acreage dedicated to the subject well by colored pencil or hachure marks on the plat below.
2. If more than one lease is dedicated to the well, outline each and identify the ownership thereof (both as to working interest and royalty).
3. If more than one lease of different ownership is dedicated to the well, have the interests of all owners been consolidated by communitization, unitization, force-pooling, etc?

☐ Yes ☐ No If answer is "yes," type of consolidation \_\_\_\_\_

If answer is "no," list the owners and tract descriptions which have actually been consolidated. (Use reverse side of this form if necessary.) \_\_\_\_\_

No allowable will be assigned to the well until all interests have been consolidated (by communitization, unitization, forced-pooling, or otherwise) or until a non-standard unit, eliminating such interests, has been approved by the Commission.



## CERTIFICATION

I hereby certify that the information contained herein is true and complete to the best of my knowledge and belief.

Name **ORIGINAL SIGNED BY  
DALE R. CROCKETT**

Position  
**AREA SUPERINTENDENT**

Company  
**GETTY OIL COMPANY**

Date  
**JUNE 19, 1978**

I hereby certify that the well location shown on this plat was plotted from field notes of actual surveys made by me or under my supervision, and that the same is true and correct to the best of my knowledge and belief.

Date Surveyed  
**June 15, 1978**

Registered Professional Engineer  
and/or Land Surveyor

*Herschel L. Jones*  
Certificate No. **3640**

Submit 5 Copies  
Appropriate District Office  
DISTRICT I  
P.O. Box 1980, Hobbs, NM 88240

State of New Mexico  
Energy, Minerals and Natural Resources Department

Form C-104  
Revised 1-1-89  
See Instructions  
at Bottom of Page

DISTRICT II  
P.O. Drawer DD, Artesia, NM 88210

DISTRICT III  
1000 Rio Brazos Rd., Aztec, NM 87410

OIL CONSERVATION DIVISION

P.O. Box 2088  
Santa Fe, New Mexico 87504-2088

REQUEST FOR ALLOWABLE AND AUTHORIZATION  
TO TRANSPORT OIL AND NATURAL GAS

58061

Operator <b>Doyle Hartman</b>		Well API No. <b>30-025-25974</b>
Address <b>P. O. Box 10426 Midland, Texas 79702</b>		
Reason(s) for Filing (Check proper box) <input type="checkbox"/> Other (Please explain)		
New Well <input type="checkbox"/>	Change in Transporter of:	
Recompletion <input type="checkbox"/>	Oil <input type="checkbox"/> Dry Gas <input checked="" type="checkbox"/>	Change in Transporter effective
Change in Operator <input type="checkbox"/>	Casinghead Gas <input type="checkbox"/> Condensate <input type="checkbox"/>	November 1, 1991
If change of operator give name and address of previous operator		

I. DESCRIPTION OF WELL AND LEASE

Lease Name <b>Skelly M State</b>	Well No. <b>4</b>	Pool Name, including Formation <b>Jalmat (T-Y-7R)</b>	Kind of Lease <b>State, Federal or Fed</b>	Lease No. <b>B-1327</b>
Location Unit Letter <b>L</b> : <b>1650</b> Feet From The <b>South</b> Line and <b>660</b> Feet From The <b>West</b> Line Section <b>32</b> Township <b>24S</b> Range <b>37E</b> , <b>NMPM</b> Lea County				

II. DESIGNATION OF TRANSPORTER OF OIL AND NATURAL GAS

Name of Authorized Transporter of Oil <input type="checkbox"/> or Condensate <input type="checkbox"/>	Address (Give address to which approved copy of this form is to be sent)	
Name of Authorized Transporter of Casinghead Gas <input type="checkbox"/> or Dry Gas <input checked="" type="checkbox"/>	Address (Give address to which approved copy of this form is to be sent)	
<b>Sid Richardson Carbon &amp; Gasoline Company</b>	<b>201 Main Street, Fort Worth, Texas 76102</b>	
Well produces oil or liquids, or location of tanks.	Unit	Sec.
	Twp.	Rge.
Is gas actually connected?	When?	

This production is commingled with that from any other lease or pool, give commingling order number.

III. COMPLETION DATA

Designate Type of Completion - (X)	Oil Well	Gas Well	New Well	Workover	Deepen	Plug Back	Same Res'v	Diff Res'v
Is Spudded	Date Compl. Ready to Prod.		Total Depth		P.B.T.D.			
evaluations (DF, RKB, RT, GR, etc.)	Name of Producing Formation		Top Oil/Gas Pay		Tubing Depth			
Locations				Depth Casing Shoe				

TUBING, CASING AND CEMENTING RECORD

HOLE SIZE	CASING & TUBING SIZE	DEPTH SET	SACKS CEMENT

TEST DATA AND REQUEST FOR ALLOWABLE

OIL WELL (Test must be after recovery of total volume of load oil and must be equal to or exceed top allowable for this depth or be for full 24 hours.)			
First New Oil Run To Tank	Date of Test	Producing Method (Flow, pump, gas lift, etc.)	
Length of Test	Tubing Pressure	Casing Pressure	Choke Size
Actual Prod. During Test	Oil - Bbls.	Water - Bbls.	Gas - MCF

GAS WELL			
Actual Prod. Test - MCF/D	Length of Test	Bbls. Condensate/MMCF	Gravity of Condensate
Testing Method (pilot, back pr.)	Tubing Pressure (Shut-in)	Casing Pressure (Shut-in)	Choke Size

IV. OPERATOR CERTIFICATE OF COMPLIANCE

I hereby certify that the rules and regulations of the Oil Conservation Division have been complied with and that the information given above is true and complete to the best of my knowledge and belief.

Signature Patrick K. Worrell  
Printed Name **Patrick K. Worrell** Engineer  
Title  
Date **11/21/91** Telephone No. **915-684-4011**

OIL CONSERVATION DIVISION

Date Approved **NOV 27 1991**

By **ORIGINAL SIGNED BY JERRY CEXTON**  
DISTRICT I SUPERVISOR

Title

**FOR RECORD ONLY MAY 11 1993**

INSTRUCTIONS: This form is to be filed in compliance with Rule 1104

- 1) Request for allowable for newly drilled or deepened well must be accompanied by tabulation of deviation tests taken in accordance with Rule 111.
- 2) All sections of this form must be filled out for allowable on new and recompleted wells.
- 3) Fill out only Sections I, II, III, and VI for changes of operator, well name or number, transporter, or other such changes.
- 4) Separate Form C-104 must be filed for each pool in multiply completed wells



STATE OF NEW MEXICO  
ENERGY AND MINERALS DEPARTMENT  
OIL CONSERVATION DIVISION

JE APODACA  
GOVERNOR

August 16, 1978

NICK FRANKLIN  
SECRETARY

POST OFFICE BOX 2088  
STATE LAND OFFICE BUILDING  
SANTA FE, NEW MEXICO 87501  
(505) 827-2434

Getty Oil Company  
P. O. Box 730  
Hobbs, New Mexico 88240

Administrative Order NSP-1102 \*

Gentlemen:

Reference is made to your application for approval of a 120-acre non-standard gas proration unit consisting of the following acreage in the Jalmat Yates Pool:

LEA COUNTY, NEW MEXICO  
TOWNSHIP 24 SOUTH, RANGE 37 EAST, NMPM  
Section 32: N/2 SW/4 and SW/4 SW/4

It is my understanding that this unit is to be dedicated to your Skelly "M" State Well No. 4 located 1650 feet from the South line and 660 feet from the West line of the above-described Section 32.

By authority granted me under the provisions of Rule 5C3 of Order No. R-1670, you are hereby authorized to operate the above-described acreage as a non-standard unit.

Very truly yours,

JOE D. RAMEY,  
Director

JDR/RLS/dr

cc: Oil Conservation Division - Hobbs  
Oil & Gas Engineering Committee - Hobbs  
Central Leasing - State Land Office - Santa Fe



NEW MEXICO OIL CONSERVATION COMMISSION  
WELL LOCATION AND ACREAGE DEDICATION PLAT

Form C-102  
Supersedes C-128  
Effective 1-1-65

All distances must be from the outer boundaries of the Section.

Atlantic Richfield Company			Lease <u>State 157-E</u>		Well No. <u>1</u>
Alt Letter <u>G</u>	Section <u>32</u>	Township <u>24S</u>	Range <u>37E</u>	County <u>Lea</u>	

Actual Footage Location of Well:

<u>2310</u> feet from the North line and	<u>2310</u> feet from the East line
Ground Level Elev. <u>3251'</u>	Producing Formation <u>Yates</u>
Pool <u>Jalmat Gas</u>	Dedicated Acreage: <u>240</u> Acres

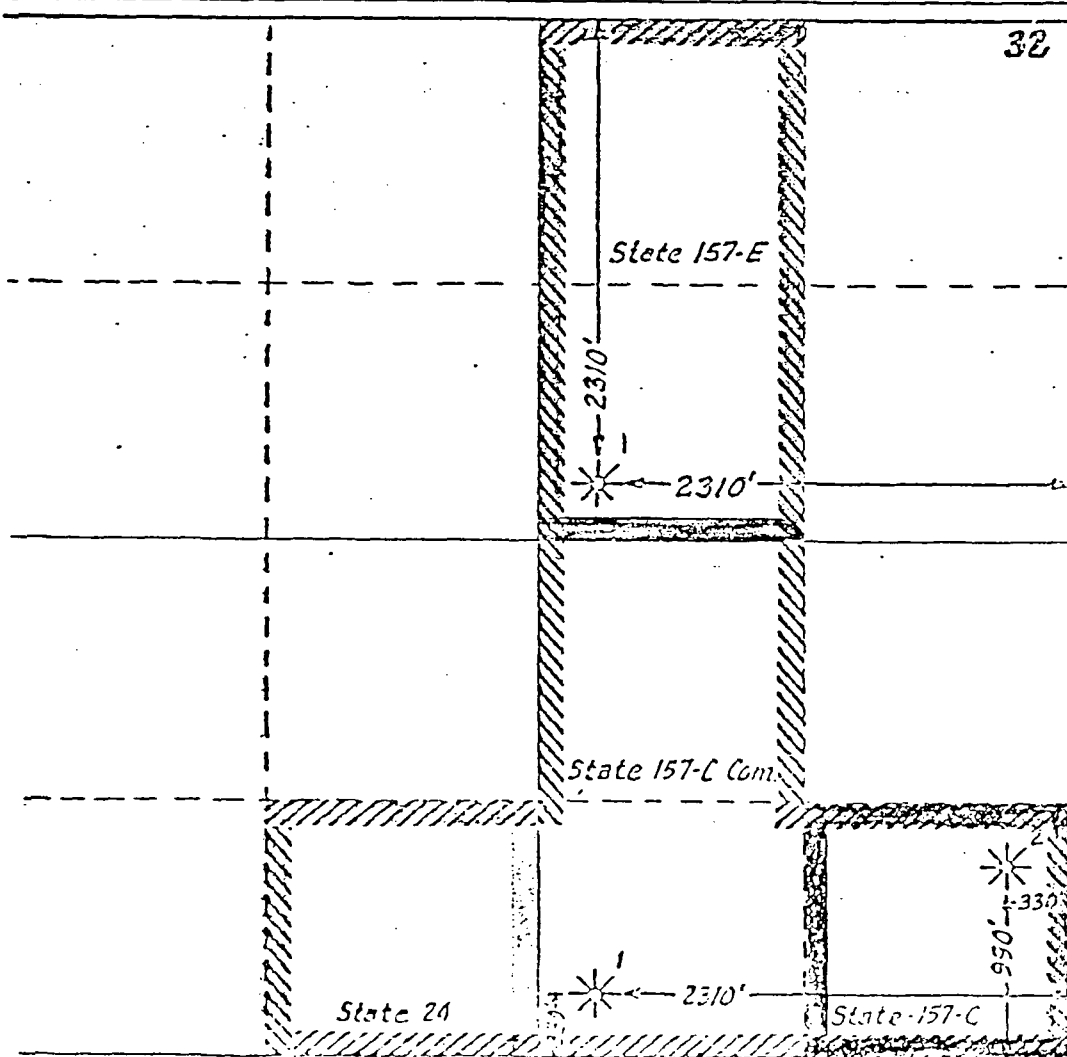
1. Outline the acreage dedicated to the subject well by colored pencil or hachure marks on the plat below.
2. If more than one lease is dedicated to the well, outline each and identify the ownership thereof (both as to working interest and royalty).
3. If more than one lease of different ownership is dedicated to the well, have the interests of all owners been consolidated by communitization, unitization, force-pooling, etc?

☒ Yes ☐ No If answer is "yes," type of consolidation Communitization

If answer is "no," list the owners and tract descriptions which have actually been consolidated. (Use reverse side of this form if necessary.)

No allowable will be assigned to the well until all interests have been consolidated (by communitization, unitization, forced-pooling, or otherwise) or until a non-standard unit, eliminating such interests, has been approved by the Commission.

R-37-E



CERTIFICATION

I hereby certify that the information contained herein is true and complete to the best of my knowledge and belief.

Name Louis C. Suleman

Position  
Engineer

Company  
Atlantic Richfield Company

Date  
November 1, 1974

I hereby certify that the well location shown on this plat was plotted from field notes of actual surveys made by me or under my supervision, and that the same is true and correct to the best of my knowledge and belief.

Date Surveyed

Registered Professional Engineer and/or Land Surveyor

Certificate No.

State of New Mexico  
Energy, Minerals, and Natural Resources Department

Form C-102  
Revised 1-1-89

OIL CONSERVATION DIVISION

P.O. Box 2088

Santa Fe, New Mexico 87504-2088

appropriate  
cc - 4 copies  
asc - 3 copies

DISTRICT I  
P.O. Box 1980, Hobbs, NM 88240

DISTRICT II  
P.O. Drawer DD, Artesia, NM 88210

DISTRICT III  
1000 Rio Brazos Rd., Aztec, NM 87410

WELL LOCATION AND ACREAGE DEDICATION PLAT

All Distances must be from the outer boundaries of the section

Operator ARCO Oil and Gas Company			Lease W.H. HARRISON D WN COM		Well No. 6
Unit Letter N	Section 29	Township 24S	Range 37E	County NMPM	LEA
Actual Footage Location of Well: 660 feet from the SOUTH line and 1980 feet from the WEST line					
Ground level Elev. 3261	Producing Formation YATES SEVEN RIVERS		Pool JALMAT GAS	Dedicated Acreage: 320 Acres	

1. Outline the acreage dedicated to the subject well by colored pencil or hachure on the plat below.
2. If more than one lease is dedicated to the well, outline each and identify the ownership thereof (both as to working interest and royalty).
3. If more than one lease of different ownership is dedicated to the well, have the interest of all owners been consolidated by communitization, unitization, force-pooling, etc.?

☒ Yes ☐ No If answer is "yes" type of consolidation COMMUNITIZATION

If answer is "no" list the owners and tract descriptions which have actually been consolidated. (Use reverse side of this form if necessary.)

No allowable will be assigned to the well until all interests have been consolidated. (by communitization, unitization, forced-pooling, or otherwise) or until a non-standard unit, eliminating such interest, has been approved by the Division.

#2			
#1	#7		
	#6		

OPERATOR CERTIFICATION

I hereby certify that the information contained herein is true and complete to the best of my knowledge and belief.

Signature

Printed Name

JAMES COGBURN

Position

OPER. COORD.

Company

ARCO OIL AND GAS

Date

9/24/93

SURVEYOR CERTIFICATION

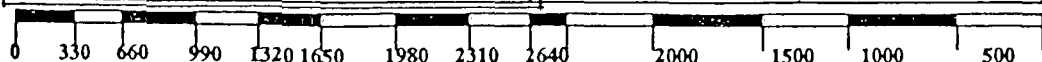
I hereby certify that the well location shown on this plat was plotted from field notes of actual surveys made by me or under my supervision, and that the same is true and correct to the best of my knowledge and belief.

Date Surveyed

Signature & Seal of  
Professional Surveyor

Certificate No.

0



**OIL CONSERVATION DIVISION**  
P.O. Box 2088  
Santa Fe, New Mexico 87504-2088

☐ AMENDED REPORT

**I. REQUEST FOR ALLOWABLE AND AUTHORIZATION TO TRANSPORT**

1 Operator name and Address ARCO Permian P.O. Box 1710 Hobbs, New Mexico 88240		2 OGRID Number 000990
		3 Reason for Filing Code CG 07/96
4 API Number 30-025-24669	5 Pool Name JALMAT TANSIL YATES SRQ GAS	6 Pool Code 79240
7 Property Code 001490	8 Property Name WILLIAM H. HARRISON D WN	9 Well Number 6

**II. Surface Location**

UL or lot no.	Section	Township	Range	Lot. Idn	Feet from the	North/South Line	Feet from the	East/West line	County
N	29	24S	37E		660	S	1980	W	LEA

**Bottom Location**

UL or lot no.	Section	Township	Range	Lot. Idn	Feet from the	North/South Line	Feet from the	East/West line	County

12 Lse Code P	13 Producing Method Code F	14 Gas Connection Date 07/01/96	15 C-129 Permit Number	16 C-129 Effective Date	17 C-129 Expiration Date
------------------	-------------------------------	------------------------------------	------------------------	-------------------------	--------------------------

**III. Oil and Gas Transporters**

18 Transporter OGRID	19 Transporter Name and Address	20 POD	21 O/G	22 POD ULSTR Location and Description
009171	GPM GAS CORPORATION 4001 PENBROOK ODESSA, TX 79762	0478330	G	N-29-24S-37E

**IV. Produced Water**

23 POD	24 POD ULSTR Location and Description
--------	---------------------------------------

**V. Well Completion Data**

25 Spud Date	26 Ready Date	27 TD	28 PSTD	29 Perforations
30 Hole Size	31 Casing & Tubing Size	32 Depth Set	33 Sacks Cement	

**VI. Well Test Data**

34 Date New Oil	35 Gas Delivery Date	36 Test Date	37 Test Length	38 Tbg. Pressure	39 Csg. Pressure
40 Choke Size	41 Oil	42 Water	43 Gas	44 AOF	45 Test Method

NEW MEXICO  
OIL CONSERVATION COMMISSION

Gas Well Plat

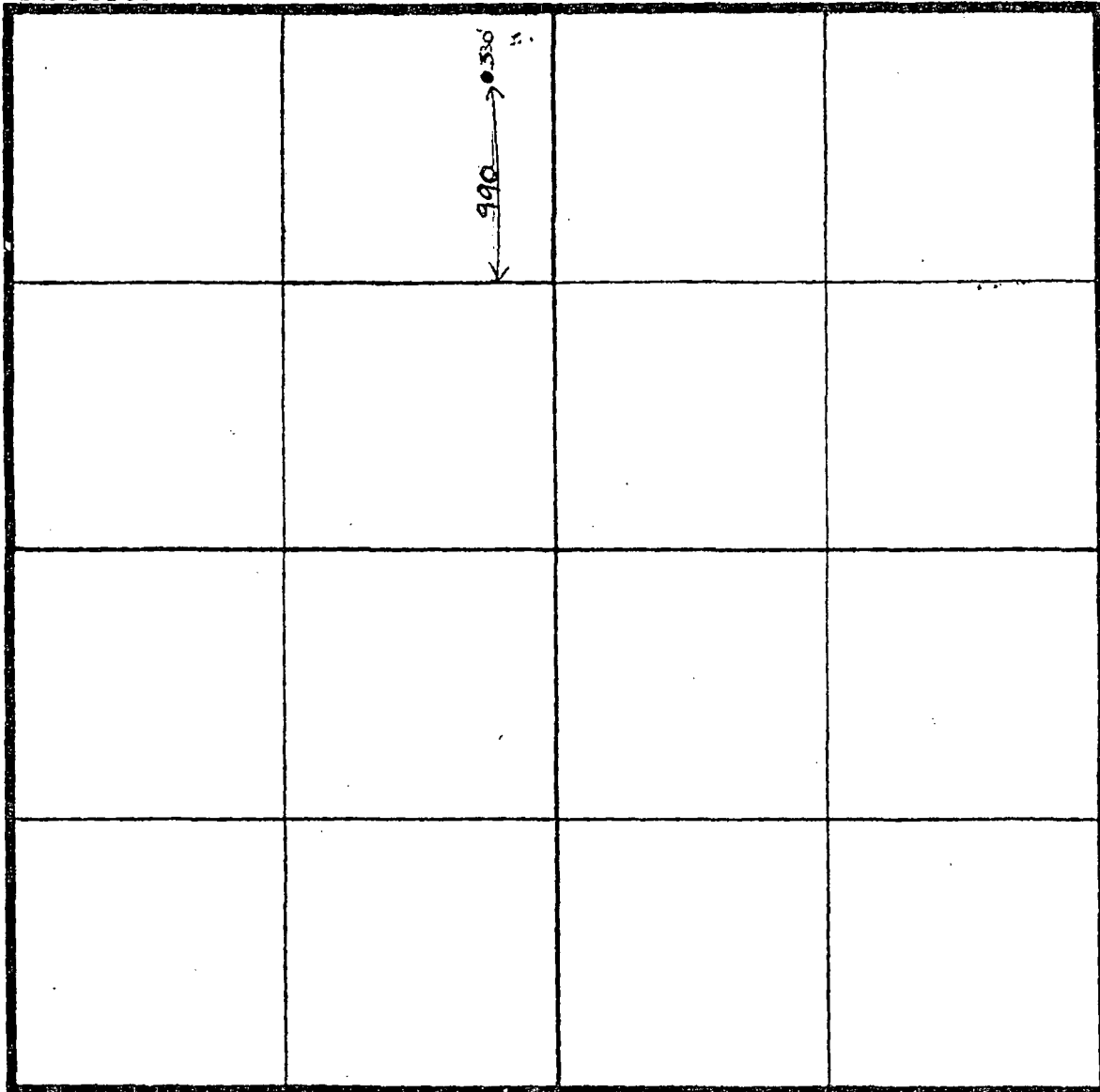
Date December 4th, 1953

Kenwood Oil Company State 1  
Operator Lease Well No.

Name of Producing Formation YATES Pool Langlie-Mattix

No. Acres Dedicated to the Well 40

SECTION 32 TOWNSHIP 24S RANGE 37E



I hereby certify that the information given above is true and complete to the best of my knowledge.

Name John M. Moore  
Position Superintendent  
Representing Kenwood Oil Company  
Address P.O. Box 1027, Odessa, Texas

District I  
PO Box 1980, Hobbs, NM 88241-1980  
District II  
811 South First, Artesia, NM 88210  
District III  
1000 Rio Brazos Rd., Aztec, NM 87410  
District IV  
2040 South Pacheco, Santa Fe, NM 87505

State of New Mexico  
Energy, Minerals & Natural Resources Department

Form C-104  
Revised October 18, 1994  
Instructions on back  
Submit to Appropriate District Office  
5 Copies

OIL CONSERVATION DIVISION  
2040 South Pacheco  
Santa Fe, NM 87505

☐ AMENDED REPORT

I. REQUEST FOR ALLOWABLE AND AUTHORIZATION TO TRANSPORT

Operator name and Address SAGA PETROLEUM Limited Liability Co. of Colorado 415 W. WALL, SUITE 835 MIDLAND, TX 79701		OGRID Number 148967
Reason for Filing Code CH, EFFECTIVE 1-1-97		
API Number 30-025-11310	Pool Name JALMAT, TAN-YATES TRACT(OIL)	Pool Code 33820
Property Code 20324	Property Name STATE	Well Number 1

II. Surface Location

UL or lot no.	Section	Township	Range	Lot Idn	Feet from the	North/South Line	Feet from the	East/West line	County
C	32	24S	37E	-	330	NORTH	2810	WEST	LEA

Bottom Hole Location

UL or lot no.	Section	Township	Range	Lot Idn	Feet from the	North/South line	Feet from the	East/West line	County
Lee Code S	Producing Method Code P	Gas Connection Date		C-129 Permit Number		C-129 Effective Date		C-129 Expiration Date	

III. Oil and Gas Transporters

Transporter OGRID	Transporter Name and Address	POD	O/G	POD ULSTR Location and Description
015694	NARADO Ref. Co. Box 159 ARRESTA, NM 88210	2069D1D	O	C-32-24S-37E
020809	Sid Richardson Smelter Co. FT. WORTH, TX	2069D3D	G	C-32-24S-37E

IV. Produced Water

POD	POD ULSTR Location and Description
2069D5D	

V. Well Completion Data

Spud Date	Ready Date	TD	PSTD	Perforations	DHC, DC, MC
Hole Size	Casing & Tubing Size	Depth Set	Sacks Cement		

VI. Well Test Data

Date New Oil	Gas Delivery Date	Test Date	Test Length	Tbg. Pressure	Cog. Pressure
Choke Size	Oil	Water	Gas	AOF	Test Method

I hereby certify that the rules of the Oil Conservation Division have been complied with and that the information given above is true and complete to the best of my knowledge and belief.

Signature: 

Printed name: J. Charles Farmer

Title: Manager

Date: 2/13/97

Phone: (915)684-4293

OIL CONSERVATION DIVISION

Approved by: ORIGINAL SIGNED BY  
GARY M. MURK

Title: FIELD REP. II

Approval Date: MAR 07 1997

If this is a change of operator fill in the OGRID number and name of the previous operator

Previous Operator Signature:  M. Y. MERCHANT, PRESIDENT

Printed Name: PENROC OIL CORPORATION

Title: Date: 2/7/97

NEW MEXICO OIL CONSERVATION COMMISSION  
WELL LOCATION AND ACREAGE DEDICATION PLAT

Form C-102  
Supersedes C-128  
Effective 1-1-65

All distances must be from the outer boundaries of the Section

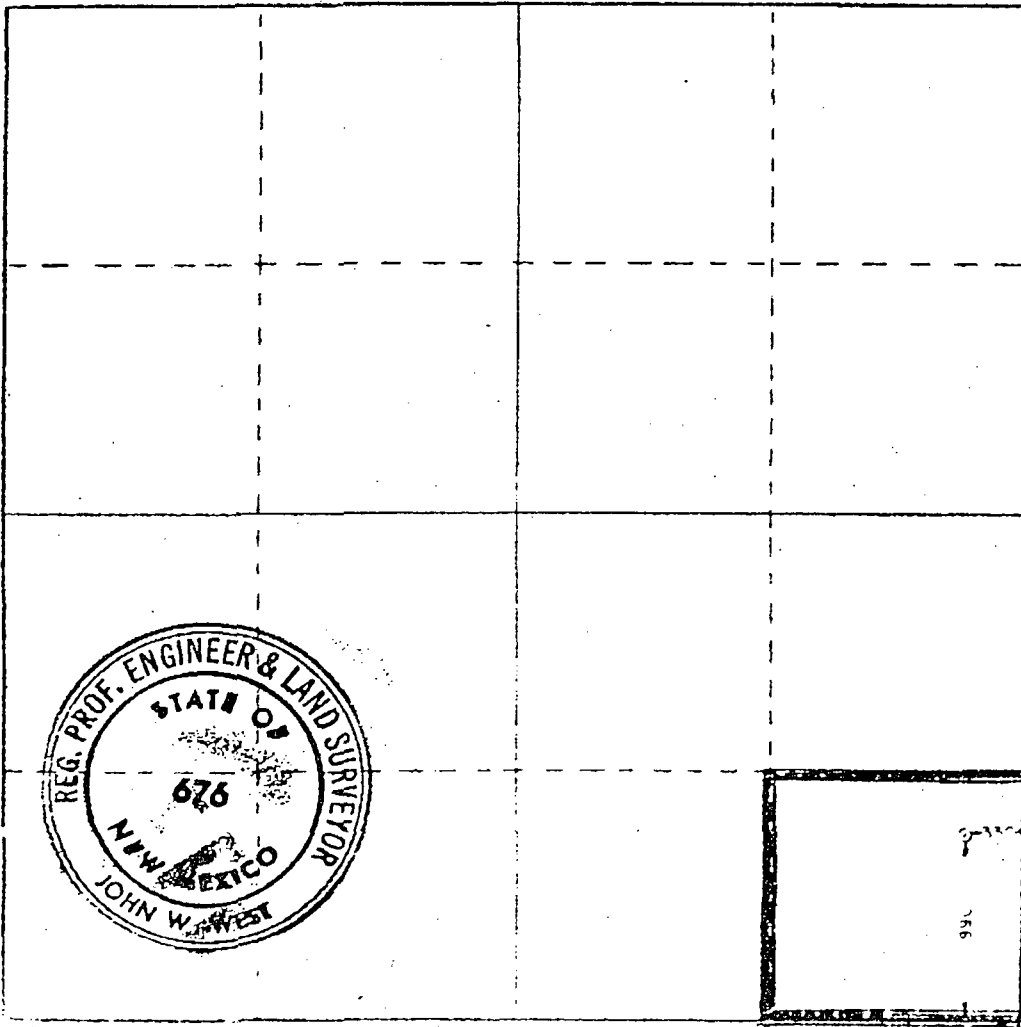
Owner Doyle Hartman			Lease Gulf-Eddie Corrigan			Well No. 1		
Section P	Section 30	Township 24 South	Range 37 East	County Lea				
Distance from the corner of the Section to the location of the well: 990 feet from the South line and 330 feet from the East line								
Well depth 3251.1		Producing Formation Seven Rivers - Queen		Pool Langlie Mattix			Dedicated Acreage 40	

1. Outline the acreage dedicated to the subject well by colored pencil or hachure marks on the plat below.
2. If more than one lease is dedicated to the well, outline each and identify the ownership thereof (both as to working interest and royalty).
3. If more than one lease of different ownership is dedicated to the well, have the interests of all owners been consolidated by communitization, unitization, force-pooling, etc?

☐ Yes ☐ No If answer is "yes," type of consolidation \_\_\_\_\_

If answer is "no," list the owners and tract descriptions which have actually been consolidated (Use reverse side of this form if necessary.) \_\_\_\_\_

No allowable will be assigned to the well until all interests have been consolidated (by communitization, unitization, forced-pooling, or otherwise) or until a non-standard unit, eliminating such interests, has been approved by the Commission.



CERTIFICATION

I hereby certify that the information contained herein is true and complete to the best of my knowledge and belief

*Doyle Hartman*  
Name  
Doyle Hartman

Position  
Operator - Part Owner

Company  
Individual

Date  
9-21-78

I hereby certify that the well location shown on this plat was plotted from field notes of actual surveys made by me or under my supervision and that the same is true and correct to the best of my knowledge and belief

Date of Survey  
September 11, 1978

Signature of Surveyor  
*John W. West*

Certification by  
JOHN W. WEST

01/14/99

14:08

5053935388

OIL REPORTS

002

NO. OF COPIES RECEIVED	
DISTRIBUTION	
SANTA FE	
FILE	
U.S.G.S.	
LAND OFFICE	
OPERATOR	

**NEW MEXICO OIL CONSERVATION COMMISSION  
WELL COMPLETION OR RECOMPLETION REPORT AND LOG**

Form C-105  
Revised 11-1-8

5a. Indicate Type of Lease  
State ☐ Fee ☒

5b. State Oil & Gas Lease No.

7. Unit Agreement Name

8. Form or Lease Name

Gulf - Eddie Corrigan

9. Well No.

1

10. Field and Pool, or Wildcat

Langlie Mattix

12. County

Lea

**10. TYPE OF WELL**

OIL WELL ☐ GAS WELL ☒ DRY ☐ OTHER

**b. TYPE OF COMPLETION**

NEW WELL ☒ WORK OVER ☐ DEEPEN ☐ PLUG BACK ☐ DIFF. RESVR. ☐ OTHER

**2. Name of Operator**

Doyle Hartman

**3. Address of Operator**

508 C & K Petroleum Building, Midland, Texas 79701

**4. Location of Well**

UNIT LETTER P LOCATED 990 FEET FROM THE South LINE AND 330 FEET FROM

THE East LINE OF SEC. 30 TWP. 24S RGE. 37E NMPM

15. Date Spudded 9-29-78 16. Date T.D. Reached 10-6-78 17. Date Compl. (Ready to Prod.) 10-27-78 18. Elevations (DF, RKB, RT, GR, etc.) 3251 G. L. 19. Elev. Casinghead 3251

20. Total Depth 3750 21. Plug Back T.D. 3723 22. If Multiple Compl., How Many --- 23. Intervals Drilled By Rotary Tools 0-3750 Cable Tools ---

**24. Producing Interval(s), of this completion - Top, Bottom, Name**

3364 - 3502 w/17 (Seven Rivers - Queen)

**25. Was Directional Survey Made**

No

**26. Type Electric and Other Logs Run**

CDL-Neutron-GR, Forxo-Guard, GRN-CCL

**27. Was Well Cored**

No

**28. CASING RECORD (Report all strings set in well)**

CASING SIZE	WEIGHT LB. FT.	DEPTH SET	HOLE SIZE	CEMENTING RECORD	AMOUNT PULLED
8 5/8	23	611	12 1/4	350 SX	None
5 1/2	17	3748	7 7/8	700 SX	None

**29. LINER RECORD**

SIZE	TOP	BOTTOM	SACKS CEMENT	SCREEN

**30. TUBING RECORD**

SIZE	DEPTH SET	PACKER SET
2 3/8	3530	None

**31. Perforation Record (Interval, size and number)**

One shot each at: 3364, 3367, 3370, 3373, 3376, 3379, 3382, 3433, 3436, 3439, 3461, 3465, 3468, 3479, 3482, 3485, 3502

**32. ACID, SHOT, FRACTURE, CEMENT SQUEEZE, ETC.**

DEPTH INTERVAL	AMOUNT AND KIND MATERIAL USED
3364 - 3502	A/4800 15% MCA
3364 - 3502	SWF/60,000 + 80,000

**33. PRODUCTION**

Date First Production 10-14-78		Production Method (Flowing, gas lift, pumping - Size and type pump) Pumping/Flowing (8 1/2 x 64 x 1 1/4)				Well Status (Prod. or Shut-in) Shut-in	
Date of Test 10-27-78	Hours Tested 24	Choke Size 16/64	Prod'n. For Test Period →	Oil - Bbl. ---	Gas - MCF 254	Water - Bbl. 15	Gas - Oil Ratio Dry Gas
Flow Tubing Press. 160	Casing Pressure 160	Calculated 24- Hour Rate →	Oil - Bbl. ---	Gas - MCF 254	Water - Bbl. 15	Oil Gravity - API (Corr.) ---	

**34. Disposition of Gas (sold, used for fuel, vented, etc.)**

Vented

**Test Witnessed By**

James Gray

**35. List of Attachments**

36. I hereby certify that the information shown on both sides of this form is true and complete to the best of my knowledge and belief.

SIGNED Rich M. Cushman TITLE Office Manager DATE 11-15-78

# REQUEST FOR ALLOWABLE AND AUTHORIZATION TO TRANSPORT

<sup>1</sup> Operator name and Address Gruy Petroleum Management Company P.O. Box 140907 Irving, Texas 75014		<sup>2</sup> OGRID Number 162683
<sup>4</sup> API Number 30-0 30-025-26086		<sup>5</sup> Pool Name Langlie Mattix 7Rvrs Q Grayburg
<sup>7</sup> Property Code 21764	<sup>8</sup> Property Name Gulf Eddie Corrigan	<sup>6</sup> Pool Code 37240
		<sup>9</sup> Well Number # 1

## II. <sup>10</sup> Surface Location

UL or lot no.	Section	Township	Range	Lot. Idn	Feet from the	North/South Line	Feet from the	East/West line	County
P	30	24S	37E		990'	South	330'	East	Lea

## <sup>11</sup> Bottom Hole Location

UL or lot no.	Section	Township	Range	Lot. Idn	Feet from the	North/South Line	Feet from the	East/West line	County

<sup>12</sup> Lso Code Fee	<sup>13</sup> Producing Method Code F	<sup>14</sup> Gas Connection Date	<sup>15</sup> C-129 Permit Number	<sup>16</sup> C-129 Effective Date	<sup>17</sup> C-129 Expiration Date
-------------------------------	--	-----------------------------------	-----------------------------------	------------------------------------	-------------------------------------

## III. Oil and Gas Transporters

<sup>18</sup> Transporter OGRID	<sup>19</sup> Transporter Name and Address	<sup>20</sup> POD	<sup>21</sup> O/G	<sup>22</sup> POD ULSTR Location and Description
12852	Keen Service	1836010	0	
7057	El Paso Natural	1836030	6	
7147	El Paso Natural	1836010	0	

## IV. Produced Water

<sup>23</sup> POD	<sup>24</sup> POD ULSTR Location and Description
-------------------	--

## V. Well Completion Data

<sup>25</sup> Spud Date	<sup>26</sup> Ready Date	<sup>27</sup> TD	<sup>28</sup> PSTD	<sup>29</sup> Perforations	<sup>30</sup> DHC, DC, MC
<sup>31</sup> Hole Size	<sup>32</sup> Casing & Tubing Size	<sup>33</sup> Depth Set	<sup>34</sup> Sacks Cement		

## VI. Well Test Data

<sup>35</sup> Date New Oil	<sup>36</sup> Gas Delivery Date	<sup>37</sup> Test Date	<sup>38</sup> Test Length	<sup>39</sup> Tbg. Pressure	<sup>40</sup> Csg. Pressure
<sup>41</sup> Choke Size	<sup>42</sup> Oil	<sup>43</sup> Water	<sup>44</sup> Gas	<sup>45</sup> AOP	<sup>46</sup> Test Method

<sup>47</sup> I hereby certify that the rules of the Oil Conservation Division have been complied with and that the information given above is true and complete to the best of my knowledge and belief.

Signature: *[Signature]*  
 Printed name: R.D. Cronk  
 Title: Vice President of Operations  
 Date: 6/26/97  
 Phone: (972) 401-3111

## OIL CONSERVATION DIVISION

Approved by: ORIGINAL SIGNED BY

Title: GARY WINK  
FIELD REP. II

Approval Date: 5/1/97

<sup>47</sup> If this is a change of operator fill in the OGRID number and name of the previous operator

Kent Beers  
Previous Operator Signature  
Attorney-in-Fact

Burlington Resources Oil & Gas Company 26485

5/1/97

Printed Name

Title

Date



OFFSET OPERATOR NOTIFICATION

1. Arco  
PO Box 1089  
Eunice, NM 88231-1089
2. Gruy Petroleum  
ATTN: Zeno Ferris  
PO Box 140907  
Irving, TX 75014-0907
3. Lewis B. Burleson, Inc.  
PO Box 2479  
Midland, TX 79702
4. Doyle Hartman  
PO Box 10426  
Midland, TX 79702
5. Saga Petroleum Ltd. Liability Co.  
415 W. Wall, Suite 835  
Midland, TX 79701

CMD : ONGARD 01/25/99 14:49:45  
OG6C101 C101-APPLICATION FOR PERMIT TO DRILL OGOMES -TPYA

OGRID Idn : 20451 API Well No: 30 25 34555 APD Status(A/C/P): A  
Opr Name, Addr: SDX RESOURCES INC Aprvl/Cncl Date : 12-28-1998  
PO BOX 5061  
MIDLAND,TX 79704

Prop Idn: 23976 STATE A 32 Well No: 5

	U/L	Sec	Township	Range	Lot	Idn	North/South	East/West
	---	---	-----	-----	-----	-----	-----	-----
Surface Locn : D	32		24S		37E		FTG 710 F N	FTG 660 F W
OCD U/L : D			API County :	25				

Work typ(N/E/D/P/A) : N Well typ(O/G/M/I/S/W/C): O Cable/Rotary (C/R) : F  
Lease typ(F/S/P/N/J/U/I): S Ground Level Elevation : 3243

State Lease No: Multiple Comp (Y/N) : S  
Prpsd Depth : 3500 Prpsd Frmtn : YATES

E0009: Enter data to modify record

PF01 HELP	PF02	PF03 EXIT	PF04 GoTo	PF05	PF06 CONFIRM
PF07	PF08	PF09 PRINT	PF10 C102	PF11 HISTORY	PF12

CMD :  
OG6IWCM

ONGARD  
INQUIRE WELL COMPLETIONS

01/25/99 14:50:36  
OGOMES -TPYA

API Well No : 30 25 11316 Eff Date : 01-01-1997 WC Status : A  
Pool Idn : 33820 JALMAT;TAN-YATES-7 RVRS (OIL)  
OGRID Idn : 148967 SAGA PETROLEUM LIMITED LIABILITY CO.  
Prop Idn : 20324 STATE

Well No : 001  
GL Elevation: 99999

	U/L	Sec	Township	Range	North/South	East/West	Prop/Act (P/A)
	---	---	-----	-----	-----	-----	-----
B.H. Locn : C	32	24S	37E	FTG	330 F N	FTG 2310 F W	A
Lot Identifier:							
Dedicated Acre: 40.00							
Lease Type : S							
Type of consolidation (Comm, Unit, Forced Pooling - C/U/F/O) :							

E6317: No more recs. for this api well no.

PF01 HELP	PF02	PF03 EXIT	PF04 GoTo	PF05	PF06
PF07	PF08	PF09	PF10 NEXT-WC	PF11 HISTORY	PF12 NXTREC

CMD :  
OG5SECTONGARD  
INQUIRE LAND BY SECTION01/25/99 14:49:24  
OGOMES -TPYA  
PAGE NO: 1

Sec : 32 Twp : 24S Rng : 37E Section Type : NORMAL

D 40.00 CS B00148 0015 01/41 SUN EXPL & PROD C U A A	C 40.00 CS B00148 0017 01/41 BURLINGTON RESOUR U A A	B 40.00 CS B01506 0000 12/38 ATLANTIC RICHFIEL C U A	A 40.00 CS B00934 0031 11/38 READING & BATES F U A A A
E 40.00 CS B00148 0015 01/41 SUN EXPL & PROD C U A	F 40.00 CS B00148 0015 01/41 SUN EXPL & PROD C U A A	G 40.00 CS B01506 0000 12/38 ATLANTIC RICHFIEL C U A A	H 40.00 CS B00934 0031 11/38 READING & BATES F U A

PF01 HELP  
PF07 BKWDPF02  
PF08 FWDPF03 EXIT  
PF09 PRINTPF04 GoTo  
PF10 SDIVPF05  
PF11PF06  
PF12

CMD : ONGARD 01/25/99 14:51:38  
OG6IWCM INQUIRE WELL COMPLETIONS OGOMES -TPYA

API Well No : 30 25 25845 Eff Date : 12-01-1998 WC Status : A  
Pool Idn : 79240 JALMAT;TAN-YATES-7 RVRS (PRO GAS)  
OGRID Idn : 20451 SDX RESOURCES INC  
Prop Idn : 23976 STATE A 32

Well No : 004  
GL Elevation: 99999

	U/L	Sec	Township	Range	North/South	East/West	Prop/Act (P/A)
B.H. Locn	: F	32	24S	37E	FTG 1780 F N	FTG 1400 F W	P
Lot Identifier:							
Dedicated Acre:							
Lease Type	: S						
Type of consolidation							

(Comm, Unit, Forced Pooling - C/U/F/O) :

M0025: Enter PF keys to scroll

PF01 HELP	PF02	PF03 EXIT	PF04 GoTo	PF05	PF06
PF07	PF08	PF09	PF10 NEXT-WC	PF11 HISTORY	PF12 NXTREC

OIL CONSERVATION COMMISSION

P. O. BOX 2088

SANTA FE, NEW MEXICO 87501

March 13, 1978

C  
O  
P  
Y  
  
Allied Chemical  
Union Texas Petroleum Division  
1300 Wilco Building  
Midland, Texas 79701

Re: Administrative Order NSP-1087

Gentlemen:

Reference is made to your application for approval of a 120-acre non-standard gas proration unit consisting of the following acreage in the Jalmat Gas Pool:

LEA COUNTY, NEW MEXICO  
TOWNSHIP 24 SOUTH, RANGE 37 EAST, NMPM  
Section 32: NW/4 NW/4 and S/2 NW/4

It is my understanding that this unit is to be dedicated to your State "A-32" Well No. 4 to be located at an unorthodox location 1780 feet from the North line and 1400 feet from the West line of said Section 32.

By authority granted me under Rule 5(c)3 of Order No. R-1670, the above-described acreage is hereby authorized as a non-standard unit.

Very truly yours,

  
JOE D. RAMEY,  
Secretary-Director

JDR/LT/dr

cc: Oil Conservation Commission - Hobbs  
Oil & Gas Engineering Committee - Hobbs  
Central Leasing - State Land Office - Santa Fe



**NEW MEXICO ENERGY, MINERALS  
& NATURAL RESOURCES DEPARTMENT**

November 8, 1999

**SDX Resources, Inc.  
P. O. Box 5061  
Midland, Texas 79704  
Attention: Chuck Morgan**

**Doyle Hartman, Oil Operator  
P. O. Box 10426  
Midland, Texas 79702  
Attention: Doyle Hartman**

**RE: SD-99-14:** *Jalmat Gas Pool development within an existing non-standard 120-acre gas spacing and proration unit ("GPU") comprising the W/2 NW/4 and the SE/4 NW/4 of Section 32, Township 24 South, Range 37 East, NMPM, Lea County, New Mexico, which was approved by Division Administrative Order NSP-1087, issued to Allied Chemical/Union Texas Petroleum Division on March 13, 1978.*

Dear Messrs. Morgan and Hartman:

Reference is made to the following:

(1) SDX Resources, Inc.'s ("SDX") letter of application dated September 16, 1999, which was received by the New Mexico Oil Conservation Division in Santa Fe ("Division") on October 12, 1999, for the following additional infill gas well location to be drilled at an unorthodox gas well location within this existing GPU:

State A-32 Well No. 6 to be drilled 1880 feet from the North line  
and 760 feet from the West line (Unit E) of Section 32;

(2) A letter of objection filed by Mr. Doyle Hartman, an offset operator to this GPU, on October 13, 1999;

(3) The rules currently governing the Jalmat Gas Pool, which include:

- (a) Division Order Nos. R-8170, as amended, and R-10987, as amended;
- (b) Division Rules 605; and
- (c) Division Rule 104.D(3);

(4) Division Administrative Order NSP-1087, issued to Union Texas Petroleum a Division of

Allied Chemical on March 13, 1978, which initially established this 120-acre GPU and had dedicated thereon the State A-32 Well No. 4 (**API No. 30-025-25845**) located at an unorthodox gas well location 1780 feet from the North line and 1400 feet from the West line (Unit F) of Section 32; and


(5) Division Administrative Order SD-99-1, issued to SDX on January 26, 1999, which recognized the State A-32 Well No. 5 (**API No. 30-025-34555**), located at a standard gas well location 710 feet from the North line and 660 feet from the West line (Unit D) of Section 32, as an infill well for this GPU.

Subsequent to the Division's review of this matter, it is found that: (i) this existing 120-acre GPU is currently operated by SDX and is simultaneously dedicated to the two above-described State A-32 Wells No. 4 and 5; (ii) the Jalmat Gas Pool is a prorated gas pool and the rules currently governing this pool do not contain provisions restricting the number of producing gas wells within a spacing and proration unit; (iii) pursuant to these rules the proposed infill well location for the State A-32 Well No. 6 is considered standard for this particular GPU since it is no closer to the outer boundary of this 120-acre GPU; and (iv) Mr. Hartman's letter of objection has no basis.

Therefore, SDX is allowed to simultaneously dedicate Jalmat Gas Pool production from the above described three wells to this existing 120-acre GPU. Furthermore, SDX is permitted to produce the allowable assigned the subject 120-acre GPU from these three wells in any proportion.

Finally, all three of the aforementioned State A-32 Wells No. 4, 5, and 6 and existing 120-acre GPU will be subject to all existing rules, regulations, policies, and procedures applicable to the Jalmat Gas Pool including Division Order No. R-4929, issued in Case No. 5368 dated December 3, 1974.

Sincerely,

  
Lori Wrotenbery  
Director

LW/MES/kv

cc: New Mexico Oil Conservation Division - Hobbs  
New Mexico State Land Office - Santa Fe  
J. E. Gallegos, Legal Counsel for Doyle Hartman - Santa Fe  
Ms. Lori Wrotenbery, Director - NMOCD, Santa Fe  
Rand Carroll, Legal Counsel - NMOCD, Santa Fe  
File: NSP-1087  
SD-99-1 /