

PNRM0813053667

C-103 Received 4-24-2008
DHC No. Assigned 5-9-2008

Order Number		API Number		Operator		County	
HOB-0244-A		30-025-38684		Apache Corporation		Lea	
Order Date		Well Name		Number		Location	
		Gill Deep		006		<div> <div>K</div> <div>UL</div> </div> <div> <div>31</div> <div>Sec</div> </div> <div> <div>215</div> <div>T (+Dir)</div> </div> <div> <div>37E</div> <div>R (+Dir)</div> </div>	
				Oil %	Gas %		
Pool 1	06660	Blinberry Oil & Gas (Oil)		50%	68%		
Pool 2	60240	Tubb Oil & Gas (Oil)		33%	12%		
Pool 3	19190	Drinkard		17%	20%		
Pool 4							
Comments: Work completed effective _____ Work cancelled effective _____							

Posted to
KBOM &
5-9-2008

3

30-025-38684
HOB-0244-A

DOWNHOLE COMMINGLE CALCULATIONS:

OPERATOR: Apache Corporation

PROPERTY NAME: Gill Deep

WNULSTR: 6-K, 31-21-37

SECTION I:

POOL NO. 1 Blinebry Oil & Gas (Oil) ALLOWABLE AMOUNT 107 428 MCF 4000

POOL NO. 2 Tubb Oil & Gas (Oil) 142 284 MCF 2000

POOL NO. 3 Drinkard 142 852 MCF 6000

POOL NO. 4 _____ MCF

POOL TOTALS _____

SECTION II:

POOL NO. 1 Blinebry Oil & Gas (Oil) Oil Gas
50% 68%

POOL NO. 2 Tubb Oil & Gas (Oil) 33% 12%

POOL NO. 3 Drinkard 17% 20%

POOL NO. 4 _____

OIL

GAS

SECTION III:

107 ÷ 50% = 214

SECTION IV:

214 × 50% = 107.0 (107)

214 × 33% = 70.62 (71)

214 × 17% = 36.38 (36)

Submit 3 Copies To Appropriate District
Office
District I
1625 N. French Dr., Hobbs, NM 88240
District II
1301 W. Grand Ave., Artesia, NM 88210
District III
1000 Rio Brazos Rd., Aztec, NM 87410
District IV
1000 S. St. Francis Dr., Santa Fe, NM
87505

State of New Mexico
Energy, Minerals and Natural Resources

Form C-103
May 27, 2004

OIL CONSERVATION DIVISION
1220 South St. Francis Dr.
Santa Fe, NM 87505

WELL API NO.	30-025-38684
5. Indicate Type of Lease	STATE <input type="checkbox"/> FEE <input checked="" type="checkbox"/>
6. State Oil & Gas Lease No.	N/A
7. Lease Name or Unit Agreement Name	Gill Deep
8. Well Number	006
9. OGRID Number	00873
10. Pool name or Wildcat	Blinebry O&G, Tubb O&G, Drinkard
11. Elevation (Show whether DR, RKB, RT, GR, etc.)	3469' GR

SUNDRY NOTICES AND REPORTS ON WELLS
(DO NOT USE THIS FORM FOR PROPOSALS TO DRILL OR TO DEEPEN OR PLUG BACK TO A DIFFERENT RESERVOIR. USE "APPLICATION FOR PERMIT" (FORM C-101) FOR SUCH PROPOSALS.)

1. Type of Well: Oil Well ☒ Gas Well ☐ Other ☐

2. Name of Operator
Apache Corporation

3. Address of Operator
6120 S Yale Ave, Suite 1500
Tulsa, OK 74136-4224

4. Well Location
Unit Letter K : 1370 feet from the South line and 1300 feet from the West line
Section 31 Township 21S Range 37E NMPM County Lea

Pit or Below-grade Tank Application ☐ or Closure ☐

Pit type _____ Depth to Groundwater _____ Distance from nearest fresh water well _____ Distance from nearest surface water _____

Pit Liner Thickness: _____ mil Below-Grade Tank: Volume _____ bbls; Construction Material _____

12. Check Appropriate Box to Indicate Nature of Notice, Report or Other Data

NOTICE OF INTENTION TO:

PERFORM REMEDIAL WORK ☐ PLUG AND ABANDON ☐
TEMPORARILY ABANDON ☐ CHANGE PLANS ☐
PULL OR ALTER CASING ☐ MULTIPLE COMPL ☐
OTHER: Request DHC: Blinebry/Tubb/Drinkard ☒

SUBSEQUENT REPORT OF:

REMEDIAL WORK ☐ ALTERING CASING ☐
COMMENCE DRILLING OPNS. ☐ P AND A ☐
CASING/CEMENT JOB ☐
OTHER: ☐

13. Describe proposed or completed operations. (Clearly state all pertinent details, and give pertinent dates, including estimated date of starting any proposed work). SEE RULE 1103. For Multiple Completions: Attach wellbore diagram of proposed completion or recompletion.

Pursuant to Division Order R-11363

Pool Names: Blinebry Oil & Gas (Oil) 6660
Tubb Oil & Gas (Oil) 60240
Drinkard 19190

Perforations:

BLINEBRY 5588-92, 5626-30, 5648-52' 2 JSPF
TUBB 6196-6200, 6211-15, 6250-54, 6272-78' 2 JSPF
DRINKARD 6542-48, 6592-96, 6612-16, 6644-50, 6672-76' 2 JSPF

The allocation method will be as follows: Test 30 BO X 115 MCF X 132 BW

Blinebry	15 BO	50%	78 MCF	68%	94 BW	71%
Tubb	10 BO	33%	14 MCF	12%	8 BW	6%
Drinkard	5 BO	17%	23 MCF	20%	30 BW	23%
TOTAL	30 BO	100%	115 MCF	100%	132 BW	100%

Downhole commingling will not reduce the value of these pools.
Ownership is the same for each of these pools.

DHC Order No:

HOB-0244-A

I hereby certify that the information above is true and complete to the best of my knowledge and belief. I further certify that any pit or below-grade tank has been/will be constructed or closed according to NMOCD guidelines ☐, a general permit ☐ or an (attached) alternative OCD-approved plan ☐.

SIGNATURE

Sophie Mackay

TITLE Engineering Tech

DATE 04/22/2008

or print name Sophie Mackay

E-mail address: sophie.mackay@apachecorp.com Telephone No. (918)491-4864

For State Use Only

APPROVED BY:

Chris Williams

OC DISTRICT SUPERVISOR/GENERAL MANAGER

TITLE

DATE MAY 09 2008

Conditions of Approval (if any):

DISTRICT I
1625 N. FRENCH DR., HOBBS, NM 88240

DISTRICT II
1301 W. GRAND AVENUE, ARTESIA, NM 88210

DISTRICT III
Rio Brazos Rd., Aztec, NM 87410

DISTRICT IV
1220 S. ST. FRANCIS DR., SANTA FE, NM 87505

State of New Mexico
Energy, Minerals and Natural Resources Department

OIL CONSERVATION DIVISION
1220 SOUTH ST. FRANCIS DR.
Santa Fe, New Mexico 87505

Form C-102
Revised October 12, 2005
Submit to Appropriate District Office
State Lease - 4 Copies
Fee Lease - 3 Copies

WELL LOCATION AND ACREAGE DEDICATION PLAT

☐ AMENDED REPORT

API Number	Pool Code	Pool Name
30-025-38684	6660	Blinebry Oil & Gas (Oil)
Property Code	Property Name	Well Number
26469	GILL DEEP	6
OGRID No.	Operator Name	Elevation
873	APACHE CORPORATION	3469'

Surface Location

UL or lot No.	Section	Township	Range	Lot Idn	Feet from the	North/South line	Feet from the	East/West line	County
K	31	21-S	37-E		1370	SOUTH	1300	WEST	LEA

Bottom Hole Location If Different From Surface

UL or lot No.	Section	Township	Range	Lot Idn	Feet from the	North/South line	Feet from the	East/West line	County
Dedicated Acres	Joint or Infill	Consolidation Code	Order No.						
40									

NO ALLOWABLE WILL BE ASSIGNED TO THIS COMPLETION UNTIL ALL INTERESTS HAVE BEEN CONSOLIDATED
OR A NON-STANDARD UNIT HAS BEEN APPROVED BY THE DIVISION

LOT 1	2641.6'
36.96 AC. LOT 2	2639.8'
GEODETIC COORDINATES NAD 27 NME Y=522632.5 N X=847936.6 E LAT.=32.431782° N LONG.=103.205652° W LAT.=32°25'54.41" N LONG.=103°12'20.35" W	
5280.9'	2639.6'
36.77 AC. LOT 3 36.59 AC.	
1300'	
LOT 4 36.40 AC.	
1198.0'	2637.6
1370'	
1286.8'	

OPERATOR CERTIFICATION

I hereby certify that the information herein is true and complete to the best of my knowledge and belief, and that this organization either owns a working interest or unleased mineral interest in the land including the proposed bottom hole location or has a right to drill this well at this location pursuant to a contract with an owner of such mineral or working interest, or to a voluntary pooling agreement or a compulsory pooling order heretofore entered by the division.

A. Mackay 2/25/2008
Signature Date
Sophie Mackay
Printed Name

SURVEYOR CERTIFICATION

I hereby certify that the well location shown on this plat was plotted from field notes of actual surveys made by me or under my supervision, and that the same is true and correct to the best of my belief.

SEPTEMBER 8, 2007
Date Surveyed AR
Signature & Seal of Professional Surveyor 12641
RECEIVED
APR 24 2008
Certificate No. GARY EIDSON 12641
RONALD J. EIDSON 3239

HOBBS OCL

DISTRICT I
1625 N. FRENCH DR., HOBBS, NM 88240

State of New Mexico
Energy, Minerals and Natural Resources Department

DISTRICT II
1301 W. GRAND AVENUE, ARTESIA, NM 88210

OIL CONSERVATION DIVISION
1220 SOUTH ST. FRANCIS DR.
Santa Fe, New Mexico 87505

Form C-102
Revised October 12, 2005
Submit to Appropriate District Office
State Lease - 4 Copies
Fee Lease - 3 Copies

DISTRICT III
Rio Brazos Rd., Aztec, NM 87410

DISTRICT IV
1220 S. ST. FRANCIS DR., SANTA FE, NM 87505

WELL LOCATION AND ACREAGE DEDICATION PLAT

☐ AMENDED REPORT

API Number	Pool Code	Pool Name
30-025-38684	60240	Tubb Oil & Gas (Oil)
Property Code	Property Name	Well Number
26469	GILL DEEP	6
OGRID No.	Operator Name	Elevation
873	APACHE CORPORATION	3469'

Surface Location

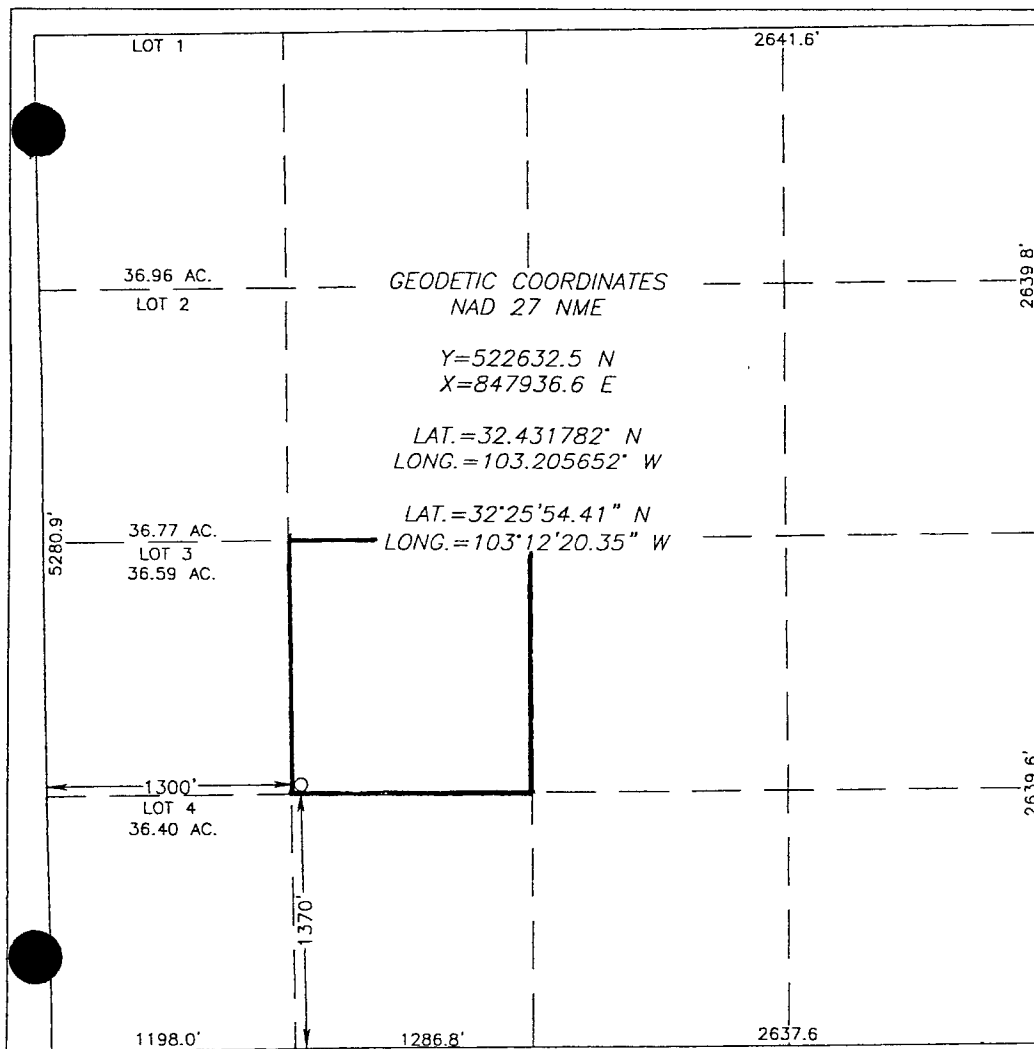
UL or lot No.	Section	Township	Range	Lot Idn	Feet from the	North/South line	Feet from the	East/West line	County
K	31	21-S	37-E		1370	SOUTH	1300	WEST	LEA

Bottom Hole Location If Different From Surface

UL or lot No.	Section	Township	Range	Lot Idn	Feet from the	North/South line	Feet from the	East/West line	County

Dedicated Acres	Joint or Infill	Consolidation Code	Order No.
40			

NO ALLOWABLE WILL BE ASSIGNED TO THIS COMPLETION UNTIL ALL INTERESTS HAVE BEEN CONSOLIDATED
OR A NON-STANDARD UNIT HAS BEEN APPROVED BY THE DIVISION



OPERATOR CERTIFICATION

I hereby certify that the information herein is true and complete to the best of my knowledge and belief, and that this organization either owns a working interest or unleased mineral interest in the land including the proposed bottom hole location or has a right to drill this well at this location pursuant to a contract with an owner of such mineral or working interest, or to a voluntary pooling agreement or a compulsory pooling order heretofore entered by the division.

S. Mackay 2/25/2008
Signature Date

Sophie Mackay
Printed Name

SURVEYOR CERTIFICATION

I hereby certify that the well location shown on this plat was plotted from field notes of actual surveys made by me or under my supervision, and that the same is true and correct to the best of my belief.

SEPTEMBER 6, 2007

Date Surveyed
Signature & Seal of Professional Surveyor
12641

Certificate No. RONALD J. EIDSON 12641
RONALD J. EIDSON 3239

DISTRICT I
1625 N. FRENCH DR., BOBBS, NM 88240

State of New Mexico
Energy, Minerals and Natural Resources Department

DISTRICT II
1301 W. GRAND AVENUE, ARTESIA, NM 88210

OIL CONSERVATION DIVISION
1220 SOUTH ST. FRANCIS DR.
Santa Fe, New Mexico 87505

Form C-102
Revised October 12, 2005
Submit to Appropriate District Office
State Lease - 4 Copies
Fee Lease - 3 Copies

DISTRICT III
Rio Brazos Rd., Aztec, NM 87410

DISTRICT IV
1220 S. ST. FRANCIS DR., SANTA FE, NM 87505

WELL LOCATION AND ACREAGE DEDICATION PLAT

☐ AMENDED REPORT

API Number	Pool Code	Pool Name
30-025-38684	19190	Drinkard
Property Code	Property Name	Well Number
26469	GILL DEEP	6
OGRID No.	Operator Name	Elevation
873	APACHE CORPORATION	3469'

Surface Location

UL or lot No.	Section	Township	Range	Lot Idn	Feet from the	North/South line	Feet from the	East/West line	County
K	31	21-S	37-E		1370	SOUTH	1300	WEST	LEA

Bottom Hole Location If Different From Surface

UL or lot No.	Section	Township	Range	Lot Idn	Feet from the	North/South line	Feet from the	East/West line	County
Dedicated Acres	Joint or Infill	Consolidation Code	Order No.						
40									

NO ALLOWABLE WILL BE ASSIGNED TO THIS COMPLETION UNTIL ALL INTERESTS HAVE BEEN CONSOLIDATED
OR A NON-STANDARD UNIT HAS BEEN APPROVED BY THE DIVISION

LOT 1	2641.6'	
36.96 AC. LOT 2	GEODETIC COORDINATES NAD 27 NME Y=522632.5 N X=847936.6 E LAT.=32.431782° N LONG.=103.205652° W LAT.=32°25'54.41" N LONG.=103°12'20.35" W	2639.6'
36.77 AC. LOT 3 36.59 AC.		
5280.9'	1300'	2639.6'
LOT 4 36.40 AC.	1370'	
1198.0'	1286.8'	2637.6

OPERATOR CERTIFICATION

I hereby certify that the information herein is true and complete to the best of my knowledge and belief, and that this organization either owns a working interest or unleased mineral interest in the land including the proposed bottom hole location or has a right to drill this well at this location pursuant to a contract with an owner of such mineral or working interest, or to a voluntary pooling agreement or a compulsory pooling order heretofore entered by the division.

S. Mackay 2/25/2008
Signature Date
Sophie Mackay
Printed Name

SURVEYOR CERTIFICATION

I hereby certify that the well location shown on this plat was plotted from field notes of actual surveys made by me or under my supervision, and that the same is true and correct to the best of my belief.

SEPTEMBER 6 2007
Date Surveyed AR
Signature & Seal of Professional Surveyor
12641
9/21/07
1090
Certificate No. GARY EIDSON 12641
RONALD J. EIDSON 3239