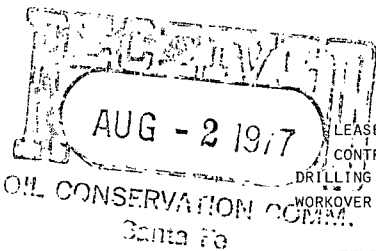


PETROLEUM ENGINEERING  
RESERVOIR STUDIES  
EVALUATIONS  
GEOLOGICAL STUDIES

EWELL N. WALSH, P.E.  
President

**WALSH**  
**ENGINEERING & PRODUCTION**  
**CORPORATION**  
EXECUTIVE BLDG. - 413 W. MAIN  
P. O. BOX 254  
FARMINGTON, NEW MEXICO  
87401



TELEPHONE 325-8203

July 27, 1977

NWU  
JSP  
513  
1060  
104 D II  
Plu Sept

Mr. J. D. Ramey, Secretary-Director  
New Mexico Oil Conservation Commission  
P. O. Box 2088  
Santa Fe, New Mexico 87501

Ref: Non-Standard Proration Unit  
Cotton Petroleum Corp.  
Apache No. 103  
Unit D-Sec. 3-T24N-R4W, N.M.P.M.  
Lindrith Gallup-Dakota, West  
Oil Pool  
Rio Arriba County, New Mexico  
Jicarilla Contract No. 127

Dear Mr. Ramey:

This request for administrative approval of a non-standard proration unit for the above-referred-to well is being presented on behalf of the operator, Cotton Petroleum Corp. This request is being presented in accordance with the procedure set forth in Order R-4314.

The subject well is located 2000' from the North Line, 895' from the West line of Section 3-T24N-R4W, Rio Arriba County, New Mexico. See attached Well Location and Acreage Dedication Plat.

Due to the configuration of Section 3 and the location of the subject well it would be impossible to establish a 160-acre proration unit without having to exclude a portion of the North-east Quarter of the section which is a legal subdivision.

Therefore, it is requested that the 225.3 acres included in the Northwest portion of Section 3-T24N-R4W be approved as a non-Standard Proration Unit for the above-referred-to well.

Copies of this request are being sent to the offset operators of Gallup-Dakota wells, as indicated on attached map, by Certified Mail.

Mr. J. D. Ramey

July 27, 1977

Re: Cotton Petroleum Corp.

Apache No. 103

Thank you for your cooperation and consideration in this matter.

Very truly yours,



Ewell N. Walsh, P. E.  
President

ENW:lt

Enclosure

cc:Cotton Petroleum Corporation w/encl.

USGS, Durango, Colorado w/encl.

NMOCC, Aztec, N.M.

Mr. C. A. Norman, Continental Oil Co., w/encl.

Mr. Ray Nordhausen, Northwest Production w/encl.

Mr. John Ahlm, EPNG, Farmington

NEW MEXICO OIL CONSERVATION COMMISSION  
WELL LOCATION AND ACREAGE DEDICATION PLAT

AUG - 2 1977

Form C-102  
Supersedes C-12  
Effective 1-1-65

All distances must be from the outer boundaries of the Section. CONSERVATION COMM.

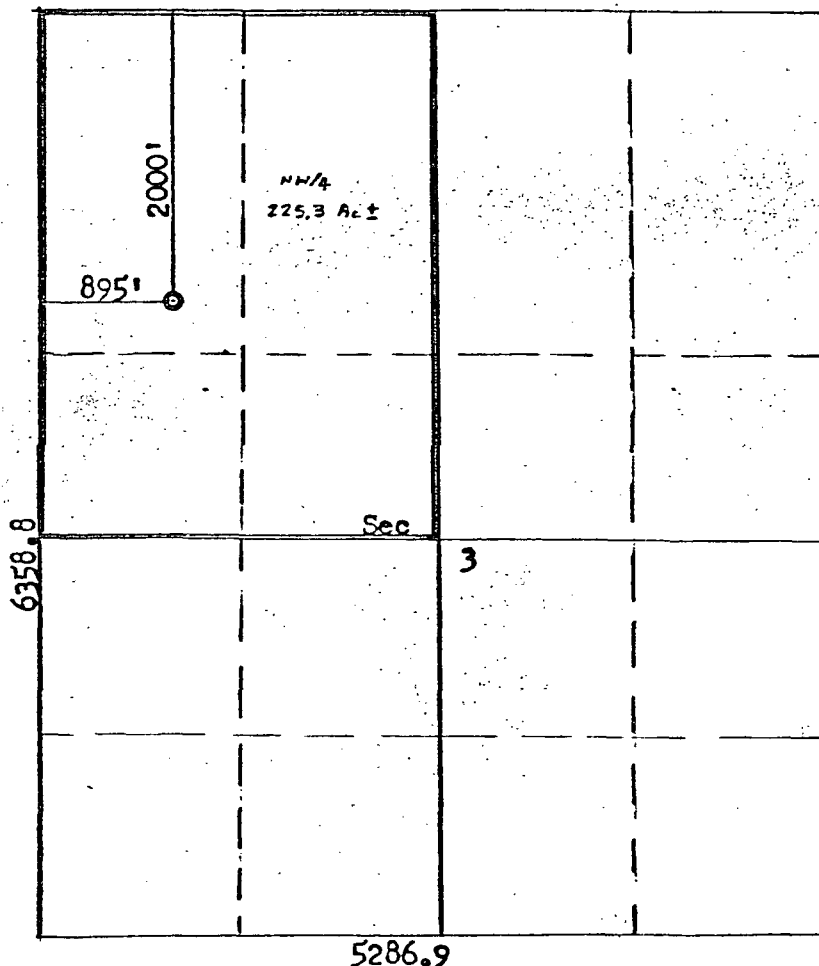
Operator <b>Cotton Petroleum Corporation</b>			Lease <b>Apache</b>		Well No. <b>103</b>
Unit Letter <b>D</b>	Section <b>3</b>	Township <b>24N</b>	Range <b>4W</b>	County <b>Rio Arriba</b>	
Actual Footage Location of Wells <b>2000</b> feet from the <b>North</b> line and <b>895</b> feet from the <b>West</b> line					
Ground Level Elev. <b>6877</b>	Producing Formation <b>Dakota</b>		Pool <b>Lindrith-Gallup-Dakota, West</b>		Dedicated Acreage <b>225.3±</b> Acres

1. Outline the acreage dedicated to the subject well by colored pencil or hatchure marks on the plat below.
2. If more than one lease is dedicated to the well, outline each and identify the ownership thereof (both as to working interest and royalty).
3. If more than one lease of different ownership is dedicated to the well, have the interests of all owners been consolidated by communitization, unitization, force-pooling, etc?

☐ Yes ☐ No If answer is "yes," type of consolidation \_\_\_\_\_

If answer is "no," list the owners and tract descriptions which have actually been consolidated. (Use reverse side of this form if necessary.) \_\_\_\_\_

No allowable will be assigned to the well until all interests have been consolidated (by communitization, unitization, forced-pooling, or otherwise) or until a non-standard unit, eliminating such interests, has been approved by the Commission.



Scale: 4 Inches = 1 Mile

CERTIFICATION

I hereby certify that the information contained herein is true and complete to the best of my knowledge and belief.  
For: Cotton Petr. Corp.

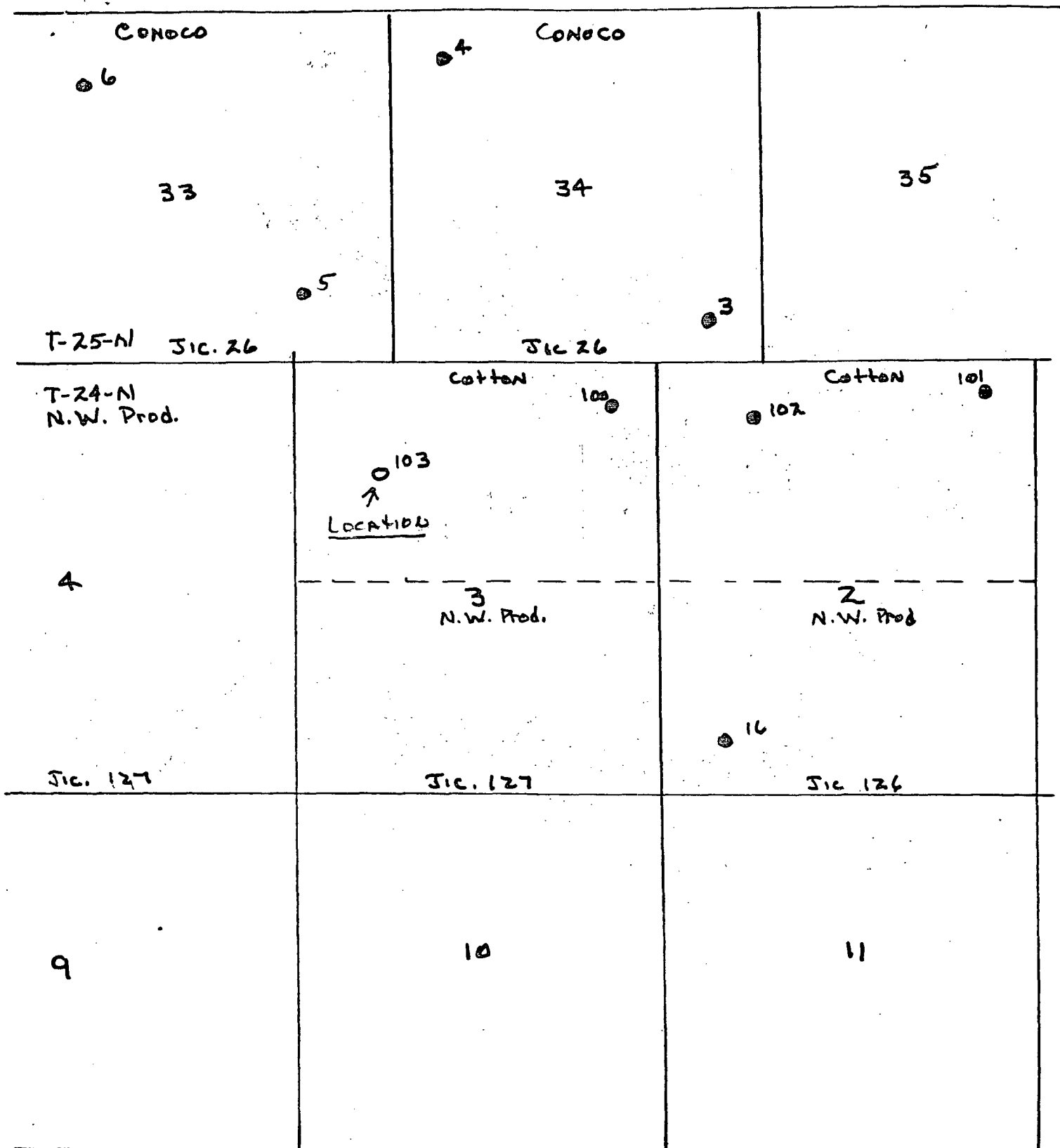
Name \_\_\_\_\_  
Position **Ewell N. Walsh,**  
**President, Walsh**  
Company **Engineering &**  
**Production Corporation**

Date **June 23, 1977**

I hereby certify that the well location shown on this plat was plotted from field notes of actual surveys made by me or under my supervision, and that the same is true and correct to the best of my knowledge and belief.

Date Surveyed **June 13, 1977**  
Registered Professional Engineer and Land Surveyor  
**Fred H. Kerr Jr.**  
Certificate No. **3950**

R-4-W



COTTON PETROLEUM CORP.

APACHE NO. 103

2000' FNL, 895' FWL, Sec. 3-T24N-R4W  
Rio Arriba County, N. M.