

DATE IN 9.24.10	SUSPENSE	ENGINEER RE	LOGGED IN 9.24.10	TYPE PC	PTB W	APP NO. 1026737054
-----------------	----------	-------------	-------------------	---------	-------	--------------------

ABOVE THIS LINE FOR DIVISION USE ONLY

NEW MEXICO OIL CONSERVATION DIVISION

- Engineering Bureau -

1220 South St. Francis Drive, Santa Fe, NM 87505



REC'D OGD

Devon 6137

NORTHEAST BLANCO UNIT #68M

2010 SEP 22

AV. EBL #68M

ADMINISTRATIVE APPLICATION CHECKLIST

30-045-33474

THIS CHECKLIST IS MANDATORY FOR ALL ADMINISTRATIVE APPLICATIONS FOR EXCEPTIONS TO DIVISION RULES AND REGULATIONS WHICH REQUIRE PROCESSING AT THE DIVISION LEVEL IN SANTA FE

Application Acronyms:

[NSL-Non-Standard Location] [NSP-Non-Standard Proration Unit] [SD-Simultaneous Dedication]
 [DHC-Downhole Commingling] [CTB-Lease Commingling] [PLC-Pool/Lease Commingling]
 [PC-Pool Commingling] [OLS - Off-Lease Storage] [OLM-Off-Lease Measurement]
 [WFX-Waterflood Expansion] [PMX-Pressure Maintenance Expansion]
 [SWD-Salt Water Disposal] [IPI-Injection Pressure Increase]
 [EOR-Qualified Enhanced Oil Recovery Certification] [PPR-Positive Production Response]

Fed
San J.

[1] TYPE OF APPLICATION - Check Those Which Apply for [A]

[A] Location - Spacing Unit - Simultaneous Dedication
☐ NSL ☐ NSP ☐ SD

Check One Only for [B] or [C]

[B] Commingling - Storage - Measurement
☐ DHC ☐ CTB ☐ PLC ☒ PC ☐ OLS ☐ OLM

[C] Injection - Disposal - Pressure Increase - Enhanced Oil Recovery
☐ WFX ☐ PMX ☐ SWD ☐ IPI ☐ EOR ☐ PPR

[D] Other: Specify _____

[2] NOTIFICATION REQUIRED TO: - Check Those Which Apply, or ☐ Does Not Apply

[A] ☒ Working, Royalty or Overriding Royalty Interest Owners

[B] ☐ Offset Operators, Leaseholders or Surface Owner

[C] ☐ Application is One Which Requires Published Legal Notice

[D] ☐ Notification and/or Concurrent Approval by BLM or SLO
 U.S. Bureau of Land Management - Commissioner of Public Lands, State Land Office

[E] ☐ For all of the above, Proof of Notification or Publication is Attached, and/or,

[F] ☐ Waivers are Attached

[3] SUBMIT ACCURATE AND COMPLETE INFORMATION REQUIRED TO PROCESS THE TYPE OF APPLICATION INDICATED ABOVE.

[4] CERTIFICATION: I hereby certify that the information submitted with this application for administrative approval is **accurate** and **complete** to the best of my knowledge. I also understand that **no action** will be taken on this application until the required information and notifications are submitted to the Division.

Note: Statement must be completed by an individual with managerial and/or supervisory capacity.

Mike Pippin
 Print or Type Name

Mike Pippin
 Signature

Petroleum Engineer
 Title
 mike@pippinllc.com
 e-mail Address

September 20, 2010
 Date

PC - 1228

DEVON ENERGY PRODUCTION COMPANY, L.P.
Mike Pippin
3104 N. Sullivan Avenue
Farmington, NM 87401
505-327-4573 (phone) mike@pippinllc.com

September 20, 2010

NMOCD
c/o Will Jones
1220 South St. Francis Drive
Santa Fe, NM 87505

RE: Application for Surface Commingling
Northeast Blanco Unit #68M – API#: 30-045-33474
Unit Letter "A" Section 35 T31N R07W
San Juan County, New Mexico

Dear Mr. Jones:

Devon Energy Production Company, L.P. would like to surface commingle the existing Basin Dakota (71599) interval with the existing South Los Pinos Fruitland Sand Pictured Cliffs (80690) interval in the referenced well. Both the Dakota and Pictured Cliffs sides of this gas well were completed on 5/25/06 and were 1st delivered in June 2006. The initial rates of this dual completed well were about 140 MCF/D for the Dakota and about 280 MCF/D for the Pictured Cliffs. Their current rates are down to about 65 MCF/D and 150 MCF/D, respectively. Attached is the C-103 along with the necessary supporting data.

The allocation of production will be calculated as follows. The two zones have been producing separately for over 4 years. The attached unit type curve constructed for each zone will then be fitted to the 4 year production test data for each zone. The resulting curve will be used to forecast future monthly production rates for the life of each zone. The zones will then be commingled at the surface. Monthly production will then be allocated to each zone based on the ratio of the forecast production rates for each zone for that month.

For example, if in any given future month, the DK was forecast from its type curve to make 750 MCF/D, and the PC was forecast from its type curve to make 250 MCF/D, then the actual commingled production for that month would be allocated 75% to the DK and 25% to the PC. Allocations will change monthly (although the month-to-month changes will be relatively small).

This allocation method is required because production from the two zones decline differently as evidenced by their type curves. A constant percentage allocation would not be adequate because ownership differs in the two zones.

Please contact me at 505-327-4573 should you have any questions.

Very truly yours,



Mike Pippin PE
Petroleum Engineer

Enclosures

Submit 3 Copies To Appropriate District Office
District I
1625 N. French Dr., Hobbs, NM 88240
District II
1301 W. Grand Ave., Artesia, NM 88210
District III
1000 Rio Brazos Rd., Aztec, NM 87410
District IV
1220 S. St. Francis Dr., Santa Fe, NM 87505

State of New Mexico
Energy, Minerals and Natural Resources

Form C-103
June 19, 2008

OIL CONSERVATION DIVISION
1220 South St. Francis Dr.
Santa Fe, NM 87505

WELL API NO. 30-045-33474
5. Indicate Type of Lease STATE <input type="checkbox"/> FEE <input type="checkbox"/>
6. State Oil & Gas Lease No. FEDERAL LEASE: SF 079003
7. Lease Name or Unit Agreement Name Northeast Blanco Unit
8. Well Number #68M
9. OGRID Number 06137
10. Pool name or Wildcat: Basin Dakota (71599) So. Los Pinos FS PC (80690)
11. Elevation (Show whether DR, RKB, RT, GR, etc.) 6333' GL

SUNDRY NOTICES AND REPORTS ON WELLS
(DO NOT USE THIS FORM FOR PROPOSALS TO DRILL OR TO DEEPEN OR PLUG BACK TO A DIFFERENT RESERVOIR. USE "APPLICATION FOR PERMIT" (FORM C-101) FOR SUCH PROPOSALS.)

1. Type of Well: Oil Well ☐ Gas Well ☒ Other

2. Name of Operator

Devon Energy Production Company, L.P.

3. Address of Operator

PO Box 6459, Navajo Dam, NM 87419

4. Well Location

Unit Letter A : 500 feet from the NORTH line and 1205 feet from the EAST line
Section 35 Township 31-N Range 7-W NMPM San Juan County

12. Check Appropriate Box to Indicate Nature of Notice, Report or Other Data

NOTICE OF INTENTION TO:

PERFORM REMEDIAL WORK ☐ PLUG AND ABANDON ☐
TEMPORARILY ABANDON ☐ CHANGE PLANS ☐
PULL OR ALTER CASING ☐ MULTIPLE COMPL ☐
DOWNHOLE COMMINGLE ☐

SUBSEQUENT REPORT OF:

REMEDIAL WORK ☐ ALTERING CASING ☐
COMMENCE DRILLING OPNS. ☐ P AND A ☐
CASING/CEMENT JOB ☐

OTHER: Surface Commingle Application ☒

OTHER: ☐

13. Describe proposed or completed operations. (Clearly state all pertinent details, and give pertinent dates, including estimated date of starting any proposed work). SEE RULE 1103. For Multiple Completions: Attach wellbore diagram of proposed completion or recompletion.

Devon Energy requests administrative approval to surface commingle the Basin Dakota (71599) and the South Los Pinos Fruitland Sand Pictured Cliffs (80690) in this dually completed gas well.

Surface commingling will eliminate redundant surface equipment & maximize productivity while not hindering the recovery of liquids & gas. Notice has been filed concurrently on form 3160-5 with the BLM. Since the two intervals do not have common ownership, Devon will utilize the test period described in the attached method of allocation. All the interest owners of both intervals have been notified.

The Dakota interval is currently flowing about 65 MCF/D from perfs at MD7844'-7942' with a bottom hole pressure of about 874 psi. The Pictured Cliffs is currently flowing about 150 MCF/D from perfs at MD3373'-3430' with a bottom hole pressure of about 1283 psi.

I hereby certify that the information above is true and complete to the best of my knowledge and belief.

SIGNATURE Mike Pippin TITLE Petroleum Engineer - Agent DATE 9/20/10

Type or print name Mike Pippin E-mail address: mike@pippinllc.com PHONE: 505-327-4573
For State Use Only

APPROVED BY: _____ TITLE _____ DATE _____

Conditions of Approval (if any):

NORTHEAST BLANCO UNIT #68M

Current – 9/20/10

Dakota / Pictured Cliffs / API#: 30-045-33474

Surface: (A), Section 35, T-31-N, R-7-W, San Juan County, NM

Bottom Hole: (B), Section 35, T-31-N, R-7-W, San Juan County, NM

Spud: 4/27/064

Comp: : 5/25/06

Elevation: 6333' GL

Ojo Alamo @ MD2286'

Kirtland @ MD2398'

Pictured Cliffs @ MD3246'

Lewis @ MD3478'

Cliffhouse @ MD5290'

Menefee @ MD5330'

Point Lookout @ MD5628'

Mancos @ MD5942'

Gallup @ MD6953'

Dakota @ MD7825'

PBTD @ MD7957'

6-1/4" Hole to TD

TD MD7965'

9-5/8" 32.3# H-40 @ 292'
37 bbls cmt
(Circ. 15 bbls cmt to Surf.)

TOC Behind 4-1/2" @ 2582' Calc. @ 75%

PC Perfs @ MD3373'-3430' fraced
w/206,263# 20/40 sand in X-linked gel

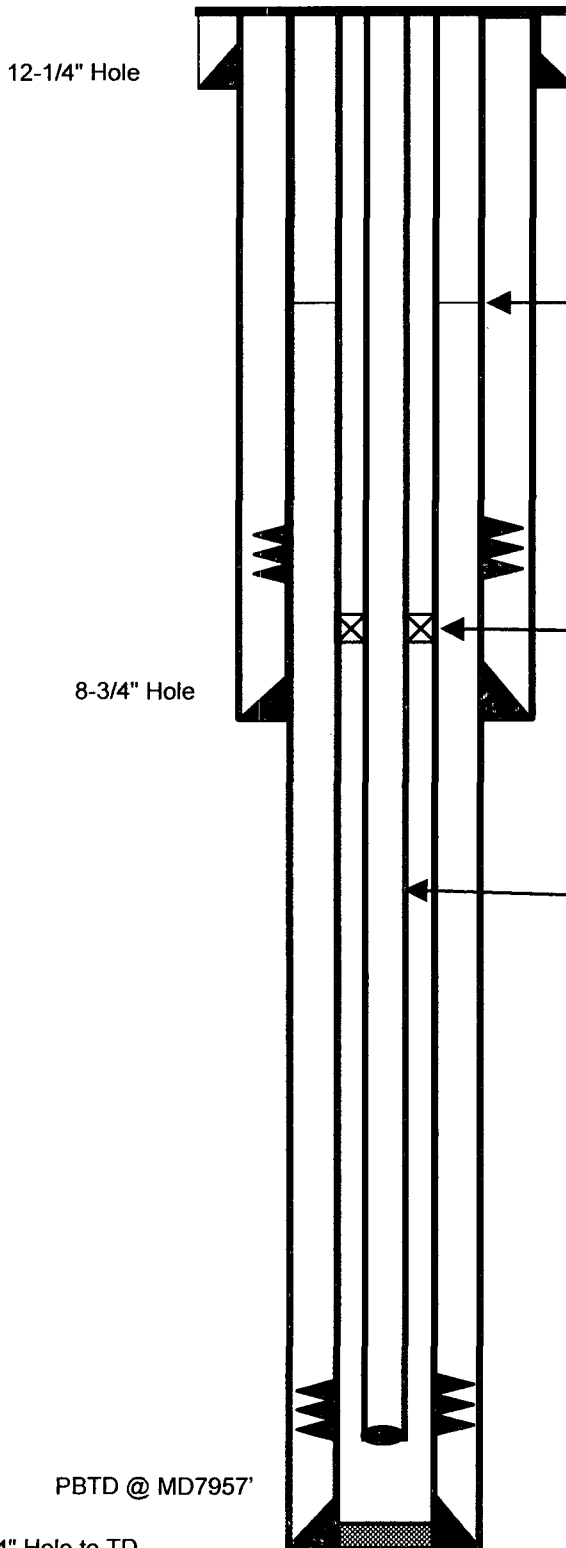
PKR on 2-3/8" tbg @ MD3463'

7" 23# J-55 @ MD3568'
Cmted with 161 bbls cmt
Circ. 25 bbls cmt to surface

2-3/8" 4.7# tbg @ MD7890'

Dakota Perfs @ MD7844'-7942'.
Fraced w/55,685# ottawa sand in X-
linked gel

4-1/2" 11.6# J-55 @ MD7965'
Cmted with 127 bbls cmt
Did not circ. cmt



District I

1625 N. French Dr., Hobbs, NM 88240

District II

1301 W. Grand Avenue, Artesia, NM 88210

District III

1000 Rio Brazos Rd., Aztec, NM 87410

District IV

1220 S. St. Francis Dr., Santa Fe, NM 87505

State of New Mexico
Energy, Minerals & Natural Resources Department

OIL CONSERVATION DIVISION

1220 South St. Francis Dr.

Santa Fe, NM 87505

AS DRILLED

Form C-102

Revised October 12, 2005

Submit to Appropriate District Office

State Lease - 4 Copies

Fee Lease - 3 Copies

☐ AMENDED REPORT**WELL LOCATION AND ACREAGE DEDICATION PLAT**

¹ API Number 30-045-33474	² Pool Code 80690	³ Pool Name South Los Pinos Fruitland Pictured Cliffs
⁴ Property Code 19641	⁵ Property Name Northeast Blanco Unit	⁶ Well Number 68M
⁷ OGRID No. 6137	⁸ Operator Name Devon Energy Production Company, L.P.	⁹ Elevation 6333' GL

¹⁰ Surface Location

UL or lot no.	Section	Township	Range	Lot Idn	Feet from the	North/South line	Feet from the	East/West line	County
A	35	31-N	7-W		500'	NORTH	1205'	EAST	San Juan

¹¹ Bottom Hole Location If Different From Surface

UL or lot no.	Section	Township	Range	Lot Idn	Feet from the	North/South line	Feet from the	East/West line	County
B	35	31-N	7-W		951'	NORTH	1811'	EAST	San Juan

¹² Dedicated Acres 160-NE/4	¹³ Joint or Infill	¹⁴ Consolidation Code	¹⁵ Order No
---	-------------------------------	----------------------------------	------------------------

No allowable will be assigned to this completion until all interests have been consolidated or a non-standard unit has been approved by the division.

	¹⁷ OPERATOR CERTIFICATION I hereby certify that the information contained herein is true and complete to the best of my knowledge and belief, and that this organization either owns a working interest or unleased mineral interest in the land including the proposed bottom hole location or has a right to drill this well at this location pursuant to a contract with an owner of such a mineral or working interest, or to a voluntary pooling agreement or a compulsory pooling order heretofore entered by the division. Signature: <u>Mike Pippin</u> Date: <u>9/20/10</u> Printed Name: <u>Mike Pippin</u>
	¹⁸ SURVEYOR CERTIFICATION I hereby certify that the well location shown on this plat was plotted from field notes of actual surveys made by me or under my supervision, and that the same is true and correct to the best of my belief. Date of Survey: <u>9/29/05</u> Signature and Seal of Professional Surveyor: <u>Gary D. Vann</u> Certificate Number: <u>7016</u>

District I

1625 N. French Dr., Hobbs, NM 88240

District II

1301 W. Grand Avenue, Artesia, NM 88210

District III

1000 Rio Brazos Rd., Aztec, NM 87410

District IV

1220 S. St. Francis Dr., Santa Fe, NM 87505

State of New Mexico

Energy, Minerals & Natural Resources Department

OIL CONSERVATION DIVISION

1220 South St. Francis Dr.

Santa Fe, NM 87505

AS DRILLED

Form C-102

Revised October 12, 2005

Submit to Appropriate District Office

State Lease - 4 Copies

Fee Lease - 3 Copies

☐ AMENDED REPORT

WELL LOCATION AND ACREAGE DEDICATION PLAT

¹ API Number 30-045-33474	² Pool Code 71599	³ Pool Name Basin Dakota
⁴ Property Code 19641	⁵ Property Name Northeast Blanco Unit	
⁷ OGRID No. 6137	⁸ Operator Name Devon Energy Production Company, L.P.	⁶ Well Number 68M
		⁹ Elevation 6333' GL

¹⁰ Surface Location

UL or lot no.	Section	Township	Range	Lot Idn	Feet from the	North/South line	Feet from the	East/West line	County
A	35	31-N	7-W		500'	NORTH	1205'	EAST	San Juan

¹¹ Bottom Hole Location If Different From Surface

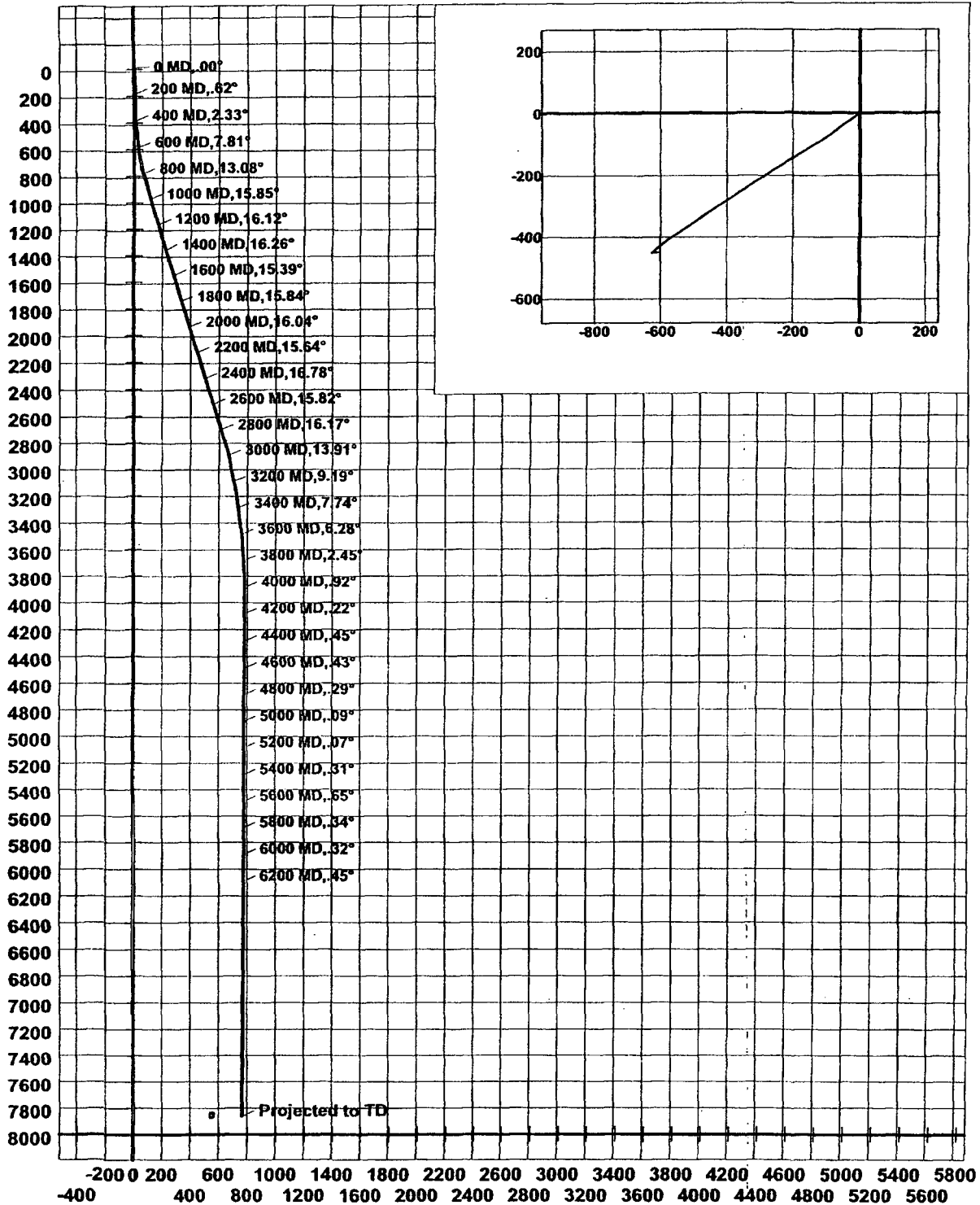
UL or lot no.	Section	Township	Range	Lot Idn	Feet from the	North/South line	Feet from the	East/West line	County
B	35	31-N	7-W		951'	NORTH	1811'	EAST	San Juan

¹² Dedicated Acres 320-E/2	¹³ Joint or Infill	¹⁴ Consolidation Code	¹⁵ Order No
--	-------------------------------	----------------------------------	------------------------

No allowable will be assigned to this completion until all interests have been consolidated or a non-standard unit has been approved by the division.

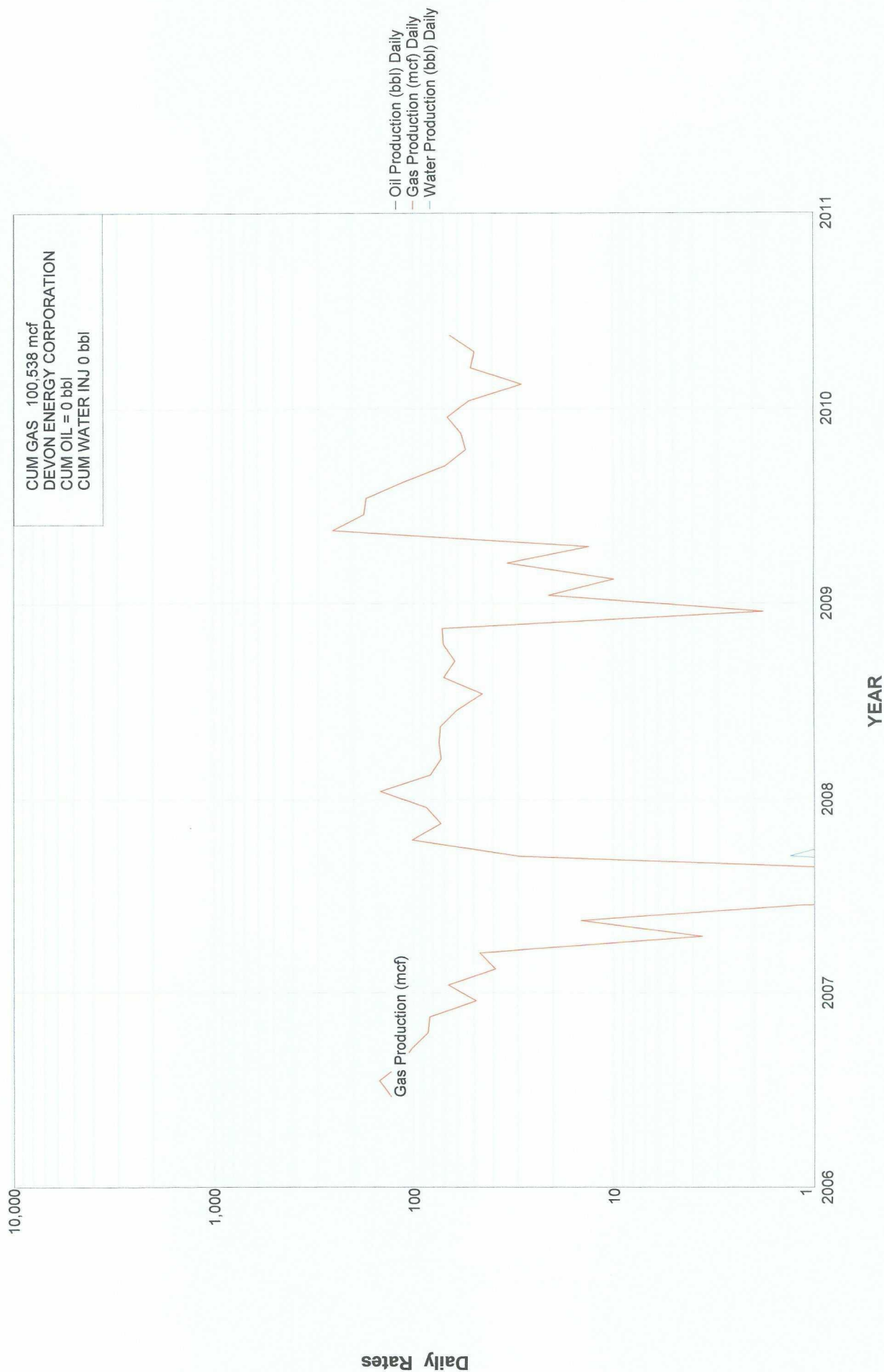
	¹⁷ OPERATOR CERTIFICATION I hereby certify that the information contained herein is true and complete to the best of my knowledge and belief, and that this organization either owns a working interest or unleased mineral interest in the land including the proposed bottom hole location or has a right to drill this well at this location pursuant to a contract with an owner of such a mineral or working interest, or to a voluntary pooling agreement or a compulsory pooling order heretofore entered by the division. Signature <u>Mike Pippin</u> Date <u>9/20/10</u> Printed Name <u>Mike Pippin</u>
	¹⁸ SURVEYOR CERTIFICATION I hereby certify that the well location shown on this plat was plotted from field notes of actual surveys made by me or under my supervision, and that the same is true and correct to the best of my belief. Date of Survey <u>9/29/05</u> Signature and Seal of Professional Surveyor: <u>Gary D. Vann</u> Certificate Number <u>7016</u>

Company: Devon Energy
 Lease/Well: NEBU 68 M
 Location: PPP #4, San Juan County
 State/Country: NM



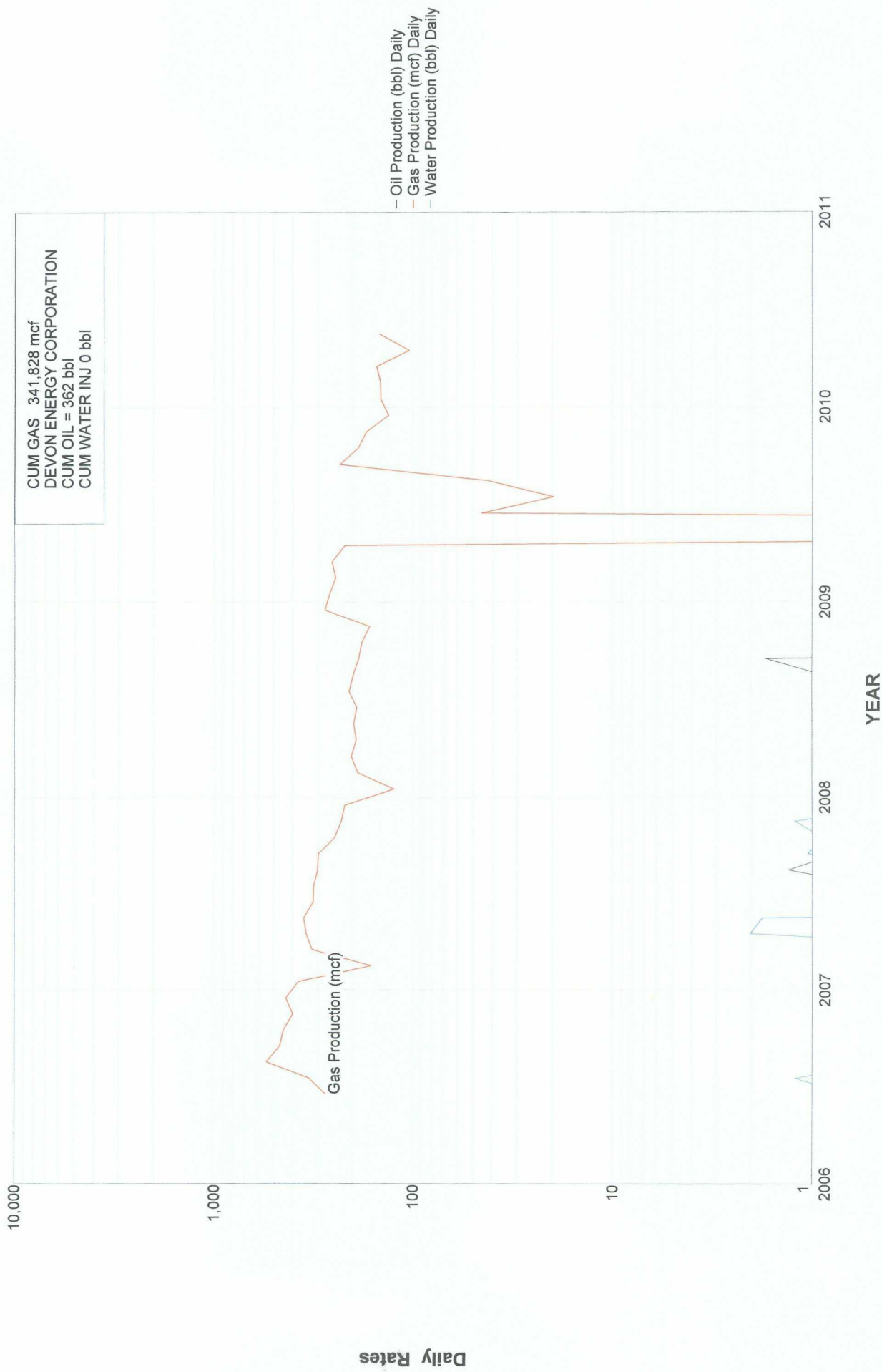
Lease Name: NORTHEAST BLANCO UNIT
County, State: SAN JUAN, NM
Operator: DEVON ENERGY CORPORATION
Field: BASIN
Reservoir: DAKOTA
Location: 35 31N 7W NW NE NE

NORTHEAST BLANCO UNIT - 68M 35 31N 7W NW NE NE DAKOTA 06/2006 30045334740000



Lease Name: NORTHEAST BLANCO UNIT
County, State: SAN JUAN, NM
Operator: DEVON ENERGY CORPORATION
Field: LOS PINOS SOUTH
Reservoir: FRUITLAND PICTURED C
Location: 35 31N 7W NW NE NE

NORTHEAST BLANCO UNIT - 68M 35 31N 7W NW NE NE FRUITLAND PICTURED C 06/2006 30045334740000



Devon Energy Production Company, L.P.
Mike Pippin
3104 N. Sullivan Avenue
Farmington, NM 87401
505-327-4573 (phone) mike@pippinllc.com

September 20, 2010

RE: Permit to Surface Commingle
Northeast Blanco Unit #68M – API#: 30-045-33474
Unit Letter "A" Section 35 T31N R07W
San Juan County, New Mexico

VIA CERTIFIED MAIL

To all Working Interest Owners:

In accordance with the New Mexico Oil Conservation Division Rule 303.C governing down hole commingling, you are hereby notified that Devon Energy Production Company, L.P., as operator of the above-captioned well, intends to surface commingle production from the South Los Pinos Fruitland Sand Pictured Cliffs and Basin Dakota gas pools.

The Pictured Cliffs and Dakota are currently completed dual and being tested simultaneously to establish a production potential. The production from the Pictured Cliffs and the Dakota will be allocated on a production trend based formula. A "Method of Allocation" explanation has been enclosed with this notice.

Please contact me at 505-327-4573 should you have any questions.

Very truly yours,
DEVON ENERGY PRODUCTION COMPANY, L.P.



Mike Pippin
Petroleum Engineer

Enclosures

NORTHEAST BLANCO UNIT
PC WORKING INTEREST OWNERS

BP America Production Company
ATTN: John Larson
501 Westlake Park Blvd.
(Room 19.108 WL1)
Houston TX, 77079

Conoco Phillips Company
ATTN: Ben Malone
P.O. Box 4289
Farmington, NM 87499-4289

Note: Devon Energy, B&N Co., and BN Non-Coal
Requires no notification; therefore not listed above

**NORTHEAST BLANCO UNIT
WORKING INTEREST OWNERS
DAKOTA**

**BP America Production Company
ATTN: John Larson
501 Westlake Park Blvd.
WL1 19.108
Houston, TX 77079**

**Canaan Resources, LLC
One Leadership Square
211 N. Robinson Avenue, Suite N1000
Oklahoma City, OK 73102**

**ConocoPhillips Company
ATTN: Ben Malone
3401 E. 30th Street
Farmington, NM 87402-8807**

**Frank C. Davis III
3219 Bryn Mawr
Dallas, TX 75225**

**Diverse Energy Investments
Two Galeria Tower
13455 Noel Rd, Suite 2000
Dallas, TX 75240**

**Charles W. Gay
c/o James M. Raymond, AIF
P. O. Box 291445
Kerrville, TX 78029-1445**

**Lorrayn Gay Hacker
c/o James M. Raymond, AIF
P. O. Box 291445
Kerrville, TX 78029-1445**

**Tamacam, LLC
c/o James M. Raymond, AIF
P. O. Box 291445
Kerrville, TX 78029-1445**

**T. H. McElvain Oil & Gas Ltd. Partnership
McElvain Oil & Gas Properties, Inc., GP
1050 17th Street, Suite 1800
Denver, CO 80265**

**J & M Raymond, Ltd.
Raymond & Sons I, LLC, GP
P. O. Box 291445
Kerrville, TX 78029-1445**

Method of Allocation

Devon Energy recommends the following procedure to allocate surface commingled production between the Basin-Dakota and the Fruitland Pictured Cliffs pools within the Northeast Blanco Unit:

- The Basin-Dakota and Fruitland Pictured Cliffs formations will be completed simultaneously.
- A single 2-3/8" tubing string will be run in the well, with a packer isolating the two horizons.
- The Dakota completion will be produced up the tubing string.
- The Fruitland Pictured Cliffs completion will be produced up the 2-3/8" x 4-1/2" annulus.
- Production from each zone will be measured separately using a 3 phase metering device prior to flowing through a mutual production separator. Total well stream gas will be measured using a conventional orifice plate meter tube located downstream of the production separator.
- The completions will be flow tested separately for approximately 90 days to establish a stabilized rate and trend.
- Following the testing period the two pools will be surface commingled. Total well production will flow through common surface facilities and total produced gas will be measured.
- Production will be allocated between the Dakota and Fruitland Pictured Cliffs intervals by applying the variable percentage schedule to the daily total well production.

The Variable Percentage Schedule was derived using Basin-Dakota and Pictured Cliffs production type curves. These type curves were generated by normalizing production data from surrounding wells. The variable percentage schedule is required due to the dissimilar decline trends exhibited by the Pictured Cliffs and Dakota. Figure 1 depicts a typical Pictured Cliffs – Dakota production allocation. The actual percentages will vary from well to well, depending on well productivity.

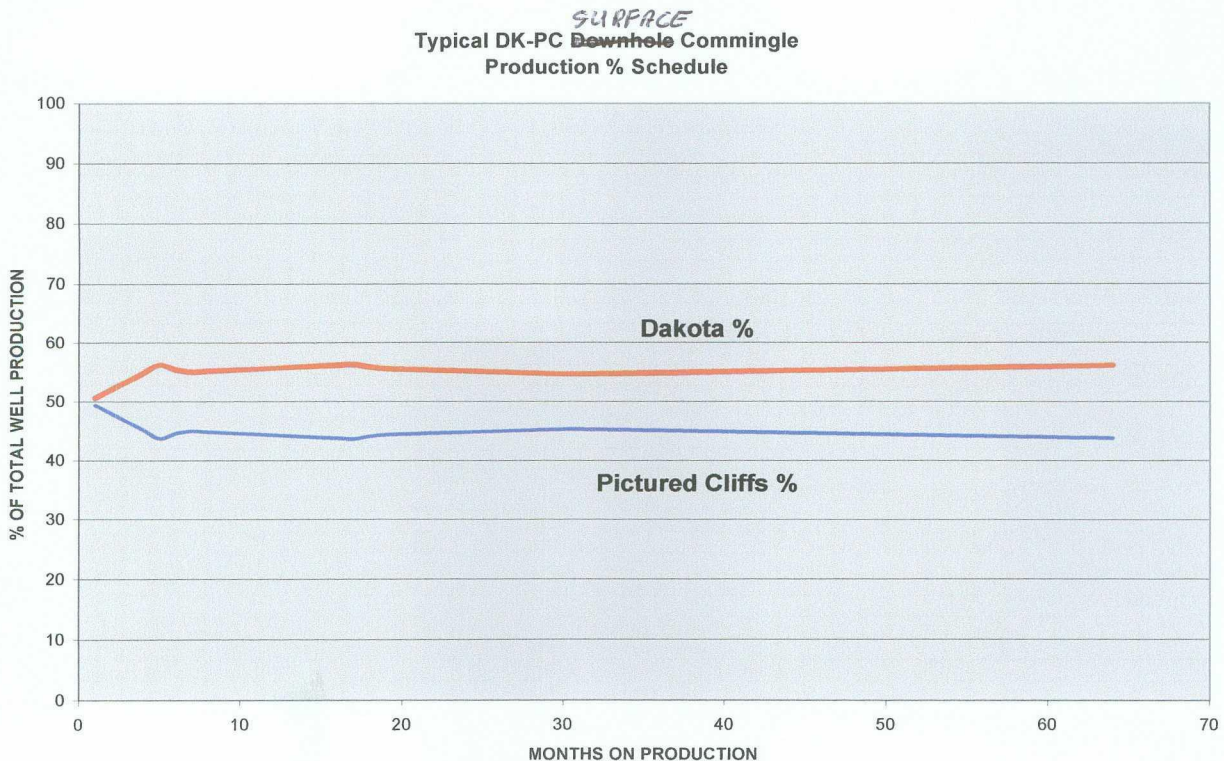


Figure 1

The Basin-Dakota type curve was generated from normalized production of 40 offsetting Basin-Dakota producers. The Basin-Dakota type curve clearly defines the decline rate for the life of a well. Comparison of this type curve with the production schedule obtained by using flow test data demonstrates the reliability of this method for projecting production. (See Figure 2) The curve covers a thirty two month period with a variance in cumulative normalized production of less than 0.1%.

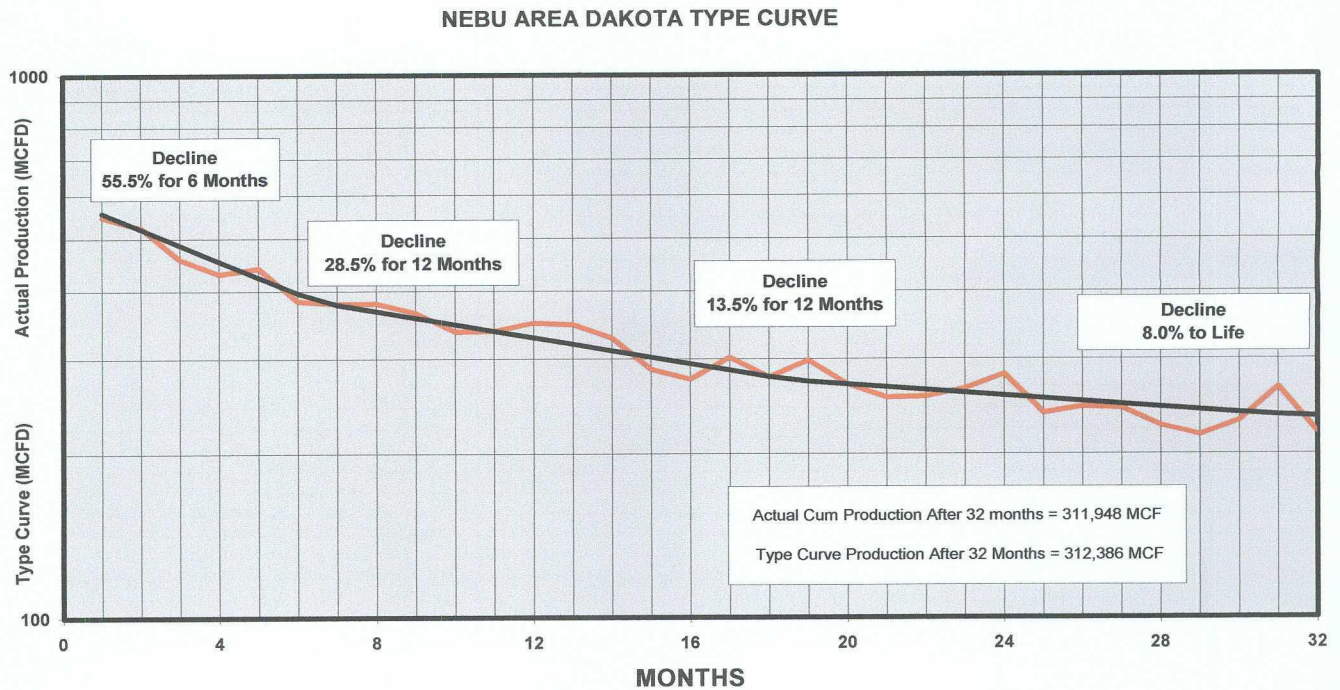


Figure 2

The Fruitland Pictured Cliffs type curve was generated from normalized production of 15 offsetting Fruitland Pictured Cliffs producers. The Fruitland Pictured Cliffs type curve clearly defines the decline rate for the life of a well. Comparison of this type curve with the production schedule obtained by using flow test data demonstrates the reliability of this method for projecting production. (See Figure 2) The curve covers a five year period with a variance in cumulative normalized production of only 0.8%.

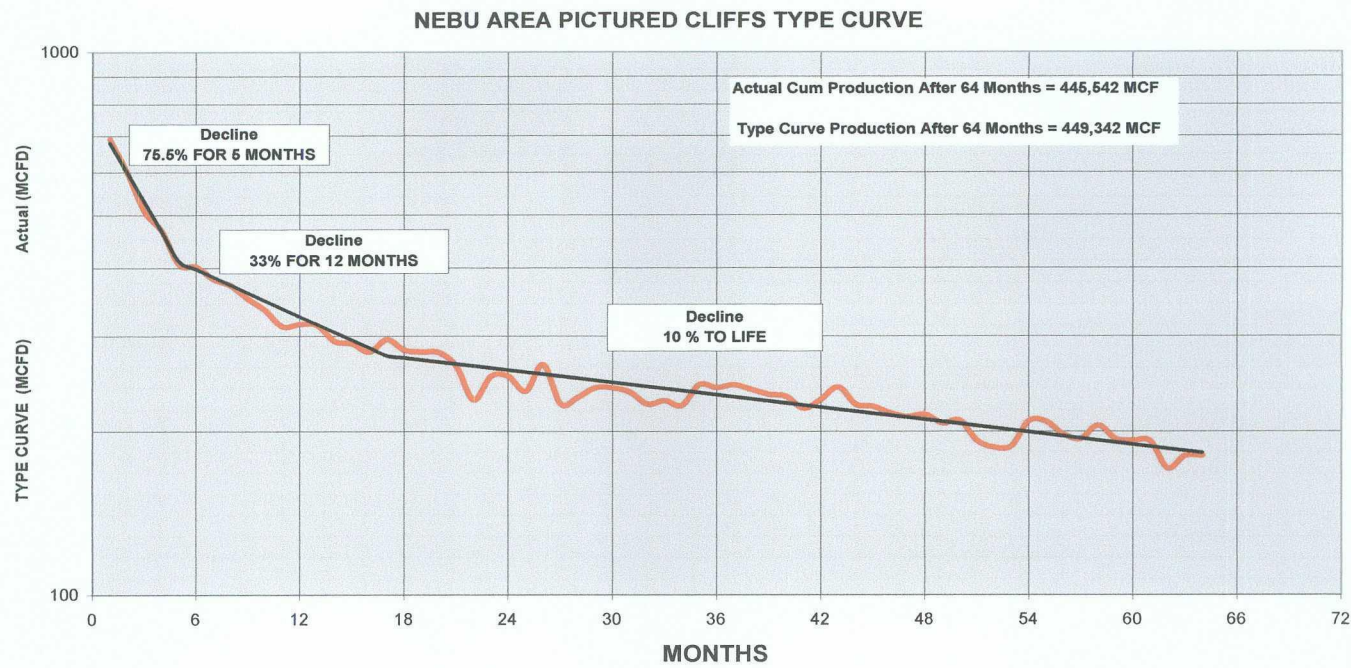
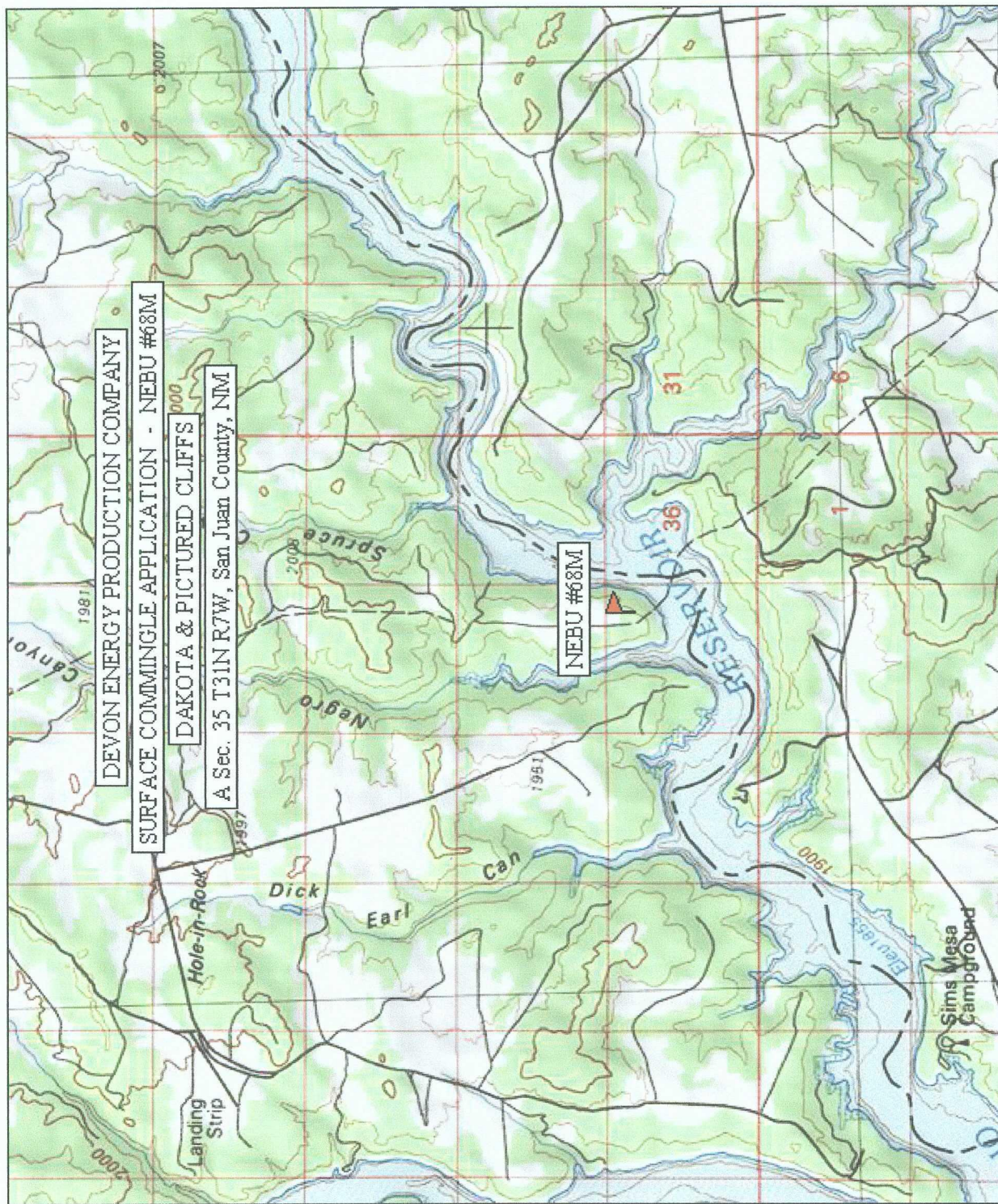


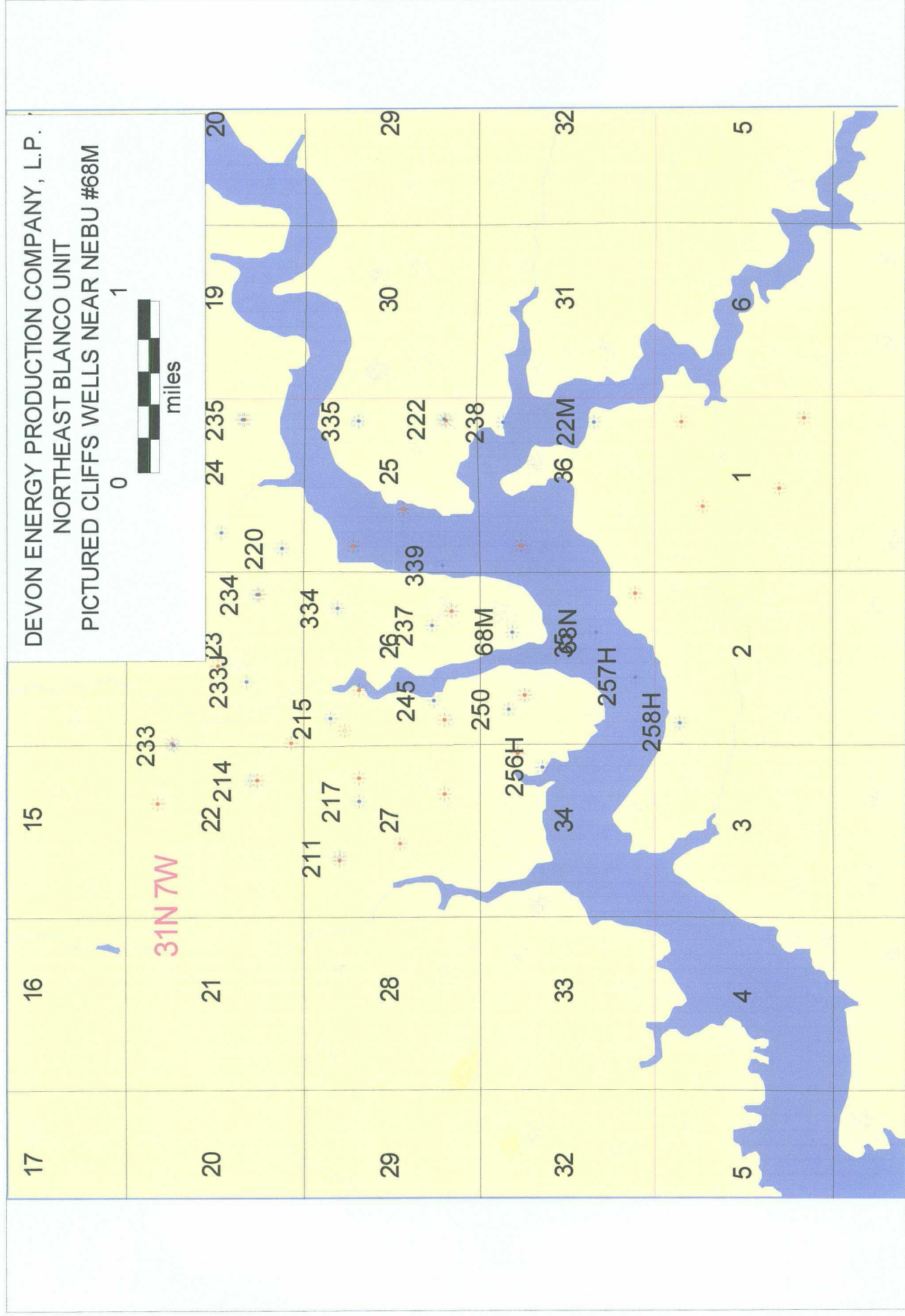
Figure 3

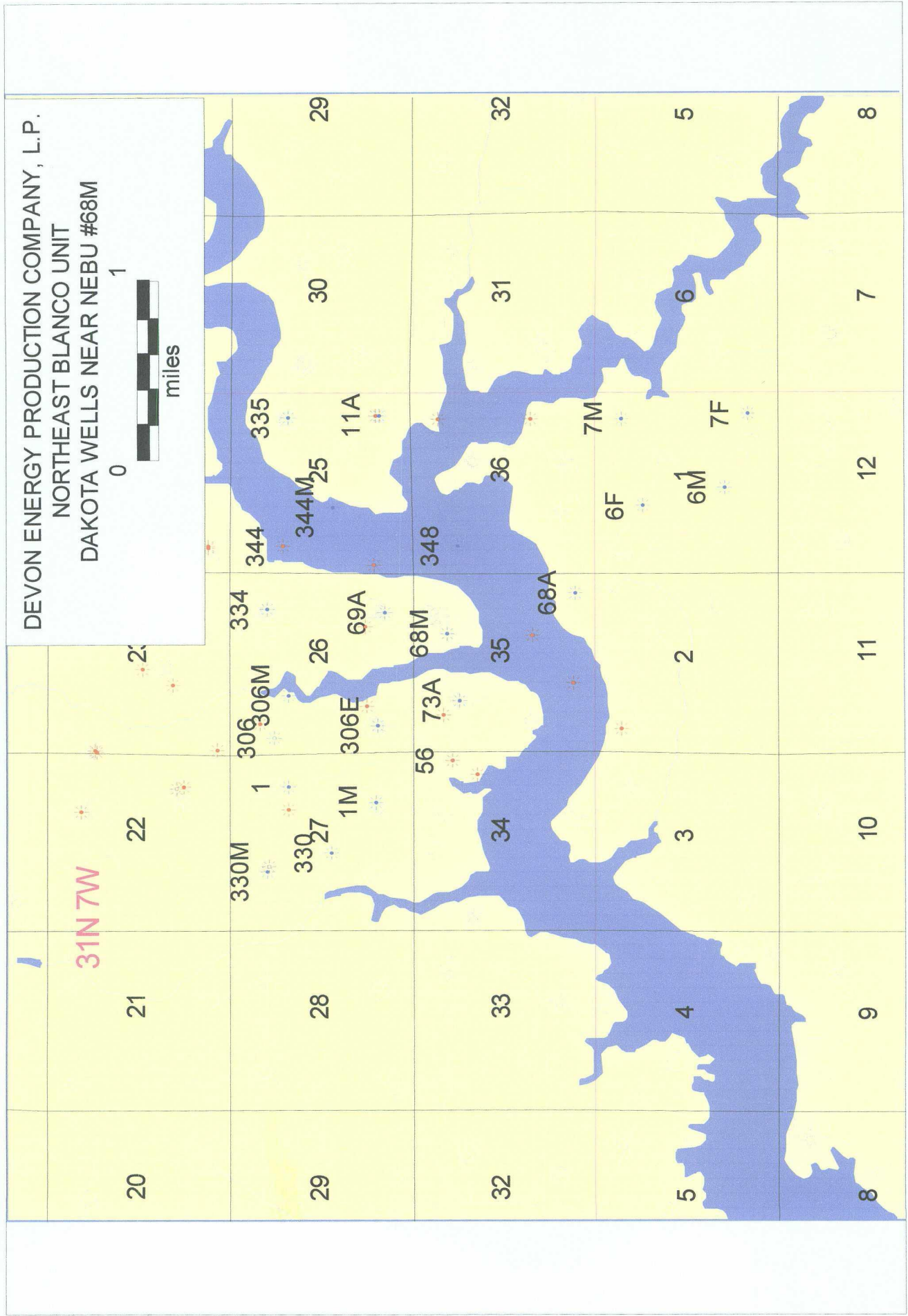


TN*MIN
10 1/2°

0.0 0.5 1.0 1.5 2.0 2.5 3.0 3.5 miles
0 1 2 3 4 5 km

Map created with TOPOID ©2003 National Geographic (www.nationalgeographic.com/topo)





7007 2560 0002 3427 1736

CERTIFIED MAIL™ RECEIPT
(Domestic Mail Only; No Insurance Coverage Provided)

For delivery information visit our website at www.usps.com

DENVER CO 80265

Postage	\$ 0.44
Certified Fee	\$2.80
Return Receipt Fee (Endorsement Required)	\$0.00
Restricted Delivery Fee (Endorsement Required)	\$0.00
Total Postage & Fees	\$ 3.24

0401 SEP 20 2010 FARMINGTON NM 87401 USPS

Sent To: J.H. McElvain Oil & Gas Ltd Ptn.
Street, Apt. No., or PO Box No. % 1050 17th St Ste 1800
City, State, ZIP+4 Denver CO 80265

PS Form 3800, August 2006 See Reverse for Instructions

7007 2560 0002 3427 1662

CERTIFIED MAIL™ RECEIPT
(Domestic Mail Only; No Insurance Coverage Provided)

For delivery information visit our website at www.usps.com

FARMINGTON NM 87402

Postage	\$ 0.44
Certified Fee	\$2.80
Return Receipt Fee (Endorsement Required)	\$0.00
Restricted Delivery Fee (Endorsement Required)	\$0.00
Total Postage & Fees	\$ 3.24

0401 SEP 20 2010 FARMINGTON NM 87401 USPS

Sent To: Conoco Phillips Co. - Ben Malone
Street, Apt. No., or PO Box No. 3401 E. 30th St.
City, State, ZIP+4 Farmington NM 87402-8807

PS Form 3800, August 2006 See Reverse for Instructions

7007 2560 0002 3427 1682

U.S. Postal Service™
CERTIFIED MAIL™ RECEIPT
(Domestic Mail Only; No Insurance Coverage Provided)

For delivery information visit our website at www.usps.com

DALLAS TX 75240

Postage	\$ 0.44
Certified Fee	\$2.80
Return Receipt Fee (Endorsement Required)	\$0.00
Restricted Delivery Fee (Endorsement Required)	\$0.00
Total Postage & Fees	\$ 3.24

0401 SEP 20 2010 FARMINGTON NM 87401 USPS

Sent To: Diverse Energy Investments
Street, Apt. No., or PO Box No. 13455 Noel Rd Ste 2000
City, State, ZIP+4 Dallas TX 75240

PS Form 3800, August 2006 See Reverse for Instructions

7007 2560 0002 3427 1692

U.S. Postal Service™
CERTIFIED MAIL™ RECEIPT
(Domestic Mail Only; No Insurance Coverage Provided)

For delivery information visit our website at www.usps.com

KERRVILLE TX 78029

Postage	\$ 0.44
Certified Fee	\$2.80
Return Receipt Fee (Endorsement Required)	\$0.00
Restricted Delivery Fee (Endorsement Required)	\$0.00
Total Postage & Fees	\$ 3.24

0401 SEP 20 2010 FARMINGTON NM 87401 USPS

Sent To: Charles W. May
Street, Apt. No., or PO Box No. % James Raymond - Po Box 291445
City, State, ZIP+4 Kerrville TX 78029-1445

PS Form 3800, August 2006 See Reverse for Instructions

7007 2560 0002 3427 1705

U.S. Postal Service™
CERTIFIED MAIL™ RECEIPT
(Domestic Mail Only; No Insurance Coverage Provided)

For delivery information visit our website at www.usps.com

KERRVILLE TX 78029

Postage	\$ 0.44
Certified Fee	\$2.80
Return Receipt Fee (Endorsement Required)	\$0.00
Restricted Delivery Fee (Endorsement Required)	\$0.00
Total Postage & Fees	\$ 3.24

0401 SEP 20 2010 FARMINGTON NM 87401 USPS

Sent To: Lonrayn May Hacker
Street, Apt. No., or PO Box No. % James Raymond Po Box 291445
City, State, ZIP+4 Kerrville TX 78029-1445

PS Form 3800, August 2006 See Reverse for Instructions

7007 2560 0002 3427 1742

U.S. Postal Service™
CERTIFIED MAIL™ RECEIPT
(Domestic Mail Only; No Insurance Coverage Provided)

For delivery information visit our website at www.usps.com

KERRVILLE TX 78029

Postage	\$ 0.44
Certified Fee	\$2.80
Return Receipt Fee (Endorsement Required)	\$0.00
Restricted Delivery Fee (Endorsement Required)	\$0.00
Total Postage & Fees	\$ 3.24

0401 SEP 20 2010 FARMINGTON NM 87401 USPS

Sent To: J & M Raymond Ltd
Street, Apt. No., or PO Box No. Po Box 291445
City, State, ZIP+4 Kerrville TX 78029-1445

PS Form 3800, August 2006 See Reverse for Instructions

7007 2560 0002 3427 1644

U.S. Postal Service™
CERTIFIED MAIL™ RECEIPT
 (Domestic Mail Only; No Insurance Coverage Provided)

For delivery information visit our website at www.usps.com

HOUSTON TX 77079

Postage	\$	\$0.44
Certified Fee		\$2.80
Return Receipt Fee (Endorsement Required)		\$0.00
Restricted Delivery Fee (Endorsement Required)		\$0.00
Total Postage & Fees	\$	\$3.24

0401 SEP 20 2010 FARMINGTON NM 87401 USPS

Sent To: *BP America Prod Co Attn: John Larson*
 Street, Apt. No., or PO Box No.: *501 Westlake Park Blvd W1 19.108*
 City, State, ZIP+4: *Houston TX 77079*

PS Form 3800, August 2006 See Reverse for Instructions

7007 2560 0002 3427 1651

U.S. Postal Service™
CERTIFIED MAIL™ RECEIPT
 (Domestic Mail Only; No Insurance Coverage Provided)

For delivery information visit our website at www.usps.com

OKLAHOMA CITY OK 73102

Postage	\$	\$0.44
Certified Fee		\$2.80
Return Receipt Fee (Endorsement Required)		\$0.00
Restricted Delivery Fee (Endorsement Required)		\$0.00
Total Postage & Fees	\$	\$3.24

0401 SEP 20 2010 FARMINGTON NM 87401 USPS

Sent To: *Canaan Resources LLC*
 Street, Apt. No., or PO Box No.: *211 N. Robinson Ave Ste N1000*
 City, State, ZIP+4: *OKlahoma City OK 73102*

PS Form 3800, August 2006 See Reverse for Instructions

7007 2560 0002 3427 1729

U.S. Postal Service™
CERTIFIED MAIL™ RECEIPT
 (Domestic Mail Only; No Insurance Coverage Provided)

For delivery information visit our website at www.usps.com

KERRVILLE TX 78029

Postage	\$	\$0.44
Certified Fee		\$2.80
Return Receipt Fee (Endorsement Required)		\$0.00
Restricted Delivery Fee (Endorsement Required)		\$0.00
Total Postage & Fees	\$	\$3.24

0401 SEP 20 2010 FARMINGTON NM 87401 USPS

Sent To: *Jamacana LLC*
 Street, Apt. No., or PO Box No.: *6 James Raymond Po Box 291445*
 City, State, ZIP+4: *Kerrville TX 78029-1445*

PS Form 3800, August 2006 See Reverse for Instructions

7007 2560 0002 3427 1675

U.S. Postal Service™
CERTIFIED MAIL™ RECEIPT
 (Domestic Mail Only; No Insurance Coverage Provided)

For delivery information visit our website at www.usps.com

DALLAS TX 75225

Postage	\$	\$0.44
Certified Fee		\$2.80
Return Receipt Fee (Endorsement Required)		\$0.00
Restricted Delivery Fee (Endorsement Required)		\$0.00
Total Postage & Fees	\$	\$3.24

0401 SEP 20 2010 FARMINGTON NM 87401 USPS

Sent To: *Frank C. Davis III*
 Street, Apt. No., or PO Box No.: *3219 Bryn Mawr*
 City, State, ZIP+4: *Dallas TX 75225*

PS Form 3800, August 2006 See Reverse for Instructions