

1R - 87

APPROVALS

YEAR(S):

2011

Hansen, Edward J., EMNRD

From: Hansen, Edward J., EMNRD
Sent: Tuesday, March 01, 2011 5:05 PM
To: 'Jason Henry'
Cc: Leking, Geoffrey R, EMNRD; Jeffrey P Dann; 'Ron Rounsaville'; 'bbyerly@novatraining.cc'
Subject: RE: NMSLO Request regarding monitor wells at RL Rogers site (1R-0087)

**RE: Groundwater Monitoring Wells Plugging Request for the Plains Marketing's
R. L. Rogers Release Site (1R-87)
Section 32, T19S, R37E, NMPM, Lea County, New Mexico
Groundwater Monitoring Wells Plugging Approval**

Dear Mr. Conder:

The New Mexico Oil Conservation Division (OCD) has received Plains Marketing's (Plains) request to close the above-referenced site (dated March 1, 2011). The OCD hereby conditionally approves the request to plug the groundwater monitoring wells at the R. L. Rogers Release Site:

Plains must use material to plug the groundwater monitoring wells at the site of a cement grout with 1% to 3% bentonite or other material approved by the OCD. Please submit to the OCD a final plugging report within 90 days of receipt of this notice.

Please be advised that OCD approval of this request does not relieve the owner/operator of responsibility should operations pose a threat to ground water, surface water, human health or the environment. In addition, OCD approval does not relieve the owner/operator of responsibility for compliance with any OCD, federal, state, or local laws and/or regulations. Also, please be advised, if warranted, an additional groundwater monitoring well(s) may be required for the Bob Durham Release Site (AP-16) to delineate the release.

If you have any questions regarding this matter, please contact me at 505-476-3489.

Edward J. Hansen
Hydrologist
Environmental Bureau

From: Jason Henry [<mailto:JHenry@paalp.com>]
Sent: Tuesday, March 01, 2011 11:30 AM
To: Hansen, Edward J., EMNRD
Cc: Jeffrey P Dann; 'Ron Rounsaville'; 'bbyerly@novatraining.cc'
Subject: NMSLO Request regarding monitor wells at RL Rogers site (1R-0087)

Ed,

As we discussed earlier today, Plains is requesting NMOCD approval to P&A the monitor wells associated with the RL Rogers site (1R-0087) based on the attached directive from the NMSLO. The RL Rogers site was approved for closure in January 2002 but the NMOCD requested that the site monitor wells be left in place as down-gradient monitoring points for the Bob Durham site (AP-0016). Since that time, you have approved the use of an alternative monitor well (MW-56, not associated with the RL Rogers site) for down-gradient monitoring of MW-38 at the Bob Durham site. I have attached

a Bob Durham site map that includes the location of MW-56, a groundwater gradient map for the Bob Durham site from Dec. 2009, and a map showing both the Bob Durham and RL Rogers sites.

Please let me know if you have any questions or need more information.

Thank you,
Jason Henry
575-441-1099



Ray Powell, M.S., D.V.M.
COMMISSIONER

State of New Mexico
Commissioner of Public Lands

310 OLD SANTA FE TRAIL
P.O. BOX 1148
SANTA FE, NEW MEXICO 87504-1148

COMMISSIONER'S OFFICE

Phone (505) 827-5760
Fax (505) 827-5766
www.nmstatelands.org

February 16, 2011

CERTIFIED MAIL

7001 2510 0000 3159 3520

Plains Pipeline Company
333 Clay Street, Suite 1600
Houston, TX 77210

Attn: Jeffrey Dann

Re: Application for Water Easement Permit No. WM-0074

SE4NE4 of Section 25, Township 19 South, Range 36 East

Dear Mr. Dann:

While reviewing this file, it was brought to our attention that this easement has been inactive since 2004.

A field inspection conducted on November 4, 2009 states that 3 monitoring wells are still in place. The report also states that your files indicate that these monitoring wells were turned over to the NMOCD for future groundwater monitoring purposes. We have been advised that NMOCD does not take over such wells. Therefore, since Plains Pipeline Company acquired this site from Texas New Mexico Pipeline Company several years ago. We are requesting that Plains Pipeline Company have these 3 monitoring wells plugged and a plugging report be submitted to our office as soon as possible.

The New Mexico State Land Office thanks you for your cooperation.

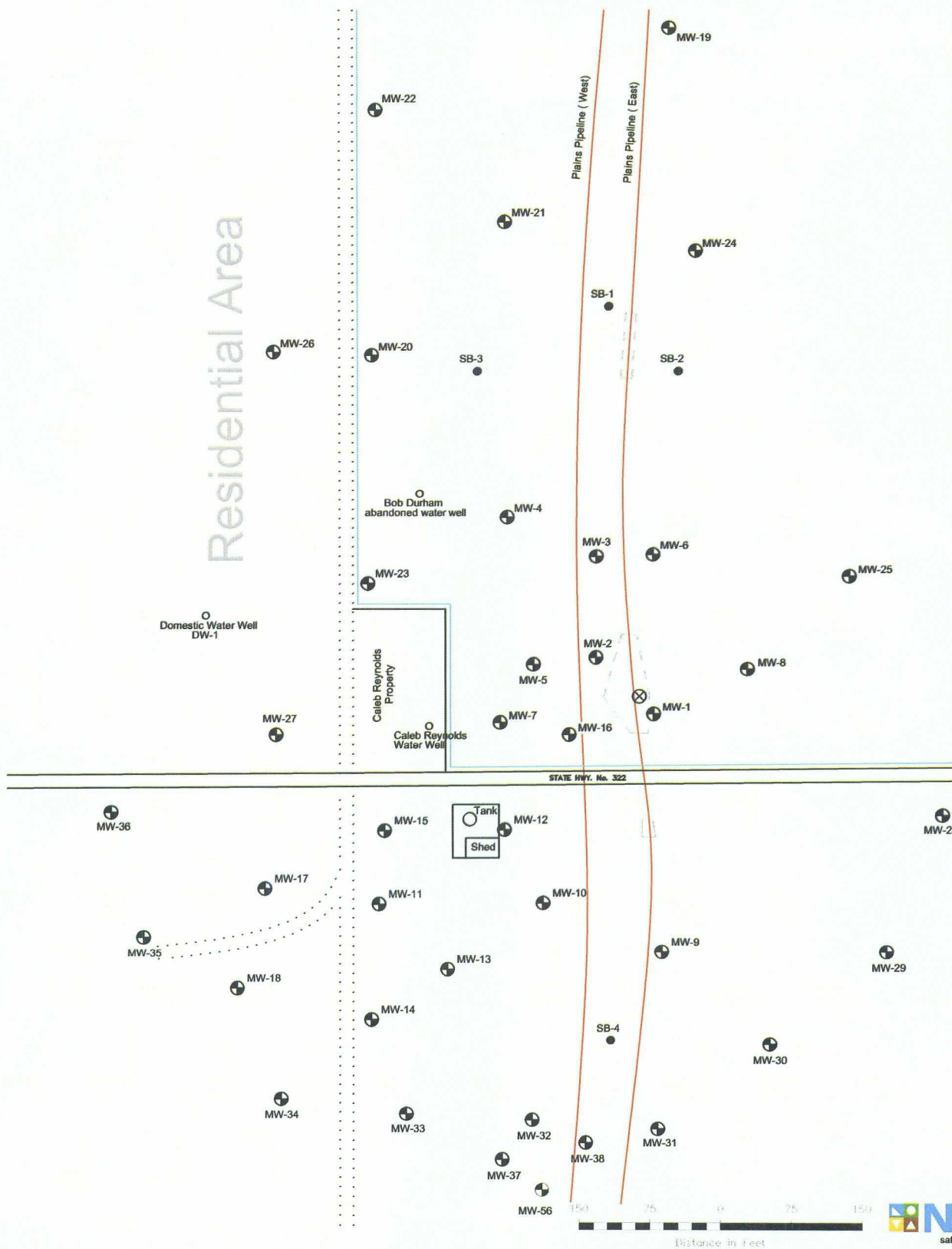
Please contact us at (505) 827-5789 for Anna Villa Rights of Way and Water Resources Bureau Manager, if you have any questions regarding this issue.

Sincerely,

A handwritten signature in cursive script, appearing to read "Philip Garcia".

Philip Garcia, Management Analyst
Right of Way and Water Resources Bureau
Surface Resources Division

Residential Area



LEGEND:

- ⊕ Plains Monitor Well Locations
- Soil Boring Locations
- Excavation Areas
- ⊗ Release Point
- Bob Durham Property Line
- Dirt Road

Figure 2
Site Map

Plains Marketing, L.P.
Bob Durham
Lea County, NM

NOVA Safety and Environmental

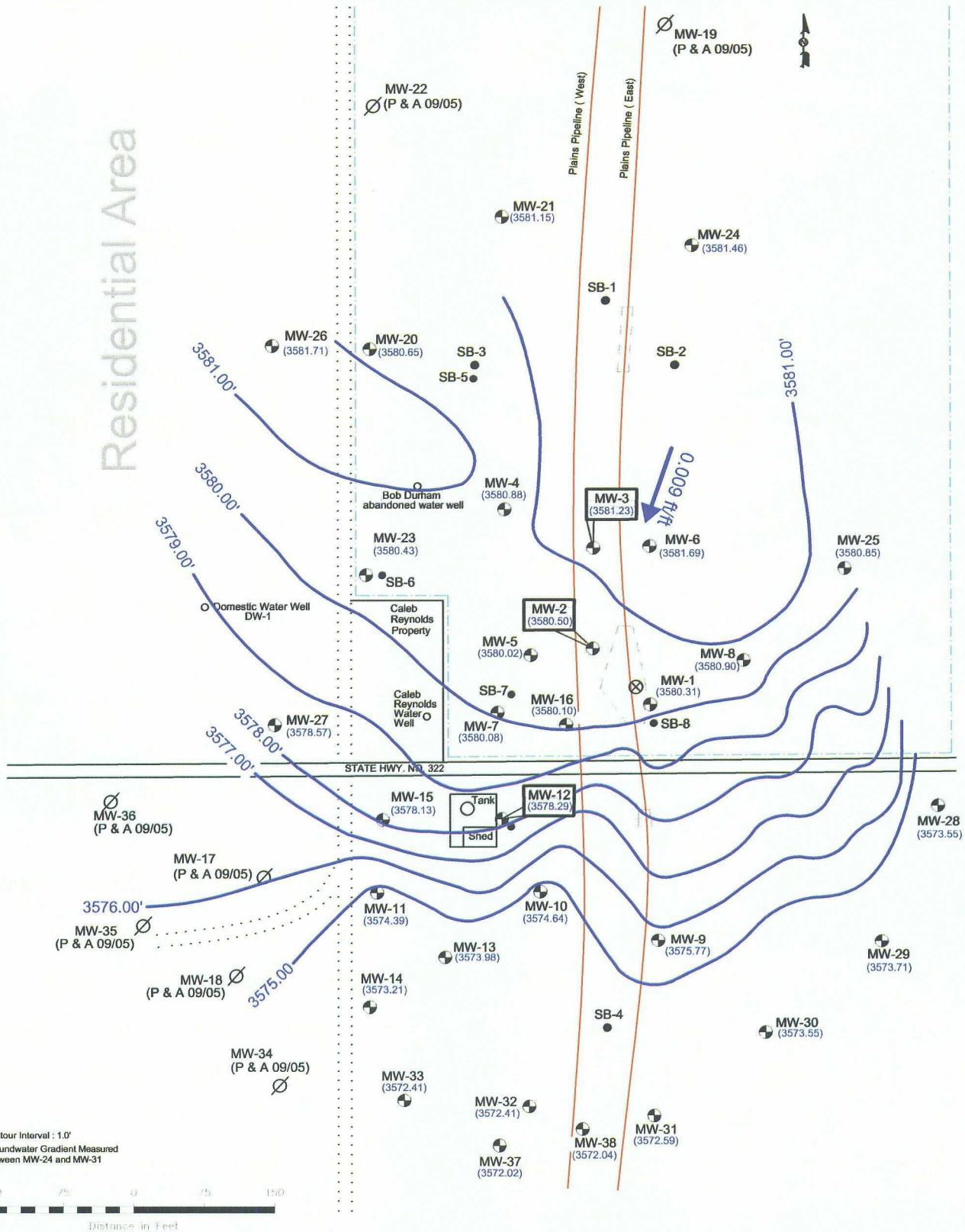
NW1/4 NW1/4 Sec 32 T19S R37E Lat. 32° 37' 27" Long. 103° 16' 53"

Scale: 1" = 150' Drawn By: DPM Prep. By: RKR

June 09, 2010



Residential Area



Note

- Contour Interval : 1.0'
- Groundwater Gradient Measured Between MW-24 and MW-31



LEGEND:

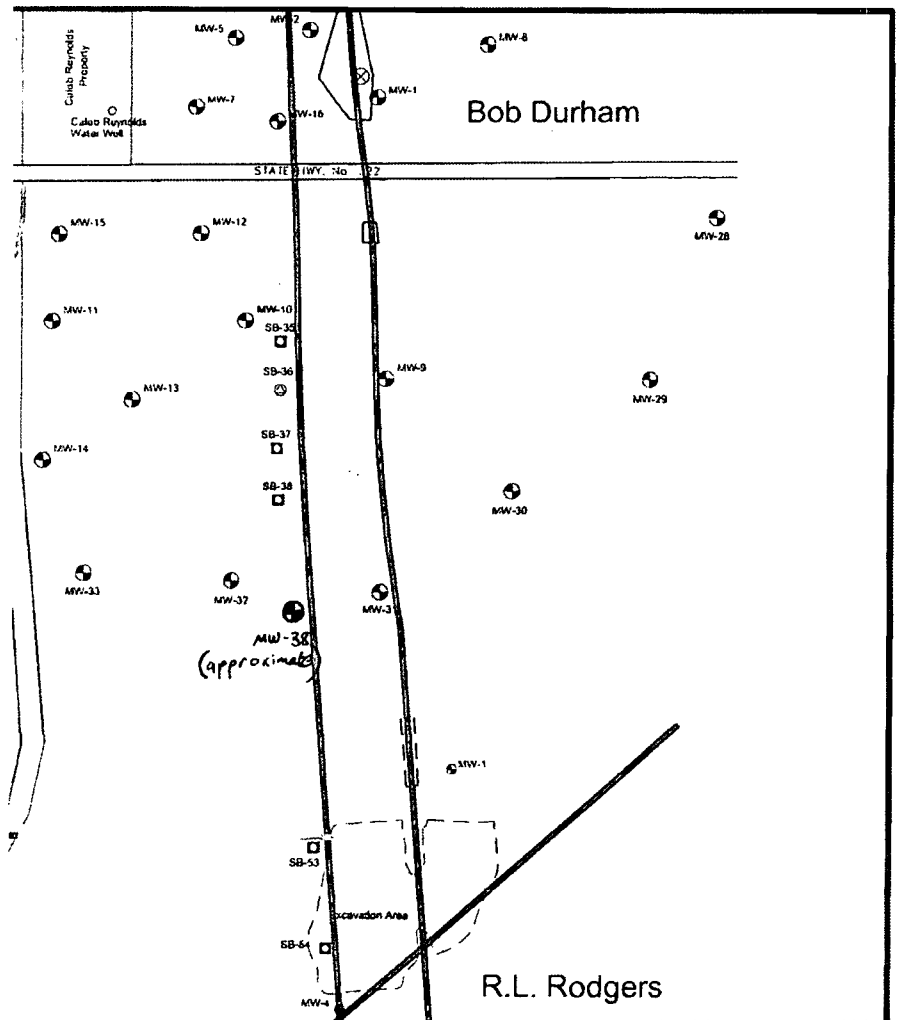
- Monitor Well Location
- Release Point
- Plains Pipeline L.P.
- Groundwater Elevation Contour Line
- Groundwater Gradient and Magnitude
- Groundwater Elevation (feet)
- Road
- Excavation Areas
- Soil Boring Locations
- Bob Durham Property Line

Figure 2D
Inferred Groundwater
Gradient Map
(11/12/09)
NMOCD Reference # AP-0016
Plains Marketing, L.P.
Bob Durham
Lea County, NM



2057 Commerce Drive
Midland, Texas 79703
432.520.7720
www.novasafetyandenvironmental.com

December 15, 2009	Scale: 1" = 150'	CAD By: SAT	Checked By: RKR
32° 37' 27"N 103° 16' 53"W		NW1/4 NW1/4 Sec 32 T19S R37E	





NEW MEXICO ENERGY, MINERALS and NATURAL RESOURCES DEPARTMENT

GARY E. JOHNSON

Governor

Carol S. Leach

Acting Cabinet Secretary

Lori Wrotenbery

Director

Oil Conservation Division

January 24, 2002

CERTIFIED MAIL

RETURN RECEIPT NO. 3929-3930

Mr. Wayne Brunette
EOTT Energy Pipeline Partnership
PO Box 1660
Midland, TX 79702

RE: CASE #1R0087 R.L. ROGERS LEAK SITE

Dear Mr. Brunette:

The New Mexico Oil Conservation Division (OCD) has reviewed the following EOTT Energy Pipeline Limited Partnership documents, which were submitted to the OCD by EOTT's consultant Environmental Technology Group, Inc (ETGI.)

- November 21, 2001 correspondence RE R.L. Rogers Release Site
- April 2001 "ANNUAL MONITORING REPORT, EOTT PIPELINE COMPANY, R.L. ROGERS, LEA COUNTY, NEW MEXICO."
- February 2001 "2000 ANNUAL GROUNDWATER MONITORING REPORT, EOTT PIPELINE COMPANY, R.L. ROGERS RELEASE SITE, LEA COUNTY NEW MEXICO."

These documents contain the results of ETGI's ground water monitoring activities following discovery of free phase hydrocarbons on groundwater in November 1999. The document requests closure of the site since ground water has been found in compliance with New Mexico Water Quality Control Commission (WQCC) standards as demonstrated in six consecutive sampling events. The November 12, 2001 document also proposes to plug and abandon the site ground water monitoring wells.

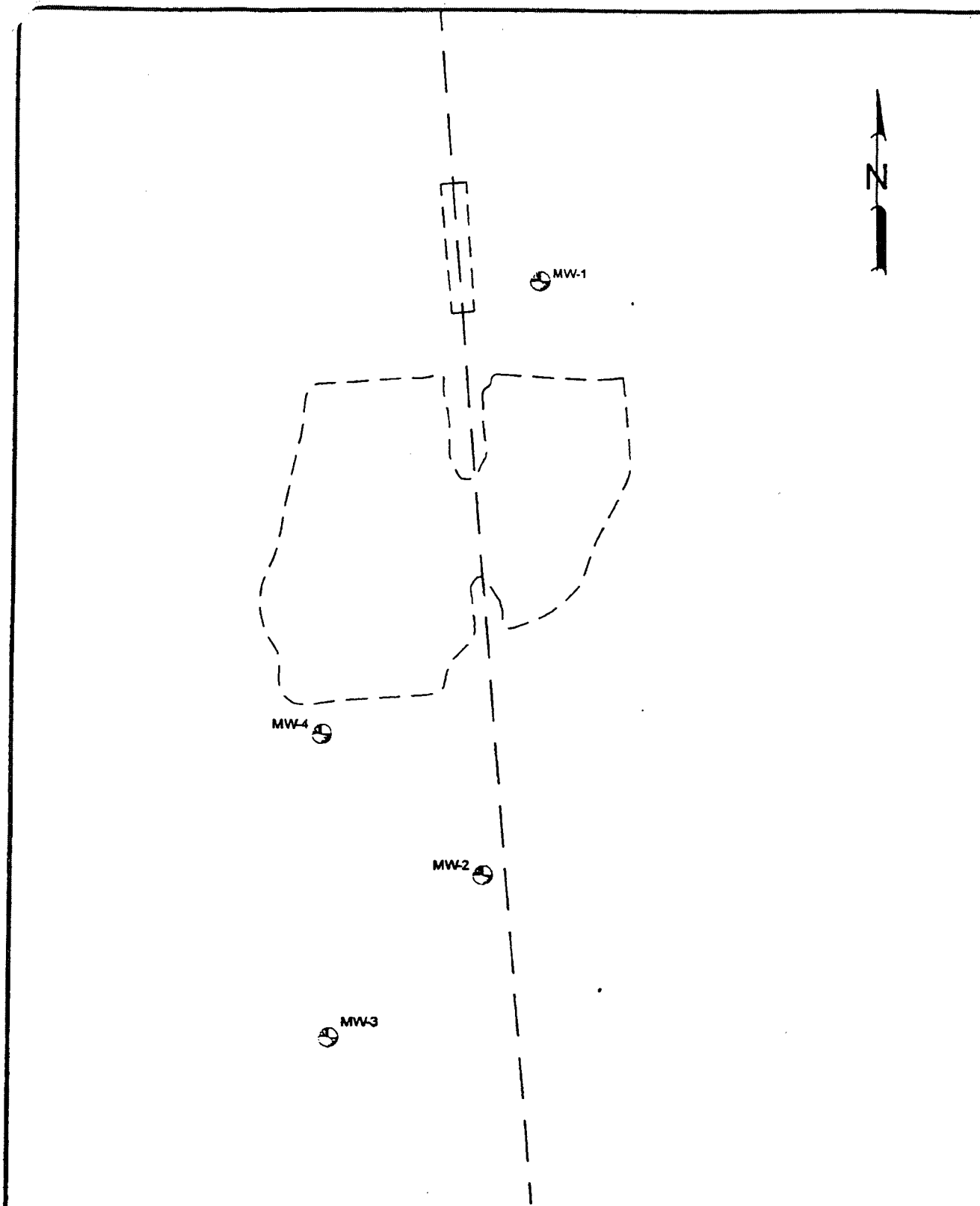
The closure for this site is approved on the condition that the monitor wells be maintained for use as down-gradient control monitoring sites for the Bob Durham project.

Please be advised that OCD approval does not relieve EOTT of responsibility if remaining contaminants are found to pose a future threat to surface water, ground water, human health or the environment. In addition, OCD approval does not relieve EOTT of responsibility for compliance with any other federal, state, tribal or local laws and regulations. If you have any questions, please email me or call me at (505) 476-3493.

Sincerely,

Randolph Bayliss, P.E.
Hydrologist
Environmental Bureau

xc: Chris Williams, OCD Hobbs District Office
Ann Moore, ETGI; Jimmie B. Cooper



LEGEND:

- ⊕ ETGI Monitoring Well Locations
- EOTT Pipeline
- Former Excavated Area

**Figure 1
Site Map**

**EOTT Energy Corp.
R. L. Rodgers
Lea County, NM**



**Environmental Technology
Group, Inc.**

Scale: 1" = 60'	Prep By: JDL	Checked By: JH
November 14, 2001 ETGI Project #: EOT2D41C		