



IN REPLY REFER TO:

UNITED STATES
DEPARTMENT OF THE INTERIOR
GEOLOGICAL SURVEY

Drawer 1857
Roswell, New Mexico

September 24, 1962

C. W. Trainer
P. O. Box 2222
Hobbs, New Mexico

Dear Sir:

Your letter of September 17, 1962, requested our approval to commingle the production from Federal oil and gas leases Las Cruces 066147 and 066147-C at your tank battery in the NW $\frac{1}{4}$ SW $\frac{1}{4}$, sec. 3, T. 20 S., R. 35 E., Lea County, New Mexico. The production on each lease is from the Pearl Queen Pool and both leases have the same Federal royalty rate, lessee and operator.

The method of commingling described by the diagrams attached to your letter is hereby approved. You are requested to notify our Hobbs office when the installation is completed so that a field inspection of the system can be made.

Very truly yours,

JOHN A. ANDERSON
Regional Oil and Gas Supervisor

C. W. TRAINER

P. O. BOX 2222

PHONE EX 7-1518

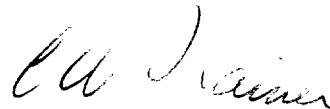
205 NORTH LINAM STREET

HOBBS, NEW MEXICO

Attached is a schematic drawing of my proposed metering setup to meter the oil from my Western "C" Lease before commingling it with the oil from my Western Lease. We would measure the total production in the tanks, meter the "C" oil, then subtract to determine the Western production.

The gas would be commingled ahead of the sales meter with provision for measuring the GOR on any well at any time. Monthly gas sales would be divided according to GOR.

Calibration of the meter will be done by switching the "C" production through the heater into a tank by itself once every three months. By gauging the tank we can determine the meter factor which will correct for both BS&W and meter error. These calibration tests can be done at any time on request.



C. W. Trainer

Owner - Operator

C. W. TRAINER

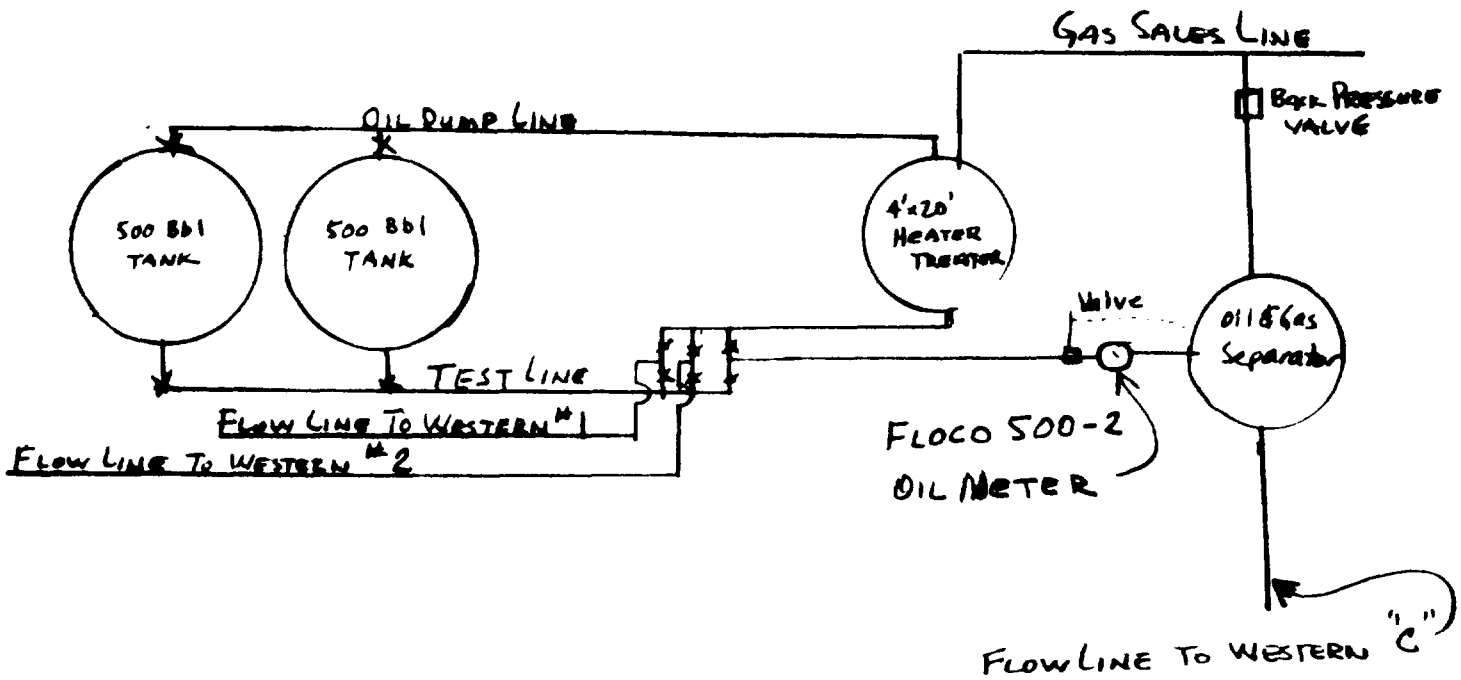
P. O. BOX 2222

PHONE EX 7-1510

205 NORTH LINAM STREET

HOBBS, NEW MEXICO

METER CONNECTION AT WESTERN
TANK BATTERY TO CONNECT IN WESTERN "C" LEASE



9-18-62 C W Trainer