



MARATHON OIL COMPANY

February 20, 1967

P. O. Box 220  
Hobbs, New Mexico

New Mexico Oil Conservation Commission  
P. O. Box 2088  
Santa Fe, New Mexico

Attention: Mr. A. L. Porter, Jr.

Dear Sir:

Marathon Oil Company hereby respectfully requests an exception to Rule 309-A to permit the commingling of Stateline Ellenburger Pool production from the McDonald State A/c 3-A Lease, comprising the S/2 of the SE/4, Section 32, T.23S, R.38E, with Stateline Ellenburger Pool production from the McDonald State A/c 3-B Lease, comprising the N/2 of the SW/4 of the above section, township, and range.

Attached hereto is a plat showing the wells on the subject leases and the formation in which they are completed along with a diagrammatic sketch of the commingling facility, showing it to be of an acceptable design in accordance with the provisions of the Commission "Manual for the Installation and Operation of Commingling Facilities".

All production to be commingled is from the same common source of supply. As may be noted on the attached diagrammatic sketch adequate facilities are provided for accurately determining production from each well.

The ownership of the subject leases are common throughout including working interest ownership, royalty ownership and overriding ownership.

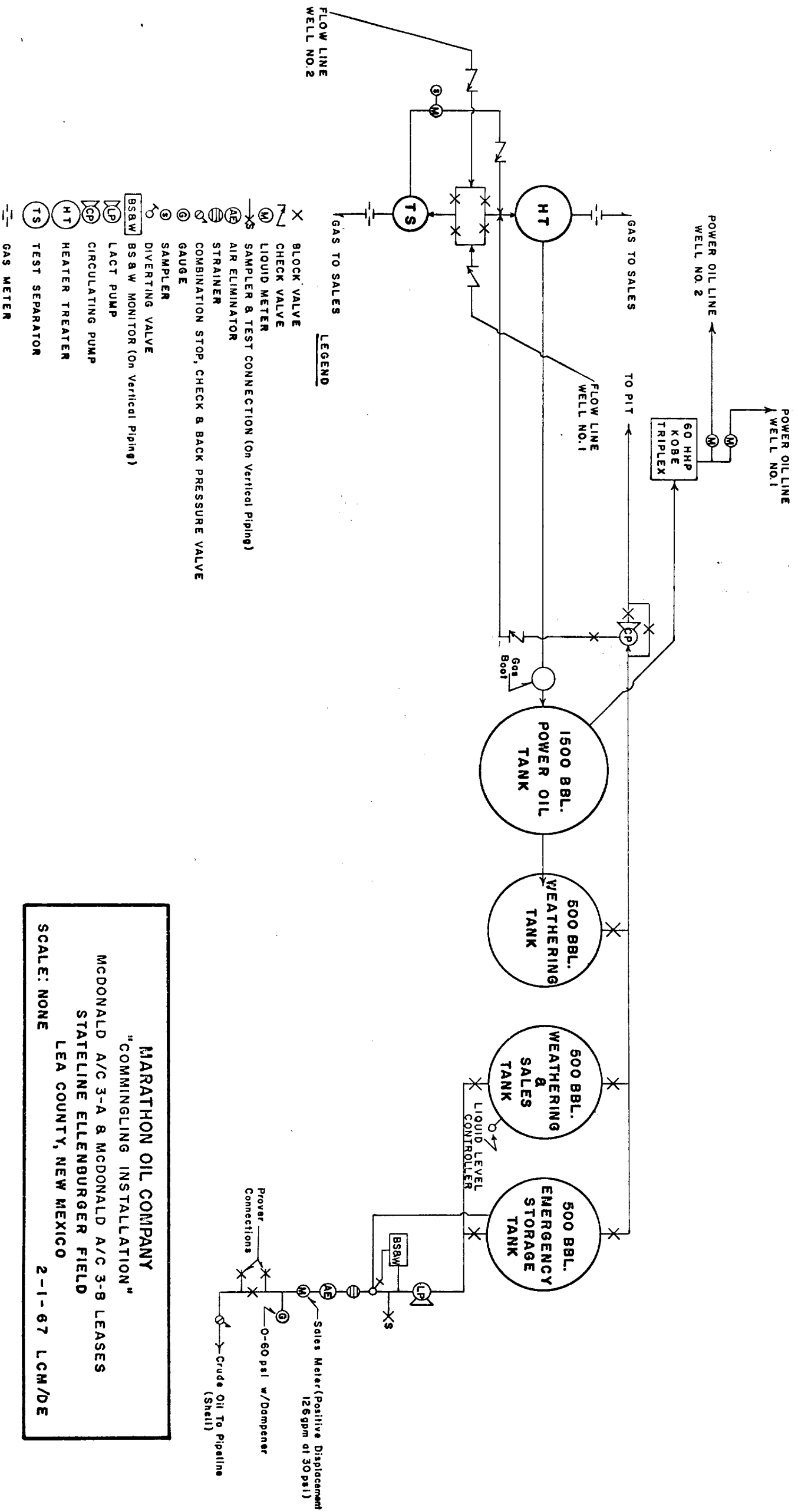
Yours very truly,

MARATHON OIL COMPANY  
Engineering Department

John R. Barber  
Area Petroleum Engineer

LCM:bje

cc: NMOCC - Hobbs



MARATHON OIL COMPANY  
 "COMMINGLING INSTALLATION"  
 McDONALD A/C 3-A & McDONALD A/C 3-B LEASES  
 STATELINE ELLENBURGER FIELD  
 LEA COUNTY, NEW MEXICO

SCALE: NONE 2-1-67 LCM/DE

R 38 E

B.H. Grube

Marathon

Marathon

U.S.

State

State

Marathon

Marathon

B.H. Grube  
et al

T  
23  
S



Marathon  
A/C 3-B

32

Std. of Tex.

1

2-32

TANK BATTERY

"McDonald"

1

U.S.

Std. of Tex.

Marathon  
A/C 3-A

Humble

Carper "A1"



1-32

1

State

State

"McDonald"

State

Humble

Continental  
"A"

Std. of Tex.

Seco

2

1-B

3

State

State

"Cont'l-State"

Crawford-St.

T  
24  
S

LEGEND

● STATELINE ELLENBURGER

MARATHON OIL COMPANY

"Plat of McDonald A/C 3 State Lease"

STATELINE ELLENBURGER FIELD

LEA COUNTY, NEW MEXICO

SCALE: 1"=1000'

2-3-67