

SHELL OIL COMPANY

WESTERN DIVISION
P. O. BOX 1509
MIDLAND, TEXAS 79701

October 13, 1967

Subject: Application for Exception
to Rule 309-B

New Mexico Oil Conservation Commission
Post Office Box 2088
Santa Fe, New Mexico 87501

OCT 17 1967

Gentlemen:

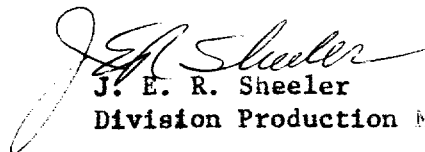
Shell Oil Company hereby makes application for administrative approval to commingle before marketing production from the Hodges-Federal (S/2, Section 23 and S/2, Section 24, T-8-S, R-30-E) and the Hodges-Federal "C" (SW/4, Section 22, T-8-S, R-30-E) leases, Cato Field, Chaves County, New Mexico.

We propose to commingle without separately metering the production from each lease, as both leases are filed under State No. NM-3519 and royalty interests are common throughout. Allocation of production from each well and each lease will be based on monthly well tests.

All wells produce from the same zone with similar gravities; therefore, no change in the commercial value of the production is anticipated.

Attached for your consideration are a lease plat, schematic diagram of the proposed installation, and letters from all parties owning an interest in the leases and the purchaser of the production consenting to the proposed commingling. If additional information is required, please contact this office.

Yours very truly,


J. E. R. Sheeler
Division Production Manager

RJC:ERW

Attachments

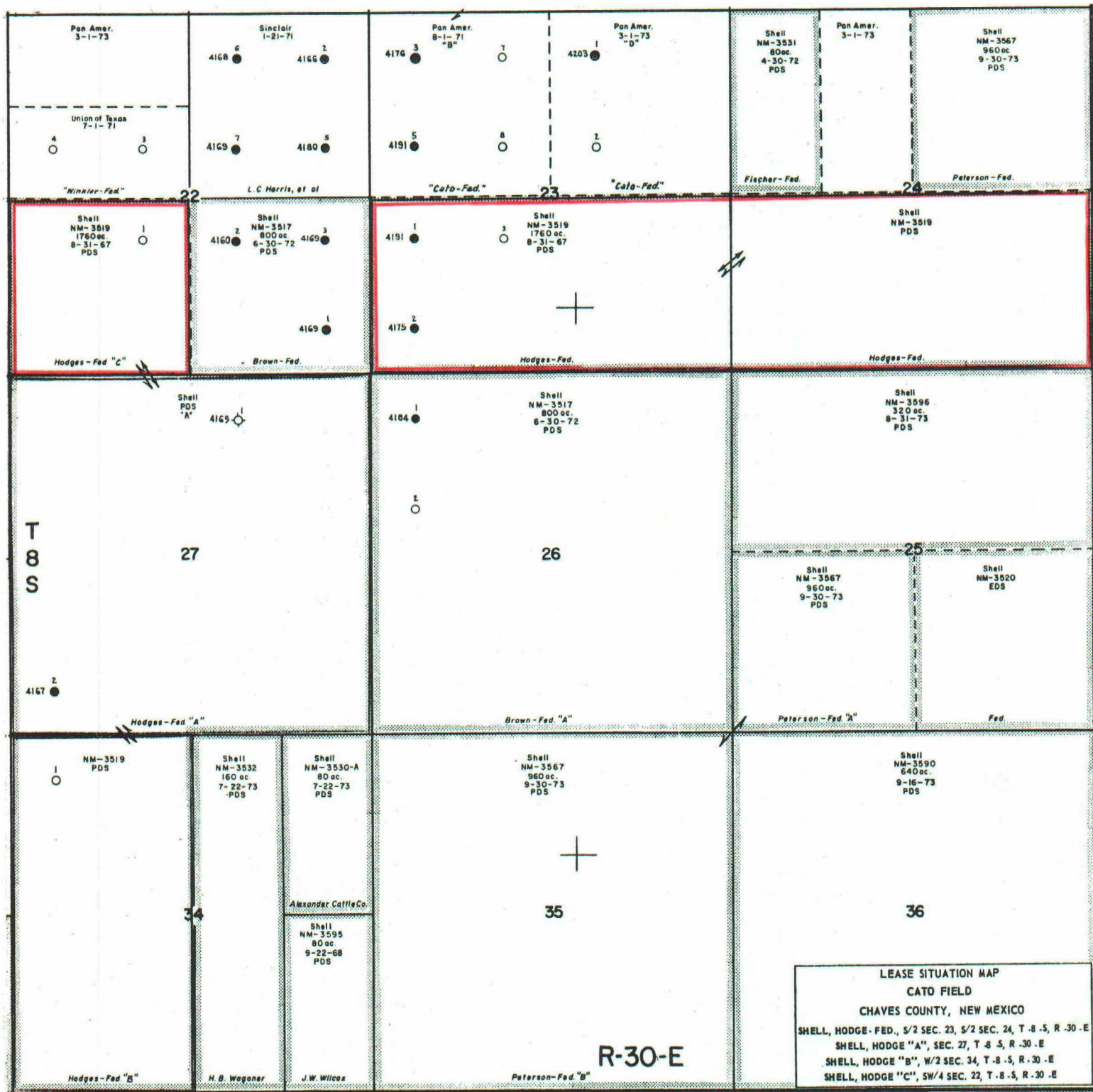
УНАДЯМОУ ДО ДІЯНЬ

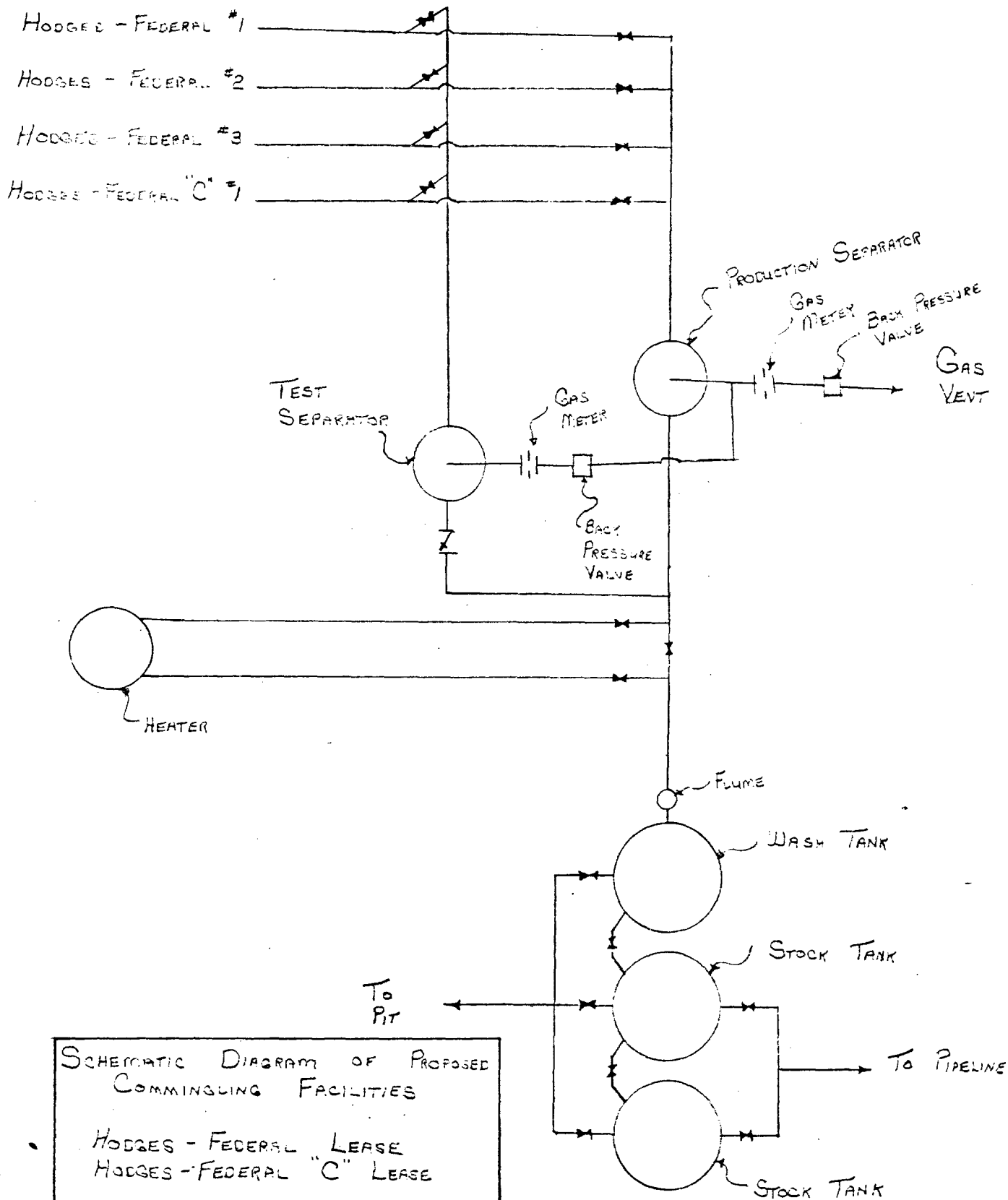
100-2441-10465
 100-2441-10465
 100-2441-10465



1. *Phragmites* (common in the marshes of the lower Mississippi River and in the coastal marshes of the Gulf of Mexico).

Figure 1. The effect of the concentration of the *Agrobacterium* suspension on the transformation efficiency of *Agrobacterium* strains. The *Agrobacterium* strains were grown in the YEA medium for 24 h at 28°C. The cell concentration of the strains was adjusted to 10⁸ cells/ml. The cell suspension was mixed with the plant tissue and incubated for 24 h at 28°C. The plant tissue was then cultured on the selective medium. The transformation efficiency was determined as the number of transformants per 100 mg of plant tissue. The data were the mean of three independent experiments.





SCHEMATIC DIAGRAM OF PROPOSED
COMMINGLING FACILITIES

HODGES - FEDERAL LEASE
HODGES - FEDERAL "C" LEASE

CATO FIELD

CHAVES COUNTY, NEW MEXICO



UNITED STATES
DEPARTMENT OF THE INTERIOR
GEOLOGICAL SURVEY

Drawer 1857
Roswell, New Mexico 88201

September 13, 1967

Shell Oil Company
P.O. Box 1509
Midland, Texas 79701

Attention: Mr. J. E. R. Sheeler

Gentlemen:

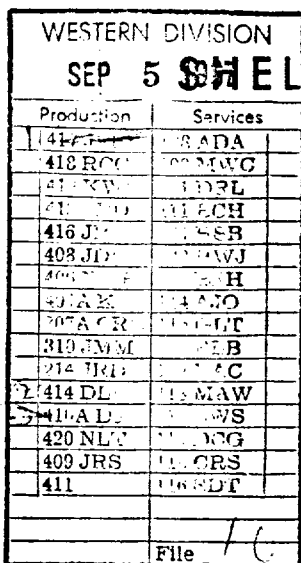
Your application of August 30, 1967, to the Bureau of Land Management, Santa Fe, New Mexico requesting approval to commingle production on Federal leasehold New Mexico 022636 has been referred to this office.

Your application advises that Shell has designated various portions of lease New Mexico 022636 as the Hodge-Federal, Hodge-Federal A, B, and C and you are requesting approval to commingle San Andres production from these portions of the leasehold. Although Shell has given the lease separate designations, it still remains one Federal lease and approval to commingle production from a single formation on one Federal leasehold is not required.

This office has no objection to commingling San Andres production from the portions of leasehold New Mexico 022636 Shell has designated as the Hodge-Federal and Hodge-Federal A, B, and C.

Sincerely yours,

BILLY J. SHOGER
Acting Oil and Gas Supervisor



August 30, 1967

Re: Hodge-Federal Lease, S 1/2
Section 23 and S 1/2 Section 24
Hodge-Federal "A" Lease, Section 27
Hodge-Federal "B" Lease W 1/2 Section 24
Hodge-Federal "C" Lease SW 1/4 Section 22
T-8-S, R-30-E
Chaves County, New Mexico

Dear Mr. White:

All wells produce from the same pool with similar gravities; therefore, no change in the commercial value of the production is anticipated.

Yours very truly,

RJC: CW

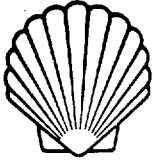
J. E. R. Sheeler
Division Production Manager

APPROVED :

By: Frederick A. Black

Title : _____

Date: 9/1/67



SHELL OIL COMPANY

WESTERN DIVISION
P. O. BOX 1509
MIDLAND, TEXAS 79701

August 30, 1967

Re: Hodge-Federal Lease, S 1/2
Section 23 and S 1/2 Section 24
Hodge-Federal "A" Lease, Section 27
Hodge-Federal "B" Lease W 1/2 Section 24
Hodge-Federal "C" Lease SW 1/4 Section 22
T-8-S, R-30-E
Chaves County, New Mexico

The Blanco Company
~~Blanco Oil Company~~
P. O. Box 1150
Roswell, New Mexico 88201

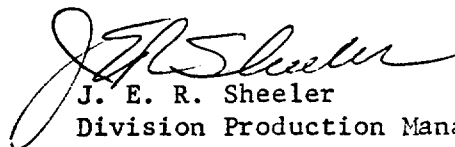
Gentlemen:

Shell Oil Company proposes to commingle production from the subject leases into a common tank battery. All of the leases are filed under State No. N.M. 3519 and U.S.G.S. Serial No. N.M. 022636 with common royalty interests throughout. The leases have been given separate designations within Shell Oil Company for convenience in well nomenclature.

All wells produce from the same pool with similar gravities; therefore, no change in the commercial value of the production is anticipated.

In order to support Shell's application to the New Mexico Oil Conservation Commission for approval to commingle this production, we would appreciate your indicating your approval in the space provided below and returning two copies to this office.

Yours very truly,


J. E. R. Sheeler
Division Production Manager

RJC:CW

APPROVED: THE BLANCO COMPANY

By: 

Title: President

Date: 9-1-67

SCURLOCK OIL COMPANY

HOUSTON CLUB BUILDING

HOUSTON, TEXAS

Mu 3-1092

October 5, 1967

RECEIVED	
Raw Material Supply	
10/11/67	
OCT 6 1967	
Mr. Brown	Mr. Brown
JCH	TAM
TEA	CPA
CC	BB
Call-up	
Discuss	
File	

Address reply to:
414 Mid America Bldg.
Midland, Texas 79701

Shell Oil Company
Houston-Midland Raw Material Supply
Box 1509
Midland, Texas


Reference: Hodges Fed. and Hodges Fed. "C" Leases
Cato (San Andres) Field, Chaves Co., N.M.

Gentlemen:

We understand that you plan to propose to commingle production from the two referenced leases into common tankage. Scurlock Oil Company is the purchaser of production from these leases and wish to advise you that we have no objections to purchasing oil from the commingled storage. If we can assist you in any way, please let us know.

Very truly yours,

SCURLOCK OIL COMPANY


V.G. Brown

VGB/ki

cc/Houston