



CRB 10-17-95

September 25, 1995

New Mexico Oil Conservation Division
2040 South Pacheco
PO Box 6429
Santa Fe, NM 87505

Attn: Mr. William J. LeMay
Division Director, New Mexico Conservation Division

**Re: Exception to Rule 309-A
Administrative Approval to Lease Commingle
B. F. Harrison "B" & B. F. Harrison "C" leases
Section 9, Tws. 23S, Rng. 37E
Lea County, New Mexico**

Dear Mr. LeMay,

Texaco Exploration and Production Inc. respectfully requests administrative approval to commingle production from the B. F. Harrison "B" and the B. F. Harrison "C" leases. The production from both leases would be commingled in a common facility located in unit letter C, section 9, township 23S, and range 37E.

Texaco is in preparation to recompleate the B. F. Harrison "C" #1 well in the Southwest Teague - Glorieta Upper Paddock producing interval. Offset Paddock wells in the North Teague area indicate that the production from the B. F. Harrison "C" #1 will be of a "sour" nature. NMOCD and Texas New Mexico Pipeline regulations require that "sour" production be stored in a "sour" storage facility. At this time, Texaco does not own or operate an appropriate facility on the B. F. Harrison "C" lease. However, a "sour" facility is currently in operation on the B. F. Harrison "B" lease which is due North of the B. F. Harrison "C" lease. Texaco proposes to route the "sour" production from the B. F. Harrison "C" #1 to the "sour" battery on the B. F. Harrison "B" lease.

For further information, please see the attached acreage plats, facility diagrams, area maps, and lists of mineral interest owners.

All mineral interest holders have been notified of this proposal by copy of this package sent by certified mail. If you have any questions concerning this request please contact Darrell J. Carriger at (505) 397-0426. Thank you for your consideration of this proposal.

Sincerely,

Russell S. Pool
Hobbs Operating Unit Sr. Engineer

cc: NMOCD-Hobbs

DJC/s

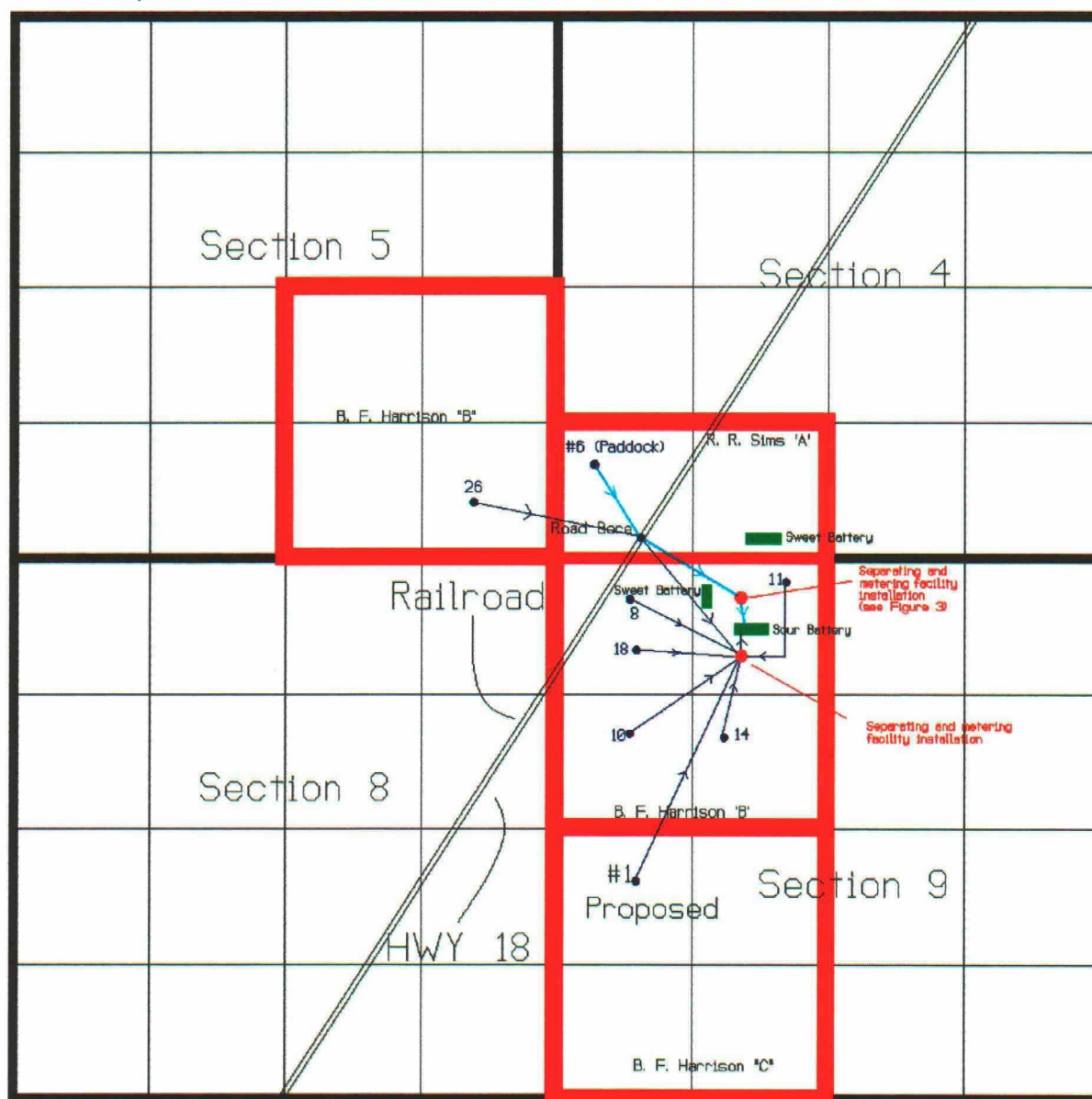
file
chrono
Attachments

**The following informational items are required by Rule 309-B
(administrative approval for lease commingling).**

1. Production from the Southwest Teague-Glorieta Upper Paddock interval and the San Andres interval on the B. F. Harrison "B" lease are surface commingled according to Commingling Order PC - 883 (attached). Also the Paddock production from the R. R. Sims "A" #6 and the above production are lease commingled according to order CTB-412.
2. The facility installation (please see the attached diagram) is in compliance with the "Manual for the Installation and Operation of Commingling Facilities".
- 3-4. All mineral interest holders and transporters have been notified of this proposal by copy of this application sent by certified mail.
5. Production from both leases will be metered separately (according to the "Manual for the Installation and Operation of Commingling Facilities") due to the diversity in royalty interest.

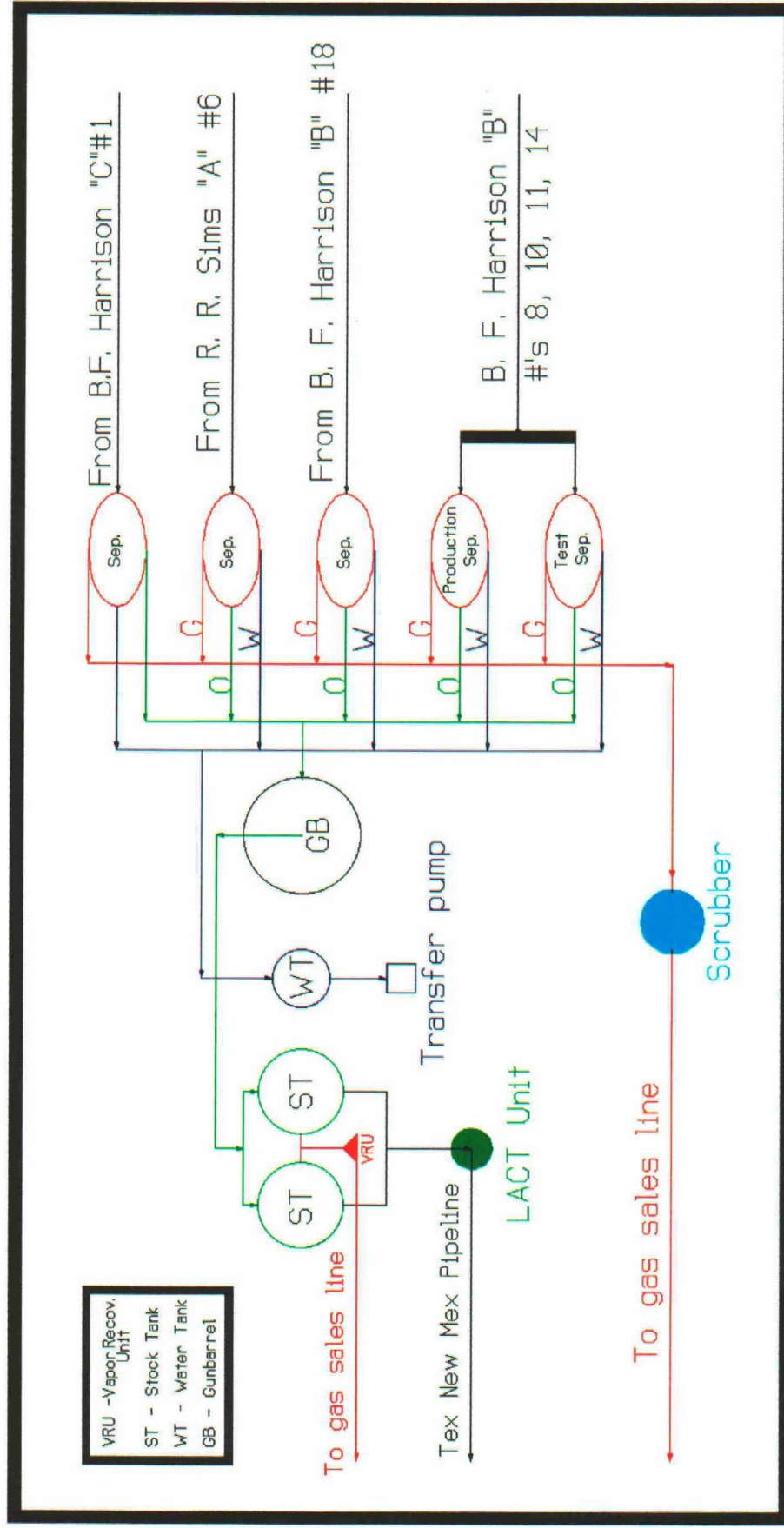


Area Map of B. F. Harrison "B" and B. F. Harrison "C" leases



Township 23S, Range 37E

Figure 4. Overhead view of lease commingling facilities



DISTRICT I

P.O. Box 1980, Hobbs, NM 88241-1980

DISTRICT II

P.O. Box Drawer DD, Artesia, NM 88211-0719

DISTRICT III

1000 Rio Brazos Rd., Aztec, NM 87410

DISTRICT IV

P.O. Box 2088, Santa Fe, NM 87504-2088

State of New Mexico

Energy, Minerals and Natural Resources Department

Form C-102

Revised February 10, 1994

Instructions on back

Submit to Appropriate District Office

State Lease - 4 Copies

Fee Lease - 3 Copies

☐ AMENDED REPORT

OIL CONSERVATION DIVISION

P.O. Box 2088

Santa Fe, New Mexico 87504-2088

WELL LOCATION AND ACREAGE DEDICATION PLAT

¹ API Number 30 025 31956	² Pool Code 58595	³ Pool Name Southwest Teague-Glorieta Upper Paddock
⁴ Property Code 10961	⁵ Property Name HARRISON, B. F. -C-	⁶ Well No. 1
⁷ OGRID Number 022351	⁸ Operator Name TEXACO EXPLORATION & PRODUCTION INC.	⁹ Elevation GR-3320', KB-3332'

¹⁰ Surface Location

Ul or lot no.	Section	Township	Range	Lot.Idn	Feet From The	North/South Line	Feet From The	East/West Line	County
L	9	23-S	37-E		1840	SOUT	670	WEST	LEA

¹¹ Bottom Hole Location If Different From Surface

Ul or lot no.	Section	Township	Range	Lot.Idn	Feet From The	North/South Line	Feet From The	East/West Line	County

¹² Dedicated Acres 40	¹³ Joint or Infill No	¹⁴ Consolidation Code	¹⁵ Order No.
-------------------------------------	-------------------------------------	----------------------------------	-------------------------

NO ALLOWABLE WILL BE ASSIGNED TO THIS COMPLETION UNTIL ALL INTERESTS HAVE BEEN CONSOLIDATED
OR A NON-STANDARD UNIT HAS BEEN APPROVED BY THE DIVISION

<div data-bbox="73 1000 105 1032">16</div>	<div data-bbox="1071 957 1445 989">¹⁷ OPERATOR CERTIFICATION</div> <div data-bbox="1071 1000 1445 1085">I hereby certify that the information contained herein is true and complete to the best of my knowledge and belief</div> <div data-bbox="1071 1095 1510 1298"> <div data-bbox="1071 1170 1169 1202">Signature</div> <div data-bbox="1071 1234 1201 1266">Printed Name</div> <div data-bbox="1071 1266 1299 1308">Darrell J. Carriger</div> </div> <div data-bbox="1071 1308 1347 1372"> <div data-bbox="1071 1308 1153 1340">Position</div> <div data-bbox="1071 1340 1347 1372">Engineering Assistant</div> </div> <div data-bbox="1071 1383 1153 1415">Date</div> <div data-bbox="1071 1415 1153 1447">9/25/95</div> <div data-bbox="1071 1457 1445 1489">¹⁸ SURVEYOR CERTIFICATION</div> <div data-bbox="1071 1489 1445 1670">I hereby certify that the well location shown on this plat was plotted from field notes of actual surveys made by me or under my supervision, and that the same is true and correct to the best of my knowledge and belief.</div> <div data-bbox="1071 1670 1201 1702">Date Surveyed</div> <div data-bbox="1071 1734 1266 1798"> <div data-bbox="1071 1734 1234 1766">Signature & Seal of</div> <div data-bbox="1071 1766 1266 1798">Professional Surveyor</div> </div> <div data-bbox="1071 1904 1201 1936">Certificate No.</div>
--	---

DISTRICT I
P.O. Box 1980, Hobbs, NM 88241-1980
DISTRICT II
P.O. Box Drawer DD, Artesia, NM 88211-0719
DISTRICT III
1000 Rio Brazos Rd., Aztec, NM 87410
DISTRICT IV
P.O. Box 2088, Santa Fe, NM 87504-2088

State of New Mexico
Energy, Minerals and Natural Resources Department

OIL CONSERVATION DIVISION

P.O. Box 2088
Santa Fe, New Mexico 87504-2088

Form C-102
Revised February 10, 1994
Instructions on back
Submit to Appropriate District Office
State Lease - 4 Copies
Fee Lease - 3 Copies
☐ AMENDED REPORT

WELL LOCATION AND ACREAGE DEDICATION PLAT

¹ API Number 30 025 32159	² Pool Code 58575	³ Pool Name NORTH TEAGUE SAN ANDRES
⁴ Property Code 10960	⁵ Property Name HARRISON, B. F. - B -	⁶ Well No. 18
⁷ OGRID Number 022351	⁸ Operator Name TEXACO EXPLORATION & PRODUCTION INC.	⁹ Elevation GR-3319', KB-3331'

¹⁰ Surface Location

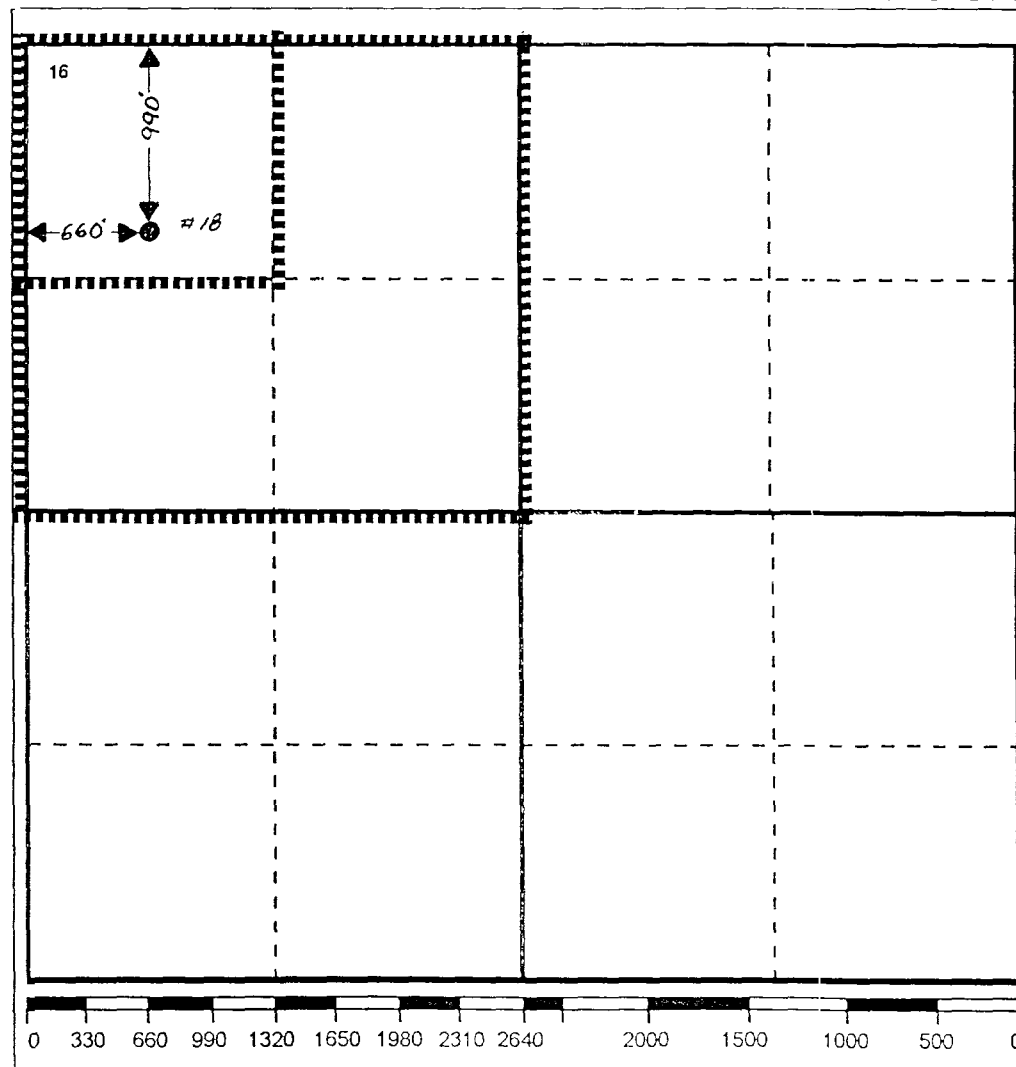
UI or lot no. D	Section 9	Township 23-SO	Range 37-EA	Lot.Idn	Feet From The 990	North/South Line NORTH	Feet From The 660	East/West Line WEST	County LEA
--------------------	--------------	-------------------	----------------	---------	----------------------	---------------------------	----------------------	------------------------	---------------

¹¹ Bottom Hole Location If Different From Surface

UI or lot no.	Section	Township	Range	Lot.Idn	Feet From The	North/South Line	Feet From The	East/West Line	County
---------------	---------	----------	-------	---------	---------------	------------------	---------------	----------------	--------

¹² Dedicated Acres 40	¹³ Joint or Infill No	¹⁴ Consolidation Code	¹⁵ Orcer No.
-------------------------------------	-------------------------------------	----------------------------------	-------------------------

NO ALLOWABLE WILL BE ASSIGNED TO THIS COMPLETION UNTIL ALL INTERESTS HAVE BEEN CONSOLIDATED
OR A NON-STANDARD UNIT HAS BEEN APPROVED BY THE DIVISION



17 OPERATOR CERTIFICATION I hereby certify that the information contained herein is true and complete to the best of my knowledge and belief Signature <i>[Signature]</i> Printed Name Darrell J. Carriger Position Engineering Assistant Date 6/29/95
18 SURVEYOR CERTIFICATION I hereby certify that the well location shown on this plat was plotted from field notes of actual surveys made by me or under my supervision, and that the same is true and correct to the best of my knowledge and belief. Date Surveyed Signature & Seal of Professional Surveyor Certificate No.

DISTRICT I
P.O. Box 1990, Hobbs, NM 88241-1990
DISTRICT II
P.O. Box Drawer DD, Artesia, NM 88211-0719
DISTRICT III
1000 Rio Brazos Rd., Aztec, NM 87410
DISTRICT IV
P.O. Box 2088, Santa Fe, NM 87504-2088

State of New Mexico
Energy, Minerals and Natural Resources Department
OIL CONSERVATION DIVISION
P.O. Box 2088
Santa Fe, New Mexico 87504-2088

Form C-102
Revised February 10, 1994
Instructions on back
Submit to Appropriate District Office
State Lease - 4 Copies
Fee Lease - 3 Copies
☐ AMENDED REPORT

WELL LOCATION AND ACREAGE DEDICATION PLAT

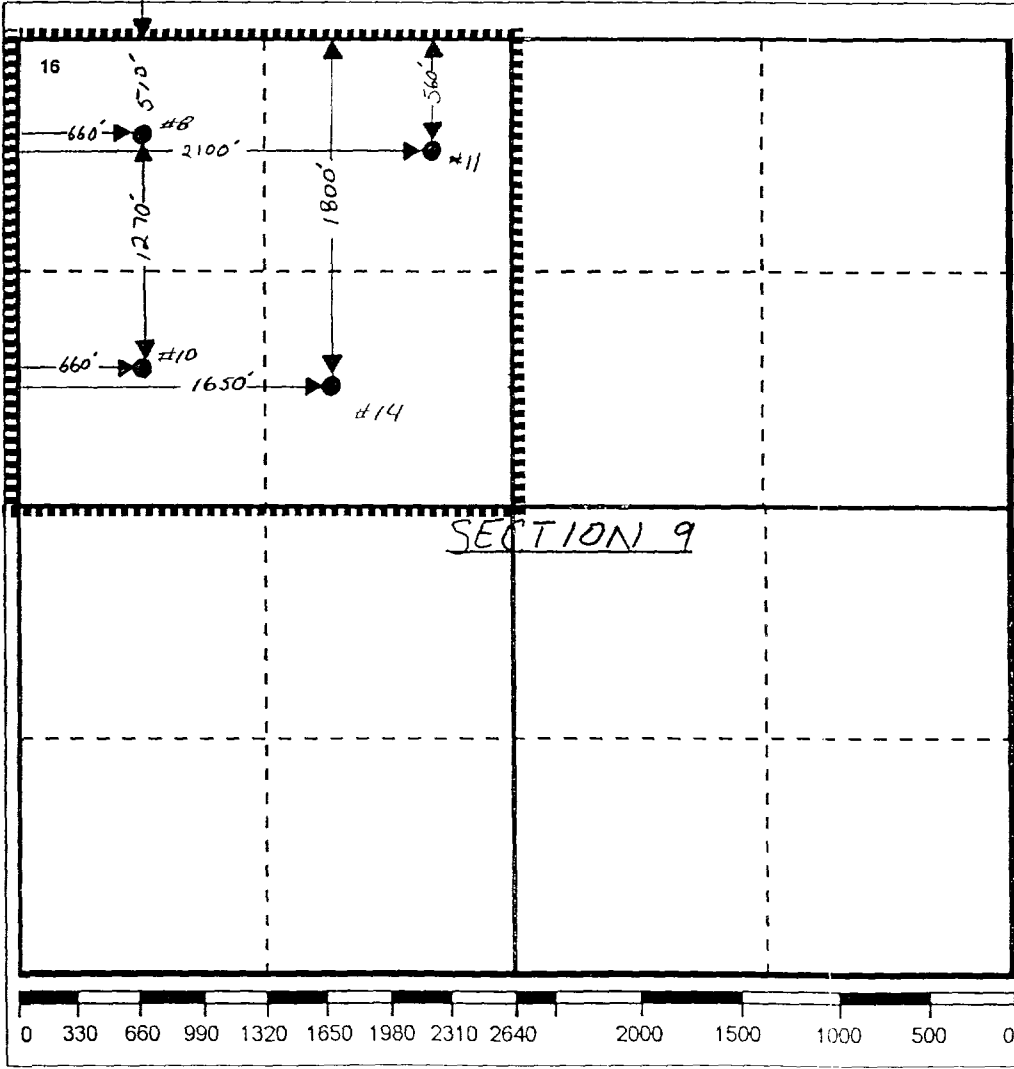
¹ API Number 30 025 32173		² Pool Code 58595		³ Pool Name Southwest Teague-Glorieta Upper Paddock	
⁴ Property Code 10960		⁵ Property Name HARRISON, BF B			⁶ Well No. 14
⁷ OGRID Number 022351		⁸ Operator Name TEXACO EXPLORATION & PRODUCTION INC.			⁹ Elevation GR-3314', KB-3328'

¹⁰ Surface Location									
UI or lot no. F	Section 9	Township 23S	Range 37E	Lot.Idn	Feet From The 1800	North/South Line N	Feet From The 1650	East/West Line W	County LEA

¹¹ Bottom Hole Location If Different From Surface									
UI or lot no.	Section	Township	Range	Lot.Idn	Feet From The	North/South Line	Feet From The	East/West Line	County

¹² Dedicated Acres 40	¹³ Joint or Infill No	¹⁴ Consolidation Code	¹⁵ Order No.
-------------------------------------	-------------------------------------	----------------------------------	-------------------------

NO ALLOWABLE WILL BE ASSIGNED TO THIS COMPLETION UNTIL ALL INTERESTS HAVE BEEN CONSOLIDATED
OR A NON-STANDARD UNIT HAS BEEN APPROVED BY THE DIVISION



17 OPERATOR CERTIFICATION I hereby certify that the information contained herein is true and complete to the best of my knowledge and belief Signature <i>[Signature]</i> Printed Name Darrell J. Carriger Position Engineering Assistant Date 6/29/95
18 SURVEYOR CERTIFICATION I hereby certify that the well location shown on this plat was plotted from field notes of actual surveys made by me or under my supervision, and that the same is true and correct to the best of my knowledge and belief. Date Surveyed Signature & Seal of Professional Surveyor Certificate No.

DISTRICT I
P.O. Box 1980, Hobbs, NM 88241-1980
DISTRICT II
P.O. Box Drawer DD, Artesia, NM 88211-0719
DISTRICT III
1000 Rio Brazos Rd., Aztec, NM 87410
DISTRICT IV
P.O. Box 2088, Santa Fe, NM 87504-2088

State of New Mexico
Energy, Minerals and Natural Resources Department

Form C-102
Revised February 10, 1994
Instructions on back
Submit to Appropriate District Office
State Lease - 4 Copies
Fee Lease - 3 Copies
☐ AMENDED REPORT

OIL CONSERVATION DIVISION

P.O. Box 2088
Santa Fe, New Mexico 87504-2088

WELL LOCATION AND ACREAGE DEDICATION PLAT

¹ API Number 30 025 32107	² Pool Code 58575	³ Pool Name Southwest Teague-Glorieta Upper Paddock
⁴ Property Code 10960	⁵ Property Name HARRISON, B. F. - B -	⁶ Well No. 11
⁷ OGRID Number 022351	⁸ Operator Name TEXACO EXPLORATION & PRODUCTION INC.	⁹ Elevation GR-3312', KB-3326'

¹⁰ Surface Location

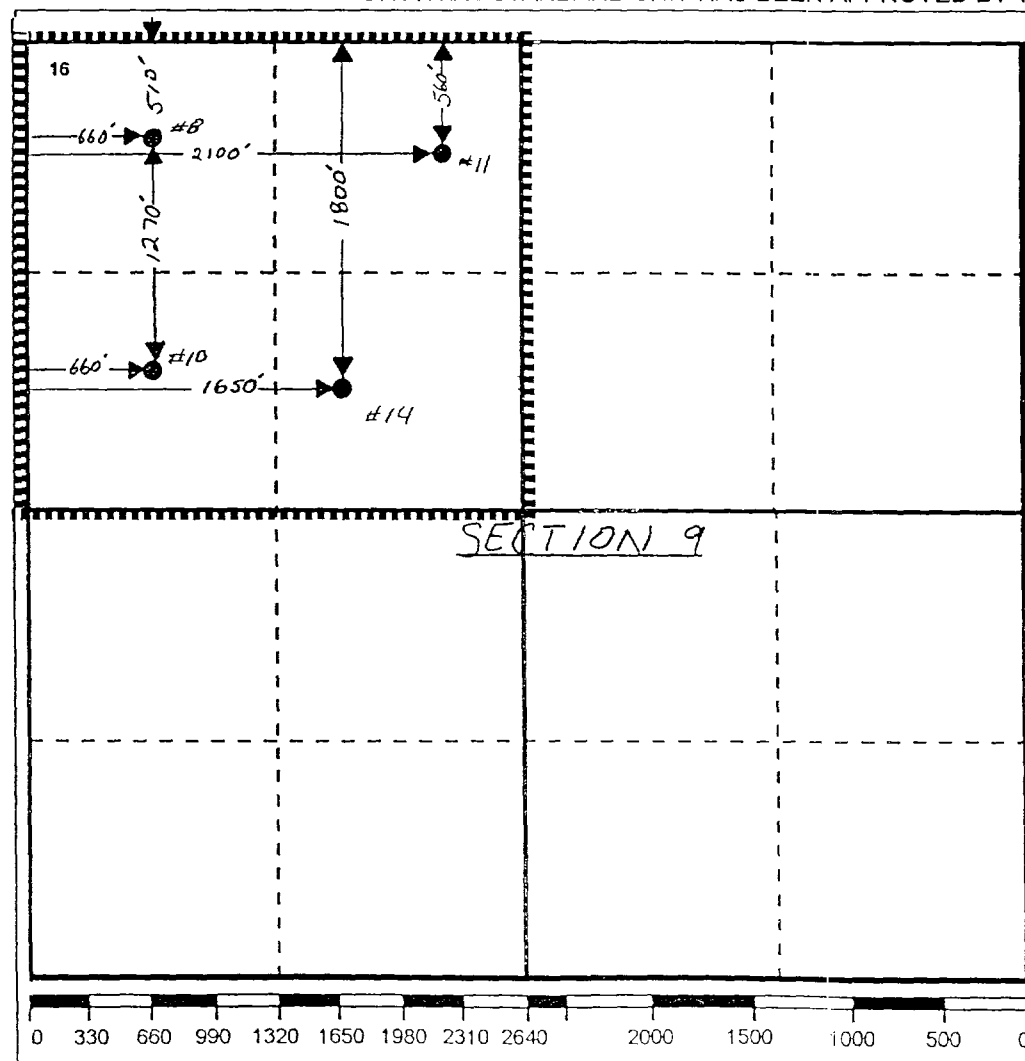
UI or lot no.	Section	Township	Range	Lot.Idn	Feet From The	North/South Line	Feet From The	East/West Line	County
C	9	23-S	37-E		560	N	2100	W	LEA

¹¹ Bottom Hole Location If Different From Surface

UI or lot no.	Section	Township	Range	Lot.Idn	Feet From The	North/South Line	Feet From The	East/West Line	County

¹² Dedicated Acres 40	¹³ Joint or Infill No	¹⁴ Consolidation Code	¹⁵ Order No.
-------------------------------------	-------------------------------------	----------------------------------	-------------------------

NO ALLOWABLE WILL BE ASSIGNED TO THIS COMPLETION UNTIL ALL INTERESTS HAVE BEEN CONSOLIDATED
OR A NON-STANDARD UNIT HAS BEEN APPROVED BY THE DIVISION



17 OPERATOR CERTIFICATION I hereby certify that the information contained herein is true and complete to the best of my knowledge and belief. Signature: <i>[Signature]</i> Printed Name: Darrell J. Carriger Position: Engineering Assistant Date: 6/29/95
18 SURVEYOR CERTIFICATION I hereby certify that the well location shown on this plat was plotted from field notes of actual surveys made by me or under my supervision, and that the same is true and correct to the best of my knowledge and belief. Date Surveyed: Signature & Seal of Professional Surveyor: Certificate No.:

DISTRICT I
P.O. Box 1980, Hobbs, NM 88241-1980
DISTRICT II
P.O. Box Drawer DD, Artesia, NM 88211-0719
DISTRICT III
1000 Rio Brazos Rd., Aztec, NM 87410
DISTRICT IV
P.O. Box 2088, Santa Fe, NM 87504-2088

State of New Mexico
Energy, Minerals and Natural Resources Department

Form C-102
Revised February 10, 1994
Instructions on back
Submit to Appropriate District Office
State Lease - 4 Copies
Fee Lease - 3 Copies
☐ AMENDED REPORT

OIL CONSERVATION DIVISION

P.O. Box 2088
Santa Fe, New Mexico 87504-2088

WELL LOCATION AND ACREAGE DEDICATION PLAT

¹ API Number 3002532106	² Pool Code 58595	³ Pool Name Southwest Teague-Glorieta Upper Paddock
⁴ Property Code 10960	⁵ Property Name HARRISON, B. F. - B -	⁶ Well No. 10
⁷ OGRID Number 022351	⁸ Operator Name TEXACO EXPLORATION & PRODUCTION INC.	⁹ Elevation GR-3317', KB-3330'

¹⁰ Surface Location

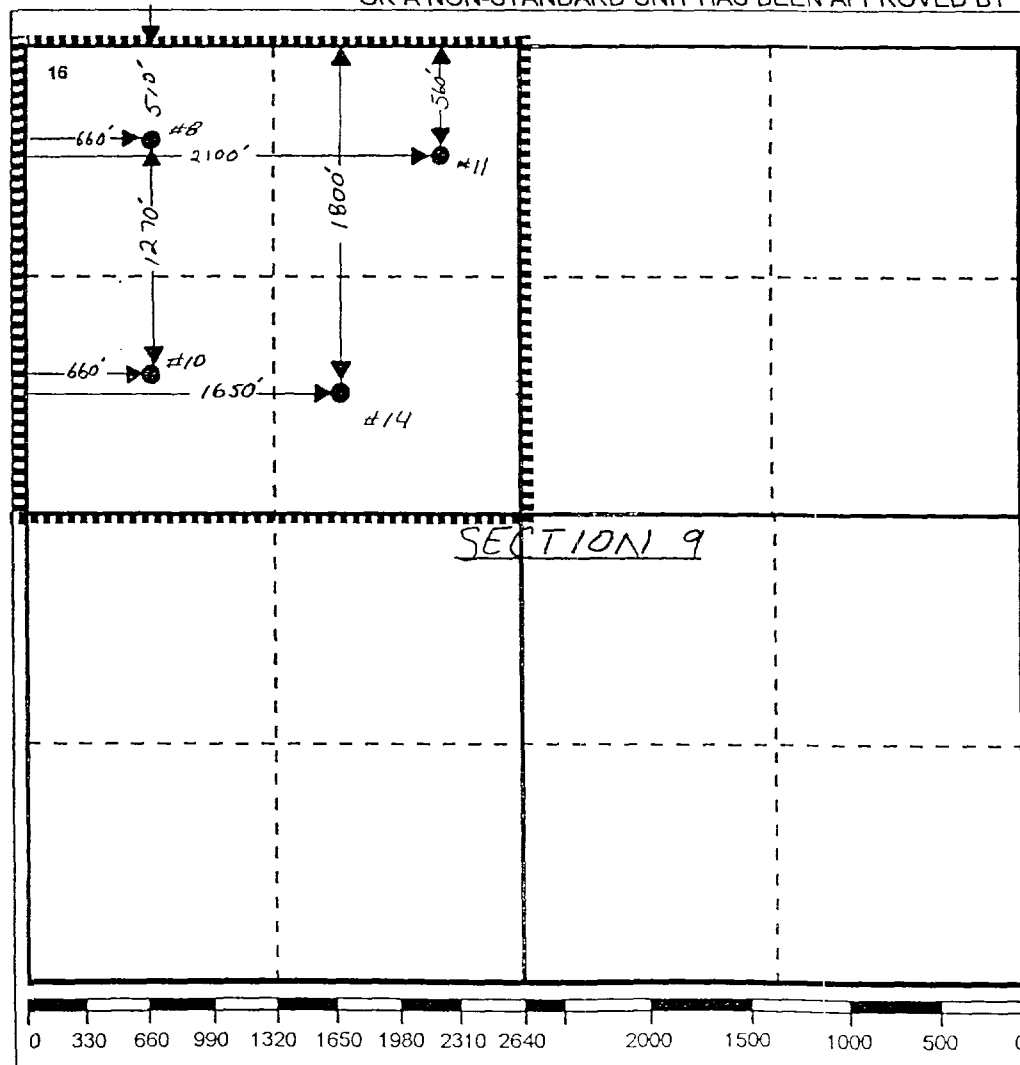
UI or lot no.	Section	Township	Range	Lot.Idn	Feet From The	North/South Line	Feet From The	East/West Line	County
E	9	23-S	37-E		1780	N	660	WEST	LEA

¹¹ Bottom Hole Location If Different From Surface

UI or lot no.	Section	Township	Range	Lot.Idn	Feet From The	North/South Line	Feet From The	East/West Line	County

¹² Dedicated Acres 40	¹³ Joint or Infill No	¹⁴ Consolidation Code	¹⁵ Order No.
-------------------------------------	-------------------------------------	----------------------------------	-------------------------

NO ALLOWABLE WILL BE ASSIGNED TO THIS COMPLETION UNTIL ALL INTERESTS HAVE BEEN CONSOLIDATED
OR A NON-STANDARD UNIT HAS BEEN APPROVED BY THE DIVISION



¹⁷ OPERATOR CERTIFICATION I hereby certify that the information contained herein is true and complete to the best of my knowledge and belief Signature Printed Name Darrell J. Carriger Position Engineering Assistant Date 6/29/95
¹⁸ SURVEYOR CERTIFICATION I hereby certify that the well location shown on this plat was plotted from field notes of actual surveys made by me or under my supervision, and that the same is true and correct to the best of my knowledge and belief. Date Surveyed Signature & Seal of Professional Surveyor Certificate No.

DISTRICT I
P.O. Box 1980, Hobbs, NM 88241-1980
DISTRICT II
P.O. Box Drawer DD, Artesia, NM 88211-0719
DISTRICT III
1000 Rio Brazos Rd., Aztec, NM 87410
DISTRICT IV
P.O. Box 2088, Santa Fe, NM 87504-2088

State of New Mexico
Energy, Minerals and Natural Resources Department

OIL CONSERVATION DIVISION

P.O. Box 2088
Santa Fe, New Mexico 87504-2088

Form C-102
Revised February 10, 1994
Instructions on back
Submit to Appropriate District Office
State Lease - 4 Copies
Fee Lease - 3 Copies
☐ AMENDED REPORT

WELL LOCATION AND ACREAGE DEDICATION PLAT

¹ API Number 3002531955	² Pool Code 58545	³ Pool Name Southwest Teague-Glorieta Upper Paddock
⁴ Property Code 10960	⁵ Property Name HARRISON, B. F. - B -	⁶ Well No. 8
⁷ OGRID Number 022351	⁸ Operator Name TEXACO EXPLORATION & PRODUCTION INC.	⁹ Elevation GR-3317', KB-3329'

¹⁰ Surface Location

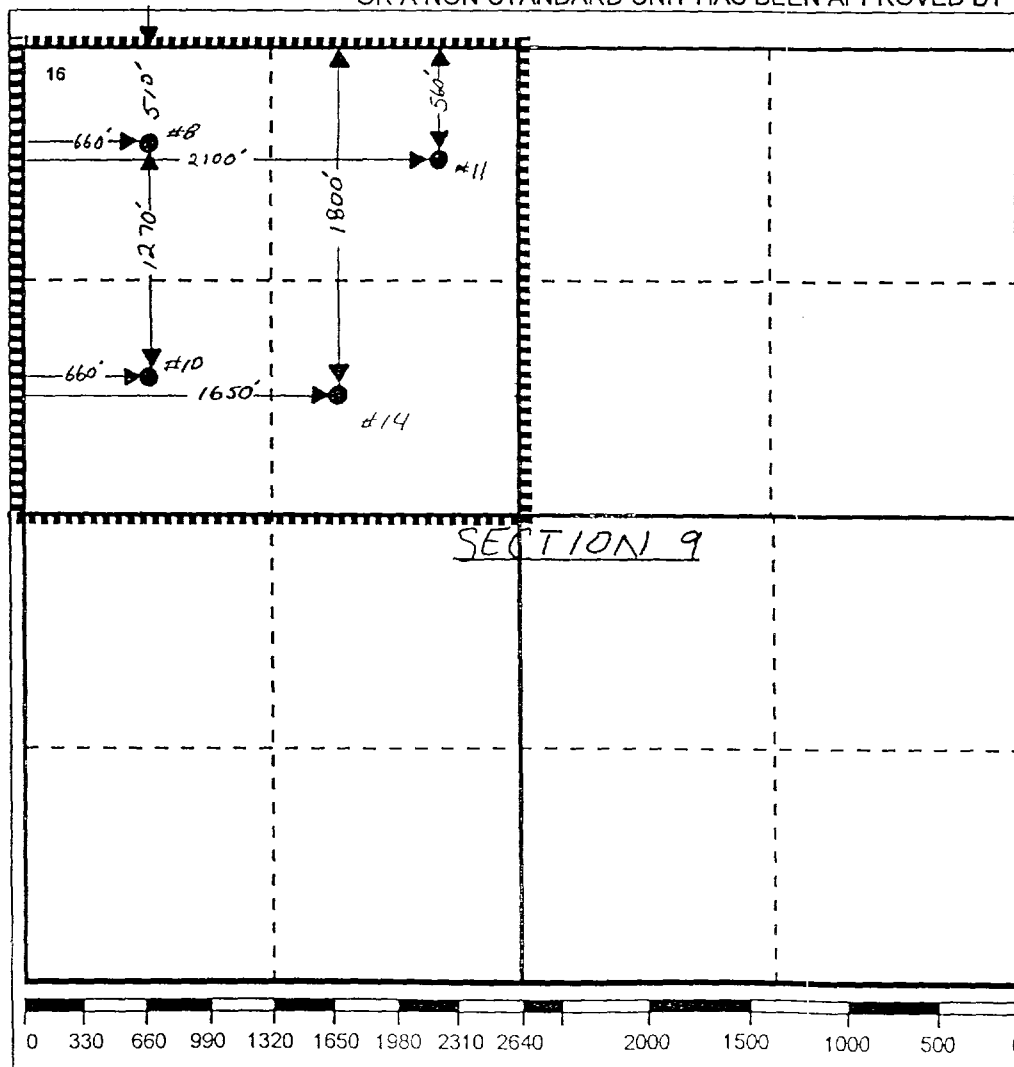
UI or lot no.	Section	Township	Range	Lot.Idn	Feet From The	North/South Line	Feet From The	East/West Line	County
D	9	23-SO	37-EA		510	NORTH	660	WEST	LEA

¹¹ Bottom Hole Location If Different From Surface

UI or lot no.	Section	Township	Range	Lot.Idn	Feet From The	North/South Line	Feet From The	East/West Line	County

¹² Dedicated Acres 40	¹³ Joint or Infill No	¹⁴ Consolidation Code	¹⁵ Order No.
-------------------------------------	-------------------------------------	----------------------------------	-------------------------

NO ALLOWABLE WILL BE ASSIGNED TO THIS COMPLETION UNTIL ALL INTERESTS HAVE BEEN CONSOLIDATED
OR A NON-STANDARD UNIT HAS BEEN APPROVED BY THE DIVISION



17 OPERATOR CERTIFICATION I hereby certify that the information contained herein is true and complete to the best of my knowledge and belief. Signature <i>[Signature]</i> Printed Name Darrell J. Carriger Position Engineering Assistant Date 6/29/95
18 SURVEYOR CERTIFICATION I hereby certify that the well location shown on this plat was plotted from field notes of actual surveys made by me or under my supervision, and that the same is true and correct to the best of my knowledge and belief. Date Surveyed Signature & Seal of Professional Surveyor Certificate No.

DISTRICT I
P. O. Box 1980, Hobbs, NM 88240

DISTRICT II
P. O. Drawer DO, Artesia, NM 88210

DISTRICT III
1000 Rio Brazos Rd., Aztec, NM 87410

DISTRICT IV
P. O. Box 2088, Santa Fe, NM 87504-2088

State of New Mexico
Energy, Minerals and Natural Resources Department

OIL CONSERVATION DIVISION

PO Box 2088
Santa Fe, NM 87504-2088

Form C-102
Revised February 10, 1994

Instructions on back

Submit to Appropriate District Office

State Lease-4 copies
Fee Lease-3 copies

☐ AMENDED REPORT

WELL LOCATION AND ACREAGE DEDICATION PLAT

1 API Number 30-025-32943		2 Pool Code 58595		3 Pool Name Teague Glorieta-Upper Paddock,					
Property Code 10960		Property Name B. F. Harrison "B"		Well Number 26					
4 GRID No. 22351		Operator Name TEXACO EXPLORATION & PRODUCTION, INC.		5 Elevation 3328'					
10 Surface Location									
UL or lot no. P	Section 5	Township 23-S	Range 37-E	Lot Idn 700'	North/South line South	Feet from the 500'	East/West line East	County Lea	
11 Bottom Hole Location If Different From Surface									
UL or lot no.	Section	Township	Range	Lot Idn	Feet from the	North/South line	Feet from the	East/West line	County
12 Dedicated Acres 40		13 Joint or Infill		14 Consolidation Code		15 Order No.			

NO ALLOWABLE WILL BE ASSIGNED TO THIS COMPLETION UNTIL ALL INTERESTS HAVE BEEN CONSOLIDATED
OR A NON-STANDARD UNIT HAS BEEN APPROVED BY THE DIVISION.

	16 OPERATOR CERTIFICATION I hereby certify that the information contained herein is true and complete to the best of my knowledge and belief.	
	Signature <i>C. Wade Howard</i>	
	Printed Name C. Wade Howard	
	Position Engineer's Assistant	
	Company Texaco Expl. & Prod. Inc.	
Date May 2, 1995		
	17 SURVEYOR CERTIFICATION I hereby certify that the well location shown on this plat was plotted from field notes of actual surveys made by me or under my supervision, and that the same is true and correct to the best of my knowledge and belief.	
	Date Surveyed May 1, 1995	
	Signature & Seal of Professional Surveyor <i>John S. Piper</i>	
	Certificate No. 7254 John S. Piper	
	Sheet -	

○ = Staked Location ● = Producing Well = Injection Well ✕ = Water Supply Well * = Plugged & Abandon Well

DISTRICT I
P.O. Box 1980, Hobbs, NM 88241-1980
DISTRICT II
P.O. Box Drawer DD, Artesia, NM 88211-0719
DISTRICT III
1000 Rio Brazos Rd., Aztec, NM 87410
DISTRICT IV
P.O. Box 2088, Santa Fe, NM 87504-2088

State of New Mexico
Energy, Minerals and Natural Resources Department

OIL CONSERVATION DIVISION

P.O. Box 2088
Santa Fe, New Mexico 87504-2088

Form C-102
Revised February 10, 1994
Instructions on back
Submit to Appropriate District Office
State Lease - 4 Copies
Fee Lease - 3 Copies
☐ AMENDED REPORT

WELL LOCATION AND ACREAGE DEDICATION PLAT

¹ API Number 30 025 32944	² Pool Code 58555	³ Pool Name Southwest Teague-Glorieta Upper Paddock
⁴ Property Code 11060	⁵ Property Name SIMS, R. R. 'A'	⁶ Well No. 6
⁷ OGRID Number 022351	⁸ Operator Name TEXACO EXPLORATION & PRODUCTION INC.	⁹ Elevation 3324'

¹⁰ Surface Location

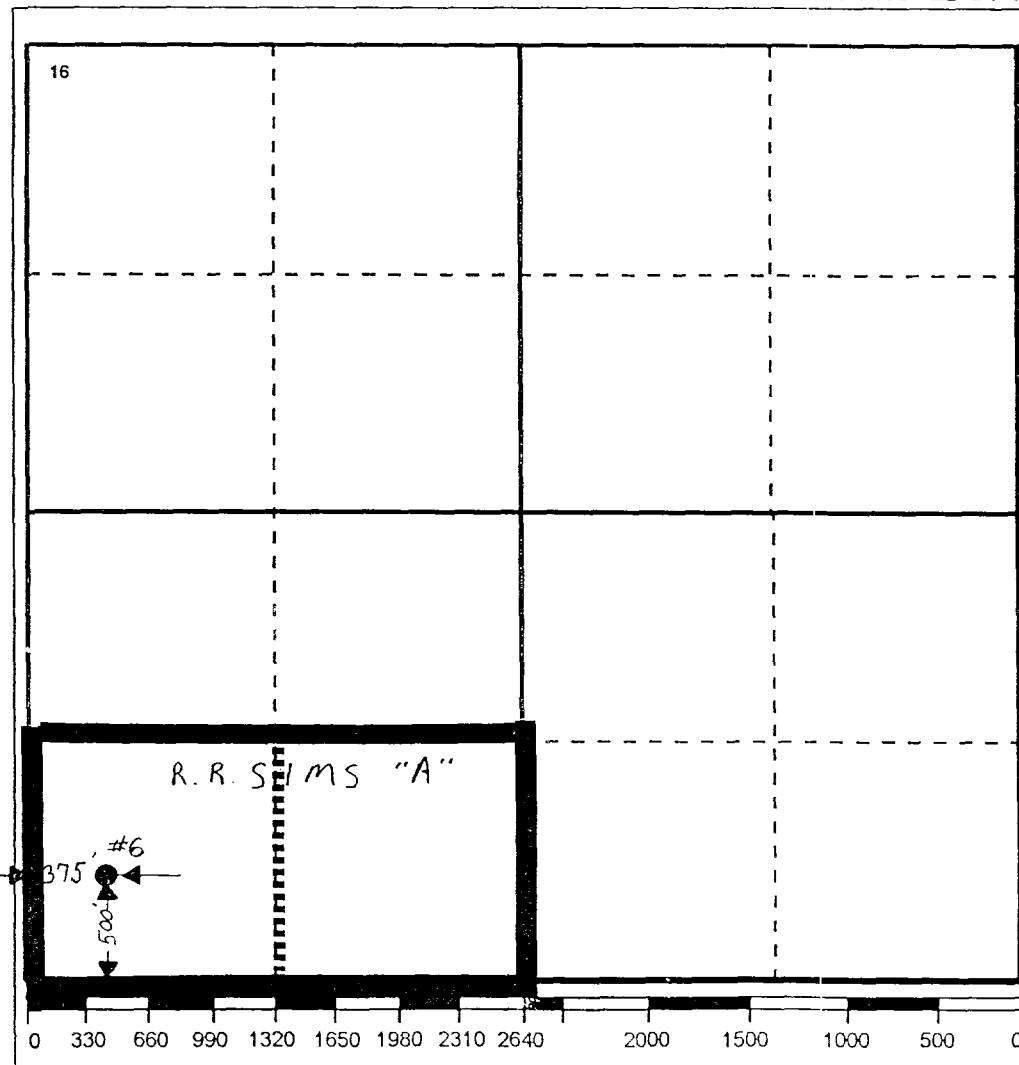
Ul or lot no. M	Section 4	Township 23-S	Range 37-E	Lot.Idn	Feet From The 500	North/South Line SOUTH	Feet From The 375	East/West Line WEST	County LEA
--------------------	--------------	------------------	---------------	---------	----------------------	---------------------------	----------------------	------------------------	---------------

¹¹ Bottom Hole Location If Different From Surface

Ul or lot no.	Section	Township	Range	Lot.Idn	Feet From The	North/South Line	Feet From The	East/West Line	County
---------------	---------	----------	-------	---------	---------------	------------------	---------------	----------------	--------

¹² Dedicated Acres 40	¹³ Joint or Infill No	¹⁴ Consolidation Code	¹⁵ Order No.
-------------------------------------	-------------------------------------	----------------------------------	-------------------------

NO ALLOWABLE WILL BE ASSIGNED TO THIS COMPLETION UNTIL ALL INTERESTS HAVE BEEN CONSOLIDATED
OR A NON-STANDARD UNIT HAS BEEN APPROVED BY THE DIVISION



17 OPERATOR CERTIFICATION

I hereby certify that the information
contained herein is true and complete to the
best of my knowledge and belief

Signature

Printed Name

Darrell J. Carriger

Position

Engineering Assistant

Date

6/29/95

18 SURVEYOR CERTIFICATION

I hereby certify that the well location shown
on this plat was plotted from field notes of
actual surveys made by me or under my
supervision, and that the same is true and
correct to the best of my knowledge and
belief.

Date Surveyed

Signature & Seal of
Professional Surveyor

Certificate No.



BRUCE KING
GOVERNOR

ANITA LOCKWOOD
CABINET SECRETARY

STATE OF NEW MEXICO

ENERGY, MINERALS AND NATURAL RESOURCES DEPARTMENT

OIL CONSERVATION DIVISION

RSP	1-31	JUA	
MCA		JAN	
DAB		MAY	
DAD	2/3	DEC	
DOD		JUN	
RBD		JUL	
MCD		AUG	
KJH		SEP	
LWT		OCT	
WTL		NOV	
DLM		DEC	
RTM			
LDR			
SGW			
CES			
JAP			

POST OFFICE BOX 2088
STATE LAND OFFICE BUILDING
SANTA FE, NEW MEXICO 87504
(505) 827-5800

CC

COMMINGLING ORDER PC-883

LEASE FILE _____
WELL FILE _____
CORP FILE _____

copy 2-1-94 mlg



Texaco Exploration and Production, Inc.
P.O. Box 730
Hobbs, NM 88241-0730

Attention: T.L. Frazier

LEASE NAME: B.F. Harrison "B" Lease
DESCRIPTION: NW/4 of Section 9, Township 23 South, Range 37 East, NMPM, Lea County, New Mexico.

The above-named company is hereby authorized to commingle Southwest Teague-Glorieta Upper Paddock and Undesignated San Andres Pool production in a common tank battery and to determine the production from each pool by separately metering the production from each pool prior to commingling.

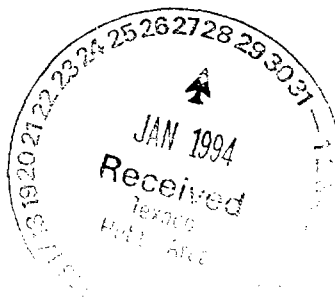
FURTHER: The operator shall notify the Hobbs District Office of the Division upon implementation of the commingling process.

NOTE: This installation shall be installed and operated in accordance with the applicable provisions of Rule 303 of the Division Rules and Regulations and the Division "Manual for the Installation and Operation of Commingling Facilities." It is the responsibility of the producer to notify the transporter of this commingling authority.

DONE at Santa Fe, New Mexico, on this 26th day of January, 1994.

WILLIAM J. LEMAY,
Director

cc: Oil Conservation Division- Hobbs



**Mineral Interest Owners
B. F. Harrison "C" Lease**

Daniel L. Gutman
239 E. 79 St.
New York, NY 10021

Alfred E. Gutman Corp.
C/O Dr. Joshua Gutman
15 Upton Ave.
Providence, RI 02906

Betty Gutttag
16 Sutton Place
New York, NY 22815

Edith and Daniel Socolo TRS.
2767 BriarLake Woods WY
Atlanta, GA 30345

Charles Gutman 1956 Trst.
Manufacturers Hanover Trst.
CO SUC TR; TRST Real Estate
270 Park Ave, 20th Floor
New York, NY 10017

Charles Gutman
C/O Carlton House
680 Madison Ave.
APT #612
New York, NY 10021

Geodyne Nominee Corp.
Two W. Second St.
Tulsa, OK 74194

Oxy USA Inc.
PO Box 845541
Dallas, TX 75284

Ethel Shufro
4800 S.Chicago Beach Dr
Chicago, IL 60615

Joseph D. Hoffman
2428 W. Coyle
Chicago, IL 60645

Michael Alan Huntington
433 South 7th St.
PO Box 1051
Jal, NM 88252

Eleanor H. Baker
3738 E. High Ln.
Seattle, WA 98112

Emanuel Hoffman
C/O Louise S. Hoffman
Attorney In Fact
174 south St.
Williamstown, MA 01267

Edith G. Socolow
2767 Briarlake Woods Way
Atlanta, GA 30345

John P. Stone
303 North Oak
Stanton, TX 79782

Nancee Gay Stephens
312 Northwood DR.
McKinney, TX 75070

Benny Lynn Stone
PO Box 667
Stanton, TX 79782

Verna Jean Jenkins
PO Box 237
Socorro, NM 87801

Miriam G. Star
4644 Miron Dr.
Dallas, TX 75220

Michael Alan Huntington
433 South 7th St.
PO Box 1051
Jal, NM 88252

Jerry Ann Wynn
RT 1 Box 364
Broadway, VA 22815

Cynthia Mart Spillar
25918 Lake Lawn Dr.
Spring, TX 77380

Linda Kay Winter
3414 Ann Arbor
Houston, TX 77063

**Mineral Interest Owners
B. F. Harrison "B" Lease**

Amerada Hess Corp.
PO Box 201544
Houston, Texas 77216

Michael Alan Huntington
433 South 7th St.
PO Box 1051
Jal, NM 88252

Jerry Ann Wynn
RT 1 Box 364
Broadway, VA 22815

Cynthia Mart Spillar
25918 Lake Lawn Dr.
Spring, TX 77380

Linda Kay Winter
3414 Ann Arbor
Houston, TX 77063

John P. Stone
303 North Oak
Stanton, TX 79782

Nancee Gay Stephens
312 Northwood DR.
McKinney, TX 75070

Benny Lynn Stone
PO Box 667
Stanton, TX 79782

Verna Jean Jenkins
PO Box 237
Socorro, NM 87801

US Postal Service
Receipt for Certified Mail
No Insurance Coverage Provided.
Do not use for International Mail (See reverse)

Sent to
Tha Jean Jinkins
237
CORRO, NM 87801
Post Office, State, & ZIP Code

Postage	\$
Certified Fee	
Special Delivery Fee	
Restricted Delivery Fee	
Return Receipt Showing to Whom & Date Delivered	
Return Receipt Showing to Whom, Date, & Addressee's Address	
TOTAL Postage & Fees	\$
Postmark or Date	

US Postal Service
Receipt for Certified Mail
No Insurance Coverage Provided.
Do not use for International Mail (See reverse)

Sent to
Daniel L. Gutman
289
New York, NY 10021
Post Office, State, & ZIP Code

Postage	\$
Certified Fee	
Special Delivery Fee	
Restricted Delivery Fee	
Return Receipt Showing to Whom & Date Delivered	
Return Receipt Showing to Whom, Date, & Addressee's Address	
TOTAL Postage & Fees	\$
Postmark or Date	

US Postal Service
Receipt for Certified Mail
No Insurance Coverage Provided.
Do not use for International Mail (See reverse)

Sent to
Allred E. Gutman Corp.
15
PROVIDENCE, RI 02906
Post Office, State, & ZIP Code

Postage	\$
Certified Fee	
Special Delivery Fee	
Restricted Delivery Fee	
Return Receipt Showing to Whom & Date Delivered	
Return Receipt Showing to Whom, Date, & Addressee's Address	
TOTAL Postage & Fees	\$
Postmark or Date	

US Postal Service
Receipt for Certified Mail
No Insurance Coverage Provided.
Do not use for International Mail (See reverse)

Sent to
Betty Guttap
3
NEW YORK, NY 22815
Post Office, State, & ZIP Code

Postage	\$
Certified Fee	
Special Delivery Fee	
Restricted Delivery Fee	
Return Receipt Showing to Whom & Date Delivered	
Return Receipt Showing to Whom, Date, & Addressee's Address	
TOTAL Postage & Fees	\$
Postmark or Date	

US Postal Service
Receipt for Certified Mail
No Insurance Coverage Provided.
Do not use for International Mail (See reverse)

Sent to
Edith & Daniel Socol
2767
Atlanta, GA 30345
Post Office, State, & ZIP Code

Postage	\$
Certified Fee	
Special Delivery Fee	
Restricted Delivery Fee	
Return Receipt Showing to Whom & Date Delivered	
Return Receipt Showing to Whom, Date, & Addressee's Address	
TOTAL Postage & Fees	\$
Postmark or Date	

US Postal Service
Receipt for Certified Mail
No Insurance Coverage Provided.
Do not use for International Mail (See reverse)

Sent to
Thia Mart Spillar
2
New York, NY 77380
Post Office, State, & ZIP Code

Postage	\$
Certified Fee	
Special Delivery Fee	
Restricted Delivery Fee	
Return Receipt Showing to Whom & Date Delivered	
Return Receipt Showing to Whom, Date, & Addressee's Address	
TOTAL Postage & Fees	\$
Postmark or Date	

US Postal Service
Receipt for Certified Mail
No Insurance Coverage Provided.
Do not use for International Mail (See reverse)

Sent to
Linda Kay Winter
34
HONOLULU, HI 96806
Post Office, State, & ZIP Code

Postage	\$
Certified Fee	
Special Delivery Fee	
Restricted Delivery Fee	
Return Receipt Showing to Whom & Date Delivered	
Return Receipt Showing to Whom, Date, & Addressee's Address	
TOTAL Postage & Fees	\$
Postmark or Date	

US Postal Service
Receipt for Certified Mail
No Insurance Coverage Provided.
Do not use for International Mail (See reverse)

Sent to
John P. Stone
302
STANTON, TX 79782
Post Office, State, & ZIP Code

Postage	\$
Certified Fee	
Special Delivery Fee	
Restricted Delivery Fee	
Return Receipt Showing to Whom & Date Delivered	
Return Receipt Showing to Whom, Date, & Addressee's Address	
TOTAL Postage & Fees	\$
Postmark or Date	

US Postal Service
Receipt for Certified Mail
No Insurance Coverage Provided.
Do not use for International Mail (See reverse)

Sent to
Nancee Gay Stephens
31
STANTON, TX 75070
Post Office, State, & ZIP Code

Postage	\$
Certified Fee	
Special Delivery Fee	
Restricted Delivery Fee	
Return Receipt Showing to Whom & Date Delivered	
Return Receipt Showing to Whom, Date, & Addressee's Address	
TOTAL Postage & Fees	\$
Postmark or Date	

US Postal Service
Receipt for Certified Mail
No Insurance Coverage Provided.
Do not use for International Mail (See reverse)

Sent to
Benny Lynn Stone
30
STANTON, TX 79782
Post Office, State, & ZIP Code

Postage	\$
Certified Fee	
Special Delivery Fee	
Restricted Delivery Fee	
Return Receipt Showing to Whom & Date Delivered	
Return Receipt Showing to Whom, Date, & Addressee's Address	
TOTAL Postage & Fees	\$
Postmark or Date	

P 622 708 442

US Postal Service

Receipt for Certified Mail

No Insurance Coverage Provided.

Do not use for International Mail (See reverse)

Sent to
Amerada Hess Corp.
PO BOX 201544
Phoenix, AZ 85066-1544

Postage	\$
Certified Fee	
Special Delivery Fee	
Restricted Delivery Fee	
Return Receipt Showing to Whom & Date Delivered	
Return Receipt Showing to Whom, Date, & Addressee's Address	
TOTAL Postage & Fees	\$

PS Form 3800 April 1995

P 622 708 443

US Postal Service

Receipt for Certified Mail

No Insurance Coverage Provided.

Do not use for International Mail (See reverse)

Sent to
Michael Alan Huntington
433 South 7th St.
PO BOX 1051
Jal, NM 88232

Postage	\$
Certified Fee	
Special Delivery Fee	
Restricted Delivery Fee	
Return Receipt Showing to Whom & Date Delivered	
Return Receipt Showing to Whom, Date, & Addressee's Address	
TOTAL Postage & Fees	\$

PS Form 3800 April 1995

P 622 708 444

US Postal Service

Receipt for Certified Mail

No Insurance Coverage Provided.

Do not use for International Mail (See reverse)

Sent to
Jeffy Ann Wynn
Rt 1 Box 364
Broadway VA 22815
Post Office, State, & ZIP Code

Postage	\$
Certified Fee	
Special Delivery Fee	
Restricted Delivery Fee	
Return Receipt Showing to Whom & Date Delivered	
Return Receipt Showing to Whom, Date, & Addressee's Address	
TOTAL Postage & Fees	\$

PS Form 3800 April 1995