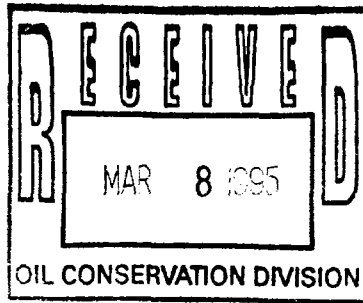




March 2, 1995



PC N/R 905

Southern

Rockies

Business

Unit

Mr. William J. LeMay, Director
New Mexico Oil Conservation Division
2040 S. Pacheco Street
P.O. Box 6429
Santa Fe, NM 87505

Application for Exception to Rule 303-A; Surface Commingling
Archuleta GC A #1 Well; 1510' FSL, 1510' FWL, Section 5-T29N-R9W
Blanco Mesaverde Pool
Archuleta GC A #3 Well; 1450' FSL, 1610' FWL, Section 5-T29N-R9W
Basin Dakota Pool
San Juan County, New Mexico

Amoco Production Company hereby requests administrative approval to surface commingle production from the Archuleta GC A #1 well completed in the Blanco Mesaverde Pool, and the Archuleta GC A #3 well completed in the Basin Dakota Pool. The two wells are located approximately 150 feet apart and could easily share common facilities. Both wells are located on a common lease and the ownership (WI, RI ORRI) of these pools is identical. Surface commingling will offer an economical method of production using a single train of production equipment to produce from both wells. The actual commercial value of the commingled production will not be less than the sum of the values of the production from each of the common sources of supply.

The Archuleta GC A #1 Well (Mesaverde) is currently producing about 90 mcf/d. The Archuleta GC A #3 well (Dakota) has declined to about 60 mcf/d. Based on this we propose to allocate production 60% to the Archuleta GC A #1 (Mesaverde) and 40% to the Archuleta GC A #3 (Dakota). Attached to aid in your review are plats showing the location and acreage dedicated to the wells, historical production and recent testing curves, and a schematic of the proposed commingling installation.

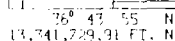
Sincerely,

J. W. Hawkins

cc: Stan Kolodzie

Frank Chavez, Supervisor
NMOCD District III
1000 Rio Brazos Road
Aztec, NM 87410

13,357,723.77 U.S. Dollars



AMOCO PRODUCTION COMPANY
PLAT MAP

ARCHULETA GAS COM A #1A & A #3
SAN JUAN COUNTY NEW MEXICO
SCALE 1 IN. = 1,500 FT. JUL 12, 1994

HORIZONTAL DATUM NAD27

Well Location and Acreage Dedication Plat

Section A.

Date MARCH 8, 1965

Operator PAN AMERICAN PETROLEUM CORPORATION Lease ARCHULETA GAS UNIT A
 Well No. 3 Unit Letter K Section 5 Township 29 NORTH Range 9 WEST NMPM
 Located 1450 Feet From the SOUTH Line, 1610 Feet From the WEST Line
 County SAN JUAN G. L. Elevation REPORT LATER Dedicated Acreage 320.51 Acres
 Name of Producing Formation DAKOTA Pool BASIN DAKOTA

1. Is the Operator the only owner in the dedicated acreage outlined on the plat below?
 Yes X No _____
2. If the answer to question one is "no", have the interests of all the owners been consolidated by communitization agreement or otherwise? Yes _____ No _____. If answer is "yes", Type of Consolidation.
3. If the answer to question two is "no", list all the owners and their respective interests below:

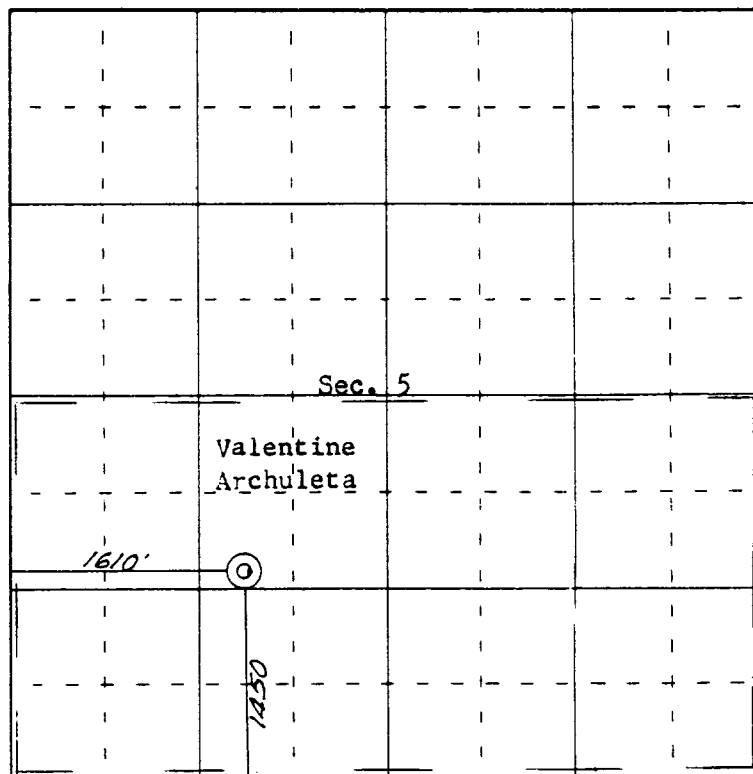
OwnerLand Description

Section B.

Note: All distances must be from outer boundaries of section.

This is to certify that the information
 in Section A above is true and complete
 to the best of my knowledge and belief.

PAN AMERICAN PETROLEUM CORP.
F. H. Hollingsworth (Operator)
F. H. Hollingsworth
 (Representative)
P. O. Box 480
 (Address)
Farmington, New Mexico



0 330 660 990 1320 1650 1980 2310 2640 2000 1500 1000 500 0

Scale 4 inches equal 1 mile

Ref: GLO plat dated 2 July 1952

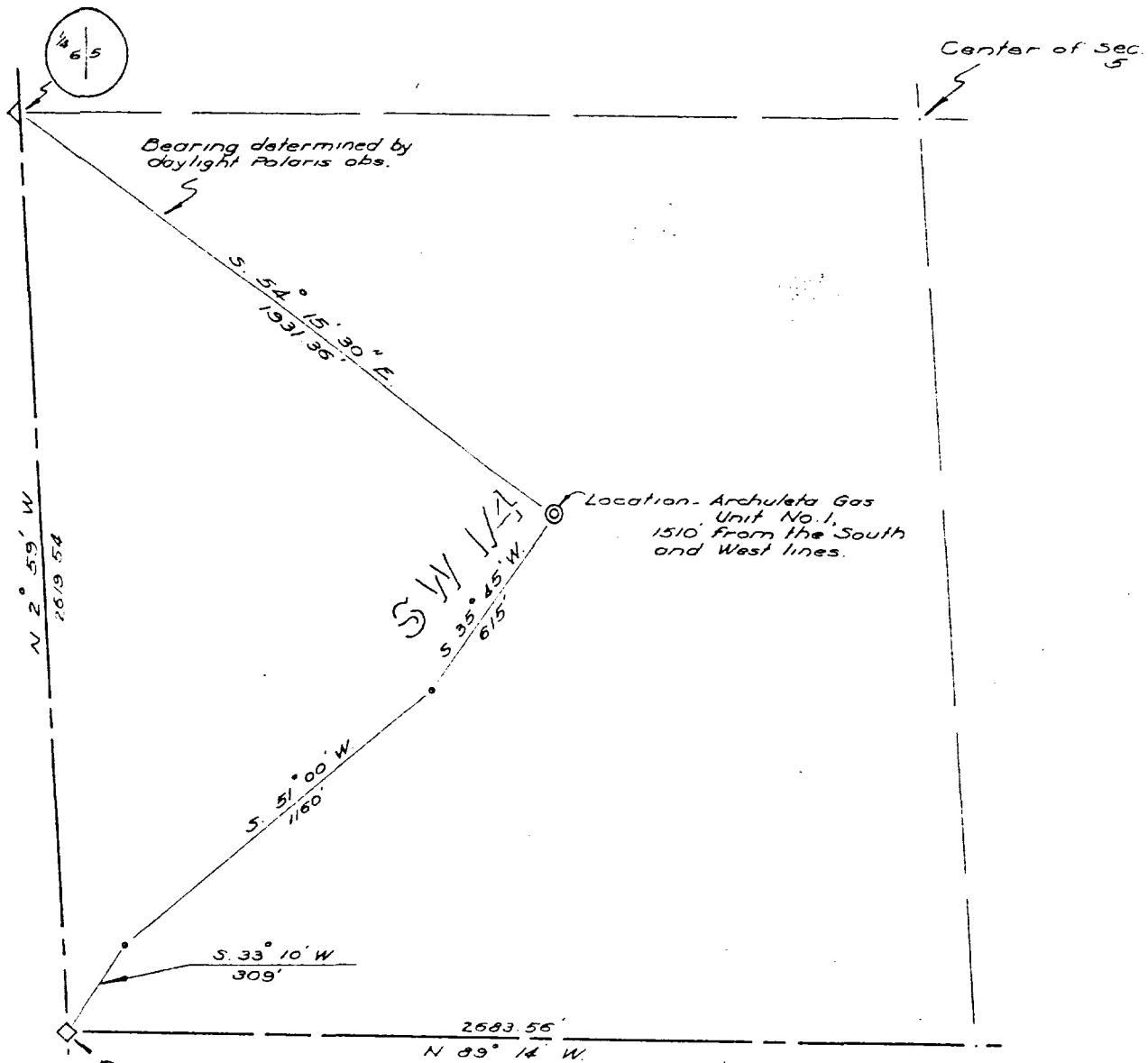
This is to certify that the above plat was prepared from field notes of actual surveys made by me or under my supervision and that the same are true and correct to the best of my knowledge and belief.

(Seal)

Date Surveyed March 4, 1965

Farmington, New Mexico

James P. Leese
 Registered Professional Engineer and/or Land Surveyor



7.29 N. R. 9 W.
6/5
7/8
1950

Corners shown are standard U.S. Cadastral Survey section and 1/4 section corners. Bearings and distances on section lines are from the official U.S. Cadastral Survey "Dependent Resurvey Plat", July 2, 1952.



STANOLIND OIL & GAS CO.

WELL LOCATION, SW 1/4, SEC. 5,
T. 29 N., R. 9 W., N.M.P.M., SAN JUAN,
COUNTY, NEW MEXICO.

FEB. 19, 1954

SCALE, 1"=500'

FILE L-2-54

DRAWN BY EYE

SAN JUAN ENGINEERING CO.
FARMINGTON, NEW MEXICO

This is to certify that the above plat was prepared from field notes of actual surveys made by me and that same are true and correct to the best of my knowledge and belief.

Ernest V. Echolaw

Ernest V. Echolaw
Reg. Land Surveyor
N. Mex. Reg. No. 1545

NEW MEXICO OIL CONSERVATION COMMISSION
WELL LOCATION AND ACREAGE DEDICATION PLAT

Form C-102
Supersedes C-128
Effective 1-1-65

All distances must be from the outer boundaries of the Section.

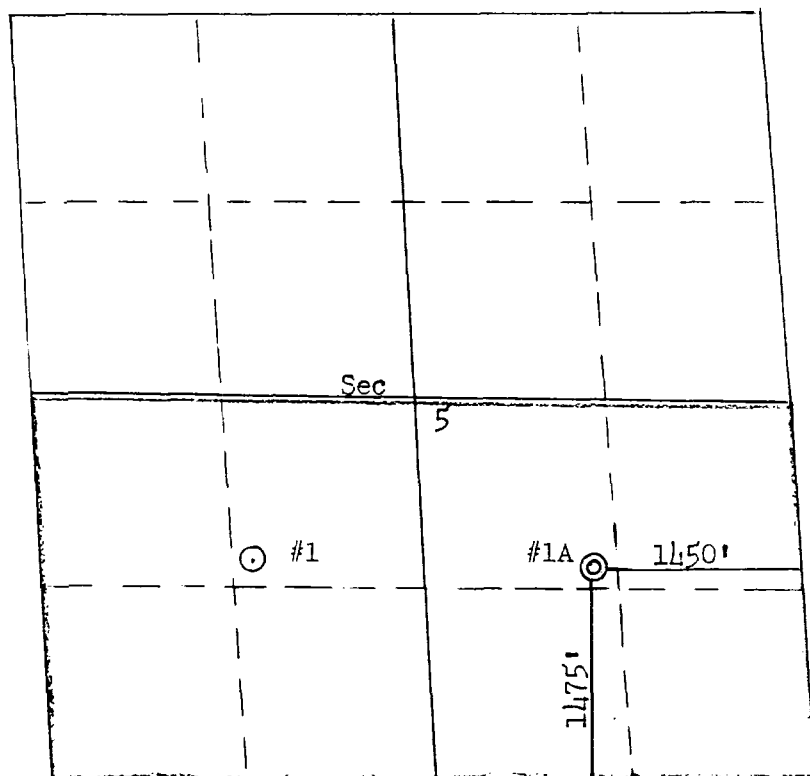
Operator Amoco Production Company			Lease Archuleta Gas Com A		Well No. 1A
Unit Letter J	Section 5	Township 29N	Range 9W	County San Juan	
Actual Footage Location of Well: 1475 feet from the South line and 1450 feet from the East line					
Ground Level Elev: 5580	Producing Formation Mesa Verde		Pool Blanco Mesaverde		Dedicated Acreage: 320.51 Acres

1. Outline the acreage dedicated to the subject well by colored pencil or hachure marks on the plat below.
2. If more than one lease is dedicated to the well, outline each and identify the ownership thereof (both as to working interest and royalty).
3. If more than one lease of different ownership is dedicated to the well, have the interests of all owners been consolidated by communitization, unitization, force-pooling, etc?

☐ Yes ☐ No If answer is "yes," type of consolidation _____

If answer is "no," list the owners and tract descriptions which have actually been consolidated. (Use reverse side of this form if necessary.) _____

No allowable will be assigned to the well until all interests have been consolidated (by communitization, unitization, forced-pooling, or otherwise) or until a non-standard unit, eliminating such interests, has been approved by the Commission.



1"=1 mile

CERTIFICATION

I hereby certify that the information contained herein is true and complete to the best of my knowledge and belief.

H. D. Montgomery

Name
H. D. Montgomery

Position
Area Engineer

Company
AMOCO PRODUCTION COMPANY

Date
December 20, 1976

I hereby certify that the well location shown on this plat was plotted from field notes of actual surveys made by me or under my supervision, and that the same is true and correct to the best of my knowledge and belief.

Date Surveyed
December 13, 1976

Registered Professional Engineer
and Land Surveyor

Fred B. Kerr Jr.
Fred B. Kerr Jr.

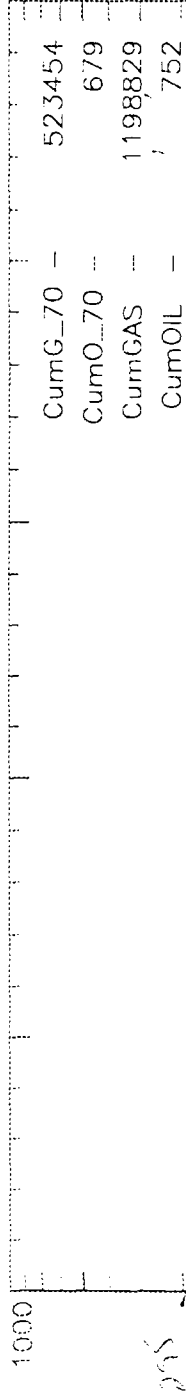
Certificate No.

Engr: zmr14

ARCHULETA GAS COM A 3 Operator- AMOCO PRODUCTION CO

300450866500DK K052909--003 DK

APC_WI - 1.00000000



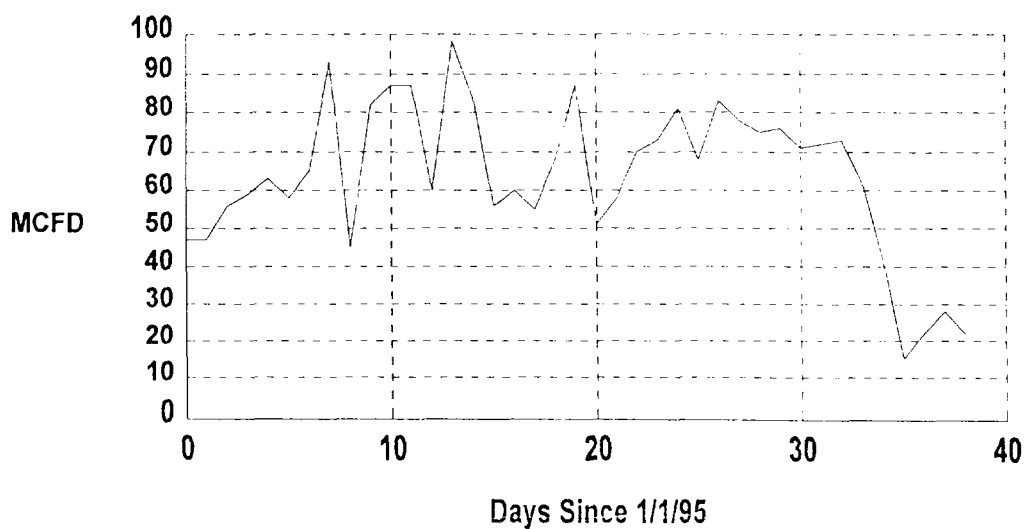
DCLN 0.078
CurrQ 29
RemRes 102948
EUR 1301777
Fit_date 1993 8

New_fit

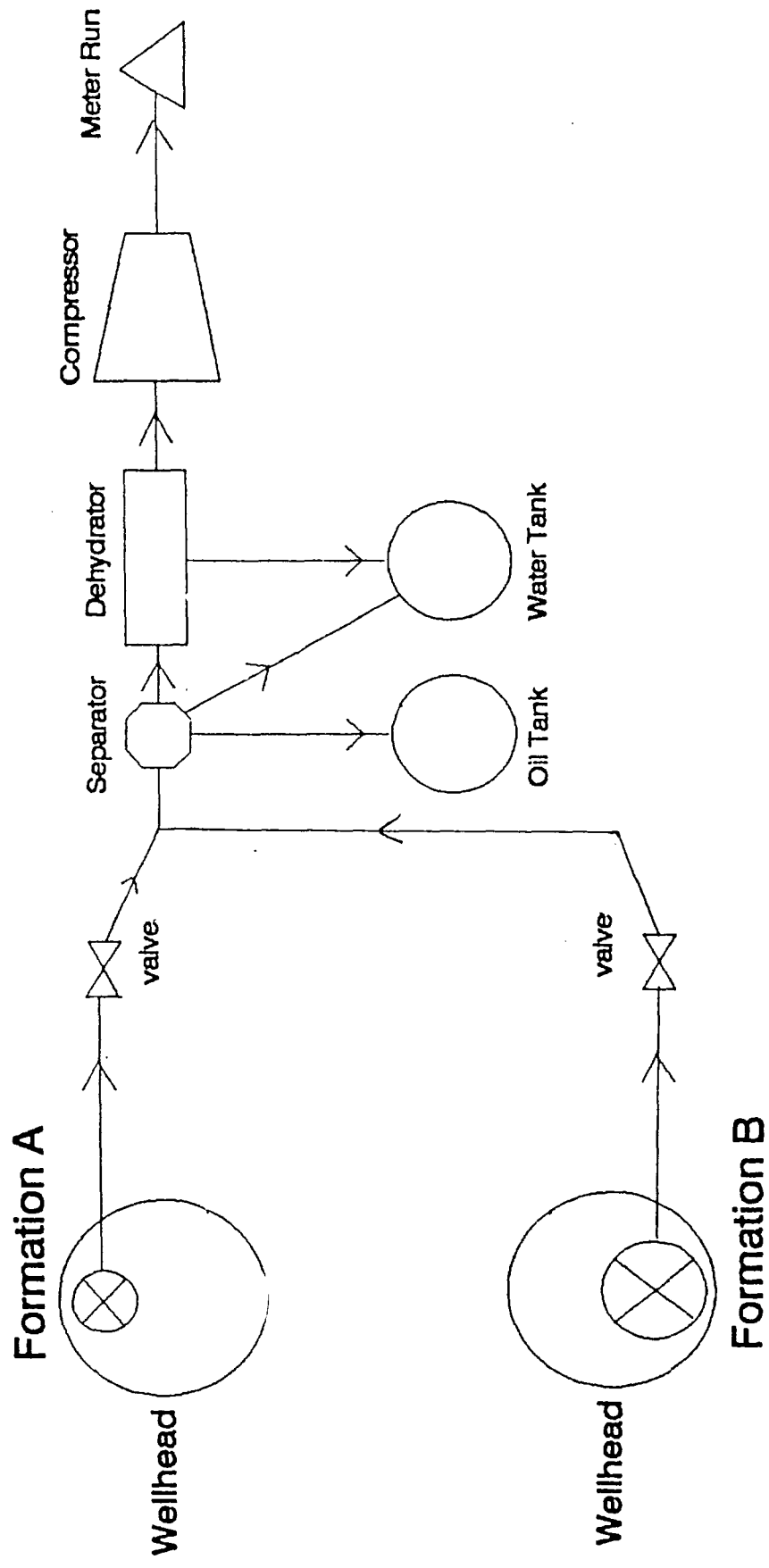
DCLN
CurrQ
RemRes
EUR
Fit_date

$D = 1/2(2005)$
23

San Juan O.C.
WELL: ARCHULETA GC A 003-DK (93518101)
(Downtime excluded)



SURFACE COMMINGLE LOCATION DIAGRAM



San Juan O.C.
WELL: ARCHULETA GC A 001-MV (92387902)
(Downtime excluded)

