

PC XI/R77/13/198



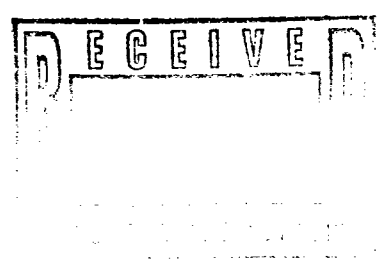
Southern  
Rockies  
Business  
Unit

910

June 8, 1995

Mr. William J. LeMay, Director  
New Mexico Oil Conservation Division  
2040 S. Pacheco Street  
P.O. Box 6429  
Santa Fe, NM 87505

**Application for Unorthodox Location and  
Exception to Rule 303-A - Surface Commingling  
Florance #68E Well  
1880' FNL, 1780' FEL, Section 20-T27N-R8W  
Blanco Mesaverde Pool, Basin Dakota Pool  
San Juan County, New Mexico**



Amoco Production Company hereby requests administrative approval for unorthodox location and to surface commingle production from the Blanco Mesaverde and Basin Dakota Pools in the Florance #68E well referenced above. The well is planned to be drilled as a replacement for the Florance D LS #4 well which was recently plugged and abandoned in the Blanco Mesaverde and will be completed as a dual well with the Basin Dakota. The unorthodox location is necessary due to topographic concerns in the area.

The ownership (WI, RI ORRI) of these pools is identical in this wellbore. Surface commingling will offer an economical method of production using a single train of production equipment for both zones. The actual commercial value of the commingled production will not be less than the sum of the values of the production from each of the common sources of supply. The API gravity of the condensate production from each of these pools is expected to be about 50 degrees. We plan to allocate production to the two pools on the basis of annual well tests.

Attached to aid in your review are plats showing the location and acreage dedicated to the well, plats showing the offset operators and other wells drilled in the area, a topographic map and a schematic of the proposed commingling installation. This spacing unit is on a federal lease NM-03380. A copy of the application will be sent to the BLM requesting their consent for the surface commingling. In addition, a copy of this application will be submitted to the offset operators by certified mail with a request that they furnish your Santa Fe office with a waiver of Objection, and return one copy to Amoco.

Sincerely,  
  
J. W. Hawkins

800  
80201-0000

**WAIVER**

\_\_\_\_\_ hereby waives objection to Amoco's application for an unorthodox well location for the Florance #68E well described above.

By: \_\_\_\_\_ Date: \_\_\_\_\_

cc: Frank Chavez, Supervisor  
Amoco District III  
1000 Rio Brazos Road  
Aztec, NM 87410

Duane Spencer  
Bureau of Land Management  
1235 La Plata Hwy  
Farmington, NM 87401

Jerry Hoover  
Conoco, Inc.  
10 Desta Drive, Suite 100W  
Midland TX 79705-4500

Vastar Resources, Inc.  
15375 Memorial drive  
Houston TX 77079

El Paso Production Company  
c/o Meridian Oil Inc.  
PO BOX 4289  
Farmington NM 87499-4289

Meridian Oil Inc.  
PO BOX 4289  
Farmington NM 87499-4289

District I  
PO Box 1980, Hobbs, NM 88241-1980  
District II  
PO Drawer DD, Artesia, NM 88211-0719  
District III  
1000 N. Brazos Rd., Aztec, NM 87410  
District IV  
PO Box 2088, Santa Fe, NM 87504-2088

State of New Mexico  
Energy, Minerals & Natural Resources Department

OIL CONSERVATION DIVISION  
PO Box 2088  
Santa Fe, NM 87504-2088

Form C-102  
Revised February 21, 1994  
Instructions on back  
Submit to Appropriate District Office  
State Lease - 4 Copies  
Fee Lease - 3 Copies

☐ AMENDED REPORT

WELL LOCATION AND ACREAGE DEDICATION PLAT

1 API Number		2 Pool Code 72319		3 Pool Name Blanco Mesaverde		
4 Property Code		5 Property Name FLORANCE			6 Well Number # 68 E	
7 OGRID No. 00778		8 Operator Name AMOCO PRODUCTION COMPANY			9 Elevation 6715	

10 Surface Location

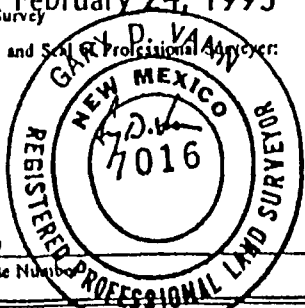
UL or lot no.	Section	Township	Range	Lot Idn	Feet from the	North/South line	Feet from the	East/West line	County
G	20	27 N	8 W		1880	NORTH	1780	EAST	SAN JUAN

11 Bottom Hole Location If Different From Surface

UL or lot no.	Section	Township	Range	Lot Idn	Feet from the	North/South line	Feet from the	East/West line	County

12 Dedicated Acres 320	13 Joint or Infill	14 Consolidation Code	15 Order No.
---------------------------	--------------------	-----------------------	--------------

NO ALLOWABLE WILL BE ASSIGNED TO THIS COMPLETION UNTIL ALL INTERESTS HAVE BEEN CONSOLIDATED  
OR A NON-STANDARD UNIT HAS BEEN APPROVED BY THE DIVISION

16		1288.65'	1288.65'	17 OPERATOR CERTIFICATION I hereby certify that the information contained herein is true and complete to the best of my knowledge and belief.  Signature <u>Julie L. Acevedo</u> Printed Name <u>Julie L. Acevedo</u> Title <u>Sr. Staff Assistant</u> Date <u>3/9/95</u>	
		1880'	1780'		18 SURVEYOR CERTIFICATION I hereby certify that the well location shown on this plat was plotted from field notes of actual surveys made by me or under my supervision, and that the same is true and correct to the best of my belief.  Date of Survey <u>February 24, 1995</u> Signature and Seal of Professional Land Surveyor:  Certificate Number <u>7016</u>
		763'	784'		
		20			
		1246.24'	1246.25'		

BLM RECORD

District I  
PO Box 1980, Hobbs, NM 88241-1980  
District II  
PO Drawer DD, Artesia, NM 88211-0719  
District III  
1000 Rio Brazos Rd., Aztec, NM 87410  
District IV  
PO Box 2088, Santa Fe, NM 87504-2088

State of New Mexico  
Energy, Minerals & Natural Resources Department

OIL CONSERVATION DIVISION  
PO Box 2088  
Santa Fe, NM 87504-2088

Form C-102  
Revised February 21, 1994  
Instructions on back  
Submit to Appropriate District Office  
State Lease - 4 Copies  
Fee Lease - 3 Copies

☐ AMENDED REPORT

WELL LOCATION AND ACREAGE DEDICATION PLAT

1 API Number		1 Pool Code 71599		1 Pool Name Basin Dakota	
4 Property Code		4 Property Name FLORANCE			4 Well Number # 68 E
1 OGRID No. 00778		1 Operator Name AMOCO PRODUCTION COMPANY			4 Elevation 6715

10 Surface Location

UL or lot no.	Section	Township	Range	Lot Idn	Feet from the	North/South line	Feet from the	East/West line	County
G	20	27 N	8 W		1880	NORTH	1780	EAST	SAN JUAN

11 Bottom Hole Location If Different From Surface

UL or lot no.	Section	Township	Range	Lot Idn	Feet from the	North/South line	Feet from the	East/West line	County

12 Dedicated Acres 320	13 Joint or Infill	14 Consolidation Code	15 Order No.
---------------------------	--------------------	-----------------------	--------------

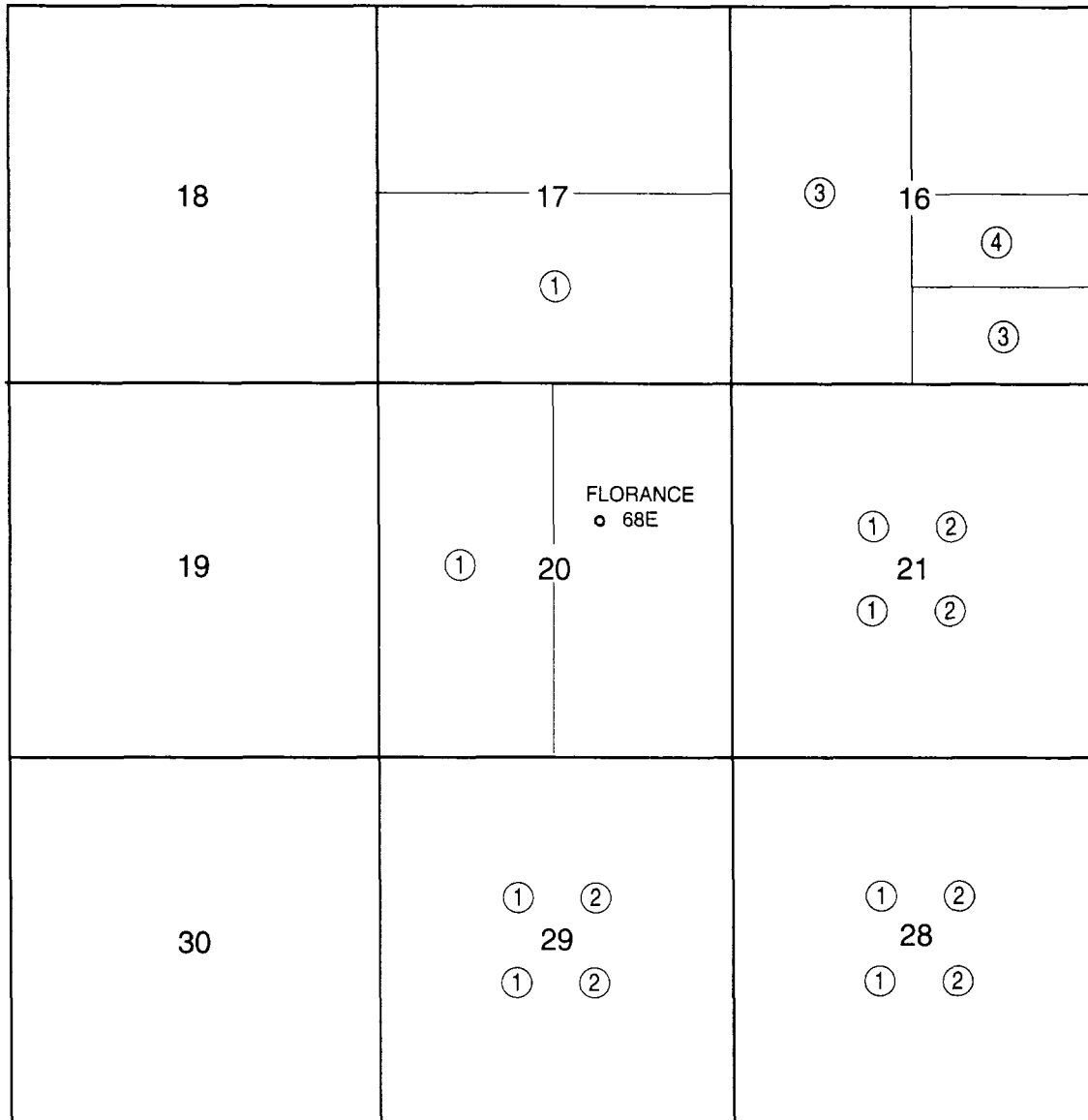
NO ALLOWABLE WILL BE ASSIGNED TO THIS COMPLETION UNTIL ALL INTERESTS HAVE BEEN CONSOLIDATED  
OR A NON-STANDARD UNIT HAS BEEN APPROVED BY THE DIVISION

	16		17 OPERATOR CERTIFICATION	
			I hereby certify that the information contained herein is true and complete to the best of my knowledge and belief	
			Signature  Printed Name Julie L. Acevedo Sr. Staff Assistant Title 3/9/95 Date	
			18 SURVEYOR CERTIFICATION	
		I hereby certify that the well location shown on this plat was plotted from field notes of actual surveys made by me or under my supervision, and that the same is true and correct to the best of my belief.		
		Date of Survey February 24, 1995 Signature and Seal of Professional Surveyor: 		
		7016 Certificate Number		

BLM RECORD

# Amoco Production Company

Offset Operator Plat  
Florance 68E  
T27N-R8W Sec. 20  
1880' FNL & 1780' FEL  
Dakota Formation



- ① Amoco Production Company
- ② Conoco, Inc.  
10 Desta Drive, Suite 100W  
Midland, TX 79705-4500
- ③ Vastar Resources, Inc.  
15375 Memorial Drive  
Houston, TX 77079

- ④ El Paso Production Company  
c/o Meridian Oil Inc.  
P.O. Box 4289  
Farmington, NM 87499-4289

**Amoco Production Company**

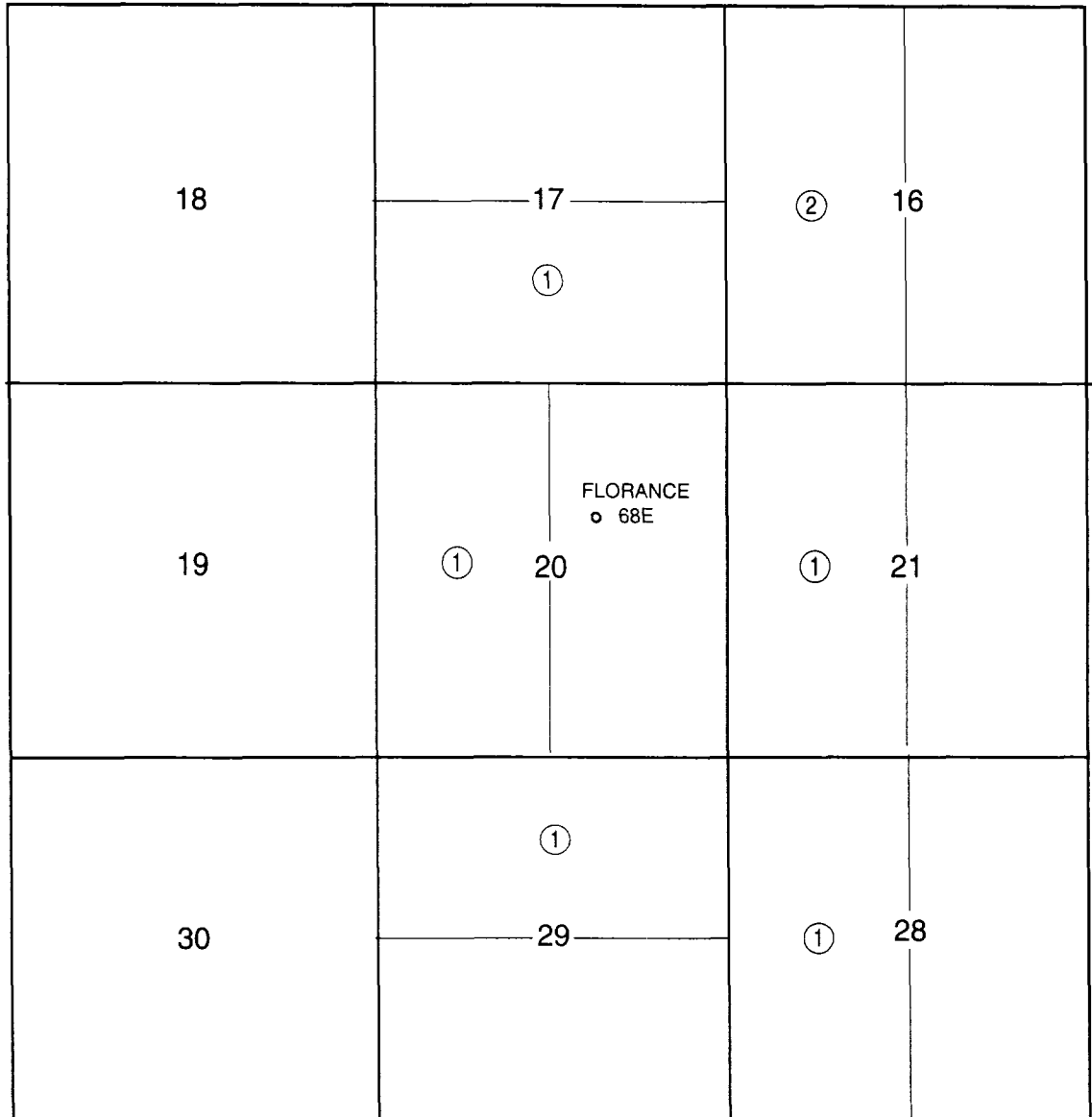
Offset Operator Plat

Florance 68E

T27N-R8W Sec. 20

1880' FNL & 1780' FEL

Blanco Mesaverde Formation

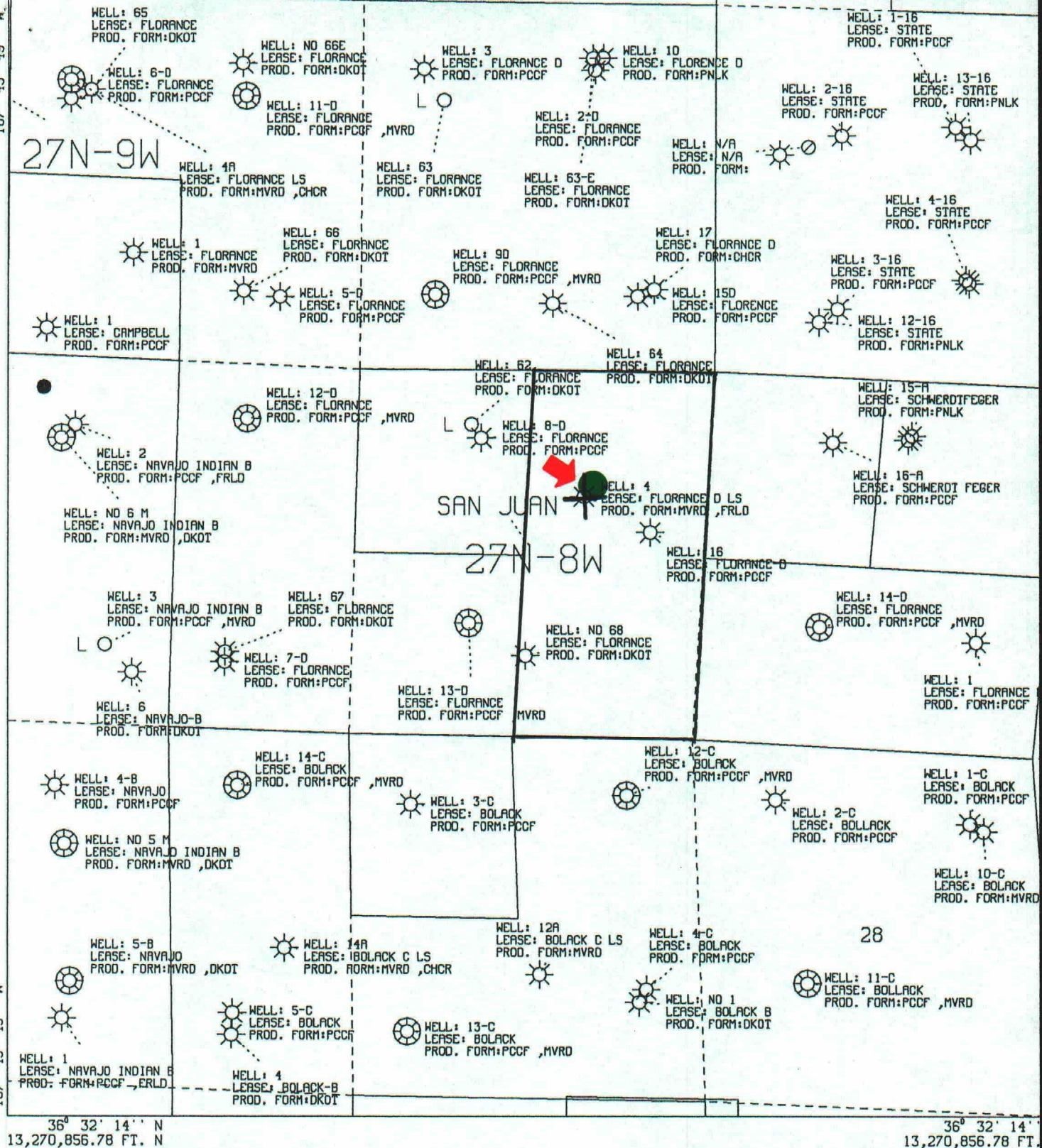


① Amoco Production Company

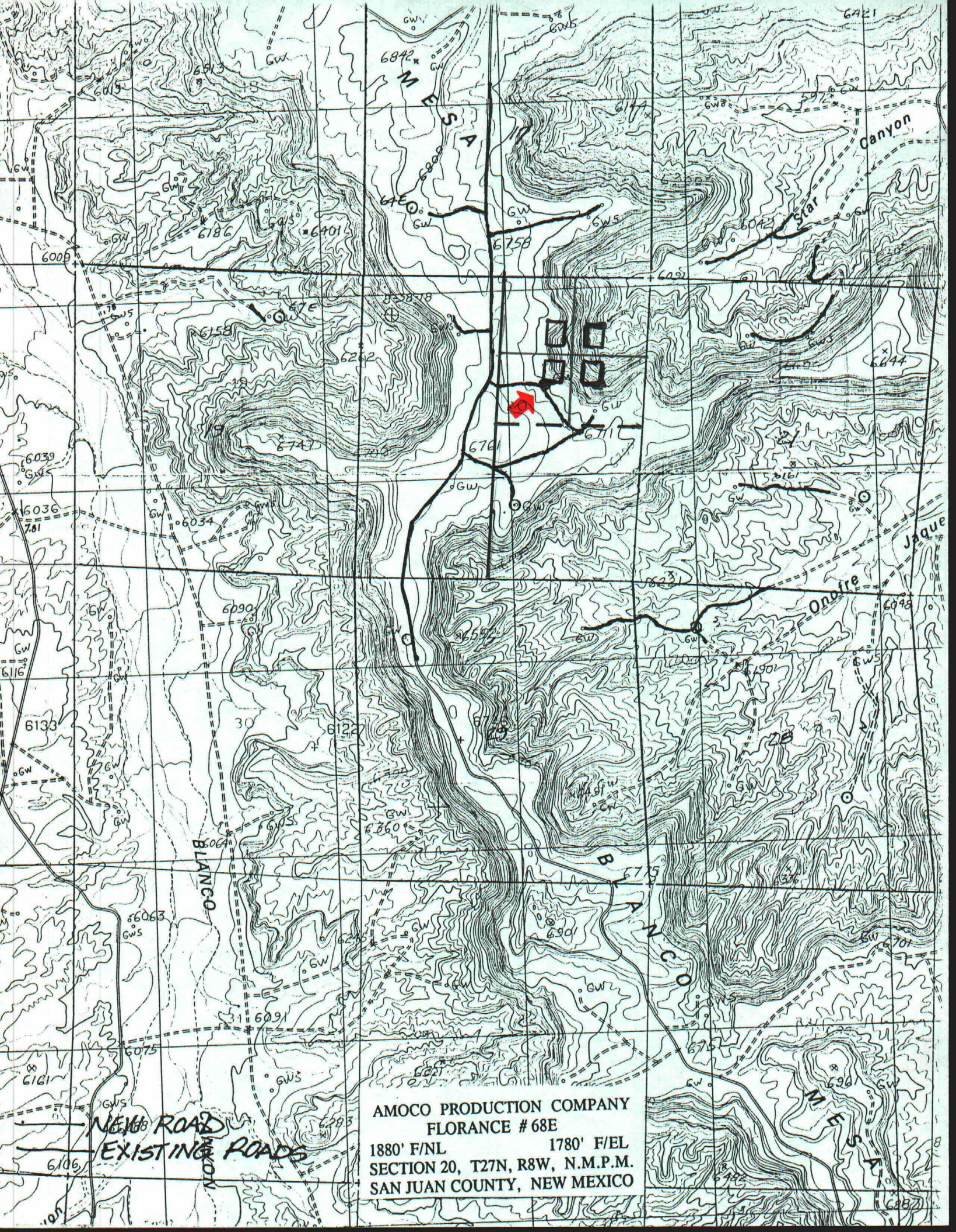
② Meridian Oil Production, Inc.

P.O. Box 4289

Farmington, NM 87499-4289



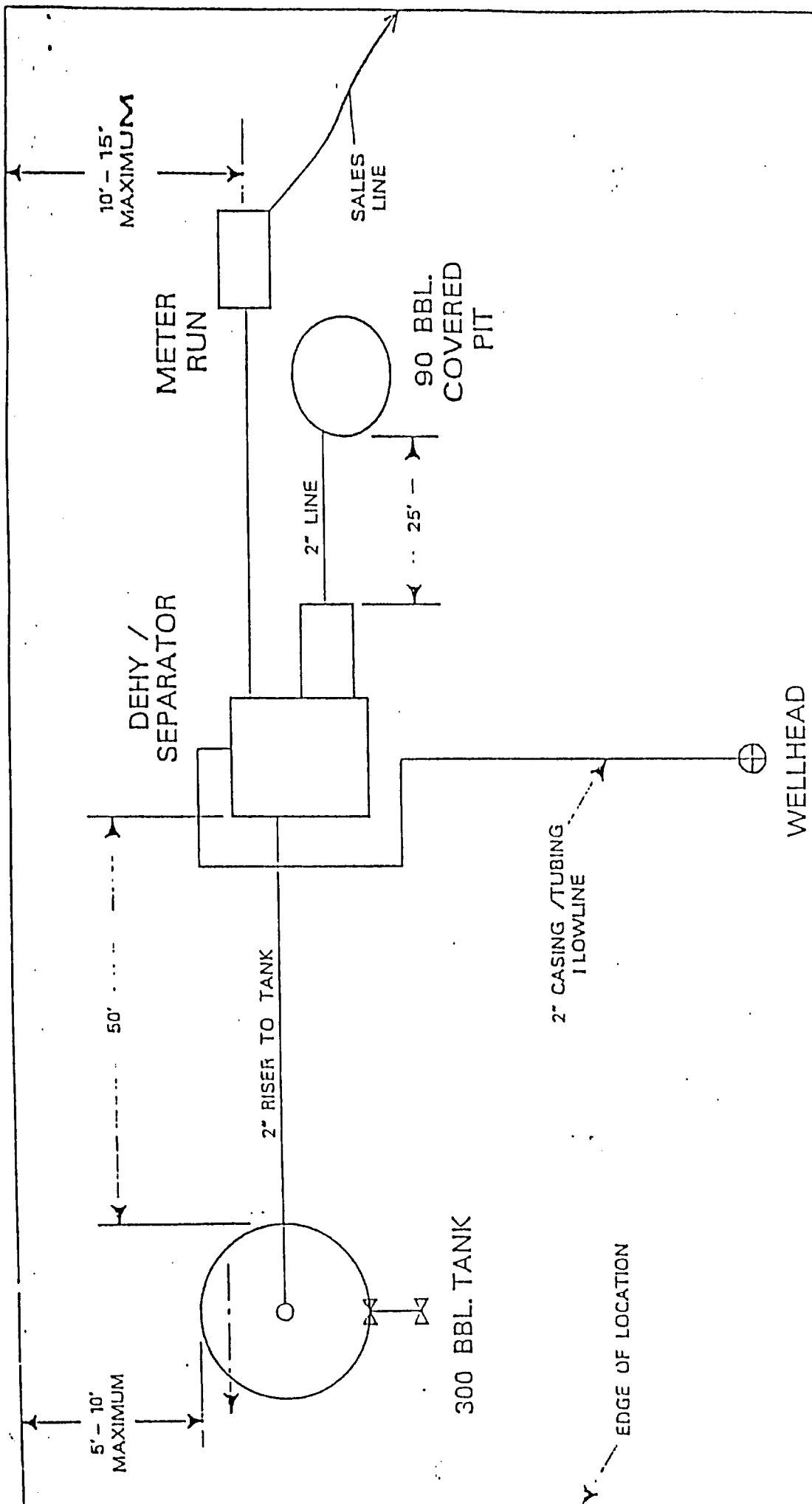




AMOCO PRODUCTION COMPANY  
FLORANCE #68E  
1880' F/NL 1780' F/EL  
SECTION 20, T27N, R8W, N.M.P.M.  
SAN JUAN COUNTY, NEW MEXICO

NEW ROAD  
EXISTING ROADS





NOTE: Compression and Dehydration facilities will be added as required for wellsite production constraints.

SITE SCHEMATIC  
SAN JUAN OPERATIONS CENTER  
SAN JUAN, NEW MEXICO

12 /20 /94