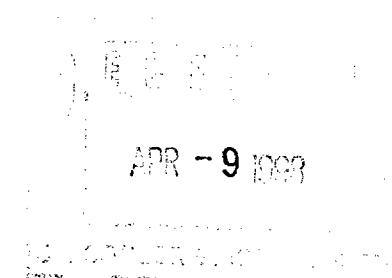


# **BURLINGTON RESOURCES**

MID-CONTINENT DIVISION

3-24-98

**Mr. David Catanach  
State of New Mexico  
Energy, Minerals & Natural Resources Department  
Oil Conservation Division  
2040 South Pacheco Street  
Santa Fe, New Mexico 87505**



**RE: Amend Federal Lease Number on Commingling Order PLC-141  
Authorization to surface commingle & Measurement of Hydrocarbons for  
Gem Wolfcamp (27200) and East Lusk Delaware (41520) Pool Production.**

**Dear Mr. Catanach:**

**Burlington Resources Oil and Gas Company requests that the federal lease number for the Federal "AW" Well #2 be corrected from NM 18232 to NM 12412 for authority to surface commingle production from the Gem Wolfcamp and East lusk Delaware Pools.**

**Lease: Federal "AW" Well #1 (Federal Lease No. NM 12412)  
SW/4 NW/4, Gem Wolfcamp Pool (27200)**

**Federal "AW" Well #2 (Federal Lease No. NM 12412)  
SW/4 SE/4, East Lusk Delaware Pool (41520)**

**both wells are in Section 26, Township 19 South, Range 32 East, NMPM, Lea County, New Mexico.**

**Allocation of production:**

**Also, we would like to amend the method of allocating production to these wells based on individual well test. We will shut down one well while testing the other for 2 to 3 days at a time to obtain individual well test. Production for the well on test will go through a heater treater and into a tank with gauges to come up with an accurate well test. The commingled production shall be stored in the Federal "AW" tank battery facility located in UL-O, Section 26, T19S, R32E, Lea County, New Mexico.**

Page -2-

**Production from wells:**

<b><u>Well Number</u></b>	<b><u>Gravity</u></b>	<b><u>BOPD</u></b>	<b><u>MCFPD</u></b>	<b><u>Water/Formation</u></b>	
<b>Federal "AW" #1</b>	<b>41</b>	<b>21</b>	<b>10</b>	<b>72</b>	<b>Wolfcamp</b>
<b>Federal "AW" #2</b>	<b>37.5</b>	<b>03</b>	<b>18</b>	<b>6</b>	<b>Delaware</b>

**Working Interest:**

**Federal "AW" #1      100% Burlington Resources**

**Federal "AW" #2      75% Burlington Resources  
                                 25% Atlantic Richfield Oil & Gas Co.**

**This proposed commingling of production is in the interest of conservation and will not result in reduced royalty or improper measurement of production. The proposed commingling is necessary to continue operations for the above referenced lease.**

**Should you have any questions, or need additional information, please contact me at A/C 915-688-6906.**

**Sincerely,**



**Maria L. Perez  
Regulatory Representative**

**s:mlp1:blmcom4.doc**



NEW MEXICO ENERGY, MINERALS  
& NATURAL RESOURCES DEPARTMENT

OIL CONSERVATION DIVISION  
2040 South Pacheco Street  
Santa Fe, New Mexico 87505  
(505) 827-7131

COMMINGLING ORDER PLC-141

Burlington Resources Oil & Gas Company  
P. O. Box 51810  
Midland, TX 79710-1810  
Attention: Ms. Maria L. Perez

The above-named company is hereby authorized to commingle Gem Wolfcamp (27200) and East Lusk Delaware (41520) Pool production from the following leases:

Lease: Federal "AW" Lease Well No. 1 (Federal Lease No. NM12412)  
Description: SW/4 NW/4, and,

Lease: Federal "AW" Lease Well No. 2 (Federal Lease No. NM18232)  
Description: SW/4 SE/4,

*Same Lease  
# as #1.  
NM12412*

both in Section 26, Township 19 South, Range 32 East, NMPM, Lea County, New Mexico.

*Change to individual well test*

Production shall be allocated to each lease by ~~separately~~ metering the production from each lease prior to commingling.

REMARKS: Commingled production shall be stored in the Federal "AW" tank battery facility located in Unit Letter "O" of Section 26, Township 19 South, Range 32 East, Lea County, New Mexico.

FURTHER: The operator will notify the Hobbs District Office of the Division upon implementation of the commingling process.

NOTE: This installation shall be installed and operated in accordance with the applicable provisions of Rule 309-B of the Division Rules and Regulations and the Division "Manual for the Installation and Operation of Commingling Facilities." It is the responsibility of the producer to notify the transporter of this commingling authority.

NOTE: Validation of this authority will be accomplished by like approval from the U.S. Bureau of Land Management.

*See BR letter dated  
3-24-98 to correct  
lease number for  
well #2 + method  
of allocation of production*

*Commingling Order PLC-141*  
*Burlington Resources Oil & Gas Company*  
*March 16, 1998*  
*Page 2*

---

DONE at Santa Fe, New Mexico, on this 16th day of March, 1998.

  
LORI WROTENBERY,  
Division Director

LW/BES/kv

cc: Oil Conservation Division - Hobbs  
US Bureau of Land Management - Carlsbad

**TO: Mr. David Catanach                      DATE: 4-7-98**  
**Oil Conservation Division**  
**Santa Fe, New Mexico**  
**FAX #505-827-1389**

**FR: Maria L. Perez**  
**Burlington Resources Oil & Gas Company**  
**Midland, Texas**  
**Tel. No. 915-688-6906**  
**Fax No. 915-688-6007**

**RE: Correcting previously approved PLC-141**  
**to Surface Commingling**  
**Federal "AW" #1 & 2**  
**Lease No. 12412**  
**Sec. 26, T19S, R32E**  
**Lea County, NM**

**David,**

**I need to make some corrections on Surface Commingling Permit #PLC-141 dated 3-16-98. Due to another lease's paperwork being filed in the Federal AW Lease file, I picked up the wrong lease number for well #2. Both wells are under the same lease number but producing from different fields and reservoirs.**

**Also, I would like to change the method of allocating production from individual well metering to individual well test. See attachments. Original is in the mail to you today.**

**We have not surface commingled these two wells yet. We are currently waiting on approval from BLM to lay a flowline from Well #1 to the Well #2 battery.**

**Give me a call when you have reviewed & approved these changes. Plans are to lay the flowline by the end of this week and surface commingle.**

**(Number of Pages – 6)**

District I,  
PO Box 1980, Hobbs, NM 88241-1980  
District II  
811 S. 1st Street, Artesia, NM 88210-2834  
District III  
1000 Rio Brazos Rd., Aztec, NM 87410  
District IV  
2040 South Pacheco, Santa Fe, NM 87505

State of New Mexico  
Energy, Minerals & Natural Resources Department

OIL CONSERVATION DIVISION  
2040 South Pacheco  
Santa Fe, NM 87505

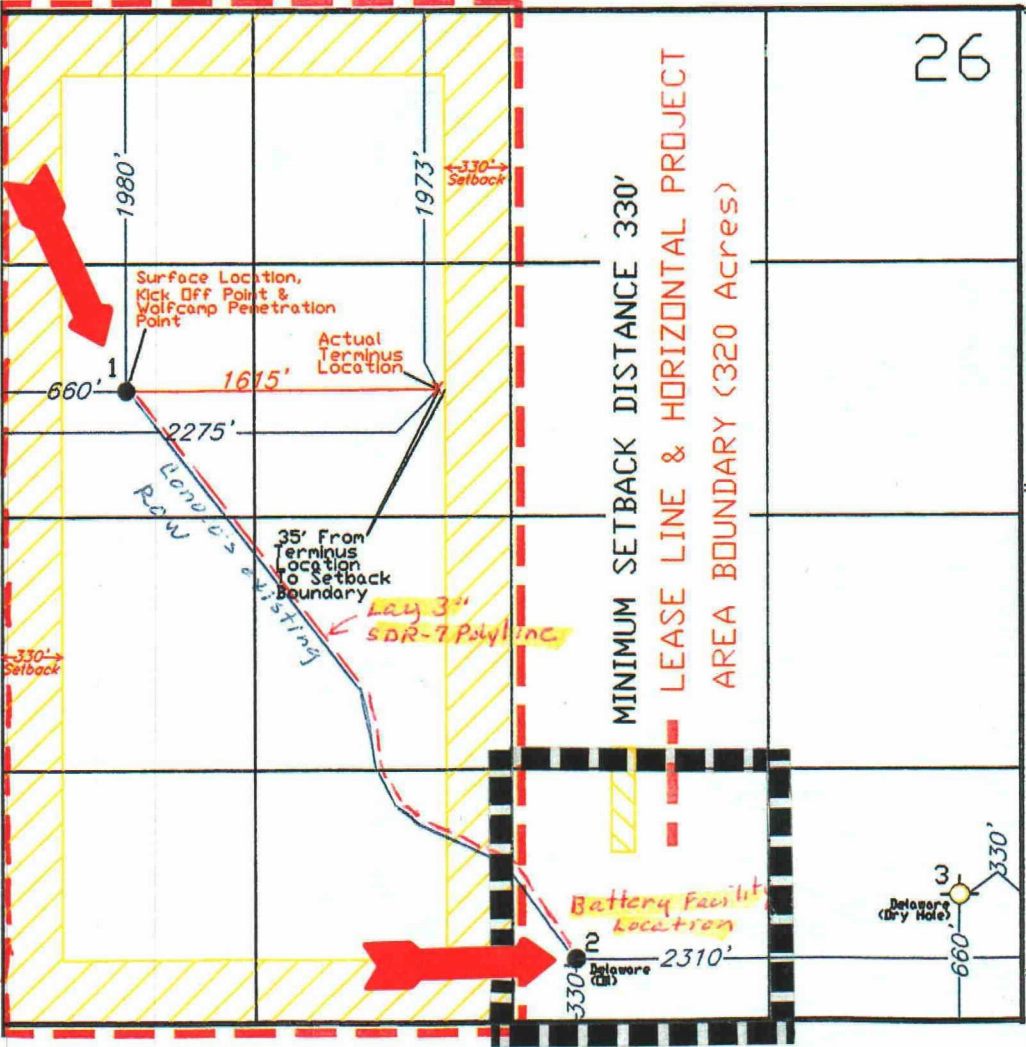
Form C-102  
Revised October 18, 1994  
Instructions on back  
Submit to Appropriate District Office  
State Lease - 4 Copies  
Fee Lease - 3 Copies

☐ AMENDED REPORT

WELL LOCATION AND ACREAGE DEDICATION PLAT

<sup>1</sup> API Number 30-025-27017		<sup>2</sup> Pool Code 27200		<sup>3</sup> Pool Name GEM WOLFCAMP					
<sup>4</sup> Property Code 014367		<sup>5</sup> Property Name FEDERAL "AW"				<sup>6</sup> Well Number 1			
<sup>7</sup> OGRID No. 26485		<sup>8</sup> Operator Name BURLINGTON RESOURCES OIL & GAS COMPANY				<sup>9</sup> Elevation 3581.8			
<sup>10</sup> Surface Location									
UL or lot no. E	Section 26	Township 19S	Range 32E	Lot. Idn	Feet from the 1980	North/South Line NORTH	Feet from the 660	East/West line WEST	County LEA
<sup>11</sup> Bottom Hole Location If Different From Surface									
UL or lot no. F	Section 26	Township 19S	Range 32E	Lot. Idn	Feet from the 1973	North/South Line NORTH	Feet from the 2275	East/West line WEST	County LEA
<sup>12</sup> Dedicated Acres 320		<sup>13</sup> Joint or Infill		<sup>14</sup> Consolidation Code		<sup>15</sup> Order No.			

NO ALLOWABLE WILL BE ASSIGNED TO THIS COMPLETION UNTIL ALL INTERESTS HAVE BEEN CONSOLIDATED  
OR A NON-STANDARD UNIT HAS BEEN APPROVED BY THE DIVISION



<sup>17</sup> OPERATOR CERTIFICATION I hereby certify that the information contained herein is true and complete to the best of my knowledge and belief.	
Signature <i>Maria L. Perez</i>	
Printed Name MARIA L. PEREZ	
Title REGULATORY REPRESENTATIVE	
Date 3-9-98	
<sup>18</sup> SURVEYOR CERTIFICATION I hereby certify that the well location shown on this plat was plotted from field notes of actual surveys made by me or under my supervision, and that the same is true and correct to the best of my belief.	
Date of Survey	
Signature and Seal of Professional Surveyor:	
Certificate Number	