

PC ~~FILE~~ 2/8/99
993 ~~153~~

Mobil Exploration & Producing U.S. Inc.

P.O. BOX 633
MIDLAND, TEXAS 79702-0633

MIDLAND SITE
ENVIRONMENTAL, REGULATORY &
LOSS PREVENTION

January 15, 1999

JAN 18 1999

New Mexico Oil Conservation
2040 S. Pacheco
Santa Fe, New Mexico 87505

NEW MEXICO OIL CONSERVATION DIVISION

Ref: Surface Commingling Application
Bridges State 120 Battery and
Bridges State Consolidated
Battery
Lease No. B-1520
Lea County, New Mexico

Dear Sir:

Mobil Exploration & Producing US, Inc. as agent for Mobil Producing TX & NM Inc. hereby applies for surface commingling on Bridges State Leases in Lea County.

Information on subject leases/fields is as follows:

Bridges State 120 Battery

Vacuum (Middle Penn) 62309

Bridges State #120	UL/N Sec. 13, T17S, R34E
Bridges State #126	UL/J Sec. 11, T17S, R34E
Bridges State #512	UL/O Sec. 11, T17S, R34E

Bridges State Consolidated Battery

Vacuum (Grayburg - San Anders) 61750

Bridges State #60	UL/H Sec. 14, T17S, R34E
Bridges State #502	UL/M Sec. 13, T17S, R34E

<u>Well Name & No.</u>	<u>Gravity</u>	<u>Comm. Gravity</u>	<u>Current Production</u>	
			<u>Oil</u>	<u>Water</u>
Bridges State #512	40.2	38.0	14	0
#126	40.8	38.0	0	2
#120	40.8	38.0	49	971
#60	36.2	38.0	2	11
#502	36.2	38.0	4	20



Environmental
Awareness

Attached is the following pertinent information for this application according to rules and procedures:

- A schematic diagram of the proposed installation.
- A plat showing the location of all the wells on the lease and the pool from where each well is producing.
- Commissioner of Public Lands Approval of Commingling

The production will be allocated by testing prior to commingling.

The result of this surface commingling will not reduce the commercial value of the commingled product.

If additional information is needed, please call me at (915) 688-2585.

Sincerely,

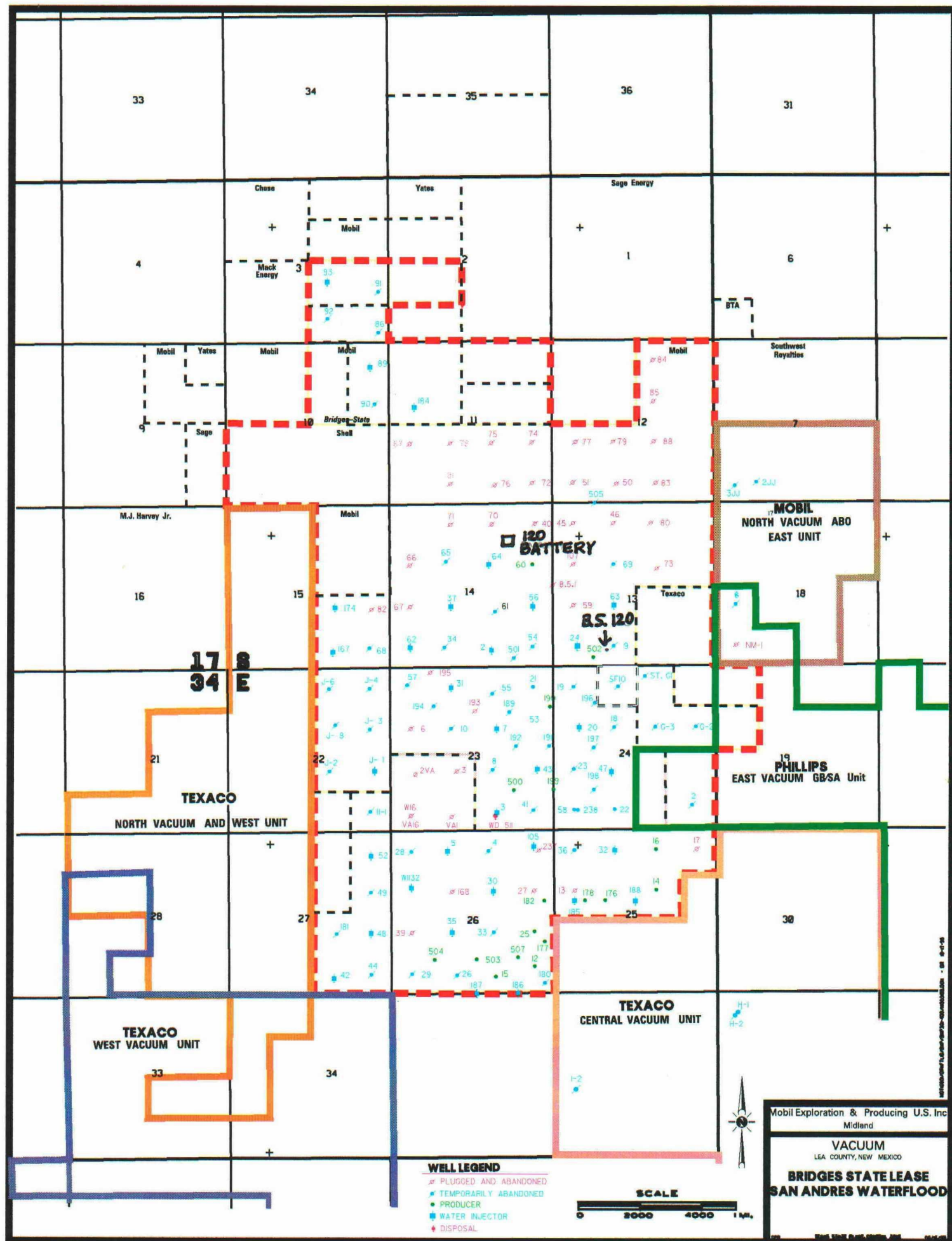
Shirley Houchins

Shirley Houchins
Environmental & Regulatory Technician

Attachments

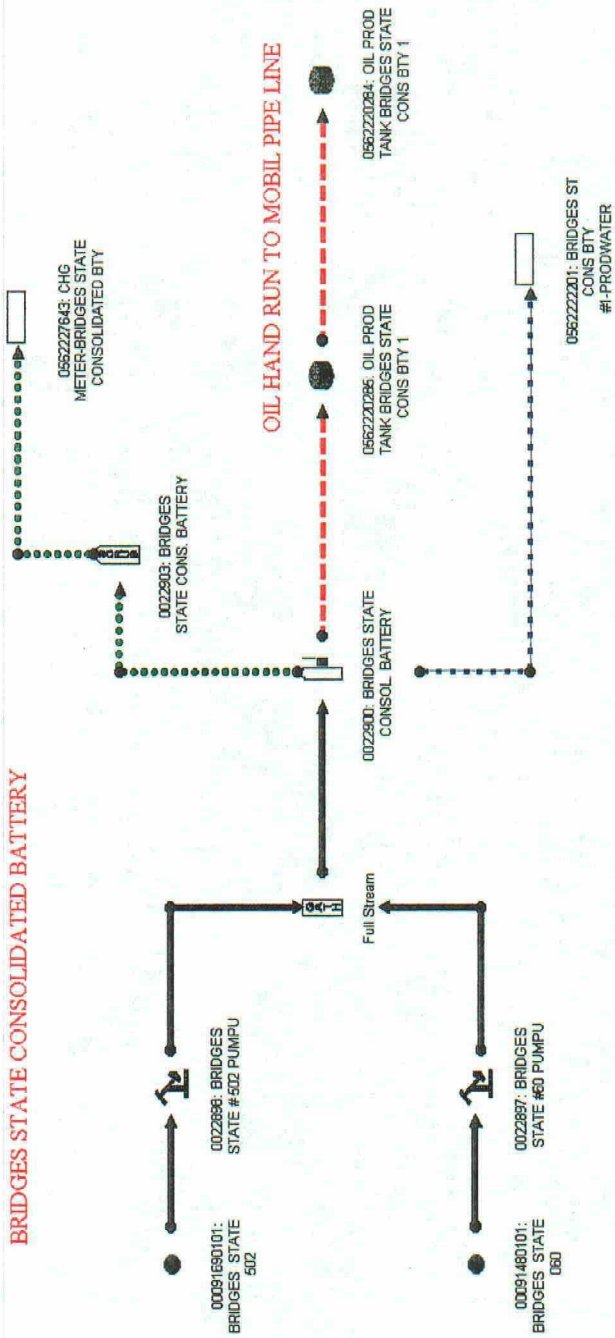


**Environmental
Awareness**



GAS GOES TO GPM GAS CORP.

BRIDGES STATE CONSOLIDATED BATTERY



OIL HAND RUN TO MOBIL PIPE LINE

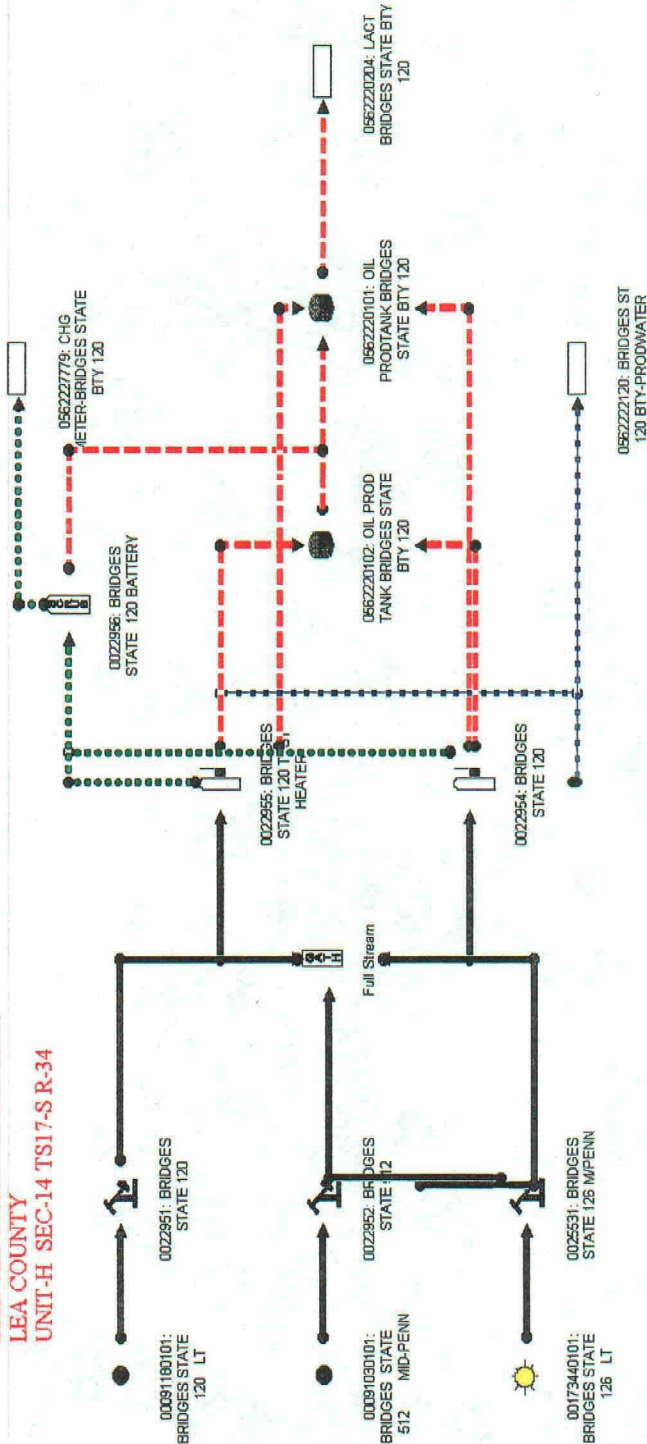
WATER GOES TO SEC.-27 DISPOSAL

LEA COUNTY
NM
UNIT-J SEC-14 TS 17-S R 34-E

Full Stream Gas Oil Water
CO2 Steam Other

BRIDGES STATE 120 BATTERY
LEA COUNTY
UNIT-H SEC-14 TS17-S R-34

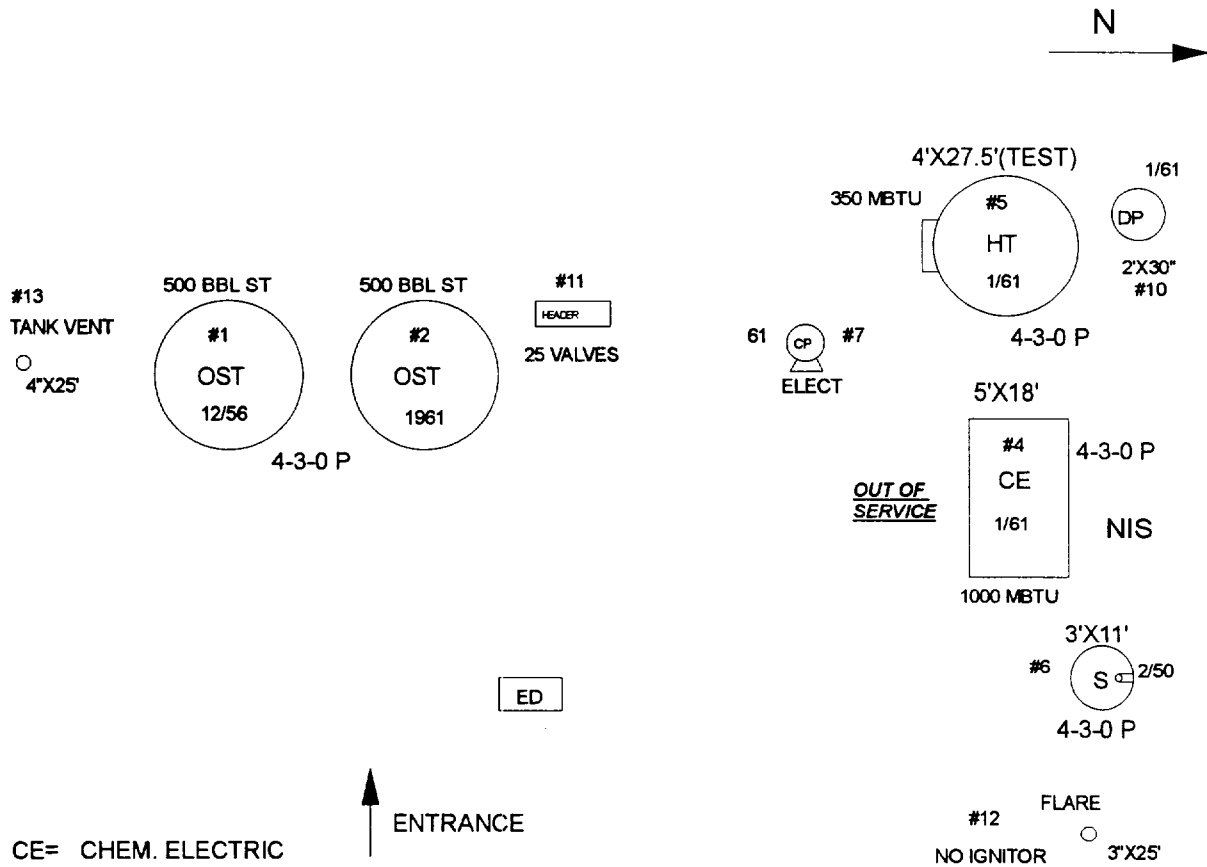
GAS GOES TO GPM GAS CORP.



WATER GOES TO SEC.-27 DISPOSAL

Full Stream Gas Oil Water
CO2 Steam Other

FACILITY DRAWING



DIRECTIONS TO FACILITY

WEST OF LOVINGTON NM ON HWY 82 FOR 8 MILES TO HWY 238 THEN SOUTH 5.6 -

WEST 0.8 MILES TO CALECHE ROAD NORTH 0.4 MILES, BATTERY ON LEFT

AVG. DAILY PROD: 43 BO, 445 BW, 0 MCFG, 19600 PPM H2S

14.8 MILES FROM LOVINGTON

SYMBOLS:

OST-OIL STORAGE TANK
LST-LUBE OIL STORAGE TANK
WST-WATER STORAGE TANK
SOT-SKIM OIL TANK
CHT-CHEMICAL DRUMS OR TANKS
GB-GUN BARREL
HT-HEATER TREATER
LH-LINE HEATER
S-SEPARATOR
FWKO-FREE WATER KNOCKOUT
VRU-VAPOR RECOVERY UNIT
L-LACT UNIT
IP-WATER INJECTION PUMP
CP-CIRCULATING PUMP
TP-TRANSFER PUMP
ED-ELECTRICAL DISCONNECT

MOBIL EXPLORATION & PRODUCING U.S., INC.
MIDLAND DIVISION

FIELD VACUUM

LEASE BRIDGES STATE W.E. CONSOLIDATED

FACILITY CONSOLIDATED BATTERY

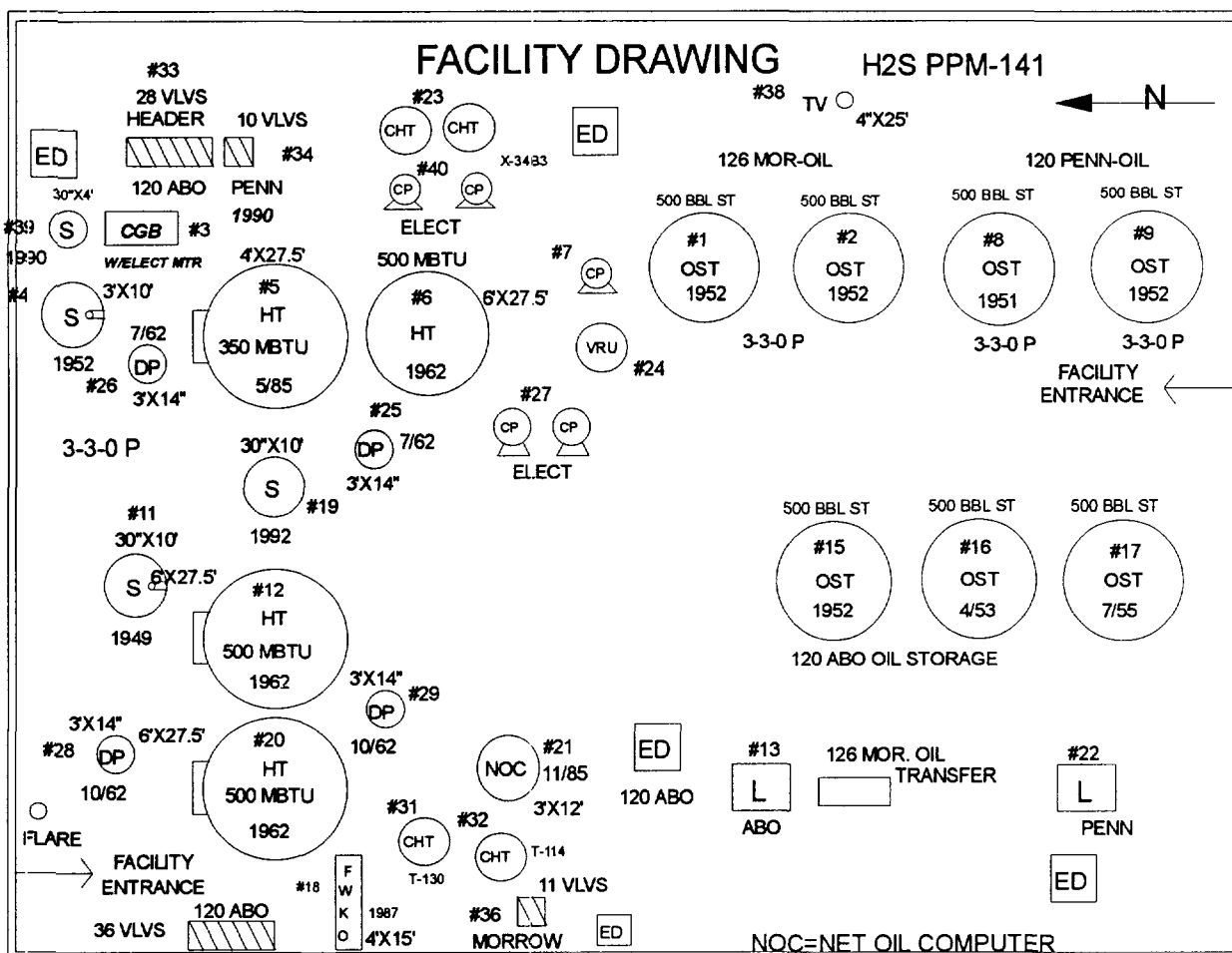
COUNTY LEA UNIT J STATE NM

SECTION 14 TOWNSHIP 17S RANGE 34E

DATE DRAWN: 06-12-96

E&R CODE: 59

FILE: ER59.DRW





COMMERCIAL RESOURCES
(505)-827-5724

SURFACE RESOURCES
(505)-827-5795

MINERAL RESOURCES
(505)-827-5744

ROYALTY
(505)-827-5772

**State of New Mexico
Commissioner of Public Lands**

Ray Powell, M.S., D.V.M.
310 Old Santa Fe Trail, P. O. Box 1148
Santa Fe, New Mexico 87504-1148
Phone (505)-827-5760, Fax (505)-827-5766

PUBLIC AFFAIRS
(505)-827-5765

ADMINISTRATIVE MGMT.
(505)-827-5700

LEGAL
(505)-827-5715

PLANNING
(505)-827-5752

January 12, 1999

Mobil Exploration & Producing U.S. Inc.
P. O. Box 633
Midland, Texas 79702-0633

Attn: Ms. Shirley Houchins

Re: Surface Commingling Application
Bridges State 120 Battery and
Bridges State Consolidated Battery
State Lease Number B-1520-1
Lea County, New Mexico

Dear Ms. Houchins:

We are in receipt of your letter of December 21, 1998. Your letter requests our approval to surface commingle the production from the Bridges State Well Nos. 512, 126, and 120 (Vacuum; Middle Penn) with the production from the Bridges State Well Nos. 60, and 502 (Vacuum; Grayburg-San Andres).

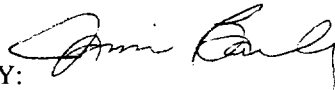
Since it appears that all the New Mexico Oil Conservation Division's rules and regulations have been complied with, and there will be no loss of revenue to the State of New Mexico as a result of your proposed operation, your request is hereby approved. Our approval is subject to like approval by the New Mexico Oil Conservation Division.

Please submit a \$30.00 dollar filing.

If you have any questions or if we may be of further help, please contact Pete Martinez at (505) 827-5791.

Very truly yours,

RAY POWELL, M.S., D.V.M.
COMMISSIONER OF PUBLIC LANDS

BY: 

JAMI BAILEY, Director
Oil, Gas and Minerals Division
(505) 827-5744
RP/JB/pm

pc: Reader File, OCD-Attention: David Catanach, Ben Stone,