



NEW MEXICO ENERGY, MINERALS
& NATURAL RESOURCES DEPARTMENT

OIL CONSERVATION DIVISION
2040 South Pacheco Street
Santa Fe, New Mexico 87505
(505) 827-7131

AMENDED COMMINGLING ORDER PLC-100

Texaco Exploration & Production, Inc.
P.O. Box 730
Hobbs, New Mexico 88241-0730

Attention: Mr. Monte C. Duncan

The above-named company is hereby authorized to commingle North Vacuum Abo (61760), Vacuum Upper Penn (62320), Vacuum Wolfcamp (62340), Vacuum Drinkard (62110) and Wildcat Atoka (96454) Pool production from the following leases:

Lease: State 'BA' Well Nos.6 and 8 (Lease B-1565-8)
Description: NW/4 NW/4, NW/4 NE/4 of Section 36, Township 17 South, Range 35 East and;

Lease: NM 'O' State NCT-1 Well Nos.11, 14 and 38 (Lease B-155-6)
Description: S/2 NW/4, S/2 NE/4 and N/2 SE/4 of Section 36, Township 17 South, Range 34 East, and;

Lease: NM 'N' State Well No.10 (Lease B-1722-2)
Description: SW/4 SW/4 of Section 30, Township 17 South, Range 35 East, and;

Lease: NM 'Q' State Well No.4 (B-1056-2)
Description: S/2 SE/4 and SE/4 SE/4 of Section 30;

all in Lea County, New Mexico.

Production shall be allocated to each lease by well tests. (If this method is to be authorized, all commingled production must be of identical ownership including working interest, royalty interest, and overriding royalty interest.)

FURTHER: The operator shall notify the Hobbs District Office of the Division upon implementation of the commingling process.

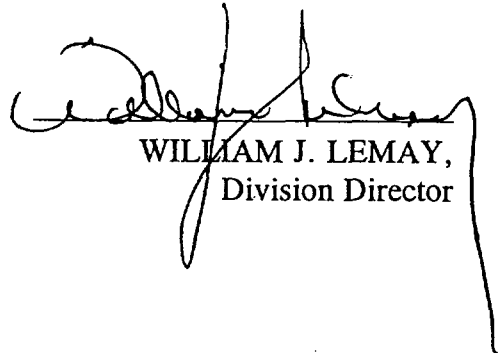
NOTE: This installation shall be installed and operated in accordance with the applicable provisions of Rule 309-B of the Division Rules and Regulations and the Division "Manual for the Installation and Operation of Commingling Facilities." It is the responsibility of the producer to notify the transporter of this commingling authority. *(Sent to TNMPL, Bob Brown)*

NOTE: Validation of this authority shall be accomplished with like approval by the State Land Office.

Amended Commingling Order PLC-100
Texaco Exploration & Production, Inc.
July 12, 1996
Page 2

REMARKS: The commingled production from the aforementioned leases shall be stored in the "New Mexico N, O, Q, & BA Battery" tank battery facility located in Unit Letter 'O' of Section 25, Township 17 South, Range 34 East, NMPM, Lea County, New Mexico.

DONE at Santa Fe, New Mexico, on this 12th day of July, 1996.



WILLIAM J. LEMAY,
Division Director

WJL/BES

cc: Oil Conservation Division - Hobbs
State Land Office - Oil & Gas Division

COMMINGLE PRE-APPLICATION

STATE LAND OFFICE RULES 1.053-1.055 APPLY TO COMMINGLING OIL AND GAS PRODUCTION FROM NEW MEXICO STATE LANDS. PLEASE PROVIDE THE FOLLOWING INFORMATION SO THAT WE CAN DETERMINE WHETHER OR NOT A COMMINGLE APPLICATION PACKAGE SHOULD BE SUBMITTED.

1. BRIEFLY DESCRIBE WHAT YOU PROPOSE TO DO.

PLEASE SEE ATTACHED LETTER

2. FILL IN THE FOLLOWING INFORMATION FOR EACH WELL.

WELL NUMBER	LEGAL DESCRIPTION	LESSEE OF RECORD	N.M. LEASE NUMBER	FORMATION
N.M. O State NCT-1 #39	G 36 17S 34E	TEPI	B-155	Vacuum Upper Penn
State BA #14	A 36 17S 34E	TEPI	B-1565	Vacuum Atoka

NAME: Monte C. Duncan, Engineer's Assistant

COMPANY: Texaco Exploration and Production 205 E. Bender; Hobbs, N.M.

PHONE NUMBER: (505) 397-0418 or (505) 393-7191

IF YOU HAVE ANY QUESTIONS, PLEASE CONTACT THE OIL, GAS AND MINERALS DIVISION AT (505) 827-5744.

KKCS 06-04-91

DISTRICT I
P. O. Box 1980, Hobbs, NM 88240

DISTRICT II
P. O. Drawer DD, Artesia, NM 88210

DISTRICT III
1000 Rio Brazos Rd., Aztec, NM 87410

DISTRICT IV
P. O. Box 2088, Santa Fe, NM 87504-2088

State of New Mexico
Energy, Minerals and Natural Resources Department

OIL CONSERVATION DIVISION
PO Box 2088
Santa Fe, NM 87504-2088

Form C-102
Revised February 10, 1994

Instructions on back

Submit to Appropriate District Office

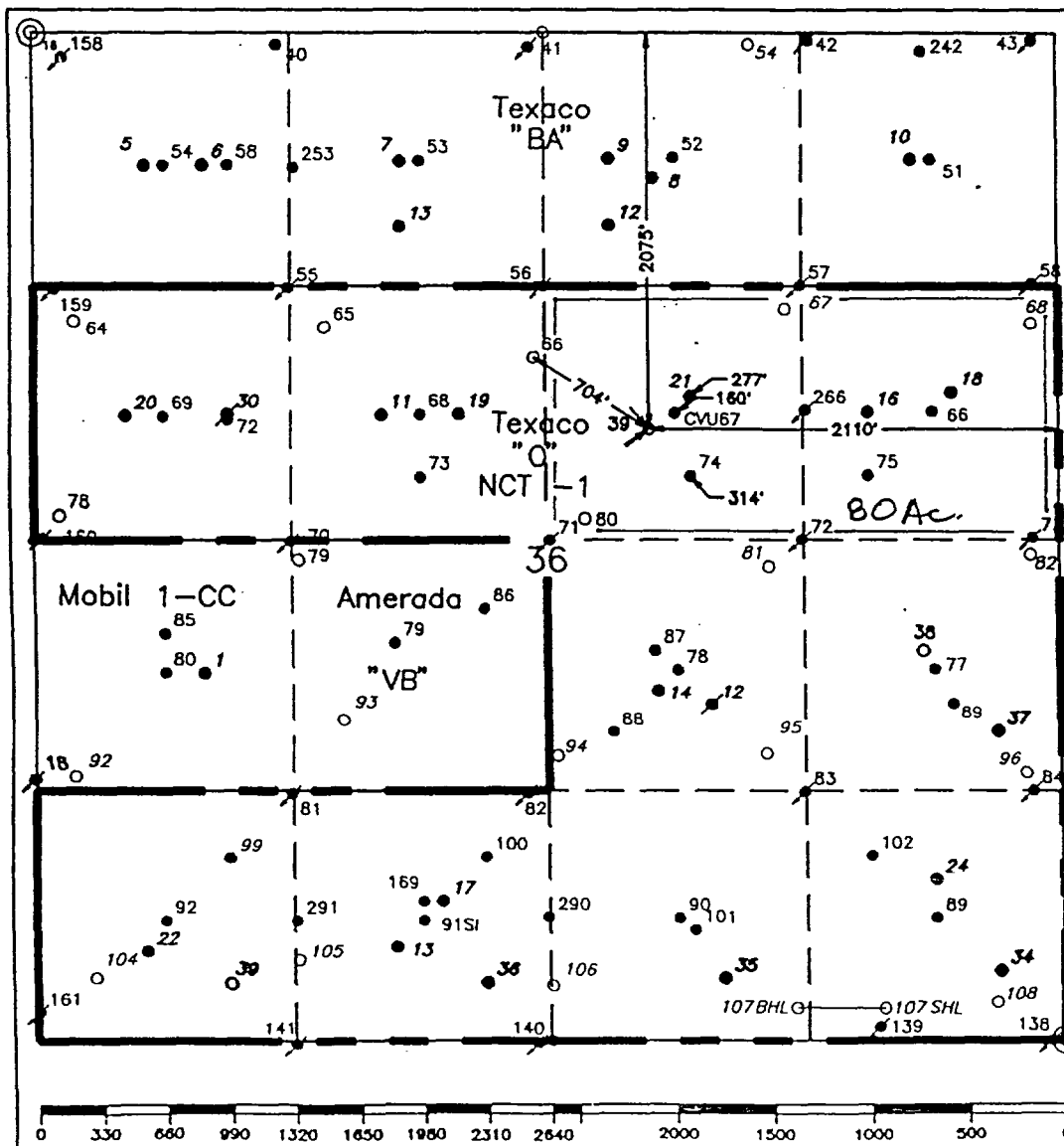
State Lease-4 copies
Fee Lease-3 copies

☐ AMENDED REPORT

WELL LOCATION AND ACREAGE DEDICATION PLAT

1 API Number 30-025-32452		2 Pool Code 62320		3 Pool Name Vacuum, Upper Penn.					
4 Property Code 11048		5 Property Name New Mexico "O" State NCT-1				6 Well Number 39			
7 OGRID No. 22351		8 Operator Name TEXACO EXPLORATION & PRODUCTION, INC.				9 Elevation 3997'			
10 Surface Location									
UL or lot no. G	Section 36	Township 17-S	Range 34-E	Lot Idn	Feet from the 2075'	North/South line North	Feet from the 2110'	East/West line East	County Lea
11 Bottom Hole Location If Different From Surface									
UL or lot no.	Section	Township	Range	Lot Idn	Feet from the	North/South line	Feet from the	East/West line	County
12 Dedicated Acres 80		13 Joint or Infill		14 Consolidation Code		15 Order No.			

NO ALLOWABLE WILL BE ASSIGNED TO THIS COMPLETION UNTIL ALL INTERESTS HAVE BEEN CONSOLIDATED
OR A NON-STANDARD UNIT HAS BEEN APPROVED BY THE DIVISION.



16 OPERATOR CERTIFICATION

I hereby certify that the information contained herein is true and complete to the best of my knowledge and belief.

Signature

Printed Name

C. Wade Howard

Position

Engineer's Assistant

Company

Texaco Expl. & Prod. Inc.

Date

September 4, 1996

17 SURVEYOR CERTIFICATION

I hereby certify that the well location shown on this plat was plotted from field notes of actual surveys made by me or under my supervision, and that the same is true and correct to the best of my knowledge and belief.

Date Surveyed

August 30, 1996

Signature & Seal of
Professional Surveyor

Certificate No.

7254 John S. Piper

Sheet

DISTRICT I
P. O. Box 1980, Hobbs, NM 88240

DISTRICT II
P. O. Drawer DD, Artesia, NM 88210

DISTRICT III
1000 Rio Brazos Rd., Aztec, NM 87410

DISTRICT IV
P. O. Box 2088, Santa Fe, NM 87504-2088

State of New Mexico
Energy, Minerals and Natural Resources Department

OIL CONSERVATION DIVISION

PO Box 2088
Santa Fe, NM 87504-2088

Form C-102
Revised February 10, 1994

Instructions on back

Submit to Appropriate District Office

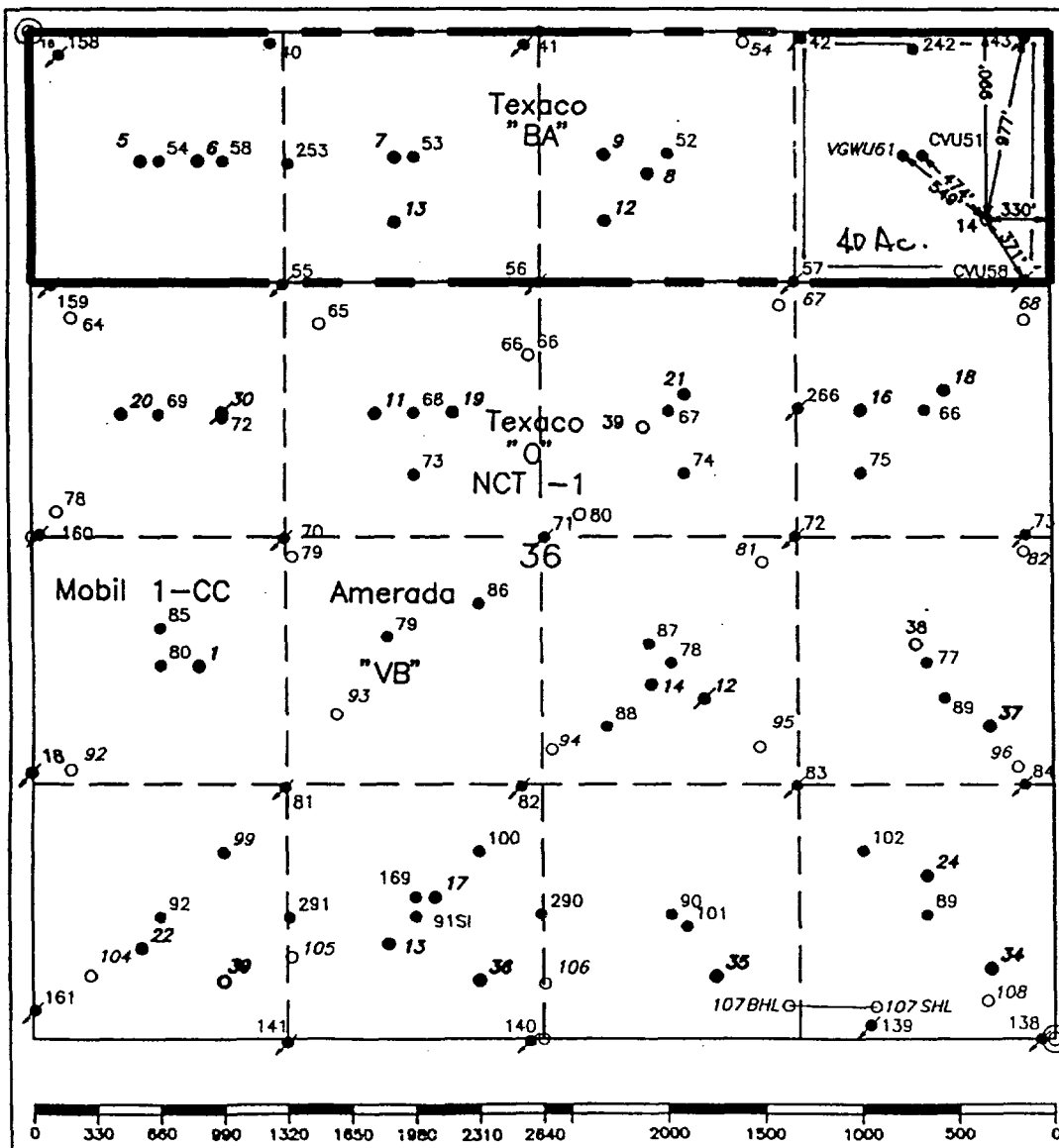
State Lease-4 copies
Fee Lease-3 copies

☐ AMENDED REPORT

WELL LOCATION AND ACREAGE DEDICATION PLAT

1 API Number 30-025-33570		2 Pool Code 96454		3 Pool Name Vacuum, Atoka				
4 Property Code 11096		5 Property Name State "BA"			6 Well Number 14			
7 OGRID No. 22351		8 Operator Name TEXACO EXPLORATION & PRODUCTION, INC.			9 Elevation 3991'			
10 Surface Location								
UL or lot no. A	Section 36	Township 17-S	Range 34-E	Lot Idn 990'	Feet from the North/South line North 330'	East/West line East	County Lea	
11 Bottom Hole Location if Different From Surface								
UL or lot no.	Section	Township	Range	Lot Idn	Feet from the	North/South line	East/West line	County
12 Dedicated Acres 40		13 Joint or Infill		14 Consolidation Code		15 Order No.		

NO ALLOWABLE WILL BE ASSIGNED TO THIS COMPLETION UNTIL ALL INTERESTS HAVE BEEN CONSOLIDATED
OR A NON-STANDARD UNIT HAS BEEN APPROVED BY THE DIVISION.



16 OPERATOR CERTIFICATION

I hereby certify that the information contained herein is true and complete to the best of my knowledge and belief.

Signature

C. Wade Howard

Printed Name

C. Wade Howard

Position

Engineer's Assistant

Company

Texaco Expl. & Prod. Inc.

Date

September 4, 1996

17 SURVEYOR CERTIFICATION

I hereby certify that the well location shown on this plat was plotted from field notes of actual surveys made by me or under my supervision, and that the same is true and correct to the best of my knowledge and belief.

Date Surveyed

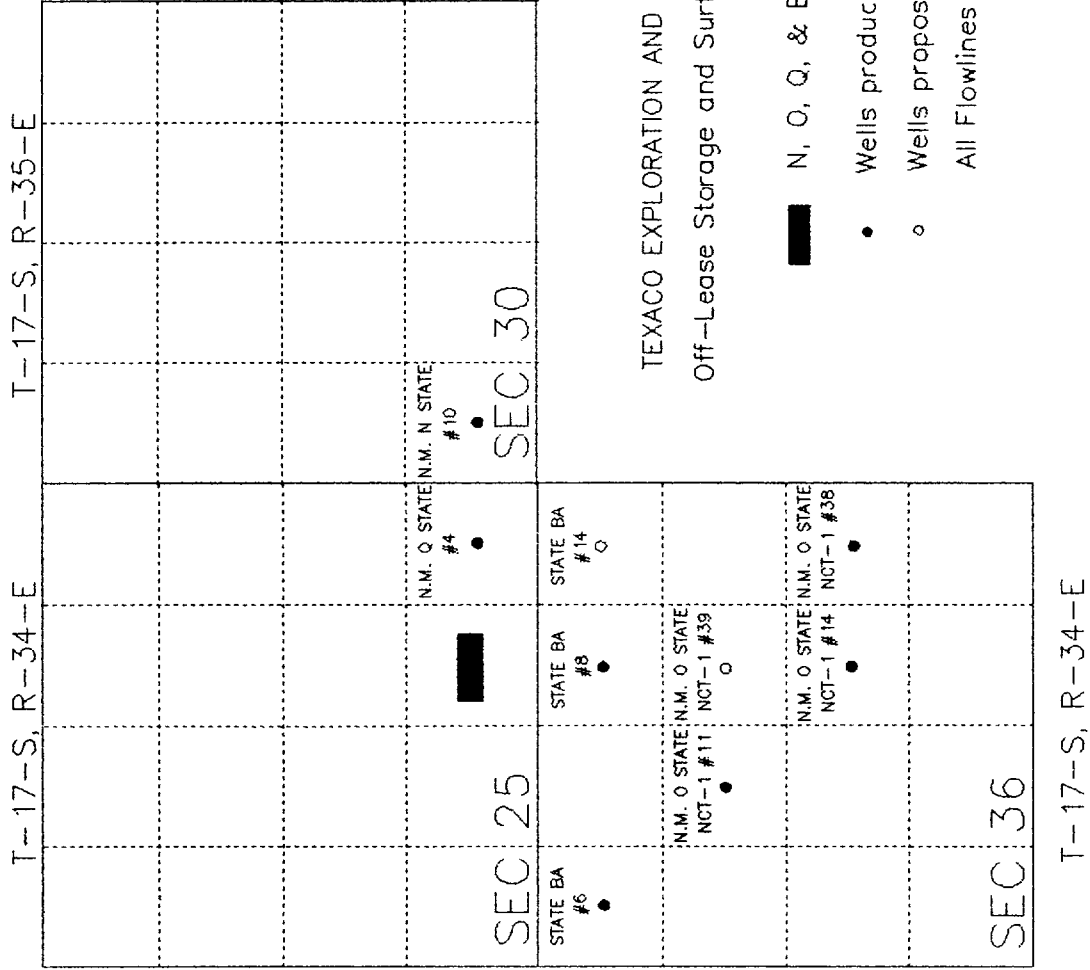
August 30, 1996

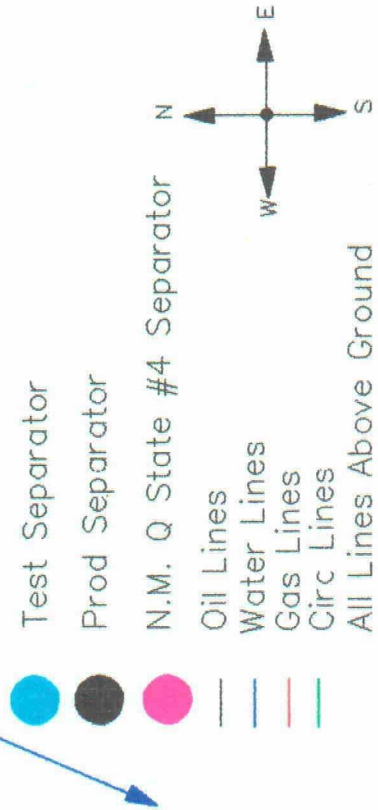
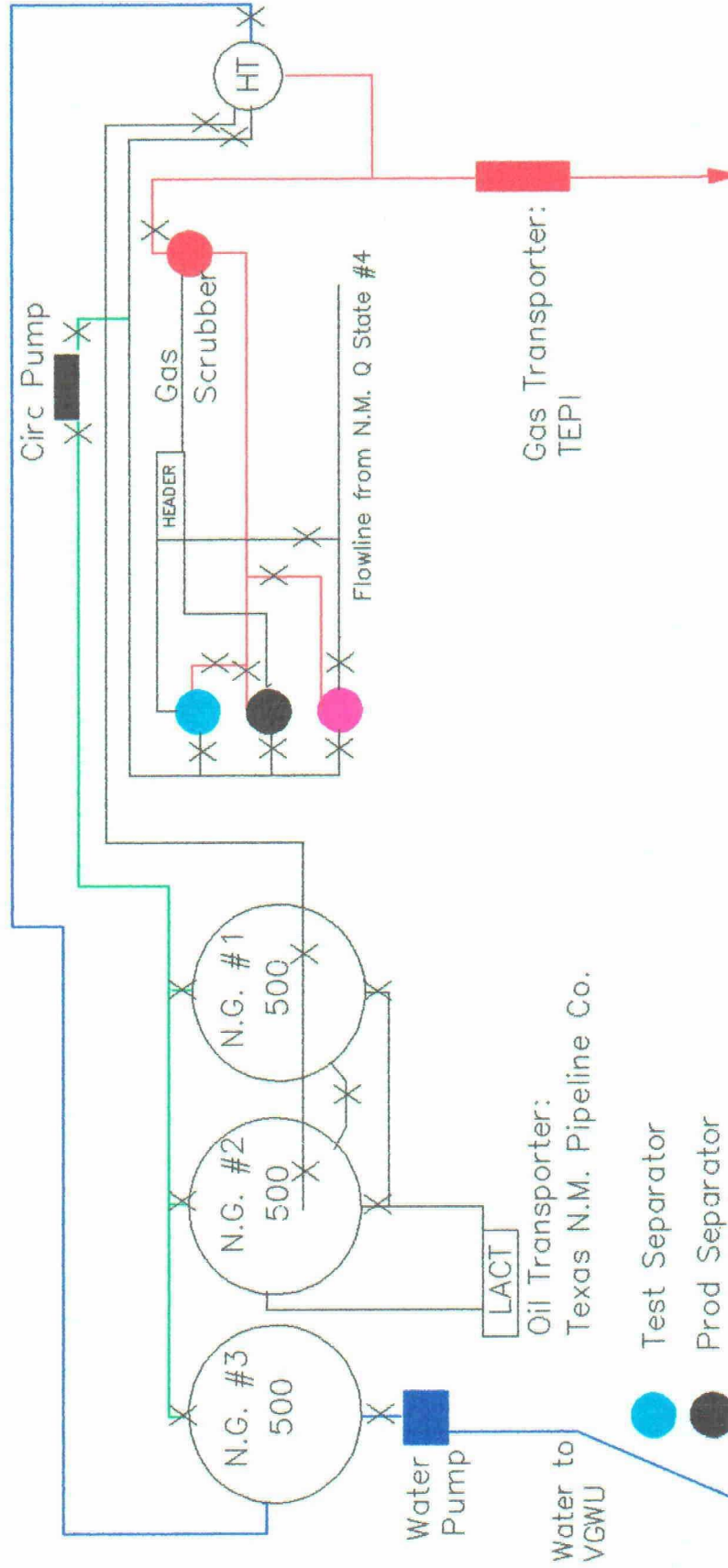
Signature & Seal of
Professional Surveyor

Certificate No.

7254 John S. Piper

Sheet





TEXACO EXPLORATION AND PRODUCTION INC.
 N.M. N, O, Q, & BA BATTERY
 Ltr. O, Sec. 25, T-17-S, R-34-E
 LEA COUNTY, NEW MEXICO